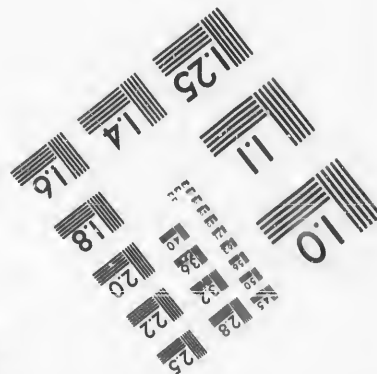
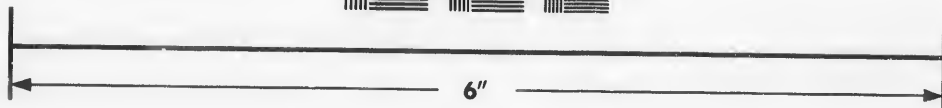
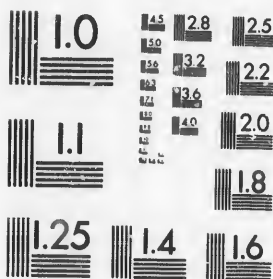


**IMAGE EVALUATION
TEST TARGET (MT-3)**



**Photographic
Sciences
Corporation**

23 WEST MAIN STREET
WEBSTER, N.Y. 14580
(716) 872-4503

**CIHM/ICMH
Microfiche
Series.**

**CIHM/ICMH
Collection de
microfiches.**



Canadian Institute for Historical Microreproductions / Institut canadien de microreproductions historiques

© 1986

Technical and Bibliographic Notes/Notes techniques et bibliographiques

The Institute has attempted to obtain the best original copy available for filming. Features of this copy which may be bibliographically unique, which may alter any of the images in the reproduction, or which may significantly change the usual method of filming, are checked below.

L'Institut a microfilmé le meilleur exemplaire qu'il lui a été possible de se procurer. Les détails de cet exemplaire qui sont peut-être uniques du point de vue bibliographique, qui peuvent modifier une image reproduite, ou qui peuvent exiger une modification dans la méthode normale de filmage sont indiqués ci-dessous.

- | | |
|--|--|
| <input type="checkbox"/> Coloured covers/
Couverture de couleur | <input type="checkbox"/> Coloured pages/
Pages de couleur |
| <input type="checkbox"/> Covers damaged/
Couverture endommagée | <input type="checkbox"/> Pages damaged/
Pages endommagées |
| <input type="checkbox"/> Covers restored and/or laminated/
Couverture restaurée et/ou pelliculée | <input type="checkbox"/> Pages restored and/or laminated/
Pages restaurées et/ou pelliculées |
| <input type="checkbox"/> Cover title missing/
Le titre de couverture manque | <input checked="" type="checkbox"/> Pages discoloured, stained or foxed/
Pages décolorées, tachetées ou piquées |
| <input type="checkbox"/> Coloured maps/
Cartes géographiques en couleur | <input type="checkbox"/> Pages detached/
Pages détachées |
| <input type="checkbox"/> Coloured ink (i.e. other than blue or black)/
Encre de couleur (i.e. autre que bleue ou noire) | <input checked="" type="checkbox"/> Showthrough/
Transparence |
| <input type="checkbox"/> Coloured plates and/or illustrations/
Planches et/ou illustrations en couleur | <input type="checkbox"/> Quality of print varies/
Qualité inégale de l'impression |
| <input type="checkbox"/> Bound with other material/
Relié avec d'autres documents | <input type="checkbox"/> Includes supplementary material/
Comprend du matériel supplémentaire |
| <input type="checkbox"/> Tight binding may cause shadows or distortion
along interior margin/
La reliure serrée peut causer de l'ombre ou de la
distorsion le long de la marge intérieure | <input type="checkbox"/> Only edition available/
Seule édition disponible |
| <input type="checkbox"/> Blank leaves added during restoration may
appear within the text. Whenever possible, these
have been omitted from filming/
Il se peut que certaines pages blanches ajoutées
lors d'une restauration apparaissent dans le texte,
mais, lorsque cela était possible, ces pages n'ont
pas été filmées. | <input type="checkbox"/> Pages wholly or partially obscured by errata
slips, tissues, etc., have been refilmed to
ensure the best possible image/
Les pages totalement ou partiellement
obscurcies par un feuillet d'errata, une pelure,
etc., ont été filmées à nouveau de façon à
obtenir la meilleure image possible. |
| <input type="checkbox"/> Additional comments:
Commentaires supplémentaires: | |

This item is filmed at the reduction ratio checked below/
Ce document est filmé au taux de réduction indiqué ci-dessous.

10X	12X	14X	16X	18X	20X	22X	24X	26X	28X	30X	32X
						✓					

The copy filmed here has been reproduced thanks to the generosity of:

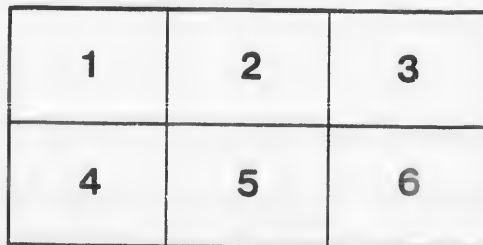
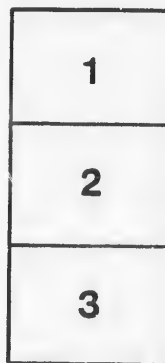
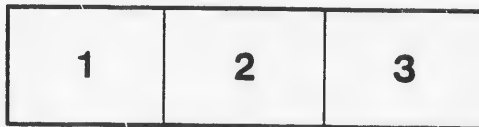
D. B. Weldon Library
University of Western Ontario
(Regional History Room)

The images appearing here are the best quality possible considering the condition and legibility of the original copy and in keeping with the filming contract specifications.

Original copies in printed paper covers are filmed beginning with the front cover and ending on the last page with a printed or illustrated impression, or the back cover when appropriate. All other original copies are filmed beginning on the first page with a printed or illustrated impression, and ending on the last page with a printed or illustrated impression.

The last recorded frame on each microfiche shall contain the symbol \rightarrow (meaning "CONTINUED"), or the symbol ∇ (meaning "END"), whichever applies.

Maps, plates, charts, etc., may be filmed at different reduction ratios. Those too large to be entirely included in one exposure are filmed beginning in the upper left hand corner, left to right and top to bottom, as many frames as required. The following diagrams illustrate the method:



L'exemplaire filmé fut reproduit grâce à la générosité de:

D. B. Weldon Library
University of Western Ontario
(Regional History Room)

Les images suivantes ont été reproduites avec le plus grand soin, compte tenu de la condition et de la netteté de l'exemplaire filmé, et en conformité avec les conditions du contrat de filmage.

Les exemplaires originaux dont la couverture en papier est imprimée sont filmés en commençant par le premier plat et en terminant soit par la dernière page qui comporte une empreinte d'impression ou d'illustration, soit par le second plat, selon le cas. Tous les autres exemplaires originaux sont filmés en commençant par la première page qui comporte une empreinte d'impression ou d'illustration et en terminant par la dernière page qui comporte une telle empreinte.

Un des symboles suivants apparaîtra sur la dernière image de chaque microfiche, selon le cas: le symbole \rightarrow signifie "A SUIVRE", le symbole ∇ signifie "FIN".

Les cartes, planches, tableaux, etc., peuvent être filmés à des taux de réduction différents. Lorsque le document est trop grand pour être reproduit en un seul cliché, il est filmé à partir de l'angle supérieur gauche, de gauche à droite, et de haut en bas, en prenant le nombre d'images nécessaire. Les diagrammes suivants illustrent la méthode.

THE CROWNING
OF MUSIC



GRAND
OPERA HOUSE,
LONDON, ONT.
SEASON
1899-1900.

Devils Island
Dec 25/99

• SMITH BROS., •

TELEPHONE

LEADING PLUMBERS.

265 DUNDAS STREET,

LONDON, ONT.

Advertiser Pub. Dept.

WHERE PEOPLE CONGREGATE, THERE ADVERTISE.

THE
PROGRAMME...

The primary idea of this Programme is, of course, to enlighten the audience as to the personnel of the artists taking part in the performances, incidentally to serve as a guide to the plot of the piece, and generally to give such information as will tend to the enjoyment of the auditor.

But there is a fund of information in the advertisements that may be seriously considered with profit.

The publishers are prepared to attend to all business in the way of general and special advertising.

Respectfully,
BELTON & ROOT,
Advertising Agents.

HARRY MCKENNA,

...DEALER IN...

CHOICE TOBACCONIST'S GOODS,

Always Open after the Opera.

Retail and Wholesale.

225 DUNDAS STREET.

Read and Reflect.

The management reserves the right to refuse admission to anyone.

DOORS open for matinees at 2 p. m. ; curtain rises at 2.30 p. m.

Evenings.—Doors open at 7.30, and curtain rises at 8.15 p. m. sharp.

Tickets can be reserved two days in advance without extra charge.

Office open from 9 a. m. to 5 p. m.

Seats can be secured by mail, telegraph or telephone. Telephone 732.

Seats ordered by Telephone or in Person, and not called for by 7.30 o'clock on the night of performance, will then be sold to avoid loss to the Theatre.

Physicians are requested to register at the Box Office, leaving seat number as this will enable Ushers to find them, if called for, without disturbing the audience.

Children in arms not admitted to evening performances. Children three years old or over, full price.

Patrons will confer a favor by reporting to the management any incivility or inattention on the part of the employees, and annoyances of any nature.

If the individual members of an audience would stop to think for just an instant, they would undoubtedly appreciate the fact that the habit of rising from their seat and leaving the theatre before the curtain falls, is a most annoying one, and one that should be stopped. We therefore beg our audiences to kindly remain in their seats until the close of the performance.

Carriages can be ordered at the Box Office or of the Chief Usher.

For all lost articles, apply at Box Office.

It is strange, but there is a class of people that seem to take an intense delight in bespattering the floor with tobacco juice, and in being boisterous and using profane language. These people should know at once that the courts authorize their immediate expulsion, should the management seem fit to exercise its rights.

Slater Bros

...TAILORS...

Telephone 344.

399 Richmond St., LONDON.

Grand Opera House

LONDON, ONT.

C. J. WHITNEY, Lessee.

SEASON 1899-1900.

A. E. ROOT, Manager.

PROGRAMME.

MATINEE AND NIGHT.
CHRISTMAS DAY, DECEMBER 25th, 1899.

VERA DE NOIE'S PRODUCTION OF

"Devil's Island."

Written by VERA DE NOIE and ARTHUR HALL.
Founded on the Famous Dreyfus Case.

Programme continued on next page.


BELTON
AND
ROOT

Bill Posting, Distrib-
uting and General
Advertising Agents

Control all the Bill Boards and Dead Walls throughout the City. Population of City, 40,000. All orders for Bill Posting, Distributing, Card Tacking, and General Advertising for Western Ontario will receive prompt attention.

OFFICE:—BOX OFFICE OPERA HOUSE

The London Daily News has the largest sworn cir-

SMOKE THE 



VETERAN



10c. Cigar.

MANUFACTURED BY

W. C. ROSS, London.

PROGRAMME.

CAST OF CHARACTERS.

Maurice De La Tour, captain in the French Army	Leander Blauden
Prince Boris Orloff, of the Foreign Legation	Arthur E. Sprague
Gen. Regaud, head of the War Department	William T. Clarke
George Maxwell, special correspondent of the New York Hustler, under the name of "Silver Pen"	Harry Markham
Victor Duvernoy, lieutenant in the French Army	Harry Lester
Oscar Astor, of the Chicago's 400	Frank G. Surles
Prince Chin Loo, the Chinese Ambassador	Ching-Fo Long
Yusseff Bey, the Turkish Ambassador	Xenophon Castriota
Count Yamacochi, the Japanese Ambassador	Takio-Sampia
Tony Pons, secretary of the Prince, and "a would-be-leader of the social revolution"	Lew McCord
Sergeant Grandin	of the } Lewis A. Johnson
Corporal Le Franc	French Army. } Edward Coombs
Pierre	French Students. } Harry Wheeler
Francois	Maurice Delemater
Anatole, servant of the General	Fred Thompson
Lady Dazey	Cora Carmichael
Mme. De Pay	Bessie Surles

Programme continued on next page.

Buy your DIAMONDS and WATCHES, at
WARD'S JEWELRY, 374 Richmond Street.

Charlie, please take me to the Fashion
Restaurant, No. 357 Richmond St., to have
some Oysters after the Show.

ulation in Canada, Toronto and Montreal excepted.

High Grade

Toilet Soaps,

Perfumes and

Toilet Powders.

W. T. STRONG & CO.

Dispensing Chemists

101 PRINCE STREET,

LONDON.

A NEW

IMPORTATION

JUST RECEIVED...

PROGRAMME.

Mrs. Vandewater..... Agnes Slavin
 Babette Folliot, from the country..... Mary Mullens
 Gay Huntress, an American heiress and friend of Pauline..... Elma Gillette
 Elizabeth Atherton Randolph, special correspondent to the New York Whirlwind,
 under the name of Patty Pry Cora Macy
 Pauline De La Tour, wife of Maurice and niece of Gen. Regaud..... Polly Stockwell
 and
 VERA DE NOIE..... as COUNTESS NINA PETROVSKY
 Attendants, Ambassadors, Students, Soldiers, etc.
 Time—The Present.

SYNOPSIS.

ACT I.—Paris, France. House and grounds of Gen. Regaud. Grand military reception The accusation. The arrest.
 ACT II.—Scene 1—Room in the War Department. Waiting for the verdict. The wife's appeal to the Powers. Scene 2—The Place La Concorde, Paris. The public degradation.
 ACT III.—The Countess Nina's apartments, Paris. Plans laid. Now for Devil's Island.

Programme continued on next page.

....Free Admission to this Theatre may be made by buying....

GAS

COKE

Now \$4.00 per Ton.

Will Advance Later On.

Equal in every respect
to Hard Coal

.....FOR.....

Furnaces, Base Burners,
Ranges and Grates.

CITY GAS COMPANY, 401 Clarence Street.

Smoke David Harum Cigar.

A. WOLF,
Tobacconist
Has an assortment of Imported Cigars that is worth considering.
383 Richmond Street.
202½ Dundas Street.

F. N. Harvey, L.D.S.
DENTIST
204 DUNDAS STREET.

WM. STEVELY & SON,

—DEALERS IN—
Cooking and Heating Stoves and Ranges for Coal or Wood, Lamp Goods, Cutlery and General House Furnishings.

362 RICHMOND STREET.

OFFICE RESTAURANT

Opposite the Richmond Street exit of Opera House.

Choice Wines, Liquors and Cigars.
Dining Parlors Upstairs.

—D. SARE.

PROGRAMME.

ACT IV.—Scene 1—Under the sea; the submarine boat. Scene 2—Top of the sea. Devil's Island; the steel cage and its prisoner. The explosion. Scene 3—The open sea. The hustler. The rescue.

ACT V.—As we would have it. As it is. He is innocent.

Play produced under the personal direction of the authoress, Miss Vera De Noie.

EXECUTIVE STAFF FOR "DEVIL'S ISLAND."

Chas. Rosencrans Acting Manager.
George Frances Business Manager.
Frank G. Surles Stage Manager.
James Duffy Mester Carpenter.
Wm. H. Thompson Electrician.
Ella Shapper Wardrobe Mistress.

Programme continued on next page.

"MATCHLESS BELL PIANOS" Take the Lead.

Used exclusively at Grand Opera House.

SANBORN & TREBILCOCK, Sole Agents for London, 183 Dundas Street.

Smoke Uneeda Cigar.

High-toned Instruments for
Cultured People

The MASON & BISCH PIANO

Is the acme of Musical Perfection—The Crowned
King of Stringed Harmony.

LONDON WAREROOMS—213 Dundas Street.

Next Attraction

FIVE NIGHTS AND WEDNESDAY AND SATURDAY MATINEE,
Commencing Tuesday, December 26th.

RETURN OF THE FAVORITES.

THE LYCEUM CO.

IN REPERTOIRE

Tuesday—Hamlet.

Thursday—Merchant of Venice.

Wednesday Matinee—Merchant of Venice. Friday—Othello.

Wednesday—David Garrick.

Saturday—Romeo and Juliet.

Saturday Matinee—David Garrick.

POPULAR PRICES:

Matinee—15 & 25c.

Night—15, 25, 35 & 50c.

SEATS NOW ON SALE.

For Latest Styles.....
Nobby, Well Made Clothes,

— DO TO —

FAIRBAIRN

...The Tailor

Opposite City Hall, Richmond St.

Buy Your Xmas....

Wines and Liquors

.....AT.....

WATT & WOODWARD'S

Seventeen different brands of Scotch
Whiskey, and a full assortment of all
the leading brands of Wines, Brandies,
Claret, etc., in stock.

428 RICHMOND STREET.

Trading Stamps.

Phone 418.

Palace Dancing Academy

Thoroughly Organized and Strictly Up-to-Date.

COMPETENT TEACHERS.
LIBERAL TERMS.

DAYTON & McCORMICK

T. CONNOR

Wholesale and Retail
Butcher.

Stalls, 6 & 7 Covent Garden Market.

The Original Swiss Electro-Chemical Ring

None genuine without Trade-Mark in each ring. The first introduced in America. All other are imitations.

Rheumatism

in all its various forms, Neuralgia, Gout, Lumbago, Diabetes, Bright's Disease, Asthma are all caused by **Uric Acid in the Blood**. The Metals of which this ring is composed, in connection with the acid create an **Electro-Chemical** action, removing the acid and curing the disease.

413 Commerce St. San Francisco, Cal. Sent every day

The Swiss-American Ring Co.
I suffered with Rheumatism 15 years and Diabetes for the past 3 years with indications of Bright's Disease. Copious large stones, causing a cure but all in vain, until the New York Journal recommended your Swiss Electro-Chemical Ring so highly that I sent for one. Have been wearing the ring four months and since the first week after I put it on, have not had a trace of Rheumatism and not a sign of Diabetes trouble. I could not get another ring for \$1000.00 if I could not get another very truly yours, *G. W. Hall*

Price \$2 SILVER COVERED \$3 GOLD COVERED \$4

Sent by mail or C.O.D. Express for size, cut hole in card that fits finger or Jeweler's measure & money refunded if not satisfactory after wearing 30 days.

The Swiss-American Ring Co.
Express Building, Windsor, Ont., Canada. 4 ONE HANCOCK, DETROIT, MICH. U.S.A.

Advertising is the foundation of all successful enterprises. If your advertisement was here it would be read by every visitor to this theatre.

The MONROE IMPROVED GOLD CURE

Established 1892.



NO BAD
AFTER
EFFECTS.

Safe and Reliable
Treatment for
the Cure of



Alcohol,
Morphine,
Cocaine and
Tobacco Habits



Send for
Pamphlet.

H. J. MCKAY, Prop.,

WINDSOR, ONT.

P. O. BOX 446—Tel. 175.

46-48 Pitt St. W.

