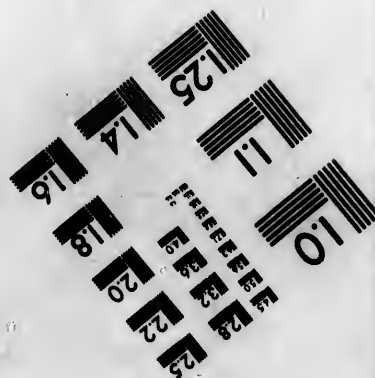
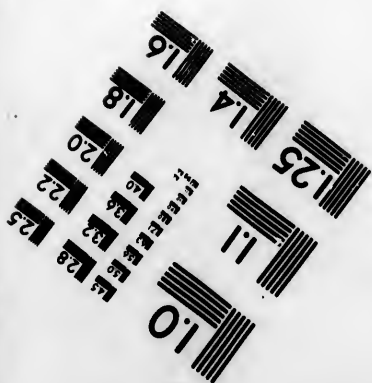
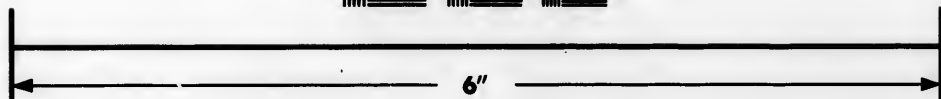
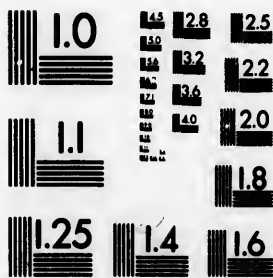


**IMAGE EVALUATION
TEST TARGET (MT-3)**



**Photographic
Sciences
Corporation**

23 WEST MAIN STREET
WEBSTER, N.Y. 14580
(716) 872-4503

**CIHM/ICMH
Microfiche
Series.**

**CIHM/ICMH
Collection de
microfiches.**



Canadian Institute for Historical Microreproductions / Institut canadien de microreproductions historiques

© 1983

Technical and Bibliographic Notes/Notes techniques et bibliographiques

The Institute has attempted to obtain the best original copy available for filming. Features of this copy which may be bibliographically unique, which may alter any of the images in the reproduction, or which may significantly change the usual method of filming, are checked below.

L'Institut a microfilmé le meilleur exemplaire qu'il lui a été possible de se procurer. Les détails de cet exemplaire qui sont peut-être uniques du point de vue bibliographique, qui peuvent modifier une image reproduite, ou qui peuvent exiger une modification dans la méthode normale de filmage sont indiqués ci-dessous.

- Coloured covers/
Couverture de couleur
- Covers damaged/
Couverture endommagée
- Covers restored and/or laminated/
Couverture restaurée et/ou pelliculée
- Cover title missing/
Le titre de couverture manque
- Coloured maps/
Cartes géographiques en couleur
- Coloured ink (i.e. other than blue or black)/
Encre de couleur (i.e. autre-que bleue ou noire)
- Coloured plates and/or illustrations/
Planches et/ou illustrations en couleur
- Bound with other material/
Relié avec d'autres documents
- Tight binding may cause shadows or distortion along interior margin/
La reliure serrée peut causer de l'ombre ou de la distortion le long de la marge intérieure
- Blank leaves added during restoration may appear within the text. Whenever possible, these have been omitted from filming/
Il se peut que certaines pages blanches ajoutées lors d'une restauration apparaissent dans le texte, mais, lorsque cela était possible, ces pages n'ont pas été filmées.
- Additional comments:/
Commentaires supplémentaires:

- Coloured pages/
Pages de couleur
- Pages damaged/
Pages endommagées
- Pages restored and/or laminated/
Pages restaurées et/ou pelliculées
- Pages discoloured, stained or foxed/
Pages décolorées, tachetées ou piquées
- Pages detached/
Pages détachées
- Showthrough/
Transparence
- Quality of print varies/
Qualité inégale de l'impression
- Includes supplementary material/
Comprend du matériel supplémentaire
- Only edition available/
Seule édition disponible
- Pages wholly or partially obscured by errata slips, tissues, etc., have been refilmed to ensure the best possible image/
Les pages totalement ou partiellement obscurcies par un feuillet d'errata, une pelure, etc., ont été filmées à nouveau de façon à obtenir la meilleure image possible.

This item is filmed at the reduction ratio checked below/
Ce document est filmé au taux de réduction indiqué ci-dessous.

10X	14X	18X	22X	26X	30X
<input type="checkbox"/>	<input type="checkbox"/>	<input type="checkbox"/>	<input checked="" type="checkbox"/>	<input type="checkbox"/>	<input type="checkbox"/>
12X	16X	20X	24X	28X	32X

The copy filmed here has been reproduced thanks to the generosity of:

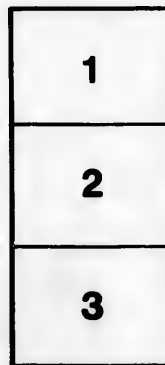
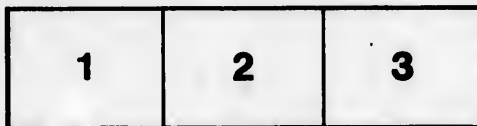
Library of the Public
Archives of Canada

The images appearing here are the best quality possible considering the condition and legibility of the original copy and in keeping with the filming contract specifications.

Original copies in printed paper covers are filmed beginning with the front cover and ending on the last page with a printed or illustrated impression, or the back cover when appropriate. All other original copies are filmed beginning on the first page with a printed or illustrated impression, and ending on the last page with a printed or illustrated impression.

The last recorded frame on each microfiche shall contain the symbol \rightarrow (meaning "CONTINUED"), or the symbol ∇ (meaning "END"), whichever applies.

Maps, plates, charts, etc., may be filmed at different reduction ratios. Those too large to be entirely included in one exposure are filmed beginning in the upper left hand corner, left to right and top to bottom, as many frames as required. The following diagrams illustrate the method:



L'exemplaire filmé fut reproduit grâce à la générosité de:

La bibliothèque des Archives
publiques du Canada

Les images suivantes ont été reproduites avec le plus grand soin, compte tenu de la condition et de la netteté de l'exemplaire filmé, et en conformité avec les conditions du contrat de filmage.

Les exemplaires originaux dont la couverture en papier est imprimée sont filmés en commençant par le premier plat et en terminant soit par la dernière page qui comporte une empreinte d'impression ou d'illustration, soit par le second plat, selon le cas. Tous les autres exemplaires originaux sont filmés en commençant par la première page qui comporte une empreinte d'impression ou d'illustration et en terminant par la dernière page qui comporte une telle empreinte.

Un des symboles suivants apparaîtra sur la dernière image de chaque microfiche, selon le cas: le symbole \rightarrow signifie "A SUIVRE", le symbole ∇ signifie "FIN".

Les cartes, planches, tableaux, etc., peuvent être filmés à des taux de réduction différents. Lorsque le document est trop grand pour être reproduit en un seul cliché, il est filmé à partir de l'angle supérieur gauche, de gauche à droite, et de haut en bas, en prenant le nombre d'images nécessaire. Les diagrammes suivants illustrent la méthode.

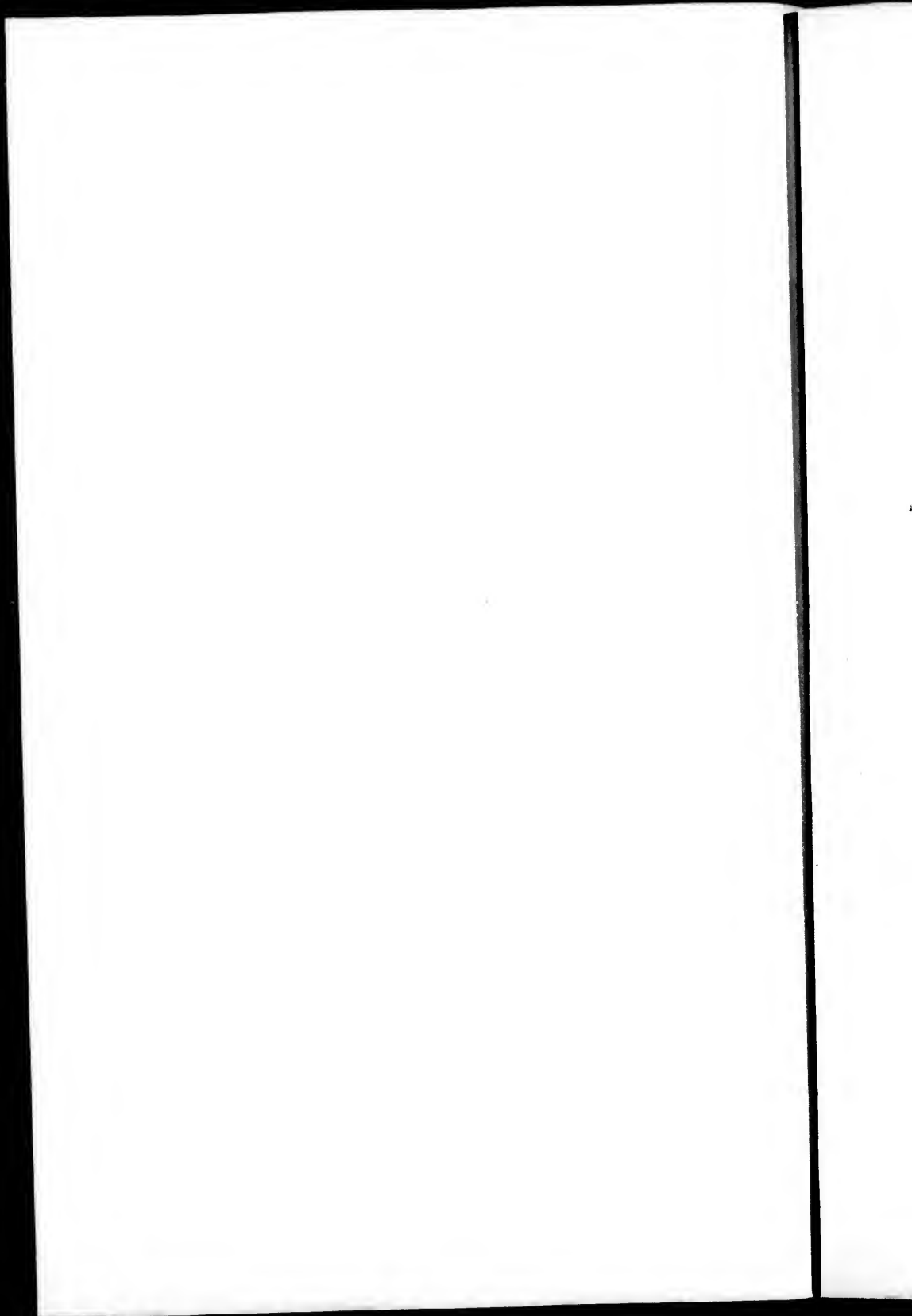
ails
du
odifier
une
mage

errata
to

pelure,
on à



32X





GENERAL SUBSCRIPTION,

FOR THE RELIEF OF

SUFFERERS

BY THE LATE DESTRUCTIVE FIRES THROUGH-
OUT THE PROVINCE OF

NEW-BRUNSWICK.

“Whoso hath this world's good, and seeth his Brother have
need, and shutteth up his bowels of compassion from him,
how dwelleth the love of God in him?” — 1 John 111, 17'

For the Parish of

} *Committee.*

FREDERICTON :

Printed by GEO. K. LUGRIN, King's Printer.

1825.

102850

W

appoi

ants o

Gove

quire

would

oursel

of cal

ing st

to call

ing m

elsewh

cond s

was m

of wh

his pri

such su

tributed

the Pr

your c

cessity

We

Frederickton, 25th October, 1825.

GENTLEMEN,

WE who now take the Liberty of addressing you, having been appointed a Committee, at a General Meeting of the Inhabitants of Frederickton, convened by His Excellency the Lieutenant-Governor, on the day after the destructive fire in this Town, to inquire into and relieve, as far as a liberal subscription then raised, would enable us, the most urgent wants of the sufferers; have exerted ourselves to the utmost in the charitable undertaking. But accounts of calamities, of the like nature in other parts of the Province, having since come to our knowledge, His Excellency has been induced to call a second meeting for the benign and laudable purpose of devising means for rendering the same assistance, which numbers may elsewhere now unfortunately require; in furtherance whereof, a second subscription for a **GENERAL FUND**, was proposed which was most liberally supported, and is still increasing. At the head of which His Excellency, in addition to several other sums from his private purse, placed Fifty Pounds, and which, (together with such sums as charity from other quarters may furnish) will be distributed to the best advantage and relief of all sufferers throughout the Province; and our object in now addressing you is to solicit your co-operation with us, in this work of duty and urgent necessity.

We have therefore ventured to nominate you a Committee for

the Parish of _____ assured that you will use every endeavour in your several districts to obtain such charitable aid as can be afforded, in money wherever it can be obtained, but where more convenient, in lumber, grain, or produce of any kind, and to excite the *immediate active zeal* of every one, in an undertaking so good and laudable, we are confident we need only remind them, that hundreds, (we may say thousands) of our fellow creatures are in misery and distress.

And also we would further venture to recommend, that when the Committees have collected all in their power, they communicate with the Central Committee, safely depositing the donations they may have received, until arrangements for the distribution of them can be made.

We have the Honor to remain,

Gentlemen,

Your most obedient Servants,

George Shore,

Thomas Baillie,

George Best,

James Somerville,

William J. Bedell,

William Taylor,

Henry G. Clopper,

Edward W. Miller.

} Committee.

you will use
such charitable
obtained, but
of any kind,
an undertak-
only remind
low creatures

that when the
communicate
donations they
of them can

Servants,

Committee.

