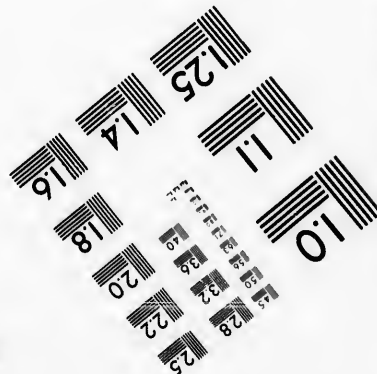
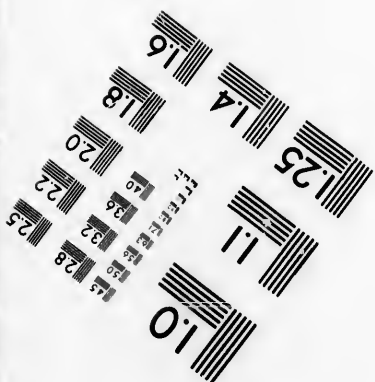
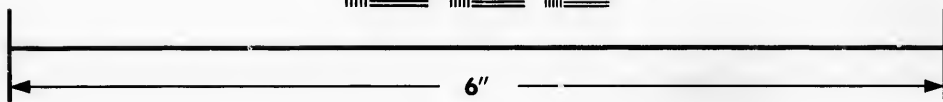
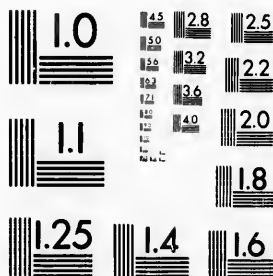


**IMAGE EVALUATION
TEST TARGET (MT-3)**



**Photographic
Sciences
Corporation**

23 WEST MAIN STREET
WEBSTER, N.Y. 14580
(716) 872-4503

**CIHM
Microfiche
Series
(Monographs)**

**ICMH
Collection de
microfiches
(monographies)**



Canadian Institute for Historical Microreproductions / Institut canadien de microreproductions historiques

© 1992

Technical and Bibliographic Notes / Notes techniques et bibliographiques

The Institute has attempted to obtain the best original copy available for filming. Features of this copy which may be bibliographically unique, which may alter any of the images in the reproduction, or which may significantly change the usual method of filming, are checked below.

L'Institut a microfilmé le meilleur exemplaire qu'il lui a été possible de se procurer. Les détails de cet exemplaire qui sont peut-être uniques du point de vue bibliographique, qui peuvent modifier une image reproduite, ou qui peuvent exiger une modification dans la méthode normale de filmage sont indiqués ci-dessous.

Coloured covers/
Couverture de couleur

Covers damaged/
Couverture endommagée

Covers restored and/or laminated/
Couverture restaurée et/ou pelliculée

Cover title missing/
Le titre de couverture manque

Coloured maps/
Cartes géographiques en couleur

Coloured ink (i.e. other than blue or black)/
Encre de couleur (i.e. autre que bleue ou noire)

Coloured plates and/or illustrations/
Planches et/ou illustrations en couleur

Bound with other material/
Relié avec d'autres documents

Tight binding may cause shadows or distortion
along interior margin/
La reliure serrée peut causer de l'ombre ou de la
distorsion le long de la marge intérieure

Blank leaves added during restoration may appear
within the text. Whenever possible, these have
been omitted from filming/
Il se peut que certaines pages blanches ajoutées
lors d'une restauration apparaissent dans le texte,
mais, lorsque cela était possible, ces pages n'ont
pas été filmées.

Coloured pages/
Pages de couleur

Pages damaged/
Pages endommagées

Pages restored and/or laminated/
Pages restaurées et/ou pelliculées

Pages discoloured, stained or foxed/
Pages décolorées, tachetées ou piquées

Pages detached/
Pages détachées

Showthrough/
Transparence

Quality of print varies/
Qualité inégale de l'impression

Continuous pagination/
Pagination continue

Includes index(es)/
Comprend un (des) index

Title on header taken from: /
Le titre de l'en-tête provient:

Title page of issue/
Page de titre de la livraison

Caption of issue/
Titre de départ de la livraison

Masthead/
Générique (périodiques) de la livraison

Additional comments: /
Commentaires supplémentaires:

There are some creases in the middle of the pages.

This item is filmed at the reduction ratio checked below /
Ce document est filmé au taux de réduction indiqué ci-dessous.

10X	14X	18X	22X	26X	30X
<input type="checkbox"/>	<input type="checkbox"/>	<input type="checkbox"/>	<input checked="" type="checkbox"/>	<input type="checkbox"/>	<input type="checkbox"/>
12X	16X	20X	24X	28X	32X

The copy filmed here has been reproduced thanks to the generosity of:

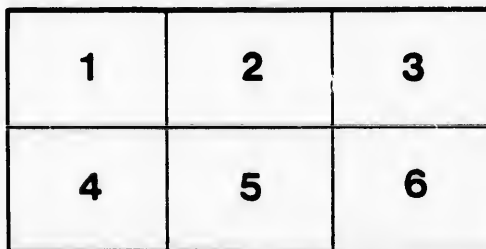
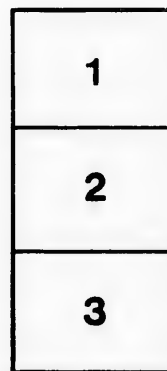
Manuscript Division,
National Archives of Canada

The images appearing here are the best quality possible considering the condition and legibility of the original copy and in keeping with the filming contract specifications.

Original copies in printed paper covers are filmed beginning with the front cover and ending on the last page with a printed or illustrated impression, or the back cover when appropriate. All other original copies are filmed beginning on the first page with a printed or illustrated impression, and ending on the last page with a printed or illustrated impression.

The last recorded frame on each microfiche shall contain the symbol \rightarrow (meaning "CONTINUED"), or the symbol ∇ (meaning "END"), whichever applies.

Maps, plates, charts, etc., may be filmed at different reduction ratios. Those too large to be entirely included in one exposure are filmed beginning in the upper left hand corner, left to right and top to bottom, as many frames as required. The following diagrams illustrate the method:



L'exemplaire filmé fut reproduit grâce à la générosité de:

Division des manuscrits,
Archives nationales du Canada

Les images suivantes ont été reproduites avec le plus grand soin, compte tenu de la condition et de la netteté de l'exemplaire filmé, et en conformité avec les conditions du contrat de filmage.

Les exemplaires originaux dont la couverture en papier est imprimée sont filmés en commençant par le premier plat et en terminant soit par la dernière page qui comporte une empreinte d'impression ou d'illustration, soit par le second plat, selon le cas. Tous les autres exemplaires originaux sont filmés en commençant par la première page qui comporte une empreinte d'impression ou d'illustration et en terminant par la dernière page qui comporte une telle empreinte.

Un des symboles suivants apparaîtra sur la dernière image de chaque microfiche, selon le cas: le symbole \rightarrow signifie "A SUIVRE", le symbole ∇ signifie "FIN".

Les cartes, planches, tableaux, etc., peuvent être filmés à des taux de réduction différents. Lorsque le document est trop grand pour être reproduit en un seul cliché, il est filmé à partir de l'angle supérieur gauche, de gauche à droite, et de haut en bas, en prenant le nombre d'images nécessaire. Les diagrammes suivants illustrent la méthode.

CIRCULAR INSTRUCTIONS TO COLLECTORS AND OTHER OFFICERS OF THE CUSTOMS.

TREASURY DEPARTMENT,

JUNE 12th, 1851.

In pursuance of authority vested in this Department, with the approbation of the President of the United States, by the act of Congress approved the 26th September, 1850, a copy of which is hereto annexed, entitled "An act to authorize the Secretary of the Treasury to permit vessels from the British North American provinces to lade and unlade at such places in any collection district of the United States as he may designate;" the following regulations and instructions are issued for the information and government of the proper officers of the Customs, and others interested.

In consideration of satisfactory assurances communicated by the British Minister in this city, that privileges of the kind contemplated by the before mentioned act of Congress are extended to vessels of the United States in ports or places within the British North American provinces of "Canada, New Brunswick, and Nova Scotia," it becomes proper to state, that British vessels laden in the ports, and with the products of Canada, New Brunswick, or Nova Scotia, [with the qualification in regard to the latter hereinafter stated,] or either of them, will hereafter, or so long as similar privileges may be extended to vessels of the U. States in said British provinces, be permitted to lade or unlade their cargoes at any port or place at which vessels of the United States can lawfully lade or unlade, upon the same terms and conditions as to duties and customs charges.

The following regulations predicated upon the provisions of existing laws, and equally applicable to vessels of the United States, are prescribed, and a strict compliance therewith enjoined:

1st. Any British vessel laden with the products of the provinces aforesaid, or either of them, being provided with a duly authenticated manifest of the articles composing her cargo, arriving in the United States from *sea*, on due entry and payment of the impost duties at a port of entry, will be permitted to unlade the whole or any part of the cargo at such port of entry, or may proceed, on proper permit granted by the Collector, to one or more ports of delivery within any collection district on the seaboard, and unlade thereat. Any such vessel will also be permitted to lade or take in cargo at any port of entry or port of delivery on the seaboard, to be carried out of the United States. Before clearance can be granted to any such vessel, the owners, shippers, or consignees of the cargo, must deliver to the Collector of the district properly authenticated manifests of the cargo or the parts thereof shipped by them respectively, in conformity with the terms of the 11th section of the act of 10th February, 1820.

2nd. Any such vessel, being provided with proper manifests, entering either of the collection districts of the United States situated on the lake frontiers, will be permitted to enter their cargoes at any port or place where a Collector or Deputy Collector of the Customs may reside; and, on due payment of the duties, may unlade cargo at any port or place where United States vessels can lawfully unlade. Such vessels can likewise lade or take in cargo at similar ports or places, to be conveyed to the provinces aforesaid. In making up cargo, the vessels may proceed from one or more ports or places to another, but a proper manifest of the cargo must be prepared and delivered to the officer of the Customs at the last port or place in the U. States from whence clearance may be taken for a port in the adjoining British provinces.

