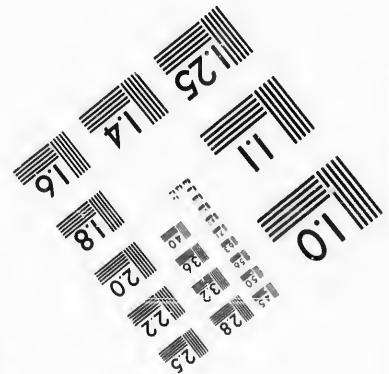
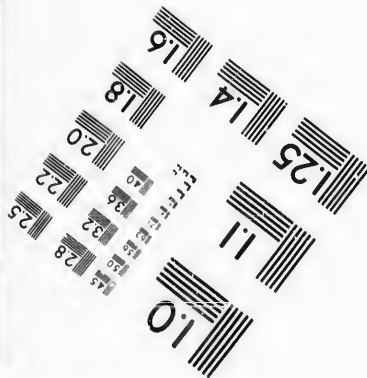
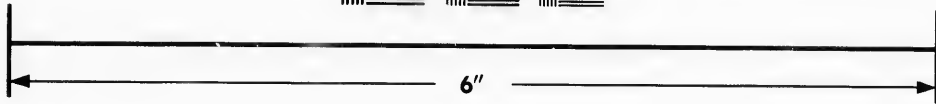
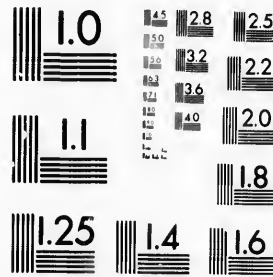


**IMAGE EVALUATION
TEST TARGET (MT-3)**



**Photographic
Sciences
Corporation**

23 WEST MAIN STREET
WEBSTER, N. Y. 14580
(716) 872-4503

**CIHM/ICMH
Microfiche
Series.**

**CIHM/ICMH
Collection de
microfiches.**



Canadian Institute for Historical Microreproductions / Institut canadien d' microreproductions historiques

© 1987

Technical and Bibliographic Notes/Notes techniques et bibliographiques

The Institute has attempted to obtain the best original copy available for filming. Features of this copy which may be bibliographically unique, which may alter any of the images in the reproduction, or which may significantly change the usual method of filming, are checked below.

L'Institut a microfilmé le meilleur exemplaire qu'il lui a été possible de se procurer. Les détails de cet exemplaire qui sont peut-être uniques du point de vue bibliographique, qui peuvent modifier une image reproduite, ou qui peuvent exiger une modification dans la méthode normale de filmage sont indiqués ci-dessous.

- Coloured covers/
Couverture de couleur
- Covers damaged/
Couverture endommagée
- Covers restored and/or laminated/
Couverture restaurée et/ou pelliculée
- Cover title missing/
Le titre de couverture manque
- Coloured maps/
Cartes géographiques en couleur
- Coloured ink (i.e. other than blue or black)/
Encre de couleur (i.e. autre que bleue ou noire)
- Coloured plates and/or illustrations/
Planches et/ou illustrations en couleur
- Bound with other material/
Relié avec d'autres documents
- Tight binding may cause shadows or distortion
along interior margin/
La reliure serrée peut causer de l'ombre ou de la
distorsion le long de la marge intérieure
- Blank leaves added during restoration may
appear within the text. Whenever possible, these
have been omitted from filming/
Il se peut que certaines pages blanches ajoutées
lors d'une restauration apparaissent dans le texte,
mais, lorsque cela était possible, ces pages n'ont
pas été filmées.
- Additional comments:/
Commentaires supplémentaires:

- Coloured pages/
Pages de couleur
- Pages damaged/
Pages endommagées
- Pages restored and/or laminated/
Pages restaurées et/ou pelliculées
- Pages discoloured, stained or foxed/
Pages décolorées, tachetées ou piquées
- Pages detached/
Pages détachées
- Showthrough/
Transparence
- Quality of print varies/
Qualité inégale de l'impression
- Includes supplementary material/
Comprend du matériel supplémentaire
- Only edition available/
Seule édition disponible
- Pages wholly or partially obscured by errata
slips, tissues, etc., have been refilmed to
ensure the best possible image/
Les pages totalement ou partiellement
obscurcies par un feuillet d'errata, une pelure,
etc., ont été filmées à nouveau de façon à
obtenir la meilleure image possible.

This item is filmed at the reduction ratio checked below/
Ce document est filmé au taux de réduction indiqué ci-dessous.

10X	14X	18X	22X	26X	30X
<input type="checkbox"/>	<input type="checkbox"/>	<input type="checkbox"/>	<input checked="" type="checkbox"/>	<input type="checkbox"/>	<input type="checkbox"/>
12X	16X	20X	24X	28X	32X

The copy filmed here has been reproduced thanks to the generosity of:

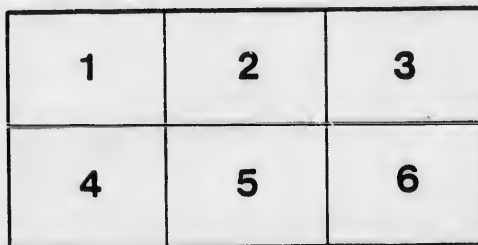
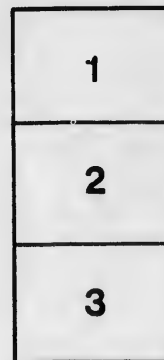
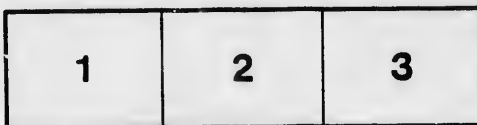
D. B. Weldon Library
University of Western Ontario
(Regional History Room)

The images appearing here are the best quality possible considering the condition and legibility of the original copy and in keeping with the filming contract specifications.

Original copies in printed paper covers are filmed beginning with the front cover and ending on the last page with a printed or illustrated impression, or the back cover when appropriate. All other original copies are filmed beginning on the first page with a printed or illustrated impression, and ending on the last page with a printed or illustrated impression.

The last recorded frame on each microfiche shall contain the symbol \rightarrow (meaning "CONTINUED"), or the symbol ∇ (meaning "END"), whichever applies.

Maps, plates, charts, etc., may be filmed at different reduction ratios. Those too large to be entirely included in one exposure are filmed beginning in the upper left hand corner, left to right end top to bottom, as many frames as required. The following diagrams illustrate the method:



L'exemplaire filmé fut reproduit grâce à la générosité de:

D. B. Weldon Library
University of Western Ontario
(Regional History Room)

Les images suivantes ont été reproduites avec le plus grand soin, compte tenu de la condition et de la netteté de l'exemplaire filmé, et en conformité avec les conditions du contrat de filmage.

Les exemplaires originaux dont la couverture en papier est imprimée sont filmés en commençant par le premier plat et en terminant soit par la dernière page qui comporte une empreinte d'impression ou d'illustration, soit par le second plat, selon le cas. Tous les autres exemplaires originaux sont filmés en commençant par la première page qui comporte une empreinte d'impression ou d'illustration et en terminant par la dernière page qui comporte une telle empreinte.

Un des symboles suivants apparaîtra sur la dernière image de chaque microfiche, selon le cas: le symbole \rightarrow signifie "A SUIVRE", le symbole ∇ signifie "FIN".

Les cartes, planches, tableaux, etc., peuvent être filmés à des taux de réduction différents. Lorsque le document est trop grand pour être reproduit en un seul cliché, il est filmé à partir de l'angle supérieur gauche, de gauche à droite, et de haut en bas, en prenant le nombre d'images nécessaire. Les diagrammes suivants illustrent la méthode.

ails
du
difier
une
page

rata
o

elure,
à

32X

LIST OF VOTERS

Clear Page

FOR THE

W

Township of Caradoc

FOR THE

YEAR 1890.

STRATHROY :

Printed at THE AGE Steam Publishing House, Front Street East.

1890.

T

LIST OF VOTERS

FOR THE

Township of Caradoc

FOR THE

YEAR 1890.

STRATHROY :

Printed at THE AGE Steam Publishing House, Front Street East.
1890.

SCHEDULE OF POST OFFICES.

- | | |
|-------------------|-----------------|
| 1. MOUNT BRYDGES. | 17. APPIN. |
| 2. STRATHROY. | 18. BYRON. |
| 3. DELAWARE. | 19. TORONTO. |
| 4. MUNCEY. | 20. SARNIA. |
| 5. MELBOURNE. | 21. CORINTH. |
| 6. CHRISTINA. | 22. IVAN. |
| 7. GLEN OAK. | 23. TEMPO. |
| 8. CAIRNGORM. | 24. LAMBETH. |
| 9. AMIENS. | 25. ST. THOMAS. |
| 10. KOMOKA. | 26. MIDDLEMISS. |
| 11. POPLAR HILL. | 27. GLENCOE. |
| 12. LONGWOOD. | 28. RIDGETOWN. |
| 13. OSMAN. | 29. DELHI. |
| 14. LONDON. | 30. TILSONBURG. |
| 15. ARKONA. | 31. CASS CITY. |
| 16. TALBOTVILLE. | 32. HENDRICK. |

VOTERS' LIST FOR 1890, Municipality of Caradoc.

Polling Sub-Division No. 1,

Comprising all that portion of the Township lying East of the Side Road between
Lots 12 and 13, and South of the 1st Con.

PART 1. Persons Entitled to Vote at BOTH Municipal Elections and Elections to the Legislative Assembly.

Roll No.	NAME.	LOT.	Concession or Street.	Other Description.	P.O.
J 19	Adams, Wm H.	W pt N hf 18	R 1 N	M F and T	1
J 20	Allan Robert	pt N hf S hf 21 & O pre.	R 1 N	M F and O	3
	23 Adams, James	pt S W eor 18	R 1 N	M F and O	3
J 21	Anderson, Harry	N hf 19	R 1 S	M F and O	3
J 22	Anderson, John D.	N hf 18	R 1 S	M F and O	3
	1231 Anderson, Chas.	N hf 19	R 1 N	M F and O	3
J 116	Bateman, George	N pt 4, pt S hf 12	E M R, R 1 S	M F and O	4
J 120	Brodie, Dunean C.	pt 6, pt S hf 18	E M R, R 3 S	M F and O	4
J 121	Brodie, Hugh	pt 6, pt S hf 18	E M R, R 3 S	M F and O	4
J 122	Brodie, John	pt 6, pt S hf 18	E M R, R 3 S	M F and O	4
	136 Bateman, John T.	N hf N hf 17	R 3 S	M F and O	3
J 129	Bateman, Charles	N pt 18	R 2 S	M F and O	3
J 109	Bartlett, Wm	W hf S hf 17	R 1 S	M F and O	3
J 117	Broom, Sannel	E hf 4	W M R	M F and O	3
J 118	Burwell, Mahlon	N pt 17, pt S hf 17	R 4 & 5 S	M F and O	1
J 124	Burwell, George V.	pt S hf 19, pt 18	R 3 & 4 S	M F and O	1
J 119	Burwell, Francis	N pt 18 & other prem.	R 4 & 5 S	M F and O	1
J 126	Bathurst, Wm	E pt 21, 22	R 2 S	M F and T	1
J 127	Brown, George	W pt S hf 21	R 1 S	M F and T	1

POLLING SUB-DIVISION No. 1.

Roll No.	NAME.	LOT.	Concession or Street.	Other Description.	P.O.
J 123	Bartlett, Jonathan	S hf 19, pt S hf 20	R 1 S	M F and O	3
1216	Burwell, Beverly	21, 22, 23	R 1 N, Del W.	M F and O	3
J 508	Bathurst, Ephraim	24	R 1 S	M F and T	3
	<i>Bathurst Hill, Ext 21 & 22, 1925</i>			<i>M F and FS</i>	
J 273	Clark, John G	N pt 19	R 4 S	M F and O	3
J 255	Clark, Edward	pt N hf 21	R 1 N	M F and T	1
J 248	Cobbald, James R	N hf 13, pt 14	R 1 N	M F and T	6
249	Cobbald, James	N hf 13, pt 14	R 1 N	M F and T	6
275	Clark, Joseph	pts 18 & 19	R 1 N	M F and O	1
260	Coulter, John	W hf 4	W M R	M F and O	4
J 259	Collins, Thomas	E hf 5	W M R	M F and O	4
J 224	Clark, Nathaniel Jr	S E hf N hf 19	R 3 S	M F and O	1
J 460	Clark, Edward	pts 22, 23	R 1 N	M F and O	1
J 246	Carruthers, George	S hf 16, pt 15	R 1 N	M F and O	6
J 258	Cox, James	6	W M R	M F and O	4
J 270	Coveny, Thomas	N hf 19, S hf 17	R 3 S	M F and T	3
J 271	Coveny, John J	N hf 19, S hf 17	R 3 S	M F and T	3
J 272	Coveny, Edward	N hf 19, S hf 17	R 3 S	M F and T	3
J 261	Cobban, Wm	S pt 3	W M R	M F and O	4
J 266	Chambers, James	pt 12 & 13	R 5 S	M F and O	4
267	Chambers, John B	pt 12 & 13	R 5 S	M F and FS	4
268	Chambers, Thomas	pt 12 & 13	R 5 S	M F and FS	4
J 265	Cobban, Robert	S pt 12	R 5 S	M F and O	4
J 262	Clark, John N	N hf 3	E M R	M F and O	4
263	Clark, Alex	N hf 3	E M R	M F and FS	4
J 274	Cudney, Wm	S hf N hf 17	R 3 S	M F and T	3
J 303	Donaldson, David J	N hf 20	R 1 S	M F and O	3
J 302	Daunt, George	N pt N hf 20 & other pre.	R 1 N	M F and O	3
J 304	Donovan, Wm	S hf N hf 20	R 2 S	M F and O	3

POLLING SUB-DIVISION No. 1.

5

P.O.	Roll No.	NAME.	LOT.	Concession or Street.	Other Description.	P.O.
3	316	Erwin, George	E hf S hf 14	R 1 S	M F and O	6
3	317	Erwin, Albert	E hf S hf 14	R 1 S	M F and F S	6
3	J 315	Erwin, James	W pt S hf 14	R 1 S	M F and O	6
	319	Evans, Wm S	S pt 12	R 5 S	M F and T	4
3	1217	Fisher, Benjamin	Park 1 Del W	R 1 N	M F and T	3
1	J 351	Fisher, Wm	N hf 20	R 1 N	M F and T	3
6	352	Forbes, Duncan	pt S hf 18	R 1 N	M F and O	3
6	J 347	Fisher, James	N hf 16	R 1 S	M F and T	6
1	343	Fisher, George	pt N hf 13	R 1 S	M F and O	6
4	348	Fisher, James	N hf 13	R 1 S	M F and O	6
4	349	Fisher, Wm H	N hf 13	R 1 S	M F and F S	6
1	355	Faulds, Thos	7	W M R	M F and O	4
1	356	Faulds, Edward A	7	W M R	M F and F S	4
6	357	Faulds, John F	7	W M R	M F and F S	4
4	J 353	Faulds, Wm M	2	W M R	M F and O	4
3	359	Forsythe, John	S pt 1	E M R	M F and O	4
3	W 354	Forsythe, Arch	S pt 1	E M R	M F and O	4
3	J 679	Forsythe, David	pt 12	R 5 S	M F and O	4
4	680	Forsythe, James	pt 12	R 5 S	M F and O	4
4	358	Forsythe, George	S pt 1	E M R	M F and O	4
S 4	J 395	Giles, John	S hf 13	R 1 S	M F and O	6
S 4	J 402	Guest, Wm A	N hf 20	R 4 S	M F and O	3
4	J 400	Giles, Wm Jr	22, 23 pt 21	R 4 S	M F and T	3
S 4	1219	Giles, Wm sr	3 & 4 King st Del W	R 1 N	M F and O	3
3	J 399	Gowanlock, John	N hf 17	R 4 S	M F and T	3
	J 401	Giles, James	22, 23 pt 21	R 4 S	M F and T	3
O 3	459	Haws, George	S E cor N hf 22	R 1 N	M F and O	1
O 3	J 461	Hay, John	pt 22 and 23	R 1 N	M F and T	3
O 3	<i>W Haws Henry</i>	<i>22/23 pt</i>	<i>1225</i>	<i>M F and F S</i>	<i>3</i>	

POLLING SUB-DIVISION No. 1.

Roll No.	NAME.	LOT.	Concession or Street.	Other Description.	P.O.
J 470	Haws, John.....	N hf 19	R 2 S	M F and T....	3
J 452	Hetley, Wesley	W hf S hf 15	R 1 N.....	M F and O	6
J 464	Howe, John M	S pt N pt 7.....	E M R.....	M F and O....	3
J 462	Howe, John F	N hf 17	R 2 S	M F and O....	3
J 467	Haggarty, Thomas	pt blk A	E M R.....	M F and T....	3
J 468	Haggarty, John	E pt S hf 19, pt 20	R 3 S.....	M F and O....	3
J 469	Haggarty, George.....	S hf 20 & other prem.....	R 4 S....	M F and O....	3
11220	Haws, Samuel	{ Ad st 12, 13, 14 and } { other prem Del W }	R 1 N	M F and O....	3
J 479	Janes, Henry.....	S W cor E hf 20.....	R 1 N	M F and O....	3
J 480	Jenkins, Alfred.....	E pt S hf 17	R 1 S	M F and O....	3
481	Jones, Edwin.....	Bkn Ft 20	R 5 S	M F and O. ...	3
J 509	Kipp, Wm H.....	24	R 1 S	M F and T....	3
510	King, Thomas	S cor S hf 17	R 2 S.....	M F and O....	3
532	Lewis, John	N cor N hf 22.....	R 1 N	M F and O....	3
533	Lowthian, Richard	W pt N hf 22.....	R 1 N	M F and O....	3
J 538	Lowthian, Rich V.....	pt 23.....	R 1 N	M F and O....	3
J 539	Lockwood, Henry jr.	S pt N $\frac{1}{2}$ 20 & other pre.....	R 1 S, R 1 N.	M F and O....	3
J 540	Lockwood, Chas H.....	S hf 21	R 1 N	M F and O....	3
J 541	Lockwood, Wm W	pt S hf 20	R 1 N	M F and O....	3
J 542	Luce, Asa	pt 17.....	R 1 S, R 1 N.	M F and O....	3
J 543	Luce, George.....	pt 17.....	R 1 S, R 1 N.	M F and O....	3
J 545	Lockwood, John A	N hf 15	R 1 S	M F and O....	6
J 544	Lang, James	2	E M R.....	M F and O....	4
1221	Lockwood, Henry sr.	9 to 13 K st Del W	R 1 N	M F and O....	3
J 566	Miller, Frank.....	S pt 3 & other prem.....	E M R.....	M F and T....	4

Roll No.

668

J 673

677

J 678

J 675

J 676

1222

1218

J 683

J 684

J 705

J 706

J 703

J 709

J 707

1222

W

72

J 72

J 78

78

78

J 77

78

78

78

78

78

78

W

POLLING SUB-DIVISION No. 1.

Roll No.	NAME.	LOT.	Concession or Street.	Other Description.	P.O.
	668 McKenzie, John	S W cor S hf 13.	R 1 N	M F and O.	6
	673 McGregor, Peter	pt 1 and D	W M R	M F and O.	4
	677 McIntyre, Dugald	pt 12	W M R	M F and O.	4
	678 McGregor, Alex	pt 12	R 5 S	M F and O.	4
	675 McGregor, Thomas	pt D	W M R	M F and O.	4
	676 McGregor, John	S pt D	W M R	M F and O.	4
	1222 McFee, Alex	Bir st 18, 19, 20 Del W.	R 1 N	M F and O.	3
	1218 McFee, George	Park 1 Del W.	R 1 N	M F and O.	3
	683 McDonald, Wm	pt 21	R 4 S	M F and T.	3
	684 McDonald, Thos	pt 21	R 4 S	M F and T.	3
	705 Nagle, John	S pt 19	R 1 N	M F and O.	3
	706 Nagle, Walter	E hf N hf 17	R 1 S	M F and O.	3
	703 Nash, Ephriam	N hf 14.	R 1 S	M F and O	6
	709 Nagle, Robert	S hf 18.	R 1 S	M F and O.	3
	707 Nagle, Samuel	N pt 3.	W M R	M F and O.	4
	1223 Nagle, Thomas	King st 1 & 2 Del W.	R 1 N	M F and O.	3
	<i>W Nash Frank N/2 14</i>		<i>R 1 S</i>	<i>M F and T S. 6</i>	
	722 Orr, Joseph	S W cor 18	R 1 N	M F and T.	1
	724 Orr, Rowland	W pt N hf 5	W M R	M F and O.	6
	786 Pulling, James	W hf S hf 18, pt 17	R 2 S	M F and O.	1
	787 Pulling, Henry	W hf S hf 18, pt 17	R 2 S	M F and F S	1
	788 Pulling, Charles	W hf S hf 18, pt 17	R 2 S	M F and F S	1
	779 Portsmouth, Peter	S hf 16.	R 1 S	M F and O.	3
	780 Portsmouth, Rich.	S hf 16.	R 1 S	M F and F S.	3
	781 Portsmouth, Thos.	S hf 16.	R 1 S	M F and F S.	3
	782 Price, Richard	S hf 8 & other prem	W M R	M F and O.	1
	783 Price, Samuel	S hf 8 & other prem	W M R	M F and F S.	1
	784 Price, Wm.	S hf 8 & other prem	W M R	M F and F S.	1
	<i>W Peufold Hole t. Rt 23 & 24</i>		<i>R 1 N</i>	<i>M F and F S</i>	<i>3</i>

Roll No.	NAME.	LOT.	Concession or Street.	Other Description.	P.O.
J1224	Penfold, Henry	pt 23, 24 & other prem.	R 1 N	M F and O	3
1225	Penfold, George E.	pt 23, 24 & other prem.	R 1 N	M F and F S.	3
1226	Pulling, Wm.	Sewel lot & 6, 7, Del W.	R 1 N	M F and O	3
J 809	Reep, Wm sr.	N W pt 20	R 3 S	M F and O	3
J 810	Reep, Wm jr.	N W pt 20	R 3 S	M F and T	3
J 811	Reep, John	N W pt 20	R 3 S	M F and T	3
J 808	Rockey, Wm H.	pt gore 20 and 21	R 1 N	M F and O	1
J 829	Robinson, Robert	W hf 5	E M R	M F and O	4
830	Robinson, Henry J.	W hf 5	E M R	M F and F S.	4
J 828	Reily, John D.	S hf S hf 19	R 2 S	M F and O	3
J 831	Reily, Wm H.	W hf S hf 19, pt 18	R 2 S	M F and O	3
832	Reily, Wm J.	W hf S hf 19, pt 18	R 2 S	M F and F S.	3
833	Reily, Robert H.	W hf S hf 19, pt 18	R 2 S	M F and F S.	3
J 916	Seabrook, Sidney	22, 23, pt 21	R 1 S	M F and O	3
J 915	Stiltz, Charles	E hf N hf 19	R 1 N	M F and O	1
913	Sleath, Alfred	pt S hf 13	R 1 N	M F and O	6
914	Smith, Robert	pt S hf 13	R 1 N	M F and O	6
J 907	Shaw, Wm.	W pt S hf 15	R 1 S	M F and T	6
J 918	Stuart, Wm	N hf 18	W M R	M F and T	6
921	Stuart, Chas	N pt E pt 4	E M R	M F and O	1
922	Stuart, John	N pt E pt 4	E M R	M F and F S.	1
J 923	Stuart, Charles A.	W hf E hf 5	E M R	M F and T	1
919	Sweeney, John	S pt 12	R 5 S	M F and O	4
J 945	Thompson, Thos	S hf 14, and other prem.	R 1 N	M F and O	6
J 957	Toles, Peter	E pt S $\frac{1}{2}$ 18 & other prem.	R 1 N	M F and O	1
946	Tull, Samuel	pt S hf 13	R 1 N	M F and O	6
J 948	Tull, Jchn	N $\frac{1}{2}$ S $\frac{1}{2}$ 17 & other prem	R 2 S	M F and O	1
J1027	Thomas, Joseph	S W pt 21	R 2 S	M F and T	3

Roll No.	NAME.	LOT.	Concession or Street.	Other Description.	P.O.
1227	Vrooman, John	S Del W	R 1 N	M F and O	3
987	Vennor, John	pt 1	E M R	M F and O	4
986	Vail, John	pt N hf 14	R 1 N	M F and O	6
1023	Weld, Octavns	S hf 20	R 2 S	M F and O	3
1023	Waters, Wm H	E pt N hf 18	R 1 N	M F and O	1
1020	Whiting, James	S hf E pt 4	E M R	M F and O	1
1012	Williamson, John	E hf S hf 15	R 1 S	M F and O	6
1018	Whiting, Wm B	pt 1	W M R	M F and O	4
1019	Whiting, Wm F	pt 1	W M R	M F and F S	4
1021	Walker, Barton	E hf 5	E M R	M F and O	4
1026	Weld, Henry J	S W pt 21	R 2 S	M F and O	3
1024	Wightman, John	pts 18 and 19	R 4 S	M F and T	3

PART III.—Persons Entitled to Vote at Municipal Elections ONLY.

103	Burwell, Rachael A.	S hf 17	R 3 S	O	3
269	Chase, H P	N W cor 1	E M R	O	20
254	Clark, Thursa	pt N hf 21	R 1 N	O	1
1215	Deadman, Mrs	King st 5	R 1 N	O	3
318	Forsythe, Mrs	pt N hf 12	R 5 S	O	4
350	Fisher, Rachel	N hf 20	R 1 N	O	3
682	Gowanlock, John	pt 21	R 4 S	O	23
394	Goodrich, Nancy	W cor S hf 17	R 1 S	O	6
465	Higgs, Mary	S pt 1	E M R	O	4
493	Howe, James	N hf 17	R 2 S	O	19
482	Jarnain, Henry	W hf N hf 20	R 2 S	O	14

W. Forsythe's field 350 1

Roll No.	NAME.	LOT.	Concession or Street.	Other Description.	P.O.
528	Moore, Mary	24	R 1 S	O	30
708	Nagle, Amelia	N hf 18	R 2 S	O	3
723	Orr, Nancy	E pt N hf 5	W M R	O	6
917	Price, Thomas	pt N hf 18	W M R	O	6
247	Robinette, Thos C.	N hf 13	R 1 N	O	19
1024	Rowland, Edward	pts 18 and 19	R 4 S	O	2
466	Scott, Martha	pt blk A	E M R	O	4
924	Stuart, Alex	W hf E hf 5	W M R	O	27

PART III.—Persons Entitled to Vote at Elections to the Legislative Assembly ONLY.

264	Clark, Wm	N hf 3	E M R	M F	4
<i>W</i>	<i>Louisey Edward. 23</i>		<i>R 1 S</i>	<i>M F</i>	<i>3</i>
<i>W</i>	<i>McDonald Hartman. 31/1</i>		<i>R 5 S</i>	<i>M F</i>	<i>3</i>
674	McGregor, John sr.	pt 1 and D	W M R	M F	4
<i>W</i>	<i>Anderson J. 1/1</i>		<i>R 1 S</i>	<i>M F</i>	<i>1</i>
785	Price, Robert	S hf 8	W M R	M F	1
<i>W</i>	<i>Stephen J. 1/1</i>		<i>R 1 S</i>	<i>M F</i>	<i>1</i>
<i>W</i>	<i>Smith Fred 1/1</i>		<i>R 5 S</i>	<i>M F</i>	<i>4</i>
920	Smith, Arthur G	pt 12	R 5 S	M F	4
<i>W</i>	<i>Clouston Wm 1/1 D</i>		<i>R 1 S</i>	<i>M F</i>	<i>4</i>
<i>W</i>	<i>Forsythe Marion 1/1 2</i>		<i>R 5 S</i>	<i>M F</i>	<i>11</i>
<i>W</i>	<i>Forsythe Marion 1/1 3</i>		<i>R 1 S</i>	<i>M F</i>	<i>1</i>
<i>W</i>	<i>Grant Mill 1/1</i>		<i>R 5 S</i>	<i>M F</i>	<i>3</i>
<i>W</i>	<i>King William 1/1 17</i>		<i>R 5 S</i>	<i>M F</i>	<i>3</i>
<i>W</i>	<i>McDonald May 1/1 11</i>		<i>R 1 S</i>	<i>M F</i>	<i>4</i>
<i>W</i>	<i>McDonald Robert 1/1 D</i>		<i>R 1 S</i>	<i>M F</i>	<i>4</i>
<i>W</i>	<i>Wilson 1/1</i>		<i>R 4 S</i>	<i>M F</i>	<i>3</i>
<i>W</i>	<i>Wilson 1/1</i>		<i>R 2 S</i>	<i>M F</i>	<i>3</i>
<i>W</i>	<i>Wilson 1/1</i>		<i>R 5 S</i>	<i>M F</i>	<i>3</i>
<i>W</i>	<i>Wilson 1/1</i>		<i>R 1 S</i>	<i>M F</i>	<i>3</i>
<i>W</i>	<i>Wilson 1/1</i>		<i>R 1 S</i>	<i>M F</i>	<i>4</i>

Polling Sub-Division No. 2,

Comprising all that portion of the Township lying West of the Side Road between Lots 12 and 13, and South of the 2nd Con.

PART I.--Persons Entitled to Vote at BOTH Municipal Elections and Elections to the Legislative Assembly.

Roll No.	NAME.	LOT.	Concession or Street.	Other Description.	P.O.
J 95	Beattie, Samuel R	W hf S hf 6	1	M F and O	12
J 94	Bateman, Allan W	S hf 10	1	M F and O	6
96	Bateman, Ed C	N hf 12	R 1 N	M F and O	6
J 98	Bateman, Wm R	N W ¼ S ½ 12, pt 12	R 1 S, R 1 N	M F and O	6
99	Bateman, Chas	N W ¼ S ½ 12, pt 12	R 1 S, R 1 N	M F and O	6
J 100	Bateman, Thos	W hf S hf 12	R 1 N	M F and O	6
101	Bateman, Robt	pt S hf 11, pt N hf 11	R 1 S, R 1 N	M F and O	6
104	Bateman, Edward	N hf 10 and other prem	R 1 S	M F and O	6
J 105	Bateman, Wm. J	N hf 10 and other prem	R 1 S	M F and O	6
J 102	Bateman, Ed A	S hf 10	R 1 N	M F and O	6
106	Bateman, Archie C	N hf 10 and other prem	R 1 S	M F and F S	6
J 107	Burch, Wm	S W pt S hf 7	R 1 S	M F and T	5
J 305	Bateman, Chas T	S hf 11	R 1 S	M F and O	6
J 108	Bateman, Sydney	S E corner S hf 12	R 1 S	M F and O	6
128	Beecroft, Wm	pt S hf 9	R 1 N	M F and O	3
J 97	Bateman, Well'g'n T	N hf 12	R 1 N	M F and T	6
J 536	Brown, Henry	S hf 8	R 1 S	M F and T	5
472	Baneroff, Joseph	36, 37, 38 Melb	R 1 N	M F and O	5
J 220	Cawthrope, Geo	N hf 1	1	M F and O	12
221	Cawthrope, Geo E	N hf 1	1	M F and F S	12
225	Clark, Nathaniel	N hf 10	1	M F and O	1
J 227	Clark, James	S E pt 10	2	M F and O	1
J 226	Clark, Wm	N hf 10	1	M F and T	1

P.O.
 .30
 3
 6
 6
 19
 2
 4
 27
 ive
 4
 3
 3
 4
 1
 2
 /
 4
 7
 /
 3
 3
 7
 7
 3
 3
 5
 4

Roll No.	NAME.	LOT.	Concession or Street.	Other Description.	P.O.
228	Coleman, Wm H	N hf 11	1	M F and O	1
J 229	Coleman, Darius	N hf 11, part 12	1 and 2	M F and T	1
230	Coleman, Arthur	N hf 11, pt 12	1 and 2	M F and F S	1
J 234	Cooper, Geo F	S ½ N ½ 2 and other prem	1	M F and T	5
236	Cavan, Hugh	S hf 1	1	M F and T	5
J 237	Cavan, Caleb	S hf 1	1	M F and T	5
J 238	Cavan, James	S hf 1	1	M F and T	5
J 240	Carruthers, Robt	pt N hf 6, pt S hf 6	R 1 N	M F and O	5
J 242	Carruthers, Arthur	pt S hf 5, pt 6	R 1 N	M F and O	5
J 243	Carruthers, Jas	S hf 4, pt S hf 5	R 1 N	M F and O	5
244	Cady, Isaae M	W pt N hf 1	R 1 S	M F and O	5
J 245	Campbell, John C	pt N hf 1	R 1 S	M F and O	5
1177	Cady, John H	72 Melb	R 1 N	M F and O	5
1178	Coulter, Ralph	47, 48	R 1 N	M F and O	5
1173	Cooper, James	56, pt 55 Melb & other p	R 1 N	M F and O	5
1174	Cooper, Thomas	29, 30, Melb	R 1 N	M F and O	5
1175	Cooper, John	29, 30, Melb	R 1 N	M F and O	5
1179	Campbell, Neil	Sub 10, pt 1	R 1 N	M F and O	5
	<i>W Cavan Jones 9/11</i>		/	<i>and FS 1</i>	
J 307	Duneanson, Dugald	W hf N hf 2	R 1 N	M F and O	5
J 301	Dennis, Joseph	S hf 3	1	M F and T	5
J 296	Duneanson, Donald	N hf 5	R 1 S	M F and O	5
J 306	Dumigan, David A	S hf 11	R 1 S	M F and T	6
J 313	Errett, Thomas	N hf 3	R 1 N	M F and O	5
J 314	Errett, Henry	E hf S hf 7	R 1 N	M F and O	5
1180	Evans, Alfred C	E cor mill prop	R 1 N	M F and O	5
J 344	Fenwick, Edward	S hf 8	R 1 N	M F and O	5
J 345	Forsythe, George	E hf N hf 6	R 1 S	M F and O	6

P.O.	Roll No.	NAME.	LOT.	Concession or Street.	Other Description.	P.G.
.. 1	J 397	Griffith, Fred L.....	S hf 3 and other	prem. R 1 N	M F and T	5
.. 1	J 398	Grigg, Wm.....	S hf 5, pt 6	R 1 S	M F and O	5
.. 1	1181	Gowman, Thos.....	E cor 1, N cor 1	R 1 N, R 1 S	M F and O	5
.. 5	1182	Graves, Josiah.....	67 to 70, Melb	R 1 N	M F and O	5
.. 5						
.. 5		446 Howe, Patriek.....	S hf 8, pt N hf 8	1	M F and O	6
.. 5		447 Howe, Edward.....	S hf 8, pt N hf 8	1	M F and F S	6
.. 5		448 Howe, Francis.....	S hf 8, pt N hf 8	1	M F and F S	6
.. 5	J 449	Howe, Timothy.....	S hf 12	1	M F and O	6
.. 5	J 450	Howe, James.....	E pt S hf 11	1	M F and O	6
.. 5		451 Halloway, Alfred....	E pt S hf 5	R 1 N	M F and O	5
.. 5	J 453	Haggarty, James.....	S hf 6	R 1 S	M F and O	5
.. 5	J 454	Haggarty, Geo J.....	S hf 10 & other prem	R 1 S	M F and T	6
.. 5	1187	Harvey, Henry.....	S pt mill prop Melb	R 1 N	M F and O	5
.. 5	1183	Hill, Frederick.....	43 and 44 Melb	R 1 N	M F and O	5
.. 5	J 1184	Hardy, Thos.....	49, 64, 65, Melb, pt 2	R 1 N	M F and O	5
.. 5	1186	Harvey, Frank.....	19 Melb	R 1 S	M F and O	5
.. 5		949 Hendrie, James.....	pt N hf 7 and 8	R 1 N	M F and O	5
.. 5	1185	Hardy, Francis.....	49, 64, 65, pt 2	R 1 N	M F and O	5
.. 5						
.. 5	1188	Johnston, Arthur M..	1	R 1 S	M F and O	5
.. 5						
.. 6		502 Kidd, Thos.....	S hf 9	1	M F and O	6
.. 5	J 503	Kidd, Jos R.....	E hf N hf 10	R 1 N	M F and O	6
.. 5	J 504	Kidd, John J.....	E hf N hf 10	R 1 N	M F and O	6
.. 5	J 506	Kain, John.....	S cor S hf 11	R 1 N	M F and T	6
.. 5						
.. 5	1191	Long, Joseph.....	1, 13 to 16 Melb	R 1 N	M F and O & T	5
.. 5	1190	Loek, H W.....	Sub 11, Melb	R 1 N	M F and T	5
.. 6	1193	Lane, Alfred.....	Sub 25, Melb	R 1 S	M F and O	5
.. 6	J 537	Lesley, Wm.....	S hf 8	R 1 S	M F and T	5

Roll No.	NAME.	LOT.	Conces-ion or Street.	Other Description.	P.O.	Roll No.
559	Marshman, Benj'n	pt S hf 3, pt 2	1 & R 1 N	M F and O	5	823
J 560	Mills, James	pt S hf 9	R 1 N	M F and O	6	824
561	Mills, Alfred	pt S hf 9	R 1 N	M F and F S	6	J1199
J 563	Marshman, George	N W corner N hf 2	R 1 S	M F and O	5	1200
J 562	Mills, Edward	E hf N hf 12	R 1 S	M F and O	6	825
300	Marshman, Simeon	S hf 3	1	M F and O	5	1201
J 552	Muldon, John	W hf N hf 10	R 1 N	M F and O	6	
656	McRoberts, John sr	N hf 5	1	M F and O	12	J 897
J 657	McRoberts, Jas jr	N hf 4	1	M F and O	12	J 900
J 362	McCracken, John H. E	hf S hf 2	1	M F and O	12	908
J 664	McCracken, Sammel	N hf 7 and other prem	1	M F and O	12	J 909
665	McCracken, Ernest	N hf 7 and other prem	1	M F and F S	12	1204
J 667	McLean, Allan	N pt 9	R 1 N	M F and T	6	J 910
J 670	McNeil, Malcolm	pt S hf 1	R 1 S	M F and O	5	J 911
J 671	McNeil, John A	pt S hf 1	R 1 S	M F and O	5	912
1194	McLellan, David	N W pt mill prop	R 1 N	M F and O	5	1230
J1251	McDougall, Alex	pt N hf 1	R 1 S	M F and T	5	1202
1198	McAlpine, Alex	pt 1	R 1 S	M F and O	5	J 906
J 700	Near, Wilson	N hf 4	R 1 N	M F and O	5	935
J 701	Nagle, Charles	S hf 4 and other prem	R 1 S	M F and O	5	J 936
J 702	Nagle, Thomas E	W hf S hf 7	R 1 N	M F and O	6	J 950
J1195	Nichols, Richard	1 and 2 Melb	R 1 N	M F and O	5	J 942
1196	Petch, Isaac	Sub 9 Melb	R 1 N	M F and T	5	J 943
548	Perkins, John	N W cor 9	R 1 N	M F and T	6	J 944
J 822	Richards, George	E pt N hf 4	R 1 S	M F and O	5	J1207
J 826	Richards, Wilson	W pt 3, pt S hf 1	R 1 S	M F and O	5	J1208
						J1209
						J1210
						J1205

P.O.	Roll No.	NAME.	LOT.	Concession or Street.	Other Description.	P.O.
...	5	823 Richards, George sr.	N hf 5, E pt 3	R 1 S, R 1 N	M F and O	5
...	6	824 Richards, James	N hf 5, E pt 3	R 1 S, R 1 N	M F and F S	5
S.	6	J1199 Robinson, Wm J.	25, 27 Melb.	R 1 N	M F and O	5
...	5	1200 Richards, Edmund.	26, 28 Melb.	R 1 N	M F and T	5
...	6	825 Richards, John W.	N hf 5, E pt 3	R 1 S, R 1 N	M F and F S	5
...	5	1201 Reily, George	sub 8	R 1 S	M F and O	5
...	6					
...	12	J 897 Stockings, David.	E hf N hf 2, pt 3	1	M F & O & T	12
...	12	J 900 Stover, Peter	E hf N hf 8	1	M F and T	6
...	12	908 Small, Andrew sr.	S hf 7 and other prem	1	M F and O	5
...	12	J 909 Small, Robert	S hf 7 and other prem	1	M F and T	5
S.	12	1204 Straip, Andrew	sub 1, Melb	R 1 S	M F and T	5
...	6	J 910 Small, James	S hf 7 and other prem	1	M F and T	5
...	5	J 911 Sawyer, Wm E	pt S hf 11	1	M F and O	1
...	5	912 Sawyer, George E.	pt S hf 11	1	M F and F S	1
...	5	1230 Sponenburg, Geo W.	pt 6, Melb	R 1 S	M F and O	5
...	5	1202 Scuddamore, H S	71, 40, 41 Melb	R 1 N	M F and O	5
...	5	J 906 Small, Andrew jr.	E hf N hf 6	1	M F and O	5
...	5					
...	5	935 Trott, John sr.	N hf 9	1	M F and O	1
...	5	J 936 Trott, Wm A	N hf 9	1	M F and T	1
...	6	J 950 Trott, Wm S.	pt N hf 7, 8	R 1 N	M F and T	5
...	5	J 942 Trott, Edward.	N hf 11	R 1 N	M F and T	6
...	5	J 943 Trott, John jr.	N hf 11	R 1 N	M F and T	6
...	5	J 944 Tanner, George	S hf 7	R 1 S	M F and T	6
...	6	J1207 Tolson, Wm.	12, 73, 74, 75, 76 Mel	R 1 N	M F and T	5
...	6	J1208 Tolson, John	12, 73, 74, 75, 76 Mel	R 1 N	M F and T	5
...	5	J1209 Tolson, Wm E.	12, 73, 74, 75, 76 Mel	R 1 N	M F and T	5
...	5	J1210 Tolson, Joseph H	12, 73, 74, 75, 76 Mel	R 1 N	M F and O	5
...	5	J1205 Torrence, Jas W.	59 to 63, Mel	R 1 N	M F and O	5

Roll No.	NAME.	LOT.	Concession or Street.	Other Description.	P.O.
J1212	Vail, George	17 and 18, Melbourne	R 1 S	M F and T	5
J1006	Wellman, James	W pt 1	R 1 N	M F and O	5
J1008	Williams, Wm E.	E hf N hf 8	R 1 S	M F and O	6
1009	Williams, Richard	.9	R 1 S	M F and O	6
1010	Williams, Rich A	.9	R 1 S	M F and F S.	6
1213	Wellman, Geo.	53, 54, 55, 25, Mel	R 1 N	M F and O	5
J1062	Williams, Thos	pt N hf 2.	R 1 S	M F and T	5
1214	Williamson, Chas	N cor mill prop.	R 1 N	M F and O	5
J1063	Young, Wm.	N hf 12 and other prem	1	M F and O	1

PART II.—Persons Entitled to Vote at Municipal Elections ONLY.

1176	Conn, Ann	39 Mel, 16 Mid	R 1 N, 2	T and O	5
233	Cooper, Eliza	S $\frac{1}{2}$ W $\frac{1}{2}$ 2 & other prem	1	O	5
241	Carruthers, Delilah	N hf N W qr 6	R 1 S	O	5
396	Griffith, Mary J	S hf 3 and other prem	R 1 N	O	5
455	Faggerty, Ann	S hf 10.	R 1 S	O	5
1211	Kent, Wm	17 and 18 Melb	R 1 S	O	29
505	Lucas, Alonzo	S cor S hf 11	R 1 N	O	14
535	Marshman, Job	S hf 8	R 1 S	O	5
666	McCraeken, Cath'ne.	N pt 9.	R 1 N	O	6
456	Nagle, Mary	S hf 10	R 1 S	O	6
1011	Porter, Robert	E hf S hf 5	1	O	5

Roll No.	NAME.	LOT.	Concession or Street.	Other Description.	P.O.
1197	Roach, Wm H	pt 1	R 1 S	O	28
1061	Richards, Wm C	pt N hf 2	R 1 S	O	5
947	Trayte, George	pt E hf N hf 1	R 1 S	O	5
1007	Watson, Frances	W hf N hf 12	R 1 S	O	6

PART III.—Persons Entitled to Vote at Elections to the Legislative Assembly ONLY.

16	Atkinson, Francis	S pt 1	R 1 N	M F	5
239	Crozier, Wm	N hf 9	R 1 S	M F	12
	<i>W Campbell graph. St 1</i>		<i>1411</i>	<i>M F</i>	<i>5-</i>
295	Depotty, George	S hf 4	1	M F	5
445	Hearns, Edward	S hf 1	1	M F	5
	<i>W Murray Charles St 1</i>		<i>1418</i>	<i>M F</i>	<i>5-</i>
564	Murray, Henry B.	pt 1	R 1 S	M F	5
663	McDonald, Hartman	N hf 12	1	M F	1
669	McDongall, Alex	pt N hf 1	R 1 S	M F	5
	<i>W Robinson John 25 x 27 mells</i>		<i>1411</i>	<i>M F</i>	<i>5-</i>
819	Ruckle, David	E hf N hf 10	R 1 N	M F	6
970	Taylor, William	S hf 4	R 1 N	M F	5
	<i>W Bellum corner. St 1</i>		<i>1411</i>	<i>M F</i>	<i>5-</i>

Polling Sub-Division No. 3,

Comprising all that portion of the Township lying in the 1st and 2nd Concessions East of the Side Road between Lots 12 and 13.

PART I.--Persons Entitled to Vote at BOTH Municipal Elections and Elections to the Legislative Assembly.

Roll No.	NAME.	LOT.	Concession or Street.	Other Description.	P.O.
J 26	Abray, George	pt E hf 22	2	M F and T	1
J 18	Arnold, James	S pt E pt 16 & other pre	2	M F & T & O.	1
1066	Agnew, Robert	blk H 16, pt 14 and 15.	2 Mt Bgs.	M F and O.	1
1076	Brothers, George	blk I 16	2 Mt Bgs.	M F and T.	1
74	Baneroff, Wm G	pt N hf N hf 20.	2	M F and O.	2
J 113	Brown, Wm	E cor S hf 21	1	M F and O.	3
J 114	Brown, David	E cor S hf 21	1	and T.	3
J 110	Bell, Jchn	E hf S hf 15.	1	M F and O.	1
J 111	Borley, Wm E	S hf 18, pt N hf 19	1 & R 1 N	M F and O.	1
112	Borley, Ernest	S hf 18, pt N hf 19	1 & R 1 N	M F and F S.	1
1067	Brownson, Sam'l C	27 to 31 and other pre	2 Mt Bgs.	M F and O.	1
1068	Broom, Thomas	313 to 319 & other pre	2 Mt Bgs.	M F and O.	1
1069	Baker, Thomas	W Ad st, pt 18	2 Mt Bgs.	M F and O.	1
J1073	Bignall, George	blk E, 17 and 18.	2 Mt Bgs.	M F and O.	1
J1081	Bartlett, Henry A	blk K, 1 and 2	2 Mt Bgs.	M F and T.	1
1072	Bartlett, Benj F	blk C, 1, 17 pt 2.	2 Mt Bgs.	M F and O.	1
J1077	Betts, John	blk C, 16, pt 15.	2 Mt Bgs.	M F and O.	1
1079	Bryden, Robert	blk B, 18	2 Mt Bgs.	M F and T.	1
J1074	Bolton, Alfred	blk C, 13, 14, pt 12	2 Mt Bgs.	M F and O.	1
1070	Bidnall, Wm	blk G, 18.	2 Mt Bgs.	M F and O.	1
J1071	Bishop, David	blk H, 1, 2, 3.	2 Mt Bgs.	M F and O.	1

Wm Braddon & H Blk H pt 18 2 mt bgs M F & T 1

Roll No. 1090 257 J 251 J 256 J 232 1090 1091 1089 J 255 1088 292 297 298 299 1093 J 388 J1101 J1099 1100 1102 1104 457 458 J 442 471 1115 1114

Roll No.	NAME.	LOT.	Concession or Street.	Other Description.	P.O.
1090	Clark, Edward	blk B, 3 pt 2	2	M F and O	1
257	Cade, Robert	N hf 19, pt S hf 19	1	M F and O	1
J 251	Clark, Pearson	pts S hf 21, 22	1 and 2	M F & O & T	1
J 256	Coy, John	pt N hf 21 & other pre	1 & R 1 N	M F and O	1
J 232	Cartner, Robert	W hf S hf 18	2	M F and O	1
1090	Crozier, John	blk H, pt 18 & other pre	2 Mt Bgs	M F and O	1
1091	Crozier, George	blk H, pt 18 & other pre	2 Mt Bgs	M F and T	1
1089	Crooks, William	23 to 26 and other pre	2 Mt Bgs	M F and O	1
J 253	Corcoran, Dennis	pt N hf 21 and 22	1	M F and T	1
1088	Clay, Henry	blk I, 1	2 Mt Bgs	M F and O	1
292	Dunn, Wm sr	E pt 24	2	M F and O	10
297	Dawson, Joseph	N hf 13	1	M F and O	1
298	Dawson, Vickers	N hf 13	1	M F and F S	1
299	Dawson, Josh H	N hf 13	1	M F and F S	1
	<i>copy name not in map</i>				
1095	Fisher, John J	blk H, pt 14 and 15	2 Mt Bgs	M F and O	1
J 388	Graves, Angus	Cen pt N hf 22	2	M F and O	1
J 1101	Graves, Ben	blk K, 17 blk E 13, 16	2 Mt Bgs	M F and T	1
J 1099	Gillam, Hiram	pt S hf 18 & other prem	2 Mt Bgs	M F and O	1
1106	Grigg, John	blk K, 16	2 Mt Bgs	M F and O	1
1103	Graves, Wm J	171 and 107	2 Mt Bgs	M F and T	1
1104	Graves, Albert	171 and 107	2 Mt Bgs	M F and T	1
457	Heath, Thos	cen pt 21	1	M F and O	1
458	Heath, Robt	cen pt 21	1	M F and T	1
J 442	Heath, Francis	N hf N hf 21	2	M F and O	1
471	Healey, Jas	pt 16	2	M F and O	1
1113	Hadden, Jos sr	E pt N hf 18	2	M F and O	1
1114	Hadden, Joseph jr	E pt N hf 18	2	M F and O	1
	<i>Heathick premises blk E 171 172 173 Mt F and T</i>				

POLLING SUB-DIVISION No. 3.

Roll No.	NAME.	LOT.	Concession or Street.	Other Description.	P.O.
J 473	Innis, Hugh	E hf 22	1	M F and O	3
1117	Johnson, Robt	80, 81, pt 57, 58	2 Mt Bgs	M F and O	1
1116	Johnson, Hiram	55, 56, 82, 83	2 Mt Bgs	M F and O	1
J 501	Kilbourn, Ben	E hf S hf 14	2	M F and T	1
1119	Kellestine, Andrew	1 to 6 & 75, 63 to 73	2 Mt Bgs	M F and O	1
1120	Kellog, Andrew	blk E, 12	2 Mt Bgs	M F and O	1
1121	Kinch, Peter	Blk B, 10	2 Mt Bgs	M F and O	1
1122	Kennedy, Angus	Blk H, 17	2 Mt Bgs	M F and O	1
549	Lipsit, Jasper	N cor N hf 16	2	M F and O	1
J 534	Lowthian, George	S hf 14	1	M F and O	6
1123	Lee, Elijah	181, 182, 183, 184	2 Mt Bgs	M F and O	1
J 1124	London, Franklin F	206 to 212 & other prem	2 Mt Bgs	M F and O	1
1149	Luce, Seth	Blk G, 18, blk H, 16	2 Mt Bgs	M F and O	1
1129	Lipsit, Bannon	Blk B 1, pt 2	2 Mt Bgs	M F and O	1
530	Lewis, Eugene	N cor 24	2	M F and O	1
1127	Lindsay, Henry G	Blk B 4, 5	2 Mt Bgs	M F and O	1
J 557	Monteith, Wm	W hf 23	2	M F and O	1
J 1083	Malcolm, M	Blk K, 1 and 2	2 Mt Bgs	M F and T	1
650	McCallum, Chas	N hf 13	2	M F and O	1
651	McCallum, Justus	N hf 13	2	M F and F S	1
J 672	McMullen, Geo	W hf N hf 20	1	M F and O	1
J 698	Nagle, Henry	N hf 14	2	M F and O	1
J 704	Nagle, William	W $\frac{1}{2}$ S $\frac{1}{2}$ 15 & other prem	1	M F and O	1

Roll No.	NAME.	LOT.	Concession or Street.	Other Description.	P.O.
	725 Owens, Thos	N W ¼ N hf 16	2	M F and O	1
J	719 Obrine, John	E hf S hf 15	2	M F and O	1
	720 Ollett, Wm	N pt S hf 21	2	M F and O	1
J	721 Ollett, Edward	S hf 20	2	M F and O	1
J	1080 Pierce, Thomas	Blk K, 1, 2	2 Mt Bgs	M F and O	1
	1143 Porter, William	132 to 146 & other prem.	2 Mt Bgs	M F and T	1
	1142 Porter, Jas	119, 120, 121	2 Mt Bgs	M F and O	1
	1164 Root, John	163, 164	2 Mt Bgs	M F and T	1
	1148 Root, Richard	Blk C, pt 8, 9, 10	2	M F and T	1
J	817 Ringrose, Chas	W ½ S hf 14	2	M F and T	1
J	818 Ramsay, Peter	W hf N hf 17	1	M F and O	1
	820 Robinson, Thos	S hf 13	1	M F and O	6
J	821 Robinson, Jos	S hf 13	1	M F and T	6
	1151 Robertson, Wm C	Blk L, 15	2 Mt Bgs	M F and O	1
J	1082 Robinson, Jos	Blk K, 1, 2	2 Mt Bgs	M F and T	1
J	815 Runnalls, Rich	N hf 14	1	M F and O	1
	1150 Runnalls, Daniel	Blk G 18, blk H 16	2 Mt Bgs	M F and T	1
	901 Stover, Jacob	W hf S hf 13	2	M F and O	1
	902 Smith, Francis	E hf S hf 13	2	M F and O	1
	1232 Steer, Wm	N hf 18	2	M F and FS	1
J	903 Simpson, George	N hf 16	1	M F and O	1
	904 Simpson, Wilbert	N hf 16	1	M F and FS	1
J	1152 Small, David	E pt N hf 18	2	M F and O	1
J	1153 Small, David M	N hf N hf 19	2	M F and T	1
J	1112 Sutherland, Jas F	Blk pt 1 and other prem.	2 Mt Bgs	M F and O	1
	1102 Sileox, John W	171, 107	2 Mt Bgs	M F and O	1
J	927 Tilden, George B	S pt 23	2	M F and O	1
J	930 Tilden, Stephen E	N pt 23	2	M F and T	1

POLLING SUB-DIVISION No. 3.

Roll No.	NAME.	LOT.	Concession or Street.	Other Description.	P.O.
J 928	Thomas, A W	S pt N hf 21	2	M F and O	1
1154	Thomas, Wm	131 to 145	2 Mt Bgs	M F and O	1
J 931	Tilden, Charles M	N pt 23	2	M F and T	1
951	Tull, Robert	S hf 16, & other prem	1	M F and O	1
952	Tull, Robert M	S hf 16, & other prem	1	M F and F S	1
J 940	Tull, Samuel R	N hf 15	1	M F and O	1
954	Tupholme, Robert	pt S $\frac{1}{2}$ 17 and 18	1	M F and O	1
J 956	Toles, Francis B	W hf S hf 17	1	M F and T	1
J 1155	Taggart, Thomas	167, and other prem	2 Mt Bgs	M F and O	1
1156	Thomas, Stephen	168	2 Mt Bgs	M F and O	1
J 816	Thomas, John	W hf S hf 14	2	M F and O	1
J 983	Thomas, Albert E	N hf N hf 20	2	M F and O	1
953	Tull, Thomas H	S hf 16 and other prem	1	M F and F S	1
J 984	Vennor, Wm	S hf N hf 20	2	M F and T	1
1029	Welch, Philemon	S cor S hf 16	4	M F and O	1
1015	Waters, Wm H jr	E hf N hf 21	1	M F and F S	1
J 995	Waters, Francis	pt N hf 22 & other prem	2	M F and O	1
J 997	Weekes, John	23 and 24	1	M F and O	1
J 998	Weekes, James	23 and 24	1	M F and O	1
1004	Walker, George	E hf S hf 19	2	M F and O	1
1005	Walker, Alfred	E hf S hf 19	2	M F and F S	1
J 1013	Waters, John W	E hf N hf 21	1	M F and O	1
1014	Waters, Cornelius	E hf N hf 21	1	M F and O	1
J 1016	Waters, Arthur	W hf 22	1	M F and O	3
1167	Wells, M C	108, 109 & other prem	2 Mt Bgs	M F and T	1
1165	Wilkinson, James	179, 180	2 Mt Bgs	M F and O	1
J 1168	Wootten, Richard	blk F, 18 & other prem	2 Mt Bgs	M F and O	1
1169	West, Thomas	blk F, pt 1, 2, 3	2 Mt Bgs	M F and O	1
1163	Whitehead, Zenes	blk E, 14, 15	2 Mt Bgs	M F and T	1

PART II.—Persons Entitled to Vote at Municipal Elections ONLY.

Roll No.	NAME.	LOT.	Concession or Street.	Other Description.	P.O.
1078	Andrews, Ann	blk B, 15	2 Mt Bgs	O	1
1100	Arnold, John	blk E, 13, 16, B K 17	2 Mt Bgs	O	14
1146	Bond, John	blk C, pt 8, 9, 10	2 Mt Bgs	O	2
1166	Bond, Jane	108, 109 & other prem	2 Mt Bgs	O	1
17	Cullen, Michael	S pt E pt 16	2	O	17
252	Corcoran, Eliza	pt N hf 21, 22	1	O	1
25	Edwards, Homer	C pt E hf 22	2	O	31
250	Finch, Wm	S W pt S hf 22	1	O	18
1105	Graham, George	blk F, 1, 2, 3	2 Mt Bgs	O	2
1075	Johnston, Alex	blk I, 16	2 Mt Bgs	O	2
1125	Lloyd, Fergus	pt N hf 18	2	O	14
1132	Mills, Charles J.	blk I, 1	2 Mt Bgs	O	14
1147	McKellar, Elizabeth	blk C, pt 8, 9, 10	2 Mt Bgs	T	1
710	Neville, Pamela	S hf 17	2	O	1
1135	Nagle, Rebecca	155, 156, 157	2 Mt Bgs	O	1
1140	Nicholson, Henry	pt N ½ 17 & other prem	2	O	2
1145	Rowles, Wm	175, 176, 177	2 Mt Bgs	O	20
500	Stratton, Alf H.	E hf S hf 14	2	O	1
905	Steer, John	E hf S hf 14	1	O	3

POLLING SUB-DIVISION No. 3.

Roll No.	NAME.	LOT.	Concession or Street.	Other Description.	P.O.
1158	Tuck, Eliza	blk 1, 17, 18	2 Mt Bgs.	O	1
929	Tilden, Chas N D.	N pt 22	2	O	2
1017	Webb, Mrs.	pt S hf 20.	1	O	1

PART III.—Persons Entitled to Vote at Elections to the Legislative Assembly ONLY.

115	Bancroft Wm.	pt W hf N hf 20	2	M F	1
1107	George, Edward N	G T R agent	2 Mt Bgs.	M F	1
	<i>W Hunt's Co</i>	<i>Blk K pt 1</i>	<i>2 Mt Bgs</i>	<i>M F</i>	<i>1</i>
	<i>W Hunt's Co</i>	<i>Blk K pt 1</i>	<i>2 Mt Bgs</i>	<i>M F</i>	<i>1</i>
1118	Johnson Sam F.	S W pt 18	2 Mt Bgs.	M F	1
	<i>W Myers</i>	<i>Blk E 18</i>	<i>2 Mt Bgs.</i>	<i>M F</i>	<i>1</i>
1141	Oliver George	Blk E 18	2 Mt Bgs.	M F	1
1144	Parsons, Henry	Blk K pt 1	2	M F	1
1157	Thompson, Lorenzo	Blk I, 1	2 Mt Bgs.	M F	1
1161	Vrooman, James	Blk B, 6	2 Mt Bgs.	M F	1

Polling Sub-Division No. 4,

Comprising all that portion of the Township lying in the 2nd, 3rd, 4th, 5th, and 6th Concessions West of the Side Road between Lots 12 and 13.

PART 1. Persons Entitled to Vote at BOTH Municipal Elections and Elections to the Legislative Assembly.

Roll No.	NAME.	LOT.	Concession or Street.	Other Description.	P.O.
J 5	Ausley, John	W hf N hf 3	5	M F and O	7
J 6	Addison, Wm	E hf S hf 9	6	M F and O	2
J 14	Augerman, John	S hf 6	3	M F and O	12
J 15	Augerman, Chas	S hf 6	3	M F and F S	12
J 64	Blair, Wm	N hf 9	6	M F and T	2
J 65	Blair, Geo D	N hf 9	6	M F and T	2
J 67	Bairns, Thos	N hf 4	6	M F and O	7
J 70	Ballantine, Geo	N hf 10	5	M F and O	2
J 76	Brown, Edmund	N hf 7, W hf S hf	5, 3 and 4	M F & T & O	12
J 86	Bateman, Elisha	S hf 9	3	M F and O	1
J 87	Bowley, Henry	W hf S hf 10, S hf 9	3	M F & O & T	1
J 88	Branton, Alfred	E hf S hf 4	3	M F and O	12
J 89	Bateman, Chas E	S hf 4	2	M F and O	12
J 90	Bateman, Samuel	W hf S hf 5	2	M F and O	12
J 91	Beattie, James	S hf 6, pt N hf 6	2	M F and O	12
J 92	Beattie, Patten	S hf 6, pt N hf 6	2	M F and F S	12
J 93	Beattie, Jas J	S hf 6, pt N hf 6	2	M F and F S	12
J 193	Connor, James	W hf N hf 6	5	M F and O	7
J 196	Campbell, Dugald	E hf N hf 12	5	M F and O	2
J 209	Coleman, Jas	E cor N hf 12	2	M F and T	1
J 215	Cushman, James	E pt S hf 3	3	M F and O	12

POLLING SUB-DIVISION No. 4.

Roll No.	NAME.	LOT.	Concession or Street.	Other Description.	P.O.
J 217	Cavan, Charles	S hf 1	3	M F and T	12
J 223	Carruthers, John	E hf S hf 9	2	M F and O	12
J 205	Cobban, Daniel	S hf 3	4	M F and O	7
J 204	Cobban, James	N hf 3	4	M F and O	7
J 222	Cawthrope, Ernest	S hf 2	2	M F and O	12
J 207	Cornell, Simon	N hf 6	3	M F and T	12
360	Ferguson, Sammel	E pt N hf 11	6	M F and O	2
J 361	Ferguson, John	E pt N hf 11	6	M F and T	2
331	Fisher, Clement	S hf 8	6	M F and O	7
J 332	Fisher, John	W hf N hf 8	6	M F and FS	7
333	Fisher, Wellington	S hf 8	6	M F and FS	7
334	Fisher, William	S hf 8	6	M F and FS	7
J 330	Fisher, Benjamin	N W pt 8	5	M F and O	7
J 337	Farrow, John	W hf 9 & other prem.	5	M F and T	2
J 336	Farrow, Wm	W hf 9 and other prem.	5	M F and T	2
327	Fox, George	N E cor N hf 12	6	M F and T	2
342	Francis, Robt H	W hf S hf 11	3	M F and O	1
J 381	Grigg, John P	N hf 11	4	M F and O	1
389	Grigg, Wm	W $\frac{1}{2}$ N $\frac{1}{2}$ 12 & other pre.	2	M F and O	1
J 390	Grigg, Frank	W $\frac{1}{2}$ N $\frac{1}{2}$ 12 & cther pre.	2	M F and T	1
J 392	Grigg, Wm H	E hf S hf 11	3	M F and O	1
J 391	Grigg, Arthur	W $\frac{1}{2}$ N hf 12&other pre.	2	M F and T	1
443	Hammit, Jas	W hf S hf 3	3	M F and O	12
419	Howe, Hamilton	S hf 1	6	M F and O	7
J 420	Howe, Thomas	S hf 1	6	M F and O	7
J 421	Hixon, Levi J	S hf 4, E hf S hf 3	6	M F and O	7
422	Hixon, Francis G	S hf 4, E hf S hf 3	6	M F and FS	7

Roll No.
 J 424 F
 J 425 F
 J 428 F
 J 429 F
 J 430 F
 J 432
 J 436
 J 437
 431
 438
 J 444
 J 433
 425
 123
 44/
 J 47
 J 47
 J 47
 4

POLLING SUB-DIVISION No. 4.

P.O.	Roll No.	NAME.	LOT.	Concession or Street.	Other Description.	P.O.
12	J 424	Howe, George	N hf 5	5	M F and O	7
12	J 425	Hutton, Alex B	W hf S hf 9, E $\frac{1}{2}$ N $\frac{1}{2}$ 8	6	M F and O	2
7	J 428	Hutton, James L	E hf S hf 9, pt 10	5	M F and O	2
7	J 429	Hunter, George	E hf N hf 9	4	M F and O	2
12	J 430	Hardy, Henry	S hf 7	5	M F and O	2
12	J 432	Hixon, John	E hf S hf 5	5	M F and O	7
	J 436	Harrison, Willough'y	S hf 6	4	M F and O	7
	J 437	Hutcheson, John	pt W hf N hf 8, pt 1	3 and 4	M F and O	1
2	431	Hutcheson, James	E hf N hf 6	4	M F and O	7
2	438	Hutcheson, Geo	E hf N hf 1	4	M F and O	7
7	J 444	Hoover, Joseph	W pt S hf 10	2	M F and O	7
7	J 433	Harrison, Robt	E hf S hf 5	4	M F and O	12
7	423	Hixon, Wilbar H	S hf 4, E hf S hf 3	6	M F and F S	7
7	1231	Harrison, Wesley A	S hf 6	4	M F and F S	7
7		<i>Hixon Frank S, 2 4</i>		10	<i>M F and S 7</i>	
2	J 474	Inches, George	N hf 5	3	M F and O	12
2	J 475	Inches, John	W hf S hf 10	4	M F and O	1
1	J 476	Inches, Thomas	E hf S hf 10, pt 11	4	M F and O	1
	477	Inches, James	E hf S hf 10, pt 11	4	M F and F S	1
1	J 496	Kellestine, Warren	W hf N hf 2	4	M F and O	12
1	J 497	Kellestine, John	W hf N hf 2	3	M F and T	12
1	498	Kellestine, Wm	W hf N hf 2	3	M F and F S	12
1	499	Kellestine, Geo sr	11, 12, 13, 15, Mid	2	M F and O	12
1	J 495	Kettlewell, John F	N hf 1	6	M F and T	13
12	J 526	Langford, Jas A	een pt S hf 10	5	M F and O	1
7	J 528	Lee, John	N hf 5	4	M F and O	7
7	J 630	MeArthur, Donald	N hf 10	6	M F and O	2
7	J 638	McDougall, Duncan	S hf 10, S hf 11	6	M F and O	2

POLLING SUB-DIVISION No. 4.

Roll No.	NAME.	LOT.	Concession or Street.	Other Description.	P.O
	639 McDougall, Arch	S hf 10, S hf 11	6	M F and F S	2
	644 McDougall, Arch	W hf S hf 12	6	M F and F S	2
J	642 McLean, Charles	N hf 11	5	M F and T	2
J	640 McLean, Hector	S hf 12	5	M F and O	2
J	645 McDougall, Peter	E hf S hf 12	6	M F and O	2
J	647 McPhail, Arch	N hf 10	4	M F and O	2
J	649 McKellar, Duncan	W hf S hf 2	5	M F and T	12
	652 McGregor, James sr	S hf 7 and other prem	3	M F and O	12
	655 McGregor, John	S hf 7 and other prem	3	M F and F S	12
	654 McGregor, James jr	S hf 7 and other prem	3	M F and F S	12
	653 McGregor, Thomas	S hf 7 and other prem	3	M F and F S	12
J	658 McCracken, James	E½ S hf 5 & other prem	2	M F and O	12
	660 McMullen, Thomas	N½ 7 and other prem	3	M F and O	1
J	661 McMullen, John	S	2	M F and T	1
J	659 McCracken, Ambrose	W hf S hf 9	2	M F and O	12
J	699 Nichols, Daniel	6 and 7 Middleton	2	M F and O	12
	716 Oaks, Samuel sr	pt N hf 12	6	M F and O	2
J	717 Oaks, Samuel jr	pt N hf 12	6	M F and T	2
J	757 Pettit, Francis	W hf N hf 3	6	M F and O	7
J	727 Patterson, Thomas	N W cor N hf 1	5	M F and O	12
J	761 Pettit, Levi	pt N hf 2 & 3, S hf 4	6 and 7	M F & O T	7
	768 Pierce, Robert	W cor S½ 8 & other pre	5	M F and O	7
	769 Pierce, Francis	W cor S½ 8 & other pre	5	M F and F S	7
	770 Pierce, Thomas	W cor S¼ 8 & other pre	5	M F and F S	7
J	763 Pierce, Uriah	N hf S hf 4	5	M F and O	7
J	764 Pettit, Martin	E hf S hf 3	5	M F and O	7
J	762 Pierce, Robert jr	pt N hf 1	5	M F and O	7

POLLING SUB-DIVISION No. 4.

P.O.	Roll No.	NAME.	LOT.	Concession or Street.	Other Description.	P.O.
S. 2	J 726	Phillips, James	pt 2	6	M F and O	7
S. 2	J 728	Paisley, Wm	W $\frac{1}{2}$ S $\frac{1}{2}$ 3, S $\frac{1}{2}$ S $\frac{1}{2}$ 5	6	M F and O	7
S. 2	J 730	Paisley, Samuel	E hf N hf 3	5	M F and T	7
S. 2	J 731	Pullen, Noah	E hf N hf 6	5	M F and O	7
S. 2	J 767	Pullen, Joseph	S hf 7, pt 6	6	M F and O	7
S. 2	J 766	Pullen, John	N hf S hf 5	6	M F and O	7
S. 12		778 Pratt, John	17 and 18 Middleton	2	M F and O	12
S. 12		775 Phillips, James	S pt 1	2	M F and O	12
S. 12	J 776	Phillips, Walter	S pt 1	2	M F and O	12
S. 12	J 777	Phillips, Albert	S pt 1	2	M F and O	12
S. 12		<i>Wm H. J. 10/1/27</i>				
S. 12		806 Ramey, James	E pt N hf 2	5	M F and O	
S. 1		807 Ramey, Thomas	E p ^r N hf 2	5	M F and F S	7
S. 1	J 805	Ramey, Wm	W pt N hf 2	5	M F and O	7
S. 12	J 834	Richardson, John	E hf S hf 11	5	M F and O	2
		793 Rice, John	E hf S hf 2, pt 3	5	M F and O	12
		792 Rice, James	E pt N hf 3	5	M F and O	7
S. 12	J 791	Ramsay, George	N hf 10	3	M F and O	1
		812 Robinson, John	S hf 5	3	M F and O	12
S. 2	J 814	Rae, Alexander	N pt 3	2	M F and O	12
S. 2	J 813	Robinson, Geo W	S hf 5	3	M F and T	12
S. 7	J 855	Snelgrove, David	E pt N hf 11	6	M F and T	2
S. 12	J 860	Stephenson, Alfred	N hf 4, N hf 7	5 and 6	M F and O	7
S. 7	J 861	Stephenson, Robert	N hf 4, N hf 7	5 and 6	M F and O	7
S. 7	J 867	Sutherland, George	N pt N hf 8	4	M F and O	6
S. 7	J 869	Sutherland, John	E hf N hf 7, pt 1	4	M F and O	2
S. 7	J 871	Stuart, John	W hf N hf 6	4	M F and O	7
S. 7	J 873	Sutherland, Isaae	W hf S hf 7	4	M F and O	1
S. 7	J 874	Sutherland, Thomas	E hf S hf 7	4	M F and O	1
S. 7	J 875	Sutherland, Henry	W hf S hf 8	4	M F and O	1

POLLING SUB-DIVISION No. 4.

Roll No.	NAME.	LOT.	Concession or Street.	Other Description.	P.O.
J 876	Sutherland, Wm	E hf S hf 8	4	M F and O	1
877	Sutherland, Alex sr.	S hf 9, pt 8	4	M F and O	1
J 878	Sutherland, Alex jr.	S hf 9, p. 8	4	M F and O	1
J 879	Sutherland, James I	N hf 9 and other prem.	3	M F and O	1
J 870	Sutherland, Charles	W $\frac{1}{2}$ N $\frac{1}{2}$ 7 & other prem.	4 and 3	M F and O	1
J 925	Scott, William	N hf 12	3	M F and O	1
926	Scott, Robert	N hf 12	3	M F and F S	1
889	Steer, Stephen	S hf 12	3	M F and O	1
890	Steer, Walter	S hf 12	3	M F and F S	1
J 891	Small, Wm	E hf S hf 10	3	M F and O	1
J 893	Sleath, Wm	E hf N hf 2	3	M F and T	12
J 894	Stuart, Stephen	W hf S hf 2	3	M F and O	12
J 895	Stockings, Chris	N pt N hf 2, pt 2	2 and 3	M F and O	12
898	Seabarn, John	S hf 3	2	M F and O	12
J 899	Simmons, Moses	S hf 7	2	M F and O	12
J 872	Simmons, George	E hf S hf 4	4	M F and O	12
J 880	Scott, Alexander	E hf S hf 11	4	M F and O	1
J 968	Toal, Wm	N hf 7	5	M F and O	2
J 933	Trott, Wm	N hf 9	2	M F and O	1
937	Thompson, John	S pt 11	2	M F and O	1
939	Thompson, Francis	pt S hf 11 and 12	2	M F and O	1
	<i>John Toal 11/11</i>			<i>7-4-85</i>	
1002	Westbrook, Leonard	pt blk I, Middletn	2	M F and O	12
J1049	Wakem, John	E hf N hf 3	6	M F and O	7
J1052	Wittaker, Joseph	W hf S hf 6	6	M F and O	7
J1053	Watson, Walter W.	E hf N hf 9	5	M F and O	2
J1057	Welch, Lyman	pt S hf 10, pt S hf 11	5	M F and O	2
J1059	Wightman, James	S hf 6	5	M F and T	7
1060	Wilcock, Thomas	N hf 11	3	M F and O	1
1000	White, James	N pt N hf 6	2	M F and O	12

Roll No.	NAME.	LOT.	Concession or Street.	Other Description.	P.O.
J1001	White, Ralph	N pt N hf 6	2	M F and T	12
J1051	Wakem, Thomas	N hf 6	6	M F and O	7
218	Windall, James	W quar S hf 1	3	M F and O	12

PART II.—Persons Entitled to Vote at Municipal Elections ONLY.

63	Blair, Elizabeth	N hf 9, pt 10	6 and 7	0	2
82	Bolton, Barbara	W hf S hf 4	3	0	12
216	Berdan, John	E pt S hf 1	3	0	2
208	Campbell, Wm J	Ecor N hf 12	2	0	2
194	Campbell, Janett	W hf N hf 12	5	0	2
195	Campbell, Arch	W hf N hf 12	5	T	2
293	Dillan, John	N hf 1	3	0	12
294	Dillan, Thomas	N hf 1	3	0	12
554	Elson, John	E pt N hf 11	6	0	25
335	Farrow, Robt	W hf 9 & other pre	5	0	2
1058	Hixon, Joseph	S hf 6	5	0	7
494	Howe, Joseph	N hf 1	6	0	13
231	Lucas, Mrs	N cor N hf 12	2	0	1
558	Moore, Martha	1 to 9, H st Midd	2	0	12
641	McLean, Nancy	N hf 11	5	0	2
643	McDougall, Jane	W hf S hf 12	6	0	2
634	McKee, Jas	S hf 1 & other prem	5	0	12
635	McKee, John D.	S hf 1 & other prem	5	0	12
206	McEwen, Robt	N hf 6	3	0	18

POLLING SUB-DIVISION No. 4.

Roll No.	NAME.	LOT.	Concession or Street.	Other Description.	P.O.
729	Nicolls, Wm	E hf N hf 3	5	O	2
765	Patrick, Jane	E pt N hf 8	3	O	12
179	Raymond, John	N hf 12	4	O	2
862	Smale, Henry	W hf S hf 6	6	O	7
892	Thomas, David	W hf N hf 2	3	O	14
1022	Weld, Agnes	W pt N hf 1	2	O	3
PART III.—Persons Entitled to Vote at Elections to the Legislative Assembly ONLY.					
75	Bass, Albert	E hf S hf 4	4	M F	1
77	Bolton, Hagh	S hf 12	4	M F	1
192	Cranston, Wm	N hf 6	6	M F	2
219	Cushman, Wm	16 Midd	2	M F	12
393	Gallagher, Patrick	N hf 1	3	M F	12
382	Glennie, George	pt W hf S hf 3	5	M F	7
383	Graves, Hanson	W hf S hf 11	4	M F	1
435	Hare, Justin	S hf 6	4	M F	12
434	Hate, William	W hf S hf 5	4	M F	12
	<i>W Harrison A H</i>	<i>pt</i>	<i>2</i>	<i>M F</i>	<i>12</i>
527	Lazonby, David	S hf 7	5	M F	1
	<i>Reynolds B W</i>	<i>pt</i>	<i>1</i>	<i>f</i>	<i>1</i>
934	Taylor, John	S hf 5	2	M F	2
	White, Jas	1 Midd	2	M F	12

Compris

PART

Roll No.

J 1

J 131

J 35

J 3

J 3

J 4

J

J

J

J

J

J

J

J

J

J

Polling Sub-Division No. 5,

Comprising all that portion of the Township lying in the 5th, 7th, 8th, 9th, and 10th Concessions East of the Side Road between Lots 12 and 13.

PART 1. Persons Entitled to Vote at BOTH Municipal Elections and Elections to the Legislative Assembly.

Roll No.	NAME.	LOT.	Concession or Street.	Other Description.	P.O.
J 1	Anderson, John	pt N hf 14	9	M F and O	2
J 131	Buttery, John	S W cor N hf 13	9	M F and O	2
J 35	Bond, Frederick	N pt N hf 17	10	M F and O	2
J 34	Bond, Samuel	N hf 16	9	M F and O	2
J 36	Brooks, Hugh	S hf 21, S hf 22	10	M F and O	9
J 45	Ball, Thos sr	W pt S hf 20	9	M F and O	2
J 46	Ball, Robt T	W pt S hf 20	9	M F and F S	2
J 49	Bell, Richard	pt S hf 20, S hf 20	7 and 8	M F and O	2
J 50	Bell, Robt W	pt S hf 20, S hf 20	7 and 8	M F and F S	2
J 51	Bell, Jas S	pt S hf 20, S hf 20	7 and 8	M F and F S	2
J 52	Brown, Wm	E $\frac{1}{2}$ N $\frac{1}{2}$ 13, & other pre.	7 and 8	M F and O	2
J 53	Brown, Geo W	E $\frac{1}{2}$ N $\frac{1}{2}$ 13, & other pre.	7 and 8	M F and F S	2
J 54	Brown, Henry S	W $\frac{1}{2}$ N $\frac{1}{2}$ 13 & other pre.	7	M F and O	2
J 47	Brown, Henry	W $\frac{1}{2}$ S $\frac{1}{2}$ 18 & other pre.	6	M F and O	2
J 48	Brown, Jas H	W $\frac{1}{2}$ S $\frac{1}{2}$ 18 & other pre.	6	M F and F S	2
J 58	Branton, Thos	E $\frac{1}{2}$ N $\frac{1}{2}$ 14, pt S hf 20	6 & 7	MF and O & T	32
J 144	Campbell, Malcolm	pt 17, N hf 16	9 & 10	M F and O	2
J 145	Campbell, Chas	S hf 16	10	M F and O	2
J 146	Campbell, Mal M	W hf 23	10	M F and O	9

Roll No.	NAME.	LOT.	Concession or Street.	Other Description.	P.O.
J 147	Campbell, Arch J.	W hf 23	10	M F and T	9
J 148	Campbell, Peter T.	W hf 23	10	M F and T	9
J 149	Campbell, Donald	19	10	M F and O	2
150	Campbell, John K.	19	10	M F and F S.	2
151	Campbell, Alex K.	19	10	M F and F S.	2
J 152	Campbell, Alex C.	E hf 18	10	M F and O	2
153	Campbell, John C.	S E pt 18	10	M F and F S.	2
142	Collins, Thos	S W cor 13 & other pre	8 and 9	M F and O	2
J 143	Collins, Wm A	pt S hf 13 and 14	9	M F and T	2
J 170	Crawford, Arch	S hf 19	9	M F and O	2
J 178	Collins, George	N hf 14 & other prem	7	M F and O	2
J 174	Campbell, Arch	21 and other prem	8 and 9	M F and O	2
J 175	Crawford, Duncan	S hf 17	8	M F and O	2
J 191	Carson, Samuel	S hf 19	6	M F and O	1
154	Campbell, Oliver W	E hf 18	10	M F and F S.	2
184	Campbell, Malcolm	S hf 22, pt 23	6	M F and O	10
J 185	Campbell, Arch R.	S hf 22, pt 23	6	M F and T	10
J 177	Campbell, Mal J	pt S hf 23	6	M F and O	10
J 188	Campbell, Arch M.	N hf 24	6	M F and O	32
J 189	Campbell, Alex	W hf N hf 21	6	M F and O	32
J 198	Courtis, Robt B.	pt S hf 14	6	M F and O	2
J 197	Case, Peter	E pt 13	6	M F and O	2
J 284	Degraw, John G	pt S hf 16	9	M F and O	2
J 285	Degraw, John	W pt N hf 16	8	M F and O	2
J 287	Dolphin, Neil	pt N hf S hf 16	9	M F and T	2
288	Dolphin, Alex	S E cor S hf 20	9	M F and O	2
J 277	Dolphin, Jas	N hf 23	8	M F and T	2
J 311	Elworthy, Richard	N hf 23, N hf 24	9	M F and O	9
J 308	Erskine, Thomas	N hf N hf 16	6	M F and O	2

POLLING SUB-DIVISION No. 5.

Roll No.	NAME.	LOT.	Concession or Street.	Other Description.	P.O.
J 325	Frank, Lucian	pt E hf S hf 20	9	M F and T	2
J 328	Fletcher, Neil	S hf 21	6	M F and O	10
J 364	Graham, Donald G	E hf 23, S hf 24	10	M F and O	9
J 375	Graham, Hugh	E hf S hf 15	8	M F and T	2
J 403	Getty, Uriah	W hf N hf 15, pt 16	6	M F and O	2
J 404	Getty, John F	W hf N hf 15, pt 16	6	M F and T	2
J 405	Getty, Edwin	W hf N hf 15, pt 16	6	M F and T	2
J 415	Hill, John L	E pt N $\frac{1}{2}$ 16 & other pre	8	M F and O	2
J 413	Hansford, John W	S hf 22	8	M F and T	2
J 414	Humphrey, Thomas	N hf S hf 17	7	M F and O	2
J 416	Hill, Jas A	N hf 15 and other pre	7	M F and O	2
J 417	Henderson, George	N hf 19	6	M F and O	2
J 418	Henderson, John	N hf 19	6	M F and O	2
427	Howe, Wm	S cor 14 & other prem	6	M F and O	1
472	Harrison, David	E cor N hf 13	6	M F and O	2
J 486	James, David	N pt 13	9	M F and O	2
J 489	Jones, Wm	S hf S hf 17	7	M F and O	1
487	James, John S	N pt 13	9	M F and F S	2
J 546	Leitch, Dugald sr	S hf 13 & other prem	7	M F and O	2
J 547	Leitch, Dugald jr	S hf 13 & other prem	7	M F and T	2
567	Mitchell, John C	W hf S hf 15	7	M F and O	2
J 568	Mitchell, Jas M	W hf N hf 14	6	M F and O	2
573	McLean, Neil	N hf 21	9	M F and O	2
J 574	McLean, Hugh	N hf 21	9	M F and F S	2

POLLING SUB-DIVISION No. 5.

Roll No.	NAME.	LOT.	Concession or Street.	Other Description.	P.O.
J 575	McLellan, Angus	S hf 20 and other	pre 10	M F and O	2
J 576	McLellan, Donald	S hf 20 and other	pre 10	M F and O	2
J 589	McLean, Allan jr	N hf 14	8	M F and O	2
J 590	McLean, Arch	N hf 14	8	M F and O	2
591	McLean, Charles	N hf 14	8	M F and O	2
J 592	McDonald, Charles	W pt S hf 15	9	M F and O	2
J 595	McLean, Charles	E pt S hf 18	9	M F and O	2
594	McLellan, Arch	pt W hf N hf 18	8	M F and O	2
J 596	McLean, Allan C	E hf 18	9	M F and O	2
597	McLellan, Nevin	N hf 19	8	M F and O	2
J 598	McKellar, Duncan	S hf 23, S hf 21	9	M F and O	9
J 599	McDougall, Alex C	24	8	M F and O	11
J 602	McGugan, Godfrey	N hf 23 and 21	7	M F and O	11
J 603	McGugan, Angus	22, N hf 18	7	M F and O	2
J 604	McGugan, Malcolm	22, N hf 18	7	M F and O	2
J 605	McGugan, John	22, N hf 18	7	M F and O	2
J 606	McGugan, Duncan	22, N hf 18	7	M F and O	2
J 607	McNeil, John	S hf 19, N hf 20	8 and 9	M F and O	2
608	McNeil, Donald T	N hf 19 and other	pre 7	M F and O	2
J 609	McNeil, Angus C	N hf 19 and other	pre 7	M F and O	2
J 610	McNeil, John C	N hf 19 and other	pre 7	M F and O	2
J 611	McNeil, Duncan C	N hf 19 and other	pre 7	M F and O	2
J 612	McNeil, Malcolm C	N hf 19 and other	pre 7	M F and O	2
J 613	McNeil, Arch C	N hf 19 and other	pre 7	M F and O	2
632	McMillan, James	W hf N hf 16	7	M F and O	2
633	McMillan, David	W hf N hf 16	7	M F and F S	2
J 600	McLean, Duncan L	N hf 24	7	M F and O	11
623	McGugan, Malcolm	S hf 23	7	M F and O	2
J 631	McPhail, Dngald	S hf 18	7	M F and O	2
J 625	McKellar, Jas	N hf 23, N hf 22	6	M F and O	32
626	McKellar, Duncan	N hf 23	6	M F and F S	32
628	McNell, Alex	S hf 19	7	M F and O	2
J 629	McIntyre, Arch	N cor N hf 18	6	M F and O	2

Roll No.

1044 McVic

1045 McVic

578 McNe

J 695 Nor

J 691 No

J 696 No

J 57 F

802

803

J 804

80

J 75

J

POLLING SUB-DIVISION No. 5.

Roll No.	NAME.	LOT.	Concession or Street.	Other Description.	P.O.
1044	McVicar, John	N hf 20	6	M F and O	2
1045	McVicar, Arch	N hf 20	6	M F and O	2
578	McNeil, Duncan	N E cor 14	9	M F and T	2
J 695	Northcott, Augustus	S hf 17 and other pre	6	M F and O	1
J 691	Northcott, Robt T	S hf N hf 17	6	M F and O	1
J 696	Northcott, Ephraim	S hf 17	6	M F and O	1
J 57	Reily, Peter	E pt S hf 20	7	M F and O	32
802	Rose, Peter sr	S hf 16	7	M F and O	2
803	Rose, Peter jr	S hf 16	7	M F and FS	2
J 804	Rose, Alex	N hf 20	7	M F and O	2
801	Root, Jeduthan	pt W hf N hf 18	6	M F and O	2
J 794	Robins, Edwin	N hf 21	10	M F and O	2
J 846	Stanley, Jonah	E hf N hf 22	8	M F and O	2
848	Sinclair, Dunean	S hf 23	8	M F and O	11
J 849	Sinclair, Neil	S hf 23	8	M F and T	11
J 847	Sinclair, Arch	S hf 24	7	M F and O	11
J 863	Sabine, John	E hf S hf 15	6	M F and O	2
J 864	Sabine, Loomis	E hf S hf 15	6	M F and O	2
J 958	Thompson, David	cen pt 17	10	M F and O	2
J 961	Thompson, Robert	E pt 17, pt 18	9	M F and O	2
962	Thompson, John W	E pt 17, pt 18	9	M F and FS	2
J 959	Thompson, Wm A	N hf 20	10	M F and O	2
J 964	Turner, Donald	W hf N hf 15	8	M F and O	2
J 966	Turner, Hugh	S $\frac{1}{2}$ 17, & other prem	9	M F and O	2
J 965	Turner, Peter	S $\frac{1}{2}$ 17, & other prem	9	M F and O	2

Roll No.	NAME.	LOT.	Concession or Street.	Other Description.	P.O
J1033	Wark, Thomas	S hf 24	9	M F and O	9
J1032	Wood, Thomas	N hf 24	10	M F and T	9
J1046	Wilton, Daniel W	N hf 20	6	M F and T	2
J1043	Waters, Asa	N hf N hf 17	6	M F and O	2
J1054	Wilton, Amos P	een pt 13	6	M F and O	2

PART II.—Persons Entitled to Vote at Municipal Elections ONLY.

40	Barry, John	S pt N hf 15	10	O	2
134	Collins, Ellen	N hf S hf 13, 14	9	O	2
133	Campbell, James	N pt N hf 15	9	O	2
135	Collins, Wm G	N hf S hf 13, 14	9	T	2
136	Collins, Thos S	N hf S hf 13, 14	9	T	2
286	Degraw, Cornelius	pt 15 and 16	9	O	2
1031	Ellworthy, John P	N hf 24	10	O	9
374	Graham, Annie	W hf S hf 15	8	O	2
276	McLeau, Elizabeth	N hf 23	8	O	2
577	McGnire, Catherine	N E cor 14	9	O	2
593	McNeil, Sarah	pt N hf 18	8	O	2
614	McNeil, Nancy	S hf 18	8	O	2
176	McPhail, Ellen	E hf S hf 14	8	O	2
569	McArthur, Dugald	N hf 22	10	O	9
570	McArthur, John	N hf 22	10	O	9
627	McNeil, James	E hf N hf 21	6	O	11
732	Pinecombe, John	N hf 22	9	O	9
324	Pritchard, Martha E	pt E hf S hf 20	9	O	14

Roll No.

865 Sa

412 Sa

960 T

PAR

171

380

420

62

W

7

W

8

W

W

POLLING SUB-DIVISION No. 5.

Roll No.	NAME.	LOT.	Concession or Street.	Other Description.	P.O.
865	Sabine, Julia	W hf S hf 15	6	O	2
412	Scott, Wm	S hf 22	8	O	22
960	Thompson, John R	pt N hf 15	10	O	2

PART III.—Persons Entitled to Vote at Elections to the Legislative Assembly ONLY.

171	Campbell, John	S hf 23	9	M F	9
380	Gough, Nelson	N hf 22	7	M F	2
426	Hill, Wm	S hf 13	6	M F	2
624	McKellar, Donald	S hf 23	7	M F	32
	<i>W McLeau Astor n/2 14</i>				2
751	Pettit, Abraham	S hf 22	9	M F	2
	<i>W Dickard M. M. H. 1.</i>				2
835	Ringrose, George	S hf 13	7	M F	2
	<i>W Sabine Thomas n/2 S/2 15</i>				11
1228	Woodworth, Albert	N hf 22	8	M F	2
	<i>W Taylor Herbert n/2 23</i>				2
1034	Watts, William	S hf 24	9	M F	9

Polling Sub-Division No. 6,

Comprising all that portion of the Township lying in the 7th, 8th, 9th and 10th
Concessions West of the Side Road between Lots 12 and 13.

PART I.--Persons Entitled to Vote at BOTH Municipal Elections and Elections to the Legislative Assembly.

Roll No.	NAME.	LOT.	Concession or Street.	Other Description.	P.O.
	3 Andrews, John H.	N E cor 8	8	M F and O	2
J 2	Adair, John E	W hf N hf 6	8	M F and O	2
J 30	Barnett, Edwin	pt N hf 11	9	M F and O	2
	37 Bennett, James	N hf N hf 5	10	M F and O	2
J 38	Bennett, George	N hf N hf 5	10	M F and O	2
J 39	Bennett, Arthur	E hf N hf 5	10	M F and O	2
J 42	Bolton, Wm J	S hf 8	10	M F and O	2
J 32	Black, Arch	Cen pt 11	9	M F and T	2
	33 Black, Alex	Cen pt 11	9	M F and T	2
J 43	Barry, Michael	S hf S hf 1 & other prem	7 and 8	M F and O	8
J 44	Bryant, Wm	E pt S hf 5	8	M F and O	2
J 338	Ballantine James	W hf S hf 7	8	M F and O	2
	68 Bairns, John	S hf 2 and other prem	7	M F and O	7
J 66	Ball, Thomas jr	W hf S hf 6	7	M F and O	2
J 69	Bairns, Michael	S hf 2 and other prem	7	M F and O	2
	137 Collins, John	pt N hf 11	9	M F and O	2
J 139	Collins, Bruce O	pt W hf 11	8	M F and T	2
	140 Collins, Oscar	pt W hf 11	8	M F and O	2
	141 Collins, James	pt N hf 16	9	M F and O	2

Roll No.	NAME.	LOT.	Concession or Street.	Other Description.	P.O.
	155 Case, George	Cen pt N hf 4	10	M F and O	2
J 156	Case, John	Cen pt N hf 4	10	M F and F S	2
J 157	Case, James	E pt N hf 4	10	M F and O	2
	160 Chute, Edmund	W hf 6, W hf N hf 5	.9	M F and O	2
J 161	Chute, Lionel	W hf 6, W hf N hf 5	.9	M F and T	2
	162 Chute, Jesse	W hf 6, W hf N hf 5	.9	M F and F S	2
J 163	Cowan, Wm	N hf 7 and other prem	.9	M F and O	2
J 164	Cowan, Leslie R.	S hf 7 and other prem	.9	M F and T	2
J 169	Cawthrope, Wm	N hf 9, pt N hf 11	8 and 9	M F and O	2
	180 Columbus, Isaac	N hf 12	7	M F and O	2
J 182	Campbell, John A.	E hf S hf 12	7	M F and O	2
	165 Cowan, Alex	E pt N hf 2	8	M F and O	8
J 166	Cowan, Ronald	E hf S hf 3, E hf S hf 4	8	M F and O	2
	167 Cowan, Dougald	W hf S hf 4	8	M F and O	2
J 168	Columbus, James	E pt N hf 10	8	M F and O	2
	158 Clement, George	N hf 7	8	M F and O	2
J 173	Caldwell, Thomas	S pt 1	7	M F and T	13
	181 Columbus, Isaac jr.	N hf 12	7	M F and F S	2
J 281	Dodge, John	N hf W hf 3	10	M F and O	2
J 282	Doan, Abraham	W hf N hf 7	9	M F and O	2
J 283	Drake, John	E pt S hf 5	9	M F and O	2
J 280	Dodge, Thor	W hf 3	10	M F and O	2
J 310	Elliott, George A	E pt S hf 12	9	M F and O	2
	309 Elliott, Wm H	W pt S hf 12	9	M F and O	2
J 323	Ferguson, Ed G	E pt S hf 5	10	M F and O	2
J 320	Ferguson, Richard	pt 10 and 11	9	M F and O	2
	322 Farthing, Wm	N pt E pt 12	8	M F and O	2

Roll No.	NAME.	LOT.	Concession or Street.	Other Description.	P.O
J 321	Farthing, John	S pt E $\frac{1}{2}$ E $\frac{1}{2}$ 11 & other pre.	8	M F and O	2
J 326	Ferguson, James	E hf 10, pt 10 and 11	8 and 9	M F and O	2
J 339	Fisher, Clement	S hf 7	8	M F and T	2
J 368	Gregory, Thomas	E hf N $\frac{1}{2}$ 1, W $\frac{1}{2}$ S $\frac{1}{2}$ 1	9 and 10	M F and O	8
J 363	Gilzean, George D.	W pt 10	9	M F and O	2
376	Gripton, Henry	W hf E hf 11	8	M F and O	2
377	Gripton, Wm T.	W hf E hf 11	8	M F and F S	2
369	Getty, Wm C.	Cen pt N hf 8	8	M F and O	2
J 370	Gallagher, Owen	N hf 2	7	M F and O	2
371	Gallagher, Michael	N hf 2	7	M F and F S	2
372	Gallagher, Eugene	N hf 2	7	M F and F S	2
J 373	Gallagher, John	W hf S hf 3	8	M F and O	2
J 408	Hunter, Cyrus	N E hf 6	9	M F and O	2
J 409	Harrington, Daniel	N hf 1	8	M F and O	8
410	Harrington, John sr.	W hf S hf 1	8	M F and O	8
J 411	Harrington, John jr.	W hf S hf 1	8	M F and O	8
J 488	Jones, William	W pt N hf 8	9	M F and T	2
J 485	Jennings, John	S E pt S hf 11	9	M F and T	2
J 490	Kernohan, John	N hf 2	9	M F and O	8
491	Kitchen, John D.	E pt S hf 9, pt 6	9 and 8	M F and O	2
J 492	Kitchen, Hiram	S hf N hf 8	8	M F and T	2
J 493	Kitchen, Harman	W pt S hf 9	9	M F and T	2
519	Lamont, Donald jr.	N hf 11, pt 10	7	M F and F S	2
J 511	Lamont, John	S hf 9	8	M F and O	2

Roll No.	NAME.	LOT.	Concession or Street.	Other Description.	P.O.
J 517	Lamont, Donald	N hf 11, pt 10	7	M F and O	2
J 515	Lihon, James	E pt N hf 5	9	M F and T	2
	518 Lamont, Duncan	N hf 11, pt 10	7	M F and F S	2
J 525	Lamont, Arch	S hf 11, pt S hf 10	7	M F and O	2
J 555	Morrow, Thos	W hf N hf 8, pt 7	7	M F and T	2
	553 Mann, James	W pt N hf 4	10	M F and O	2
J 579	McGurn, Edward	E pt S hf 2	9	M F and O	8
J 580	McGurn, Wm	E pt S hf 2	9	M F and O	8
J 582	McDongall, Hugh	N hf 4, W hf S hf 5	7 and 8	M F & O & T	2
J 583	McDongall, Dunean	N hf 4, W hf S hf 5	7 and 8	M F & T & O	2
J 572	McDongall, Allan	S hf 6	8	M F and O	2
	585 McNeil, John sr	S hf S hf 8	8	M F and O	2
	583 McNeil, John jr	S hf S hf 8	8	M F and F S	2
	587 McNeil, Arch	S hf S hf 8	8	M F and F S	2
	588 McNeil, Alex	S hf S hf 8	8	M F and F S	2
	1037 McArthur, Neil	N hf 5	8	M F and O	2
J 584	McDongall, Allan	W hf S hf 5	8	M F and O	2
	<i>McDongall John N 5/8</i>			<i>7 F and F S</i>	<i>2</i>
	688 Nichols, Edward	pt N hf 12	9	M F and T	2
J 686	Northcott, Jas E	S hf 8	9	M F and O	2
	692 Northcott, Ed H	E hf W hf S hf 6	7	M F and O	1
	689 Noble, John	E pt N hf 3	9	M F and O	2
	711 Ogg, Andrew	E hf N hf 8	7	M F and O	2
J 714	Oak, Thor	E pt N hf 3	8	M F and O	8
	712 Oak, Lawrencee	W pt N hf 3	8	M F and O	2
J 713	Oak, James	W pt N hf 3	8	M F and O	2

Roll No.	NAME.	LOT.	Concession or Street.	Other Description.	P.O.
J 742	Pearson, Edward	W hf S hf 1	9	M F and O	8
J 733	Pike, William	N hf N hf 6	10	M F and O	2
J 734	Patterson, Thomas	S hf N hf 6	10	M F and O	2
J 735	Patterson, George	W hf 2	10	M F and O	8
J 736	Patterson, Andrew	E hf 2	10	M F and O	8
J 737	Patterson, Joseph	pt N hf S hf 5	10	M F and O	2
739	Powers, John	W pt N hf 9	9	M F and O	2
J 755	Perkins, Peter	W hf W hf 11	8	M F and P	2
J 749	Pilfrey, Wm A	S W pt S hf 10	9	M F and O	2
J 750	Pilfrey, John	S W pt S hf 10	9	M F and O	2
J 752	Powers, Alfred	S hf 9	7	M F and O	2
753	Powers, John A	S hf 9	7	M F and FS	2
J 744	Paine, John J	W hf S hf 4	9	M F and O	8
J 745	Payne, Thos H	E hf S hf 3	9	M F and O	8
J 758	Patterson, Neil	S hf 3	7	M F & O & T	7
J 738	Powers, Joseph	N W pt N hf 9	9	M F and O	2
J 741	Parsons, Edwin	S hf 9	10	M F and T	2
J 789	Quick, Wm	W hf S hf 7	9	M F and O	2
790	Quick, Robt J	W hf S hf 7	9	M F and FS	2
J 796	Robinson, Joseph	N pt S hf 7	10	M F and T	2
J 797	Robinson, Thos	N pt S hf 7	10	M F and T	2
J 798	Root, Nathaniel	E pt N hf 6	8	M F and O	2
J 837	Saxton, Francis B	pt N hf 9 & other prem	10	M F and O	2
J 839	Stuart, Jos W	pt N hf 11	9	M F and O	2
J 850	Saxton, Wm B	cent pt 12 & other pre	8	M F and O	2
J 851	Saxton, John R	E hf N hf 3	7	M F and O	2
852	Saxton, John E	S W pt 12	8	M F and O	2
J 845	Sabine, Richard	W pt N $\frac{1}{2}$ 10 & other pre	8	M F and T	2

R II N.	NAME.	LOT.	Concession or Street.	Other Description.	P.O.
J 843	Simpson, Charles	pt N hf 10, pt S hf 10	8 and 9	M F and O	2
	841 Schram, Fred.	N hf S hf 8	8	M F and O	2
J 842	Schram, John	N hf S hf 8	8	M F and O	2
J 836	Saxton, Swain	N hf 9	7	M F and O	2
J	853 Snelgrove, Samuel	W hf S hf 12	7	M F and O	2
J 963	Tull, Joseph	S hf E hf 3	10	M F and O	2
	974 Vincent, Jacob	N hf S hf 8	7	M F and O	2
J 973	Vineent, George	S hf S hf 8	7	M F and O	2
J 838	Vincent, George sr	S hf 4	10	M F and O	2
	1030 Waters, Samuel	pt N hf 11	9	M F and O	2
J 1038	Wilson, John W	N hf 5	8	M F and T	2
J 1039	Whiting, John jr	W pt N hf 5	7	M F and O	2
J 1040	Whiting, John sr	E pt N hf 5	7	M F and O	2
J 1050	Waken, Albert	W hf S hf 5	7	M F and O	7
J 1042	Weekes, Christopher	N hf 6	7	M F and T	2
J 1065	Zavitz, George	pt N hf 11	9	M F and O	2

PART II.—Persons Entitled to Vote at Municipal Elections ONLY.

31	Adamson, James	cent pt 11	9	O	15
484	Allison, Peter J.	S E pt S hf 11	9	O	2
41	Barton, Julia	E cor N hf 8	8	O	2
159	Cowan, Mary	N hf 4	8	O	2

Roll No.	NAME.	LOT.	Concession or Street.	Other Description.	P.O
278	Degraw, Eliza	pt N hf 11	9	O	2
759	Davidson, Ann	E hf S hf 3	7	O	2
365	Gunn, Hector	N hf 8	10	O	2
407	Healey, James	N hf 1	10	O	2
483	Jeffrey, David	S cor S hf 9	10	O	2
172	Kettlewell, George	S pt 1	7	O	16
512	Lambert, Rachel	W hf N hf 7	7	O	2
581	Lethbridge, Samuel	N hf 4	7	O	2
516	Lindsav, W B	pt N hf 3	9	O	2
740	Lea, John	S hf 9	10	O	14
366	Murray, Wm H	N hf 8	10	O	2
554	Morrow, Ann	W hf N hf 8, pt 7	7	O	2
571	McCaffrey, Elizabeth	W hf S hf 3	9	O	8
844	McWhimney, John	W pt N hf 10	8	O	2
715	Ogden, Henry H	N E cor N hf 9	10	O	20
746	Payne, Margaret	E hf S hf 1	9	O	8
756	Pinecombe, Richard	E hf S hf 12	8	O	2
747	Pearson, Joseph	W hf N hf 1	9	O	8
743	Pettit, Richard	W pt S hf 5	9	O	8

Roll No.	NAME.	LOT.	Concession or Street.	Other Description.	P.O.
514	Reynolds, Isabella	13 pt N hf 5	9	O	2
795	Robinson, Amelia	N pt S hf 7	10	O	2
799	Rowe, Wm O	W hf N hf 2	8	O	8
800	Rowe, Wm	W pt S hf 2	9	O	8
840	Saxton, George	pt S hf 7	10	O	2

PART III.—Persons Entitled to Vote at Elections to the Legislative Assembly ONLY.

760	Campbell, John L	S hf 4	7	M F	2
279	Dodge, George	W hf 3	10	M F	2
367	Deere, Edward	N hf 8	10	M F	2
513	Long, George	S hf 6	8	M F	2
748	Parker, Duncan	N hf 4	7	M F	2
996	Waters, John	pt N hf 12	9	M F	2
1035	Wrinkle, Joseph	N hf 1	10	M F	2
1064	Young, Albert E	E hf 10	8	M F	2

Polling Sub-Division No. 7,

Comprising all that portion of the Township lying in the 3rd, 4th and 5th
Concessions East of the Side Road between Lots 12 and 13.

PART I.--Persons Entitled to Vote at BOTH Municipal Elections and Elections to the Legislative Assembly.

Roll No.	NAME.	LOT.	Concession or Street.	Other Description.	P.O.
J 4	Adams, Ebenezer	S hf N hf 20	5	M F and O	1
J 27	Adair, Joseph H	N hf 15	4	M F and O	1
J 28	Adair, Wm N	N hf 15	4	M F and F S	1
J 9	Arnold, Robert	pt N hf 17, pt S hf 17	3 and 4	M F and T	1
J 8	Adams, Renben	pt S hf 17	4	M F and O	1
J 12	Arnold, Renben	E $\frac{1}{2}$ S $\frac{1}{2}$ 20, & other pre	4	M F and O	1
13	Arnold Albert	E $\frac{1}{2}$ S $\frac{1}{2}$ 20, & other pre	4	M F and F S	1
10	Arnold, Joshua	pt N hf 17, pt S hf 17	3 and 4	M F and F S	1
29	Adair, John W	N hf 15	4	M F and F S	1
J 62	Baxter, Francis	N pt N hf 16	5	M F and O	1
J 59	Baxter, Thomas	S pt N hf 16	5	M F and O	1
J 60	Bond, William	N hf 17	5	M F and O	1
J 73	Bond, James	S pt S hf 15	5	M F and O	1
J 72	Bond, Robt	W hf S hf 14, N hf 14	5 and 4	M F & O & T	1
J 78	Bond, Stephen	pt N hf 14	3	M F and O	1
J 79	Benjamin, Joseph	E hf S hf 14	4	M F and T	1
J 83	Bond, George	E pt S $\frac{1}{2}$ 10 & other pre	4 and 5	M F and O	1
J 80	Black, George	pt E hf 18	4	M F and O	1
J 81	Black, Wm T	pt E hf 18	4	M F and T	1
85	Bidnall, Edward	S cor S hf 23	3	M F and O	1

Roll No.	NAME.	LOT.	Concession or Street.	Other Description.	P.O.
J 61	Brearly, Henry	N hf N hf 20	4	M F and O	1
J 56	Branton, Wm	E hf N hf 23, N hf 22	4	M F & O & T	10
	1086 Badge, George	pt S hf 18	3	M F and O	1
	1087 Badge, Wm	N pt S hf 18	3	M F and O	1
J 132	Badge, Humphrey	N hf N hf 18	3	M F and O	1
	190 Carman, Edward	E hf S hf 19	5	M F and O	1
J 183	Campbell, John	pt W $\frac{1}{2}$ 22, pt E $\frac{1}{2}$ 22	5	M F and O	10
J 186	Campbell, Donald M.	E hf N hf 23	5	M F and O	11
J 187	Campbell, Arch L	E hf N hf 23	5	M F and T	11
	200 Campbell, Mal sr	N hf 13	4	M F and O	2
J 201	Campbell, Peter	N hf 13	4	M F and T	2
J 198	Campbell, Mal jr	W hf N hf 13	5	M F and O	2
J 202	Courtis, Wm	W $\frac{1}{2}$ N $\frac{1}{2}$ 15, & other pre.	5	M F and O	1
	203 Courtis, Thomas	W $\frac{1}{2}$ N $\frac{1}{2}$ 15, & other pre.	5	M F and F S	1
J 212	Clement, Morris	pt W hf 18	4	M F and O	1
J 213	Chamberlain, Wm	E pt S hf 23	3	M F and O	1
J 214	Coates, Furlow	W pt S hf 19	3	M F and O	1
J 1093	Clark, John	1, 2 blk E, pt 17	2 and 3	M F and O	1
	1092 Cullen, John	9 to 14, E Ad st	3, Mt Bgs	M F and O	1
J 290	Davidson, John J	S hf 20, pt 19	4 and 5	M F and O	1
J 289	Davidson, Thomas	W $\frac{1}{2}$ S $\frac{1}{2}$ 19, & other pre.	4 and 5	M F and O	1
	1084 Davidson, Thomas	W Ad st 16	3 Mt Bys	M F and O	1
J 312	Edwards, Richard	N pt S hf 15	5	M F and O	1
J 329	Fletcher, Dugald	pt E hf 22, & other pre.	5	M F and O	10
	341 Forsythe, Wm	pts 17 and 18	3	M F and O	1

Roll No.	NAME.	LOT.	Conces-ion or Street.	Other Description.	P.O
J 362	Francis, Chas B.	pt S hf N hf 18	3	M F and O	1
1097	Fisher, George	W Adst 6,7,8 & other pre.	3, Mt Bgs	M F and O	1
J1098	Francis, Wm	pt S hf 17 & other pre	3	M F and O	1
378	Green, Edward	E hf N hf 21	5	M F and O	2
J 379	Green, Thomas	E hf N hf 21, pt 20	5 and 6	M F & O & T	2
J 384	Getty, Albert	N hf 15	3	M F and O	1
J 386	Glover, David	W hf S hf 21	4	M F and O	1
J 387	Glover, James	W hf S hf 22	4	M F and O	1
1110	Geddes, Wm	N E cor N $\frac{1}{2}$ 22 & other pre.	3	M F and O	1
1109	Gardiner, David	3, 4, 5 E Emer st	3, Mt Bgs	M F and O	1
J 440	Hyatt, Horace	N hf 13 & other prem	3	M F & O & T	1
441	Humphrey, George	pt N hf 17	3	M F and O	1
J 478	Iles, Wm	pt N hf 18, W $\frac{1}{2}$ S $\frac{1}{2}$ 18	4 and 5	M F and T	1
J 520	Lamont, Duncan	N hf 24	4	M F and O	10
J 521	Lamont, Hugh	S cor S hf 23	4	M F and O	10
522	Leitch, Christopher	E hf S hf 18	5	M F and O	1
524	Leitch, Saml R B	E hf S hf 18	5	M F and F S	1
523	Leitch, James C	E hf S hf 18	5	M F and F S	1
J 531	Lipsit, Levi	E pt S hf 19	3	M F and O	1
529	Lindsay, Geo H	S hf 16	3	M F and O	1
J 551	Lipsit, Lewis	S hf N hf 20	4	M F and T	1
1131	Lipsit, George	E Ad st 17	3, Mt Bgs	M F and T	1
J 550	Milner, James	S hf N hf 20	4	M F and O	1
J 556	Mahon, John	W pt N hf 16	4	M F and O	1

Roll No.	NAME.	LOT.	Concession or Street.	Other Description.	P.O.
1134	Maleolm, Wallace....	E Ad st 15, 16, Mt Bgs..	3.....	M F and O....	1
J1133	Mines, James.....	pts 17, 18 & other pre ..	3.....	M F and O....	1
J 616	McBain, Duga'd.	S hf 23.....	5.....	M F and O....	10
J 618	McMurphy, Dunean..	W hf N hf 23.....	4.....	M F and O....	10
J 619	McMurphy, John	W hf N hf 23.....	4.....	M F and T....	10
620	McCallum, Neil.....	N hf 24	5.....	M F and O....	10
621	McCallum, John	N hf 24	5.....	M F and T....	10
J 646	McDougall, Alex ...	pts 13 and 14.....	5.....	M F and O....	2
J 693	Northcott, Wm.....	pt N hf 16	4.....	M F and O....	1
697	Norton, Wm	N W pt N hf 22.....	3.....	M F and O....	1
694	Northcott, Thos A..	pt N hf 16	4.....	M F and O....	1
J 771	Parrott, George B....	W $\frac{1}{2}$ S $\frac{1}{2}$ 13 & other pre ..	4.....	M F and O....	1
772	Parrott, John S.....	W $\frac{1}{2}$ S $\frac{1}{2}$ 13 & other pre ..	4.....	M F and F S..	1
773	Parrott, Edward	W $\frac{1}{2}$ S $\frac{1}{2}$ 13 & other pre ..	4	M F and F S..	1
J 866	Sabine, Caleb.....	E hf N hf 15	5.....	M F and O....	2
881	Sisson, Joseph	pt S hf 16	4.....	M F and O....	1
J 882	Smith, Wm H.....	W hf S hf 20	4.....	M F and O....	1
883	Smith, Wm.....	W hf S hf 20 ...	4.....	M F and O....	1
886	Sullivan, Thos	W hf N hf 20.....	3.....	M F and O....	1
J 887	Sullivan, John	W hf N hf 20.....	3.....	M F and T....	1
J 857	Snelgrove, Wm	N hf 19.....	5.....	M F and O....	1
J 858	Snelgrove, Wm Y....	E hf N hf 18, pt 18	5 and 6.....	M F and O....	1
J 859	Snelgrove, Lemuel....	W hf N hf 18.....	5.....	M F and O....	1
J 885	Sutherland, Robt	S hf 13.....	3.....	M F and O....	1
J 884	Steer, Richard	W hf S hf 14.....	3.....	M F and O....	1
888	Steer, Robert.....	S hf 13.....	3.....	M F and F S..	1

Roll No.	NAME.	LOT.	Concession or Street.	Other Description.	P.O.
J 932	Thomas, David	S hf 21	3	M F and O	1
938	Thompson, John H	W pt S hf S hf 14	3	M F and O	1
1160	Tupper, Martin	W Ad st 15, P st 15	3, Mt Bgs	M F and T	1
J 967	Toulinson, Mr	S hf 24	5	M F and O	10
J 971	Veale, Wm	cent pt 16	5	M F and O	1
975	Veale, Richard	W pt S hf 16	5	M F and O	1
J 972	Veale, Arch	pt S hf 16	5	M F and O	1
J 977	Vennor, Solomon	N hf 16	3	M F and O	1
978	Vennor, Francis	N hf 16	3	M F and F S	1
982	Vannatter, John N	E pt N hf 21	3	M F and O	1
979	Vannatter, Daniel	pt 19	4	M F and O	1
980	Vannatter, Jas E	pt 19	4	M F and O	1
976	Veale, John R	W pt S hf 16	5	M F and F S	1
J 992	<i>Wm Magwood James. At 9/10 17</i> Waters, Arch	N hf 19	3	M F and O	1
1047	Wilton, Daniel	W hf S hf 17	5	M F and O	1
J 1048	Wilton, Thos	E hf S hf 17	5	M F and O	1
J 1055	Wicket, Richard	W hf S hf 13	5	M F and O	2
J 1056	Waters, Lindley	E hf S hf 13	5	M F and O	2
J 988	Wyatt, Wm	W hf S hf 14, pt 13	4	M F and O	1
J 989	Winter, Wm	S hf 15	4	M F and O	1
J 993	Willsie, Asa	E hf N hf 20	3	M F and O	1
990	Winter, George	E pt N hf 21	3	M F and O	1
J 994	Walker, Chris	S hf 24	3	M F and O	1
J 999	Weekes, Thomas	S hf 20	3	M F and O	1
1170	Wadsworth, Thos	Park 3, 5, 6	3 Mt Bgs	M F and O	1
1171	Wadsworth, George	Park 3, 5, 6	3 Mt Bgs	M F and F S	1

PART II.—Persons Entitled to Vote at Municipal Elections ONLY.

Roll No.	NAME.	LOT.	Concession or Street.	Other Description.	P.O.
84	Badge, Betsy	pt N hf 17	3	O	1
71	Campbell, Arch	N hf 14	4	O	2
1096	Fisher, Keziah	E Ad st 7, and other pre	3 Mt Bgs	O	1
1111	Gibson, Hannah	10 to 14, W Ad st	3 Mt Bgs	O	1
1108	Gustin, Sarah J.	pt S hf 17	3	O	1
439	Getty, Mary	N hf 13	3	O	2
385	Getty, Amity	E pt N hf 14	3	O	1
406	Graham, Duncan	S hf 24	4	O	10
1115	Hoffman, Andrew	pt reserve	3 Mt Bgs	O	1
1128	London, Sarah	Park 1,2, and other pre	3 Mt Bgs	O	1
1130	Lapsit, Jane	E Ad st 17	3 Mt Bgs	O	1
615	McIntaggart, Lauchlin	N hf 24	3	O	10
601	McKellar, Neil	pt S hf 23	4	O	11
617	McIntyre, Hugh	N hf 21	4	O	10
685	McEvoy, Andrew M.	pt 17	4	O	14
1229	McEvoy, John M.	pt 17	4	T	14
55	McMurphy, John	E hf N hf 23	4	O	10
774	Pool, Joseph	E hf S hf 22	4	O	24
1159	Porter, J O.	W Ad st 15	3	O	27
887	Steer, Emily	S hf 13	3	O	1

PART III.—Persons Entitled to Vote at Elections to the Legislative Assembly ONLY.

Roll No.	NAME.	LOT.	Concession or Street.	Other Description.	P.O
7	Amies, George	N hf 14	4	M F	1
11	Arnold, John	pt N hf 18	3	M F	1
	<i>Wong's Shop</i>	<i>8 Fts/2/15</i>	<i>5</i>	<i>M F</i>	<i>1</i>
210	Cox, Calvin E	N hf 14	3	M F	1
211	Cave, Thomas	N hf 17	3	M F	1
340	Fisher, Benjamin	pt N hf 17 and 18	3	M F	1
718	Orr, Charles	E hf N hf 15	5	M F	1
868	Steinhoff, Abraham	N pt S hf 15	5	M F	2
856	Snelgrove, Joshua	E pt 16	5	M F	1
969	Thody, Wm	N E pt 14	5	M F	2
981	Vannatter, James	S hf 19	4	M F	1

625 of the within named voters are qualified to serve on Juries.

I, M. McGUGAN, Clerk of the Municipality of Caradoc, in the County of Middlesex, do hereby certify that parts one and three of the within list constitute a correct list for the year 1890, of all persons appearing by the last revised assessment roll of the said Municipality to be entitled to vote at elections for members of the Legislative Assembly; and that parts one and two constitutes a correct list for said year of all persons appearing by the said roll to be entitled to vote at Municipal Elections in said Municipality, and I hereby call upon all electors to examine the said list, and if any omissions or other errors are perceived therein, to take immediate proceedings to have the said errors corrected according to law.

Dated this 7th day of July, 1890.

M. McGUGAN,

Clerk of the aforesaid municipality of Caradoc,

Strathroy P. O.

slative

P.O.
on.

.....	1
.....	1
.....	1
.....	1
.....	1
.....	1
.....	1
.....	2
.....	1
.....	2
.....	1

... of Mid-
tute a cor-
assessment
bers of the
st for said
Municipal
amine the
immediate

Paradoc,
hroy P. O.

The Sheriff shall immediately, upon the receipt of his copies, cause one of them to be posted up in a conspicuous place in the Court House; the Clerk of the Peace, upon the receipt of his copies, shall cause one of them to be posted in a conspicuous place in his office; every Public or Separate School Head Master or Mistress shall in like manner post up one of his or her copies on the door of the School House and every Postmaster shall post up one of his copies in his Post Office.—39 Vic. Chap. 11, Sec. 2.

