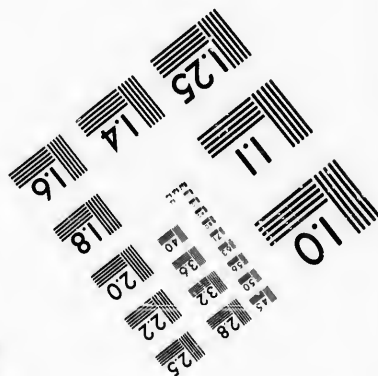
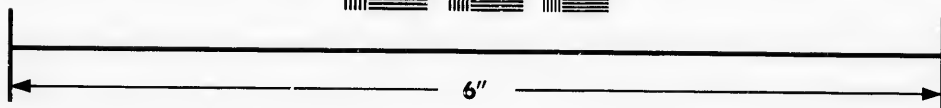
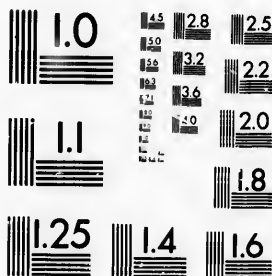


**IMAGE EVALUATION
TEST TARGET (MT-3)**



**Photographic
Sciences
Corporation**

23 WEST MAIN STREET
WEBSTER, N.Y. 14580
(716) 872-4503

14.5
16
18
20
22
25
28
32
36
40
45

**CIHM/ICMH
Microfiche
Series.**

**CIHM/ICMH
Collection de
microfiches.**



Canadian Institute for Historical Microreproductions / Institut canadien de microreproductions historiques

10

© 1986

Technical and Bibliographic Notes/Notes techniques et bibliographiques

The Institute has attempted to obtain the best original copy available for filming. Features of this copy which may be bibliographically unique, which may alter any of the images in the reproduction, or which may significantly change the usual method of filming, are checked below.

L'Institut a microfilmé le meilleur exemplaire qu'il lui a été possible de se procurer. Les détails de cet exemplaire qui sont peut-être uniques du point de vue bibliographique, qui peuvent modifier une image reproduite, ou qui peuvent exiger une modification dans la méthode normale de filmage sont indiqués ci-dessous.

- Coloured covers/
Couverture de couleur
- Covers damaged/
Couverture endommagée
- Covers restored and/or laminated/
Couverture restaurée et/ou pelliculée
- Cover title missing/
Le titre de couverture manque
- Coloured maps/
Cartes géographiques en couleur
- Coloured ink (i.e. other than blue or black)/
Encre de couleur (i.e. autre que bleue ou noire)
- Coloured plates and/or illustrations/
Planches et/ou illustrations en couleur
- Bound with other material/
Relié avec d'autres documents
- Tight binding may cause shadows or distortion
along interior margin/
La reliure serrée peut causer de l'ombre ou de la
distorsion le long de la marge intérieure
- Blank leaves added during restoration may
appear within the text. Whenever possible, these
have been omitted from filming/
Il se peut que certaines pages blanches ajoutées
lors d'une restauration apparaissent dans le texte,
mais, lorsque cela était possible, ces pages n'ont
pas été filmées.
- Additional comments:/
Commentaires supplémentaires:

- Coloured pages/
Pages de couleur
- Pages damaged/
Pages endommagées
- Pages restored and/or laminated/
Pages restaurées et/ou pelliculées
- Pages discoloured, stained or foxed/
Pages décolorées, tachetées ou piquées
- Pages detached/
Pages détachées
- Showthrough/
Transparence
- Quality of print varies/
Qualité inégale de l'impression
- Includes supplementary material/
Comprend du matériel supplémentaire
- Only edition available/
Seule édition disponible
- Pages wholly or partially obscured by errata
slips, tissues, etc., have been refilmed to
ensure the best possible image/
Les pages totalement ou partiellement
obscurcies par un feuillet d'errata, une pelure,
etc., ont été filmées à nouveau de façon à
obtenir la meilleure image possible.

This item is filmed at the reduction ratio checked below/
Ce document est filmé au taux de réduction indiqué ci-dessous.

10X	12X	14X	16X	18X	20X	22X	24X	26X	28X	30X	32X
<input type="checkbox"/>	<input type="checkbox"/>	<input type="checkbox"/>	<input type="checkbox"/>	<input type="checkbox"/>	<input type="checkbox"/>	<input checked="" type="checkbox"/>	<input type="checkbox"/>	<input type="checkbox"/>	<input type="checkbox"/>	<input type="checkbox"/>	<input type="checkbox"/>

The copy filmed here has been reproduced thanks to the generosity of:

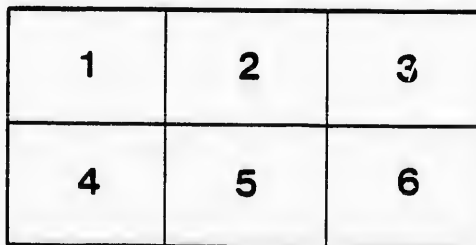
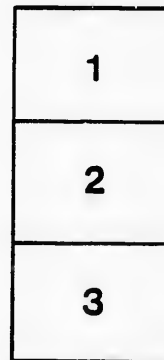
D. B. Weldon Library
University of Western Ontario
(Regional History Room)

The images appearing here are the best quality possible considering the condition and legibility of the original copy and in keeping with the filming contract specifications.

Original copies in printed paper covers are filmed beginning with the front cover and ending on the last page with a printed or illustrated impression, or the back cover when appropriate. All other original copies are filmed beginning on the first page with a printed or illustrated impression, and ending on the last page with a printed or illustrated impression.

The last recorded frame on each microfiche shell contain the symbol \rightarrow (meaning "CONTINUED"), or the symbol ∇ (meaning "END"), whichever applies.

Maps, plates, charts, etc., may be filmed at different reduction ratios. Those too large to be entirely included in one exposure are filmed beginning in the upper left corner, left to right and top to bottom, as many frames as required. The following diagrams illustrate the method:



L'exemplaire filmé fut reproduit grâce à la générosité de:

D. B. Weldon Library
University of Western Ontario
(Regional History Room)

Les images suivantes ont été reproduites avec le plus grand soin, compte tenu de la condition et de la netteté de l'exemplaire filmé, et en conformité avec les conditions du contrat de filmage.

Les exemplaires originaux dont la couverture en papier est imprimée sont filmés en commençant par le premier plat et en terminent soit par la dernière page qui comporte une empreinte d'impression ou d'illustration, soit par le second plat, selon le cas. Tous les autres exemplaires originaux sont filmés en commençant par la première page qui comporte une empreinte d'impression ou d'illustration et en terminent par la dernière page qui comporte une telle empreinte.

Un des symboles suivants apparaîtra sur la dernière image de chaque microfiche, selon le cas: le symbole \rightarrow signifie "A SUIVRE", le symbole ∇ signifie "FIN".

Les cartes, planches, tableaux, etc., peuvent être filmés à des taux de réduction différents. Lorsque le document est trop grand pour être reproduit en un seul cliché, il est filmé à partir de l'angle supérieur gauche, de gauche à droite, et de haut en bas, en prenant le nombre d'images nécessaire. Les diagrammes suivants illustrent la méthode.

ails
du
odifier
une
image

rata
o

elure,
à

THE CROWNING
OF MUSIC



GRAND
OPERA HOUSE,
LONDON, ONT.
SEASON
1899-1900.

W. E. ROOPE
MANAGER.

The Christian Nov. 7/99

SMITH BROS.,

TELEPHONE
538

LEADING PLUMBERS.

265 DUNDAS STREET,

LONDON, ONT.

Advertiser Job Dept.

WHERE PEOPLE CONGREGATE, THERE ADVERTISE.

† THE †
..PROGRAMME..

The primary idea of this Programme is, of course, to enlighten the audience as to the personnel of the artists taking part in the performances, incidentally to serve as a guide to the plot of the piece, and generally to give such information as will tend to the enjoyment of the auditor.

But there is a fund of information in the advertisements that may be seriously considered with profit.

The publishers are prepared to attend to all business in the way of general and special advertising.

Respectfully,
BELTON & ROOT,
Advertising Agents.

HARRY MCKENNA,

...DEALER IN...

CHOICE TOBACCONIST'S GOODS,

Always Open after the Opera.

Retail and Wholesale.

225 DUNDAS STREET.

Read and Reflect.

The management reserves the right to refuse admission to anyone.

DOORS open for matinees at 2 p. m. ; curtain rises at 2.30 p. m.

Evenings.—Doors open at 7.30, and curtain rises at 8.15 p. m. sharp.

Tickets can be reserved two days in advance without extra charge.
Office open from 9 a. m. to 5 p. m.

Seats can be secured by mail, telegraph or telephone. Telephone 732.

Seats ordered by Telephone or in Person, and not called for by 7.30 o'clock on the night of performance, will then be sold to avoid loss to the Theatre.

Physicians are requested to register at the Box Office, leaving seat number as this will enable Ushers to find them, if called for, without disturbing the audience.

Children in arms not admitted to evening performances. Children three years old or over, full price.

Patrons will confer a favor by reporting to the management any incivility or inattention on the part of the employees, and annoyances of any nature.

If the individual members of an audience would stop to think for just an instant, they would undoubtedly appreciate the fact that the habit of rising from their seat and leaving the theatre before the curtain falls, is a most annoying one, and one that should be stopped. We therefore beg our audiences to kindly remain in their seats until the close of the performance.

Carriages can be ordered at the Box Office or of the Chief Usher.

For all lost articles, apply at Box Office.

It is strange, but there is a class of people that seem to take an intense delight in bespattering the floor with tobacco juice, and in being boisterous and using profane language. These people should know at once that the courts authorize their immediate expulsion, should the management seem fit to exercise its rights.

...TAILORS...

Telephone 844.

399 Richmond St., LONDON.

Grand Opera House

LONDON, ONT.

C. J. WHITNEY, Lessee.

SEASON 1899-1900.

A. E. ROOT, Manager.

PROGRAMME.

Tuesday, November 7th.

Lieber & Co. Present HALL GAINES' Powerful Play

THE CHRISTIAN

Produced under the Personal Supervision of the Author.

NOTE.—Although the play is described as founded on the novel, it is to be understood that the dramatic version is an entirely independent one, differing from the story in various important incidents, and not altogether the same either in its characters or its motive.—*The Author.*

Programme continued on next page.

BELTON
AND
ROOT

Bill Posting, Distrib-
uting and General
Advertising Agents

Control all the Bill Boards and Dead Walls throughout the City. Population of City, 40,000. All orders for Bill Posting, Distributing, Card Tacking, and General Advertising for Western Ontario will receive prompt attention.

OFFICE:—BOX OFFICE OPERA HOUSE

The London Daily News has the largest sworn cir-

SMOKE THE 



VETERAN

10c. Cigar.



MANUFACTURED BY

W. C. ROSS, London.

PROGRAMME.


CAST OF CHARACTERS.

The Hon. John Storm.....	J. M. Colville
Lord Storm.....	W. S. St. Clair
Horatio Drake.....	Frank Weston
Lord Robert Ure.....	Edward Emery
Archdeacon Wealthy.....	Frank A. Lyon
Father Bamplugh.....	Robert Harold, Jr.
Parson Quayle.....	J. Scott Anderson
The "Faro King".....	Harry Sutton
The Manager.....	Frederick Maynard
Brother Paul.....	Mart J. Cody
Mrs. Callender.....	Carrie Lee Stoyle
Polly Love.....	Fanchon Campbell
Betty.....	Jane Wheatley
Letty.....	Edith De Groff
Nettie.....	Sue Van Duser
Liza.....	Mildred Burnham
Mag.....	Ida Parks
Glory Quayle.....	Miss Effie Ellsler

Footmen, Commissionaire, Servants, etc.

Programme continued on next page.

Buy your DIAMONDS and WATCHES, at
WARD'S JEWELRY, 374 Richmond Street.

Your Washing Done for 2½c.
No Rubbing. 

Miracle Washing Compound.

2 CAKES FOR 5c DINGNAM & CO.,

At your Grocer's.

Toronto.

culatation in Canada, Toronto and Montreal excepted.

High Grade
Toilet Soaps,
Perfumes and
Toilet Powders.

A NEW
IMPORTATION
...JUST RECEIVED...

W. T. STRONG & CO.
Dispensing Chemists.
 184 DUNDAS STREET,
 LONDON.

PROGRAMME.

SYNOPSIS OF SCENES.

PROLOGUE.—The tilting ground in the ruins of Peel Castle, Isle of Man. Love's Cross-Roads.

ACT I.—Two years pass. The Saloon of the Colosseum Music Hall, London. The Chaplet of Flowers.

ACT II.—One week passes. The club-room of St. Mary Magdalene's Church, Soho. The Crown of Thorns.

ACT III.—One week passes. Glory's apartments in "The Garden House," Clement's Inn. The Triumph of Love.

ACT IV.—One night passes. The club-room of St. Mary Magdalene's Church, Soho. Love's Sacrifice.

Programme continued on next page.

.....Free Admission to this Theatre may be made by buying.....

GAS

COKE

Now \$4.00 per Ton.

Will Advance Later On.

• • •

Equal in every respect
to Hard Coal

.....FOR.....

Furnaces, Base Burners,
Ranges and Grates.

CITY GAS COMPANY, 401 Clarence Street.

Smoke David Harum Cigar.

A. WOLF,
Tobacconist

Has an assortment of Imported Cigars that is worth considering.

366 Richmond Street.
202 1/2 Dundas Street.

WM. STEVELY & SON,

—DEALERS IN—

Cooking and Heating Stoves and Ranges for Coal or Wood, Lamp Goods, Cutlery and General House Furnishings.

362 RICHMOND STREET.

F. N. Harvey, L.D.S.

DENTIST

204 DUNDAS STREET.

OFFICE RESTAURANT

Opposite the Richmond Street exit of Opera House.

Choice Wines, Liquors and Cigars. Dining Parlors Upstairs.

D. SARE.

PROGRAMME.



The Incidental Music written by WILLIAM FURST, Empire Theatre.

Scenery Painted by LOUIS YOUNG.

EXECUTIVE STAFF FOR LIEBLER & CO.

Archie McKenzie.....	Acting Manager.
Tunis F. Dean.....	Business Manager.
O B. Smith.....	Representative
Mart J. Cody.....	Stage Manager.

Programme continued on next page.

"MATCHLESS BELL PIANOS" Take the Lead.

Used exclusively at Grand Opera House.

SANBORN & TREBILCOCK, Sole Agents for London, 183 Dundas Street.

PA
He
Les
Jen
All
Da
Ed
Cel
Mrs
Ma

PR

Fo
No

F

Op

Smoke Uneda Cigar.

High-toned Instruments for
Cultured People

The MASON & RISCH PIANO

Is the acme of Musical Perfection—The Crowned
King of Stringed Harmony.

LONDON WAREROOMS—213 Dundas Street.

Next Attraction



Thursday, November 9th,
the Great American Play,
By Lloyd Boyd

PARSON JIM

The Strongest American Comedy-Drama since the days of "My Partner."
Four Acts of Scenic Splendor. An Unrivalled Company.

THE CAST.

PARSON JIM (late of Richard Mansfield's Co.)	W. H. PASCOE
Herbert Payne, a Boston banker (late leading St. Louis Stock Co.)	Fred Bock
Lester Abbott, his nephew (late Olga Nethersole's Co.)	Frank Lander
Jennings, a detective (late Julia Marlowe's Co.)	Frank Currier
Allen Campbell, retired sea captain (late of Fanny Davenport's Co.)	Thomas Doyle
Dave Campbell, his son (late of Wm Gillete's "Secret Service Co.")	Walter Thomas
Edna, Jim's foster-sister	Miss Genevieve Warren
Celia Wilson (late of Lederer's "A Dangerous Maid Co.")	Miss Martha Rudesill
Mrs. Fairchild, Jim's Mother (late of James A. Herne's "Shore Acres" Co.)	Miss May Tyrrell
May, Jim's Sister (late of "Way Down East" Co.)	Miss Dalias Tyler

The play produced under the stage direction of Byron Douglas.

PRICES—First Two Rows Circle, \$1 ; Lower Floor, 75c ; Balcony, 50c ; Gallery, 25c.

For Latest Styles.....
Nobby, Well Made Clothes,

—GO TO—

FAIRBAIRN

...The Tailor

Opposite City Hall, Richmond St.

"Let us change our breath"

Is a phrase familiar
in the west as a social
invitation. It is quite
as appropriate in the
east.

Breathlets will do it

5c.

A good advertiser recognizes the value of a good medium. Theatres are the attractions, Programmes the medium. Try them.

T. CONNOR

Wholesale and Retail
Butcher.

Stalls, 6 & 7 Covent Garden Market.

The Original Swiss Electro-Chemical Ring

ESTABLISHED 1878.
None genuine without Trade-Mark in each ring. The first introduced in America. All others are imitations.

Rheumatism

in all its various forms. **Neuralgia, Gout, Lumbago, Diabetes, Bright's Disease, Asthma** are all caused by **Uric Acid in the Blood**. The Metals of which this ring is composed, in connection with the acid create an **Electro-Chemical** action, removing the acid and curing the disease.

123 California St.
San Francisco, Cal. Sept. 25, 1899

The Swiss-American Ring Co.
Gentlemen - I suffered with Rheumatism 15 Years and Diabetes for the past 5 Years with indications of Bright's Disease. Expended large sums seeking a cure, but all in vain, until the Rev Geo F Warren recommended your Swiss Electro-Chemical Ring so highly that I sent for one. Have been wearing the ring four months and since the first week after I put it on, have not had a touch of Rheumatism and not a sign of kidney trouble. I would not part with the ring for \$10000 if I could not get another.

Very truly yours, *Chas. H. Hill*

Price \$2
SILVER COVERED \$3
GOLD COVERED \$4

Sent by mail or C.O.D. Express. For size cut hole in card that fits finger or jeweler's measure. Money refunded if not satisfactory after wearing 30 days.

THE SWISS-AMERICAN RING CO.
EXPRESS BUILDING WINDSOR, ONT., CANADA
4 OPERA BLOCK, DETROIT, MICH. U.S.A.

Advertising is the foundation of all successful enterprises. If your advertisement was here it would be read by every visitor to this theatre.

