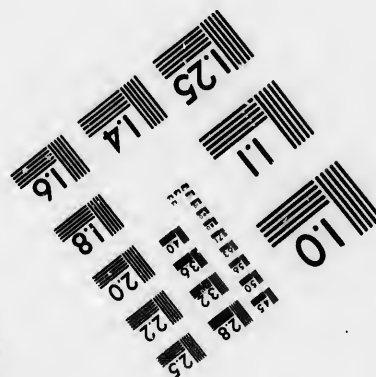
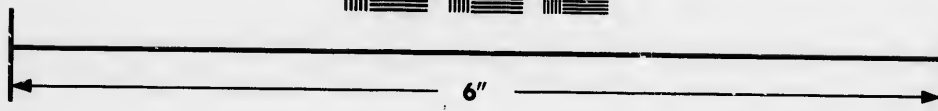
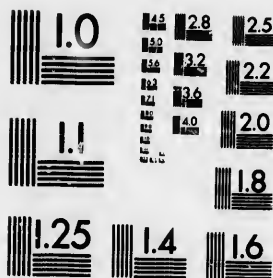


# IMAGE EVALUATION TEST TARGET (MT-3)



Photographic  
Sciences  
Corporation

23 WEST MAIN STREET  
WEBSTER, N.Y. 14580  
(716) 872-4503

**CIHM/ICMH  
Microfiche  
Series.**

**CIHM/ICMH  
Collection de  
microfiches.**



**Canadian Institute for Historical Microreproductions / Institut canadien de microreproductions historiques**

**© 1986**

# Technical and Bibliographic Notes/Notes techniques et bibliographiques

The Institute has attempted to obtain the best original copy available for filming. Features of this copy which may be bibliographically unique, which may alter any of the images in the reproduction, or which may significantly change the usual method of filming, are checked below.

L'institut a microfilmé le meilleur exemplaire qu'il lui a été possible de se procurer. Les détails de cet exemplaire qui sont peut-être uniques du point de vue bibliographique, qui peuvent modifier une image reproduite, ou qui peuvent exiger une modification dans la méthode normale de filmage sont indiqués ci-dessous.

- ☐ Coloured covers/  
Couverture de couleur
- ☐ Covers damaged/  
Couverture endommagée
- ☐ Covers restored and/or laminated/  
Couverture restaurée et/ou pelliculée
- ☐ Cover title missing/  
Le titre de couverture manque
- ☐ Coloured maps/  
Cartes géographiques en couleur
- ☐ Coloured ink (i.e. other than blue or black)/  
Encre de couleur (i.e. autre que bleue ou noire)
- ☐ Coloured plates and/or illustrations/  
Planches et/ou illustrations en couleur
- ☐ Bound with other material/  
Relié avec d'autres documents
- ☐ Tight binding may cause shadows or distortion along interior margin/  
La reliure serrée peut causer de l'ombre ou de la distorsion le long de la marge intérieure
- ☐ Blank leaves added during restoration may appear within the text. Whenever possible, these have been omitted from filming/  
Il se peut que certaines pages blanches ajoutées lors d'une restauration apparaissent dans le texte, mais, lorsque cela était possible, ces pages n'ont pas été filmées.

- ☐ Coloured pages/  
Pages de couleur
- ☐ Pages damaged/  
Pages endommagées
- ☐ Pages restored and/or laminated/  
Pages restaurées et/ou pelliculées
- ☒ Pages discoloured, stained or foxed/  
Pages décolorées, tachetées ou piquées
- ☐ Pages detached/  
Pages détachées
- ☒ Showthrough/  
Transparence
- ☐ Quality of print varies/  
Qualité inégale de l'impression
- ☐ Includes supplementary material/  
Comprend du matériel supplémentaire
- ☐ Only edition available/  
Seule édition disponible
- ☐ Pages wholly or partially obscured by errata slips, tissues, etc., have been refilmed to ensure the best possible image/  
Les pages totalement ou partiellement obscurcies par un feuillet d'errata, une pelure, etc., ont été filmées à nouveau de façon à obtenir la meilleure image possible.

☒ Additional comments: [Printed ephemera] [2] p.  
Commentaires supplémentaires:

This item is filmed at the reduction ratio checked below/  
Ce document est filmé au taux de réduction indiqué ci-dessous.

10X	12X	14X	16X	18X	20X	22X	24X	26X	28X	30X	32X
								<input checked="" type="checkbox"/>			

The copy filmed here has been reproduced thanks to the generosity of:

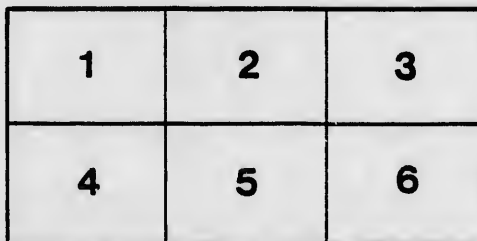
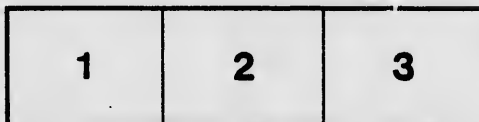
D. B. Weldon Library  
University of Western Ontario  
(Regional History Room)

The images appearing here are the best quality possible considering the condition and legibility of the original copy and in keeping with the filming contract specifications.

Original copies in printed paper covers are filmed beginning with the front cover and ending on the last page with a printed or illustrated impression, or the back cover when appropriate. All other original copies are filmed beginning on the first page with a printed or illustrated impression, and ending on the last page with a printed or illustrated impression.

The last recorded frame on each microfiche shall contain the symbol ➡ (meaning "CONTINUED"), or the symbol ▼ (meaning "END"), whichever applies.

Maps, plates, charts, etc., may be filmed at different reduction ratios. Those too large to be entirely included in one exposure are filmed beginning in the upper left hand corner, left to right and top to bottom, as many frames as required. The following diagrams illustrate the method:



L'exemplaire filmé fut reproduit grâce à la générosité de:

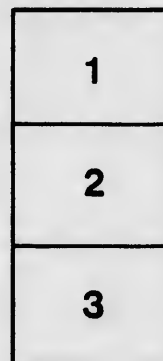
D. B. Weldon Library  
University of Western Ontario  
(Regional History Room)

Les images suivantes ont été reproduites avec le plus grand soin, compte tenu de la condition et de la netteté de l'exemplaire filmé, et en conformité avec les conditions du contrat de filmage.

Les exemplaires originaux dont la couverture en papier est imprimée sont filmés en commençant par le premier plat et en terminant soit par la dernière page qui comporte une empreinte d'impression ou d'illustration, soit par le second plat, selon le cas. Tous les autres exemplaires originaux sont filmés en commençant par la première page qui comporte une empreinte d'impression ou d'illustration et en terminant par la dernière page qui comporte une telle empreinte.

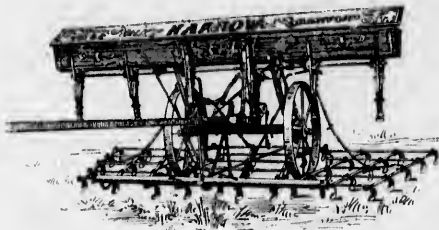
Un des symboles suivants apparaîtra sur la dernière image de chaque microfiche, selon le cas: le symbole ➡ signifie "A SUIVRE", le symbole ▼ signifie "FIN".

Les cartes, planches, tableaux, etc., peuvent être filmés à des taux de réduction différents. Lorsque le document est trop grand pour être reproduit en un seul cliché, il est filmé à partir de l'angle supérieur gauche, de gauche à droite, et de haut en bas, en prenant le nombre d'images nécessaire. Les diagrammes suivants illustrent la méthode.



# EAGLE SULKY HARROW CO.

## BRANTFORD, ONT.



The above cuts represents our **Eagle Sulky Harrow and Seeder Combined**, an implement which has attained the highest degree of perfection and is one which better supplies a want long felt by Farmers in general than any other Agricultural Implement manufactured.

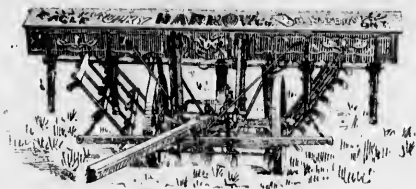
The steel used in its construction is rolled expressly for our use, and is oil-tempered and tested in the severest manner before leaving our works.

The experience of the past has thoroughly demonstrated the fact that broadcast seeding where the seed is evenly distributed and properly covered is the best method of sowing grain known, and also that no harrow in use will so thoroughly prepare the seed-bed or is so well adapted for covering the seed as those of the broad-tooth class.

Our Seeder Attachment is the latest improved Force-feed, and can be attached or removed from the Harrow by any person in a few minutes.

It is adjustable to the frame, has land-measure, adjustable feed tubes, and all the late improvements in Seeders. It is under the complete control of the driver, and the large number of farmers

The Eagle Sulky Harrow Company, of Brantford, Ont., have practically the best and cheapest Harrow in the market, constructed upon an entirely new and simple plan. Light Draft, no Walking, no Loading or Unloading to transport from field to field, as it can be raised entirely off the ground when desired by simply using the levers. This, too, can be done from the driver's seat to relieve the Harrow from clogs and those numerous obstructions so common to rough soil. It is constructed of the very best material in the market, Solid Steel Teeth in Every Harrow, and Solid Steel Spokes in Every Wheel, and is designed to fill a long felt want in the agricultural world, as it is a well known fact that the present cumbersome and altogether unsatisfactory Harrow is unable to do the necessary work, and is altogether unworthy of the age in which we live. It is as far in advance of the present Harrow in use as the



who have used it, pronounce it the best seeder of any kind in the market.

The teeth are made from spring steel so bent, grooved and pointed, and so adjusted to the frame that they turn and pulverize the whole surface of the ground thus making a perfect seed-bed and thoroughly covering the grain.

The Seeder is ten feet in width, thus sowing a third more ground than any other seeder on the market, while at the same time it is so constructed that there is no weight on the horses' necks and the draft is no greater than an ordinary harrow.

This Harrow detached from the Seeder has no equal for pulverizing the sod; it thoroughly cuts without turning over the sod.

For hard fallow or fall ploughing it can not be equalled by any implement now in use.

It is the most easily handled in stumpy, rooty or stoney ground of any harrow ever used, while as a fallow cultivator it cuts and combs out the trash in a manner equalled by no other Implement.

This Harrow is sold also without the seeder attachment, and with a number of different styles of teeth.

latest improved binder is in advance of the old fashioned sickle. Past attempts to remedy this has brought out many other altogether unnecessary and expensive implements.

The above cuts show this Harrow both in the working and travelling positions. The great danger of leaving teams attached to Harrows or in turning around is entirely overcome by this invention, and any child capable of driving a team can do as much work with this implement as a full grown person, and that too without wearisome trudging that has always been necessary with the old kind.

The Harrow can be extended to almost any size, and is very light in draft.

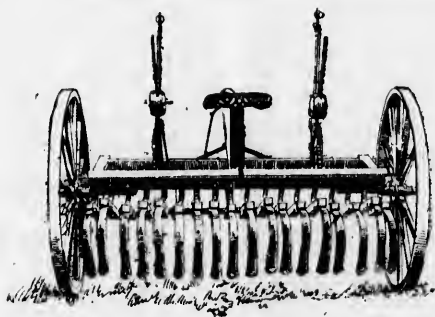
We are desirous of securing a good reliable Agent in every Township to exhibit and sell this necessity.

To see it is all that is necessary in order to sell it to any intelligent farmer.

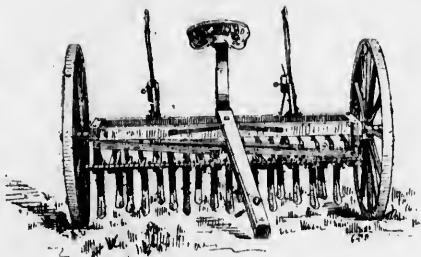
For further particulars, write to the following gentlemen who have these machines in use: Alonzo Young, Decewsville, Ont.; J. Y. Brown, Brantford, Ont.; David Gibson, Ameliasburg, Ont.; W. A. Anderson, York; John Hope, Ox Bow Farm, Brantford, Ont.; Rev. R. Ashton, Mohawk Institute Farm, Brantford, Ont.; Richard Weir, York, Ont.; Alex. J. McAlpine & Sons, Crowland, Ont.; F. Comfort, Otterville, Ont.

# EAGLE

## Sulky Spring-Tooth Cultivator.



Strong  
Durable  
Easily  
Adjusted



This harrow has given almost universal satisfaction, and we have made valuable improvements which will make it even better than last season.

This harrow has many advantages over any other made or invented. It is very simple in construction and not liable to get out of repair.

The wheel running over an obstacle does not prevent any of the teeth from continuing the work. Any one or more teeth may pass over a fast obstacle and not prevent the balance of them working. You can cultivate a dead furrow without the least trouble. It works into hollows and cultivates them thoroughly, when others would leave them untouched. It adjusts itself to any surface.

It can be fastened down rigidly if required, but would seldom, if ever, be so used. The Lever can be fastened out of the Katchet, leaving the depth of the teeth controlled by a sliding weight. The thinnest sod can be cultivated without tearing it up, or the hardest land can be thoroughly worked.

Don't fail to see the **Best and only Adjustable Spring Tooth Harrow made.**

The draft is light and easy for the horses, being directly from the horse to the points of the teeth.

The great weight upon the horses' necks, which is a serious objection to all other Wheel Harrows, is entirely obviated in this, the Pole being perfectly free and the horses being only obliged to sustain the weight of it alone.

It can be used to CULTIVATE CORN by removing two or more teeth as desired. One bolt only to be taken out to remove a tooth.

We would refer you to Mr. Daniel Whiting, of Brantford Township, also Mr. Joseph Jackson, Bailiff and Auctioneer, who has charge of most of the farmer's sales, he says they sell better than any other Implement offered to the farmers at those sales. We can give you the names of hundreds of our best farmers who have used them, and speak of them as being one of the best Implements in use.

MANUFACTURED BY

## EAGLE SULKY HARROW CO.,

BRANTFORD, ONT.

