

**CIHM
Microfiche
Series
(Monographs)**

**ICMH
Collection de
microfiches
(monographies)**



Canadian Institute for Historical Microreproductions / Institut canadien de microreproductions historiques

© 1996

Technical and Bibliographic Notes / Notes technique et bibliographiques

The Institute has attempted to obtain the best original copy available for filming. Features of this copy which may be bibliographically unique, which may alter any of the images in the reproduction, or which may significantly change the usual method of filming are checked below.

- Coloured covers / Couverture de couleur
- Covers damaged / Couverture endommagée
- Covers restored and/or laminated / Couverture restaurée et/ou pelliculée
- Cover title missing / Le titre de couverture manque
- Coloured maps / Cartes géographiques en couleur
- Coloured ink (i.e. other than blue or black) / Encre de couleur (i.e. autre que bleue ou noire)
- Coloured plates and/or illustrations / Planches et/ou illustrations en couleur
- Bound with other material / Relié avec d'autres documents
- Only edition available / Seule édition disponible
- Tight binding may cause shadows or distortion along interior margin / Le reliure serrée peut causer de l'ombre ou de la distorsion le long de la marge intérieure.
- Blank leaves added during restorations may appear within the text. Whenever possible, these have been omitted from filming / Il se peut que certaines pages blanches ajoutées lors d'une restauration apparaissent dans le texte, mais, lorsque cela était possible, ces pages n'ont pas été filmées.
- Additional comments / Commentaires supplémentaires:

L'Institut a microfilmé le meilleur exemplaire qu'il lui a été possible de se procurer. Les détails de cet exemplaire qui sont peut-être uniques du point de vue bibliographique, qui peuvent modifier une image reproduite, ou qui peuvent exiger une modifications dans la méthode normale de filmage sont indiqués ci-dessous.

- Coloured pages / Pages de couleur
- Pages damaged / Pages endommagées
- Pages restored and/or laminated / Pages restaurées et/ou pelliculées
- Pages discoloured, stained or foxed / Pages décolorées, tachetées ou piquées
- Pages detached / Pages détachées
- Showthrough / Transparence
- Quality of print varies / Qualité inégale de l'impression
- Includes supplementary material / Comprend du matériel supplémentaire
- Pages wholly or partially obscured by errata slips, tissues, etc., have been refilmed to ensure the best possible image / Les pages totalement ou partiellement obscurcies par un feuillet d'errata, une pelure, etc., ont été filmées à nouveau de façon à obtenir la meilleure image possible.
- Opposing pages with varying colouration or discolourations are filmed twice to ensure the best possible image / Les pages s'opposant ayant des colorations variables ou des décolorations sont filmées deux fois afin d'obtenir le meilleur image possible.

This item is filmed at the reduction ratio checked below /
Ce document est filmé au taux de réduction indiqué ci-dessous.

	10X		14X		18X		22X		26X		30X
	12X		16X		20X		24X		28X		32X
							✓				

The copy filmed here has been reproduced thanks to the generosity of:

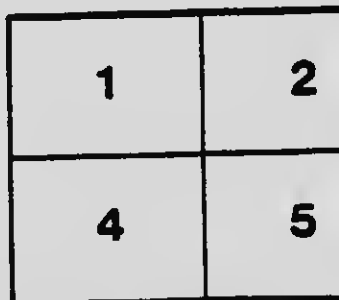
National Library of Canada

The images appearing here are the best quality possible considering the condition and legibility of the original copy and in keeping with the filming contract specifications.

Original copies in printed paper covers are filmed beginning with the front cover and ending on the last page with a printed or illustrated impression, or the back cover when appropriate. All other original copies are filmed beginning on the first page with a printed or illustrated impression, and ending on the last page with a printed or illustrated impression.

The last recorded frame on each microfiche shell contain the symbol \rightarrow (meaning "CONTINUED"), or the symbol ∇ (meaning "END"), whichever applies.

Maps, plates, charts, etc., may be filmed at different reduction ratios. Those too large to be entirely included in one exposure are filmed beginning in the upper left hand corner, left to right and top to bottom, as many frames as required. The following diagrams illustrate the method:



L'exemplaire filmé fut reproduit grâce à la générosité de:

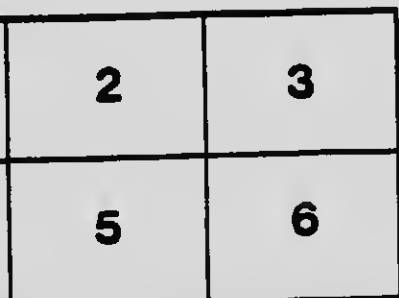
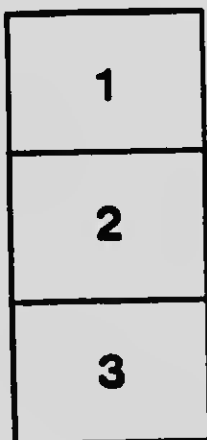
Bibliothèque nationale du Canada

Les images suivantes ont été reproduites avec le plus grand soin, compte tenu de la condition et de la netteté de l'exemplaire filmé, et en conformité avec les conditions du contrat de filmage.

Les exemplaires originaux dont la couverture en papier est imprimée sont filmés en commençant par le premier feuillet et en terminant soit par la dernière page qui comporte une empreinte d'impression ou d'illustration, soit par le second feuillet, selon le cas. Tous les autres exemplaires originaux sont filmés en commençant par la première page qui comporte une empreinte d'impression ou d'illustration et en terminant par la dernière page qui comporte une telle empreinte.

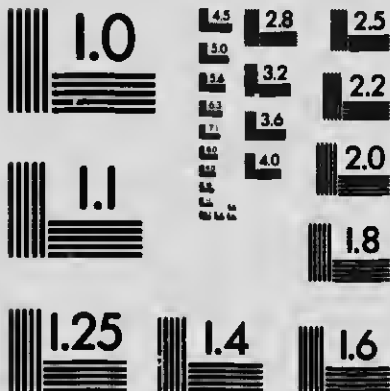
Un des symboles suivants apparaît sur la dernière image de chaque microfiche, selon le cas: le symbole \rightarrow signifie "À SUIVRE", le symbole ∇ signifie "FIN".

Les cartes, planches, tableaux, etc., peuvent être filmés à des taux de réduction différents. Lorsque le document est trop grand pour être reproduit en un seul cliché, il est filmé à partir de l'angle supérieur gauche, de gauche à droite, et de haut en bas, en prenant le nombre d'images nécessaire. Les diagrammes suivants illustrent la méthode.



MICROCOPY RESOLUTION TEST CHART

(ANSI and ISO TEST CHART No. 2)



APPLIED IMAGE Inc

1653 East Main Street 14609 USA
Rochester, New York
(716) 482 - 0300 - Phone
(716) 286 - 5989 - Fax



EL

PECT



IN

and Garden

Foster, Bond & Co., Proprietors

John H. Bond, Manager

ST. JOHN, NEW BRUNSWICK



PANORAMIC VIEW OF THE CITY G



CITY OF SAINT JOHN, N. B.

FC 2457

N478

1711

1944



E CITY OF SAINT JOHN, N. B.



THE ROYAL HOTEL

ST. JOHN, N. B.

FIRST CLASS IN EVERY RESPECT

Raymond & Doherty, Proprietors



HOTEL DUFFERIN

KING SQUARE

The only Hotel in the City with Private Lawn and Garden

Foster, Bond & Co., Proprietors

John H. Bond, Manager

ST. JOHN, NEW BRUNSWICK



BAY SHORE, ST. JOHN, N. B., SHOWING PARTRIDGE ISLAND.

NEW BRUNSWICK

CANADA



NOWHERE on this North American continent can one spend a vacation so satisfactorily and so cheaply as in the Canadian Province of New Brunswick. Here can be found every requisite to an enjoyable and satisfying holiday. The beauty of the scenery, the comfort and attractiveness of the many seashore and inland resorts, the ease and facility with which these can be reached either by land or water, the abundance of fish and game, and the unrivalled facilities for boating, camping, and canoeing must continue to make this paradise of the pleasure lover and the sportsman more and more popular. The climate is equable and bracing. Most interesting historical associations cluster about the early days when French and English struggled for supremacy. Practically every town, village and hamlet has its local traditions.

Sportsmen all know that New Brunswick is the land of big game and that more and bigger moose



KENNEBEACISIS, ROTHESAY, N. B.



RECORD MOOSE SHOT IN NEW BRUNSWICK BY DR. W. L. MUNRO, OF PROVIDENCE, R. I., ANTLERS SPREAD $68\frac{1}{4}$ INCHES,

are yearly killed in its forests than in any other section either of Canada or the United States, and that there are deer, caribou, bear and smaller game, as well as wildfowl, such as geese, ducks, partridges, woodcock and snipe to be had in abundance. The Restigouche is the world's most famous salmon river, while its greatest rivals are other New Brunswick rivers. The forests, rivers, lakes and streams lure the hunter, fisherman and canoeist with promise of the finest sport whether with gun or rod.

If your desire is to camp, canoe, fish or hunt, the New Brunswick Tourist Association, St. John, N. B., will put you in communication with guides who are reliable and trustworthy. Perhaps you prefer a quiet boarding house in some delightful country



A NEW BRUNSWICK TROUT.



MIRAMICHI SALMON TAKEN WITH ROD AND FLY.

resort or on the sea shore, or quarters in a modern hotel in a summer climate that cannot be equalled, with comfortable days, cool nights, and no hay fever. Write the Secretary, stating your wishes.

French Acadians, descendants of those hardy and intrepid pioneers who first settled North America, inhabit a large section of the province, speaking their native tongue and maintaining in a measure the manners and traditions of their ancestors. The summer tourist will find a visit among their beautiful and picturesque settlements along the upper St. John or on the North Shore one of the pleasures of a lifetime and will carry away most

Historic Interest



MONUMENT TO SAMUEL DE CHAMPLAIN, DISCOVERER OF THE SAINT JOHN, ON QUEEN SQUARE, ST. JOHN.



SUSPENSION BRIDGE AT ST. JOHN OVER REVERSING FALLS
DARK LINE ON ROCKS SHOWS HEIGHT TO WHICH
TIDE RISES WHEN FALL REVERSES.

pleasant memories and a keen appreciation of the important part the Acadians are playing in the agricultural and industrial life of Canada. The Grand Falls on the St. John river are second only to Niagara on the American continent, while the gorge is far wilder and more picturesque than that of the Niagara. Along the North Shore is seacoast scenery unrivalled on this continent.

From Boston, New Brunswick may be reached in a few hours by the All-rail Line, Boston & Maine,

GRAND FALLS, ST. JOHN RIVER.



Maine Central and Canadian Pacific Railways, or by the palatial steamers of the Eastern Steamship Company, and from Montreal by either the Canadian Pacific or Intercolonial Railways. If the tourist should be in Nova Scotia, it is but a two hours

How to Get There

voyage in a fine steamer across the Bay of Fundy from the Land of Evangeline, or an all-rail ride on the Intercolonial.

St. John, the chief commercial city of New Brunswick, has many attractions. The tides in the harbor, which have a variation of twenty to twenty-seven feet, produce a phenomenon on the water front

City of St. John

that astonishes and surprises the visitor, who is also interested in the craft of all nations loading cargo at the wharves. The remarkable Reversing Falls have no counterpart in the world. With each turn of the tide the cataract turns. Sometimes there is a fall up-river, sometimes a fall down stream, and at other times a placid surface over which a canoe or racing shell can be sailed with safety. St. John City was founded by the United Empire Loyalists, who, refusing to join in the American Declaration of Independence, abandoned their homes and moved to Canada. Among their cherished possessions was the Royal Arms which formerly hung in the Council Chamber of the Old Town



BOAR'S HEAD, ST. JOHN RIVER

by
om-
her
mal
be
ours
ndy
the
ew
the
ty-
ont
the
in
ing
rk-
ld.
ne-
wn
ver
y.
ire
an
es
ed
ly
vn

BRIDGES OVER REVERSING FALLS, ST. JOHN



House, Boston. This today occupies a place of prominence in Trinity church, and is an object of interest to many visitors to the city. The church itself, a beautiful structure, contains many other memorials that will repay inspection. Great historical interest attaches to St. John because of the defense of her husband's fortress by Madame La Tour, the wife of a French trader and adventurer. Her story, so graphically told in Whittier's beautiful poem, "St. John," is one of the noblest and saddest in the pages of the early history of the country.

With a summer temperature that never exceeds



BROWN'S BEACH AT ST. MARTINS, N. B.

eighty degrees, excellent hotel accommodation, beautiful streets, buildings and parks, St. John is a natural centre from which tourists branch out in all directions over the Maritime Provinces. Ten miles from St. John in one direction is beautiful Loch Lomond; nine miles in another, the charming village of Rothesay; and twelve miles in another is lovely Westfield on the St. John River; while closer at hand is the Bay Shore and Duck Cove, reached by the street cars, with a glorious outlook over the Bay, and fine opportunities for surf bathing. St. John in the winter season is one of the busiest ports on the Atlantic seaboard, for then great ocean steamers

ace
an
he
ny
eat
of
me
er.
ful
est

eds



ti-
ral
ns
St.
d;
of
ly
nd
he
y,
hn
he
ers

THE KENNEBECASIS AT LAKESIDE, NEAR ST. JOHN





VIEW NEAR EVANDALE ON THE ST JOHN RIVER

VIEW NEAR EVANDALE ON THE ST JOHN RIVER

BRANDY POINT, ST. JOHN RIVER, N. B.





NARROWS, ST. JOHN RIVER, N. B.

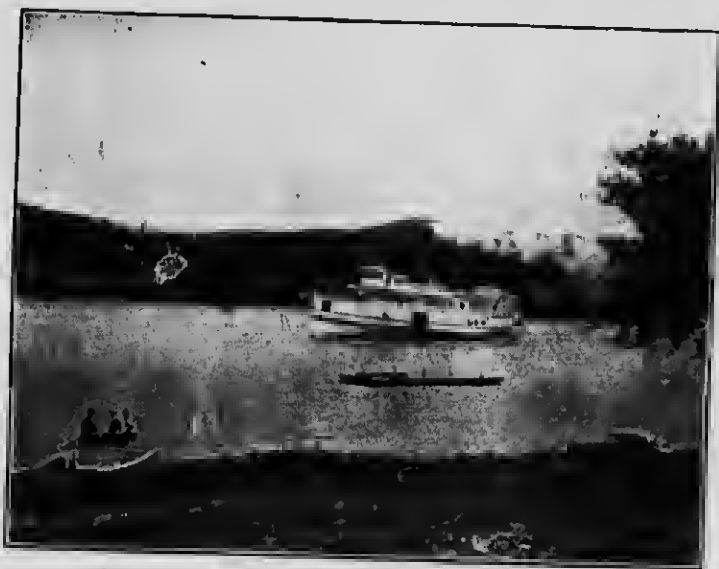
NARROWS, ST. JOHN RIVER, N. B.

ISLANDS FROM HAMPSTEAD ON THE ST. JOHN RIVER, N. B.



that in summer ply to Quebec and Montreal on the St. Lawrence come to this ice-free harbor to discharge and secure cargoes.

All summer tourists should make the voyage on the St. John River between St. John and Fredericton, and if time will permit should take side trips on the



PASSENGER STEAMER ON THE ST. JOHN RIVER

tributary rivers and lakes, also traversed by steamers. The Grand Falls also should be visited by those who enjoy natural scenery that is unrivalled.



FOSSIL ROCK, DALHOUSIE, N. B

the
arge
on
on,
he

VIEW OF FREDERICTON, N. B.



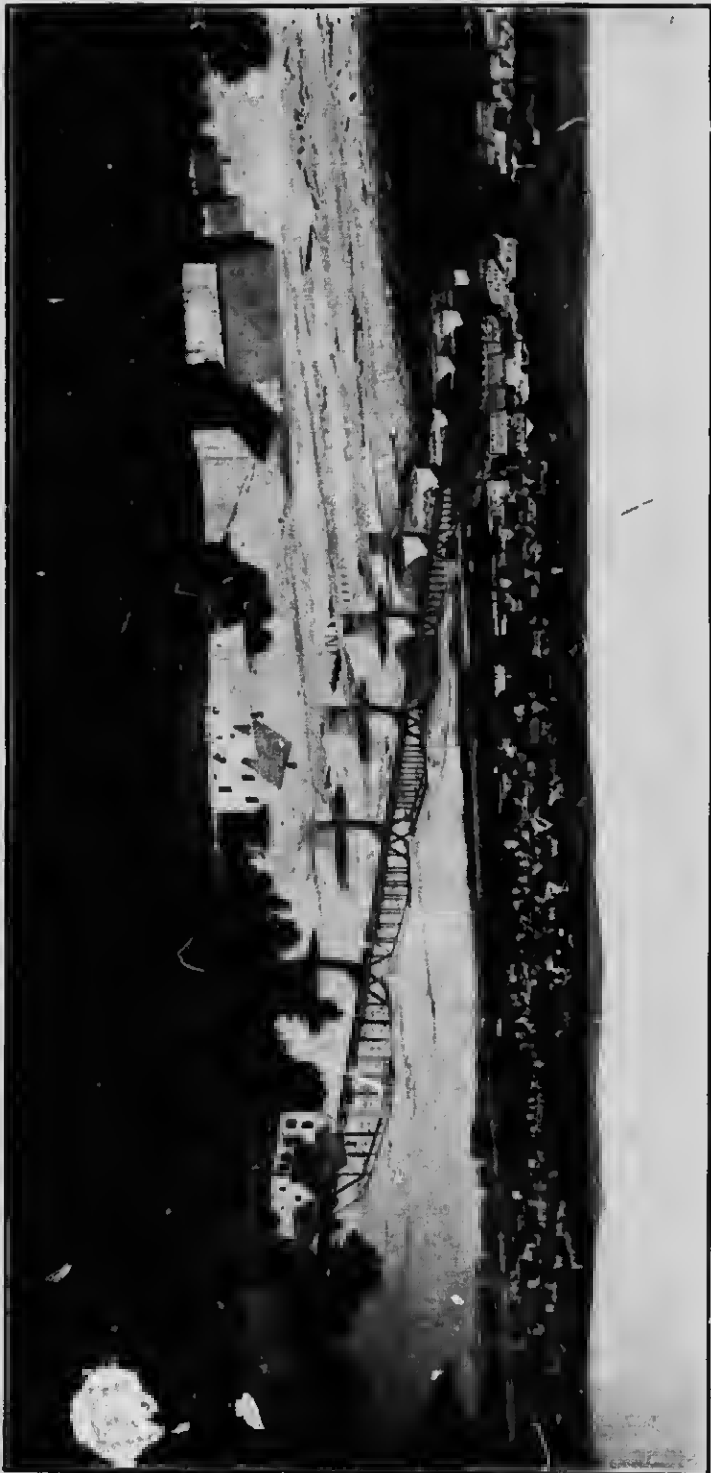


VIEW ON GREEN RIVER, MADAWASKA COUNTY, NEW BRUNSWICK

Fredericton, the capital of New Brunswick, reached either by steam or rail, is a beautiful city. The Parliament buildings, University and Provincial Normal School and the Church of England Cathedral, one of the purest specimens of Gothic architecture on the Continent, are worthy of inspection. The streets are level and shaded with beautiful trees. Old



DAM FALLS, N. W. MIRAMICHI, N. B.



WOODSTOCK, N. B.

Government House is a quaint structure of historic interest. Across the river are the towns of Gibson and St. Marys and three miles up the Nashwaak stream from Gibson is Marysville. Fredericton is a great canoeing, fishing and shooting centre.



CHARLO FALLS, N. B.

Above Fredericton, are Woodstock, Grand Falls and Edmundston, and a game country that is famous the world over.

The North Shore of New Brunswick comprising the counties of Northumberland, Gloucester and Restigouche, is also famous as resorts for sportsmen.

ric
on
ak
on

The Miramichi, Nepisiguit and Restigouche are world-famed salmon rivers, while the deep woods are the haunts of big game, and the sea shores the home of wild fowl.

The North Shore

The Miramichi, with its pretty towns of Chatham and Newcastle, and villages along the shore, is a truly noble river. Bathurst, at the mouth of the Nepisiguit, and Dalhousie and Campbellton on the Restigouche, are most attractive resorts. The Intercolonial Railway, owned and operated by the Canadian Government,



ESKIDILLOC, NEAR CHATHAM

traverses this portion of the Province, which tourists will find one of the most delightful in the whole country, the seashore resorts being particularly attractive to the summer visitor seeking beautiful beaches and cool breezes.

Other most attractive points reached by the Intercolonial, are Sussex, where the local militia camps each summer; Moncton, where the famous tidal bore of the Petitcodiac River may be seen; Sackville, a pretty university town, on the border of the great Tantramar marshes; Richibucto, Buctouche and other Kent County centres where there are magnificent beaches and beautiful scenery and good boarding houses and hotels; also to be found at Shediac, and Point du Chene, the point of departure to Prince Edward Island.



A SCENE ON THE WAY TO N. W. MIRAMICHI, N. B.

A SCENE ON THE WAY TO N. W. MIRAMICHI, N. B.

ROUGH WATERS ON THE RESTIGOUICHE.



On the Bay of Fundy, are many places which also have special charms for the tourist. Chief of these is

Bay of Fundy

St. Andrews, with its famous Algonquin Hotel, the finest summer resort in Canada, managed by the Canadian Pacific Railway Company, a guarantee that it is of the best, and Chamcook Lake, with its gamey land-locked salmon. The beautiful island of Campobello with the Campobello Inn, is another popular and well conducted resort. The island of Grand Manan also is worthy of a visit and

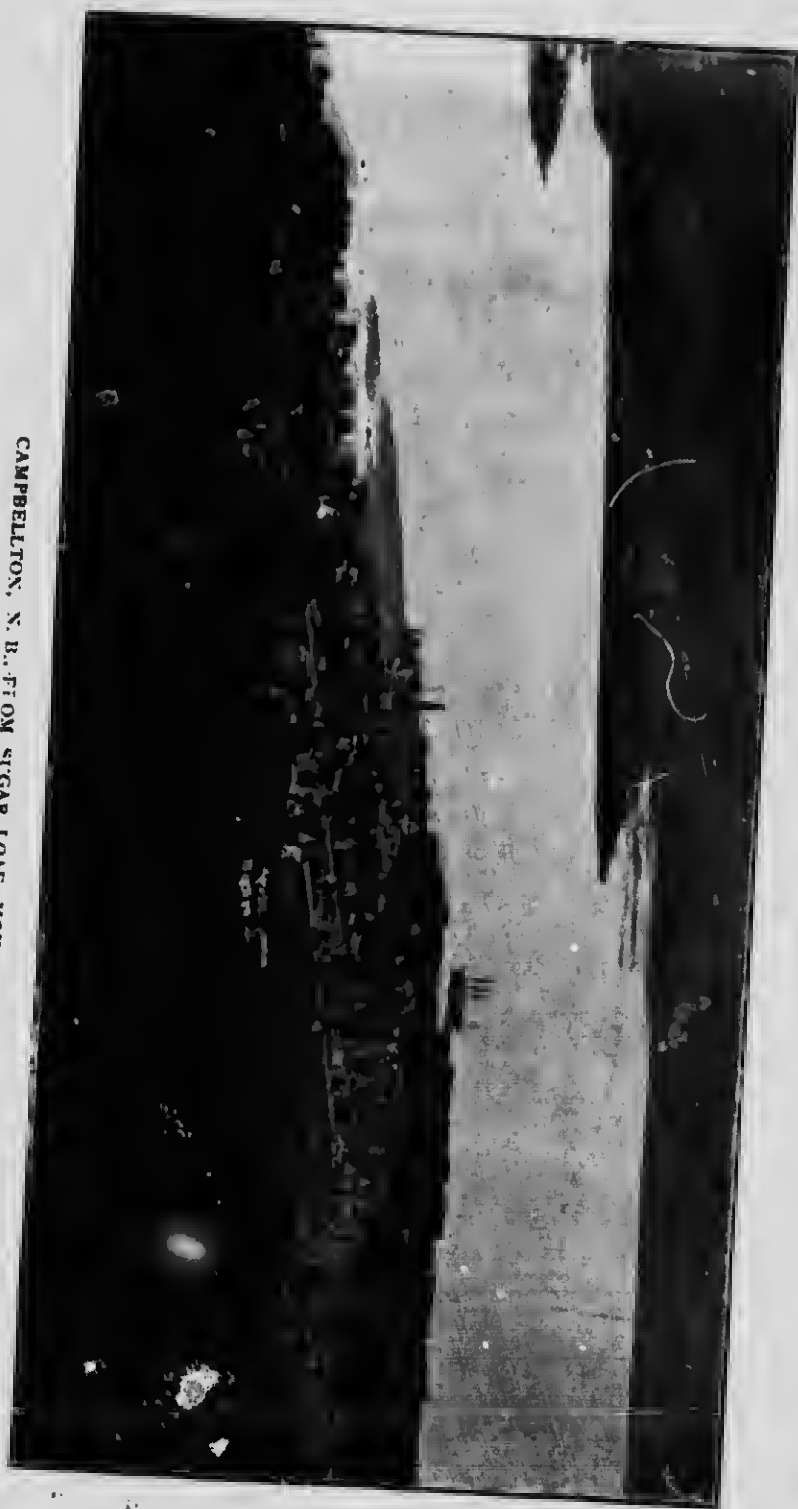


A MIRAMICHI BEAR.

those who desire salt breezes will find these places unrivalled both in the beauty of the scenery and the attractiveness of the surroundings. Other towns along the coast are St. Stephen, on the International border, St. George, the centre of probably the finest fishing region in the Province, excepting only the North Shore; St. Martins, where there is one of the most magnificent beaches along the whole Atlantic coast and excellent accommodations for summer tourists at moderate rates. Still further up the bay

h also
nese is
Algon-
resort
Cana-
ny, a
Lake,
utiful
n, is
The
and

CAMPBELLTON, N. H., FROM SUGAR LOAF MOUNTAIN.



ces
he
ns
al
est
he
ne
ic
er
y



ST. ANDREW'S, N. B.

ST. STEPHEN, N. B., ON THE INTERNATIONAL BORDER.



ST. ANDREW'S, N. B.



THE OLD GREY FRIAR. CAMPOBELLO, N. B.



INLAND BORE, MONCTON, N. B.

are Hillsboro, Hopewell, Albert and Alma. The wonderful rocks at Hopewell Cape, sculptured into many curious shapes by wave and tide, are a source of interest and wonderment to all who see them.



CAPE BRULE BEACH, SHEDIAC, N. B.



SEA BATHING IN NEW BRUNSWICK IS UNSURPASSED IN ANY PART OF NORTH AMERICA.—SURF AT ST. MARTINS BEACH, N. B.

SEA BATHING IN NEW BRUNSWICK IS UNSURPASSED IN ANY PART OF NORTH AMERICA.—SURF AT ST. MARTINS BEACH, N. B.

ON THE RESTIGOUCHE, N. B.





A NEW BRUNSWICK MOOSE—"ANSWERING THE CALL."

HOTEL LIST

Place	Hotel	Proprietor	Rate per day
St. John	Royal Hotel	Raymond & Doherty	\$3.00 to \$5.00
"	Dufferin Hotel	Foster, Bond & Co.	2.50 5.00
"	Victoria Hotel	A. M. Philips	2.00 4.00
"	Clifton House	H. E. Green	2.00 2.50
"	Park Hotel	E. Howes	2.00 2.50
"	Grand Union Hotel	W. H. McQuade	1.50 2.00
"	Lansdowne House	W. H. Bustin	1.50 2.00
"	Carvill Hall	J. F. Morrison	1.50 up
"	Ottawa Hotel	Louis Green	1.00 to 2.00
"	St. John Hotel	Mrs. H. L. Ingersol	
"	Adams House	Chas. B. Adams	
"	(North) Ferris Hotel		
"	(West) Dufferin House		1.25
"	(West) Western House		1.25
Andover	Mrs. Wm. Fleming	66 Hazen Street	1.50 2.00
Ben Lomond	Perley's Hotel	J. Allen Perley	1.50 2.00
Bonny River	Ben Lomond House	Mrs. S. H. Barker	1.50 2.00
Bathurst	Bonny River House	T. A. Sullivan	2.00 up
"	Robertson's Hotel	Geo. Robertson	2.00
"	Sweeney House	W. Sweeney	
"	The White House	J. White	1.50 up
"	Wilbur House	Percy Wilbur	1.50 up
"	Louger House	A. Landry	
Bartibogue	Bartibogue Hotel	Albert Connell	1.50 to 2.00
Beulah	Beulah Caup	R. H. Smith	1.50
Campobello	Campobello Inn	Campobello Corp. Ltd	3.00 up
Chatham	Adams House	John C. White	1.50 to 2.00
"	The Touraine	P. Archer	2.00 up
"	The Bowser House	R. Flanagan	1.50 to 2.00
Chipman	The Darrel House		
Dalhousie	Inch Arran House	John E. Dean	2.00
Dorchester	Windsor Hotel	W. F. Tait	2.00 up
Evandale	"Evandale"	John O. VanWart	1.50
Fredericton	Queen	J. J. McCaffery	2.00 to 3.00
"	Barker House	T. V. Monohan	2.00 to 3.00
"	Windsor Hall	G. W. McEwin	2.00 to 2.50
"	Long's Hotel	P. D. McKenzie	1.50 to 2.00
Grand Falls	Carlless Hotel	Chas. Carlless	2.00
Grand Manan			
North Head	Whale Cove Farm		
	House	Mrs. S. Thomas	1.00
Grand Manan	The Marathon House	Chas. Peters	1.50
Hampton	Wayside Inn	Mrs. Wm. Langstrath	
Harvey Station	Robison's Hotel	Thos. Robison	1.00
Hillsborough	Prince Albert Hotel	Sherwood & Peck	1.50
Jacquet River	Doyle's Hotel		
Kingston	Mpleridge Lodge	Miss Northrup	1.50
Loch Lomond	Loch Lomond House	Mrs. E. B. Johnston	
Long Reach	"The Cedars"	Mrs. W. B. Ganong	
McAdam	C.P.R. Station Hotel	C. P. R. Co.	2.50
Moncton	American Hotel	Mrs. M. Wallace	2.00 to 2.50
"	Brunswick Hotel	G. McSweeney	2.00 to 2.50
"	Minto	P. Gallagher	2.00
Newcastle	Miramichi Hotel	J. P. Whelan	2.00 to 2.50
Norton	Campbell's Hotel		
Oromocto	Riverside	Mrs. J. E. Stocker	1.50 to 2.00
Port Elgin		T. J. Gorman	
Rochesay	The Kennedy House	Jos. Kennedy	1.50
"	Ilbhurst	T. B. Roberts	1.50
Reel's Point	The Willows		
Riverside	Shepody Hotel	S. Robinson	1.50
St. Andrews	Kennedy's Hotel	A. Kennedy & Son	2.00 up
"	Algonquin	C.P.R., A. Allerton, Mgr	3.00 up
"	The Inn		2.50 up
St. Martins	The Wishart House	E. R. Wishart	1.50
"	The Quaco	G. E. Thomas	2.00
"	The St. Martins Hotel	W. F. Brown	
Shediac	Weldon House	J. D. Weldon	1.50 to 2.00
Shediac Cape	Idlewyld		
St. Stephen	The Windsor Hotel	W. F. Nicholson	2.00 to 2.50
"	Queen Hotel	Mrs. J. Smith	2.00
Sackville	Brunswick Hotel	A. Lesperance	1.50 to 2.00
"	Ford's Hotel	Alex. Ford	2.00 up
Woodstock	Carlisle	Est. C. J. Tabor	2.50 to 3.00

THE CLIFTON

139 - 143 GERMAIN STREET
ST. JOHN, NEW BRUNSWICK



Newly furnished and re-opened under new and capable management. Peerless cuisine. From "The Cupola" a commanding view of the harbor, city and surroundings may be obtained.

RATES \$2.00 TO \$2.50 PER DAY

H. E. GREEN, *Proprietor.*




This Hotel is under new management, has been thoroughly renovated and newly furnished with baths, carpets, linen, silver etc. Passenger elevator. American plan.

VICTORIA HOTEL

87 KING STREET ::: SAINT JOHN, N. B.

A. M. PHILPS, MANAGER



ALGONQUIN HOTEL

ST. ANDREWS-BY-THE-SEA. Reached by the Canadian Pacific Railway. An incomparable retreat. A perfect health resort. Renowned for beautiful scenery. This house has recently been greatly enlarged by the addition of a new fireproof wing. Rates \$3.50 per day and upward with special inducement to those making prolonged stays. BEAUTIFUL SEA BATHING IN WARM WATER FOR CHILDREN AS WELL AS ADULTS. SPLENDID OPPORTUNITIES FOR FISHING, SHOOTING AND BOATING.



THE INN Also at St. Andrews. One of the most charming and the most unique resorts to be found anywhere. Situated close to the ocean side. Rates \$2.50 a day and upward.



THE KENNEDY HOUSE

Rochesay, Kings Co., N. B. Beautifully situated on the Kennebecasis River, nine miles from St. John over the Intercolonial Railway. A charming summer home for those seeking rest and health. Fine boating, bathing and canoeing; beautiful drives and shady walks. Daily mail, telephone and livery. Rate \$1.50 per day and upward. Special rate by the week. Joseph Kennedy, Proprietor.



THE INN, CAMPOBELLO ISLAND, N. B.

In Pasamaquoddy Bay, off Eastport, Maine.

Ten thousand acres of forest, field and shore. Everything the best; sensible homelike cooking, vegetables, cream, milk, poultry, eggs, etc., from our own farms; fish, lobsters and clams from surrounding waters direct to table. Good roads, bridle paths and trails. Golf, tennis, shooting and fish galore. Ideal summer climate, mosquitos a novelty and 97% of hay fever victims are immune here. Casino and ball room, billiards and bowling, cottages and tents. Suitable building and camp sites at reasonable prices. Booklet.

THE CAMPOBELLO CORPORATION,
Campobello, N. B.

11 East 59th St., New York.



THE TOURAINE

New modern hotel, with latest improvements; long distance telephone in every room; lighted throughout with electricity; private baths and beautifully furnished rooms; service and chef best money can procure. Hotel Touraine, Limited, Chatham, N. B.,

Rates: \$2.50 per day upward. P. Archer, Manager.



BEN LOMOND HOUSE

This house is beautifully situated on the shores of Loch Lomond within sight of lofty Ben Lomond. It is fitted with baths and all modern conveniences and makes an ideal resort for the pleasure seeker and sportsman. There are excellent opportunities for trout fishing in season, also large and small game during the hunting season. Bentling and canoeing. Daily mail. Rates per day \$1.50 to \$2.00. Special rates by the week. MRS. S. H. BARKER, Ben Lomond, P. O., St. John Co., N. B.



WELDON HOUSE, SHEDIAC, N. B.

Situated on the Northumberland Strait. Reached by Intercolonial and Canadian Pacific Railway, and by steamer from Prince Edward Island daily. One of the best summer resorts in the Maritime Provinces. Nice shaded grounds, tennis lawns, etc. Sea-bathing and good boating. Nice airy rooms. Trout, bass and mackerel fishing in season. Also during the open game season, moose, deer, partridge, duck and woodcock. Rates per day, \$1.50 to \$2.00. Special rates by the week. Jas. D. Weldon, Proprietor.



HILLHURST HOUSE

Situated eleven and a half miles from St. John, on the Kennebecasis river. Beautiful drives, fine boating, fishing and bathing. No mosquitoes; telephone connection. Comfortable rooms, and every attention given to guests. Reached by Intercolonial to Fairvale Station, or by steamer "Hampton," which gives a beautiful sail up the Kennebecasis river. A tourist resort that is unequalled. Rates per day \$1.50; by the week, \$8.00 to \$7.00. Teams meet all trains and boats. Address T. B. Roberts, Fairvale P. O., Rothesay, Kings Co., N. B.



WHALE COVE FARM HOUSE

An ideal spot for the tourist, with fine opportunities for bathing, driving and fishing. A comfortable farm house with the best of table board and pleasant rooms. Grand Manan is reached by direct steamer "Aurora" weekly from St. John, or by Eastern Steamship Line to Eastport, and thence across by "Aurora." House is situated $\frac{3}{4}$ of a mile from steamer landing. Terms per week, \$5.00 and \$6.00 with reasonable rates for children. For further information, write to Mrs. Stephen Thomas, Whale Cove Farm House, North Head, Grand Manan, N. B.



BONNY RIVER HOUSE

A new, comfortable and well-equipped hotel, 100 yards from the New Brunswick Southern Railway Station at Bonny River. Good livery in connection. Cosy and convenient fishing and hunting lodges at McDougall, Digdeguash and Red Rock Lakes, from two to twelve miles from hotel, at each of which a thoroughly competent man cook is kept during the season. Good boats and canoes at all lakes. Trout fishing in the Magaguadavic Valley region is unexcelled. During the open game season, moose, deer, bear, partridge and woodcock are abundant. Careful and experienced guides furnished. Full outfits for canoeing and tenting trips on Magaguadavic River and connecting streams. Motor boats for trolling on different lakes. Rates at hotel or one of the lodges, \$2.00 per day. For services of guide, with boat or canoe, board included. \$2.50 to \$3.00 per day. Cor. solicited. T. A. Sullivan, Proprietor.



PRINCE ALBERT HOTEL

This house is well situated with a good view. Two minutes walk from Railway Station, and is reached from St. John by Intercolonial Railway to Salisbury, thence Salisbury and Harvey Railway. Livery, pleasant drive, and good trout fishing. Always cool at night. SHERWOOD & PECK Proprietors, Hillsborough, Albert Co., N. B.



INCH ARRAN HOTEL

The fine hotel known as "Inch Arran House" is situated on South West of Bay Chaleur in town of Dalhousie. It contains 142 rooms, large and spacious. Its dining-room can easily accommodate over two hundred persons at a sitting. It is only 480 miles distant from Montreal, and guests can leave there by "Ocean Limited" from I. C. R. station at 7.30 p. m. and arrive at the hotel next morning at 10.20. There are two trains daily to Dalhousie from St. John and Halifax.

The hotel has nearly one-fifth of a mile of verandas, and a fine beach in front. There are beautiful carriage drives through this section of the country, fine sailing on the bay, and within easy reach of good fishing grounds.

Pool and billiard tables and bowling alleys, and lawn tennis grounds, etc., are all here for those who wish amusements.

No place in Canada possesses more attractions for tourists, artists and health-seekers than Dalhousie and its environs.

Mr. John E. Dean, the present proprietor and manager, intends to keep the house open for guests during the months of June, July and August each year, and rates are as low as in the average first-class hotels.

WINDSOR HOTEL.

SAINT STEPHEN, N. B.

The only First Class Hotel in Saint Stephen.

Modern in all its equipments

Golf Links and Tennis Court

First Class Livery in Connection



Centrally Located.

being within Five Minutes walk of the C. P. R. Station and River Plaza.

Electric Cars pass the door to and from Calais and Milltown.

Coaches at all Trains and Boats.

Rates: \$2.00 and \$2.50 per Day.



Special Rates by the Week or Month.

W. FRED NICHOLSON, PROPRIETOR



WILLIAM GRIFFIN & SON, Hunters' and Anglers' Guide. Our camps are situated in the far famed Miramichi Country, one day from railroad. At one camp we have bath tub, hot and cold water and open fire place. We have a good moose, caribou and deer country, none better. We also make a specialty of handling fishing parties, both salmon and trout. If you have a camera, come along, we will give you "modern sport" taking live game pictures. Write for particulars and we will be glad to answer all enquiries and give references from well known sportsmen. Address Cross Creek, York County, New Brunswick.



THREE ISLAND CAMPS MAGAGUADAVIC LAKES.

Three Island Camps on Magaguadavic Lakes; the most beautiful stretch of fresh water in New Brunswick; camps are built of peeled logs, clean and roomy, meals served in dining camps; good trout fishing, canoe trips, and hunting; the latter including duck, snipe, partridge, and all small game, as well as moose; deer and bear; parties are conveyed to and from camps by motor boat; charges reasonable; write for particulars to Adam Moore & Son, Scott's Mills, York Co., N. B.

IN WINTER

Go South
if you will

IN SUMMER

Tourists
Anglers
Yachtsmen
Campers
Canoeists

COME

TO

NEW BRUNSWICK

PLAN YOUR TRIP

VIA

CANADIAN PACIFIC RAILWAY

W. B. HOWARD, D. P. A., C. P. R., ST. JOHN, N. B.



BOSTON & MAINE—MAIME CENTRAL—CANADIAN PACIFIC

T
H
E

ALL RAIL LINE

DIRECT ROUTE BETWEEN

BOSTON — PORTLAND — BANGOR

All Points in New England States

AND

NEW BRUNSWICK—NOVA SCOTIA

PRINCE EDWARD ISLAND

CAPE BRETON and NEWFOUNDLAND

TWO FAST EXPRESSES TRAINS

EACH WAY

EVERY WEEK DAY

Between BOSTON and ST. JOHN, N. B.

ALL

PULLMAN SLEEPERS
AND PARLOR CARS

NEW

C. M. BURTT.

G. P. A., B. & N. RY.
BOSTON, MASS.

WILLIAM STITT,

G. P. A. C. P. RY.
MONTREAL, CAN.

F. E. BOOTHBY,

G. P. A. N. O. RY.
PORTLAND, ME.

There Are Few

places better than the

Maritime Provinces of Canada



New Brunswick, Nova Scotia, P. E. Island
for a Summer Holiday

Surf Bathing on smooth, sandy beaches.
Boating and yachting on ocean, harbours and rivers.
Fishing in sea, rivers and lakes.

There Are Few

countries better served by railways
for the

Intercolonial Railway

has the most modern equipment and gives an
excellent train service.

There Are Few

railway publications better than "Forest, Stream
and Sea Shore." It is a well written book of over
200 pages, beautifully illustrated, and describes
this portion of the Great Dominion of Canada in
much detail and can be obtained by sending ten
cents in stamps to cover postage to

General Passenger Dept.

Intercolonial Railway of Canada

MONCTON, N. B.

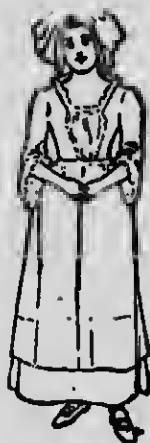
Take your "Lady of the Beeches"
And your rifle and your line

—TO—

Nova Scotia ^A_N^D New Brunswick

THESE NAMES ARE SYNONYMOUS WITH

TROUT
MOOSE WOODCOCK
SALMON



"LAND OF
EVANGELINE ROUTE"

Dominion Atlantic Railway

DOMINION ATLANTIC RAILWAY STEAMSHIP LINES

DIRECT FROM BOSTON

Ask us for information re Clubs, Camps, Hotels,
Lakes, Streams and Meadows, with which these
Sister Provinces abound. Let us engage or put
you in communication with a competent guide.

J. F. MASTERS,

NEW ENGLAND SUPT.
225 WASHINGTON ST.,
BOSTON, MASS.

R. U. PARKER,

GEN. PASS. AGENT,
KENTVILLE,
NOVA SCOTIA.

P. GIFKINS, - GENERAL MANAGER

EASTERN STEAMSHIP COMPANY

THE INTERNATIONAL ROUTE

— BETWEEN —

BOSTON, MASS.

— AND —

PORTLAND, ME.

AND ALL POINTS IN

New Brunswick
Nova Scotia
Prince Edward Island
and Newfoundland

DIRECT SERVICE

THREE TRIPS WEEKLY—JUNE 19TH TO SEPTEMBER 30TH.

COASTWISE SERVICE

THE YEAR ROUND

Steel Steamships: "Calvin Austin," "Governor Cobb,"
"Governor Dingley."

Complete Wireless Telegraph Equipment. Well-lighted and Ventilated
Cabins and Saloons. Spacious Lounging and Promenade Decks. Main
Deck Observation Dining Rooms. Clean, Comfortable, Exclusive
Staterooms. Convenient Writing Decks for Passengers.

Inquire of your nearest Ticket or Tourist Agent, or write to
General Passenger Agent, for Time Tables, Illustrated literature and
complete information concerning Fares, Schedules, Connections,
Hotels, Camps, Guides, Resorts, etc.

CALVIN AUSTIN,

PRESIDENT.

C. C. BROWN,

GENERAL PASSENGER AGENT.

FOSTER'S WHARF, BOSTON, MASS.

The International Railway

NOW OPEN FOR TRAFFIC

Connecting at CAMPBELLTON with the Intercolonial Railway, also with steamers during season of open navigation for various points on the Bay and Gulf, and at ST. LEONARD with the Can. Pacific Ry.

THE Salmon and Trout fishing of the Restigouche River and its branches, rank as the best in the world. A noted sportsman from England, after an experience on this river, declared "It is worth a trip across the Atlantic to catch a salmon on the Restigouche!"

THE woods abound with Moose Caribou, Deer, Partridge and other game: Geese, Brant, Duck, Snipe, etc., are also obtainable in remarkable number, all making it pre-eminently "a happy hunting ground."
Competent guides are always available.

S. T. Wood, in a recent article in the **TORONTO GLOBE**, referring to the construction of the "National Transcontinental" and the "International" Railways, declared that "this opening up of new territory, in any other part of the Dominion, would be celebrated almost as the birth of a nation."

The famous "Bay Chaleur" deserves special notice. Here the finest sea bathing in all America may be enjoyed. The name, signifying Bay of Heat, was applied by the discoverer, Jacques Cartier, in A. D. 1534. It is a remarkable fact that the water in the Bay Chaleur is much warmer than on any part of the Pacific Coast, even down to the boundary between California and Mexico.

N. B.—In the Bay Chaleur there is but little rise and fall of tide, and absolutely NO FOG.

E. H. ANDERSON, MANAGER, A. A. ANDREW, 1RA. VIC MANAGER
CAMPBELLTON, N. B.

R. B. HUMPHREY, FREIGHT AND PASSENGER AGENT,
OFFICE: COR. CANTERBURY AND PRINCESS STREETS, ST. JOHN, N. B.

THE INTERNATIONAL RAILWAY CO. OF NEW BRUNSWICK

THOMAS MALCOLM, GENERAL MANAGER.

— Governed by Atlantic Standard Time. —

Saint John River Steamship Company, Limited

RIVER ST. JOHN

THE SHINE OF AMERICA

Picturesque and Ever Changing Scenery

SAINT JOHN TO FREDERICTON.

SS. "Elaine." Magnificent Steel Steamer, elegantly fitted for Tourist travel, with Observation Parlors and Staterooms.

Leaves Saint John Mondays, Wednesdays and Fridays 8.30 a. m., for Fredericton, returning the alternate days to Saint John, leaving Fredericton at 8 a. m.

FARE \$1.50. RETURN \$2.00.

L. A. CURREY,
PRESIDENT AND MANAGER.

R. KELTIE JONES,
VICE-PRES. AND GEN. MGR.

TELEPHONES:

MANAGER'S OFFICE, ST. JOHN,.....MAIN 702

WAREHOUSE, ST. JOHN,.....MAIN 2076

FREDERICTON OFFICE,.....299

Every Visitor to the Province

SHOULD READ

*Hay's History of
New Brunswick*

A vivid description of its exploration and settlement and of its chief actors, scenes and events.

PRICE 30 CENTS.

Canadian History Readings

An interesting record of the chief events of Canada, written in detail, by some eminent historical writers, including the late Sir John Bourinot, Professor W. F. Ganong, the late Dr. James Hannay, Sir James LeMoine, Dr. W. O. Raymond and others.

PRICE \$1.00.

The most stirring incidents in Canadian history have been selected.—*Montreal Witness.*

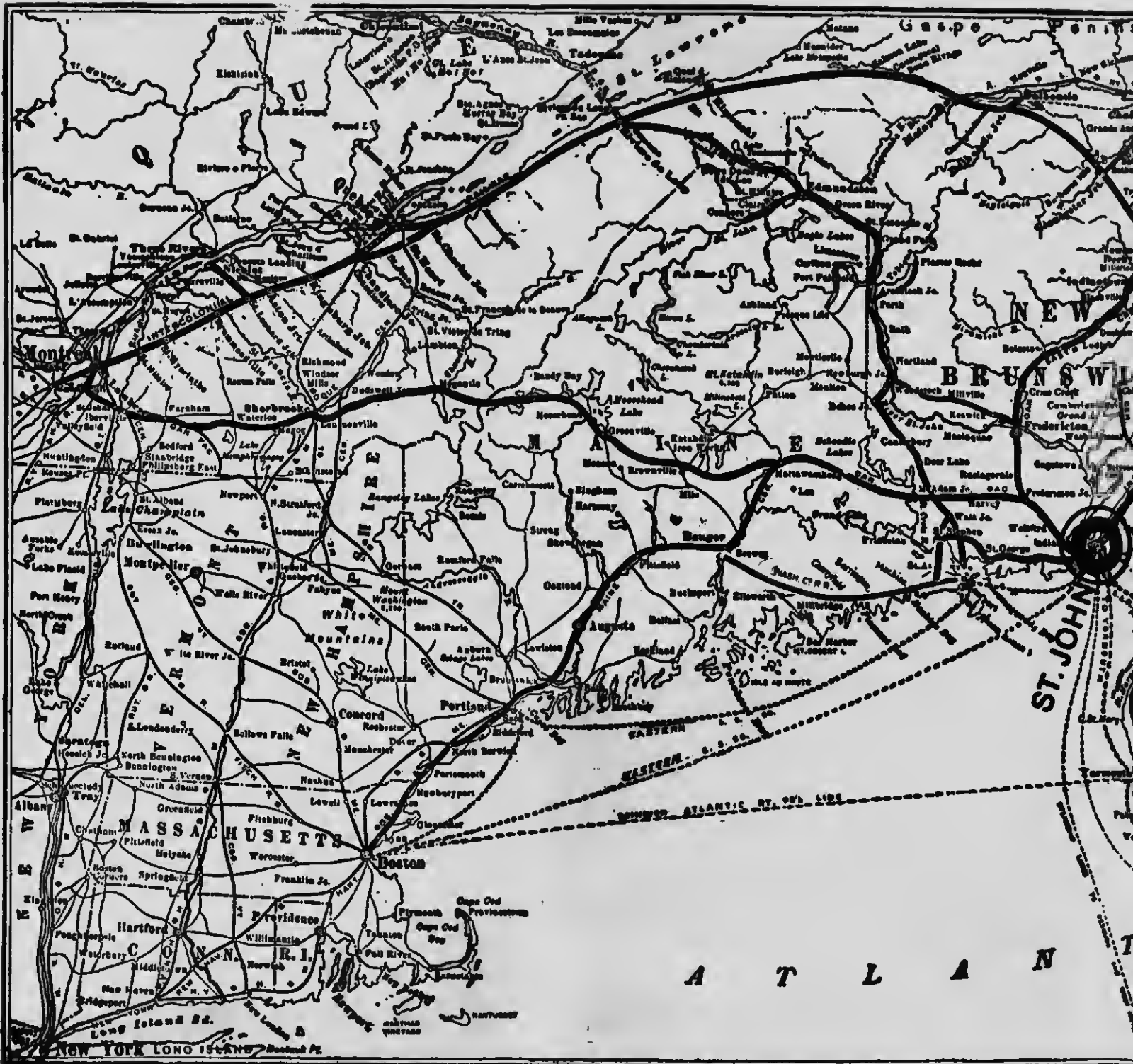
For Sale at the St. John, N. B. Tourist Association

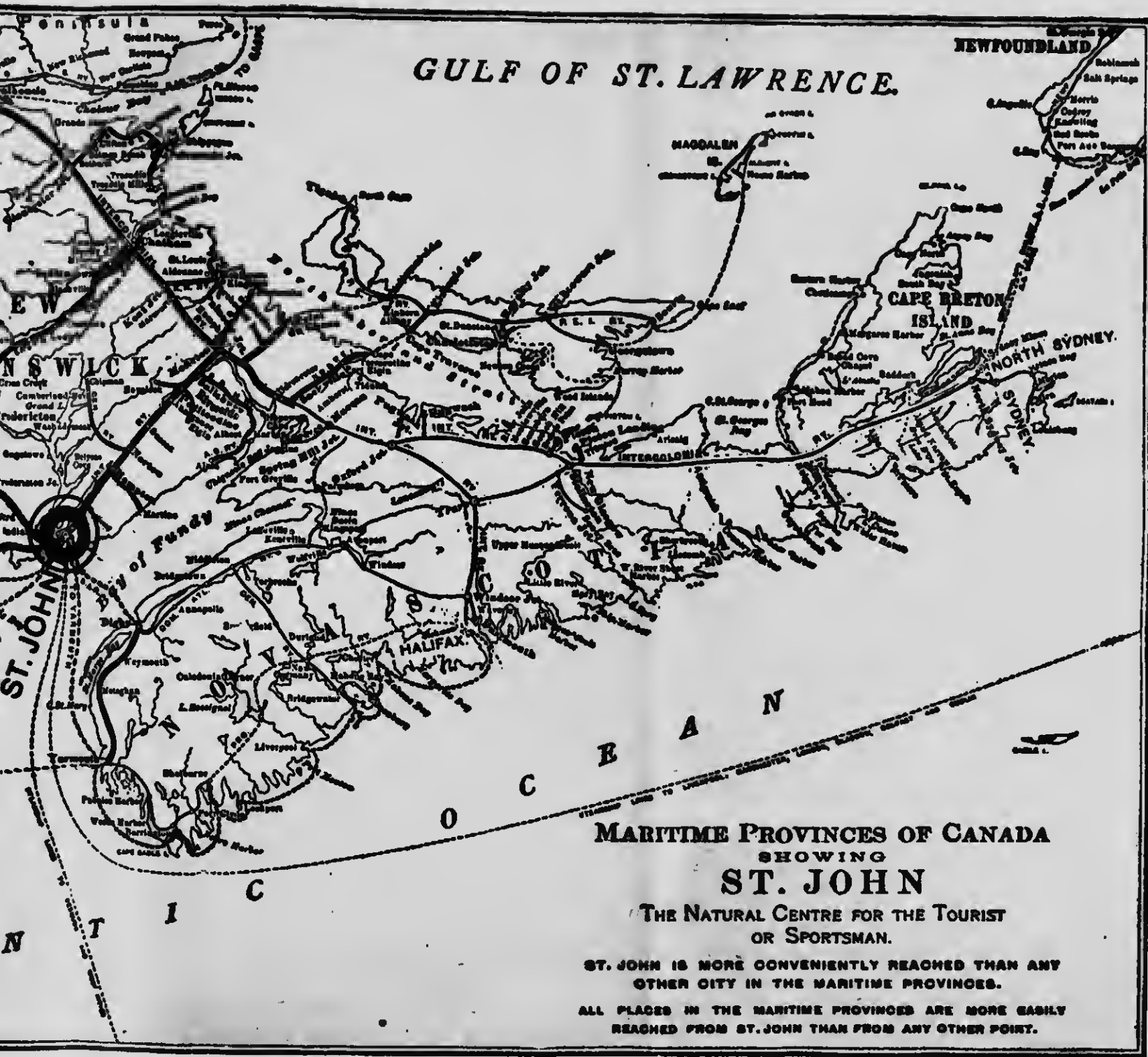


Tourists' Information Bureau, Board of Trade Rooms,
No. 85 Prince Wm. Street, St. John, N. B.

Tourist literature, railway and steamboat folders and time tables can be had on application to the secretary.

Complete list of hotels and boarding houses, both in the city and throughout the province, as well as hunting and fishing resorts, with rates and other information, are kept on file.





GULF OF ST. LAWRENCE.

**MARITIME PROVINCES OF CANADA
SHOWING
ST. JOHN**

**THE NATURAL CENTRE FOR THE TOURIST
OR SPORTSMAN.**

**ST. JOHN IS MORE CONVENIENTLY REACHED THAN ANY
OTHER CITY IN THE MARITIME PROVINCES.
ALL PLACES IN THE MARITIME PROVINCES ARE MORE EASILY
REACHED FROM ST. JOHN THAN FROM ANY OTHER POINT.**

