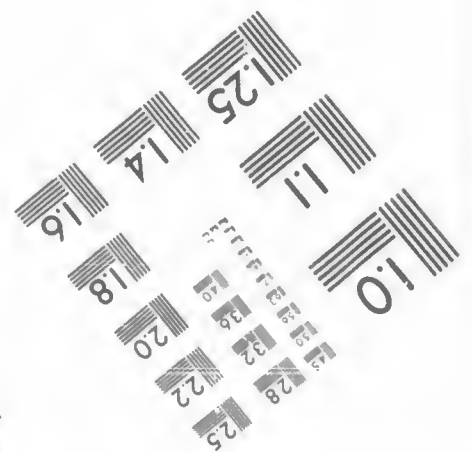
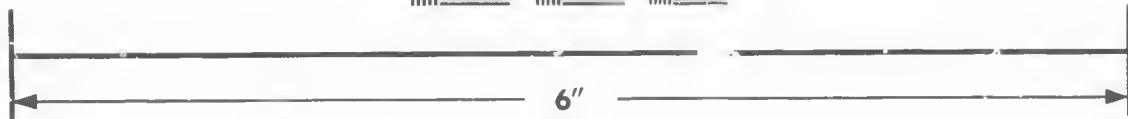
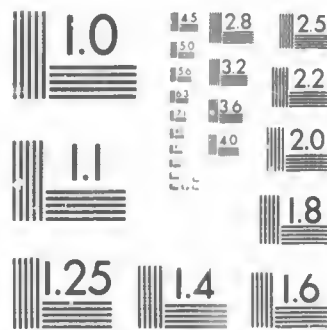


IMAGE EVALUATION
TEST TARGET (MT-3)



Photographic
Sciences
Corporation

23 WEST MAIN STREET
WEBSTER, N.Y. 14590
(716) 872-4503

8 25
22

**CIHM/ICMH
Microfiche
Series.**

**CIHM/ICMH
Collection de
microfiches.**



Canadian Institute for Historical Microreproductions / Institut canadien de microreproductions historiques

01

© 1987

Technical and Bibliographic Notes/Notes techniques et bibliographiques

The Institute has attempted to obtain the best original copy available for filming. Features of this copy which may be bibliographically unique, which may alter any of the images in the reproduction, or which may significantly change the usual method of filming, are checked below.

L'Institut a microfilmé le meilleur exemplaire qu'il lui a été possible de se procurer. Les détails de cet exemplaire qui sont peut-être uniques du point de vue bibliographique, qui peuvent modifier une image reproduite, ou qui peuvent exiger une modification dans la méthode normale de filmage sont indiqués ci-dessous.

- Coloured covers/
Couverture de couleur
- Covers damaged/
Couverture endommagée
- Covers restored and/or laminated/
Couverture restaurée et/ou pelliculée
- Cover title missing/
Le titre de couverture manque
- Coloured maps/
Cartes géographiques en couleur
- Coloured ink (i.e. other than blue or black)/
Encre de couleur (i.e. autre que bleue ou noire)
- Coloured plates and/or illustrations/
Planches et/ou illustrations en couleur
- Bound with other material/
Relié avec d'autres documents
- Tight binding may cause shadows or distortion
along interior margin/
La reliure serrée peut causer de l'ombre ou de la
distorsion le long de la marge intérieure
- Blank leaves added during restoration may
appear within the text. Whenever possible, these
have been omitted from filming/
Il se peut que certaines pages blanches ajoutées
lors d'une restauration apparaissent dans le texte,
mais, lorsque cela était possible, ces pages n'ont
pas été filmées.
- Additional comments: /
Commentaires supplémentaires

- Coloured pages/
Pages de couleur
- Pages damaged/
Pages endommagées
- Pages restored and/or laminated/
Pages restaurées et/ou pelliculées
- Pages discoloured, stained or foxed/
Pages décolorées, tachetées ou piquées
- Pages detached/
Pages détachées
- Showthrough/
Transparence
- Quality of print varies/
Qualité inégale de l'impression
- Includes supplementary material/
Comprend du matériel supplémentaire
- Only edition available/
Seule édition disponible
- Pages wholly or partially obscured by errata
slips, tissues, etc., have been refilmed to
ensure the best possible image/
Les pages totalement ou partiellement
obscurcies par un feuillet d'errata, une pelure,
etc., ont été filmées à nouveau de façon à
obtenir la meilleure image possible.

This item is filmed at the reduction ratio checked below/
Ce document est filmé au taux de réduction indiqué ci-dessous.

10X	14X	18X	22X	25X	30X
<input type="checkbox"/>	<input type="checkbox"/>	<input type="checkbox"/>	<input checked="" type="checkbox"/>	<input type="checkbox"/>	<input type="checkbox"/>
12X	16X	20X	24X	28X	32X

The copy filmed here has been reproduced thanks to the generosity of:

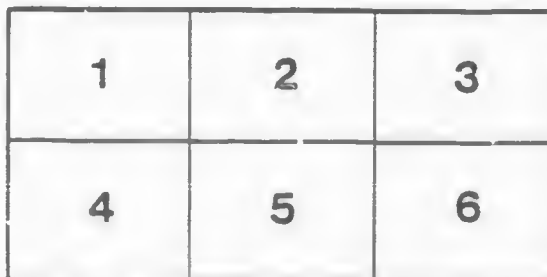
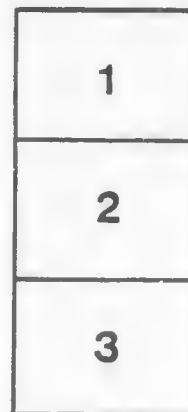
Harold Campbell Vaughan Memorial Library
Acadia University.

The images appearing here are the best quality possible considering the condition and legibility of the original copy and in keeping with the filming contract specifications.

Original copies in printed paper covers are filmed beginning with the front cover and ending on the last page with a printed or illustrated impression, or the back cover when appropriate. All other original copies are filmed beginning on the first page with a printed or illustrated impression, and ending on the last page with a printed or illustrated impression.

The last recorded frame on each microfiche shall contain the symbol \rightarrow (meaning "CONTINUED"), or the symbol ∇ (meaning "END"), whichever applies.

Maps, plates, charts, etc., may be filmed at different reduction ratios. Those too large to be entirely included in one exposure are filmed beginning in the upper left hand corner, left to right and top to bottom, as many frames as required. The following diagrams illustrate the method:



L'exemplaire filmé fut reproduit grâce à la générosité de:

Harold Campbell Vaughan Memorial Library
Acadia University.

Les images suivantes ont été reproduites avec le plus grand soin, compte tenu de la condition et de la netteté de l'exemplaire filmé, et en conformité avec les conditions du contrat de filmage.

Les exemplaires originaux dont la couverture en papier est imprimée sont filmés en commençant par le premier plat et en terminant soit par la dernière page qui comporte une empreinte d'impression ou d'illustration, soit par le second plat, selon le cas. Tous les autres exemplaires originaux sont filmés en commençant par la première page qui comporte une empreinte d'impression ou d'illustration et en terminant par la dernière page qui comporte une telle empreinte.

Un des symboles suivants apparaîtra sur la dernière image de chaque microfiche, selon le cas: le symbole \rightarrow signifie "A SUIVRE", le symbole ∇ signifie "FIN".

Les cartes, planches, tableaux, etc., peuvent être filmés à des taux de réduction différents. Lorsque le document est trop grand pour être reproduit en un seul cliché, il est filmé à partir de l'angle supérieur gauche, de gauche à droite, et de haut en bas, en prenant le nombre d'images nécessaire. Les diagrammes suivants illustrent la méthode.

A 796
013

OTTAWA CANADA WINTER CARNIVAL



OFFICIAL PROGRAMME
AUTHORIZED
BY THE
COMMITTEE.

JANUARY
21ST to 26TH
1895.

A
GV 841
.08
1895
139

DRUMMER & CO. LITH OTTAWA ONT.

VISITORS TO THE CARNIVAL! We recommend you to take the
CANADA ATLANTIC RAILWAY
AND CONNECTIONS.

The shortest and most direct line to the Capital of the Dominion.
Close connections at Rouses Point with the Central Vermont and Delaware & Hudson
From Boston, New York and all New England and New York Points
Solid Trains—Montreal to Ottawa with Pullman Parlor Buffet Cars attached.

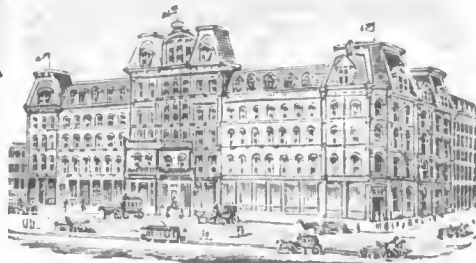
P.S.—Through Wagner Sleeping Cars, New York and Boston to Ottawa without change

The Russell

OTTAWA.

THE

Palace Hotel of Canada.



THIS magnificent new Hotel, fitted up in the most modern style, is now reopened. The Russell contains accommodation for over Four Hundred Guests, with Passenger and Baggage Elevators, and commands a splendid view of the City, Parliamentary Grounds, River and Canal. Visitors to the Capital having business with the Government find it more convenient to stop at the Russell where they can always meet leading public men. The entire Hotel is supplied with escapes, and in case of fire there would not be any confusion or danger. Every attention paid to guests.

F. X. ST. JACQUES, PROPRIETOR.

Carnival of Winter Sports!

At Ottawa, Capital of the Dominion

UNDER THE DISTINGUISHED PATRONAGE OF HIS EXCELLENCY THE GOVERNOR-GENERAL

January 21st to 26th, 1895.

Reduced Rates on all Railroads.

PRINCIPAL FEATURES

Nightly Illuminations of Chaudiere Falls.	Fisheries Exhibit	Promenade Concert
Visit to Parliament Buildings	Drive to Aylmer	Band Competition
Library of Parliament	Lumbermen's Camp	Carnival Ball
Patent Office	Industries of Hull	Ice Trotting Races
National Picture Gallery	Illumination of Parliament Buildings and City	Skating Races
Geological Survey	Ice Castle, Arches, Etc.	Snowshoe Races
		Championship Hockey Matches
		Fancy Dress Carnival

DO NOT FAIL

—TO GET A COPY OF—

The “CITIZEN”

Carnival Number

The Finest Publication of its kind ever issued in Canada

TWO DOUBLE PAGE SUPPLEMENTS

Storming and Burning of Ice Castle.

The Fancy Dress Ball.

Hundreds of Illustrations.

Description of the Carnival.

Canadian Winter Sports.

Short Stories, Etc., Etc.

For Sale at all Newsdealers

PRICE 50 CTS.

First Day—Tuesday, January 21st.

10.00 A.M.—Opening of all Toboggan Slides to the Public.

11.00 A.M.—Skating at Rideau Rink.

2.30 P.M.—Formal Inauguration of the Ice Castle by His Excellency the
Governor-General.

3.00 P.M.—Opening of Bowling Competition at the Ottawa Amateur Athletic
Club.

4.00 P.M.—Manning the Live Arch on Mackenzie Avenue.

8.00 P.M.—Illumination of Chaudiere Falls.

Tobogganing at all Slides.

Sparring Competition, O. A. A. Club.

FOR THE

Ottawa Winter Carnival, Jan. 21st to 26th, '95

THE GRAND TRUNK RAILWAY

Is the favorite and popular route from all points in Canada and the United States. Solid trains, steam-heated and electric-lighted, and with Pullman Buffet Parlor Cars attached, are run between Montreal and Ottawa via Coteau Junction and Canada Atlantic Railway, covering the distance in three and one-half hours.

N. J. POWER,
Gen. Pass. Agent.



G. T. BELL,
Asst. Gen. Pass. Agent.

Through sleeping cars are also run between Toronto and Ottawa, via Brockville, and an additional connection is made via Coteau Jct.

Particulars of reduced fares for the Carnival will be announced later, and full information, maps, time-tables, descriptive advertising, etc., may be had on application to any of the Company's Agents.

L. J. SEARGEANT,
Gen. Manager.

Second Day—Tuesday, January 22nd.

- 9.00 A.M.—Beginning of the Curling Bonspiel, open to the Iron and Stone playing Curling Clubs of the world, at the Local Rinks.
Play continues until 11 p.m.
- 10.00 A.M.—First Match in Military Hockey Series, open to Officers only.
(Dey's Rink).
Skating at all Rinks.
Tobogganing on all Slides.
Opening of the Eastern Ontario Poultry Association.—Open all day.
- 2.00 P.M.—Ice Trotting Races at Lansdowne Park.
- 3.00 P.M.—Children's Fancy Dress Carnival, Rideau Rink.
Continuation of Bowling Competition.
- 5.00 P.M.—Ottawa Hockey Club "At Home," Rideau Rink.
- 7.30 P.M.—Formal Opening and Illumination of the Oshkosh Toboggan Slide.
Skating and Band, Dey's Rink.
Illumination of Ice Castle.
- 8.00 P.M.—Intermediate Championship Hockey Match at Rideau Rink.

◀ BODEGA HOTEL ▶

AND RESTAURANT

(OPPOSITE EAST GATE OF PARLIAMENT BUILDINGS)

EUROPEAN PLAN.

Samuel Simms, - Proprietor.

London Chop House

Steaks, Chops, Oysters—All kinds of Game, etc.
First-class meals to be obtained there at all
hours. Latest Sporting News to be had

FRIENDS AND VISITORS ARE CORDIALLY INVITED.

FRANK SATCHEL, Proprietor.

32 RIDEAU STREET.

NEAR SAPPERS' BRIDGE.

~ THE OTTAWA TATTERSALL ~

Divery, Boarding and Sale Stables

BEST IN THE CITY. SADDLE HORSES A SPECIALTY.

54 Queen Street, - - Ottawa, Ont.

TELEPHONE 518.

C. D. GRAHAM, Prop.

LOUIS BEDARD

TOBACCONIST.

175 Rideau Street, - Ottawa.

Assortment of Tobaccos, Pipes, Cigars and Cigarettes.

Third Day—Wednesday, January 23rd.

- 9.00 A.M.—Continuation (all day) of Curling Bonspiel.
Continuation (all day) of Eastern Ontario Poultry Association.
- 10.00 A.M.—Second Match, Military Hockey Series, Rideau Rink.
Tobogganing at all Slides.
Skating at all Rinks.
- 2.00 P.M.—Ice Trotting Races at Lansdowne Park.
- 3.00 P.M.—Tandem Drive, starting from Parliament Square.
Continuation of Bowling Competition.
- 5.00 P.M.—“At Home,” Rideau Rink.
- 8.00 P.M.—Band Tournament in Drill Hall, open to Military and Citizens’
Bands, including Bands in the United States.
Fancy Dress Carnival at Rideau Rink.

—GET—
PHOTOS

IN WINTER
COSTUME.

**THE BEST
CARNIVAL
SOUVENIR**

FOR **VIEWS**—
OF **OTTAWA**
OR **ANY PHOTOS!**
(If you want best quality)

Go to **JARVIS** 117
Sparks St.

The Ottawa Citizen's Carnival Number

Will surpass anything of the kind ever attempted in Canada.

Double Page Pictures of Storming of Ice Castle and of the Carnival Ball.

OVER 200 ILLUSTRATIONS.

Price 50 cents.

Send Your Orders Now.

For sale at all Newsdealers.

Fourth Day—Thursday, January 24th.

- 9.00 A.M.—Continuation (all day) of Curling Bonspiel.
Continuation (all day) of Eastern Ontario Poultry Association.
Tobogganing at all Slides.
- 2.00 P.M.—Canadian Championship Snowshoe Races at Metropolitan Grounds.
Trotting Races at Lansdowne Park.
Fancy Skating, Canadian Championships, at Rideau Rink.
Final Band Tournament at Drill Hall.
- 3.00 P.M.—Continuation of Bowling Competition.
- 7.30 P.M.—Championship Skating Races and Band, Rideau Rink.
Final Match, Military Hockey Clubs, Dey's Rink
- 8.00 P.M.—National Concert, consisting of National Airs, sung in costume, by
members of various Nationalities, at Opera House.
Allumination of Oshkosh Toboggan Slide.
- 9.00 P.M.—Carnival Ball.

W. BORTHWICK,

IMPORTER
AND
DEALER IN

Foreign and Domestic Fruit

THE PRINCIPAL DEPOT FOR OYSTERS IN EASTERN ONTARIO

Proprietor of the Borthwick Mineral Springs,
the best Saline Mineral Water on this Continent **120 Rideau St.**

THE READER OF THIS AD

Is invited to call upon the

Common Sense Candy Kitchens

To examine their stock and see them manufacture
candy while being waited upon.

The Cheapest, the Purest and the Best only sold.
It is equal to any, superior to most, and excelled by none

OUR PRICES

Best 50 and 60 cent Candy for	25 cents
Best 40 cent Candy for	20 cents
Best 30 cent Candy for	15 cents
Best 25 cent Candy for	10 cents

Don't get name and number confused with others as we
have the only Common Sense Candy Kitchens

204 & 226 Sparks Street, near Bank

W. BORTHWICK,

43 and 45 York Street,

NEAR ICE PALACE

OTTAWA

Proprietor
Alf. Charbonneau,

Choice Wines, Liquors
and Cigars always on hand.
Comfortable Rooms for Boarders

RATES: \$1.00 PER DAY.

W. BORTHWICK

Views of Ottawa

Portraits and Kodaks

132 SPARKS ST.

Fifth Day—Friday, January 25th

- 9.00 A.M.—Continuation (all day) of the Curling Bonspiel.
Concluding day of Eastern Ontario Poultry Association.
- 10.00 A.M.—Skating and Band at Rideau Rink.
Tobogganing at all Slides.
- 2.00 P.M.—Ice Trotting Races at Lansdowne Park.
- 2.30 P.M.—Allegorical Drive, starting from Cartier Square, and Manning of Live Arch by Snowshoers.
- 3.00 P.M.—Continuation of Bowling Competition.
- 7.30 P.M.—Storming of the Ice Castle, and Grand Illumination of whole City.

Sixth and Last Day—Saturday, Jan. 26th

- 9.00 A.M.—Final Ties in Curling Bonspiel.
- 10.00 A.M.—Tobogganing at all Slides.
Skating at all Rinks.
- 3.00 P.M.—Open Snowshoe Steeplechase, starting from Parliament Square
Finals of Bowling Competition.
- 7.30 P.M.—Promenade, Skating and Band Concert at Dey's Rink.
- 8.00 P.M.—Senior League Championship Hockey Match, Ottawa vs. Quebec,
at Rideau Rink.

IF LOOKING FOR
OTTAWA VIEWS

—GO TO—

C. H. THORBURN

BOOKSELLER AND STATIONER.

80 SPARKS STREET.

All the Papers on hand.

...

Latest Books, etc.

The Ottawa Decorative Art Society

55 METCALFE STREET.

Classes in Art Needlework & China Painting

Exhibition and Sale of Art Needlework now going on.—**No charge for Admission.**—Do not leave the city without seeing this beautiful work, some of which took diplomas at the World's Fair.

The Best Place in Ottawa to buy Your
MEDICINES

—AND—

Fancy Toilet Articles

IS AT **R. A. McCORMICK'S**

PRESCRIPTION DRUG STORE.

75 Sparks St.

Phone 159.

• **MEN'S** •
FURNISHINGS
IN GREAT VARIETY, at

Beament & Johnson's

60 SPARKS STREET.

OTTAWA WINTER CARNIVAL

OFFICERS AND COMMITTEES.

PATRON

HIS EXCELLENCY THE GOVERNOR-GENERAL, LORD ABERDEEN.

VICE-PATRONS

Sir John Carling, K.C.M.G.; Hon. Wilfrid Laurier, M.P., and the Mayor of the City of Ottawa.

HON.-PRESIDENTS

Hon. E. H. Bronson, M.P.P.; H. Robillard, M.P.; Geo. O'Keefe, M.P.P.

HON. VICE-PRESIDENTS

Sheriff Sweetland, W. C. Edwards, M.P.; Alderman Champagne, Ex-Alderman S. Bingham.

EXECUTIVE COMMITTEE

PRESIDENT—Sir James Grant, K.C.M.G., M.P.; VICE-PRESIDENTS—E. J. Chamberlin, Jas. Isbester, Wm. Scott; TREASURER—A. B. Brodrick; HON.-SECRETARY—E. C. Grant; ASS'T. SECRETARY—J. J. McLamphy.

Mayor Borthwick, K. Arnoldi, M. M. Pyke, F. W. Carling, R. W. Shannon, W. T. Lawless, M. Quinn, Lt.-Col. Anderson, J. E. Walsh, J. T. Prince, A. A. Dion, J. E. Hutcheson, W. D. Cuthbertson, H. Morrison, E. Belleau, W. C. Young, W. A. Allan, W. Hutchison, T. Ahearne, P. Larmonth, W. Y. Soper, F. X. St. Jacques, B. Slattery, A. Harvey, C. A. Douglas, F. I. Daniels, C. J. Smith, J. W. McRae, J. A. Doyon, F. R. E. Campeau, R. J. Devlin, G. P. Brophy, C. W. Mitchell, C. Ross, D. Murphy, Jos. Boyden, J. Erratt, T. Workman, J. E. Parker, T. Birkett.

COMMITTEES.

Snowshoeing.—W. T. Lawless, Chairman; Jos. H. Bollard, Vice-Chairman; E. A. Olver, Secretary; A. A. Pinard, E. E. Lamieux, S. McCenaghan, J. McDougal, W. Lees, A. Lapierre, L. J. Dion, J. Farue, C. S. Birtch, E. A. Connell, J. C. Scott, E. A. Grant, F. F. Morris, J. M. Hurcombe, W. B. Firth, Dr. Freeland, E. Cope, W. A. Enras, J. O. Leblanc, M. O'Connor, W. D. Visser, Wm. Hutcheson, D. Blyth, G. P. Cairns, J. S. Heinrichs, L. Reinhardt, R. J. Taylor, J. F. Garrow, D. Thoburn, **Military Display.**—Major L. B. C. Bliss, Chairman; Capt. S. M. Rogers, Capt. W. M. McKay, Capt. P. B. Taylor, Capt. Courdeau, Lieut. Eaton, Lieut. Boville, Capt. G. S. Bowie, Secretary.

o—FOR FINE—o

GOLD WATCHES,

Diamond and Sterling Silver Novelties

—GO TO—

A. & A. F. McMillan,

82 SPARKS STREET.

P.S.—Eyes scientifically fitted by a Graduate Optician.

WILLIAM STREET, OTTAWA.

E. G. Laverdure & Co.
HARDWARE

**FOR BUILDERS
SUPPLIES**

**For Founders & Steam Fitters
WILLIAM STREET, OTTAWA.**

The Ottawa Young Women's Christian Association.

The Boarding Department offers the advantages of a refined Christian home.

TERMS—\$2.50 to \$5.00 per week.

The Educational Department furnishes opportunities for improvement in many lines of work, thus encouraging a desire to attain promotion through skilled service.

The Commercial Course consists of Book-keeping, Type Writing and Shorthand.

The Domestic Science Course of classes in cooking, dress cutting, fitting & sewing.

COPIES OF THE SYLLABUS MAY BE HAD ON APPLICATION TO THE

SECRETARY Y. W. C. A., OTTAWA.

COMMITTEES.—Continued.

- Subscription Committee.**—M. M. Pyke, Chairman; M. Quinn, Vice-Chairman; E. C. Grant, Secretary; C. J. Booth, W. D. Morris, Jos. Boyden, H. R. Cluff, B. Slattery, John Davis, F. W. Carling, Geo. St. George, J. Davidson, A. Woodcock, D. O'Connor, jr., F. X. St. Jacques, H. Morrison, C. Scrim, Dr. Parnell, F. I. Daniels, Eb. Browne, C. D. Graham, G. E. Kidd, S. Simms, C. A. Douglas, S. W. Mills, J. M. Quinn, Jas. Fish, E. P. Dey, W. T. Lawless.
- Printing and Advertising.**—J. E. Walsh, Chairman; A. N. Payne, Secretary; J. E. Hutcheson, K. Arnoldi, M. M. Pyke, Eb. Browne, J. E. Parker, E. McMahon, Dr. Parnell, F. W. Carling.
- Construction.**—K. Arnoldi, Chairman; A. R. Macdonald, Secretary; R. Surtees, A. Pratt, E. L. Horwood, H. R. Cluff, John Davis, G. W. Seguin, A. M. Calderon, Thos. A. Shore, G. M. Bayley, M. C. Edey, Thos. Smith.
- Illumination.**—A. A. Dion, Chairman; O. Hignan, Secretary; J. W. McKac, W. Y. Soper, T. Ahearn, A. M. Calderon, J. Coates, W. H. Garrioch, J. C. Glashan, G. Spittal, J. Murphy, J. Johnston, W. G. Bradley, E. A. Grant, W. D. Morris.
- Press Committee.**—R. W. Shannon, Chairman; J. J. Healey, Secretary; C. W. Mitchell, J. D. Grace, J. A. Phillips, A. J. Magurn, W. McKenzie, J. D. McNulty, R. W. Withycomb, Acting Secretary.
- Tobogganing.**—W. D. Cuthbertson, Chairman; H. O. Hewit, Secretary; C. C. Cummings, H. H. Rowatt, A. G. Tache, Robt. Brown, A. G. Pittaway, Henri Roy, J. B. Duford, J. G. Buchanan, J. C. Glashan, D. Rockwell, J. E. Cox, J. McKinley, J. L. Garland, E. F. Holcombe, W. G. Charleson, D. D. Hossack, Chas. McDougal, S. Lelievre, T. Borthwick, P. Hennigan, W. A. Burns, D. E. Johnson, F. Brownell, P. C. Regan.
- Curling.**—Lt. Col. W. P. Anderson, Chairman; Fred. Jones, Secretary; Lt. Col. Irwin, C. S. Scott, Dr. Hutcheson, W. Melnes, John Manuel, W. Stewart, B. Batson.
- Skating and Hockey.**—W. C. Young, Chairman; G. P. Murphy, Secretary; L. C. Pereria, P. M. Grines, R. H. Haycock, A. P. Lew, E. P. Dey, A. R. M. Boulton, J. G. Lay, J. Murphy.
- Driving.**—W. A. Allan, Chairman; A. H. H. Fowell, Secretary; C. J. Smith, T. C. Bate, E. S. Skead, C. Addison, J. W. Pugsley, M. P. Davis, J. Erratt, F. I. Daniels, C. D. Graham, J. F. Kidd, M. D., I. C. Provost, M. D., E. B. Eddy.
- Bowling.**—H. Morrison, Chairman; J. B. Watson, Secretary; Dr. A. W. Harris, W. D. Cuthbertson, Geo. Popham, A. P. Lew, V. Grant.
- Music Committee.**—E. Belleau, Chairman; C. D. Fripp, Secretary; F. A. Dixon, C. Dontigny, C. C. Meyer, F. Breton, J. McGibbon, G. L. Orme, J. H. Lewis, L. E. Ter Meer, Dr. Freeland, C. J. Newman.
- Railway and Transportation.**—J. T. Prince, Chairman; J. E. Hutcheson, Vice-Chairman; Geo. E. Kidd, Sec., J. E. Walsh, A. H. Taylor, J. E. Parker, G. A. Harris, Capt. A. Bowie, J. A. Seybold, J. L. Garland, W. H. Mason, T. M. McKay, C. J. Smith, D. McColl, N. J. Power.
- Accommodation Committee.**—A. Harvey, Chairman; H. Y. Russell, Secretary; M. Quinn, S. Simms, F. Beard, A. E. Bradbury, Jas. McEvoy, Henri Roy, L. C. Panet, N. D. Porter, J. Lawson, W. M. McKay, F. W. Carling, D. E. Johnson, H. Y. Couplin.
- Ball Committee.**—His Worship the Mayor, A. B. Brodrick, E. C. Grant, W. T. Lawless, Plunket B. Taylor, Lt. Col. J. H. Burland, Henri Roy, Capt. F. Gourdeau, E. S. Skead, W. A. Allan, F. W. Avery, C. B. Powell, S. M. Rogers, W. H. Hurdman, W. Y. Soper, W. H. Rowley, S. H. Fleming, T. M. McKay, C. J. Booth, H. A. Bate, E. F. Burritt, L. C. Panet, Julius Lay, J. A. Ritchie, G. P. Murphy, N. O. Cote, Eug. Belleau, Lt.-Col. Hon. M. Aylmer, Lt.-Col. J. Macpherson, A. G. Tache.



GRAND UNION HOTEL.

OPPOSITE City Hall Square, one block from Parliament Buildings, near Post Office and Opera House. Electric Cars pass every few minutes going to all parts of the City and making direct connections with the Railway Stations.

H. ALEXANDER. FREEMAN I. DANIEL.

FOR STYLE, FIT AND FINISH
TRY THE PEOPLE'S TAILORS

THE LARGEST STOCK OF FINE WORSTEDS, SCOTCH TWEEDS, OVERCOATINGS AND FANCY
 ULSTERINGS EVER SHOWN IN CANADA.—Blanket Coats in all the Club Colors.

— DIRECT IMPORTERS —

TRY THE 2 MACS FOR SATISFACTION | Cor. Sparks & Bank Sts.
 Stewart McClenaghan, Proprietor.



IS THE POPULAR ROUTE TO OTTAWA

From All Points East, West, North and South.

30 Trains per day Arrive at and Depart from Ottawa.

Numerous trains in each direction between Ottawa, Toronto, Detroit and all points West, South and South West; Montreal, Quebec, Boston, Portland, Manchester, Lowell, Concord and all New England points. Syracuse, Rome, Utica, Rochester, and Northern New York Points. Almonte, Arnprior, Renfrew, Sault St. Marie, St. Paul, Minneapolis, and points in the North Western States. Winnipeg Vancouver, Victoria, and all points in the Canadian North West and on the Pacific Coast.

FOUR TRAINS PER DAY in each direction between Ottawa and Montreal.

For tickets and information apply to any agent of the Company or the agents of connecting lines.

PRINCIPAL TICKET OFFICES.

OTTAWA, 42 Sparks St.

CHICAGO, 232 South Clark St.

HAMILTON, 8 James St., South.

MONTREAL, 129 St. James St.

BOSTON, 197 Washington St.

ST. JOHN, N.B. Chubb's Corner.

TORONTO, 1 King St. E.

NEW YORK, 353 Broadway.

HALIFAX, N.S., 126 Hollis St.

DETROIT, 11 Fort St.

BUFFALO, 14 Exchange St.

*All
Sensible People
Travel*
by the 



