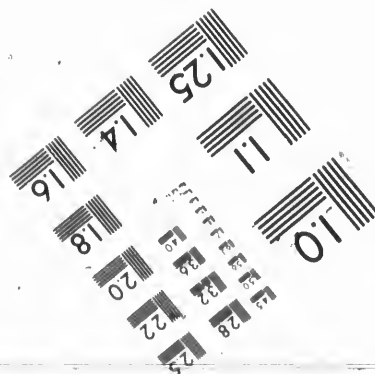
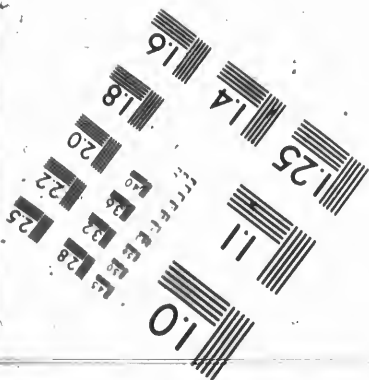
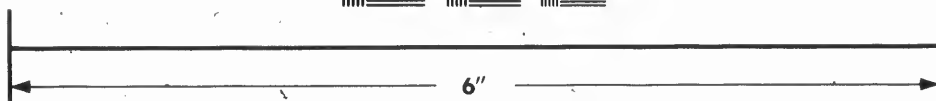
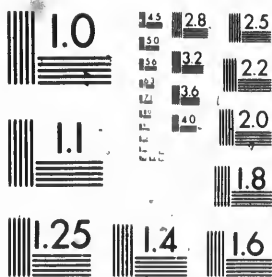


**IMAGE EVALUATION
TEST TARGET (MT-3)**



**Photographic
Sciences
Corporation**

23 WEST MAIN STREET
WEBSTER, N.Y. 14580
(716) 872-4503

**CIHM/ICMH
Microfiche
Series.**

**CIHM/ICMH
Collection de
microfiches.**



Canadian Institute for Historical Microreproductions / Institut canadien de microreproductions historiques

© 1985

Technical and Bibliographic Notes/Notes techniques et bibliographiques

The Institute has attempted to obtain the best original copy available for filming. Features of this copy which may be bibliographically unique, which may alter any of the images in the reproduction, or which may significantly change the usual method of filming, are checked below.

L'Institut a microfilmé le meilleur exemplaire qu'il lui a été possible de se procurer. Les détails de cet exemplaire qui sont peut-être uniques du point de vue bibliographique, qui peuvent modifier une image reproduite, ou qui peuvent exiger une modification dans la méthode normale de filmage sont indiqués ci-dessous.

- | | |
|--|--|
| <input type="checkbox"/> Coloured covers/
Couverture de couleur | <input checked="" type="checkbox"/> Coloured pages/
Pages de couleur |
| <input type="checkbox"/> Covers damaged/
Couverture endommagée | <input checked="" type="checkbox"/> Pages damaged/
Pages endommagées |
| <input type="checkbox"/> Covers restored and/or laminated/
Couverture restaurée et/ou pelliculée | <input type="checkbox"/> Pages restored and/or laminated/
Pages restaurées et/ou pelliculées |
| <input type="checkbox"/> Cover title missing/
Le titre de couverture manque | <input checked="" type="checkbox"/> Pages discoloured, stained or foxed/
Pages décolorées, tachetées ou piquées |
| <input type="checkbox"/> Coloured maps/
Cartes géographiques en couleur | <input type="checkbox"/> Pages detached/
Pages détachées |
| <input type="checkbox"/> Coloured ink (i.e. other than blue or black)/
Encre de couleur (i.e. autre que bleue ou noire) | <input checked="" type="checkbox"/> Showthrough/
Transparence |
| <input type="checkbox"/> Coloured plates and/or illustrations/
Planches et/ou illustrations en couleur | <input type="checkbox"/> Quality of print varies/
Qualité inégale de l'impression |
| <input type="checkbox"/> Bound with other material/
Relié avec d'autres documents | <input type="checkbox"/> Includes supplementary material/
Comprend du matériel supplémentaire |
| <input type="checkbox"/> Tight binding may cause shadows or distortion
along interior margin/
La reliure serrée peut causer de l'ombre ou de la
distorsion le long de la marge intérieure | <input type="checkbox"/> Only edition available/
Seule édition disponible |
| <input type="checkbox"/> Blank leaves added during restoration may
appear within the text. Whenever possible, these
have been omitted from filming/
Il se peut que certaines pages blanches ajoutées
lors d'une restauration apparaissent dans le texte,
mais, lorsque cela était possible, ces pages n'ont
pas été filmées. | <input type="checkbox"/> Pages wholly or partially obscured by errata
slips, tissues, etc., have been refilmed to
ensure the best possible image/
Les pages totalement ou partiellement
obscurcies par un feuillet d'errata, une pelure,
etc., ont été filmées à nouveau de façon à
obtenir la meilleure image possible. |
- Additional comments:/ [Printed ephemera] [4] p.
Commentaires supplémentaires:

This item is filmed at the reduction ratio checked below/
Ce document est filmé au taux de réduction indiqué ci-dessous.

10X	12X	14X	16X	18X	20X	22X	24X	26X	28X	30X	32X
						✓					

The copy filmed here has been reproduced thanks to the generosity of:

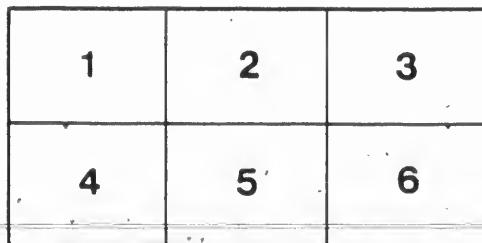
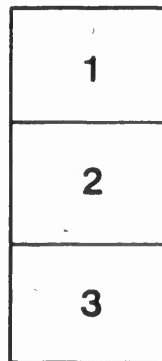
D. B. Weldon Library
University of Western Ontario
(Regional History Room)

The images appearing here are the best quality possible considering the condition and legibility of the original copy and in keeping with the filming contract specifications.

Original copies in printed paper covers are filmed beginning with the front cover and ending on the last page with a printed or illustrated impression, or the back cover when appropriate. All other original copies are filmed beginning on the first page with a printed or illustrated impression, and ending on the last page with a printed or illustrated impression.

The last recorded frame on each microfiche shall contain the symbol \rightarrow (meaning "CONTINUED"), or the symbol ∇ (meaning "END"), whichever applies.

Maps, plates, charts, etc., may be filmed at different reduction ratios. Those too large to be entirely included in one exposure are filmed beginning in the upper left hand corner, left to right and top to bottom, as many frames as required. The following diagrams illustrate the method:



L'exemplaire filmé fut reproduit grâce à la générosité de:

D. B. Weldon Library
University of Western Ontario
(Regional History Room)

Les images suivantes ont été reproduites avec le plus grand soin, compte tenu de la condition et de la netteté de l'exemplaire filmé, et en conformité avec les conditions du contrat de filmage.

Les exemplaires originaux dont la couverture en papier est imprimée sont filmés en commençant par le premier plat et en terminant soit par la dernière page qui comporte une empreinte d'impression ou d'illustration, soit par le second plat, selon le cas. Tous les autres exemplaires originaux sont filmés en commençant par la première page qui comporte une empreinte d'impression ou d'illustration et en terminant par la dernière page qui comporte une telle empreinte.

Un des symboles suivants apparaîtra sur la dernière image de chaque microfiche, selon le cas: le symbole \rightarrow signifie "A SUIVRE", le symbole ∇ signifie "FIN".

Les cartes, planches, tableaux, etc., peuvent être filmés à des taux de réduction différents. Lorsque le document est trop grand pour être reproduit en un seul cliché, il est filmé à partir de l'angle supérieur gauche, de gauche à droite, et de haut en bas, en prenant le nombre d'images nécessaire. Les diagrammes suivants illustrent la méthode.

CATALOGUE

—OF—

Elmwood Stock Farm

5th CON., LONDON TOWNSHIP.

T. D. HODGENS, Proprietor.

1885



“MIDDLESEX”

By Rysdyk's Hambletonian.

(London Free Press.)

"MIDDLESEX."

Sired by Rysdyk's Hambletonian; 1st dam by Fiddler, son of Monmouth Eclipse; 2nd dam Col. Felter's mare, of Newburgh, N. Y., by a son of imported Messenger.

Monmouth Eclipse's 2nd dam was by imp. Messenger, giving Middlesex two direct crosses of Messenger blood through his 1st and 2nd dams, and a cross that has blended well when united with that of Hambletonian.

Middlesex, with a very limited number of mares of no particular breeding, has sired a number of fast and good looking horses, among them Lady Greenwood, record 2.42, at four years; Bell's Pet, 2.40; Sam Rob, Grace Greenwood, Major Brown, Heenen, and Lady Hamilton, all of which have trotted close to 2.40, being used altogether as road horses and never had regular training. Mr. Willis A. Jones, of Huntington, Indiana, writes me that he has a daughter of Middlesex that has shown him several trials better than 2.30, but meeting with an accident, he put her to breeding.

APPOINTMENTS.

London—Western Hotel, Saturday, and to 9 o'clock a m. on Monday.

Glanworth—Monday, at noon.

Belmont—Monday evening, until 9 a. m. Tuesday.

Nilestown—Tuesday, noon.

London—Tuesday evening and until 9 a. m. Wednesday.

Ballymote—Wednesday, noon.

Bryanston—Wednesday evening, until 9 a.m. Thursday.

Birr—Thursday, noon.

Ilderton—Thursday evening, and until 9 a. m. Friday, and continue during the season, commencing Saturday, April 25th, and ending Saturday, June 27th, health and weather permitting.

TERMS FOR "MIDDLESEX."

To insure that a mare gets with foal, \$20 ; season (cash before service), \$15. Mares on insurance must be returned regularly for trial during the season, otherwise they must be paid for as season mares. Insured mares payable 1st February, 1886. All accidents and escapes at owner's risk. Good pasture will be found for mares sent to this horse at \$3 per month.

"ALBION."

RECORD, 2.33½.

Sired by Highland Boy, he by Hamlet, he by Volunteer, he by Hambletonian. Dam, Lady Martin, by Whitbeck's Black Hawk.

REMARKS.

Albion, ch. h., nearly 16 hands high, and of very strong muscular form. His colts, though yet too young to be developed, are showing a great amount of speed, and those that have been exhibited in the Shows throughout the county have been prize winners in their class nearly always when shown.

Albion travels the same route as Middlesex, and same time. TERMS : \$15.00 to insure that a mare gets with foal. Other conditions same as Middlesex.

"SUPERIOR."

STANDARD. No. 3780.

Superior, br. h. 15½ hand; high six years old; sired by Woods' Hambletonian; 1st dam, ^{Mag Borden} Mag Borden, record 2.45, by American Star Jr.; 2nd dam by Long Island.

NOTE.—Superior is a dark bay or brown, two white heels behind, one front foot white; a fast and reliable trotter.

"EDSALL STAR."

STANDARD. No. 3781.

A chestnut horse, coming 6 years, was sired by Major Edsall, the sire of that great stallion Robert McGregor (record 2.17½, made in 1883); dam Lady S, by Niver's American Star; grand dam by Long Island.

REMARKS.

Edsall Star is a very strong mover and fast trotter. I look for this horse to sire speedy colts. The few that he has sired are very superior in every way, considering the mares that were bred to him.

Superior and Edsall Star stand at their owner's private stables, London.

Terms.—\$25.00; to insure that a mare gets with foal; other conditions same as Middlesex.

CHAS. LACKEY,

Manager.

T. D. HODGENS,

Proprietor.

*Woods' Hambletonian did
about April 1888*

