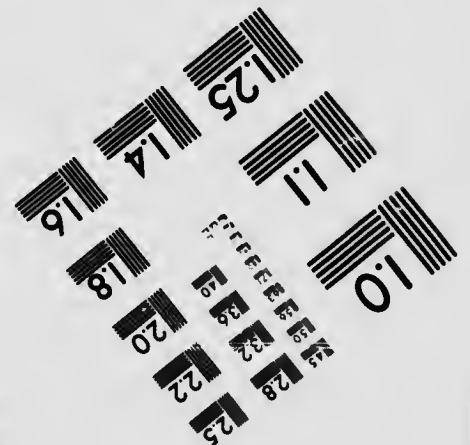
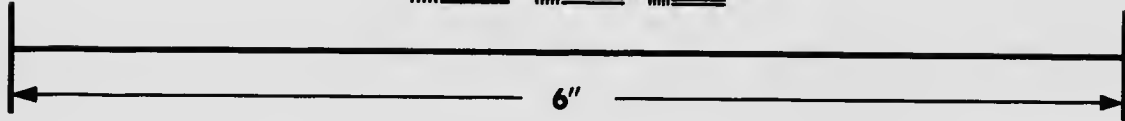
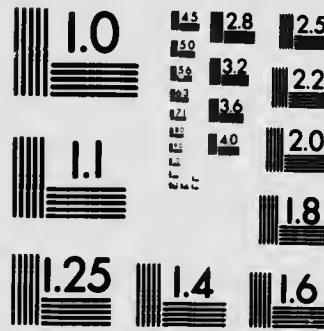


**IMAGE EVALUATION
TEST TARGET (MT-3)**



**Photographic
Sciences
Corporation**

23 WEST MAIN STREET
WEBSTER, N.Y. 14580
(716) 872-4503

28 25
22

**CIHM
Microfiche
Series
(Monographs)**

**ICMH
Collection de
microfiches
(monographies)**



Canadian Institute for Historical Microreproductions / Institut canadien de microreproductions historiques

© 1992

Technical and Bibliographic Notes / Notes techniques et bibliographiques

The Institute has attempted to obtain the best original copy available for filming. Features of this copy which may be bibliographically unique, which may alter any of the images in the reproduction, or which may significantly change the usual method of filming, are checked below.

L'Institut a microfilmé le meilleur exemplaire qu'il lui a été possible de se procurer. Les détails de cet exemplaire qui sont peut-être uniques du point de vue bibliographique, qui peuvent modifier une image reproduite, ou qui peuvent exiger une modification dans la méthode normale de filmage sont indiqués ci-dessous.

- Coloured covers/
Couverture de couleur
- Covers damaged/
Couverture endommagée
- Covers restored and/or laminated/
Couverture restaurée et/ou pelliculée
- Cover title missing/
Le titre de couverture manque
- Coloured maps/
Cartes géographiques en couleur
- Coloured ink (i.e. other than blue or black)/
Encre de couleur (i.e. autre que bleue ou noire)
- Coloured plates and/or illustrations/
Planches et/ou illustrations en couleur
- Bound with other material/
Relié avec d'autres documents
- Tight binding may cause shadows or distortion along interior margin/
La reliure serrée peut causer de l'ombre ou de la distorsion le long de la marge intérieure
- Blank leaves added during restoration may appear within the text. Whenever possible, these have been omitted from filming/
Il se peut que certaines pages blanches ajoutées lors d'une restauration apparaissent dans le texte, mais, lorsque cela était possible, ces pages n'ont pas été filmées.

- Coloured pages/
Pages de couleur
- Pages damaged/
Pages endommagées
- Pages restored and/or laminated/
Pages restaurées et/ou pelliculées
- Pages discoloured, stained or foxed/
Pages décolorées, tachetées ou piquées
- Pages detached/
Pages détachées
- Showthrough/
Transparence
- Quality of print varies/
Qualité inégale de l'impression
- Continuous pagination/
Pagination continue
- Includes index(es)/
Comprend un (des) index

Title on header taken from: /
Le titre de l'en-tête provient:

- Title page of issue/
Page de titre de la livraison
- Caption of issue/
Titre de départ de la livraison
- Masthead/
Générique (périodiques) de la livraison

- Additional comments: /
Commentaires supplémentaires:

This item is filmed at the reduction ratio checked below/
Ce document est filmé au taux de réduction indiqué ci-dessous.

10X	14X	18X	22X	26X	30X
<input type="checkbox"/>	<input type="checkbox"/>	<input type="checkbox"/>	<input checked="" type="checkbox"/>	<input type="checkbox"/>	<input type="checkbox"/>
12X	16X	20X	24X	28X	32X

The copy filmed here has been reproduced thanks to the generosity of:

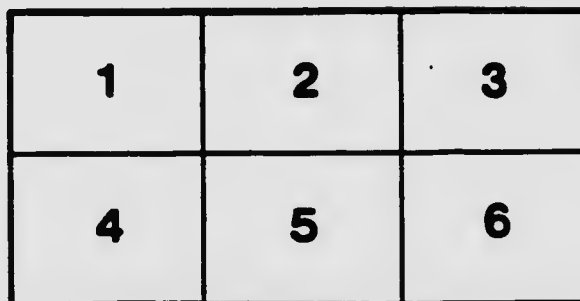
Library of the National
Archives of Canada

The images appearing here are the best quality possible considering the condition and legibility of the original copy and in keeping with the filming contract specifications.

Original copies in printed paper covers are filmed beginning with the front cover and ending on the last page with a printed or illustrated impression, or the back cover when appropriate. All other original copies are filmed beginning on the first page with a printed or illustrated impression, and ending on the last page with a printed or illustrated impression.

The last recorded frame on each microfiche shall contain the symbol \rightarrow (meaning "CONTINUED"), or the symbol ∇ (meaning "END"), whichever applies.

Maps, plates, charts, etc., may be filmed at different reduction ratios. Those too large to be entirely included in one exposure are filmed beginning in the upper left hand corner, left to right and top to bottom, as many frames as required. The following diagrams illustrate the method:



L'exemplaire filmé fut reproduit grâce à la générosité de:

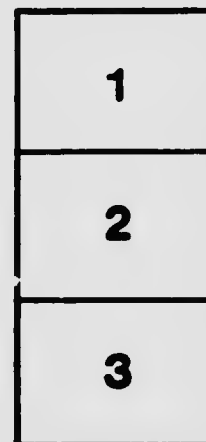
La bibliothèque des Archives
nationales du Canada

Les images suivantes ont été reproduites avec le plus grand soin, compte tenu de la condition et de la netteté de l'exemplaire filmé, et en conformité avec les conditions du contrat de filmage.

Les exemplaires originaux dont la couverture en papier est imprimée sont filmés en commençant par le premier plat et en terminant soit par la dernière page qui comporte une empreinte d'impression ou d'illustration, soit par le second plat, selon le cas. Tous les autres exemplaires originaux sont filmés en commençant par la première page qui comporte une empreinte d'impression ou d'illustration et en terminant par la dernière page qui comporte une telle empreinte.

Un des symboles suivants apparaîtra sur la dernière image de chaque microfiche, selon le cas: le symbole \rightarrow signifie "A SUIVRE", le symbole ∇ signifie "FIN".

Les cartes, planches, tableaux, etc., peuvent être filmés à des taux de réduction différents. Lorsque le document est trop grand pour être reproduit en un seul cliché, il est filmé à partir de l'angle supérieur gauche, de gauche à droite, et de haut en bas, en prenant le nombre d'images nécessaire. Les diagrammes suivants illustrent la méthode.





A. D. COLQUHOUN
Boiler Cleanser Company

ST. MARYS, ONT.

*It Works
While
You Sleep.*

Represented by

A Few Words to Steam Users

Regarding Scale in Boilers, and the Remedy.

No person knows better the extra amount of fuel required between a badly scaled boiler and a clean one than a fireman who has changed from a clean boiler to a dirty one. Experts claim that $\frac{1}{16}$ of an inch of scale causes a loss of 12% of heat, and $\frac{1}{4}$ of an inch 40%, and with thicker scale it is still worse. Added to this, the scale separates the plate at the bottom of the boiler from the cooling influence of the water, and the very high temperatures produced causes blistering of the iron, loosening of the rivets, and burning out of the boiler bottom; causing both expense and loss of time, and in many cases explosions and loss of life. These are very serious blemishes on the fair fame of our steam boilers, but it has already been proved to the satisfaction of many steam users (a few of whose testimony is herewith given) that with our *Cleanser* these difficulties can be overcome—not partially, as some boiler compound manufacturers claim—but completely. No matter how thick the scale, we can remove it, and in the case of a new boiler scale will never form if our *Cleanser* is used according to directions. We positively guarantee that it contains no harmful ingredients of any kind, and prevents pitting and corrosion both of boilers and fittings. Many other compounds induce foaming—with our *Cleanser* it has never been known to occur.

It must not be thought that irregular use, both as to time and quantity, will produce results. It will not. An engine oiled one day, and not the next, will soon be on the junk pile. No greater item of expense finds its way into the office books than that caused by a dirty boiler. A clean boiler producing maximum power at a minimum expense is only secured by careful attention to inside conditions. The time required to remove all scale from a boiler is usually from two to three months, according to quality of water used.

Testimonials.

UNEQUALLED BY ANYTHING.

St. Marys, March 7th, 1906.

After submitting your boiler *Cleanser* to a most severe test, we find it to be unequalled by anything in our experience for removing scale and for preserving the boilers in a good, healthy condition. When we first commenced using your *Cleanser*, three years ago, our old boiler had in some places scale half an inch in thickness, and a heavy coating over the tubes, due to the water we are using, containing a heavy deposit of lime. We also find that it does not injure the brasses in any way, causing them to leak or pit the steel, as other articles we have used have done. After using other compounds and purges, we have no hesitation in recommending your *Cleanser* as the best we have used.

Wishing you every success,

We are, yours truly,

THE HORSE SHOE QUARRY CO., LIMITED.

SAVED ONE CORD OF WOOD PER DAY.

Granton, April 16th, 1906.

DEAR SIR,—This is to certify that I have used your *Cleanser* in my 40 and 80 horse-power boilers, which were heavily scaled; in fact, I used a rapping machine on my small boiler, which took off about 300 lbs. of scale from the flues only, and it loosened nearly all of them. But since using your *Cleanser* it has removed all scale from the shell, heads and flues, without any harm to boilers or fittings. My experience with other compounds was very unsatisfactory, as they all injured the boilers. And I also wish to state that since using your *Cleanser* I am saving in fuel about one cord of wood per day.

Yours truly,

ABNER LANGFORD.

Testimonials.



IT DGN'T FOAM NOW.

St. Marys, Feb. 12th, 1907.

This is to certify that I have been using your *Cleanser* during the past season, and it has given the very best of satisfaction. It brought off the scale so fast that I had to clean out the boiler every week for a few weeks after first using it. I have tried other compounds, and they made my boiler foam so bad I had to quit their use. With your *Cleanser* I have not seen the slightest indications of foaming. I wish also to say it is a great fuel saver and boiler preserver.

JOHN WOOD.

HIGHLY RECOMMENDS IT.

Granton, Feb. 13.

Having used your boiler *Cleanser* in my traction engine during the past season, I can highly recommend it to all steam users, as it has given me the best of satisfaction. I find by experience that your *Cleanser*, when used regularly and at short intervals, say every two weeks on the start, gives much better satisfaction than by irregular use, and can highly recommend it to all steam users.

ROBERT KNOWLES.

GOOD ADVICE.

This is to certify that I have been engineer for Mr. A. Langford for the past five years, and can highly recommend the A. D. Colquhoun boiler *Cleanser*. Since using the same the work of firing has been practically cut in two, in fact we are using one cord of wood less per day since using this *Cleanser*. My advice to any steam user troubled with scale is use this *Cleanser*.

EDGAR LANGFORD.

