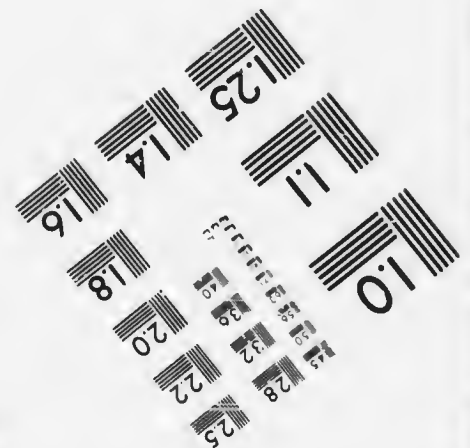
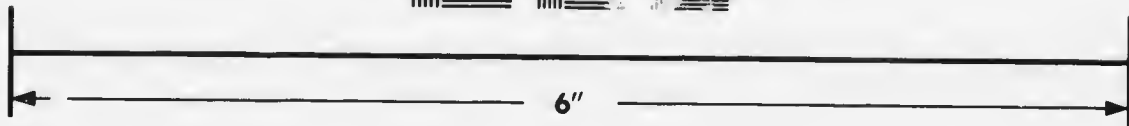
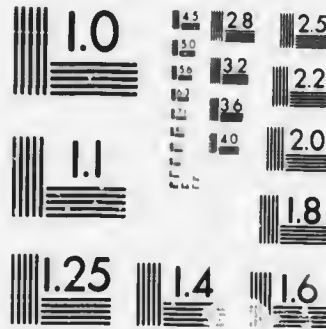


**IMAGE EVALUATION
TEST TARGET (MT-3)**



**Photographic
Sciences
Corporation**

23 WEST MAIN STREET
WEBSTER, N.Y. 14580
(716) 872-4503

**CIHM/ICMH
Microfiche
Series.**

**CIHM/ICMH
Collection de
microfiches.**



Canadian Institute for Historical Microreproductions / Institut canadien de microreproductions historiques

© 1987

Technical and Bibliographic Notes/Notes techniques et bibliographiques

The Institute has attempted to obtain the best original copy available for filming. Features of this copy which may be bibliographically unique, which may alter any of the images in the reproduction, or which may significantly change the usual method of filming, are checked below.

L'Institut a microfilmé le meilleur exemplaire qu'il lui a été possible de se procurer. Les détails de cet exemplaire qui sont peut-être uniques du point de vue bibliographique, qui peuvent modifier une image reproduite, ou qui peuvent exiger une modification dans la méthode normale de filmage sont indiqués ci-dessous.

- | | |
|---|---|
| <input checked="" type="checkbox"/> Coloured covers/
Couverture de couleur | <input type="checkbox"/> Coloured pages/
Pages de couleur |
| <input type="checkbox"/> Covers damaged/
Couverture endommagée | <input type="checkbox"/> Pages damaged/
Pages endommagées |
| <input type="checkbox"/> Covers restored and/or laminated/
Couverture restaurée et/ou pelliculée | <input type="checkbox"/> Pages restored and/or laminated/
Pages restaurées et/ou pelliculées |
| <input type="checkbox"/> Cover title missing/
Le titre de couverture manque | <input checked="" type="checkbox"/> Pages discoloured, stained or foxed/
Pages décolorées, tachetées ou piquées |
| <input checked="" type="checkbox"/> Coloured maps/
Cartes géographiques en couleur | <input type="checkbox"/> Pages detached/
Pages détachées |
| <input type="checkbox"/> Coloured ink (i.e. other than blue or black)/
Encre de couleur (i.e. autre que bleue ou noire) | <input checked="" type="checkbox"/> Showthrough/
Transparence |
| <input type="checkbox"/> Coloured plates and/or illustrations/
Planches et/ou illustrations en couleur | <input type="checkbox"/> Quality of print varies/
Qualité inégale de l'impression |
| <input type="checkbox"/> Bound with other material/
Relié avec d'autres documents | <input type="checkbox"/> Includes supplementary material/
Comprend du matériel supplémentaire |
| <input type="checkbox"/> Tight binding may cause shadows or distortion along interior margin/
La reliure serrée peut causer de l'ombre ou de la distorsion le long de la marge intérieure | <input type="checkbox"/> Only edition available/
Seule édition disponible |
| <input type="checkbox"/> Blank leaves added during restoration may appear within the text. Whenever possible, these have been omitted from filming/
Il se peut que certaines pages blanches ajoutées lors d'une restauration apparaissent dans le texte, mais, lorsque cela était possible, ces pages n'ont pas été filmées. | <input type="checkbox"/> Pages wholly or partially obscured by errata slips, tissues, etc., have been refilmed to ensure the best possible image/
Les pages totalement ou partiellement obscurcies par un feuillet d'errata, une pelure, etc., ont été filmées à nouveau de façon à obtenir la meilleure image possible. |
| <input type="checkbox"/> Additional comments:
Commentaires supplémentaires: | |

This item is filmed at the reduction ratio checked below/
Ce document est filmé au taux de réduction indiqué ci-dessous.

10X	14X	18X	22X	26X	30X
<input type="checkbox"/>	<input type="checkbox"/>	<input type="checkbox"/>	<input checked="" type="checkbox"/>	<input type="checkbox"/>	<input type="checkbox"/>
12X	16X	20X	24X	28X	32X

The copy filmed here has been reproduced thanks to the generosity of:

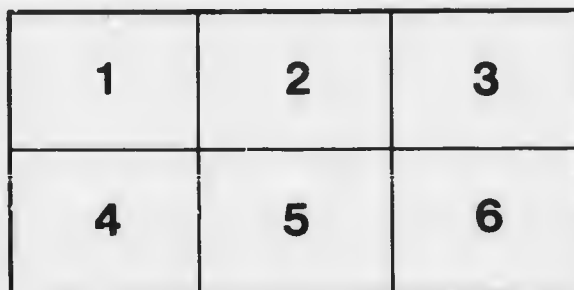
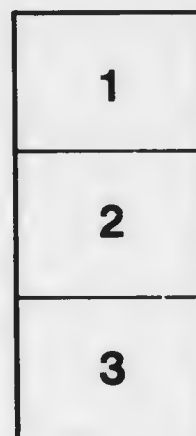
Douglas Library
Queen's University

The images appearing here are the best quality possible considering the condition and legibility of the original copy and in keeping with the filming contract specifications.

Original copies in printed paper covers are filmed beginning with the front cover and ending on the last page with a printed or illustrated impression, or the back cover when appropriate. All other original copies are filmed beginning on the first page with a printed or illustrated impression, and ending on the last page with a printed or illustrated impression.

The last recorded frame on each microfiche shall contain the symbol \rightarrow (meaning "CONTINUED"), or the symbol ∇ (meaning "END"), whichever applies.

Maps, plates, charts, etc., may be filmed at different reduction ratios. Those too large to be entirely included in one exposure are filmed beginning in the upper left hand corner, left to right and top to bottom, as many frames as required. The following diagrams illustrate the method:



L'exemplaire filmé fut reproduit grâce à la générosité de:

Douglas Library
Queen's University

Les images suivantes ont été reproduites avec le plus grand soin, compte tenu de la condition et de la netteté de l'exemplaire filmé, et en conformité avec les conditions du contrat de filmage.

Les exemplaires originaux dont la couverture en papier est imprimée sont filmés en commençant par le premier plat et en terminant soit par la dernière page qui comporte une empreinte d'impression ou d'illustration, soit par le second plat, selon le cas. Tous les autres exemplaires originaux sont filmés en commençant par la première page qui comporte une empreinte d'impression ou d'illustration et en terminant par la dernière page qui comporte une telle empreinte.

Un des symboles suivants apparaîtra sur la dernière image de chaque microfiche, selon le cas: le symbole \rightarrow signifie "A SUIVRE", le symbole ∇ signifie "FIN".

Les cartes, planches, tableaux, etc., peuvent être filmés à des taux de réduction différents. Lorsque le document est trop grand pour être reproduit en un seul cliché, il est filmé à partir de l'angle supérieur gauche, de gauche à droite, et de haut en bas, en prenant le nombre d'images nécessaire. Les diagrammes suivants illustrent la méthode.

1884-1885

RAND, McNALLY & CO'S

INDEXED COUNTY MAP

SHIPPERS' GUIDE

ONTARIO

Published by Rand, McNally & Co., 111 North Dearborn Street, Chicago, Ill.

ENTIRE RAILROAD SYSTEM

with the names of the companies, and the names of the stations.

CITIES, TOWNS, POST OFFICES,

RAILROAD STATIONS, VILLAGES, CITIES,

ISLANDS, LAKES, RIVERS, ETC.

THE SPECIAL FEATURES

of this edition include: A complete list of the names of the cities, towns, and villages of Ontario, with their respective postal addresses; a list of the names of the cities, towns, and villages of Ontario, with their respective postal addresses; a list of the names of the cities, towns, and villages of Ontario, with their respective postal addresses.

Published by Rand, McNally & Co., 111 North Dearborn Street, Chicago, Ill.

RAND, McNALLY & CO.

111 North Dearborn Street, Chicago, Ill.

RAND, McNALLY & CO.'S MAP PUBLICATIONS.

Rand, McNally & Co.'s Business Atlas. Price, \$15.00 in cloth, \$18.00 in half morocco.

Containing large scale maps of each State and Territory of the United States, the provinces of Canada, West India Islands, Mexico, Central America, Cuba, etc., etc., together with a complete reference map of the World, printed in colors from plates secured by letters patent, producing the clearest typographical effect of any known engraved plates, accompanied by a new and original compilation and ready reference index, showing in detail the entire Railroad System of North America, the Express Company doing business over each road, and accurately locating Counties, Parishes, Islands, Lakes, Rivers, Mountains, etc., etc., together with all Post Offices, Railroad Stations and Villages in the United States and Canada, with latest official census or estimated population of each. 480 pages.

Rand, McNally & Co.'s Indexed Atlas of the World.

It contains 905 pages of new maps, printed matter, and unique attractions. It includes large scale maps of every civil division of the Globe. Each map is accompanied by a *ready reference index* whereby any place can be instantly found and its population ascertained, together with its mail and railway accessibility. The map of each State and Country is preceded by printed matter, historical, statistical and descriptive, relative thereto; and the entire volume is illustrated with hundreds of colored diagrams showing impressively the most important subjects which admit of being presented by *comparative size*. It is a work for the Family or Office. Sold only by subscription.

Rand, McNally & Co.'s New Indexed Atlas of the Northwestern, Western and Southwestern States, bound in cloth, Price, \$7.50. (A part of Complete Business Atlas mentioned above.)

Rand, McNally & Co.'s New Railroad and County Map of the United States and Canada, mounted upon cloth, with rollers top and bottom, \$15.00; or rollers at each end, "Panorama Mounting," accommodating itself to any required space, \$16.00.

Compiled from the latest Government surveys, and drawn to an accurate scale—size, 100 x 58 inches; scale, 32 miles to one inch; borders of States and Counties beautifully tinted, colors being printed from plates secured by letters patent. This work has occupied two years in compilation and engraving, at a cost of nearly \$20,000; plates have been carefully corrected to date, presenting the finest work of Art of its kind. This Map is deserving of special mention as being the first map of the United States made upon a geometrical projection since the war.

Rand, McNally & Co.'s New Railroad and County Map, extending from the Atlantic Coast to Great Salt Lake, size 80 x 58 inches, in colors, mounted upon heavy paper, rollers top and bottom (a section of our complete United States work), a map for the people, at a popular price. Retail, \$5.00.

Rand, McNally & Co.'s New Railroad and County Map of the Territories and Pacific Coast, 60 x 58 inches, in colors, mounted upon heavy paper, rollers top and bottom (a section of our complete United States work). Retail, \$5.00.

Rand, McNally & Co.'s New Township, County and Railroad Map of the Northwest. Price, \$2.00.

Size 58 x 42 inches; extends from the eastern boundary of Ohio, west to the Rocky Mountains; and from the southern boundary of Missouri north to Manitoba. Shows all *Railroads in red*. Mounted on rollers top and bottom.

Rand, McNally & Co.'s New Official Railroad Map of the United States and Canada, mounted on rollers, size 58 x 42 inches. Price, \$1.50.

Rand, McNally & Co.'s Reversible Map of the Northwest and the United States; combines the two preceding Maps. Price, \$3.00.

Rand, McNally & Co.'s New Railroad and County Map of the Northeastern States, with parts of Ontario and Quebec, size 40 x 42 inches; scale, 17 miles to one inch; mounted upon heavy paper, rollers top and bottom. Price, \$2.00.

This Map includes all of the New England States, New York, New Jersey, Pennsylvania, Maryland, Delaware, Quebec and Ontario.

A Full Line of Maps of Foreign Countries and Cities kept in stock. Send for Descriptive Catalogue.

RAND, McNALLY & CO.'S

INDEXED COUNTY MAP

AND SHIPPERS' GUIDE OF

ONTARIO

ACCOMPANIED BY A NEW AND ORIGINAL COMPILATION AND READY
REFERENCE INDEX, SHOWING IN DETAIL THE

ENTIRE RAILROAD SYSTEM.

The Express Company doing business over each Road,

AND ACCURATELY LOCATING ALL CITIES, TOWNS, POST OFFICES, RAILROAD STA-
TIONS, VILLAGES, COUNTIES, ISLANDS, LAKES, RIVERS, ETC.

THE SPECIAL FEATURES

OF THIS POCKET MAP ARE: LOCATING THE BRANCH OR PARTICULAR DIVISION OF
RAILROAD UPON WHICH EACH STATION IS SITUATED; THE NEAREST MAIL-
ING POINT OF ALL LOCAL PLACES; DESIGNATING MONEY ORDER
POST OFFICES; TELEGRAPH STATIONS; AND NAMING THE
EXPRESS COMPANY DOING BUSINESS AT THE POINTS
WHERE THE SEVERAL COMPANIES HAVE OFFICES.

Population is given according to the latest Official Census.

CHICAGO, U. S. A.:

RAND, McNALLY & CO.,

Map Publishers and Engravers.

EXPLANATION OF ABBREVIATIONS AND REFERENCE MARKS.

N—North. S—South. E—East. W—West. m—Miles. Ry or Rys—Railway or Railways.

- P. O. not located on Map.
- Money Order P. O.
- † Telegraph Station.
- ‡ American Express.

- § Canadian Express.
- ∫ Dominion Express.
- + Ontario Express.
- × Vickers Express.

All counties, towns, cities, villages, etc., are indexed in the following manner:
(See map of Kansas.)

Pop. '80.

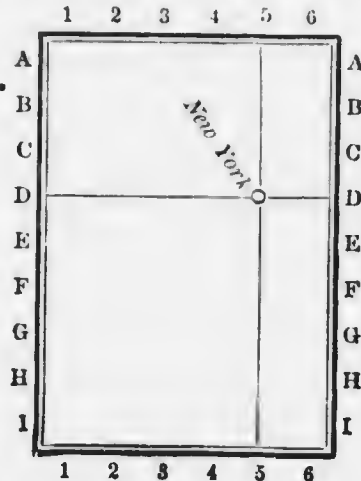
Burlington, Coffey, P-37, (Rys 21-e,
32-i) * † Δ + 2011
 California, Lane, 9 m N W Alamota,
 N-10, mail Juniata.

Burlington being in black type indicates that it is the county seat of Coffey county; P-37 shows where it can be found on the map (see example below); (Rys 21-e, 32-i), that it is a station upon each of these railways, 21 and 32 and branches e and i, (see list of railways, which are consecutively numbered and alphabetically arranged); *, that it is a money order postoffice; †, that it is a telegraph station; Δ + refer to the express companies as shown above; 2011 is the population given according to the latest official census.

California is in Lane county, nine miles northwest of Alamota, and mail for this place should be sent to Juniata Postoffice.

The letters and figures following names (like P-37 above) refer to that point on the map at which lines drawn from marginal figures top and bottom, and letters upon either side of map, would cross each other at right angles.

For example, to find "New York City, D-5:" let the diagram below represent the map. New York is seen near the crossing of lines D-D and 5-5.



Entered according to Act of Congress, in the year 1883, by

RAND, McNALLY & CO.,

In the Office of the Librarian of Congress, at Washington.

RAILROADS.

1 Bay of Quinte Railway & Navigation Co.

Deseronto, Q 23, to Deseronto Junction, Q 23.

Brantford, Norfolk & Port Burwell.

See Grand Trunk.

Brockville & Ottawa.

See Canadian Pacific, (Eastern Division).

2 Canada Atlantic.

Canadian Express.

Ottawa, L 28, to Coteau Landing, Que., M 33.

3 Canada Central.

See Canadian Pacific, (Eastern Division).

4 Canada Southern.

American Express.

Operated by Michigan Central.

a Fort Erie, W 16, to Detroit, Mich., W 1.

b St. Thomas, V 8, to Courtright, U 3.

c Fort Erie, W 16, to Niagara, U 15.

d Amherstburgh, X 1, to Essex Centre, X 2.

e Petrolia, U 5, to Petrolia Junction, U 5.

5 Canadian Pacific. Dominion and Canadian Expresses.

a Ottawa, L 28, to North Bay, 5 m W Mattawa, G 19.

b Brockville, P 28, to Carleton Junction, M 27.

c Aylmer, Que., L 27, to Hochelaga, Que., L 36.

d Perth, N 26, to Smith Falls, N 27.

e Port Arthur, C 25, to Winnipeg, Manitoba, leaving the Province, near English River, B 24.

f Ottawa, L 28, to Prescott, O 29.

6 Central Ontario.

Canadian Express.

a Trenton Station, Q 21, to Picton, R 23.

b Trenton Station, Q 21, to Baker Mine, N 21, Emily Mine, N 22, and Batchelor Mine, N 21.

7 Cobourg, Peterboro & Marmora.

Canadian Express.

a Cobourg, R 19, to Chambliss, P 19.

b Harwood, Q 19, to Blairton, P 21.

8 Credit Valley.

American Express.

a Toronto, S 15, to St. Thomas, V 8.

b Streetsville Junction, S 13, to Orangeville, Q 12.

c Church's Falls, R 12, to Elora, R 11.

9 Gananoque & Rideau.

Gananoque, Q 26, to Gananoque Station, Q 26.

Grand Junction.

See Midland of Canada.

10 Grand Trunk. Canadian and American Expresses

- a* Detroit, Mich., W 1, to Portland Me. leaving the Province at M 32.
- b* Fort Erie, W 16, to Goderich, Q 7.
- c* Galt, T 11, to Waterloo, S 10.
- d* Port Dover, V 11, to Wharton, M 9.
- e* Palmerston, Q 10, to Durham, O 10.
- f* London, U 8, to St. Mary's, T 8.
- g* Niagara Falls, U 15, to Windsor, W 1.
- h* Fort Erie, W 16, to Glencoe Junction, V 6.
- i* Hamilton, T 13, to Toronto, S 15.
- j* Harrisburg, T 11, to Southampton, N 8.
- k* Palmerston, Q 10, to Kincardine, O 7.
- l* London, U 8, to Wingham, P 8.
- m* London, U 8, to Sarnia, T 4.
- n* Wyoming, U 5, to Petrolia, U 5.
- o* Port Stanley, V 8, to London, U 8.
- p* Harrisburg, T 11, to Tilsonburg, V 9.
- q* Clifton, U 15, to Allanburg Junction, U 15.
- r* Port Colborne, V 15, to Merrilton Junction, U 15.

11 Grand Trunk, Georgian Bay & Lake Erie.

See Grand Trunk.

12 Great Western of Canada.

See Grand Trunk.

13 Hamilton & Northwestern.

See Northern & Northwestern.

14 Kingston & Pembroke.

Canadian Express.

Kingston, Q 25, to Lavant, M 25.

15 Lake Simcoe Junction.

See Midland of Canada.

16 London, Huron & Bruce.

See Grand Trunk.

17 Michigan Central.

See Canada Southern.

18 Midland of Canada.

Canadian Express.

- a* Toronto, S 15, to Coboconk, N 17.
- b* Stouffville, Q 15, to Jackson's Point, P 15.
- c* Port Hope, R 19, to Midland, M 14.
- d* Millbrook, Q 13, to Lakefield, P 19.
- e* Port Whitby, R 16, to Haliburton, M 19.
- f* Belleville, Q 22, to Omemee, P 18.
- g* Madoc, O 22, to Belleville, Q 22.

19 Napanee, Tamworth & Quebec.

Napanee, Q 23, to Tamworth, P 24.

20 Northern & Northwestern.

Canadian and Vickers Expresses.

- a* Toronto, S 15, to Meaford, N 11.
- b* Port Dover, V 11, to Collingwood, N 12.
- c* Allandale, O 14, to Gravenhurst, M 16.
- d* Allandale, V 11, to Beeton, P 14.
- e* Bell Ewart, P 15, to Lefroy, P 14.
- f* Allandale, O 14, to Penetanguishene, M 14.

Northern.

See Northern & Northwestern.

21 Ontario & Quebec.

In course of construction.

Toronto, S 15, to Perth, N 26.

Port Dover & Lake Huron.

See Grand Trunk.

- 22 Port Whitby & Port Perry.**
See Midland of Canada.
- 23 Prince Edward County.**
See Central Ontario.
- 24 Quebec, Montreal, Ottawa & Occidental.**
See Canadian Pacific.
- 25 St. Lawrence & Ottawa.**
See Canadian Pacific.
- 26 Toronto, Grey & Bruce.**
Canadian and Vickers Expresses.
a Toronto, S 15, to Owen Sound, V 10.
b Orangeville, Q 12 to Teeswater, P 8.
- 27 Toronto & Nipissing.**
See Midland of Canada.
- 28 Victoria.**
See Midland of Canada.
- 29 Welland.** American Express.
Port Colborne, V 15, to Port Dalhousie, U 15.
- 30 Wellington, Grey & Bruce.**
See Grand Trunk.
- 31 Whitby, Port Perry & Lindsay.**
See Midland of Canada.

COUNTIES.

Addington ... O-23	Muskoka District.....J-15
Algoma District ... C-7	Nipissing District.....I-20
Brant.....U-11	Norfolk.....V-10
Bruce.....O-8	Northumberland.....Q-20
Carleton.....L-28	Ontario.....P-16
Dundas.....N-29	Oxford.....T-10
Durham.....Q-18	Peel.....R-13
Elgin.....V-7	Perth.....R-9
Essex.....X-2	Peterborough.....N-19
Frontenac ... O 25	Prescott.....L-31
Glengary.....M-32	Prince Edward R-22
Grenville.....N-28	Reufrew.....K-23
Grey.....O-11	Russell.....L-30
Haldimand .. V-13	Simcoe.....O-14
Hilton.....S-13	Stormont.....M-31
Hastings.....O-22	Victoria.....O-17
Huron.....R-8	Waterloo.....S-19
Kent.....W-5	Welland.....V-15
Lambton.....U-4	Wellington...R-11
Lanark.....M-26	Wentworth...T-12
Leeds.....O-27	York.....R-15
Lennox.....Q-23	
Lincoln.....U-14	
Middlesex.....U-7	

Islands—continued.

Fitzwilliam... I-8	Mississauga.... E-4
Flower Pot.....J-8	Nichols.....R-21
Fox.....G-10	Nut.....R-24
George.....G-9	Outer Drake...R-24
George.....I-8	Outer Duck...H-4
Gheghecto.....L-9	Papoose.....G-10
Grand.....E-3	Parry.....K-13
Grand Man-Itoulin.....G-6	Phillp Edward G-10
Glant's Tom...L-13	Pigeon.....R-25
Great Duck...G-4	Rabbit.....H-9
Green.....F-4	Roils.....F-8
Griffith's.....L-10	Snake.....J-8
Half Moon.....I-9	Squaw.....G-9
Hay.....L-10	St. Anne's....V-3
Heywood.....G-8	St. Joseph....D-1
Hope.....L-13	Strawberry...G-8
Horse Shoe...Q-25	Sulphur.....E-2
Howe.....Q-26	The Indian...J-12
Inner Drake...R-24	The Line-stone.....J-12
Inner Duck...G-4	Turkey.....X-1
Innes.....F-6	Wall.....I-8
Iron.....F-15	Walpole.....V-3
James.....I-8	Wateber.....L-13
John.....E-6	Western Duck..G-4
Lightning.....X-1	White Cloud L-10
Long Point...W-11	White Spruce N-12
Loon.....G-8	William.....G-9
Lovely.....I-9	Wolfe.....Q-25
Lucas.....I-8	Woopoose...R-23
Lyal.....L-9	Yorkshire...R-25
Middle Duck...G-4	

ISLANDS.

Aird.....E-6	Bustard.....G-11
Amadros.....F-7	Chantry.....N-8
Amherst.....R-24	Christian.....M-13
Annaretta....G-9	Clapperton...F-7
Barrie.....F-5	Cloche.....F-8
Barrier.....L-10	Club.....I-9
Bear's.....J-8	Cockburn.....F-3
Beckwith....M-13	Cove.....J-8
Bedford.....F-8	Darch.....F-6
Bigshy.....D-3	Duck.....R-24

LAKES.

Ahmle.....J-15	Bark.....K-21
Angignomeh..E-31	Bark.....M-23
Ayasguabick..N-24	Bass.....M-17
Bald.....O-19	Bass.....N-15
Bellevue.....N-17	Bass.....N-18

Lakes—continued.

Acas.....	O-27	Fourth.....	O-24
Acas.....	O-24	George.....	C-1
Beaver.....	P-24	George.....	K-31
Beech.....	L-18	Golden.....	J-23
Belmont.....	O-21	Goose.....	O-24
Benjamin.....	N-22	Goose.....	P-23
Bennett's.....	N-25	Gorman.....	K-22
Big Clear.....	N-24	Graham.....	O-27
Birch.....	P-25	Great Opeongo.....	L-30
Big.....	O-22	Green.....	B-7
Blacks.....	O-20	Green.....	J-24
Black Sturgeon.....	R-26	Gull.....	M-18
Boat.....	M-9	Gul'.....	N-24
Bob's.....	O-25	Halls.....	L-16
Boshkung.....	L-18	Harrowood.....	K-23
Britchless.....	K-23	Head.....	N-17
Buck.....	L-20	Heart.....	P-26
Bull.....	O-23	Hemsey.....	N-22
Calabogie.....	L-25	Hog.....	P-22
Cameron's.....	O-18	Honds.....	K-25
Can.....	C-28	Herse Shoe.....	M-18
Catfish.....	H-19	Hungry.....	N-24
Caykaganbaru- rong.....	L-18	Indian.....	K-23
Cedar.....	H-19	Indian.....	M-24
Cedar.....	O-19	Indian.....	O-26
Chamberlains.....	L-25	Island.....	L-19
Charleston.....	P-27	Island.....	M-23
Charlotte.....	K-22	Joss.....	M-25
Chemong.....	P-19	Joseph.....	K-15
Chippige.....	O-24	Kaminskeg.....	K-22
Christies.....	N-26	King.....	M-23
Clear.....	K-23	Knowlton.....	P-25
Clear.....	L-22	Koshamak- muk.....	N-24
Clear.....	O-19	Kushagavlg- amog.....	M-18
Clyde.....	L-25	Lake la Tortue.....	F-17
Cockburn.....	N-25	L'Annabie.....	M-21
Colton's.....	K-25	Leon.....	K-21
Constan.....	K-21	Lily.....	L-21
Corry.....	H-23	Little.....	M-11
Conchouching.....	N-15	Little.....	N-14
Crab.....	N-20	Little.....	O-14
Cranberry.....	O-28	Little Opeongo.....	J-21
Cross.....	N-21	Long.....	O-23
Crown.....	K-25	Long.....	O-21
Crystal.....	M-22	Loon.....	N-23
Dalhousie.....	N-24	Lorwill.....	K-23
Davis.....	N-18	Loughborough.....	P-25
Deer.....	N-19	Lower Mud.....	N-16
Desbaras.....	C-1	McDongalls.....	J-20
Desert.....	C-2	McKaskills.....	I-21
Devil.....	G-25	McKays.....	H-29
Diamond.....	K-22	McKays.....	M-26
Doe.....	J-16	Malcoms.....	M-24
Doe.....	O-21	Manitou.....	G-7
Dog.....	C-26	Maple.....	L-18
Dore.....	J-21	Marmora.....	O-21
Duck.....	N-23	Marys.....	K-16
Engle.....	N-19	Maserlonge.....	H-23
Eagle.....	O-21	Mill.....	J-14
East.....	O-22	Millers.....	K-25
Echo.....	B-2	Mindemoya.....	G-7
Echo.....	K-22	Mink.....	J-24
Eel.....	M-20	Mint.....	K-22
Elbow.....	O-21	Mississippi.....	M-27
Esnogaming.....	D-31	Moore's.....	N-17
Fairy.....	K-17	Moose.....	L-20
Fifth.....	O-24	Mountain.....	C-28
Fortune.....	M-24	Mountain.....	M-18
Four Mile.....	N-18		

Lakes—continued.

Mud.....	E-11	Silver.....	K-23
Mud.....	J-23	Simcoe.....	O-15
Mud.....	J-24	Six Mile.....	L-15
Mud.....	L-24	Skeleton.....	K-16
Mud.....	N-14	Small.....	G-12
Mud.....	P-16	Sorers.....	M-18
Mud.....	P-24	South.....	M-18
Muddy.....	M-26	Sparrow.....	M-15
Muskoka.....	L-15	Spring.....	L-22
Muskrat.....	J-24	St. Peter.....	K-30
Musquito.....	M-24	Steel.....	B-29
Mussonoga.....	N-24	Stoco.....	P-23
Nashausng.....	G-17	Stone's.....	L-25
Nipigon.....	H-27	Stony.....	O-20
Nipissing.....	F-15	Sturgeon.....	H-23
Norway.....	L-25	Sturgeon's.....	O-18
Norway.....	O-24	Sugar.....	P-22
Otter.....	M-22	Sydenham.....	P-25
Otter.....	O-27	Tanaga- mingue.....	H-14
Otter Slide.....	L-19	Taylor's.....	M-26
Otty.....	N-26	Third.....	O-25
Ox Tongue.....	K-18	Third.....	O-26
Owl.....	C-28	Trading.....	K-17
Pakowaga- mingue.....	D-3	Traverse.....	H-21
Partridge.....	N-23	Trout.....	C-28
Pahke.....	D-30	Trout.....	H-20
Penace.....	F-10	Trout.....	J-14
Peninsula.....	K-17	Trout.....	L-22
Petersons.....	M-25	Trout.....	M-21
Pigeon.....	O-19	Trout.....	N-19
Popineau.....	K-21	Twelve Mile.....	L-18
Portage.....	E-11	Vernillion.....	D-10
Pruty.....	K-22	Vernon.....	K-16
Purde.....	O-24	Victoria.....	J-21
Ragawonk.....	G-6	Wabatonk.....	D-31
Rat.....	E-10	Waquekong.....	D-3
Red Pine.....	H-19	Wauhaptae- ring.....	C-12
Rice.....	Q-19	Wawa.....	E-30
Rideau.....	O-26	Wawmash.....	T-4
Robinson.....	M-25	Wellers.....	R-21
Rock.....	C-2	Weslemkoon.....	M-22
Rock.....	M-22	West.....	R-22
Rosseau.....	K-15	White.....	C-30
Round.....	E-11	White.....	L-23
Round.....	J-22	White.....	L-26
Round.....	O-20	White.....	L-26
Saluon.....	N-22	White.....	N-20
Salmon Trout.....	O-20	White.....	O-25
Sand.....	O-26	White Fish.....	E-10
Sandy.....	O-19	White Trout.....	I-19
Schooner.....	M-24	White Water.....	D-11
Second.....	O-26	Wolf.....	N-20
Sesebe.....	L-16	Wolf.....	O-25
Shalbomekah.....	N-23	Wolsey.....	G-6
Shallow.....	L-18	Youngs.....	R-21
Shareot.....	N-25		

RIVERS.

Agawa.....	F-31	Black.....	N-16
Arrow.....	D-25	Black Sturgeon.....	C-26
Ansable.....	T-6	Bhd.....	E-4
Batchewang.....	F-31	Bonnechere.....	K-21
Bayfield.....	R-7	Burnt.....	N-18
Beaudette.....	M-32	Butternut.....	L-31
Beaver.....	M-16	Canning.....	T-10
Beaver.....	N-11	Castor.....	L-30
Bighead.....	N-11	Chippewa.....	F-31
Black.....	M-17	Clyde.....	M-25

Rivers—continued.

Crow.....	O-21	Nine Mile.....	P-7
DeLisle.....	M-31	Nipigon.....	C-27
DeChart.....	K-26	Nottawasa.....	Q-13
Dog.....	C-25	Pacasquaw.....	D-29
Dog.....	E-30	Papineau.....	I-21
Dore.....	E-30	Payne.....	M-31
East Branch		Petawawa.....	H-21
of Spanish.....	E-10	Pic.....	C-29
French.....	G-14	Pine.....	P-13
Garden.....	H-1	Pretty.....	O-12
Gonials.....	G-31	Rideau.....	D-29
Grand.....	R-11	Rideau.....	M-28
Grand.....	V-13	Rook Saugeen	O-10
Gravel.....	E-30	Sable.....	D-7
Gull.....	B-36	Sable.....	G-31
Gull.....	M-18	Salmor.....	P-31
Gull.....	N-17	Sand.....	E-31
Indian.....	L-26	Saugeen.....	N-9
Jack.....	M-28	Scoutamatto	O-21
Jack Fish.....	C-27	Segona.....	J-14
Jordan.....	O-21	Serpent.....	E-6
La Grasse.....	L-32	Severn.....	M-15
La Petite		Shawanaga.....	I-13
Nation.....	L-30	South Branch	W-28
Little Hen.....	E-30	South Branch	N-32
Little Castor	L-30	Span' h.....	E-8
Little Pic.....	C-29	Speed.....	S-12
Mad.....	O-13	quaw.....	O-19
Madawaska.....	L-25	St. Mary.....	I-1
Magametawan	H-13	Steel.....	C-28
Magle.....	E-31	Sturgeon.....	E-14
Mailand.....	Q-7	Sydenham.....	V-4
Matawan.....	F-18	Thames.....	S-8
Melchiptoten	E-31	Thessalon.....	C-2
Mississauga.....	D-4	Trent.....	Q-21
Mississippl.....	L-26	Trick.....	D-29
Molra.....	O-21	Tuscarara.....	U-11
Montreal.....	E-35	Vermillion.....	D-10
Montreal.....	F-31	Wabiska.....	D-30
Muskoka.....	L-15	White.....	D-29
Nalscontang.....	I-12	White Fish.....	F-9
Nnamitlgong	G-16	York.....	L-21

Towns, etc.—continued.

	Pop. '81
Ainleyville Station, Q-8, (Ry 10-a) :	25
Airey, Elgin Co. *	
Airle, O-13, (Ry 20-b).....	150
Air Line Crossing, (Ry 4-b) ; 4 m S E	
Southwold, V-7.	
Air Line Junction, see Welland Junc-	
tion, V-15.....	75
Albert, 4 m E Road, Q-23.....	25
Alberston, I-13.....	190
Ablon, Q-13 *.....	606
Albany, R-21.....	50
Aldborough, U-6 *.....	50
Aldershot, T-13.....	50
Alderville, Q-20.....	200
Alexandria, L-32, (Ry 2) * + §.....	1000
Alfred, K-31.....	150
Alfred Island, see Alfred, K-31.	
Algoma Mills, Algoma Co. *.....	
Algonquin, O-28.....	300
Allanburg, V-15, (Rys 10-r, 29) + :	150
Allanburg Junction, U-15, (Rys 10-g, r,	
29).....	
Allandale, O-14, (Ry 20-a, c, d, e) * + * ×	700
Allan Park, O-9.....	150
Allan's Mills, N-26.....	50
Allendale, P-19.....	200
Allenford, N-9, (Ry 10-t) * + +.....	150
Allensville, K-16 *.....	25
Allenwood, N-13.....	25
Allisonville, R-22.....	150
Alliston, P-13, (Ry 20-b) * + §.....	1099
Allea, R-13.....	50
Alma, R-11, (Ry 10-j) + :	200
Alma, (Ry 18-c) § 2 m S E, Cold-	
water, N-15.	
Almira, Q-15.....	
Almonte, L-27, (Ry 5-a) * + §.....	2684
Alport, L-16.....	
Alsace, Muskoka Dist. *	
Alfeldt, P-9, (Ry 10-t) +.....	25
Althorpe, 18 m S W Perth, N-26.	
Alton, Q-12, (Ry 8-b) * + ‡.....	500
Altona, Q-16.....	100
Alton Station, Q-12, (Ry 26-a) ×.....	25
Alvanley, N-9.....	100
Alvinston, U-5, (Ry 4-b) + ‡.....	830
Amaranth, Q-12, (Ry 26-b) ×.....	25
Amberly, P-7.....	50
Ambleside, P-9.....	50
Ameliasburgh, R-22.....	300
Amherstburgh, X-1, (Ry 4-t) * + ‡.....	2672
Amiens, U-7.....	70
Amilgarl, 1 m from Fort Erie, W-16.....	150
Annree, Oxford Co. *	
Ancaster, T-12 *.....	800
Anderson, S-3.....	102
Anderson, X-1.....	25
Andrewsburgh, see Escott, P-27.	
Anglesea, see Cloyne, N-23.	
Angus, O-13, (Ry 20-a) * + ×.....	500
Anuan, M-10.....	25
Ansonia, Algoma Co. *	
Anstruther, see Apsley, N-20.	
Anten Mills, 11 miles from Barrie,	
O-14.....	200
Antloch, Muskoka Dist. *	
Antrim, L-27.....	120
Appin, V-6, (Ry 10-g) + ‡.....	150
Appleby, T-13.....	150
Appledore, Kent Co. *.....	200
Apple Hill, Glengarry Co. *	

TOWNS, COUNTIES, ETC.

	Pop. '81.
Aberarder, T-5, (Ry 10-a) §.....	100
Aberdeen, 5 m N W Durham, O-10.....	30
Aberdour, 5 m N Paisley, O-8.....	200
Aberfeldy, Lambton Co. *.....	30
Aberfoyle, S-12 *.....	150
Ablington, U-13.....	26
Aboyne, 1 m N E Elora, R-11.....	70
Acacia, V-9.....	100
Acton, R-12, (Ry 10-a) * + §.....	848
Adam, see Ventnor, N-29.	
Adam's Corners, see Garden Hill,	
Q-18.....	100
Adare, T-7.....	150
Addison, O-27.....	250
Adelalde, U-6 *.....	200
Adjuda, 4 m N E Hel Fountain, R-13.....	25
Admaston, K-25.....	50
Adolphustown, R-23.....	150
Aghincourt, R-15, (Ry 18-a) + §.....	50
Ahmic Harbour, Muskoka Dist. *	
Ahmic Lake, 30 m N E Parry Sound,	
K-14.....	500
Ailsa Craig, T-7, (Ry 10-a) * + §.....	872

<i>Towns, etc.—continued.</i>	Pop. '81.	<i>Towns, etc.—continued.</i>	Pop. '81.
Appleton, M-27	200	Ayr, T-11, (Ry 8-a) * + †	1300
Appleton Station, M-27, (Ry 5-a) + §	25	Ayton, P-9, (Ry 10-d) * + +	250
Apsley, N-20	75		
Apto, O-14	100		
Archdr. Dundas Co. *			
Arden, O-24	150	Baby's Point, V-3	50
Ardoch, N-24	300	Badlow, O-18	25
Ardrae, N-15	200	Baden, S-10, (Ry 10-a) * + §	700
Argyle, see Argyle Station, O-17	100	Badjeros, O-12	25
Argyle Station, O-17, (Ry 18-a) §	100	Bagot, L-25	40
Arkell, S-12	100	Baie du Dore, N-8	25
Arkoni, T-6 *	569	Baillieborough, Q-19 *	300
Arkwright, N-9 *	150	Bainsville, M-33, (Ry 10-a) + §	25
Arllington, P-13	90	Bairds, V-7, (Ry 10-h) †	25
Armada, R-15	30	Baker Mine, N-21, (Ry 6-b) §	
Armitage, see Quays, R-19		Bakersville, Wentworth Co. *	
Armow, O-8	80	Bala, L-15	30
Armstrong's Corners, N-26	200	Balakava, 1 m S Shakespeare, S-9	150
Armstrong's Falls, see McKellar,		Balderson, N-26	100
J-14	150	Baldoo, Kent Co. *	
Armstrong's Mills, 7 m N Guelph,		Baldwin, P-23	100
S-12	60	Baldwin, 50 m N E Toronto, S-15	300
Arnott, N-10, (Ry 26-a) + §	75	Balentra, P-24	25
Arnrior, K-26, (Ry 5-a) * + §	2146	Balfour, Prince Edward Co. *	
Aros, O-17	137	Ballauntrae, Q-15, (Ry 18-b) §	25
Arthur, Q-11, (Ry 26-b) * + †	1257	Ballantyne's, Q-26, (Ry 10-a) + §	25
Arva, U-7	200	Ballinafad, R-12	150
Ash, 7 m S Milton, S-13		Ballinville, Carleton Co. *	300
Ashburn, Q-16	150	Ballsville, U-12, (Ry 20-b) †	130
Ashburnham, P-19	1266	Ballycro, Q-13	100
Ashdad, 6 m W Bagot, L-25	100	Ballyduff, Q-18 *	80
Ashdown, K-15	100	Ballymote, U-7	100
Ash Grove, S-13	56	Balmer's Island, see Stewartville,	
Ashley, N-10	25	K-26	75
Ashley Station, N-10, (Ry 26-a) ×	250	Balmora, R-15	25
Ashton, M-27	200	Balmoral, S-11, (Ry 10-a) §	25
Ashton Station, M-27, (Ry 5-a) §	25	Balmoral, V-12	50
Ashworth, P-16	25	Balsam, Q-16	25
Askin, 1 m S London, U-8	25	Balsam Lake, 4 m from Victoria Road, O-17	
Aspdin, K-16	70	Baltic, Glengarry Co. *	
Asphodel, P-20	100	Baltimore, R-19, (Ry 7-a) + §	400
Asselstine's Mills, 3 m from Ernestown, Q-24	35	Bamberg, S-10	150
Atha, R-16	50	Bancroft, * 76 m from Belleville Q-22	100
Athens, Q-16	25	Banda, O-13	85
Atherly, N-16, (Rys 18-c, 20-c) + § ×	400	Bandon, R-8	75
Atherton, V-10	80	Bangor, R-16	100
Athlone, Q-13	100	Banks, Grey Co. *	
Athol, L-31	150	Bannockburn, O-2	100
Attercliffe, V-13	200	Baptiste Creek Station Gt. W. Ry,	
Attercliff Station, V-13, (Ry 4-a) + †	25	5 m E Stony Point II-3	25
Atwood, Perth Co., (Ry 10-k) † *		Barb, Prescott Co. *	
Auburn, Q-7	200	Barclay, 6 m N E Little Britain, P-17	
Auburn, S-13, (Ry 8-a) + †	200	Bardolph, Lenoxx Co. *	
Auburn Mills, (Ry 18-l) § 2 m N E Peterborough, P-19		Barchewang, F-31	
Audley, R-16	25	Bardsville, K-16	25
Anghrim, V-5	50	Bark Lake, J-21	25
Aultsville, N-30, (Ry 10-a) * + §	350	Barkway, Muskoka Dist. *	
Aurora, Q-15, (Ry 20-a) * + ×	1540	Barnett, R-11	90
Avening, O-13, (Ry 20-b) * + §	600	Barrett, 56 m N E Rosseau, K-15	200
Aven, U-8	200	Barrie, O-14, (Ry 20-c) * + § ×	4854
Avonbank, S-8	25	Barriemfield, Q-25	300
Avonmore, M-31	200	Barrie Island, Algoma Co. *	
Avouroy, Kent Co. *		Barritt's Rapids, N-28	
Avouton, S-8	100	Bar River, Algoma Co. *	
Axe Lake, 10 m from Rosseau, K-15	110	Barry's Bay, 49 m from Cobden, J-25	150
Aylmer West, V-8, (Ry 10-h) * + †	1540	Bartonville, U-13	100
		Basin Depot, Nipissing Dist. *	
		Basingstoke, Wentworth Co. *	
		Basswood, Welland Co. *	

	Towns, etc.—continued.	Pop. '81.
	Batchelor Mine, N-21, (Ry 6-b) §	
	Batchewang, F-31.	
	Bates Corner, M-29.	25
	Bath, Q-1 *	650
	Bathurst, see Glen Tay, N-26.	
	Batteaux, O-13, (Ry 20-a) ×	400
	Battersen, P-26.	300
	Bayfield, R-7 *	679
	Bayham, U-9.	350
	Bayside, Hastings Co. •	
	Baysville, L-17 *	200
	Bayview, N-11	27
	Beachburgh, J-25 *	200
	Beachville, U-9, (Rys 8-a, 10-g) * + †	100
	Beaconsfield, Oxford Co. •	
	Bealton, U-11	100
	Beamsville, U-14 *	685
	Beamsville Station, U-14, (Ry 10-g) + †	25
	Ear Brook, L-30.	200
	Beatrice, L-16.	25
	Beaumaris, 14 m N W Gravenhurst, M-16.	
	Beaver, Prescott Co. •	
	Beaverton, O-16, (Ry 18-c) * + §.	1200
	Becher, V-3.	25
	Beckstead, Dundas Co. •	
	Beckwith, M-27, (Ry 5-b) §.	25
	Bedford, (Ry 14) + § 5 m N Verona, P-24.	25
	Bedford, Addington Co. •	
	Bedford Mills, 6 m S E Fermoy, O-25	75
	Bed Rock, C-26.	
	Beech Lane, Norfolk Co. •	
	Beechwood, 3 m E Winthrop, R-9.	50
	Beeton, Simcoe Co., (Ry 20-b d) * + § •	1125
	Beeton Junction, P-14, (Ry 20-b d) §	
	Beggborough, 35 m N Bracebridge, L-16	20
	Belfast, P-7	150
	Belford, R-15.	200
	Bel Fountain, R-13	200
	Belgrave, Q-8, (Ry 10-l) †.	150
	Belhaven, P-15.	100
	Bellamy's, O-28, (Ry 5-b) + §	25
	Bellamy's Mills, M-26.	120
	Belle River, W-2, (Ry 10-g) * + †.	556
	Belleville, Q-22, (Rys 10-a, 18-f, g) * + §	9516
	Bellevue, Victoria Co. •	
	Bell Ewart, P-15, (Ry 20-e) * ×	600
	Belrock, P-24.	200
	Bells, O-28, (Ry 5-b) §.	25
	Bell's Corners, L-28, (Ry 5-a) * §.	100
	Belmont, U-8	600
	Belmont Station, Middlesex Co., (Ry 8-a) †	
	Belmore, P-9.	150
	Belton Station, 5 m S St. Mary's, T-8.	
	Bendale, York Co. •	
	Benn Miller, Q-7.	150
	Bennie's Corners, L-26	100
	Bennington, T-8	50
	Bensfort, Q-19.	150
	Bentley, X-5	25
	Bentley's Corners, see Brougham, R-16.	300
	Bentonville, M-30.	25
	Bentonville, U-12, (Ry 20-b) ×	25
	Berkeley, O-11, (Ry 26-a) ×	150
	Berlin, S-11, (Ry 10-a, c) * + §.	4054
	Berne, S-7.	100
	Bernedale, 32 m N Huntsville, K-17.	25

	Towns, etc.—continued.	Pop. '81.
	Berryton, Leeds Co. •	
	Bertie Road, W-15, (Ry 10-b) †.	25
	Bervie, O-8.	200
	Berwick, M-30	80
	Bethany, Q-18, (Ry 18-c) * + §.	600
	Bethesda, Q-15.	100
	Bewdley, Q-19.	100
	Bexley, N-17.	25
	Big Bay, 3 m S North Keppel, M-10.	25
	Big Bluff, R-23.	25
	Big Lake, Algoma Co. •	
	Big Point, Kent Co. •	
	Billings Bridge, L-29.	200
	Binbrook, U-12.	200
	Bingham Roads, V-13.	50
	Binkham, 4 m N W Erin, K-12.	50
	Birdsal's, (Ry 18-f) § 7 m S Keene Station, Q-19.	
	Birkhall, U-4.	60
	Birman, T-5.	25
	Birmingham, Q-26	200
	Birr, T-7	75
	Bishop's Gate, 2 m from Burford, U-11.	200
	Bishop's Mills, N-28.	250
	Bismarck, V-14.	
	Bismark, W-6, (Ry 4-a) + †.	200
	Bissett's Creek, G-21, (Ry 5-a) §	
	Blackbank, O-13	150
	Blackburn, Russell Co. •	
	Black Creek, V-15, (Ry 4-c) †.	100
	Blackheath, U-13.	25
	Black River Bridge, 4 m E Milford, R-23.	
	Black's Corners, 6 m N E Bowling Green, Q-12	80
	Blackwell, T-4, (Ry 10-c) §.	25
	Blair, S-11, (Ry 10-c) + §.	200
	Blairhampton, Victoria Co. •	
	Blairton, P-21, (Ry 7-b) §.	35
	Blake, 8 m W Kippen, S-7.	75
	Blakeney, L-26.	
	Blandford, T-10, (Ry 8-a) †.	25
	Blantyre, N-11	25
	Blenheim, T-10, (Ry 8-a) * + †.	1212
	Blessington, Q-22	250
	Bleazard's, (Ry 18-f) § 4 m S Keene, Q-19.	
	Blind River, Algoma Co. •	
	Bloomfield, R-22, (Ry 6-a) + §	600
	Bloomington, S-11	120
	Bloomington, Q-15.	175
	Bloomsburg, V-11.	100
	Bluevale, Q-8, (Ry 10-k) * + †.	300
	Blyth, Q-8, (Ry 10-l) * + †.	914
	Blytheswood, X-2.	50
	Bobcaygeon, O-18 *	750
	Bogart, P-23.	100
	Bognor, 12 m N E Menford, N-11.	150
	Boigton, P-14.	25
	Boieseneau's, (Ry 5-a) § 7 m N W Denx Rivieres, G-20.	
	Bolingbroke, N-25	80
	Balsaver, O-17	200
	Bolton, R-14, (Ry 26-a) + ×	606
	Bolton's Corners, see Edwardsburgh, O-29.	
	Bondhead, Q-14 *	150
	Bongards, R-23.	200
	Bonnechere, 1 m from Mouth Bonne- chere River, K-24.	100
	Bookton, U-10.	206
	Borelia, see Port Perry, Q-16.	300
	Bornholm, R-8.	100

<i>Towns, etc.—continued.</i>	Pop. '81.	<i>Towns, etc.—continued.</i>	Pop. '81.
Borlsh, T-6	25	Bredhagen, R-8	200
Bosanquet, see Ruvenwood, T-5.		Bronson, M-21	25
Bosking, Peterborough Co. *		Bronte, T-13, (Ry 10-i) * + †	300
Boston, R-13, (Ry 8-b) §	25	Brooke, Lanark Co. *	
Boston, U-11	500	Brookfield Station, (Ry 4-a) ‡ 4 m E Port Robinson, V-15	25
Boston Mills, 1 m N W Cheltenham, R-13	25	Brookholm, Grey Co. *	
Bosworth, Q-10	150	Brooklin, R-16, (Ry 18-4) * + §	500
Botany, V-5	100	Brooksdales, T-3	60
Bothwell, V-5, (Ry 10-g) * + †	1000	Brougham, R-16 *	300
Bouck's Hill, N-30	25	Bronseville, N-29	25
Boulter, L-22	50	Crown's Corners, R-15	200
Bourdeau, Muskoka Dist. *		Brownsville, V-9, (Ry 4-a) + †	100
Bowdley's Landing, 4 m S W Gore's Landing, Q-19	25	Brucefield, R-7, (Ry 10-l) + †	250
Bower, Q-23	25	Bruce Mines, D-2 *	1298
Bowesville, Russell Co. *		Brudenell, K-23	200
Bowling Green, Q-12	30	Brunner, S-9, (Ry 10-d) +	50
Bowmanton, Q-19	40	Brunswick, P-18, (Ry 18-c) §	50
Bowmanville, R-17, (Ry 10-a) * + §	3504	Brussels, Q-8, (Ry 10-k) * + †	561
Bowmore, see Duntroon, O-12	100	Bryantstone, T-8	100
Bowood, Middlesex Co. *	170	Buckhorn, X-4	150
Box Grove, R-15	150	Buckshot, M-26	35
Boyne, S-13	70	Buda, Algoma, (C-2), (Ry 5-e) ☉	
Bracebridge, L-16 *	2185	Bulger, Renfrew Co. *	
Brackenrigg, 4 m E Port Carling, L-15	52	Bullocks Corners, T-12	150
Bracondale, York Co. *		Bumbury, 2 m N E Ameliasburg, R-22	
Braden's, (Ry 7-a) § Northumberland Co.		Bunessan, O-10	25
Bradford, P-14, (Ry 20-a) * + ×	1176	Bunyan, U-4	25
Bradshaw, V-4	25	Burford, U-11, (Ry 10-p) * + †	700
Bradyville, K-31	25	Burgessville, U-10, (Ry 10-d) +	200
Braemar, T-9	80	Burgoyne, N-9	100
Braeside, K-26, (Ry 5-a) + §	25	Burk's Falls, 63 m from Gravenhurst, M-16	40
Branley, O-14, (Ry 20-a) + ×	50	Burleigh, O-20	120
Brampton, R-13, (Rys 8-b, 10-a) * + × §	2920	Burleigh Falls, Peterborough Co. *	
Branchton, T-11, (Ry 10-j) + †	200	Burlington, (Rys 10-i, 20-b) * + † § see Wellington Square, T-13	1068
Brandy Creek, V-10, (Ry 10-d) +	100	Burlington Beach, T-13, (Ry 20-b) + §	
Brantford, U-11, (Ry 10-b,p) * + †	9616	Burnbrae, P-21	200
Breadalbane, 2 m N E Lochiel, L-32	25	Burnhamthorpe, S-14	60
Brechin, O-16, (Ry 18-c) + §	200	Burnley, Q-20	42
Brecon, T-7, (Ry 10-l) + †	50	Burns, R-9	50
Brentwood, O-13, (Ry 20-a) ×	200	Burnstown, K-25	100
Breslau, S-11, (Ry 10-a) + §	350	Burnt River, N-18	60
Brewer's Mills, P-26	150	Burritt's, (Ry 5-a) § 5 m S E Mattawa, G-19	
Brewster, S-6	100	Burritt's Rapids, N-28	400
Brickley, 5 m N Warkworth, Q-20		Burrowsville, see Ethel, Q-8.	
Bridge End, M-32	100	Burton, U-11	25
Bridgenorth, P-19	150	Burton, Q-17	25
Bridgeport, S-11	450	Burwick, see Woodbridge, R-14	1100
Bridgeport, U-14	25	Bury's Green, O-18	90
Bridge River, Algoma, (Ry 5-e) ☉		Bushfield, Q-8	200
Bridgewater, O-22 *	400	Buttonville, R-15	200
Brigden, U-4, (Ry 4-b) †	450	Buxton, X-4	50
Bright, T-10, (Ry 10-b) * + †	350	Buxton Station, X-4, (Ry 4-a) †	200
Brighton, R-21, (Ry 10-a) * + §	1547	Byng, V-13	150
Brightside, Lanark Co. *		Byng Inlet, H-12	300
Brinkworth, P-21	50	Byrnedale, Essex Co. *	
Brinsley, T-7	100	Byron, U-7	125
Brinston's Corners, N-29	50		
Brisbane, R-12	50		
Bristol, see Brisbane, R-12	50		
Britannia, 3 m E Meadowvale, S-12	100		
Britannia Station, L-28, (Ry 5-a) §	25		
Briton Station, R-9, (Ry 10-a) +			
Broadbent, 8 m S McKellar, J-14			
Brock, P-16, (Ry 18-a) §	25		
Brock Road, S-12, (Ry 8-a) †	25		
Brockton, S-15, (Ry 10-a) §	78		
Brockville, P-28, (Rys 5-b, 10-a) * + §	8000		
		Cadmus, Q-17	50
		Caes'reu, Q-17	190
		Cainsville, (Ry 10-b) † 2 m E Langford, U-12	300

	Towns, etc.—continued.	Pop. '81.
..	Calntown, P-27	250
..	Calnrgorm, U-6	150
..	Calstorville, U-13 *	100
..	Calahogle, L-25	50
..	Calder, V-7	200
..	Caldwell, R-13	100
..	Caledon, * see Charleston Station, Q-13.	300
..	Caledon East, (Rys 20-b, 26-a) + § see East Caledon, Q-13.	200
..	Caledonia, U-12, (Rys 10-b, 20-b) * + † §	1242
..	Caledonia Flats, L-31	100
..	Caledonia Spring, K-32	100
..	Callendar, F-17, (Ry 5-a) §	
..	Calstadt, B-24, (Ry 5-e) ☉	
..	Calton, V-9	50
..	Camborne, Q-19	50
..	Cambray, O-17 *	200
..	Cambray Station, P-17, (Ry 18-c) + §.	25
..	Camden East, Q-24, (Ry 19)	600
..	Cameron, (Ry 18-e) § 8 m from Lindsay, P-17	60
..	Camerontown, M-32	25
..	Camilla, Q-12	100
..	Camlachie, T-5, (Ry 10-a) * + §.	125
..	Campbellford, P-21, (Ry 18-f) * + §.	1418
..	Campbells, R-13, (Ry 8-b) †	
..	Campbells Cross, (Ry 8-b) † see Campbells, R-13.	
..	Campbellton, 3 m S E Glencoe Junc- tion, V-6	50
..	Campbelltown, I-24	
..	Campbellville, S-12, (Ry 8-a) * + †.	100
..	Campden, U-14	160
..	Canaan, L-30	
..	Canada Southern Crossing, (Rys 4-b, 10-a) † § 3 m N E Appin, V-6.	
..	Canard River, X-1	80
..	Canboro, V-13	400
..	Candayville, V-14	100
..	Canfield, U-13, (Rys 4-a, 10-b) * + †.	400
..	Canfield Junction, (Ry 10-b, h) † 7 m E Cayuga, V-13.	
..	Cannamore, Stormont.	
..	Cannifton, Q-22, (Ry 18-f, g) §.	700
..	Canning, T-10	130
..	Cannington, O-16 *	922
..	Cannington Station, P-16, (Ry 18-a) + §	25
..	Canton, R-18	200
..	Canton, see Cashmere, V-5 ..	50
..	Cape Chin, Bruce Co. ☐	
..	Cape Croker, L-10	400
..	Cape Rich, M-11	50
..	Carleton, 4 m S Dundalk Station, I-11	100
..	Carden, N-17	
..	Cardinal, (Ry 10-a) * + § 5 m S W Iroquois, N-29.	
..	Cardwell, R-23	25
..	Cardwell Junction, (Ry 20-b) × 2 m S Caledon East, Q-13.	
..	Cargill, (Ry 10-j) * + † 9 m N E Riversdale, P-8	200
..	Carlholme, Norfolk Co. ☐	
..	Carlisle, U-12	
..	Carleton Place, M-27, (Ry 5-a) * + §	1975
..	Carleton Place Junction, M-27, (Ry 5-a, b) + §.	25
..	Carling, 7 m N W Parry Sound, K-14.	
..	Carlingford, S-8	100

	Towns, etc.—continued.	Pop. '81.
..	Carlisle, T-12	300
..	Carlow, Q-7	200
..	Carlsruhe, P-9	150
..	Carlton, G-14, (Rys 10-a, 26-a) + † §	150
..	Carlton West, York Co., (Ry 19) § ☐	
..	Carluke, U-12	100
..	Carmunneek, 3 m S E Moncrief, R-18.	200
..	Carnarvon, L-18	100
..	Carnegle, O-9	25
..	Carp, L-27	150
..	Carronbrook, R-8, (Ry 10-b) †	800
..	Carrville, R-15	100
..	Carrying Place, (Ry 6-a) § 4 m N W Consecon, R-21.	
..	Carsonby, M-28	175
..	Carswell, 6 m E Renfrew, K-25.	
..	Carteret, 6 m N Magnetawan, I-15.	
..	Carterton, Algoma.	
..	Carthage, R-10	100
..	Cartwright, Q-17	200
..	Cashel, 1 m S Milnesville, Q-15	100
..	Cashion's Glen, M-32.	
..	Cashmere, V-5	50
..	Cashtown 3 m from Avening, O-13..	40
..	Cass Bridge, 2 m N Dunbar, N-30 ..	25
..	Cassburn, 3 m from L'Original, K-32.	300
..	Casselman, L-31, (Ry 2) §.	30
..	Cassels, T-9	30
..	Castle, K-23	50
..	Castleberg, Q-13	100
..	Castleford, K-25	100
..	Castleford Station, K-26, (Ry 5-a) §	
..	Castlemore, R-14	200
..	Castleton, Q-20	300
..	Cataract, R-12, (Ry 8-b, c) †	200
..	Catawaug, Q-25	300
..	Caticart, U-10	300
..	Cavan, Q-8	100
..	Cavanville, 2 m W Cavan, Q-18	90
..	Cawdor, 8 m N E Clareview, P-23 ..	100
..	Cayuga, V-13, (Ry 10-h) * + †	830
..	Cedar Dale, R-17, (Ry 10-a) * §.	400
..	Cedar Grove, R-15	150
..	Cedar Hill, L-26	25
..	Cedar Lake Village, M-23.	
..	Cedar Mills, Cardwell Dist. ☐	
..	Cedarville, P-11	50
..	Centralla, G-7, (Ry 10-l) + †	150
..	Centre Augusta, O-28	100
..	Centreton, Q-20	90
..	Centreville, N-31	150
..	Centreville, P-24	300
..	Centreville, Q-13.	
..	Centreville, U-9, (Ry 20-b) §.	50
..	Chaffey's Locks, 28 m N E Kingston, Q-25.	
..	Chalk River, H-22, (Ry 5-a) + §.	100
..	Chambers, Lennox Co. ☐	
..	Chambliss, P-19	25
..	Chandos, N-20	100
..	Chantry, O-27	400
..	Chapman, P-22	40
..	Chard, Prescott Co. ☐	
..	Charing Cross, X-4, (Ry 4-a) * + †.	154
..	Charleston, P-27	80
..	Charleston Station, Q-13, (Ry 26-a) + ×	300
..	Charlesville, see Haydon, Q-17.	150
..	Charleville, O-29	200
..	Charlinch, Muskoka Dist. ☐	
..	Chatham, W-4, (Ry 10-g) * + †.	7873
..	Chatsworth, N-10, (Ry 26-a) * + × ..	450

<i>Towns, etc.—continued.</i>	Pop. '81.	<i>Towns, etc.—continued.</i>	Pop. '81.
Chaudiere Junction, L-29, (Ry 5-f) §	25	Clydesdale, 5 m N E Chandos, N-20.	
Caecapside, V-12.....	200	Cobble Hill, Oxford Co. •	
Cheddar, M-30.....	100	Cobden, J-25, (Ry 5-a) * + §	200
Cheltenham, R-13, (Rys 8-b, 20-b) + ‡ §	250	Coboconk, N-17 (Ry 18-a) ‡ §	300
Chepstow, O-8.....	150	Cobourg, R-19, (Rys 7-a, 10-a) * + §	4957
Cherry Creek, P-14.....	100	Cockburn Island, Algoma Co. •	
Cherry Grove, 3 m from Thorndale, T-8.....	100	Codrington, Q-20.....	150
Cherry Valley, R-23.....	300	Colbeck, Q-11.....	50
Cherrywood, R-16.....	250	Colborne, R-20, (Ry 10-a) * ‡ §	1079
Chesley, O-9, (Ry 10-d) * +	293	Colchester, Y-1.....	200
Chester, see Doncaster, S-15.		Colchester Station, X-1, (Ry 4-a) + ‡	25
Chesterfield, T-19.....	100	Cold Spring, Q-19.....	250
Chesterville, M-30 •	600	Coldstream, U-7.....	100
Chevalier, 2 m E Stony Point, X-3... 25		Cold Water, N-15, (Ry 18-c) * + §	250
Chevlot, P-8.....	100	Colebrook, P-21, (Ry 19) §	300
Chippawa, V-15, (Ry 4-c) * + ‡	664	Cole Lake, Addington Co. •	
Chippawa Hill, 3 m W Southampton, N-8.....	500	Coleman, 6 m from Toronto, S-13.	
Chiselhurst, Huron Co. •		Coleseu, 8 m N W Meaford, N-11.	
Chisholm, Prince Edward Co. •		Colerain, R-14.....	100
Christie's Corners, Leeds Co. •		Coleridge, P-12.....	200
Christina, 3 m S W Mt Brydges, U-7.		Coles Corners, 2 m N Logieralt, U-4. 75	
Chrysler, M-30.....	350	Colgan, Simcoe Co. •	100
Church Falls, R-12, (Ry 8-b,c) + ‡	200	Collinville, U-4.....	400
Churchill, P-14.....	100	Collingwood, N-12, (Ry 20-a,b) * + × §	4445
Churchville, S-13, (Ry 8-b) ‡	200	Collins Bay, G-10.....	25
Chute au Blondeau, K-33.....	300	Collins Bay, Q-25, (Ry 10-a) + §	150
Clachan, W-5.....	200	Collin's Inlet, see Collins Bay, Q-25. 25	
Claireville, R-14.....	159	Colpoys Bay, L-9 *	50
Clanbrassil, 6 m from Hagersville, V-12.		Colquhoun, Dundas Co. •	
Clandeboye, L-27.....	100	Columbus, Q-16 *	600
Clandeboye, T-7, (Ry 10-l) * + ‡	25	Colwell, (Ry 20-a,f) + × 5 m E Angus, O-13.....	150
Clanricardie, Peterborough Co. •		Comber, X-3, (Ry 4-a) + ‡	300
Clappison, Wentworth Co. •		Combermere, K-22.....	100
Claremont, Q-16 *	400	Comet, 8 m E Amhurstburg, H-1.	
Clarence, K-30 *	250	Commanda, 56 m N Rosseau, K-15.. 100	
Clarence Creek, K-30.....	150	Conboynville, Brant Co. •	
Clarendon, (Ry 14) § 4 m S E Mis- sissippi, N-25.		Concord, 3 m from Thornhill, R-15 . 200	
Clarendon Station, Addington Co. •		Conestogo, S-11 *	500
Clareview, P-23.....	25	Coningsby, 5 m from Erin, R-12..... 50	
Clarke, R-18 *	350	Connaught, M-30.....	600
Clark's, O-28, (Ry 5-b) §	25	Conn, P-11.....	80
Clarksburg, N-11 *	400	Connor, Q-13.....	200
Clark's Crossing, 5 m E Greenbush, O-27.....	25	Conroy, T-8.....	150
Clarkson's, (Ry 10-i) ‡ 3 m S W Port Credit, S-14.		Conroy Farm, Hastings Co. •	
Clark's Station, (Ry 5-b) § see		Consecon, R-21, (Ry 6-a) * + §	400
Clark's, O-28.....	25	Constance, R-8.....	100
Clarksville, P-14.....	200	Conway, R-24.....	500
Claude, R-13.....	130	Cooks, U-13, (Ry 10-b) ‡	25
Clavering, M-9, (Ry 10-d) +	100	Cookstown, P-14, (Ry 20-d) + §	700
Clayton, M-26.....	120	Cocksville, S-14, (Ry 8-a) * + ‡	300
Clear Creek, W-10.....	200	Cooper, O-22.....	100
Clearmont, see Burford, U-11	700	Cooper's Falls, Ontario Co. •	50
Clearville, W-6 *.....	100	Copenhagen, V-8.....	350
Cleary's, M-27, (Ry 5-a) §	25	Copetown, T-12, (Ry 10-g) + ‡	200
Cleveland's 5 m N W Port Carling, L-15.		Copleston, U-4.....	100
Clifford, P-9, (Ry 10-j) * + ‡	722	Corbett, S-6.....	150
Clifton, U-15, (Ry 10-g) + ‡	2347	Corbetton, Grey Co., (Ry 26-a) × •	
Clifton House, U-15, (Ry 10-g) ‡	25	Corbyville, Hastings Co. •	
Clinesville, U-13.		Corinth, V-9, (Ry 10-h) + ‡	150
Clinton, R-7, (Ry 10-b,l) * + ‡ §	2606	Cornabuss, see Markdale, O-11..... 800	
Cloutarf, K-23.....	100	Cornellville, V-10, (Ry 4-a) + ‡	100
Close Mills, Lennox Co. •		Corner's Falls, K-27.	
Clover Hill, P-14.....	100	Cornwall, N-32, (Ry 10-a) * + §	5000
Cloyne, N-23.....	40	Cornwall Centre, N-31.	
Clyde, T-12.....	200	Coreley, Elgin Co. •	
		Corson's Crossing, (Ry 18-a) § 3 m S W Coboconk, N-17.	
		Cornna, U-4 *.....	200
		Corwhin, 6 m from Nassagaweya, S-12.	

Towns, etc.—continued.	Pop. '81.
Cotswold, Q-10.....	175
Cottam, Essex Co. •	
Couchiching, N-16, (Ry 18-c) § ×.....	25
Coulson, N-15.....	150
Courtlee, Durham Co. •	
Courtland, V-10, (Ry 10-h) + +.....	250
Courtright, U-3, (Ry 4-b) * + +.....	500
Coventry, Q-14.....	80
Coverley, C-10.....	200
Cowal, V-7.....	30
Craighurst, N-14 •	150
Craigleith, N-12, (Ry 20-a) ×.....	80
Craigsholme, R-12.....	49
Craigvale, (Ry 20-a) + × see Craigville, O-14.....	200
Craigville, O-14.....	200
Crampton, Middlesex Co. •	
Cranbrook, see Grey, R-8.....	125
Cranston, 8 m W Cayuga, V-13.....	
Cranworth, O-27.....	50
Crathle, U-6.....	25
Crawford, O-10.....	80
Credit, S-14 *.....	160
Crediton, S-7 *.....	160
Creek Bank, R-11.....	40
Creemore, O-13, (Ry 20-b) * + §.....	450
Creighton, N-15.....	100
Creezy, R-23.....	150
Creswell, 7 m N W Little Britain, P-17.....	80
Crieff, S-12.....	50
Crinan, V-6.....	300
Cripplegate, 12 m N E Bracebridge, L-16.....	300
Crofton, R-23.....	80
Cromarty, S-8.....	100
Crombies, (Ry 26-a) × 4 m N Laurel, Q-12.....	
Crookston, (Ry 18-g) § 4 m N E Ivanhoe, P-22.....	
Cross Hill, S-10.....	200
Crossland, N-14, (Ry 20-f) ×.....	50
Croton, 6 m W Thamesville, W-5.....	25
Crowland, V-15.....	50
Crown Hill, 5 m from Barrie, O-14.....	
Croxon's Corners, see Fennells, P-14.....	80
Croydon, P-23.....	100
Cruickshank, M-10.....	100
Crumlin, U-8.....	100
Crysler, M-30 *.....	350
Culloden, V-9.....	300
Cultus, Norfolk Co. •	
Cumberland, K-29 *.....	200
Cumberland Mills, K-29.....	25
Cumming's Bridge, Russell Co. •	
Cumminsville, T-13.....	200
Cumnock, R-11.....	80
Curran, K-31.....	210
Currie, U-10, (Ry 16-d) +.....	140
Curry Hill, M-33.....	25
Cyprus, 12 m N Huntsville, K-17.....	100
Daere, K-24.....	500
Dale, 2 m N Port Hope, R-19.....	25

Towns, etc.—continued.	Pop. '81.
Dalesville, 5 m S E Tottenham, Q-14.....	
Dalhousie Mills, L-32.....	150
Dalkeith, L-32.....	100
Dalmeny, Russell Co. •	
Dalrymple, N-16.....	100
Dalston, O-14.....	80
Damascus, Q-11.....	100
Danforth, R-15.....	50
Danger Point, see Aberfoyle, S-12.....	150
Dante, 4 m N W Bothwell, V-5.....	6
Darbyville, S-12.....	25
Darey, Q-26.....	25
Darling Road Siding, V-13, (Ry 10-h) + +.....	25
Darlington, (Ry 10-a) § 6 m N E Oshawa Station, R-17.....	
Darrell, W-4.....	
Dartford, Q-29.....	100
Dartmore, N-16.....	150
Dashwood, S-7.....	100
Davenport, S-14, (Ry 20-a) + ×.....	120
Davisville, S-15.....	100
Dawn Mills, V-4.....	100
Dawson, M-29.....	25
Day Mills, 14 m N E Thessalon, D-2.....	13
Daywood, M-11.....	50
Dealtown, X-4.....	150
Deans, V-12, (Ry 4-a) + +.....	25
De Crewsville, V-12.....	300
Dee Bank, K-16.....	
Deemerton, 3 m S E Mildmay, P-9.....	100
Deerdock, N-25.....	25
Deerhurst, P-14.....	75
Deer Lake, Peterborough Co. •	
Deer Park, 3 m from Toronto, S-15.....	300
Delaware, U-7 *.....	350
Delaware Stat' V-7, (Ry 4-b) +	
Delhi, V-10, (Ry 0-h) * + +.....	300
Delmer, 2 m E Brownsville, V-9.....	60
Deloro, 8 m N W Madoc, O-22.....	300
Delta, O-27 *.....	400
Demorestville, R-22.....	300
Denbigh, L-23.....	300
Dentfield, T-7.....	100
Dennison, O-25, (Ry 14) §.....	100
Denville, Muskoka District •	
Depot Village, P-24.....	25
Dereham Centre, Oxford Co. •	
Derrynane, Arthur Co. •	
Derrynane, Wellington Co. •	
Derryville, P-16.....	60
Derry West, S-14.....	100
Derwent, U-8.....	150
Desboro, N-10 *.....	50
Deseronto, Q-23, (Ry 1) * + §.....	1670
Deseronto Junction, Q-23, (Rys 1, 10-a) §	
Desert, Algoma Co. •	
Desert Lake, P-25.....	25
Desmond, P-24.....	200
Deux Rivières, G-20, (Ry 5-a) + §.....	87
Devil's Creek, N-18.....	25
Devizes, T-8.....	135
Devon, see Centralia, S-7.....	150
Dexter, V-8.....	60
Diamond, L-27.....	300
Dickens, G-27.....	60
Dickinson's Landing, N-31, (Ry 10-a) * + §.....	300
Diltz, V-13, (Ry 10-h) +.....	25
Dingle, see Brussels, Q-8.....	1600

<i>Towns, etc.—continued.</i>	<i>Towns, etc.—continued.</i>	Pop. '81.
Dingwall, 2 m S E Huron Station, O-7.....	Dundonald, Q-20.....	50
25	Dunedin, O-13.....	100
Dirleton, Carleton Co. *	Dunannon, P-7 *.....	250
Dixie, S-14, (Ry 8-a) + ‡.....	Dunkeld, O-9, (Ry 10-j) ‡.....	60
400	Dunlop, Huron Co. *	
Dixson, Stormont Co. *	Dunney's Rapids, O-22.....	25
Dixon's Corners, N-29.....	Dunville, V-13, (Ry 10-b) * + ‡.....	1808
100	Dunrobin, K-27.....	100
Dobblington, N-9, (Ry 10-d) +.....	Dunrobin, O-18.....	80
40	Dunslane, 5 m W Lucknow, P-8... 100	
Doe Lake, Muskoka District *	Duntroon, O-12.....	100
Dog's Nest, 2 m from Pt. Dover, V-11	Duntroon, O-12, (Ry 20-b) + §	
30	Dunvegan, L-32 *.....	300
Dollar, R-15.....	Durham, O-10, (Ry 10-e) * +.....	1059
35	Dutton, V-3, (Ry 4-a) * + ‡ +.....	630
Deaulxville, Glengarry Co. *	Dutton Station, (Ry 4-a) * + ‡ see	
Domville, Grenville Co. *	Dutton, V-6	
Don, R-15.....	Dyer's Corners, see Lockton, Q-13..	50
150	Dwight, 14 m S E Huntsville, K-17..	20
Doncaster, S-15.....	Dwyer Hill, M-27.....	25
500	Dyer's Bay, 50 m N W Owen Sound, N-10.	
Donegal, R-9.....	Dysart, (Ry 18-c) § 2 m N Ingoldsby, M-18	
56		
Dona Mount, see Toronto, S-15.		
Den Station, S-15, (Ry 10-a) + §.....		
25		
Doon, S-11, (Ry 10-c) + §.....		
150		
Doran, N-25.....		
30		
Dorchester Station, U-8, (Ry 10-g)		
* + ‡.....		
300		
Dore Lake, J-24... ..		
25		
Dorking, R-10.....		
50		
Dorland, 2 m N Adolphustown, R-23.		
Dornoch, 4 m W Beachville, V-9... ..		
50		
Dorset, 30 m from Gravenhurst, M-16.		
Doughtery's, S-9.....		
25		
Douglas, K-24.....		
150		
Douglas, R-11, (Ry 8-c) ‡.....		
400		
Dover South, W-4.....		
100		
Downeyville, P-18.....		
80		
Down Mills, V-4.....		
Downsview, R-14.....		
200		
Dracon, Wellington Co. *		
Drayton, R-10, (Ry 10-j) * + ‡.....		
587		
Dreaney's Corners, see Crumlin,		
U-8.....		
100		
Dresden, V-4 *.....		
1979		
Drew, P-10.....		
50		
Dromore, P-11.....		
100		
Drum, Q-17.....		
125		
Drumbo, T-10, (Rys 8-a, 10-b) * + ‡		
600		
Drummondville, V-15.		
Drummondville West, 2 m S W Clif-		
ton, U-15.....		
1000		
Drumquin, S-13.....		
25		
Drury, 8 m from Barrie, O-14.....		
65		
Dryden, see Palmerston, Q-10.....		
50		
Drysdale, see Drysdaleville, S-6.....		
100		
Drysdaleville, S-6.....		
100		
Dua, W-6, (Ry 4-a) * + ‡.....		
300		
Dulna, (Ry 19-b) * + ‡ see Carron-		
brook, R-8.....		
800		
Dufferin, V-12, (Ry 4-a) ‡.....		
25		
Dufferin Bridge, Muskoka District *		
Duffin's Creek, R-16, (Ry 10-a) § ...		
600		
Dumblane, N-8.....		
100		
Dumfries, Brant Co., (Ry 10-g) *.....		
25		
Dumfries Station, T-11, (Ry 8-a) ‡..		
25		
Dun, O-12.....		
Dunbar, N-30 *.....		
200		
Dunbarton, R-16, (Ry 10-a) * §.....		
150		
Dunboyne, 4 m S Aylmer West, V-8.		
Duncan, O-11.....		
25		
Duncanville, M-30.....		
150		
Dunchurch, Muskoka District *.....		
45		
Duncrief, T-7.....		
75		
Dundalk Station, P-11, (Ry 26-a) * + ×		
700		
Dundas, T-12, (Ry 10-j) * + ‡.....		
3709		
Dundela, N-30.....		
150		
	Eagle, W-6.....	200
	Eagle Lake, L-19.....	80
	Eagle Rock, P-24.....	25
	Ealing, 2 m from London, U-8.	
	Eamer's Corners, N-31.	
	East Caledon, Q-13, (Ry 20-b) + §.....	200
	East Fairfield, O-28.	
	East Hawkesbury, K-31.....	100
	East Linton, 4 m S W Presque Isle, M-10.	
	East London, (Ry 10-a) § 8 m E	
	London, U-8.	
	Eastman's Springs, L-29, (Ry 2) § ...	25
	Easton's Corners, N-28.....	175
	East Oro, N-15.....	60
	Eastville, see Holt, P-15.....	35
	East Williamsburg, N-30... ..	100
	Eastwood, T-19, (Ry 10-g) + ‡.....	100
	Ecclesville, X-3.....	80
	Echo Mines, Algoma Co. *	
	Echo River, Algoma Co. *	150
	Eddystone, Q-19.....	70
	Eden, V-9.....	350
	Eden Grove, see Pinkerton Station, O-9.	
	Eden Mills, S-12.....	500
	Edgar, O-14 *.....	150
	Edgar, Essex Co., (Ry 4-a) ‡	
	Edgecombe, 3 m W Millbank, R-9... ..	100
	Edge Hill, 4 m from Durham, O-10.	
	Edgeley, R-14.....	150
	Edgeworth, X-3.....	50
	Edgington, 9 m W Seguin Falls, J-15.	
	Edmonton, R-13, (Ry 8-b) ‡.....	300
	Edwardsburgh, O-25, (Ry 10-a) §... ..	300
	Edwardsville, 7 m N W Listowel,	
	Q-9.....	100
	Effingham, U-14.....	200
	Eganville, K-24 *.....	500
	Egbert, 3 m W Thornton, P-14.....	50
	Egerton, P-11.....	80
	Eglington, R-15.....	500
	Egmondville, R-7 *.....	700
	Egremont, P-10.....	24

	<i>Towns, etc.—continued.</i>	Pop. '81.
81.	Elfrid, V-6, (Ry 10-h) †	25
50	Ekfrid Station, U-6, (Ry 4-b) †	25
100	Elarton Salt Works, U-5, (Ry 10-m) †	25
250	Elba, P-12	100
60	Elcho, V-14	25
	Elder, P-13	70
25	Elder's Mills, R-14	
808	Eldon, O-17, (Ry 18-a) + §	40
100	Eldorado, O-22, (Ry 6-b) + §	100
80	Elford, Essex Co. ¶	
100	Elfrida, U-13	150
100	Elgin, O-26	350
300	Elginburgh, Q-25	70
059	Elginfield, T-7	350
630	Elgin Mills, see Richmond Hill, R-14	
	Ella, 5 m N E Weston, R-14	11
	Ellmville, S-7	100
50	Elizabethville, Q-18	30
20	Ellaton, 7 m N W Simcoe, V-11	60
25	Ellengowan, O-9, (Ry 10-j) †	100
-10.	Ellesmere, R-15	70
-18	Elliott, N-26	45
	Ellisville, P-26	150
	Elm, L-27	
	Elmbank, S-14	70
	Elm Grove, P-14	50
	Elmira, R-10 *	1000
	Elmora, T-9	25
200	Elmvale, N-14, (Ry 20-f) † ×	100
80	Elmwood, O-9, (Ry 10-a) * +	300
25	Elora, R-11, (Rys 8-c, 10-j) * † ‡	1387
	Elphin, N-25	31
	Elsinore, N-9	50
200	Ely, Muskoka District	
	Emberson, 5 m E Huntsville, K-17	
100	Embro, 3 m S E Bennington, T-8 *	616
10.	Embran, L-30	100
	Emerald, R-24	100
	Emery, (Ry 26-a) × 5 m N Weston, H-22	
	Emily Mine, N-22, (Ry 6-b) §	
25	Emmet, Renfrew Co. ¶	
175	Emsdale, 45 m from Gravenhurst, M-16 *	50
60	Enfield, Q-17	80
85	Engine House, (Ry 4-a) † 1 m E Amherstburgh, X-1	
100	English River, B-24, (Ry 5-e) ☉	
80	Enniskillen, Q-17	250
150	Ennismore, P-18	190
70	Ennotville, see Hewgill, R-11	90
350	Enterprise, P-24, (Ry 19)	250
9.	Enterprise Landing, Algoma Co. ¶	
500	Epping, N-11	50
50	Epsom, Q-16	100
00	Eramosa, R-12	250
	Erbsville, S-10	25
150	Erie, V-12	100
50	Erin, R-12, (Ry 8-c) * † ‡	700
	Erinsville, P-23	70
200	Ernestown, Q-21, (Ry 10-a) + §	150
200	Erroll, T-4	
	Escott, P-27	100
00	Eskdale, Bruce Co. ¶	
200	Esquésing, 3 m N W Ash Grove, S-15	250
50	Essex Centre, X-2, (Ry 4-a,d) * † ‡	700
80	Essonville, Peterborough Co. ¶	
200	Ethel, Q-8	200
00	Ethel Station, R-8, (Ry 10-k) † ‡	25
24	Etrick, (Ry 10-l) 4 m S E Elderton Station, T-7	

<i>Towns, etc.—continued.</i>	Pop. '81.
Engenia, O-11	100
Evelyn, U-8	80
Everett, P-13, (Ry 20-b) † §	200
Eversley, Q-15, (Ry 20-a) ×	150
Everton, R-12	250
Exeter, S-7, (Ry 10-l) * † ‡	1725
Fairbank, 3 m E Weston, R-14	
Fairfield, O-28, (Ry 5-b) §	25
Fairfield, see Troy, F-12	150
Fairfield East, O-28	191
Fairfield Plain, U-11	70
Fairholme, Muskoka Dis. † ¶	
Fairmonnt, near Meaford, N-11	100
Fair Valley, 5 m S Cold Water, N-15	50
Fairview, R-13	75
Fairview, T-9	25
Falding, K-14	50
Falkenberg, K-16	60
Falkirk, T-7	200
Falkland, T-11	60
Fallbrook, N-26	125
Fallowfield, L-28	100
Faraday, Hastings Co. ¶	
Farewell, Wellington Co. ¶	
Farmersville, O-27 *	700
Farmington, Q-12	60
Farguhar, S-7	100
Farran's Point, N-31, (Ry 10-a) * §	300
Fawkhams, N-16	25
Fawn, 3 m N Atherly, N-16	25
Feeder, V-14, (Ry 10-b) †	25
Feeder Siding, Welland Co. ¶	
Fellows, 5 m N Bath, Q-21	25
Fells, (Ry 18-e) § 5 m N E Fenelon Falls, O-18	
Felton, M-30	50
Fenaghvale, L-31	100
Fenella, Q-20	95
Fenelon Falls, O-18, (Ry 18-e) * † §	1155
Fennells, P-14	80
Fenwick, V-14	125
Fergus, R-11, (Rys 8-c, 10-j) * † ‡	1733
Ferguson, 5 m N Komoka, U-7	80
Ferguson's Falls, M-26	75
Fergusonvale, N-14	200
Fermoy, O-25	30
Fernhill, U-7	50
Ferry Point, Q-22	200
Fesserton, (Ry 18-e) § 3 m W Cold-water, N-15	500
Fetherston, Muskoka District ¶	
Feversham, O-12	100
Fielding, Middlesex Co. ¶	
Fingal, V-7 *	700
Finger Board, Victoria Co. ¶	
Fintona, P-13	
Fish Creek, T-8	25
Fisher's Mills, 1 m from Hespeler, S-11	100
Fisherville, V-12 *	150
Fitzroy Harbor, K-27	300
Five Stakes, see Talbotville V-7	70
Flamboro Centre, Wentworth Co. ¶	

<i>Towns, etc.—continued.</i>	Pop. '81.	<i>Towns, etc.—continued.</i>	Pop. '81.
Fleetwood, P-18	100	Galetta, see Hubbell's Falls, K-27	100
Flesherton, O-11 *	350	Gallingertown, N-30	50
Flesherton Station, O-11 (Ry 26-a) + *		Galt, T-11, (Rys 8-a, 10-c, j) * + † §	5187
Fletcher, X-3, (Ry 4-a) † ‡	200	Galway, N-18	30
Flinton, O-23	100	Gamebridge, O-16 (Ry 18-c) §	32
Flora, R-10	100	Gananoque, Q-26, (Ry 9) * + §	2871
Floradale, see Flora, R-10	100	Gananoque Station, Q-26, (Rys 9, 10-a) §	25
Florence, V-5 *	450	Garafraza, R-12, (Ry 8-c) * †	400
Florence Vale, 2 m N Kelvin, U-10	25	Garden Hill, Q-18, (Ry 18-c) † §	350
Foley, R-17	50	Garden Island, Q-25	495
Fonthill, V-15 *	300	Garden River, 25 m N W Bruce Mines, D-2	500
Fordwich, Q-9, (Ry 26-b) * † ×	500	Garfield, Huron Co. *	
Fordyce, Q-8	100	Garnet, V-12, (Ry 20-b) §	100
Forest, T-5, (Ry 10-a) * + §	500	Garretton, Grenville Co. *	
Forester's Falls, J-25	150	Garrison, W-15	25
Forest Mills, 9 m N Napanee, Q-23	80	Garryowen, 3 m S E Annan, M-10	
Forestville, W-10	300	Gelet, 42 m N E Lindsay, P-17	100
Forfar, O-26	100	Gemley, M-24	50
Forks of Credit, R-13, (Ry 8-b) ‡	25	Georgetown, R-13, (Rys 10-a, 20-b) * + §	1471
Forks Road, 4 m E Moulton Station, V-13	35	Georgetown, 2 m S Tweed, P-22	180
Formosa, P-9	1000	Georgina, P-15 *	500
Fort Albany, A-34		German Mills, S-11, (Ry 10-c) §	100
Fort Erie, W-16, (Rys 4-a, c, 10-b, h)	722	Gesto, Essex Co. *	
Fort Temiscamungue, F-36		Glbraltar, N-12	40
Fort William, D-25, (Ry 5-e) ∅	500	Gibson, 6 m N W Simcoe, V-11	
Foster's, N-27	25	Gibson, Simcoe Co. *	
Four Corners, (Ry 6-a) § 2 m E Hillier, R-22		Gilbert's Mills, R-22	60
Fournier, L-31	211	Gilford, P-14, (Ry 20-a) + ×	200
Fowler's Corners, 6 m S W Peterborough, P-19	36	Gill, 2 m from Canfield, V-13	
Foxboro, Q-22, (Ry 18-f, g) † §	200	Gillie's Hill, O-9	25
Foxmead, (Ry 18-e) § 11 m N Orillia, N-15	84	Gladstone, O-28, (Ry 10-a) §	25
Foymont, K-23	25	Gladstone, U-8, (Ry 8-a) ‡	35
Frampton, 1 m from Dorchester Station, U-8	100	Glamis, O-8 *	200
Frankford, Q-21 *	500	Glamorgan, 4 m N Elizabethville, Q-18	
Frank Hill, P-18	25	Glandue, 4 m E Little Britain, P-17	
Franklin, P-18, (Ry 18-c) † §	300	Glanford, U-12, (Ry 20-b) §	50
Franktown, M-27, (Ry 5-b) † §	300	Glanflore, N-21	25
Frankville, O-27	300	Glanworth, U-8, (Ry 10-c) ‡	100
Fraserburgh, Muskoka District *		Glascott, O-10	55
Fraser's Corners, R-14	25	Glasgow, Q-13	30
Frazerville, Q-18, (Ry 18-d) §	100	Glasgow, Q-16	100
Fredericksburgh, V-10	300	Glastonbury, N-23	1000
Fredericksburgh Station, Q-21, (Ry 10-a) §	25	Glen Alda, Peterborough Co. *	
Freeleton, T-12	150	Glenallen, R-10 *	400
Freeman, 7 m from Hamiltou, T-13	150	Glenannan, Huron Co. *	
Freeport, S-11	100	Glenannan, Thruberry Co. *	
Freiburgh, S-11	100	Glenarm, O-17	75
French Bay, 4 m W Allenford, N-9		Glen Becker, Dundas Co. *	
Frenchman's Bay, 2 m S Dumbarton, R-16	100	Glen Buell, Brockville Co. *	
Frogmore, S-13	150	Glenburnie, Q-25	300
Frome, V-7	30	Glencairn, O-13, (Ry 20-b) † §	200
Fullarton, S-8	150	Glencoe, see Glencoe Junction, V-6 *	801
Fuller, 3 m N Moira, P-22		Glencoe Junction, V-6 (Ry 19-g, h) * + † ‡	801
Fulton, U-13	179	Glen Colin, 3 m N E Aylmer West, V-8	25
		Glendale, Middlesex Co. *	
		Glen Donald, N-32	25
		Glen Dower, P-25	50
		Glenden, Grey Co. *	
		Glen Farrow, Huron Co. *	
		Glen Gordon, Glengarry Co. *	
		Glen Huron, O-12	150
		Glen Huron Station, Simcoe Co., (Ry 20-b) §	
		Glenila, 20 m N McKellar, J-14	
		Glen James, L-32	25
		Glen Lewis, O-22	25
		Glenlyon Station, 2 m S Mildmay, P-9	150
Gads Hills, S-9, (Ry 10-a) +	100		
Galbraith, M-26	25		

<i>Towns, etc.—continued.</i>	Pop. '81.	<i>Towns, etc.—continued.</i>	Pop. '81.
Hall's Bridge, O-19	50	Hayesland, T-12	100
Hall's Glen, O-20	25	Haysville, S-10	150
Hall's Mills, Lanark Co. ♀		Haywards Falls, O-10	25
Hallville, M-29	100	Hazledean, L-28	100
Hallville, S-12		Headford, R-15	300
Halston, Hastings Co. ♀		Head Lake, N-17	25
Halconville, see Hallville, M-29	100	Head Levelle, (Ry 5-a) § ½ m W Deux Rivieres, G-20	
Hamburg, Q-24	50	Heatcote, N-11	70
Hamburg, (Ry 10-a) † § see New Ham- burgh, S-10		Heather, Lambton Co. ♀	
Hamilton, T-13, (Rys 10-g, l, 20-b) * † §	35961	Heck's Corners, see Spencerville, N-29	
Hamlet, N-26	25	Heckston, N-29	100
Hammond, R-9	50	Heekley, Q-13	
Hampden, 6 m N E Ayton, P-9		Heldeburgh, S-10	500
Hampshire Mills, N-15		Hemlock, 5 m from Port Burwell, W-9	95
Hanptead, 2 m S E Lishon, S-9	30	Henderson, see Tilbury, H-3	
Hampton, R-17 ♀	400	Hendrick, 5 m N W Mount Brydges, U-7	
Handsville, see Starton, P-13		Hendrie, (Ry 20-f) × 4 m N Mine- slug, O-14	
Hanlan, 4 m E Meadowvale, S-13	75	Henfryn, (Ry 10-k) † 4 m S E Ethel Station, R-8	25
Hannon, V-13	50	Henry, K-32	200
Hanover, P-9, (Ry 10-d) * † +	1200	Hensall, (Ry 10-l) * † † 6 m N Exeter, S-17	500
Harcourt, K-25	100	Hepworth, M-9, (Ry 10-d) +	150
Hardinge, N-23	40	Hereward, Q-11	25
Harkaway, N-11	200	Herron, 9 m N L'Amable, M-21	
Harlem O-27	75	Heron Bay, D-29	
Hurley, V-10, (Ry 10-p) †	200	Hespeler, S-11, (Ry 10-j) * † †	698
Harlock, R-8	25	Hewgill, R-11	90
Harlowe, Frontenac Co. ♀	200	Hlawatha, Q-19	135
Harlowe, 7 m from Cloyne, N-23		High Falls, L-25	75
Harmony, S-9	50	High Falls, L-31, (Ry 2) §	30
Harold, P-21	150	Highfield, R-14	70
Harper, N-26	75	Highgate, W-5, (Ry 4-a) * † †	250
Harper's Corners, see Harper, N-26		Highland Creek, R-15 *	500
Harpley, S-6	50	High Park, 4 m W Toronto, S-15	
Harrietsville, (Ry 8-a) † 3 m N E Gladstone, U-8	120	High Point, Ontario Co., (Ry 18-e) §	
Harrington West, T-8	300	Hilda, Q-22	100
Harrisburgh, T-11, (Ry 10-g, j, p) † †	250	Hillier, R-22, (Ry 6-a) † §	100
Harrison's, O-14, (Ry 20-b, f) § ×	60	Hillsborough, T-5	50
Harrison's Corners, M-31	25	Hillsburgh, R-12, (Ry 8-c) * † †	400
Harriston, Q-10, (Rys 10-d, j, 26-b) * † † +	1772	Hillsdale, N-11 *	400
Harrow, N-23	25	Hills Green, S-7	50
Harrow, Y-1	300	Hilly Grove, Algoma Co. ♀	
Harrowsmith, P-21, (Ry 14) † §	300	Hilton, Q-20	120
Hartfell, Muskoka Dist. ♀		Hinch, P-21	150
Hartford, U-11	100	Hinchinbrook, (Ry 14) § 7 m N Ver- ona, P-24	
Hartington, (Ry 14) § 18 m from Klingston, Q-25	40	Hintonburg, Carleton Co. ♀	
Hartley, O-17	150	Hoards, (Ry 18-f) § 7 m W Sterling, P-21	
Hartman, Q-15	100	Hoasle, N-30	100
Hartmere, 38 m N Madoc, O-22		Hoath Head, N-10	50
Harwich, W-5	150	Hobart, 14 m from Orillia, N-15	
Harwich Centre, Kent Co. ♀		Hockley, 14 m from Moro Road, R 13	60
Harwich Station, W-5, (Ry 4-a) †	25	Holbrook, V-10	100
Harwood, Q-19, (Ry 7-a, b) † §	400	Holland Corners, see Arnott, N-10	75
Hastings, P-50, (Ry 18-f) * † §	692	Holland Landing, Q-15, (Ry 20-d) * † ×	580
Hatchley, (Ry 10-p) † 3 m S W Har- ley, U-10		Hollen, R-10 *	500
Haultain, O-20	200	Holloway, Hastings Co., (Ry 18-g) §	
Havelock, P-20	50	Holly, O-14	25
Hawkesbury, K-32 *	1920	Holly Park, York Co. ♀	
Hawkestone, O-15, (Ry 20-c) † ×	70	Holmedale, U-11, (Ry 10-p) †	50
Hawkesville, S-10	400	Holmesville, R-7, (Ry 10-b) †	100
Hawley, 7 m from Napanee, Q-23		Holstein, P-10	200
Hawthorne, L-29, (Ry 2) §	25	Holstein Station, P-10, (Ry 10-e) † †	
Hawtrey, U-10, (Rys 4-a, 10-d) † † +	100	Holt, P-15	35
Hay, S-7	125	Holyrood, P-8	300
Hay Bay, R-23	25	Homer, U-15	150
Haydon, Q-17	150		

	<i>Towns, etc.—continued.</i>	Pop. '81.
100	Honeywood, P-12	40
150	Hoodstown, 40 m from Gravenhurst, M-16	
25	Hope Bay, 9 m N Colpoys Bay, L-9	40
100	Hopetield, K-22	300
200	Hope Ness, 6 m from Colpoys Bay, L-9	
25	Hopetown, M-26	50
	Hopeville, P-11	200
70	Hornby, (Ry 8-a) ‡ 3 m N Upper Hornby, S-13	100
29.	Horn Castle, Victoria Co. *	
100	Horning's Mills, P-12 *	200
	Horse Shoe Bridge, M-18	25
500	Hotspur, 16 m from Haliburton, M-19	450
	Houghton, W-9	200
95	Houneys Rapids, 15 m N Cohoconk, N-17	25
J-7.	Hoysville, S-10	
	Howe Island, Q-26	100
	Hubbell's Falls, K-25	100
	Hudson Bay, F-7	25
25	Hullsville, V-12	200
200	Hulls ville Station, V-12, (Ry 20-b) x	25
	Hultonville, S-13	
500	Humber, R-14	300
150	Humberstone, V-15, (Ry 10-r) † ‡	1100
25	Humber Summit, R-14 (Ry 26-a) x	
	Humsden, Q-14	50
698	Hunsdon, Q-14	50
90	Huntersville, L-26	25
135	Huntley L-27	50
75	Huntsville, K-17 *	500
30	Hurdman's Bridge, 2 m from Ottawa, L-28	100
70	Hurdville, J-14	25
250	Huron Station, O-7, (Ry 10-k) †	25
500	Huston, R-19, (Ry 10-j) †	120
	Huttonville, S-13	250
	Hybla, Hastings Co. *	
100	Hyde Park Corner, U-7, (Ry 10-l, m) † ‡	270
100		
50		
400		
400		
50		
120		
150		
	Ida, P-18	40
	Ilderton, T-7	100
	Ilderton Station, T-7, (Ry 10-l) † ‡	250
	Ilfracombe, Muskoka Dist *	
21.	Indiana, V-12	200
100	Indian River, P-19	160
50	Indian Village, 2 m S Hlawathia, Q-19	25
60	Indianville, P-17	25
100	Ingersoll, V-9, (Rys 8-a, 10-g) * † ‡	4318
75	Inglis Falls, 3 m S Owen Sound, N-10	25
580	Ingoldsby, M-18, (Ry 18-e) §	30
500	Inistloge, O-11	100
25	Inkerman, K-31	25
	Inkerman, N-29	300
50	Innerkip, T-9	200
165	Innerkip Station, T-10, (Ry 8-a) †	25
200	Innisfil, P-14	150
	Innisville, M-26	300
35	International Bridge, Welland Co. *	
300	Inverary, P-25	100
150	Inverhaugh, Wellington Co. *	
	Inverhuron, O-7	400

<i>Towns, etc.—continued.</i>	Pop. '81.
Invermay, N-9 *	150
Inwood, U-5, (Ry 4-b) † ‡	25
Iona, V-7 *	400
Iona Station, V-7, (Ry 4-a) † ‡	25
Ireland, see McGillivray, T-7	300
Irem, Dundas Co. *	
Iris, Simcoe Co. *	
Irish Creek Station, N-27, (Ry 5-b) † §	750
Iron Dale, Victoria Co. *	
Iroquois, N-29, (Ry 10-a) * §	1200
Islay, O-17	
Islington, S-14	200
Islington, (Ry 2-a) † ‡ 6 m N E Cooks- ville, S-14	
Ivan, Middlesex Co. *	
Eanhoe, P-22, (Ry 18-g) §	500
Ivy, O-14	100
Jackson, N-10	33
Jackson's Point, P-15, (Ry 18-b) §	
Jack Vale, L-28	175
Juffa, Elgin Co. *	
Jamestown, 5 m N Brussels, Q-8	25
Janetville, Q-17	100
Jarvisburg, 16 m N Rosseau, K-15	150
Jarrutt's Corners, N-15	40
Jarvis, V-12, (Rys 10-h, 20-b) * † ‡ §	900
Jasper, N-27, (Ry 5-b) §	750
Jefferson, York	
Jelly's, O-28, (Ry 5-b) §	25
Jennette's Creek, X-3, (Ry 10-g) †	50
Jericho, 5 m S E Ravenswood, T-5	200
Jersey, P-15	50
Jerseyville, T-12	150
Jessopville, Grey Co. *	
Jocelyn, 19 m W Bruce Mines, D-2	
Johnson, M-11	25
Johnson's Mills, S-6	100
Johnstown, O-29	200
Jones Falls, P-26	
Jordan, U-14, (Ry 10-g) * † ‡	200
Jordan Station, U-14 (Ry 10-g) †	250
Josephsburgh, 4 m from Petersburg, S-10	75
Juddhaven, 6 m S Rosseau, K-15	40
Jura, T-5	50
Kagawong, Algoma Co. *	
Kalidar, O-23	50
Kaministiquia, C-25, (Ry 5-e) ☉	
Kars, M-28	75
Kasterville, 3 m W Stratford, S-9	50
Katrina, 20 m from Huntsville, K-17	50
Katesville, 2 m S W Strathroy, U-6	150
Keady, W-10	35
Kearney, 24 m from Huntsville, K-17	
Keatsville, Muskoka Dist	100
Keenansville, Q-13	200
Keene, Q-19, (Ry 18-f) * §	400
Keene Station, Q-19	25

<i>Towns, etc.—continued.</i>	Pop. '81.	<i>Towns, etc.—continued.</i>	Pop. '81.
Keeville, Q-13.		Knapdale, V-5.	25
Kelth, V-4.	25	Knatchbull, S-12.	25
Kelly's, P-18, (Ry 18-c) §.	25	Kohler, 3 m S W Canfield, V-13.	42
Kelvin, U-10.	300	Komoka, U-7, (Ry 10-g,m) * + §.	150
Kemble, M-10.	50	Korah, Algoma Co. *	
Kemptville, N-28, (Ry 5-f) * + §.	1188	Kosuth, S-11.	150
Kendall, Q-18.	210		
Kendallworth, Q-11 (Ry 26-b) §.	50	Lady Bank, 5 m N W Maxwell, O-12.	
Kenmor, M-29.	300	La Fontaine, M-13.	200
Kennaway, 15 m W Maynooth, L-21.	75	Laggan, L-32.	100
Kensal, S-7, (Ry 10-l) ‡.	25	Lake Charles, Grey Co. *	
Kensington, West side of London, U-8.		Lake Dore, J-24.	40
Kent Bridge, W-4.	50	Laketfield, P-19, (Ry 18-d) * + §.	1200
Kenyon, (Ry 2) § 7 m W Alexandria, L-32.		Lakehurst, O-19.	25
Kerwood, U-6, (Ry 10-m) + ‡.	150	Lakelet, P-9.	100
Kerry, L-3.	80	Lake Opinicon, P-25.	265
Kertch, T-5.	75	Lakeside, T-8.	200
Keswick, P-15.	125	Lake Tallown, 27 m from Mattawa, F-19.	
Kettleby, Q-14.	125	L'Amable, M-21.	65
Kettleby Mills, see Kettleby, Q-14.		L'Amroux, R-15.	270
Keyser, T-6.	210	Lambeth, U-7.	300
Khiva, 12 m W Exeter, S-7.	50	Lambton Mills, S-28, (Ry 8-a) * + ‡.	350
Kilbride, S-11.	200	Lambush, 5 m N E Hanover, P-9.	
Kilgortie, Shucoc Co. *		Lamon, Middlesex Co. *	137
Killaloe, Renfrew Co. *		Lanark, M-26 *	752
Killarney, G-9.	300	Lancaster, M-32, (Ry 10-a) * + §.	900
Killean, S-12.	250	Lancelot, 29 m from Gravenhurst, M-16.	100
Killerby, V-8.	25	Lanes, 7 m S W Lucknow, P-18.	100
Killyleagh, 3 m from Thornton, P-14.		Lanesville, P-7.	25
Kilmanagh, R-13.	40	Lang, P-19.	175
Kilmarnock, N-27.	50	Langford, V-12.	150
Kilmartin, U-6.	150	Langside, P-8.	100
Kilmours, K-27.	100	Langstaff, R-15.	125
Kilray, Essex Co. *		Langton, V-10.	100
Kilsyth, N-9.	80	Lansdown, P-27, (Ry 10-a) * + §.	300
Kilworth, 3 m N E Komoka, U-7.	50	Lansing, R-15.	400
Kimball, Lambton Co. *		Largie, V-6.	100
Kimberley, O-11.	25	Laskay, Q-14.	200
Kilburn, L-27.	100	La Salette, Norfolk Co., (Ry 10-d) * +	
Klenerdine, O-7, (Ry 10-k) * + ‡.	2876	Lathmer, 15 m from Kingston, Q-25.	
Klog, Q-11, (Ry 20-a) * + ×.	100	Latona, O-10.	200
Klug Creek, Q-14.	50	Latta's Mills, see Plainfield, D-22.	300
Klughorn, Q-14.	50	Laundersville, S-10.	40
Kluglake, V-9.	50	Laurel, Q-12.	85
Klugsbridge, P-7.	100	Laurel Station, Wellington Co., (Ry 26-a) ×.	
Klugsburgh, Ontario Co. *		Lavant, M-25.	100
Klugsfote, 5 m S Ventry, P-11.		La Vase, Muskoka Dist. *	
Klugsford, Q-23.	100	Lavender, O-12.	50
Kingsmill, V-8, (Ry 4-a) + ‡.	65	Lawrence, V-7, (Ry 10-h) + ‡.	25
Kingston, Q-25 (Rys 10-a, 14) * + ‡ §.	14691	Lawrence Station, (Ry 10-h) ‡ see Lawrence, V-7.	
Kingston M. Co., C-26.	150	Lawrenceville, U-15.	25
Kingsville, O-11.	25	Layton, P-16.	25
Kingsville, Y-1.	861	Leadbury, Huron Co. *	
King's Wharf, Victoria Co. *		Leamington, Y-2 *.	1411
Kinkora, S-9.	30	Leakdale, P-16.	100
Kinloss, P-8.	100	Leavens, see Bayview, N-11.	40
Kinlough, P-8.	150	Lebanon, R-10.	80
Kilmount, N-18, (Ry 18-e) * + §.	200	Le Breton Flats, suburb of Ottawa, L-28.	2000
Kinnaird, Lambton Co. *		Leckie, 6 m S E Sarnia, T-4.	
Kinsale, R-16.	50	Le Falvre, Prescott Co. *	
Kintall, P-6.	70	Le Foulon, 2 m E St. Eugene, L-33.	25
Kintore, 6 m S W Nissouri, T-8.	100		
Kippen, S-7, (Ry 10-l) ‡.	100		
Kirby, R-12.	50		
Kirkfield, O-17 *.	100		
Kirkfield Station, O-17, (Ry 18-a) + §.	25		
Kirk Hill, L-32.	75		
Kirkton, S-7.	145		
Kirkwall, T-12.	50		
Klineburg, R-14, (Ry 26-a) * + ×.	500		
Kloks Station, G-19, (Ry 5-a) + §.			

	Towns, etc.—continued.	Pop. '81.
81.	Lefroy, P-14, (Ry 20-a,e) * + §	300
25	Lehman's Landing, Algoma Co. *	
42	Lehster, P-23	70
150	Leith, M-10	150
	Leitrim, Russell Co. *	
150	Lemieux, L-31	25
	Lemonville, Q-15	100
	Lennox, P-14	75
	Leskard, Q-18	145
	Leslie, S-15	1000
	Leslie's, Wentworth Co., (Ry 8-a) †	
	Lethbridge, M-16, (Ry 20-c) ×	10
	Letterkenney, 65 m from Renfrew, K-25	
	Lewisham, Ontario Co. *	
	Lewisville, W-4, (Ry 10-g) †	100
	Lidcote, Kent Co. *	
	Lleury, T-6	75
	Lifford, Q-18	100
	Lilly Lake, 7 m N W Manitowang, H-8	400
	Lilly Oak, 10 m S E Chatsworth, N-10	
	Limehouse, S-12, (Ry 10-a) + §	600
	Lime Lake, P-23	50
	Linden Valley, 6 m N W Lindsay, P-17	
	Lindsay, P-17, (Ry 18-c,e) * + † §	5080
	Lines Corners, V-10	25
	Linkoping, C-25, (Ry 5-g) ☉	
	Linksville, see Mill Haven, Q-24	50
	Linton, 17 m from Aurora, Q-14	
	Linwood, R-10	400
	Lion's Head, Bruce Co. *	200
	Lisadell Station, Q-9	200
	Lisbon, S-9	100
	Lisburn, O-7	50
	Lisle, (Ry 20-b) + § 7 m N W Ever- ett, P-13	175
	Liston, Q-14	
	Listowel, Q-9, (Ry 10-d,k) * + † §	3688
	Little Britain, P-17	304
	Little Current, F-8 *	200
	Little Rideau, K-33	200
	Liverpool Market, 3 m from Duffin's Creek, R-16	250
	Lloydtown, Q-14 *	400
	Lobo, 2 m N Coldstream, U-7	500
	Lochalsh, 8 m from Lucknow, P-8	16
	Loch Garry, M-32	100
	Lochiel, L-32	66
	Lochinvar, 25 m from Riviere Raisin, M-32	50
	Loch Winnock, K-26	25
	Locksley, J-24	25
	Lockton, Q-13	40
	Lockville, N-29	100
	Lodi, Stormont Co. *	
	Logierait, U-4	50
	Lombardy, M-27	150
	Londesborough, Q-7, (Ry 10-l) + †	250
	London, U-8, (Ry 10-f,g,l,m,o) * + † §	19746
	London East, (Ry 10-g) * + † § adjoining the city of London, U-8	3500
	Longford, (Ry 20-c) × see Longford Mills, N-16	
	Longford Mill, N-16, (Ry 20-c) + †	
	Long Island Lock, L-28	350
	Long Lake, O-21	25
	Longwood, V-6	250
	Longwood Station, U-6, (Ry 10-g) + †	150
	Lonsdale, 4 m N Marysville, Q-23	250
	Loretto, P-13	90
	L'Original, K-32 *	853

	Towns, etc.—continued.	Pop. '81.
	Lorne, O-7	25
	Lorneville, O-17, (Ry 18-a,c) + §	25
	Lorraine, P-14	25
	Lotus, Q-17	200
	Longborough, P-25	450
	Louisa, Grey Co. *	
	Louisville, W-4	100
	Lourds, Russell Co. *	
	Lovatt, O-8	25
	Lovering, Simcoe Co. *	
	Lowbanks, V-14	140
	Lower Hornby, S-13	25
	Lower Point, I-25	
	Lowlands, 6 m from Inwood, U-5	
	Lowville, S-13	150
	Lynn, T-7, (Ry 10-a) * + §	976
	Lacknow, P-8, (Ry 10-k) * + †	718
	Lamley, S-7	200
	Lanenburg, N-31	120
	Lurgan, P-11	100
	Luther, Q-11 *	150
	Luther Station, Wellington Co., (Ry 26-b)	
	Lutherville, Brockford Co. *	
	Luton, V-8	70
	Luttred, 1 m E Essex Centre, X-2	
	Lyn, P-2, (Ry 10-a) * +	300
	Lynden, T-12, (Ry 10-g) * + †	400
	Lynhurst, P-27	200
	Lyncdock, V-10 *	250
	Lynn Valley, V-11	
	Lynnville, V-11	90
	Lyns, 3 m N W Springfield, V-8	700
	Maberley, N-25 (Ry 14) §	100
	Mabeth, L-33	25
	Mackey's, G-22, (Ry 5-a) + §	
	Mackey's Mills, Nipissing Dist. *	
	Mackey's Station, Renfrew Co., (Ry 5-a) § *	
	Macton, R-10	25
	Maclellan, R-13	150
	Madina, P-15	125
	Mudoc, O-22, (Ry 18-g) * + §	1065
	Madrid, K-23	25
	Magnetawan, I-15 *	207
	Maguire, Middlesex Co. *	
	Maldstone, X-1, (Ry 4-a) †	125
	Maitland, O-28, (Ry 10-a) + §	250
	Maitlandville, 1 m S Goderich, Q-7	150
	Malakoff, M-28	100
	Malcolm, O-9	85
	Mallorytown, P-27, (Ry 10-a) + §	300
	Malone, O-21	500
	Malta, M-16	
	Malton, R-14, (Ry 10-a) + §	350
	Malvern, R-15	150
	Manchester, Q-16, (Ry 18-e) * + §	200
	Manchester, see Amherst, S-13	200
	Manandamin, T-4, (Ry 10-m) †	200
	Manilla, P-17 *	500
	Manilla Station, P-17, (Ry 18-a,e) + † §	
	Manitowaning, H-8 *	600
	Mannheim, 4 m S E Petersburg, S-10	100
	Manotick, M-28 *	400

<i>Towns, etc.—continued.</i>	Pop. '81.	<i>Towns, etc.—continued.</i>	Pop. '81.
Manotick Station, M-29, (Ry 5-f) §..	25	McIntosh Mills, 7 m from Mallory-	
Mansfield, P-13.....	70	town, P-27.....	75
Munsewood, (Ry 20-b) † 4 m N Mil-		McIntyre, O-12.....	
ton, S-13.....		McIver, Bruce Co. ♣	
Manvers, see Ballydntf, Q-18.....	80	McKellar, J-14 *.....	150
Maple, 2 m S Teston, R-14 *		McKinlay, Lanark Co. ♣	
Maple Grove, 4 m from W Cornwall,		McMartin's Point, Nipissing Dist. ♣	
N-32.....	100	McPhail, Lanark Co. ♣	
Maple Hill, O-9.....	100	McRae's, (Ry 8-a) † 15 m N E Galt, T-11	
Maple Island, Muskoka Dist. ♣		Mendowvale, S-13, (Ry 8-b) * + †.....	250
Maple Lake, 18 m from Minden, M-18	480	Meaford, N-11, (Ry 20-a) * + ×.....	1866
Maple Leaf or Sageville, 1 m from		Mecumoma, Muskoka Dist. ♣	
Vandecar, U-10.....	40	Medina, T-8.....	50
Maple Lodge, T-7.....		Medonte, N-14.....	25
Mapleton, 3 m W Klingsville, Q-14..	30	Melanthon, P-12, (Ry 26-a) ×.....	80
Maple Vale, G-12.....	50	Melbourne, U-7, (Ry 4-b) †.....	150
Maplewood, T-9.....		Mel drum Bay, Algoma Co. ♣	
Mar, L-9.....	60	Melissa, J-17.....	
Marathon, L-27.....	50	Melrose, Q-23.....	100
Marble Rock, P-26.....	70	Melrose, 4 m N Komoka, U-7.....	150
March, K-27.....	60	Melville, Q-13, (Ry 8-b) †.....	100
Marchhurst, Carleton Co. ♣		Melville, R-22.....	100
Murchmont, N-15.....	100	Melville Cross, 3 m S Orangeville,	
Marden, S-11.....	25	Q-12.....	60
Mariposa, (Ry 18-e), 10 m N E Sonya,		Menie, P-21.....	150
P-17.....		Menomonee, 5 m S Baysville, L-17.....	
Markdale, O-11 (Ry 26-a) * + ×.....	800	Merivale, L-28.....	25
Markham, R-15 *.....	954	Merlin, X-4.....	75
Markham Station, R-15, (Ry 18-a) † §	25	Merrickville, N-28 *.....	819
Murksville, Algoma Co. ♣		Merritt, Grey Co. ♣	
Murlbank, P-23.....	200	Merritt Junction, U-15, (Ry 10-g,r)	
Marmion, N-9.....	25	* + †.....	1798
Marmor, Hastings Co. * ♣.....	500	Mersca, see Wheatley, Y-3.....	
Marmor Iron Works, P-21.....	25	Merton, T-13.....	25
Marnock, Q-8 *.....	25	Metcalf, see Osgood, M-29.....	350
Marsh Hill, P-16, (Ry 18-a) §.....	25	Metropolitan, 4 m N Granon, T-7.....	
Murshville, V-14.....	125	Metz, Q-11.....	25
Marshville Station, V-14, (Rys 4-a,		Meyersburg, Q-20.....	80
10-b) †.....	125	Michaels Bay, H-7.....	25
Marston, W-10.....	500	Michipicoten Island, Algoma Co. ♣	
Marsville, Q-12.....	200	Michipicoten River, E-31.....	
Martha, see Petrolea, U-5.....		Micksburg, J-24.....	25
Martintown, M-31.....	400	Middlemarch, Elgin Co. ♣	
Marvelville, 17 m from Osgoode, M-9.		Middlemiss, V-7.....	200
Marysville, Q-23.....	40	Middleport, V-12, (Ry 10-b) §.....	100
Masonville, V-8.....	25	Middleport, U-14.....	25
Massie, N-10.....	60	Middleton, P-14.....	100
Matawatchan, L-23.....		Middleville, M-26 *.....	150
Mather's, Q-19.....	25	Midhurst, O-14.....	300
Matilda, see Iroquis, N-29.....	1200	Midland, M-14, (Ry 18-c) * + §.....	1095
Matlock, T-5.....	50	Mid Lothian, Muskoka Dis. ♣	
Mattawa, F-19.....		Mildmay, P-9, (Ry 10-j) * + †.....	250
Muttawa, G-19, (Ry 5-a) * + §.....	50	Milford, R-23 *.....	400
Maxville, (Ry 2) § 14 m S E Cassel-		Millar's Corners, 2 m N Oxford Sta-	
man, L-31.....		tion, N-29.....	50
Maxwell, O-12 *.....	150	Millarton, 4 m S E Kincardine, O-7..	250
Mayburne, P-12.....	25	Millbank, R-9, (Ry 10-a) * + +.....	600
Mayerville, Russell Co. ♣		Mill Bridge, O-22.....	100
Mayfair, V-6.....	25	Mill Brook, Q-18, (Ry 18-c,d) * + §.....	1148
Mayfield, R-13.....	50	Millburn, P-26.....	50
Maynard, O-25.....	170	Mille Roches, N-31, (Ry 16-a) * + §..	400
Maynooth, L-21.....	250	Millgrove, T-12.....	180
McBurney's, (Ry 18-c) § 2 m S E		Mill Haven, Q-24.....	300
Perrytown, Q-18.....		Milliken, R-15.....	300
McCrimmon, 9 m N Alexandria, L-32	20	Millikens, York Co., (Ry 18-a) §	
McDonald's Corners, N-25.....	100	Mill Point, Q-23.....	
McGarry, Lanark Co. ♣		Milltown, Q-23.....	200
McGillivray, T-7.....	300	Milnesville, Q-15.....	50
McGillivray Station, T-7, (Ry 10-L) †	25	Milton, S-13, (Rys 8-a, 20-b) + † §.....	1302
McGregor, Essex Co. ♣.....	400	Milton West, (Ry 20-b) * § see Mil-	
		ton, S-13.....	

<i>Towns, etc.—continued.</i>	Pop. '81.	<i>Towns, etc.—continued.</i>	Pop. '81.
Milverton, R-9, (Ry 10-d) +	562	Mount Awish, Q-13	25
Mimico, S-14, (Ry 10-i) + ‡	100	Mount Brydges, U-7, (Ry 10-g) * + ‡	350
Mimosa, R-12	50	Mount Carmel, see Offa, S-7	100
Mindemoya, Algoma Co. *		Mount Charles, S-14	150
Minden, M-18 (Ry 18-e) * + §	300	Mount Chesney, Frontenac Co. *	
Mineslug, O-14, (Ry 20-f) ×	500	Mount Elgin, V-9 *	250
Mississippi, N-25, (Ry 14) + §	200	Mount Forest, P-10, (Rys 10-e, 26-b) * + §	2170
Mitchell, S-8, (Ry 10-b) * + ‡	2284	Mount Healy, U-12	75
Mitchell's Bay, W-3	100	Mount Hope, see Glenford, U-12	
Mitchells Square, O-15	25	Mount Horeb, P-18	120
Moffat, S-12	400	Mount Hurst, see Castlederg, Q-13	130
Mohawk, U-11 *	400	Mount Irwin, N-18	25
Mohrs Corner, K-27	100	Mount Pleasant, P-18	200
Mohr, P-22	200	Mount Pleasant, R-13	200
Moir Lake, Hastings Co., (Ry 18-g) §		Mount Pleasant, 2 m from Bradford, P-14	60
Molesworth, 3 m W Shipley, Q-9	100	Mount Pleasant, (Ry 10-p) + ‡ 4 m W Brautford, U-11	
Moltke, 4 m W Ayton, P-9		Mount Salem, V-8	60
Monck, Q-11		Mountsberg, S-12	50
Monckland, M-31	170	Mount Sherwood, L-29	25
Moncrieff, R-8	25	Mount St. Louis, N-14	300
Moneymore, P-23		Mount St. Patrick, L-24	540
Mongolla, 2 m S Milnesville, Q-15	22	Mount Vernon, U-11, (Ry 10-p) ‡	1500
Monkton, R-8	150	Mount Webster, 5 m N Lausdown, P-27	
Mono Centre, Q-12	70	Mount Wolf, Q-14	100
Mono Mills, Q-13 *	250	Mudge Hollow, see Canuing, T-10	120
Mono Road, R-13, (Ry 26-a) + ×	200	Muir, see London, U-8	
Mono Road Station, (Ry 26-a) + × see Mono Road, R-13		Muirkirk, (Ry 4-a) + ‡ 3 m S W Taylor, W-6	150
Monsell, 7 m E Bracebridge, L-16		Mulgrave, V-15	100
Montagne, N-27	100	Mull, 12 m E Chatham, W-4	40
Monteagle Valley, L-21		Mullifarry, 3 m N E Adelaide, U-6	
Mouticello, 8 m N W Luther, Q-11		Mulmur, P-13	50
Montrose, V-15	100	Muncey, 10 m E Longwood, V-6	100
Moore, U-3 *	350	Munn's Corners, S-13	25
Moorefield, Q-10, (Ry 10-j) + ‡	400	Munroe's Mills, M-32	
Moore's Falls, 9 m N W Kilmount, N-18		Munster, M-27	50
Moore's Lake, H-22, (Ry 5-a) §		Murdoch, 4 m N Holstein, P-16	
Mooresville, 5 m N Lucan, T-7	70	Murrillo, C-25, (Ry 5-e) ☉	
Moorewood, M-30		Murray, R-21	200
Moose Creek, M-31	50	Murvale, P-25, (Ry 14) §	200
Mora, O-16	25	Muskoka Falls, L-16	50
Moray, T-6	300	Muskoka Mills, Muskoka Dist. *	
Mordon's Creek, T-8, (Ry 10-f) §	25	Musselburgh, S-9	36
Morewood, M-30	250	Myre Hall, P-22	200
Morgan's, P-19	85	Myrtle, Q-16, (Ry 18-e) §	50
Morganstown, Q-20	90		
Morley, M-11	25		
Morningdale Mills, R-9	50		
Morpeth, X-5 *	700		
Morrisbank, Q-8	40		
Morrisburgh, N-30, (Ry 10-a) * + §	1719		
Morrison, S-12 *	400		
Mortlake, S-15	120		
Morton, P-26	140		
Morven, C-24	50		
Mosborough, (Ry 10-a) + § 5 m S W Guelph, S-12	25		
Moscow, P-24, (Ry 19)	60		
Moscow, 2 m E Drumbo, T-10	100		
Mosside, 10 m N W Bothwell, V-5			
Mossley, U-8	103		
Motherwell, S-8	100		
Moulinette, N-31	150		
Mouton Station, V-13, (Ry 10-h) + ‡	400		
Mountain Grove, O-24	500		
Mountain Mills, 5 m N E Picton, R-23	50		
Mountain View, Q-22	80		
Mount Albert, P-15, (Ry 18-b) * + §	600		
Mount Albion, V-13	100		
		Nairn, T-7 *	150
		Nanticoke, V-12 *	200
		Napanee, Q-23, (Rys 10-a, 19) * + §	3680
		Napanee Mills, Q-24, (Ry 19)	100
		Naphan, 10 m N W Kingsford, O-23	
		Napier, U-6 *	250
		Napperton, U-6	25
		Narrow Station, P-20, (Ry 7-b) §	25
		Nashville, York Co. *	
		Nassagaweya, S-12 *	20
		Nassau Mills, P-19, (Ry 18-d) §	25
		Navan, L-29	50
		Neebish, Algoma Co. *	80
		Negwaso, D-30	
		Nelle's Corners, V-12, (Ry 10-h) + ‡	
		Nelson, T-13, (Ry 20-b) §	100
		Nenagh, P-10	

<i>Towns, etc.—continued.</i>	Pop. '81.	<i>Towns, etc.—continued</i>	Pop. '81.
Netherby, V-15.....	100	North Augusta, O-28 *	400
Nenstadt, P-9, (Ry 10-d) * + +.....	650	North Branch, Russell Co. ♣	
Nevis, N-15.....	200	North Bruce, N-E.....	70
New Aberdeen, S-10.....	50	North Buxton, see Buxton Station, X-4.....	200
Newark, V-10.....	100	North Chatham, W-4.....	25
Newbliss, O-27.....	600	Northcote, Renfrew Co. ♣	
Newboro, O-26 *.....	418	North Douro, see Lakefield, P-19. . .	500
New Boyne, O-27.....		North Dublin, O-28.....	
Newbridge, Q-9.....	130	North Edinburgh, K-28.....	25
New Brinsawlek House, C-32.....		Northfield, M-31.....	40
Newburgh, Q-24, (Ry 19) *.....	834	Northfield, U-10.....	150
Newbury, V-6, (Ry 10-g) * + †.....	546	Northfield Centre, 5 m S W Fairlee, O-28.....	
New Carlow, Hastings Co. ♣		North Germany, S-11.....	25
Newcastle, R-18, (Ry 10-a) * + §.....	1000	North Glanford, V-12.....	175
Newcombe, I-14.....	500	North Gower, M-28 *.....	350
Newcomb's Mills, Q-20.....	300	North Hastings Junction, (Ry 18-f,g) § 5 m E Stirling, P-21.....	
New Credit, V-12.....	25	North Keppel, M-10.....	120
New Dublin, Leeds Co. ♣	150	North Lonsdale, Q-23.....	25
New Dundee, S-10 *.....	300	North Mountain, M-29.....	100
New Durham, V-10, (Ry 10-p) †.....	100	North Pelham, U-14.....	150
New Edinburgh, suburb of Ottawa, L-28 *.....	995	North Port, Q-23 *.....	200
New England, see Eden, V-9.....		North Ridge, X-2.....	100
New Germany, V-15 *.....	75	North Seguin, 21 m from Rosseau, K-15.....	100
New Glasgow, see Aldborough, W-6.....	50	North Seneca, V-12.....	200
New Hamburg, S-10, (Ry 10-a) * + §.....	1240	North Shannonville, Q-22, (Ry 10-a) + §.....	25
Newholm, Muskoka Dist. ♣		North Valley, 10 m from Wales, N-31.....	
New Hope, S-11.....	1000	North Walsingham, V-10.....	25
Newington, M-31.....	200	North Williamsburgh, N-30.....	300
New Lancaster, M-33.....	700	North Winchester, M-30.....	25
New Lowell, O-13, (Ry 20-a) + ×.....	500	Northwood, see Lewisville, W-4. . .	150
New Market, Q-15, (Ry 20-a) * + ×.....	2000	Norval, S-13, (Ry 10-a) * + §.....	400
Newport, U-11.....	100	Norway, S-15.....	200
New Ross, N-29.....	120	Norwich, (Ry 10-d,p) * + † see Nor- wich Crossing, U-10.....	1411
Newry, R-9.....	40	Norwich Crossing, U-10, (Ry 10-d,p) † +	
Newry Station, R-9, (Ry 10-k) †.....	320	Norwood, P-20 *.....	853
New Sarum, V-8, (Rys 4 a, 10-h) †.....	60	Nottfield, L-31, (Ry 2) §.....	160
Nenstadt, (Ry 10-d) + + see Nenstadt, P-9.....	650	Nottawa, N-12, (Ry 20-b) + §.....	200
Newton, Perth Co. ♣		Nottawasaga, see Duntroon, O-12.....	
Newton, see Clarke, R-18.....	350	Nugent, 12 m N W Thanet, N-21....	160
Newton Brook, R 15.....	200		
Newton Robinson, P-14.....	200		
Newtonville, R-18.....	100		
Newtonville Station, R-18, (Ry 10-a) + §.....	25		
Niagara, U-15, (Ry 4-c) * + †.....	1441		
Niagara Falls, Welland Co., (Rys 4-c, 10-g) * + †.....			
Niagara Junction, V-16, (Ry 4-a,c) †.....	25		
Nicksville, V-11, (Ry 10-h) †.....	23		
Nicolston, P-14.....	100		
Nile, Q-7.....	100		
Niles Corner, R-22.....	40		
Nilestown, U-8.....	200		
Nine Corners, T-41.....	25		
Nipissing, Nipissing Dist. ♣			
Nissouri, T-8.....	400		
Nithburg, S-9.....	100		
Nithvale, T-14.....	50		
Nixon, (Ry 10-h) + † 4 m W Simcoe, V-11.....	300		
Nobleton, Q-10 *.....	200		
Nordland, C-25, (Ry 5-e) * ☉			
Norham, Q-20.....	200		
Norland, N-17.....	150		
Normanby, see Orchard, P-10.....			
Normandale, W-11.....	100		
Normanton, see Port Elgin, O-26....	750		
North Adjala, 1 m S Rosemont, P-13.....	25		
		Oakhill, N-17.....	100
		Oakland, U-11 *.....	238
		Oak Ridges, 2 m S White Rose, Q-15.....	25
		Oakville, S-14, (Ry 10-i) * + †.....	1710
		Oakwood, P-17.....	500
		Oakwood Station, O-17, (Ry 18-c) + §.....	25
		Oates, Addington Co. ♣	
		Oban, T-14.....	175
		Ochil, 28 m from Lanark, M-26.....	
		Oconto, Addington Co. ♣	
		Odell, Middlesex Co. ♣	
		Odessa, Q-24 *.....	709
		Offa, S-17.....	100
		Ogemah, Lanark Co. ♣	
		Ohsweken, U-11.....	25
		Oil City, U-4, (Ry 4-b) + †.....	400
		Oil Springs, V-5 *.....	552
		Old Castle, Essex Co. ♣	
		Olden, (Ry 14) § 18 m S Mississippi, N-25.....	
		Oldfield, 5 m SE Wallaceburgh, V-3....	25

Towns, etc.—continued.	Pop. '81.
Old Fort, (Ry 18-c) § 4 m E Midland, M-14.	
Old Lancaster, see North Lancaster, M-33.	
Old Montrose, X-3.	25
Olinda, Y-2.	300
Ollphant, Bruce Co. ¶	
Ollver, Oxford Co. ¶	
Omagh, S-13.	25
Omemeo, P-18, (Ry 18-c, f) * + §	744
Ompah, M-24.	100
Onelda, U-12.	200
Ongley, Q-21.	60
Onondaga, U-12, (Ry 10-b) + ‡	300
Ontario, U-13.	200
Ops, (Ry 18-c) § 3 m S W Lindsay, P-17.	
Orange Hill, P-20.	25
Orangeville, Q-12, (Rys 8-b, 26-a, b) * + ×	2847
Orangeville Junction, Q-12, (Ry 26-a, b) ×	25
Orchard, P-10.	150
Oriel, 7 m S E Woodstock, T-9.	35
Orillia, N-15, (Rys 18-c, 20-c) * + § ×	2910
Orkney, 25 m from Dundas, T-12.	
Orleans, K-29.	80
Ormond, M-29.	40
Oro, N-15.	25
Oro Station, (Ry 20-c) × 5 m N E Gowan Station, O 14.	
Orono, R-17 *	1000
Orr Lake, Simcoe Co. ¶	
Orton, 4 m S Marsville, Q-12.	40
Orwell, V-8, (Ry 10-h) * ‡	220
Osaca, Q-18.	100
Osborne, U-4.	
Osceola, J-24 *	100
Osgoode, M-29.	50
Osgoode Station, M-29, (Ry 5-f) §	25
Oshawa, R-17 *	992
Oshawa Station, R-17, (Ry 10-a) + §	25
Osman, Middlesex Co. ¶	
Osnabruok Centre, N-30.	500
Oso Station, (Ry 14) § 51 m from Kingston, Q-25.	75
Osprey, see Maple Vale, O-12.	
Ospringe, R-12.	60
Ossian, U-4.	25
Ostrander, Oxford Co. ¶	
Ottawa, L 28, (Rys 2, 5-a, f) * + §	27412
Otter Creek, 4 m S Walkerton, P-9.	150
Otterville, U-10, (Ry 10-d) * + +	700
Oungah, W-4.	25
Onstic, R-12.	35
Outram, O-9.	150
Ouvry, 7 m S Charing Cross, X-4.	25
Overton, P-23.	60
Owen Sound, W-10, (Ry 26-a) * + ×	4426
Oxenden, M-10.	70
Oxford, see Oxley, Y-1.	150
Oxford, see Duart, W-6.	
Oxford Centre, V-10.	50
Oxford Mills, N-28.	400
Oxford Station, N-29, (Ry 5-f) + §	400
Oxley, Y-1.	150
Oxmead, 5 m S W Meaford, N-11.	

Towns, etc.—continued.	Pop. '8
Page's, Q-10, (Ry 26-b) ×	25
Palmswick, Q-14.	50
Palsley, O-8, (Ry 10-j) * + ‡	1154
Pakenham, L-26, (Ry 5-a) * + §	700
Palermo, T-13 *	150
Palgrave, Q-13, (Ry 20-b) + §	25
Palmer Rapids, K-22.	30
Palmerston, Q-10, (Ry 10-a, j, k) * + ‡ § +	1292
Palmyra, W-6.	25
Panmure, L-27.	450
Parham, O-24, (Ry 14) + §	50
Paris, T-11, (Ry 10-b, g) * + ‡ §	3173
Paris Station, 1 m W Paris, T-11.	350
Parkdale, (Rys 8-a, 10-a, 20-a, 26-a) * + × § 3 m N W Toronto, S-15.	1170
Parker, Q-11.	100
Parker's Mills, P-21.	25
Park Head, M-9, (Ry 10-d) +	150
Park Hill, T-6, (Ry 10-a) * + §	1539
Parma, R-23.	70
Parry Harbour, Meaford Dist. ¶	
Parry Sound, K-14 *	1300
Patterson, * 2 m S Richmond Hill, R-24	500
Patillo, W-2, (Ry 10-g) ‡	25
Pattons Siding, (Ry 10-g) ‡ 5 m N E Dorchester Station, U-8.	25
Pandash, M-20.	
Paynes, V-7, (Ry 10-h) ‡	25
Peabody, O-10.	300
Peacock, 5 m W Toronto, S-15.	25
Pearcey, 5 m N E Magnetawan, I-15.	150
Peebles, Oxford Co. ¶	
Peepaban, Q-11.	25
Pefferlaw, P-16.	150
Peppers Station, R-9, (Ry 10-d) +	
Pelee Island, Essex Co. ¶	
Pelham Union, U-14.	100
Pembroke, I-24, (Ry 5-a) * + §	2820
Pendleton, L-31.	100
Penetanguishene City, M-14, (Ry 20-f) * + ×	1200
Pentland, R-11.	30
Penville, Q-14.	120
Perch, T-4, (Ry 10-a) §	
Perch Station, (Ry 10-a) § see Perch, T-4.	30
Perivale, 16 m S E Pembroke.	4
Perkinsfield, Simcoe Co., (Ry 20-f) × ¶	
Pern, P-13.	500
Perretton, J-24.	250
Perrin, Victoria Co. ¶	
Perry, V-14, (Ry 4-a) + ‡	25
Perrytown, Q 18, (Ry 18-c) §	150
Perth, N-26, (Ry 5-d) * + §	2467
Perth Road, P-25.	25
Pern, S-13.	25
Petchville, Q-15.	80
Peterborough, P-19, (Ry 18-d, f) * + §	6812
Petersburgh, S-10, (Ry 10-a) + §	300
Petersburgh, see Humberstone, V-15.	1100
Peterson, M-18.	70
Peterson's Ferry, Q-23.	50
Peterson's Corners, 8 m from Minden, M-18.	100
Petersville, * 1 m from London, U-8.	1601
Petewawa, I-23.	50
Petewawa Station, I-23, (Ry 5-a) §	
Petherton, Q-10.	130

<i>Towns, etc.—continued.</i>	Pop. '81.
Petrolia, U-5, (Rys 4-c, 10-n) * + †	3465
Petrolia Junction, U-5, (Ry 4-b,c) †	
Pethworth, P-24.....	200
Phelpston, N-14, (Ry 20-f) * + †	70
Phillipsburg West, S-10.....	250
Phillipston, P-22.....	
Phillipsville, O-27.....	300
Pic, Algoma Co. •	
Pickering, R-16, (Ry 10-a) * + §	800
Picton, R-23, (Ry 6-a) * + §	2975
Pike Bay, Bruce Co. •	
Pike Creek, 10 m E Windsor, W-1..	150
Pike Falls, N-27, (Ry 5-d) §	125
Pinedale, P-16.....	25
Pine Grove, R-14.....	250
Pine Orchard, Q-15.....	25
Pine River, O-7.....	25
Pinkerton, O-8.....	
Pinkerton Station, O-9, (Ry 10-j) + †	200
Pitt's Ferry, Q-26.....	95
Pitston, N-29.....	50
Plainfield, Q-22.....	30
Plainville, 4 m W Cold Springs, Q-19.	100
Plantagenet, K-31 *.....	300
Plantagenet Springs, 3 m W Planta- genet, K-31.....	25
Plattsville, T-10.....	800
Playfair, N-26.....	60
Playfair Mills, see Playfair, N-26.	
Pleasant Hill, W-10.....	250
Pleasant Valley, see Hillier, R-22..	100
Plevna, 30 m N Parham, O-24.....	60
Plum Hollow, O-27.....	
Point Alexander, H-23.....	
Point Alexander Station, H-23, (Ry 5-a) §	
Pointe au Pins, Algoma Co. •	
Point Edward, T-4, (Ry 10-a) * + §	1293
Point Fortune, 3 m E Chate au Blon- deau, K-33.....	25
Point Kaye, L-15.....	40
Point Petre, S-23.....	40
Point Rich, M-11.....	25
Point Sheganiandah, G-8.....	25
Point Traverse, R-23.....	200
Poland, M-25.....	40
Pomora, O-11.....	150
Pond Mills, see Wilton Grove, U-8..	70
Ponsonby, K-11.....	50
Pontypool, Durham Co. •	
Poole, R-9.....	200
Poplar Hill, 6 m N W Komoka, U-7..	75
Portage Road, O-17, (Ry 18-a) + § ..	25
Port Albert, P-7.....	200
Port Albino, W-15.....	25
Port Arthur, D-26, (Ry 5-e) ☉	
Port Bolster, P-16.....	25
Port Britain, R-18.....	25
Port Bruce, V-8.....	400
Port Burwell, W-9 *.....	600
Port Carling, L-15.....	60
Port Cockburn, K-15.....	25
Port Colborne, V-15, (Rys 10-b, r, 29) * + †.....	1716
Port Credit, S-14, (Ry 10-i) + †.....	375
Port Dalhousie, U-15, (Ry 29) * + †	1129
Port Darlington, R-17.....	25
Port Dover, V-11, (Rys 10-d, 20-b) * + †.....	1146
Port Dover Junction, U-10, (Rys 4-a, 10-d) + +.....	25

<i>Towns, etc.—continued.</i>	Pop. '81.
Port Eglon, N-8, (Ry 10-j) * + †.....	1400
Port Elmsley, N-27.....	125
Porter's Hill, R-7.....	25
Port Frank, S-5.....	70
Port Franks, T-3.....	
Port Gibson, 1 m from Airlie, O-13..	100
Port Granby, R-18.....	200
Port Hoover, P-17.....	120
Port Hope, R-19, (Rys 10-a, 18-c) * + §	5585
Port Lambton, V-3.....	
Portland, O-26.....	2
Portland, V-10.....	2
Portlock Harbor, D-1.....	25
Port Maitland, V-13.....	50
Port Nelson, T-13.....	500
Port Perry, Q-16, (Ry 18-c) * + §	1800
Port Robison, V-15, (Rys 10-r, 29) * + †.....	700
Port Rowan, W-10.....	900
Port Royal, W-10.....	100
Port Ryerse, V-11 *.....	200
Port Sandfield, Simcoe Co. •	
Port Severn, M-15.....	300
Portsmouth, Q-25.....	1734
Port Stanley, V-8, (Ry 10-a) + †.....	674
Port Sydney, K-16 *.....	25
Port Talbot, V-7.....	90
Port Union, R-16, (Ry 10-a) + §	100
Port Whitby, R-16, (Rys 10-a, 18-c) + † §.....	100
Postville, S-13.....	100
Pottageville, 3 m W Schomberg, Q-14.	
Powassan, Muskoka Dist. •	
Powell, L-27.....	25
Prairie Siding, W-3, (Ry 10-g) †.....	25
Pratts, 3 m N E Newbery, V-6.....	25
Prescott, O-29, (Rys 5-f, 10-a) * + §	2999
Prescott Junction, O-29, (Rys 5-f, 10-a) + §	
Presque Isle, M-10.....	125
Preston, T-11, (Ry 10-j) * + †.....	1419
Price's Corner, N-15.....	25
Priceville, O-11 *.....	300
Priceville Station, O-11, (Ry 26-a) + §	25
Primrose, P-12.....	50
Prince Albert, Q-16, (Ry 18-c) + § ..	600
Princeton, T-10, (Ry 10-g) * + †.....	300
Pringer, R-23.....	
Prospect, M-27.....	100
Proton, O-11, (Ry 26-a) §.....	100
Providence Bay, H-7.....	25
Purbrook, 10 m S E Bracebridge, L-16.	
Purdy, K-22.....	
Puce, 5 m E Tecumseh Station, W-1.	
Purple Grove, 5 m N E Ripley, P-7.	
Purple Hill, Durham Co. •	
Purpleville, R-14.....	300
Puslinch, S-12, (Ry 8 a) * + †.....	150
Putnam, V-9, (Ry 8) †.....	110
Putnamville, see Putnam, U-9.	
Quays, R-19, (Ry 18-c) †.....	25
Queen Hill, 7 m W Paisley, O-8.	
Queensborough, O-22.....	130
Queenston, U-15, (Ry 4-c) + †.....	400
Queen Street Junction, (Ry 10-a) § 2 m N W Toronto, S-15.	

<i>Towns, etc.—continued.</i>	Pop. '81.	<i>Towns, etc.—continued.</i>	Pop. '81.
Queensville, P-15.....	180	Riverbank, 10 m E Moorefield, Q-10.	
Queen's Wharf, S-15, (Ry 10-a) § . . .	25	Riverdale Junction, (Rys 8-b, 20-b) § 3 m N W Cheltenham, R-13.	
Quinte, Q-22	25	Riversdale, P-8 *	300
		Riverside, York Co. *	
Raglan, Q-16.	100	Riverstown, Q-16	100
Railton, P-25.	700	Riverview, 8 m W Shelburne, P-12..	150
Rainham, V-13.	72	Riviere Raisin, M-32.	
Raluham Centre, V-12.	100	Roach's Point, P-15.	150
Rama, 1 m W Longford Mills, N-16.	500	Robertsville, (Ry 14) § 12 m S Missis- sippi, N-25.	200
Ramsey's Corners, L-29, (Ry 2) ‡ . . .	30	Roblin, P-23.	200
Randwick, P-13.	200	Roblins Mills, see Ameliasburgh, R-22.	300
Ranelagh, U-10	80	Rob Roy, O-12.	25
Rankin, J-24.	100	Rochester, 2 m E Belle River, W-2..	300
Raper, 6 m S E Delaware, U-7.		Rochesterville, L-28.	25
Rathburn, N-16.	25	Rockcliffe, G-22, (Ry 5-a) † §	25
Ratho, T-10 *	200	Rockford, N-10, (Ry 26-a) ×	25
Ravenna, N-12.	100	Rockford, V-11.	100
Ravenscliff, K-16.	25	Rockingham, K-22 *	100
Ravenshoe, P-15, (Ry 18-b) §	50	Rockland, K-30	130
Ravenswood, T-5.	50	Rocklyn, N-11.	100
Ravensworth, 20 m N Huntsville.		Rockport, Q-27.	200
Raymond, K-16.	100	Rocksidge, R-13.	60
Reaborg, P-17, (Ry 18-c) §	25	Rock Spring, O-27.	260
Read, Q-23.	65	Rockton, T-12 *	100
Reading, Q-12.	25	Rockvillage, L-29.	25
Rey, Muskoka Dist. *		Rockwood, S-12, (Ry 10-a) * † §	440
Rebecca, 4 m W Evelyn, U-8.		Rodgersville, S-7 *	70
Red Bay, 3 m N Southampton, N-8..	100	Rodney, W-6, (Ry 4-a) * † †	330
Rednersville, Q-22.	250	Roebuck, O-28	100
Red Rees, Algoma Co. *	200	Rokeyby, N-25	30
Red Wing, 8 m N Thornbury, N-12.		Rolph, see Rouson, V-10.	25
Reekie's Corners, see Arnow, O-8.		Romilly, Q-13.	25
Regan, N-15, (Ry 18-c) §	25	Romney, X-3.	25
Reid's Mills, Dundas Co. *		Romulus, T-12.	25
Relessey, P-13.	100	Ronaldsay, 5 m W Ventry, P-11.	150
Remington, 31 m from Belleville, Q-22	170	Rondeau, X-5	1600
Renforth, V-12.	100	Rondeau Harbor, X-5.	150
Renfrew, K-25, (Ry 5-a) * † §	1605	Ronson, V-10.	25
Renton, V-11.	50	Rosa, Q-21.	100
Renton Station, Wentworth Co., (Ry 20-b) ‡ *		Rosebank, T-11.	40
Renton Station, V-11, (Ry 19-h) † † . . .	25	Rosedale, O-17.	150
Restoule, Muskoka Co. *		Rosedene, U-14	100
Retties, (Ry 18-c) § 9 m South Kin- mount, N-18.	60	Rose Hall, R-22.	25
Reynoldsville, U-15.	60	Rosemont, P-13 *	200
Riceville, L-31 *	200	Roseneath, Q-20.	200
Richard's Landing, 15 m from Bruce Mines, D-2.		Rosetta, M-26.	20
Richmond * 20 m from Ottawa, L-28.	439	Roseville, see Montague, N-27.	100
Richmond, see Bayham, V-9.	350	Rose lle, T-11.	150
Richmond Hill, R-15 *	297	Roslin, P-22.	50
Richmond Hill Station, R-14, (Ry 20-a) † ×	25	Ross, J-25.	70
Richmond West, M-28.	487	Rosseau, K-15 *	100
Richview, S-14.	100	Rosseau Falls, 3 m S Rosseau, K-15.	
Richwood, T-10, (Ry 10-b) ‡	50	Ross More, Prince Edwards Co. *	
Rideau Station, Q-25, (Ry 10-a) † § . . .	100	Ross Mount, 6 m N Port Hope, R-19.	150
Ridgetown, W-5 *	1538	Rostock, 7 m N Sebringville, S-8.	300
Ridgetown Station, W-5, (Ry 4-a) † † . .	25	Rothas, Ontario Co. *	
Ridgeville, V-14	100	Rothsny, Q-10.	200
Ridgeway, W-15 *	600	Ronge Hill, R-16.	100
Rimington, 8 m from Maydoc, O-22.	180	Round Lake, O-20.	
Ringwood, Q-15.	150	Round Plains, U-11.	150
Ripley, P-7, (Ry 10-k) † †		Routhier, Prescott Co. *	
		Rowan Mills, W-10.	80
		Rowena, Dundas Co. *	
		Roxborough West, M-31.	25
		Roxborough Gravel Pit, (Ry 2) § 8 m S E Casselman, L-31.	
		Rugby, W-15 *	75

<i>Towns, etc.—continued.</i>	Pop. '81.	<i>Towns, etc.—continued.</i>	Pop. '81.
Ruscom River, X-2, (Ry 4-a) †		Scotia, Muskoka Dist. ♣	
Rush Point, Peterborough Co. ♣		Scotland, U-11 *	100
Russeldale, S-8.		Sengoz, Q-17.....	200
Russell, M-30 *	150	Seaforth, R-8, (Ry 10-b) * + §	2180
Russell's, K-25, (Ry 5-a) §	25	Seagrave, P-17, (Ry 18-e) + §	100
Russellton, Simcoe Co. ♣		Seaton, S-15.....	25
Rutherford, V-4.....	100	Sebright, N-16.....	25
Ruthven, Y-2.....	150	Sebringville, S-8, (Ry 10-b) + †	325
Rutledgeville, 17 m N W Belleville, Q-22.....	80	Seckerton, Lambton Co. ♣	
Ryans Corners, see Elginfield, T-7.		Seddon, V-7, (Ry 4-a) †.	25
Ryckman's Corners, T-12.....	150	Seely, K-17.....	16
Rydal Bank, Algoma Co. ♣		Seely's Bay, P-26.....	300
Rye, Muskoka Dist ♣		Segens Falls, J-15.....	100
Ryegate, W-1.....	300	Selby, Q-23.....	200
Rylstone, P-21.....	120	Selee's Corner, O-28.....	25
Rymal, V-13, (Ry 20-b) §	25	Selkirk, V-12 *	300
		Selton, W-5.....	50
		Selwyn, O-19.....	100
		Seneca, V-12.....	2000
		Seymour Bridge, M-16, (Ry 20-c) * + ×	50
		Seville, 4 m E Aylmer, V-8.	
		Shakespeare, S-9, (Ry 10-a) * + § ...	350
		Shamrock, K-24.....	50
		Sham Station, S-11.....	50
		Shanick, O-21.....	150
		Shanly, N-29.....	70
		Shannon Hall, Muskoka Dist. ♣	
Sable, T-6.....	100	Shannonville, Q-22, (Ry 10-a) * + §.....	700
Sable River, Bruce Co. ♣		Shanty Bay, 5 m N E Barrie, O-14.....	100
Sabourin's Siding, (Ry 25) § 4 m S O-goode Station, M-29.		Sharlott Lake, (Ry 14) * + § 40 m N Klmgton, Q-25.....	300
Sacville, see Colchester, Y-1.....	200	Sharon, Q-15 *.....	400
Sadowa, 2 m N W Dartmore, N-16..	100	Shurpton, Q-25.....	100
Saintfield, P-16.....	180	Shedden, N-17, (Ry 18-a) §	300
Salem, R-11.....	600	Sheffield, T-11.....	150
Salem, see Thuriow, P-23.....	25	Shegulndah, G-8.	
Salford, V-9.....	100	Shelburne, P-12, (Ry 26-a) * + ×.....	491
Salmon Point, S 22.....	25	Sheldon, P-13.....	45
Salmonville, R-13, (Ry 20-b) + §	150	Sheppardtown, 3 m S Port Albert, P-7.	50
Saltford, Huron Co. ♣		Sheridan, S-14.....	100
Sandfield, Algonia Co. ♣		Sherkston, V-15, (Ry 10-b) †	100
Sandfield, 27 m from Riviere Raisin, M-22.....	100	Sherwood, York Co. ♣	
Sandford, Q-16.....	150	Sherwood Springs, P-28.....	25
Sandhill, R-13.....	100	Shetland, V-5.....	50
Sandhill, S-14.....	200	Shiloh, R-12.....	25
Sandhurst, Q-24.....	300	Shloka, Huron Co. ♣	
Sand Point, K-26, (Ry 5-a) + §	200	ShIPLEY, Q-9.....	100
Sandwich, W-1 *	1143	Shirley, Q-17.....	
Sangster, Addington Co. ♣		Shrigley, P-12.....	300
Sarawack, see Presque Isle, M-10.....	125	Siddalsville, 2 m S E Brecon, T-7.....	50
Sarapta, S-7.....	50	Sidney Crossing, Q-22, (Ry 10-a) + §	25
Sarginson, 7 m N E Campbellford, P-20.		Sierra, M-32.....	100
Sarnia, T-4, (Ry 10-a,m) * + † §	3874	Siftons, 4 m S W London, U-8.....	25
Sarsfield, L-30.....	25	Sigsworth, (Ry 14) § 4 m S Verona, P-24.	
Satterthwaite, N-15, (Ry 18-c) §	25	Sillsville, Q-24.....	60
Sauble Falls, Bruce Co. ♣		Silom, Q-16.....	25
Saugeen, N-9 *.....	2579	Silver Creek, see Silver Green, R-12.	90
Sault Ste. Marie, Algoma Co. ♣		Silver Creek, (Ry 18-c) § 4 m N W Orilla, N-15.	
Saurin, (Ry 20-r) × 2 m N Elmvale, N-14.		Silver Green, R-12.....	90
Savanne, B-25, (Ry 5-c) ☉		Silver Hill, V-10.....	50
Saxony, R-17, (Ry 10-a) §	25	Silver Islet, Algoma Co. ♣ *	
Scanlon's, P-14, (Ry 20-a) ×	55	Silver Lake, N-18.....	30
Scarborough, R-15, (Ry 10-a) * §	109	Simcoe, V-11, (Ry 10-a,b) * + † +	2645
Scarborough Junction, R-15, (Rys 10-a 18-a) + §	25	Simclairville, U-13.....	50
Scarlet Hill, Simcoe Co. ♣		Singleton's Corners, O-26.....	25
Scisaw, (Ry 8-a) † 12 m N E Galt, T-11.		Singhampton, O-12 *.....	150
Schepeler, N-16, (Ry 18-c) §	25	Sistersville, see Arlington, P-13.	
Schomberg, Q-14 *	300	Skeads Mills, L 28, (Ry 5-a) + §.....	25
Scone, O-9.....	107	Skipness, M-9.....	50
Scotch Block, S-13.....	150	Skye, L-31.....	200
Scotch Mills, see Kerry, L-31.....	80		

<i>Towns, etc.—continued.</i>	Pop. '81.	<i>Towns, etc.—continued.</i>	Pop. '81
Sleswick, Q-13	50	Springvale, U-11	150
Sligo, R-13	70	Spring Valley, Leeds Co. *	70
Smilleville, M-29	25	Springville, P-18	150
Smith, P-19	25	Spry, Bruce Co. *	150
Smithfield, Q-21, (Ry 10-a) † §	250	St. Abners, U-11	25
Smithfield, R-14	25	St. Agatha, S-10	200
Smith's Falls, N-27, (Ry 5-b, d) * † §	2087	St. Albans, Q-21	25
Smith's Hill, see Carlow, Q-7	200	St. Albert, Russell Co. *	25
Smithurst, 3 m E Clifford, P-9	80	St. Andrews, M-31	800
Smithville, U-14	600	St. Anne, T-18	80
Smithville, 3 m S Halloway, Q-22	25	St. Ann's, (Ry 20-b) § 2 m S Zimmerman, S-13	200
Snake River, (Ry 5-a) § 4 m N W Cobden.	25	St. Ann's, U-14	200
Snedden's, L-27, (Ry 5-a) §	25	St. Augustine, 5 m N E Dunganon, P-7	25
Solina, R-17	100	St. Catherine's, U-15, (Rys 10-g, 20) * † §	9631
Solmesville, 1 m E Northport, Q-23	25	St. Catherine's West, see St. Catherine's, U-15	25
Solway, 6 m N E Walkerton, P-9	25	St. Clair Junction, V-7, (Ry 4-a-b) †	25
Sombra, U-3 *	600	St. Clair Siding, (Ry 10-g) † 3 m W Stony Point, X-3	25
Sonya, P-17, (Ry 18-e) §	50	St. Clements, S-10	250
Sopherton, O-27	25	St. David's, U-15	250
Southampton, N-8, (Ry 10-j) † ‡	1141	St. David's Station, U-15, (Ry 10-g) † ‡	25
South Bay, S-23	25	St. Elmo, Glengarry Co. *	25
South Bay, R-23	25	St. Eugene, L-33	400
South Branch, N-32	25	St. George, T-11, (Ry 10-g) * † ‡	800
South Cayuga, V-13	50	St. George's Station, T-11, (Ry 10-g) †	25
South Deniston, P-24, (Ry 14) §	50	St. Helens, P-7	250
South Douro, P-19	100	St. Isidore de Prescott, Prescott Co. *	25
South Dummer, P-20	25	St. Ives, T-8	150
South Elmsley, 7 m from Perth, N-26	150	St. Jacobs, S-10 *	500
Southend, 2 m N Drummondville, V-15	100	St. James' Park, 1 m W London, U-8	6000
South Finch, M-30	100	St. Joachims River Ruscom, Essex Co. *	25
South Gloucester, L-29	60	St. John's, see Arva, U-7	200
South Gower, N-29	100	St. John West, U-15	150
South Hastings, O-23, (Ry 6-b) §	25	St. Joseph, D-1	25
South Indiana, (Ry 2) § 11 m S E Eastman's Springs, L-29	25	St. Lawrence, 17 m S E Kingston, Q-25	25
South La Grasse, L-33	50	St. Marys, T-8, (Ry 10-a, f) * † §	3415
South Lake, P-26	100	St. Mary Village, G-31	25
South Lancaster, 1 m S Lancaster, M-32	400	St. Ola, N-22	225
South Lonsdale, Q-23	25	St. Patricks, M-13	25
South March, L-28	100	St. Pauls, S-8, (Ry 10-a) † §	50
South Middleton, V-10	60	St. Pauls Station, (Ry 10-a) § see St. Pauls, S-8	50
South Monaghan, Q-18	100	St. Raphael West, M-32	25
South Mountain, N-29	250	St. Thomas, V-8, (Rys 4-a, b, 8-a, 10-a, b) † ‡	8367
South River, Muskoka Dist. *	25	St. Thomas West, * see St. Thomas, V-8	8367
South Westmeath, J-25	200	St. Vincent, N-11, (Ry 26-a) ×	2200
Southwold, V-7, (Ry 4-b) †	25	St. Vincent Road, (Ry 26-a) × 4 m S Owen Sound, N-10	25
South Woodstee, 2 m S Woodslee, X-2	500	St. Williams, W-10 *	350
South Zorra, T-9	150	Staffa, S-8	100
Spaffordton, P-25	150	Stafford, J-24	100
Spanish River, E-7	100	Staffordville, Q-22	30
Sparrow Lake, Muskoka Dist. *	25	Stamford, U-15, (Ry 10-g) †	300
Sparta, V-8 *	500	Stanleydale, 5 m E Ravenscliffe, K-16	200
Speedie, 2 m from Leith, M-10	100	Stanley's Mills, R-14	200
Speedvide, R-12	30	Stanleyville, 9 m S Perth, N-26	25
Spence, J-15	100	Stanton, P-13	200
Spencerville, N-29, (Ry 5-f) * † §	40	Starkes' Corners, see Burgoyne, N-9	100
Speyside, S-13	200	Starkville, Durham Co. *	25
Spires, Wellington Co. *	25	Star Lake, Muskoka Dist. *	25
Spring Arbor, W-10	100	Starrat, Muskoka Dist. *	25
Springbank, T-6	150	Station, M-9, (Ry 10-a) †	25
Spring Brook, P-21	50	Stayner, O-13, (Ry 20-a) * † ×	1028
Springfield, V-8, (Ry 4-a) * † ‡	555	Steele, O-14	25
Springfield, (Ry 8-a) 3 m S W Cooksville, S-14	160	Stella, Q-24 *	200
Springford, U-10, (Ry 10-b) * † ‡	300	Sterling Falls, Muskoka Dist. *	25
Spring Hill, Q-14	250		
Spring Mills, see Camborne, Q-19	50		
Springtown, see Bagot, L-25	40		

<i>Towns, etc.—continued.</i>	Pop. '81.	<i>Towns, etc.—continued.</i>	Pop. '8
Stevensville, V-15, (Ry 4-a) * † §	300	Sweet's Corners, P-26	60
Stewart Bay, Muskoka Dist. *	45	Switzerville, Q-24	250
Stewartstown, S-13, (Ry 20-b) §	250	Sydenham, Addington Co. * *	
Stewartville, K-26	150	Sydenham, T-12, (Ry 10-g) † ‡	300
Stinson's Creek, (Ry 6-a) † ‡ 4 m S W Bloemfield, R-22		Sydenham Mills, M-11	30
Strling, P-21, (Ry 18-f) * † §	874	Sydney Crossing, Q-22, (Ry 10-a) §	
Strlton, K-10 *	150	Sykeston, 9 m E Corinna, U-4	
Strsted, W-10	80	Sylvan, T-6 *	60
Stitts Corners, see Stittsville, L-23	200		
Stittsville, L-23, (Ry 5-a) † §	200	Talbotville, V-7	150
Stockdale, Q-21	400	Tanworth, F-24, (Ry 19) *	500
Stockwell West, P-27	25	Tapleystown, U-13	50
Stoco, P-23	100	Tara, N-9, (Ry 10-d) * † ‡	561
Stokes' Bay, 30 m N Warton, M-9		Tarbert, Q-11	50
Stonebridge, see Humberstone, V-15		Tatlock, M-25	100
Stoneleigh, L-17	25	Taunton, R-17	25
Stone Mills, 5 m N E Pleton, R-21		Tavistock, S-9, (Ry 10-b, d) * † ‡	900
Stoneton, Lincoln Co. *		Taylor, W-6, (Ry 4-a) †	25
Stony Creek, U-13 *	200	Tay Port, N-14	100
Stony Creek Station, T-13, (Ry 10-g) †	25	Tayside, L-31	25
Stony Lake, O-20		Tecumseh, see Tecumseh Station, W-1	
Stony Point, X-3, (Ry 10-g) † ‡	200	Tecumseh Station, W-1, (Ry 10-g) †	200
Story's, N-27, (Ry 5-b) §	100	Teeswater, P-8, (Ry 26-b) * † §	861
Stouffville, Q-15, (Ry 18-a, b) * † §	866	Teeville, U-11 *	1500
Stowe, 4 m from Monkton, R-8	100	Tekummah, H-7	25
Strabane, T-12 *	400	Telfer, U-7	150
Straffordville, V-9 *	400	Telverton, P-18	25
Strathallan, T-9	150	Temperanceville, Q-15	50
Strathbarn, V-6	150	Tempo, U-7	150
Strange, York Co. *		Tenby Bay, Algoma Co. *	
Strangheld, Kent Co. *		Tennyson, M-27	25
Stratford, S-9, (Ry 10-a, b, d) * † ‡ §	8239	Teskeyville, M-27	25
Strathayon, 9 m N E Chatsworth, N-10	32	Teton, R-11	100
Strathairn, N-11	25	Teviotdale, Q-10	200
Strathglass, M-31	25	Thamesford, U-8 *	350
Strathroy, U-6, (Ry 10-m) * † ‡	3817	Thames River, (Ry 10) 2 m W Lawrence, V-7	
Strausberg, S-10	50	Thamesville, W-5, (Ry 10-g) * † ‡	710
Streetsville, S-13, (Ry 8-a) * † §	755	Thanet, N-21	100
Streetsville Junction, S-12, (Ry 8-a, b) †		The Brook, Russell Co. *	
Stromness, V-13	100	*Thedford, (Ry 10-a) * † § 9 m N E Forest, T-5	685
Stroud, O-11	250	The Grange, Simcoe Co. *	
Sturgeon Bay, (Ry 18-c) † § 8 m E Midland, M-14	200	The Grove, 5 m S Thorndale, T-8	
Sturgeon Falls, Nipissing Dist. *		The Humber, 2 m N E Mimico, S-14	
Sturgeon Point, Victoria Co. *		The Ridge, 6 m W Thanet, N-21	100
Suckertown, see Silver Hill, V-10		Thessalon, D-2	250
Sudbury, D-11, (Ry 5-a) §		Thirty Mile Creek, U-14	20
Sullivan, N-10	170	Thistleton, R-14	200
Summerstown, N-32	75	Thomasburg, P-22	100
Summerstown Station, M-32, (Ry 10-a) † §	25	Thomasville, Q-14	80
Summerville, S-14	250	Thompsonville, P-13, (Ry 20-b) † §	350
Summit, Q-18, (Ry 18-c) §	25	Thornbury, N-12, (Ry 20-a) † ×	900
Sunmit, Q-19, (Ry 7-a) §	25	Thorncliffe, Kent Co. *	
Sunbury, Q-25	80	Thorndale, T-8, (Ry 10-f) † §	250
Sunderland, P-16, (Ry 18-a) * † §	400	Thornhill, R-15 *	600
Sundridge, Muskoka Dist. *		Thornhill Station, R-14, (Ry 20-a) † ×	25
Sunnidale, O-13	100	Thornton, P-14, (Ry 20-a) † §	300
Sunnidale Corners, Simcoe Co. *		Thornylurst, V-4	
Sunnidale Station, O-13, (Ry 20-b) §	25	Thorold, U-15, (Rys 10-i, 20) * † ‡	2456
Sunuside, S-14, (Ry 10-a) §	25	Thorpeville, R-11	25
Sunshine, Huron Co. *		Thunder Bay, C-26 *	1500
Super's, S-11, (Ry 10-j) §	25	Thurlow, P-23	120
Suspension Bridge, (Ry 4-c) † 5 m N Chippewa, V-15		Thwaite, Hastings Co. *	
Sutherland's Corners, V-5	50	Tichborne, O-25	25
Sutton, P-15, (Ry 18-b) † §	500	Tilbury, X-3, (Ry 4-a) † ‡	25
Sweaburg, U-9	200		

Towns, etc.—continued.	Pop. '81.
Tilbury East, X-3.....	150
Tilley, Leeds Co. •	
Tilsonburg, V-9, (Ry 10 <i>b, p</i>) * + †	66
Tilsonburg Station, V-9, (Rys 1 <i>a, l</i>) †	25
Tilsonburg Station, V-9, (Ry 10 <i>b, p</i>) †	
Tilton, P-20.....	25
Tinlin Corners, Q-11.....	150
Timmark, C-26, (Ry 5 <i>e</i>)	
Tintern, U-14.....	50
Tloga, P-13, (Ry 20 <i>b</i>) §	110
Tiverton, O-E *.....	515
Tobermory, Bruce Co. •	
Todmerdon West, see Doncaster, S-15.....	500
Toledo, O-27.....	300
Tollen Vale, 1 m from Allendale, P-19.....	100
Topping, 2 m S Musselburgh, S-9.....	280
Tormore, R-14.....	100
Toronto, S-15, (Rys 8 <i>a</i> , 10 <i>a, i</i> , 13 <i>a</i> , 20 <i>a</i> , 26 <i>a</i>) * + † §	80415
Toronto Junction, T-12, (Ry 10 <i>g, i</i>) †	25
Torrence, L-15.....	25
Tottenham, Q-11, (Ry 20 <i>b</i>) * + §	100
Townsend Centre, 2 m W Villa Nova, V-11.....	100
Townsend Station, V-11, (Ry 1 <i>a</i>) †	25
Toy's Hill, Dundas Co. •	
Trafalgar, S-13.....	100
Trafalgar Station, Halton Co. (Ry 8 <i>a</i>) §	
Traford, Addington Co. •	
Trabee, 7 m from Listowell, Q-9.....	25
Tramore, J-23.....	25
Travertown, O-10.....	50
Treadwell, K-31.....	200
Treecastle, Q-10.....	90
Trent Bridge, P-20, (Ry 7 <i>b</i>) §	100
Trenton, Q-21, (Ry 6 <i>a</i>) * + §	3042
Trenton Station, Q-21, (Rys 6 <i>a, b</i> , 10 <i>a</i>) §	25
Trout Lake, K-14.....	25
Trowbridge, Q-9.....	200
Troy, T-12.....	100
Troy, 3 m W Monpeth, X-5.....	150
Trudell, X-3.....	150
Tuam, Q-14.....	180
Tullamore, R-13 *.....	250
Turin, 5 m from Highgate, W-5.....	
Turkeyville, M-27.....	
Turner's Station, N-8, (Ry 10 <i>j</i>) †	25
Turtle Lake, K-15.....	25
Tuscarora, U-12.....	150
Tweed, P-22 *.....	650
Tweedside, U-13.....	150
Tyendinaga, Q-23, (Ry 10 <i>a</i>) + §	100
Tyneside, U-13.....	25
Tyneside, U-13.....	25
Tyrconnell, W-7.....	277
Tyron, Q-17.....	800
Tyrell, V-11.....	80
Udora, P-16.....	200
Uffington, M-16.....	70
Ufford, L-16.....	250
Uthloff, N-15, (Ry 18 <i>c</i>) + §	25
Ullin, E-4.....	25
Uiswater, K-15.....	100
Ulliyatt, O-11.....	25
Ulster, P-7.....	75

Towns, etc.—continued.	Pop. '81.
Untraville, M-21.....	25
Underwood, N-8 *.....	120
Union, V-8 *.....	200
Union Hill, T-8.....	25
Unlonville, R-15, (Ry 18 <i>a</i>) * + §	250
Uphill, N-17.....	100
Uplands, 41 m N Huntsville, K-17.....	
Upper, 3 m E Bingham Road, V-13.....	
Upper Fonthill, 1 m from Fonthill, V-15.....	75
Upper Hornby, Halton Co. •	25
Upsala, R-25, (Ry 5 <i>e</i>)	
Upter Grove, N-16, (Ry 18 <i>c</i>) † + §	185
Ursa, Peterborough Co. •	
Utica, Q-16.....	100
Utoka, 1 m W Rockwood, S-12.....	50
Utoga, O-11, (Ry 20 <i>a</i>)	50
Utterton, K-16.....	350
Uttoveter, T-5.....	100
Uxbridge, Q-16, (Ry 18 <i>a</i>) * + §	1824
Vachell, P-15.....	175
Valentia, P-17.....	50
Valetta, X-3.....	75
Valentyne, P-16.....	100
Vanatter, Q-12.....	25
Vanbrugh, K-23 *.....	50
Vanburg, Q-22.....	25
Van Camp Mills, Dundas Co. •	
Vandear, V-10.....	100
Vandeleur, O-11.....	100
Vanessa, 12 m N W Simcoe, V-11.....	500
Van Kleek Hill, K-32 *.....	500
Vankoughnet, 18 m from Gravenhurst, M-16.....	
Vaunceek, U-7.....	100
Vanvleck, N-13.....	175
Vareney, 3 m from Jarvis, V-12.....	
Varno, R-7.....	200
Varney, P-10, (Ry 10 <i>c</i>) +.....	50
Vasey, N-14.....	50
Veighton, L-29, (Ry 2) §	200
Vellore, R-14.....	200
Vennachar, M-23.....	60
Ventnor, N-29.....	150
Ventry, P-11.....	25
Verdun, P-7.....	25
Vereker, X-1.....	25
Vernon, M-20.....	30
Vernonville, Q-20.....	240
Verona, P-24, (Ry 14) † + §	400
Verschoyle, U-9.....	25
Vesta, O-9.....	35
Verve River, Algoma Co. •	
Victoria, R-13.....	50
Victoria, V-16, (Ry 4 <i>a, c</i>) + †	150
Victoria, (Ry 20 <i>a</i>) § 6 m S W Allandale, O-11.....	
Victoriaburgh, S-10.....	25
Victoria Corners, P-16.....	80
Victoria Harbor, M-14, (Ry 18 <i>c</i>) * + §	600
Victoria Road, O-17, (Ry 18 <i>a</i>) + §	200
Victoria Square, Q-15.....	200
Vienna, W-9 *.....	228
Vigo, O-13.....	200
Village of St. Mary, G-31.....	

<i>Towns, etc.—continued.</i>	Pop. '81.	<i>Towns, etc.—continued.</i>	Pop. '81.
Villa Nova, V-11, (Ry 4-a) † ;	100	Watson's Corner, M-26,	100
Villers, P-19.	75	Wattenwyl, Muskoka Dist. •	
Vine, O-14	175	Wauhamik, J-11	200
Violet, Q-24	200	Wauhaushene, M-14, (Ry 18-c) * † §	50
Violet Hill, 8 m from Shelburne P-12.		Waubano, U-4	25
Virgil, U-15	50	Waubano, 6 m E London, U-8,	
Virglna, P-15.	25	Waupoos, R-23	25
Vittoria, V-11 *	700	Waverly, N-11.	200
Vivian, Q-15, (Ry 18-b) §	50	Waverly, see Traverstown, O-10	50
Vosburg, 4 m S W Lewisville, W-1	25	Weir, 8 m from Brantford, U-11,	
Vroomanton, P-16.	250	Weissenburgh, Waterloo Co. •	
Vyner, T-4	75	Welch's Station, S-27	25
Waba Nurseries, (Ry 5-a) § 3 m S E		Welcome, R-18.	100
Arnprior, K-26.		Weldon, 15 m S E Chatham, W-4	150
Waddles Mill, H-34.		Welland, V-15, (Rys 4-a, 10-r, 29) * † §	1870
Wagram, Q-10	25	Welland Canal, V-15	25
Wainfleet Centre, V-14, (Ry 10-b) †	25	Welland Junction, V-15, (Ry 10-h, r) ;	25
Walbridge, Q-22.	175	Welland Port, V-11 *	275
Waldemar, Q-12, (Ry 26-b) † §	150	Welland Port, (Ry 1-a) † ; 12 m S W	
Wales, N-31, (Ry 10-a) * † †	120	Welland, V-15.	
Walker's, (Ry 4-b) † ; 6 m W Ekirid, V-6.		Wellesley, S-10 *	700
Walker's Point, L-15.		Wellington, M-28.	598
Walkerton, P-9, (Ry 10-j) * † †	2601	Wellington, R-22, (Ry 6-a) * † §	800
Walkerville, W-1, (Ry 10-g) * † †	600	Wellington Square, T-13, (Rys 10-a) §	1068
Wallace, Q-10	50	Wellman's Corners, P-21.	100
Wallaceburgh, V-3 *	1325	Welsh's, N-27, (Ry 5-b) §	
Wallace Mine, F-8	25	Wendigo, * see Melbourne, U-7.	25
Wallacetown, W-7 *	500	Wendover, K-30.	90
Wallenstein, R-10.	40	Wesleyville, R-18	200
Waller, Russell Co. •		West Arran, N-9	30
Walmer, Q-11	150	Westbrook, Q-25	200
Walmer, T-9	25	Westervelt Corners, R-13.	80
Walnut, 4 m S Wattord, U-5.	25	West Essa, P-13	40
Walpole Island, V-3.	25	Westfield, Q-7.	25
Walsh, V-11	100	West Flamboro, T-12 *	250
Walsingham Centre, see Pleasant		West Gravenhurst, 1 m from Graven-	
Hill, W-10.	250	hurst, M-16.	200
Walter's Falls, N-11.	100	West Grove, 23 m from Parry Sound, K-14.	
Walton, R-8.	250	West Hill, York Co. •	
Wanstead, U-5, (Ry 10-m) †	130	West Huntingdon, P-22, (Ry 18-g) §	50
Wapasco, A-33.		West Huntley, L-27	300
Warburton, P-27.	100	West Lake, R-22.	
Wardsville, V-6 *	540	West Lorne, W-6.	250
Wareham, O-11.	25	West Magdala, V-7.	50
Warina, Stormont Co. •		West McGillivray, T-7.	45
Wariston, Hastings Co. •		Westmeath, I-25.	130
Warkworth, Q-20 *	800	Westminster, U-8, (Ry 10-a) †	600
Warmminster, N-15.	130	West Monkton, see Monkton, R-8.	
Warner, U-13.	25	West Montrose, R-11	300
Warsaw, P-19 *	200	Weston, H-22, (Ry 5-a) §	
Wartburgh, S-9	200	Weston, R-14, (Rys 10-a, 26-a) * † § ×	1000
Warwick, T-5 *	250	Weston Station, R-14, (Ry 20-a) §	
Washago, N-16, (Ry 20-c) †	180	West Osgoode, M-29.	100
Washburn, P-26	25	Westover, T-12.	100
Washburns, O-27.		Westport, O-26 *	550
Washington, T-10.	130	West Winchester, M-29 *	550
Waterdown, T-13 *	1000	Westwood, P-20.	100
Waterdown Station, T-13, (Ry 10-i) † †	25	Wexford, R-15.	150
Waterford, V-11, (Ry 4-a) * † †	1118	Whalen, T-7.	180
Waterloo, S-10, (Ry 10-c) * † §	2066	Whaley's Corners, S-13.	25
Waterloo, see Cataraqui, Q-25.	300	Whentley, Y-3.	100
Water Mill, near South Lonsdale,		Wheeler, 4 m W Oil Springs, V-5.	
Q-23.	100	Whitby, R-16, (Rys 10-a, 18-a) * † † §	3140
Watford, U-5, (Ry 10-m) * † †	1132	White, L-25	25
		White Church, P-8, (Ry 10-k) †	25
		Whitehurst, 1 m S Wofford, O-27.	200
		White Lake, L-26.	200
		White Oak, 3 m from Willow Grove, U-12.	
		White Rose, Q-15	100
		White's Station, V-8, (Ry 10-a) †	25
		Whitstone, Muskoka Dist. •	

	Towns, etc.—continued.	Pop. '81.
1	Whitevale, R-15 *	300
100	Whitfield, P-12.	500
200	Whitlington, Q-12.	75
50	Wlarton, M-2, (Ry 10-a) *	796
25	Wick, P-16, (Ry 18-a) † §	125
	Wicklow, R-20.	70
25	Widder, 2 m from Widder Station	
200	T-6	100
50	Widder Station, T-6, (Ry 10-a) §	500
	Wilberforce, Peterborough Co. *	
	Wilfrid, P-16	100
25	Wilkesport, V-1 *	50
100	Wilkie's Corners, 2 m from Flugal, V-7	60
150	Willetsholme, P-26.	100
870	Williamsburg, Q-10	200
25	Williamsburgh, S-11	100
25	Williamsford, N-10, (Ry 26-a) †	160
275	Williamsford Station, see Williamsford, N-10.	
	Williamstown, M-32 *	500
700	Williamsville, Kingston Co. *	
598	Will-croft, N-9	25
800	Willow Creek, O-8.	25
068	Willowdale, R-15.	10
100	Willow Grove, U-12.	80
	Wilmur, P-25.	300
25	Wilsonville, 7 m S W Courtland, V-10.	
90	Wilton, Q-21	200
200	Wilton Grove, V-8.	25
30	Winchelsea, S-7.	50
230	Winchester, N-30.	100
80	Winchester Springs, 5 m S Winchester	
42	chester	100
25	Windemoya, 24 m W Multowaning, H-8.	
250	Windermere, K-15.	60
	Windfall, 7 m N Wheatley, Y-3.	
200	Windham, V-10, (Ry 4-a) † ‡	25
14.	Windham Centre, 2 m S Teeserville, U-11.	100
50	Windsor, W-1, (Rys 4-a, 10-g) * † ‡	6561
300	Windfeld, R-10.	200
	Winger, V-11.	30
250	Wingham, P-8, (Ry 10-k, l) * † ‡	1918
50	Wingham Road, (Ry 26-b) × 5 m S	
45	Teeswater, P-8.	
130	Wingle, Renfrew Co. *	
500	Winona, U-13, (Ry 10-g) † ‡	200
300	Winstow, 3 m S Attercliff, V-13.	
	Winterbourne, S-11.	100
	Winthrop, R-8.	100
000	Wis. wassa, 90 m N Rosseau, K-15.	301
	Wisbeach, U-6.	
100	Woburn, R-15.	50
100	Wolf Island, Q-25.	500
550	Wolford, O-27, (Ry 5-b) §	25
550	Wolseley, M-10.	25

Towns, etc.—continued.	Pop. '81.
Wolverton, T-10, (Ry 8-a) † ‡	250
Woodbridge, R-14, (Ry 20-a) * † ‡	1100
Woodburn, U-13	100
Woodbury, U-10.	160
Woodlora, M-11.	100
Woodham, S-7 *	100
Woodhill, R-11	50
Woodland, N-31.	70
Woodlawn, Carleton Co. *	
Woodrose, 4 m S Pleton, R-23.	
Woodslee, X-2 *	150
Woodslee Station, X-2, (Ry 4-a) † ‡	25
Woodstock, T-9, (Rys 8-a, 10-d, g) *	
1 ‡ ‡	5373
Woodville, O-17, (Ry 18-a) * † ‡	600
Woodville Junction, O-17, (Ry 18-a, c) † ‡	25
Wooler, Q-21	300
Wroxeter, (Ry 26-b) † × 2 m N W Gorrie, Q-9.	
Wroxeter, Q-9 *	500
Wyandott, R-10.	150
Wye Bridge, N-14	225
Wyvale, (Ry 20-g) * × 9 m S Penetangulshene, M-11	250
Wyle, 27 m W Pembroke, T-21.	
Wyoming, U-5, (R. 10-m, n) * † ‡	886
Wyton, U-8	30
Yarker, P-24	400
Yarmouth, V-8, (Ry 10-a) †	25
Yarmouth Centre, V-5.	150
Yatton, R-10.	25
Yelverton, Q-17	25
Yeovil, P-10.	70
Yong Mills, P-28.	25
York, U-12 *	400
York Mills, R-15	250
York River, M-21	125
Yorkville, S-15 *	4825
Young's Point, O-19.	500
Youngsville, Oxford Co. *	52
Zealand, N-25, (Ry 11 §	100
Zephyr, P-15	200
Zetland, P-8.	60
Zimmerman, S-12, (Ry 20-b) §	100
Zion, R-18	25
Ziska, K-16	25
Zurich, S-7	500

THE PEOPLE'S LIBRARY

ILLUSTRATED.

FOR THE FARM AND HOUSEHOLD.

This is an authoritative work, embracing every department of Agriculture, and the correlative subjects, treated in plain and concise language, and brought down to the stand-point of to-day. It is fully illustrated in the best style of the engraver's art, and, it is hoped, will fill a long-felt want in American Agriculture. A work useful to every one, whatever the profession in life. Sold only by subscription.

Rand, McNally & Co.'s OVERLAND GUIDE

A TOURISTS' AND MINERS' GUIDE

FROM THE

Missouri River to the Pacific Ocean

—VIA—

KANSAS, COLORADO, NEW MEXICO, ARIZONA AND CALIFORNIA.

CHAS. S. GLEED, Editor.

Price, \$1.00 in Cloth, 50 cents in Paper. Mailed on receipt of price

THE WEST,

From the Census of 1880.

BY ROBERT P. PORTER,

Special Agent of the United States Census on Wealth, Debt and Taxation.

ASSISTED BY

HENRY GANNETT, S. B. AND E. M.,

Geographer and Special Agent of the Tenth Census,

—AND—

WILLIAM P. JONES, A. M.,

For six years United States Consul in China, Corresponding Member of the American Geographical Society, and Corresponding Member of the Royal Asiatic Society.

"Never was such a field for human energy offered to mankind as that which the Western States present—so vast, so free and so fair."

620 Pages. Svo. Cloth, Price, \$3.00.

Address, **RAND, McNALLY & CO. Publishers,**

CHICAGO.

RAND, MCNALLY & CO.'S

POCKET MAPS

— OF —

FOREIGN COUNTRIES.

Afghanistan, see Persia	\$
Africa, mounted on rollers, 65 x 58 inches	17 50
Africa, in three sheets, two being 21 x 14 inches, and one 14 x 14 inches, and showing plans of cities of Algiers and Tunis	75
Alaska, 14 x 11 inches. Not kept in stock	
Asia, mounted on rollers, 65 x 58 inches	17 50
Asia, 21 x 14 inches. Not kept in stock	
Australia and New Zealand, with plans of Sydney and Port Jackson, 21 x 14 in.	50
Austro-Hungarian Monarchy, with plan of Vienna, 21 x 14 inches	50
Belgium and The Netherlands, with plan of Brussels, 21 x 14 inches	50
British America (Dominion of Canada), 21 x 14 inches. Not kept in stock	
Central America, 14 x 11 inches	50
China, 21 x 14 inches	50
Cuba, 21 x 14 inches	50
Denmark, with North portion of the German Empire, comprising Schleswig, Holstein and Lauenburg, 14 x 14 inches	50
England and Wales, 21 x 14 inches, with Index of cities, towns, etc.	75
Europe, 21 x 14 inches	50
Europe, mounted on rollers, 65 x 58 inches	17 50
France, 21 x 14 inches, with plan of Paris, and Index to cities, towns, etc.	75
Germany, in two sheets, 21 x 14 inches each, with Index to cities, towns, etc.	1 00
Greece, and the Ionian Islands, 21 x 14 inches	50
India, Indo-China and other India, with plans of Calcutta and Bombay, 21 x 14 inches	50
Ireland, 21 x 14 inches, with Index to cities, towns, etc.	75
Italy, 21 x 14 inches	50
Japan, in two sheets, 21 x 14 inches each	1 00
Mexico, 21 x 14 inches	50
Netherlands see Belgium	
New Zealand, see Australia	
North America, mounted on rollers, 65 x 58 inches	17 50
North America, showing the West India Islands and Central America, 21 x 14 inches. Not kept in stock	
Palestine, with plan showing Environs of Jerusalem, journeyings of Christ, and sketch showing divisions into tribes 21 x 14 inches	50
Persia and Afghanistan, 14 x 11 inches	50
Portugal, see Spain	
Russia (European), 21 x 14 inches	50
Scotland, 21 x 14 inches, with Index to cities, towns, etc.	75
South America, mounted on rollers, 65 x 58 inches	17 50
South America, in two sheets, 21 x 14 inches, showing plans of Bay of Rio de Janeiro, Isthmus of Panama and City of Buenos Ayres	75
Spain and Portugal, with plans of Madrid and Lisbon, 21 x 14 inches	50
Sweden and Norway 21 x 14 inches	50
Switzerland, 21 x 14 inches	50
Turkey in Asia (Asia Minor), and Transcaucasia, 21 x 14 inches	50
Turkey in Europe, 21 x 14 inches	50
World, on Mercator's Projection, 21 x 14 inches	50

All of above pocket Maps are neatly bound in cloth cases.

We make the production of maps a specialty, and keep the largest stock of map plates in the country. Are prepared to furnish Authors and Publishers with maps to illustrate Books of Travel and Historical and Educational Works at a merely nominal charge over the cost of paper and printing.

Maps which require to be specially prepared, are compiled, engraved and printed with the utmost care and accuracy.

A full line of Maps of the States and Territories in U. S. and of Foreign countries, on a large scale; also, of Modern Geographical, Classical, Historical, Physical, Astronomical, Biblical, Anatomical and Biological Atlases, Globes and Map Racks, kept in stock.

RAND, MCNALLY & CO., Publishers, Chicago.

— THE —
BANKERS' DIRECTORY

OF THE
United States and Canada.

A most useful publication for business houses. The work is an octavo volume of 400 pages, handsomely printed and bound, containing:

- A list of Banks, Bankers and Savings Banks in the United States, with names of Officers, Capital and Correspondents.
- A list of Banks and Bankers in Canada, with names of Officers and United States Correspondents.
- A list of Cashiers of National, State and Private Banks.
- A list of Assistant Cashiers of National, State and Private Banks.
- The Clearing Houses in the United States, with names of Officers.
- A list of Brokers in New York City.
- The Commercial Laws of each State and Territory, including the Laws relating to Insolvency, Interest, Taxes, Notes and Bills of Exchange, etc.
- A list of reliable Commercial Lawyers.

(The publishers have inserted only the names of those Attorneys recommended by Banks and Bankers in their own locality, thus making the list to contain only such names as have the confidence of the community in which they reside.)

Parties making their own collections and whose business covers a wide extent of territory, will appreciate the special features of this new compilation, and find it an invaluable reference book for office use.

PRICE, THREE DOLLARS.

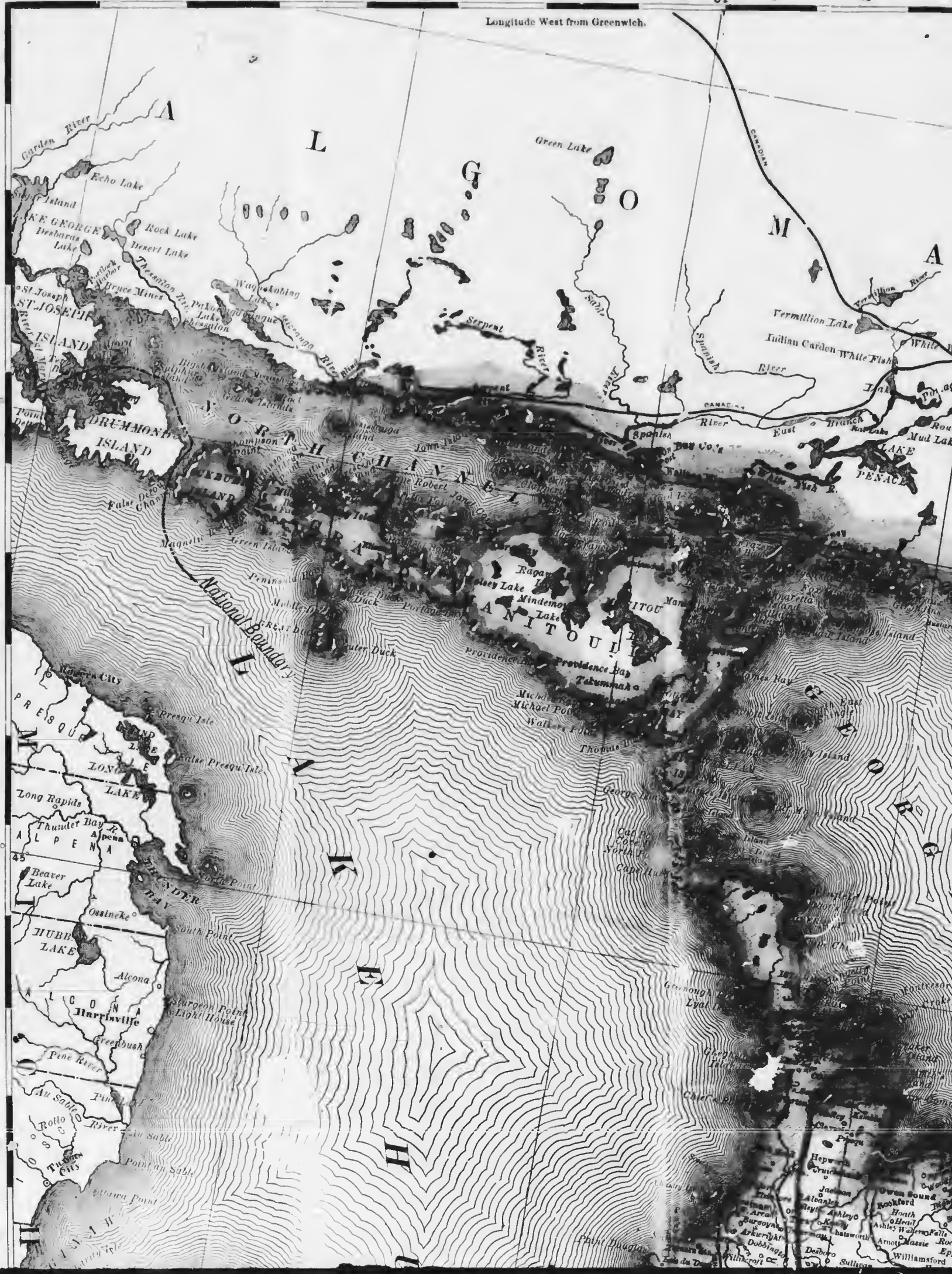
Sent Prepaid, by Mail, to any Address.

RAND, McNALLY & CO., Publishers,
CHICAGO, ILL.



Longitude West from Greenwich.

A
B
C
D
E
F
G
H
I
J
K
L
M
N





A

Q

M

U

S

N

E

P

I

S

S

I

N

G

H

A

H

H

H

H

H

H

H

H

H

H

H

H

H

H

H

H

H

H

H

H

H

H

H

H

H

H

H

H

H

H

H

H

H

H

H

H

H

H

H

H

H

H

H

H

H

H

H

H

H

H

H

H

H

H

H

H

H

H

H

H

H

H

H

H

H

H

H

H

H

H

H

H

H

H

H

H

H

H

H

H

H

H

H

H

H

H

H

H

H

H

H

H

H

H

H

H

H

H

H

H

H

H

H

H

H

H

H

H

H

H

H

H

H

H

H

H

H

H

H

H

H

H

H

H

H

H

H

H

H

H

H

H

H

H

H

H

H

H

H

H

H

H

H

H

H

H

H

H

H

H

H

H

H

H

H

H

H

H

H

H

H

H

H

H

H

H

H

H

H

H

H

H

H

H

H

H

H

H

H

H

H

H

H

H

H

H

H

H

H

H

H

H

H

H

H

H

H

H

H

H

H

H

H

H

H

H

H

H

H

H

H

H

H

H

H

H

H

H

H

H

H

H

H

H

H

H

H

H

H

H

H

H

H

H

H

H

H

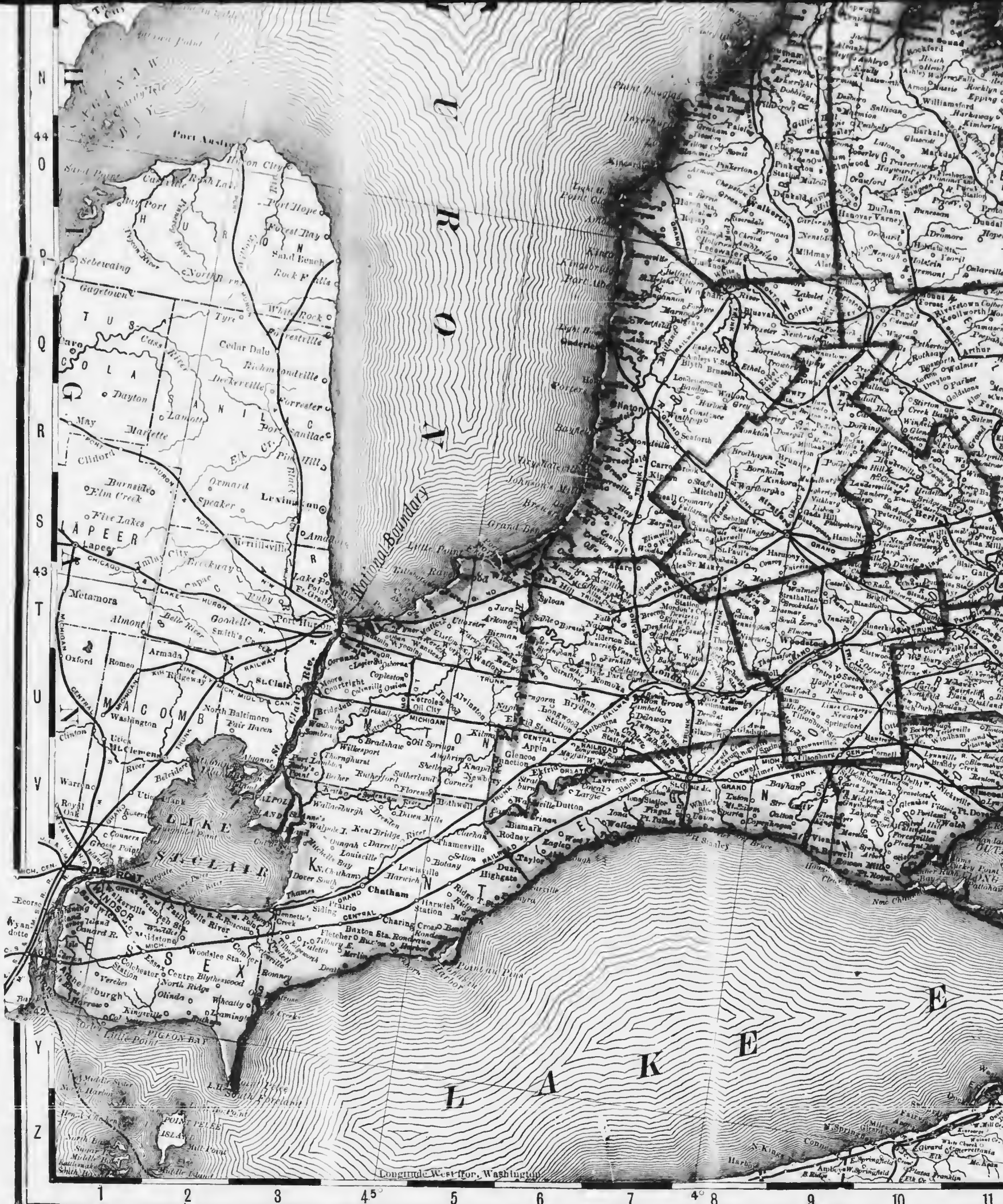
H



NORTH WESTERN PART OF ONTARIO



A
B
C
D
E
F
G
H
I
J
K
L
M
N



N
44
O
P
Q
R
S
T
U
V
Y
Z

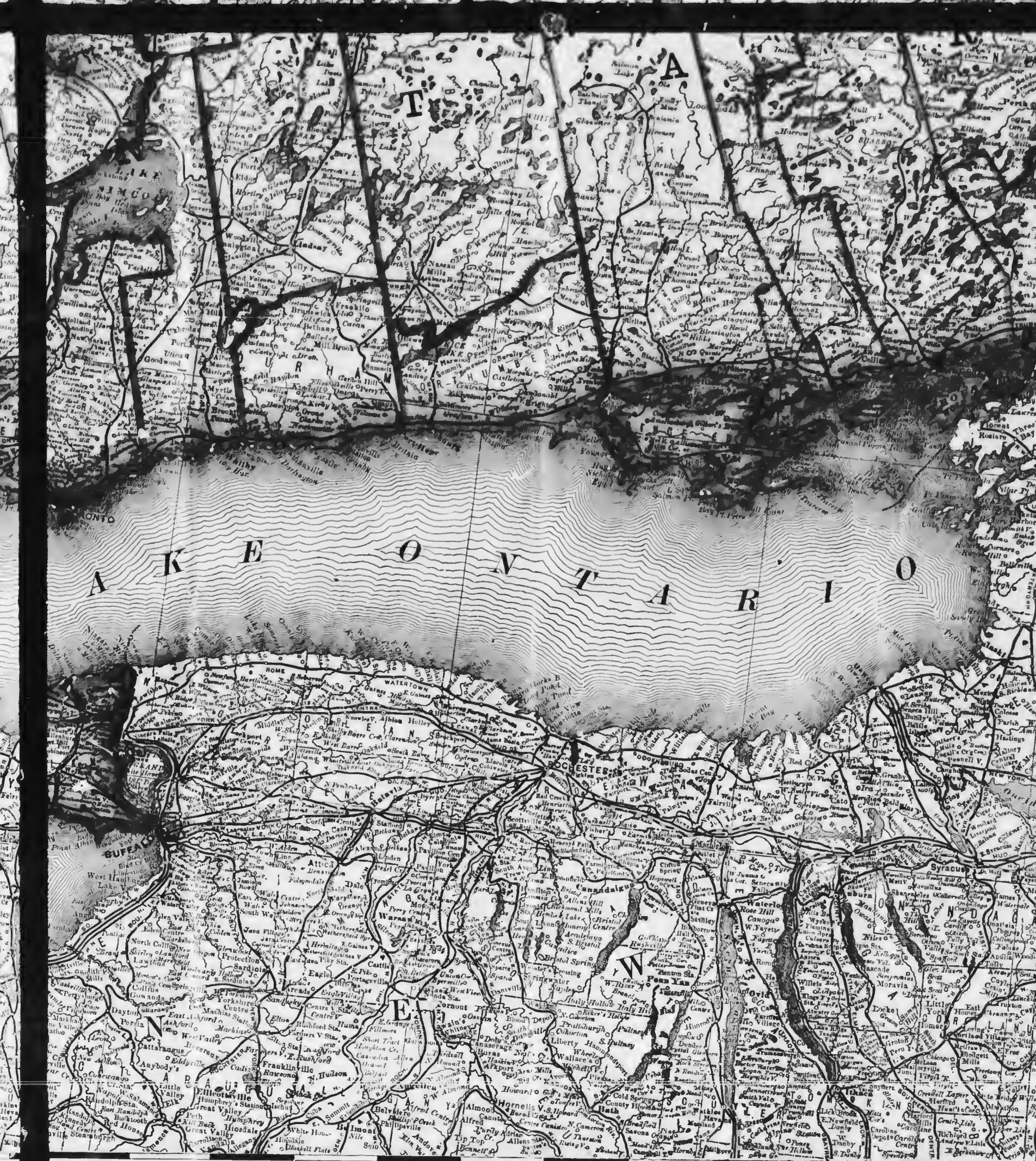
National Boundary

Longitude West from Washington

1 2 3 45 5 6 7 48 9 10 11



11 3° 12 13 14 15 2° 16 17 18 19 20 21 22 0



15° 16 17 18 19 20 21 22° 23 24 25 26



RAND, McNALLY & CO.'S

New Railroad & County Map

OF THE

Province of Ontario

COMPILED FROM THE
LATEST GOVERNMENT SURVEYS,
AND DRAWN TO AN ACCURATE SCALE.

Copyright 1883, by RAND, McNALLY & CO., Chicago.



Longitude East from Washington.

1° 26 27 28 29 30 31 32 33 34 35 36

M
N
O
P
Q
R
S
T
U
V
W
X
Y
Z

BANK

Unit

*A most useful
work is as
specially*

A list of Banks,
with names of

A list of Banks of
United States

A list of Cashiers

A list of Assistants

The Clearing House

A list of Brokers

The Commercial
Laws relating to
Exchange, etc.

A list of reliable

(The publications
recommended by Bankers
contain only such
as they reside.)

Parties make
a wide extent of
new compilation
use.

PRICE:

R.

CHICAGO, ILL.

Score

RAND, McNALLY & CO.'S

SERIES OF INDEXED POCKET MAPS

Sent by mail, postpaid, in Florida (add postage) upon receipt of
following prices (cash or money order stamps)

	Index Maps.	Maps with- out Index
Alabama	.50	
Arizona Territory	.50	
Arkansas	.50	
California, County Map of	.50	
California, Large County Map of	1.00	
Colorado, Township	.50	
Colorado, National	.50	
Canada, Geological and Mineralogical	.50	
Canada, National	.50	
Dakota Territory	.50	
Delaware	.50	
Florida Territory and Texas, in one book	.50	
Georgia	.50	
Idaho, National	.50	
Idaho Territory	.50	
Illinois	.50	
Indiana	.50	
Iowa Territory and Texas, in one book	.50	
Kansas	.50	
Kansas, National	.50	
Maryland and Delaware, in one book	.50	
Massachusetts	.50	
Michigan	.50	
Minnesota	.50	
Mississippi	.50	
Missouri	.50	
Montana Territory	.50	
Nebraska	.50	
Nebraska, National	.50	
Nevada	.50	
New York	.50	
North Carolina	.50	
North Dakota Territory	.50	
Ohio	.50	
Oklahoma Territory	.50	
Oregon	.50	
Oregon, National	.50	
Pennsylvania	.50	
Rhode Island	.50	
South Carolina	.50	
South Dakota Territory	.50	
Texas	.50	
Texas and Indian Territory, in one book	.50	
Texas, Large Map of	1.00	
United States from Atlantic Coast to Rocky Mountains	.50	
United States from Atlantic to Pacific	.50	
Utah Territory	.50	
Vermont	.50	
Virginia	.50	
Washington Territory	.50	
West Virginia	.50	
Wisconsin	.50	
Wyoming Territory	.50	

Indexed Maps, bound in cloth, 25 cents extra. Discount to the Trade.
Agents wanted in every State and Territory in the United States.

Address,
RAND, McNALLY & CO.,
143 to 154 Monroe Street, CHICAGO.

