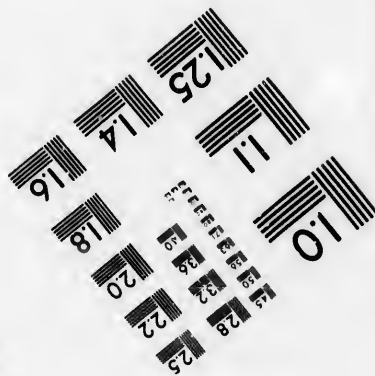
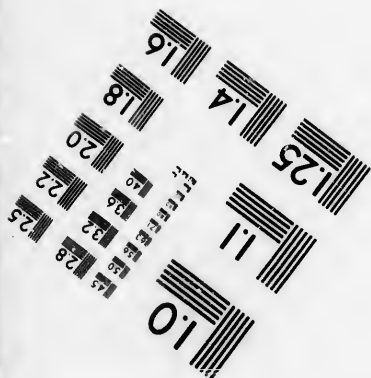
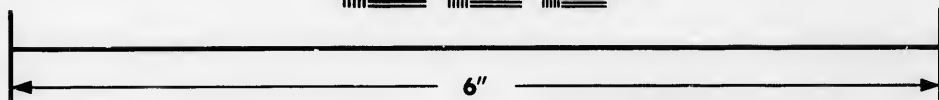
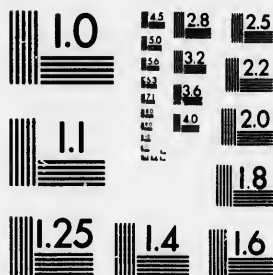


**IMAGE EVALUATION  
TEST TARGET (MT-3)**



**Photographic  
Sciences  
Corporation**

23 WEST MAIN STREET  
WEBSTER, N.Y. 14580  
(716) 872-4503

13  
16  
18  
20  
22  
25

**CIHM/ICMH  
Microfiche  
Series.**

**CIHM/ICMH  
Collection de  
microfiches.**



**Canadian Institute for Historical Microreproductions / Institut canadien de microreproductions historiques**

10  
11  
12  
13  
14  
15

**© 1986**

Technical and Bibliographic Notes/Notes techniques et bibliographiques

The Institute has attempted to obtain the best original copy available for filming. Features of this copy which may be bibliographically unique, which may alter any of the images in the reproduction, or which may significantly change the usual method of filming, are checked below.

L'Institut a microfilmé le meilleur exemplaire qu'il lui a été possible de se procurer. Les détails de cet exemplaire qui sont peut-être uniques du point de vue bibliographique, qui peuvent modifier une image reproduite, ou qui peuvent exiger une modification dans la méthode normale de filmage sont indiqués ci-dessous.

- |  |  |
|--|--|
| <input type="checkbox"/> Coloured covers/<br>Couverture de couleur   | <input type="checkbox"/> Coloured pages/<br>Pages de couleur   |
| <input type="checkbox"/> Covers damaged/<br>Couverture endommagée  | <input type="checkbox"/> Pages damaged/<br>Pages endommagées   |
| <input type="checkbox"/> Covers restored and/or laminated/<br>Couverture restaurée et/ou pelliculée  | <input type="checkbox"/> Pages restored and/or laminated/<br>Pages restaurées et/ou pelliculées  |
| <input type="checkbox"/> Cover title missing/<br>Le titre de couverture manque   | <input checked="" type="checkbox"/> Pages discoloured, stained or foxed/<br>Pages décolorées, tachetées ou piquées   |
| <input type="checkbox"/> Coloured maps/<br>Cartes géographiques en couleur   | <input type="checkbox"/> Pages detached/<br>Pages détachées  |
| <input type="checkbox"/> Coloured ink (i.e. other than blue or black)/<br>Encre de couleur (i.e. autre que bleue ou noire)   | <input checked="" type="checkbox"/> Showthrough/<br>Transparence   |
| <input type="checkbox"/> Coloured plates and/or illustrations/<br>Planches et/ou illustrations en couleur  | <input type="checkbox"/> Quality of print varies/<br>Qualité inégale de l'impression   |
| <input type="checkbox"/> Bound with other material/<br>Relié avec d'autres documents   | <input type="checkbox"/> Includes supplementary material/<br>Comprend du matériel supplémentaire   |
| <input type="checkbox"/> Tight binding may cause shadows or distortion<br>along interior margin/<br>La reliure serrée peut causer de l'ombre ou de la<br>distorsion le long de la marge intérieure   | <input type="checkbox"/> Only edition available/<br>Seule édition disponible   |
| <input type="checkbox"/> Blank leaves added during restoration may<br>appear within the text. Whenever possible, these<br>have been omitted from filming/<br>Il se peut que certaines pages blanches ajoutées<br>lors d'une restauration apparaissent dans le texte,<br>mais, lorsque cela était possible, ces pages n'ont<br>pas été filmées. | <input type="checkbox"/> Pages wholly or partially obscured by errata<br>slips, tissues, etc., have been refilmed to<br>ensure the best possible image/<br>Les pages totalement ou partiellement<br>obscurcies par un feuillet d'errata, une pelure,<br>etc., ont été filmées à nouveau de façon à<br>obtenir la meilleure image possible. |

Additional comments: [Printed ephemera] 1 sheet (verso blank)  
Commentaires supplémentaires:

This item is filmed at the reduction ratio checked below/  
Ce document est filmé au taux de réduction indiqué ci-dessous.

10X	12X	14X	16X	18X	20X	22X	24X	26X	28X	30X	32X
								✓			

The copy filmed here has been reproduced thanks to the generosity of:

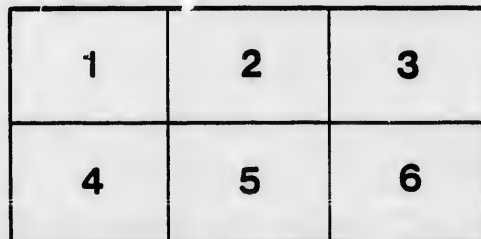
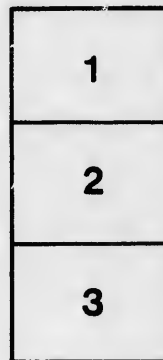
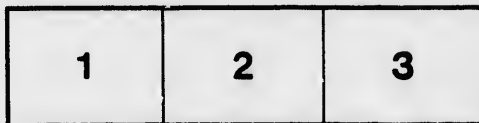
Manuscript Division  
Public Archives of Canada

The images appearing here are the best quality possible considering the condition and legibility of the original copy and in keeping with the filming contract specifications.

Original copies in printed paper covers are filmed beginning with the front cover and ending on the last page with a printed or illustrated impression, or the back cover when appropriate. All other original copies are filmed beginning on the first page with a printed or illustrated impression, and ending on the last page with a printed or illustrated impression.

The last recorded frame on each microfiche shall contain the symbol  $\rightarrow$  (meaning "CONTINUED"), or the symbol  $\nabla$  (meaning "END"), whichever applies.

Maps, plates, charts, etc., may be filmed at different reduction ratios. Those too large to be entirely included in one exposure are filmed beginning in the upper left hand corner, left to right and top to bottom, as many frames as required. The following diagrams illustrate the method:



L'exemplaire filmé fut reproduit grâce à la générosité de:

Division des manuscrits  
Archives publiques du Canada

Les images suivantes ont été reproduites avec le plus grand soin, compte tenu de la condition et de la netteté de l'exemplaire filmé, et en conformité avec les conditions du contrat de filmage.

Les exemplaires originaux dont la couverture en papier est imprimée sont filmés en commençant par le premier plat et en terminant soit par la dernière page qui comporte une empreinte d'impression ou d'illustration, soit par le second plat, selon le cas. Tous les autres exemplaires originaux sont filmés en commençant par la première page qui comporte une empreinte d'impression ou d'illustration et en terminant par la dernière page qui comporte une telle empreinte.

Un des symboles suivants apparaîtra sur la dernière image de chaque microfiche, selon le cas: le symbole  $\rightarrow$  signifie "A SUIVRE", le symbole  $\nabla$  signifie "FIN".

Les cartes, planches, tableaux, etc., peuvent être filmés à des taux de réduction différents. Lorsque le document est trop grand pour être reproduit en un seul cliché, il est filmé à partir de l'angle supérieur gauche, de gauche à droite, et de haut en bas, en prenant le nombre d'images nécessaire. Les diagrammes suivants illustrent la méthode.

etails  
s du  
odifier  
une  
image

rrata  
to

pelure,  
n à



32X

1867



# Proclamation

**TOWN of BRANTFORD,**  
*TO WIT:*

**WHEREAS,** we the  
trates for the Town of Brantford, ha  
intention of certain persons to meet an

## TOWN OF BR

**On the 12th day of**

**Distinguished by Ribbons, Favors, a**  
**party feelings, and Whereas, by an**  
**Province, 5th Vic. cap. 6, entitled "**

H. 1869



# Information!

The undersigned Magistrates, have been informed that it is the intention to meet and march in Procession within the

## BRANTFORD,

on the 1st day of July, instant,

to wear Hats, and other Emblems expressive of Liberty, by an Act of the Parliament of this Great Britain, intitled "An Act to restrain Party Proceedings..."

Distinguished by Ribbons, Favors, and party feelings, and Whereas, by an Act of the Province, 7th Vic. cap. 6, entitled "*cessions in certain cases.*" It is there

"That any body of persons who shall meet and par  
purpose, and any body of persons who shall march or  
purpose of celebrating or commemorating any FES  
EVENT, relating to or connected with any religious o  
classes of Her Majesty's subjects, or of demonstrating  
ences, and who shall bear, wear or have amongst them  
any *BANNER, EMBLEM, FLAG or SYMBOL*  
shall tend to provoke animosity between Her Majesty's  
who shall be accompanied by *any music of a like nature*  
*lawful assembly*, and every person present thereat shall be and be deemed to be guilty  
punished by fine and imprisonment or either, at the discretion of the Court, whose  
his conviction."

Now, in conformity with the powers vested in us by the Act ab  
PEACE, we do hereby warn and forbid all persons from violating any of the provisions

(Signed)

P. C. VA  
A. K. SM  
J. D. CI  
JOHN S  
A. KIRI

BRANTFORD, July 11, 1850.

avors, and other Emblems expressive of  
as, by an Act of the Parliament of this  
ntitled "*An Act to restrain Party Pro-*  
It is therein enacted :

meet and parade together, or join in procession for any such  
all march or parade together, or join in procession for the  
g any **FESTIVAL, ANNIVERSARY, or POLITICAL**  
y religious or other distinctions or differences, between any  
monstrating any such religious or other distinctions or differ-  
amongst them any fire arms or other offensive weapons, or  
or **SYMBOL**, the display whereof shall be calculated, or  
er Majesty's subjects of different religious persuasions, or  
a like nature or tendency shall be, and be deemed an un-  
deemed to be guilty of a misdemeanor, and shall upon conviction thereof be liable to be  
the Court, whose duty it shall be to pass the sentence of the law upon such person upon

by the Act above cited, and for the **PRESERVATION OF THE**  
y of the provisions of the said Act, and strictly enjoin all persons to keep the Peace.

**C. VANBROCKLIN, Mayor.**  
**K. SMITH, J. P.**  
**D. CLEMENT, J. P.**  
**HN STEELE, J. P.**  
**KIRKLAND, J P**



