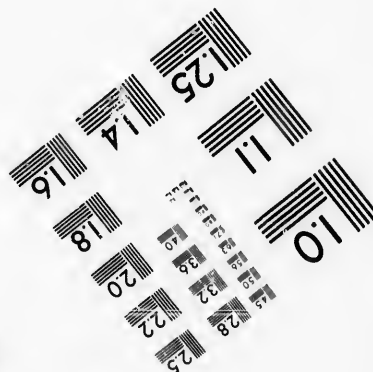
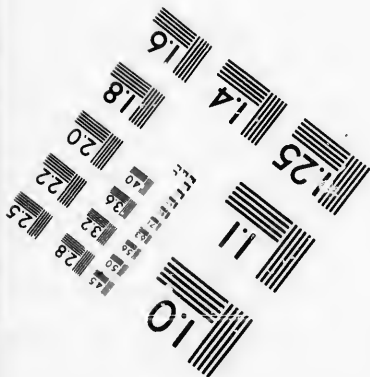
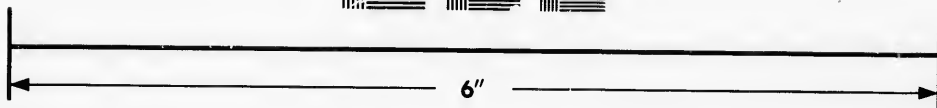
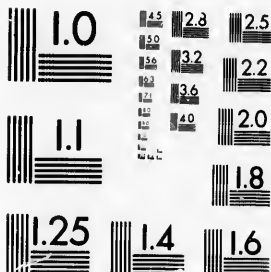


**IMAGE EVALUATION  
TEST TARGET (MT-3)**



**Photographic  
Sciences  
Corporation**

23 WEST MAIN STREET  
WEBSTER, N.Y. 14580  
(716) 872-45C3

**CIHM/ICMH  
Microfiche  
Series.**

**CIHM/ICMH  
Collection de  
microfiches.**



**Canadian Institute for Historical Microproductions / Institut canadien de microreproductions historiques**

**© 1986**

Technical and Bibliographic Notes/Notes techniques et bibliographiques

The Institute has attempted to obtain the best original copy available for filming. Features of this copy which may be bibliographically unique, which may alter any of the images in the reproduction, or which may significantly change the usual method of filming, are checked below.

L'Institut a microfilmé le meilleur exemplaire qu'il lui a été possible de se procurer. Les détails de cet exemplaire qui sont peut-être uniques du point de vue bibliographique, qui peuvent modifier une image reproduite, ou qui peuvent exiger une modification dans la méthode normale de filmage sont indiqués ci-dessous.

- |   |   |
|---|---|
| <input type="checkbox"/> Coloured covers/<br>Couverture de couleur  | <input type="checkbox"/> Coloured pages/<br>Pages de couleur  |
| <input type="checkbox"/> Covers damaged/<br>Couverture endommagée   | <input type="checkbox"/> Pages damaged/<br>Pages endommagées  |
| <input type="checkbox"/> Covers restored and/or laminated/<br>Couverture restaurée et/ou pelliculée   | <input type="checkbox"/> Pages restored and/or laminated/<br>Pages restaurées et/ou pelliculées   |
| <input type="checkbox"/> Cover title missing/<br>Le titre de couverture manque  | <input checked="" type="checkbox"/> Pages discoloured, stained or foxed/<br>Pages décolorées, tachetées ou piquées  |
| <input type="checkbox"/> Coloured maps/<br>Cartes géographiques en couleur  | <input type="checkbox"/> Pages detached/<br>Pages détachées   |
| <input type="checkbox"/> Coloured ink (i.e. other than blue or black)/<br>Encre de couleur (i.e. autre que bleue ou noire)  | <input checked="" type="checkbox"/> Showthrough/<br>Transparence  |
| <input type="checkbox"/> Coloured plates and/or illustrations/<br>Planches et/ou illustrations en couleur   | <input type="checkbox"/> Quality of print varies/<br>Qualité inégale de l'impression  |
| <input type="checkbox"/> Bound with other material/<br>Relié avec d'autres documents  | <input type="checkbox"/> Includes supplementary material/<br>Comprend du matériel supplémentaire  |
| <input type="checkbox"/> Tight binding may cause shadows or distortion along interior margin/<br>La reliure serrée peut causer de l'ombre ou de la distorsion le long de la marge intérieure  | <input type="checkbox"/> Only edition available/<br>Seule édition disponible  |
| <input type="checkbox"/> Blank leaves added during restoration may appear within the text. Whenever possible, these have been omitted from filming/<br>Il se peut que certaines pages blanches ajoutées lors d'une restauration apparaissent dans le texte, mais, lorsque cela était possible, ces pages n'ont pas été filmées. | <input type="checkbox"/> Pages wholly or partially obscured by errata slips, tissues, etc., have been refilmed to ensure the best possible image/<br>Les pages totalement ou partiellement obscurcies par un feuillet d'errata, une pelure, etc., ont été filmées à nouveau de façon à obtenir la meilleure image possible. |
| <input checked="" type="checkbox"/> Additional comments: / [Printed ephemera] [4] p.<br>Commentaires supplémentaires:   |   |

This item is filmed at the reduction ratio checked below/  
Ce document est filmé au taux de réduction indiqué ci-dessous.

10X	12X	14X	16X	18X	20X	22X	24X	26X	28X	30X	32X
									/		

The copy filmed here has been reproduced thanks to the generosity of:

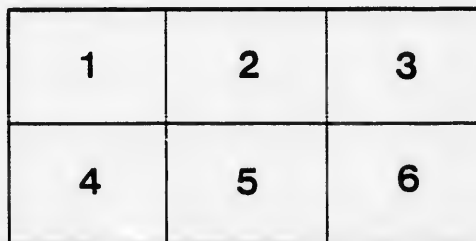
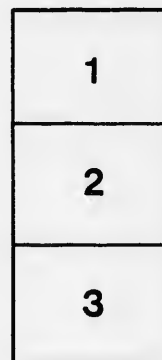
D. B. Weldon Library  
University of Western Ontario  
(Regional History Room)

The images appearing here are the best quality possible considering the condition and legibility of the original copy and in keeping with the filming contract specifications.

Original copies in printed paper covers are filmed beginning with the front cover and ending on the last page with a printed or illustrated impression, or the back cover when appropriate. All other original copies are filmed beginning on the first page with a printed or illustrated impression, and ending on the last page with a printed or illustrated impression.

The last recorded frame on each microfiche shall contain the symbol  $\rightarrow$  (meaning "CONTINUED"), or the symbol  $\nabla$  (meaning "END"), whichever applies.

Maps, plates, charts, etc., may be filmed at different reduction ratios. Those too large to be entirely included in one exposure are filmed beginning in the upper left hand corner, left to right and top to bottom, as many frames as required. The following diagrams illustrate the method:



L'exemplaire filmé fut reproduit grâce à la générosité de:

D. B. Weldon Library  
University of Western Ontario  
(Regional History Room)

Les images suivantes ont été reproduites avec le plus grand soin, compte tenu de la condition et de la netteté de l'exemplaire filmé, et en conformité avec les conditions du contrat de filmage.

Les exemplaires originaux dont la couverture en papier est imprimée sont filmés en commençant par le premier plat et en terminant soit par la dernière page qui comporta une empreinte d'impression ou d'illustration, soit par le second plat, selon le cas. Tous les autres exemplaires originaux sont filmés en commençant par la première page qui comporta une empreinte d'impression ou d'illustration et en terminant par la dernière page qui comporta une telle empreinte.

Un des symboles suivants apparaîtra sur la dernière image de chaque microfiche, selon le cas: le symbole  $\rightarrow$  signifie "A SUIVRE", le symbole  $\nabla$  signifie "FIN".

Les cartes, planches, tableaux, etc., peuvent être filmés à des taux de réduction différents. Lorsque le document est trop grand pour être reproduit en un seul cliché, il est filmé à partir de l'angle supérieur gauche, de gauche à droite, et de haut en bas, en prenant le nombre d'images nécessaire. Les diagrammes suivants illustrent la méthode.

**READ AND REFLECT.**

NOTICE TO OUR PATRONS—If the individual members of an audience would stop to think for just an instant, they would undoubtedly appreciate the fact that the habit of rising from one's seat and leaving the theatre before the curtain falls, is a most annoying one, and one that should be stopped. We therefore beg our audiences to kindly remain in their seats until the close of the performance.

Evenings—doors open at 7:30; curtain rises at 8:15 sharp. Matinees—doors open at 1:30; curtain rises at 2:30 sharp.

Plan opens for each attraction two days in advance.



Seats can be secured by mail, telegraph or telephone. Telephone 732.  
Physicians are requested to register at the Box Office, leaving seat number, as this will enable Ushers to find them if called for, without disturbing the audience.  
Carriages can be ordered at the Box Office or of the Chief Usher.  
Please report to the management any intimation on the part of the employees.  
Overcoats, packages and umbrellas checked for a small charge.  
For all lost articles apply at Box Office.  
Opera Glasses can be rented by applying to Ushers or at Box Office.  
It is strange, but there is a class of people that seem to take an intense delight in bespattering the floor with tobacco juice and in being boisterous and using profane language. These people should know at once that the courts authorize their immediate expulsion, should the management see fit to exercise its rights.

BETWEEN the Acts, and after the Opera is over go to the  
**OPERA + CIGAR**

+ **STORE** +

For Cigars, Cigarettes, Etc.  
**LOUIS RISK.**

**W. T. STRONG,**

Dispensing +  
+ + **Chemist**

184 Dundas Street,  
LONDON - - - ONTARIO.

*Rivard*

LEADS THEM ALL.

PRICES WILL TELL.

**Furs! Furs! Furs!**  
IN ALL THE LATEST STYLES.

**Hats! Hats! Hats!**  
Latest New York and English Styles.

The Cheapest House in the City.  
A Pleasure to Show Goods.  
400 Richmond St., LONDON, ONT.

C. J. WHITNEY ..... ASSISTANT MANAGER  
A. E. ROOTE ..... REPRESENTATIVE  
FRED. L. EVANS ..... DIRECTOR OF ORCHESTRA  
GUS. SCHABACKER ..... STAGE MANAGER  
JAMES LAMB ..... CHIEF USHER.

Thursday, March 2nd, 1893.

+ **PROGRAMME.** +

Engagement of the World's Famous  
Tragedienne,

**MADAME JANUSCHEK,**

SUPPORTED BY

**MR. EDMUND COLLIER**

And a carefully selected Company,  
all under the Management of FRANK V. HAWLEY.

**MACBETH**

(Programme continued on Page 3.)

WHEN YOU REQUIRE

**First-Class Fashionable Footwear**

OF THE LATEST

ENGLISH, AMERICAN AND PARISIAN STYLES,  
CALL AT

145 DUNDAS STREET  
(D. Regan's old stand.)

All our Overshoes, Felts and Lined Rubbers will be sold at cost, as I must make room for my Elegant Spring and Summer Goods arriving daily.

**JNO. S. BROWN**  
TELEPHONE 881.

**OUR PROGRAM.**

- FOR THE PEOPLE'S PERPETUAL PIC-NIC!
- THE GENUINE—**  
Heintzman & Co., Pianos!
- THE WORLD-FAMED—**  
Emerson Pianos!
- THE UNEQUALLED—**  
Goderich Organs!
- THE PERFECT—**  
White Sewing Machines!
- AN ENDLESS DISPLAY OF—**  
Small Musical Instruments!
- A MODEL ASSORTMENT OF—**  
Strings, Fittings, Music Books, Etc.
- THE ALL-IMPORTANT—**  
Marriage Licenses!

These and countless other good things can be obtained at "COLWELL'S POPULAR MUSIC HOUSE," 171 Dundas Street, LONDON.

WE KEEP A FIRST-CLASS MUSIC STORE.

Our prices and terms are the most reasonable. We deal very liberally with everybody. From distant buyers we invite orders by Mail, Telephone or Telegraph.

**C. P. M. H. Leads all Competitors.**  
**CHAS. F. COLWELL, Proprietor.**

The only place in the City to get the latest

**SCARFS.**

*Burns*

\* The Furnisher.

**A MAN**

Wants to see you Between Acts

**Jerry McDonald's**

Across the Road.  
181 KING STREET.

# Burns

\* \* **SAYS**  
That the D B. Sac Suit  
Will lead this Fall.

AND HE IS RIGHT.

## GREAT PRIZE SALE

Every Cash Customer buying One Dollar's  
worth or more of

WALL PAPER, \*  
WINDOW SHADES,  
CORNICE POLES,  
ARTISTS' MATERIALS,  
PICTURE FRAMES,  
\* PICTURES,  
ETC., ETC., ETC.

Stands the chance of securing a Prize worth from \$1.00  
to \$20.00 according to amount of purchase.

**E. N. HUNT,**  
190 DUNDAS ST., LONDON.

## OUR NEXT ATTRACTION!

A Positive and Popular Hit.  
The Laughing World has Never Seen its Equal.  
**SATURDAY MATINEE AND NIGHT.**

### PRICES

Matinee, 25c., 50c. and 75c.  
Children to any part of the house, 25c.  
Night, 25c., 50c., 75c. and \$1.00.

COMIC OPERA,  
Farce-Comedy  
MINSTRELSY,  
BURLESQUE  
AND EVEN  
GRAND OPERA.  
A WHIRLWIND  
OF FUN,  
A CYCLONE  
OF LAUGHTER.

All Happily Combined in  
**GEO. THATCHER'S**  
Minstrel Farce Comedy Creation  
**TUXEDO**  
WRITTEN BY ED. MARBLE,  
And Presented by the Combined forces of  
**Geo. Thatcher's Minstrels**  
—AND—  
**RICH & HARRIS'**  
**COMEDY COMPANY.**

In presenting "TUXEDO" to the patrons of the Grand,  
the manager can confidently assure them a most novel,  
original and thoroughly enjoyable entertainment. "Tux-  
edo" made a splendid reputation all over the country  
last season, and this year it comes in a complete new  
dress, having been rewritten by the author, who has  
filled it with the brightest, cleverest sort of fun, musical  
gems well sung, amusing situations and entertaining  
specialties. The same excellent cast as characterized its  
production last season has been retained, every member  
of which is a clever artist.

## Marshall's \* Mammoth \* Livery

IS THE LARGEST AND THE OLDEST  
ESTABLISHMENT IN THE CITY.

DOES THE LEADING BUSINESS IN

Carriages, Cabs, Coupes, \*  
\* Victorias, Busses, Etc.

Every kind of Conveyance can be had there on the  
shortest notice, by Telephone No. 436.

**JAS. S. MARSHALL, Proprietor.**  
Dundas Street. London, Ont.

**JAMES KILGOUR,**  
Furniture Dealer and Uphoisterer

MANUFACTURER OF ALL KINDS OF

FINE PARLOR WORK,  
HAIR MATTRESSES  
AND COUCHES.

If You Wish a Good Article go to

**KILGOUR'S**

353 RICHMOND STREET.

For Fashionable  
**WELL MADE SUITS**

... CALL ON ...

# Burns

The Tailor,  
Dundas Street.

## Artistic \* Floral \* Design

EITHER WEDDING, PRESENTATION, DINNER TABLE, OR FUNERAL.

GO TO **DILLOWAY,**

The Leading Florist.

248 Dundas Street.

Choicest Cut Flowers Always on Hand.

TELEPHONE 227.

If you see it in the "London Free Press" it is so.

◀AFTER THE PERFORMANCE▶

—STOP AT—

**Harry McKenna's,**

—FOR—

**Choice Havana Cigars &  
\* \* Tobacco Sundries.**

225 Dundas Street.

Always Open After Performance.

**SMITH BROS.**

**Plumbers,  
Steam and Gas Fitters.**

ESTIMATES FURNISHED ON APPLICATION.

All Work Warranted.      Terms Moderate.

376 RICHMOND STREET.  
(Opposite Masonic Temple.)

Telephone No. 538.

**THE TECUMSEH.**

London, Ontario.



**Leading Hotel of Western Ontario.**

Large Sample Rooms Free of Charge.  
Baggage and Passenger Elevator.

Only one Block from the Grand Opera House.

**C. W. DAVIS,**  
PROPRIETOR.

**White · Sulphur · Springs · Baths**  
FAMOUS HEALTH RESORT.

**The Saratoga of Canada.**  
IN CONNECTION WITH THE HOTEL.

Great Attraction to Visitors Seeking Health.

C. W. DAVIS,      A. D. HOLMAN,  
Treasurer.      Manager

\* THE LATEST ENGLISH \*  
**Collars, · Cuffs · and · Shirts.**  
ALL SIZES ALWAYS IN STOCK.

**Burns**

—DUNDAS STREET.—

PROGRAMME CONTINUED.

Cast of Characters.

MACBETH, Chief-General of Duncan's forces, afterwards  
King of Scotland. . . . . EDMUND COLLIER  
King Duncan, cousin of Macbeth. . . . . D. Hanchett  
Malcolm, } Sons of Duncan, { . . . . . Wilbur Hudson  
Donaldban, } . . . . . Rachel M. Clarke  
Banquo, one of Duncan's Generals. . . . . J. W. Thompson  
Fleance, his son. . . . . Master Geo. Lamberson  
Macduff, } Nobles of Scotland, { . . . . . Joseph Ransome  
Lenox, } . . . . . Henry Keiffer  
Rosse, } . . . . . Gilmore Scott  
Seyton, an Officer, } Attendants on Macbeth, { . . . . . Martin Brewer  
Bleeding Sergeant, } . . . . . George Connor  
Messenger Officer, } . . . . . Michael Eagan  
A Murderer, } . . . . . R. Hammel  
The Murderer, } . . . . . L. C. Reeves  
Physician, } Attendants on Lady { . . . . . Geo. Limeburner  
Gentlewoman, } Macbeth, { . . . . . Flora Dauncey  
1st Witch, } The Wierd Sisters of { . . . . . Mary Timberman  
2nd Witch, } Archeron Pit, { . . . . . Ada Austin  
3rd Witch, } . . . . . Agnes Burroughs

—AND—

LADY MACBETH. . . . . MADAME JANAUSCHEK

Programme Continued on Page 4.

The bent pin generally carries its point, so do Beltz's Hats.

**E. Beltz, 144 Dundas St.**

**LEADING FASHIONABLE HATTER & FURRIER.**

FINE QUALITY      GOLD MEDAL

**HATS.      FURS.**

A Messenger Boy's Diary.

Monday—hired. Tuesday—tired. Wednesday—fired.

—OUR FURS—

First Season—pleased; Second Season—delighted; Third Season—  
Most satisfactory article you ever owned.

THE LEADING JEWELRY HOUSE  
OF LONDON.

**Diamonds, Watches,  
· · and Fine Jewelry.**

OPERA GLASSES FOR RENT.  
**THOS. GILLEAN,**  
402 Richmond Street.  
Issuer of Marriage Licenses.

For Fine Finished Artistic Photos

**Westlake's** \*  
\* **Famous Studio**  
201 Dundas Street.

Get the Latest Novelties.  
Photo Etchings and Aristo Finish.  
**STUDIO ALL ON GROUND FLOOR.**  
City Views can be had. Phone 571.

**Wallace's Dining Hall**

**AND CONFECTIONERY.**

354 Richmond Street.

Lunches at all hours.  
Hot Tea and Coffee.  
Oysters in every style.  
Choice Cakes,  
Candies, Etc

GIVE US A CALL.

**OFFICE RESTAURANT**

Opposite the Masonic Temple, Richmond St.

**CHOICE WINES,  
LIQUORS, ALES,  
CIGARS, ETC.**

Restaurant on the European Plan.  
OYSTERS IN EVERY STYLE.

**D. SARE,**  
Proprietor.

Look out for the "London Free Press" on all early morning Trains.

## VASELINE.

EVERYBODY knows the great value of this remedy in the household, but everybody does not know that the imitations of it, which some second class druggists dishonorably palm off on their customers, have little or no value. What should be understood by the public is, that it is not a mere question of comparative value between "Vaseline" and the imitations, but that the imitations do not effect the wonderful healing results of the world renowned "Vaseline," and that they are not the same thing nor made in the same way. Besides this, many of the imitations are harmful, irritant and not safe to use, while true Vaseline is perfectly harmless.

Perfect safety therefore lies in buying only original packages put up by and marked with our name.

CHESEBROUGH M'FG CO.

## FLOWERS

—FOR—

## OPERA OR BALL

—AT—

## GAMMAGE'S

Duffield Block, 213 Dundas Street.

FRESH EVERY DAY.

TELEPHONE 807.

## NEXT ATTRACTION,

SATURDAY MATINEE AND NIGHT.

WEDDED - BEYOND - DIVORCE.

Minstrelsy and Farce-Comedy in

## GEO. THATCHER'S

MINSTREL FARCE COMEDY CREATION

## TUXEDO

WRITTEN BY MR. ED. MARBLE.

Presented by the Grand Dual Organization composed of the combined forces of

GEORGE

THATCHER'S  
MINSTRELS.

GEORGE THATCHER.  
HUGHIE DOUGHERTY.  
JOHN A. COLMAN.  
BERT SHEPARD  
ED. MARBLE.  
R. J. JOSE.  
RAYMON MOORE.  
H. W. FRELLMAN.  
THOS. LEWIS.  
GEO. W. LEWIS.  
JAY QUIGLEY.  
JOHN DALY.  
G. W. DEELEN.  
C. B. WHEELER.

AND

Including  
MISS MAMIE GILROY.  
" IDA FITZTUGH.  
" GRACE HAMILTON.  
" BLANCHIE HAYDEN.  
" SENORITA DOLORES.  
" LAURA ARMSTRONG.  
MR. DOX CRUGER.  
" CHARLES RAYMON.  
" ED. WHITE.  
" AL. FOSTER.  
" E. N. HEALD.  
" ED. ROYCE.

RICH AND  
HARRIS'  
COMEDY  
COMPANY.

REWRITTEN AND REVISED FOR SEASON 189-93.

## LADIES' TAILOR-MADE COSTUMES & RIDING HABITS.

# Burns

154 Dundas Street.

PROGRAMME CONTINUED.

## Synopsis.

ACT I.—King Duncan's visit to Inverness.  
ACT II.—The Murder of Duncan.  
ACT III.—Lady Macbeth's Banquet.  
ACT IV.—Sleep Walking "Remorse."  
ACT V.—Death of the Tyrant. "Long live Malcolm, King of Scotland."

N.B.—There being but one minute wait between the fourth and fifth acts, all are requested to remain in their seats.

C. L. Graves, Stage Manager for Janauschek.  
Carriages can be ordered at 10.30.

During the evening, incidental to the stage performance, the ORCHESTRA of the Grand Opera House, under the direction of MR. FRED L. EVANS, will perform the following selections:

Overture—"Festival".....Leutner  
Clarinet Solo—"Traviata-Cavatina".....Verdi  
Polonaise—"Wedding".....Leutner  
Selection—"Tolantne".....Sullivan  
March—"Kameka".....Faust

The above programme subject to transposition.

Opera Glasses can be rented by applying to us here or at Box Office.

## THE PIANO

Used in the Orchestra is from the

## GERHARD HEINTZMAN Co.

69 and 75 Sherbourne St., Toronto.

LONDON WAREROOM: 226 DUNDAS STREET.

## W. T. STRONG,

Dispensing \*

\* \* Chemist

184 Dundas Street,

LONDON, . . . ONTARIO.

## Parisian Steam Laundry

73 and 75 DUNDAS ST.



Laundry work transferred free of charge to and from Toronto, Hamilton, Brantford, Woodstock, Stratford, Guelph, London, St. Thomas, Chatham, Windsor and Sarnia.

J. K. SPRY, Manager.

MONDAY, MARCH 6th.

## Rosina Vokes

ROSINA VOKES! How many thousands have been delighted and charmed by the music of her voice, and amused by the artlessness of her manner. If it were only possible to know, no doubt, that the world has been made brighter by her living in it, for she has brought sunshine into the hearts of mankind, and taught them that, after all is said and done, "life is what you make it." Hers is not the art of the photographer nor scene painter, but the water-color artist, full of light and grace; and for old time's sake every lover of the best in art will pay the perpetual fountain of youth, so that she may be permitted to show the coming generation, still in pantalons and pinafores, what pure, high-toned comedy is.

There is in the name of this jolly little English woman something to make an old heart young; something to revive memories that have long been covered with the dust of time.

For her engagement here Miss Vokes will present one of the most charming triple bills in her very extensive repertoire. The performance will begin with "A Game of Cards," (first time here) an old comedy in one act, adapted from the French, in which Felix Morris is said to give further evidence of his remarkable skill in portraying eccentric character. This will be followed by an exquisite comedieta by Mrs. Charles Dormans, of New York, entitled "The Circus Rider," (first time here) while the concluding number on the programme will be "A Double Lesson," a comedieta in one act, by B. C. Stephenson, in which Miss Vokes and Mr. Morris are seen in their happiest roles. She as Miss St. Almond, a burlesque actress, and he as Primmer, an old Scotch butler.



