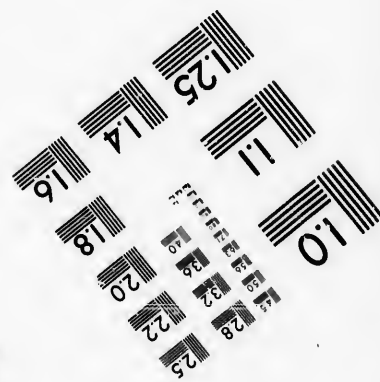
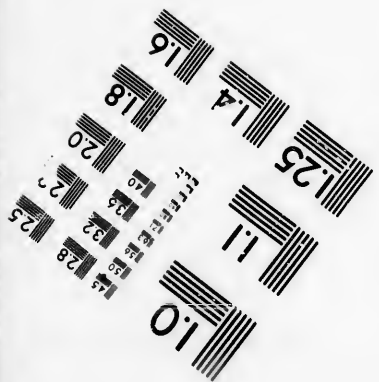
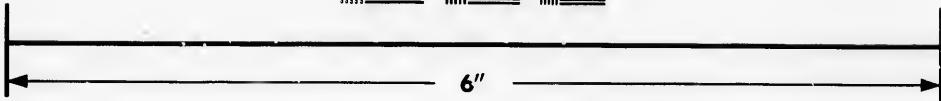
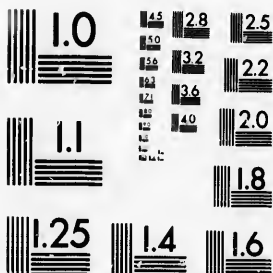


**IMAGE EVALUATION  
TEST TARGET (MT-3)**



**Photographic  
Sciences  
Corporation**

23 WEST MAIN STREET  
WEBSTER, N.Y. 14580  
(716) 872-4503

**CIHM/ICMH  
Microfiche  
Series.**

**CIHM/ICMH  
Collection de  
microfiches.**



**Canadian Institute for Historical Microreproductions / Institut canadien de microreproductions historiques**

**© 1986**

Technical and Bibliographic Notes/Notes techniques et bibliographiques

The Institute has attempted to obtain the best original copy available for filming. Features of this copy which may be bibliographically unique, which may alter any of the images in the reproduction, or which may significantly change the usual method of filming, are checked below.

L'Institut a microfilmé le meilleur exemplaire qu'il lui a été possible de se procurer. Les détails de cet exemplaire qui sont peut-être uniques du point de vue bibliographique, qui peuvent modifier une image reproduite, ou qui peuvent exiger une modification dans la méthode normale de filmage sont indiqués ci-dessous.

- Coloured covers/  
Couverture de couleur
- Covers damaged/  
Couverture endommagée
- Covers restored and/or laminated/  
Couverture restaurée et/ou pelliculée
- Cover title missing/  
Le titre de couverture manque
- Coloured maps/  
Cartes géographiques en couleur
- Coloured ink (i.e. other than blue or black)/  
Encre de couleur (i.e. autre que bleue ou noire)
- Coloured plates and/or illustrations/  
Planches et/ou illustrations en couleur
- Bound with other material/  
Relié avec d'autres documents
- Tight binding may cause shadows or distortion along interior margin/  
La reliure serrée peut causer de l'ombre ou de la distorsion le long de la marge intérieure
- Blank leaves added during restoration may appear within the text. Whenever possible, these have been omitted from filming/  
Il se peut que certaines pages blanches ajoutées lors d'une restauration apparaissent dans le texte, mais, lorsque cela était possible, ces pages n'ont pas été filmées.
- Additional comments:/  
Commentaires supplémentaires:

- Coloured pages/  
Pages de couleur
- Pages damaged/  
Pages endommagées
- Pages restored and/or laminated/  
Pages restaurées et/ou pelliculées
- Pages discoloured, stained or foxed/  
Pages décolorées, tachetées ou piquées
- Pages detached/  
Pages détachées
- Showthrough/  
Transparence
- Quality of print varies/  
Qualité inégale de l'impression
- Includes supplementary material/  
Comprend du matériel supplémentaire
- Only edition available/  
Seule édition disponible
- Pages wholly or partially obscured by errata slips, tissues, etc., have been refilmed to ensure the best possible image/  
Les pages totalement ou partiellement obscurcies par un feuillet d'errata, une pelure, etc., ont été filmées à nouveau de façon à obtenir la meilleure image possible.

This item is filmed at the reduction ratio checked below/  
Ce document est filmé au taux de réduction indiqué ci-dessous.

10X	12X	14X	16X	18X	20X	22X	24X	26X	28X	30X	32X
			✓								

The copy filmed here has been reproduced thanks to the generosity of:

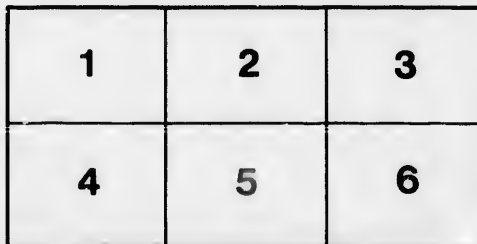
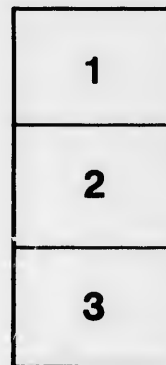
Library of the Public  
Archives of Canada

The images appearing here are the best quality possible considering the condition and legibility of the original copy and in keeping with the filming contract specifications.

Original copies in printed paper covers are filmed beginning with the front cover and ending on the last page with a printed or illustrated impression, or the back cover when appropriate. All other original copies are filmed beginning on the first page with a printed or illustrated impression, and ending on the last page with a printed or illustrated impression.

The last recorded frame on each microfiche shall contain the symbol  $\rightarrow$  (meaning "CONTINUED"), or the symbol  $\nabla$  (meaning "END"), whichever applies.

Maps, plates, charts, etc., may be filmed at different reduction ratios. Those too large to be entirely included in one exposure are filmed beginning in the upper left hand corner, left to right and top to bottom, as many frames as required. The following diagrams illustrate the method:



L'exemplaire filmé fut reproduit grâce à la générosité de:

La bibliothèque des Archives  
publiques du Canada

Les images suivantes ont été reproduites avec le plus grand soin, compte tenu de la condition et de la netteté de l'exemplaire filmé, et en conformité avec les conditions du contrat de filmage.

Les exemplaires originaux dont la couverture en papier est imprimée sont filmés en commençant par le premier plat et en terminant soit par la dernière page qui comporte une empreinte d'impression ou d'illustration, soit par le second plat, selon le cas. Tous les autres exemplaires originaux sont filmés en commençant par la première page qui comporte une empreinte d'impression ou d'illustration et en terminant par la dernière page qui comporte une telle empreinte.

Un des symboles suivants apparaîtra sur la dernière image de chaque microfiche, selon le cas: le symbole  $\rightarrow$  signifie "A SUIVRE", le symbole  $\nabla$  signifie "FIN".

Les cartes, planches, tableaux, etc., peuvent être filmés à des taux de réduction différents. Lorsque le document est trop grand pour être reproduit en un seul cliché, il est filmé à partir de l'angle supérieur gauche, de gauche à droite, et de haut en bas, en prenant le nombre d'images nécessaire. Les diagrammes suivants illustrent la méthode.

OSRAM  
LAMPS



FACTORY PRODUCTS  
LIMITED

TORONTO

ONTARIO



F

E

L

A

B

H

S

—  
S

## “OSRAM” LAMPS.

**EFFICIENCY.**—Approximately one watt per candle power, equal to a saving of **70%** over carbon filament lamps.

**LIFE.**—Not having control of the regulation of the circuits on which the lamps are to be used, nor the treatment or handling which they receive, we do not guarantee the life, but under normal conditions, the average life of an “Osram” lamp is fully 1500-2000 hours.

**ADAPTABILITY.** — “Osram” Lamps burn equally well on continuous or alternating current circuits, and at any angle, except 100 Watt and upwards, which should be placed vertically downwards.

**BRILLIANCY.**—“Osram” Lamps maintain their initial c.p. longer than any other illuminant; the decrease in light after 1000 hours' burning being less than 5%.

**HEAT.**—“Osram” Lamps give out less heat than any other form of illuminant, thus rendering them the safest lamp to burn under all conditions.

**SUITABLE** for burning on any circuit supplying current for lighting purposes in the Dominion.

SEE THE NAME "OSRAM" ON EVERY BULB.

---

## "OSRAM" LAMPS.

17, 25, 32 and 55 Watts.  
Approx. 16, 25, 32 and 50 H.C.P. 100 135 Volts.  
FOR BURNING IN ANY POSITION.



### DESCRIPTION

Volts	Watts	Approx. C.P.	
		Hefner.	British
100-135	17	16	14.5
	25	25	22.5
	32	32	28.5
	55	50	45.0

Series Lamps, 5% extra. Frosting, 5% extra.

---

FACTORY PRODUCTS, LIMITED, TORONTO, ONT.



FACTORY PRODUCTS LIMITED, TORONTO, ONT.

---

## "OSRAM" LAMPS.

32, 40 and 55 Watts.  
Approx. 25, 32 and 50 H.C.P. 200-260 Volts.

Supplied in Pear Shaped Bulbs.



FOR BURNING IN ANY POSITION.

An extra charge for Spherical Bulbs.

---

SEE THE NAME "OSRAM" ON EVERY BULB.

BULB.

Volts.

H.P.  
British

4.5  
2.5  
8.5  
5.0

extra.

ONT.

SEE THE NAME "OSRAM" ON EVERY BULB.

---

## "OSRAM" LAMPS.

Volts	Watts	Approx. C.P.	
		Hefner.	British
200-260	{ 32	25	22.5
	{ 40	32	28.5
	{ 55	50	45.0
25	{ 10	10	9.0
	{ 16	16	14.5
	{ 25	25	22.5
50-55	{ 13	12	10.5
	{ 17	16	14.5
	{ 28	25	22.5
	{ 35	32	28.5
	{ 55	50	45.0
60-80	{ 17	16	14.5
	{ 28	25	22.5
	{ 35	32	28.5

Series Lamps, 5% extra.

Frosting, 5% extra.

FOR BURNING IN ANY POSITION.

The above Lamps supplied in Pear Shaped Bulbs.

An extra charge for Spherical Bulbs.

---

FACTORY PRODUCTS LIMITED, TORONTO, ONT.

ULB.  

---

FACTORY PRODUCTS LIMITED, TORONTO, ONT.

**"OSRAM" LAMPS.**



100 to 1000 Hefner Candle Power

---

SEE THE NAME "OSRAM" ON EVERY BULB.

ONT.

SEE THE NAME "OSRAM" ON EVERY BULB.

---

## "OSRAM" LAMPS

100 to 260 Volts.

For Burning in Downward Vertical Position.

Volts	Watts	Approx. C.P.	
		Hefner	British
100-260	100	100	90
	200	200	180
	300	300	270
	400	400	360
	600	600	540
	1000	1000	900

300 and 400 Watt size supplied with Edison base.  
600 and 1000 Watt size with special base.

## "OSRAM" CANDLE LAMPS.

25-135 Volts.

For Burning in Any Position.

Volts	Watts	Approx. C.P.	
		Hefner	British
100-135	17	16	14.5
66-80	17	16	14.5
50-55	10	10	9
	16	16	14.5
33	10	10	9
	16	16	14.5
25	10	10	9
	16	16	14.5

Series Burning, 5% extra.

Frosting, 5% extra.

---

FACTORY PRODUCTS LIMITED, TORONTO, ONT.

# CARBON LAMPS.

---

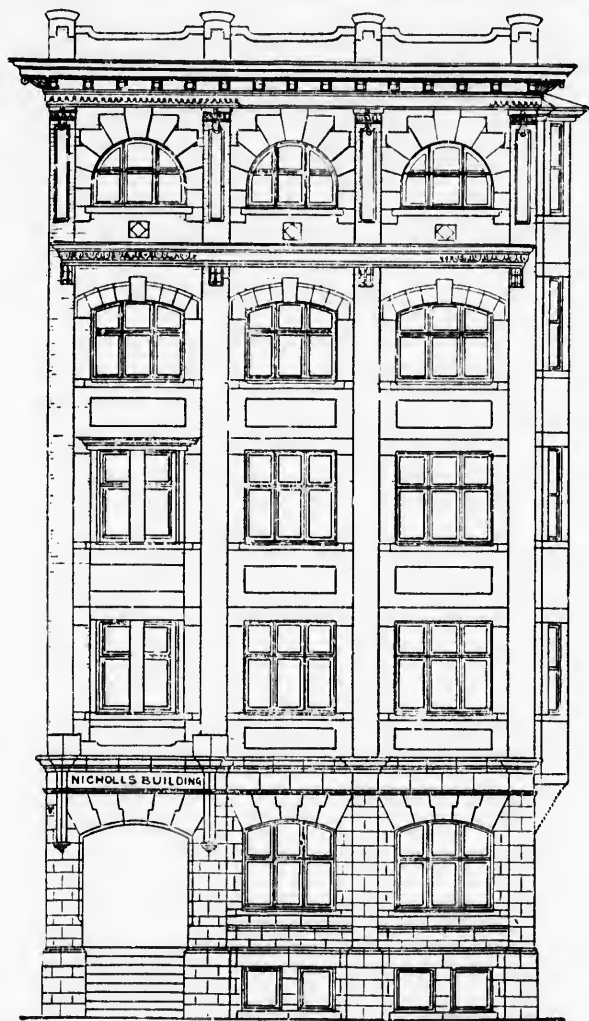
WE are sole Canadian agents  
for the well-known "Rob-  
ertson" and "Magnet" Incan-  
descent Lamps, which can be  
supplied in standard candle  
powers for any voltage.

Special prices for yearly  
contracts.

---

SEE THE NAME "OSRAM" ON EVERY BULB.

NEW HOME  
Factory Products Limited



NICHOLLS BUILDING  
218 KING STREET WEST  
TORONTO

ed

**Canadian Representatives**

**FOR**

**THE GENERAL ELECTRIC CO.,  
LONDON, ENG.**

**ELECTRICAL APPARATUS AND SUPPLIES**

**PIRELLI LIMITED, MILAN, ITALY**

**WIRE AND CABLES**

**STOTHERT & PITT, BATH, ENG.**

**TRAVELLING CRANES AND HOISTING  
MACHINERY**

---

**SHERADIZING**

**OXY-ACETYLENE  
WELDING AND CUTTING APPARATUS**

**MECHANICAL RUBBER GOODS**

**AIR HOISTS**

**FUEL OIL AND GAS BURNING APPLIANCES**

**VERTICAL BOILERS**

**MACHINE SHOP EQUIPMENT**





