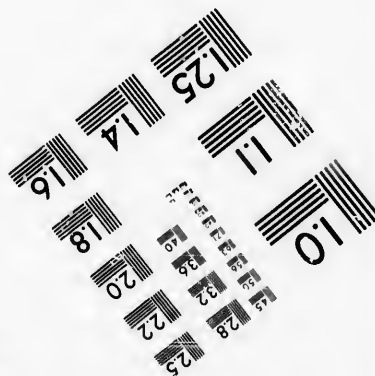
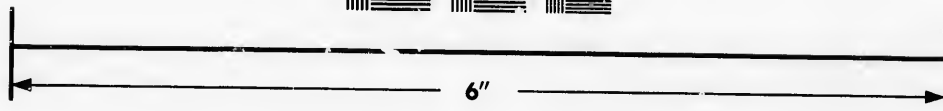
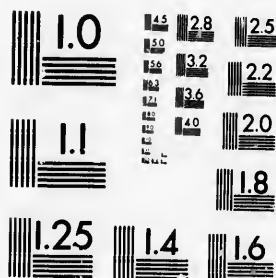


IMAGE EVALUATION TEST TARGET (MT-3)



Photographic
Sciences
Corporation

23 WEST MAIN STREET
WEBSTER, N.Y. 14580
(716) 872-4503

**CIHM/ICMH
Microfiche
Series.**

**CIHM/ICMH
Collection de
microfiches.**



Canadian Institute for Historical Microreproductions / Institut canadien de microreproductions historiques

© 1986

Technical and Bibliographic Notes/Notes techniques et bibliographiques

The Institute has attempted to obtain the best original copy available for filming. Features of this copy which may be bibliographically unique, which may alter any of the images in the reproduction, or which may significantly change the usual method of filming, are checked below.

L'Institut a microfilmé le meilleur exemplaire qu'il lui a été possible de se procurer. Les détails de cet exemplaire qui sont peut-être uniques du point de vue bibliographique, qui peuvent modifier une image reproduite, ou qui peuvent exiger une modification dans la méthode normale de filmage sont indiqués ci-dessous.

- ☐ Coloured covers/
Couverture de couleur
- ☐ Covers damaged/
Couverture endommagée
- ☐ Covers restored and/or laminated/
Couverture restaurée et/ou pelliculée
- ☐ Cover title missing/
Le titre de couverture manque
- ☐ Coloured maps/
Cartes géographiques en couleur
- ☐ Coloured ink (i.e. other than blue or black)/
Encre de couleur (i.e. autre que bleue ou noire)
- ☐ Coloured plates and/or illustrations/
Planches et/ou illustrations en couleur
- ☐ Bound with other material/
Relié avec d'autres documents
- ☐ Tight binding may cause shadows or distortion
along interior margin/
La reliure serrée peut causer de l'ombre ou de la
distorsion le long de la marge intérieure
- ☐ Blank leaves added during restoration may
appear within the text. Whenever possible, these
have been omitted from filming/
Il se peut que certaines pages blanches ajoutées
lors d'une restauration apparaissent dans le texte,
mais, lorsque cela était possible, ces pages n'ont
pas été filmées.
- ☒ Additional comments: / [Printed ephemera] [4] p.
Commentaires supplémentaires:

- ☐ Coloured pages/
Pages de couleur
- ☒ Pages damaged/
Pages endommagées
- ☐ Pages restored and/or laminated/
Pages restaurées et/ou pelliculées
- ☒ Pages discoloured, stained or foxed/
Pages décolorées, tachetées ou piquées
- ☐ Pages detached/
Pages détachées
- ☒ Showthrough/
Transparence
- ☐ Quality of print varies/
Qualité inégale de l'impression
- ☐ Includes supplementary material/
Comprend du matériel supplémentaire
- ☐ Only edition available/
Seule édition disponible
- ☐ Pages wholly or partially obscured by errata
slips, tissues, etc., have been refilmed to
ensure the best possible image/
Les pages totalement ou partiellement
obscurcies par un feuillet d'errata, une pelure,
etc., ont été filmées à nouveau de façon à
obtenir la meilleure image possible.

This item is filmed at the reduction ratio checked below/
Ce document est filmé au taux de réduction indiqué ci-dessous.

10X	14X	18X	22X	26X	30X
<input type="checkbox"/>	<input type="checkbox"/>	<input type="checkbox"/>	<input type="checkbox"/>	<input checked="" type="checkbox"/>	<input type="checkbox"/>
12X	16X	20X	24X	28X	32X

The copy filmed here has been reproduced thanks to the generosity of:

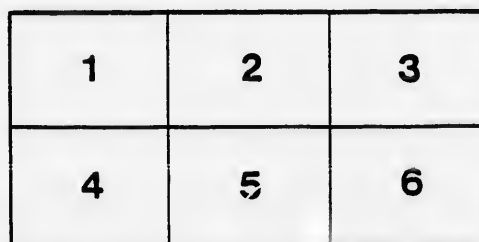
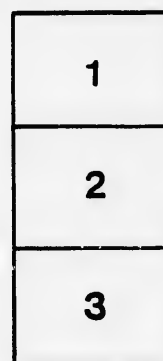
D.B. Weldon Library
University of Western Ontario
(Regional History Room)

The images appearing here are the best quality possible considering the condition and legibility of the original copy and in keeping with the filming contract specifications.

Original copies in printed paper covers are filmed beginning with the front cover and ending on the last page with a printed or illustrated impression, or the back cover when appropriate. All other original copies are filmed beginning on the first page with a printed or illustrated impression, and ending on the last page with a printed or illustrated impression.

The last recorded frame on each microfilm shall contain the symbol ➡ (meaning "CONTINUED"), or the symbol ▼ (meaning "END"), whichever applies.

Maps, plates, charts, etc., may be filmed at different reduction ratios. Those too large to be entirely included in one exposure are filmed beginning in the upper left hand corner, left to right and top to bottom, as many frames as required. The following diagram illustrates the method:



L'exemplaire filmé fut reproduit grâce à la générosité de:

D.B. Weldon Library
University of Western Ontario
(Regional History Room)

Les images suivantes ont été reproduites avec le plus grand soin, compte tenu de la condition et de la netteté de l'exemplaire filmé, et en conformité avec les conditions du contrat de filmage.

Les exemplaires originaux dont le couverture en papier est imprimée sont filmés en commençant par le premier plat et en terminant soit par la dernière page qui comporte une empreinte d'impression ou d'illustration, soit par le second plat, selon le cas. Tous les autres exemplaires originaux sont filmés en commençant par la première page qui comporte une empreinte d'impression ou d'illustration et en terminant par la dernière page qui comporte une telle empreinte.

Un des symboles suivants apparaîtra sur la dernière image de chaque microfiche, selon le cas: le symbole ➡ signifie "À SUIVRE", le symbole ▼ signifie "FIN".

Les cartes, planches, tableaux, etc., peuvent être filmés à des taux de réduction différents. Lorsque le document est trop grand pour être reproduit en un seul cliché, il est filmé à partir de l'angle supérieur gauche, de gauche à droite, et de haut en bas, en prenant le nombre d'images nécessaire. Les diagrammes suivants illustrent le méthode.

errata
to

pelure,
n à

32X

READ AND REFLECT.

NOTICE TO OUR PATRONS—If the individual members of an audience would stop to think for just an instant, they would undoubtedly appreciate the fact that the habit of rising from their seats and leaving the theatre before the curtain falls, is a most annoying one, and one that should be stopped. We therefore beg our audiences to kindly remain in their seats until the close of the performance.

Evenings—doors open at 7:30; curtain rises at 8:15 sharp. Matinees—doors open at 1:30; curtain rises at 2:30 sharp.

Plaza opens for each attraction two days in advance.



Sents can be secured by mail, telephone or telegraph. Telephone 739.

Physicians are requested to register at the Box Office, leaving seat number, as this will enable Ushers to find them if called for, without disturbing the audience.

Carriages can be ordered at the Box Office or of the Chief Usher.

Please report to the management any inattention on the part of the employees. Overcoats, packages and umbrellas checked for a small charge.

For all lost articles apply at Box Office. Opera Glasses can be rented by applying to Ushers or at Box Office.

It is strange, but there is a class of people that seem to take an intense delight in bespattering the floor with tobacco juice and in being boisterous and using profane language. These people should know at once that the courts authorize their immediate expulsion, should the management see fit to exercise its rights.

BETWEEN the Acts, and after the Opera is over go to the

OPERA + CIGAR + STORE

For Cigars, Cigarettes, Etc.
LOUIS RISK.

W. T. STRONG,

Dispensing +

Chemist

184 Dundas Street,

LONDON - - - ONTARIO.

HATS!

—LATEST—

American and English Shapes

In all Colors,

—JUST OPENED.—

Rivard

LONDON'S FASHIONABLE HATTER,

400 Richmond St., LONDON, ONT.

C. J. WHITNEY LESSEE AND MANAGER.
A. E. ROOTE REPRESENTATIVE.
FRED. L. EVANS DIRECTOR OF ORCHESTRA.
GUS. SCHABACKER STAGE MANAGER.
JAMES LAMB CHIEF USHER.

Monday, April 3rd, 1893.

+ PROGRAMME. +

Barlow

Brothers'

Mammoth

Minstrels

Under the Management of AL. L. DOLSON.

(Programme Continued on Page 3.)

—WHEN YOU REQUIRE—

First-Class Fashionable Footwear

OF THE LATEST

ENGLISH, AMERICAN AND PARISIAN STYLES,

CALL AT

145 DUNDAS STREET

(D. Regan's old stand.)

All our Overshoes, Felts and Lined Rubbers will be sold at cost, as I must make room for my Elegant Spring and Summer Goods arriving daily.

JNO. S. BROWN

TELEPHONE 881.

OUR PROGRAM.

FOR THE PEOPLE'S PERPETUAL PIC-NIC!
THE GENUINE—
Heintzman & Co., Pianos!
THE WORLD-FAMED—
Emerson Pianos!
THE UNEQUALLED—
Goderich Organs!
THE PERFECT—
White Sewing Machines!
AN ENDLESS DISPLAY OF—
Small Musical Instruments!
A MODEL ASSORTMENT OF—
Strings, Fittings, Music Books, Etc.
THE ALL-IMPORTANT—
Marriage Licenses!

These and countless other good things can be obtained at "COLWELL'S POPULAR MUSIC HOUSE," 171 Dundas Street, LONDON.

WE KEEP A FIRST-CLASS MUSIC STORE.

Our prices and Terms are the most reasonable. We deal very liberally with everybody. From distant buyers we invite orders by Mail, Telephone or Telegraph.

C. P. M. H. Leads all Competitors.
CHAS. F. COLWELL, Proprietor.

The only place in the City to get the latest

SCARFS.

Burns

—The Furnisher.

A MAN

Wants to see you Between Acts

Jerry McDonald's

Across the Road.

181 KING STREET.

Burns

* * **SAYS**
That the D. B. Sag Suit
Will lead this Fall.

AND HE IS RIGHT.

GREAT PRIZE SALE

Every Cash Customer buying One Dollar's
worth or more of

WALL PAPER,

WINDOW SHADES,

CORNICE POLES,

ARTISTS' MATERIALS,

PICTURE FRAMES,

PICTURES,

ETC., ETC., ETC.

Stands the chance of securing a Prize worth from \$1.00
to \$20.00 according to amount of purchase.

E. N. HUNT,

190 DUNDAS ST., LONDON.

NEXT ATTRACTION:

Mapleson Opera Company

WEDNESDAY, APRIL 5th, '93

Extracts from the Press.

Laura Schirmer-Mapleson. Never did a singer receive such a flattering ovation as Madame Schirmer-Mapleson was accorded, and never was it better deserved. Her voice is a pure and sweet soprano of exceeding strength and volume and quite phenomenal in its wonderful range. It is almost impossible to convey a true idea of the perfect beauty of Madame Mapleson's execution, which formed one of the most important features of her artistic singing.—*Montreal Gazette*.

Laura Schirmer-Mapleson made her first appearance after an absence of several years, during which time she has been singing in grand opera with great success in all the principal European capitals. Madame Mapleson's success was instantaneous and her singing was highly appreciated by a very large and critical audience, which applauded frequently and heartily. Her voice strongly resembles that of Gerster when she first appeared in this country. Madame Mapleson's high notes are wonderfully brilliant, while the low and medium tones are full and sympathetic. She has a beautiful face and magnificent figure.—*The New York Herald*.

Laura Schirmer-Mapleson shows the natural-born artist in her graceful demeanor and even carriage. She is undoubtedly the most beautiful woman on the American stage to-day. A wealth of light, brown hair, beautiful teeth, bright blue eyes, and a tall, shapely figure briefly describes the lady as seen from the parquet. She is as fascinating as an actress as she is as a woman. But her magnificent voice outshines both. To adequately describe her singing is almost impossible. It may, however, be truly described as resembling that of Gerster or Christine Nilsson in their young days.—*The Boston Globe*.

The Associated Press dispatch, sent on the occasion of Laura Schirmer-Mapleson's first appearance on her return from Europe says:—"Laura Schirmer-Mapleson has more than justified all the praise which she has received from European critics. She is one of the few prima donnas that have not been over-advertised. Her stage presence is superb, while her vocalization is certainly equal to anything that has been heard in this country for many years. The quality of her voice is like a flute, delightfully satisfying. Her thrills and cadenzas are simply marvelous."

Marshall's * Mammoth * Livery

IS THE LARGEST AND THE OLDEST
ESTABLISHMENT IN THE CITY.

DOES THE LEADING BUSINESS IN

Carriages, Cabs, Coupes, *
* Victorias, Busses, Etc.

Every kind of Conveyance can be had there on the
shortest notice, by Telephone No. 436.

JAS. S. MARSHALL, Proprietor.

Dundas Street, London, Ont.

For Fashionable
WELL MADE SUITS

... CALL ON ...

Burns

The Tailor,

Dundas Street.

Artistic * Floral * Design

EITHER WEDDING, PRESENTATION, DINNER TABLE, OR FUNERAL.

GO TO **DILLOWAY,**

The Leading Florist.

248 Dundas Street.

Choicest Cut Flowers Always on Hand.

TELEPHONE 587.

◀ AFTER THE PERFORMANCE ▶

—STOP AT—

Harry McKenna's,

—FOR—

Choice Havana Cigars &
* * Tobacco Sundries.

225 Dundas Street.

Always Open After Performance.

SMITH BROS.

**Plumbers,
Steam and Gas Fitters.**

ESTIMATES FURNISHED ON APPLICATION.

All Work Warranted.

Terms Moderate.

376 RICHMOND STREET.
(Opposite Masonic Temple.)

Telephone No. 538.

THE TECUMSEH,

London, Ontario.



Leading Hotel of Western Ontario.

Large Sample Rooms Free of Charge,
Baggage and Passenger Elevator.

Only one Block from the Grand Opera House.

C. W. DAVIS,
PROPRIETOR.

White · Sulphur · Springs · Baths
FAMOUS HEALTH RESORT.
The Saratoga of Canada.
IN CONNECTION WITH THE HOTEL.

Great Attraction to Visitors Seeking Health.
C. W. DAVIS, Treasurer. A. D. HOLMAN, Manager.

* THE LATEST ENGLISH *
Collars, · Cuffs · and · Shirts.
ALL SIZES ALWAYS IN STOCK.

Burns

DUNDAS STREET.

PROGRAMME CONTINUED.

MAGNIFICENT BARLOW OPERATIC FIRST PART.

Master of Ceremonies, C. Rummell.

BONES:
Geo. Snyder.

Lon Evans.....
F. Scofield.....
Will Evans.....

On the Ends.

TAMBOUR:
Fred Russell

.....Chas. Cass
.....Ben. Buckley
.....Frank Evans

GRAND ENSEMBLE.—Operatic Overture, Prof. Gee and Orchestra, with
Choral Obligato, introducing the Lightning Flash Grove
in Batonical Evolutions.

Is Marriage a Failure?.....Fred Russell
In Old Madrid.....Robt. Price
Once Again.....George Snyder

SECOND EDITION.—Introducing the Monarchs of Minstrelsy,

JAMES.—BARLOW BROTHERS.—BILLY.

CLARENCE RUMMELL presiding.

Climb the Ladder.....James Barlow
Since Mother's Dead and Gone.....Master Edward Percy
Mary "Mary".....Billy Barlow
We Were Sweethearts, Nell and I.....Howard Powers

FAMOUS BARLOW QUARTETTE.

LAUGHABLE INTERLUDE.—Scene in Front of Wanamaker's.

Mr. W.....Robert Price
Dummy No. 1.....Billy Barlow
Dummy No. 2.....James Barlow
Officer Flarety.....Fred Russell
Third Party Dummy.....John Smallboy

Programme Continued on Page 4.

**ENGLISH AND AMERICAN
SPRING *
* HATS
—AT—
BELTZ'S**

THE LEADING JEWELRY HOUSE
OF LONDON,

—FOR—

**Diamonds, Watches, ·
· · and Fine Jewelry.**

OPERA GLASSES FOR RENT.

THOS. GILLEAN,
402 Richmond Street.

Issuer of Marriage Licenses.

For Fine Finished Artistic Photos

—GO TO—

**Westlake's *
* Famous Studio**
201 Dundas Street.

Get the Latest Novelties.

Photo Etchings and Artistic Finish.

STUDIO ALL ON GROUND FLOOR.

City Views can be had.

'Phone 571.

**Wallace's Dining Hall
AND CONFECTIONERY.**

384 Richmond Street.

Lunches at all hours.

Hot Tea and Coffee.

Oysters in every style.

Choice Cakes,

Candles, Etc.

GIVE US A CALL.

OFFICE RESTAURANT

Opposite the Masonic Temple, Richmond St.

CHOICE WINES,

LIQUORS, ALES,

CIGARS, ETC.

Restaurant on the European Plan.

OYSTERS IN EVERY STYLE.

D. SARE,

Proprietor.

Look out for the "London Free Press" on all early morning Trains.

VASELINE.

EVERYBODY knows the great value of this remedy in the household, but everybody does not know that the imitations of it, which some second class druggists dishonestly palm off on their customers, have little or no value. What should be understood by the public is, that it is not a mere question of comparative value between "Vaseline" and the imitations, but that the imitations do not effect the wonderful healing results of the world renowned "Vaseline," and that they are not the same thing nor made in the same way. Besides this, many of the imitations are harmful, irritant and not safe to use, while true Vaseline is perfectly harmless.

Perfect safety therefore lies in buying only original packages put up by and marked with our name.

CHESEBROUGH M'FG CO.

FLOWERS

—FOR—

OPERA OR BALL

—AT—

GAMMAGE'S

Duffield Block, 213 Dundas Street.

FRESH EVERY DAY.

TELEPHONE 807.

NEXT ATTRACTION

Under the immediate patronage of His Excellency the Governor-General and Lieutenant-Governor.

WEDNESDAY, APRIL 6th.

Grand Performance by the

Mapleson Operatic Concert Company

Comprising a list of celebrated artists, headed by the Famous Prima Dona Soprano,

MME. LAURA SCHIRMER-MAPLESON.

A grand concert of popular operatic ballads and the entire third act of "Faust."

Prices—Circle, \$1.50; balance of lower floor, \$1; first four rows of balcony, 75c.; balance of balcony, 50c.; gallery, 25c.; box seats, \$1.50 and \$2. Plan now open.

Next attraction—James O'Neill.

LADIES' TAILOR-MADE COSTUMES & RIDING HABITS.

Burns

154 Dundas Street.

PROGRAMME CONTINUED.

OLIO OF NOVELTIES

The Great and Only SCOFIELD,

Direct from Folies Bergeres, Paris.

The Refined Character Specialty Artist,

MASTER EDWARD PERCY,

Late of the D'Oyly Carte Juvenile Opera Company, London.

"Cinderella Jackson's Masquerade"—Character Song and Dance, arranged by the Barlow Brothers, assisted by Russell, Brothers Kennard, Evans Bros.

The Latest European Novelty, "ZELLA," the Human Frog.

The Premieries of Musical Comedy.

GEORGE SNYDER & BUCKLEY-HENRY

In the Greatest Musical and Comedy Act before the public.

Frank—EVANS BROTHERS—Will, Eccentric Knockabout Comedians.

Lon—EVANS & CASS—Chas.

In their Wonderful Specialty, entitled "Mystograph of Phantom Frolos."

The Entertainment closing with the Trans-Atlantic Novelty, Brothers Kennard,

Grotesque Acrobats, Comedians, Pantomimists, in their novel specialty with the skipping rope, comical head balancing and funny dives, with the introduction of the GREAT BLONDIN DONKEY.

EXECUTIVE STAFF.

A. L. Dolson..... Proprietor and Manager
Fred Russell..... Stage Manager
John C. Knapp..... General Agent
C. S. Howard..... Advertising Agent
Prof. Ben Gee..... Band Master
Dave West..... Master of Transportation
Will G. Mack..... Master of Properties

Opera Glasses can be rented by applying to Ushers or at Box Office.

THE PIANO

Used in the Orchestra is from the

GERHARD HEINTZMAN CO.

69 and 75 Sherbourne St., Toronto.

LONDON WAREROOM: 226 DUNDAS STREET.

W. T. STRONG,

Dispensing *

* * Chemist

184 Dundas Street,

LONDON, - - - ONTARIO.

Parisian Steam Laundry

73 and 75 DUNDAS ST.



Laundry work transferred free of charge to and from Toronto, Hamilton, Brantford, Woodstock, Stratford, Guelph, London, St. Thomas, Chatham, Windsor and Sarnia.

J. K. SPRY, Manager.

