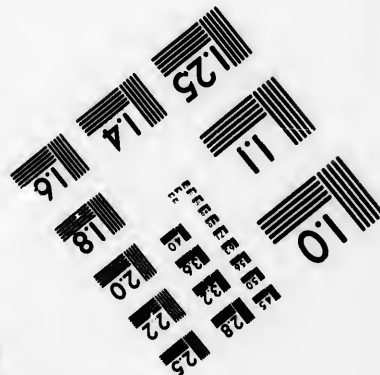
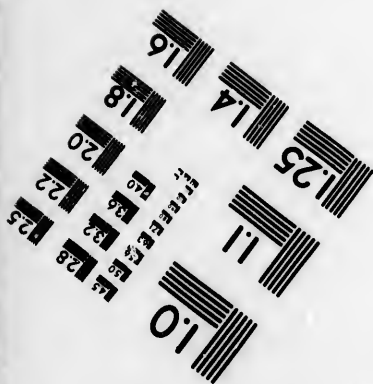
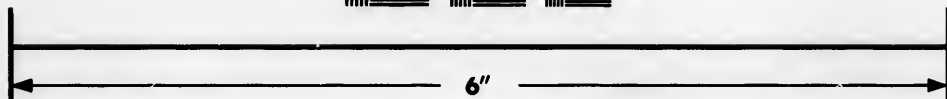
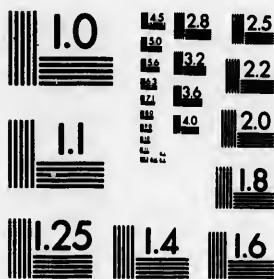


**IMAGE EVALUATION
TEST TARGET (MT-3)**



**Photographic
Sciences
Corporation**

23 WEST MAIN STREET
WEBSTER, N.Y. 14580
(716) 872-4503



**CIHM/ICMH
Microfiche
Series.**

**CIHM/ICMH
Collection de
microfiches.**



Canadian Institute for Historical Microreproductions / Institut canadien de microreproductions historiques



© 1986

Technical and Bibliographic Notes/Notes techniques et bibliographiques

The Institute has attempted to obtain the best original copy available for filming. Features of this copy which may be bibliographically unique, which may alter any of the images in the reproduction, or which may significantly change the usual method of filming, are checked below.

L'Institut a microfilmé le meilleur exemplaire qu'il lui a été possible de se procurer. Les détails de cet exemplaire qui sont peut-être uniques du point de vue bibliographique, qui peuvent modifier une image reproduite, ou qui peuvent exiger une modification dans la méthode normale de filmage sont indiqués ci-dessous.

- Coloured covers/
Couverture de couleur
- Covers damaged/
Couverture endommagée
- Covers restored and/or laminated/
Couverture restaurée et/ou pelliculée
- Cover title missing/
Le titre de couverture manque
- Coloured maps/
Cartes géographiques en couleur
- Coloured ink (i.e. other than blue or black)/
Encre de couleur (i.e. autre que bleue ou noire)
- Coloured plates and/or illustrations/
Planches et/ou illustrations en couleur
- Bound with other material/
Relié avec d'autres documents
- Tight binding may cause shadows or distortion
along interior margin/
La reliure serrée peut causer de l'ombre ou de la
distorsion le long de la marge intérieure
- Blank leaves added during restoration may
appear within the text. Whenever possible, these
have been omitted from filming/
Il se peut que certaines pages blanches ajoutées
lors d'une restauration apparaissent dans le texte,
mais, lorsque cela était possible, ces pages n'ont
pas été filmées.
- Additional comments:/
Commentaires supplémentaires:

- Coloured pages/
Pages de couleur
- Pages damaged/
Pages endommagées
- Pages restored and/or laminated/
Pages restaurées et/ou pelliculées
- Pages discoloured, stained or foxed/
Pages décolorées, tachetées ou piquées
- Pages detached/
Pages détachées
- Showthrough/
Transparence
- Quality of print varies/
Qualité inégale de l'impression
- Includes supplementary material/
Comprend du matériel supplémentaire
- Only edition available/
Seule édition disponible
- Pages wholly or partially obscured by errata
slips, tissues, etc., have been refilmed to
ensure the best possible image/
Les pages totalement ou partiellement
obscurcies par un feuillet d'errata, une pelure,
etc., ont été filmées à nouveau de façon à
obtenir la meilleure image possible.

This item is filmed at the reduction ratio checked below/
Ce document est filmé au taux de réduction indiqué ci-dessous.

10X	12X	14X	16X	18X	20X	22X	24X	26X	28X	30X	32X
			/								

The copy filmed here has been reproduced thanks to the generosity of:

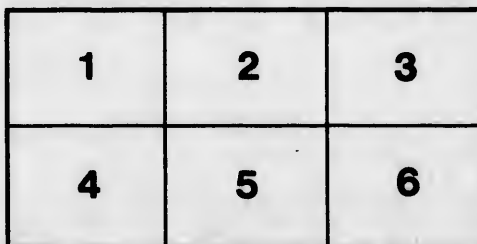
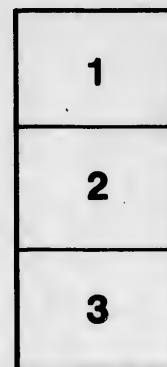
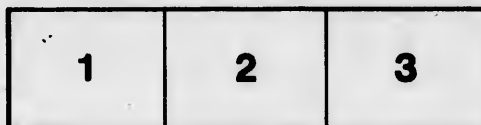
Douglas Library
Queen's University

The images appearing here are the best quality possible considering the condition and legibility of the original copy and in keeping with the filming contract specifications.

Original copies in printed paper covers are filmed beginning with the front cover and ending on the last page with a printed or illustrated impression, or the back cover when appropriate. All other original copies are filmed beginning on the first page with a printed or illustrated impression, and ending on the last page with a printed or illustrated impression.

The last recorded frame on each microfiche shall contain the symbol \rightarrow (meaning "CONTINUED"), or the symbol ∇ (meaning "END"), whichever applies.

Maps, plates, charts, etc., may be filmed at different reduction ratios. Those too large to be entirely included in one exposure are filmed beginning in the upper left hand corner, left to right and top to bottom, as many frames as required. The following diagrams illustrate the method:



L'exemplaire filmé fut reproduit grâce à la générosité de:

Douglas Library
Queen's University

Les images suivantes ont été reproduites avec le plus grand soin, compte tenu de la condition et de la netteté de l'exemplaire filmé, et en conformité avec les conditions du contrat de filmage.

Les exemplaires originaux dont la couverture en papier est imprimée sont filmés en commençant par le premier plat et en terminant soit par la dernière page qui comporte une empreinte d'impression ou d'illustration, soit par le second plat, selon le cas. Tous les autres exemplaires originaux sont filmés en commençant par la première page qui comporte une empreinte d'impression ou d'illustration et en terminant par la dernière page qui comporte une telle empreinte.

Un des symboles suivants apparaîtra sur la dernière image de chaque microfiche, selon le cas: le symbole \rightarrow signifie "A SUIVRE", le symbole ∇ signifie "FIN".

Les cartes, planches, tableaux, etc., peuvent être filmés à des taux de réduction différents. Lorsque le document est trop grand pour être reproduit en un seul cliché, il est filmé à partir de l'angle supérieur gauche, de gauche à droite, et de haut en bas, en prenant le nombre d'images nécessaire. Les diagrammes suivants illustrent la méthode.

errata
to
e pelure,
on à

HANDBOOK
OF
CANADIAN
Excursion Tours

VIA
GRAND TRUNK RAILWAY

AND
Canadian Navigation Co.

RATES OF FARE FOR SEASON OF 1879.

Tickets and Information may be obtained at

No. 280 Washington Street.

W. C. TALLMAN, New England Pass. Agt.

H. G. FOULKES, Ticket Agent.

B. J. QUACK, Trav. Agent.

D. E. W. STONE, Adv. Agent.

J. HICKSON, Gen. Manager G. T. Ry.

Montreal

H. J. SHARPEANT, Trade Manager G. T. Ry.

Montreal

W. H. KELLY, Sec. and Agent Canadian Nav. Co.

Montreal

W. WALKWORTH, Gen. Pass. Agent G. T. Ry., Montreal



PLAND.
March

STV

10.25

10.25



ILLINOIS



1100 1100 1100

1100 1100

AL TICKET OFFICES IN NEW ENGLAND.
AND WEST.
 DIRECT ROUTE TO ALL PORTS

WALKER



THE SHORTEST AND MOST DIRECT

EAST

TICKETS FOR SALE AT ALL PRINCIPAL

TON

Tourist

Agents
 insert the
 of the pro
 Also,
 St. Johns
 those cou
 The C
 Kingston,
 and Queb
 either by
 or by the
 Ticke
 Montreal
 The T
 visit the A
 Agent
 Grand Tr
 of Steam
 before. T
 and has b
 Pullman
 A Pul
 Train-fro
 bling pas
 No d
 special
 Part
 routes fr
 iston, an
 lilton to T
 Mail Lin
 Islands,
 Ogdensbu

LIST OF
EXCURSION ROUTES
AND
RATES OF FARE
FOR
Tourists' Tickets for the Season of 1879.

TICKETS GOOD UNTIL NOVEMBER 1st.

Agents will please note that in issuing forms marked * they must insert the paster or slip of coupons of the number designated, in place of the present coupons reading via stage to or from Profile House.

Also, that in issuing forms marked †, having coupons Montreal to St. Johns, St. Johns to W. Farnham, they must stamp or write across those coupons, "Via St. Lambert."

The Coupons between Niagara Falls and Toronto, Toronto and Kingston, Kingston and Prescott, Prescott and Montreal, and Montreal and Quebec, are valid either by boat or rail, and they are likewise good either by the Richelieu and Ontario Navigation Co.'s Line from Toronto, or by the South Shore Line from Charlotte.

Tickets include meals on Lake Ontario and the River St. Lawrence to Montreal, but between Montreal and Quebec they are for passage only.

The Tickets via Lake Champlain afford Tourists an opportunity to visit the Ausable Chasm. (See Form X No. 96.)

Agents are requested to specially inform the Passengers that the Grand Trunk Railway and Richelieu and Ontario Navigation Co.'s Line of Steamers offer better inducements to the travelling public than ever before. The Grand Trunk Railway has been relaid with Steel Rails, and has been equipped with New Locomotives and First-class Cars, and Pullman Palace Cars are run on all Express Trains.

A Pullman Palace Sleeping Car will be attached to the Evening Train from Toronto, and will run through to Kingston Wharf, thus enabling passengers to remain in the Car until the Boat arrives.

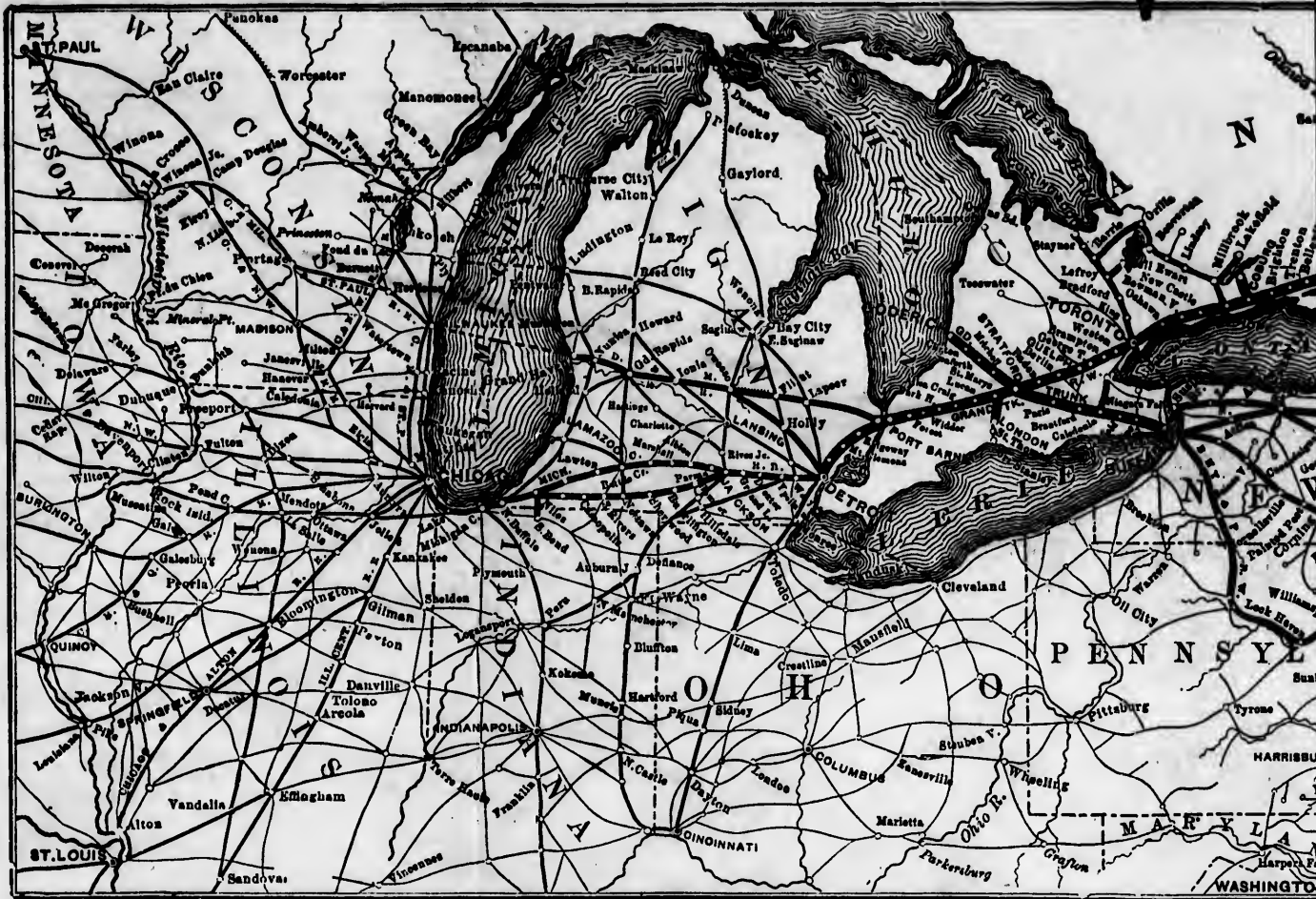
No deviation from the rates given will be allowed without special authority.

Parties holding our THROUGH EXCURSION TICKETS, have choice of routes from Niagara Falls, viz.: via New York Central Railway to Lewiston, and Steamer to Toronto, or Great Western Railway via Hamilton to Toronto, connecting there with Grand Trunk Railway, or Royal Mail Line of Steamers passing through "Lake Ontario," the "Thousand Islands," and "Rapids of the River St. Lawrence," by daylight, to Ogdensburg or Montreal.

3029135

GRAND TRUNK

RATES OF FARE can be supplied to ANY POINTS in the West,
upon application to this office.



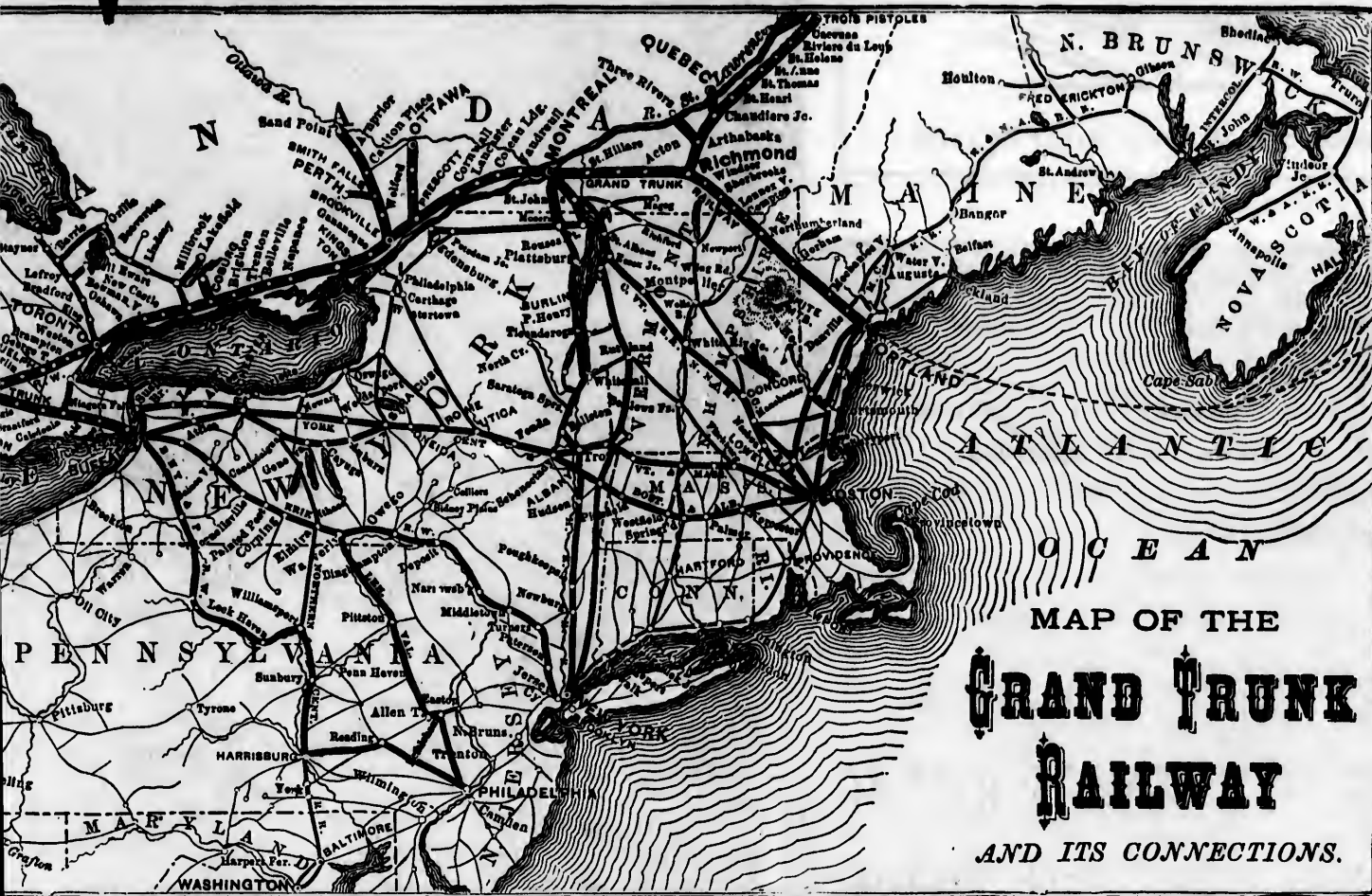
THROUGH TICKETS

AND ALL NECESSARY INFORMATION CAN BE OBTAINED AT 280 WASHINGTON STREET, BOSTON.

W. C. TALLMAN, New England Agent.

THE
TICKE

UNION RAILWAY.



THE SHORTEST AND MOST DIRECT ROUTE TO ALL POINTS

EAST AND WEST.

TICKETS FOR SALE AT ALL PRINCIPAL TICKET OFFICES IN NEW ENGLAND.

MEET, BOSTON.

RATES OF FARE

FROM

Boston to Niagara Falls

NOTICE.—The following rates of fare are given separately from Boston to Niagara Falls and from Niagara Falls to destination. To make the through rate for round trip, both rates must be added.

Via Boston & Albany and N.Y. Central Railways.....	\$11.15
" Fitchburg, Rutland, Saratoga and N.Y. Central Railways....	11.15
" Fitchburg & Hoosac Tunnel Line, and New York Central R.R.,	11.15
" Any All-Rail Route to N.Y. City, Hudson River, and N.Y.C. R'y	15.25
" " " Erie Railway.....	15.25
" Sound Lines to New York, Hudson Riv. & N.Y.C. R.R. or Erie R'y	10 75

Routes and Rates of Fare from Niagara Falls:

BOSTON. <i>Form X 11.</i> Via Montreal, Quebec, Gorham and Portland.....	\$24.00
BOSTON. <i>Form X 12.</i> Via Montreal, St. Johns, Burlington, Bellows Falls and Fitchburg.....	\$21.00
BOSTON. <i>Form X 15.</i> Via Montreal, Gorham and Portland....	\$21.00
BOSTON. <i>Form X 16.</i> Via Montreal, St. Johns, White River Junction, Concord and Nashua.....	\$21.00
BOSTON. <i>Form X 17.</i> Via Ogdensburg, St. Albans and Vermont Central Line.....	\$21.00
BOSTON. <i>Form X 29.</i> Via Montreal, Rouse's Point, Plattsburgh, Lake Champlain to Fort Ticonderoga, then by R. R. via Saratoga, Rutland, Bellows Falls, and Fitchburg.....	\$26.50
BOSTON. *1 <i>Form X 30.</i> Via Montreal, Quebec Sherbrooke, Newport, Wells River, Bethlehem, Profile House, Bethlehem, Fabyan House, Crawford House and Base of Mountain, Tip Top House by Mt. Washington R.R., Stage to Glen House and Gorham, thence via Portland	\$41.75
BOSTON. <i>Form X 34.</i> Via Montreal, Rouse's Point, Plattsburgh, Lake Champlain, Lake George, Saratoga, Albany, People's Line of Steamers to New York, and Sound Steamers to Boston.....	\$29.00

Routes and Rates of Fare from Niagara Falls. 3

BOSTON.

*1 *Form X 35.* Via Montreal, St. Johns, White River Junction, Wells River, Bethlehem, Profile House, Bethlehem, Fabyan House, Crawford House and back to Fabyans, thence via Concord, Nashua, and Lowell..... **\$30.75**

BOSTON.

Form X 38. Via Montreal, Rouse's Point, Plattsburgh, Lake Champlain, Burlington, Bellows Falls and Fitchburg..... **\$29.00**

BOSTON.

Form X 39. Via Ogdensburg, Mooer's Junction, Plattsburgh, Lake Champlain, Burlington, Bellows Falls and Fitchburg **\$21.00**

BOSTON.

Form X 136. Via Montreal, Sherbrooke, White River Junction, Concord and Nashua..... **\$21.75**

BOSTON.

Form X 137. Via Montreal, Quebec, Sherbrooke, White River Junction, Concord and Nashua..... **\$24.75**

BOSTON.

Form X 142. Via Montreal, Groveton, Concord and Nashua..... **\$23.25**

BOSTON.

Form X 145. Via Montreal, Quebec, Groveton, Concord and Nashua..... **\$26.25**

BOSTON.

*2 *Form X 147.* Via Montreal, Groveton, Fabyan House, Bethlehem, Profile House, Bethlehem, thence via Concord and Nashua..... **\$29.75**

BOSTON.

*2 *Form X 154.* Via Montreal, Gorham, Stages to Glen House and Summit, Summit to Base by Mt. Washington R.R., Base to Fabyan House, Bethlehem, Profile House, Bethlehem, thence via Concord and Nashua..... **\$39.50**

BOSTON.

Form X 182. Via Montreal, Rouse's Point, Plattsburgh, Lake Champlain to Burlington, Rail to Montpelier, Wells River, Concord, Nashua, and Lowell..... **\$26.00**

BOSTON.

† *Form X 184.* Via Montreal, St. Lambert, West Farnham, Newport, Wells River, Concord, Nashua and Lowell **\$21.00**

BOSTON.

*1 *Form 2572.* Via Montreal, St. Johns, Montpelier, Wells River, Bethlehem, Profile House, Bethlehem, Fabyan's, Crawford House, and back to Fabyan's, thence via Concord, Nashua and Lowell..... **\$31.25**

BOSTON.

Form 2674. Via Montreal, Quebec, River du Loup, Intercolonial Railway to Halifax, St. John, Steamer to Portland, and Rail to Boston..... **\$35.50**

ms

given
Niag-
te for

\$11.15
11.15
11.15
15.25
15.25
10 75

ms.

\$24.00

\$21.00

\$21.00

\$21.00

\$21.00

\$26.50

\$41.75

\$29.00

Routes and Rates of Fare from Niagara Falls.

BOSTON.

Form 2675. Via Montreal, Quebec, River du Loup, Intercolonial Railway to Point du Chene, Steamer to Summerside, P. E. I., Rail to Charlottetown, Steamer to Picton, Rail to Halifax and St. John, Steamer to Portland, and Rail to Boston..... **\$39.50**

BOSTON.

† *Form 2726.* Via Montreal, St. Lambert, W. Farnham, *4 Newport, Wells River, Bethlehem, Profile House, Plymouth, Concord, Nashua and Lowell..... **\$26.50**

BOSTON.

† *Form 2727.* Via Montreal, St. Lambert, W. Farnham, *4 Newport, Wells River, Bethlehem, Profile House, Fabyan's, Summit of Mt. Washington, Glen House, Gorham and Portland..... **\$37.75**

BOSTON.

† *Form 2728.* Via Montreal, St. Lambert, W. Farnham, Newport, Wells River, Fabyan's, Crawford House, No. Conway, and via Eastern Railroad..... **\$25.75**

BOSTON.

Form 2910. Via Montreal, St. Johns, St. Albans, Burlington, Lake Champlain, Lake George, Caldwell, Glens' Falls, Saratoga, Albany, Steamer to New York, and Sound Steamer to Boston..... **\$29.00**

BOSTON.

Form 2914. Via Montreal, Quebec, Sherbrooke, Newport, Wells River, Concord, Nashua and Lowell..... **\$24.75**

BOSTON.

Form 2961. Via Montreal, Groveton, Fabyan's, Bethlehem, Profile House, Stage to Plymouth, thence via Concord, Nashua and Lowell..... **\$29.00**

BOSTON.

Form 2962. Via Montreal, Gorham, Stages to Glen House and Summit Mt. Washington, Summit to Base by Mt. Washington R.R., Fabyan's, Bethlehem, Profile House, Stage to Plymouth, thence via Concord, Nashua and Lowell..... **\$39.00**

CRAWFORD HOUSE.

Form X 49. Via Montreal, St. Johns, White River Junction, Wells River and Fabyan House..... **\$20.25**

CRAWFORD HOUSE.

Form X 50. Via Ogdensburg, St. Albans, White River Junction, Wells River and Fabyan House..... **\$20.25**

CRAWFORD HOUSE.

Form X 100. Via Montreal, Gorham, Stages to Glen House and Tip Top House, Mt. Washington R.R. to Base of Mountain, Fabyan's and Crawford House.... **\$29.25**

CRAWFORD HOUSE.

Form X 101. Via Montreal, Quebec, Gorham, Stages to Glen House and Tip Top House, Mount Washington R.R. to Base of Mountain, Fabyan's and Crawford House..... **\$32.25**

Routes and Rates of Fare from Niagara Falls. 5

CRAWFORD HOUSE.

Form 2573. Via Montreal, St. Johns, Montpeller, Wells River and Fabyan House..... **\$20.75**

CRAWFORD HOUSE.

† *Form 2574 or 2736.* Via Montreal, St. Lambert, West Farnham, Newport, Wells River and Fabyan House... **\$20.00**

FABYAN'S.

Form 2911. Via Montreal, St. Johns, St. Albans, Montpeller and Wells River..... **\$20.00**

FABYAN'S.

*1 *Form 2912.* Via Montreal, St. Johns, St. Albans, Montpeller, Wells River, Bethlehem, Profile House and Bethlehem **\$24.00**

GORHAM.

Form X 9. Via Montreal, Quebec and Grand Trunk Railway..... **\$20.50**

GORHAM.

Form X 13. Via Montreal and Grand Trunk Railway direct..... **\$17.50**

GORHAM.

† *Form 2734.* Via Montreal, St. Lambert, W. Farnham, Newport, Wells River, Fabyan's, Crawford House, No. Conway, Glen House **\$24.75**

GORHAM.

† *Form 2735.* Via Montreal, St. Lambert, W. Farnham, Newport, Wells River, Fabyan's, Summit Mt. Washington, Glen House **\$27.50**

KINGSTON.

Form X 2. Via Rail or Steamer..... **\$7.00**

LANCASTER, N.H.

Form X 98. Via Montreal, Quebec and Groveton..... **\$19.00**

LANCASTER, N.H.

Form 2904. Via Montreal, St. Johns, St. Albans, Montpeller, Wells River and Littleton..... **\$19.00**

MONTREAL.

Form X 6. Via Rail or Steamer..... **\$12.00**

NEW YORK.

Form X 19. Via Montreal, Rouse's Point, Plattsburg, Lake Champlain, Lake George, Saratoga, Troy and N. Y. C. & Hudson River R.R. **\$27.00**

NEW YORK.

Form X 20. Via Montreal, Rouse's Point, Plattsburg, Lake Champlain, Lake George, Saratoga, Albany, and People's Line of Steamers **\$26.00**

NEW YORK.

Form X 21. Via Montreal, Rouse's Point, Plattsburg, Lake Champlain, Saratoga, Troy and N. Y. C. and Hudson River R.R..... **\$24.00**

\$39.50

\$26.50

\$37.75

\$25.75

\$29.00

\$24.75

\$29.00

\$39.00

\$20.25

\$20.25

\$29.25

\$32.25

6 Routes and Rates of Fare from Niagara Falls.

NEW YORK.

Form X 22. Via Montreal, Rouse's Point, Plattsburg, Lake Champlain, Saratoga, Albany, and People's Line of Steamers..... **\$23.00**

NEW YORK.

Form X 24. Via Montreal, Gorham, Portland and Boston, Rail and Sound Steamers..... **\$24.00**

NEW YORK.

Form X 25. Via Montreal, Quebec, Gorham, Portland and Boston, Rail and Sound Steamers **\$27.00**

NEW YORK.

Form X 26. Via Montreal, Rouse's Point, Plattsburg, Lake Champlain, Lake George, Saratoga, Albany, and Day Line Steamers..... **\$26.00**

NEW YORK.

Form X 27. Via Montreal, Rouse's Point, Plattsburg, Lake Champlain, Saratoga, Albany, and Day Line Steamers..... **\$23.00**

NEW YORK.

*1 *Form X 31.* Via Montreal, Quebec, Sherbrooke, Newport, Wells River, Bethlehem, Profile House, Bethlehem, Fabyan House, Crawford House and Base of Mountain, Tip-Top House by Mt. Washington R.R., Stages to Glen House and Gorham, Rail to Portland, Boston, thence via Rail and Sound Steamer..... **\$45.00**

NEW YORK.

*2 *Form X 36.* Via Montreal, Quebec, Gorham, Stage to Glen House and Tip Top House, Mt. Washington R.R. to Base of Mountain, Rail to Crawford House and Fabyan House, Bethlehem, Profile House, Bethlehem, thence via Concord, Nashua, Boston, Rail and Sound Steamer **\$47.25**

NEW YORK.

*1 *Form X 37.* Via Montreal, Quebec, Sherbrooke, Newport, Wells River, Bethlehem, Profile House, Bethlehem, Rail to Fabyan House, Crawford House and back to Fabyan's, thence via Concord, Nashua, Boston, Rail and Sound Steamer..... **\$37.50**

NEW YORK.

Form X 42. Via Montreal, St. Johns, Burlington, Lake Champlain, Ft. Ticonderoga, Saratoga, Albany, and Day Line Steamers..... **\$23.00**

NEW YORK.

Form X 43. Via Montreal, St. Johns, Burlington, Lake Champlain, Lake George, Saratoga, Albany, and Day Line Steamers..... **\$26.00**

NEW YORK.

Form X 44. Via Ogdensburg, St. Albans, Burlington, Lake Champlain, Ft. Ticonderoga, Saratoga, Albany and Day Line Steamers..... **\$23.00**

NEW YORK.

Form X 45. Via Ogdensburg, St. Albans, Burlington, Lake Champlain, Lake George, Saratoga and Day Line Steamers **\$26.00**

NEW YORK.

Form X 46. Via Montreal, St. Johns, Burlington, Bellows Falls and Springfield..... **\$22.25**

Routes and Rates of Fare from Niagara Falls. 7

	NEW YORK. <i>Form X 51.</i> Via Ogdensburg, St. Albans, White River Junction and Springfield.....	\$22.25
23.00	NEW YORK. <i>Form X 138.</i> Via Montreal, Sherbrooke, White River Junction, South Vernon and Springfield.....	\$23.00
24.00	NEW YORK. <i>Form X 139.</i> Via Montreal, Quebec, Sherbrooke, White River Junction, S. Vernon and Springfield.....	\$26.00
27.00	NEW YORK. <i>Form X 140.</i> Via Montreal, Sherbrooke, White River Junction, Concord, Nashua, Boston, Rail and Sound Steamer.....	\$24.75
26.00	NEW YORK. <i>Form X 141.</i> Via Montreal, Quebec, Sherbrooke, White River Junction, Concord, Nashua, Boston, Rail and Sound Steamer.....	\$27.75
23.00	NEW YORK. <i>Form X 150.</i> Via Montreal, Groveton, Concord, Nashua, Lowell, Mansfield, Weir Junction to Fall River or Newport, and thence by Steamer.....	\$27.50
45.00	NEW YORK. <i>Form X 155.</i> Via Ogdensburg, St. Albans, Burlington, Lake Champlain, Ft. Ticonderoga, Saratoga, Troy and N. Y. C. & H. R. R.R.....	\$24.00
	NEW YORK. <i>Form X 156.</i> Via Ogdensburg, St. Albans, Burlington, Lake Champlain, Lake George, Glens Falls, Saratoga, Troy and N. Y. C. & H. R. R.R.....	\$27.00
47.25	NEW YORK. <i>Form X 185.</i> Via Montreal, Rouse's Point, Plattsburg, Lake Champlain to Burlington, Central Vermont R.R. to New York via South Vernon and Springfield..	\$25.00
	NEW YORK. *3 <i>Form X 186.</i> Via Montreal, Quebec, Gorham, Stages to Glen House and Tip Top House, Mt. Washington R.R. to Base, Rail to Crawford House, Fabyan House, Bethlehem, Profile House, Bethlehem, Wells River, Montpelier, Burlington, Lake Champlain, Lake George, Glens Falls, Saratoga and Albany, and Day Line Steamers....	\$51.75
37.50	NEW YORK. *3 <i>Form X 187.</i> Via Montreal, Quebec, Gorham, Stages to Glen House and Tip Top House, Mt. Washington R.R. to Base, Rail to Crawford House, Fabyan House and Bethlehem, Profile House, Bethlehem, Wells River, Montpelier, Burlington, Lake Champlain, Lake George, Glens Falls, Saratoga and Albany, and People's Line Steamers	\$51.75
23.00	NEW YORK. <i>Form X 188.</i> Via Montreal, Quebec, Sherbrooke, Wells River, Montpelier, Burlington, Lake Champlain, Lake George, Glens Falls, Saratoga, Albany, and Day Line Steamers.....	\$34.75
26.00	NEW YORK. <i>Form X 189.</i> Via Montreal, Quebec, Sherbrooke, Wells River, Montpelier, Burlington, Lake Champlain, Lake George, Glens Falls, Saratoga, Albany, and People's Line Steamers.....	\$34.75
22.25		

Routes and Rates of Fare from Niagara Falls.

NEW YORK.

*1 *Form X 190.* Via Montreal, Quebec, Sherbrooke, Wells River, Bethlehem, Profile House, Bethlehem, Fabyan's, Crawford House and back to Fabyan's, Wells River, White River Junction, South Vernon and Springfield.. **\$34.50**

NEW YORK.

*2 *Form X 191.* Via Montreal, Gorham, Stages to Glen House and Tip Top House, Mt. Washington R.R. to Base, Fabyan's, Bethlehem, Profile House, Bethlehem, Concord, Nashua, Lowell, Boston, Rail and Sound Steamer..... **\$43.50**

NEW YORK.

Form X 192. Via Montreal, Groveton, Fabyan's, Base of Mountain, Mt. Washington R.R. to Summit, Stages to Glen House and North Conway, E. R.R. to Boston, Rail and Sound Steamer..... **\$37.25**

NEW YORK.

*1 *Form X 193.* Via Montreal, Rouse's Point, Plattsburg, Lake Champlain to Burlington, Rail to Montpelier, Wells River, Bethlehem, Profile House, Bethlehem, Fabyan's, Crawford House and Base of Mountain, Mt. Washington R.R. to Summit, Stages to Glen House and Glen Station, Rail to Portland and Boston, Rail and Sound Steamer..... **\$43.50**

NEW YORK.

*1 *Form X 194.* Via Montreal, Quebec, Sherbrooke, Wells River, Bethlehem, Profile House, Bethlehem, Fabyan's, Crawford House and back to Fabyan's, Concord, Nashua, Lowell and Boston, Rail and Sound Steamer..... **\$37.50**

NEW YORK.

Form X 195. Via Montreal, Quebec, Gorham, Stages to Glen House and Tip-Top House and back to Glen House, Glen Station, Rail to Portland and Boston, Rail and Sound Steamer..... **\$38.00**

NEW YORK.

† *Form X 196.* Via Montreal, St. Lambert, West Farnham, Newport, Wells River, Bethlehem, Profile House, Bethlehem, Fabyan's, Crawford House, Portland and Boston, Rail and Sound Steamer..... **\$33.25**

NEW YORK.

*1 *Form X 197.* Via Montreal, Sherbrooke, Wells River, Bethlehem, Profile House, Bethlehem, Fabyan's, Crawford's, North Conway, Boston via E. R.R., Rail and Sound Steamer..... **\$33.50**

NEW YORK.

Form X 198. Via Montreal, Quebec, Gorham, Stages to Glen House and North Conway, Boston via E. R.R., Rail and Sound Steamer..... **\$33.00**

NEW YORK.

*1 *Form X 199.* Via Montreal, Sherbrooke, Wells River, Bethlehem, Profile House, Bethlehem, Fabyan House, Base of Mountain, Mt. Washington R.R. to Summit of Mt. Washington and return, Rail to Crawford House, North Conway, Wolfboro, Steamer to Weirs, Rail to Concord, Nashua, Lowell and Boston, Rail and Sound Steamer..... **\$44.50**

Routes and Rates of Fare from Niagara Falls.

9

NEW YORK.

Form X 201. Via Montreal, Rouse's Point, Plattsburg, Lake Champlain to Burlington, Rail to Montpelier, Wells River, Fabyan's, Base of Mountain, Mt. Washington R.R. to Summit and back, Rail to Crawford, North Conway, Boston via E. R.R., Rail and Sound Steamer..... **\$39.00**

NEW YORK.

*1 *Form X 202.* Via Montreal, Sherbrooke, Wells River, Bethlehem, Profile House, Bethlehem, Fabyan's, Crawford House, Portland and Boston, Rail and Sound Steamer..... **\$33.25**

NEW YORK.

Form 2678. Via Montreal, Quebec, River du Loup, Inter. Ry. to Halifax, St. John, Steamer to Portland, Rail to Boston, and Sound Steamer..... **\$38.50**

NEW YORK.

Form 2679. Via Montreal, Quebec, River du Loup, Intercolonial Ry. to Point du Chene, Steamer to Summerside, Rail to Charlottetown, Steamer to Pictou, Rail to Halifax, St. John, Steamer to Portland, Rail to Boston, and Sound Steamer..... **\$42.50**

NEW YORK.

† *Form 2729.* Via Montreal, St. Lambert, W. Farnham, Newport, White-River Junction, Springfield, Hartford and New Haven..... **\$23.75**

NEW YORK.

† *Form 2730.* Via Montreal, St. Lambert, W. Farnham, Newport, Wells River, Concord, Nashua, Worcester, Norwich, Sound Steamer..... **\$25.50**

NEW YORK.

† *Form 2731.* Via Montreal, St. Lambert, W. Farnham, *4 Newport, Wells River, Bethlehem, Profile House, Plymouth, Concord, Nashua, Worcester, Norwich, Sound Steamer.. **\$32.00**

NEW YORK.

† *Form 2732.* Via Montreal, St. Lambert, W. Farnham, *1 Newport, Wells River, Bethlehem Profile House, Bethlehem, Fabyan's, Summit Mt. Washington, Glen House, Gorham, Portland, Boston, Sound Steamer... **\$41.50**

NEW YORK.

Form 2751. Via Montreal, Quebec, Gorham, Glen House, Summit Mt. Washington, Glen House, Glen Station, Crawford House, Fabyan's, Wells River, White River Junction, Springfield, New Haven..... **\$42.00**

NEW YORK.

Form 2752. Via Montreal, St. Johns, Rutland, State Line, Troy, Albany, and via New York Central and Hudson River R.R..... **\$24.00**

NEW YORK.

Form 2753. Via Montreal, St. Johns, Rutland, State Line, Troy, Albany, People's Line Steamers..... **\$23.00**

NEW YORK.

Form 2754. Via Montreal, St. Johns, Rutland, State Line, Troy, Albany, Day Line Steamers..... **\$23.00**

\$34.50

\$43.50

\$37.25

\$43.50

\$37.50

\$38.00

\$33.25

\$33.50

\$33.00

\$44.50

NEW YORK.

*1 *Form 2755.* Via Montreal, St. Johns, Montpelier, Wells River, Bethlehem, Profile House, Bethlehem, Fabyan's, Crawford House, North Conway, Portland, Boston, Sound Steamer..... **\$33.75**

NEW YORK.

*1 *Form 2756.* Via Montreal, St. Johns, Montpelier, Wells River, Bethlehem, Profile House, Bethlehem, Fabyan's, Crawford House, Fabyan's, Summit Mount Washington, Glen House, Glen Station, North Conway, Boston, Sound Steamer..... **\$43.25**

NEW YORK.

Form 2905. Via Montreal, St. Johns, St. Albans, Burlington, Lancelster Junction, Ticonderoga, Roger's Rock Hotel, Lake George, Caldwell, Glens Falls, Saratoga and N. Y. C. & H. R. R.R **\$27.00**

NEW YORK.

Form 2906. Via Montreal, St. Johns, St. Albans, Bellows Falls, Miller's Falls, New London, and Norwich Line Steamers..... **\$22.25**

NEW YORK.

Form 2907. Via Montreal, Quebec, Gorham, Glen House, Summit Mt. Washington, Base, Fabyan's Crawford House and back to Fabyan's, Wells River, White River Junction, Bellows Falls, Miller's Falls, New London, and Norwich Line Steamers..... **\$41.60**

NEW YORK.

*1 *Form 2908.* Via Montreal, St. Johns, St. Albans, Montpelier, Wells River, Bethlehem, Profile House, Bethlehem, Fabyan's, Crawford House, back to Wells River, White River Junction, Bellows Falls, Miller's Falls, New London, and Norwich Line Steamer..... **\$33.50**

NEW YORK.

Form 2960. Via Montreal, Quebec, Gorham, Stages to Glen House and Summit Mt. Washington, Summit to Base by Mt. Washington R.R., Fabyan's, Crawford House, Fabyan's, Bethlehem, Profile House, Stage to Plymouth, thence via Concord, Nashua, Lowell, Boston, and Rail and Sound Steamer **\$46.50**

NEW YORK.

Form 2963. Via Montreal, Gorham, Stages to Glen House and Summit Mt. Washington, Summit to Base by Mt. Washington R.R., Fabyan's, Bethlehem, Profile House, Stage to Plymouth, thence via Concord, Nashua, Lowell, Boston and Sound Steamer **\$42.50**

OGDENSBURG.

Form X 5. Via Rail or Steamer..... **\$3.75**

PORTLAND.

Form X 10. Via Montreal, Quebec and Gorham..... **\$22.50**

PORTLAND.

Form X 14. Via Montreal and Gorham direct..... **\$19.50**

PORTLAND.

Form X 40. Via Montreal and Gorham, and return by Grand Trunk Railway..... **\$28.50**

Routes and Rates of Fare from Niagara Falls. 11

	PRESCOTT.	
	Form X 4. Via Rail or Steamer.....	\$8.75
	PRESCOTT.	
33.75	Form X 90. Via Suspension Bridge, Rail to Toronto, and Steamer or Rail.....	\$8.75
	PRESCOTT.	
43.25	Form X 91. Via Suspension Bridge, Rail to Toronto, and Steamer or Rail.....	\$8.75
	PRESCOTT.	
	Form X 92. Via Suspension Bridge, Steamer from Niagara to Toronto, and Steamer or Rail.....	\$8.75
	PRESCOTT.	
27.00	Form X 93. Via Suspension Bridge, Steamer from Niagara to Toronto, and Steamer or Rail.....	\$8.75
	PRESCOTT.	
22.25	Form 2797. Via N.Y.C. R.R. and Steamer from Char- lotte.....	\$8.75
	PROFILE HOUSE.	
	*4 Form X 47. Via Montreal, St. Johns, White River Junction, Wells River and Bethlehem.....	\$21.25
	PROFILE HOUSE.	
41.60	*4 Form X 48. Via Ogdensburg, St. Albans, White River Junction, Wells River and Bethlehem.....	\$21.25
	PROFILE HOUSE.	
	Form X 102. Via Montreal, Gorham, Stages to Glen House and Tip Top House, Mt. Washington R.R. to Base of Mountain, Rail to Crawford House, Fabyan House, Bethlehem.....	\$31.75
33.50	PROFILE HOUSE.	
	Form X 103. Via Montreal, Quebec, Gorham, Stages to Glen House and Tip Top House, Mt. Washington R.R. to base of Mountain, Rail to Crawford House, Fabyan House, Bethlehem.....	\$34.75
	PROFILE HOUSE.	
46.50	*4 Form 2575. Via Montreal, St. Johns, Montpeller, Wells River, and Bethlehem.....	\$21.75
	PROFILE HOUSE.	
	† Form 2576. Via Montreal, St. Lambert, W. Farnham, *4 Newport, Wells River, Bethlehem.....	\$21.00
42.50	QUEBEC.	
	Form X 7. Via Rail or Steamer.....	\$14.50
8.75	QUEBEC and back to MONTREAL.	
	Form X 8. Via Rail or Steamer.....	\$17.00
22.50	SARATOGA	
	Form X 18. Via Montreal, Rouse's Point, Plattsburg, Lake Champlain and Lake George.....	\$23.00
19.50	SARATOGA.	
	Form X 23. Via Montreal, Rouse's Point, Plattsburg, Lake Champlain and Fort Ticonderoga.....	\$20.25

33.75

43.25

27.00

22.25

41.60

33.50

46.50

42.50

8.75

22.50

19.50

23.50

12 Routes and Rates of Fare from Niagara Falls.

SARATOGA.

*3 **Form X 28.** Via Montreal, Gorham, Stages to Glen House and Tip Top House, Mt. Washington R.R. to Base of Mountain, Crawford and Fabyan Houses, Bethlehem, Profile House, Bethlehem, Wells River, White River Junction, Burlington, and via Lake Champlain, Lake George and Glens Falls **\$47.75**

SARATOGA.

Form X 52. Via Montreal, St. Johns, Burlington, Lake Champlain and Fort Ticonderoga **\$20.00**

SARATOGA.

Form X 53. Via Montreal, St. Johns, Burlington, Lake Champlain and Lake George **\$22.75**

SARATOGA.

Form X 54. Via Ogdensburg, St. Albans, Burlington, Lake Champlain and Fort Ticonderoga **\$20.00**

SARATOGA.

Form X 55. Via Ogdensburg, St. Albans, Burlington, Lake Champlain and Lake George **\$22.75**

SARATOGA.

Form 2570. Via Montreal, Gorham, Stage to Glen House and Summit, Mt. Washington R.R. to Base, Fabyan's, Bethlehem, Profile House, Plymouth, Wells River, Montpelier, Burlington, Lake Champlain, Lake George and Glens Falls... **\$47.00**

SARATOGA.

† **Form 2733.** Via Montreal, St. Lambert, W. Farnham, Newport, Wells River, Montpelier, Burlington, Fort Ticonderoga, Lake George, Glens Falls **\$28.75**

SARATOGA.

Form 2909. Via Montreal, St. Johns, St. Albans, Burlington, Rutland and Whitehall **\$30.00**

R
CR.
*5
MO
MO
MO
with
"La
Vict
boat
can
arri
obta
Wha
MO
MO

SIDE ISSUES
TO
RIVER SAGUENAY,
THOUSAND ISLANDS,
AND
Rapids of River St. Lawrence, &c.

CRAWFORD HOUSE to SARATOGA.

*5 *Form 2571.* Via North Conway, Wolfboro, Weirs, Plymouth, Stage to Profile House, Bethlehem, Wells River, Montpelier and Burlington, Lake Champlain, Lake George and Glen's Falls..... **\$23.25**

MONTREAL to CORNWALL and return.

Form 2501...... **\$3.35**

MONTREAL to KINGSTON and return.

E 2500. Grand Trunk Railway to Kingston, Steamer through Thousand Islands and Rapids of St. Lawrence to Montreal..... **\$8.00**

MONTREAL to LACHINE and return.

Rail to Lachine, Steamer (shooting the Rapids)..... **\$.50**

A train Leaves Montreal at 7 A.M., daily, and connects at Lachine with the new steamer "Beauharnois," which leaves at 8 A.M., shoots the "Lachine Rapids" (the finest of the St. Lawrence), passes under the Victoria Bridge, and arrives at Montreal about 9 A.M. This is the only boat which runs the Lachine Rapids during the entire season, and which can be depended on to run at a regularly advertised hour. The train arrives at Lachine at 7.30 A.M., which gives passengers ample time to obtain a comfortable breakfast at a hotel directly opposite the Steamboat Wharf.

MONTREAL to OTTAWA.

Form 2980. Via G. T. Ry. to Lachine, O. R. N. Co. Steamer to Ottawa..... **\$2.50**

MONTREAL to OTTAWA and return.

Form 2982. Via G. T. Ry. to Lachine, O. R. N. Co. Steamer to Ottawa, returning by O. R. N. Co. Steamer to Lachine, G. T. R. or Steamer to Montreal..... **\$4.00**

MONTREAL to PRESCOTT and return.	
Form 2509.....	\$5.60
MONTREAL to QUEBEC and back.	
Form X 41. Via Rail or Steamer.....	\$5.00
NEW YORK to PHILADELPHIA.	
Form 2577. Via Pennsylvania R.R.....	\$2.50
NEW YORK to PHILADELPHIA and return.	
Form 2578. Via Pennsylvania R.R.....	\$5.00
OTTAWA to MONTREAL.	
Form 2979. Via O. R. N. Co. Steamer to Lachine, G. T. Ry. or Steamer to Montreal	\$2.50
OTTAWA to MONTREAL and return.	
Form 2981. Via O. R. N. Co. Steamer to Lachine, G. T. Ry. or Steamer to Montreal, returning by G. T. Ry. to Lachine, O. R. N. Co. Steamer to Ottawa	\$4.00
PORT KENT to AUSABLE CHASM and return.	
Form X 96. Via Stage.....	.75
PRESCOTT to OTTAWA CITY and return.	
Form X 97. Via St. Lawrence and Ottawa Railway...	\$3.25
QUEBEC to CACOUNA and return.	
Form X 65. Via Grand Trunk Railway or Steamer from Quebec to Rivière du Loup and Intercolonial R.R.	\$4.50
QUEBEC to HA-HA BAY and return.	
Form X 67. Via Grand Trunk Railway or Steamer from Quebec to Rivière du Loup.....	\$3.00
QUEBEC to TADOUSAC and return.	
Form X 66. Via Grand Trunk Railway or Steamer from Quebec to Rivière du Loup.....	\$7.50
RICHMOND to QUEBEC and back.	
Form X 56. Via Grand Trunk Railway	\$3.00
RIVIERE DU LOUP to HA-HA BAY and return.	
Form 2761.....	\$5.50
TORONTO to COUCHICHING and return.	
Form 2569. Via Northern Railway, Toronto to Lake Couchiching and return.....	\$3.50
TORONTO to NIAGARA FALLS and return.	
Form X 87. Steamer to Lewiston, Rail to Falls. Return same way.....	\$3.00
TORONTO to NIAGARA FALLS and return.	
All Rail. G. W. Railway.....	\$4.00

EXCURSIONS

TO

MONTREAL, QUEBEC, AND THE LOWER PROVINCES

BOSTON to HALIFAX.

Form 2779. Via Portland (B. & M. or E. R. R.), Quebec (G. T.), Riviere Du Loup (G. T.), Pt. Du Chene (Inter. Ry.), Summerside (Steamer), Charlottetown (P. E. I. Ry.), Pictou (Steamer), to Halifax (Inter. Ry.)..... **\$26.00**

HALIFAX to BOSTON.

Form 2773. Reverse of 2772.....**\$26.00**

BOSTON to HALIFAX.

Form 2774. Via Portland (B. & M. or E. R. R.), Quebec (G. T.), Riviere Du Loup (G. T.), to Halifax direct (Inter. Ry.)..... **\$21.50**

HALIFAX to BOSTON.

Form 2775. Reverse of 2774..... **\$21.50**

BOSTON to HALIFAX.

Form 2778. Via Portland (B. & M. or E. R. R.), Montreal (G. T.), Quebec (Rail or Boat), Riviere Du Loup (G. T.), Pt. Du Chene (Inter. Ry.), Summerside (Stmr), Charlottetown (P. E. I. Ry.), Pictou (Steamer), to Halifax (Inter. Ry.)..... **\$27.50**

HALIFAX to BOSTON.

Form 2779. Reverse of 2778..... **\$27.50**

BOSTON to HALIFAX.

Form 2780. Via Portland (B. & M. or E. R. R.), Montreal (G. T.), Quebec (Rail or Boat), Riviere Du Loup (G. T.), to Halifax direct (Inter. Ry.)..... **\$23.00**

HALIFAX to BOSTON.

Form 2781. Reverse of 2780..... **\$23.00**

BOSTON to HALIFAX.*

Form 2782. Via Portland (B. & M. or E. R. R.), St. John, N. B. (Steamer), to Halifax (Inter. Ry.)..... **\$10.50**

HALIFAX to BOSTON.*

Form 2783. Reverse of 2782..... **\$10.50**

* To be sold only in connection with other Tickets over the G. T. Ry.

\$5.60
\$5.00
\$2.50
\$5.00
\$2.50
\$4.00
.75
\$3.25
\$4.50
\$8.00
\$7.50
\$3.00
\$5.50
\$3.50
\$3.00
\$4.00

Various Excursion Routes

AT REDUCED RATES.

BOSTON TO ANDOVER, ME., and RETURN. Via Bryant's Pond.....	\$10.00
BOSTON TO BETHEL and RETURN. Via Portland	\$8.00
BOSTON TO BRYANT'S POND and RETURN. Via Portland.....	\$7.50
BOSTON TO CHICAGO and RETURN. X 203. Via Central Vermont Railway and Montreal to Chicago, re- turn via Buffalo and Albany.....	\$41.00
BOSTON TO CHICAGO and RETURN. X 204. The reverse of 203.....	\$41.00
BOSTON TO CHICAGO and RETURN. 2828. Via Portland, Montreal and Detroit, all rail. Return same way.....	\$38.00
BOSTON TO CHICAGO or MILWAUKEE and RE- TURN. 2829. Rail via Portland and Montreal to Sarnia; Steamers via Lakes to Milwaukee or Chicago. Return same way. (Meals and berths included on Sarnia Line Steamers).....	\$36.00
BOSTON TO DETROIT and RETURN. X 207. Via Central Vermont Railway and Montreal to Detroit and return via Buffalo and Albany.....	\$31.00
BOSTON TO DETROIT and RETURN. X 208. The reverse of 207.....	\$31.00
BOSTON TO DETROIT and RETURN. 2915. All rail via Grand Trunk Railway.....	\$31.00
BOSTON TO DULUTH or FT. WILLIAM and RE- TURN. Steamer from Port Huron.....	\$57.25
BOSTON TO MECHANIC FALLS and RETURN....	\$5.50
BOSTON TO MONTREAL and RETURN. X 110. Via Portland, Grand Trunk and Vermont Central Rail- ways.....	\$20.00
BOSTON TO MONTREAL and RETURN. X 111. Via Vermont Central and Grand Trunk Railways.....	\$20.00
BOSTON TO MONTREAL and RETURN. X 112. Via Portland, Grand Trunk Railway, Rutland and Bur- lington.....	\$20.00
BOSTON TO MONTREAL and RETURN. X 113. Via Fitchburg, Rutland and Burlington, and Grand Trunk Railway.....	\$20.00

Excursion Routes at Reduced Rates.

17

	BOSTON TO MONTREAL and RETURN. 2803. Via Portland and Gorham (White Mountains).....	\$18.00
	BOSTON TO MONTREAL and RETURN. 2804. Via B. & M. and G. T. Ry's to Pt. Levi, Steamer to Montreal, return via Portland.....	\$22.00
	BOSTON TO MONTREAL and RETURN. 2859. B. & M. or E. and G. T. to Montreal, return via Groveton Jct., Concord & Nashua.....	\$20.00
	BOSTON TO MONTREAL and RETURN. 2860. Reverse of 2859.....	\$20.00
	BOSTON TO MONTREAL and RETURN. Via Port- land and Gorham. Return same way. (15 day lim.t.)...	\$16.00
	BOSTON TO NORTH STRATFORD and RETURN. Via B. & M. or E. R.R. to Portland; G. T. Railway to North Stratford. Return same way.....	\$11.00
	BOSTON TO POLAND SPRINGS and RETURN....	\$6.00
	BOSTON TO POINT LEVI and RETURN. 2805. Via Portland and Gorham (White Mountains).....	\$20.00
	BOSTON TO POINT LEVI and RETURN. 2806. Via B. & M. and G. T. Ry's to Montreal, Steamer to Quebec, return via G. T. and B. & M. Ry's.....	\$22.00
	BOSTON TO POINT LEVI and RETURN. 2853. Via Nashua, Concord, Wells River, Sherbrooke and G. T. R'y, return via G. T. and B. & M. Ry's.....	\$22.00
	BOSTON TO POINT LEVI and RETURN. 2854. Reverse of 2853.....	\$22.00
	BOSTON TO POINT LEVI and RETURN. 2855. B. & M. or E. and G. T. R'y to Point Levi, return via Groveton, Concord & Nashua.....	\$22.00
	BOSTON TO POINT LEVI and RETURN. 2856. Reverse of 2855.....	\$22.00
	BOSTON TO POINT LEVI and RETURN. Via Port- land and Gorham. Return same way. (15 day limit.)...	\$18.00
	BOSTON TO QUEBEC and RETURN. X 130. Via Portland and Grand Trunk Railway to Quebec, Rail or Steamer to Montreal, Vermont Central R.R. to Boston..	\$22.00
	BOSTON TO QUEBEC and RETURN. X 131. Via Vermont Central Railway to Montreal, Rail or Steamer to Quebec, Rail via Portland to Boston.....	\$22.00
	BOSTON TO SOUTH PARIS and Return. Via Port- land.....	\$6.25

OS

10.00

\$8.00

\$7.50

\$1.00

\$1.00

\$38.00

\$36.00

\$31.00

\$31.00

\$31.00

\$57.25

\$5.50

\$20.00

\$20.00

\$20.00

\$20.00

EXCURSION ROUTES

TO AND FROM THE

White Mountains.

BOSTON to BOSTON. X 164. Rail or steamer to Portland, rail to Gorham, stage to Glen House and Return to Gorham, rail via Groveton to Littleton, stage to Profile House and Plymouth, rail via Concord to Boston.....	\$21.50
BOSTON to BOSTON. X 165. Rail or steamer to Portland, rail to Gorham, stage to Glen House and return to Gorham, rail via Groveton to Littleton, stage to Profile House and return, rail via Wells River, Concord and Nashua.....	\$21.50
BOSTON to CRAWFORD HOUSE and RETURN. X 73. Rail or steamer to Portland, rail to Gorham, stage via Glen House to Tip Top House, Mt. Washington Railroad summit to base, rail to Crawford House; return same way.....	\$30.00
BOSTON to CRAWFORD HOUSE (via Lake Winnepiscogee) and RETURN. X 74. Boston & Maine Railroad to Alton Bay, steamer Mt. Washington to Centre Harbor, stage to North Conway, P. & O. R.R. to Crawford House, rail to base of Mt. Washington, Mt. Washington Railroad base to summit, stage Tip Top House via Glen House to Gorham, rail to Portland, rail or steamer to Boston.....	\$23.75
BOSTON to CRAWFORD HOUSE (via Lake Winnepiscogee) and RETURN. X 75. Rail or steamer to Portland, rail to Gorham, stage via Glen House to Tip Top House, Mt. Washington R.R. summit to base, rail to Crawford House, P. & O. R.R. to No. Conway, stage to Centre Harbor, steamer Mt. Washington, to Alton Bay, Boston & Maine R.R. to Boston....	\$23.75
BOSTON to CRAWFORD HOUSE and RETURN. X 132. Eastern Railroad to North Conway, P. & O. R.R. to Crawford House, rail to base of Mt. Washington, Mt. Washington Railway base to summit, stage Tip Top House via Glen House to Gorham, rail to Portland, rail or steamer to Boston.....	\$22.00
BOSTON to CRAWFORD HOUSE and RETURN. X 133. Rail or steamer to Portland, rail to Gorham, stage via Glen House to Tip Top House, Mt. Washington Railroad summit to base, rail to Crawford House, P. & O. R.R. to North Conway, Eastern Railroad to Boston.....	\$22.00
BOSTON to GLEN HOUSE and RETURN. X 72. Rail or steamer to Portland, rail to Gorham, stage to Glen House; return same way.....	\$11.00
BOSTON to GLEN HOUSE and RETURN. X 134. Rail or steamer to Portland, rail to Gorham, stage to Glen House and North Conway, Eastern Railroad to Boston.....	\$14.00
BOSTON to GLEN HOUSE and RETURN. X 135. Eastern Railroad to North Conway, stage to Glen House and Gorham, rail to Portland, rail or steamer to Boston.....	\$14.00
BOSTON to GLEN HOUSE and RETURN. 2919. B. & M. or Eastern R.R. to Portland, G. T. Ry to Gorham, stage to Glen House, Glen Station and No. Conway; Eastern Railroad to Wolfboro', Steamer to Centre Harbor and Alton Bay; B. & M. R.R. to Boston.....	\$17.00
BOSTON to GLEN HOUSE and RETURN. 2920. Reverse of 2919.....	\$17.00
BOSTON to GORHAM and RETURN. All Rail.....	\$8.00

EXCURSIONS TO THE RANGELEY LAKES.

S.

21.50

BOSTON to UMBAGOG LAKES and return (Upton).
Via Portland and Bethel..... **\$11.00**

21.50

BOSTON to MIDDLE DAM and return.
Form 2983. Via Portland, Bryant's Pond, Andover,
Arm of Lake..... **\$13.50**

30.00

BOSTON to UPPER DAM and return.
Form 2984. Via Portland, Bryant's Pond, Andover,
Arm of Lake..... **\$14.00**

23.75

BOSTON to INDIAN ROCK and return.
Form 2985. Via Portland, Bryant's Pond, Andover,
Arm of Lake and Upper Dam..... **\$15.25**

23.75

BOSTON to RANGELEY OUTLET and return.
Form 2986. Via Portland, Bryant's Pond, Andover,
Arm of Lake, Upper Dam, Indian Rock, Rangeley Outlet
or Mountain View House. Returning via Greenvale, or
Rangeley, Phillips, Farmington and Portland..... **\$18.00**

22.00

BOSTON to RANGELEY OUTLET and return.
Form 2987. Via Portland, Farmington and Phillips.
Returning via Andover, Bryant's Pond and G.T. Ry.... **\$18.00**

22.00

NOTE.—The fares as shown in the foregoing Routes, on pages 16-19,
are by Rail between Boston and Portland. If passengers desire to go
by Steamer, the fares will be **\$1.00** less.

11.00

The Portland Steam Packet Company's favorite Side-wheel Steamers,
"John Brooks" and "Forest City," form a daily line, — leaving
India Wharf, Boston, every evening at 7.00 P.M., and Franklin Wharf,
Portland, every evening at 7.00 P.M., Sundays excepted.

14.00

Passengers to or from Lewiston, Poland Springs, the White Moun-
tains, Montreal, Quebec, &c., via the Grand Trunk Railway, will find
this a pleasant as well as a favorite route, whereby they can enjoy a
comfortable night's rest, beside the additional enjoyment of one of the
finest ocean trips on the Eastern coast, and arrive at both Portland and Bos-
ton in season to connect with the early trains.

14.00

Baggage is transferred at Portland from the Steamboat Wharf to the
Grand Trunk Railway Depot "free," and without any trouble to passen-
gers.

17.00

17.00

8.00

EXCURSION RATES

—FROM—

PORTLAND.

PORTLAND TO YARMOUTH, ME., and RETURN	\$300.50
PORTLAND TO NEW GLOSTER, ME., and RETURN	\$1.25
PORTLAND TO LEWISTON, ME., and RETURN	\$1.60
PORTLAND TO SO. PARIS, ME., and RETURN	\$3.15
PORTLAND TO BRYANT'S POND, ME., and RETURN	\$4.00
PORTLAND TO BETHEL, ME., and RETURN	\$4.50
PORTLAND TO GORHAM, ME., and RETURN	\$5.00
PORTLAND TO NO. STRATFORD and RETURN	\$8.00
PORTLAND TO MONTREAL and RETURN.....	\$15.00
PORTLAND TO POINT LEVI and RETURN.....	\$17.00
PORTLAND TO LONDON and RETURN.....	\$25.00
PORTLAND TO SARNIA and RETURN... ..	\$28.00
PORTLAND TO DETROIT and RETURN.....	\$28.00
PORTLAND TO CHICAGO and RETURN.....	\$38.00

Excursion Rates, Portland to the Rangeley Lakes, are \$3.00 less than those shown from Boston, on page 19.

Chicago, Milwaukee & St. Paul Railway.

THE GREAT THROUGH LINE.

CHICAGO, NORTHWEST WISCONSIN,

NORTHERN IOWA, MINNESOTA,

Dakota, Manitoba and the Black Hills,

Passing through a finer country, with grander scenery, and connecting more business centres and pleasure resorts than any other Northwestern Line. Connecting in Chicago with all Eastern and Southern Lines.

Chicago Depot, corner Canal and West Madison Streets.

Horse-Cars and Stage Lines for all parts of the City constantly passing.

Chicago City Office, 61 and 63 Clark Street.

THE ONLY THROUGH LINE

BETWEEN

*Chicago, Milwaukee, Sparta, La Crosse, Winona, Madison,
McGregor, Owatonna, St. Paul and Minneapolis.*

THE ONLY THROUGH RAIL LINE via Milwaukee, the Commercial Metropolis of Wisconsin.

THROUGH TICKETS BETWEEN

CHICAGO, ST. PAUL or MINNEAPOLIS,

ARE GOOD EITHER VIA

Oconomowoc, Watertown, Portage, Kilbourn City, Tomah, Sparta, La Crosse, Winona, Wabasha, Reed's Landing, Lake City, Red Wing, Hastings, &c. or via Waukesha, Whitewater, Madison, Prairie du Chien, McGregor, Austin, Owatonna, Faribault, &c.

The first route traverses the valley of the Upper Mississippi from La Crosse to Minneapolis, along the shore of Lake Pepin, and all the *Grand Scenery of that region.*

The other route passes through the Garden of Minnesota and Iowa.

Palace Sleeping Cars and Coaches.

UPHOLSTERED SECOND-CLASS CARS.

Westingh use latest improved Automatic Air-Brake, with Miller Safety Platforms and Couplings, on all Cars.

THOROUGHLY BALLASTED STEEL-RAIL TRACK.

JOS. R. HIXSON,

A. V. H. CARPENTER,

Genl. N. E. Agent,

Gen. Pass. and Ticket Agt.

306 Washington St., Boston.

ES

\$00.50

\$1.25

\$1.60

\$3.15

\$4.00

\$4.50

\$5.00

\$8.00

\$15.00

\$17.00

\$25.00

\$28.00

\$28.00

\$38.00

as than

THE
CHICAGO & NORTH-WESTERN
RAILWAY

Is the **Oldest, Best Constructed, Best Equipped,**
 —AND HENCE THE:—
MOST RELIABLE RAILWAY CORPORATION OF THE
GREAT WEST.

It is to-day, and will long remain the
LEADING RAILWAY OF THE WEST AND NORTH-WEST.
 It embraces under one Management
2,158 MILES OF ROAD.

"Chicago, La Crosse, Winona & Minnesota L'e."
 "Chicago, St. Paul & Minneapolis Line."
 "Chicago, Milwaukee & Lake Superior Line."
 "Chicago, Green Bay & Marquette Line."



"Chicago, Council Bluffs & California Line."
 "Chicago, Sioux City & Yankton Line."
 "Chicago, Clinton, Dubuque & La Crosse Line."
 "Chicago, Freeport & Dubuque Line."

MAP OF THE CHICAGO & NORTH-WESTERN RAILWAY.

PULLMAN HOTEL CARS are run alone by it through between
CHICAGO AND COUNCIL BLUFFS,

No other road runs Pullman Hotel Cars, or any other form of Hotel Cars, through, between Chicago and the Missouri River. **PULLMAN PALACE DRAWING ROOM CARS** are run on all through trains of this road. This is the **ONLY LINE** running these cars between Chicago and St. Paul and Minneapolis, Chicago and Milwaukee, Chicago and Winona, or Chicago and Green Bay.

Close connections are made at Chicago with the Lake Shore & Michigan Southern, Michigan Central, Baltimore & Ohio, Pittsburg, Fort Wayne & Chicago, Kankakee Line and Pan Handle Routes, from all points **EAST**, and with the Chicago & Eastern Illinois R.R., from all points **SOUTH** and **SOUTHWEST**, and with the Chicago & Alton and Illinois Central from all points **SOUTH**. Close connections made at junction points with trains of all cross roads. Tickets over this route are sold by all Compton Ticket Agents in the United States and Canada. Remember, you ask for your Tickets via the Chicago & North-Western Railway, and take none other.

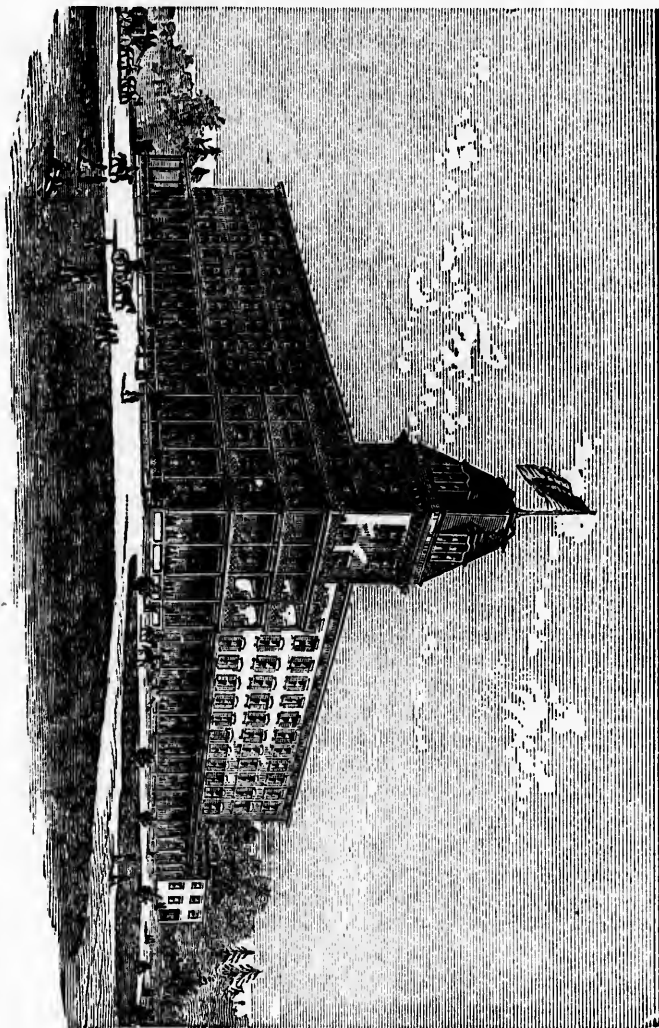
New York Office, No. 415 Broadway. Boston Office, No. 5 State Street. Omaha Office, 513 Fourteenth Street. San Francisco Office, 2 New Montgomery Street. Chicago Ticket Offices: 62 Clark Street, under Sherman House; 75 Canal, corner Madison Street; Kinzie Street Depot, corner West Kinzie and Canal Streets; Wells Street Depot, corner Wells and Kinzie Streets. For rates or information not obtainable from your home ticket agents, apply to

W. H. STENNETT,
 Gen'l Pass. Agent, Chicago.

MARVIN HUGHITT,
 Gen'l Manager, Chicago.

POLAND SPRING HOUSE,

SEASON OF 1879.



Will be Opened for the Reception of Guests, June 12.

RICKER & YOUNG, Proprietors,
SOUTH POLAND, ME. [Over]

ERN

ed,
THE

WEST.

"Chicago, Council Bluffs & California Line,"
"Chicago, Sioux City & Yankton Line,"
"Chicago, Clinton, Dubuque & La Crosse Line,"

een
Hotel Cars,
DRAWING
SOUTH LINE
Chicago and

Michigan
& Chi-
and with
WEST.
Close
acts over
Canadas.
Railway,

e Street.
Montgomery
ouse; 75
nle and
For rates

Chicago.

POLAND SPRING HOUSE.

This large and commodious Hotel is situated at the celebrated Poland Mineral Spring, Maine, and on an elevation eight hundred feet above the level of the sea, commanding the most beautiful landscape scenery in New England; has a frontage of 262 feet, looking North, West, and Northwest; and has 123 sleeping-rooms. Many of the rooms are in suits for the accommodation of families and parties, and each room is brought in communication with the Office by means of the Electrical Annunciator. The whole house is lighted by Gas made from Gasoline with a Springfield Gas Machine.

The Poland Spring Water is forced into three stories of the Hotel by a Steam-Pump, which is set in the Barrelling-house at the Spring, through an enameled iron pipe; and in the second story of the Hotel there are three Bath-rooms, where hot and cold baths can be had in the Spring Water.

Tourists and invalids, traveling for pleasure or health, will find the Poland Spring one of the most attractive spots in New England for romantic scenery, hunting, fishing, &c.

From the front of the Hotel can be seen three beautiful Lakes of Water, at one mile's distance, where there is very fine boating and fishing; and the large Lake Sebago in the distance; and a most beautiful mountain scenery, including Mt. Washington, Mt. Kearsarge, and the Pleasant Mountains, with the Hotels on them. On the East is a beautiful scenery, including the City of Lewiston. On the South is a large Pine and Oak Grove within 300 feet of the House. This Hotel has 450 feet of broad piazza.

Invalids will find the Poland Mineral Spring Water the most efficacious Mineral-water in the world, and a sure cure for Bright's Disease of the Kidneys, Stone in the Bladder and Kidneys, Liver Complaint, Dropsy, Salt-Rheum, Scrofula-Humors, and all Diseases of the Urinary Organs; it has no equal.

The Spring and Hotel is thirty miles North of Portland, on the Grand Trunk Railway. Guests can reach this Hotel from Boston, via Boston & Maine Railroad, on the morning and noon trains; also from Portland, via Grand Trunk Railway, on the morning, noon, and evening trains. Station, LEWISTON JUNCTION, where a coach connects with every train to take guests 3½ miles to the Poland Spring House.

Price, "by the week," from \$12 to \$16, until the 20th of July, then from \$14 to \$20 per week. Transient, \$3 per day.

The proprietors will endeavor to look to the comfort of the guests, and merit their patronage.

Those who desire information in regard to rooms and prices will address

RICKER & YOUNG, PROPRIETORS,

South Poland, Maine.

USE.

the celebrated
eight hundred
most beautiful
262 feet, looking
rooms. Many of
dances and parties,
Office by means
powered by Gas made

rooms of the Hotel
at the Spring,
rooms of the Hotel
can be had in

rooms, will find the
New England for

Beautiful Lakes of
fine boating and
and a most beau-
tiful Kearsarge, and
to the East is a
to the South is a
fine. This Hotel

the most effi-
cient for Bright's Disease
Liver Complaint,
and of the Urinary

Portland, on the
from Boston, via
trains; also from
Boston, and evening
coach connects
Spring House.
from the 1st of July, then

at the expense of the guests,

and prices will

PROPRIETORS,

Poland, Maine.

ROCK ISLAND ROUTE.



Palace Sleeping Cars for Sleeping purposes only, and Dining and Restaurant Cars for Eating purposes.

Seventy-Five Cents pays for an Entire Meal. Do not count these Cars with a Hotel Car.

THE CHICAGO, ROCK ISLAND & PACIFIC R. R.

Between CHICAGO and COUNCIL BLUFFS and OKLAHA, connecting at Chicago with Railroads for all points East and South, and at Council Bluffs in Union Depot, with the Union Pacific R. R. and Burlington & Missouri River R. R. in Nebraska. This is

THE ONLY COMPANY THAT OWNS AND OPERATES A THROUGH LINE BETWEEN CHICAGO AND KANSAS

Connecting at Cameron with Hannibal & St. Joseph R. R. and in Union Depot at Beverly with Kansas City, St. Joe & Council Bluffs R. R.; at Atchison with Atchison, Topeka & Santa Fe, Atchison & Nebraska, and Central Branch Union Pacific Railroads; at Leavenworth with Kansas Pacific, Kansas Central, and Missouri Pacific Railroads.

A. KIMBALL, Gen'l Supt.

E. ST. JOHN, Gen'l Trk. and Pass. Agt., Chicago.

THE DIRECT AND POPULAR ROUTE FOR ALL POINTS IN

Kansas, Colorado, New Mexico, Utah, Montana, California and Oregon.

W. H. JENNEY, New England Passenger Agent, 240 Washington St., Boston, Mass.

