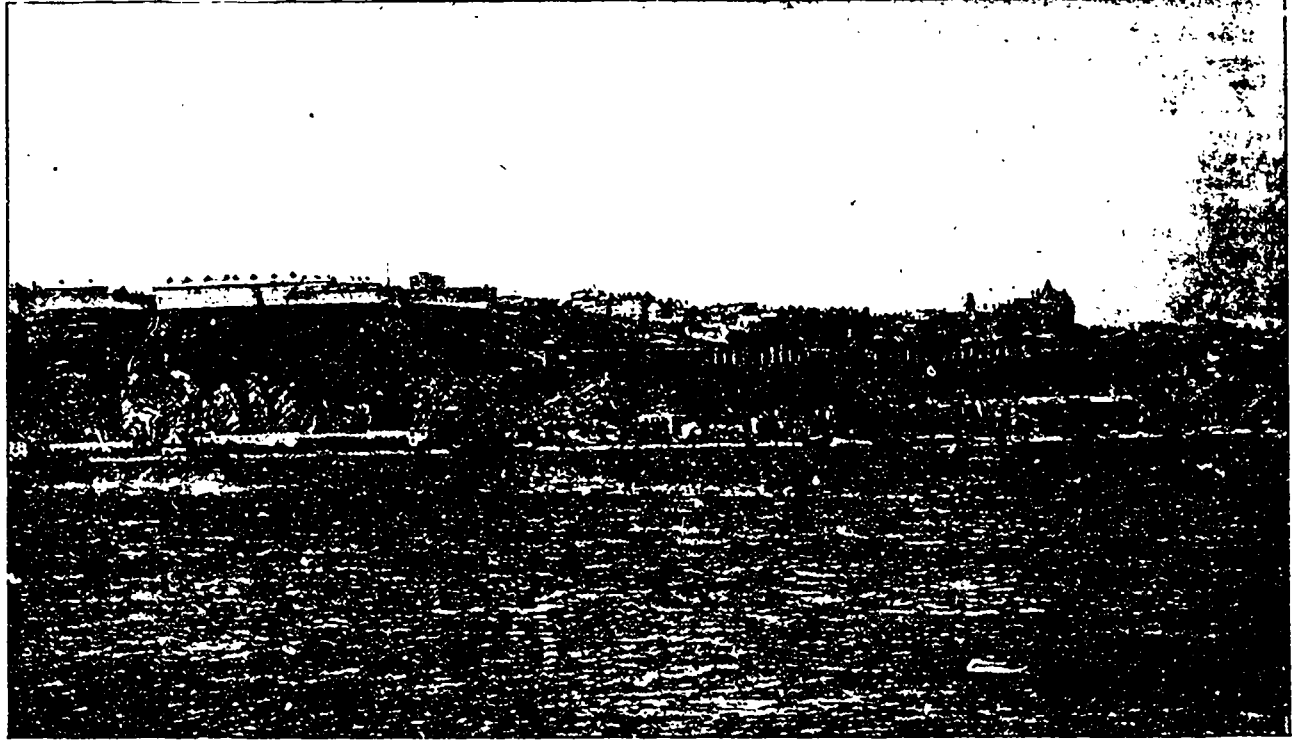


MARCH,  
1895.

# PICTURESQUE

# Quebec.



QUEBEC CITY, FROM QUEBEC CENTRAL RAILWAY TRAIN, LEVIS.

AN OFFICIAL ORGAN OF THE  
 QUEBEC CENTRAL RY  
 AND  
 QUEBEC & LAKE ST. JOHN RY COMPANIES

## Haunts of the Ouananiche.

**A**WAY to the north, nearly two-thirds of the distance from New York to Hudson's Bay, lies the home of the Ouananiche, the weird and picturesque Lako St. John and its tributary waters.

If you draw two straight lines to the North Pole over the face of the map, one from New York and the other from Boston, they will form the westerly and easterly boundaries of the only territory in which you need expect to find a Ouananiche. To the south and to the north, this sportsman's paradise is bounded by the forty-eighth and forty-ninth parallels, respectively, of north latitude. How do you get there? No wonder you ask this question, for up to a year or two ago the only means of communication between this vast territory and civilization was a long Indian pathway, blazed through the woods, or by water-ways traversed by the inevitable bark canoe. Now, the mysterious inland sea that the Indians call Pikouagami, and that we know as Lake St. John, is reached by a daily parlor car service that runs through to the northern terminus of one of the most northerly railways in America, nearly two hundred miles in length, through the wild mountain fastnesses and primeval forests that fill in almost the whole of the intervening country between the old city of Quebec and the home of the Ouananiche.

At Roberval, the present northerly terminus of the Quebec & Lake St. John Railway, on the westerly side of the lake, passenger trains arrive and leave the station immediately fronting the hotel Roberval. This hotel has been, of late, so extended and improved, that it is now one of the most commodious in Canada. It has a frontage of 180 feet, overlooking the lake, has two wings, each one hundred feet long, and has accommodation for 300 guests. It is supplied with billiard room, bowling alley and a promenade and concert hall, and its dining room measures seventy by thirty-five feet. The bedrooms are all large, comfortable and well ventilated, several being *en suite*, while almost every room in the house commands a magnificent view of the lake and surrounding country. The cuisine is unsurpassed, being under the supervision of a competent French chef. The out-door attractions are lawn tennis, croquet, fishing, bathing, boating, and driving. The house is supplied with hot and cold water and electric light throughout, the grounds being illuminated in like manner.

No apology need be offered for the space devoted to a description of the hotel Roberval, for it is not only one of the handsomest and best kept hostleries in Canada, but is the necessary headquarters of all tourists visiting Lake St. John and the surrounding territory, and of all fishermen bent on the capture of the gamy Ouananiche. The view of the lake from the windows of the hotel is quite sea-like, and except in the clearest weather, the vision fails to reach the opposite shore, though in the vicinity of the Grand Discharge, it is marked by lofty mamelons or mounds of white sand. The breadth of this inland sea at this point is 25 miles, and its greatest length from north to south is 28 miles. It has an area of 700 square miles and is 85 miles in circumference.

Immediately in front of the hotel Roberval, and along the Roberval shore, is to be had the earliest Ouananiche fishing of the season.

It usually dates from the first week of June, while the more exciting sport of fighting these land-locked salmon in the seething rapids of the Grand Discharge may be had from the 15th of June to the 10th of September. These rapids are formed by the action of Lako St. John in pouring its surplus waters into the marvellous Saguenay, and continue with brief interruptions to Chicoutimi, forty miles distant, and the head of steamboat navigation. On a beautifully wooded island at the head of the rapids of the Grand Discharge, twenty-five miles straight across the lake from Roberval, and under the same manage-

(Continued on page 3).

## ROYAL PULP & PAPER CO.,

One of the largest and finest mills in Canada.

MAKES ALL KINDS OF PAPER AND CHEMICAL PULP.

Works at East Angus, P. Q. Warehouse, 15 Victoria Square, Montreal.

F. P. BUCK, President and General Manager.

## J. S. Mitchell & Co. —Successors to— Lucko & Mitchell

Iron & Hardware Merchants,

Mining and Mill Supplies, Black Diamond Drill Steel, Gunpowder & Dynamite. IMPORTERS OF ANTHRACITE AND BITUMINOUS COAL, FINE CHINA, ART POTTERY, STEELING SILVER. Carriage-makers' and Blacksmiths' Stock, Paints, Oils & Varnishes.

69 AND 71 WELLINGTON STREET, SHERBROOKE.

## THE BON-TON 13 & 15 COMMERCIAL SQUARE, SHERBROOKE.

—DRY GOODS—

MILLINERY, MANTLES, BOYS' CLOTHING, MEN'S FURNISHINGS, FINE FURS.

ONE PRICE ONLY.

CHAMBERLAIN & LORANGER.

H. M. TOMLINSON,

RULER,

Blank Book Manufacturer and  
BOOKBINDER,  
SHERBROOKE, P. Q.

R. F. SMITH,

Montreal Photo Supply

101 ST. FRANCOIS XAVIER—101  
Corner Notre Dame.

KODAKS

JNO. MILFORD & SON

FLORISTS

A general assortment of Flowers, Greenhouse and Bedding Plants, Landscape Gardening, etc. Cut Flowers, and Floral Designs a specialty. Orders by mail or telephone promptly attended to.

JOHN MILFORD & SON,  
SHERBROOKE, - P. Q.

## DOMINION LIME CO'Y,

Makes the Strongest, Purest and Best Lime in the World.

Works - Dudswell, P. Q.

F. P. BUCK, Manager and Treasurer,  
Sherbrooke, P. Q.

## STILL IN THE LEAD

"El Presidente" and "Queen," 10c.

"Dutch Mike," 5c. Best Cigars in the Market.

## D. G. LOOMIS & SONS,

BRICKMAKERS, BUILDERS, R.R. CONTRACTORS. Dealers in Portland Cement, Fire Clay and Fire Brick, Hair, Lino, Sand and Stone. Fancy and Reprassed Brick made to order. SHERBROOKE, P. Q.

## LEBARON'S Music Parlors

SHERBROOKE,

THE LEADING MUSICAL ESTABLISHMENT IN THE TOWNSHIPS.

GERHARD HEINTZMAN PIANOS, STRICTLY HIGH GRADE.

## A. L. GRINDROD & CO.,

—MANUFACTURERS OF—

CLOTH, TWEED, FLANNEL & YARN FROM CANADIAN WOOL,

Toutes sortes d'ouvrages de pratique faites a ordre.

Toute Laine Cardée, Filée et Foulée, et manufacturée pour pratique, &c. Sherbrooke, P. Q.

## McCaskill, Dougall & Co.

MONTREAL, MANUFACTURERS OF

Fine Railway, Carriage & Coach VARNISHES AND JAPANS Supplied to the leading Railways

Five Silver and One Gold Medals awarded.



# Picturesque Quebec,

AN ILLUSTRATED MONTHLY JOURNAL PRINTED AND PUBLISHED EVERY MONTH BY G. H. BRADFORD, AT SHERBROOKE, P.Q.

The Official Organ of the Quebec Central and Quebec & Lake St. John Railways.

No less than 5,000 copies of this Journal are distributed each month by the Quebec Central and Quebec & Lake St. John Railway Companies and on all connecting roads. Also, will be given out at all hotels, and will be mailed regularly to all subscribers for one dollar a year postage free.

ADVERTISING RATES MADE KNOWN ON APPLICATION.

Address all communications to PICTURESQUE QUEBEC, care QUEBEC CENTRAL RAILWAY COMPANY, Sherbrooke P.Q.

All notices in local column and changes in advertising cards for this publication must be sent in on or before the 15th of each month, as we go to press on the 20th for the following month.

VOL. I. MARCH, 1895. No. 8

## QUEBEC CENTRAL RAILROAD.

GENERAL OFFICES LOCATED AT SHERBROOKE.

FRANK GRUNDY,	General Manager.
A. STEELE,	Superintendent.
J. H. WALSH,	General Freight and Passenger Agent.
A. H. ANDERSON,	Cashier.
T. J. MAGUIRE,	Accountant.
E. BERRYMAN,	Chief Engineer.
P. R. NEILL,	Traveling Passenger Agent.

Room 3, Western Division Station, B. & M. R.R., Boston.

## QUEBEC & LAKE ST. JOHN RAILROAD.

GENERAL OFFICES LOCATED AT QUEBEC.

FRANK ROSS,	President.
E. BEAUDLET,	1st Vice-President.
S. PETERS,	2nd Vice-President.
J. G. SCOTT,	Secretary and Manager.
ALEX. HARDY,	General Passenger Agent.
R. M. STOCKING,	City Ticket Agent.
E. A. HOARE,	Chief Engineer.

Time-Tables of the above roads, as well as all connections, will be found in these columns.

Population of principal cities, also stage connections.

Distances to different points. Rates of Fare to all Stations.

Rates of Fare to all Southern and Western points, including principal cities of New England. All changes in Railroad matters.

A Map showing Railroad lines and connections. Special information.

We would call your attention to our representative business firms, whose cards appear in the columns of this paper. Any one purchasing will do well to call on them and promote home industries.

To Friends of the Quebec Central and Quebec and Lake St. John Railways:

Your attention is called to the fact that "Picturesque Quebec" will be mailed regularly to any address for one year on receipt of One Dollar, it being understood that the subscription list is so many copies being issued each month over the five thousand.

You must remember the expense of mailing to the many who request them compels us to make this charge. It will be worth a dollar a year to you. Don't wait. We have already received a large number of names. Send in your subscriptions and show us that you appreciate what we are doing to boom this beautiful Province of Quebec.

ment, is the Island House. It has a westerly aspect, and commands a splendid view of the Lake and Islands of the Grand Decharge. For richness of coloring in natural scenery, there is scarcely anything to compare with the view of the setting sun over Lake St. John as seen from the Island House, unless it be the rising sun as seen across the same body of water from the Hotel Roberval.

When the proprietor of these Hotels returned from Europe in 1889, he found that the fishing privileges in this vast territory had been leased from the Government and were controlled by private individuals.

Tourists and anglers were being imposed upon on every hand, as high as \$5 per day being charged for a single rod. After consulting with representative sporting men from New York, Boston, Philadelphia, Brooklyn, Springfield, Washington and other large cities, who were guests at his hotels, the proprietor put himself in communication with the Provincial Government, and ascertained that the leases expired in the spring of that year, and with characteristic American enterprise, at once concluded arrangements with the Government to give him the exclusive fishing rights of Lake St. John and its tributaries, embracing an area of over 20,000 square miles. These valuable waters are all thrown freely open to the guests of the hotels, no charge being made for fishing rights, directly or indirectly.

So that the payment of regular hotel rates, "from \$3.00 to \$5.00 per day, according to location of rooms required," secures to the sporting fraternity of the United States, Canada and Europe the privileges of the grandest fishing waters of North America. These houses are both under the superintendency of Mr. T. Kenna, late of the West Brighton. Three steamers are run upon the lake in connection with these hotels and fishing grounds, namely, "Perribouca," "Undino" and "Mistassini."

The latter is a perfectly new boat, staunch and fleet, capable of accommodating 400 passengers, and will make daily trips across the lake during the tourist season, between Hotel Roberval and Island House, covering the distance of twenty-five miles in one hour and a half.

The steamer is admirably furnished and equipped with everything necessary for the comfort of passengers, and especially of that of the ladies.

(To be continued.)

## GRIFFITH'S DRUG STORE.

HAS ONE OF THE LARGEST STOCKS OF

DRUGS, PATENT MEDICINES & PHOTOGRAPHIC GOODS IN THE CITY

Having only competent Clerks, you are invited to call when desirous of having your Prescriptions filled with care and neatness.

Don't forget the place, - 121 Wellington St., Sherbrooke

## D. McMANAMY & CO.,

IMPORTERS

WINES AND LIQUORS

SOLE AGENTS IN THE TOWNSHIP FOR  
MELCHERS "ELEPHANT" GINS, "HONEYSUCKLE," &c. WHOLESALE ONLY.  
SHERBROOKE, P. Q.

## \* THOMAS + SONNE, \*

Manufacturer of

AWNINGS, TENTS, SAILS,

And Flags of All Nations, Waggon Covers, Horse Covers, Inside Spring Roller Shades, All kinds of Tents on Hire, Tarpaulins and Oil-Skin Clothing, Hoist Ropes Fitted up at Shortest Notice, Cheap Fire Escape.

193 COMMISSIONERS STREET, Cor. St. Sulpice, - MONTREAL.

Telephone 1161

## TRUTH AND POETRY COMBINED.

For advertising business of every style and kind  
In the PICTURESQUE QUEBEC you space can surely find.  
For a neat, attractive journal we quote the lowest rate,  
And a large amount we guarantee to freely circulate.  
We give the running time of the Q. C. R., which does from Sherbrooke run,  
And little spicy reading—to read it will be fun.  
We advertise the rates of fares on Q. C. R. to all the stations,  
And give the distance, as well as the population.  
We tell you where you will find the BEST HOTELS for feed,  
And lots of other matter 'twill do you good to read.  
In Sherbrooke, care of Q. C. R., our office you can find,  
Where we prove to all we have a sheet that don't get left behind.  
For information and jokes you can take your pick,  
We will allow no flies to linger on PICTURESQUE QUEBEC.

Try it for Dyspepsia.

**CHEWING GUM**

**C. R. SOMERVILLE**

*Mexican Fruit Chewing Gum*

**36 BARS 180 PIECES MEXICAN FRUIT**

**LONDON CANADA**

ASK Newsagents for it on Trains

Smoke **'ABERDEEN'** Smoke

—The Leading TEN CENT Cigar in Canada.—

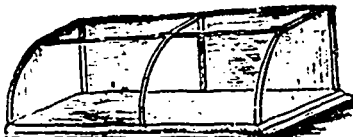
BLACKSTONE CIGAR FACTORY, - - MONTREAL

**The Canada Plating Company,**

763 CRAIG STREET, MONTREAL.

Are recognized as the leading Repairers and Replaters of old work in Canada.

SEND YOUR WORK TO US.



**Montreal Show Case Co.**

A. T. EARL, PROP.

Manufacturers of **SHOW CASES**

In Nickel, Silver, Walnut, Cherry, Ebony and Mahogany

750 & 752 Craig St., Montreal.

**B. HUGMAN & SONS,**

MAKERS OF

**STORE & HOUSE SHADES**

— SIGNS —

TELEPHONE 173. 1864 Notre Dame street, MONTREAL.

**FORTIFY YOUR SYSTEM**

— AGAINST —

**— PNEUMONIA, LA GRIPPE AND CONSUMPTION —**

— BY USING —

**ROYAL EMULSION**

For Obstinate Cough, Acute or Chronic Bronchitis, all Throat and Lung Troubles IT HAS NEVER BEEN EQUALED.

A WORLD-RENOUNDED PHYSICIAN says— I am convinced that Royal Emulsion is the most potent as well as the most palatable Emulsion of Cod Liver Oil ever introduced to the medical world in cases of an exhaustible nature, and in Tubercular and the various forms of Strumous disease.

SOLD BY ALL DRUGGISTS. 50c. and \$1.00.

WALLACE DAWSON, CHEMIST. - - MONTREAL.

**G.W. Dawson**  
MANUFACTURER OF  
**RUBBER STAMPS**  
LETTER AND FIGURE MATRICES  
BRASS RUBBER STAMPS AND  
DIES OF EVERY DESCRIPTION  
747 CRAIG ST. MONTREAL

**CODERE . . . .**  
**THE JEWELER**

Deals in Diamonds, Gold and Silver Watches.  
Corner of King and Wellington Streets,  
Opposite the Continental Hotel,  
SHERBROOKE, P. Q.

**MEN**

suffering from diseases resulting from excesses and errors of youth, do not despair. You can be cured by the use of **PROF. HUBERT'S RESTORATIVE REMEDY**. Write for circular to **PROF. HUBERT, Box 578, West Orléans, Montreal.**  
Correspondence strictly confidential.

**HENRY VEILLEUX,**  
FASHIONABLE TAILOR,  
Repairing and Cleaning done at short notice.  
175 Wellington St., Sherbrooke, Que.

**GEO. AYER,**  
DEALER IN  
Marble and Granite Headstones  
And all kinds of Monumental Work, Posts, Curbing, etc. I am handling the popular Granites that are in use in this country.  
Office and Works, Opposite the Market,  
SHERBROOKE, P. Q.

**S. TWOSE,**  
UNDERTAKER  
and Furniture Manufacturer,  
97 WELLINGTON ST., - SHERBROOKE.  
Our establishment is the oldest in Sherbrooke, and visitors are invited to call and see our stock of Furniture. The most complete in the city.

**When in Sherbrooke**  
CALL FOR  
**E. BATT** THE CABMAN.  
Sherbrooke Telephone connection. Bell Tel. No. 58  
Orders for any part of the city attended to.  
First-class Hack

**THE STANDARD DRAIN PIPE CO.,**



ST. JOHNS, P. Q. LIMITED.

Manufacturers of Salt-Glazed Vitrified Sewer Pipes, Railway Culvert Pipes, Inverts, Chimney Tops, and all kinds of Fire Clay Goods. A special line of good Seconds on hand, suitable for Street Drains and Crossings, Farm Crossings, etc. Cheaper than wood, and will practically last for ever. Send for catalogue and prices.



**TOILETS,** Basins, Urinals, etc., in white and decorated, made from best quality of imported English Clays, and manufactured on the English plan. We guarantee satisfaction in every way equal to imported goods. Our lines include the leading English and American patterns, and are in the hands of jobbers from Halifax to Victoria.

The attention of Architects and Plumbers throughout the Dominion is invited to our goods.

SEND FOR CATALOGUES.  
**ST. JOHNS STONE**  
**CEMENTWARE CO.,**  
ST. JOHNS P. Q.

**THE "LILY."**

We most respectfully beg to draw the attention of Architects, Sanitary Engineers, Plumbers, Jobbers and others in the Sanitary Earthenware line to the above closet, manufactured in Plain and Embossed styles. The embossing of this Closet is most artistic and natural, and it has been pronounced by the trade that we have placed upon the market a most handsome, and at the same time inexpensive Closet, one that has never been offered before at its price, and experts even go so far as to say that it will displace any closet of its class now offered to the trade. The action of this closet is most perfect. One trial is sufficient to endorse this opinion.

**CAMPBELL & PURVIS,** { Sole Manufacturers of the } ST. JOHNS, P. Q.  
above Closet.

**DOMINION STEAM LAUNDRY**

HEAD OFFICE  
2489 NOTRE DAME ST. WEST  
TELEPHONE 1554 & 8275

CENTRAL OFFICE  
19 BLEURY STREET

**P.W. HUGT,**  
MANAGER

**The "Eagle" Foundry**



No. 34 Craig Street, MONTREAL.

**GEORGE BRUSH**

Manufacturer of Steam Engines, Boilers, Elevators, Shingle and Bark Mills, Speciales - Blake's Challenge Stone Breaker, Heine Safety Steam Engines.

**OLD DR. OSBORN'S REMEDY FOR MEN.**

127 lbs BEGINNING	134 lbs FIRST MONTH	147 lbs SECOND MONTH
165 lbs THIRD MONTH		

**CURES POSITIVELY** Lost Power, Nervous Debility, Failing Manhood, Secret Diseases, Caused by the errors and excesses of youth. Young, middle-aged or old men, suffering from the effects of follies and excesses, restored to health, manhood and vigor.  
Price \$1.00, 6 boxes for \$5.00  
Sent by mail, securely sealed. Write for our book, "Startling Facts," for Men only, tells you how to get well and stay well.

Address, **QUEEN MEDICINE CO., 2, MONTREAL.**  
For sale by **John T. Lyons, cor. Craig and Bleury street Montreal.**

# L. A. BAYLEY,

IMPORTER OF

**Fine Dress Fabrics,  
Mantles and Kid Gloves  
Carpets & Oil Cloths.**

(Samples on application)

Orders by Mail executed with care and dispatch.

**SHERBROOKE, P. Q.**

## BALLENTYNE, JOHNSTON & CO.

EVERYTHING IN GROCERIES.

SHERBROOKE, QUE.

Write for Prices.

Office Established 1875.

**W. S. DRESSER & CO.**  
FIRE, - LIFE - AND - ACCIDENT  
**INSURANCE.**

20 Market Square - SHERBROOKE, QUE.

**WHEN YOU HAVE A BIRTHDAY PARTY**  
or want a Wedding Cake  
go to **THOMPSON & McLEAN**  
Wholesale and Retail.  
Ice Cream and Soda Parlors  
Choice Confectionery and Fruits. Orders  
by mail or Telephone promptly attended to.  
Tel. 1103-1104.

**G. H. PRESBY,**  
Photographic  
Artist.

Fine Photographs a specialty.  
Copying of all kinds done to order.  
111 Wellington street, Sherbrooke.

**SHERBROOKE**  
**Steam Laundry**  
48 Factory Street, Sherbrooke.

**W. B. NEIL,** PROPRIETOR.  
Highest grade of work guaranteed.

Now, boys, said the superintendent,  
what shall I talk about? Talk about  
a minute, exclaimed the bad boy of  
the school.

Landlady—How do you like the  
butter Mr Bingster? Bingster (the  
now boarder)—I can tell better ma-  
dam, after we have known each other  
longer.

**LADIES SAY SO**

AND IT IS SO.

THE BEST is the Coquine

**COOK'S FRIEND**  
BAKING POWDER.

N. T. DUSSAULT. L. H. ST. JEAN  
ESTABLISHED 1854.

**DUSSAULT & ST-JEAN**

Merchant Tailors,

Osell's Block, opp. Market, Wellington Street,  
SHERBROOKE, P. Q.

**WHEN IN SHERBROOKE**  
AND WANT A  
**GOOD SMOKE**

CALL AT  
**H. FORTIER'S** for Imported and  
113 Wellington Street. Domestic Goods.

I set four pies out on the window-  
sill to cool, said Mrs. Hunker to her  
husband, and they have all been  
stolen. Then we must number them  
among the lost tarts, was the reply.

An Old Colony man is so rigid in  
his temperance views that he will not  
carry an umbrella when it rains, be-  
cause there is a stick in it.

### TWO MASCULINE GIRLS.

Speculations About Them by the Other  
Passengers in the Car.

It was their brief, uncrinolined dress  
skirts that drew the eyes of the up to  
date girl. A messenger boy tried to fig-  
ure out how their hair staid up with  
nothing so feminine as hairpins in evi-  
dence. The manlike cuffs peeping above  
the dogskin gloves attracted the atten-  
tion of a business man, while a dudo  
started as he caught sight of their well  
built boots. Even the conductor stared  
hard at them.

One of the girls was not so far gone  
in her masculinity as the other. The  
twist of velvet in her hat showed a lin-  
gering leaning toward the feminine, but  
the eyeglasses, the umbrella and the  
armful of books were common to both.  
All unconscious of the interest they in-  
spired, the two buried themselves in  
their notebooks. The more masculine  
planted her feet well apart and used her  
knees as an umbrella rack. This didn't  
enhance the grace of her abbreviated  
dress skirt. Every now and then she  
flourished a liberal handkerchief that  
was a curious contrast to the lacy shred  
tucked into the up to date girl's card-  
case. "Who and what were they any-  
way?" the passengers asked themselves.  
"Women suffragists," thought the  
business man.

"Some of those dreadfully strong  
minded creatures that want to vote,"  
said the up to date girl to herself.

"Jingo! All they need is trousers,"  
was the mental remark of the messenger  
boy, while the dudo's feeble brain regis-  
tered some such impressions as these:  
"Aw—I've heard of such—aw—women,  
dontcherknow—baa, thank goodness,  
I've never—aw—never weally seen one  
—aw—met!"

Just here the more masculine girl  
looked up from her notebook.

"Do ye... think disintegration in  
typhus possible?" she asked her compan-  
ion in loud, clear tones.

"Why, yes," replied the other. "If  
we accept the globular theory, you  
know."

The mystery was solved. They were  
medical students. All the other passen-  
gers drew a sigh of relief, except the  
dudo. He had vanished into thin air.—  
New York Sun.

Mrs. Gotthere—My dear, pardon my  
frankness, but really I fear your daugh-  
ter can never be a social success.

Mrs. Owtyside—W'—?

Mrs. G.—Well, she has no—no  
ap'omb at all.

Mrs. O.—Is that all? She shall have  
one. Me and John will spare no expense  
with Molhe. She shall have the best  
article of ap—whatever it is—that can  
be had.—Pittsburg Post-Ex.

### UNTIL DEATH.

Make me no vows of constancy, my friend,  
To love me, though I die, the whole life-long.  
And love no other till thy days shall end—  
Nay, it were rash and wrong.

It would not make me sleep more peacefully  
That thou wert wasting all thy life in woo  
For my poor sake. What love thou hast for me  
Bestow it ere I go!

Carve not upon a stone when I am dead  
The praises which remorseful mourners give  
To women's graves—a tardy recompense—  
But speak them while I live.

Heap not the heavy marble on my head  
To shut away the sunshine and the dew.  
Let small blooms grow there, and let grasses  
wave,  
And raindrops filter through.

Thou wilt meet many fairer and more gay  
Than I; but, trust me, thou canst never find  
One who will love and serve thee night and day  
With a more single mind.

Forget me when I die! The violets  
Above my rest will blossom just as blue,  
Nor miss thy tears—O'en Nature's self forgets,  
But while I live be true!

### Plan For Second Class Cars.

William Gates, the veteran ticket  
agent, is of the opinion that America  
could profit by adopting at least one  
feature of European railway service. "I  
believe that we would secure a large  
amount of travel which we do not now  
secure by adopting the second class fea-  
ture," said he. "The luxurious manner  
in which our large sleepers and chair  
cars are constructed involves an enor-  
mous expense. The fellows who do not  
use these cars are obliged to pay for the  
luxuries enjoyed by wealthier travelers.  
The companies are obliged to charge a  
uniformly high rate of mileage in order  
to furnish swell service. I advocate hav-  
ing a strictly second class train between  
here and New York. Put the price at  
\$10. I am positive that it would greatly  
increase travel. Put it on a slow sched-  
ule. The people who patronize it would  
not expect 'flier' service, and as long as  
it carried them over the ground they  
would be satisfied. The train would be  
well patronized from this station. Then  
the first class trains could be made  
strictly first class, and each fellow would  
pay for the service he required. I would  
like to see it tried."—Toledo Blade.

As two men were looking from an  
office window on G—street the  
other morning a shriveled up old fellow  
passed by.

"See that party?" said one. "Well,  
he's the meanest man in the state."

"Who is he, and why is he so mean?"

"He's a lawyer in one of the interior  
towns where they have hobtail cars, and  
one day while he was riding up town a  
lame man on the car gave him a dime  
and asked him to pay his fare for him.  
He did as requested and then wanted to  
keep the other nickel as a fee for pro-  
fessional services."—Detroit Free Press.

## GRAINES DE SEMENCE.

GRAINE DE MEIL CANADIENNE, TREFLE ROUGE, BLANC & ALSYKE,  
BLÉ ROUGE & BLANC MANITOBA, LENTILLES, BLÉ D'INDE.

SPECIALITE d'Importation de Graines de Semence pour CERCLES AGRICOLES.

AUSSI, FARINES, LARD, POISSON, &c., &c.

J. B. REAUD & CIE., - 126 a 140 Rue St. Paul, QUEBEC.

--- MANUFACTURERS OF CIGARS AND TOBACCO. ---

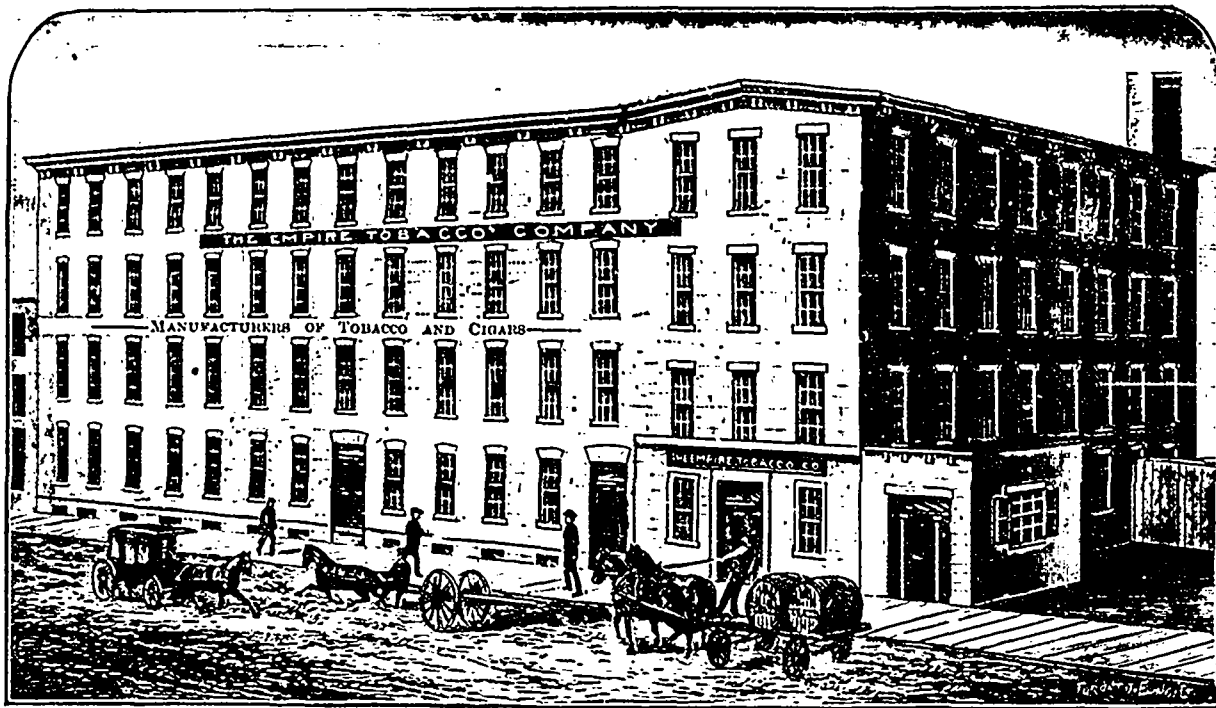
❦

**SMOKE** { Empire Cigar, - - 10c.  
 { Something Good Cigar, 5c.

❦

THAT SMOKERS appreciate a GOOD CIGAR is demonstrated by the enormous sale these Cigars have reached during the few Months they have been on the Market.

EMPIRE TOBACCO CO.



EMPIRE TOBACCO CO.

o — WE MANUFACTURE THE WELL-KNOWN — o

Something Good PLUG Smoking Tobacco.

Also Chewing Tobaccos of all kinds, including the famous "PATRIOT" Brand.

— OUR CIGARS FOR SALE ON THIS TRAIN. —

**EMPIRE TOBACCO CO., - MONTREAL.**



**GAME LAWS.**  
PROVINCE OF QUEBEC.

**FISHING.**—Salmon (angling) from August 13 to February 1; the same (Restigouche River) Aug. 15 to May 1. Speckled trout (*Salmo fontinalis*) brook or river trout, from October 1 to April 30. Quanaiche, from September 15 to December 1. Large grey trout and lunge from October 15 to December 1. Pickerel (doté) from April 15 to May 15. Bass and maskinonge from 25 May to July 1. Whitefish, from November 10 to December 1.

**N.B.**—Augling by hand (with hook and line) is the only means permitted to be used for taking fish. (No person who is not domiciled in the province of Quebec can at any time fish in the lakes or rivers of this province, not actually under lease, without having previously obtained a permit from the Commissioner of Crown Lands. Such permit is valuable for a fishing season, and is not transferable.)

**HUNTING.**—Caribou, from February 1 to September 1. Deer, from January 1 to October 1.

**N.B.**—The hunting of moose, caribou, or deer, with dogs or by means of snares, traps, etc., is prohibited. No person (white man or Indian) has a right, during one season's hunting, to kill or take alive—unless he has previously obtained a permit from the Commissioner of Crown Lands for that purpose—more than 3 caribou and 4 deer. After the first ten days of the close season, all railroads and steam boat companies and public carriers are forbidden to carry the whole or any part (except the skin) of any moose, caribou, or deer without being authorized thereto by the Commissioner of Crown Lands.

Beaver, mink, otter, martin, pekan, from April 1 to November 1. Muskrat (only in the counties of Maskinonge, Yamaska, Richelieu, and Berthier), from May 1 to April 1 following. Woodcock, snipe, partridge of any kind, from February 1 to September 1. Black duck, teal, wild duck of any kind (except shel-drake and gull) from May to September 1. (And at any time of the year, between one hour after sunset and one hour before sunrise, and also to keep exposed during such prohibited hours, lures or decoys, etc.; guns of larger bore than No. 8 prohibited). Birds known as perchers, such as swallows, king-birds, warblers, fly-catchers, woodpeckers, whip-poor-wills, finches (song sparrows, redbirds, indigo birds, etc.), cow-buntings, tit-mice, goldfinches, grives (robins, wood-thrushes, etc.), kinglets, bobolinks, grackles, grossbeaks, humming-birds, cuckoos, owls, etc., except eagles, falcons, hawks, and other birds of the *Falconidae*, wild pigeons, kingfishers, crows, ravens, wax-wings (recollats), shrike, jays, magpies, sparrows, and starlings, from May 1 to September 1. To take nests or eggs of wild duck, teal, wild goose, or swan is prohibited.

**N.B.**—Fine of \$2 to \$100, or imprisonment in default of payment. No person who is not domiciled in the province of Quebec, nor in that of Ontario, can at any time hunt in this province without having previously obtained a license to that effect from the Commissioner of Crown Lands. Such permit is not transferable. The export of deer, wild turkeys, quail, and partridge in carcasses or parts thereof from the Dominion at any time is prohibited. Penalty, \$100 and forfeiture.

**••A. CARRIER••**  
**& FILS,**

IMPORTATEURS DE  
Groceries, Vins et Spiritueux,  
For, Clous, Vitres, Pointures, etc.  
*Fleur, Grains et Provisions,*  
121 Rue Commerciale, LEVIS, P. Q.

The best place in the Province of  
Quebec to buy Harness is at

**HENRY VERREAU'S,**  
SADDLER,  
73, 75 and 77 Commercial Street, - - - LEVIS,  
Manufacturer of all kinds of Light,  
Single and Double Harness, Working  
Harness, Saddles, Bridles, etc. Also,  
always in stock, Whips, Valises,  
Straps, Covers. An assortment of  
Sleigh Bells, and everything in this  
branch of trade.

Wholesale and Retail.  
Terms very moderate.

**QUEBEC GINGER ALE &**  
**SODA WATER WORKS**

**A. CRAWFORD, Jr.**

MANUFACTURER OF  
"Superior" Ginger Ale, Soda Water,  
Cream Soda, Champagne Cider,  
Ginger Beer, etc.

AND ALL KINDS OF SYRUPS.

**DISTANCES**

On Quebec and Lake St. John Railway.

The principal points in the Lake St. John  
and Saguenay districts, their population  
and approximate distance from Chambord  
Junction are as follows:

TO THE WEST.	MILES.	POPULATION.
St. Louis	1	1000
Roberval	13	2100
St. Prime	22	1100
St. Felicien	31	1000
St. Methode	36	300
Normandin and Albatrel	49	400
Peribonca	45	20
Mt-Tassin (Trappists)	53	100
TO THE EAST.		
St. Jerome	9	3000
St. Gedeon	17	1000
St. Bruno	20	200
St. Joseph d'Alma	23	1000
Hebertville	19	2500
St. Cyrille	33	400
Riv. aux Sables	43	1000
Chicoutimi	51	5000
St. Alphonse	55	1200
Bagotville	66	2100
N. D. de Laterrière	55	1000

The mileage of the railway and branch  
lines when completed will be as follows:

Main line—	MILES.
Quebec to Chambord Jet.	177
Chambord to Roberval completed	13
	190
Eastern Extension to Chicoutimi and	
St. Alphonse (51 miles completed)	70
La Tuque branch	30
St. Gabriel	10
Western extension to Temiscaming	400
Total	700

**QUEBEC AND LAKE ST. JOHN RAILWAY.**  
**SUBURBAN TRAINS.**

Special attention is given by the Company  
to encourage city families to reside at the  
different points along the line during the  
summer season. Trains are run at conven-  
ient hours for business men; commutation  
and periodical tickets are issued at very  
moderate rates, and holders to have  
their furniture and supplies transported  
free as baggage, viz.:

COMMUTATION AND PERIODICAL TICKETS  
For one, two or three months, to city fam-  
ilies living in the country in the summer,  
will be issued between 1st May and 31st Oc-  
tober, at the following rates:

Between QUEBEC and	One Month.	Two Months.	Three Months.	Single Trip.
Hedleyville	3 00	5 50	7 50	2 00
Beauport, Road Charlesbough and Charlesbough West.	6 00	10 00	12 00	3 00
Indian Lorette	1 00	7 00	9 00	2 40
Valcartier	6 00	11 00	11 00	4 00
St. Gabriel	7 00	12 00	16 00	6 00
St. Catherine and Lake St. Joseph	7 50	11 00	18 50	7 00
Lac-Sergeant	8 00	15 00	20 00	8 00
Bourg-Louis and St. Raymond	9 00	16 00	22 00	12 00
Riviere-a-Pierre Jet Beaudet	12 00	16 00	22 00	12 00
Lake Edward	12 00	16 00	22 00	12 00

These tickets, to be used by any member  
of the family named on the ticket, will be  
good between 1st May and 31st Oct. only.  
Excursion fare to Lake St. Joseph and re-  
turn by train leaving at 1.30 p.m. only on  
Tuesday and Saturday, 30 cents. These  
tickets not good to go on other trains.

**PARLOR AND SLEEPING CAR RATES**  
**DURING TOURIST SEASON.**

1 seat between Quebec & St. Raymond, 25c.  
Lake Edward, 30c.  
Lake St. John, 75c.  
Roberval and Chicoutimi, 50c.  
One sleeping berth to any point \$1.50  
24 seats and berths secured at R. M.  
Stocking's Office, opposite St. Louis Hotel,  
Quebec.

**A. G. ROUTIER**

Importer of English, French and  
American

Watches, Jewelry and  
Fancy Goods.

Repairing of every description neatly done.

Special Chateau Frontenac Spoon.

52 MOUNTAIN HILL, QUEBEC.

**R. G. BERRY,**  
**VETERINARY SURGEON**

AND DENTIST,  
11 & 13 Water St., Sherbrooke, Que.

A. W. TRACY, D.V.S., ASSISTANT.

**REAL ECONOMY.**

Do you want to practice economy?  
Buy  
the "L'Etoile,"  
Stove

Which since three years has been in use at Quebec  
and Montreal. Economizes 50 per cent of coal,  
and get double the degree of heat.

References—Thibault & Freres, Montreal;  
O. Raymond, book-binder, Montreal; James  
Clark, Esq., Montreal. Made and for sale by

**GEO. BROUSSEAU,**  
83 St. Paul street, Quebec.

**BOSWELL & BRO.**

Ale and Porter

**BREWERS.**

Anchor Brewery, Quebec.  
Telephone 127.

**WIGHT & CO.,**

MEDICAL HALL,  
ST. JOHNS, P. Q.

Proprietors of the Celebrated **BOURBON-  
RINE COUGH REMEDY**, the best Cough  
Medicine in the market. Also **COMPOUND  
ELIXIR BLACKBERRY ROOT**, sure cure for  
Diarthra and Dysentery.

**If You Want a TRUNK,  
BAG,**

or anything in line of  
**Saddlery or Hardware**

**S. FISHER & SONS,**

Importers, Wholesale and Retail,  
8 La Roque st., Upper Town Quebec. Tel. No. 623

**A. E. Vallerand**

AGENT DE MANUFACTURIER

Lampes et Appareils, Lustres,  
Verrieres, Poteries, Argentories,  
Huile Sunshine, Huile Charbon,  
Huiles et Graisses a Machine, Suif,  
Huile Noire, Coal Tar, Brais.

Specialite pour le Commerce de The.

Entrepot : 67 Rue Dalhousie,  
**QUEBEC**

**Carrier, Laine & Co.**



ALSO STOVES, PLOUGHS, TEA KETTLES & CAMP OVENS  
COMMERCIAL STREET, LEVIS, P.Q. NE. RAILWAY STN.

**J. A. BLAIS, COTE DU PASSAGE NO. 83, LEVIS, P.Q.**

MANUFACTURES THE BEST CIGARS TO BE FOUND IN THE EASTERN TOWNSHIPS,  
**Brands: OLD ANDY, LE GRAND CHEF,  
ROBIN HOOD, NANTICA.**

Call for them. Take no other. Got prices to trade before buying.

For First-Class Work  
— TRY THE —  
**AMERICAN STEAM LAUNDRY**  
41 Beaver Hall Hill,  
Tel. 435. MONTREAL  
McCARTHY & LECHE, Prop.

**CANADA Steam Laundry**  
Dye and Scouring Works  
G. LAFLEUR, PROPRIETOR.  
17 Elgin Street, QUEBEC.  
Work called for and delivered in 24 hours if  
required. Give me a trial.  
TELEPHONE 837.

**The Silver Truss**  
Is the Simplest, Easiest and Most  
Efficient Truss known.

FRONT BACK

**THE MONTREAL SILVER TRUSS CO.** Rooms 6,  
1st Floor  
160 St. James St., Montreal.  
A Specialist always in attendance without  
extra charge.

**MONTREAL BUSINESS FIRMS.**

BRANCHES: TORONTO & WINNIPEG. CAPITAL, \$1,500,000.

**The Canadian Rubber Co.** of Montreal,  
MANUFACTURERS OF

Rubber Boots and Shoes, Belting, Hose, Packing  
Carriage Goods, Clothing, &c., &c.

333 AND 335 ST. PAUL ST. - - MONTREAL.

**J. & H. TAYLOR,** 751 Craig Street, Montreal

STEEL RAILS,  
SAFETY TRACK  
APPLIANCES,  
GRADING TOOLS

Steel Tires, Tubes, Pop Valves, and Gauges, Nathan's Loco.  
Lubricators, U. S. Metallic Packing, Damascus Bronze In-  
gots for bearings, Smith's Triple Exhaust Pipe, Leach's  
Loco. Sand Feeder, Talor's Foundry Moulding Machine,  
Steam and Hydraulic Pipe, Fittings, and Valves.

**ATLAS**

**ASSURANCE CO.**

FOUNDED IN 1808.

INCOME for 1893,  
**\$2,706,475.**

ASSETS, Dec. 31, 1893,  
**\$9,891,250.**

CANADIAN BRANCH:  
1735 Notre Dame St., Montreal.

**MATTHEW C. HINSHAW,**  
BRANCH MANAGER.

**The Sabiston Litho.**

and Publishing Co., MONTREAL.  
Lithographers and Color-Printers,  
Bookbinders and Publishers.

Manufacturers and dealers in Playing Cards and  
Photo Mounts. SPECIALTIES Show Cards, Post  
ers, Map Engraving Bonds Commercial Print  
ing, Embossed Show Cards, Bookbinding, etc.

ESTABLISHED 1857.

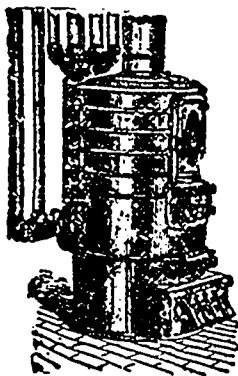
**Hearn & Harrison**



1640 and 1642 Notre Dame St.  
MONTREAL.

OPTICAL, MATHEMATICAL AND  
SURVEYING INSTRUMENTS.

MAGIC LANTERNS  
Photographic Cameras and Supplies.  
Nautical and Philosophical Instrument.  
CATALOGUES FREE ON APPLICATION.  
Telephone 2901.



**GURNEY, MASSEY COMPANY LTD.**

WHOLESALE MANUFACTURERS OF

HOT WATER HEATERS, PLUMBERS' SUPPLIES,  
HOT-AIR FURNACES, LOCKS AND SCALES,  
RADIATORS, REGISTERS, GAS STOVES,  
STEEL RANGES, OIL GAS STOVES.  
STOVES FOR COAL AND WOOD.

Rollers guaranteed more economical and quicker than  
any other made.

"HOW BEST TO HEAT OUR HOMES," sent Free on  
application.

385 and 387 St. Paul Street, Montreal.

**Chanteloup Manufacturing Co.**

MANUFACTURERS AND DEALERS IN (Successors to E. CHANTELOUP)

RAILWAY SUPPLIES, BRASS-FINISHERS, ARCHITECTURAL  
IRONWORK, TELEGRAPHIC INSTRUMENTS, &c.

587 to 593 Craig Street, - - Montreal.

Ho—May I see you homo? Sho—  
No, but you may watch me start.

What sticketh closer than a brother?  
A postage stamp, by gum.

You cannot teach an old dog new  
tricks, but you can buy a new dog.

It is surprising how well we can  
stand the misfortunes of our friends.

The man who has a kind word for  
everybody does more good than a surly  
one could do with money.

I suppose Bliggins stenographer  
saves him a great deal of time. Yes.  
He does not have to look in the dic-  
tionary to see how words are spelled  
now.

Move forward a little! roared the  
street-car conductor. I cannot, gasped  
the man in front; I do not know how  
to ride horseback.

Mrs. Hicks—Mary, where is Dicky?  
Mary—Out in the back yard, mum.  
Mrs. Hicks—Go out and see what he  
is doing and tell him to stop it.

**N. CIRGE,** 2021 Notre Dame St.  
MONTREAL.

MERCHANT TAILOR & GENTS' FURNISHER.

R. R. and Street Car  
Uniforms a specialty.

English and French Worsteds, Scotch Tweeds,  
Fancy Suitings and Pantings, Silk Vestings, etc.

A full assortment of Gents' Neckwear, Under-  
wear, shirts, Collars, Cuffs, Gloves, Socks, Braces,  
Umbrellas, etc. in stock  
TELEPHONE 2172.

**JAS. WILSON & CO.**

Oils, Railway, Steamship and Mill  
Supplies,

MONTREAL.

**WILSON'S**  
HITE  
and Colored  
PIPING  
ASTE,  
Also  
COOL  
Packing  
ASTE  
For Car Boxes.

**Too Considerate.**

Pat Hooligan, while slating the roof  
of one of our highest buildings, lost  
his footing and fell.

Over and over he went until within  
35 feet of the pavement, when he struck  
a telegraph wire and managed to grasp  
it, first with one hand, then with both.

"Hang on for your life, Pat!" shout-  
ed his fellow workmen, and the bystand-  
ers rushed to the nearest dwelling for a  
mattress.

Pat held on for a few seconds, when  
suddenly, with a cry of "Stand from  
under!" he dropped and lay senseless  
in the street.

Whisky was used, and Pat finally  
came to.

When asked why he didn't hold out  
longer, he feebly replied:

"Of wuz afraid the wire'd break!"  
He recovered.—New York Dispatch.

**Like a Scotch Verdlet.**

Chancellor Henry Bathurst was held  
in low esteem by the bar on account of  
his ignorance. At the close of the trial  
of the Duchess of Kingston for bigamy  
he gravely addressed her grace in the  
following terms: "A. Jam, the lords  
have considered the charge and evidence  
brought against and have likewise con-  
sidered of everything which you have  
alleged in your defense, and upon the  
whole matter their lordships have found  
you not guilty of the felony wherewith  
you stand charged, but on dismissing  
you their lordships earnestly exhort you  
not to commit the same crime a second  
time."—Green Bag.

**He Didn't Catch On.**

"May I—may I kiss those ruby lips?"  
"Sir! Do not think of such a thing  
for one moment!"

"Well, I—I could hardly help asking.  
I beg your—"

"Don't you think, Mr. Hoppy, that  
one moment is up by this time?"

**Bellhouse, Billon & Co.,**

20 St. Francois Xavier St., MONTREAL  
Importers of Chemicals, Dyewoods, Acids  
and Aniline and Alizarine Colors.  
Sole Agents for Wm. PICKHARDT & KUTT  
ROFF. Full stock of their celebrated  
Colors kept on hand.

**Carriage Painters Wanted**

—TO USE THE—  
**BAYLIS' RUBBING VARNISH**

The well-known Canada Carriage Co., of Brockville and Gananoque, use this  
Varnish, and permit us to mention their name. For sale by all Wholesale Carriage  
Hardware Houses, or direct from the makers.

Baylis Manufacturing Company, MONTREAL.

**Simpson, Hall, Miller & Co.,**

—MANUFACTURERS OF—

**STERLING SILVER**

—AND FINE ELECTRO-PLATED WARE—

WILLIAM ROGER'S KNIVES, FORKS & SPOONS. ASK YOUR DEALER FOR THEM.

SHOWROOMS 1791 Notre Dame St. et. MONTREAL. FACTORY: 5, 7, 9 and 11 Recollet St.

**CUMBERLAND RAILWAY & COAL CO.**

MINERS AND SHIPPERS OF

SPRINGHILL COAL,

UNEQUALLED FOR STEAM PURPOSES.  
— Fresh mined All-rail Coal. —

HEAD OFFICE:

IMPERIAL BUILDINGS,  
PLACE D'ARMES, Montreal.



→ MAMELONS ←

\* A LEGEND OF THE SAQUENAY \*

CHAPTER I.  
THE TRAIL.

It was a long and lonely trail, the southern end of which John Norton struck in answer to the summons which a tired runner brought him from the north. The man had made brave running, for when he reached the trapper's cabin and had placed the birchbark packet in his hands he staggered to a pile of skins and dropped heavily on them, like a hound which, from a three day's chase, trails weakly to the hunter's door, spent nigh to death. So came the runner, running from the north, and so, spent with his mighty race, dropped as one dead upon the pile of skins.

He bore the death call of a friend, whose friendship had been tested on many an ambushed trail and the sharp edge of dubious battle. The call was writ on bark of birch, thin as the thinnest silk the ancients wove from gossamer when weaving was an art and mystery, and not a sordid trade to earn a pittance with, traced in delicate letters by a hand the trapper would have died for. A good five hundred miles that trail ran northward before it ended at the couch of skins, in the great room of the great house, in which the chief lay dying. And when the trapper struck it he struck it as an eagle strikes homeward toward the cradle crag of his younglings, when talons are heavy and daylight scant. He drew his line by the star that never sets, and little turning did he make for river, rapids, or tangled swamp, for mountain slope or briery windfall. He drew a trail no man had ever trod—a blazeless trail, unmarked by stroke of axe or cut of knife by broken twig or sharpened rod, struck into mold or moss, and by its angle eeling whence came the trailer, whither went he, and how fast. From earliest dawn till night thickened the woods and massed the trees into a solid blackness, he hurried on, straight as a pigeon flies when homing, studying no sign for guidance, leaving none to tell he had come and gone. He was at middle prime of life, tough and pliant as an ashen bough grown on hill, seasoned in hall, sweated and strung by constant exercise for highest action, and now each muscle and each sinew of his conditioned frame was taut with tension of a strong desire—to reach the bedside of the dying chief before he died. For the message read: "Come to me quick, for I am alone with the terror of death. The chief is dying. At the millar of white rock, on the lake, a canoe with oars and paddles, will be waiting."

The trapper was clad in buckskin from cap to moccasins. His tunic, belted tight and fringed, was opened widely at the throat for freest breathing. A pack, small, but rounded with strained fullness, was at his back. His horn and pouch were knotted to his side. In tightened belt was knife, and, trailing muzzle down and held reversed, a double rifle. Stripped was the man for speed, as when balanced on the issue of the race hang life and death. As some great ship, caught by some sudden gale off Anticosti or Dead Man's reef, and bare of sail, stripped to her spars, past battures, hollow and hoarse-voiced as death and ghastly white, and through the damned eddys that would suck her down and crush her with stones which grind forever and never see the light, sharpening their cuttings with their horrid grunts, runs scudding; so ran the strong man northward, urged by a fear stronger than that of wreck on the ghost-peopled shore of deadly St. Lawrence. A hound, huge of size, bred to a hair, ambled steadily on at heel. And though he crossed many a scent, and more than once his hurrying master started a buck warm from his nest, and nose was busy with knowledge of game afoot, he gave no whimper nor swerved aside, but, silent, followed on the way his master was so hurriedly making, as if he felt with him the solemn need which urged the trail northward. Never before had runner faced a harder trail, or under high command or deadly pearl pushed it so fiercely forward.

Seven days the trail ran thus, and still the man, tireless of foot, hurried on, and the hound followed silently at heel. What a body was his! How its powers responded to the soul's summons! For on this seventh day of highest effort, taxing with heavy strain each muscle, bone and joint to the utmost, days lengthened from earliest dawn to deepest gloaming, the strong man's face was fresh, his eye was bright, and he swung steadily onward, with long, swinging, easy-motioned gait, as if the prolonged and terrible effort he was making was but a morning's burst of speed for healthy exercise.

The climate favored him. October, with all its glorious colors, was on the woods, and the warm body of the air was charged through and through with cool atmospheric movements from the north. It was an air to race for one's life in. Soft to the lungs, but filled with its blue edge with oxygen and that mystic element men call ozone; the glow of God's vitality spilled over the azure brim of heaven, whose volatile flavor fills the nose of him who breathes the air of mountains.

(To be continued.)

RATES FROM QUEBEC TO POINTS IN NEW ENGLAND STATES.

QUEBEC TO	Unlimited	
	1st Class	2d Class
Amesbury, Mass.	\$10 50	\$9 25
Athol, Mass.	10 25	9 45
Auburn, Me.	8 50	7 50
August, Me.	10 35	9 25
Ayer Junction, Mass.	10 25	9 05
Bancroft, Me.	12 50	11 50
Bar Harbor, Me.	12 50	12 50
Bellefleur, via Portland, Me.	9 25	8 50
Boston	11 00	9 25
Bridgesboro, Vt.	9 05	8 00
Brockton, Mass.	12 00	10 30
Burlington, Vt.	11 85	10 30
Chicopee Falls, Mass.	10 45	9 70
Claremont Jct. via Windsor, N.H.	8 05	7 00
Concord, via Wells River, N.H.	9 00	8 50
Concord, Mass.	10 00	9 10
Conway Junc., via Portland, Me.	9 75	8 75
Cottage City, via O. d. Colony R. R. and steamer, Mass.	13 65	11 00
Dover, N.H.	9 00	8 75
East Junc.	7 30	6 20
Fabyans, N.H.	12 20	10 45
Fa. l. River, Mass.	10 25	9 05
Fitchburg, Mass.	10 10	9 10
Gardiner, Me.	10 25	9 20
Gardner, Mass.	8 70	7 70
Greenfield, via Portland, Me.	10 00	9 25
Greenfield, N.H.	10 85	9 85
Greenville, N.H.	11 00	10 00
Hartford, Vt.	10 50	9 75
Haverhill, Mass.	7 35	6 30
Haverhill, N.H.	10 25	9 50
Holyoke, Mass.	9 00	8 25
Keece, via Bellefleur Falls, N.H.	9 10	8 05
Lacomb, N.H.	9 00	7 95
Lake Village, N.H.	6 90	6 40
Langcaster, N.H.	10 50	10 00
Lawrence, Mass.	8 50	7 50
Leicester, Me.	10 50	9 75
Lowell, Mass.	6 25	5 20
Lyndon, Me., Vt.	10 00	8 50
Manchester, N.H.	11 35	10 00
Meriden, Ct.	10 20	9 45
Millers Falls, Mass.	10 25	9 50
Nashua Junc., N.H.	12 35	10 80
New Bedford, Mass.	11 30	10 00
New Britain, Ct.	10 50	9 25
Newburyport, Mass.	11 75	10 00
New Haven, Ct.	11 50	10 00
New London, Ct.	12 70	10 05
Newport, R.I.	12 00	10 00
Newport, Vt.	10 00	10 25
New York, N.Y.	8 85	7 85
North Adams, Mass.	8 50	7 50
O. Orchard Beach, via Portland, Me.	12 00	10 25
Portland, Me.	9 78	8 60
Providence, R.I.	9 78	8 60
Rochester, via Nor. Con. or P. & N.H.	6 50	5 45
St. Albans, Vt.	9 75	8 75
St. Johnsbury, Vt.	10 35	9 60
Salem Falls, N.H.	11 55	10 55
Salem, Mass.	10 90	9 75
Springfield, Mass.	11 10	9 25
Waltham, Mass.	11 85	10 60
Waterbury, Ct.	10 80	9 80
Waterville, Me.	7 10	6 05
Wells River, Vt.	8 30	7 25
White River Junc., Vt.	11 50	10 00
Windsor, N.H.	7 10	6 05
Worcester, Mass.	10 00	9 75

MARS' TOM'S GRAVE.

A Faithful Old Colored Servant Devoted to His Late Master.

"I saw a pathetic instance at Greensboro of a negro's fidelity," said W. L. Williams, a traveling man. "About ten miles from the town I saw a grave with a marble slab at its head. Seated near it was an old negro with a bunch of flowers which he was placing over the mound. I stopped my horse and spoke to him.

"Whose grave is that, unclor?" I asked. "Mars' Tom's, boss. I'ze his nigger," "Oh, no. You are no man's nigger now. Didn't you know that you were free?" "Dunno nuffin 'bout dat, sah. I'ze Mars' Tom's nigger, sah, an ho's waitin' for me suah up dah. Dese han's done sote 'im frum dat place dey call Shiloh, an he diea while I wah a-totin' 'im. Jest closed he eyes an went ter sleep, an when I comes ter cross da ribber of Jordan he jest holo out his han's an he tells de angel at de gate who I be, an he let me in. I dreamed 'bout it las' night, boss."

"I was interested in the old fellow and wanted to hear his story. The slab at the grave told me that it was that of 'Colonel Tom Winn, killed at the battle of Shiloh,' and I questioned the faithful negro farther:

"How old are you, unclor?" "Most a hundred, I reckon, sah." "Was you in the war?" "Went wif Mars' Tom, sah. I'ze his nigger, an he's in heaben. I'ze jest a-waitin' till dese ole bones, weary trawbling over de road, 'll take me ter de ribber, when Mars' Tom 'll help his ole nigger ober."

"Were you with him when he was killed?" "I was right dar, boss. Done pick 'im up an toted 'im ter dat place dey call Corinth. Den I found a train; got ter de place dey call Chattanooga. De nex' day we wah in Atlanta. Mars' Tom den in his glory. Dis heah nigger let 'er 'ten his body. Dey buried 'im when I got 'im heah, an dis nigger jest 'lof 'ter 'ten his grave an keep de flowers bynh."

"I found upon inquiry that the story was true, and for a quarter of a century the faithful negro had done nothing but attend the grave of his young master, whose body he brought from northern Mississippi to central Georgia."—Cincinnati Enquirer

QUEBEC CENTRAL RAILWAY.

LOCAL PASSENGER TARIFF FROM SUDBOROUGH.

-TO-	MILE	SINGL.		RETURN	
		1st Cl.	2d Cl.	1st Cl.	2d Cl.
Lanoxie	4	0 15	0 10	0 25	0 15
Ascot	10	0 25	0 20	0 50	0 40
East Angus	16	0 55	0 35	0 90	0 60
Dudawell Junction	25	0 85	0 60	1 40	1 00
Dudawell	25	0 85	0 60	1 40	1 00
Marbleton	27	0 90	0 65	1 50	1 10
Weedon	30	1 20	0 85	2 00	1 40
Lake Weedon	41	1 35	0 95	2 25	1 60
Gashby	47	1 55	1 10	2 60	1 85
D'Isaac	52	1 75	1 20	2 90	2 00
Coleraine	57	1 90	1 35	3 15	2 25
Black Lake	63	2 10	1 45	3 50	2 40
Theford Mines	67	2 25	1 55	3 75	2 60
Robertson	72	2 40	1 70	4 00	2 85
Brighton	78	2 60	1 80	4 35	3 00
Tring	87	2 90	2 05	4 85	3 40
St. Frederic	91	3 05	2 10	5 10	3 50
Beauce Junction	100	3 35	2 35	5 60	3 90
St. Marc	104	3 55	2 45	5 90	4 10
Scotts	110	3 85	2 55	6 10	4 25
St. Henri	117	3 90	2 75	6 50	4 60
St. Anselme	122	3 95	2 85	6 60	4 75
St. Henry Village	129	3 95	2 90	6 60	5 00
St. Henry Junction	132	3 95	2 90	6 60	5 00
Harlakka Junction	138	3 95	2 90	6 60	5 00
Levis	143	3 95	2 90	6 60	5 00
Quebec	147	4 00	2 95	6 65	5 05
Cincoque Vallee					
Braxton					
St. Joseph	105	3 50	2 45	5 85	4 10
La Rocher	112	3 75	2 60	6 25	4 35
St. Francis	115	3 85	2 70	6 40	4 60

Half-Fare will be charged for Children between the ages of six and twelve.

He Took Salmon. "I say, Gaddersby," said Mr. Smith as he came into the fishmonger's with a lot of tackle in his hand. "I want you to give me some fish to take home with me. Put them up to look as if they've been caught today, will you?"

"Certainly, sir," said the fishmonger. "How many?" "Oh, you'd better give me three or four barbel. Make it look decent in quantity without appearing to exaggerate, you know."

"Yes, sir. But you'd better take salmon, hadn't you?"

"Why, what makes you think so?" "Oh, nothing, except that your wife was down here early this afternoon and said if you dropped in with your fishing tackle and a generally woebegone look to have you take salmon if possible, as she liked that kind better than any other."

Mr. Smith took salmon.—Pearson's Weekly.

POPULATION OF TOWNS AND VILLAGES

Situated on the line of the Quebec Central Railway and outlying districts.

Table listing population of various towns and villages including Sherbrooke, Ascot, East Angus, Marlinton, Weedon, Lake Weedon, Garthby, D'Iscail, Coleraine, Black Lake, Theford Mines, Robertson, Broughton, Tring, St. Frederic, Beauce Junction, St. Mary, Scotts, St. Anselme, St. Henry Village, St. Joseph, St. Francis, and Quebec.

STATION AGENTS,

QUEBEC CENTRAL R'Y CO.

Table listing station agents for various locations including Sherbrooke, Ascot, East Angus, Dudswell Jct., Marlinton, Weedon, Lake Weedon, Garthby, D'Iscail, Coleraine, Black Lake, Theford Mines, Robertson, Broughton, Tring, St. Frederic, Beauce Jct., St. Joseph, St. Francis, St. Mary, Scotts, St. Heneline, St. Anselme, St. Henry Village, St. Henry Jct., Harlaka Jct., Lewis, and Quebec.

Advertisement for 'WHO'S Your Tailor? DUNCAN' with address 169-171 Wellington St., SHERBROOKE.

E. G. WIGGETT,

The Spectator

167 Wellington St., Sherbrooke, Q.

LOUIS DUPUY & CO., WATCHMAKERS AND JEWELERS

WHEN IN SHERBROOKE GO TO THE Victoria Restaurant

W. H. WIGGETT,

Ginger Ale, Soda Water, Cider, &c.

Not long ago a young Vermonter, who is said to be regarded as a genius in his native village, applied to the managing editor of a city newspaper of wide circulation for a position as reporter.

"Well, I reckon I have," answered the young man. "And I can tell you one thing, sir, if you want a fellow that's great on the spread I'm the man for you."

From the Sanitar's London friend comes this little anecdote of a Glasgow minister. The reverend gentleman, having observed that one of his congregation was in the habit of gazing about the church during prayers, told him one day that he considered it would be more becoming in a worshiper to keep his eyes decently closed.

Tie a knot in the middle of a hair, place it on your hand and close the hand so that the hair is completely covered by the fingers. A few minutes will suffice for the heat to loosen the knot in the hair, and frequently it disappears altogether.

A. H. FOSS,

22 WELLINGTON SQUARE, SHERBROOKE. FISHING TACKLE, SPORTING GOODS, SILVERWARE, CHINA AND GLASSWARE, &c.

Sherbrooke Carriage Factory, MANUFACTURER OF FINE CARRIAGES

In stock and made to order. Work done with promptness and dispatch. P. BIRON, Proprietor, East Sherbrooke, Que.

Files and Rasps

"Beaver Brand," warranted. Manufactured by THE BEAVER-FILE-WORKS-COMPANY, LEVIS, Que.

Advertisement for ELLETHIER & CO. Importers and M'rs of Billiards & Billiard Goods. 83 ST. DENIS ST., MONTREAL.

Advertisement for LE SIROP DE DENTITION PRINCESSE - ENFANTS. DAVID R. GAGNON, Chemist and Druggist, 30 St. Peter St., QUEBEC.

Advertisement for R. SAMPSON, Plumber, Gas Fitter, Tinsmith, &c. 63 Wellington St., SHERBROOKE.

Advertisement for FINLEY, THE PHOTOGRAPHER, 11 Wellington Street, SHERBROOKE.

Advertisement for THE BLIND MAN GEO. LONG, SASH, DOORS, BLINDS, FURNITURE, HOUSE FINISH, ETC. SHERBROOKE, QUE.

Advertisement for Livery, Board and Feed Stable, MEADOW STREET, SHERBROOKE, P. Q. J. C. HARKNESS, Proprietor.

Advertisement for CHAS. R. COUSINS, ST. JOHNS, P. Q.

Advertisement for Flour, Grain and Produce, SPECIAL BRANDS OF FLOUR: GOLDEN SHEAF, O. K., HUNGARIAN PATENT.

'Well, if that ain't mes!', exclaimed the prisoner. 'Every one of the stories in this paper they've gimme to read is 'to be continued.' An me to be hung next week.'

Ho (suspiciously)—Has any other fellow ever kissed you, Marguerite? She—No, Horatio. Why do you ask? Ho—Because you were self-possessed enough to scream.

.....ESTABLISHED 1815.....

**WATSON'S DUNDEE WHISKY**

**JAMES GUEST & CO., Montreal.**

**AGENTS for the Dominion of Canada.**

**BEST ON EARTH**

OFFICES: 27 AND 29 ST. SACRAMENT STREET.

# LOTS OF FUN

Sent (securely sealed) to any address

For Gents, . . . 25c. In Stamps.  
For Ladies, . . . 20c. In Stamps.

LOCK BOX 188, HALIFAX, N.S.

### BOTH FOUND WIVES.

A Double Wedding Which the Preacher Celebrated by "Setting 'Em Up."

A Mr. Godwin of Camilla and S. A. Davis of Pelham, Ga., both towns being in the same county, were last week visiting John Burgess of Bowen, in Powell county, this state. Mr. Godwin married a sister of the wife of Mr. Burgess, but she died a few years since, and on Thursday of last week he remarked to his host that he wouldn't mind marrying again if he could get some one to suit him. Mr. Burgess replied that he knew a lady in the town who would suit him, and Godwin said he would go and see her. Friday morning he spruced up some and went over to see the lady, who during the day consented to change her name to Godwin. Returning to the home of Mr. Burgess, he informed him of his success, when Mr. Davis, being thus encouraged and feeling lonely under the circumstances, concluded that he also would like to marry. Miss Host Burgess, ever ready to accommodate his visitors, told him that he could find him a helpmate also, at the same time stating her name and where she could be found.

Saturday Mr. Davis repaired to the residence of the lady named, and after some commonplace talk and an explanation of his mission she, too, agreed to wed a Georgian. Preparations were made for the event, and on Monday night the two couples were duly installed into the matrimonial harness. The bridegrooms, being much elated at their matrimonial success, set 'em up to the crowd to the extent of a gallon of red liquor each, and quite a jollification was held. On Tuesday morning the preacher was paid his fee for the double services, and he, too, set 'em up to the crowd for a drink all round to those in the barroom.—Hazel Green (Ky.) Herald.

### An Odd Lawsuit.

Mme. Wagner has just won one of the oddest of lawsuits. At Bairenth last year, as a piece of pleasantry on the anniversary of the birth of her son Siegfried, she composed some verses and tied them to the necks of her five pet dogs. These verses got into the possession of a Bairenth newspaper, and they were published, provoking much amusement, particularly when the lines were reprinted in the French newspapers. Mme. Wagner's only remedy was to sue for breach of copyright. The courts assessed the damages at \$6.

### Negotiations Not Complete.

Customer (female and unfair)—I ordered ten yards of dress goods here yesterday to be sent. Has it been cut yet?  
Shopwalker—No indeed. The assistant said you hadn't been in yet to change your mind.—London Globe.

Whenever you see ingratitude you may as infallibly conclude that there is a growing stock of ill nature in the breast, as you may know that man to have the plague upon whom you see the tokens.

## HOTEL DIRECTORY.

SHERBROOKE, P.Q.

### —ALBION HOTEL—

Corner King and Wellington Streets, Sherbrooke, Que.

W. M. CLARK, PROPRIETOR.

### AMERICAN HOUSE,

OPP SITE G.T.R. DEPOT,  
COLLINS & McDONALD, Props.

LEVIS, P.Q.

### ST. LAWRENCE HOTEL,

Near the Railways and Ferry,

—LEVIS.—

W. LAWLOR, Prop. *Times Maritime.*

### TERMINUS HOTEL,

LEVIS FERRYBOAT.

Liquors and Cigars of the best brands. Meals at all hours.

P. Hunt, Mgr. J. B. Caron, Prop.

COOKSHIRE, P.Q.

### COOKSHIRE HOTEL

ALDEN LEARNED, Prop. First-class accommodation for the travelling public. Charges moderate. Good sample rooms. Luggage conveyed to and from the Station free. First-class livery attached.

RICHMOND, P.Q.

### ST. JACOB'S HOTEL

J. S. SNOW, PROPRIETOR.

MAIN STREET, RICHMOND, QUE.

Large Rooms, newly furnished and first-class in every respect. Centrally located. First-class Sample Rooms and Livery in connection.

FREE BUS to all Trains.

ST. JOHNS, P.Q.

### UNITED STATES HOTEL,

ST. JOHNS, QUE. J. U. CARTIER, Prop.

Board and Table Board at reasonable rates. Sales stabling and Livery attached. Free bus to all trains. Rate, \$1.00 per day.

### —\* D. LALIBERTE \*—

Machinist, Boiler Maker,

Brass and Iron Founder.

Manufacturer and Repairer of all kinds of Machinery, Engines, etc. Lowest Rates. All Work Guaranteed. A Specialty made of Butter and Cheese Machinery. Correspondence solicited.

ST JOHN ST. ♦ ST. JOHNS, Que.  
NEAR C.P.R.

### HOW TO TELL AGES.

Here is the magic table:

1	2	3	4	5	6	7	8	9	10	11	12	13	14	15	16	17	18	19	20	21	22	23	24	25	26	27	28	29	30	31	32	33	34	35	36	37	38	39	40	41	42	43	44	45	46	47	48	49	50	51	52	53	54	55	56	57	58	59	60	61	62	63	64	65	66	67	68	69	70	71	72	73	74	75	76	77	78	79	80	81	82	83	84	85	86	87	88	89	90	91	92	93	94	95	96	97	98	99	100
---	---	---	---	---	---	---	---	---	----	----	----	----	----	----	----	----	----	----	----	----	----	----	----	----	----	----	----	----	----	----	----	----	----	----	----	----	----	----	----	----	----	----	----	----	----	----	----	----	----	----	----	----	----	----	----	----	----	----	----	----	----	----	----	----	----	----	----	----	----	----	----	----	----	----	----	----	----	----	----	----	----	----	----	----	----	----	----	----	----	----	----	----	----	----	----	----	----	----	-----

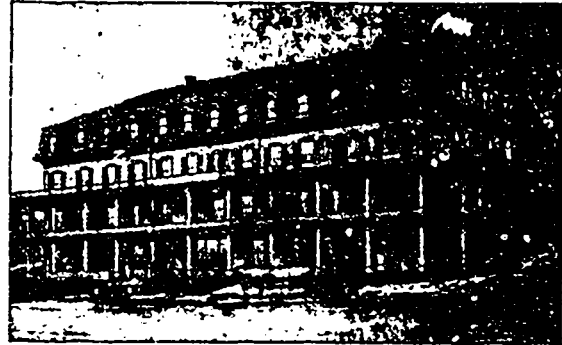
There is a good deal of amusement in the following magical table of figures. It will enable you to tell how old the young ladies are. Just hand this table to a young lady, and request her to tell you in which column or columns her age is contained. And add together the figures at the top of the columns in which her age is to be found. You will find that the number is in the first and fifth columns; add the first figures of these two columns.

## LEADING HOTELS.

CARDS OF HOTELS

ON LINE OF

QUEBEC CENTRAL AND QUEBEC & LAKE ST JOHN R'YS.



### SHERBROOKE HOUSE, Sherbrooke, P.Q.

W. A. RICHARDSON & CO., PROPRIETORS.

House open for all night trains. Free carriage to and from C. P. R. Station. Entirely re-furnished throughout. Steam Heat, Electric Light, Electric Bells, Bathrooms. Opposite Union Depot.

GOOD SAMPLE ROOMS ON GROUND FLOOR.

Mr. Richardson was formerly of White Mountains and Florida Hotels.

Any one looking for Tracts of Good Timber Land, can do no better than to call on or write to W. A. RICHARDSON, who has several good tracts for sale.

### MAGOG HOUSE



### MAGOG HOUSE

Sherbrooke, Que.

HENRY H. INGRAM - PROPRIETOR.

Nicely Situated opposite the Bank and Post Office.

Lighted with Electricity and Heated with Steam.

### CONTINENTAL HOUSE,

Cor. KING and WELLINGTON Streets

CAMIRAND & DUPONT, - PROPS.

SHERBROOKE, P.Q.

## AVENUE HOUSE

17 AND 19

W'GILL COLLEGE AVENUE  
MONTREAL.

This Popular Family Hotel is Central, quiet, near Depots and Points of Interest. Travellers and Families will find Clean, Comfortable Rooms and Good Table. Hot and Cold Baths. No liquor sold. Terms \$1.50 to \$2.00 per day, according to rooms. Reduced Rates to Permanent Guests. Also Table Board.

E. S. REYNOLDS, Prop.

### Failed to Live Up to It.

One of the managers of a home for destitute colored children tells a funny story about the institution. She went out there to see how things were getting along and found a youngster as black as the inside of a coal mine tied to a bed-post, with his hands behind him. "What is that boy tied up there for?" she demanded of the attendant. "For lying, ma'am. He is the worstest, lyingest nigger I ever seen." "What's his name?" "George Washington, ma'am," was the paralyzing reply.—Chicago Record.

### He Must Do Something.

An inhabitant whose heels were striking sparks from the pavement as he walked entered the waterworks office, selected his clerk and fiercely announced, "Sir, you can send up and take your old gas meter out of my house." "This is not the gas office." "It isn't?" "No, sir. This is the waterworks office." "Oh, it is? Well, then, send up and turn the water off! I'm not going to walk 1 1/2 miles for nothing."—New York Dispatch.

# QUEBEC AND LAKE ST. JOHN RAILWAY.

Time-Tables to take effect on Wednesday, 6th February, 1895

MILES.	GOING NORTH.			MILES.	GOING SOUTH.		
	STATIONS.	No. 1 Through Express Monday and Thurs- day.	No. 3 Local Mail Daily except Sunday.		STATIONS.	No. 2 Through Express Tuesday and Satur- day.	No. 4 Local Mail Daily except Sunday.
0	Quebec	7:40	7:40	0	Chicoutimi	10:00	10:00
1	Hedleyville Jct.	7:45	7:45	1	Chicoutimi	10:05	10:05
3	Charlesbourg West.	7:50	7:50	3	Chicoutimi	10:10	10:10
6	Charlesbourg West.	8:00	8:00	6	Chicoutimi	10:20	10:20
8	Indian Lorette	8:05	8:05	8	Chicoutimi	10:25	10:25
12	Lorette Junction	8:15	8:15	12	Chicoutimi	10:35	10:35
14	Valcartier	8:20	8:20	14	Chicoutimi	10:40	10:40
18	St. Gabriel	8:30	8:30	18	Chicoutimi	10:50	10:50
22	St. Catherine	8:40	8:40	22	Chicoutimi	11:00	11:00
28	Lake St. Joseph	8:50	8:50	28	Chicoutimi	11:10	11:10
31	Lake St. Joseph	9:00	9:00	31	Chicoutimi	11:20	11:20
31	Bourg Louis	9:05	9:05	31	Chicoutimi	11:25	11:25
36	St. Raymond	9:15	9:15	36	Chicoutimi	11:35	11:35
43	Allen's Mill	9:25	9:25	43	Chicoutimi	11:45	11:45
52	Perthuis	9:35	9:35	52	Chicoutimi	11:55	11:55
58	Riviere a Pierre Jct.	9:45	9:45	58	Chicoutimi	12:05	12:05
65	Talbot	9:55	9:55	65	Chicoutimi	12:15	12:15
70	Laurentides	10:05	10:05	70	Chicoutimi	12:25	12:25
76	Miguick	10:15	10:15	76	Chicoutimi	12:35	12:35
86	Beaudet	10:25	10:25	86	Chicoutimi	12:45	12:45
91	Stadacona	10:35	10:35	91	Chicoutimi	12:55	12:55
102	Skruder's Mill	10:45	10:45	102	Chicoutimi	1:05	1:05
113	Lake Edward	10:55	10:55	113	Chicoutimi	1:15	1:15
121	Kiskisno	11:05	11:05	121	Chicoutimi	1:25	1:25
151	Lac aux Visions	11:15	11:15	151	Chicoutimi	1:35	1:35
160	Lake Bouchette	11:25	11:25	160	Chicoutimi	1:45	1:45
164	Dablon	11:35	11:35	164	Chicoutimi	1:55	1:55
203	O'Donnell's Siding	11:45	11:45	203	Chicoutimi	2:05	2:05
170	De Quen	11:55	11:55	170	Chicoutimi	2:15	2:15
177	Chambord Jct.	12:05	12:05	177	Chicoutimi	2:25	2:25
184	Oulatchouan Falls	12:15	12:15	184	Chicoutimi	2:35	2:35
190	Esteral	12:25	12:25	190	Chicoutimi	2:45	2:45
228	Chicoutimi	1:00	1:00	228	Chicoutimi	3:00	3:00

z Trains stop only when signalled. † Trains do not stop. Dinner at Lake Edward.

### CHICOUTIMI BRANCH.

MILES.	TO CHICOUTIMI.	Express, Monday and Thursday	MILES.	FROM CHICOUTIMI.	Express, Tuesday and Saturday
0	Roberval	4:35	0	Chicoutimi	10:00
6	Oulatchouan Falls	4:40	6	Chicoutimi	10:05
13	Chambord Jct.	4:45	13	Chicoutimi	10:10
18	Metabetchouan	4:50	18	Chicoutimi	10:15
23	St. Jerome	4:55	23	Chicoutimi	10:20
28	St. Gedeon	5:00	28	Chicoutimi	10:25
35	Hebertville Sta.	5:05	35	Chicoutimi	10:30
46	Kenogami	5:15	46	Chicoutimi	10:40
54	Jonquiere	5:25	54	Chicoutimi	10:50
64	Chicoutimi	5:35	64	Chicoutimi	11:00

[z Trains stop only when signalled.]

## GENDRON, DENAULT & CO.,

WHOLESALE DEALERS IN

### Grain, Flour and General Groceries,

Please Ask for Quotations.

SHERBROOKE, P. Q.

J. J. CREE & CO.,

THE VICTORIA LAUNDRY

77 1/2 Craig St., MONTREAL.

Telephone 1180. Agents wanted in all towns. Special rate for families. Satisfaction guaranteed.

"Phoenix" & "Dominion" MATCHES

ARE THE BEST. Ask for Quotations. HARDY & DUBORD, Beauport, Q. Branch office, 275 St. Paul St. Montreal.

### Seminaire St. Charles-Borromeo, Sherbrooke.

Affiliated to Laval University in 1878. Established in 1875.

Commercial and Classical Courses in English and French. Commercial Course taught in three years, and comprises: Arithmetic, Penmanship, Book-keeping, Geography, History of Canada, Linear Drawing, Banking and Music, Stenography, Typewriting, Telegraphy, and general outlines of Geometry. The Classical Course comprises Greek, Latin, English and French languages, and Literature, Mathematics, History, Geography, Philosophy, Natural Sciences and Music.

MONTHLY FEES—Tuition \$3.00, Board, \$8.00, Washing, \$1.00, Bedding \$1.00, Doctor's Fee, \$2.00 a year.

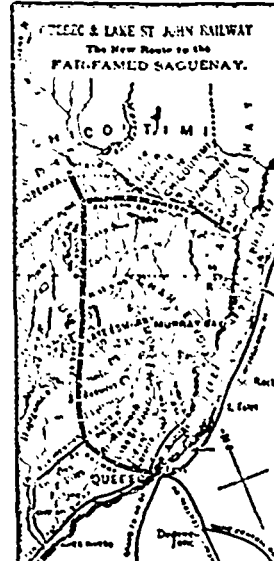
MILES.	Lower Laurentian Division.		No. 13	No. 15
	STATIONS.		Tuesday, Wednesday, Friday and Saturday.	Monday and Thursday.
0	QUEBEC (Q. & L. St. J. Ry.)	Lv	4 15 p.m.	7 30 a.m.
2	Riviere a Pierre Junction (Q. & L. St. J. Ry.)	Ar	8 15 p.m.	10 48 a.m.
3	Riviere a Pierre Junction	Lv	8 00 a.m.	11 00
4	Lake Caribou	Lv	8 20	11 20
5	L'Etolle	Lv	8 35	11 30
6	Notre Dame des Anges	Lv	3 50	11 40
7	Lac aux Sables	Lv	9 15	12 00 p.m.
8	Reed's Camp	Lv	9 45	12 20
9	St. Thecle	Lv	10 10	12 35
10	St. Tite Station	Lv	10 50	1 10
11	St. Tite Junction	Ar	11 20 a.m.	1 30 p.m.
12	St. Tite Junction (C. P. R.)	Lv	1 40 p.m.	1 40
13	THREE RIVERS (C. P. R.)	Ar	3 20	3 60
14	THREE RIVERS (C. P. R.)	Lv	4 15	4 15
15	MONTREAL (C. P. R.)	Ar	8 00 p.m.	8 00 p.m.

Tuesdays, Thursdays and Saturdays. † Mondays, Wednesdays and Fridays. CONNECTIONS—The above trains will connect with the C. P. R. at St. Tite Junction (Piles Branch) daily to and from Three Rivers and Grand Piles. At Riviere a Pierre Junction, with morning express trains from Quebec on Mondays and Thursdays, and also with train leaving Quebec at 1.15 p.m. on Mondays, Wednesdays and Fridays, and for Quebec, with evening express trains, Tuesdays and Saturdays, and also with trains leaving Riviere a Pierre Junction at 5 a.m. on Tuesdays, Thursdays and Saturdays.

ALEX. HARDY, General Passenger and Freight Agent. J. G. SCOTT, Secretary and Manager.

## THE NEW ROUTE TO THE FAR-FAMED SAGUENAY.

The Eastern Extension of this Railway from Lake St. John to Chicoutimi is a very important addition to the system, by which tourists are offered a round trip, namely: from Quebec to Lake St. John and thence to Chicoutimi by rail, and down to Saguenay by daylight and back to Quebec by water, by the well-known steamers of the Richelieu and Ontario Navigation Co.



It is no exaggeration to say that this trip, for grandeur of scenery, is unequalled in America. On the Summer Time Table, passengers leave Quebec at 8.50 A.M., daily, except Sunday, arriving at Roberval, Lake St. John (100 miles), at 4.50 P.M. The train runs to the door of the new and magnificent Hotel Roberval, equipped with luxurious furniture, hot and cold water baths, electric light, and every convenience of a first-class city hotel. Here the traveller can enjoy an excellent dinner. And, if he does not desire to make a longer stay, he may take the train the same evening for Chicoutimi. The run to that town (64 miles) will be made in two hours and a half, over a well finished, well ballasted road, built in the most substantial manner, and thoroughly equipped.

Trains will run to the steamer wharf at Chicoutimi, connecting there on Tuesday, Wednesday, Friday and Saturday with the magnificent Saguenay steamers of the Richelieu and Ontario Navigation Co., until September 16, and on Tuesday and Friday after that date. The run down the Saguenay will be made by daylight, the steamer reaching Riviere du Loup at about five in the afternoon, where passengers may either drive to the Cacouna Hotel, take trains for points on the Intercolonial Railway, or go on by steamer to Murray Bay and Quebec. A longer stay at Roberval is however advised. In addition to excellent hotel accommodation, Lake St. John and the country surrounding it offer innumerable attractions.

QUEBEC

SPRINGFIELD AND NEW YORK.

READ UP		READ DOWN	
Station	Time	Station	Time
Quebec	11:33	St. John	1:00
St. Charles Jc.	11:40	St. Joseph	1:05
St. Mary	11:45	St. Francis	1:10
St. Anne	11:50	St. Rocher	1:15
St. Louis	11:55	St. Jean	1:20
St. George	12:00	St. Pierre	1:25
St. James	12:05	St. Michel	1:30
St. Peter	12:10	St. Charles	1:35
St. Paul	12:15	St. Anne	1:40
St. John	12:20	St. Louis	1:45
St. George	12:25	St. Mary	1:50
St. James	12:30	St. Peter	1:55
St. Paul	12:35	St. Paul	2:00
St. John	12:40	St. John	2:05
St. George	12:45	St. George	2:10
St. James	12:50	St. James	2:15
St. Peter	12:55	St. Peter	2:20
St. Paul	1:00	St. Paul	2:25
St. John	1:05	St. John	2:30
St. George	1:10	St. George	2:35
St. James	1:15	St. James	2:40
St. Peter	1:20	St. Peter	2:45
St. Paul	1:25	St. Paul	2:50
St. John	1:30	St. John	2:55
St. George	1:35	St. George	3:00
St. James	1:40	St. James	3:05
St. Peter	1:45	St. Peter	3:10
St. Paul	1:50	St. Paul	3:15
St. John	1:55	St. John	3:20
St. George	2:00	St. George	3:25
St. James	2:05	St. James	3:30
St. Peter	2:10	St. Peter	3:35
St. Paul	2:15	St. Paul	3:40
St. John	2:20	St. John	3:45
St. George	2:25	St. George	3:50
St. James	2:30	St. James	3:55
St. Peter	2:35	St. Peter	4:00
St. Paul	2:40	St. Paul	4:05
St. John	2:45	St. John	4:10
St. George	2:50	St. George	4:15
St. James	2:55	St. James	4:20
St. Peter	3:00	St. Peter	4:25
St. Paul	3:05	St. Paul	4:30
St. John	3:10	St. John	4:35
St. George	3:15	St. George	4:40
St. James	3:20	St. James	4:45
St. Peter	3:25	St. Peter	4:50
St. Paul	3:30	St. Paul	4:55
St. John	3:35	St. John	5:00
St. George	3:40	St. George	5:05
St. James	3:45	St. James	5:10
St. Peter	3:50	St. Peter	5:15
St. Paul	3:55	St. Paul	5:20
St. John	4:00	St. John	5:25
St. George	4:05	St. George	5:30
St. James	4:10	St. James	5:35
St. Peter	4:15	St. Peter	5:40
St. Paul	4:20	St. Paul	5:45
St. John	4:25	St. John	5:50
St. George	4:30	St. George	5:55
St. James	4:35	St. James	6:00
St. Peter	4:40	St. Peter	6:05
St. Paul	4:45	St. Paul	6:10
St. John	4:50	St. John	6:15
St. George	4:55	St. George	6:20
St. James	5:00	St. James	6:25
St. Peter	5:05	St. Peter	6:30
St. Paul	5:10	St. Paul	6:35
St. John	5:15	St. John	6:40
St. George	5:20	St. George	6:45
St. James	5:25	St. James	6:50
St. Peter	5:30	St. Peter	6:55
St. Paul	5:35	St. Paul	7:00
St. John	5:40	St. John	7:05
St. George	5:45	St. George	7:10
St. James	5:50	St. James	7:15
St. Peter	5:55	St. Peter	7:20
St. Paul	6:00	St. Paul	7:25
St. John	6:05	St. John	7:30
St. George	6:10	St. George	7:35
St. James	6:15	St. James	7:40
St. Peter	6:20	St. Peter	7:45
St. Paul	6:25	St. Paul	7:50
St. John	6:30	St. John	7:55
St. George	6:35	St. George	8:00
St. James	6:40	St. James	8:05
St. Peter	6:45	St. Peter	8:10
St. Paul	6:50	St. Paul	8:15
St. John	6:55	St. John	8:20
St. George	7:00	St. George	8:25
St. James	7:05	St. James	8:30
St. Peter	7:10	St. Peter	8:35
St. Paul	7:15	St. Paul	8:40
St. John	7:20	St. John	8:45
St. George	7:25	St. George	8:50
St. James	7:30	St. James	8:55
St. Peter	7:35	St. Peter	9:00
St. Paul	7:40	St. Paul	9:05
St. John	7:45	St. John	9:10
St. George	7:50	St. George	9:15
St. James	7:55	St. James	9:20
St. Peter	8:00	St. Peter	9:25
St. Paul	8:05	St. Paul	9:30
St. John	8:10	St. John	9:35
St. George	8:15	St. George	9:40
St. James	8:20	St. James	9:45
St. Peter	8:25	St. Peter	9:50
St. Paul	8:30	St. Paul	9:55
St. John	8:35	St. John	10:00
St. George	8:40	St. George	10:05
St. James	8:45	St. James	10:10
St. Peter	8:50	St. Peter	10:15
St. Paul	8:55	St. Paul	10:20
St. John	9:00	St. John	10:25
St. George	9:05	St. George	10:30
St. James	9:10	St. James	10:35
St. Peter	9:15	St. Peter	10:40
St. Paul	9:20	St. Paul	10:45
St. John	9:25	St. John	10:50
St. George	9:30	St. George	10:55
St. James	9:35	St. James	11:00
St. Peter	9:40	St. Peter	11:05
St. Paul	9:45	St. Paul	11:10
St. John	9:50	St. John	11:15
St. George	9:55	St. George	11:20
St. James	10:00	St. James	11:25
St. Peter	10:05	St. Peter	11:30
St. Paul	10:10	St. Paul	11:35
St. John	10:15	St. John	11:40
St. George	10:20	St. George	11:45
St. James	10:25	St. James	11:50
St. Peter	10:30	St. Peter	11:55
St. Paul	10:35	St. Paul	12:00
St. John	10:40	St. John	12:05
St. George	10:45	St. George	12:10
St. James	10:50	St. James	12:15
St. Peter	10:55	St. Peter	12:20
St. Paul	11:00	St. Paul	12:25
St. John	11:05	St. John	12:30
St. George	11:10	St. George	12:35
St. James	11:15	St. James	12:40
St. Peter	11:20	St. Peter	12:45
St. Paul	11:25	St. Paul	12:50
St. John	11:30	St. John	12:55
St. George	11:35	St. George	13:00
St. James	11:40	St. James	13:05
St. Peter	11:45	St. Peter	13:10
St. Paul	11:50	St. Paul	13:15
St. John	11:55	St. John	13:20
St. George	12:00	St. George	13:25
St. James	12:05	St. James	13:30
St. Peter	12:10	St. Peter	13:35
St. Paul	12:15	St. Paul	13:40
St. John	12:20	St. John	13:45
St. George	12:25	St. George	13:50
St. James	12:30	St. James	13:55
St. Peter	12:35	St. Peter	14:00
St. Paul	12:40	St. Paul	14:05
St. John	12:45	St. John	14:10
St. George	12:50	St. George	14:15
St. James	12:55	St. James	14:20
St. Peter	13:00	St. Peter	14:25
St. Paul	13:05	St. Paul	14:30
St. John	13:10	St. John	14:35
St. George	13:15	St. George	14:40
St. James	13:20	St. James	14:45
St. Peter	13:25	St. Peter	14:50
St. Paul	13:30	St. Paul	14:55
St. John	13:35	St. John	15:00
St. George	13:40	St. George	15:05
St. James	13:45	St. James	15:10
St. Peter	13:50	St. Peter	15:15
St. Paul	13:55	St. Paul	15:20
St. John	14:00	St. John	15:25
St. George	14:05	St. George	15:30
St. James	14:10	St. James	15:35
St. Peter	14:15	St. Peter	15:40
St. Paul	14:20	St. Paul	15:45
St. John	14:25	St. John	15:50
St. George	14:30	St. George	15:55
St. James	14:35	St. James	16:00
St. Peter	14:40	St. Peter	16:05
St. Paul	14:45	St. Paul	16:10
St. John	14:50	St. John	16:15
St. George	14:55	St. George	16:20
St. James	15:00	St. James	16:25
St. Peter	15:05	St. Peter	16:30
St. Paul	15:10	St. Paul	16:35
St. John	15:15	St. John	16:40
St. George	15:20	St. George	16:45
St. James	15:25	St. James	16:50
St. Peter	15:30	St. Peter	16:55
St. Paul	15:35	St. Paul	17:00
St. John	15:40	St. John	17:05
St. George	15:45	St. George	17:10
St. James	15:50	St. James	17:15
St. Peter	15:55	St. Peter	17:20
St. Paul	16:00	St. Paul	17:25
St. John	16:05	St. John	17:30
St. George	16:10	St. George	17:35
St. James	16:15	St. James	17:40
St. Peter	16:20	St. Peter	17:45
St. Paul	16:25	St. Paul	17:50
St. John	16:30	St. John	17:55
St. George	16:35	St. George	18:00
St. James	16:40	St. James	18:05
St. Peter	16:45	St. Peter	18:10
St. Paul	16:50	St. Paul	18:15
St. John	16:55	St. John	18:20
St. George	17:00	St. George	18:25
St. James	17:05	St. James	18:30
St. Peter	17:10	St. Peter	18:35
St. Paul	17:15	St. Paul	18:40
St. John	17:20	St. John	18:45
St. George	17:25	St. George	18:50
St. James	17:30	St. James	18:55
St. Peter	17:35	St. Peter	19:00
St. Paul	17:40	St. Paul	19:05
St. John	17:45	St. John	19:10
St. George	17:50	St. George	19:15
St. James	17:55	St. James	19:20
St. Peter	18:00	St. Peter	19:25
St. Paul	18:05	St. Paul	19:30
St. John	18:10	St. John	19:35
St. George	18:15	St. George	19:40
St. James	18:20	St. James	19:45
St. Peter	18:25	St. Peter	19:50
St. Paul	18:30	St. Paul	19:55
St. John	18:35	St. John	20:00
St. George	18:40	St. George	20:05
St. James	18:45	St. James	20:10
St. Peter	18:50	St. Peter	20:15
St. Paul	18:55	St. Paul	20:20
St. John	19:00	St. John	20:25
St. George	19:05	St. George	20:30
St. James	19:10	St. James	20:35
St. Peter	19:15	St. Peter	20:40
St. Paul	19:20	St. Paul	20:45
St. John	19:25	St. John	20:50
St. George	19:30	St. George	20:55
St. James	19:35	St. James	21:00
St. Peter	19:40	St. Peter	21:05
St. Paul	19:45	St. Paul	21:10
St. John	19:50	St. John	21:15
St. George	19:55	St. George	21:20
St. James	20:00	St. James	21:25
St. Peter	20:05	St. Peter	21:30
St. Paul	20:10	St. Paul	21:35
St. John	20:15	St. John	21:40
St. George	20:20	St. George	21:45
St. James	20:25	St. James	21:50
St. Peter	20:30	St. Peter	21:55
St. Paul	20:35	St. Paul	22:00
St. John	20:40	St. John	22:05
St. George	20:45	St. George	22:10
St. James	20:50	St. James	22:15
St. Peter	20:55	St. Peter	22:20
St. Paul	21:00	St. Paul	22:25
St. John	21:05	St. John	22:30
St. George	21:10	St. George	22:35
St. James	21:15	St. James	22:40
St. Peter	21:20	St. Peter	22:45
St.			



Time-Tables Quebec Central Ry. and Connections.  
TAKING EFFECT OCTOBER 1, 1894.

LOCAL TIME-TABLE.

READ UP.		STATIONS.		READ DOWN.	
No. 2 Express	No. 6 Mixed	No. 8 Mixed	Miles.	No. 1 Express	No. 5 Mixed
7:50	3:15	1:40	Ar. Sherbrooke	8:00	8:10
7:55	3:20	1:45	Ar. Newington	8:05	8:15
8:00	3:25	1:50	Ar. Ascot	8:10	8:20
8:05	3:30	1:55	Ar. East Angus	8:15	8:25
8:10	3:35	2:00	Ar. Dudswell Jct.	8:20	8:30
8:15	3:40	2:05	Ar. Dudswell Jct.	8:25	8:35
8:20	3:45	2:10	Ar. Dudswell Jct.	8:30	8:40
8:25	3:50	2:15	Ar. Dudswell Jct.	8:35	8:45
8:30	3:55	2:20	Ar. Dudswell Jct.	8:40	8:50
8:35	4:00	2:25	Ar. Dudswell Jct.	8:45	8:55
8:40	4:05	2:30	Ar. Dudswell Jct.	8:50	9:00
8:45	4:10	2:35	Ar. Dudswell Jct.	8:55	9:05
8:50	4:15	2:40	Ar. Dudswell Jct.	9:00	9:10
8:55	4:20	2:45	Ar. Dudswell Jct.	9:05	9:15
9:00	4:25	2:50	Ar. Dudswell Jct.	9:10	9:20
9:05	4:30	2:55	Ar. Dudswell Jct.	9:15	9:25
9:10	4:35	3:00	Ar. Dudswell Jct.	9:20	9:30
9:15	4:40	3:05	Ar. Dudswell Jct.	9:25	9:35
9:20	4:45	3:10	Ar. Dudswell Jct.	9:30	9:40
9:25	4:50	3:15	Ar. Dudswell Jct.	9:35	9:45
9:30	4:55	3:20	Ar. Dudswell Jct.	9:40	9:50
9:35	5:00	3:25	Ar. Dudswell Jct.	9:45	9:55
9:40	5:05	3:30	Ar. Dudswell Jct.	9:50	10:00
9:45	5:10	3:35	Ar. Dudswell Jct.	9:55	10:05
9:50	5:15	3:40	Ar. Dudswell Jct.	10:00	10:10
9:55	5:20	3:45	Ar. Dudswell Jct.	10:05	10:15
10:00	5:25	3:50	Ar. Dudswell Jct.	10:10	10:20
10:05	5:30	3:55	Ar. Dudswell Jct.	10:15	10:25
10:10	5:35	4:00	Ar. Dudswell Jct.	10:20	10:30
10:15	5:40	4:05	Ar. Dudswell Jct.	10:25	10:35
10:20	5:45	4:10	Ar. Dudswell Jct.	10:30	10:40
10:25	5:50	4:15	Ar. Dudswell Jct.	10:35	10:45
10:30	5:55	4:20	Ar. Dudswell Jct.	10:40	10:50
10:35	6:00	4:25	Ar. Dudswell Jct.	10:45	10:55
10:40	6:05	4:30	Ar. Dudswell Jct.	10:50	11:00
10:45	6:10	4:35	Ar. Dudswell Jct.	10:55	11:05
10:50	6:15	4:40	Ar. Dudswell Jct.	11:00	11:10
10:55	6:20	4:45	Ar. Dudswell Jct.	11:05	11:15
11:00	6:25	4:50	Ar. Dudswell Jct.	11:10	11:20
11:05	6:30	4:55	Ar. Dudswell Jct.	11:15	11:25
11:10	6:35	5:00	Ar. Dudswell Jct.	11:20	11:30
11:15	6:40	5:05	Ar. Dudswell Jct.	11:25	11:35
11:20	6:45	5:10	Ar. Dudswell Jct.	11:30	11:40
11:25	6:50	5:15	Ar. Dudswell Jct.	11:35	11:45
11:30	6:55	5:20	Ar. Dudswell Jct.	11:40	11:50
11:35	7:00	5:25	Ar. Dudswell Jct.	11:45	11:55
11:40	7:05	5:30	Ar. Dudswell Jct.	11:50	12:00
11:45	7:10	5:35	Ar. Dudswell Jct.	11:55	12:05
11:50	7:15	5:40	Ar. Dudswell Jct.	12:00	12:10
11:55	7:20	5:45	Ar. Dudswell Jct.	12:05	12:15
12:00	7:25	5:50	Ar. Dudswell Jct.	12:10	12:20
12:05	7:30	5:55	Ar. Dudswell Jct.	12:15	12:25
12:10	7:35	6:00	Ar. Dudswell Jct.	12:20	12:30
12:15	7:40	6:05	Ar. Dudswell Jct.	12:25	12:35
12:20	7:45	6:10	Ar. Dudswell Jct.	12:30	12:40
12:25	7:50	6:15	Ar. Dudswell Jct.	12:35	12:45
12:30	7:55	6:20	Ar. Dudswell Jct.	12:40	12:50
12:35	8:00	6:25	Ar. Dudswell Jct.	12:45	12:55
12:40	8:05	6:30	Ar. Dudswell Jct.	12:50	13:00
12:45	8:10	6:35	Ar. Dudswell Jct.	12:55	13:05
12:50	8:15	6:40	Ar. Dudswell Jct.	13:00	13:10
12:55	8:20	6:45	Ar. Dudswell Jct.	13:05	13:15
13:00	8:25	6:50	Ar. Dudswell Jct.	13:10	13:20
13:05	8:30	6:55	Ar. Dudswell Jct.	13:15	13:25
13:10	8:35	7:00	Ar. Dudswell Jct.	13:20	13:30
13:15	8:40	7:05	Ar. Dudswell Jct.	13:25	13:35
13:20	8:45	7:10	Ar. Dudswell Jct.	13:30	13:40
13:25	8:50	7:15	Ar. Dudswell Jct.	13:35	13:45
13:30	8:55	7:20	Ar. Dudswell Jct.	13:40	13:50
13:35	9:00	7:25	Ar. Dudswell Jct.	13:45	13:55
13:40	9:05	7:30	Ar. Dudswell Jct.	13:50	14:00
13:45	9:10	7:35	Ar. Dudswell Jct.	13:55	14:05
13:50	9:15	7:40	Ar. Dudswell Jct.	14:00	14:10
13:55	9:20	7:45	Ar. Dudswell Jct.	14:05	14:15
14:00	9:25	7:50	Ar. Dudswell Jct.	14:10	14:20
14:05	9:30	7:55	Ar. Dudswell Jct.	14:15	14:25
14:10	9:35	8:00	Ar. Dudswell Jct.	14:20	14:30
14:15	9:40	8:05	Ar. Dudswell Jct.	14:25	14:35
14:20	9:45	8:10	Ar. Dudswell Jct.	14:30	14:40
14:25	9:50	8:15	Ar. Dudswell Jct.	14:35	14:45
14:30	9:55	8:20	Ar. Dudswell Jct.	14:40	14:50
14:35	10:00	8:25	Ar. Dudswell Jct.	14:45	14:55
14:40	10:05	8:30	Ar. Dudswell Jct.	14:50	15:00
14:45	10:10	8:35	Ar. Dudswell Jct.	14:55	15:05
14:50	10:15	8:40	Ar. Dudswell Jct.	15:00	15:10
14:55	10:20	8:45	Ar. Dudswell Jct.	15:05	15:15
15:00	10:25	8:50	Ar. Dudswell Jct.	15:10	15:20
15:05	10:30	8:55	Ar. Dudswell Jct.	15:15	15:25
15:10	10:35	9:00	Ar. Dudswell Jct.	15:20	15:30
15:15	10:40	9:05	Ar. Dudswell Jct.	15:25	15:35
15:20	10:45	9:10	Ar. Dudswell Jct.	15:30	15:40
15:25	10:50	9:15	Ar. Dudswell Jct.	15:35	15:45
15:30	10:55	9:20	Ar. Dudswell Jct.	15:40	15:50
15:35	11:00	9:25	Ar. Dudswell Jct.	15:45	15:55
15:40	11:05	9:30	Ar. Dudswell Jct.	15:50	16:00
15:45	11:10	9:35	Ar. Dudswell Jct.	15:55	16:05
15:50	11:15	9:40	Ar. Dudswell Jct.	16:00	16:10
15:55	11:20	9:45	Ar. Dudswell Jct.	16:05	16:15
16:00	11:25	9:50	Ar. Dudswell Jct.	16:10	16:20
16:05	11:30	9:55	Ar. Dudswell Jct.	16:15	16:25
16:10	11:35	10:00	Ar. Dudswell Jct.	16:20	16:30
16:15	11:40	10:05	Ar. Dudswell Jct.	16:25	16:35
16:20	11:45	10:10	Ar. Dudswell Jct.	16:30	16:40
16:25	11:50	10:15	Ar. Dudswell Jct.	16:35	16:45
16:30	11:55	10:20	Ar. Dudswell Jct.	16:40	16:50
16:35	12:00	10:25	Ar. Dudswell Jct.	16:45	16:55
16:40	12:05	10:30	Ar. Dudswell Jct.	16:50	17:00
16:45	12:10	10:35	Ar. Dudswell Jct.	16:55	17:05
16:50	12:15	10:40	Ar. Dudswell Jct.	17:00	17:10
16:55	12:20	10:45	Ar. Dudswell Jct.	17:05	17:15
17:00	12:25	10:50	Ar. Dudswell Jct.	17:10	17:20
17:05	12:30	10:55	Ar. Dudswell Jct.	17:15	17:25
17:10	12:35	11:00	Ar. Dudswell Jct.	17:20	17:30
17:15	12:40	11:05	Ar. Dudswell Jct.	17:25	17:35
17:20	12:45	11:10	Ar. Dudswell Jct.	17:30	17:40
17:25	12:50	11:15	Ar. Dudswell Jct.	17:35	17:45
17:30	12:55	11:20	Ar. Dudswell Jct.	17:40	17:50
17:35	13:00	11:25	Ar. Dudswell Jct.	17:45	17:55
17:40	13:05	11:30	Ar. Dudswell Jct.	17:50	18:00
17:45	13:10	11:35	Ar. Dudswell Jct.	17:55	18:05
17:50	13:15	11:40	Ar. Dudswell Jct.	18:00	18:10
17:55	13:20	11:45	Ar. Dudswell Jct.	18:05	18:15
18:00	13:25	11:50	Ar. Dudswell Jct.	18:10	18:20
18:05	13:30	11:55	Ar. Dudswell Jct.	18:15	18:25
18:10	13:35	12:00	Ar. Dudswell Jct.	18:20	18:30
18:15	13:40	12:05	Ar. Dudswell Jct.	18:25	18:35
18:20	13:45	12:10	Ar. Dudswell Jct.	18:30	18:40
18:25	13:50	12:15	Ar. Dudswell Jct.	18:35	18:45
18:30	13:55	12:20	Ar. Dudswell Jct.	18:40	18:50
18:35	14:00	12:25	Ar. Dudswell Jct.	18:45	18:55
18:40	14:05	12:30	Ar. Dudswell Jct.	18:50	19:00
18:45	14:10	12:35	Ar. Dudswell Jct.	18:55	19:05
18:50	14:15	12:40	Ar. Dudswell Jct.	19:00	19:10
18:55	14:20	12:45	Ar. Dudswell Jct.	19:05	19:15
19:00	14:25	12:50	Ar. Dudswell Jct.	19:10	19:20
19:05	14:30	12:55	Ar. Dudswell Jct.	19:15	19:25
19:10	14:35	13:00	Ar. Dudswell Jct.	19:20	19:30
19:15	14:40	13:05	Ar. Dudswell Jct.	19:25	19:35
19:20	14:45	13:10	Ar. Dudswell Jct.	19:30	19:40
19:25	14:50	13:15	Ar. Dudswell Jct.	19:35	19:45
19:30	14:55	13:20	Ar. Dudswell Jct.	19:40	19:50
19:35	15:00	13:25	Ar. Dudswell Jct.	19:45	19:55
19:40	15:05	13:30	Ar. Dudswell Jct.	19:50	20:00
19:45	15:10	13:35	Ar. Dudswell Jct.	19:55	20:05
19:50	15:15	13:40	Ar. Dudswell Jct.	20:00	20:10
19:55	15:20	13:45	Ar. Dudswell Jct.	20:05	20:15
20:00	15:25	13:50	Ar. Dudswell Jct.	20:10	20:20
20:05	15:30	13:55	Ar. Dudswell Jct.	20:15	20:25
20:10	15:35	14:00	Ar. Dudswell Jct.	20:20	20:30
20:15	15:40	14:05	Ar. Dudswell Jct.	20:25	20:35
20:20	15:45	14:10	Ar. Dudswell Jct.	20:30	20:40
20:25	15:50	14:15	Ar. Dudswell Jct.	20:35	20:45
20:30	15:55	14:20	Ar. Dudswell Jct.	20:40	20:50
20:35	16:00	14:25	Ar. Dudswell Jct.	20:45	20:55
20:40	16:05	14:30	Ar. Dudswell Jct.	20:50	21:00
20:45	16:10	14:35	Ar. Dudswell Jct.	20:55	21:05
20:50	16:15	14:40	Ar. Dudswell Jct.	21:00	21:10
20:55	16:20	14:45	Ar. Dudswell Jct.	21:05	21:15
21:00	16:25	14:50	Ar. Dudswell Jct.	21:10	21:20
21:05	16:30	14:55	Ar. Dudswell Jct.	21:15	21:25
21:10	16:35	15:00	Ar. Dudswell Jct.	21:20	21:30
21:15	16:40	15:05	Ar. Dudswell Jct.	21:25	21:35
21:20	16:45	15:10	Ar. Dudswell Jct.	21:30	21:40
21:25	16:50	15:15	Ar. Dudswell Jct.	21:35	21:45
21:30	16:55	15:			

**JAS. W. PYKE AND CO.** 35 ST. FRANCOIS XAVIER ST. Montreal.

—REPRESENTATIVES FOR THE DOMINION OF CANADA—  
Of the Cast Steel Works of

**FRIED. KRUPP,**  
ESSEN, GERMANY.

Locomotive Tires, Axles, Crank-Pins, Cast Steel Driving Wheel Centres,  
Steel-Tired Wheels, Steel Forgings up to Seventy Tons.



PEOPLE of GOOD COMMON SENSE usually appreciate a good article that is honestly made, well finished and up to date. This explains the great success of

**GRANBY RUBBERS**  
They Wear like Iron.



—THE—  
**RED CROSS**  
Pharmacy,

Dispensing Pharmacy,  
Analytical Laboratory.

42 Fabrique Street,  
**QUEBEC.**

ESTABLISHED 1879. SHERBROOKE, P. Q.

**H. SAMUEL,**

Fine Dry Goods, Millinery, Carpets  
AND HOUSE FURNISHINGS. LARGEST ESTABLISHMENT IN THE EASTERN TOWNSHIPS

**THE CANADA PAINT CO.,**  
MONTREAL, TORONTO, VICTORIA.  
Manufacturers of High Grade  
VARNISHES, PAINTS AND COLORS.

DEPARTMENTS:  
Pure Colors, Dry and Oil. Carriage Colors in Japan. Varnishes, Interior and exterior. Wood Oil Stains, Japan and Lacquers. Ready Mixed Paints in Oil and Varnish. Oil Paint Colors, modern and antique. Water Tube Colors, Enamels. Canadian Magnetic Iron Oxide, the finest on the Continent.

**THE BISHOP Engraving and Printing Co.,**  
189 ST. JAMES STREET, MONTREAL  
ENGRAVERS On Steel, Copper, Stone, Wood, and by Photo Processes. LITHOGRAPHERS  
PRINTERS Book and Job. MANUFACTURING STATIONERS

*Walkers*

**Pure Candy**  
FOR SALE ON THIS TRAIN.  
Headquarters 231 St. James Street. Branch under Queen's Theatre, Montreal. Wholesale and Retail.

**AIRD'S CHERRY COUGH**  
(Registered) **DROPS**  
—MANUFACTURED BY—  
James M. Aird, Montreal

**THE BUSHNELL OIL CO. LTD.**

Make a Specialty

Railway, Signal and  
Cylinder

**OILS**

IMPORTERS AND—  
—DEALERS IN

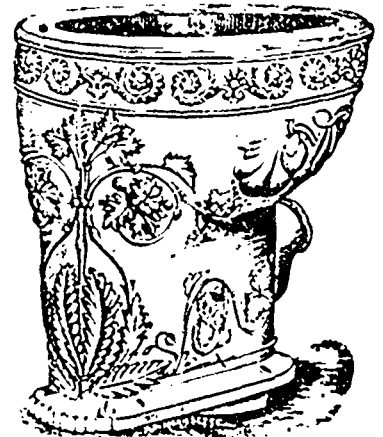
**PETROLEUM**

and its products.

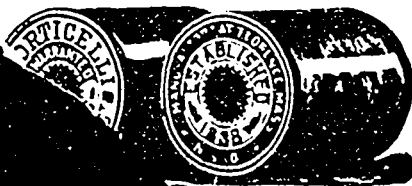
OFFICE: Board of Trade Building.

**Montreal.**

WAREHOUSE: Mile End.



**DOMINION SANITARY POTTERY CO.**  
St. Johns P. Q. | Bell Tel. No. 89  
Manufacturers of Closets, Traps, Plug Basins, Urinals and every kind of sanitary Earthenware. Sole makers of the Genuine Rich-Heu 'Jacet' registered No. 27 4741. Sample room No. 23 Temple Building, Montreal. Bell Telephone No. 2421



—CORTICELLI—

**Spool Silk**

Always ask for them.

Perrin's Gloves are the best  
**PERRIN'S**



**GLOVES**

SOLD BY ALL LEADING DEALERS  
ASK FOR THEM.

**WINE AND COCOA**

& CO., Montreal.

Company, established in Montreal, in view of the French treaty, are now offering the are equal to any \$6 and \$8 wines sold on their label. Every swell hotel and club perfectly pure and highly adapted for invalids use. Address, for Price List, etc., Hospital street, Montreal.

