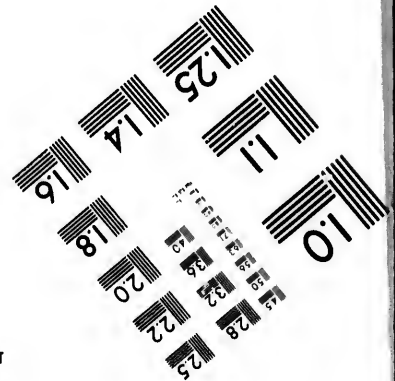
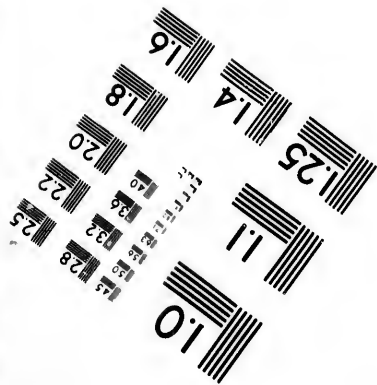
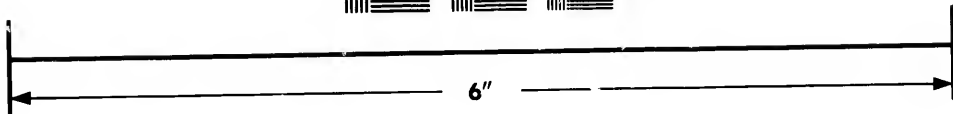
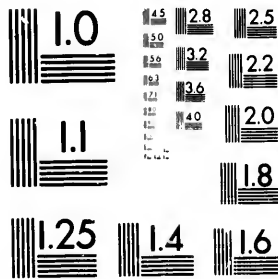


**IMAGE EVALUATION
TEST TARGET (MT-3)**



**Photographic
Sciences
Corporation**

23 WEST MAIN STREET
WEBSTER, N.Y. 14580
(716) 872-4503

23
24
26
28
30
32
34
36
20
18

**CIHM/ICMH
Microfiche
Series.**

**CIHM/ICMH
Collection de
microfiches.**



Canadian Institute for Historical Microreproductions / Institut canadien de microreproductions historiques

11
10
9
8
7
6
5
4
3
2
1

© 1982

Technical and Bibliographic Notes/Notes techniques et bibliographiques

The Institute has attempted to obtain the best original copy available for filming. Features of this copy which may be bibliographically unique, which may alter any of the images in the reproduction, or which may significantly change the usual method of filming, are checked below.

L'Institut a microfilmé le meilleur exemplaire qu'il lui a été possible de se procurer. Les détails de cet exemplaire qui sont peut-être uniques du point de vue bibliographique, qui peuvent modifier une image reproduite, ou qui peuvent exiger une modification dans la méthode normale de filmage sont indiqués ci-dessous.

- Coloured covers/
Couverture de couleur
- Covers damaged/
Couverture endommagée
- Covers restored and/or laminated/
Couverture restaurée et/ou pelliculée
- Cover title missing/
Le titre de couverture manque
- Coloured maps/
Cartes géographiques en couleur
- Coloured ink (i.e. other than blue or black)/
Encre de couleur (i.e. autre que bleue ou noire)
- Coloured plates and/or illustrations/
Planches et/ou illustrations en couleur
- Bound with other material/
Relié avec d'autres documents
- Tight binding may cause shadows or distortion along interior margin/
La reliure serrée peut causer de l'ombre ou de la distorsion le long de la marge intérieure
- Blank leaves added during restoration may appear within the text. Whenever possible, these have been omitted from filming/
Il se peut que certaines pages blanches ajoutées lors d'une restauration apparaissent dans le texte, mais, lorsque cela était possible, ces pages n'ont pas été filmées.
- Additional comments:/
Commentaires supplémentaires:

- Coloured pages/
Pages de couleur
- Pages damaged/
Pages endommagées
- Pages restored and/or laminated/
Pages restaurées et/ou pelliculées
- Pages discoloured, stained or foxed/
Pages décolorées, tachetées ou piquées
- Pages detached/
Pages détachées
- Showthrough/
Transparence
- Quality of print varies/
Qualité inégale de l'impression
- Includes supplementary material/
Comprend du matériel supplémentaire
- Only edition available/
Seule édition disponible
- Pages wholly or partially obscured by errata slips, tissues, etc., have been refilmed to ensure the best possible image/
Les pages totalement ou partiellement obscurcies par un feuillet d'errata, une pelure, etc., ont été filmées à nouveau de façon à obtenir la meilleure image possible.

This item is filmed at the reduction ratio checked below/
Ce document est filmé au taux de réduction indiqué ci-dessous.

10X	12X	14X	16X	18X	20X	22X	24X	26X	28X	30X	32X
<input type="checkbox"/>	<input type="checkbox"/>	<input type="checkbox"/>	<input checked="" type="checkbox"/>	<input type="checkbox"/>	<input type="checkbox"/>	<input type="checkbox"/>	<input type="checkbox"/>	<input type="checkbox"/>	<input type="checkbox"/>	<input type="checkbox"/>	<input type="checkbox"/>

The c
to the

The i
poss
of the
filmir

Origi
begin
the la
sion,
other
first p
sion,
or illu

The l
shall
TINU
which

Maps
differ
entire
begin
right
requi
meth

The copy filmed here has been reproduced thanks to the generosity of:

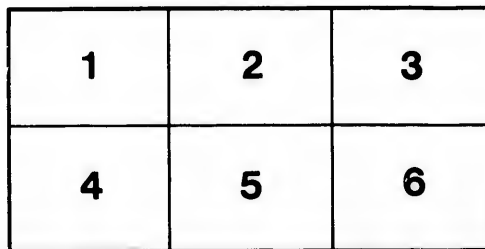
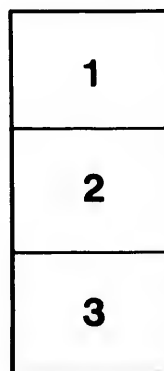
Metropolitan Toronto Library
Canadian History Department

The images appearing here are the best quality possible considering the condition and legibility of the original copy and in keeping with the filming contract specifications.

Original copies in printed paper covers are filmed beginning with the front cover and ending on the last page with a printed or illustrated impression, or the back cover when appropriate. All other original copies are filmed beginning on the first page with a printed or illustrated impression, and ending on the last page with a printed or illustrated impression.

The last recorded frame on each microfiche shall contain the symbol \rightarrow (meaning "CONTINUED"), or the symbol ∇ (meaning "END"), whichever applies.

Maps, plates, charts, etc., may be filmed at different reduction ratios. Those too large to be entirely included in one exposure are filmed beginning in the upper left hand corner, left to right and top to bottom, as many frames as required. The following diagrams illustrate the method:



L'exemplaire filmé fut reproduit grâce à la générosité de:

Metropolitan Toronto Library
Canadian History Department

Les images suivantes ont été reproduites avec le plus grand soin, compte tenu de la condition et de la netteté de l'exemplaire filmé, et en conformité avec les conditions du contrat de filmage.

Les exemplaires originaux dont la couverture en papier est imprimée sont filmés en commençant par le premier plat et en terminant soit par la dernière page qui comporte une empreinte d'impression ou d'illustration, soit par le second plat, selon le cas. Tous les autres exemplaires originaux sont filmés en commençant par la première page qui comporte une empreinte d'impression ou d'illustration et en terminant par la dernière page qui comporte une telle empreinte.

Un des symboles suivants apparaîtra sur la dernière image de chaque microfiche, selon le cas: le symbole \rightarrow signifie "A SUIVRE", le symbole ∇ signifie "FIN".

Les cartes, planches, tableaux, etc., peuvent être filmés à des taux de réduction différents. Lorsque le document est trop grand pour être reproduit en un seul cliché, il est filmé à partir de l'angle supérieur gauche, de gauche à droite, et de haut en bas, en prenant le nombre d'images nécessaire. Les diagrammes suivants illustrent la méthode.

THE
PARKDALE REGISTER:

CONTAINING

A HISTORY OF PARKDALE

FROM ITS INCORPORATION TO THE PRESENT TIME,

COMPRISING

OFFICIAL STATISTICS—POPULATION—CLIMATE—MUNICIPAL OFFI-
CERS AND DEPARTMENTS—RAILWAYS—CHURCHES—SCHOOLS
—SOCIETIES—PUBLIC, RELIGIOUS AND PHILANTHRO-
PIC INSTITUTIONS—LOCAL CELEBRITIES—
BUSINESS ANNOUNCEMENTS,

AND

AN ALPHABETICAL DIRECTORY

OF THE

INHABITANTS OF THE VILLAGE,

AND

PORTRAIT OF MAJOR GRAY, REEVE.

COMPILED AND EDITED BY JOHN G. SCOTT.

TORONTO, 1881:

BENGOUGH, MOORE & BENGOUGH, PUBLISHERS,
55 & 57 ADELAIDE STREET EAST.

Price five cents each.

WILLIAM FAHEY,

Broker, Insurance and General Financial Agent.

No. 9 Toronto St., Toronto.

RESIDENCE—Jameson Avenue, near King St., Parkdale.

AGENT FOR

“DOMINION”

Fire and Marine Insurance Company.

“ACCIDENT”

Insurance Company of North America.

“METROPOLITAN”

Plate Glass Insurance Company of New York

(The only Company having a deposit with the Dominion Government)

Insurances of all Kinds effected at Lowest
Rates.

Loans Negotiated. Estates Managed.

Some Very Fine Building Sites in Parkdale for Sale
on Easy Terms.

COAL delivered to all points at LOWEST RATES.

OFFICE : NO. 9 TORONTO ST.

(Opposite Old Post Office.)

HEY,

Financial Agent.

Toronto.

King St., Parkdale.

Insurance Company.

North America.

City of New York

(Incorporated in the State of New York)

Insured at Lowest

Rates Managed.

Available for Sale

BEST RATES.

TORONTO ST.

(Incorporated in the State of New York)



MAJOR JOHN GRAY,

REEVE OF THE VILLAGE OF PARKDALE.

Engraved specially for the "Parkdale Register," by Bengough, Moore & Bengough.

THE
PARKDALE REGISTER:

CONTAINING

A HISTORY OF PARKDALE

FROM ITS INCORPORATION TO THE PRESENT TIME,

COMPRISING

OFFICIAL STATISTICS—POPULATION—CLIMATE—MUNICIPAL OFFI-
CERS AND DEPARTMENTS—RAILWAYS—CHURCHES—SCHOOLS
—SOCIETIES—PUBLIC, RELIGIOUS AND PHILANTHRO-
PIC INSTITUTIONS—LOCAL CELEBRITIES—
BUSINESS ANNOUNCEMENTS,

AND

AN ALPHABETICAL DIRECTORY

OF THE

INHABITANTS OF THE VILLAGE,

AND

PORTRAIT OF MAJOR GRAY, REEVE.

COMPILED AND EDITED BY JOHN G. SCOTT.

TORONTO, 1881:
BENGOUGH, MOORE & BENGOUGH, PUBLISHERS,
55 & 57 ADELAIDE STREET EAST.

Price five cents each.

BR
971.354
.S18

May 11th 1961

P
th
is
T
th
pi
th
di
wo

by
a
an
pr
T
fo
fo
re
lai

th
no
cip
th
ca
th
me
To
the
a

PARKDALE.

THE Village of Parkdale is situated on the eastern side of Humber Bay, on the N. W. shore of Lake Ontario, in the Province of Ontario, Dominion of Canada. It is distant about three miles from St. Lawrence Hall in the City of Toronto, and is bounded north, by Brockton ; south, by Humber Bay ; east, by Toronto ; and west, by the Township of York. The site is higher than that of the major portion of Toronto, and is exceedingly picturesque, being surrounded by a landscape that possesses all the varying attractions afforded by the beautiful Ontario, and the diversified scenery of an undulating expanse of fertile country, wooded, watered, cultivated, and adorned with attractive homes.

THE BEGINNING.

The Toronto House Building Association becoming impressed by the advantages which the present site of Parkdale afforded as a place of residence, purchased, about six years ago, first twenty, and afterwards thirty, acres of land in this locality. They then procured the building of a sidewalk from the western limits of Toronto across the territory thus acquired, and proceeded to set forth the merits of their new enterprise. The result was the founding of a settlement, and in course of time several elegant residences were erected by the purchasers of lots. Streets were laid out, and a community began to form.

THE INCORPORATION.

In a few years this community increased greatly in numbers, and the people being progressive and independent, they determined not to amalgamate with Toronto, but to establish a separate municipality. It being ascertained that the population amounted to the number required by law, a meeting of the inhabitants was called, a vote taken, and incorporation decided upon. To effect this it was necessary to obtain a by-law from the local government of the County of York, and while this was being procured, Toronto made three vigorous but unsuccessful attempts to absorb the aspiring village. Parkdale was, however, incorporated in January, 1879, the Council and Officers being as follows :—

PARKDALE.

REEVE :

MAJOR J. GRAY.

COUNCILLORS:

J. B. DAVIS, ESQ. CHAS. FRANKISH, ESQ.
U. A. WALKER, ESQ. JOS. NORWICH, ESQ.

Solicitor—G. B. GORDON.*Treasurer*—J. S. LOCKIE. *Clerk*—J. B. MCLACHLAN.*Medical Health Officer*—DR. E. PLAYTER.*Assessors*—MESSRS. T. COLES and J. GOWANLOCK.*Collector*—ROBT. CLARKE.*Fence Viewers*—MESSRS. LIGHTFOOT, BEAUMONT, and YEARSLEY.*Road Overseer*—ROBT. BROWN.*Constables*—MESSRS. J. QUIN and ROBT. BROWN.*Pound-keeper*—ROBT. MOOR.

The Council and Officers for 1881 are as follows :—

REEVE :

MAJOR J. GRAY.

COUNCILLORS :

CHAS. FRANKISH, ESQ. J. THOMPSON, ESQ.
U. A. WALKER, ESQ. THOS. COLES, ESQ.

Solicitor—G. B. GORDON.*Treasurer*—J. S. LOCKIE. *Clerk*—J. B. MCLACHLAN.*Auditors*—W. FAHEY and F. WILSON.*Medical Health Officer*—DR. E. PLAYTER.*Assessor*—HUGH MACMATH.*Collector*—ROBT. CLARKE.*Fence Viewers*—MESSRS. LIGHTFOOT, BEAUMONT and YEARSLEY.*Road Overseer*—GEO. PEARCE.*Constables*—MESSRS. J. QUIN and G. PEARCE.*Pound-keeper*—HERMAN TIMMS.

The first Council were all re-elected the second year, but the next year Messrs. Davis and Norwich were not candidates.

IMPROVEMENTS.

Since its incorporation, Parkdale has steadily grown and progressed. Its progress has been greatly aided by the local improvement and frontage tax system, in accordance with which each man pays for the improvement in front of his own place alone. During the first year, seven miles of sidewalk and four miles of roadway were constructed. The sum of \$58,000 is being expended for drainage, and \$30,000 for water works. The debentures for the former outlay brought seven per cent premium, and

those for the latter eleven per cent. When the date of the debentures expires the debt is paid. The people are actually not in debt for such improvements, as they pay the interest every year and the sinking fund pays the debt.

The following summary of receipts and disbursements, compiled from the Auditor's Report for 1880, will prove interesting in this connection :

RECEIPTS.	
Assessed taxes collected 1879	\$ 881 63
" " " 1880	4,609 59
Debentures sold	13,509 56
From other sources	1,305 66
	\$20,306 44
DISBURSEMENTS.	
Balance due Treasurer 31st Dec. 1879	\$8,650 41
Debenture interest	1,114 08
Salaries and wages	1,083 46
School Board	1,723 72
Fire Department	443 05
Miscellaneous	1,206 53
Local improvements	5,544 67
Balance in hands of Treasurer	540 50
	\$20,306 44

The streets are regular, are kept in good repair, and are ornamented with young trees. The law to prevent cattle and hogs from running at large, is very stringent, and, as a consequence, the trees do not require boxes around them. Somewhat of a saving is thereby effected, as the boxes generally cost more than the trees. Every means of improvement that enlightened judgment can suggest, and judicious management effect, is employed to give Parkdale a deserved pre-eminence among the villages of the Dominion.

REAL ESTATE.

The condition of the real estate market in any community is a very reliable index of enterprise and progress. At the present time there is an unusually large amount of capital seeking investment in building, and, as a consequence, the real estate market in Parkdale is exceedingly active. This branch of business has also received an impetus from the steadily increasing desire of those whose avocations require them to spend much of their time amid the bustle of Toronto, of providing themselves with a quiet

KISH, ESQ.
CH, ESQ.

McLACHLAN.
YTER.
WANLOCK.

R, and YEARSLEY.

. BROWN.

OWS :—

MPSON, ESQ.
COLES, ESQ.

McLACHLAN.
ILSON.
AYTER.

CAUMONT and

E.
PEARCE.
S.

second year, but the
candidates.

lily grown and pro-
l by the local im-
rdance with which
his own place alone.
k and four miles of
8,000 is being ex-
works. The debent-
cent premium, and

home in an agreeable locality to which they can retire when business hours are over. The inducements which Parkdale offers to this class of persons is being better appreciated every day, and new residences are in constant course of erection. The prosperity of a place is not, however, always in proportion to the number of splendid edifices in which rich men live, but can be more accurately determined by the condition of the working and middle-classes. The unpretentious homes of the people, neat and comfortable, are undeniable evidences of general thrift and prosperity, and these are to be found in abundance in Parkdale.

The following statement will exhibit the assessed value of real and personal property for 1880 and 1881 :—

	1880.	1881.
Value of Real Property,	\$502,423	\$813,610
Taxable Income and Personal Property,	3,285	5,400
	<hr/>	<hr/>
	\$505,708	\$819,010

This is an increase of \$313,302 over last year. It will be remembered that the figures give merely the assessed value and not the real value, which is always much greater than the former.

POPULATION.

In 1879 the population was 785 ; by the last census it was 1183, but at present it may be safely estimated in round numbers at 1800, as it is continually increasing by the advent of new residents. These accessions to the community come from the industrial and prosperous classes, and are almost entirely people who select Parkdale as their home on account of its many inviting advantages of location either for residence or business. The inhabitants are intelligent and progressive in a high degree ; the cultured elements of society being liberally represented. Basing the estimate upon a consideration of the conditions of the growth of new places, it is within the limits of reasonable anticipation to predict that the population will reach 7,000 within five years.

CLIMATE.

The mean temperature of the year in Toronto, is 44° 4 ; Winter 26° 4 ; Summer 63° 8. These figures will serve very well for Parkdale, except that the heat of summer is tempered by the breezes from Lake Ontario which dispense a refreshing coolness that is lacking in the close and sultry city. It is well known that places situated near large bodies of water have a higher tempera-

an retire when busi-
n Parkdale offers to
l every day, and new

The prosperity of
n to the number of
can be more accu-
orking and middle-
ople, neat and com-
hrift and prosperity,
rkdale.

essed value of real

1880.	1881.
502,423	\$813,610
3,285	5,400
	<hr/>
505,708	\$819,010

ear. It will be re-
essed value and not
han the former.

t census it was 1183,
n round numbers at
ent of new residents.
m the industrial and
people who select
any inviting advan-
iness. The inhabi-
egree; the cultured
d. Basing the esti-
s of the growth of
able anticipation to
thin five years.

nto, is 44° 4; Win-
serve very well for
is tempered by the
a refreshing coolness
is well known that
ve a higher tempera-

ture in winter than those in the same latitude situated farther in-
land. This modifying circumstance has also its effect upon the
winter in Parkdale.

The place is not subject to malarial influences and is uncom-
monly healthy.

THE WATER WORKS.

These important works will be located at the western limit of the
village on the Lake shore road.

They will comprise an engine house, pumping house, and com-
pression chamber. The engines will be of forty-five horse power,
and will be built in Toronto, from designs brought from Port
Huron, Mich. The Holly system will be used, and the water
pumped from a large crib in the Lake, which will also serve as a
filtering basin, the water passing through ten feet of stone and
gravel before reaching the pumps. The conduit pipe will have
flexible joints, there will be close upon five miles of water mains,
and thirty-two double nozzle hydrants. The maximum capacity
of the works will be 2,000,000 gallons per day, and they will have
the power to throw six streams at a time.

The water works will be completed by the end of the year, and
will be under the supervision of Mr. John Patrick, who has been
appointed chief engineer and possesses the requisite ability to fill
his important position in an efficient manner.

ELECTRIC LIGHT.

During the coming year the electric light will be introduced
into Parkdale for the purposes of public and private illumination.
The motive power, which is the most expensive part of the ar-
rangement, can be secured through the liberal co-operation of Mr.
Essery, of the firm of Essery & Reid, whose Planing Mill is in the
immediate vicinity of the village and who will supply the requisite
steam power free. If so desired a vote of the people will be
taken in regard to the purchase of the remaining necessary ma-
terial.

The Council have received the following estimate of the cost of
material, etc. :

1 Wrought Iron Tower, 200 ft. high	- - - -	\$2,225
1 No. 5 machine	- - - -	1,200
4 Double 4,000 candle power lamps	- - - -	320
Freight, wire, etc	- - - -	200
		<hr/>
Total	- - - -	\$3,945

To this must be added 33% duty. The carbons cost \$6.25 per 100 or one cent per hour for each lamp. A power equal to that of six horses would be required to operate the above.

POLICE.

Two policemen, one for day and one for night service, are found sufficient for the preservation of good order.

FIRE DEPARTMENT.

The Fire Hall occupies a portion of the Public Hall building. The Fire Brigade consists of thirty-four volunteer firemen. The engine and hose-reel are of first-class manufacture, and the Brigade is thoroughly equipped for efficient service. The officers are as follows:—T. Coles, Chief; A. Craig, Captain; T. Booth, 1st Lieut.; E. Barwell, 2nd Lieut.; C. Toplis, 1st Branchman; J. Crawford, 2nd Branchman; T. Gander, 1st Engineer; G. Pierce, 2nd Engineer; U. A. Walker, Treas.; J. Beaumont, Secretary.

Last year the Brigade attended six fires, two of which were outside of the village. On the 1st of August last they had a grand social turn-out and a gala day generally.

RAILWAYS.

The following five lines of railway are in the immediate vicinity of Parkdale:—Grand Trunk, Great Western, Northern, Toronto, Grey & Bruce, and Credit Valley.

Manufacturers would find the contiguity of these railroads, and also of Lake Ontario, of great benefit, as they could ship their products either by rail or water. Manufacturers located on the west side of Toronto are beginning to realize the advantages which Parkdale affords in this particular, and the idea of erecting a large union station here is already entertained.

PUBLIC HALL.

This is a substantial brick edifice, built in an attractive style of architecture. The dimensions are 70 x 35 feet, and three stories high. One portion of the ground floor is occupied by the Fire Department. The remaining portion contains the Council Chamber, Committee Rooms, the Lock-up, the Safety Vault for public documents, &c., and G. G. Pursey's boot and shoe manufactory.

The Council Chamber is fitted up with every convenience suitable to the purposes for which it is used, and is elegantly but not extrav-

R. S. KING,

Groceries, Choice Teas,

Coffees, Spices.

CROSS & BLACKWELL'S

Pickles and Sauces

A SPECIALTY.

CANNED GOODS

Of all Descriptions.

Fruits and Confectionery.

OYSTERS IN THE SEASON.

All the Staples and Specialties

Of a General Grocery Business.

agantly furnished. The hangings are of a rich, crimson fabric, the chairs being upholstered to correspond. Each member of the Council is provided with a chair and desk. The Reeve's chair is very handsome, and on it are carved the village coat of arms with the motto "Progress and Economy," which is in keeping with the tenor of the municipal management. There is an appropriate desk for the clerk and a table for reporters. From the ceiling depends a graceful chandelier, and the whole chamber has been arranged with a regard for good taste and utility.

A spacious concert hall occupies the greater part of the second floor. The remainder is divided into rooms, in one of which the meetings of the New Church are at present held. It is expected that the other rooms on this floor will be devoted to the uses of the Mechanics' Institute.

On the third floor is the beautifully furnished hall of Alpha Lodge of Freemasons, No. 384, G.R.C. This is a "Blue" lodge, and the azure hue of the exquisite embellishments produces a delightful effect. On this floor is also a very neatly arranged hall, in which are held the meetings of the Odd Fellows, the Good Templars, the Royal Templars, and the Sons of England.

The Public Hall is admirably adapted for the purposes it subserves; it is well ventilated, and the attentive supervision of Mr. Cornelius Davis, the caretaker, keeps it in continual good order.

CHURCHES.

Each of the following churches has a large membership and a continually increasing attendance. Their Sunday-schools are actively conducted and are in a very flourishing condition.

ST. MARK'S CHURCH.

Services at 11 a. m., and 7 p. m. Sabbath-school at 3 p. m.
Rev. C. L. Inglis, Incumbent.

PARKDALE METHODIST CHURCH.

Services at 11 a. m., and 7 p. m. Sabbath-school at 2.30 p. m.
Rev. S. W. Campbell, B.D., Pastor.

PARKDALE PRESBYTERIAN CHURCH.

Services at 11 a. m., and 7 p. m. Sabbath-school at 3 p. m.
Rev. W. A. Hunter, Pastor.

THE MEDICAL HALL,

Queen Street, Parkdale.

G. A. DEVLIN,

Dispensing and Pharmaceutical Chemist.

IMPORTER AND DEALER IN

Pure Drugs and Chemicals,

French and English Perfumery,

English and American Patent Medicines,

Toilet Articles, Combs, Brushes, Sponges,

And Druggists' Sundries of Every Description.

Special Attention given to Physicians' Prescriptions.

Proprietor of the following proprietary medicines and preparations :



*Devlin's Pectoral Cough Mixture ; Devlin's Croup, Mixture ;
Devlin's Meloderma, for chapped hands, roughness of the
skin, sunburn, &c. ; Devlin's Rosemary Tonic
Solution, for the Hair.*

Fresh supplies of the following foreign preparations constantly received :

**Eno's Fruit Salt ; Candes' Antephehic Milk, for the complex-
ion ; Rimmel's Toilet Vinegar ; German and French
Cologne ; Hydroeline (Hydrated Oil) ; Lam-
plough's Pyretic Saline ; Valentine's
Meat Juice ; Liebig's Extract of
Meat ; Swiss Condensed
Milk ; etc., etc.**

Pure Wines and Liquors for Medicinal Purposes,

SCHOOL BOOKS AND STATIONERY.

 **OPEN DAY AND NIGHT.** 

Agency of the Montreal Telegraph Company..

SCHOOLS.

The public school building is a substantial structure, having a very pleasant location on Jameson Avenue. The school is graded and comprises four divisions. The principal is J. A. Wismer, Esq., who is assisted by Miss Warwick, Miss Somerville and Miss Dallas. The average attendance for the first half of the present year was about 180. At the last examination 42 certificates of honour were given, those receiving them having been neither absent nor late during the term. These certificates are very handsome and are highly prized by the recipients.

Particular attention is paid to English composition, letter writing and business forms. Free-hand blackboard drawing, map-drawing in colours, book-keeping, commercial arithmetic and vocal music are taught. The ordinary programme of common school studies is thus varied to advantage.

Mr. Wismer is an undergraduate of the second year of the University of Toronto, and took honours in classics, English and French. Before coming to Parkdale he taught three years in Streetsville, during one of which he was assistant master in the High School.

The lady teachers are well qualified, energetic and successful. The school is admirably conducted in all respects and is well appreciated by parents and pupils.

The "Howard-street School," Alexander Muir, B. A., teacher, has been until recently under the supervision of the Parkdale School Board. It is now attached to Brockton. Mr. Muir is an accomplished scholar and teacher.

THE SCHOOL BOARD

Consists of J. M. Wingfield, chairman ; J. Dickie, D. C. Walterhouse, J. Ellis, Dr. A. M. Lynd, and J. B. McLachlan, sec.

SOCIETIES.

FREEMASONS.

Alpha Lodge, No. 384, G. R. C., of Free and Accepted Masons, organized for work under a dispensation from the Grand Lodge, Oct. 7, 1880. July 2, 1881, it was consecrated and dedicated by the Most Worshipful Grand Master of Canada, James A. Henderson, Esq., of Kingston, Ont. The following are the officers : J. Gray, Parkdale, W. M. ; G. Tait, I. P. M. ; J. Verral, S. W. ; C. P. Sparling, J. W. ; W. Fahey, Secretary ; T. W. Rawlinson,

M. H. SMITH'S
Hairdressing Parlor,
 PARKDALE.

Hair Cutting, Shaving, Shampooing, Seafoaming, &c. Special attention given to dressing children's hair. Everything in the Tonsorial Art done to perfection.

One door west of Union Hotel, Queen st., Parkdale. A call solicited.

CENTRE FLOWERS. } **M. J. HYNES & BRO.,** { MANTEL PIECES.

Fine Plasterers,

88 YORK ST., OPPOSITE ROSSIN HOUSE, **TORONTO.**

PANEL CEILINGS. ENRICHMENTS.

DORLING & SON,

MERCHANT TAILORS AND GENTS' OUTFITTERS,

No. 3 Brick Block, West of Brockton Road, Parkdale.

First-class Cloth. First-class Trimmings. Honest Work. Stylish Cutting. Thirty years' experience. Best local references. "Small profits and quick returns." Call and judge for yourselves, gentlemen. Full Stock Fall Tweeds and Cloths. Everything you need in outfitting. "The Tailor makes the Man."

MRS. B. E. LEAMEN,

(Next door to Post Office)

Ladies' and Children's Underclothing. Gentlemen's Furnishing Goods. Dry Goods. Fancy Goods.

MILLINERY A SPECIALTY.

DR. A. M. LYND,

QUEEN STREET,

Coroner County of York.

DR. G. G. ROWE,

Member College Physicians and Surgeons, Ontario.

Graduate Toronto University,

PHYSICIAN TO HOME FOR INCURABLES.

structure, having a
 he school is graded
 is J. A. Wismer,
 omerville and Miss
 half of the present
 n 42 certificates of
 been neither absent
 are very handsome

osition, letter writ-
 drawing, map-draw-
 hmetic and vocal
 of common school

second year of the
 lassics, English and
 ight three years in
 tant master in the

ic and successful.
 cts and is well ap-

uir, B. A., teacher,
 a of the Parkdale
 a. Mr. Muir is an

kie, D. C. Walter-
 McLachlan, sec.

Accepted Masons,
 the Grand Lodge,
 and dedicated by
 la, James A. Hen-
 g are the officers :
 . Verral, S. W. ; C.
 T. W. Rawlinson,

Treasurer ; T. W. Rawlinson, Organist ; A. H. Welch, Chaplain ; A. Stuttaford, D. of C. ; T. Booth, S. S. ; J. Norwich, J. S. ; A. M. Lynd, M.D., S. D. ; W. Rankin, J. D. ; A. Craig, I. G. ; S. B. Hall, Tyler.

The lodge meets on the first Thursday in the month in its elegant lodge-room in the Public Hall, which is mentioned in the description of that building.

ODDFELLOWS.

Parkdale Lodge, No. 74, Canadian Order of Oddfellows, was organized May 16 1881, with twenty-seven members. Since that time its numbers have greatly increased, and it is now in a highly flourishing condition. Its officers are as follows : J. Norwich, P. N. G. ; E. J. Voss, N. G. ; J. Davies, V. G. ; S. Hobbs, Secretary ; J. Norwich, Treasurer ; A. H. Welch, Warden ; R. S. King, Conductor ; G. S. Booth, R. S. N. G. ; R. Raston, L. S. N. G. ; A. Barwell, R. S. V. G. ; E. Barwell, L. S. V. G. ; W. Ralston, I. G. ; H. Ferret, O. G. ; J. Barnes, P. G. Lecture Initiation Master. Meets every alternate Monday since May 16th.

SONS OF ENGLAND.

The Sons of England Benevolent Society, Somerset Lodge, No 10, meets the second and fourth Thursday in every month. The officers are : W. Goodman, President ; G. Pearce, Vice-President ; T. J. White, Secretary ; B. Goodman, Treasurer ; T. P. Worth, Chaplain. This lodge is rapidly increasing in numbers. The Order has only been established about six years, and has already over one thousand members in the Dominion.

ORANGEMEN.

Parkdale Orange Lodge, No. 207, meets the second Monday of each month.

J. Norwich, W. M. ; J. Burns, D. M. ; J. B. Davis, Sec. ; J. Gray, Treas. ; F. Pearce, Chaplain ; J. Syme, First C. M.

INDEPENDENT ORDER OF TEMPLARS.

Beacon Light Lodge, No. 7, meets Monday nights. U. A. Walker, W. C. T. ; J. Gander, Sec.

ROYAL TEMPLARS OF TEMPERANCE.

This total abstinence and mutual benefit organization is continually increasing in growth and influence. The Council in Parkdale meets every Tuesday evening. J. B. McLachlan, S.C.

TO CO

N

COR. OF

De

CUTL

Gu

Plea

UNE

E

TRU

Queen

THI

(Exam

ain ;
; A.
. B.
ele-
the

NOTICE
TO CONTRACTORS AND OTHERS.
NEW HARDWARE STORE.

was
ince
in a
Nor-
obs,
. S.
. S.
W.
tia-

John Wanless & Son,
COR. OF QUEEN ST. & BROCKTON ROAD, PARKDALE.

Dealers in Shelf and Heavy Hardware.

A GOOD ASSORTMENT OF
CUTLERY, GLASS, PAINTS AND OILS.

Guns, Revolvers, and Ammunition of all kinds.

No
The
nt ;
rth,
The
dy

Please Call and Examine.
UNDER THE BIG SLIPPER.

of
J.
A.

Boots, Shoes, Fancy Slippers,
TRUNKS, SATCHELS AND VALISES.

G. G. PURSEY,

*Queen St., second door west of Parkdale Hotel, and under the
Town Hall.*

THE PARKDALE PHARMACY

OPPOSITE ELM GROVE.

W. S. ROBINSON,

(Examiner in Practical Dispensing, Ontario College of Pharmacy)

—AND AT—

35 YONGE STREET, YORKVILLE.

n-
n

LIBERAL CONSERVATIVE ASSOCIATION.

This Association has an extensive membership. Major John Gray is President, and W. P. Atkinson, Esq., Secretary.

MAGDALENE ASYLUM.

This institution is managed by the Sisters of our Lady of Charity and Refuge, who are sometimes known as the Sisters of the Good Shepherd. The object of the Institution is the reclamation of unfortunate women. It is also a reformatory for small children Mother St. Aloysius is at present the Mother Superior.

MECHANICS' INSTITUTE.

Somewhere about a year ago the question of organizing a Mechanics' Institute was agitated. Money was subscribed and books purchased. The idea has not yet been fully consummated, but there is no doubt that before long the Mechanics' Institute will be an established fact. There is a great deal of literary, artistic and scientific culture in Parkdale, and the tastes of the community demanding intelligent gratification will cause the establishment of this and kindred institutions.

THE TORONTO HOME FOR INCURABLES.

The objects of this Institution are to afford maintenance, nursing, and medical and surgical aid to persons suffering from incurable disease, and to provide for them, while inmates of the Home, the ministrations of the Gospel.

The Home is a spacious brick edifice, having a delightful location in the vicinity of the Lake. The interior is bright and pleasant, and the inmates give evidence of being as happy as can be expected from those in their condition. The affairs of the Institution are under the management of a Board of which the majority are ladies. The Home is under the patronage of His Excellency the Governor-General (Marquis of Lorne) and Her Royal Highness the Princess Louise, and the following is the Board of Management: Rev. Dr. John Potts, President; Miss Dick, 1st Directress; Mrs. Manning, 2nd Directress; Mrs. John Kay, 3rd Directress; Mrs. Mulholland, Treasurer; Mrs. Cumberland, Secretary; Miss Gilmor, Assistant Secretary; Honorary Member—Mrs. J. B. Robinson; Life Members—Mrs. Foley, Mrs. Grant MacDonal. The Lady Superintendent is Mrs. A. Craigie, whose amiable disposition and business qualities render her peculiarly fitted to successfully perform the onerous duties of her trying position.

G E

QU

Sta

AGE

M

Ham

Pigs'

FR

Sul

WYLIE'S General Store

QUEEN ST., NORTH OF COWAN AVENUE.

Staple † Dry † Goods

— AND —

GROCERIES.

AGENT FOR THE LIQUOR TEA CO.

OF LONDON, ENGLAND.

DO SOLELY A CASH BUSINESS.

MRS. M. A. WATERS,

FAMILY BUTCHER,

AND DEALER IN

Hams, Bacon, Lard,

Corned Beef, Pickled Tongue,

Pigs' Feet, Tripe, Poultry,

Fruit and Vegetables.

FRESH SAUSAGE A SPECIALTY.

Substantials for Picnics and Suppers provided
at short notice.

LOCAL CELEBRITIES.

THE REEVE.

Major John Gray, the Reeve, is one of the most public-spirited men in Parkdale. His active and judicious influence has been most advantageously felt in the development of the village, and his management of municipal affairs has been in every sense beneficial to the best interests of the community.

Major Gray was born in Yorkville, York Co., Ontario, is Commander of the Toronto Field Battery, of which Corps he has been a member since 1856. He is also Vice President of the Toronto Electoral Division Society, Vice President of the Toronto Horticultural Society, a Director of the Toronto Industrial Exhibition Association, President of the West York Liberal Conservative Association, and holds other offices of trust and responsibility. He is proprietor of the Parkdale Nursery, the flourishing condition of which is due to his long practical and theoretical experience, and his assiduous personal attention.

Major Gray possesses the esteem and confidence of his fellow citizens. In his official capacity his administrative ability has manifested itself in a far-seeing but judicious and practical course of action which has made him deservedly popular. In private life he is a free-hearted, liberal-minded gentleman.

CHARLES G. MACBETH & BRO.

Mr. C. G. MacBeth is the son of the late John MacBeath, who was well and favourably known to the inhabitants of West Gwillimbury. The firm have two saw-mills in Simcoe County, and do an extensive lumber business. Mr. C. G. MacBeth, who is the oldest of the family, represents the business in Parkdale, and has a complete stock of every requisite in his line. He thoroughly understands the business, having been brought up to it from boyhood, and under his energetic management the business is growing fast.

CALEB WEEKS.

Mr. Weeks is from London, England, and has been for five years in the plumbing and gas-fitting business in Toronto. He is building a row of stores in a most advantageous position in the western part of Parkdale, in one of which he intends to engage in the above business. He is a man of great experience in all departments of his occupation, and his work is executed in a masterly manner.

J
Sot

Re

R E

Mon

Plu

E

For wh

hand.

J. C. MUSSEN,

AGENT

Sovereign Fire Insurance Co

Real Estate Bought,

SOLD OR EXCHANGED.

RENTS COLLECTED.

Money to Loan at Lowest Rates.


I AM NOW OPENING A

Plumbing & Gas-Fitting

STORE IN

Brick Block, Queen St.,

For which I have engaged the services of a First-class Workman.

 A Fine Assortment of Gas Fixtures always on hand. Satisfaction Guaranteed.

JOHN MAUGHAN, JR.

was among the first of the purchasers of real estate property in Parkdale. The satisfactory results of his investments prove that his confidence in the progress of the village was not misplaced. Mr. Maughan was acquainted with the present site of Parkdale long before it was built upon, and has shot many a good fat snipe where the principal business establishments now stand. He is the Agent for the Royal Insurance Co. of England.

R. S. KING,

Mr. King is one of those representative, enterprising business men, who are the pillars of every mercantile community. Possessing tact, foresight, and sterling unblemished honesty, such men are the elements of the assured prosperity which they not only promote but sustain. Mr. King came from Guelph to Parkdale about two years ago, having been in business both for himself and others in the former place since 1852. He established himself in the grocery line in Parkdale, and is doing a flourishing business. He will soon occupy a large new store which is in course of completion near the toll-gate. He is a native of Grimsby, Lincolnshire, England, and is familiar with both the dry-goods and grocery business.

MRS. M. A. WATERS

came recently from Guelph to Parkdale. In the former city she conducted the provision business, as set forth in her advertisement, for fifteen years, being widely and favourably known. She keeps a first-class stock of everything in her line, and deserves a liberal patronage.

J. T. COATSWORTH.

Mr. Coatsworth, who is a thoroughly reliable contractor and a first-class builder, was born in Toronto, in which city his father was well known as a builder whose work was always satisfactorily accomplished. Mr. Coatsworth has had a life-long experience in his business. He built the fine esplanade on the Lake front in Parkdale, and some elegant edifices testify to his skill and ability. He is erecting in all about thirty buildings this year. He is very careful in the selection of material, and gives to all his work that intelligent supervision which can only be bestowed by a fully competent man. Mr. Coatsworth is a resident of Parkdale, and his many good qualities make him a valuable acquisition.

J. T.

Bu

3

BRIC

Done

CO

J. T. COATSWORTH

Builder & Contractor

3 MELBOURNE AVENUE.

BRICK-WORK,
PLASTERING, AND
CARPENTER WORK

Done in a superior manner on the lowest terms.

CONTRACTS EXECUTED

With the utmost despatch.

DR. G. G. ROWE.

Dr. Rowe is a member of the Ontario College of Physicians and Surgeons, a graduate of the Toronto University and Physician to the Home for Incurables. He has become a resident of Parkdale during the present year, and his practice is rapidly growing.

WYLIE'S.

This establishment does solely a cash business in staple groceries and dry goods. The store will soon be enlarged, which shows that a strictly cash business can be made a success in Parkdale, if properly conducted. Wylie's have built west of the toll-gate, in what promises to be an important business locality. Their stock is well worth inspection, as their goods give satisfaction in every particular. They are agents for the Li-Quor Tea Co., whose gift books are becoming so widely appreciated.

G. A. DEVLIN

is a native of York Co., and a graduate of the Ontario School of Pharmacy. He served his time as a druggist in Yorkville and Toronto, thus acquiring a thoroughly practical knowledge of the drug business in all its details. Mr. Devlin recently received the appointment of Chemist to the Toronto Home for Incurables. He commenced business in Parkdale in August 1876, and in September 1880, his store was destroyed by fire. His energy was, however, too indomitable to succumb to such a misfortune. He erected a new building at a cost of \$5,000, and for completeness and elegance his store challenges comparison with any in Canada.

WM. STEWART

Is a builder whose operations have been extensive during the present season. He has great faith in the future of Parkdale, and is not only public-spirited, but sagacious and practical.

JOHN WANLESS & SON.

The senior partner of this firm has been in business in Guelph for several years. The firm has recently opened an extensive establishment in Parkdale, and their stock is not only well assorted, but complete in every particular. Mr. Wanless, Sr., has been a contractor for many years, and his experience makes him thoroughly acquainted with the qualities of hardware goods required by builders. The firm are located in the Mussen Block, just west of the toll-gate, and invite attention to their stock which includes both shelf and heavy hardware.

I
YAR
MI
CHAS. G.

Bu

Fo

COR

Fru

Cu

Pa

Gr

PA

MACBETH BROS.,
 (Late John McBeath)
L U M B E R.

(ESTABLISHED 1853.)

YARD, - - *Queen Street, Parkdale.*

MILLS - GILFORD { On Northern and North-
 PHELPHSTON { Western Railways.

CHAS. G. MacBETH, Parkdale.

WM. J. MacBETH, Gilford.

WILLIAM STEWART,
Builder and Contractor.

*Jobbing promptly attended to and Estimates
 Furnished.*

CORNER MARION ST. & O'HARA AVE.
 PARKDALE.

Fruit and Ornamental Trees

SHRUBS, ROSES, ETC.,

*Cultivated and For Sale by John Gray,
 AT THE*

Parkdale Nurseries

ESTABLISHED 1852.

JOSEPH A. WISEMAN,

Groceries, Provisions & Poultry,

Vegetables and Fruit.

PARKDALE and CITY EXPRESS.

Corner Jameson Avenue & Queen Sts.

BOOTH BROS.

The firm of Booth Bros., grocers, etc., consists of Geo S. & Thos. W. Booth, who are originally from Bolton Village, Albion. Their goods are of pure quality and high grade, and the demand for them is increasing so fast as to materially expand their business.

Mr. G. S. Booth was formerly foreman in Goderich of the largest flour mill in Canada. He was eighteen years of age when he commenced to work in the mill, and when twenty-one he was appointed foreman from among 125 hands working in the same establishment. This position he held until recently, when he entered into a co-partnership with his brother in Parkdale.

Mr. T. W. Booth has been ten years in the grocery business. During a portion of that time he was in business for himself in Toronto. On the 27th May, 1880, he had the misfortune to be burned out in Parkdale, and as he was not insured the calamity was enough to utterly discourage most young men. Mr. Booth, however, found that his integrity and sound business qualities had gained him friends. He was encouraged to start again, and upon his brother entering into partnership with him the business received a decided impetus.

The Booth Bros. are prominent examples of what Canadian young men are capable of accomplishing who possess good-sense, moral principles, and undaunted perseverance.

W. S. ROBINSON

is proprietor of the Parkdale Pharmacy, and has a similar establishment in Yorkville. Mr. Robinson is a druggist of extensive experience, and is examiner in practical dispensing in the Ontario College of Pharmacy.

M. J. HYNES & BRO.

This firm is located at 88 York St., Toronto, but as their line of business, which includes everything in ornamental plastering, is not represented in Parkdale, they are presented in the Register, and attention called to their advertisement. Their work is very artistic, and gives great satisfaction.

JOHN THORNTON

keeps a book store, and has also a varied stock which comprises crockery, tobacco, cigars, etc. He has been connected with the *Globe* newspaper office for many years and is a man of great reliability and sound practical judgment.

ESTABLISHED 1878.

—:O:—

The Leading Grocery House

IN PARKDALE.

—:O:—

BOOTH BROS.,

DEALERS IN

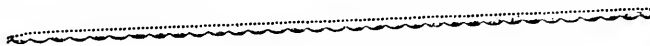
Groceries and Provisions,

Wine and Liquor Merchants.

—:O:—

Fine Teas and Pure Coffees

A SPECIALTY.



GEORGE S. BOOTH.

THOMAS W. BOOTH.

ESSERY & REID.

This firm, who are spoken of elsewhere in connection with the electric light, have an extensive planing and moulding establishment in the vicinity of Parkdale. They have done a great deal towards encouraging the establishment of manufactories on the west side of Toronto, and are supplying some of them with power. They have organized a Temperance Society in the neighbourhood of their establishment, of which about thirty of their employees have become members, and several since joining the Society have bought houses, built for them by Messrs. Essery & Reid, in which they and their families are now residing. The firm are public-spirited in a high degree, and are not only promoting their own welfare, but also that of others. Their business is increasing very fast, and such men certainly deserve prosperity.

SAMUEL HOBBS

comes from London, England, and has been in Parkdale four years. He is a first-class tinsmith, having learned his trade with C. T. Whatmough, of Toronto. His advertisement deserves attention. Mr. Hobbs is also the secretary of the Parkdale Lodge of Oddfellows.

G. G. PURSEY

has been but a few months in Parkdale, having removed there from Toronto, of which city he has been a resident for fifteen years. He is a native of Somersetshire, England. Mr. Pursey is a man of cultivated mind, and of no common order of literary ability. The spare time not occupied in business he devotes to literature and science, thus increasing his store of ideas and keeping his mental powers in active exercise. He is in the boot, shoe, and fancy slipper business, having two establishments in Parkdale, in one of which he manufactures. He makes a specialty of fancy slippers, and from long experience in the business is able to guarantee satisfaction in every particular. He is an active promoter of the project of establishing a Mechanics' Institute in Parkdale.

JOSEPH A. WISEMAN

is a native of Southampton, England. He has been two years in Parkdale, is engaged in the grocery and provision business, and manages the Parkdale and City Express. He is a very reliable young man, and his industrious habits have gained him much commendation.

THE
Shelf

First-Class
Stock

“H

Each Machine Warranted for

W

Our Ladies
mestic

Repairer

PARKDALE POST OFFICE.

THOMAS COLES,
HARDWARE MERCHANT.

Shelf and Heavy Hardware, Choice Cutlery,

Latest Designs in House Furnishings.

First-Class Paints, Oils and Varnishes. Lamp Goods. The Stock embraces the best quality of goods in every department.

It stands at the Head!

THE LIGHT-RUNNING

“DOMESTIC.”

Each Machine Warranted for
5 Years.



Each Machine Warranted for
5 Years.

IT IS } IMITATED BY ALL.
EQUALLED BY NONE.
THE EASIEST TO LEARN,
THE LIGHTEST TO RUN,
and consequently
THE BEST TO BUY.

Ladies, call and see it before purchasing elsewhere, and save time and money. Domestic Fashions for sale.

A. W. BRAIN, Sole Agent, 7 Adelaide St. E., Toronto.

Repairer of all kinds of Sewing Machines. Needles, Parts and Attachments for sale.

J. B. M'LACHLAN,

Clerk of the Council and Secretary of the School Board, is a native of Argyleshire, Scotland, but has been in Canada since early boyhood. He is a very painstaking, trustworthy man, and since coming to Parkdale about four years ago has identified himself with every movement tending to promote the moral and material prosperity of the village. He holds an excellent position in the office of the Provincial Secretary, Toronto, and his affable but unaffected manner wins the regard of all with whom he is brought into business or social contact.

HUGH MACMATH

has been engaged in the insurance and real estate business in Parkdale since March 1879. He has had a long experience in both these branches west of Toronto, and came to that city to take charge of the insurance department in the office of Morton, Watson and Co. His attention was attracted to the advantages Parkdale offered for business, and he determined to reside there. Mr. MacMath's estimable qualities have gained the confidence of his fellow citizens and he stands high in their regard. He is the Assessor of the municipality and performs the critical duties of that office to the satisfaction of all concerned.

THOMAS COLES

is Postmaster and has been in Parkdale about five years. He is the proprietor of a first class hardware store and does a very extensive trade. The business of the Post Office has rapidly increased, there being now about 150 boxes rented. Mr. Coles is a thorough business man. He is a member of the Council, Chairman of the Committee on Water Works and Electric Light, and Chief of the Fire Brigade. His abilities have been of great service in forwarding the improvements of the village.

DR. A. M. LYND

is the longest established physician in Parkdale, and is a graduate of the Toronto University of the year 1875. After graduating he became one of the resident assistant physicians of the Toronto General Hospital. The Doctor came to Parkdale from Bond Head, Simcoe Co., and his abilities have secured a most favourable recognition wherever he is known. He has a wide range of practice in Parkdale and vicinity.

is one of
dale. For
four year
time he
of the fir
Parkdale
and grow
exercise
he take
ing a r
has stea
opment
and ins
and has
Queen-
in the f
able qu
in whic
Musser
and the
the rap

This
and m
plete,
lady's
of a la

This
in the
attain
vasion
woun
gallan
spicio
the e
prom
ditor

J. C. MUSSEN

is one of the most energetic and enterprising citizens of Parkdale. He was born in Indiana, Haldimand Co., Ontario. About four years ago he removed from Toronto to Parkdale. At that time he held a position in the Toronto Post Office, but being one of the first to perceive the advantages which the present site of Parkdale afforded for the founding of a village that would thrive and grow, he resigned his position in the Post Office and has since exercised his energies in aiding the progress of the place in which he takes so deep an interest. He signed the first notice calling a meeting for the purpose of incorporating Parkdale, and has steadily devoted his time and abilities to furthering the development of the village. Mr. Mussen is engaged in the real estate and insurance business. He has built several houses in Parkdale, and has just completed the erection of a fine business block on Queen-street, west of the toll-gate. He has always had great faith in the future of the village, and is one of those men whose estimable qualities render them eminently serviceable to the community in which they reside. Prompt, industrious, and broadminded, Mr. Mussen is zealous in the prosecution of whatever he undertakes, and the effect of his indefatigable energy is clearly manifested in the rapid progress of Parkdale.

MRS. B. E. LEAMEN.

This lady conducts a very enterprising dry goods, fancy goods, and millinery establishment. Her stock is quite full and complete, including an excellent assortment of articles essential to a lady's wardrobe. Mrs. Leamen has the sincere respect and regard of a large circle of friends.

WILLIAM FAHEY.

This gentleman served with credit and distinction for ten years in the Queen's Own Rifles, and is now on the retired list, having attained the rank of Lieutenant. At the time of the Fenian invasion of Canada Mr. Fahey, who was then an Ensign, was wounded in the left knee, and taken prisoner at Limeridge. His gallant and meritorious conduct on that occasion made him conspicuous among the brave defenders of Canada. He was among the early settlers in Parkdale, and has been very instrumental in promoting the advancement of the village. He is one of the Auditors, and, although no office-seeker, takes a lively interest in

municipal affairs. He is also Auditor of the Commercial Travelers Association of Canada, and a delegate to the Synod from St. Mark's Episcopal Church. Mr. Fahey does an extensive insurance business, and represents several first-class companies.

A. W. BRAIN

has resided in Parkdale for nearly seven years, and has earnestly aided the progress of the village. He is an artizan and business man of a high grade of ability, and of extended experience. He is the Agent of the Domestic Sewing Machine, the great and striking peculiarity of which is its every-day character. It is a machine for use—not for show. Its superiority is seen in the work that has to be done in the family—not in useless and impracticable oddities. It needs no preparation, but is always ready. It does not get out of order, or break down, or refuse to work, but does all that is expected of it, and does it easily, quickly, and well. Mr. Brain also supplies needles for all kinds of machines, attachments, oil, threads, &c., and does repairing of all kinds of machines at short notice.

FIRE INSURANCE.

Insurance effected at Lowest Current Rates on application to

JOHN MAUGHAN, JR.,

GENERAL AGENT

“Royal Insurance Company” of England,

(Assets Twenty-three Million Dollars),

FOR CITY OF TORONTO AND COUNTY OF YORK.

OFFICES — Corner of Yonge and Wellington Streets, TORONTO.

W. H. ESSERY.

J. M. REID.

ESSERY & REID,

BUILDERS AND MANUFACTURERS OF

Sash, Doors, Blinds, Moulding & Flooring,

SHEETING, WOOD TURNING,

Band and Scroll Sawing, and general Joiner Work.

ALL WORK KILN DRIED.

Factory: Cor. Lisgar and Queen Sts., opposite Asylum, Toronto.

Pione

Dealer in

promptly

PLU

All bra

Bc

SCH
BLA
SEA
RO


Cr


Pioneer Tin, Iron and Copper Works.

Queen St., cor. West Lodge Avenue.

SAMUEL HOBBS,

Dealer in Stoves, Lamps, Oil and House Furnishings. Manufacturer and Importer of Tin, Copper and Galvanized Iron Work.

 Repairing in Plumbing and Gas Fitting and Eave-troughing promptly attended to.

 Best Grades of Canadian and American Oil always on hand.

CALEB WEEKS,

PLUMBING AND GAS FITTING.

—:0:—

All branches of work in every department of the above business, executed with dispatch and in a first-class manner.

TERMS REASONABLE.

J. THORNTON,

(Parkdale Weigh Scales, opp. Elm Grove.)

Bookseller and Stationer.

SCHOOL BOOKS,

BLANK BOOKS,

SEASIDE LIBRARY,

ROBERTSON'S LIBRARY,

IRVING'S 5-cent MUSIC,

FANCY GOODS,

VISITING CARDS,

BIRTHDAY CARDS,

Crockery and Glassware

TOBACCO, CIGARS, &c., &c.

DIRECTORY.

Abbs, Robt	Coatsworth, J T	Garbett, R	Horton, Samuel
Atkinson, W P	Colby, J C	Gardner, Capt	Hossack, Donld
Barnes, Jas	Coles, Thomas	Gaynor, W	Hughes, James
Barwell, Alfred	Postmaster	Giles, C	Hughes, J W
Barwell, Geo C	Cooley, Jos	Godfrey, W	Hunter, Rev W
Beaumont, Jas	Cox, Saml	Gooch, R N	Hunter, Robt
Beaty, Jno	Craig, Alex	Goodman, Benj	Hyssop, D
Beddome, W C	Cramsey, J D	Goodman, Wm	Inglis, Rev C L
Bell, Geo	Creighton, Jas	Goodman, Chris	Innes, F C
Bengough, Thos	Crawford, Jno	Goodwin, C M	Jackson, Jno
Bennet, Geo	Crowhurst, Misses	Goodwin, John	Johnson, Chas
Bernhard, M	Crowhurst, R J	Goodwin, J W	Jones, A F
Black, A E	Cummings, Jas	Gordon, G B	Jones, W R
Boardman, Geo	Culbert, Wm	Gowanlock, Jas	Judd, H W
Booth, T W	Crowhurst, F	Gowanlock, A G	Keeble, Jas
Booth, G S	Davis, Jas	Gray, M J	Kelley, Jas
Boyd, David	Davis, J B	Greenfield, S	Kennedy, R
Brain, S W	Devlin, G A	Greenfield, Sam	King, H T
Brayley, Robt C	Dickey, Joseph	Greenshields, R	King, R S
Breckenridge, Mrs	Dillon, H W	Gregory, A T	Kinzinger, Jac
Briggs, R J	Donaldson, R A	Gwynne, Miss E	Kinzinger, Ed J
Brine, H J	Dorling & Son	Hagerty, Mrs E	Kinnear, Philip
Briceland, P	Duff, Alex	Hall, Samuel E	Larmer, Wm W
Briggs, S R	Duff, jr., Alex	Hamilton, Wm	Lauder, A, MPP
Brown, David	Dwyer, James	Harris, J W	Lawson, Alex
Bullivant, Jas	Edwards, Geo	Harvey, Jno	Leamon, Jno
Burns, W R	Edwards, Mrs M	Henratty, J	Leamon, Mrs B
Butcher, W W	Elford, Uzziah	Hartly, Gilb	Lee, Wm
Bulchard, W N	Emeler, John	Helson, Walt	Lee, W S
Calverley, Mos.	Fahey, Wm	Heslopp, David	Lennox, Isaac
Calverley, Mrs E	Fair, S A	Hickey, Jas	Libby, Robt
Carroll, Jas M	Falkiner, H T	Hickey, Jno	Lightfoot, W J
Carthy, W	Fayle, V	Hilsdon, Jos	Lightfoot, Wm
Campbell, Rev T	Finch, Charles S	Hill, H J	Lightfoot, Chas
Chalk, Chas	Fitzgerald, Thos	Hilsdon, Jas	Lockie, J S
Chamberlain, T	Forbes, Benj	Hingston, W	Long, Geo
Chase, Mrs M A	Foster, James	Hobbs, Samuel	Lovell, Chas
Clark, Jno	Frankish, Chas	Home for Incur- ables, Mrs. C.	Lynch, Rd
Clark, Robt	Gale, Wm	Craigie, Mat.	Lynd, A M, MD
	Gander, Thos		McBeth, C G

Macdon
MacKen
MacMa
Malcol
Mansel,
May, Ja
Meads,
Middle
Middle
Miles,
Millmi
Mitche
Monro
Montgo
Moody
Moor,
Moor,
Moore
Moore
Moore
Morga
Morri
Mung
Mung
Muss
McB
McC
McC
McC
McH
McK
McK
McL
McL
McM
Mar
C
tion
of i
sud

Macdonnell, JG	Magdalene Asy-	Robinson, W S	Tunncliffe, Ch's
MacKenzie, W J	lum, Mother	Ronald, Jonat'n	Tarner, W J
MacMath, H	St. Aloysius,	Ronald, Jno W	Wadsworth, V S
Malcolm, Mick	Superioress.	Ronald, Wm M	Wadsworth V B
Mansel, C F	Nightingale, Jas	Rowe, Dr. G G	Walker, Robt
May, Jas W	Noble, Miss P B	Ruttan, Jesse W	Walker, Wm
Meads, Edw	Nerwich, Jos	Sabistun, Robt	Walker, U A
Middleton, Alex	Parker, J C	Saunders, Wm	Wanless, John
Middleton, W M	Partridge, E J	Shannon, Jas	Waterhouse, DC
Miles, Geo G	Patrick, Jno	Shewell, Jno T	Waters, Mrs M A
Millmine, Ch C	Pearce, Geo	Sharp —	Weeks, C
Mitchell, Wm	Peppiatt, P	Shaw, Sam	Welch, Mrs A H
Monro, W H	Pierce, Geo R	Smith, M H	Welch, A
Montgomery, Mrs	Platt, Wm	Smith, Jas	Westcott, John
Moody, Jno	Playter, Edw	Spaulding, A W	Wescott, Wm
Moor, C A	Ponsford, Wm	Sparling, C P	Westcott, Geo
Moor, R	Porter, Jas	Stevenson, Jas	Wey, Joseph
Moore, Joshua	Post, Wm	Stewart, Jno	White, Thos J
Moore, Thos	Post, Woodruff	Stewart, W M	Whitehouse, C J
Moore, Robt	Powis, Wm	Stuttaford, A J	Wingfield, J M
Moore, S J	Pursley, G J	Stuttaford, Mme	Wilcox, Walter
Morgan J C	Quin, Jno	Tat, Geo	Wilson, Fred
Morris, R	Raheley, J	Tait, Thos	Willmott, Geo
Munger, Mrs W	Raheley, G	Temple, S	Wilson, F
Munger, W A	Raheley, T	Thompson, Jno	Wiseman, Jos. A
Mussen, J C	Ramsey, W J	Truant Officer	Winn, Mrs D
McBeth, C G	Rankin, Jas	Tewsley, T C	Wood, Michael
McConnell, M	Rankin, Wm	Thompson, Mrs	Worth, T P
McCord, Wm	Rattan, Wm	Thompson, J T	Wright, James
McCreary, Jno	Rawlinson, Th's	Thompson, T A	Wright, Geo
McHardy, Jno	Rawlinson, T. W	Thornton, John	Wright, Robert
McKinley, Dan	Rawcliffe, Mrs	Timm, H	Wylie, Jas D
McKnight, And	Ray, Hen	Todd, T W	Wylie, D B
McLachlan, J B	Ray, W H	Toplis, Charles	Wylie, Mrs M J
McLean, Thos	Richardson, A	Tout, J E	Virtue, Mrs M
McMahon, H	Richmond, Ch's	Tulloch, Jas J	Yearsley, Robt
Mann, Jno	Ridout, D C	Tulloch, Stewa't	

Competent judges have estimated that in five years the population of Parkdale will be between 6,000 and 7,000. The sources of its future growth are reliable and do not depend upon any sudden influx caused by extensive speculation and advertising.

HUGH MACMATH,

BROKER,

Loan, Real Estate & Insurance,

FIRE AND LIFE.

—:—

**Norwich Union of England, Queen of England and
Union Fire Insurance Company.**

—;—

The Standard Life Assurance Company, of Edinburgh,
Scotland, Invested Funds nearly \$26,000,000. Over
\$1,000,000 Special Investment in Canada.

—:—

BOOKS WRITTEN UP & ACCOUNTS MADE OUT

—o:—

LOANS PUT THROUGH AT SHORT NOTICE.

—:—

Parties wishing to Sell or Purchase Property in Parkdale, west end of
Toronto, or adjacent localities, will find this office more con-
venient than any City Office, it being immediately in
the vicinity, and where every information can
be had and parties shown property.

South Side Queen St., PARKDALE, ONT.

“T

Hea

CA

Depo

Being

Presia

H

J

L

P

G. E

Insur

"THE SOVEREIGN"

FIRE INSURANCE CO.

Head Office—16 Wellington St. E.,

TORONTO.

CAPITAL, - \$600,000.00,

With power to increase to \$1,000,000.00.

Deposit with Dominion Government, (market value), \$124,711.52,

Being the Second largest Fire Deposit of any Foreign or Home Insurance Company in Canada.

DIRECTORS:

President—Hon. Alex. Mackenzie, M.P. *Vice Pres.*—Geo. Greig, Esq.

Hon. W. McMaster.

J. G. Scott, Esq.

L. W. Smith, Esq., D.C.L.

P. D. Angus, Esq.

G. R. R. Cockburn, Esq.

J. D. Irwin, Esq.

Robert Jaffray, Esq.

S. Nordheimer, Esq.

John Walker, Esq. London.

G. BANKS, *Acting Manager.* J. C. MUSSEN, *City Agent.*

Insurance against Fire effected at Lowest Current Rates. Farm Property Insured on very Favorable Terms.

BENGOUGH, MOORE & BENGOUGH,

Printers and Publishers,

Designers, † Engravers, † Zincographers,

Stereotypers, Lithographers, &c.,

55 and 57 Adelaide Street East, Toronto.

We have pleasure in informing our numerous friends and customers that we have formed a co-partnership, comprising J. W. BENGOUGH, of the late firm of Bengough Brothers, and SAMUEL J. MOORE and THOS. BENGOUGH, of the late firm of Bengough, Moore & Co., under the name, style and firm of BENGOUGH, MOORE & BENGOUGH, and are in a position to execute, with promptness and at reasonable prices, all kinds of printing and engraving. We possess facilities superior to those of any house in Canada for producing engravings from original designs, also from photography, lithography and steel.

Business men will find in our office many advertising novelties of great value. In addition to facilities for producing new engravings, we have a large and varied stock of plates and cuts, easily adaptable to the wants of customers.

We are prepared to estimate on printing and artistic work of all kinds.

→** ESTIMATES † CHEERFULLY † FURNISHED **←

—: VISITORS WELCOMED. :—

We publish GRIP, Canada's independent, satirical and humorous journal, \$2 per annum in advance; THE SHORTHAND WRITER—a magazine for all interested in shorthand, learners and experts; THE BRITISH-AMERICAN WORKMAN—an illustrated paper for the masses; THE FAMILY FRIEND, and other papers for business men.

Bengough, Moore & Bengough,

55 and 57 Adelaide St. East, Toronto.

J. W. BENGOUGH.
S. J. MOORE.
THOS. BENGOUGH.

BENGOUGH,

ers,

ographers,

, &c.,

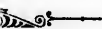
, Toronto.

customers that we
of the late firm
BENGOUGH, of the
and firm of BEN-
cute, with prompt-
ing. We possess
ducing engravings
nd steel.

novelties of great
s, we have a large
the wants of cus-

work of all kinds.

FINISHED ❖❖❖←



humorous journal,
TER—a magazine
THE BRITISH-
ne masses ; THE

ngough,

Toronto.

