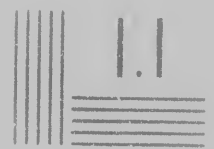
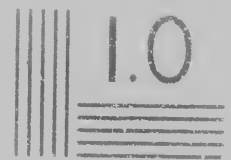
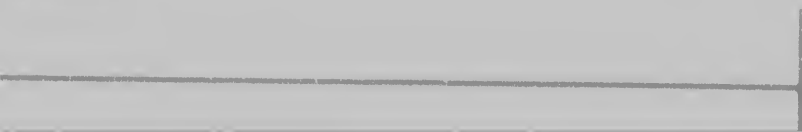
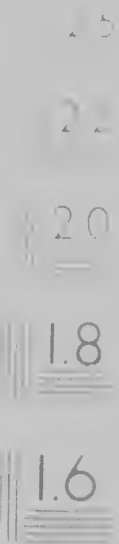
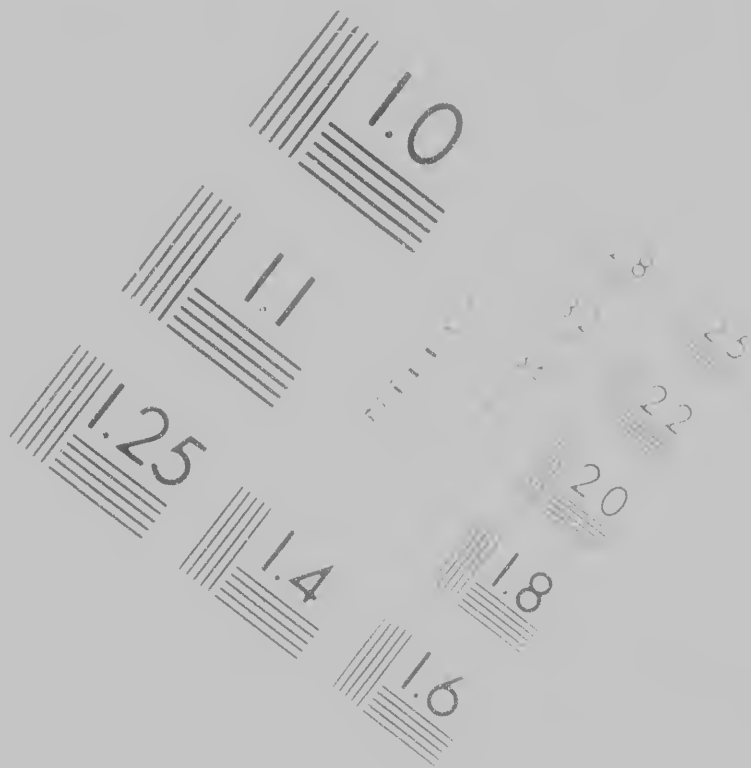


IMAGE EVALUATION  
TEST TARGET



ATION  
MT-3)



**CIHM/ICMH  
Microfiche  
Series.**

**CIHM/ICMH  
Collection de  
microfiches.**



The copy filmed here has been reproduced thanks to the generosity of.

Library of Congress  
Photoduplication Service

The images appearing here are the best quality possible considering the condition and legibility of the original copy and in keeping with the filming contract specifications.

Original copies in printed paper covers are filmed beginning with the front cover and ending on the last page with a printed or illustrated impression, or the back cover when appropriate. All other original copies are filmed beginning on the first page with a printed or illustrated impression, and ending on the last page with a printed or illustrated impression.

Maps, plates, charts, etc., may be filmed at different reduction ratios. Those too large to be entirely included in one exposure are filmed beginning in the upper left hand corner, left to right and top to bottom, as many frames as required. The following diagrams illustrate the method:

L'exemplaire filmé fut reproduit grâce à la  
générosité de :

Library of Congress  
Photoduplication Service

Les images suivantes ont été reproduites avec le  
plus grand soin, compte tenu de la condition et  
de la netteté de l'exemplaire filmé, et en  
conformité avec les conditions du contrat de  
filmage.

Les exemplaires originaux dont la couverture en  
papier est imprimée sont filmés en commençant  
par le premier plat et en terminant soit par la  
dernière page qui comporte une empreinte  
d'impression ou d'illustration, soit par le second  
plat, selon le cas. Tous les autres exemplaires  
originaux sont filmés en commençant par la  
première page qui comporte une empreinte  
d'impression ou d'illustration et en terminant par  
la dernière page qui comporte une telle  
empreinte.

Les cartes, planches, tableaux, etc., peuvent être  
filmés à des taux de réduction différents

Lorsque le document est trop grand pour être  
reproduit en un seul cliché, il est filmé à partir  
de l'angle supérieur gauche, de gauche à droite,  
et de haut en bas, en prenant le nombre  
d'images nécessaire. Les diagrammes suivants  
illustrent la méthode.

Technical and Bibliographic Notes/Notes techniques et bibliographiques

The Institute has attempted to obtain the best original copy available for filming. Features of this copy which may be bibliographically unique, which may alter any of the images in the reproduction, or which may significantly change the usual method of filming, are checked below

L'Institut a microfilmé ce qu'il lui a été possible de cet exemplaire qu'il a jugé de ce point de vue bibliographique. Les caractéristiques d'une image reproduite qui nécessitent une modification dans la méthode habituelle de microfilmage sont indiquées ci-dessous.

Coloured covers/  
Couverture de couleur

Coloured pages  
Pages de couleur

Covers damaged/  
Couverture endommagée

Page damaged  
Pages endommagées

Covers restored and/or laminated/  
Couverture restaurée et/ou pelliculée

Pages restored  
Pages restaurées

Cover title missing/  
Le titre de couverture manque

Pages discoloured  
Pages décolorées

Coloured maps/  
Cartes géographiques en couleur

Pages detached  
Pages détachées

Coloured ink (i.e. other than blue or black)  
Encre de couleur (i.e. autre que bleue ou noire)

Showthrough  
Transparence

Coloured plates and/or illustrations/  
Planches et/ou illustrations en couleur

Quality of print  
Qualité inégale

Bound with other material/  
Relié avec d'autres documents

Includes supplementary material  
Comprend du matériel supplémentaire

Tight binding may cause shadows or distortion along interior margin/  
La reliure serrée peut causer de l'ombre ou de la

Only edition available  
Seule édition disponible

phiques

le meilleur exemplaire  
de se procurer. Les détails  
sont peut être uniques du  
hique qui peuvent modifier  
ou qui peuvent exiger une  
méthode normale de filmage  
us

ees

d. or laminated  
et. ou pelliculees

stained or foxed  
tachetees ou piquees

ries

l'impression

entary material  
eriel supplémentaire

ble  
onible







# ADDRESS

## To the Inhabitants of the Province of CANADA.

MR. GEN. MCCLELLAN, commanding on the Niagara frontier, finds the Province deserted by the British army and abandoned by its government—In the peculiar situation of the inhabitants, it is essential to their security that some regulation should be established for their government, while the American Army has the power of enforcing them. The General regrets to say, that illegal, unauthorized and forbidden violence has been committed by a few, who are lost to all honor and insensible of the obligations of a soldier. To arrest such practices, to afford all the protection in his power, and to ensure safety to the property and persons of the inhabitants who are now under his control, the General has issued this address.

The employment of the Indians has been a source of extreme regret to the General. But finding them called out by the government of the United States, and as he is to attack an army who had long employed them in scenes of a

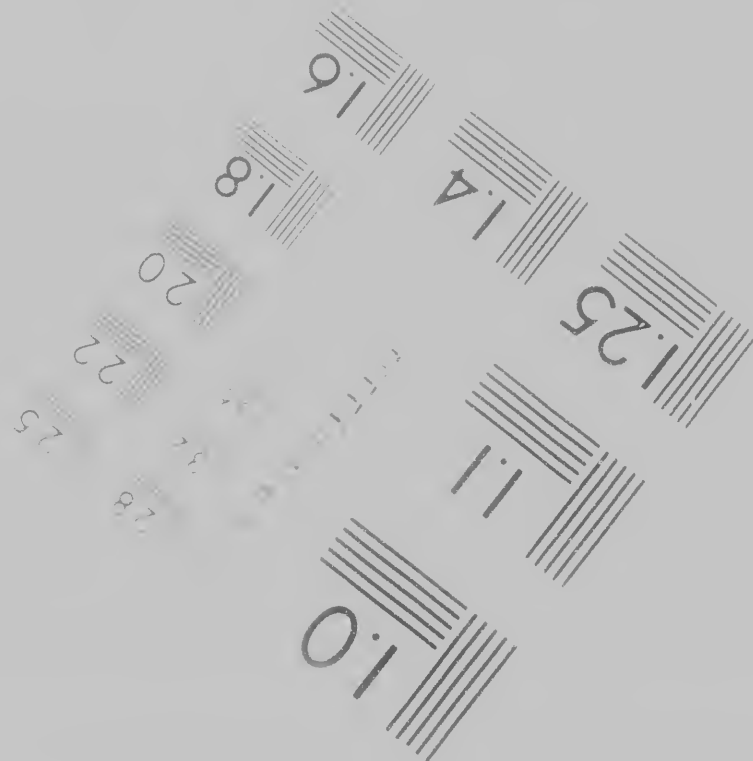
ceased to exist, the the American side of the reach of temptations justifies them. The relation to the honor of our reputation of the Gen of the Indians. Exhibits of Canada may expect from A and clemency.

To insure that inhabitants have a firm—let them let them abstain ions with the Brit at home quietly vions. Those who will incur the penal law. The cha are institutions, which to of security and changes rates will the mechanics of their servators of the pe able, they will pre

Upper

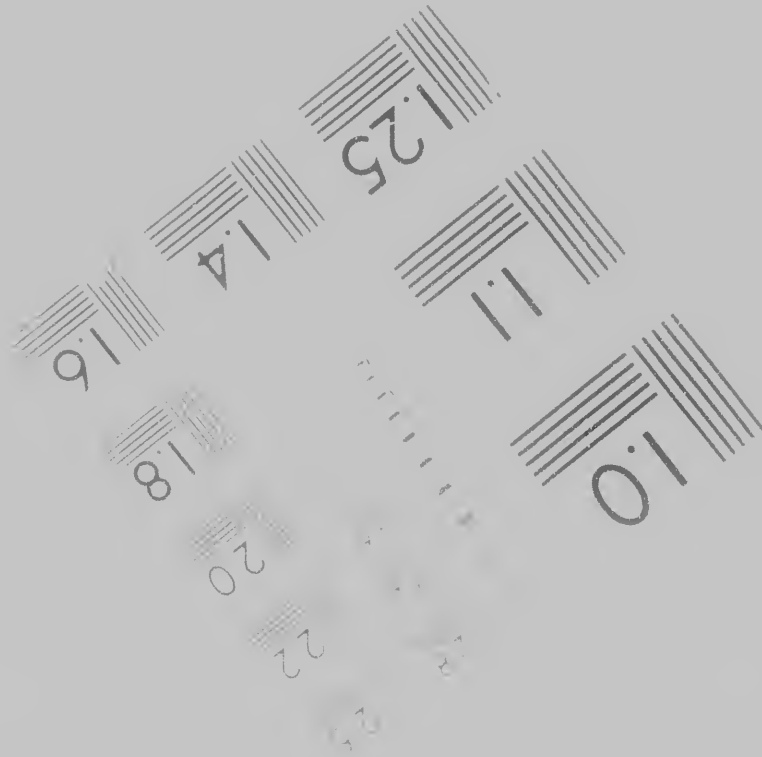
... cases were sent to  
the river, ...  
... to wait until ...  
... another call upon  
... of these facts is d  
... eriment, to the r  
... and to the me  
... would also, the  
... day ...  
... erican forbearance

... bearance, the in  
... easy duty to per  
... perfectly neutral,  
... from communica  
... army and remain  
... suing their associa  
... contract differently  
... es of rigorous mar  
... eter of our free re  
... and the nature of  
... justify your expec  
... protection—All cit  
... time to service the  
... ces, merely as con  
... as far as they are  
... order and quiet

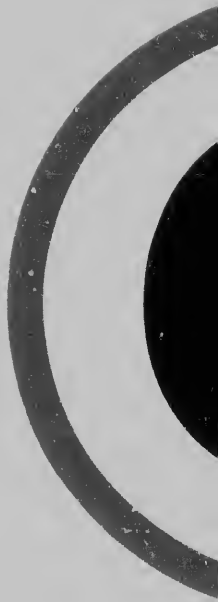


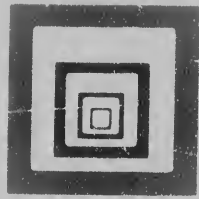
Photographic  
Sciences  
Corporation

Canadian Ins



23 WEST MAIN STREET  
WEBSTER N Y 14580  
716 872 4503





Institute for Historical Microreproductions / Institut canadien de microreproduction

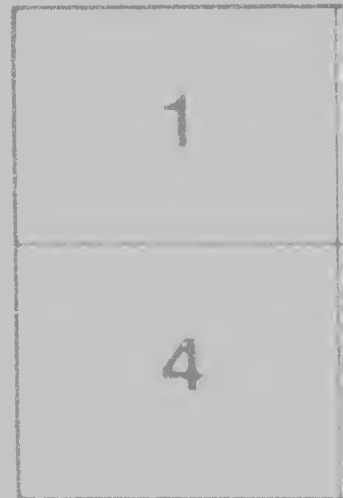
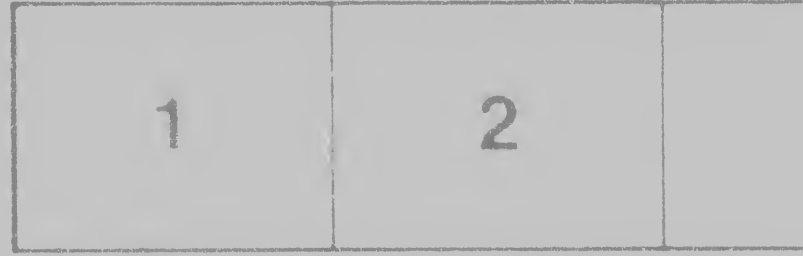
© 1988

historiques

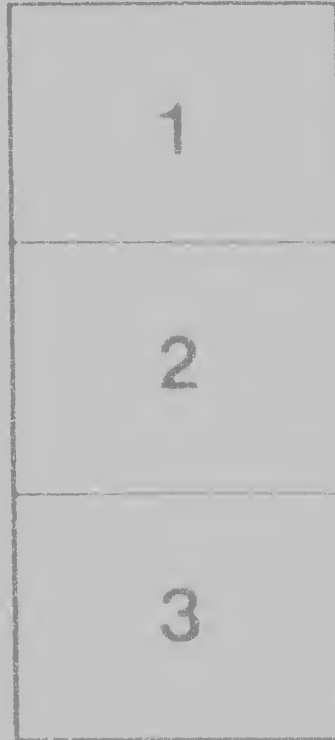
3



required. The following diagrams illustrate the method:



et de haut en bas, en prenant le nombre d'images nécessaire. Les diagrammes suivants illustrent la méthode



Ω  
Ce  
10  


Tight binding may cause shadows or distortion along interior margin/  
La reliure serrée peut causer de l'ombre ou de la distorsion le long de la marge intérieure

Blank leaves added during restoration may appear within the text. Whenever possible, these have been omitted from filming/  
Il se peut que certaines pages blanches ajoutées lors d'une restauration apparaissent dans le texte mais lorsque cela était possible, ces pages n'ont pas été filmées

Additional comments  
Commentaires supplémentaires

UHM 100 60307

- Only edition available  
Seule édition disponible
- Pages wholly or almost wholly obscured by slips, tissues, etc. It is desired that you ensure the best possible reproduction. Les pages totalement ou presque totalement obscurcies par un feuillet, du papier, etc. ont été filmées de façon à obtenir la meilleure reproduction possible.

Item is filmed at the reduction ratio checked below  
Document est filmé au taux de réduction indiqué ci-dessous

<input type="checkbox"/>	<input type="checkbox"/>	<input type="checkbox"/>	<input type="checkbox"/>	<input type="checkbox"/>	<input type="checkbox"/>
12X	14X	16X	18X	20X	22X
					24X
					26X

ble  
onible

rtially obscured by error  
have been retimed to  
ssible image  
nt ou partiellement  
euillet d'errata une petite  
s à nouveau de façon à  
image possible

30x



28x

32x





to the government of the United States  
and to the army who  
had long watched them in scenes of  
cruelty and outrage which humanity  
had never before driven to the only al-  
ternative left of using the same wea-  
pon against our enemies which they had  
used against ourselves — That the Brit-  
ish army had abandoned their encamp-  
ments and fled before the American  
troops does not weaken the necessity  
which they stand in of employing the  
British arms to be known that the enemy  
is about to do. At the same time, it is  
doubtful whether or not the Indians have  
been so far from their homes as to be  
able to do any harm to the American  
troops. It is also to be remembered that  
the British arms which have been taken  
by the Indians are not the same as those  
which have been taken by the British  
troops. The British arms which have  
been taken by the Indians are the same  
as those which have been taken by the  
British troops. The British arms which  
have been taken by the Indians are the  
same as those which have been taken  
by the British troops. The British arms  
which have been taken by the Indians  
are the same as those which have been  
taken by the British troops. The British  
arms which have been taken by the  
Indians are the same as those which  
have been taken by the British troops.

inquiries into the  
conduct of their  
servants of the peo-  
ple, they will pro-  
ceed among the inhab-  
itants of the United  
States the public pe-  
ace with the regular  
be considered in  
cases are taken,  
particularly requir-  
ing a Head Quarters  
admitted by Ameri-  
cans unless they are in  
order. The Gen-  
erals to submit to  
those who refuse  
to do so. The  
admiral General  
who are disposed  
to and neutral, to  
and their business  
complete security  
as his power exten-  
sion, the unfor-  
ed

**GEO.**  
Commander  
Head Quarters,  
George, Oct.

... as far as they are  
... order and quiet  
... The existing  
... as far as they re  
... and not interfere  
... ons of the army, will  
... and other mea  
... magistrates are  
... to give information  
... all violences com  
... troops on citizens  
... rized by a written  
... ed epistle, the inhab  
... if magistrates can  
... allence must be re  
... racters. The King  
... all the Britons  
... be peaceable, and re  
... turn to their homes  
... He cannot promise  
... can be engaged as yet  
... to protect the in  
... in to and the distress

DECLARATION  
of the Magistrates of the  
County of ...  
1755