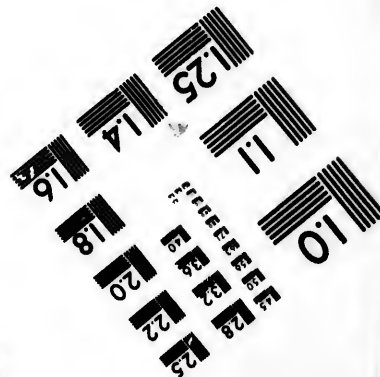
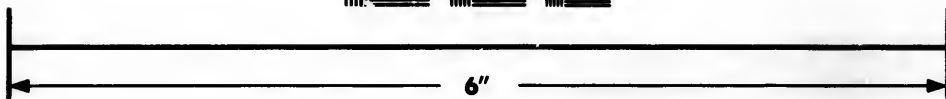
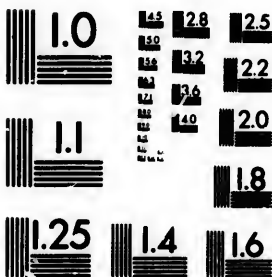


**IMAGE EVALUATION
TEST TARGET (MT-3)**



**Photographic
Sciences
Corporation**

23 WEST MAIN STREET
WEBSTER, N.Y. 14580
(716) 872-4503

128
125
122
120
118

**CIHM/ICMH
Microfiche
Series.**

**CIHM/ICMH
Collection de
microfiches.**



Canadian Institute for Historical Microreproductions / Institut canadien de microreproductions historiques

11
10
9
8
7
6
5
4
3
2
1

© 1985

Technical and Bibliographic Notes/Notes techniques et bibliographiques

The Institute has attempted to obtain the best original copy available for filming. Features of this copy which may be bibliographically unique, which may alter any of the images in the reproduction, or which may significantly change the usual method of filming, are checked below.

L'institut a microfilmé le meilleur exemplaire qu'il lui a été possible de se procurer. Les détails de cet exemplaire qui sont peut-être uniques du point de vue bibliographique, qui peuvent modifier une image reproduite, ou qui peuvent exiger une modification dans la méthode normale de filmage sont indiqués ci-dessous.

- Coloured covers/
Couverture de couleur
- Covers damaged/
Couverture endommagée
- Covers restored and/or laminated/
Couverture restaurée et/ou pelliculée
- Cover title missing/
Le titre de couverture manque
- Coloured maps/
Cartes géographiques en couleur
- Coloured ink (i.e. other than blue or black)/
Encre de couleur (i.e. autre que bleue ou noire)
- Coloured plates and/or illustrations/
Planches et/ou illustrations en couleur
- Bound with other material/
Relié avec d'autres documents
- Tight binding may cause shadows or distortion
along interior margin/
La reliure serrée peut causer de l'ombre ou de la
distortion le long de la marge intérieure
- Blank leaves added during restoration may
appear within the text. Whenever possible, these
have been omitted from filming/
Il se peut que certaines pages blanches ajoutées
lors d'une restauration apparaissent dans le texte,
mais, lorsque cela était possible, ces pages n'ont
pas été filmées.
- Additional comments:/
Commentaires supplémentaires:

- Coloured pages/
Pages de couleur
- Pages damaged/
Pages endommagées
- Pages restored and/or laminated/
Pages restaurées et/ou pelliculées
- Pages discoloured, stained or foxed/
Pages décolorées, tachetées ou piquées
- Pages detached/
Pages détachées
- Showthrough/
Transparence
- Quality of print varies/
Qualité inégale de l'impression
- Includes supplementary material/
Comprend du matériel supplémentaire
- Only edition available/
Seule édition disponible
- Pages wholly or partially obscured by errata
slips, tissues, etc., have been refilmed to
ensure the best possible image/
Les pages totalement ou partiellement
obscurcies par un feuillet d'errata, une pelure,
etc., ont été filmées à nouveau de façon à
obtenir la meilleure image possible.

This item is filmed at the reduction ratio checked below/
Ce document est filmé au taux de réduction indiqué ci-dessous.

10X	12X	14X	16X	18X	20X	22X	24X	26X	28X	30X	32X
										/	

The copy filmed here has been reproduced thanks to the generosity of:

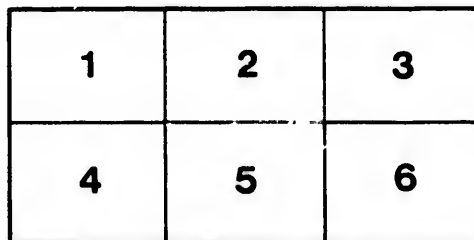
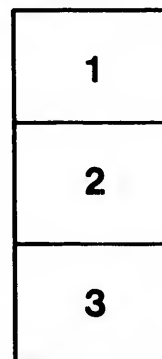
Seminary of Quebec
Library

The images appearing here are the best quality possible considering the condition and legibility of the original copy and in keeping with the filming contract specifications.

Original copies in printed paper covers are filmed beginning with the front cover and ending on the last page with a printed or illustrated impression, or the back cover when appropriate. All other original copies are filmed beginning on the first page with a printed or illustrated impression, and ending on the last page with a printed or illustrated impression.

The last recorded frame on each microfiche shall contain the symbol \rightarrow (meaning "CONTINUED"), or the symbol ∇ (meaning "END"), whichever applies.

Maps, plates, charts, etc., may be filmed at different reduction ratios. Those too large to be entirely included in one exposure are filmed beginning in the upper left hand corner, left to right and top to bottom, as many frames as required. The following diagrams illustrate the method:



L'exemplaire filmé fut reproduit grâce à la générosité de:

Séminaire de Québec
Bibliothèque

Les images suivantes ont été reproduites avec le plus grand soin, compte tenu de la condition et de la netteté de l'exemplaire filmé, et en conformité avec les conditions du contrat de filmage.

Les exemplaires originaux dont la couverture en papier est imprimée sont filmés en commençant par le premier plat et en terminant soit par la dernière page qui comporte une empreinte d'impression ou d'illustration, soit par le second plat, selon le cas. Tous les autres exemplaires originaux sont filmés en commençant par la première page qui comporte une empreinte d'impression ou d'illustration et en terminant par la dernière page qui comporte une telle empreinte.

Un des symboles suivants apparaîtra sur la dernière image de chaque microfiche, selon le cas: le symbole \rightarrow signifie "A SUIVRE", le symbole ∇ signifie "FIN".

Les cartes, planches, tableaux, etc., peuvent être filmés à des taux de réduction différents. Lorsque le document est trop grand pour être reproduit en un seul cliché, il est filmé à partir de l'angle supérieur gauche, de gauche à droite, et de haut en bas, en prenant le nombre d'images nécessaire. Les diagrammes suivants illustrent la méthode.

GENERAL DESCRIPTION

AND

SPECIFICATION OF PLANS

AND

ESTIMATE OF COST

FOR THE PROPOSED

NEW PARLIAMENT & DEPARTMENTAL BUILDINGS

FOR THE

PROVINCE OF ONTARIO

TO BE ERECTED

IN

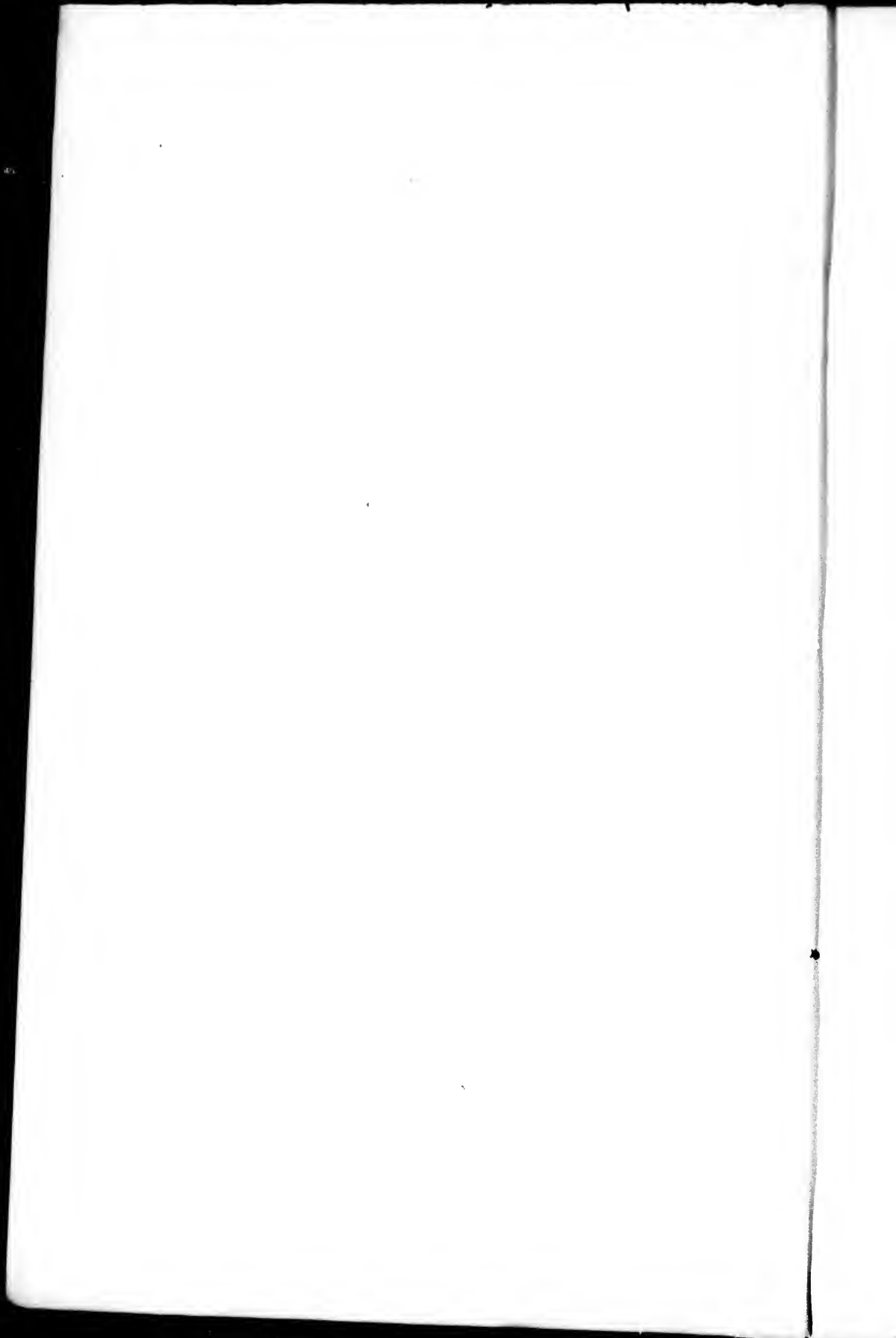
QUEEN'S PARK

IN THE CITY OF TORONTO.

Bibliothèque,
Le Séminaire de Québec,
3, rue de l'Université,
Québec 4, QUE.



GENERAL DESCRIPTION
AND
SPECIFICATION OF PLANS
AND
ESTIMATE OF COST
FOR THE PROPOSED
NEW PARLIAMENT & DEPARTMENTAL BUILDINGS
FOR THE
PROVINCE OF ONTARIO
TO BE ERECTED
IN
QUEEN'S PARK
IN THE CITY OF TORONTO.



DESCRIPTION
OF
GENERAL PLANS.

The construction of the buildings, comprising the Legislative Chamber, Departments and Library, such as described in the present general specification, shall be carried out exactly in accordance with the general plans accompanying the same, and the cost of such buildings will not exceed the sum of \$500,000.00 fixed by the Department of Public Works, as will be seen in the working plans and bill of works to be furnished for the execution of the works, according to the *general instructions* issued by the Commissioner of Public Works, if the present plans and general specification are accepted.

The buildings will have the general form of T. In these plans, they are divided into three principal parts: the lateral wings, formed by blocks F and E, for the Departments; the central part, formed by blocks A, B, C, for the Legislative Chamber; and block D, for the Library. They will cover an area of 48,000 square feet. The front wall, facing south, will be on the line of the Flag Staff and the rear wall will be at a distance of twenty five feet to the south of the first road to the north of the Flag Staff.

The plans of these buildings are as follows:

No. 1.—Plan shewing the general outline and location of the buildings on the site and drainage.

Block A, which forms the front, faces south, is continued to the north by blocks B, C, D, and so forms the main body of the building. The length of these four blocks is three hundred and seventy one (371) feet, including the steps leading to the portico of the main entrance. The front wall of block A is on the line of the Flag Staff. The rear wall of block D is at a distance of twenty five feet to the south of the first cross road to the north of the Flag Staff.

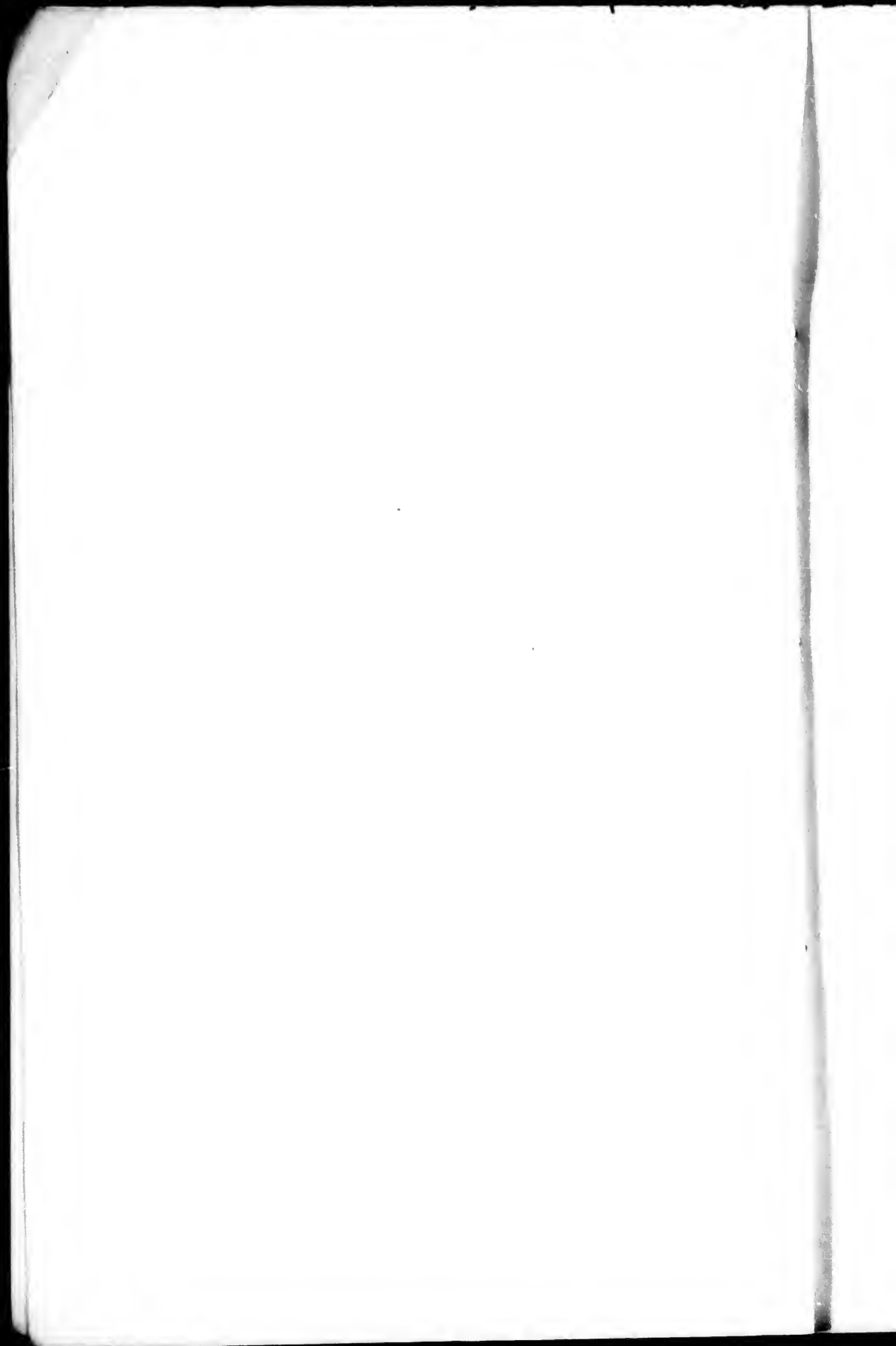
The lateral sides are formed by blocks F on the east and E on the west. The largest breadth of the building, such as represented by the distance between the porticoes of these two blocks, is three hundred and twenty eight (328) feet. They meet at right angle with block A and exceed it at each corner. The length of each of blocks E and F, including towers, is one hundred and seventy three (173) feet and the largest breadth ninety three (93) feet. The distance between the lateral blocks E-F and the interior block B is thirty three (33) feet, giving seventy six (76) feet for the breadth of block B.

The drainage is shown by the *red lines*, which indicate the direction of the main pipe.

No. 2.—Plan shewing the general outline of foundation and partition walls, interior distribution of basement, &c.

In this plan are shown all the foundation and partition walls. In this as in all the other plans, the *blue* indicates *stone* and the *red brick* walls.

The interior distribution of the *basement* is as follows:



Block A.—Centre, occupied by entrance, stairways, elevator and hall; *eastern section*, containing six vaulted rooms: four for Surveys and Patents, and two spare; *western section*, containing six vaulted rooms: three for Queen's Printer's store-rooms and three spare rooms.

Block E.—Centre occupied by entrance with two outside doors, stairways and elevators, balance containing ten vaulted rooms: one for Surveys and Patents, one for Registrar, two for Accountant, one for Clerks, five spare rooms and water closets.

Block F.—Centre occupied by entrance, with two outside doors, stairways and elevators, balance containing ten vaulted rooms: *eastern section*, two printing and one store-room and two spare rooms; *western section*, five rooms: one for clerk of examination papers and four non vaulted for servants or other similar purposes.

Block B.—Centre occupied by passage giving communication between blocks C and A. Northern and southern ends, transversal passages leading to hidden stairs; centre, six vaulted rooms: three for boilers, two for fuel and one for kitchen for members dining-room, besides section between blocks A and B, containing two vaulted rooms for servants.

Block C.—Centre occupied by passage giving communication between B and private entrance for members. *Eastern section*, members smoking-room, 16½ × 58½ feet, with arches that allow of a division in three separate rooms; *western section*, same dimensions, dining-room for members, also divided by arches. Northern end, passage, with two private entrances for members, and stairways leading to Library and ground floor.

Block D.—Alongside the wall, a circular row of fifteen vaulted rooms; in the centre, one circular vaulted room; space between above room and row, large passage communicating with exterior by main entrance, through which vehicles and even cars can be admitted.

No. 3 — Plan of the ground floor.

Block A.—Centre occupied by main entrance with elevators, stairways on each side and large hall in front, communicating with all the other blocks. *Western section*, south of passage, reading room; north, post-office, distributing room and one spare room; *eastern section*, south of passage, three rooms for clerks; north, one room for Queen's Printer and two spare rooms.

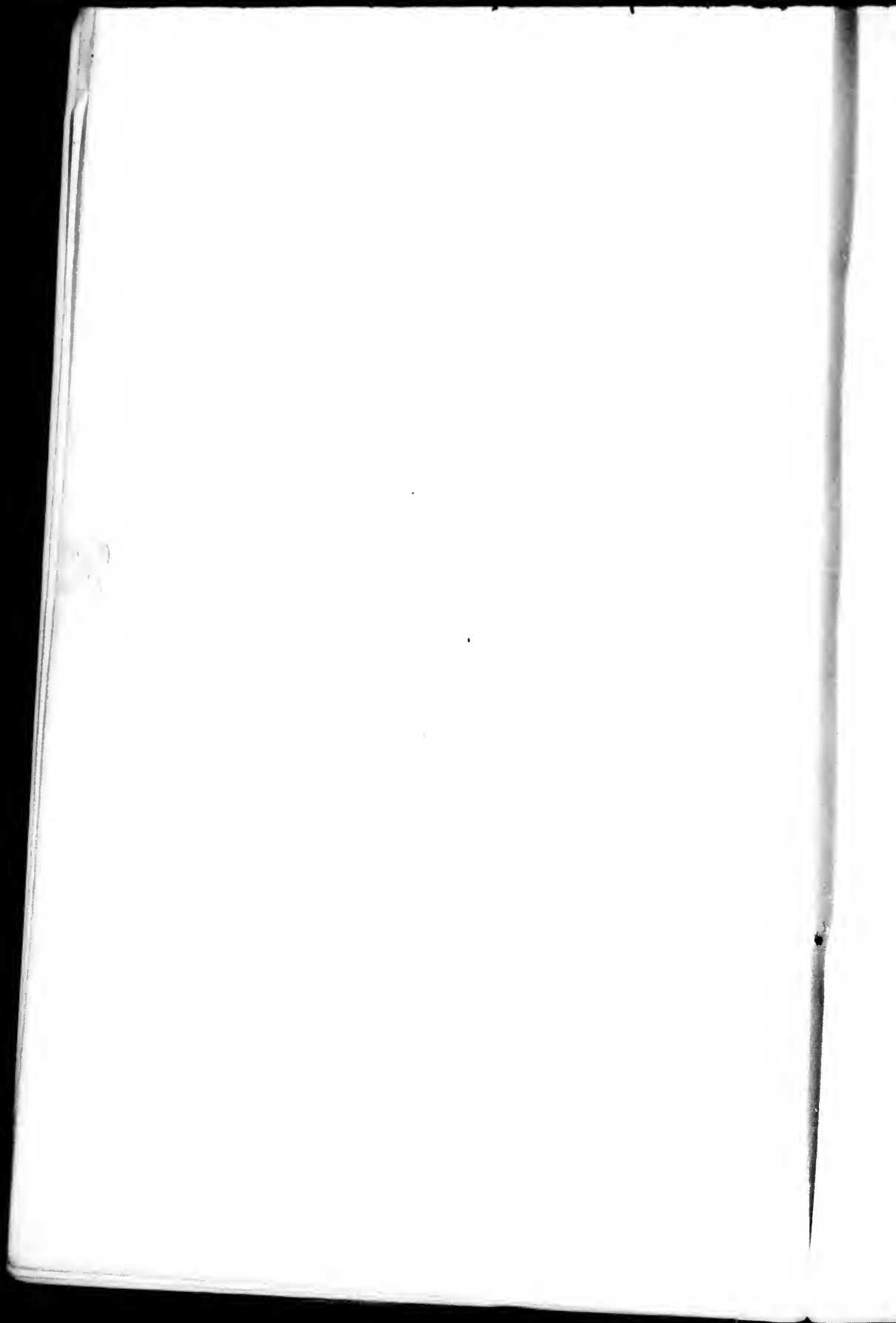
Block E.—Balance of Crown Lands Department. Entrance from portico, hall, and ten rooms containing the following offices: Commissioner's, Assistant-Commissioner; Colonisation Roads, two rooms; Woods and Forests Branch, two rooms; Sales Branch, two rooms; one vault, one waiting room, general water closets, washing and bath rooms with private water closets annexed thereto.

Block F.—Balance of Education Department. Entrance from portico, hall, stairways, elevators and ten rooms containing the following offices: Minister, deputy minister, waiting room, central committee room, clerks, departmental reference library, two rooms for clerks, accountant's office and vault, general water closets, waiting and bath rooms with private water closets annexed thereto.

Block B.—Divided by central passage, communicating with transversal passages leading to hidden stairs in each corner. Eight rooms: six large ones for committees and two smaller ones for committee clerks.

Block C.—Divided by central passage, communicating by transversal passage leading to stairways of private entrance for members. Four rooms: one large reception room for members, two smaller ones and one dressing-room.

Block D.—Library, with stairways leading to the library gallery and room for the librarian.



No. 4.—Plan of the first story.

Block A.—Centre occupied by stairways, elevators and grand hall communicating with the entrance to the Legislative Chamber. *Eastern section*, part of Provincial Secretary's Department: Registrar of Births, &c., two rooms; Law Clerk, one room; Inspector of Division Courts, one room; Immigration, one room, and one spare room. *Western section*, part of the offices of the Legislative Assembly: Routine and Records, three rooms; Clerk of the House, two rooms.

Block E.—Attorney-General's Department. Eleven rooms. Centre occupied by stairways and elevators. Council Chamber and library, one room; Attorney-General, one room; Deputy Attorney-General, one room; waiting room; Clerk rooms, three; one vault and two spare rooms; one dressing-room.

Block F.—Department of the Provincial Secretary. Eleven rooms. Centre occupied by stairways, passage and elevators. Office of the Provincial Secretary, one room; his assistant, one room; one waiting room; balance of Immigration, one room; clerks, two rooms; one vault; Criminal Justice and Licenses, two rooms; Deputy-Provincial Registrar, one room; one dressing-room and one spare room.

Block B. Legislative Chamber, surrounded by a private passage communicating with four hidden stairways in the corners and two spare rooms at the entrance, for messengers or private parlors.

Block C.—Speaker's rooms: reception room, bed-rooms, two; dressing room; dining room; private sitting-room.

Block D.—Galleries of the Library. Roof of the Librarian's room and of the passage leading from block C to the Library.

No. 5.—Plan of the second story.

Block A.—Centre occupied by stairways, elevators and grand hall communicating with the galleries of the Legislative Assembly. *Eastern section*, private bills committee room and two spare rooms; *western section*, railway committee room and two spare rooms.

Block E.—Department of the Provincial Treasurer. Eleven rooms. Centre occupied by passage, stairways and elevators. Treasurer, one room; his assistant, one room and vault; provincial auditor, one room; clerks, two rooms; inspector of insurance, one room; inspector of prisons, one room; secretary of Agriculture, one room, one waiting, one dressing and one spare room.

Block F.—Department of Public Works. Eleven rooms. Centre occupied by passage, stairways and elevators. Commissioner, one room; Secretary, one room; Engineer, one room; Architect, one room; draughtsmen, two rooms; clerk, one room; accountant, one room and vault; one spare room, one waiting and one dressing room.

Block B.—Waiting room for the entrance to the galleries, and galleries of the House of Assembly.

Block C.—Attics, containing six rooms: two for reporters and four spare rooms.

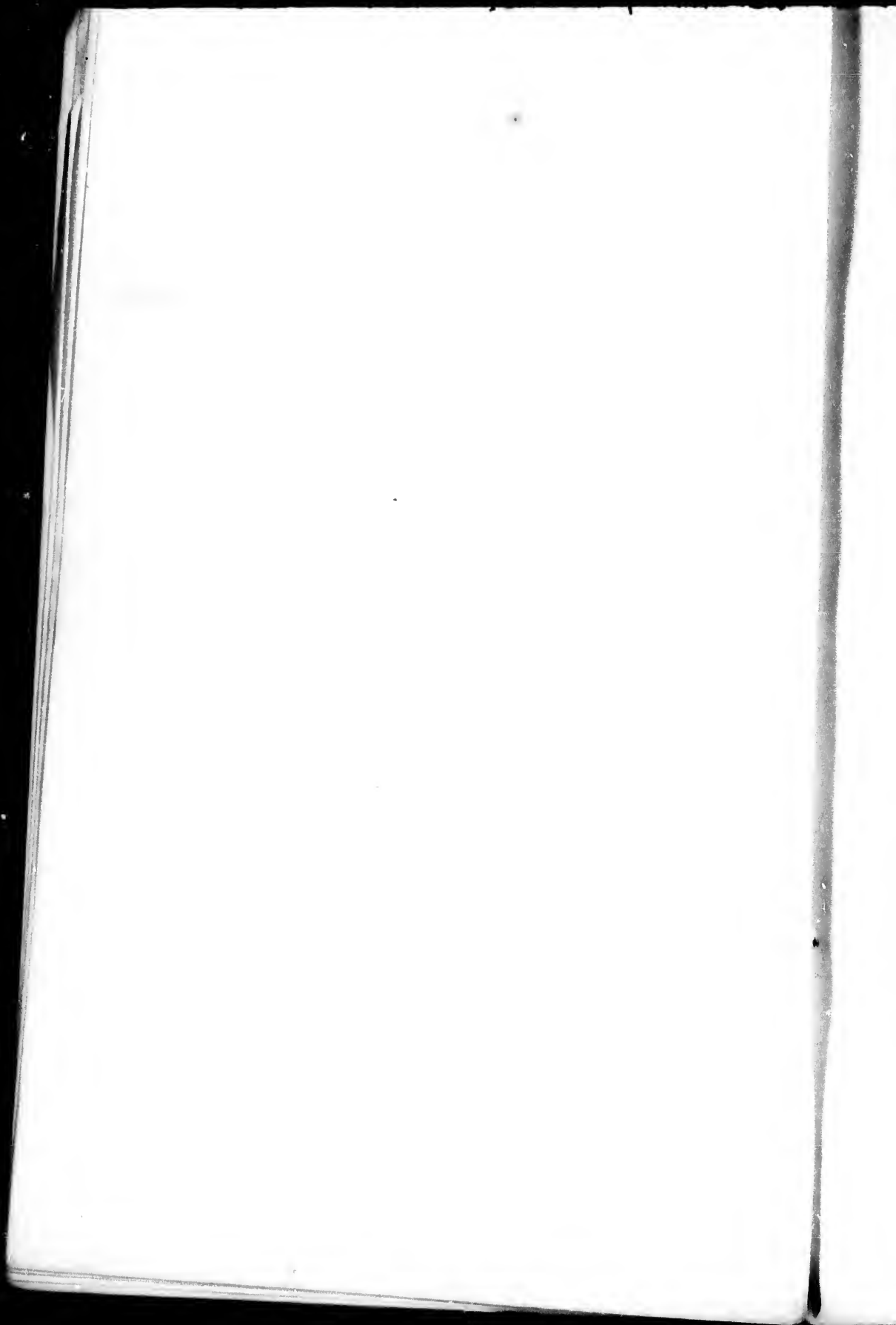
Block D.—Roof of the Library.

No. 6.—Plan of the roof of Blocks A, B, C, E and F.

This plan requires no special explanations and indicates at a glance what it is intended to show.

No. 7 Plan showing the front elevation.

This plan shows the front of the buildings, facing south and the College



Avenue. It includes the ends of blocks E and D, ending by towers which join them to block A.

No. 8.—Plan showing the lateral elevation.

This plan gives a side view of the whole buildings. It shows part of block A, the front and main entrance of block F, part of block B, the whole side of block C and the Library.

No. 9.—Plan showing the rear elevation.

This plan shows the Library, block D, in the centre, the lateral blocks E and F, and part of the central blocks B and A.

No. 10.—Plan showing sectional and lateral elevation.

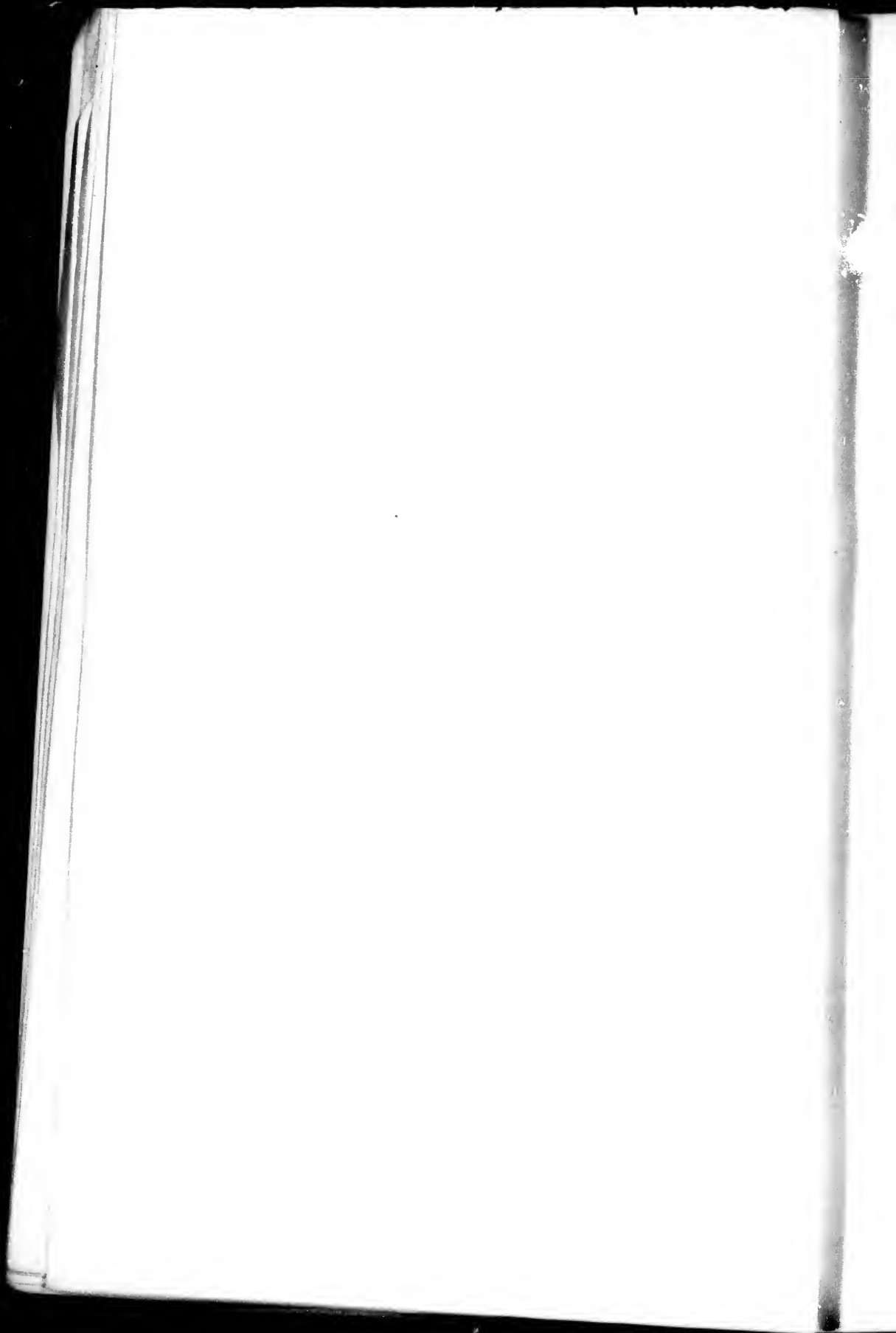
This plan shows the elevation of a section of the centre of block A, the lateral elevation of a side of block B, and sections of centre of blocks C and D.

COMPARATIVE SCHEDULE

This schedule shows in detail what is asked by the *General Instructions* of the Department and what is proposed in the present plans. By comparing the figures in the different columns, one may see at a glance how these plans meet exactly the demand of the Commissioner and in what part, on what floor of the building the offices are located. From left to right, the first figure column shows the space, in square feet, required by the Department and the next column the corresponding space given according to these plans. The last column to the right shows where each office is located.

LEGISLATIVE AND LIBRARY PURPOSES, &c.

	Square ft.	Square ft.		
Legislative Chamber.....	4000	3257	Block B	Plan No. 4.
(Number of members 82; proper provision made for reporter's, speaker's, ladies' and general galleries).....		646 646 650 650	"	" No. 5.
Library.....	3000	2820	Block D	Plan No. 3.
Librarian, one room.....	350	298	" D	" 3.
			" D	" 4.
Speaker's reception-room.....		680		
do private sitting-room.....	1600	256	Block C	Plan No. 4.
do dining-room.....		442		
do bed-rooms (two).....	600	512	"	" "
		115	"	" "
Members' reception-room.....		1650	Block C	Plan No. 3.
do dining-room.....		965	"	" 2.
do smoking-room.....	1000	985	"	" 3.
do wash-room, water-closets, &c.....		247	"	" 3.
Clerk of the House (two rooms).....	700	608	Block A	Plan No. 4.
Seigneur-at arms, one room.....	350	356	" E	" 4.
Routine and records (three rooms).....	900	1045	" A	" 4.
Law clerk, one room.....	350	301	" A	" 4.
Queen's Printer, one room.....	350	301	" A	" 3.
do do store-room.....	800	778	" A	" 2.
Private Bills Committee room.....	1000	815	" A	" 5.
Railway Committee room.....	1000	815	" A	" 5.
Committee rooms (six).....	3000	2612	" B	" 3.
Clerks rooms (two).....	800	817	" A	" 3.
Reading room.....	1000	855	" A	" 3.
Post Office and distributing room.....	600	513	" A	" 3.
Reporters, two rooms.....	800			
Vault.....	100			
Necessary wash-rooms, water-closets, &c.....	2200			
		27000	26161	



ATTORNEY GENERAL'S DEPARTMENT.

Attorney-General, one room.....	450	450	Block E.	Plan No. 4.
Deputy of Attorney general, one room.....	400	486	"	"
Waiting room.....	300	370	"	"
Council chamber and library room.....	500	450	"	"
Clerks, three rooms.....	1000	1225	"	"
Vault.....	500	342	"	"
Water closets, &c.....	150	115	"	"
		<u>3000</u>		<u>3138</u>

PROVINCIAL SECRETARY'S DEPARTMENT.

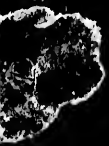
Provincial Secretary, one room.....	450	450	Block F.	Plan No. 4.
Waiting room.....	300	369	"	"
Assistant-Provincial Secretary.....	300	486	"	"
Criminal Justice and Licenses, two rooms (each 350)...	700	799	"	"
Vault, one room.....	250	342	" F.	"
Inspector of Division Courts, one room.....	250	209	" A.	"
Clerks, one room.....	600	604	" F.	"
Deputy Registrar, one room.....	250	450	" F.	"
Clerks, one room.....	400	486	" F.	"
Registration of births, etc. (two rooms).....	650	513	" A.	"
Vault.....	500	437	" F.	" 2.
Immigration (two rooms).....	650	630	" A and F.	"
Water-closets, &c.....	150	115	" F.	"
		<u>5460</u>		<u>5320</u>

PUBLIC WORKS DEPARTMENT.

Commissioner, one room.....	450	450	Block F.	Plan No. 5.
Waiting room, do.....	300	370	"	"
Architect do.....	350	369	"	"
Engineer do.....	350	450	"	"
Secretary do.....	350	429	"	"
Accountant do.....	250	370	"	"
Clerks do.....	450	604	"	"
Draughtsmen, two rooms.....	900	972	"	"
Vault.....	350	342	"	"
Water closet, &c.....	150	115	"	"
		<u>3910</u>		<u>4471</u>

TREASURY DEPARTMENT.

Treasurer, one room.....	450	450	Block E.	Plan No. 5.
Waiting room.....	300	370	"	"
{ Assistant-Treasurer, one room.....	350	370	"	"
{ Clerks, one room.....	600	604	"	"
Vault.....	500	342	"	"
{ Inspector of prisons, one room.....	350	269	"	"
{ Clerks, one room.....	600	486	"	"
Inspector of Insurances, one room.....	350	450	"	"
Auditor, one room.....	350	486	"	"
Secretary of Agriculture, one room.....	350	429	"	"
Water closet, &c.....	150	115	"	"
		<u>1350</u>		<u>4471</u>



CROWN LANDS DEPARTMENT.

Commissioner, one room.....	450	450	Block E	Plan No. 2.
Waiting room.....	300	370	"	"
Assistant-Commissioner.....	350	427	"	"
Woods and Forests Branch, one room vault.....	650	828	"	"
do do do do.....	350	370	"	"
Colonization Roads Branch, one room.....	400	450	"	"
do do do do.....	390	183	"	"
Surveys and Patents Branch, three rooms, vaulted (400 each).....	1200	778	"	" 3.
do do one room vaulted.....	300	294	"	"
do do one room.....	300	356	"	"
Registrar, one room.....	450	464	"	"
Sales Branch, one room.....	600	597	"	" 2.
do do.....	300	356	"	"
Accountant's Branch, one room vaulted.....	500	461	"	" 3.
do do do.....	400	342	"	"
Clerks, one room.....	100	437	"	"
Three vaults (each 500).....	1500	1541	"	"
Water closets, etc.....	200	315	"	" 2.
	<hr/>	<hr/>		
	8950	9349		

EDUCATION DEPARTMENT.

Minister of education, one room.....	450	450	Block F.	Plan No. 3
Waiting room.....	300	370	"	"
Deputy, one room.....	350	429	"	"
Accountant, one room.....	300	370	"	"
Vault.....	200	342	"	"
Departmental Reference Library.....	700	597	"	"
Clerk's rooms.....	1200	1282	"	"
Central Committee Room.....	500	486	"	"
Waiting room.....	200	370	"	"
Printing room.....	800	901	"	" 2.
Store room.....	300	342	"	"
Clerk (Examination Papers), one room.....	350	461	"	" 3.
Water closet, &c.....	150	147		
	<hr/>	<hr/>		
	5800	6570		

SUMMARY.

Legislative and Library purposes, say.....	27000	26161
Attorney-general.....	3000	3138
Provincial Secretary.....	5500	5920
Public Works Department.....	1000	1471
Treasurer's Department.....	4100	4471
Crown Lands Department.....	9000	9349
Education Department.....	5800	6550
	<hr/>	<hr/>
	59000	60650

BASEMENT.

Ample provision is made in basement for kitchen, store-rooms, servant's rooms, boiler and fuel rooms, &c., and also for such other accommodation and rooms as may be required in connection with heating, ventilating, elevators, hoists, besides sixteen spare vaulted rooms under the Library, which could be used as extra vaults for the Departments or any other purposes. It may be observed that all the rooms not bearing a special designation are spare rooms, at the disposition of the Department for future use. Moreover the third story of blocks A, E, F, having an area of 7008 square feet, is also disposable for offices, messengers or other similar purposes, in case of need.



GENERAL SPECIFICATION

For the building of a Legislative Chamber, Library and Departmental edifices for the Province of Ontario, said buildings to be erected in Queen's Park, in the City of Toronto, according to Plans, Elevations, Sections and detailed drawings and the following general specification.

EXCAVATIONS.

The whole surface to be covered by the buildings, the trenches of the walls, drains, water-pipes, &c., will be excavated to the depths shown on the section, and in all cases, for foundation walls, at least to the solid rock.

Before commencing the walls, the rock shall be levelled, and when necessary the hollows of the rock shall be filled with concrete.

The excavations are calculated for a depth of eight feet from the level of the ground. There will be left a space of twelve inches clear of all external faces of foundation walls, allowing room enough to draw the joints.

The excavations for all drains, water-pipes and other purposes outside of the buildings shall have the depth and width shown on the plans.

The earth from excavations not required for enclosing foundation walls shall be removed from off the premises and deposited where directed by the Architect.

The trenches for drains and clear space left alongside the walls shall be filled with earth or rubbish. All parts of the Basement to be paved with stone shall be filled to ten inches underneath the stone, and six inches deep of concrete will be laid over the earth. The cellars shall be dug or filled, as the case may require, such as shown on the detailed sections and plans to be furnished.

DRAINS.

The drains for the whole building, as shown on Plan No. 1, shall be made in earthen pipes 18 inches diameter, for the main pipes, and 6 inches for the branch pipes. The pipes will be laid and jointed with hydraulic cement mortar. The main drain pipe, passing under the portico of the main entrance, shall be laid in a brick vault of a size admitting of easy repairs, in case of need, without excavating. The trenches for drain pipes shall be filled with earth to a depth of at least three feet, and the rest with rubbish. Six inches pipes shall be laid from each gutter to the nearest drain pipe.

MASONRY.

All foundation walls, to the ground line for exterior walls, to the level of the pavement of Basement, for all partition walls, shall be made in good rubble masonry, with stone from Milbro, Kingsbr, Guelph or Caledon, subject to the approval of the Commissioner or his representative, thoroughly bonded in every part and well laid in mortar. As high as the floor line of Basement, foundation and partition walls shall be six inches thicker than partition or exterior walls above this line, such as these are shown on Plan No. 2. The top of rubble masonry shall be perfectly levelled, wherever required, with large blocks on which will be laid cut-stone or brick masonry, &c. The partition walls of each block, of each floor and attics shall be made in the same manner. The backings of the external walls above the ground shall be in good stone masonry, the cut stone forming the exterior facing being thoroughly bonded with the brick masonry of the interior facing.



The joints of the rubble masonry shall be drawn as the masonry progresses. The first layers of foundation walls shall be made of large blocks thoroughly bonded and the hollows filled with concrete. As much as practicable, the work on all the walls shall progress with uniformity, so that the difference in the height of the different parts of the masonry shall not exceed four feet.

The mortar to be used shall be composed of two parts of clean river sand and one part of good lime. The hydraulic cement mortar shall be composed of one part of cement and two parts of sand. The stones used in the masonry shall be laid in their natural beds. The builder shall lay the wooden beams, bands, blocks, &c., required and mentioned in the specifications or in the plans.

Stone arches, two feet thick, shall be made over the openings in the walls required for the passage of drains.

Rubble masonry shall be built of good, sound, large, flat bedded stones laid in horizontal beds. It may be known as random work or broken coursed rubble. All stones shall be laid on their natural beds.

Headers shall be built in the wall from front and back alternately at least one in every five feet in line of wall and frequently in the rise of wall.

BRICKLAYER.

All partition walls, arches and vaults shown on the plans by a reddish tint, shall be built of good and well burnt red Canadian brick, laid in English bond and thoroughly grouted. There shall be a bed of headers in every five beds of masonry.

The inside facing of external walls shall be made of brick, of the same quality as mentioned above, laid in the same manner, in beds having the same height as those of the stone masonry forming the exterior facing. The thickness of the brick beds will alternate from 8 to 12 inches, so that they may be thoroughly bonded with the stone masonry.

Arches, formed by three courses of brick trimmers, shall be made over all openings for doors and windows.

The smoke ducts in chimneys shall be made of earthen pipes 9 inches diameter, and 15 inches for furnace chimneys.

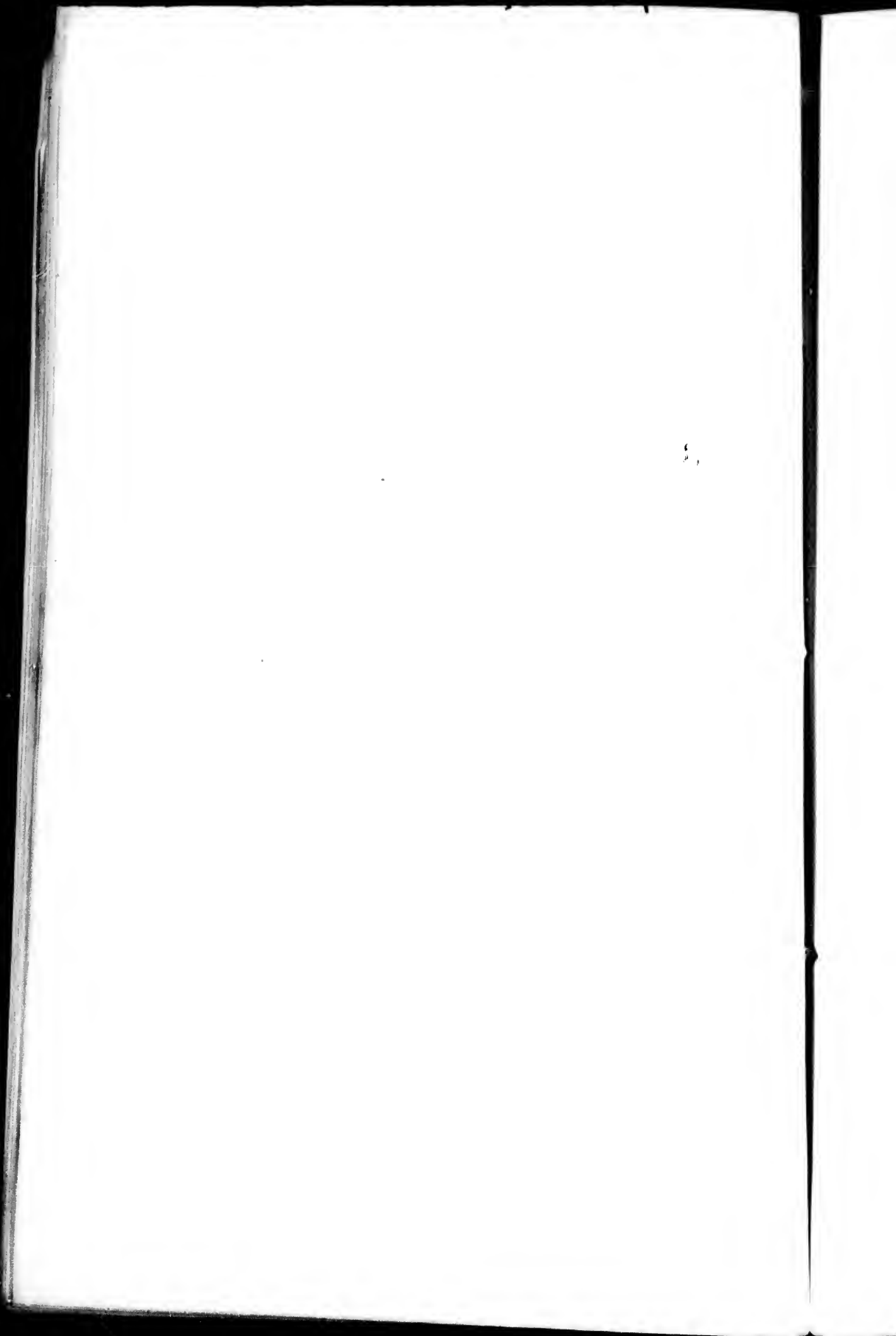
The mortar for brick masonry shall be sifted and composed of one part of good lime and two parts of sifted sand.

The brick shall be thoroughly soaked in water before being used.

All the basement of blocks A, B, C, D, E and F shall be vaulted by three beds of bricks. Each room separately shall be fire proof. The top of these vaults shall be levelled with concrete, in order to make a layer for the ground floor.

The concrete to be used for this building shall be composed of one part of hydraulic cement and three parts of fine clean sand and gravel, or stone broken to pass through a 2 inches ring. All the floors of the corridors on the ground flat, first and second stories, shall be levelled with this concrete. The space between the beams shall be filled with this concrete, which will over-lay the beams by two inches, so as to make them fire proof.

The same shall be done for every flat and series of beams. (See specification of floors and beams.)



CUT-STONE.

The floors of entrance halls, vaults and passages of Basement, with the exception of rooms intended to be used as offices, in blocks E and F, or for lodging the watchmen, shall be made of stone blocks, rough houghed, 2 x 2 feet and 4 inches thick, laid in hydraulic cement mortar on layers of concrete.

BASEMENT.

The exterior facing of Basement, from ground line to the level of the floor of ground flat shall be built of limestone, such as may be found in the Province of Ontario.

The appearance will be such as shown on plans. The stone shall be fine houghed. The beds and joints of the stone shall be cut. The width of the stone shall be 20 inches and that of headers 28 inches. The courses shall be 20 inches high, except the two upper ones, one of which shall be chamfered and the other in moulding. The chamfered stones and mouldings of window jambs shall be cut such as shown on the general plans, in accordance with detailed plan for each sort of window.

Fines shall be bored through the stone for ventilation pipes and a place cut out to admit the iron grates.

All exterior facings of Basement, for each of the blocks, shall be made as above described.

STEPS.

Steps for blocks E and F and the main entrance in the front shall be made such as shown in the general plans and in accordance with detailed plans on a larger scale. The front of the steps shall be fine tooled and the top rough houghed. When not exceeding ten feet in length, each step shall be made of one block, and of two, if longer. The joints and beds of the steps shall be cut and each step shall go three inches under the one above it. The pillars at the foot of the steps and the four pillars at the ends of the walls protecting the balustrade of the portico at the main entrance shall be built of fine houghed stone, as also the balustrade. The copings shall be chamfered and fine houghed.

PORTICOES.

The porticoes of main front and blocks E and F, shall be built of cut-stone according to front elevation plans and in conformity to detailed plans.

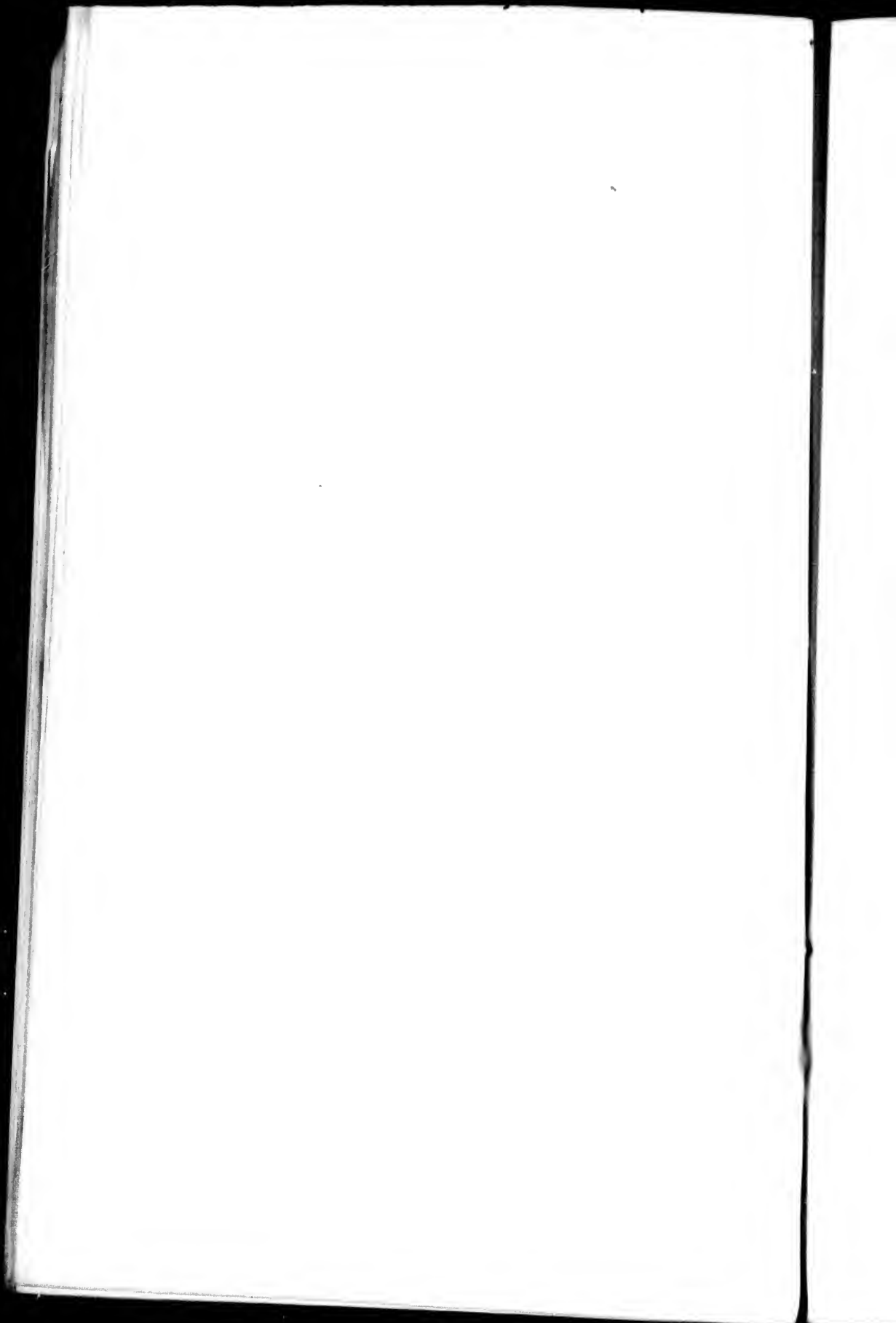
The detailed plans will show the distribution of stones for pilasters, columns, cornices, vaults, &c., of the three porticoes.

PLINTH.

The plinths between ground floor and first story, and between first and second story, shall be made of fine tooled cut-stone. The first and last course shall be moulded. Window sills shall lay on these plinths.

CORNICES.

The cornices of block A and the pavilions of this block shall be built of cut-stone, with brackets and mouldings according to plans of detail. Cornices of blocks B, C, E and F shall be built in the same manner. The cornice of block B, crowning the masonry of centre of Legislative Chamber, shall be made of cut-stone. The cornice of attics of the towers of blocks B, E, F shall be made of fine tooled stone.



All the windows shall be worked according to plans of detail, in fine hatched and carved stone, and according to the size of each block, such as directed in plans of detail.

The crowning of attics and towers above cornices and to the eaves shall be made of cut stone, with the exception of pediments and cornice of the little columns. The crowning of the centre for the front of block A, composed of pediments and little columns, shall be made of stone, except for the rear face and sides which shall be made of wood and galvanized iron. The putting out of the centre of blocks A, E, F shall be made of fine hatched cut-stone, for such parts as are indicated on plans.

These three putting centers shall rise above the body of the building and shall be crowned by carved cornices and trophies, those of the main centre representing the arms of the Queen, and those of blocks E and F the arms of the Province of Ontario, the whole according to plans of detail.

All the quoins of centers, pavilions and puttings above basement shall be made of measurement and fine hatched stone, each block forming a header.

At the angles formed by the puttings of the centre of block A, the towers, such as shown on elevation plan, shall be made of cut-stone as high as the base of the pyramid forming their tops.

The chimney stacks shall be made in the form shown on plans, of fine hatched stone, with mouldings, columns, &c., and the top shall be formed of one block of stone.

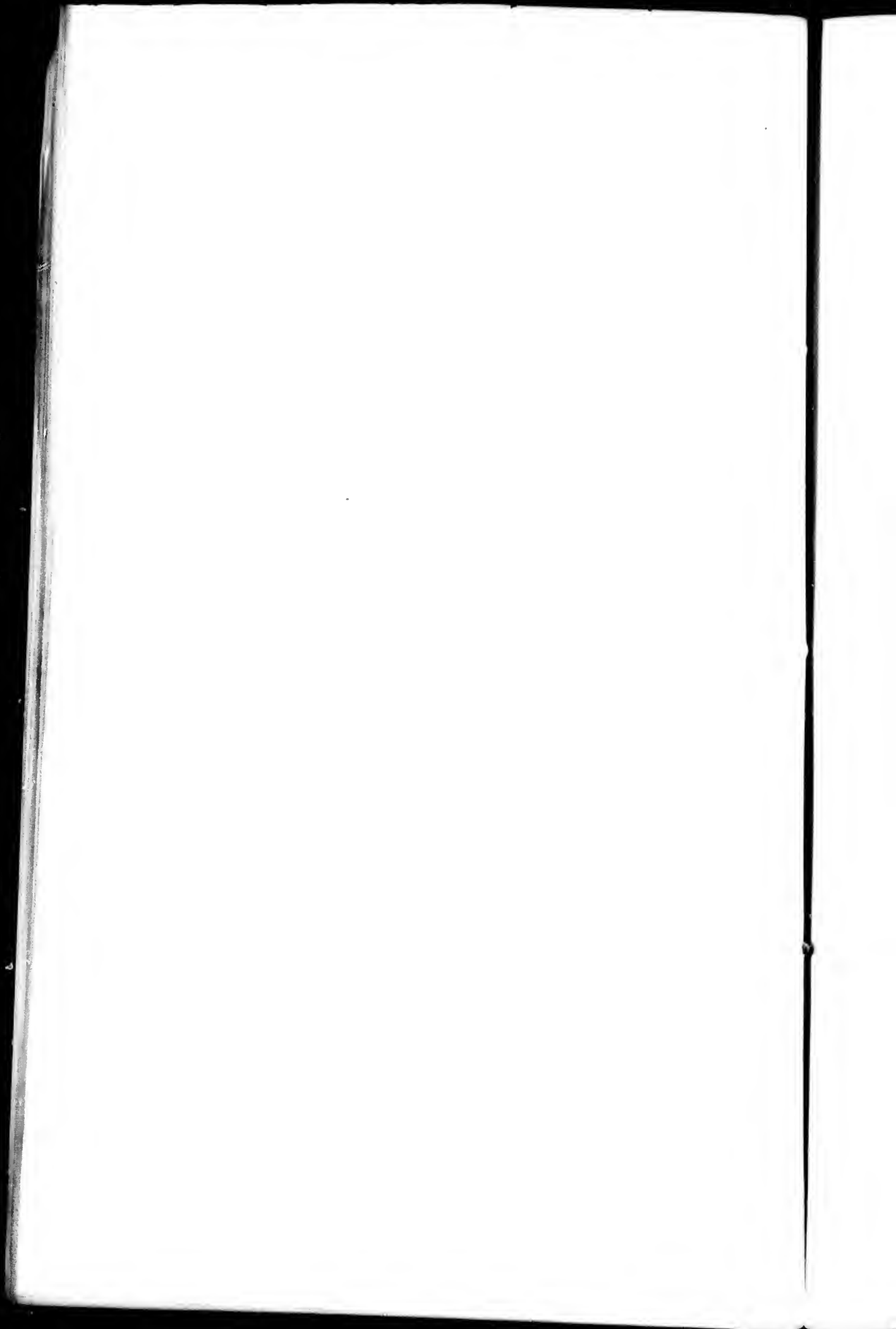
The counter-forts of the Library, above basement, shall be made of stone for the quoins, mouldings, cornices, pediments and crownings, all carved, the whole such as shown on the general plans and to be executed according to plan of detail.

The body of the external walls of all the building, including the library, excepting all cut stone works mentioned above and shown on the plans, shall be built in rubble masonry with embossment at the joints and pointed beds. The stone shall be laid in beds of from 7 to 10 inches thick, so that the thickness of two beds will correspond to that of one bed of angular cut-stone. The stone shall be laid in beds of from 8 to 10 inches, with the exception of headers which shall have 16 inches. This stone shall be of the same quality as cut-stone.

FLUES.

All the stone for stove or furnace flues shall be laid in the walls under the direction of the architect. The steps and interior landings in the doorways of the main entrance and of the two private entrances to the Library, through block C, shall be made of cut stone, rough hatched on treads and tooled on risers. Each step shall be made out of one block, when not exceeding 8 inches and of two when over 8 inches. The joints and beds of these steps shall be cut and each step shall go at least 3 inches under the one above it. The landings of doorways shall be made, as far as practicable, of one block, fine hatched. The steps shall be tooled on the risers and fine hatched on the treads. The top shall be cut according to the slope of the steps.

The stairs in blocks A, C, E and F, from basement to third story, of centers A, C and F, and those of block C, from basement to ground floor, shall be made of stone, rough hatched on steps and fine tooled on risers. Each step shall be made of one block bonded in the partition walls. The joints and beds of these steps shall be cut and each step shall go 3 inches under the one above it. The bottom surface shall be cut so as to follow the course of the staircase.



Pillars of centre of block A in basement, supporting vaults and staircases, shall be made of rough houghed cut stone. The columns, numbering 84, and staircases and doorways of ground floor, first and second story, shall be built in stone, with carved bases and capitals, the whole according to plans of detail, showing in all particulars the works to be executed.

The pilars and pilasters supporting the walls above the galleries of the Legislative Chambers shall be made of fine toolled stone, with carved bases and capitals. The arches between the pillars shall be built of cut-stone, with fine toolled mouldings, the whole according to plan of detail showing the dimensions and form of each stone.

The cut-stone shall be laid in fine mortar and the joints filled with mortar of a color approaching as nearly as possible that of the stone used. Coarse stone shall have full beds and joints on the whole width of its bed.

The contractor shall make all required work and cuttings for gutters, galvanized iron and valleys to the several roofs and when ever required for similar purposes.

CARVING.

The whole of the stone carving shall be executed as shown on the several drawings by such carvers as will be selected or approved by the architect.

QUALITY OF STONE.

All the cut stone used shall be of first quality, of a uniform color, taken from quarries approved of by the Commissioner or his representative, and properly washed and cleaned down at the completion of the work. The blocks shall always and invariably be laid on their quarry beds.

PLASTERER.

All the walls of rooms, corridors and vaults, all the walls of the Library, of basement, ground floor, first and second story, also the attics of block C, the interior of the Legislative Chamber and its corridors and staircases shall be plastered three coats with sifted mortar.

All the ceilings of room and corridors of the above mentioned flats shall be lathed and plastered three coats with sifted mortar.

Lath for the ceilings shall be of the best quality of sawn pine, dry, breaking joint every 18 inches.

Sand shall be clean, from approved pit and washed.

Hair shall be of first quality and free from dirt.

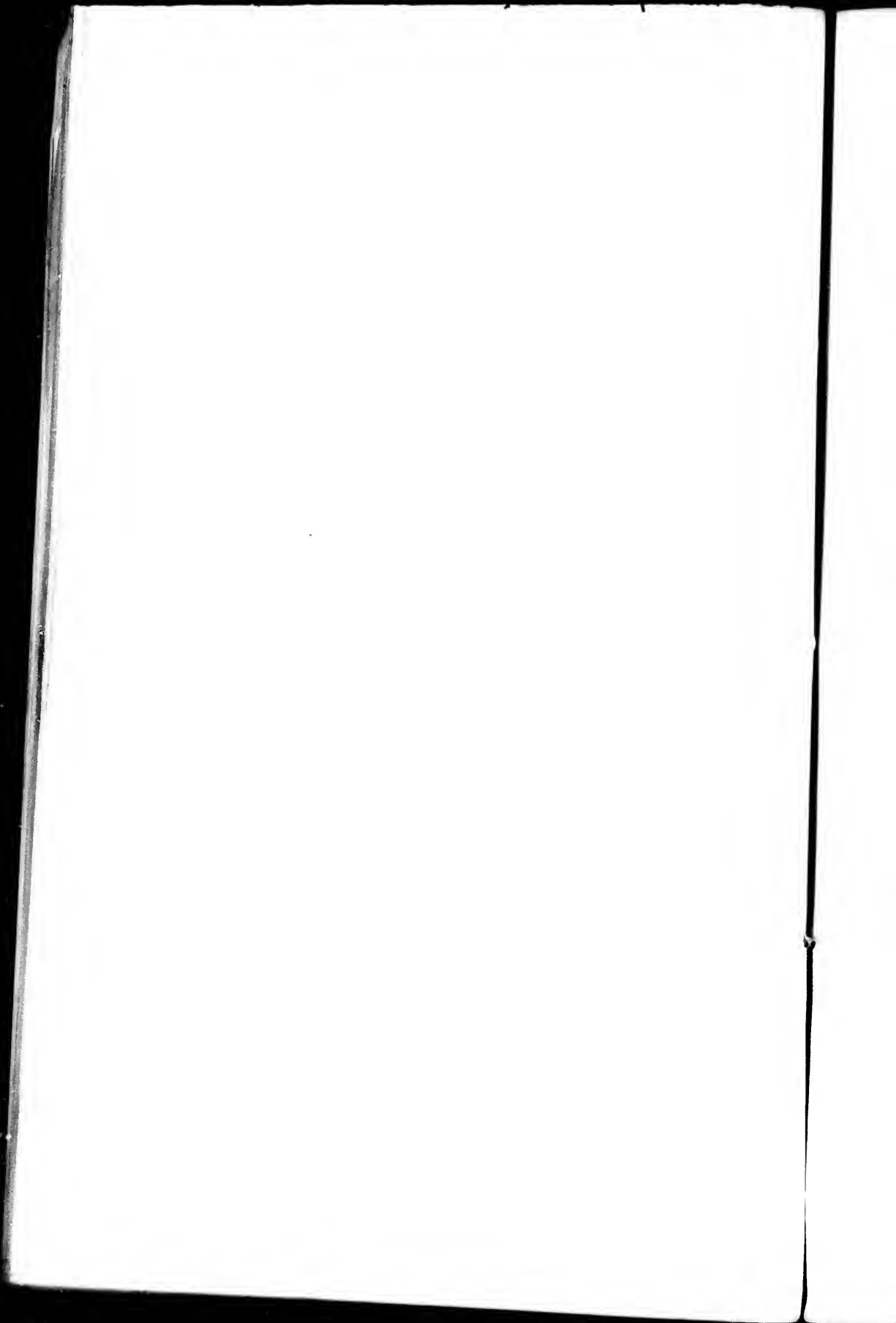
Lime shall be fresh burnt and kept under cover until required for use.

Mortar for plastering shall be composed of one part of lime and two parts of sand. The first coat on lath shall be mixed with a sufficient quantity of hair, thoroughly well incorporated together with pure clear water.

The two first coats shall be of brown mortar, and the third of a compound of one part of plaster and two parts of lime.

Plaster cornices shall be made in all corridors, passages and staircases of the three principal flats, in the speaker's rooms, in the rooms of the Legislative Chamber and in the Library. These cornices shall be made in the form and of the dimensions shown in the plans of detail.

The ceilings of the large entrance halls, of the ground floor, of the first and second stories of block A, shall have recesses ornamented with mouldings and cornices and arches extending from one column to another.



All these works shall be executed according to plans of detail describing with precision the works to be executed.

CARPENTER AND JOINER.

TIMBER.

All timber, unless otherwise specified, shall be of the best quality of sound pine, free from large, dead or loose knots, cracks or other defects whatsoever. Hardwood timber shall be the same as to quality. All shall be sawn on the four sides and die square.

The timber for carpenter's work must be at least two seasons old. All timber for joiner's work must be the very best picked stuff and kiln dried.

The beams, rafters, collars, salls, tie beams, landing pieces, and other roof timbers shall be placed and joined such as shown in detailed plans.

The space between principal rafters shall not exceed 4 feet.

Ridge saddles shall be fixed in rear of chimneys, dormers, pediments and acrotairs.

There shall be fixed all required frames and trimmers for stairs, dormers, chimneys, &c.

ROOFS.

Sloping and flat portions of roofs shall be covered with $1\frac{1}{2}$ inch flooring board, ploughed and tongued, laid in rows.

The curved parts shall be covered with narrow board $1\frac{1}{2}$ inch thick, square joints. The contractor shall make all the wooden work required for cornices, tops, mouldings and other ornaments to be covered with galvanised iron or zinc, such as shown on general plans or on plans of detail which will be furnished during the execution of work.

The beams shall be $2\frac{1}{2}$ inches thick and 12 inches high, solidly fixed in masonry, two feet distant the one from the other.

One inch under flooring shall be laid between trimmers in order to serve as layer for concrete, which shall be laid so as to make the trimmers fire-proof.

All centres for arched openings throughout, vaults, &c., shall be provided by the contractor who shall remove them only when directed by the Architect.

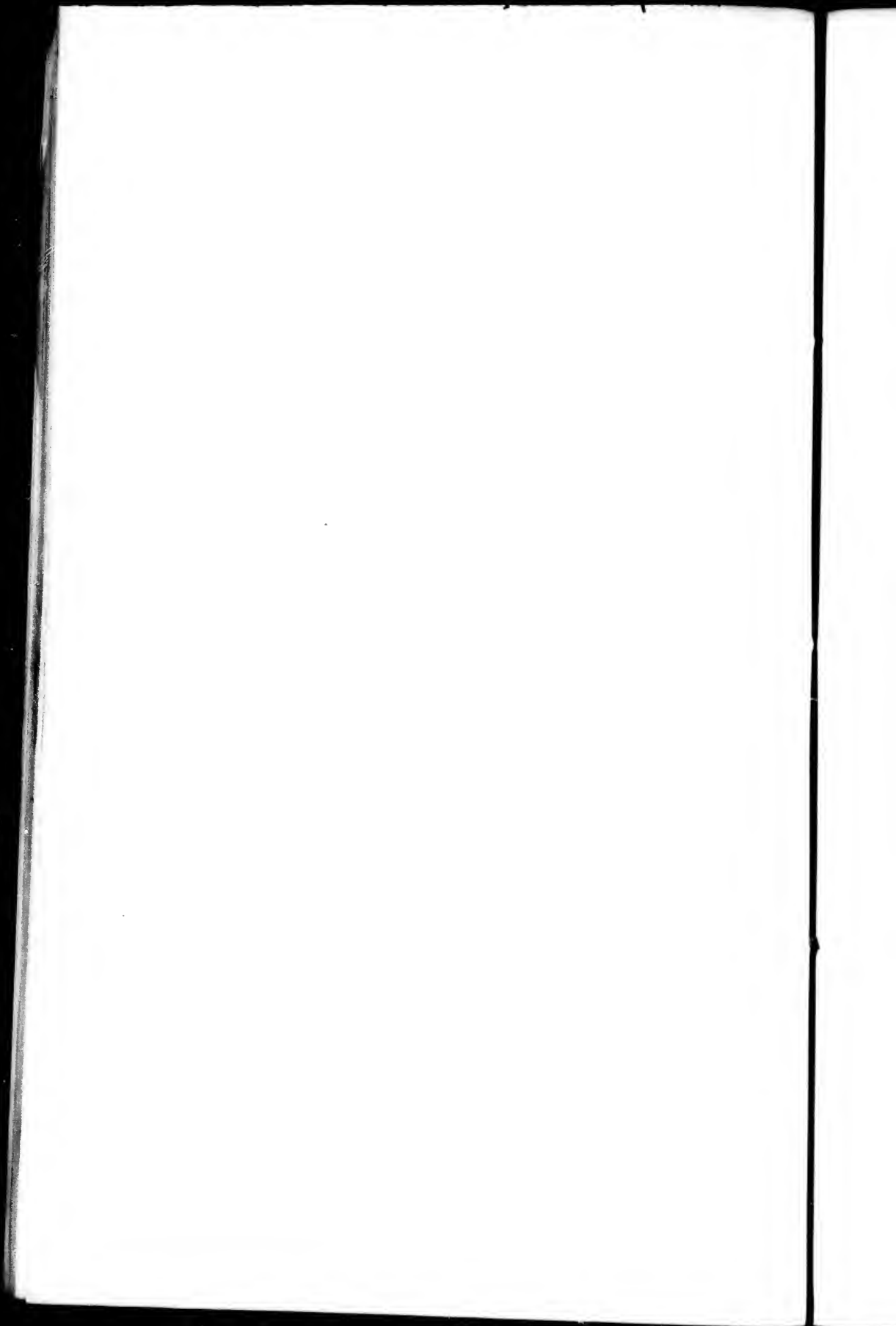
Centres for the vault of the library shall be formed with three $1\frac{1}{2}$ inch trimmers bolted together, perfectly solid and joined to the frame of the roof.

The eading of the three stories shall be provided with lintels $1\frac{1}{2} \times 1\frac{1}{2}$ inch, at 12 inches centres.

The floors, with the exception of those of Basement, corridors, Legislative Chamber and Galleries, shall be laid with $2\frac{1}{2} \times 2$ inches oak flooring, square joint, well side nailed on pine joists bedded in concrete.

The floors of the Legislative Chamber and private corridors for members and galleries shall be laid with 3×2 inches pine flooring, laid and nailed in the same way as oak flooring.

The doors to entrances of the three porticoes of blocs A, E and F shall be made of oak $2\frac{1}{2}$ inches thick, with curved panels and mouldings; hung with 5 inches hinges, to oak frames 4×5 inches, provided with locks, buttons and bolts, value per door \$20.00, the whole according to plans of detail.



The two doors to entrances of block C, leading to the Library, shall be made of oak, with moulded panels, such as shown on general plans and according to plans of detail. The iron fixtures for each door shall be of a value of \$10.00.

The two outer doors of basement of blocks E and F shall be made of 2½ inches stuff, with moulded panels and iron fixtures of a value of \$4.00.

The three doors to halls of blocks A, E, F shall be made of 3 inches pine, with moulded panels, frames, fixtures, etc., all to detail. The value of these doors, with iron fixtures, shall not exceed \$30.00 each.

The outer door of the Library, at the north entrance, shall be double hung, made of 3 inches stuff, with moulded panels.

The doors of basement rooms, numbering 19, shall be made of 2 inches stuff with moulded panels. They shall be hung with 4 inches hinges to frames, provided with fixtures, locks, such as shown on detailed plans.

On ground floor all doors for offices, numbering 36, shall be provided with moulded panels, made of 1½ inch stuff, hung with 4 inches hinges, provided with locks of a value of \$2.00 each, all to detail.

All doors to offices on first and second stories shall be made in the same manner as those of ground floor. There shall be 50 of them on first and 46 on second story, the whole such as shown on detailed plans.

Doors to the entrance of Library, Legislative Chamber and galleries shall be made according to detailed plans.

WINDOWS.

Plan windows to all the buildings, including dormers, shall be made according to detailed plans and in the form shown by general plans.

All windows, including those of dormers, shall be provided with 1½ inch winter sashes corresponding to inside sashes. According to their dimensions and form, those winter sashes shall consist of two or more parts and shall be hung with hooks, in the rooms for offices, and those of the Library and of the large windows of the Legislative Chambers shall be fixed permanently.

Window openings shall be provided with 2 inches sills, and 1½ inch beads; the jamb linings and soffits shall be in mortar.

Dormers shall be made of the form shown on plans, with moulded frames, for casement and winter sashes, frames, cornices and all wooden work required for ornaments and roof.

Plinths shall be laid at the base of all walls, in rooms and corridors.

1½ inch beads shall be laid at the angles of all plastered walls.

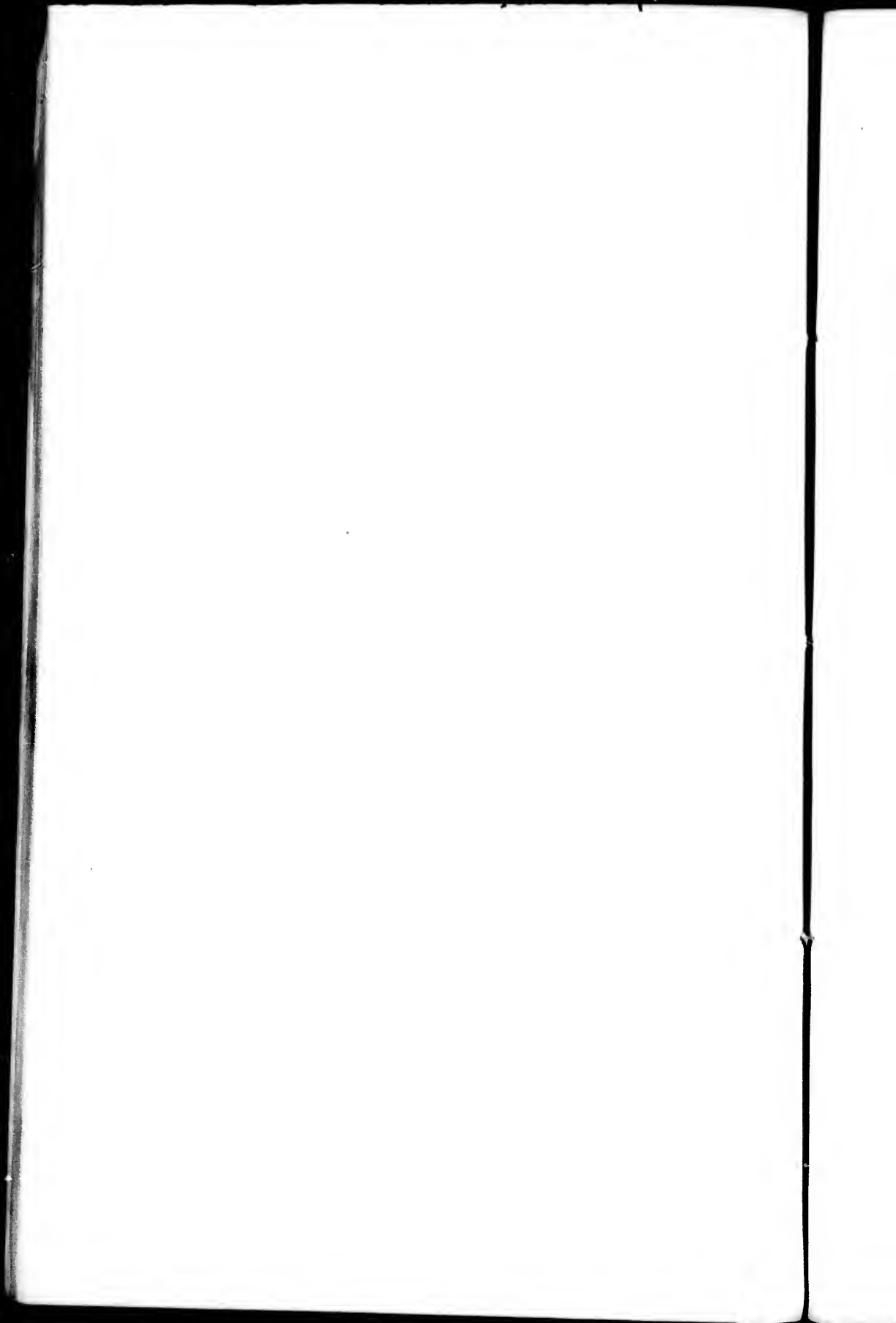
Handrails shall be built of moulded hardwood, according to detailed plans supplied by the architect.

The contractor shall build five pine ladders leading from to the roof.

Trap-doors shall be made in ceilings and flat portions of roof.

Partitions of water closets shall be made of narrow boards 2 inches thick, ploughed and tongued, with moulded capping.

Water-closets shall be provided with double seats and all wooden work required for laying basin, pull and pipes. General water-closets in the Departments shall be built of cherry and private water-closets for Speaker, members and ministers, of black walnut.



Wooden work in dressing-rooms, bath rooms for the Speaker, &c., shall also be made in black walnut, with panels, screwed, the whole according to plans of detail supplied by the Architect.

All pipes shall be cased in chases with 1 inch casing screwed to walls.

The contractor shall execute all carpenter's and joiner's work required for introducing and laying water, gas and heating pipes and other plumber's work.

Tanks for water-closets shall be made of 2 inches board and well joined.

The steps of the four iron stairs in the towers of the Legislative Chamber shall be made of oak.

Water tanks, built in the same manner as those of water-closets, but larger, shall be built in each of blocks A, B, C, E and F.

Moulded cornices of the flat portions of the roof shall be made of galvanized iron, as also small domes, that of the Library those of blocks A, E, F and cornices, mouldings, bases, capitals, moulded pediments and facings, all to detail.

CAST AND WROUGHT IRON WORK.

The iron crestsings shown by drawings of top of roofs of centre of blocks A, E, D and C shall be made of cast iron, according to drawings supplied by the Architect and approved models, and fixed in the above mentioned manner.

Double and fire-proof iron doors, of a value of \$100.00 each, shall be made for all vaults having no windows, viz : four for each of blocks E and F.

There shall be one double iron door, of a value of \$50.00, for each of the furnace room and one for the kitchen.

There shall be a fire-proof iron door, of a value of \$150.00, at each end of the corridor of block C.

Iron stairs for the four towers of block C and two for the galleries of the Library, shall be built according to plans of detail.

Beams for the galleries of the Library to be iron beams.

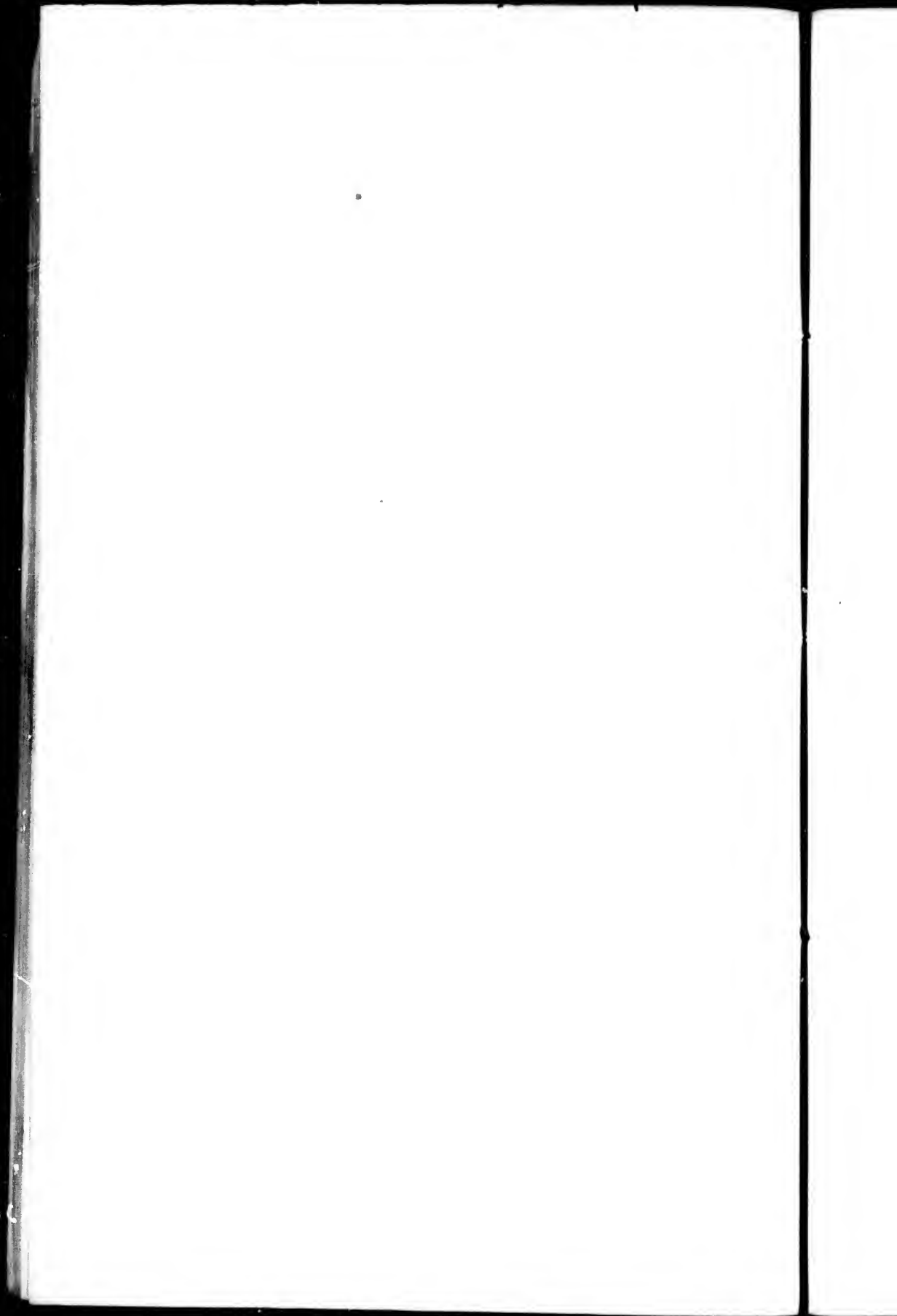
ROOFING.

Cover the deck roofs, tops of dormers, saddles to chimney stacks, etc. with galvanized iron strongly rivetted and soldered at all joints in their length, and to be in large sheets; the joints to deck roof to be laid on rolls (provided and laid by the carpenter as required by the roofer. All the above to be laid on the best quality of felt.

All the galvanized iron to be Morewood's best No. 26 gauge of brand. The whole of the galvanized iron work to be left perfectly water tight and secure, and be guaranteed snow tight and free from leakage for three years from date of completion, and any defects that may arise during that period will have to be made good by the contractor.

SLATING.

Cover the sloping portions of the roofs with the best quality of Melborne or Rockland slate, 18 x 10 of uniform color, part of the slating so shown to be cut to shape such as shown in the elevation plans, all to be laid on felt, each slate to be securely nailed with two 1½ roughed galvanized iron nails, slates to be carefully cut to all valleys, hips, etc.; slating to be laid in the best manner and guaranteed as noted for galvanized iron work. Provide and fix the iron railings to the deck roofs, properly secured and fixed according to drawing; the feet of standards will be bolted to wood work of roof and have a cover of galvanized iron



soldered to galvanized iron of deck roof, and cap flashing to same round standards as will be directed.

PLUMBER AND GAS FITTER.

The contractor shall provide all necessary labour, lead, piping, iron and lead, solder, wall hooks, bends, T pieces, unions, stopped ends, crosses, drop screws, elbows, etc., and other requisite articles of plumber's and gas fitter's work necessary and usual in buildings of this description. All materials to be the best quality and all workmanship to be first class. He shall execute all plumber's work required for hot and cold water apparatus, baths, water closets, lavatories, sinks in the kitchen, and gas fittings in each office room, in the Library, corridors and halls, Legislative Chamber, &c., such as required in each block and in each Department. All and each of the above works shall be executed according to detailed drawings and specification.

All pipes for water shall be of drawn lead and weigh as follows: $\frac{3}{4}$ inch diameter, 7 lbs.; $\frac{1}{2}$ inch, 8 lbs.; 1 inch diameter, 10 lbs.; 1 $\frac{1}{2}$ inch, 12 lbs.; 2 inches diameter, 16 lbs. per lineal yard.

Two inches water pipes with float balls, shall convey the water from the main water pipe in the streets to the three tanks in the attics of blocks E, F and G.

A 8 lead overflow pipe 2 inches diameter, shall convey the water from each tank to water-closets.

Each closet or range of closets shall be supplied with a tank 3 x 3 x 2 feet, lined with sheet lead weighing 5 lbs. per square foot, well soldered and nailed.

The three water tanks for the general water supply shall have 10 x 4 x 3 feet and be lined with sheet lead of 5 lbs. to square foot.

Water pipes for closets shall be lead pipes $\frac{3}{4}$ inch diameter.

The pipe for feeding cold water to baths shall be a lead pipe of $\frac{3}{4}$ inch diameter. The hot water pipe shall be an iron pipe of the same diameter. Hot water pipes shall be provided with a coil running through a furnace which shall be built for this purpose in basement, at the same as the heating apparatus.

Feeding pipes to lavatories shall be lead pipes of $\frac{3}{4}$ inch diameter.

Each washing basin shall be supplied with a silver plated copper cock, plug and cham.

Each bath and washing basin shall be provided with an iron 8 overflow pipe, 2 inches diameter, with cork and screw button, connecting the same with the nearest drain pipe or water closet.

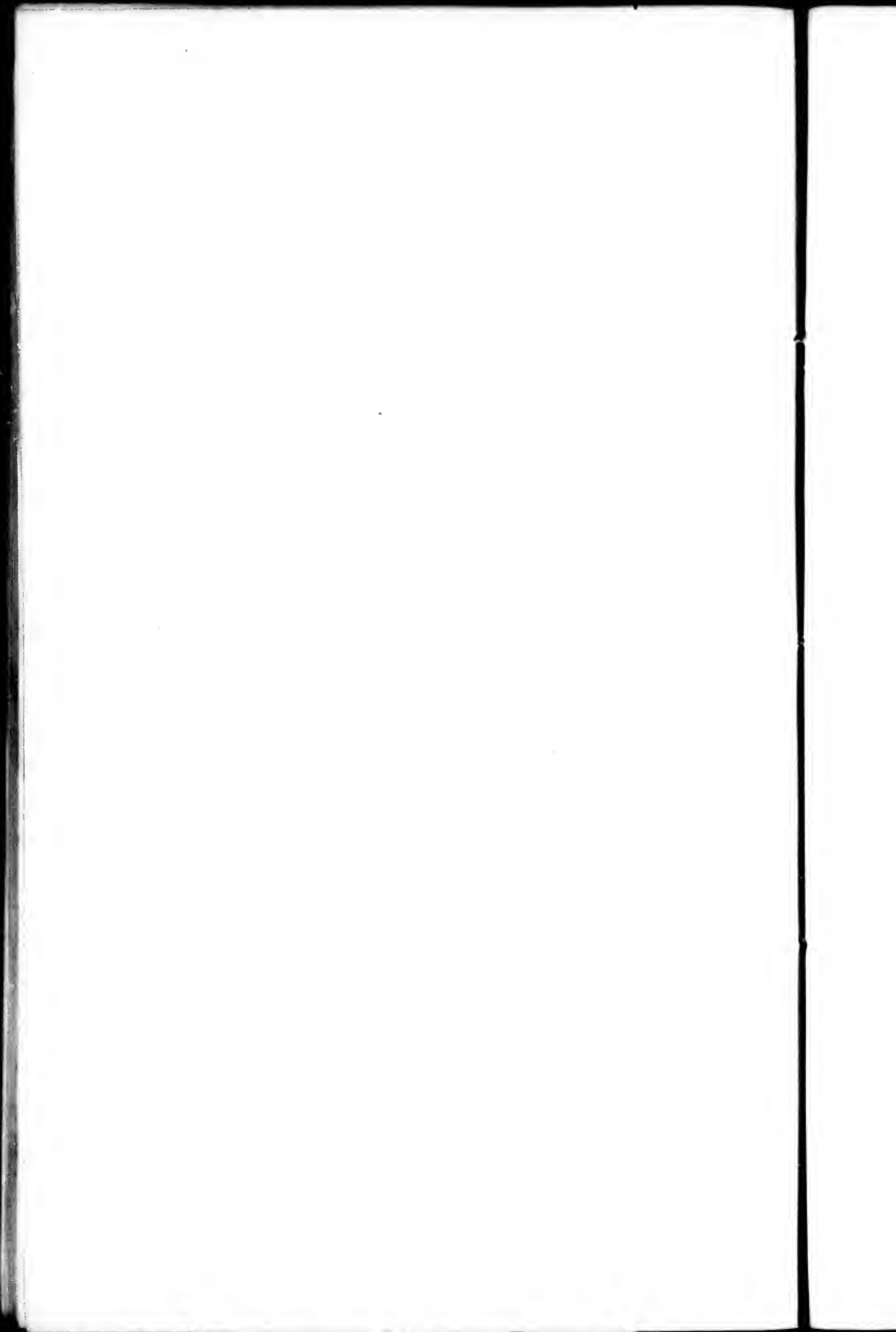
Each closet shall be connected with the nearest drain pipe by an iron 8 overflow pipe 6 inches diameter, with screw button.

For range of closets, overflow pipes may be connected with one single overflow pipe; but in this case there shall be a 8 to each closet.

Closets shall be of the system called *Pan-water closet*, with white china basin and lined copper under-basin, fixed in the most perfect way and worked by copper levers, valves wire, handles, pulls and other requisite fixtures.

2 inches water pipes, except those specified to be iron, shall be lead pipes weighing 16 $\frac{1}{2}$ lbs.

Convey gas, through a 2 inches diameter pipe, from the street main pipe nearest to gas works, to the buildings. From this 2 inches pipe, through branch pipes of various dimensions, convey the gas to each block, on every floor in every room and corridor, to the Legislative Chamber and wherever required.



The pipes shall be laid to a fair level, thoroughly tested by a fire pump and gauge; all pipes to be laid and tested before the floor beams are put down.

The choice of all gazehers, lustres, brackets, for every room shall be left to the Commissioner of Public works and the value of these articles shall not exceed \$5,000.00 for all.

Detailed specifications shall be prepared for the carrying out of the work and fixing the number of lights in each room.

PAINTERS AND GLAZIERS WORK.

The whole of the materials to be used in painting and glazing shall be of the best quality of the kind that is possible to be obtained. The colours shall be well and thoroughly mixed and laid with greatest care and the workmanship shall be of the most superior character.

Knot with the best spirit knotting, stop, prime and then paint in three coats of genuine oil colors, mixed with the best white lead and linseed oil, all the exterior and interior wood work and all work usually painted, including winter sashes and winter doors. All the above to be finished to such tints as directed and have three coats of paint. External doors to be primed after priming, four coats finished to choice and twice varnished with best copal varnish No. 1. Oil, and varnish three times, with the best copal varnish No. 1. Prime all sashes before glazing and all frames before building in.

After sashes are primed, back putty, putty, pin and glaze the whole of the windows, winter sashes, fanlights, partition glass doors, etc., with the following description of glass:—all casement and winter sashes, including those of dormers and fanlights, shall be glazed with 26 oz. S network glass. Venetian doors shall be glazed with obscured glass.

Sky-lights of block B shall be glazed $\frac{1}{4}$ inch obscured glass.

The glass throughout shall be of the best description of the several kinds specified and free from specks, blisters, clouds or other imperfections.

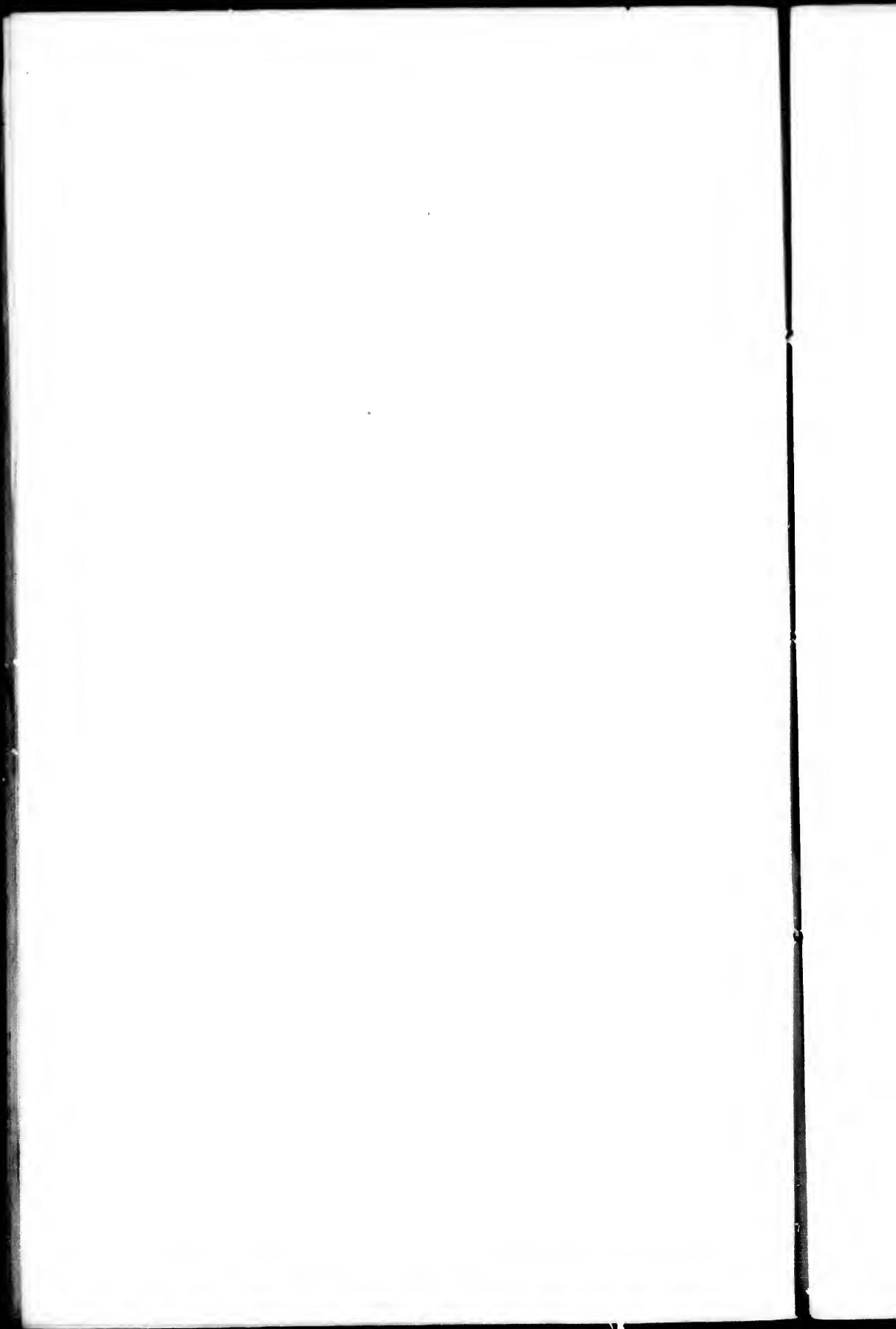
The whole of the painter's and glazier's work shall be left clean, whole and perfect at the termination of work.

HEATING APPARATUS.

Every room, hall, lobby, corridor, passage, staircase, water-closet and place other than a room, throughout blocks A, B, C, D, and E shall be heated and kept, if so required, at the temperature of from sixty-five to seventy degrees Fahrenheit, and proper stop cocks and registers shall be placed so as to regulate independently every room, lobby, etc.

Before being accepted by the Department of Public Works, the three boilers shall be tested to a pressure of 125 pounds per square inch, cold water pressure.

The heating system shall be hot water. The works which it will require shall be carried out according to detailed drawings and specifications. All materials shall be of the very best quality, such as specified in detail, as also those of ventilation apparatus, which shall be carried out in the same manner.



ESTIMATE OF WORKS.

BLOCK A.

For excavation, drainage, stone and brick masonry, plastering, cornices, concrete, vaults, paving, &c., the sum of.....	\$31,500	
For cut stone, carving and course stone required for porticoes, facings, staircases, cornices, attics, windows, &c., the sum of	33,000	
For carpenter's and joiner's work, galvanised iron roofing and slating, painting, glazing, dome, iron work, &c., to complete this block, the sum of.....	23,000	\$87,500

BLOCK B.

For excavation, stone and brick masonry, iron doors, plastering, cornices, vaults, concrete, paving, etc., the sum of.....	27,000	
For cut stone, carving, course stone, facings, four towers, windows, cornices, interior plasters, arches in galleries, etc., the sum of	21,500	
For carpenter's and joiner's work galvanised iron, and slate roofing, painting, glazing, etc, the sum of.....	16,000	
For interior decoration of the Legislative Chamber, work to be executed according to detailed plans to be supplied, the sum of	15,000	82,500

BLOCK C.

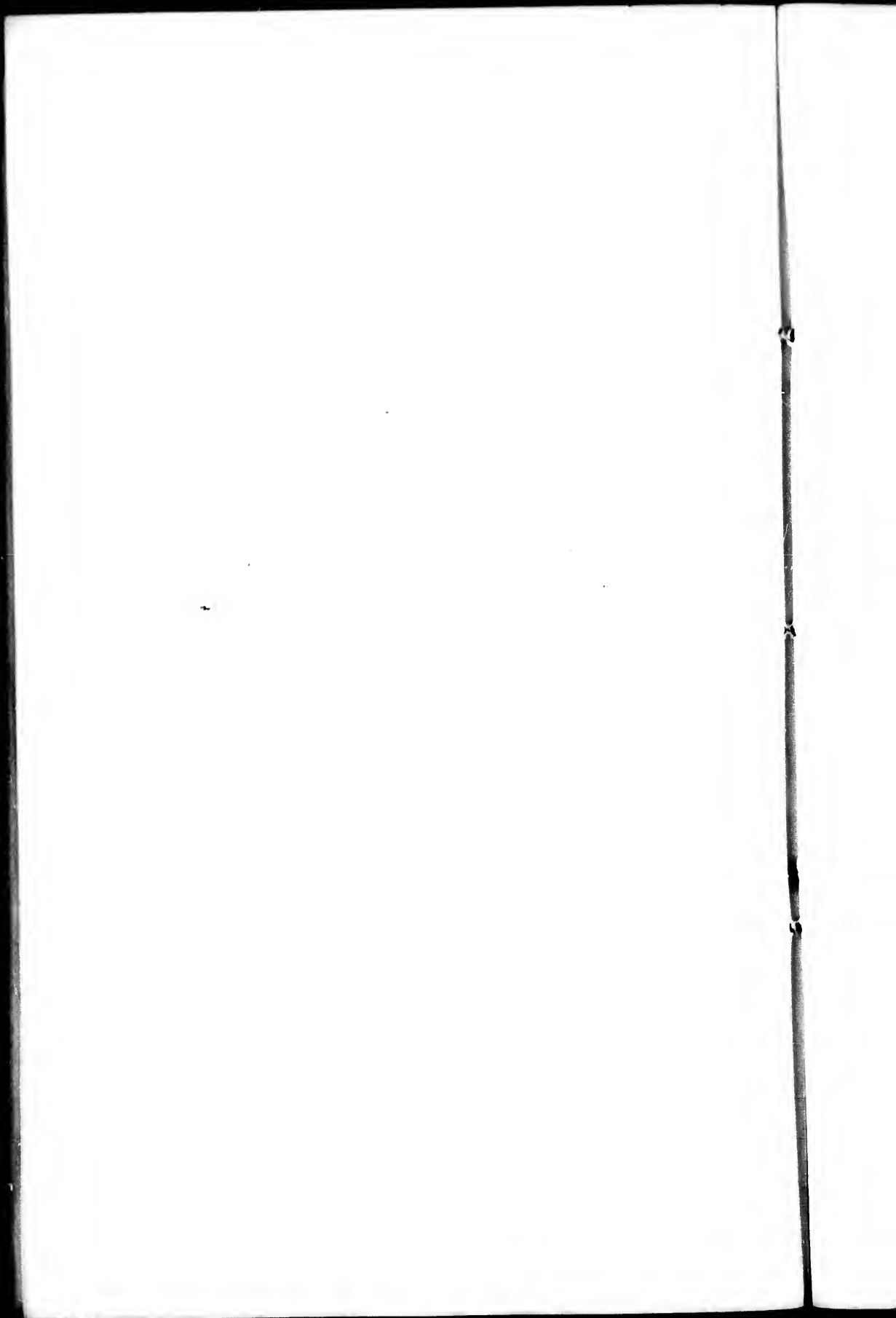
For excavation, stone and brick masonry, concrete, paving, drainage, plastering, cornices, &c., the sum of	14,500	
For cut stone, carving, course stone, cornices, &c., the sum of.....	13,000	
For carpenter's and joiner's work, galvanised iron and slate roofing, iron railings, painting, glazing, water-closets, baths, &c., the sum of	20,300	47,800

BLOCK D.

For excavation, stone and brick masonry, concrete, paving, drainage, plastering, vaults, &c., the sum of.....	16,200	
For cut stone, carving, course stone, windows, counter-forts, &c., the sum of	15,000	
For carpenter's and joiner's work, galvanised iron and slate roofing, &c., painting, glazing, centres for Library ceilings and interior sky-light, &c., the sum of.....	12,800	
For interior decoration of Library, works not mentioned above and to be specified and shown on detailed drawings and specifications, the sum of	15,000	59,600

BLOCK E.

For excavation, stone and brick masonry, course stone, concrete, paving, cornices, plastering, drainage, water-closet, &c., the sum of	32,000	
----------------------------------------------------------------------------------------------------------------------------------------------	--------	--



For cut stone, carving, course stone, windows, porticoes, interior and exterior stairs, &c., the sum of.....	31,000	
For carpenter's and joiner's work, galvanised and slate roofing, painting, glazing, water closet, etc., the sum of.....	18,000	81,000

BLOCK F.

For all works on this block, the same specifications and estimations as for block E, etc., a total of.....		81,000
------------------------------------------------------------------------------------------------------------	--	--------

GENERAL.

For the five blocks .		
Heating and ventilation apparatus	40,000	
Lighting, gas fitting, etc.....	5,000	
Superintendance of works, plans and contingencies,	15,600	60,600
		<hr/>
		£500,000

*Specification and general description of
Plans, which have obtained the Second
prize at the Convention, called for by the
Government of Ontario, on the 15th of October 1880,
(signed Waterloo) submitted by François
Évariste Berlinguet, Architect of Québec.
(signed) F. E. Berlinguet.*

