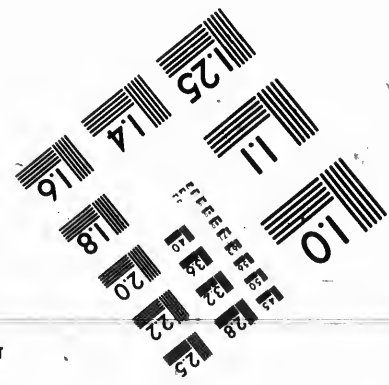
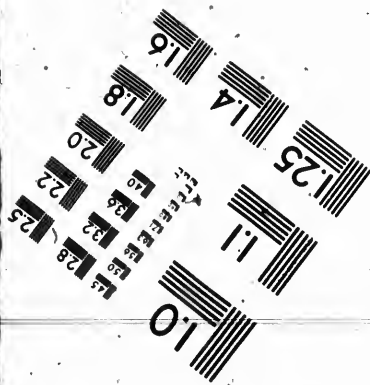
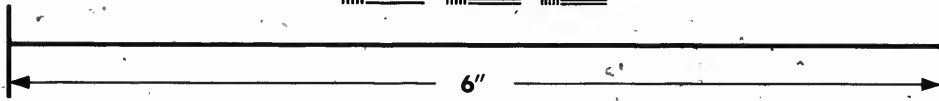
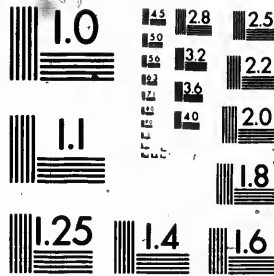


**IMAGE EVALUATION  
TEST TARGET (MT-3)**



**Photographic  
Sciences  
Corporation**

23 WEST MAIN STREET  
WEBSTER, N.Y. 14580  
(716) 872-4503

**CIHM  
Microfiche  
Series  
(Monographs)**

**ICMH  
Collection de  
microfiches  
(monographies)**



**Canadian Institute for Historical Microreproductions / Institut canadien de microreproductions historiques**

**© 1992**

Technical and Bibliographic Notes / Notes techniques et bibliographiques

The Institute has attempted to obtain the best original copy available for filming. Features of this copy which may be bibliographically unique, which may alter any of the images in the reproduction, or which may significantly change the usual method of filming, are checked below.

L'Institut a microfilmé le meilleur exemplaire qu'il lui a été possible de se procurer. Les détails de cet exemplaire qui sont peut-être uniques du point de vue bibliographique, qui peuvent modifier une image reproduite, ou qui peuvent exiger une modification dans la méthode normale de filmage sont indiqués ci-dessous.

- Coloured covers/  
Couverture de couleur
- Covers damaged/  
Couverture endommagée
- Covers restored and/or laminated/  
Couverture restaurée et/ou pelliculée
- Cover title missing/  
Le titre de couverture manque
- Coloured maps/  
Cartes géographiques en couleur
- Coloured ink (i.e. other than blue or black)/  
Encre de couleur (i.e. autre que bleue ou noire)
- Coloured plates and/or illustrations/  
Planches et/ou illustrations en couleur
- Bound with other material/  
Relié avec d'autres documents
- Tight binding may cause shadows or distortion along interior margin/  
La reliure serrée peut causer de l'ombre ou de la distorsion le long de la marge intérieure
- Blank leaves added during restoration may appear within the text. Whenever possible, these have been omitted from filming/  
Il se peut que certaines pages blanches ajoutées lors d'une restauration apparaissent dans le texte, mais, lorsque cela était possible, ces pages n'ont pas été filmées.
- Additional comments:/  
Commentaires supplémentaires:

- Coloured pages/  
Pages de couleur
- Pages damaged/  
Pages endommagées
- Pages restored and/or laminated/  
Pages restaurées et/ou pelliculées
- Pages discoloured, stained or foxed/  
Pages décolorées, tachetées ou piquées
- Pages detached/  
Pages détachées
- Showthrough/  
Transparence
- Quality of print varies/  
Qualité inégale de l'impression
- Continuous pagination/  
Pagination continue
- Includes index(es)/  
Comprend un (des) index
- Title on header taken from: /  
Le titre de l'en-tête provient:
- Title page of issue/  
Page de titre de la livraison
- Caption of issue/  
Titre de départ de la livraison
- Masthead/  
Générique (périodiques) de la livraison

This item is filmed at the reduction ratio checked below/  
Ce document est filmé au taux de réduction indiqué ci-dessous

10X	12X	14X	16X	18X	20X	22X	24X	26X	28X	30X	32X
						✓					

The copy filmed here has been reproduced thanks to the generosity of:

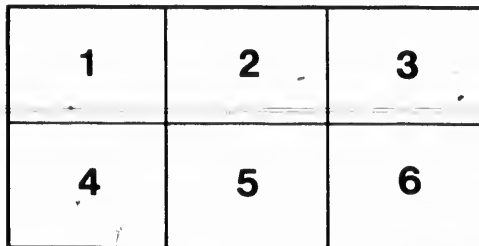
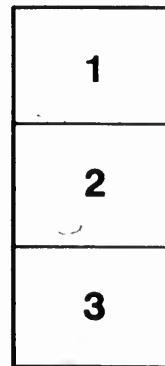
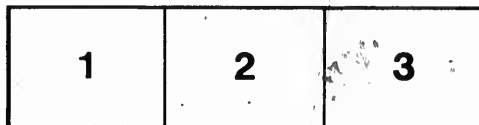
National Library of Canada

The images appearing here are the best quality possible considering the condition and legibility of the original copy and in keeping with the filming contract specifications.

Original copies in printed paper covers are filmed beginning with the front cover and ending on the last page with a printed or illustrated impression, or the back cover when appropriate. All other original copies are filmed beginning on the first page with a printed or illustrated impression, and ending on the last page with a printed or illustrated impression.

The last recorded frame on each microfiche shall contain the symbol  $\rightarrow$  (meaning "CONTINUED"), or the symbol  $\nabla$  (meaning "END"), whichever applies.

Maps, plates, charts, etc., may be filmed at different reduction ratios. Those too large to be entirely included in one exposure are filmed beginning in the upper left hand corner, left to right and top to bottom, as many frames as required. The following diagrams illustrate the method:



L'exemplaire filmé fut reproduit grâce à la générosité de:

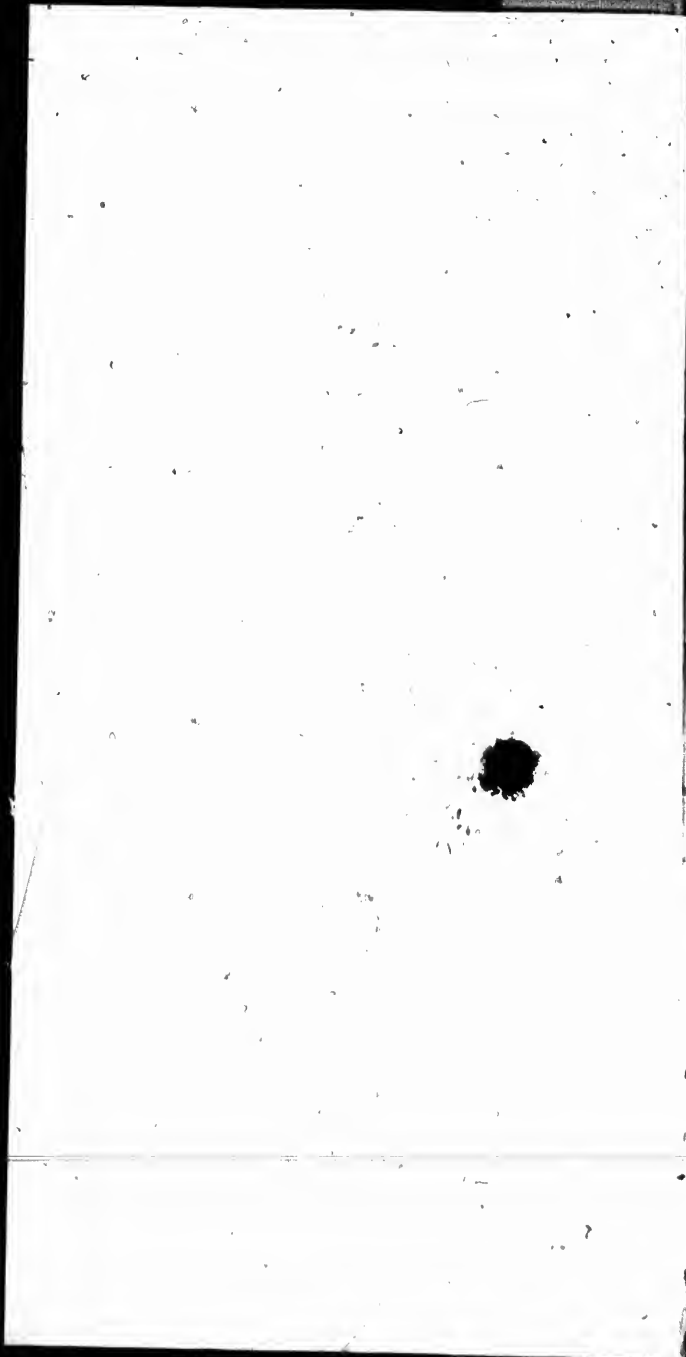
Bibliothèque nationale du Canada

Les images suivantes ont été reproduites avec le plus grand soin, compte tenu de la condition et de la netteté de l'exemplaire filmé, et en conformité avec les conditions du contrat de filmage.

Les exemplaires originaux dont la couverture en papier est imprimée sont filmés en commençant par le premier plat et en terminant soit par la dernière page qui comporte une empreinte d'impression ou d'illustration, soit par le second plat, selon le cas. Tous les autres exemplaires originaux sont filmés en commençant par la première page qui comporte une empreinte d'impression ou d'illustration et en terminant par la dernière page qui comporte une telle empreinte.

Un des symboles suivants apparaîtra sur la dernière image de chaque microfiche, selon le cas: le symbole  $\rightarrow$  signifie "A SUIVRE", le symbole  $\nabla$  signifie "FIN".

Les cartes, planches, tableaux, etc., peuvent être filmés à des taux de réduction différents. Lorsque le document est trop grand pour être reproduit en un seul cliché, il est filmé à partir de l'angle supérieur gauche, de gauche à droite, et de haut en bas, en prenant le nombre d'images nécessaire. Les diagrammes suivants illustrent la méthode.



University of Montreal

HOLIDAY TOURS

THROUGH

# EVANGELINE'S LAND



CAPE SPLIT  
FROM BAXTERS FIS.

## DOMINION ATLANTIC RAILWAY

GENERAL OFFICES: KENTVILLE, NOVA SCOTIA  
W. R. CAMPBELL, General Manager  
K. SUTHERLAND, Superintendent  
P. GIPKINS, General Passenger Agent  
J. CARROLL, General Freight Agent

FC 2317

SUMMER, 1896.

16-

**DOMINION ATLANTIC RAILWAY**

**Evangeline Route**

TOURIST TICKETS

ON SALE JUNE 1 TO SEPT. 30, AND GOOD FOR PASSAGE UP TO NOVEMBER 1.

SUPERB PULLMAN PALACE  
DINING CAR AND PARLOR CAR SERVICE  
FAMOUS "FLYING BLUENOSE" EXPRESSES, LUXURIOUSLY FITTED,  
PERFECTED BY A CUISINE OF PARISIAN EXCELLENCE, OPERATING  
THE ONLY ROUTE WORTH PATRONIZING  
For Comfort, Variety and Exquisiteness of Scenery, to and from

**BOSTON**

**HALIFAX ST. JOHN**

IN CONNECTION WITH

**Splendid Steel Clyde-Built Electric-Lighted Steamers**

The Royal Mail Steamship "PRINCE RUPERT" of the  
DOMINION ATLANTIC RAILWAY, operating the trunk service between ST.  
JOHN and DIGBY, is the fastest and finest passenger steamer on the Eastern  
seaboard.

**THE LAND OF EVANGELINE**

THE TOURIST'S PARADISE

THE SPORTSMAN'S ARCADIA

THE WONDERLAND OF ARTISTS

**The Best Climate on the Footstool**

Its coves and rivers afford the delights of inexhaustible fishing of salmon,  
trout, etc. The primeval forest is chokeful of good sport which does not  
imply distance from cheap first-class Hotels. It is a poetic land, full of  
thrilling associations, historic and romantic charm—the Mecca of tens of  
thousands of pilgrims—the ideal holiday resort of the North American  
Continent.

THE SHORT ROUTE FOR

**PRINCE EDWARD ISLAND AND CUMBERLAND**

VIA KINGSFORT AND PARRSBORO

Across the land-locked waters of the Basin of Minas, with its rich panoramas  
of Scenic Beauties, under the very frow of the Majestic Blomidon.



TO  
a  
and  
line'  
T  
idyll  
the L  
tent  
melle  
the p  
poetr  
I  
the  
appl  
enjoy  
Blom  
T  
not  
mak  
refre



RAILWAY

te

NOVEMBER 1.

ICE  
OUSLY FITTED,  
PERATING  
NG  
and from

N  
Steamers

ERT" of the  
E between ST.  
on the Eastern

NE

ARTISTS  
otstool

ng of salmon,  
ich does not  
land, full of  
ca of tens of  
th American

ERLAND

ch panorama  
omidon.



*TO paint the lily is, in Shakspeare's words, wasteful and ridiculous excess. To sketch the land of poetry and romance made immortal in Longfellow's "Evangeline" is, similarly, but a vain attempt to gild refined gold.*

*The American poet, who transmuted into an exquisite idyll the story that Hawthorne cast aside, never visited the Land of Acadie, "home of the happy." He was content to draw all the familiar Cuyt-like pictures, whose mellow radiance is so well known to us in the pages of the poem, from his imagination. They are pictures of a poetic land.*

*It will be well at once to say that the reality outstrips the picture. Who that has looked upon its vistas of apple orchards, a very ocean of white blossoms, or has enjoyed the beauties of landscape and seascape visible from Blomidon's brow, can parallel its glories elsewhere?*

*There is a life-giving vigor in the air. Sunshine does not bring languor. Italian skies and temperate days make of the Nova Scotian summer a time of rest and refreshing.*







## TOURS FROM HALIFAX.

**No. 1. Halifax to Digby, St. John. \$7.50**

Route: D. A. R. to Digby, "Prince Rupert" to St. John.  
Return same route.

For side trip Kentville to Parrsboro and return, via D. A. R.  
and Evangeline Navigation Co., add \$1.85.

For side trip Middleton to Bridgewater and return, via C. R.,  
add \$2.50.

For side trip Middleton to Lunenburg and return, via C. R.,  
add \$3.20.

For side trip Digby to Yarmouth and return, add \$2.70.

**No. 2. Halifax to Digby, St. John, Halifax. 10.50**

Route: D. A. R. to Digby, "Prince Rupert" to St. John,  
I. C. R. to Halifax.

Side trips same as No. 1 can be added.

**No. 3. Halifax to Digby, St. John, Boston, St. John, Halifax. 26.50**

Route: D. A. R. to Digby, "Prince Rupert" to St. John,  
Rail to Boston, Rail Boston to St. John, I. C. R. to Halifax.

**No. 4. Halifax to Digby, St. John, Boston, Yarmouth, Halifax. 21.50.**

Route: D. A. R. to Digby, "Prince Rupert" to St. John,  
Rail to Boston, Yarmouth S.S. Co. to Yarmouth, D. A. R.  
to Halifax.

**No. 5. Halifax to Yarmouth, Boston, St. John, Halifax. 23.00**

Route: D. A. R. to Yarmouth, Yarmouth S.S. Co. to  
Boston, Rail to St. John, I. C. R. to Halifax.

**No. 6. Halifax to Yarmouth, Boston, Halifax. 14.50**

Route: D. A. R. to Yarmouth, Yarmouth S.S. Co. to  
Boston, Plant S.S. Line to Halifax.

For side trip Boston to New York and return, via Fall  
River Line, add \$8.00.



eline  
te

**FAX.**

\$7.50

John.

A. R.

C. R.,

C. R.,

10.50

John,

St. 20.50

John,

Halifax.

ar- 21.50.

ohn,

A. R.

an, 23.00

.o. to

. 14.50

.o. to

Fall

line  
e



*TOURS FROM HALIFAX—Continued.*

**No. 7. Halifax to Yarmouth, Digby, St. John, \$12.50  
Digby, Halifax.**

Route: D. A. R. to Yarmouth, D. A. R. to Digby,  
"Prince Rupert" to St. John, "Prince Rupert" to Digby,  
D. A. R. to Halifax.

**No. 8. Halifax to Yarmouth, Lunenburg, Mid- 12.85  
dleton, Halifax.**

Route: D. A. R. to Yarmouth, Yarmouth S.S. Co. to  
Lunenburg, C. R. to Middleton, D. A. R. to Halifax.  
For side trip Bridgewater to Liverpool and return, via  
Stage, add \$3.00.

**No. 9. Halifax to Yarmouth, Boston, New York. 23.35**

Route: D. A. R. to Yarmouth, Yarmouth S.S. Co. to  
Boston, Fall River Line to New York. Return same  
route.

**No. 10. Halifax to Yarmouth, Boston, New York, 32.00  
Boston, St. John, Halifax.**

Route: D. A. R. to Yarmouth, Yarmouth S.S. Co. to  
Boston, Fall River Line to New York, N. Y., N. H. & H.  
(Shore line) to Boston, Rail to St. John, I. C. R. to  
Halifax.

**No. 11. Halifax to Yarmouth, Boston, New York, 30.48  
Boston, St. John, Digby, Halifax.**

Route: D. A. R. to Yarmouth, Yarmouth S.S. Co. to  
Boston, Fall River Line to New York, N. Y., N. H. & H.  
to Albany, Boston & Albany to Boston, Rail to St. John,  
"Prince Rupert" to Digby, D. A. R. to Halifax.

**No. 12. Halifax to Yarmouth, Halifax. 10.50**

Route: D. A. R. to Yarmouth. Return same route.

**No. 13. Halifax to Yarmouth, Liverpool, Bridge- 13.00  
water, Middleton, Halifax.**

Route: D. A. R. to Yarmouth, Yarmouth S.S. Co. to  
Liverpool, Balcom's Stage to Bridgewater, C. R. to  
Middleton, D. A. R. to Halifax.





TOURS FROM HALIFAX—Continued.

**No. 14. Halifax to Yarmouth, Boston, Montreal, \$35.00  
St. John, Digby, Halifax.**

Route: D. A. R. to Yarmouth, Yarmouth S.S. Co. to Boston, Boston & Maine to White River Junction, Central Vermont to St. John, Grand Trunk to Montreal, thence to Levis, I. C. R. to St. John (via Moncton), "Prince Rupert" to Digby, D. A. R. to Halifax.

**No. 15. Halifax to Yarmouth, Boston, Montreal, 32.55  
Quebec, Levis, Halifax.**

Route: D. A. R. to Yarmouth, Yarmouth S.S. Co. to Boston, Boston & Maine to White River Junction, Central Vermont to St. John, Grand Trunk to Montreal, Richelieu & Ontario Navigation Co. to Quebec, Ferry to Levis, I. C. R. to Halifax.

For side trip Montreal to Ottawa and return, via Ottawa River Navigation Co., add \$4.00; via C. A. R., add \$5.00.

**\*No. 16. Halifax to Yarmouth, Boston, Montreal, 24.00  
Quebec, Levis, Springhill Junction,  
Parrsboro, Kingsport, Halifax.**

Route: D. A. R. to Yarmouth, Yarmouth S.S. Co. to Boston, Boston & Maine to White River Junction, Central Vermont to St. John, Grand Trunk to Montreal, Richelieu & Ontario Navigation Co. to Quebec, Ferry to Levis, I. C. R. to Springhill Junction, Cumberland Railway to Parrsboro, Evangeline Navigation Co. to Kingsport, D. A. R. to Halifax.

For side trip from Quebec to Roberval and return, via Quebec and Lake St. John Railway, add \$7.50.

**No. 17. Halifax to Yarmouth, Boston, Montreal, 35.05  
Quebec, Levis, St. John, Digby, Halifax.**

Route: D. A. R. to Yarmouth, Yarmouth S.S. Co. to Boston, Boston & Maine to Newport, C. P. R. to Montreal, C. P. R. or Richelieu & Ontario Navigation Co. to Quebec, Ferry to Levis, I. C. R. to St. John, via Moncton, "Prince Rupert" to Digby, D. A. R. to Halifax.

\*Tours marked thus do not include the I. C. R. proportion to or from Springhill Junction.

Agents will advise passengers to purchase local tickets between these points.



geline  
oute

real, \$35.00

Co. to  
unction,  
ontreal,  
onction),

real, 32.55

Co. to  
unction,  
ontreal,  
erry to

Ottawa  
f \$5.00.

real, 24.00  
n,

Co. to  
unction,  
ontreal,  
erry to  
d Rail-  
gsport,

rn, via

real, 35.05  
ifax.

Co. to  
d Mon-  
Co. to  
onction,

portion  
ets be-

geline  
ute



TOURS FROM HALIFAX—Continued.

**No. 18. Halifax to Yarmouth, Boston, New York, \$40.55  
Niagara Falls, Toronto, Montreal,  
Quebec, Levis, Halifax.**

Route: D. A. R. to Yarmouth, Yarmouth S.S. Co. to Boston, Fall River Line to New York, New York Central & Hudson River R.R. to Niagara Falls, G. T. R. to Toronto, G. T. R. or Richelieu & Ontario Navigation Co. to Montreal, Richelieu & Ontario Navigation Co. to Quebec, Ferry to Levis, I. C. R. to Halifax.

**No. 19. Halifax to Yarmouth, Boston, New York, 51.50  
Niagara Falls, Toronto, Montreal,  
Quebec, Summerside, Halifax.**

Route: D. A. R. to Yarmouth, Yarmouth S.S. Co. to Boston, Fall River Line to New York, New York Central & Hudson River R.R. to Niagara Falls, Grand Trunk to Toronto, G. T. R. or Richelieu & Ontario Navigation Co. to Montreal, Quebec S.S. Co. to Summerside, S.S. Fastnet to Halifax, including meals on Quebec S.S. Co. If without meals, \$4.50 less.

**No. 20. Halifax to Yarmouth, Boston, New York, 51.50  
Niagara Falls, Toronto, Montreal,  
Quebec, Summerside, Halifax.**

Route: D. A. R. to Yarmouth, Yarmouth S.S. Co. to Boston, Fall River Line to New York, New York Central & Hudson River R.R. to Niagara Falls, Niagara Navigation Co. to Toronto, C. P. R. or Richelieu & Ontario Navigation Co. to Montreal, Quebec S.S. Co. to Summerside, S.S. Fastnet to Halifax, including meals on Quebec S.S. Co. If without meals, \$4.50 less.

**No. 21. Halifax to Digby, St. John, Montreal, 40.75  
Quebec, Summerside, Charlottetown,  
Halifax.**

Route: D. A. R. to Digby, "Prince Rupert" to St. John, C. P. R. to Montreal, C. P. R. to Quebec, Quebec S.S. Co. to Summerside, P. E. Island Railway to Charlottetown, S.S. Fastnet to Halifax, including meals on Quebec S.S. Co. If without meals, \$4.50 less.

For side trip from Summerside to Tignish and return, add \$3.10.

For side trip Charlottetown to Georgetown and return, add \$2.10.

For side trip from Charlottetown to Souris and return, add \$2.70.





TOURS FROM HALIFAX—Continued.

**\*No. 22. Halifax to Digby, St. John, Montreal, \$24.60  
Quebec, Levis, Springhill Junction,  
Parrsboro, Kingsport, Halifax.**

Route: D. A. R. to Digby, "Prince Rupert" to St. John, C. P. R. to Montreal, C. P. R. or Richelieu & Ontario Navigation Co. to Quebec, Ferry to Levis, I. C. R. to Springhill Junction, Cumberland Railway to Parrsboro, Evangeline Navigation Co. to Kingsport, D. A. R. to Halifax.

**No. 23. Halifax to Digby, St. John, Montreal, 40.25  
Ottawa, Montreal, Quebec, Levis,  
Chatham Junction, Fredericton,  
St. John, Digby, Halifax.**

Route: D. A. R. to Digby, "Prince Rupert" to St. John, C. P. R. to Ottawa, C. P. R. or Ottawa River Navigation Co. to Montreal, C. P. R. or Richelieu & Ontario Navigation Co. to Quebec, Ferry to Levis, I. C. R. to Chatham Junction, Canada Eastern to Fredericton, Star Line to St. John, "Prince Rupert" to Digby, D. A. R. to Halifax.

**\*No. 24. Halifax to Digby, St. John, Edmunds- 17.85  
ton, Riviere du Loup, Springhill  
Junction, Parrsboro, Kings-  
port, Halifax.**

Route: D. A. R. to Digby, "Prince Rupert" to St. John, C. P. R. to Edmundston, via Fredericton, Temiscouata Railway to Riviere du Loup, I. C. R. to Springhill Junction, Cumberland Railway to Parrsboro, Evangeline Navigation Co. to Kingsport, D. A. R. to Halifax.

For side trip from Riviere du Loup to Saguenay and return, via the Richelieu & Ontario Navigation Co., add \$5.00.

**No. 25. Halifax to Digby, St. John, Fredericton. 10.50**

Route: D. A. R. to Digby, "Prince Rupert" to St. John, C. P. R. to Fredericton. Return same route.

**No. 26. Halifax to Digby, St. John, Woodstock. 13.65**

Route: D. A. R. to Digby, "Prince Rupert" to St. John, C. P. R. to Woodstock. Return same route.

\*Tours marked thus do not include I. C. R. proportion to or from Springhill Junction.  
Agents will advise passengers to purchase local tickets between these points.



geline  
oute

real, \$24.00  
n,

John,  
Ontario  
R. to  
rsboro,  
R. to

real, 40.25

John,  
igation  
aviga-  
atham  
to St.  
ifax.

ads- 17.85

John,  
ouata  
Junc-  
Navi-

return,  
oo.

on. 10.50

John,

ck. 13.65

John,

ion to  
ets be-

geline  
ute



TOURS FROM HALIFAX—Continued.

**No. 27. Halifax to Digby, St. John, St. Andrews, \$12.15 or St. Stephen.**

Route: D. A. R. to Digby, "Prince Rupert" to St. John, C. P. R. to St. Andrews or St. Stephen. Return same route.

**\*No. 28. Halifax to Digby, St. John, Fredericton, 13.05 Chatham Junction, Springhill Junction, Parrsboro, Kingsport, Halifax.**

Route: D. A. R. to Digby, "Prince Rupert" to St. John, C. P. R. to Fredericton, Canada Eastern to Chatham Junction, I. C. R. to Springhill Junction, Cumberland Railway to Parrsboro, Evangeline Navigation Co. to Kingsport, D. A. R. to Halifax.

**No. 29. Halifax to Digby, St. John, Edmundston, 30.85 Riviere du Loup, Point du Chene, Summerside, Charlottetown, Pictou, Halifax.**

Route: D. A. R. to Digby, "Prince Rupert" to St. John, C. P. R. to Edmundston, Temiscouata Railway to Riviere du Loup, I. C. R. to Point du Chene, Charlottetown Steam Navigation Co. to Summerside, Prince Edward Island Railway to Charlottetown, Charlottetown Steam Navigation Co. to Pictou, I. C. R. to Halifax.

**No. 30. Halifax to Digby, St. John, Montreal, 36.40 Quebec, Chicoutimi, Riviere du Loup, Halifax.**

Route: D. A. R. to Digby, "Prince Rupert" to St. John, C. P. R. to Montreal, C. P. R. or Richelieu & Ontario Navigation Co. to Quebec, Quebec & Lake St. John Railway to Chicoutimi, Richelieu & Ontario Navigation Co. to Riviere du Loup, I. C. R. to Halifax.

**\*No. 31. Halifax to Digby, St. John, Springhill 8.85 Junction, Parrsboro, Kingsport, Halifax.**

Route: D. A. R. to Digby, "Prince Rupert" to St. John, I. C. R. to Springhill Junction, Cumberland Railway to Parrsboro, Evangeline Navigation Co. to Kingsport, D. A. R. to Halifax.

\*Tours marked thus do not include I. C. R. proportion to or from Springhill Junction. Agents will advise passengers to purchase local tickets between these points.





*TOURS FROM HALIFAX—Continued.*

- No. 32. Halifax to Digby. \$7.30**  
 Route: D. A. R. to Digby. Return same route.
- No. 33. Halifax to Middleton, Lunenburg, Yarmouth, Halifax. 12.85**  
 Route: D. A. R. to Middleton, C. R. to Lunenburg, Yarmouth S.S. Co. to Yarmouth, D. A. R. to Halifax.
- No. 34. Halifax to Middleton, Bridgewater, Liverpool, Halifax. 10.00**  
 Route: D. A. R. to Middleton, C. R. to Bridgewater, Balcom's Stage to Liverpool. Return same route.
- No. 35. Halifax to Middleton, Bridgewater, Halifax. 4.75**  
 Route: D. A. R. to Middleton, C. R. to Bridgewater, Coastal Steam Packet Company to Halifax.
- No. 36. Halifax to Middleton, Lunenburg, Halifax. 5.65**  
 Route: D. A. R. to Middleton, C. R. to Lunenburg, Lunenburg Packet Co. to Halifax.
- No. 37. Halifax to Kingsport, Parrsboro. 5.40**  
 Route: D. A. R. to Kingsport, Evangeline Navigation Co. to Parrsboro. Return same route.
- \*No. 38. Halifax to Kingsport, Parrsboro, Springhill Junction, Halifax. 4.35**  
 Route: D. A. R. to Kingsport, Evangeline Navigation Co. to Parrsboro, Cumberland Railway to Springhill Junction, I. C. R. to Halifax.

\*Tours marked thus do not include I. C. R. proportion to or from Springhill Junction.  
 Agents will advise passengers to purchase local tickets between these points.



geline  
ute

\$7.30

ar- 12.85

Yar-

10.00

Bal-

4.75

ater,

5.05

ourg,

5.40

Co.

g- 4.35

Co.  
tion,

on to

be-

eline  
te



TOURS FROM HALIFAX—Continued.

**\*No. 30. Halifax to Kingsport, Parrsboro, Springhill Junction, Point du Chene, Summerside, Charlottetown, Pictou, Halifax. \$11.00**

Route: D. A. R. to Kingsport, Evangeline Navigation Co. to Parrsboro, Cumberland Railway to Springhill Junction, I. C. R. to Point du Chene, Charlottetown Steam Navigation Co. to Summerside, Prince Edward Island Railway to Charlottetown, Charlottetown Steam Navigation Co. to Pictou, I. C. R. to Halifax.

**\*No. 40. Halifax to Kingsport, Parrsboro, Springhill Junction, Pictou, Charlottetown, Summerside, Point du Chene, St. John, Digby, Halifax. 15.85**

Route: D. A. R. to Kingsport, Evangeline Navigation Co. to Parrsboro, Cumberland Railway to Springhill Junction, I. C. R. (via Oxford Junction) to Pictou, Charlottetown Steam Navigation Co. to Charlottetown, Prince Edward Island Railway to Summerside, Charlottetown Steam Navigation Co. to Point du Chene, I. C. R. to St. John, "Prince Rupert" to Digby, D. A. R. to Halifax.

**\*No. 41. Halifax to Kingsport, Parrsboro, Springhill Junction, St. John, Digby, Halifax. 8.85**

Route: D. A. R. to Kingsport, Evangeline Navigation Co. to Parrsboro, Cumberland Railway to Springhill Junction, I. C. R. to St. John, "Prince Rupert" to Digby, D. A. R. to Halifax.

**\*No. 42. Halifax to Kingsport, Parrsboro, Springhill Junction, Mulgrave, Sydney or North Sydney, Halifax. 13.45**

Route: D. A. R. to Kingsport, Evangeline Navigation Co. to Parrsboro, Cumberland Railway to Springhill Junction, I. C. R. to Mulgrave, Bras d'Or Steam Navigation Co. Mulgrave to Sydney or North Sydney, I. C. R. to Halifax.

\*Tours marked thus do not include I. C. R. proportion to or from Springhill Junction.  
Agents will advise passengers to purchase local tickets between these points.







*TOURS FROM HALIFAX— Concluded.*

**\*No. 43. Halifax to Kingsport, Parrsboro, Springhill Junction, Mulgrave, Sydney or North Sydney, Halifax. \$10.45**

Route: D. A. R. to Kingsport, Evangeline Navigation Co. to Parrsboro, Cumberland Railway to Springhill Junction, I. C. R. to Sydney or North Sydney, and thence to Halifax.

**\*No. 44. Halifax to Kingsport, Parrsboro, Springhill Junction, Mulgrave, Halifax. 8.85**

Route: D. A. R. to Kingsport, Evangeline Navigation Co. to Parrsboro, Cumberland Railway to Springhill Junction, I. C. R. to Mulgrave, and thence to Halifax.

\*Tours marked thus do not include I. C. R. proportion to or from Springhill Junction. Agents will advise passengers to purchase local tickets between these points.



geline  
ute

ng- \$10.45

on Co.  
ction,  
nce to

ng- 8.85

on Co.  
ction,

ion to  
ts be-

eline  
te



## TOURS FROM KENTVILLE.

**No. 45. Kentville to Halifax, Mulgrave, Sydney, \$21.45  
St. John, Digby, Kentville.**

Route: D. A. R. to Halifax, I. C. R. to Mulgrave, Bras  
d'Or Navigation Co. to Sydney and return, I. C. R. to St.  
John, "Prince Rupert" to Digby, D. A. R. to Kentville.

If one way by steamer and one way by rail, between Mul-  
grave and Sydney, or North Sydney, add \$1.45.

**No. 46. Kentville to Halifax, Pictou, Charlotte- 15.65  
town, Summerside, Point du Chene,  
St. John, Digby, Kentville.**

Route: D. A. R. to Halifax, I. C. R. to Pictou, Charlotte-  
town Steam Navigation Co. to Charlottetown, Prince Ed-  
ward Island Railway to Summerside, Charlottetown Steam  
Navigation Co. to Point du Chene, I. C. R. to St. John,  
"Prince Rupert" to Digby, D. A. R. to Kentville.

**\*No. 47. Kentville to Halifax, Springhill Junc- 4.35  
tion, Parrsboro, Kingsport, Kentville.**

Route: D. A. R. to Halifax, I. C. R. to Springhill Junc-  
tion, Cumberland Railway to Parrsboro, Evangeline Navi-  
gation Co. to Kingsport, D. A. R. to Kentville.

**No. 48. Kentville to Halifax, Riviere du Loup, 26.35  
Edmundston, Fredericton, St. John,  
Digby, Kentville.**

Route: D. A. R. to Halifax, I. C. R. to Riviere du Loup,  
Temiscouata Railway to Edmundston, C. P. R. to St.  
John, via Fredericton, "Prince Rupert" to Digby, D. A.  
R. to Kentville.

\*Tours marked thus do not include I. C. R. proportion to  
or from Springhill Junction.

Agents will advise passengers to purchase local tickets be-  
tween these points.





*TOURS FROM KENTVILLE—Continued.*

**No. 49. Kentville to Halifax, Levis, Quebec, \$33.45  
Montreal, St. John, Digby, Kentville.**

Route: D. A. R. to Halifax, I. C. R. to Levis, Ferry to Quebec, C. P. R. to Montreal and thence to St. John, "Prince Rupert" to Digby, D. A. R. to Kentville.

For side trip from Quebec to Roberval and return, via Quebec & Lake St. John Railway, add \$7.50.

For side trip from Quebec to Chicoutimi, and thence down the Saguenay River to Quebec, via Quebec & Lake St. John Railway, and Richelieu & Ontario Navigation Co., add \$10.00.

**No. 50. Kentville to Halifax, Levis, Montreal, 48.65  
Toronto, Niagara Falls, New York,  
Boston, Yarmouth, Kentville.**

Route: D. A. R. to Halifax, I. C. R. to Levis, Grand Trunk to Montreal, thence to Toronto, Niagara River Line to Niagara Falls, New York Central & Hudson River R.R. to New York, Fall River Line to Boston, Yarmouth S.S. Co. to Yarmouth, D. A. R. to Kentville.

Tickets are optional for Grand Trunk Railway or Niagara River Line between Toronto and Niagara Falls.

**No. 51. Kentville to Halifax, Levis, Quebec, 48.70  
Montreal, Toronto, Niagara Falls, New  
York, Boston, Yarmouth, Kentville.**

Route: D. A. R. to Halifax, I. C. R. to Levis, Ferry to Quebec, C. P. R. to Montreal, thence to Toronto, Niagara Navigation Co. to Niagara Falls, New York Central & Hudson River R.R. to New York, Fall River Line to Boston, Yarmouth S.S. Co. to Yarmouth, D. A. R. to Kentville.

**No. 52. Kentville to Halifax, St. John, Boston, 24.15  
Yarmouth, Kentville.**

Route: D. A. R. to Halifax, I. C. R. to St. John, Rail to Boston, Yarmouth S.S. Co. to Yarmouth, D. A. R. to Kentville.

Side trip Boston to New York by Fall River Line, add \$8.00.

**No. 53. Kentville to Halifax, Chatham Junction, 15.35  
St. John, Digby, Kentville.**

Route: D. A. R. to Halifax, I. C. R. to Chatham Junction, Canada Eastern to Fredericton, C. P. R. to St. John, "Prince Rupert" to Digby, D. A. R. to Kentville.



eline  
te

ee, \$33.15  
le.  
rry to  
John,  
a Que-  
e down  
ke St.  
n Co.,

real, 48.65  
k,

Grand  
River  
udson  
oston,  
ntville.  
iagara

bec, 48.70  
New  
e.

erry to  
iagara  
tral &  
ine to  
R. to

ton, 24.15

Rail to  
R. to  
\$8.00.

on, 15.35

unction,  
John,

eline  
te



TOURS FROM KENTVILLE—Continued.

**No. 54. Kentville to Halifax, Levis, Montreal, \$33.65  
Boston, Yarmouth, Kentville.**

Route: D. A. R. to Halifax, I. C. R. to Levis, Grand Trunk Railway to Montreal, Grand Trunk to St. Johns, Central Vermont to White River Junction, Boston & Maine to Boston, Yarmouth S.S. Co. to Yarmouth, D. A. R. to Kentville.

**No. 55. Kentville to Halifax, Levis, Quebec, 33.70  
Montreal, Boston, Yarmouth, Kentville.**

Route: D. A. R. to Halifax, I. C. R. to Levis, Ferry to Quebec, C. P. R. to Montreal, thence to Newport, Boston & Maine to Boston, Yarmouth S.S. Co. to Yarmouth, D. A. R. to Kentville.

**No. 56. Kentville to Halifax, Levis, Montreal, 36.40  
Portland, St. John, Digby, Kentville.**

Route: D. A. R. to Halifax, I. C. R. to Levis, Grand Trunk or Richelieu & Ontario Navigation Co. to Montreal, Grand Trunk to Portland, Rail to St. John, "Prince Rupert" to Digby, D. A. R. to Kentville.

**No. 57. Kentville to Halifax, Boston, Yarmouth, Kentville. 15.65**

Route: D. A. R. to Halifax, Plant S.S. Line to Boston, Yarmouth S.S. Co. to Yarmouth, D. A. R. to Kentville.

**No. 58. Kentville to Halifax, Lunenburg, 6.50  
Middleton, Kentville.**

Route: D. A. R. to Halifax, Lunenburg Packet Co. to Lunenburg, C. R. to Middleton, D. A. R. to Kentville.

**No. 59. Kentville to Halifax, Bridgewater, 5.60  
Middleton, Kentville.**

Route: D. A. R. to Halifax, Coastal Packet Co. to Bridgewater, C. R. to Middleton, D. A. R. to Kentville.  
For side trip Bridgewater to Liverpool and return, via Stage, add \$3.00.





*TOURS FROM KENTVILLE — Continued.*

- \*No. 60. Kentville to Kingsport, Parrsboro, \$11.60**  
**Point du Chene, Summerside,**  
**Charlottetown, Pictou,**  
**Halifax, Kentville.**

Route: D. A. R. to Kingsport, Evangeline Navigation Co. to Parrsboro, Cumberland Railway to Springhill Junction, I. C. R. to Point du Chene, Charlottetown Steam Navigation Co. to Summerside, Prince Edward Island Railway to Charlottetown, Charlottetown Steam Navigation Co. to Pictou, I. C. R. to Halifax, D. A. R. to Kentville,

For side trip Summerside to Tignish and return, add \$3.10.

For side trip Charlottetown to Georgetown and return, add \$2.10.

For side trip Charlottetown to Souris and return, add \$2.70.

- \*No. 61. Kentville to Kingsport, Parrsboro, 5.45**  
**Springhill Junction, St. John,**  
**Digby, Kentville.**

Route: D. A. R. to Kingsport, Evangeline Navigation Co. to Parrsboro, Cumberland Railway to Springhill Junction, I. C. R. to St. John, "Prince Rupert" to Digby, D. A. R. to Kentville.

- \*No. 62. Kentville to Kingsport, Parrsboro, 21.50**  
**Springhill Junction, Levis, Quebec,**  
**Montreal, St. John, Digby,**  
**Kentville.**

Route: D. A. R. to Kingsport, Evangeline Navigation Co. to Parrsboro, Cumberland Railway to Springhill Junction, I. C. R. to Levis, Ferry to Quebec, C. P. R. to Montreal and thence to St. John, "Prince Rupert" to Digby, D. A. R. to Kentville.

- No. 63. Kentville to Kingsport, Parrsboro, 2.70**  
**Springhill Mines, Kentville.**

Route: D. A. R. to Kingsport, Evangeline Navigation Co. to Parrsboro, Cumberland Railway to Springhill Mines. Return same route.

\*Tours marked thus do not include I. C. R. proportion to or from Springhill Junction.

Agents will advise passengers to purchase local tickets between these points.



geline  
ute

o, \$11.60

on Co.  
action,  
Navi-  
ailway  
Co. to

\$3.10.  
n, add

\$2.70.

o, 5.45

on Co.  
action,  
A. R.

ro, 21.50

on Co.  
action,  
ntreal  
Digby,

, 2.70

on Co.  
ines.

ion to  
ts be-

eline  
te



TOURS FROM KENTVILLE—Continued.

**\*No. 64. Kentville to Kingsport, Parrsboro, \$4.40  
Springhill Junction, Halifax,  
Kentville.**

Route: D. A. R. to Kingsport, Evangeline Navigation Co.  
to Parrsboro, Cumberland Railway to Springhill Junction,  
I. C. R. to Halifax, D. A. R. to Kentville.

**\*No. 05. Kentville to Kingsport, Parrsboro, 38.80  
Springhill Junction, Levis, Quebec,  
Montreal, Niagara Falls, Montreal,  
St. John, Digby, Kentville.**

Route: D. A. R. to Kingsport, Evangeline Navigation Co.  
to Parrsboro, Cumberland Railway to Springhill Junction,  
I. C. R. to Levis, Ferry to Quebec, C. P. R. to Montreal,  
C. P. R. to Toronto and return, Niagara River Line  
Toronto to Niagara Falls and return, C. P. R. to St. John,  
"Prince Rupert" to Digby, D. A. R. to Kentville.

**No. 06. Kentville to St. John, Kentville. 5.50**

Route: D. A. R. to Digby, "Prince Rupert" to St. John.  
Return same route.

**No. 07. Kentville to Digby, St. John, St. 10.15  
Andrews, Kentville.**

Route: D. A. R. to Digby, "Prince Rupert" to St. John,  
C. P. R. to St. Andrews. Return same route.

**No. 08. Kentville to Digby, St. John, Fred- 8.50  
ericton, Kentville.**

Route: D. A. R. to Digby, "Prince Rupert" to St. John,  
C. P. R. to Fredericton. Return same route.

If Star Line (both ways) between St. John and Fredericton,  
deduct \$1.25.

**No. 09. Kentville to Digby, St. John, Wood- 9.00  
stock, Kentville.**

Route: D. A. R. to Digby, "Prince Rupert" to St. John,  
Star Line to Woodstock. Return same route.

If one way by C. P. R. between St. John and Woodstock,  
add \$2.10.

\*Tours marked thus do not include I. C. R. proportion to  
or from Springhill Junction.  
Agents will advise passengers to purchase local tickets be-  
tween these points.





*TOURS FROM KENTVILLE—Concluded.*

**No. 70. Kentville to Yarmouth, Boston. \$13.40**

Route: D. A. R. to Yarmouth, Yarmouth S.S. Co. to Boston. Return same route.

Side trip Boston to New York by Fall River Line, add \$8.00.

**\*No. 71. Kentville to Yarmouth, Boston, New York, Albany, Rouse's Point, Montreal, Levis, Springhill Junction, Parrsboro, Kingsport, Kentville. 26.40**

Route: D. A. R. to Yarmouth, Yarmouth S.S. Co. to Boston, Fall River Line to New York, Hudson River Line to Albany, Delaware & Hudson R.R. to Rouse's Point, G. T. R. to Montreal and thence to Levis, I. C. R. to Springhill Junction, Cumberland Railway to Parrsboro, Evangeline Navigation Co. to Kingsport, D. A. R. to Kentville.

**No. 72. Kentville to Yarmouth, Boston, New York, Montreal, St. John, Digby, Kentville. 37.75**

Route: D. A. R. to Yarmouth, Yarmouth S.S. Co. to Boston, Fall River Line to New York, New York Central & Hudson River R.R. to Montreal, C. P. R. to St. John, "Prince Rupert" to Digby, D. A. R. to Kentville.

**No. 73. Kentville to Yarmouth, Boston, New York. 23.40**

Route: D. A. R. to Yarmouth, Yarmouth S.S. Co. to Boston, N. Y., N. H. & H. Shore Line to New York. Return same route.

For side trip up the Hudson River to Albany and return via the Hudson River Line, add \$3.50.

**No. 74. Kentville to Yarmouth, Boston, Albany, Niagara Falls, Toronto, Montreal, Quebec, Levis, Halifax, Kentville. 46.85**

Route: D. A. R. to Yarmouth, Yarmouth S.S. Co. to Boston, Boston & Albany to Albany, New York Central & Hudson River R.R. to Niagara Falls, Niagara River Line to Toronto, C. P. R. to Montreal and thence to Quebec, Ferry to Levis, I. C. R. to Halifax, D. A. R. to Kentville.

\*Tours marked thus do not include I. C. R. proportion to or from Springhill Junction.

Agents will advise passengers to purchase local tickets between these points.



eline  
te

\$13.40

. to

8.00.

ew 20.40

al,

. to

Line

Point,

R. to

boro,

R. to

ew 37.75

. to

entral

ohn,

23.40

. to

ork.

n via

ay, 40.85

. to

entral

River

ce to

R. to

on to

k be-

eline  
te



## TOURS FROM ST. JOHN.

**No. 75. St. John to Digby, Halifax. \$7.50**

Route: "Prince Rupert" to Digby, D. A. R. to Halifax.  
Return same route.

For side trip from Digby to Yarmouth and return, add \$2.70.

For side trip from Middleton to Bridgewater and return,  
via C. R., add \$2.50; to Lunenburg and return, via C. R.,  
add \$3.20.

For side trip from Kentville to Parrsboro and return, via  
Evangeline Navigation Co., add \$1.85.

**No. 76. St. John to Digby, Halifax, St. John. 10.50**

Route: "Prince Rupert" to Digby, D. A. R. to Halifax,  
I. C. R. to St. John.

Side trips same as Tour No. 75 can be added.

**No. 77. St. John to Digby, Yarmouth, Halifax, 12.50  
Digby, St. John.**

Route: "Prince Rupert" to Digby, D. A. R. to Yarmouth,  
D. A. R. to Halifax, D. A. R. to Digby, "Prince Rupert"  
to St. John.

**No. 78. St. John to Digby, Halifax, Pictou, 14.75  
Charlottetown, Summerside, Point  
du Chene, St. John.**

Route: "Prince Rupert" to Digby, D. A. R. to Halifax,  
I. C. R. to Pictou, Charlottetown Steam Navigation Co.  
to Charlottetown, Prince Edward Island Railway to  
Summerside, Charlottetown Steam Navigation Co. to  
Point du Chene, I. C. R. to St. John.

**No. 79. St. John to Digby, Halifax, Boston, 19.00  
St. John.**

Route: "Prince Rupert" to Digby, D. A. R. to Halifax,  
C. A. & Plant S.S. Line to Boston, Rail to St. John.







*TOURS FROM ST. JOHN—Continued.*

**No. 80. St. John to Digby, Halifax, Chatham Junction, Fredericton, St. John. \$13.45**

Route: "Prince Rupert" to Digby, D. A. R. to Halifax, I. C. R. to Chatham Junction, Canada Eastern to Fredericton, Star Line S.S. Co. to St. John.

If C. P.-R. Fredericton to St. John, add \$1.00.

**No. 81. St. John to Digby, Halifax, Cacouna or Riviere du Loup, Edmundston, St. John. 25.45**

Route: "Prince Rupert" to Digby, D. A. R. to Halifax, I. C. R. to Cacouna or Riviere du Loup, Temiscouata Railway from Riviere du Loup to Edmundston, C. P. R. to St. John, via Fredericton.

If via McAdam Junction, deduct \$1.45.

If stop-over on I. C. R., add \$2.10.

For side trip from Riviere du Loup to the Saguenay and return, via Richelieu & Ontario Navigation Co., add \$5.00.

**No. 82. St. John to Digby, Halifax, Levis, Montreal, St. John. 32.50**

Route: "Prince Rupert" to Digby, D. A. R. to Halifax, I. C. R. to Levis, Richelieu & Ontario Navigation Co. to Montreal, C. P. R. to St. John.

For side trip from Montreal to Ottawa and return, via C. A. R., add \$5.00.

If via the Ottawa River Navigation Co., add \$4.00.

**No. 83. St. John to Digby, Halifax, Levis, Quebec, Montreal, St. John. 32.55**

Route: "Prince Rupert" to Digby, D. A. R. to Halifax, I. C. R. to Levis, Ferry to Quebec, C. P. R. or Richelieu & Ontario Navigation Co. to Montreal, C. P. R. to St. John.

For side trip from Quebec to Roberval and return, via Quebec and Lake St. John Railway, add \$7.50.

For side trip from Quebec to Chicoutimi, via Quebec and Lake St. John Railway, and thence down the Saguenay to Quebec, via the Richelieu & Ontario Navigation Co., add \$10.00.



ngeline  
oute

ham \$13.45  
n.

Halifax,  
to Fred-

na or 25.45

Halifax,  
iscouata  
C. P. R.

may and  
d \$5.00.

32.50

Halifax,  
n Co. to  
a C. A.

32.55

Halifax,  
chelieu  
R. to

ia Que-

ec and  
may to  
n Co.,

ngeline  
nte



TOURS FROM ST. JOHN—Continued.

**No. 84. St. John to Digby, Halifax, Montreal, \$52.00  
Toronto, Niagara Falls, New York,  
Boston, St. John.**

Route: "Prince Rupert" to Digby, D. A. R. to Halifax, I. C. R. to Levis, Grand Trunk or Richelieu & Ontario Navigation Co. to Montreal, Grand Trunk or Richelieu & Ontario Navigation Co. to Toronto (meals and berths included), Grand Trunk to Niagara Falls, New York Central & Hudson River R.R. to New York, Fall River Line to Boston, Rail to St. John.

Side trips similar to Tour 83 can be added.

**No. 85. St. John to Digby, Halifax, Montreal, 52.05  
Toronto, Niagara Falls, New York,  
Boston, St. John.**

Route: "Prince Rupert" to Digby, D. A. R. to Halifax, I. C. R. to Levis, Ferry to Quebec, C. P. R. to Montreal, thence to Toronto, Niagara Navigation Co. to Niagara Falls, New York Central & Hudson River R.R. to New York, Fall River Line to Boston, Rail to St. John.

**\*No. 86. St. John to Digby, Halifax, Springhill 10.05  
Junction, Parrsboro, Kingsport,  
Digby, St. John.**

Route: "Prince Rupert" to Digby, D. A. R. to Halifax, I. C. R. to Springhill Junction, Cumberland Railway to Parrsboro, Evangeline Navigation Co. to Kingsport, D. A. R. to Digby, "Prince Rupert" to St. John.

**No. 87. St. John to Digby, Middleton, Lunenburg, 10.95  
Yarmouth, St. John.**

Route: "Prince Rupert" to Digby, D. A. R. to Middleton, C. R. to Lunenburg, Yarmouth S.S. Co. to Yarmouth, D. A. R. to Digby, "Prince Rupert" to St. John.

**No. 88. St. John to Digby, Middleton, Lunenburg, 10.75  
Halifax, Kentville, Digby,  
St. John.**

Route: "Prince Rupert" to Digby, D. A. R. to Middleton, C. R. to Lunenburg, Lunenburg Packet Co. to Halifax, D. A. R. to Digby, "Prince Rupert" to St. John.

For side trip from Kentville to Parrsboro and return, via D. A. R. and Evangeline Navigation Co., add \$1.85.

\*Tours marked thus do not include I. C. R. proportion to or from Springhill Junction. Agents will advise passengers to purchase local tickets between these points.





TOURS FROM ST. JOHN—Continued.

**No. 80. St. John to Digby, Middleton, Bridgewater, Halifax, Digby, St. John. \$9.85**

Route: "Prince Rupert" to Digby, D. A. R. to Middleton, C. R. to Bridgewater, Coastal Steam Packet Co. to Halifax, D. A. R. to Digby, "Prince Rupert" to St. John. For side trip Bridgewater to Liverpool, add \$3.00.

**No. 90. St. John to Digby, Middleton, Bridgewater, Liverpool, Lunenburg, Halifax, St. John. 12.90**

Route: "Prince Rupert" to Digby, D. A. R. to Middleton, C. R. to Bridgewater, Balcom's Stage to Liverpool, Yarmouth S.S. Co. to Lunenburg, Lunenburg Packet Co. to Halifax, D. A. R. to Digby, "Prince Rupert" to St. John.

**\*No. 91. St. John to Digby, Kingsport, Parrsboro, Springhill Junction, Sydney or North Sydney, Halifax, Digby, St. John. 16.65**

Route: "Prince Rupert" to Digby, D. A. R. to Kingsport, Evangeline Navigation Co. to Parrsboro, Cumberland Railway to Springhill Junction, I. C. R. to Sydney or North Sydney, and thence to Halifax, D. A. R. to Digby, "Prince Rupert" to St. John.

**\*No. 92. St. John to Digby, Kingsport, Parrsboro, Springhill Junction, Pictou, Charlottetown, Summerside, Point du Chene, St. John. 13.05**

Route: "Prince Rupert" to Digby, D. A. R. to Kingsport, Evangeline Navigation Co. to Parrsboro, Cumberland Railway to Springhill Junction, I. C. R. to Pictou, Charlottetown Steam Navigation Co. to Charlottetown, Prince Edward Island Railway to Summerside, Charlottetown Steam Navigation Co. to Point du Chene, I. C. R. to St. John.

\*Tours marked thus do not include I. C. R. to or from Springhill Junction. Agents will advise passengers to purchase local tickets between these points.



geline  
ute

age- 99.85

Middle-  
Co. to  
t. John.

age- 12.00

Middle-  
verpool,  
cket Co.  
ert" to

rrs- 16.05  
ey

Kings-  
berland  
ney or  
Digby,

rrs- 13.05  
a,

Kings-  
berland  
Char-  
Prince  
teton  
R. to  
0  
ets be-

éline  
te



TOURS FROM ST. JOHN—Continued.

**\*No. 03. St. John to Digby, Kingsport, Parrsboro, Springhill Junction, Point du Chene, Summerside, Charlottetown, Pictou, Halifax, Digby, St. John.**

Route: "Prince Rupert" to Digby, D. A. R. to Kingsport, Evangeline Navigation Co. to Parrsboro, Cumberland Railway to Springhill Junction, I. C. R. to Point du Chene, Charlottetown Steam Navigation Co. to Summerside, Prince Edward Island Railway to Charlottetown, Charlottetown Steam Navigation Co. to Pictou, I. C. R. to Halifax, D. A. R. to Digby, "Prince Rupert" to St. John.

**\*No. 04. St. John to Digby, Kingsport, Parrsboro, Springhill Junction, Levis, Quebec, Montreal, Levis, Moncton, St. John.**

Route: "Prince Rupert" to Digby, D. A. R. to Kingsport, Evangeline Navigation Co. to Parrsboro, Cumberland Railway to Springhill Junction, I. C. R. to Levis, Ferry to Quebec, C. P. R. to Montreal and return, Ferry to Levis, I. C. R. to St. John, via Moncton.

**\*No. 05. St. John to Digby, Kingsport, Parrsboro, Springhill Junction, Chatham Junction, Fredericton, St. John.**

Route: "Prince Rupert" to Digby, D. A. R. to Kingsport, Evangeline Navigation Co. to Parrsboro, Cumberland Railway to Springhill Junction, I. C. R. to Chatham Junction, Canada Eastern to Fredericton, C. P. R. to St. John.

If Star Line S.S. Co., Fredericton to St. John, deduct \$1.00.

**No. 06. St. John to Digby, Halifax, Levis, Montreal, Boston, Yarmouth, Digby, St. John.**

Route: "Prince Rupert" to Digby, D. A. R. to Halifax, I. C. R. to Levis, Grand Trunk to Montreal, Grand Trunk to St. Johns, Central Vermont to White River Junction, Boston & Maine to Boston, Yarmouth S.S. Co. to Yarmouth, D. A. R. to Digby, "Prince Rupert" to St. John.

\*Tours marked thus do not include I. C. R. proportion to or from Springhill Junction.  
Agents will advise passengers to purchase local tickets between these points.





*TOURS FROM ST. JOHN—Continued.*

**No. 97. St. John to Digby, Halifax, \$37.50  
Newfoundland.**

Route: "Prince Rupert" to Digby, D. A. R. to Halifax, Canada & Newfoundland S.S. Co. to St. John's, Newfoundland (meals and berth included). Return same route.

**No. 98. St. John to Digby, Yarmouth, Boston, 15.50  
St. John.**

Route: "Prince Rupert" to Digby, D. A. R. to Yarmouth, Yarmouth S.S. Co. to Boston, Rail to St. John.

**No. 99. St. John to Digby, Yarmouth, Boston, 29.00  
Montreal, St. John.**

Route: "Prince Rupert" to Digby, D. A. R. to Yarmouth, Yarmouth S.S. Co. to Boston, Boston & Maine to Newport, C. P. R. to Montreal, C. P. R. to St. John.

**No. 100. St. John to Digby, Yarmouth, Boston, 24.50  
New York.**

Route: "Prince Rupert" to Digby, D. A. R. to Yarmouth, Yarmouth S.S. Co. to Boston, Fall River Line to New York, N. Y., N. H. & H. Shore Line to Boston, Rail to St. John.

**No. 101. St. John to Digby, Yarmouth, Boston, 40.55  
New York, Montreal, Quebec, Levis,  
Halifax, Digby, St. John.**

Route: "Prince Rupert" to Digby, D. A. R. to Yarmouth, Yarmouth S.S. Co. to Boston, Fall River Line to New York, New York Central & Hudson River R.R. to Montreal, C. P. R. to Quebec, Ferry to Levis, I. C. R. to Halifax, D. A. R. to Digby, "Prince Rupert" to St. John.

**No. 102. St. John to Digby, Yarmouth, Boston. 12.50**

Route: "Prince Rupert" to Digby, D. A. R. to Yarmouth, Yarmouth S.S. Co. to Boston. Return same route.

**No. 103. St. John to Montreal, Ottawa, Mon- 37.55  
treal, Quebec, Levis, Halifax,  
Digby, St. John.**

Route: C. P. R. to Montreal, C. P. R. to Ottawa, Ottawa River Navigation Co. to Montreal, C. P. R. to Quebec, Ferry to Levis, I. C. R. to Halifax, D. A. R. to Digby, "Prince Rupert" to St. John.



geline  
ute

\$37.50

Halifax,  
wfound-  
te.

on, 15.50

o Yar-  
ohn.

on, 20.00

o Yar-  
aine to  
n.

on, 24.50

o Yar-  
ine to  
n, Rail

on, 40.55

o Yar-  
ine to  
R.R. to  
C. R.  
rt" to

on, 12.50

o Yar-  
same

on- 37.55

Ottawa  
uebec,  
Digby,

eline  
te



*TOURS FROM ST. JOHN—Concluded.*

**No. 104. St. John to Montreal, Quebec, Levis, \$37.80  
Point du Chene, Summerside, Char-  
lottetown, Pictou, Halifax,  
Digby, St. John.**

Route: C. P. R. to Montreal, thence to Quebec, Ferry to  
Levis, I. C. R. to Point du Chene, Charlottetown Naviga-  
tion Co. to Summerside, Prince Edward Island Railway to  
Charlottetown, Charlottetown Steam Navigation Co. to  
Pictou, I. C. R. to Halifax, D. A. R. to Digby, "Prince  
Rupert" to St. John.

**No. 105. St. John to Montreal, Toronto, Niagara 44.20  
Falls, New York, Boston, Yar-  
mouth, Digby, St. John.**

Route: C. P. R. to Montreal, C. P. R. to Toronto, Niagara  
River Line to Niagara Falls, New York Central & Hudson  
River R.R. to New York, Fall River Line to Boston,  
Yarmouth S.S. Co. to Yarmouth, D. A. R. to Digby,  
"Prince Rupert" to St. John.





## TOURS FROM BOSTON.

**No. 100. Boston to Yarmouth, Boston. \$9.00**

Route: Yarmouth S.S. Co. to Yarmouth. Return same route.

**No. 107. Boston to Yarmouth, Digby, Boston. 9.70**

Route: Yarmouth S.S. Co. to Yarmouth, D. A. R. to Digby. Return same route.

**No. 108. Boston to Yarmouth, Annapolis, Boston. 10.70**

Route: Yarmouth S.S. Co. to Yarmouth, D. A. R. to Annapolis. Return same route.

**No. 109. Boston to Yarmouth, Bridgetown, Boston. 11.70**

Route: Yarmouth S.S. Co. to Yarmouth, D. A. R. to Bridgetown. Return same route.

**No. 110. Boston to Yarmouth, Middleton, Boston. 11.90**

Route: Yarmouth S.S. Co. to Yarmouth, D. A. R. to Middleton. Return same route.

Side trip Middleton to Bridgewater, add \$2.50; to Lunenburg, add \$3.20; to Liverpool, add \$2.50.

**No. 111. Boston to Yarmouth, Kentville, Boston. 13.40**

Route: Yarmouth S.S. Co. to Yarmouth, D. A. R. to Kentville. Return same route.

Side trip from Kentville to Canning, add 60 cents; to Kingsport, add 75 cents; to Parrsboro, add \$1.85.



geline  
ute

STON.

\$9.00

rn same

on. 9.20

. R. to

, 10.70

. R. to

n, 11.70

. R. to

, 11.90

. R. to

Lunen-

ston. 13.40

. R. to

o Kings-

geline  
ute



TOURS FROM BOSTON—Continued.

**No. 112. Boston to Yarmouth, Kingsport, Parrsboro. \$15.35**

Route: Yarmouth S.S. Co. to Yarmouth, D. A. R. to Kingsport, Evangeline Navigation Co. to Parrsboro. Return same route.

**No. 113. Boston to Yarmouth, Wolfville, Boston. 14.30**

Route: Yarmouth S.S. Co. to Yarmouth, D. A. R. to Wolfville. Return same route.

**No. 114. Boston to Yarmouth, Windsor, Boston. 15.20**

Route: Yarmouth S.S. Co. to Yarmouth, D. A. R. to Windsor. Return same route.

**No. 115. Boston to Yarmouth, Halifax, Boston. 15.35**

Route: Yarmouth S.S. Co. to Yarmouth, D. A. R. to Halifax. Return same route.

Side trip from Kentville to Canning, add 60 cents; to Kingsport, add 75 cents; to Parrsboro, add \$1.85.

Side trip from Middleton to Bridgewater, add \$2.50; to Lunenburg, add \$3.20; to Liverpool, add \$3.00.

**No. 116. Boston to Yarmouth, Halifax, Boston. 14.50**

Route: Yarmouth S.S. Co. to Yarmouth, D. A. R. to Halifax, C. A. & Plant S.S. Line to Boston.

**No. 117. Boston to Yarmouth, Halifax, Lunenburg, Middleton, Annapolis, Digby, Yarmouth, Boston. 18.25**

Route: Yarmouth S.S. Co. to Yarmouth, D. A. R. to Halifax, Lunenburg Packet Co. to Lunenburg, C. R. to Middleton, D. A. R. to Annapolis, thence to Digby and Yarmouth, Yarmouth S.S. Co. to Boston.

**No. 118. Boston to Yarmouth, Halifax, Bridgewater, Middleton, Annapolis, Digby, Yarmouth, Boston. 16.85**

Route: Yarmouth S.S. Co. to Yarmouth, D. A. R. to Halifax, Coastal Packet Co. to Bridgewater, C. R. to Middleton, D. A. R. to Annapolis, thence to Digby and Yarmouth, Yarmouth S.S. Co. to Boston.







TOURS FROM BOSTON—Continued.

**\*No. 119. Boston to Yarmouth, Kingsport, Parrsboro, Springhill Junction, Halifax, Yarmouth, Boston.** \$17.25

Route: Yarmouth S.S. Co. to Yarmouth, D. A. R. to Kingsport, Evangeline Navigation Co. to Parrsboro, Cumberland Railway to Springhill Junction, I. C. R. to Halifax, D. A. R. to Yarmouth, Yarmouth S.S. Co. to Boston.

**\*No. 120. Boston to Yarmouth, Kingsport, Parrsboro, Springhill Junction, Point du Chene, Summerside, Charlottetown, Pictou, Halifax, Yarmouth, Boston.** 24.50

Route: Yarmouth S.S. Co. to Yarmouth, D. A. R. to Kingsport, Evangeline Navigation Co. to Parrsboro, Cumberland Railway to Springhill Junction, I. C. R. to Point du Chene, Charlottetown Steam Navigation Co. to Summerside, Prince Edward Island Railway to Charlottetown, Charlottetown Steam Navigation Co. to Pictou, I. C. R. to Halifax, D. A. R. to Yarmouth, Yarmouth S.S. Co. to Boston.

For side trip Summerside to Tignish and return, add \$3.10.

For side trip from Charlottetown to Georgetown and return, add \$2.10.

For side trip Charlottetown to Souris and return, add \$2.70.

**\*No. 121. Boston to Yarmouth, Kingsport, Parrsboro, Springhill Junction, Sydney, St. John, Boston.** 27.20

Route: Yarmouth S.S. Co. to Yarmouth, D. A. R. to Kingsport, Evangeline Navigation Co. to Parrsboro, Cumberland Railway to Springhill Junction, I. C. R. to Sydney, I. C. R. to St. John, Rail to Boston.

**\*No. 122. Boston to Yarmouth, Kingsport, Parrsboro, Springhill Junction, St. John, Boston.** 18.25

Route: Yarmouth S.S. Co. to Yarmouth, D. A. R. to Kingsport, Evangeline Navigation Co. to Parrsboro, Cumberland Railway to Springhill Junction, I. C. R. to St. John, Rail to Boston.

\*Tours marked thus do not include I. C. R. proportion to or from Springhill Junction. Agents will advise passengers to purchase local tickets between these points.



geline  
oute

arrs- \$17.35  
ax,

. R. to  
o, Cum-  
Halifax,  
oston.

arrs- 24.50  
du

. R. to  
o, Cum-  
to Point  
to Sum-  
tsetown,  
I. C. R.  
S. Co. to

\$3.10.  
l return,  
d \$2.70.

arrs- 27.20  
ey,

. R. to  
o, Cum-  
to Syd-

arrs- 16.25  
hn,

. R. to  
o, Cum-  
R. to St.

ortion to  
kets be-

geline  
oute



TOURS FROM BOSTON—Continued.

**\*No. 123. Boston to Yarmouth, Kingsport, Parrs- \$21.80  
boro, Springhill Junction, Levis,  
Quebec, Montreal, Boston.**

Route: Yarmouth S.S. Co. to Yarmouth, D. A. R. to Kingsport, Evangeline Navigation Co. to Parrsboro, Cumberland Railway to Springhill Junction, I. C. R. to Levis, Ferry to Quebec, C. P. R. to Montreal, C. P. R. to Newport, Boston & Maine to Boston.

**\*No. 124. Boston to Yarmouth, Kingsport, Parrs- 36.75  
boro, Springhill Junction, Levis,  
Montreal, Toronto, Niagara  
Falls, New York, Boston.**

Route: Yarmouth S.S. Co. to Yarmouth, D. A. R. to Kingsport, Evangeline Navigation Co. to Parrsboro, Cumberland Railway to Springhill Junction, I. C. R. to Levis, G. T. R. to Montreal, thence to Toronto and Niagara Falls, New York Central & Hudson River R.R. to New York, Fall River Line to Boston.

**\*No. 125. Boston to Yarmouth, Kingsport, Parrs- 36.80  
boro, Springhill Junction, Levis, Que-  
bec, Montreal, Toronto, Niagara  
Falls, New York, Boston.**

Route: Yarmouth S.S. Co. to Yarmouth, D. A. R. to Kingsport, Evangeline Navigation Co. to Parrsboro, Cumberland Railway to Springhill Junction, I. C. R. to Levis, Ferry to Quebec, C. P. R. to Montreal, thence to Toronto, Niagara Navigation Co. to Niagara Falls, New York Central & Hudson River R.R. to New York, Fall River Line to Boston

**No. 126. Boston to Yarmouth, Digby, St. John. 12.50**

Route: Yarmouth S.S. Co. to Yarmouth, D. A. R. to Digby, "Prince Rupert" to St. John. Return same route.

\*Tours marked thus do not include I. C. R. proportion to or from Springhill Junction.  
Agents will advise passengers to purchase local tickets between these points.





*TOUR FROM BOSTON—Continued.*

**No. 127. Boston to Yarmouth, Digby, St. John, \$16.85  
St. Andrews.**

Route: Yarmouth S.S. Co. to Yarmouth, D. A. R. to Digby, "Prince Rupert" to St. John, C. P. R. to St. Andrews. Return same route.

**No. 128. Boston to Yarmouth, Digby, St. John, 10.50  
St. Stephen.**

Route: Yarmouth S.S. Co. to Yarmouth, D. A. R. to Digby, "Prince Rupert" to St. John, C. P. R. to St. Stephen. Return same route.

**No. 129. Boston to Yarmouth, Digby, St. John, 19.15  
Woodstock.**

Route: Yarmouth S.S. Co. to Yarmouth, D. A. R. to Digby, "Prince Rupert" to St. John, C. P. R. to Woodstock. Return same route.

If via Star Line one way between St. John and Woodstock, deduct \$1.60.

**No. 130. Boston to Yarmouth, Digby, St. John, 15.50  
Fredericton.**

Route: Yarmouth S.S. Co. to Yarmouth, D. A. R. to Digby, "Prince Rupert" to St. John, C. P. R. to Fredericton. Return same route.

If via Star Line, St. John to Fredericton and return, deduct \$1.25.

**No. 131. Boston to Yarmouth, Digby, St. John, 33.50  
Montreal.**

Route: Yarmouth S.S. Co. to Yarmouth, D. A. R. to Digby, "Prince Rupert" to St. John, C. P. R. to Montreal. Return same route.

**No. 132. Boston to Yarmouth, Digby, St. John, 38.50  
Ottawa.**

Route: Yarmouth S.S. Co. to Yarmouth, D. A. R. to Digby, "Prince Rupert" to St. John, C. P. R. to Ottawa. Return same route.



geline  
ute

hn, \$16.85

R. to  
to St

hn, 16.50

R. to  
to St.

hn, 19.15

R. to  
R. to

stock,

hn, 15.50

R. to  
to Fred-

educt

hn, 33.50

R. to  
to Mon-

hn, 38.50

R. to  
Ottawa.

geline  
ute



TOURS FROM BOSTON—Continued.

**No. 133. Boston to Yarmouth, Digby, St. John, \$38.50  
Quebec.**

Route: Yarmouth S.S. Co. to Yarmouth, D. A. R. to Digby, "Prince Rupert" to St. John, C. P. R. to Quebec. Return same route.

**No. 134. Boston to Yarmouth, Digby, St. John, 15.50  
Boston.**

Route: Yarmouth S.S. Co. to Yarmouth, D. A. R. to Digby, "Prince Rupert" to St. John, Rail to Boston.

**No. 135. Boston to Yarmouth, Digby, St. John, 42.55  
Montreal, Quebec, Levis, Halifax,  
Yarmouth, Boston.**

Route: Yarmouth S.S. Co. to Yarmouth, D. A. R. to Digby, "Prince Rupert" to St. John, C. P. R. to Montreal, C. P. R. to Quebec, Ferry to Levis, I. C. R. to Halifax, D. A. R. to Yarmouth, Yarmouth S.S. Co. to Boston.

**No. 136. Boston to Yarmouth, Digby, St. John, 43.25  
Montreal, Quebec, Pictou, Halifax,  
Boston.**

Route: Yarmouth S.S. Co. to Yarmouth, D. A. R. to Digby, "Prince Rupert" to St. John, C. P. R. to Montreal, Quebec S.S. Co. to Pictou, I. C. R. to Halifax, D. A. R. to Yarmouth, Yarmouth S.S. Co. to Boston.

For side trip from Quebec to Roberval and return, via Quebec & Lake St. John Railway, add \$7.50.

For side trip from Quebec to Chicoutimi, and thence down the Saguenay River to Quebec, via Quebec & Lake St. John Railway, and Richelieu & Ontario Navigation Co., add \$10.00.

**No. 137. Boston to Yarmouth, Digby, St. John, 46.00  
Montreal, Summerside, Charlotte-  
town, Pictou, Halifax, Yar-  
mouth, Boston.**

Route: Yarmouth S.S. Co. to Yarmouth, D. A. R. to Digby, "Prince Rupert" to St. John, C. P. R. to Montreal, Quebec S.S. Co. to Summerside, Prince Edward Island Railway to Charlottetown, Charlottetown Navigation Co. to Pictou, I. C. R. to Halifax, D. A. R. to Yarmouth, Yarmouth S.S. Co. to Boston.





*TOURS FROM BOSTON—Continued.*

**No. 138. Boston to Yarmouth, Digby, St. John, \$38.25  
Montreal, Quebec, Levis, Moncton,  
St. John, Digby, Yarmouth, Boston.**

Route: Yarmouth S.S. Co. to Yarmouth, D. A. R. to Digby, "Prince Rupert" to St. John, C. P. R. to Montreal, C. P. R. to Quebec, Ferry to Levis, I. C. R. to St. John, via Moncton, "Prince Rupert" to Digby, D. A. R. to Yarmouth, Yarmouth S.S. Co. to Boston.

**No. 139. Boston to Yarmouth, Digby, St. John, 29.00  
Levis, Montreal, Boston.**

Route: Yarmouth S.S. Co. to Yarmouth, D. A. R. to Digby, "Prince Rupert" to St. John, I. C. R. to Levis, G. T. R. to Montreal, G. T. R. to St. Johns, Central Vermont to White River Junction, Boston & Maine to Boston.

**No. 140. Boston to Yarmouth, Digby, St. John, 29.00  
Montreal, Boston.**

Route: Yarmouth S.S. Co. to Yarmouth, D. A. R. to Digby, "Prince Rupert" to St. John, C. P. R. to Montreal, C. P. R. to Newport, Boston & Maine to Boston.

For side trip from Montreal to Ottawa and return, via Ottawa River Navigation Co., add \$4.00; via C. A. Railway, add \$5.00.

**No. 141. Boston to Yarmouth, Halifax, St. John, Digby, Yarmouth, Boston. 19.00**

Route: Yarmouth S.S. Co. to Yarmouth, D. A. R. to Halifax, I. C. R. to St. John, "Prince Rupert" to Digby, D. A. R. to Yarmouth, Yarmouth S.S. Co. to Boston.

If stop-over on I. C. R., add 50 cents.

**No. 142. Boston to Yarmouth, Halifax, Pictou, 24.75  
Charlottetown, Summerside, Point  
du Chene, St. John, Digby,  
Yarmouth, Boston.**

Route: Yarmouth S.S. Co. to Yarmouth, D. A. R. to Halifax, I. C. R. to Pictou, Charlottetown Steam Navigation Co. to Charlottetown, Prince Edward Island Railway to Summerside, Charlottetown Steam Navigation Co. to Point du Chene, I. C. R. to St. John, "Prince Rupert" to Digby, D. A. R. to Yarmouth, Yarmouth S.S. Co. to Boston.



eline  
nte

hn, \$38.25

R. to  
Mon-  
R. to  
D. A.

hn, 29.00

R. to  
Levis,  
Central  
aine to

hn, 20.00

R. to  
Mon-  
ston.

n, via  
Rail-

10.00

R. to  
Digby,  
on.

ou, 24.75  
nt

R. to  
Navi-  
gation  
Co. to  
upert"  
Co. to

eline  
nte



TOURS FROM BOSTON—Continued.

**No. 143. Boston to Yarmouth, Halifax, Mulgrave, Sydney, Pictou, St. John, Boston. \$33.05**

Route: Yarmouth S.S. Co. to Yarmouth, D. A. R. to Halifax, I. C. R. to Mulgrave, Bras d'Or Steam Navigation Co. Mulgrave to Sydney and return, I. C. R. to St. John, via Pictou and Short Line, Rail to Boston.

**No. 144. Boston to Yarmouth, Halifax, Levis, Quebec, Toronto, Niagara Falls, New York, Boston. 47.55**

Route: Yarmouth S.S. Co. to Yarmouth, D. A. R. to Halifax, I. C. R. to Levis, Ferry to Quebec, C. P. R. to Toronto, Niagara River Line to Niagara Falls, New York Central & Hudson River R.R. to New York, Fall River Line to Boston.

If N. Y., N. H. & H. Shore Line, New York to Boston, add \$1.00.

**No. 145. Boston to Yarmouth, Halifax, Riviere du Loup, Edmundston, St. John, Digby, Yarmouth, Boston. 35.45**

Route: Yarmouth S.S. Co. to Yarmouth, D. A. R. to Halifax, I. C. R. to Riviere du Loup, Temiscouata Railway to Edmundston, C. P. R. to St. John, via Fredericton, "Prince Rupert" to Digby, D. A. R. to Yarmouth, Yarmouth S.S. Co. to Boston.

If via McAdam Junction, add 20 cents.

For side trips from Riviere du Loup to Saguenay and return, via the Richelieu & Ontario Navigation Co., add \$5.00.

**No. 146. Boston to Yarmouth, Halifax, Chatham Junction, Fredericton, St. John, Boston. 26.95**

Route: Yarmouth S.S. Co. to Yarmouth, D. A. R. to Halifax, I. C. R. to Chatham Junction, Canada Eastern to Fredericton, C. P. R. to St. John, Rail to Boston.

If return via Digby and Yarmouth from St. John, deduct \$1.50.





TOURS FROM BOSTON—Concluded.

**No. 147. Boston to Yarmouth, Halifax, Pictou, \$25.05  
Margaree, C.B.**

Route: Yarmouth S.S. Co. to Yarmouth, D. A. R. to  
Halifax, I. C. R. to Pictou, S.S. St. Olaf to Margaree.  
Return same route.

**No. 148. Boston to Yarmouth, Halifax, Pictou, 27.45  
Magdalen Islands.**

Route: Yarmouth S.S. Co. to Yarmouth, D. A. R. to  
Halifax, I. C. R. to Pictou, S.S. St. Olaf to Magdalen  
Islands, calling at Georgetown and Souris, Prince Edward  
Island. Return same route.

The foregoing Tours can be extended, and other Tours  
made up as desired, on Telegraphic Application  
by Ticket Agents to

**P. GIFKINS,**

General Passenger Agent,

KENTVILLE, N.S.

CITY AGENTS:

J. F. MASTERS	228 Washington Street, BOSTON
A. D. HEWAT	126 Hollis Street, HALIFAX
G. STERLING	114 Prince William Street, ST. JOHN, N.B.
H. T. PHINNEY, Ticket Agent	KENTVILLE STATION
THOS. COOK & SON	261 Broadway, NEW YORK
HENRY GAZE & SONS	113 Broadway, NEW YORK

*And at Cook's and Gaze's Agencies in the States and Canada.*



# Maritime Express Company



## VIA "EVANGELINE ROUTE"

WITH OFFICES AT

**HALIFAX, LUNENBURG, PARRSBORO,  
YARMOUTH, ST. JOHN, BOSTON**

And at all Intermediate Stations on the Lines of the  
**DOMINION ATLANTIC AND CENTRAL RAILWAYS.**

Express matter is carried by Fast Passenger Trains and under the charge of Special Messengers.

Express Cars are furnished with Fire and Burglar-proof Safes for the Carriage of Money Packages, Bonds and other Valuables.

**SPECIAL ATTENTION GIVEN TO C. O. D. CONSIGNMENTS.**

 **FREE DELIVERY SERVICES** in the Cities and Principal Towns.

Shippers from BOSTON to points in NOVA SCOTIA and NEW BRUNSWICK will find our rates very low and our despatch exceedingly prompt.

Connections are made at HALIFAX, WINDSOR JUNCTION, ST. JOHN and BOSTON, with the leading reliable Express Companies of Canada and the United States.

The MARITIME EXPRESS COMPANY does for its Customers everything that perfect organization and rapid despatch can accomplish.

*For information as to rates, etc., apply to*

A. D. HEWAT, 126 Hollis Street, Halifax, N.S.; GEO. STERLING, 114 Prince William Street, St. John, N.B.; F. G. J. COMEAU, Yarmouth, N.S.; J. F. MASTERS, 228 Washington Street, Boston; or to any Station Agent of the DOMINION ATLANTIC AND CENTRAL RAILWAYS.

**Chief Office: 126 HOLLIS STREET, HALIFAX, N.S.**

**A. D. HEWAT,**  
*Assistant Manager.*

**WILLIAM FRASER,**  
*Manager and Treasurer.*

Evangeline  
Route

etou, \$25.65

A. R. to  
Margaree.

etou, \$27.45

A. R. to  
Magdalen  
Edward

Other Tours  
Application

er Agent,  
VILLE, N.S.

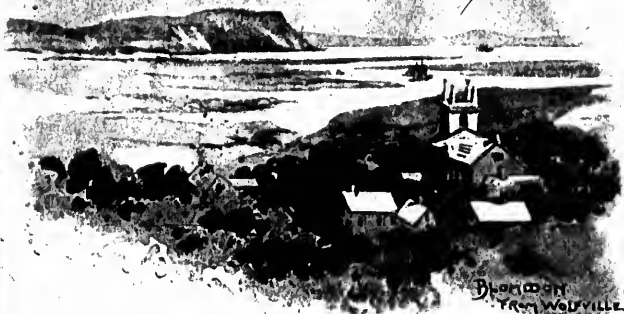
Street, BOSTON  
reet, HALIFAX  
T. JOHN, N.B.  
LLE STATION  
y, NEW YORK  
y, NEW YORK  
and Canada.

Evangeline  
Route

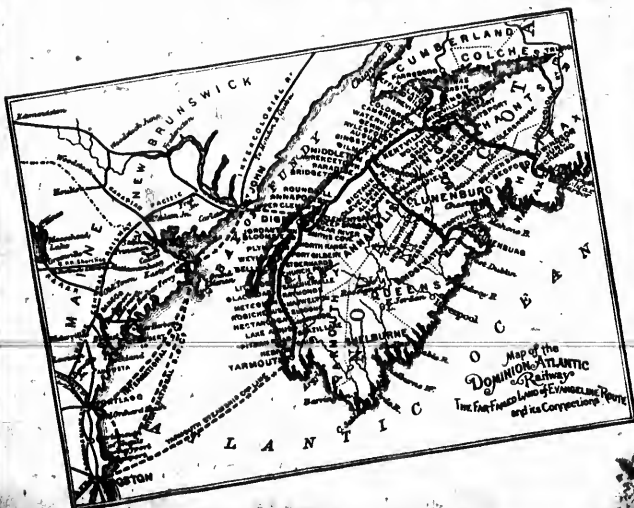
50



# HOLIDAY TOURS THROUGH EVANGELINE'S LAND



Blomidon  
from Wolfville



IRS  
GH

WES



BLOOMINGTON  
FROM WOLFVILLE







