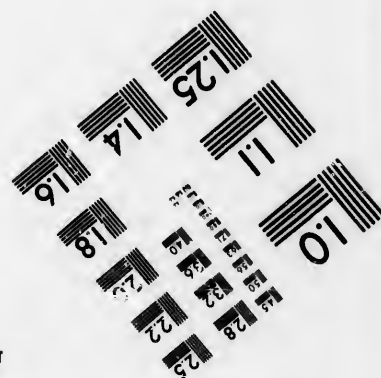
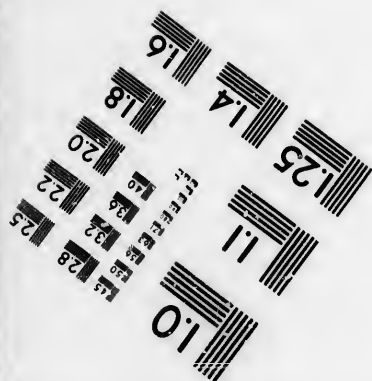
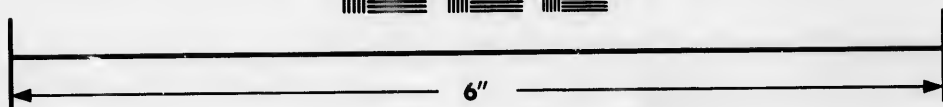
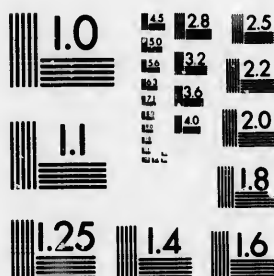


# IMAGE EVALUATION TEST TARGET (MT-3)



Photographic  
Sciences  
Corporation

23 WEST MAIN STREET  
WEBSTER, N.Y. 14580  
(716) 872-4503

**CIHM/ICMH  
Microfiche  
Series.**

**CIHM/ICMH  
Collection de  
microfiches.**



**Canadian Institute for Historical Microreproductions / Institut canadien de microreproductions historiques**

**© 1986**

# Technical and Bibliographic Notes/Notes techniques et bibliographiques

The Institute has attempted to obtain the best original copy available for filming. Features of this copy which may be bibliographically unique, which may alter any of the images in the reproduction, or which may significantly change the usual method of filming, are checked below.

- ☐ Coloured covers/  
Couverture de couleur
- ☐ Covers damaged/  
Couverture endommagée
- ☐ Covers restored and/or laminated/  
Couverture restaurée et/ou pelliculée
- ☐ Cover title missing/  
Le titre de couverture manque
- ☐ Coloured maps/  
Cartes géographiques en couleur
- ☐ Coloured ink (i.e. other than blue or black)/  
Encre de couleur (i.e. autre que bleue ou noire)
- ☐ Coloured plates and/or illustrations/  
Planches et/ou illustrations en couleur
- ☐ Bound with other material/  
Relié avec d'autres documents
- ☐ Tight binding may cause shadows or distortion along interior margin/  
La reliure serrée peut causer de l'ombre ou de la distorsion le long de la marge intérieure
- ☐ Blank leaves added during restoration may appear within the text. Whenever possible, these have been omitted from filming/  
Il se peut que certaines pages blanches ajoutées lors d'une restauration apparaissent dans le texte, mais, lorsque cela était possible, ces pages n'ont pas été filmées.

☒ Additional comments:  
Commentaires supplémentaires:

[Printed ephemera] 1 sheet (verso blank) This copy is a photoreproduction.

L'Institut a microfilmé la meilleure exemplaire qu'il lui a été possible de se procurer. Les détails de cet exemplaire qui sont peut-être uniques du point de vue bibliographique, qui peuvent modifier une image reproduite, ou qui peuvent exiger une modification dans la méthode normale de filmage sont indiqués ci-dessous.

- ☐ Coloured pages/  
Pages de couleur
- ☐ Pages damaged/  
Pages endommagées
- ☐ Pages restored and/or laminated/  
Pages restaurées et/ou pelliculées
- ☐ Pages discoloured, stained or foxed/  
Pages décolorées, tachetées ou piquées
- ☐ Pages detached/  
Pages détachées
- ☐ Showthrough/  
Transparence
- ☐ Quality of print varies/  
Qualité inégale de l'impression
- ☐ Includes supplementary material/  
Comprend du matériel supplémentaire
- ☐ Only edition available/  
Seule édition disponible
- ☐ Pages wholly or partially obscured by errata slips, tissues, etc., have been refilmed to ensure the best possible image/  
Les pages totalement ou partiellement obscurcies par un feuillet d'errata, une pelure, etc., ont été filmées à nouveau de façon à obtenir la meilleure image possible.

This item is filmed at the reduction ratio checked below/  
Ce document est filmé au taux de réduction indiqué ci-dessous.

10X	12X	14X	16X	18X	20X	22X	24X	25X	28X	30X	32X
							✓				

The copy filmed here has been reproduced thanks to the generosity of:

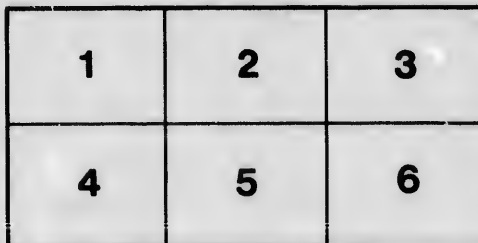
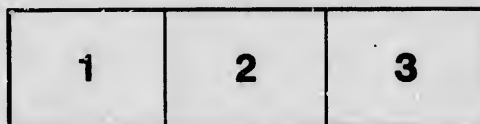
Bibliothèque nationale du Québec

The images appearing here are the best quality possible considering the condition and legibility of the original copy and in keeping with the filming contract specifications.

Original copies in printed paper covers are filmed beginning with the front cover and ending on the last page with a printed or illustrated impression, or the back cover when appropriate. All other original copies are filmed beginning on the first page with a printed or illustrated impression, and ending on the last page with a printed or illustrated impression.

The last recorded frame on each microfiche sheet contains the symbol  $\rightarrow$  (meaning "CONTINUED"), or the symbol  $\nabla$  (meaning "END"), whichever applies.

Maps, plates, charts, etc., may be filmed at different reduction ratios. Those too large to be entirely included in one exposure are filmed beginning in the upper left hand corner, left to right and top to bottom, as many frames as required. The following diagrams illustrate the method:



L'exemplaire filmé fut reproduit grâce à la générosité de:

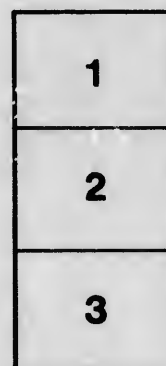
Bibliothèque nationale du Québec

Les images suivantes ont été reproduites avec le plus grand soin, compte tenu de la condition et de la netteté de l'exemplaire filmé, et en conformité avec les conditions du contrat de filmage.

Les exemplaires originaux dont la couverture en papier est imprimée sont filmés en commençant par le premier plat et en terminant soit par la dernière page qui comporte une empreinte d'impression ou d'illustration, soit par le second plat, selon le cas. Tous les autres exemplaires originaux sont filmés en commençant par la première page qui comporte une empreinte d'impression ou d'illustration et en terminant par la dernière page qui comporte une telle empreinte.

Un des symboles suivants apparaît sur la dernière image de chaque microfiche, selon le cas: le symbole  $\rightarrow$  signifie "A SUIVRE", le symbole  $\nabla$  signifie "FIN".

Les cartes, planches, tableaux, etc., peuvent être filmés à des taux de réduction différents. Lorsque le document est trop grand pour être reproduit en un seul cliché, il est filmé à partir de l'angle supérieur gauche, de gauche à droite, et de haut en bas, en prenant le nombre d'images nécessaire. Les diagrammes suivants illustrent la méthode.





## HEAD QUARTERS, QUEBEC,

*Adj. Genls. Office, 13th Feby. 1814.*

### GENERAL ORDER.

**H**IS EXCELLENCY THE GOVERNOR IN CHIEF and Commander of the Forces, has received the Report of Lieut Colonel Morrison, 89th Regt. to Lieut. Gen. Drummond, announcing the complete success of an enterprize which he had sanctioned, in consequence of having received information that the property belonging to British Merchants, captured by the Enemy near Cornwall, in October last, and which had been stipulated to be returned by a Capitulation, entered into on the 10th November following, by Judge Ogden and Mr. Richards on the part of the United States, and Lieut. Col. Morrison and Capt. Mulcaster, Royal Navy, on the part of the British Government, had not only been with held contrary to the faith of that Treaty, but had been removed to Madrid, on the Grass River, and was publicly advertised for sale, on Thursday, for the benefit of the American Government.

Lieut. Col. Morrison availed himself of a plan submitted by Capt. Sherwood of the Quarter Master General's Department, for the recovery of this British plundered property, and placed for that purpose under his command a detachment of a Subaltern Officer, two Serjeants and twenty rank and file of the Royal Marines, together with ten Soldiers of the Incorporated Militia of Prescott, under Capt. Ker. Captain Sherwood reports, that he crossed his small party to the Enemy's Shore, on the night of the 6th inst. and marched through the village of Hamilton after midnight, and having taken necessary precautions, proceeded fourteen miles to the interior on the Grass River, where the Plunder was deposited; and having on his route impressed all the Sleighs and Horses he could find, he immediately took possession of the Property, which was left in the custody of the Collector, Richards' Son, who was secured, but afterwards released. The Sleighs being loaded at half past four, Captain Sherwood returned, and again passed through the village of Hamilton, of which not a single House was entered, nor did any individual suffer the slightest loss or insult in person or property; that officer having previously avowed the sole object of the expedition, and engaged that no molestation would be experienced by the inhabitants, if no opposition was offered on their part.—And so scrupulous has that officer been, in the observance of the strict injunctions he received from Lieut. Colonel Morrison to adhere to the spirit of forbearance prescribed by His Excellency in his Proclamation of the 12th January, that not being provided with sufficient means to remove the whole of the Property, Captain Sherwood left about twenty Sleigh loads of articles of minor value, and would not suffer the building that contained them to be set on fire, lest any private property should in consequence be destroyed.

The party returned at 2 o'clock in the afternoon, where their Boats awaited them, under the orders of Lieut. Sheaver, of the Dundas Militia. A few of the enemy's militia began to collect in the vicinity, but were soon dispersed by the detachment of Royal Marines, and did not again make their appearance. The whole of the party and Stores crossed over to Cornwall, without having experienced any loss or casualty.

His Excellency the Governor in Chief and Commander of the Forces, highly approves of the plan and conduct of this enterprize, as well for the judgment evinced in its arrangement, as for the promptness and spirit displayed in its execution, and most particularly for the extreme good order and regularity preserved, which reflects the highest credit on the discipline of the Troops, and on the skill and conduct of Capt. Sherwood.

EDWARD BAYNES,

Adjutant-General, N. A.

