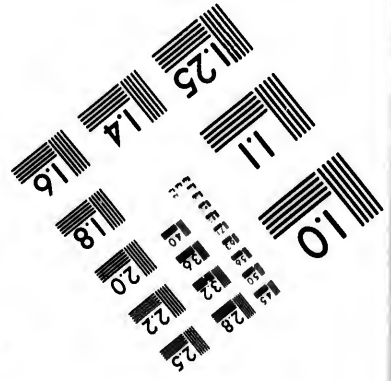
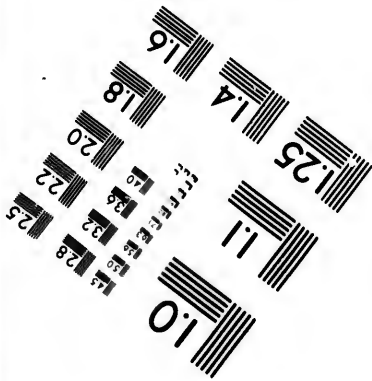
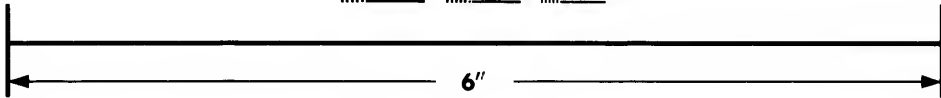
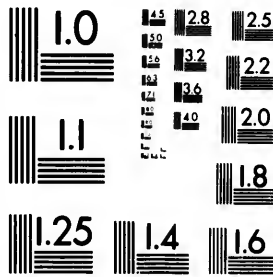


**IMAGE EVALUATION
TEST TARGET (MT-3)**



**Photographic
Sciences
Corporation**

23 WEST MAIN STREET
WEBSTER, N.Y. 14580
(716) 872-4503

14 28
32 25
22
20
8

**CIHM/ICMH
Microfiche
Series.**

**CIHM/ICMH
Collection de
microfiches.**



Canadian Institute for Historical Microreproductions / Institut canadien de microreproductions historiques

10

© 1983

Technical and Bibliographic Notes/Notes techniques et bibliographiques

The Institute has attempted to obtain the best original copy available for filming. Features of this copy which may be bibliographically unique, which may alter any of the images in the reproduction, or which may significantly change the usual method of filming, are checked below.

L'Institut a microfilmé le meilleur exemplaire qu'il lui a été possible de se procurer. Les détails de cet exemplaire qui sont peut-être uniques du point de vue bibliographique, qui peuvent modifier une image reproduite, ou qui peuvent exiger une modification dans la méthode normale de filmage sont indiqués ci-dessous.

- Coloured covers/
Couverture de couleur
- Covers damaged/
Couverture endommagée
- Covers restored and/or laminated/
Couverture restaurée et/ou pelliculée
- Cover title missing/
Le titre de couverture manque
- Coloured maps/
Cartes géographiques en couleur
- Coloured ink (i.e. other than blue or black)/
Encre de couleur (i.e. autre que bleue ou noire)
- Coloured plates and/or illustrations/
Planches et/ou illustrations en couleur
- Bound with other material/
Relié avec d'autres documents
- Tight binding may cause shadows or distortion along interior margin/
La reliure serrée peut causer de l'ombre ou de la distortion le long de la marge intérieure
- Blank leaves added during restoration may appear within the text. Whenever possible, these have been omitted from filming/
Il se peut que certaines pages blanches ajoutées lors d'une restauration apparaissent dans le texte, mais, lorsque cela était possible, ces pages n'ont pas été filmées.
- Additional comments:/
Commentaires supplémentaires:

- Coloured pages/
Pages de couleur
- Pages damaged/
Pages endommagées
- Pages restored and/or laminated/
Pages restaurées et/ou pelliculées
- Pages discoloured, stained or foxed/
Pages décolorées, tachetées ou piquées
- Pages detached/
Pages détachées
- Showthrough/
Transparence
- Quality of print varies/
Qualité inégale de l'impression
- Includes supplementary material/
Comprend du matériel supplémentaire
- Only edition available/
Seule édition disponible
- Pages wholly or partially obscured by errata slips, tissues, etc., have been refilmed to ensure the best possible image/
Les pages totalement ou partiellement obscurcies par un feuillet d'errata, une pelure, etc., ont été filmées à nouveau de façon à obtenir la meilleure image possible.

This item is filmed at the reduction ratio checked below/
Ce document est filmé au taux de réduction indiqué ci-dessous.

10X	12X	14X	16X	18X	20X	22X	24X	26X	28X	30X	32X
						✓					

The copy filmed here has been reproduced thanks to the generosity of:

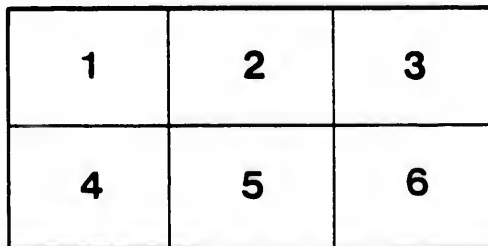
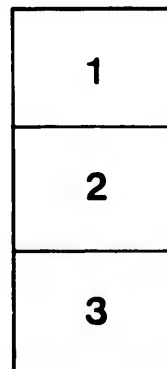
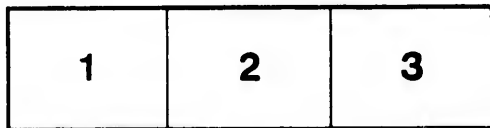
Glenbow-Alberta Institute
Calgary

The images appearing here are the best quality possible considering the condition and legibility of the original copy and in keeping with the filming contract specifications.

Original copies in printed paper covers are filmed beginning with the front cover and ending on the last page with a printed or illustrated impression, or the back cover when appropriate. All other original copies are filmed beginning on the first page with a printed or illustrated impression, and ending on the last page with a printed or illustrated impression.

The last recorded frame on each microfiche shall contain the symbol \rightarrow (meaning "CONTINUED"), or the symbol ∇ (meaning "END"), whichever applies.

Maps, plates, charts, etc., may be filmed at different reduction ratios. Those too large to be entirely included in one exposure are filmed beginning in the upper left hand corner, left to right and top to bottom, as many frames as required. The following diagrams illustrate the method:



L'exemplaire filmé fut reproduit grâce à la générosité de:

Glenbow-Alberta Institute
Calgary

Les images suivantes ont été reproduites avec le plus grand soin, compte tenu de la condition et de la netteté de l'exemplaire filmé, et en conformité avec les conditions du contrat de filmage.

Les exemplaires originaux dont la couverture en papier est imprimée sont filmés en commençant par le premier plat et en terminant soit par la dernière page qui comporte une empreinte d'impression ou d'illustration, soit par le second plat, selon le cas. Tous les autres exemplaires originaux sont filmés en commençant par la première page qui comporte une empreinte d'impression ou d'illustration et en terminant par la dernière page qui comporte une telle empreinte.

Un des symboles suivants apparaîtra sur la dernière image de chaque microfiche, selon le cas: le symbole \rightarrow signifie "A SUIVRE", le symbole ∇ signifie "FIN".

Les cartes, planches, tableaux, etc., peuvent être filmés à des taux de réduction différents. Lorsque le document est trop grand pour être reproduit en un seul cliché, il est filmé à partir de l'angle supérieur gauche, de gauche à droite, et de haut en bas, en prenant le nombre d'images nécessaire. Les diagrammes suivants illustrent la méthode.

ils
u
diffier
ne
page

ata

lure,
à

2X

FOLDER A

CORRECTED TO JULY 2ND, 1889



D. McNICOLL,
General Passenger Agent,
Montreal.

ROBT. KERR,
General Passenger Agent,
West. & Pac. Divs., Winnip.

CANADIAN PACIFIC RAILWAY

GENERAL OFFICERS HEAD OFFICES: MONTREAL, CANADA

W. C. VAN HORNE	President	Montreal.
CHARLES DRINKWATER	Secretary	"
T. G. SHAUGHNESSY	Assistant General Manager	"
GEORGE OLDS	General Traffic Manager	"
HENRY BEATTY	Manager Steamship Lines and Lake Traffic	Toronto.
I. G. OGDEN	Comptroller	Montreal.
D. McNICOLL	General Passenger Agent	"
C. E. L. USSHER	Asst. General Passenger Agent	"
W. SUTHERLAND TAYLOR	Treasurer	"
L. A. HAMILTON	Land Commissioner	Winnipeg.
T. A. MACKINNON	Gen. Superintendent, Ontario & Atlantic Div.	Montreal.
C. W. SPENCER	Gen. Superintendent, Eastern Div.	"
WM. WHYTE	General Superintendent, Western Division	Winnipeg.
HARRY ABBOTT	General Superintendent, Pacific Division	Vancouver.
ROBERT KERR	Gen. Freight and Pass. Agt., W. and P. Divs.	Winnipeg.
D. E. BROWN	Asst. Gen. Freight and Pass. Agt., W. and P. Divisions	Vancouver.
G. M. BOSWORTH	Asst. Frt. Traffic Man., Ontario & Atlantic and Eastern Divisions	Toronto.
J. N. SUTHERLAND	General Freight Agent	"
A. C. HENRY	Purchasing Agent	Montreal.
J. A. SHEPHERD	Supt. Sleeping, Dining and Parlor Cars	"
E. S. ANDERSON	General Baggage Agent	"

AGENCIES

Adelphi	Ans. Agenc.	Atlantic S.S. Co.
Baltimore	Md.	H. M. Martin, Freight and Passenger Agent, 265 East German St.
Boston	Mass.	H. J. Collins, District Passenger Agent, 211 Washington St.
Brockton	Mass.	J. J. McLaughlin, Ticket Agent, 145 Main St.
Buffalo	N. Y.	Walter Hurd, Ticket Agent, 15 Exchange St.
Chicago	Ill.	J. Francis Lee, Commercial Agent, 232 South Clark St.
Chicago	Ill.	Archer Baker, European Traffic Agent, 293 South W. St.
Hull	N. C.	R. Barry, Ticket Agent, 129 Hollis St.
Hamilton	Ont.	J. W. Grant, Ticket Agent, 8 James St. south.
Hogo	Japan	Messrs. Frazar & Co.
Hong Kong	China	Messrs. Anderson, Bell & Co., Agents for China.
Liverpool	Eng.	Archer Baker, European Traffic Agent, 7 James St.
London	Eng.	8 Cannon St.
London	Ont.	T. R. Parker, Ticket Agent, 1 Masonic Temple.
Montreal	Que.	Wm. I. Egg, District Passenger Agent, 124 Water Street. A. B. Chaffee, Jr., City Passenger Agent, 206 St. James St.
New York	N. Y.	F. V. Skinner, General Eastern Agent, 353 Broadway. J. C. Schreiber, Land and Immigration Agent, 20 State Street. Everett Frazar, China and Japan Agent, Prospect House.
Niagara Falls	N. Y.	D. Isaacs, Agent, Prospect House.
Niagara Falls	Ont.	J. E. Parker, City Passenger Agent, Clifton House.
Ottawa	Ont.	J. E. Parker, City Passenger Agent, 42 Sparks St.
Old Orchard Beach	Me.	W. I. Lemell, B. & O. Ticket Agent, Cor. Third and Chestnut Streets.
Philadelphia	Pa.	H. McMorris, Freight and Pass. Agent, Cor. Third and Chestnut Streets.
Portland	Me.	M. I. Whelan, Men. Traffic Agent, 124 Water Street.
Portland	Oron.	C. G. McCord, Freight and Passenger Agent, 6 Washington St.
Pt. Townsend	W. T.	James G. McNeil, Ticket Agent, 118 King St. W.
Quebec	Que.	J. W. Ryder, City Passenger Agent, St. Louis Hotel.
St. Marie	Mich.	T. P. Harvey, Ticket Agent, 37 Ashmun St.
St. John	N. B.	M. Srs. Chisholm & Co., Ticket Agents, Chubb's Corner.
San Francisco	Cal.	Messrs. Goodhall, Perkins & Co., Agts. Pac. Coast, 10 Market St. J. B. Jackson, Passenger Agent, 214 Montgomery St. H. M. Stern, Passenger Agent, 208
Seattle	Wash. Ter.	E. W. MacGinnis, Ticket Agent, 100 Third St.
Shanghai	China	Messrs. Anderson, Bell & Co., Agents for China.
Sherbrooke	Que.	John Murray, Ticket Agent, 6 Commercial St.
Sydney	Australia	Agent Ocean Steamship Company.
Tacoma	Wash. Ter.	E. E. Ellis, Freight and Passenger Agent, 118 King St. W.
Toronto	Ont.	W. R. Callaway, District Passenger Agent, 118 King St. W.
Vancouver	B. C.	G. McI. Brown, Ticket Agent, Government St.
Victoria	B. C.	Robt. Irving, Freight and Passenger Agent, Government St.
Winnipeg	Man.	G. H. Campbell, City Ticket Agent, 471 Main St.
Yokohama	Japan	Messrs. Frazar & Co., Agents for Japan.

TRAVELLING AGENTS

J. G. THOMSON	Travelling Passenger Agent	Chicago.
W. F. DUCKHILL	"	Toronto.
M. P. FLEMING	"	"
A. E. LALANDER	"	Montreal.
J. M. KENNA	"	"
J. B. LAMKIN	"	Quebec.
M. M. HILLES	"	Boston.
J. G. KNEELY	"	"
J. W. GREENE	"	New York.
J. W. THURTELL	"	Buffalo.
M. M. KENNEDY	"	St. Paul, Minn.
C. S. PHILIPS	"	St. John, N.B.

CANADIAN PACIFIC RAILWAY

RAILWAY, STEAMSHIP AND STAGE CONNECTIONS

- AUTON**, with Grand Trunk Ry. for Richmond, etc.
- ALGONIA MILLS**, during season of navigation, with Canadian Pacific S.S. "Cannon and" Cambria, for South Sea, Marie and Georgian Bay Ports.
- ALBERTA**, with the Pontiac Pacific, Junction St. 549. See note Algonia Branch.
- ALBERTA**, during season of navigation, with the Richelieu & Ontario Navigation Co., and with ferry for Morrisstown. (a) With the Grand Trunk Ry.
- CALUMET**, during season of navigation, with ferry for 1. Original, Hawkesbury and Van Hook, etc., and Stage in Winter Season.
- CAULFIELD**, with Grand Trunk Ry. (a) for Hamilton, Hagersville, Port Dover, Collingwood, Penetanguishene, Gravelhurst and Muskoka District.
- CENTRAL ONTARIO J.M.C.**, with Cent. Ont. Ry. (a) for Leiston, Picton, etc.
- DELFIELD**, with Grand Trunk Ry. for Paris, Bradford, Stratford, London, etc.
- DESMOND**, with North-West Coal & Navigation Co. (a) for Leithridge, which is adjacent to Fort McLeod.
- EMERSON and GRENA** 45, with St. Paul, Minneapolis & Manitoba Ry. (a) for all points in Dakota, Minnesota and Montana, and for Chicago, Kansas City, etc.
- FALMOUTH**, with Grand Trunk Ry. for Berlin, Hagersville and Bradford.
- GELPH**, with Grand Trunk Ry. for Berlin, Stratford, etc.
- GOLDEN**, with Kootenay Mail Srv. "D. H. HISS" for Whitehorse, Ft. St. John, and other points in B. C. and Yukon Territory, and for Vancouver, Southam, etc.
- HARRISTOWN**, with Grand Trunk Ry. (a) for Hamilton, Hagersville, Port Dover, Collingwood, Penetanguishene, Gravelhurst and Muskoka District.
- LENNONVILLE**, with Boston & Maine R.R. for Ayer's Falls, Stanstead, etc., and with Grand Trunk Ry. for Richmond, etc.
- LEWISVILLE**, with Grand Trunk Ry. for Richmond, London, etc.
- LOUISVILLE**, during summer season, with stage for the farthest St. Leon Springs.
- MILTON**, with Grand Trunk Ry. for Hamilton, Hagersville, Port Dover, etc.
- MONTREAL**, during season of navigation, with the Riv. Nelson & Ontario Navigation Co. for Quebec, and with the Riv. St. Lawrence for Roules Point, where connection is made with the Delaware & Hudson Rys. for New York, Philadelphia, etc.; during season of navigation, with Steamers of the Black Diamond Line for St. Lawrence Gulf Ports and Newfoundland and with the Ocean Stry. of the Beaver Line, Allan Line and other companies for Liverpool.
- NEWPORT FOREBAY**, with Grand Trunk Ry. for Durham, Palmerston, etc.
- NEWPORT**, with Grand Trunk Ry. for Whittly and Port Ferry.
- NEWPORT**, with Boston & Maine R.R. (a) for White Mountains, Portland, Strymond, Concord, Manchester, Boston and all points in New England, etc.
- NOBLEDALE**, with St. N. & W. for Toronto, Hamilton, and points south.
- OTTAWA**, with Grand Trunk Ry. and with Steamers of the Ottawa River Navigation Co. during season of navigation, for Montreal and Ottawa River points.
- OWEN SOUND**, during season of navigation, with Canadian Pacific S.S. "ALBERTA," "ATHABASTA," and "SPENCER" for Owen Sound, Port Arthur direct, and All Stars, "ALBERTA," and "SPENCER" for Georgian Bay and Manitowishkegan Ports, Killarney, Manitowishkegan, Shegungah, Little Current, Kagawong, Gore Bay, Spanish River, Port Hope, Algonia Mills, Hilton, Pt. Fairley, Richards Dock, St. Joseph's Island and St. Marie, etc.; also with Steamers of the "Warten and" boats on Indian Point.
- PEPPERBUSH**, with Grand Trunk Ry. for Collingwood, Barrie and all points in Muskoka District.
- PEPPERBUSH**, with Grand Trunk Ry. for Port Hope, Belleville, Midland, etc.
- PORT ARTHUR**, during season of navigation, with Canadian Pacific S.S. "ALBERTA," "ATHABASTA," and "SPENCER" for Owen Sound, Port Arthur direct, and All Stars, "ALBERTA," and "SPENCER" for Georgian Bay and Manitowishkegan Ports, Killarney, Manitowishkegan, Shegungah, Little Current, Kagawong, Gore Bay, Spanish River, Port Hope, Algonia Mills, Hilton, Pt. Fairley, Richards Dock, St. Joseph's Island and St. Marie, etc.; also with Steamers of the "Warten and" boats on Indian Point.
- PORT ARTHUR**, during season of navigation, with the Richelieu & Ontario Navigation Co. (a) by ferry to Ogdensburg (a) with the Ogdensburg & Lake Champlain R.R. and with the Ronio, Watertown & Ogdensburg R.R. for New York and all points in New York State, etc.
- PORT ARTHUR**, with Que. & Lake St. John Ry. (a) for St. Raymond, etc., with ferry for Leith, where connection is made with the Intercolonial Ry. for Riviere du Loup, Montreal, etc.; with the St. John and all points in the Lower Provinces; during season of navigation, with the Richelieu & Ontario Navigation Co. for the Saguenay; and with Steamers of the Quebec Steamship Co. for St. Lawrence Gulf Ports; and with the Ocean Steamers of the Allan and Dominion Royal Mail S.S. Lines for London, Liverpool, Glasgow and points in Europe.
- REBEKA**, with Long Lake Ry. (a)
- REBEKA**, with Kingston & Penbroke Ry. (a) for Kingston, etc.
- ST. JEROME**, with Great Northern Ry. for New Glasgow, etc.
- ST. JOHN'S**, with Central Vermont Ry. for St. Albans, Burlington, Troy, etc.
- ST. JOHN'S**, with Grand Trunk Ry. for St. Albans, Burlington, Troy, etc.
- ST. JOHN'S**, with Grand Trunk Ry. for Richmond, A. C. etc.
- ST. THOMAS**, with Michigan Central Ry. (a) for Chatham, Windsor, Detroit, Chicago, St. Louis, and all points in the Western States, Grand Trunk Ry. for Pt. Stuyves, etc.
- SAN FRANCISCO**, with Steamers for Southern California, South America, Sandwich Islands and Australia.
- SARIE STE. MARIE**, Mich., with Duluth, St. Clair & Algonia Railway (a) for Ignace, Mackinaw, Marquette, Neshanic, Houghton, Ashland, Ishpeming, etc.; with Minneapolis, St. Paul & S. Marie Ry. (a) for Ishpeming, Neshanic, Houghton, Ashland, etc.
- SARIE STE. MARIE**, Mich., during season of navigation, with C. P. Steamship Line and Local Steamship Lines, Lake Superior Transit Company and Lake Michigan & Lake Superior Transportation Company.
- SHARLOTTE LAKE CONNECTIONS**, with Kingston & Penbroke Ry. (a) for Kingston, etc.; during season of navigation, with the Kingston & Penbroke Ry. (a) for Kingston, etc.; during season of navigation, with the St. Lawrence Steamship Company for the Thousand Islands and with the Richelieu & Ontario Navigation Co. for the Saguenay at all appropriate points.
- SHARLOTTE LAKE CONNECTIONS**, with Quebec Central Ry. for St. Frederic, St. Joseph, Levis, etc.
- SHARLOTTE LAKE CONNECTIONS**, with Central Vermont R.R. for St. Albans, Troy, etc.
- TORONTO**, with Grand Trunk Railway (a) for Barrie, Collingwood, Orillia and Muskoka District, Hamilton, St. Catharines, Buffalo and New York (a) during season of navigation, with Grand Trunk Co.'s Company's Steamers for Niagara, Oswego, Buffalo, etc.; with Richelieu & Ontario Navigation Co. for River St. Lawrence points, and Steamers for Hamilton, Charlotte, etc.
- VANCOUVER**, with Steamers (a) for Victoria, Puget Sound, Japan, China, etc.
- VICTORIA**, with Steamers for San Francisco, Portland, Alaska, and all points in Puget Sound; Tacoma, Seattle, etc.
- WATERLOO**, with Central Vermont R.R. for Grand V.
- WATERLOO**, with Grand Trunk Railway for Kincardine, Clinton, Goderich, etc.
- WOODSTOCK**, with Grand Trunk Ry. for Stratford, Norwich and Port Dover.

CONNECTIONS with foreign Railway and Steamship Companies not guaranteed. Steamship sailings herein are weather permitting; and on the St. Lawrence River and Gulf, and on the Lakes during season of navigation only at Brockville during Navigation only. Ferry Connections at Quebec, Prescott and Detroit and Steamship sailings from Vancouver, Victoria and San Francisco, and on Pacific Coast are all the year round.

* See condensed Foreign Time Tables in Canadian Pacific Railway Folder. Time of foreign rail, s.s., steamships and stages is given for information only; it is not guaranteed, and is subject to change. (a) Connections with Hudson Bay and New York are made in Union Mills, when not so marked, the stations of the different Companies are separate.

Baggage should be delivered at Station at least 5 minutes before train is due to leave, or else the Company will not guarantee its being forwarded by same train as passenger.

CANADIAN PACIFIC RAILWAY

SHORT LINE

HALIFAX AND ST. JOHN, N.B., AND MONTREAL

Mixed	Sherbrock Express	Express	MT	STATIONS	Express	Sherbrock Express	Mixed
5:50 AM				758 Iv Halifax, N.S. ar	11:30 PM		
7:35 "				639 Truro, N.S. ar	9:45 "		
10:05 AM				692 Iv Antler, N.S. ar	7:15 PM		
9:50 AM				598 Iv Pictou Chenear	6:50 PM		
11:55 AM				571 Monton, N.B. ar	5:30 PM		
2:00 PM				481 ar St. John N.B. Iv	3:30 PM		
3:00 PM				181 ar St. John N.B. ar	3:10 PM		
4:26 PM				457 Iv Fredrickton ar	12:30 PM		
3:25 PM				411 Iv St. Andrews ar	12:45 PM		
5:45 PM				398 McAdam	11:20 AM		
6:20 "				394 "Amherst	10:15 "		
6:20 "				386 "Lambton Fork	10:31 "		
6:51 "				375 "Forest	10:00 "		
6:59 "				359 "Faton	10:03 "		
7:10 "				365 "Danforth	9:53 "		
7:28 "				356 "Bancroft	9:35 "		
7:32 "				353 "Wytopitlock	9:20 "		
7:37 "				350 "Meadow Brook	9:21 "		
7:45 "				346 "Cross-Atlantic	9:16 "		
7:49 "				344 "Kingman T	9:13 "		
8:10 "				345 Mattawamkeag	8:55 "		
8:27 "				328 "Chester	8:35 "		
9:35 "				299 "Schoodie	7:30 "		
9:55 "				264 "Brownville Jc	7:20 "		
10:35 PM				255 "Ottawa	6:40 PM		
3:35 PM				396 Iv Bangor Ar	10:00 AM		
				B. & P. R. R.			
11:15 AM				250 "Greenville	6:05 AM		
11:31 "				249 "Monsieuland	5:40 "		
11:53 PM				241 "A-Swith	5:20 "		
12:25 AM				229 "Long Pond	4:55 "		
12:40 "				226 "Jackman	4:38 "		
1:05 "				206 "Holob	4:14 "		
1:35 "				195 "Beattie	3:50 "		
1:41 "				191 "Boundary	3:45 "		
2:15 "				175 "Lake Megantic	3:05 "		7:30 PM
2:35 "				165 "Spring Hill	2:35 "		7:00 "
2:48 "				161 "Marsden	R 2:25 "		7:20 "
3:08 "				151 "Scottstown	R 2:00 "		7:55 "
3:37 "				137 "Bury	R 1:33 "		8:12 "
3:52 "				128 "Cook-hire	R 1:11 "		9:10 "
4:06 "				123 "Heronton	R 1:01 "		9:35 "
4:13 "				121 "Belvoir	R12:57 "		10:12 "
4:21 "				117 "Johnville	R12:48 "		10:40 AM
4:37 "				108 "Lennoxville	R12:27 "		1:15 PM
4:55 "				108 "Sherbrooke	12:17 AM		1:37 "
5:09 "				80 "Rock Forest	11:58 PM		2:45 "
5:29 "				80 "Magog	11:37 "		4:10 "
5:55 "				78 "Edmundston	R11:07 "		1:40 "
6:04 "				75 "South Stukely	R10:57 "		5:05 "
6:13 "				70 "Foster	R10:48 "		5:40 "
6:29 "				61 "West Shefford	R10:31 "		6:10 "
6:44 "				54 "Adamsville	R10:18 "		6:25 "
6:53 "				50 "Brigham Jc	R10:10 "		7:05 "
7:10 "				44 "Farnham	10:00 "		7:30 "
7:25 "				39 "St. Johns	9:31 "		8:17 "
7:35 "				5 "Montreal Junc	8:55 AM		8:30 PM
8:25 AM				0 Iv Montreal Jc	8:30 PM		
11:25 AM				0 Iv Montreal Jc	3:40 PM		

n. Daily except Saturday. n. Will stop only to let off or pick up passengers to or from Montreal or points east of Boundary. Train leaves Halifax daily except Sundays, westbound. Sleeping Cars. Flag Stations.

Branch Lines Ontario & Atlantic and Eastern Divisions, etc.

Mxd	Mxd	Exp	M	STATIONS	Exp	Mxd	Mxd
A.M.	P.M.	A.M.	L.V.	Ar	P.M.	A.M.	P.M.
3:00	7:20	0	STANBRIDGE	6:30	8:10	11:35	
4:00	7:25	2	Bedford	8:05	11:28		
4:10	7:32	5	Mystic	7:58	11:10		
4:30	7:45	10	St. Sabine	7:45	10:45		
5:25	8:00	14	FARNHAM	6:50	9:50		
5:45	8:21	20	L.A. Gard'n East	6:28	9:36		
16:55		24	Pointe-au-Loup	19:26			
8:05	8:43	26	Abbotsford	8:08	9:22		
8:16	9:20	31	St. Prime	8:25	9:10		
8:25	10:20	38	Beauchemin	8:10	8:50		
8:29	10:25	41	St. Rossie Jc	6:48	8:40		
8:52	10:55	48	St. Simon	3:40	8:32		
7:05	11:19	53	St. Hugues	3:15	8:20		
17:10	11:31	56	Cavignac	3:00	8:12		
8:20	11:43	59	St. Prime	12:42	8:05		
8:45	12:05	63	St. Germain	2:50	7:57		
9:05	12:22	68	St. David	2:05	6:31		
9:06	12:28	72	Yamaska	1:45	6:19		
19:30	11:2	83	St. Robert	11:45	15:55		
9:45	1:00	82	Ar. SOREL	1:30	6:30		

P.M.	M	STATIONS	A.M.	P.M.
5:30	0	MON'T. DAL. Sq. 6	8:30	
8:25	20	St. Therese	7:45	
8:50	28	ST. ESTACHE	7:10	

P.M.	M	STATIONS	A.M.	P.M.
6:20	0	MON'T. DAL. Sq. 6	8:30	
8:40	20	St. Therese	7:30	
8:45	22	ST. LN Junc.	7:25	
6:55	26	Masouche	7:45	
7:07	27	St. Anne	7:05	
7:15	31	Les Plaines	6:55	
7:30	35	St. Ln	6:40	

P.M.	M	STATIONS	A.M.	P.M.
6:20	0	MON'T. DAL. Sq. 6	8:30	
8:20	20	St. Therese	7:45	
8:35	27	ST. LN Junc.	7:31	
8:55	27	St. Janvier	7:16	
7:15	33	ST. JEROME	6:01	
8:00	41	N. Glasgow GNR	7:00	

MONTREAL TO OTTAWA

STATIONS	St. Paul & Sub. Exp.	Local Exp.	Branch Exp.	Sud. Exp.	Pacific Exp.
Mont'l Dal. Sq. 6 Iv	8:50 AM	1:30 PM	3:00 PM	4:40 PM	6:30 PM
Hochelaga		1:42 PM	3:12 PM	4:47 PM	6:27 PM
Montreal, W. or St.	7:55 AM	10:00 AM		3:15 PM	6:05 PM
Montreal Junc. Iv	7:55 AM	10:10 AM		3:27 PM	6:20 PM
Mile End	9:05 AM	10:27 AM	1:05 PM	3:20 PM	6:35 PM
Sault a. Recollette			2:00 PM	3:30 PM	6:55 PM
Bord a. Plouffe I.			2:02 PM	3:22 PM	6:57 PM
St. Martin I.					6:59 PM
St. Martin Jc. Ar	9:15 AM	10:10 AM	3:10 PM	3:40 PM	6:16 PM
St. Rose	9:27 AM	10:22 AM	3:22 PM	3:52 PM	6:24 PM
St. Therese	10:53 AM		2:30 PM	4:00 PM	6:31 PM
St. Augustin	10:47 AM				6:48 PM
St. Scholastique	10:57 AM				6:58 PM
St. Hermas	10:06 AM				6:05 PM
Lachute	10:18 AM				6:23 PM
St. Philippe	10:27 AM				6:40 PM
Granville	10:41 AM				6:54 PM
CATUQUET, S.	10:48 AM	11:30 AM			7:02 PM
Pointe au Cheou	10:58 AM				7:12 PM
Montbello	11:11 AM				7:20 PM
Papineauville	11:23 AM				7:40 PM
N. Naton Mills	11:32 AM	12:44 PM			7:39 PM
Thurso	11:45 AM				8:02 PM
Rockland	11:51 AM				8:09 PM
Buckingham	12:05 PM				8:23 PM
L'Ange Gard'n W.	12:13 PM				8:30 PM
East Templeton	12:25 PM				8:43 PM
Gatineau	12:34 PM				8:53 PM
Hull	12:42 PM				9:03 PM
OTTAWA, 19th Ar	12:50 PM	1:40 PM			9:10 PM

For train service on Main Line west of Carleton Place see inside folder.

OTTAWA TO MONTREAL

Mix	STATIONS	Atlantic Express	Branch Express	Mixed	Local Express	Express	Express
0	OTTAWA, 19th Ar	4:30 AM			7:00 AM	11:00 AM	4:40 PM
2	Hull				7:08 "	11:05 AM	4:15 "
6	Gatineau				7:16 "		
11	East Templeton				7:24 "	12:01 PM	
17	L'Ange Gard'n W.				7:30 "	12:13 "	
21	Buckingham				7:45 "		1:5 15 "
27	Rockland				7:55 "	12:31 "	
30	Thurso				8:02 "	12:44 "	1:6 30 "
37	N. Naton Mills				8:15 "	12:51 "	
42	Papineauville				8:26 "		1:6 48 "
46	Montbello				8:35 "	1:09 "	
65	Pointe au Cheou				8:56 "	1:23 "	6:23 "
61	CATUQUET, S.	6:10 "			9:05 "		
63	Granville				9:11 "		
72	St. Philippe				9:27 "		6:40 "
77	Lachute	6:36 "			9:38 "		6:50 "
83	St. Hermas				9:49 "	1:21 PM	
86	St. Scholastique				9:57 "	1:21 PM	
93	St. Augustin				10:07 "		7:17 "
101	St. Therese		7:45 AM	9:05 AM	10:24 "		7:31 "
102	St. Rose		7:50 "	9:27 "	10:27 "		7:28 "
108	St. Martin Jc. Iv	7:31 AM	8:00 AM	9:40 AM	10:40 AM	2:52 PM	7:49 PM
109	St. Martin	1:02 PM	1:42 PM				
111	Bord a. Recollette	8:04 "	9:45 "				
111	Sault a. Recollette	8:06 "	9:47 "	10:45 AM			
116	Mile End	7:47 AM	8:15 AM	9:59 AM	10:55 AM	3:05 PM	8:00 PM
123	Montreal Junc. ar	8:56 AM	9:55 AM			3:20 PM	8:11 PM
128	Montreal W. or St.	9:15 AM				3:30 PM	8:30 PM
119	Hochelaga	8:25 AM	10:10 AM	11:00 AM			
120	Mont'l Dal. Sq. 6 Ar	8:00 AM	8:30 AM	10:15 AM	11:00 AM		8:20 PM

OTTAWA AND BROCKVILLE

Tor Exp	Mix	STATIONS	Exp	Exp	Local Exp	All Exp	O.S.M. Exp	Dk'le Exp	U'fax Exp	Mont Exp
10:45	8:30	1	OTTAWA, 19th Ar	11:35	12:20	4:10	5:35	8:55	11:35	5:45
	8:38	1	Brenda I.					8:48		
10:55	8:43	2	Bellevue	11:45				8:48		
	8:56	3	Bells Corners					8:42	11:23	5:32
11:15	9:16	2	Stittville	12:02		5:00		8:30	11:05	5:14
	19:40	2	Ashton	12:20				7:58	11:45	4:56
11:46	10:00	2	45	12:45	1:27	3:10	4:45	7:45	10:35	4:47
	10:11		32					7:26		
11:43	1									

CANADIAN PACIFIC RAILWAY

Condensed Time Table to Points on Connecting Railways

GRAND TRUNK RAILWAY (N. & N. W. DIV.)

HEAD DOWN				HEAD UP			
I. Pac. Exp.	Exp.	Mail	STATIONS	Exp.	Mail	Mail	Atl. Exp.
11:00 p.m.	8:40 p.m.	8:15 a.m.	Lv. Toronto, Ont.	9:20 a.m.	1:40 p.m.	7:20 p.m.	4:30 p.m.
11:10 p.m.	8:50 p.m.	8:25 a.m.	Ar. Brockville, Ont.	9:30 a.m.	1:50 p.m.	7:30 p.m.	4:40 p.m.
1:40 a.m.	9:20 p.m.	11:00 a.m.	Lv. Alexandria, Ont.	9:40 a.m.	2:00 p.m.	7:40 p.m.	4:50 p.m.
11:00 p.m.	12:15 p.m.	Ar. Pembroke, Ont.	Lv.	9:50 a.m.	2:10 p.m.	7:50 p.m.	5:00 p.m.
10:00 p.m.	12:35 p.m.	Ar. Collingwood, Ont.	Lv.	10:00 a.m.	2:20 p.m.	8:00 p.m.	5:10 p.m.
.....	1:00 p.m.	Ar. Meaford, Ont.	Lv.	10:10 a.m.	2:30 p.m.	8:10 p.m.	5:20 p.m.
1:00 a.m.	8:55 p.m.	11:20 a.m.	Lv. Alexandria, Ont.	10:20 a.m.	2:40 p.m.	8:20 p.m.	5:30 p.m.
1:10 a.m.	9:05 p.m.	11:30 a.m.	Ar. Barris, Ont.	10:30 a.m.	2:50 p.m.	8:30 p.m.	5:40 p.m.
2:30 a.m.	9:25 p.m.	12:10 p.m.	Ar. Orillia, Ont.	10:40 a.m.	3:00 p.m.	8:40 p.m.	5:50 p.m.
4:10 a.m.	1:40 p.m.	Ar. Gravenhurst, Ont.	10:50 a.m.	3:10 p.m.	8:50 p.m.	6:00 p.m.
4:20 a.m.	2:10 p.m.	Ar. Bradford, Ont.	11:00 a.m.	3:20 p.m.	9:00 p.m.	6:10 p.m.
8:35 a.m.	7:55 p.m.	Ar. NORTH BAY, Ont.	Lv.	11:10 a.m.	3:30 p.m.	9:10 p.m.	6:20 p.m.
.....	4:30 p.m.	7:05 a.m.	Ar. HAMILTON, Ont.	11:20 a.m.	3:40 p.m.	9:20 p.m.	6:30 p.m.
.....	5:30 p.m.	8:05 a.m.	Ar. MILTON, Ont.	11:30 a.m.	3:50 p.m.	9:30 p.m.	6:40 p.m.
.....	7:30 p.m.	10:25 a.m.	Ar. Milton, C.P.R. 31, Ar.	9:11 a.m.	6:35 p.m.
.....	8:12 p.m.	11:25 a.m.	Ar. Toronto, C.P.R. 4, Ar.	8:01 p.m.	4:35 p.m.
.....	8:00 p.m.	11:45 a.m.	Ar. Toronto, O.C.P.R. 1, Ar.	7:30 a.m.	4:15 p.m.
.....	5:30 p.m.	8:02 a.m.	Ar. Milton, Ont.	10:02 a.m.	8:09 p.m.
.....	6:18 p.m.	8:41 p.m.	Ar. Georgetown, Ont.	9:22 p.m.	7:32 p.m.
.....	6:43 p.m.	9:08 a.m.	Ar. Inglewood, Ont.	8:50 a.m.	6:50 p.m.
.....	4:45 p.m.	7:02 a.m.	Lv. Toronto, O.C.P.R. Ar.	10:55 a.m.	8:20 p.m.
.....	9:20 p.m.	9:20 a.m.	Ar. Cardwell, Ont.	9:23 a.m.	6:57 p.m.
.....	8:57 p.m.	9:20 a.m.	Lv. Cardwell, Ont.	8:28 a.m.	6:27 p.m.
.....	7:40 p.m.	10:12 a.m.	Ar. Beeton, Ont.	7:50 p.m.	8:00 p.m.
.....	8:05 p.m.	10:33 a.m.	Ar. Alliston, Ont.	7:15 p.m.	6:20 p.m.
.....	8:40 p.m.	11:21 a.m.	Ar. Glenora, Ont.	6:34 p.m.	4:08 p.m.
.....	8:45 p.m.	11:10 a.m.	Ar. Alton, Ont.	6:30 a.m.	6:00 p.m.
.....	8:35 a.m.	7:55 p.m.	Ar. NORTH BAY, Ont.	7:00 p.m.	1:15 a.m.

Train arriving at Toronto, Ont., from the West 9:00 p.m. makes connections at Toronto, Ont., with trains for Ottawa, Montreal and the East. Passengers from East arriving by morning train destined for Northern Ry. Main Line points, should change cars at Parkdale. An accommodation train leaves Toronto week days 11:45 a.m. for (Gravenhurst and Meaford).

Canadian Pacific Sleeping Car for North Bay is attached to Pacific Express leaving Toronto 11:00 p.m. daily except Sundays, via Grand Trunk Railway (N. & N. W. Div.), and via O.C.P.R. as far as North Bay where passengers will be transferred to Through Sleeper, via Canadian Pacific Transcontinental Route for North-West and Vancouver. Passengers on the ATLANTIC EXPRESS from the North-West and Vancouver, for Toronto, on arrival at North Bay, will change to Sleeper via Grand Trunk Railway (N. & N. W. Div.).

Condensed Time Table to and from Maritime Provinces

Express	Express	Via QUEBEC	RAILWAYS	Express	Express
4:35 pm	4:00 am	Lv. ST. THOMAS, Ont.	Ar. LONDON, Ont.	12:30 pm	8:30 pm
5:00 "	Ar. GUELPH, Ont.	12:00 pm
8:15 "	8:45 "	Ar. TORONTO, Ont.	Cananda	8:50 "	10:30 am
11:35 "	11:40 am	Ar. PETERBORO, Ont.	6:50 "	1:56 "
11:55 pm	12:50 pm	Ar. KINGSTON, Ont.	Pacific	4:40 "	4:40 am
.....	2:00 "	Ar. BROOKVILLE, Ont.	2:25 "
4:30 am	1:40 "	Ar. OPELAWA, Ont.	Railway	12:45 pm	11:55 pm
8:30 am	10:00 pm	Ar. MONPEL, Que.	6:30 am	8:05 "
9:30 pm	6:30 am	Ar. QUEBEC, Que.	10:03 pm	1:30 pm
.....	Ferry with Lewis
8:10 am	5:30 pm	Lv. QUEBEC, Que.	Ar.	8:15 pm	6:30 am
8:25 "	5:40 "	Lake St. John Ry. Co.	Quebec	8:00 "	6:35 "
9:25 "	6:48 "	Lake St. Joseph	and	6:48 "	5:35 "
10:10 "	7:15 pm	St. Basile	Lake St. John	5:40 "	4:57 "
11:20 am	Riv. de la Perle	Railway	2:15 pm	3:24 am
5:25 pm	Ar. Roberval, Que.	Lv.	9:00 pm
11:30 "	7:30 "	Lv. LEVES, Que.	Ar.	13:10 "
18:25 "	12:10 "	Lv. Riv. du Loup, Que.	Ar.	9:20 "
19:10 "	13:15 "	Lv. Trole Pistoles, Que.	Ar.	11:52 "
20:55 "	14:40 "	Lv. Rhinusk, Que.	Intercolonial	13:15 "
21:15 "	15:25 "	Ar. Ste. Flavie, Que.	12:35 "
1:00 "	18:45 "	Ar. Campbellton, Que.	Railway	8:30 "
1:15 "	Ar. Bathurst, Que.	2:11 "
1:32 "	Ar. New Brunswick, Que.	2:18 "
1:40 "	Ar. Moncton, Que.	2:18 "
Express	Express	Mt. Central Ontario Railway	Express	Express	Express
8:45 am	8:45 pm	Lv. TORONTO, Ont.	Ar. TORONTO, Ont.	8:50 pm	8:50 pm
11:35 am	11:40 pm	Ar. PETERBORO, Ont.	Ar.	6:50 "	6:50 "
12:54 pm	12:55 pm	Ar. CENTRAL ONT. J.C. 15, Ont.	Lv.	4:30 pm	4:30 pm
4:30 pm	11:00 am	Ar. Central Ontario J.C. 15, Ar.	Ar.	8:30 am	4:25 pm
8:50 pm	1:30 pm	Ar. Cos Hill, Ont.	Ar.	6:00 am	2:20 pm
4:30 pm	8:40 am	Ar. Central Ontario J.C. 15, Ar.	Ar.	11:00 am	8:53 pm
5:42 pm	10:05 am	Ar. TRENTON, Ont.	Ar.	9:35 am	2:30 pm
8:44 am	2:50 pm	Ar. PICTON, Ont.	Ar.	9:05 am

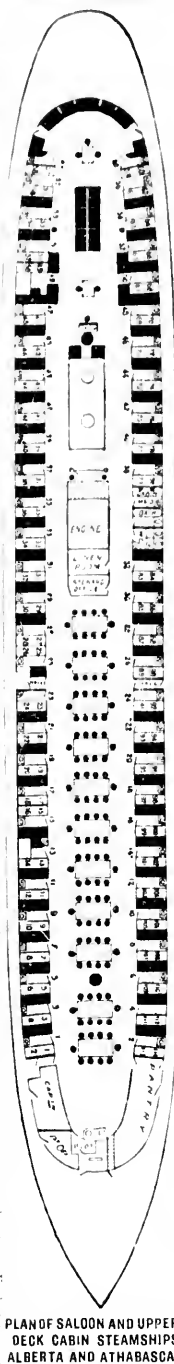
Time of and connections with foreign lines not guaranteed. † Flag stations. n Daily except Saturday.

Canadian Pacific Steamship Line,

CONSISTING OF THE CLYDE-BOLT STEAMSHIPS "ALBERTA" and "ATHABASCA"

West of Port Arthur.

Consisting of the CLYDE-BOLT STEAMSHIPS "ALBERTA" and "ATHABASCA"



PLAN OF SALOON AND UPPER-DECK CABIN STEAMSHIPS ALBERTA AND ATHABASCA.

CONDENSED THROUGH TIME TABLE - Transcontinental Lake and Rail Route, via Owen Sound and Steamship Line

WEST-BOUND				EAST-BOUND			
Exp.	Mail	Mail	STATIONS	Exp.	Mail	Mail	STATIONS
11:00 p.m.	8:40 p.m.	8:15 a.m.	Lv. Toronto, Ont.	9:20 a.m.	1:40 p.m.	7:20 p.m.	Ar. Toronto, Ont.
11:10 p.m.	8:50 p.m.	8:25 a.m.	Ar. Brockville, Ont.	9:30 a.m.	1:50 p.m.	7:30 p.m.	Ar. Brockville, Ont.
1:40 a.m.	9:20 p.m.	11:00 a.m.	Lv. Alexandria, Ont.	9:40 a.m.	2:00 p.m.	7:40 p.m.	Lv. Alexandria, Ont.
11:00 p.m.	12:15 p.m.	Ar. Pembroke, Ont.	Lv.	9:50 a.m.	2:10 p.m.	7:50 p.m.	Ar. Pembroke, Ont.
10:00 p.m.	12:35 p.m.	Ar. Collingwood, Ont.	Lv.	10:00 a.m.	2:20 p.m.	8:00 p.m.	Ar. Collingwood, Ont.
.....	1:00 p.m.	Ar. Meaford, Ont.	Lv.	10:10 a.m.	2:30 p.m.	8:10 p.m.	Ar. Meaford, Ont.
1:00 a.m.	8:55 p.m.	11:20 a.m.	Lv. Alexandria, Ont.	10:20 a.m.	2:40 p.m.	8:20 p.m.	Lv. Alexandria, Ont.
1:10 a.m.	9:05 p.m.	11:30 a.m.	Ar. Barris, Ont.	10:30 a.m.	2:50 p.m.	8:30 p.m.	Ar. Barris, Ont.
2:30 a.m.	9:25 p.m.	12:10 p.m.	Ar. Orillia, Ont.	10:40 a.m.	3:00 p.m.	8:40 p.m.	Ar. Orillia, Ont.
4:10 a.m.	1:40 p.m.	Ar. Gravenhurst, Ont.	10:50 a.m.	3:10 p.m.	8:50 p.m.	Ar. Gravenhurst, Ont.
4:20 a.m.	2:10 p.m.	Ar. Bradford, Ont.	11:00 a.m.	3:20 p.m.	9:00 p.m.	Ar. Bradford, Ont.
8:35 a.m.	7:55 p.m.	Ar. NORTH BAY, Ont.	Lv.	11:10 a.m.	3:30 p.m.	9:10 p.m.	Ar. NORTH BAY, Ont.
.....	4:30 p.m.	7:05 a.m.	Ar. HAMILTON, Ont.	11:20 a.m.	3:40 p.m.	9:20 p.m.	Ar. HAMILTON, Ont.
.....	5:30 p.m.	8:05 a.m.	Ar. MILTON, Ont.	11:30 a.m.	3:50 p.m.	9:30 p.m.	Ar. MILTON, Ont.
.....	7:30 p.m.	10:25 a.m.	Ar. Milton, C.P.R. 31, Ar.	9:11 a.m.	6:35 p.m.
.....	8:12 p.m.	11:25 a.m.	Ar. Toronto, C.P.R. 4, Ar.	8:01 p.m.	4:35 p.m.
.....	8:00 p.m.	11:45 a.m.	Ar. Toronto, O.C.P.R. 1, Ar.	7:30 a.m.	4:15 p.m.
.....	5:30 p.m.	8:02 a.m.	Ar. Milton, Ont.	10:02 a.m.	8:09 p.m.
.....	6:18 p.m.	8:41 p.m.	Ar. Georgetown, Ont.	9:22 p.m.	7:32 p.m.
.....	6:43 p.m.	9:08 a.m.	Ar. Inglewood, Ont.	8:50 a.m.	6:50 p.m.
.....	4:45 p.m.	7:02 a.m.	Lv. Toronto, O.C.P.R. Ar.	10:55 a.m.	8:20 p.m.
.....	9:20 p.m.	9:20 a.m.	Ar. Cardwell, Ont.	9:23 a.m.	6:57 p.m.
.....	8:57 p.m.	9:20 a.m.	Lv. Cardwell, Ont.	8:28 a.m.	6:27 p.m.
.....	7:40 p.m.	10:12 a.m.	Ar. Beeton, Ont.	7:50 p.m.	8:00 p.m.
.....	8:05 p.m.	10:33 a.m.	Ar. Alliston, Ont.	7:15 p.m.	6:20 p.m.
.....	8:40 p.m.	11:21 a.m.	Ar. Glenora, Ont.	6:34 p.m.	4:08 p.m.
.....	8:45 p.m.	11:10 a.m.	Ar. Alton, Ont.	6:30 a.m.	6:00 p.m.
.....	8:35 a.m.	7:55 p.m.	Ar. NORTH BAY, Ont.	7:00 p.m.	1:15 a.m.

Time changes one hour at Port Arthur, Brandon and Bonald.

about 1st July this service will be tri-weekly, the new steel steamer "MANITOBA" being then put on the route.

CAN MA

10:30 pm
10:55 pm
12:10 pm
1:00 pm
3:40 pm
10:35 pm
3:25 am
6:15 am
1:40 pm
2:30 pm
11:15 am
12:02 pm
12:36 pm
1:55 "
8:15 "
7:05 "
10:45 pm
9:10 am
9:30 am
10:30 pm
1:40 am
4:55 am
1:40 pm
10:30 pm
8:40 am
2:40 pm
6:40 "
7:25 pm
10:45 pm
5:25 am
2:35 pm
3:10 pm
10:30 pm
13:30 "
3:40 "
4:10 pm
6:00 pm
8:40 "
8:20 pm
10:07 pm
1:10 am
2:10 "
3:35 "
7:30 "
8:10 "
10:10 am
10:25 am
13:20 "
16:52 "
18:15 "
23:55 "
2:24 "
3:45 "
5:54 "
17:30 "
1:20 "
5:30 "
8:35 "
13:05 "
22:03 "
7:35 "
14:10 "
14:15 "
19:30 "
9:15 am
1:30 pm
6:00 pm
2:15 pm
6:37 pm
1:45 am
8:30 am
7:55 pm
3:40 am
7:45 am

Thro
ween St
Dhair
Meal
net
Time

CONDENSED THROUGH TIME TABLE - Transcontinental Lake and Rail Route, via Owen Sound and Steamship Line

CANADIAN PACIFIC RAILWAY

MANITOBA-PACIFIC ROUTE

CONDENSED TIME TABLE

HEAD DOWN		VIA ST. PAUL	LEAF UP		
10:50 pm	5:55 pm	Lv. Chicago	Ar. C. B. & Q. Rd.	9:30 am	10:55 pm
12:10 am	7:07 pm	Ar. Aurora	" "	8:15 "	9:40 "
9:55 am	3:35 pm	Lv. LaCrosse	Ar. "	12:01 pm	12:50 pm
3:00 pm	7:55 "	Ar. St. Paul	Ar. C. B. & N. Ry.	7:30 pm	7:50 am
3:40 pm	8:32 am	Ar. Minneapolis	Ar. "	6:40 pm	6:45 am
9:30 am	Lv. St. Louis	Ar. C. B. & Q. Rd.	5:20 pm		
10:35 pm	5:30 pm	Lv. Chicago	Ar. "	9:30 am	7:00 am
3:24 am	10:06 pm	Ar. Madison	Ar. "	4:50 "	1:30 am
6:15 am	12:35 pm	Lv. Elroy	Ar. C. & N.-W. Ry.	2:25 pm	10:41 pm
1:30 pm	7:00 am	Ar. St. Paul	Ar. "	7:30 pm	3:30 "
2:30 pm	8:03 am	Ar. Minneapolis	Ar. "	8:50 pm	2:30 pm
11:15 am	Lv. Kansas City	Ar. "	4:45 pm		
12:02 pm	Lv. Leavenworth	Ar. Kan. C. & St. J.	3:50 "		
12:26 "	Ar. Atchison	" & C. Bluffs	3:16 "		
8:16 "	Ar. St. Joseph	" "	1:55 pm		
8:16 "	Ar. Omaha	" "	9:30 pm		
7:05 "	Ar. Council Bluffs	" "	8:55 "		
10:45 pm	Lv. Sioux City	Ar. C. & St. P., M. & O.	4:41 am	7:25 pm	
9:00 am	8:35 pm	Ar. Minneapolis	Ar. Omaha Ry.	6:40 pm	8:25 am
9:30 am	7:03 pm	Ar. St. Paul	Ar. "	8:00 pm	7:50 am
10:30 pm	8:00 pm	Lv. Chicago	Ar. C. M. & St. P. Ry.	10:00 pm	9:30 am
1:40 am	11:10 "	Ar. Milwaukee	Ar. "	7:05 pm	6:15 "
8:55 am	2:55 "	Lv. LaCrosse	Ar. "	11:45 am	12:10 pm
1:50 pm	7:30 am	Ar. St. Paul	Ar. P. Ry.	7:15 pm	7:20 pm
10:30 pm	1:45 pm	Lv. Chicago	Ar. (Albert Lea Route)	1:16 pm	6:25 pm
8:40 pm	10:50 pm	Ar. Cedar Rapids	Ar. "	4:25 pm	7:25 pm
2:40 pm	4:25 pm	Lv. Albert Lea	Ar. "	10:55 pm	1:50 pm
8:40 "	8:15 "	Ar. Minneapolis	Ar. "	7:05 "	9:25 am
7:26 pm	9:00 am	Ar. St. Paul	Ar. "	9:25 pm	8:15 pm
10:45 pm	5:30 pm	Lv. Chicago	Ar. C., St. P. & K. C. Ry.	11:35 am	10:45 pm
5:22 am	11:23 pm	Ar. Dubuque	Ar. "	3:40 am	4:25 pm
2:36 pm	7:30 am	Ar. St. Paul	Ar. "	7:23 pm	7:15 am
3:10 pm	8:10 am	Ar. Minneapolis	Ar. "	7:00 pm	7:05 am
10:30 pm	7:30 pm	Lv. Chicago	Ar. "	11:35 am	7:30 am
3:40 "	10:10 pm	Ar. Milwaukee	Ar. "	8:47 am	
12:30 "	7:55 am	Ar. Eau Claire	Ar. Wis. Gen. Rd.	10:40 pm	5:10 pm
3:40 "	10:55 am	Ar. St. Paul	Ar. "	7:45 "	2:00 "
4:10 pm	11:30 am	Ar. Minneapolis	Ar. "	7:10 pm	1:15 pm
5:00 pm	Lv. St. Paul	Ar. "	9:30 am		
5:40 "	Ar. Minneapolis	Ar. "	8:50 am		
9:20 "	Ar. St. Cloud	Ar. St. Paul,	6:30 "		
10:07 pm	Ar. Sank Centre	" "	1:31 "		
1:10 am	Ar. Fergus Falls	Ar. M. & M.	1:16 am		
2:10 "	Ar. Burdett	" "	9:05 pm		
3:35 "	Ar. Fargo	Ar. "	7:25 "		
7:30 "	Ar. Grand Forks	Ar. "	4:00 "		
8:13 "	Ar. Grafton	Ar. "	2:22 "		
10:10 am	Lv. Neche	Ar. "	13:45 pm		
10:25 am	Lv. Greta	Ar. "	13:15 pm		
12:50 pm	Ar. Windpeck	Ar. "	9:45 am		
13:20 "	Lv. Portage La Prairie	Ar. "	16:00 "		
18:15 "	Ar. Brandon	Ar. "	13:37 "		
23:55 "	Ar. Brandon	Ar. "	10:45 "		
2:20 "	Ar. Qu'Appelle	Ar. Canadian	4:10 "		
3:45 "	Ar. Regina	Ar. "	1:28 "		
5:50 "	Ar. Moose Jaw	Ar. "	23:55 "		
17:30 "	Ar. Medicine Hat	Ar. "	22:05 "		
17:30 "	Ar. Calgary	Ar. "	10:50 "		
13:05 "	Ar. Banff Hot Springs	Ar. "	3:35 "		
8:35 "	Ar. Field	Ar. "	23:45 "		
13:05 "	Ar. Glacier House	Ar. "	21:25 "		
22:03 "	Ar. Kinloss	Ar. "	14:30 "		
7:35 "	Ar. North Bend	Ar. "	5:03 "		
14:10 "	Ar. New Westminster B.C.	Ar. "	19:51 "		
13:15 "	Ar. Vancouver, B.C. Lv.	Ar. "	15:00 "		
19:30 "	Ar. Victoria, B.C. Lv.	Ar. "	12:45 "		
9:15 am	Ar. Port Townsend, W.T.	Ar. "	4:10 "		
1:30 pm	Ar. Seattle, W.T.	Ar. Steamers,	2:00 pm		
9:00 pm	Ar. Tacoma, W.T.	Ar. "	9:45 pm		
12:50 pm	Ar. Kalama, W.T.	Ar. N. P. Rd.	7:00 am		
3:15 pm	Ar. Portland, Ore. Lv.	Ar. "	3:15 pm		
5:27 pm	Ar. Aurora, Ore. Lv.	Ar. "	11:15 am		
1:45 am	Ar. Roseburg	Ar. Steamer	9:05 am		
8:30 am	Ar. Ashland	Ar. Route	12:50 am		
7:55 pm	Ar. Redding, Cal.	Ar. "	6:40 pm		
3:40 am	Ar. Sacramento	Ar. So. P. Rl.	6:55 am		
7:45 am	Ar. San Francisco	Ar. "	11:00 pm		
			7:00 pm		

Through First Class and Colonist Sleepers run daily, Sundays included, between St. Paul, Minneapolis and Vancouver, in both directions. Dining Cars run on Transcontinental route between St. Paul and Vancouver. Meals served in Mountains at Company's Hotels, Field, Glacier and North Bend. Time of and connections with foreign lines not guaranteed.

CANADIAN PACIFIC RAILWAY

Condensed Time Tables to and from New York, Etc.

GOING SOUTH HEAD DOWN		VIA MONTREAL	RAILWAYS	GOING NORTH HEAD UP	
.....	4:30 pm	Lv. MONTREAL	Ar. G. T., D. & H. and N. Y. Cent.	10:20 pm	8:35 am
.....	8:20 "	Ar. Rouee P.	" "	3:10 "	1:10 "
.....	7:35 pm	Ar. Plattsburg	" "	7:10 "	5:40 "
.....	12:25 am	Ar. Saratoga	" "	3:40 "	1:10 am
.....	2:15 "	Ar. Albany	" "	1:05 pm	11:15 pm
.....	7:45 am	Ar. New York	" "	8:40 am	6:30 pm
.....	4:30 pm	Lv. MONTREAL	Ar. G. T., C. V. and N. Y. Cent.	11:15 pm	8:35 am
.....	8:40 "	Ar. St. Albans	" "	8:30 "	6:40 "
.....	10:40 pm	Ar. Rutland	" "	5:10 "	2:40 "
.....	1:45 am	Ar. Troy	" "	1:45 pm	11:13 pm
.....	7:00 am	Ar. New York	" "	8:40 am	6:30 pm
.....	4:30 pm	Lv. MONTREAL	Ar. G. T., D. & H. and West Shore	10:20 pm	8:35 am
.....	8:20 "	Ar. Rouee P.	" "	3:10 "	1:10 "
.....	7:15 pm	Ar. Plattsburg	" "	7:40 "	5:40 "
.....	2:15 am	Ar. Albany	" "	1:05 pm	10:15 pm
.....	7:55 am	Ar. New York	" "	7:40 am	6:30 pm

Express		Express	VIA TORONTO AND NIAGARA FALLS	RAILWAYS	Express	Express
5:50 am	3:35 pm	Lv. OWEN SOUND	Ar. O. P. Ry.	10:00 pm	10:10 pm	
8:50 pm	7:00 pm	Ar. TORONTO	" "	4:45 pm	4:45 pm	
7:00 pm	7:00 pm	Lv. NORTH BAY	" "	8:35 am	8:35 am	
4:30 am	4:30 am	Ar. TORONTO	" "	11:00 pm	11:00 pm	
4:15 pm	2:00 pm	Lv. TORONTO	Ar. Niagara, N. Y. & W. R. Ry.	8:00 pm	8:00 pm	
7:15 "	6:00 "	Ar. Lewiston	" "	5:25 "	5:25 "	
8:16 "	8:30 "	Ar. Niagara Falls	" "	1:55 "	1:55 "	
9:00 pm	7:20 pm	Ar. Buffalo	Ar. G. T. Ry.	1:05 pm	1:10 pm	
12:30 pm	7:15 am	Lv. TORONTO	Ar. G. T. Ry.	5:30 pm	5:30 pm	
2:00 "	3:15 "	Ar. Hamilton	" "	2:16 "	2:16 "	
3:17 "	11:00 "	Ar. Niagara Falls	" "	12:15 "	12:15 "	
3:26 "	11:10 am	Ar. SHIP BRIDGE	Ar. N. Y. C.	8:25 "	11:50 pm	
6:00 "	12:30 pm	Ar. Buffalo	Ar. N.Y., L. E. & W. R.	12:05 pm	11:18 pm	
5:40 pm	12:35 pm	Ar. Buffalo	Ar. "	7:10 am	1:15 am	
5:05 pm	2:10 pm	Lv. Susq. Bridge	Ar. N. Y. C.	6:45 "	1:15 am	
8:10 "	4:00 "	Ar. Buffalo	" "	4:20 "	10:00 pm	
8:00 "	8:10 "	Ar. Rochester	" "	2:10 "	2:10 pm	
10:15 pm	4:40 pm	Ar. Syracuse	Ar. West Shore	6:00 pm	10:30 am	
7:20 am	6:45 am	Ar. NEW YORK	Ar. "	1:01 pm	12:13 am	
4:00 pm	8:14 pm	Lv. Susq. Bridge	Ar. N. Y., L. E. & W. Ry.	11:00 am	10:30 pm	
6:30 "	11:00 pm	Ar. Buffalo	" "	7:51 am	6:51 pm	
10:55 pm	3:30 am	Ar. Elmhurst	Ar. "	8:36 pm	7:40 am	
8:00 am	12:15 pm	Ar. NEW YORK	Ar. "	1:40 pm	12:40 am	
8:10 pm	4:40 pm	Lv. Susq. Bridge	Ar. West Shore	12:30 pm	11:10 pm	
8:25 "	6:20 "	Ar. Buffalo	" "	7:10 am	6:53 pm	
1:26 pm	10:35 pm	Ar. Syracuse	Ar. "	8:00 pm	9:40 am	
10:25 am	7:55 am	Ar. NEW YORK	Ar. "			

Express		Express	VIA BROOKVILLE AND PRESCOTT	RAILWAYS	Express	Express
1:30 pm	10:03 pm	Lv. QUEBEC	Ar. CANADIAN	6:30 pm	6:30 am	
8:45 "	9:20 am	Ar. MONTREAL	" "	7:55 pm	7:55 pm	
8:45 pm	8:00 pm	Lv. BROCKVILLE	Ar. PACIFIC	7:45 am	8:50 pm	
8:00 am	1:45 pm	Lv. OTTAWA	Ar. RAILWAY	1:00 pm	
10:20 am	4:00 pm	Ar. PRESCOTT	Ar. "	1:50 pm	
.....	11:30 am	Lv. OTTAWA	Ar. "	5:45 pm	4:55 am	
.....	12:46 pm	Lv. CARLETON	Ar. "	4:47 "	7:45 "	
.....	2:26 pm	Ar. BROCKVILLE	Ar. "	3:00 pm	6:00 am	
.....	10:55 am	Lv. OGDENSBURG	Ar. HOME,	12:25 pm	6:40 pm	
.....	4:58 "	Ar. CENTRAL SQUARE	Ar. "	7:10 "	6:00 "	
.....	5:26 "	Ar. SYRACUSE	Ar. WATERTOWN	6:25 "	12:40 "	
.....	6:15 "	Ar. OSWEGO	Ar. "	7:00 am	1:16 pm	
.....	8:50 pm	Ar. ROCHESTER	Ar. AND	9:45 am	9:45 am	
.....	4:25 pm	Lv. OGDENSBURG	Ar. OGDENSBURG	12:40 pm	6:20 pm	
.....	4:58 "	Ar. MORRISTOWN	Ar. "	7:43 "	6:00 "	
.....	7:10 "	Ar. Carthage	Ar. "	7:52 "	2:17 "	
.....	8:53 "	Ar. Boonville	Ar. "	9:35 am	1:00 pm	
.....	10:10 pm	Ar. UTICA	Ar. NEW YORK CENTRAL	5:21 am	5:21 am	
.....	10:35 pm	Lv. UTICA	Ar. "	8:30 pm	8:30 "	
.....	9:46 pm	Lv. ALBANY	Ar. "	8:00 pm	8:00 "	
.....	6:45 am	Ar. NEW YORK	Ar. "	
.....	1:05 am	Lv. ALBANY	Ar. "	
.....	4:15 "	Ar. ALBANY	Ar. "	
.....	7:30 "	Ar. Weehawken	Ar. "	
.....	7:55 am	Ar. NEW YORK	Ar. "	
.....	6:15 am	Lv. UTICA	Ar. DELAWARE,	7:55 am	
.....	1:07 pm	Ar. SCRANTON	Ar. LACRAWANNA	2:15 am	
.....	9:00 pm	Ar. NEW YORK	Ar. AND WESTERN	9:00 pm	
.....	7:52 am	Lv. CENTRAL SQUARE	Ar. N. Y., ONTARIO	6:45 am	7:20 pm
.....	7:10 pm	Ar. NEW YORK	Ar. AND WESTERN	9:10 pm	7:35 pm

Time of and connections with foreign lines not guaranteed. Refreshment Stns.

CANADIAN PACIFIC RAILWAY

MONTREAL & BOSTON AIR LINE

CONDENSED TIME TABLE

READ DOWN.		VIA MONTREAL		Railways	READ UP.	
* Exp.	Exp.	Exp.	Exp.		* Exp.	Exp.
1 30 pm	10 03 pm	10 03 pm	10 03 pm	2 30 pm	10 03 pm	6 30 am
3 31 "	12 49 pm			12 27 pm	8 00 "	3 38 "
4 30 "	1 45 am	1 45 am	1 45 am	11 21 am	7 06 "	2 35 "
6 16 pm	3 31 am	2 50 am	2 50 am	10 45 am	0 24 pm	1 36 am
8 36 pm				10 25 am		
		3 18 am		9 15 pm		
		4 18 "		8 57 "		
		5 18 "		8 45 "		
		6 15 am		7 36 pm		
8 30 pm	6 56 am	4 35 am		9 25 am	4 59 pm	11 53 pm
7 51 "	8 24 "	6 15 "		8 25 "	3 46 "	10 16 "
8 05 pm	8 40 am	6 30 am		8 10 am		10 00 pm
1 4 30 pm	7 30 am	4 30 am		12 50 pm	8 19 pm	12 15 am
1 6 46 "	8 25 "	5 25 "		11 28 am	7 49 "	
1 8 50 pm	9 28 am	6 35 am		10 18 am	7 30 "	
		7 30 am		10 15 am	8 22 pm	
		7 30 am			7 30 pm	
		7 30 am			7 30 pm	
1 7 31 pm	10 24 am	8 00 am		9 23 am	6 31 pm	
8 06 "	10 55 "	7 47 am		9 05 am	4 55 "	8 53 pm
9 30 pm	11 10 am	8 00 am		18 50 am	4 40 pm	8 40 pm
1 8 45 am		10 46 pm		8 50 pm		7 45 am
1 10 40 am		11 38 pm		6 50 "		1 46 "
1 4 10 pm		7 45 "		1 28 pm		12 45 am
7 35 "		7 45 "		9 32 am		1 57 pm
7 55 pm		7 15 am		9 20 am		1 18 45 pm
1 8 10 pm	6 40 pm	9 12 am		7 25 am	9 55 am	8 30 pm
9 17 "	6 51 "	9 11 "		7 15 "	9 45 "	8 17 "
9 07 pm	7 00 pm	10 02 am		6 25 am	8 10 am	7 30 pm
	1 30 pm			1 00 pm	1 53 pm	
	2 30 "			12 00 pm	12 00 pm	7 29 pm
	4 30 pm			10 20 am	10 20 am	8 35 pm
	6 15 pm			7 50 am		
	8 40 pm			5 55 am	8 10 am	8 55 pm
10 03 pm	8 15 "	10 50 am		5 52 am	7 32 "	8 33 pm
8 20 pm	8 20 pm	10 30 am		5 52 am	7 36 am	
	6 35 pm			9 40 am	9 40 am	
	7 12 "	6 15 pm		8 20 "	8 20 "	9 30 pm
	7 16 pm	6 30 pm		7 40 am	7 40 am	9 05 pm
	8 40 pm			5 12 am	7 10 am	8 14 pm
10 26 pm	8 47 "	11 17 am		5 05 "	7 02 "	8 07 "
10 48 "	8 10 "	11 34 am		4 50 "	6 45 "	6 52 "
11 32 "	8 51 "	12 04 pm		4 12 "	6 05 "	6 17 "
11 55 pm	10 35 "	12 40 "		3 40 "	5 10 "	4 43 "
12 05 am	10 50 pm	1 05 "		3 30 "	5 30 "	4 48 "
1 15 "	12 39 am	3 12 "		2 21 "	3 28 "	3 36 "
1 35 am	12 55 am	3 30 pm		2 04 am	3 15 am	3 19 pm
1 59 am		4 10 pm		9 50 pm		12 55 am
1 59 pm		8 05 pm		5 45 pm		8 45 am
2 15 am	1 53 am	3 07 pm		1 20 am	2 25 am	3 28 pm
	3 15 am				12 40 am	
	6 08 "				9 17 pm	
	6 40 "				8 38 "	
	6 56 "				8 18 "	
	7 10 "				8 00 "	
	8 24 "				8 00 "	
	9 20 "				6 55 "	
	11 40 am				4 00 pm	
2 17 am		3 09 pm		1 17 am		3 26 pm
8 56 "		4 50 "		11 36 pm		1 00 "
1 28 "		6 33 "		10 35 "		12 07 "
6 46 "		6 38 "		10 30 "		12 01 pm
6 50 "		6 38 "		8 30 "		11 48 am
7 00 "		7 05 "		8 54 "		10 38 "
9 25 am		7 36 pm		8 20 pm		10 47 am
10 55 "				8 25 pm		8 10 am
11 25 pm				9 40 "		7 16 "
				9 10 pm		6 45 am
				7 49 pm		9 44 am
10 37 am				8 45 pm		8 30 am
8 45 am				4 40 pm		7 20 am
8 30 am		8 50 pm		7 00 pm		9 10 am
1 41 pm						6 25 am
7 20 am						5 30 pm

N. Branching connections on Sundays. * Runs daily, Sundays included. † Refreshment Stations.
 P. or Sleeping Cars on Trains so marked. ‡ Sundays only.
 Time of connections with foreign lines not guaranteed.

CANADIAN PACIFIC RAILWAY

500 LINE

Boston, Montreal, St. Paul and Minneapolis

READ DOWN.		VIA S. S. MALLEE		RAILWAY		READ UP.	
7 00 pm		Lawtonville	Ar	B. & N. Rd.		5 30 am	
6 50 "		"	"	"		4 37 "	
7 18 "		"	"	"		7 25 "	
8 20 "		"	"	Concord Road		7 00 "	
8 51 "		"	"	Manchester		6 30 "	
9 30 pm		Concord	Ar	B. & M. Rd.		5 15 am	
8 45 am		Portland	Ar	W. C. H. Ry.		8 40 am	
12 55 pm		Ledyards	Ar	B. & M. Rd.		1 50 am	
3 10 am		Newport	Ar	C. P. Ry.		10 25 pm	
5 30 am		Haltex	Ar	L. C. Ry.		11 30 pm	
11 55 am		Moneton	"	"		5 30 "	
3 00 pm		St. John, N. B.	"	N. B. Ry.		2 10 "	
1 55 am		Shoebrooke	Ar	"		7 30 pm	
6 25 am		St. John, N. B.	Ar	"		4 13 pm	
10 03 pm		Quebec	Ar	"		6 30 am	
10 00 am		Montpl. Windor St.	Ar	CANADIAN		3 30 pm	
7 45 am		Prescott	"	PACIFIC		4 00 pm	
7 53 am		Ottawa	"	RAILWAY		11 35 am	
6 00 am		Brockville	"	"		2 25 pm	
2 55 pm		Carleton Place	"	"		10 20 am	
4 26 am		Peterboro	"	"		11 40 am	
5 50 "		Owen Sound	"	"		11 20 am	
8 50 "		Orangeville	"	"		8 20 am	
8 25 "		Carleton Place	"	"		6 57 pm	
8 15 am		Toronto	Ar	G. T. Ry.		7 35 pm	
11 05 pm		North Bay	Ar	CANADIAN		2 00 pm	
2 50 am		Sudbury	Ar	PACIFIC		10 50 pm	
6 25 "		Algonia	"	RAILWAY		6 50 "	
10 25 "		Sault St. Marie, Ont.	Ar	"		3 30 "	
10 15 "		Sault St. Marie, Mich.	Ar	Eastern Time		3 15 "	
9 45 am		Sault St. Marie, Mich.	Ar	Central Time		2 15 pm	
10 15 am		Sault St. Marie, Mich.	Ar	"		1 15 pm	
11 07 am		Lino River	"	"		12 46 pm	
11 53 am		Tromp Lake	"	"		11 54 am	
12 33 pm		Gileshurst	"	"		11 10 "	
1 28 "		Lake Lake	"	"		10 23 "	
2 28 "		Manitowish	"	"		9 24 "	
3 10 "		Van Winkle	"	"		8 43 "	
		Masonville	"	"		7 45 pm	
4 15 pm		Gladstone	Ar	"		7 45 am	
4 20 pm		Gladstone	Ar	"		7 40 am	
4 33 "		North Escoudou	"	"		7 25 "	
		Noahville	"	"			
6 50 "		Bohannonville	"	MINNEAPOLIS		6 35 "	
		Chippewagon	"	"		6 15 "	
9 49 "		Pondville	"	"		5 50 "	
1 2 13 "		Dunbar	"	ST. PAUL		5 28 "	
1 7 28 "		North Grandin	"	"		1 43 "	
		Atkins	"	"			
9 07 "		Garden	"	AND		3 38 "	
9 49 "		Leamington	"	"		3 35 "	
9 15 "		Blindford	"	"		3 14 "	
		Manitoulin	"	S. ST. MALLEE			
		Bradley	"	"			
11 33 pm		Frontier	"	RY.		1 47 am	
		Akenon	"	"			
1 23 am		Carleton	"	"		11 53 pm	
2 45 am		Carleton	"	"		10 53 pm	
		Turtle Lake	"	"			
		Nye	"	"			
7 10 am		St. Croix Falls	"	"		7 50 pm	
		Dresser June	"	"			
5 52 am		Bald Eagle June	"	"		8 05 pm	
		Carleton June	Ar	"			
7 25 am		St. Paul	Ar	"		8 40 pm	
6 45 am		Minneapolis	Ar	"		7 20 pm	

Trains via the Duluth, South Shore & Atlantic Ry. leave Sault Ste. Marie daily, except Sunday, at 6:30 am, for Westboro, Munising, Marquette, Humboldt, Republic, Houghton, Calumet, Nestorria, Thoniston, Saxon, Superior and intermediate points to Duluth.

Returning, trains leave Duluth for above-named places at 6:40 am, daily, arriving Sault Ste. Marie at 7:55 am, the following day.

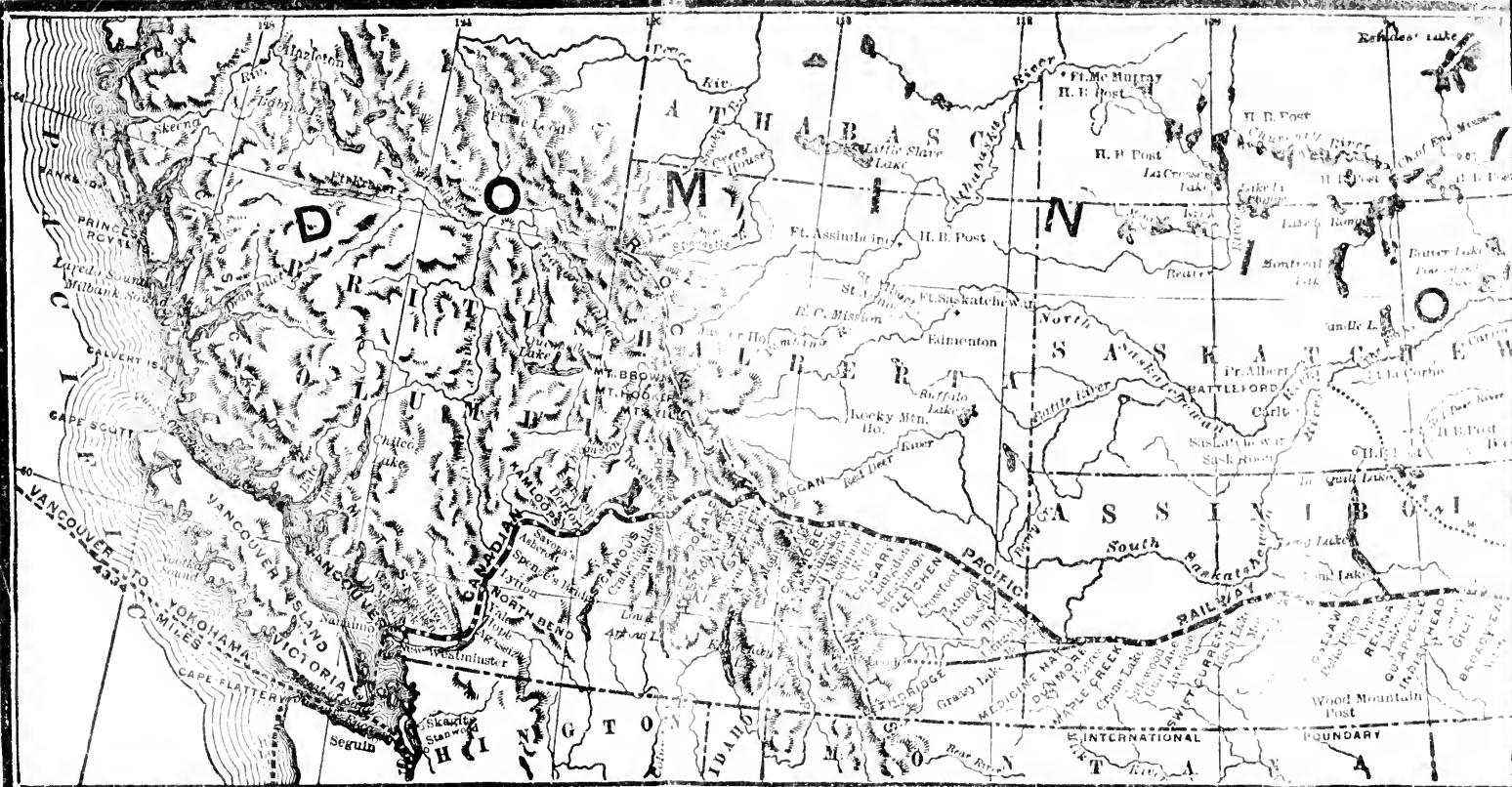
Trains east of Sault Ste. Marie run on Eastern Standard Time; west of Sault Ste. Marie on Central Standard Time, or one hour later than Eastern Time.

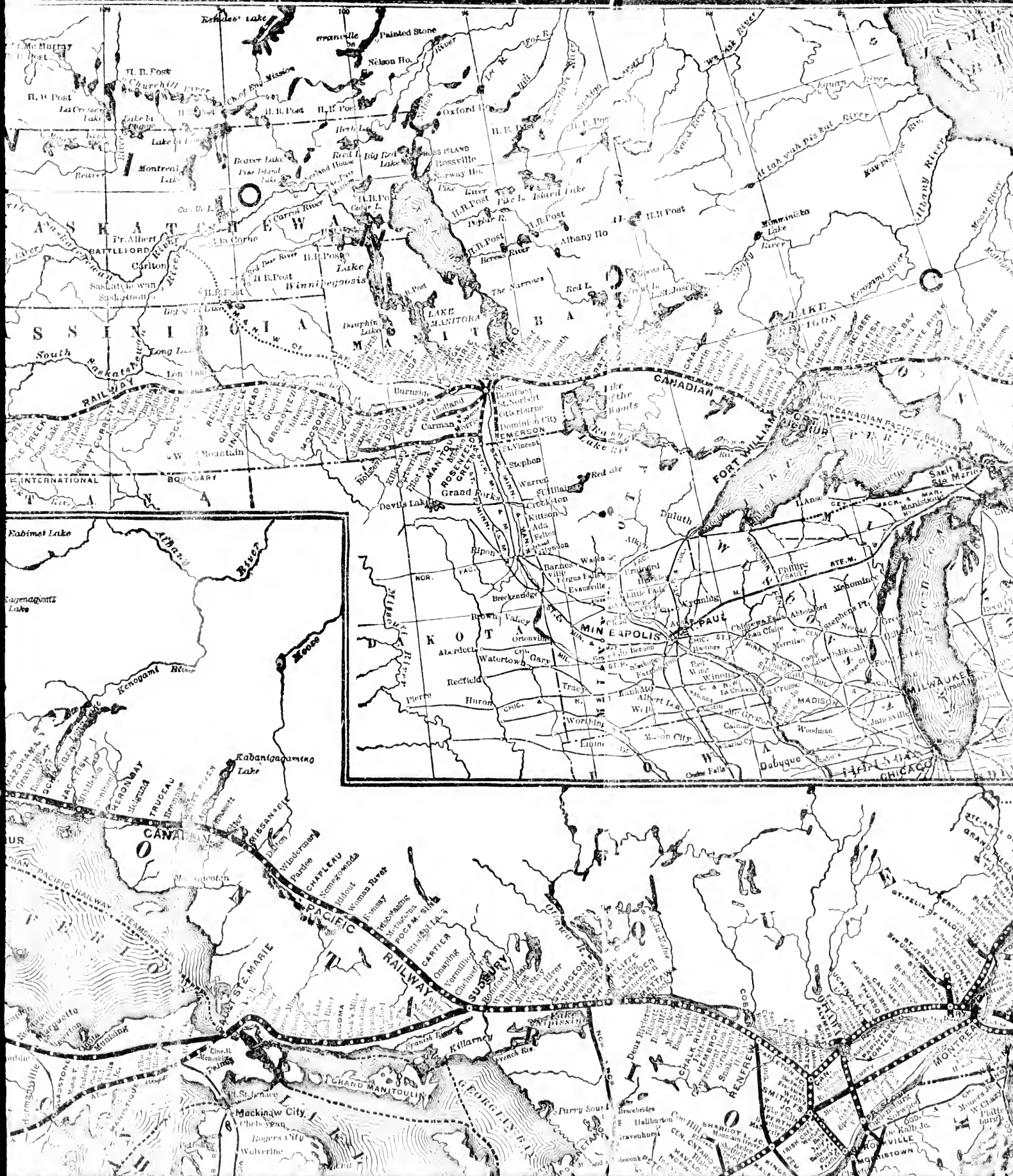
Refreshment Stations: * Daily. † Flag Stations.

Timing Cars are run through trains west of Ottawa. Time of and connections with foreign lines not guaranteed.

Trains run daily between Boston, Montreal, St. Paul and Minneapolis.







Map of the Great Lakes region showing provinces and territories: **ALBERTA**, **SASKATCHEWAN**, **MANITOBA**, **ONTARIO**, **QUEBEC**, **NEW BRUNSWICK**, **NOVA SCOTIA**, **PELTON**, **NEWFOUNDLAND**, **PRINCE EDWARD ISLAND**, **NEW BRUNSWICK**, **NOVA SCOTIA**, **PELTON**, **NEWFOUNDLAND**, **PRINCE EDWARD ISLAND**.

Map of the Great Lakes region showing major cities and towns: **Winnipeg**, **Brandon**, **Regina**, **Saskatoon**, **Calgary**, **Edmonton**, **Winnipeg**, **Brandon**, **Regina**, **Saskatoon**, **Calgary**, **Edmonton**, **Winnipeg**, **Brandon**, **Regina**, **Saskatoon**, **Calgary**, **Edmonton**.

Map of the Great Lakes region showing major cities and towns: **Toronto**, **Ottawa**, **Montreal**, **Quebec**, **Kingston**, **Hamilton**, **London**, **Windsor**, **St. Catharines**, **Niagara Falls**, **Toronto**, **Ottawa**, **Montreal**, **Quebec**, **Kingston**, **Hamilton**, **London**, **Windsor**, **St. Catharines**, **Niagara Falls**.

Map of the Great Lakes region showing major cities and towns: **Thunder Bay**, **Sault Ste. Marie**, **Kenora**, **Fort Frances**, **Thunder Bay**, **Sault Ste. Marie**, **Kenora**, **Fort Frances**.

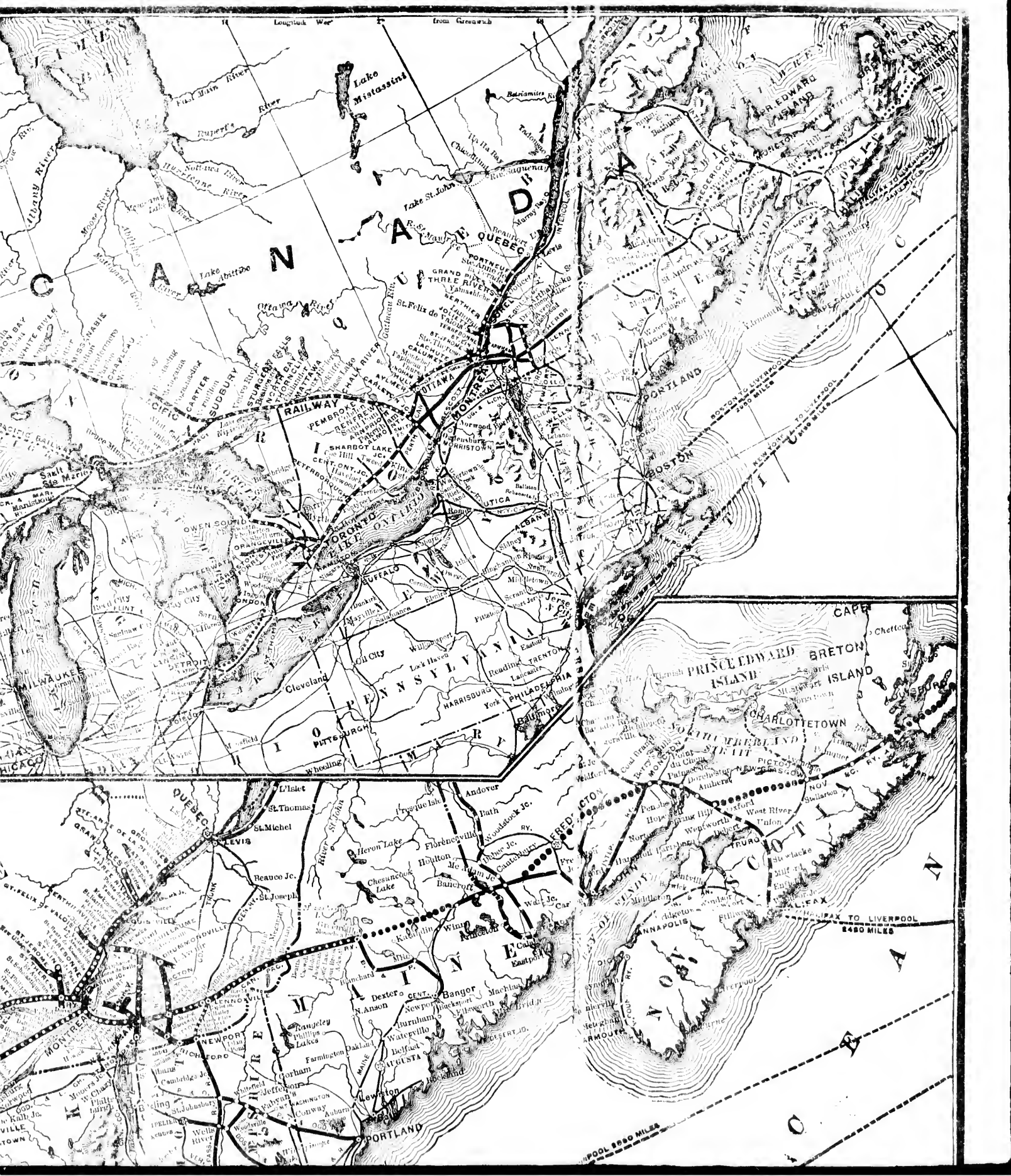
Map of the Great Lakes region showing major cities and towns: **Duluth**, **Superior**, **Sault Ste. Marie**, **Marquette**, **Duluth**, **Superior**, **Sault Ste. Marie**, **Marquette**.

Map of the Great Lakes region showing major cities and towns: **Chicago**, **Indianapolis**, **St. Louis**, **St. Paul**, **Chicago**, **Indianapolis**, **St. Louis**, **St. Paul**.

Map of the Great Lakes region showing major cities and towns: **St. Ignace**, **St. Joseph**, **St. Charles**, **St. Ignace**, **St. Joseph**, **St. Charles**.

Map of the Great Lakes region showing major cities and towns: **St. Ignace**, **St. Joseph**, **St. Charles**, **St. Ignace**, **St. Joseph**, **St. Charles**.

Map of the Great Lakes region showing major cities and towns: **St. Ignace**, **St. Joseph**, **St. Charles**, **St. Ignace**, **St. Joseph**, **St. Charles**.



Longitude West from Greenwich

CANADA

QUEBEC

OTTAWA

TORONTO

PENNSYLVANIA

PHILADELPHIA

NEW YORK

BOSTON

PORTLAND

PRINCE EDWARD ISLAND

BRETON ISLAND

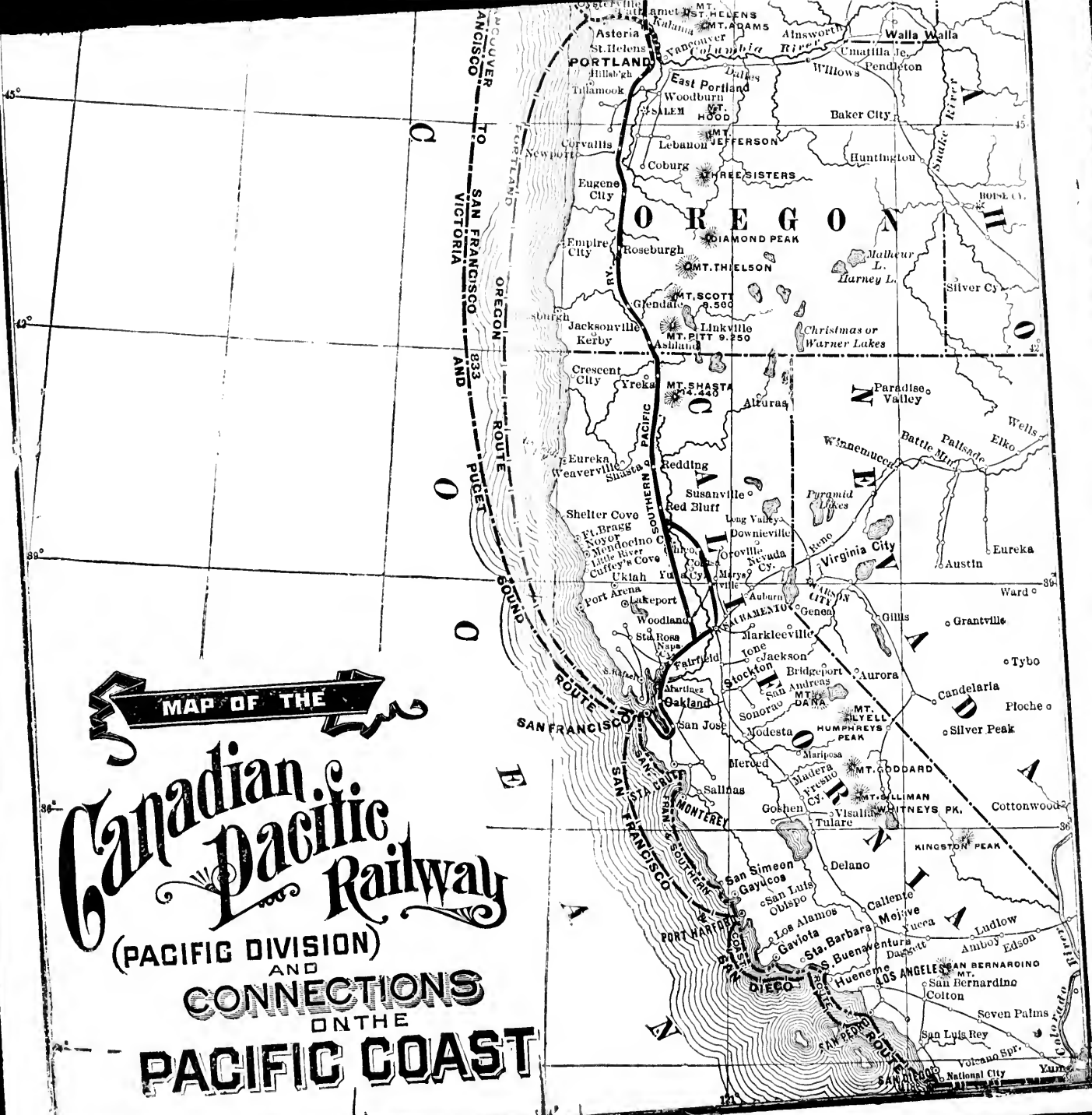
CHARLOTTETOWN

ANNAPOLIS

LIVERPOOL

BOSTON TO LIVERPOOL 2500 MILES

LIVERPOOL 2880 MILES

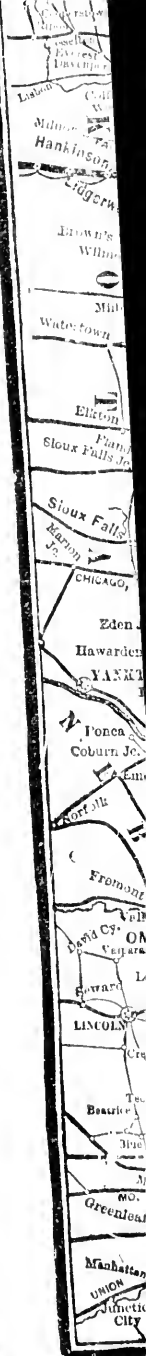


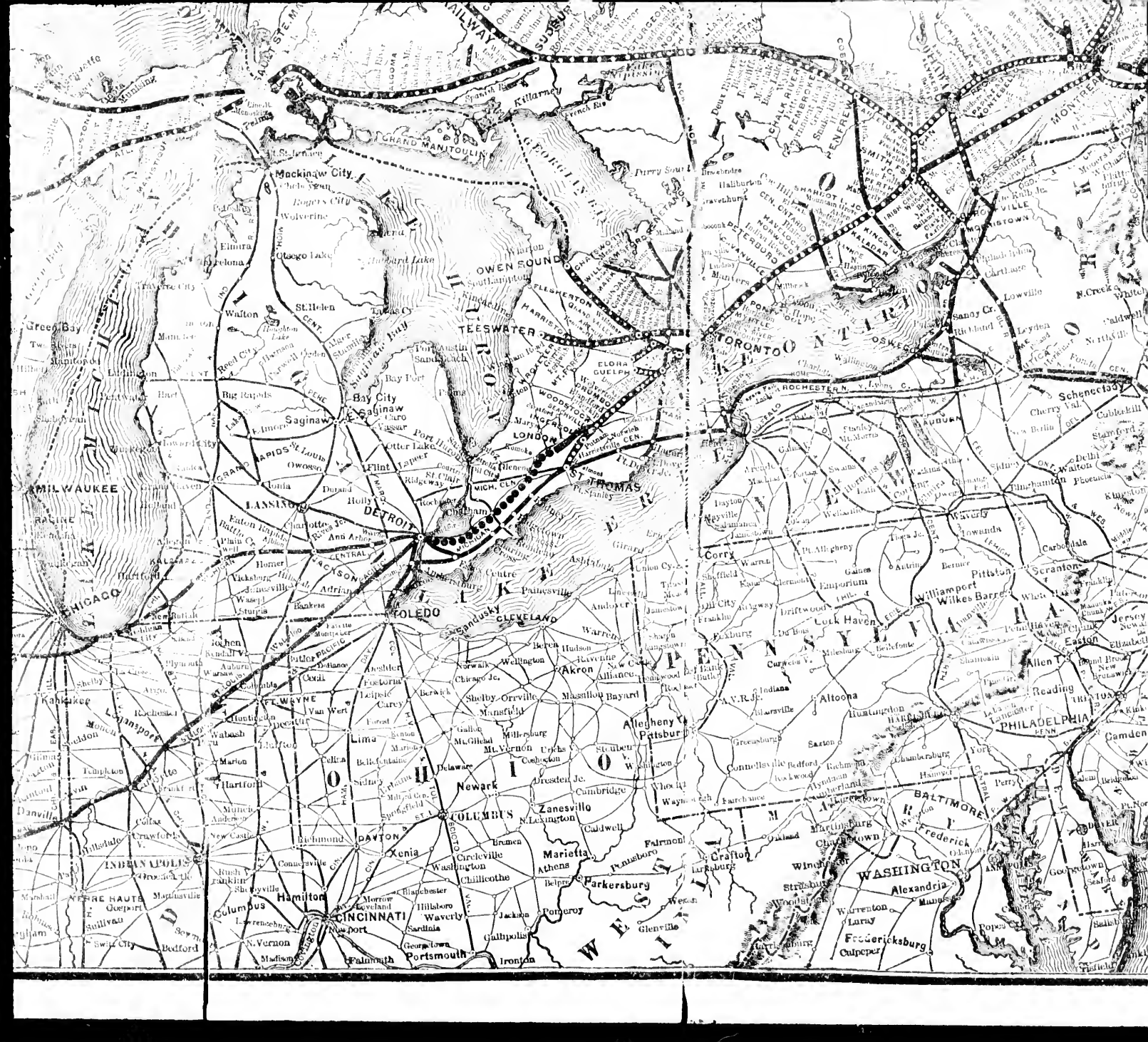
MAP OF THE

Canadian Pacific Railway

(PACIFIC DIVISION)
AND
CONNECTIONS
ON THE

PACIFIC COAST







Map of
THE
Canadian Pacific
RAILWAY
AND
ITS
CONNECTIONS.

Rossvyrd
Barnley
Reahurst
Carberry
Grandon
Leiswood
Yrden
Moosomin
Qu'Appelle
Swift Current
Leithbridge
Calgary
Steamers
Wanloops
Ashecroft
Spence's Bridge

PACIFIC COAST CONNECTIONS

South Bound Read down	INTENDED S.S. SAILINGS PORTS	NORTH BOUND Read up
Daily 2:30 pm Lv VANCOUVER, B.C. 6:00 a.m. Ar 7:50 pm Ar Victoria, B.C. 3:50 a.m. Lv		9:00 am daily ex Mon. 1:00 am daily ex Mon.
Daily 1:00 pm Lv Victoria, B.C. 9:00 a.m. Ar		6:00 am 2:30 pm
Daily ex Sun. 6:00 am Ar SAN FRANCISCO, Cal. Lv		9:10 am
Daily ex Sun. 3:15 am Ar Port Townsend, W.T. & Ar 4:30 pm Ar Seattle, W.T. & Ar 9:00 pm Ar TACOMA, W.T. & Ar		5:30 pm daily ex Sun. 2:00 pm daily ex Sun. 9:45 am daily ex Sun. 7:00 am daily ex Sun.
Mon. & Thur. 2:15 pm Lv VANCOUVER, B.C. 6:00 a.m. Ar 3:30 Ar Port Townsend 11:00 pm Lv Port Townsend		6:00 pm Wed. & Sat. 1:00 am Wed. & Sat. 3:00 am Wed. & Sat.
Tues. & Frid. 2:00 am Ar Seattle, W.T. & Ar 8:00 Ar TACOMA, W.T. & Ar		midnight Tues. & Frid. 5:00 pm Tues. & Frid.
7:50 am Lv TACOMA, W.T. & Ar 12:50 pm Ar Kalamia 3:15 Ar Portland, Ore. 1:00 Ar Albany 7:45 pm Ar Ashland 8:30 pm Ar Sisson, Cal. 3:40 am Ar Sacramento 7:15 am Ar SAN FRANCISCO, Cal.		6:10 am 7:30 pm 12:30 am 2:15 pm 10:00 pm 10:40 6:15 am 5:40 pm 11:15 am 11:00 pm 7:00 pm

Steamers leave Seattle:
1:30 a.m.
10:00 p.m.
11:00 p.m.
Westbound
Steamer "Dunsmuir"
Steamers for Alaska
 * Passengers destined for Vancouver, leaving Victoria Mondays will be forwarded via New Westminster, arriving Vancouver same hour as on other days.

West. Read Down Tues., Thurs., Sat.	MANITOBA & NORTH-WESTERN RAILWAY STATIONS	East Read Up Mons., Weds., Frie.
13:20	0 Lv WINDYBEG	16:00
16:00	56 Portage la Prairie	14:30
17:15	91 Gladstone	12:05
18:45	117 Neepawa	10:38
19:45	145 Ar Minnedosa	9:55
20:50	150 Ar Rapid City	8:30
21:30	171 Ar Shoal Lake	8:00
22:50 M	191 Ar Birtle	7:00
23:30 M	214 Ar Hirschthal	5:55 P
24:10 A	222 Ar Russell	5:15 L
24:49 X	236 Ar Langenburg	4:45 N

NORTH-WEST COAL & NAVIGATION CO.

Read Down	MIS STATIONS	Read Up
17:15	0 Lv DUNSMUIR, B.C. Ar	16:05
19:45	32 Ar Windfield	13:55
21:30	56 Ar Grassy Lake	12:00
23:20	82 Ar Woonpecker	9:55
1:15	109 Ar Leithbridge	8:00

Time of and connection with foreign lines not guaranteed. * Refreshment Stns
 L Wednesdays and Fridays only. J Tuesdays only. I Wednesdays only.
 M Tuesdays and Thursdays only. N Mondays only. X Saturdays only.

South Bound Read down	INTENDED S.S. SAILINGS PORTS	NORTH BOUND Read up
Daily 2:30 pm Lv VANCOUVER, B.C. 6:00 a.m. Ar 7:50 pm Ar Victoria, B.C. 3:50 a.m. Lv		9:00 am daily ex Mon. 1:00 am daily ex Mon.
Daily 1:00 pm Lv Victoria, B.C. 9:00 a.m. Ar		6:00 am 2:30 pm
Daily ex Sun. 6:00 am Ar SAN FRANCISCO, Cal. Lv		9:10 am
Daily ex Sun. 3:15 am Ar Port Townsend, W.T. & Ar 4:30 pm Ar Seattle, W.T. & Ar 9:00 pm Ar TACOMA, W.T. & Ar		5:30 pm daily ex Sun. 2:00 pm daily ex Sun. 9:45 am daily ex Sun. 7:00 am daily ex Sun.
Mon. & Thur. 2:15 pm Lv VANCOUVER, B.C. 6:00 a.m. Ar 3:30 Ar Port Townsend 11:00 pm Lv Port Townsend		6:00 pm Wed. & Sat. 1:00 am Wed. & Sat. 3:00 am Wed. & Sat.
Tues. & Frid. 2:00 am Ar Seattle, W.T. & Ar 8:00 Ar TACOMA, W.T. & Ar		midnight Tues. & Frid. 5:00 pm Tues. & Frid.
7:50 am Lv TACOMA, W.T. & Ar 12:50 pm Ar Kalamia 3:15 Ar Portland, Ore. 1:00 Ar Albany 7:45 pm Ar Ashland 8:30 pm Ar Sisson, Cal. 3:40 am Ar Sacramento 7:15 am Ar SAN FRANCISCO, Cal.		6:10 am 7:30 pm 12:30 am 2:15 pm 10:00 pm 10:40 6:15 am 5:40 pm 11:15 am 11:00 pm 7:00 pm

Manitoba & North-Western Railway
 * Passengers destined for Vancouver, leaving Victoria Mondays will be forwarded via New Westminster, arriving Vancouver same hour as on other days.

North-West Coal & Navigation Co.
 Time of and connection with foreign lines not guaranteed. * Refreshment Stns
 L Wednesdays and Fridays only. J Tuesdays only. I Wednesdays only.
 M Tuesdays and Thursdays only. N Mondays only. X Saturdays only.

