

451

4-1

THE
Prince Edward Island
ALMANAC
AND
Miscellaneous Directory
1900



Printed and Published by

Murley & Carnhum

STEAM PRINTERS AND BOOKBINDERS

72 Queen Street

Charlottetown

Post Office Box 72

PRICE 15 CENTS

Fire Insurance Life Insurance

The Royal Fire Insurance Co. of Liverpool
The Sun Fire Office of London
The Phenix Insurance Co. of Brooklyn
The Mutual Life Insurance Co. of N. Y.

Combined Assets of above Companies

THREE HUNDRED AND FIFTY MILLION DOLLARS

(350,000,000.00)

LOWEST RATES

PROMPT SETTLEMENTS

Your Patronage Respectfully Solicited

JOHN MACEACHERN

QUEEN STREET, CHARLOTTETOWN

AGENT

UP-TO-DATE

ARTISTIC TAILORING

-BY-

DANIEL McLAREN

Graduate from the firm of the late C. E. Robertson

Perfect Fits Guaranteed, with quick despatch

Why buy imported clothing when twice the wear can be obtained from HOME-MADE? Half the price being saved by being well-made, well-fitting, and well-trimmed.

Try us and we will convince you

Repairing and Pressing done in first-class Style

Kent Street, Charlottetown, P. E. Island

RARE
AY
420
PYPY
1900

Try our "Diamond" Shoe Dressing. 15cts. a bottle
R. K. Jost, Stamper's Corner.

1900]

THE P. E. ISLAND ALMANAC

1

THE MERCHANTS BANK

—OF—

PRINCE EDWARD ISLAND

HEAD OFFICE, CHARLOTTETOWN, P. E. I.

DIRECTORS :

BENJAMIN HEARTZ, President	W. A. WEEKS
L. L. BEER, Vice-President	ARTHUR PETERS
HON. SAMUEL PROWSE	J. M. DAVISON, Cashier

AGENCIES

ALBERTON, P. E. ISLAND	C. J. STEWART, Agent
MONTAGUE, P. E. ISLAND	J. H. McQUAID, "
SOURIS, P. E. ISLAND	W. E. McEIE, "
SUMMERSIDE, P. E. ISLAND	J. F. McMILLAN, "

FOREIGN AGENTS

LONDON—*The London City and Midland Bank, Limited*
BOSTON—*The National Shawmut Bank*
MONTREAL, ST. JOHN and HALIFAX—*The Bank of Montreal*

Collections made on the most reasonable terms and promptly remitted for.

Deposits received and interest allowed at best current rates.



SUNNYSIDE, QUEEN SQUARE

TIME-KEEPING WATCHES

If in need of a good reliable watch see our stock and be convinced that we can show you a fine stock and give you good value.

ALL REPAIRS GUARANTEED

G. H. TAYLOR

Buy Carpets at Prowse Bros.

HYNDMAN & CO.

Hyndman

General Insurance Agents

33 Queen Street, Charlottetown

**Fire, Life, Marine, Accident,
Sickness & Plate Glass Insurance**

Representing

*No. 10 British and Mercantile Fire Insurance
Company, Established 1809*

Phoenix of London Fire Office, Established 1782

Union Assurance Society, Established 1714

Standard Life of Edinburgh, Established 1825

General Marine of Trieste

Canada Accident Assurance Company

Insurance placed at Lloyd's, London

**Combined Assets over Two
Hundred Million Dollars**

ABSOLUTE SECURITY

PROMPT PAYMENT

Buy Clothing at Prowse Bros.

Worth the price and more—our men's \$3.00 Boots
R. K. JOST,—Stamper's Corner

1900]

THE P. E. ISLAND ALMANAC

3



Beautiful Birthday
and other Rings,
Brooches, Watches,
Bracelets, Studs,
and other Jewelry
suitable for presents

Handsome and reliable Silverware in
*Cake Baskets, Baking Dishes, Butters, Pickles,
Sugars, Tea Sets, Bells, Spoons,
Knives, etc.*



Spectacles and Eyeglasses

Fitted where needed and fitted
true. A large stock of com-
fortable wearing frames to
select from

Watches and Jewelry repaired

Chronometers and fine Watches rated as we have an
observatory and ascertain true time by actual observation

E. W. TAYLOR

Victoria Jewelry Store

Nearly opposite Post Office, Charlottetown

Buy Dress Goods at Prowse Bros.

Our "Blucher" Shoe for ladies gives solid comfort.
R. K. Jost, Stamper's Corner.

4

THE P. E. ISLAND ALMANAC

[1900



D M	Day of Week	Sun		Dy's leng	Equation to app't time		Sun's Greenwich Mean noon	Hourly vari'n	Sun's semi-di- ameter
		rises	sets		Sun slow of clock	added Hourly vari'n			
1	Mon	7 49.4	21 8 32	8 5	23.94	1.130	8 22 40 8.7	16.49	16 17.5
2	Tues	49	22 33		56.84	1.111	33 19.7	17 61	.5
3	Wed	48	23 35	6	17 27	1.091	26 4 0	18.72	.4
4	Thur	48	24 36		43 29	1.069	18 21.8	19.82	.4
5	Fri	48	26 37	7	8 61	1.047	10 13.3	20.91	.4
6	Sat	48	27 39		33 45	1.023	1 38.9	21 99	.4
7	C	47	29 41		57.71	.998	21 52 38.6	23.05	.3
8	Mon	47	30 43	8	21 37	.972	43 12.8	24 11	.3
9	Tues	47	31 44		44 40	.946	33 21.8	25.16	.2
10	Wed	46	33 45	9	6 78	.919	23 5.9	26.19	.2
11	Thur	46	34 47		28 49	.891	12 25.4	27.21	.1
12	Fri	45	35 49		49 52	.862	1 29 6	28.22	.1
13	Sat	44	37 51	10	9 55	.833	20 49 51.8	29 21	.0
14	C	43	39 53		29 47	.803	37 59 2	30.19	16.9
15	Mon	42	40 54		48 37	.772	25 43 2	31.16	.8
16	Tues	42	41 57	11	6 53	.741	13 4 2	32.11	.7
17	Wed	41	42 59		23 94	.709	0 2 5	33 05	.7
18	Thur	40	43 9 1		40 69	.678	19 46 38.4	33 68	.6
19	Fri	39	44 4		56 50	.646	32 52 2	34 89	.4
20	Sat	38	45 6	12	11 64	.614	18 44 3	35 79	.3
21	C	37	47 9		26 00	.582	4 14 9	36 67	.2
22	Mon	36	49 11		39 59	.550	18 49 24.5	37 54	.1
23	Tues	35	50 13		52 39	.517	34 13 4	38 40	.0
24	Wed	34	51 15	13	4 40	.484	18 42 0	39 24	15.8
25	Thur	33	53 18		15 62	.451	2 50 7	40 06	.7
26	Fri	32	54 21		26 03	.418	17 46 39.9	40 86	.5
27	Sat	31	55 24		35 64	.384	30 10 0	45 65	.4
28	C	30	57 27		44 43	.350	13 21 5	42 41	.3
29	Mon	29	59 30		52 41	.315	16 56 14 8	43 16	.1
30	Tues	28 5	0 32		39 57	.281	38 50 2	43 90	.0
31	Wed	27	2 35	14	5 91	.247	21 8 3	44 61 16	14 8

FRED. W. HYNDMAN

General Insurance Agent

SEE PAGE 2

Buy Carpets at Prowse Bros.

Rubbers, the best makes, at R. K. Jost's Stampers' Corner

1900]

JANUARY

MOON'S CHANGES

- New Moon, 1st, 6h. 41m. a. m.
- ☾ First Quarter, 7th, 9h. 52 1/2m. p. m.
- Full Moon, 15th, 11h. 29 1/2m. a. m.
- ☾ Last Quarter, 23rd, 3h. 54m. p. m.
- New Moon, 30th, 5h. 34 1/2m. p. m.

PERIGEE
3rd day, 9h, a. m.

APOGEE
19th day, 9h, a. m.

PERIGEE
31st day, 4h, p. m.

DECLINATION

0° 00' 00" 5th, 7 p. m.
N 23° 53' 12th, 11 a. m.
0° 00' 00" 19th, 9 p. m.
S 23° 17' 27th, 4 a. m.

D M	Sundays, &c.	MOON'S RISES		
		morn	morn	evening
1	Circumcision	7 43	9 25	11 14
2		8 28	10 14	12 3
3		9 4	11 32	0 1
4		9 35	0 16	0 43
5		10 2	0 54	1 20
6	Epiphany (Old Christmas Day)	11 54	1 32	1 58
7	1st Sunday after Epiphany	even 12 1	2 22	2 48
8		1 10	3 19	3 44
9		2 32	4 36	5 2
10		3 41	5 59	6 26
11		4 43	7 20	7 47
12		5 40	8 17	8 44
13		6 29	9 7	9 34
14	2nd Sunday after Epiphany	7 10	9 51	10 17
15		7 41	10 48	11 12
16		8 9	11 24	11 47
17		8 34	11 37	11 59
18		8 56	0 16	0 37
19		9 17	0 47	1 8
20		10 11	1 37	1 57
21	3rd Sunday after Epiphany	11 15	1 51	2 12
22		12 19	2 30	2 52
23		morn 1 23	3 15	3 38
24		2 32	4 26	4 51
25		3 23	5 30	5 57
26		4 20	6 58	7 27
27		5 30	8 18	8 48
28	4th Sunday after Epiphany	6 16	9 11	9 41
29		7 1	9 56	10 27
30		7 20	10 38	11 7
31		7 42	10 51	11 25

The Publishers of the Prince Edward Island Almanac, wish its readers a very "Happy New Year"

Buy Hats and Caps at Prowse Bros.

Felt Slippers, warm and comfortable, at R. K. Jost's, Stamper's Corner



D M	Day of Week	Sun		Dy's leng	Equation add.d to app't Sun slow of clock			Hour- ly vari'n	Sun's Decl'n Greenwich Mean Noon	Hour- ly vari'n	Sun's semi-di- ameter
		rises	sets		m	sec	sec				
1	Thur	7	26 5	3 9	38	S14	11.43	0.213	S16 3 9.4	45.30	16 .7
2	Fri		25 4	4 41			16.12	.178	15 44 54.1	45.98	.5
3	Sat		24 5	4 44			19.98	.144	26 22.7	46.65	.3
4	C		23 6	4 47			23.03	.110	7 35 5	47.29	.1
5	Mon		21 8	4 49			25.27	.076	14 48 33.2	47.91	.0
6	Tues		20 9	5 52			26.70	.043	29 16.1	48.52	13.8
7	Wed		18 10	5 55			27.33	.010	9 44.6	49.11	.6
8	Thur		17 12	5 58			27.17	.023	13 49 59.1	49.68	.4
9	Fri		16 14	10 1			26.33	.055	30 0.1	50.24	.3
10	Sat		14 15	4			24.52	.087	9 48.0	50.77	.1
11	C		12 17	8			22.05	.118	12 49 23.2	51.29	12.9
12	Mon		11 19	11			18.85	.149	28 46.0	51.80	.7
13	Tues		9 20	14			14 92	.179	7 57.0	52.29	.5
14	Wed		7 22	17			10.28	.208	11 46 56.5	52.76	.3
15	Thur		6 23	20			4.94	.237	25 44.8	53.21	.0
16	Fri		4 24	23	13	58.93		.264	4 22.3	53.65	11.8
17	Sat		2 26	26			52.26	.291	10 42 40.4	54.08	.6
18	C		1 27	28			44.96	.317	21 6.6	54.49	.4
19	Mon	6	59	29	31		37.03	.343	9 59 14.0	54.88	.2
20	Tues		57	30	34		28.50	.368	37 12.2	55.26	10.9
21	Wed		56	32	37		19.39	.391	15 1.5	55.62	.7
22	Thur		54	33	41		9.71	.415	8 52 42.4	55.96	.4
23	Fri		50	34	45	12	59.48	.438	30 15.3	56.29	.2
24	Sat		50	36	52		48.71	.460	7 40.6	56.59	.0
25	C		48	38	56	12	37.42	.481	7 44 58.7	56.88	9.7
26	Mon		43	42	59	12	25.63	.502	22 10.0	57.15	9.4
27	Tues		41	43	11 2		13.34	.522	6 59 15.0	57.41	.2
28	Wed	6	39 5	45	5	S12	0.58	0.541	S 6 36 14.1	57.64	16 .0

E. W. TAYLOR

Watchmaker and Jeweler

SEE PAGE 3

Buy Gent's Furnishings at Prowse Bros.

Our Shoes are money savers. R. K. Jost, Stamper's Corner

1900]

FEBRUARY

7

MOON'S CHANGES

- ☽ First Quarter, 6th, 0h, 10.6m, a. m.
- Full Moon, 14th, 5h, 12.8m, a. m.
- ☾ Last Quarter, 22nd, 8h, 56.7m, a. m.
- New Moon, 29th, 3h, 37.7m, a. m.

APOGEE
15th day, 5h. p. m.

DECLINATION

0° 00' 00" 2nd, 5 a. m.
N 22 57 2 8th, 5 p. m.
0 00 00 16th, 4 a. m.
S 22 48 3 23rd, 12 a. m.

D M	Sundays, &c.	MOON Rises		High Water Charlottetown	
		morn	even	morn	evening
1		8 3		11 16	11 44
2		8 34		0 0	0 22
3		9 52		0 39	1 6
4	5th Sunday after Epiphany	11 7		1 8	1 42
5		11 21		2 2	2 29
6		even 1 31		2 56	3 23
7		2 37		4 4	4 31
8		3 36		5 15	5 42
9		4 27		6 55	7 21
10		5 8		7 33	8 10
11	Septuagesima Sunday	5 43		8 47	9 11
12		6 14		9 16	9 39
13		6 37		10 4	10 27
14		7 2		10 43	11 4
15		7 23		11 15	11 36
16		8 5		11 42	12 2
17		9 6		0 13	0 34
18	Sexagesima Sunday	10 9		0 36	1 7
19		11 11		1 17	1 40
20		12 16		1 58	2 22
21		morn 1 18		2 32	2 57
22		2 35		3 36	4 3
23		3 5		4 41	5 9
24		3 56		6 30	6 59
25	Quinquagesima Sunday	4 48		7 39	8 8
26		5 16		8 51	9 20
27		5 57		9 42	10 10
28	Ash Wednesday	6 9		10 55	11 0

Murley & Garnhum

Steam Printers & Bookbinders

Lower Queen Street, P. O. Box 72, Charlottetown

Buy all kinds of Dry Goods at Prowse Bros.

Save money by buying your Boots from us. R. K. Jest, Stamper's Corner

8

THE P. E. ISLAND ALMANAC

[1900



D M	Day Week	Sun		Dy's leng	Equation added to app't time			Sun's Decl'n Greenwich Mean Noon	Hourly vari'n	Sun's semi-di- ameter
		rises	sets		Sun slow of clock	Hourly vari'n	sec			
1	Thur	6 38	5 46	11 8	11 47.36	0	.560	S 6 13 7 7	57.86	16 8.7
2	Fri	36 47	12		23.69		.579	5 49 56.2	58.07	.5
3	Sat	34 49	15		13.59		.596	26 40.1	58.26	.2
4	C	32 50	18		5.08		.613	3 19.6	58.43	.0
5	Mon	30 52	22		10 50.17		.629	4 39 55.3	58.58	.7
6	Tues	28 53	25		34.88		.646	16 27.5	58.71	.5
7	Wed	26 54	28		19.24		.659	3 52 56.5	58.84	.2
8	Thur	24 56	31		3.25		.673	22 22.9	58.94	.6
9	Fri	22 57	35		9 46.94		.686	5 47.0	59.03	.7
10	Sat	20 5 59	39		30.34		.698	2 42 9.1	59.10	.4
11	C	18 6 0	41		13.45		.709	18 29.6	59.16	.2
12	Mon	16 1 45	8 56.31		8 56.31		.719	1 54 49.0	59.20	.5
13	Tues	14 3 48	38.93		38.93		.729	31 5.4	59.23	.6
14	Wed	13 4 51	21.34		21.34		.737	7 25.4	59.24	.4
15	Thur	11 5 55	3.56		3.56		.744	0 43 43.2	59.24	.1
16	Fri	9 6 58	7 45.62		7 45.62		.751	S 20 1 1	59.23	4.8
17	Sat	8 7 12	0 27.53		27.53		.756	N 3 40.5	59.20	.5
18	C	5 9 4	9.33		9.33		.760	27 21.3	59.16	.3
19	Mon	3 11 8	6 51.04		6 51.04		.764	0 51 1.1	59.11	.0
20	Tues	1 12 11	32.68		32.68		.766	1 14 39.4	59.05	3.7
21	Wed	5 59 13	14 14.28		14.28		.767	38 16.0	58.97	.4
22	Thur	57 15 18	5 55.86		5 55.86		.768	2 1 50.4	58.87	.1
23	Fri	55 16 21	37.44		37.44		.767	25 21.2	58.75	2.9
24	Sat	53 17 24	19.04		19.04		.766	48 51.2	58.63	.6
25	C	51 19 28	0.68		0.68		.764	3 12 17.0	58.49	.3
26	Mon	49 20 31	4 42.37		4 42.37		.761	39 39.1	58.33	.0
27	Tues	47 21 34	24.14		24.14		.758	58 57.2	58.15	1.7
28	Wed	45 22 37	5.19		5.19		.754	4 22 10.9	57.96	1.4
29	Thur	43 24 41	3 47.95		3 47.95		.749	45 19.9	57.75	1.2
30	Fri	42 25 44	30.04		30.04		.744	5 8 23.8	57.53	0.9
31	Sat	5 40 6 27	12 47 8		12.24	0	.738	N 31 22.1	57.30	16 0.6

McFARLANE, SON & HODGSON

Wholesale Stationers

SEE PAGE 38

Buy Carpets at Prowse Bros.

Our \$3.00 Men's Boots fits well, looks well, and wears well.—R. K. Jost.

1900]

MARCH

9

MOON'S CHANGES

- ☾ First Quarter, 7th, 9h, 46m, p. m.
- Full Moon, 16th, 0h, 23m, a. m.
- ☾ Last Quarter, 23rd, 9h, 48m, p. m.
- New Moon, 30th, 0h, 52m, p. m.

PERIGEE
1st day, 4h, a. m.
APOGEE
14th day, 5h, p. m.
PERIGEE
29th day, 3h, p. m.

DECLINATION
0° 00' 00" 1st, noon.
N 22 40 49 8th, 3 a. m.
0 00 00 15th, 10 a. m.
S 22 31 46.7 22nd, 6 a. m.
0 00 00 29th, 2 a. m.

D M	Sundays, &c.	MOON Rises		High Water Charlottetown	
		morn	even	morn.	evening
1	St. David's Day	6 27		10 40	11 13
2		7 24		11 1	11 29
3		8 34		11 36	0 3
4	1st Sunday in Lent	10 0		0 9	0 37
5		11 15		0 34	1 2
6		12 25	1 43	1 43	2 11
7		1 28	2 33	2 33	3 1
8		2 22	3 46	3 46	4 13
9		3 7	5 1	5 1	5 27
10		3 45	6 19	6 19	6 44
11	2nd Sunday in Lent	4 15	7 24	7 24	7 28
12		4 40	8 16	8 16	8 38
13		5 7	8 54	8 54	9 15
14		5 22	9 35	9 35	9 56
15		6 9	10 8	10 8	10 29
16		6 59	10 44	10 44	11 5
17	St. Patrick's Day	7 53	11 13	11 13	11 34
18	3rd Sunday in Lent	9 3	11 35	11 35	0 7
19		10 7	0 2	0 2	0 24
20		10 46	0 55	0 55	1 20
21		11 10	1 35	1 35	1 59
22		morn 1 6	2 16	2 16	2 42
23		1 57	3 15	3 15	3 43
24		2 41	4 39	4 39	5 7
25	Annunciation B. V. M. Lady	3 19	6 0	6 0	6 28
26	Day. 4th Sunday in Lent	3 44	7 20	7 20	7 45
27		4 23	8 30	8 30	8 57
28		4 43	9 24	9 24	9 51
29		6 8	10 4	10 4	10 31
30		6 33	11 0	11 0	11 7
31		7 31	11 20	11 20	11 27

If you want PRINTING of any kind, call on
MURLEY & GARNHUM

Lower Queen Street

Charlottetown

Post Office Box 73

Buy Hats and Caps at Prowse Bros.

Money back—if we cannot suit you in Boots and Shoes.
 E. K. JOST,—Stamper's Corner

10

THE P. E. ISLAND ALMANAC

[1900



D M	Day of Week	Sun		Dy's		Equation added to app't time		Sun's Decl'n Greenwich Mean Noon	Hourly vari'n	Sun's semi-di- ameter								
		rises	sets	leng	leng	Sun slow of clock	Hourly vari'n											
		h	m	h	m	m	sec	"	"	"								
1	C	5	38	6	28	12	56	S 2	54.61	0	.731	N	54	14.7	57.05	16	0.3	
2	Mon		36	29	53				37.15		.724		6	17	1.1	56.78		.1
3	Tues		34	31	57				19.87		.716		39	40.9	56.50	15	59.8	
4	Wed		32	32	13	0			2.78		.707		7	2	13.8	56.21		.5
5	Thur		30	33	3				1 45 91		.698		24	39.4	55.90		.3	
6	Fri		28	35	6				29 28		.688		46	57 4	55.58		.0	
7	Sat		26	36	9				12.89		.677		8	9	7.4	55.24		58.7
8	C		25	37	13				0 56.77		.666		31	9.2	54.88		.5	
9	Mon		23	39	16				40.93		.654		53	2 3	54.51		.2	
10	Tues		21	40	19				25.38		.641		9	14	46 4	54 14		57.9
11	Wed		19	41	22			Slow	10.15		.628		36	21 3	53.74		.7	
12	Thur		17	42	26			Fast	4.75		.614		57	46.5	53.34		.4	
13	Fri		15	44	28				19.31		.599		10	19	1.8	52.92		.1
14	Sat		14	45	31				33.49		.583		40	6.9	52.49		56.9	
15	C		12	46	34				0 47.28		.566		11	1	1.6	52.05		.6
16	Mon		10	48	38				1 0 67		.549		21	45 6	51.59		.3	
17	Tues		8	49	41				13.63		.531		42	18.4	51.12		.1	
18	Wed		7	50	44				26.14		.522		13	2	39.8	50.64		55.8
19	Thur		5	52	47				38.19		.492		22	49.5	50.15		.6	
20	Fri		3	53	50				49.77		.472		42	47.2	49.64		.3	
21	Sat		2	54	52				2 0.86		.452		13	2	32.5	49.11		.0
22	C		5	0	56	56			11.45		.451		22	5.0	48.58		54.8	
23	Mon		4	58	57	58			21.53		.409		41	24.4	48.02		.5	
24	Tues		57	58	14	0			31.10		.388		14	0	30.3	47.46		.3
25	Wed		55	6	59	3			40.14		.366		19	22.5	46.88		.0	
26	Thur		54	7	0	7			48.65		.344		38	0.6	46.28		53.8	
27	Fri		52	2	10				2 56.63		.321		14	56	24.2	45.67		53.5
28	Sat		51	4	13				3 4.08		.299		15	14	33.1	42.05		53.3
29	C		49	5	16				10.98		.276		32	26.8	44.41		15.1	
30	Mon		4	48	7	6	14	13	F 3 17.33	0	.253	N	15	5	05.1	43.76	15	52.8

FIRE

**GUARANTEE AND
ACCIDENT INSURANCE**

The Queen Insurance Company
 The Alliance Assurance Company of London, England
 The Lancashire Assurance Company of Manchester, England
 The London Guarantee and Accident Company of London, England

LOW RATES — — — PROMPT SETTLEMENTS

D. B. STEWART

OFFICE:—next Bank of Nova Scotia, Charlottetown General Agent for P. E. Island

Buy all kinds of Dry Goods at Prowse Brso.

Lamb's Wool Soles at R. K. Jost's, Stamper's Corner.

1900]

APRIL

, 11

MOON'S CHANGES

- ☽ First Quarter, 6th, 1h, 6m, p. m.
- ☾ Full Moon, 14th, 5h, 14m, p. m.
- ☾ Last Quarter, 22nd, 6h, 45m, a. m.
- New Moon, 28th, 9h, 34m, p. m.

APOGEE
11th day, 2h. a. m.

PERIGEE
26th day, 9h. p. m.

DECLINATION

N 22° 26' 14.3" 4th, 7 a. m.
0 00 00 11h, 4 p. m.
S 22 20 1.2 18th, 11 p. m.
0 00 00 25th, 11 a. m.

D M	Sundays, &c.	MOON		High Water Charlottetown	
		Rises			
			morn	morn	evening
1	5th Sunday in Lent		8 39	11 36	0 4
2			9 38	0 0	0 26
3			11 12	0 38	1 7
4			even 0 2	1 23	1 51
5			1 2	2 16	2 43
6			1 44	3 18	3 44
7			2 16	4 24	4 48
8	Palm Sunday		2 44	5 35	5 57
9			3 9	6 42	7 4
10			3 32	7 36	7 57
11			3 46	8 23	8 44
12			4 50	8 59	9 29
13	Good Friday		5 52	9 39	9 59
14			6 54	10 17	10 39
15	Easter Sunday		7 58	10 51	11 14
16			9 2	11 24	11 48
17			9 54	11 59	0 23
18			11 1	0 32	0 59
19			11 59	1 15	1 43
20			morn 0 38	2 2	2 29
21			1 15	2 55	3 22
22	Low Sunday		1 42	3 53	4 26
23	St. George's Day †		2 31	5 29	5 55
24			2 51	6 50	7 16
25			3 43	8 7	8 33
26			5 3	9 0	9 28
27			6 20	9 53	10 11
28			7 1	10 50	11 7
29	2nd Sunday after Easter		7 37	11 6	11 20
30			8 50	12 0	12 28

If you want BLANK BOOKS of any kind, call on

MURLEY & GARNHUM

Lower Queen Street,

Charlottetown,

P. O. Box 72

Buy Dress Goods at Prowse Bros.

Ladies' Gaiters with cord binding at R. K. Jost's, Stamper's Corner

12

THE P. E. ISLAND ALMANAC

[1900



D M	Day of Week	Sun				Dy's leng	Equation sub <trct </trct to app't time		Hourly vari'n	Sun's Decl'n Greenwich Mean noon			Hourly vari'n	Sun's semi-di- ameter		
		rises	sets	h	m		h	m		m	sec	°			'	"
1	Tues	4	46	7	7	14	21	F 3	23.13	0	.230	N 16	7	27.7	43.10	15 52.6
2	Wed	45	8	24					28.37	.207		24	34.2	42.43		.4
3	Thur	43	10	27					33.07	.184		41	24.3	41.74		.2
4	Fri	42	11	30					37.21	.161		57	57.6	41.04		.0
5	Sat	40	12	32					40.80	.138	17	14	14.0	40.32		51.7
6	C	39	13	34					43.84	.115		30	13.1	39.59		.5
7	Mon	38	15	37					46.32	.092		45	54.5	38.85		.3
8	Tues	37	16	39					48.24	.068	18	1	18.0	38.10		.1
9	Wed	35	17	41					49.60	.045		16	23.3	37.34		50.9
10	Thur	34	18	44					50.42	.022		31	10.2	36.57		.7
11	Fri	33	19	47					50.68	.001		45	38.4	35.78		.5
12	Sat	32	20	49					50.38	.024		59	47.5	34.98		.3
13	C	31	22	51					49.52	.048	19	13	37.5	34.18		.1
14	Mon	29	23	54					48.10	.072		27	8.1	33.37		.0
15	Tues	28	24	56					46.11	.095		40	18.9	32.54		49.8
16	Wed	27	25	14	58				43.56	.118		53	9.8	31.70		.6
17	Thur	26	26	15	0				40.45	.141	20	5	40.5	30.85		.4
18	Fri	24	27	2					36.79	.164		17	50.7	30.00		.2
19	Sat	23	29	4					32.57	.187		29	40.2	29.12		.0
20	C	23	30	6					27.80	.210		41	8.7	28.25		48.9
21	Mon	22	31	8					22.50	.232		52	15.9	27.36		.7
22	Tues	21	32	10					16.63	.253	21	3	1.6	26.46		.5
23	Wed	20	33	12					10.35	.274		13	25.6	25.55		.3
24	Thur	20	34	14				3	3.52	.295		23	27.7	24.63		.2
25	Fri	19	35	16				2	56.21	.314		33	7.5	23.70		.0
26	Sat	18	36	17					48.42	.333		42	25.0	22.76		47.9
27	C	18	37	19					40.21	.352		51	19.9	21.81		.7
28	Mon	17	38	21				2	31.55	.369		59	52.0	20.85		47.6
29	Tues	17	38	22					22.49	.386	22	8	1.2	19.90		47.5
30	Wed	16	39	23					13.03	.402		15	47.2	18.93		47.3
31	Thur	4	16	7	40	15	21	F 2	3.21	0	.417	N 22	23	9.8	17.96	15 47.2

EXAMINER PUBLISHING CO.

SEE PAGE 46

Buy Gent's Furnishings at Prowse Bros.

The right Boots at the right prices—R. K. Jost's, Stamper's Corner

1900]

MAY

13

MOON'S CHANGES

- ☾ First Quarter, 8th, 5h, 51m, a. m.
- Full Moon, 14th, 7h, 48m, a. m.
- ☾ Last Quarter, 21st, 6h, 42m, p. m.
- New Moon, 28th, 7h, 1m, a. m.

APOGEE
8th day, 6h, p. m.

PERIGEE
24th day, 10h, a. m.

DECLINATION

N 22° 17' 27.1" 1st, 5 p. m.
0 00 00 8th, 11 p. m.
S 22 15 51.5 16th, 5 a. m.
0 00 00 22nd, 6 p. m.
N 22 15 44.3 29th, 2 a. m.

D M	Sunday, &c.	MOON Rises		High Water Charlottetown	
		morn	even	morn.	evening
1		9 49		0 10	0 22
2		10 51		0 23	0 52
3		11 38		1 0	1 35
4		0 6	even	1 55	2 20
5		0 50		2 45	3 9
6	3rd Sunday after Easter	1 12		3 45	4 7
7		1 36		4 35	4 57
8		2 27		5 40	6 1
9		2 41		6 48	7 9
10		3 35		7 37	7 58
11		4 44		8 24	8 46
12		5 47		9 6	9 29
13	4th Sunday after Easter	6 52		9 46	10 10
14		7 53		10 27	10 53
15		8 54		11 5	11 32
16		9 39		11 40	0 8
17		10 37		0 19	0 47
18		11 19		1 03	1 31
19		11 54		1 47	2 14
20	Rogation Sunday	0 25	morn	2 33	2 59
21		0 45		3 33	3 58
22		1 30		4 52	5 17
23		2 45		6 20	6 46
24	Ascension Day. Birthday of	4 0		8 0	8 27
25	[Queen Victoria	5 6		8 33	9 1
26		6 29		9 26	9 55
27	5th Sunday after Easter	7 34		10 8	10 37
28		7 45		10 38	11 4
29		8 37		11 17	11 40
30		9 29		11 29	11 57
31		10 15		0 13	0 40

First-class work by first-class workmen at lowest prices

MURLEY & GARNHUM

Lower Queen Street

Charlottetown

Post Office Box 72

Buy Carpets at Prowse Bros.

No better value in Boots and Shoes than we offer—Try us.
 R. K. Jost, Stamper's Corner.

14

THE P. E. ISLAND ALMANAC

[1900



D M	Day of Week	Sun			Dy's leng	Equation subtr't to solar time		Sun's Decl'n Greenwich Mean Noon	Hour- ly vari'n	Sun's semi-di- ameter		
		rises	sets			Sun fast of clock	Hour- ly vari'n					
		h	m	h	m	m	sec	"	"	"		
1	Fri	4	16	7	41	15	25	F 1 53.03	0.431	N22 30 9.0	16.98	15 47.1
2	Sat		15	42	26			42.53	.444	36 44.5	15.99	.0
3	C		15	42	27			31.73	.456	42 56.2	15.00	46.9
4	Mon		14	43	28			20.64	.467	48 44.1	14.00	.8
5	Tues		14	44	29			9.30	.478	54 7.9	12.59	.7
6	Wed		14	44	30			0 57.71	.487	59 7.5	11.98	.6
7	Thur		14	45	31			45.91	.496	23 3 42.9	10.97	.5
8	Fri		13	46	32			33.90	.504	7 54.0	9.95	.4
9	Sat		13	46	33			21.72	.511	11 40.7	8.94	.3
10	C		13	47	33			Fast 9.38	.517	15 2.8	7.91	.2
11	Mon		13	47	34			Slow 3.10	.523	18 0.5	6.89	.1
12	Tues		13	48	34			Add 15.72	.528	20 33 6	5.87	.0
13	Wed		13	48	34			28.45	.532	22 42.2	4.84	.0
14	Thur		13	48	35			41.27	.536	24 26.0	3.81	45.9
15	Fri		14	49	35			0 54 16	.539	25 45.0	2.78	.8
16	Sat		14	49	35			1 7.11	.540	26 39.3	1.75	.8
17	C		14	49	35			20.09	.541	27 8.8	0.71	.7
18	Mon		14	49	35			33.08	.541	27 13.4	0.33	.6
19	Tues		14	50	35			46.05	.540	26 53.2	1.36	.6
20	Wed		15	50	35			58.99	.538	26 8.2	2.40	.5
21	Thur		15	50	35			2 11.86	.534	24 58.3	3.43	.5
22	Fri		15	50	34			24.64	.530	23 23.7	4.46	.5
23	Sat		16	50	34			37.31	.525	21 24.4	5.49	.4
24	C		16	50	34			49.84	.519	19 0.4	6.51	.4
25	Mon		16	50	33			3 2.20	.511	16 11.8	7.54	.4
26	Tues		17	49	33			14.37	.502	12 58.7	8.56	.4
27	Wed		18	49	33			S 3 26.33	.493	9 21.2	9.57	.3
28	Thur		18	49	31			3 38.04	.483	5 29 4	10.58	.3
29	Fri		19	49	30			49.49	.471	23 0 53.3	11.59	.3
30	Sat		4 19	49	15	29	S	4 0.04	0.458	N22 56 3.2	12.59	15 45.3

GEO. H. SIMMONS
 Manufacturer and Bottler of
 CARBONATED BEVERAGES

SEE PAGE 48

Buy Clothing at Prowse Bros.

We guarantee you the best value to be had in the Shoe line.
R. K. JOST,—Stamper's Corner

1900]

JUNE

15

MOON'S CHANGES

- ☽ First Quarter, 4th, 11h, 10m, p. m.
- Full Moon, 12th, 7h, 50m, p. m.
- ☾ Last Quarter, 19th, 5h, 9m, p. m.
- New Moon, 26th, 5h, 39m, p. m.

APOGEE
5th day, 12th noon

PERIGEE
18th day, 6h. p. m.

DECLINATION
 0° 00' 00" 5th, 6 a. m.
 S 22 16 6.6 12th, 1 p. m.
 0 00 00 18th, 12 p. m.
 N 22 15 57.6 25th, 11 a. m.

D M	Sundays, &c.	MOON		
		Rises	High Water Charlottetown	
		morn	morn	morn
1		10 43	1 1	1 25
2		11 3	1 27	1 51
3	Pentecost. Whit Sunday	11 38	2 12	2 34
4		even 0 5	2 56	3 17
5		0 29	3 43	4 4
6		1 30	4 36	4 57
7	Corpus Christe	2 31	5 40	6 1
8		3 32	6 52	7 14
9		4 38	7 45	8 9
10	Trinity Sunday	5 42	8 38	9 3
11		6 44	9 9	9 36
12		7 41	10 4	10 32
13		8 30	11 3	11 29
14		9 9	11 26	11 51
15		9 56	0 15	0 42
16		10 28	0 45	1 12
17	2nd Sunday after Pentecost]	10 51	1 28	1 54
18		11 26	2 10	2 36
19		morn 0 34	3 19	3 39
20	Accession Queen Victoria	1 48	4 28	4 54
21	Proclamation	3 1	5 27	5 54
22		4 18	7 16	7 34
23	3rd Sunday after Pentecost	5 23	8 20	8 47
24	Midsummer Day. St. John	6 25	9 6	9 34
25	Baptist]	7 18	9 50	10 18
26		7 46	10 26	11 2
27		8 4	11 0	11 21
28		8 44	11 34	11 59
29		9 14	11 59	12 16
30		9 40	12 22	12 45

*Do not throw away your MAGAZINES because the
 the leaves are separating; bring them to*

MURLEY & GARNHUM

and have them rebound as the books may become invaluable.

Lower Queen Street,

Charlottetown,

P. O. Box 72

Buy Hats and Caps at Prowse Bros.



D M	Day of Week	Sun		Dy's leng	Equation to app't Sun slow of clock		added time Hour- ly var'n	Sun's Greenwich Mean noon	Decl'n Hour- ly var'n	Sun's semi-di- ameter
		rises	sets		m sec	m sec				
1	C	4 20	7 48	15 28	S 4	11.47	0 .444	N 22 50 49.0	13.59	15 45.4
2	Mon	21	48	26		21.96	.429	45 11.1	14.58	.4
3	Tues	21	48	26		32.08	.414	39 9.4	15.56	.4
4	Wed	22	47	25		41.82	.397	32 44.2	16.54	.4
5	Thur	23	47	24		51.15	.380	25 55.7	17.51	.4
6	Fri	24	46	23	5	0.06	.362	18 44.0	18.47	.5
7	Sat	25	46	22		8.53	.344	11 9.2	19.43	.5
8	C	26	45	21		16.55	.325	3 11.6	20.38	.6
9	Mon	26	45	20		24.11	.305	21 54 51.4	21.32	.6
10	Tues	27	44	18		31.20	.285	46 8.8	22.25	.6
11	Wed	28	43	17		37.80	.265	37 3.9	23.17	.7
12	Thur	29	43	16		43.91	.244	27 36.9	24.09	.8
13	Fri	30	42	14		49.53	.224	17 47.9	25.00	.8
14	Sat	31	41	12		54.64	.202	7 37.3	25.90	.9
15	C	32	40	10		59.24	.181	20 57 5.2	26.79	46.0
16	Mon	33	39	8	6	3.31	.159	46 11.7	27.67	.0
17	Tues	34	38	6		6.85	.136	34 57.2	28.53	.1
18	Wed	35	37	4		9.84	.113	23 21.8	29.41	.1
19	Thur	36	36	2		12.29	.090	11 25.8	30.26	.2
20	Fri	37	35	0		14.18	.067	19 59 9.4	31.10	.3
21	Sat	38	34	14 58		15.51	.044	46 32.9	31.94	.4
22	C	39	33	55		16.27	.020	33 36.6	32.76	.5
23	Mon	40	32	53		16.45	.005	20 20.8	33.56	.6
24	Tues	41	31	51		16.04	.029	6 45.7	34.36	.7
25	Wed	42	30	48		15.89	.054	18 52 51.5	35.15	.8
26	Thur	43	28	45		13.80	.079	38 38.7	35.92	.9
27	Fri	45	27	43		11.72	.104	24 7.4	37.68	47.0
28	Sat	46	20	41		8.63	.130	9 18.1	37.43	.1
29	C	47	25	38		5.01	.156	17 54 11.1	38.16	.3
30	Mon	48	24	35		0.97	.181	38 46.5	38.88	.4
31	Tues	4 50	7 22	14 32	S 5	56.31	0 .207	N 17 23 4.7	39.59	15 47.5

THE CHARLOTTETOWN
STEAM NAVIGATION CO. (L'TD)

SEE PAGE 50

Buy Carpets at Prowse Bros.

Look elsewhere but don't buy Shoes until you get our prices.
R. K. Jost, Stamper's Corner.

1900]

JULY

17

MOON'S CHANGES

- ☽ First Quarter, 4th, 4h. 25m. p. m.
- Full Moon, 12th, 5h. 33m. a. m.
- ☾ Last Quarter, 18th, 9h. 43m. p. m.
- New Moon, 26th, 5h. 54m. a. m.

APOGEE	DECLINATION
3rd day, 7h. a. m.	0° 00' 00" 2nd, 3 p. m.
PERIGEE	S 22 14 28.7 9th, 8 p. m.
15th day, 4h. a. m.	0 00 00 16th, 6 a. m.
APOGEE	N 22 11 57.7 22nd, 5 a. m.
30th day, midnight	0 00 00 29th, 11 p. m.

D M	Sundays, &c.	MOON Rises		High Water Charlottetown	
		morn	even	morn.	evening
1	* 4th Sunday after Pentecost	10 3		0 56	1 18
2		10 27		1 35	1 56
3		11 18		2 15	2 36
4		even 0 18		2 55	3 16
5		1 17		3 40	4 2
6		2 22		4 36	4 59
7		3 26		5 52	6 16
8	5th Sunday after Pentecost	4 29		7 5	7 31
9		5 22		8 12	8 39
10		6 23		9 5	9 33
11		7 12		9 23	9 52
12		7 53		10 56	11 4
13		8 20		11 17	11 45
14		9 1		11 51	0 18
15	6th Sunday after Pentecost	9 30		0 33	1 0
16		10 23		1 11	1 35
17		11 40		1 50	2 16
18		morn 0 52		2 30	3 6
19		2 5		3 51	4 18
20		3 13		5 25	5 48
21		4 13		6 50	7 18
22	* 7th Sunday after Pentecost	5 14		7 54	8 22
23		6 1		8 57	9 18
24		6 41		9 36	10 2
25		7 29		10 16	10 41
26		*		10 40	11 0
27		7 43		11 14	11 36
28		8 10		11 25	11 47
29	8th Sunday after Pentecost	8 31		0 0	0 21
30		9 6		0 31	0 52
31		10 6		1 3	1 26

* The asterisks indicate the day on which the moon does not pass the upper or lower meridian at Greenwich.

For Bill Heads, Letter Heads, Note Heads, at lowest prices, call on

MURLEY & GARNHUM

Buy Gent's Furnishings at Prowse Bros.

"We aim to please" when you want Shoes try us.
R. K. JOST,—Stamper's Corner

18

THE P. E. ISLAND ALMANAC

[1900



D M	Day of Week	Sun		Dy's leng	Equation to app't Sun slow of clock		added time Hourly vari'n	Sun's Decl'n Greenwich Mean noon	Hourly vari'n	Sun's semi-di- ameter
		rises	sets		-m	sec				
1	Wed	4 51	7 20	14 29	S 5	51.04	0 .233	N 17 7 6.0	40.29	15 47.7
2	Thur	52	19 26			45.14	.259	16 50 50.9	40.97	.8
3	Fri	53	18 23			38.63	.284	34 19.4	41.64	48.0
4	Sat	55	16 20			31.50	.310	17 32.0	42.30	.1
5	C	56	15 18			23.77	.334	0 29.0	42.94	.3
6	Mon	57	13 15			15.45	.359	15 43 10.7	43.58	.5
7	Tues	58	13 11			6.54	.383	25 37.3	44.20	.6
8	Wed	5 0	12 9		4	57.05	.407	7 49.2	44.80	.8
9	Thur	1	10 8			46.99	.430	14 49 46.6	45.40	49.0
10	Fri	2	9 6			36.39	.453	31 29.8	45.99	.1
11	Sat	3	7 2			25.25	.475	12 59.1	46.56	.3
12	C	5	5 13	59		13.58	.497	13 54 14.7	47.12	.5
13	Mon	6	3 57			1.39	.518	35 17.0	47.67	.7
14	Tues	7	1 54		3	48.71	.539	15 6.2	48.21	.8
15	Wed	9 6	59 51			35.53	.559	12 56 42.7	48.73	50.0
16	Thur	10	57 48			21.88	.579	37 6.7	49.25	.2
17	Fri	11	55 45			7.76	.598	17 18.6	49.74	.4
18	Sat	12	53 42		2	53.20	.616	11 57 18.7	50.23	.6
19	C	13	51 39			38.19	.634	37 7.3	50.70	.8
20	Mon	15	50 36			22.75	.652	16 44.7	51.16	51.0
21	Tues	16	48 33			6.90	.669	10 56 11.3	51.60	.2
22	Wed	17	46 29		1	50.65	.685	35 27.5	52.03	.4
23	Thur	18	45 26			34.01	.701	14 33.4	52.45	.6
24	Fri	20	43 23			16.99	.717	9 53 29.6	52.85	.8
25	Sat	21	41 20		0	59.61	.732	32 16.3	53.24	52.0
26	C	22	39 17			41.87	.746	10 53.8	53.61	.3
27	Mon	23	37 14			23.78	.760	8 49 22.6	53.96	.5
28	Tues	25	35 11		0	5.37	.774	27 43.0	54.31	.7
29	Wed	26	34 8	F 0		13.37	.787	5 55.4	54.64	53.0
30	Thur	27	32 5			32.41	.799	N 7 44 0.0	54.95	53.2
31	Fri	5 28	6 30	13 1	F 0	51.74	0 .811	N 7 21 57.2	55.25	15 54.4

GUARDIAN PUBLISHING CO.

SEE PAGE 64

Buy Dress Goods at Prowse Bros.

1900]

AUGUST

19

MOON'S CHANGES

- ☽ First Quarter, 3rd, 8h, 57m. a. m.
- Full Moon, 10th, 1h, 41m. p. m.
- ☾ Last Quarter, 17th, 3h, 58m. a. m.
- New Moon, 24th, 8h, 8m. p. m.


PERIGEE
12th day, 3h. a. m.

APOGEE
27th day, 2h p. m.

DECLINATION

S 22° 6' 14.6" 6th, 8 a. m.
0 00 00 12th, 2 p. m.
N 22 1 0 18th, 11 p. m.
0 00 00 26th, 6 a. m

D M	Sundays, &c.	MOON Rises		High Water Charlottetown	
		morn	even	morn	after
1		11 6		1 42	2 3
2		0 8		2 16	2 38
3		1 10		2 57	3 20
4		2 12		3 57	4 21
5	9th Sunday after Pentecost	3 13		5 4	5 30
6		4 9		6 32	6 39
7		5 0		7 47	8 15
8		5 45		8 45	9 14
9		6 25		9 40	10 9
10		6 59		10 25	10 53
11		7 31		11 12	11 35
12	10th Sunday after Pentecost	8 5		11 34	0 1
13		9 22		0 3	0 30
14		10 39		0 49	1 16
15		11 53		1 32	1 59
16		morn 1 4		2 24	2 52
17		2 11		3 27	3 55
18		3 9		4 54	5 22
19	11th Sunday after Pentecost	4 0		6 22	6 49
20		4 43		7 34	8 0
21		5 14		8 25	8 50
22		5 47		9 15	9 39
23		6 13		9 52	10 24
24		6 46		10 25	10 59
25		* *		10 58	11 3
26	12th Sunday after Pentecost	6 58		11 16	11 41
27		7 57		11 44	12 5
28		8 57		0 2	0 23
29		9 58		0 33	0 55
30		10 52		1 9	1 31
31		even 0 3		1 42	2 6

Ask for 

MURLEY & GARNHUM'S

Prices on LETTER PRESS and BLANK BOOKS.

Lower Queen Street,

Charlottetown,

P. O. Box 72

Buy Carpets at Prowse Bros.

Call and see the bargains we are offering in Boots and Shoes.
R. K. JOST, Stamper's Corner

20

THE P. E. ISLAND ALMANAC

[1900



D M	Day of Week	Sun		Dy's leng	Equation subtr'd to app't time			Sun's Decl'n Greenwich Mean Noon	Hour- ly vari'n	Sun's semi-di- ameter			
		rises	sets		Sun fast of clock	Hour- ly vari'n	sec						
		h	m	h	m	m	sec	"	"	"			
1	Sat	5	30	6	28	12	58	F 1	11.34	0.822	N 6 59 47.4	55.54	15 53.7
2	C	31	26	55					31.29	.832	37 30.9	55.81	.9
3	Mon	32	24	52					51.20	.842	15 7.9	56.07	54 2
4	Tues	33	22	49		2	11.60	.850	32.17	.858	5 52 38.8	56.32	.4
5	Wed	35	20	55					52.76	.864	30 4.0	56.55	.7
6	Thur	36	18	42					31.58	.870	7 23.6	56.78	.9
7	Fri	37	16	39		3	13.58	.870	34.52	.875	4 44 38.1	56.99	55.2
8	Sat	38	14	36					55.57	.879	21 47.6	57.18	.4
9	C	40	12	33					16.17	.882	3 58 52.6	57.37	.7
10	Mon	41	10	29		4	16.17	.882	37.89	.884	35 53.3	57.54	.9
11	Tues	42	8	26					59.11	.885	12 49.9	57.70	56.2
12	Wed	43	6	23					20.35	.885	2 49 42.9	57.85	.5
13	Thur	45	4	20		5	20.35	.885	41.58	.884	26 32.5	57.98	.7
14	Fri	46	2	17					2.78	.883	3 19.1	58.10	57.0
15	Sat	47	1	13		6	2.78	.883	23.94	.880	1 40 3.0	58.21	.2
16	C	48	5	59	10				45.02	.876	16 44.5	58.30	.5
17	Mon	50	57	7					6.01	.872	0 53 24.9	58.38	.7
18	Tues	51	55	4		7	6.01	.872	26.89	.867	30 1.8	58.44	58.0
19	Wed	52	53	12	0				47.64	.861	N 6 38.2	58.49	.3
20	Thur	54	51	11	57				8.24	.855	S 16 46.2	58.52	.5
21	Fri	55	49	54		8	8.24	.855	28.68	.848	0 40 11.3	58.54	.8
22	Sat	56	47	51					48.93	.840	1 3 36.6	58.54	59.1
23	C	58	45	47					8.99	.831	27 1.8	58.52	.3
24	Mon	59	43	44		9	8.99	.831	28.84	.822	50 26.5	58.49	.6
25	Tues	6	0	41	41				48.45	.802	2 13 50.2	58.48	.9
26	Wed	1	39	39					7.81	.801	37 12.7	58.39	16 0.2
27	Thur	2	38	38		10	7.81	.801	26.92	.790	3 0 33.6	58.31	.5
28	Fri	3	35	35					45.74	.778	23 52.5	58.22	.7
29	Sat	4	33	31					4.26	0.765	47 8.9	58.12	1.0
30	C	6	6	5	31	11	28	F 11	4.26	0.765	S 4 10 22.6	58.00	16 1.3

BRUCE STEWART & CO.

Engineers and Machinists

SEE PAGE 42

Buy all kinds of Dry Goods at Prowse Bros.

Shoe Dressings—the best made at R. K. Jost's, Stamper's Corner.

1900]

SEPTEMBER

21

MOON'S CHANGES

- ☽ First Quarter, 2nd, 6h, 7m, a. m.
- ☾ Full Moon, 8th, 9h, 18m, p. m.
- ☾ Last Quarter, 15th, 1h, 9m, p. m.
- New Moon, 23rd, 0h, 9m, p. m.

PERIGEE
9th day, 10h. a. m.

APOGEE
23rd day, 8h p. m.

DECLINATION
S 21° 51' 52.7" 2nd, 5 p. m.
0 00 00 9th, 1 a. m.
N 21 45 41.5 15h, 6 a. m.
0 00 00 22nd, 12 a. m.
21 36 54 29th, 12 p. m.

D M	Sundays, &c.	MOON		
		Rises	High Water Charlottetown	
		evening	morn	after
1		0 59	2 26	2 51
2	13th Sunday after Pentecost	1 56	3 20	3 46
3		2 46	4 25	4 52
4		3 35	5 58	6 24
5		4 17	7 22	7 50
6		4 44	8 29	8 57
7		5 26	9 24	9 52
8		5 56	10 4	10 31
9	14th Sunday after Pentecost	6 56	10 45	11 13
10		8 15	11 20	11 48
11		9 24	0 4	0 33
12		10 49	0 31	1 0
13		11 39	1 15	1 43
14		morn 1 3	2 8	2 37
15		1 56	3 10	3 38
16	15th Sunday after Pentecost	2 42	4 33	5 0
17		3 30	5 57	6 22
18		3 47	7 2	7 26
19		4 17	8 0	8 22
20		4 42	8 33	9 5
21		5 3	9 22	9 43
22		5 49	9 56	10 17
23	16th Sunday after Pentecost	6 19	10 30	10 59
24	The year 5661 of the Jewish [Era commences	6 49	10 54	11 6
25		7 50	11 18	11 40
26		8 50	11 39	11 52
27		9 51	0 10	0 33
28		10 51	0 42	1 6
29	Michaelmas Day. St. Michael	11 48	1 21	1 46
30	17th Sunday after Pentecost	even 0 41	2 1	2 27

We can do anything and everything in the line
of Printing and Bookbinding

MURLEY & GARNHUM

Lower Queen Street

Charlottetown

Post Office Box 72

Buy Carpets at Prowse Bros.

Money back—if we cannot suit you in Boots and Shoes
 R. K. JOST.—Stamper's Corner

22

THE P. E. ISLAND ALMANAC

[1900



D M	Day of Week	Sun		Dy's leng	Equation subtr'ct to app't time			Sun's Decl'n Greenwich Mean noon	Hour- ly vari'n	Sun's semi-di- ameter				
		rises	sets		Sun fast of clock	Hour- ly vari'n	sec							
		h	m	h	m	h	m	sec						
1	Mon	6	7	5	29	11	25	F 11 22.46	0	.751	S 4 33 33.2	57.86	16	1.6
2	Tues	8	27	22				40.32	.736		36 40.4	57.71		.9
3	Wed	10	25	18				57.81	.721		5 19 43.7	57.54		2.2
4	Thur	12	23	15	12	14.91		.704			42 42.9	57.36		.4
5	Fri	13	21	11				31.61	.687		6 5 37.7	57.17		.7
6	Sat	15	19	8				47.88	.668		28 27.6	58.96		3.0
7	C	16	18	5	13	3.69		.649			51 12.3	56.74		.3
8	Mon	17	16	2				19.03	.629		7 13 51.5	56.51		.5
9	Tues	19	14	10	59			33.87	.608		36 24.9	56.26		.8
10	Wed	20	12	55				41.19	.585		58 52.0	55.99		4.1
11	Thur	21	10	52	14	1.97		.562			8 21 12.6	55.71		.4
12	Fri	23	8	49				15.19	.539		43 26.3	55.41		.6
13	Sat	24	7	46				27.82	.514		9 5 32.6	55.10		.9
14	C	26	5	43				39.86	.489		27 31.2	54.77		5.2
15	Mon	27	3	40				51.27	.462		49 21.7	54.45		.4
16	Tues	28	1	37	15	2.05		.436			10 11 3.8	54.07		.7
17	Wed	30	0	34				12.18	.408		32 36.9	53.69		6.0
18	Thur	31	4	58	31	21.64		.380			54 0.8	53.29		.2
19	Fri	33	56	27				30.41	.351		11 15 14.9	52.88		.5
20	Sat	34	54	24				38.48	.321		36 18.9	52.45		.7
21	C	36	53	21				45.84	.292		57 12.4	52.00		7.0
22	Mon	37	51	18				52.48	.261		12 17 44.9	51.54		.3
23	Tues	38	50	15				58.39	.231		23 26.0	51.05		.5
24	Wed	40	48	12	16	3.56		.220			58 45.3	50.55		.8
25	Thur	41	46	9				7.99	.169		13 18 52.4	50.04		8.0
26	Fri	43	44	6				11.67	.138		38 46.8	49.59		.3
27	Sat	44	43	3				14.60	.106		58 28.2	48.95		.6
28	C	46	41	0				16.76	.074		14 17 56.1	48.38		8.8
29	Mon	47	41	54				18.14	.041		37 10.0	47.79		9.1
30	Tues	49	39	9	50			18.74	.009		56 9.7	47.19		9.3
31	Wed	6	50	4	37	9	47	F 16 18.55	0.025	S 15 14 54.7	46.57	16	9.6	

HICKEY & NICHOLSON

Tobacconists

SEE PAGE 40

Buy Dress Goods at Prowse Bros.

Try our "Diamond" Shoe Dressing, 15cts. a bottle
R. K. Jost, Stamper's Corner.

1900]

OCTOBER

23

MOON'S CHANGES

- ☽ First Quarter, 1st, 1h, 22m, p. m.
- Full Moon, 8th, 5h, 40m, a. m.
- ☾ Last Quarter, 15th, 2h, 2m, a. m.
- New Moon, 23rd, 5h, 39m, a. m.

PERIGEE
7th day, 9h, p. m.

APOGEE
20th day, 10h. p. m.

DECLINATION

0° 00' 00" 6th, noon.
N 21 32 24 12th, 9 a. m.
0 00 00 19th, 6 p. m.
S 21 27 43.4 27th, 5 a. m.

D M	Sundays, &c.	MOON Rises	High Water Charlottetown	
			morn	evening
		evening	morn	evening
1		1 29	2 49	3 16
2		2 10	4 6	4 33
3		2 48	5 48	5 21
4		3 21	6 44	7 11
5		3 51	8 2	8 29
6		4 25	8 58	9 25
7	18th Sunday after Pentecost	5 45	9 55	10 3
8		7 5	10 24	10 53
9		8 23	11 2	11 31
10		9 38	11 38	0 8
11		10 58	0 21	0 51
12		11 48	1 5	1 34
13		morn 0 37	1 55	2 23
14	19th Sunday after Pentecost	1 20	2 54	3 20
15		1 51	3 58	4 23
16		2 20	5 12	5 35
17		2 45	6 19	6 41
18		3 8	7 22	7 43
19		3 43	8 7	8 28
20		4 34	8 48	9 9
21	20th Sunday after Pentecost	5 43	9 26	9 47
22		6 44	9 53	10 15
23		6 53	10 30	10 55
24		7 51	11 11	11 17
25		8 45	11 26	11 50
26		9 43	11 49	12 14
27		10 21	0 19	0 45
28	21st Sunday after Pentecost	11 25	1 2	1 28
29		even 0 08	1 42	2 9
30		0 47	2 29	2 55
31		1 19	3 56	4 22

*It gives us the greatest pleasure to quote prices on
Printing and Bookbinding*

MURLEY & GARNHUM

Lower Queen Street,

Charlottetown,

P. O. Box 72

Buy Gent's Furnishings at Prowse Bros.

What we say we do. Try us for Boots and Shoes.
R. K. Jost, Stamper's Corner.



D M	Day of Week	Sun		Dy's leng	Equation subtr't to app't time		Sun's Decl'n Greenwich Mean Noon	Hour- ly vari'n	Sun's semi-di- ameter							
		rises	sets		Sun fast of clock	Hour- ly vari'n										
		h	m	h	m	m	m	sec	"	"	"	"				
1	Thur	6	52	4	36	9	44	F 16 17.55	0.059	8	15	33	24.6	45.93	16	9.8
2	Fri		53		35		41		.093		51	39.0	45.28			10.1
3	Sat		54		33		38		.127		16	9	37.5	44.61		.3
4	C		55		32		35		.161		27	19.8	43.93			.5
5	Mon		56		30		32		.196		44	45.5	43.23			.8
6	Tues		58		29		29		.231		17	1	54.1	42.51		11.0
7	Wed		59		28		27	15 54 27	.267		18	45.3	41.78			.2
8	Thur	7	1		27		25		.302		35	18.8	41.03			.5
9	Fri		3		25		22		.338		51	34.1	40.26			.7
10	Sat		5		24		20		.374		18	7	30.8	39.48		.9
11	C		7		23		17		.410		23	8	6	38.69		12 1
12	Mon		8		22		15		.445		38	27.1	37.87			.3
13	Tues		9		21		13		.481		53	25.7	37.04			.5
14	Wed		10		20		10	14 48.48	.516		19	8	4.2	36.29		.7
15	Thur		12		19		7		.552		22	22.3	35.33			.9
16	Fri		13		18		6		.587		36	19.4	34.45			13.1
17	Sat		14		17		3		.622		49	35.2	33.56			.3
18	C		16		16		0	13 52.15	.656		20	3	9.3	32.64		.5
19	Mon		17		15	8	58		.689		16	1	3	31.72		.6
20	Tues		19		14		57		.722		28	31.0	30.78			.8
21	Wed		20		13		54		.754		40	37.8	29.82			14.0
22	Thur		21		13		52	12 42.88	.785		52	21.6	28.85			.2
23	Fri		23		12		50		.816		21	3	41.8	27.86		.3
24	Sat		24		11		48		.845		14	38.3	26.86			.5
25	C		25		11		46	11 43.10	.874		25	10.7	25.85			.7
26	Mon		26		10		44		.901		35	18.6	24.83			.8
27	Tues		28		10		42	10 59.84	.928		45	1.8	23.79			15.0
28	Wed		29		10		41		.954		54	20.0	22.74			.2
29	Thur		30		10		40		.979		22	3	12.9	21.69		.3
30	Fri	7	31	4	9	8	38	F 9 50.26	1.003	8	22	11	40.3	20.62	16	15.5

C. P. FLETCHER

Pianos and Organs

SEE PAGE 28

Buy Clothing at Prowse Bros.

Odd lots of Boots at odd prices at R. K. Jost's, Stamper's Corner.

1900]

NOVEMBER

25

MOON'S CHANGES

- Full Moon, 6th, 3h, 12m, p. m.
- ☾ Last Quarter, 13th, 6h, 49m, p. m.
- New Moon, 21st, 10h, 29m, p. m.
- ☽ First Quarter, 29th, 9h, 47m, a. m.

PERIGEE
5th day, 8h. a. m.

APOGEE
17th day, 10h a. m.

DECLINATION
0° 00' 00" 2nd, 9 p. m.
N 21 26 20 7 8th, 11 p. m.
0 00 00 15th, 12 p. m.
S 21 26 16 23rd, 11 a. m.
0 00 00 30th, 3 a. m.

D M	Sundays, &c.	MOON		
		Rises	High Water Charlottetown	
		evening	morn	after
1		1 51	4 30	4 56
2		2 20	5 59	6 25
3		3 17	7 33	7 59
4	22nd Sunday after Pentecost	4 28	8 32	9 0
5		5 56	9 23	9 51
6		7 10	10 4	10 34
7		8 24	10 50	11 17
8		9 30	11 25	11 56
9	Birth of Prince of Wales	9 56	0 7	0 36
10		11 13	1 30	1 59
11	23rd Sunday after Pentecost	11 50	1 37	2 3
12		morn 0 21	2 25	2 50
13		0 44	3 15	3 43
14		1 11	4 20	4 41
15		1 36	5 20	5 41
16		2 33	6 12	6 33
17		3 36	7 12	7 33
18	24th Sunday after Pentecost	4 34	8 9	8 31
19		5 34	8 51	9 14
20		6 36	9 33	9 57
21		7 43	10 10	10 35
22		* *	10 50	11 00
23		8 24	11 19	11 39
24		9 23	11 36	11 54
25	25th Sunday after Pentecost	10 2	0 5	0 30
26		10 48	0 55	1 12
27		11 20	1 41	2 7
28		11 52	2 10	2 35
29		even 0 21	2 58	3 23
30	St. Andrew's Day	1 0	3 51	4 21

Best Work—Promptly Finished—Lowest Rates

MURLEY & GARNHUM

Lower Queen Street

Charlottetown

P. O. Box 72

Buy Carpets at Prowse Bros.

Felt Slippers, warm and comfortable, at R. K. Jost's, Stamper's Corner

26

THE P. E. ISLAND ALMANAC

[1900



D M	Day of Week	Sun		Dy's		Equation subtr'ct from app't time			Sun's Decl'n		Hourly vari'n	Sun's semi-di- aneter						
		rises	sets	leng	Sun fast of clock	Hourly vari'n	Mean	Greenwich	Mean	Noon								
		h	m	h	m	h	m	m	sec	sec	"	"	"	"				
1	Sat	7	32	4	9	8	37	F	9	25	91	1.026	22	19	41.8	19.54	16	15.6
2	C		33		9		36		1.01	1.048				27	17.3	18.44		.7
3	Mon		34		8		34		8	35.59	1.070			34	26.6	17.35		.9
4	Tues		35		8		32			9.67	1.090			41	9.4	16.24		16.0
5	Wed		36		8		30		7	43.27	1.109			47	25.6	15.12		.1
6	Thur		37		8		29			16.42	1.128			53	14.8	14.00		.2
7	Fri		38		8		28		6	49.15	1.145			58	37.0	12.87		.4
8	Sat		39		8		28			21.48	1.161		23	3	32.0	11.73		.5
9	C		40		8		27		5	53.44	1.176			7	59.6	10.58		.6
10	Mon		41		8		27			25.05	1.189			11	56.6	9.43		.6
11	Tues		42		8		27		4	56.35	1.202			15	32.0	8.27		.7
12	Wed		43		9		26			27.36	1.213			18	36.5	7.11		.8
13	Thur		43		9		26		3	58.12	1.223			21	13.0	5.94		.9
14	Fri		44		9		26			28.66	1.232			23	21.5	4.77		17.0
15	Sat		45		9		25		2	59.00	1.239			25	1.8	3.60		.1
16	C		46		10		25			29.19	1.245			26	13.9	2.42		.1
17	Mon		46		10		25		1	59.26	1.249			26	57.6	1.24		.2
18	Tues		47		11		25			29.25	1.252			27	13.1	0.06		.2
19	Wed		47		12		25		0	59.18	1.253			27	0.3	1.13		.3
20	Thur		47		13		25	Fast		29.11	1.252			26	19.1	2.31		.3
21	Fri		48		13		25	Slow	0.92	1.250				25	9.6	3.48		.3
22	Sat		48		14		26		0	30.87	1.246			23	31.9	4.66		.4
23	C		48		15		26		1	0.71	1.240			21	25.9	5.84		.4
24	Mon		48		15		26			30.40	1.253			18	51.8	7.01		.5
25	Tues		49		16		27			59.00	1.224			15	49.6	8.18		.5
26	Wed		49		16		28		2	29.17	1.214			12	19.5	9.34		.5
27	Thur		49		17		28			58.19	1.203			8	21.5	11.50		.5
28	Fri		49		18		28		3	26.90	1.190			3	55.8	11.65		.5
29	Sat		49		18		28		4	0.75	1.178		22	57	53.2	13.08		.5
30	C		49		19		30			28.86	1.164			25	25.6	14.22		.5
31	Mon	7	49	4	20	8	31	S	4	56.60	1.148	8	22	46	30.7	15.36	16	17.5

JOHN MACLEOD & CO.

Merchant Tailors

SEE PAGE 44

Buy all kinds of Dry Goods at Prowse Bros.

We guarantee you the best value to be had in the Shoe line.
R. K. Jost, Stamper's Corner.

1900]

DECEMBER

27

MOON'S CHANGES

- Full Moon, 6th, 2h, 50m, a. m.
- ☾ Last Quarter, 13th, 2h, 56m, p. m.
- New Moon, 21st, 4h, 13m, p. m.
- ☽ First Quarter, 28th, 6h, 0m, p. m.

PERIGEE

3rd day, 11h, a. m.
 15th day, 5h, a. m.

PERIGEE

30th day, 12h, a. m.

DECLINATION

N 21° 26' 21.9" 6th, 10 a. m.
 0 00 00 13th, 8 a. m.
 S 21° 26' 41.7" 20th, 7 p. m.
 0 00 00 27th, 10 a. m.

D M	Sundays, &c.	MOON RISES		
		evening	morn	High Water Charlottetown after
1		2 15	5 27	5 53
2	1st Sunday in Advent	3 29	6 57	7 24
3		4 45	8 6	8 34
4		6 00	9 5	9 33
5		7 9	9 39	10 19
6		8 10	10 32	11 2
7		9 4	11 13	11 42
8		9 46	11 52	0 20
9	2nd Sunday in Advent	10 20	0 27	0 55
10		10 48	1 12	1 36
11		11 14	2 1	2 24
12		11 39	2 28	2 59
13		morn 0 22	3 15	3 36
14		1 23	4 16	4 37
15		2 22	5 21	5 42
16	3rd Sunday in Advent	3 23	6 24	6 46
17		4 25	7 33	7 51
18		5 25	8 19	8 43
19		6 23	9 7	9 33
20		7 5	9 58	10 15
21	St. Thomas' Day	7 43	10 50	11 2
22		8 5	11 5	11 17
23	4th Sunday in Advent	8 47	11 33	0 0
24		9 22	11 53	0 20
25	Christmas Day	10 7	0 29	0 50
26		10 26	1 2	1 29
27		10 54	1 57	2 12
28		even 0 3	2 42	3 7
29		1 16	4 28	4 54
30		2 49	4 52	5 19
31		3 43	6 23	6 51

Cheese and Butter Statements, Bill Heads, Butter Labels, &c., &c. At very Lowest Prices.

MURLEY & GARNHUM

Lower Queen Street,

Charlottetown,

P. O. Box 72

Buy Gent's Furnishings at Prowse Bros.

Fletcher's

**PIANO
WAREROOMS**

Opera House Building

Pianos and Organs sold on easy terms

PIANOS TO RENT

C. P. FLETCHER

Robert Palmer & Co.

Peake's No. 3 Wharf

Manufacturers of

**Architraves, Moulding, Doors, Sashes,
Blinds, Flooring, Clapboards,
Stair Railing, Newel
Posts, Balusters
&c., &c.**

Charlottetown

P. E. Island

Buy Hats and Caps at Prowse Bros.

THE WEATHER

MOON	TIME OF CHANGE		IN SUMMER		IN WINTER	
	If New Moon, First Quarter, Full Moon or Last Quarter happens.—	Between Midnight and 3 in the morning		Fair		Hard frost with N. or W.
do		2 and 4	do	do	Snowy and Stormy	[wind]
do		4 and 6	do	do	Rain or Snow	
do		6 and 8	do	do	Stormy	
do		8 and 10	do	do	Rain with E. or W. wind	
do		10 and 12	do	do	Snow with N. E. or W. wind	
do		12 noon and 2 afternoon			Cold with high winds	
do		2 and 4	do		Snow or Rain	
do		4 and 6	do		Fair and Mild	
do		6 and 8	do		Fair and Frosty	
do		8 and 10	do		do	do
do		10 and 12	do		do	do
				Frequent Showers		
				Very Rainy		
			Changeable			
			Fair			
			Fair with wind N. or W.			
			Rainy if S. or E.			
			do	do		
			Fair			

REMARKS.—The nearer the Moon's changes to midnight the fairer the weather will be during the next seven days; the nearer to mid-day, the rougher and more stormy. The former time occupies from 10 p. m. to 2 a. m., the latter from 10 a. m. to 2 p. m.

2. The phases happening from 4 to 10 p. m., may be followed by fair weather, but this chiefly depends upon the direction of the wind.

3. If a storm arises from the east on or immediately preceding the Spring Equinox, or a week after, the following Spring or Summer will be wet four times out of five; if from the West, North or South-west the Spring and Summer will be dry five times out of six.

1900]

THE P. E. ISLAND ALMANAC

29

Your moneys worth in Boots and Shoes at our store,
R. K. Jost, Stampers' Corner

32 TO 38
QUEEN STREET

P. O. BOX 326
TELEPHONE 174

LEITH HOUSE

Charlottetown, P. E. Island

Established 1887

The most extensive Wine and Liquor importing House in the Province.
An elaborately equipped retail department in connection.

Agent for the Silver Spring Brewery

SHERBROOKE, P. Q.

The best equipped and most modern Brewery in Canada

Write me for Liquor and Ale quotations
before purchasing elsewhere

A. MACDONALD

PROPRIETOR and MANAGER

WORTH'S LIVRY

STABLES

Telephone
Communication

PRINCE STREET ...

Charlottetown, P. E. Island

FIRE

GUARANTEE

ACCIDENT

D. B. STEWART

INSURANCE AGENT

REPRESENTING

Queen Insurance Company
Alliance Assurance Company of London, England
Lancashire Assurance Company of Manchester, England
London Guarantee and Accident Company of London, England

Risks taken at lowest rates. Prompt Settlements

OFFICE-NEXT BANK OF N. S.
GREAT GEORGE ST., CH'TOWN



HER MOST GRACIOUS MAJESTY QUEEN VICTORIA

THE QUEEN AND ROYAL FAMILY.

THE QUEEN.—Victoria, of the United Kingdom of Great Britain and Ireland, Queen, Defender of the Faith, Empress of India. Her Majesty was born at Kensington Palace, May 24th, 1819; succeeded to the throne June 20, 1837, on the death of her uncle King William IV.; was crowned June 28, 1838; and married Feb. 10, 1840, to his late Royal Highness Prince Albert, PRINCE CONSORT, who was born August 26, 1819, and died December 14, 1861. Her Majesty is the only child of his late Royal Highness Edward, Duke of Kent, son of King George III. The children of Her Majesty are:—

Her Imperial Majesty Victoria Adelaide Mary Louisa, PRINCESS ROYAL, Empress Frederick of Germany, born Nov. 21, 1840, and married Jan. 25, 1858, to Frederick, Crown Prince of Prussia, afterwards (March to June 1888) second German Emperor, who died June 15, 1888, and has issue four sons, the eldest, William, the present German Emperor, and four daughters.

His Royal Highness Albert Edward, PRINCE OF WALES, born Nov. 9, 1841; married March 10, 1863, Alexandra of Denmark (Princess of Wales), born December 1, 1844, and has issue, *Albert Victor*, Duke of Clarence and Avondale, born Jan. 8, 1864, died Jan. 14, 1892; George Frederick Ernest Albert, Duke of York, born June 3, 1865, married July 6, 1893, to Princess Victoria Mary (May) of Teck, and has issue a son Edward A. C. G. A. P. D., born June 23, 1894, the third in direct line of succession to the throne, Albert F. A. G., born Dec. 14, 1895, and Victoria Alexandra Alice Mary, born April 25, 1897; Louisa Victoria Alexandra Dagmar, born Feb. 20, 1867, married July 27, 1889, to Alexander, Duke of Fife; Victoria Alexandra Olga Mary, born July 6, 1868; Maude Charlotte Mary Victoria, born Nov. 26, 1869, married July 22, 1896, to Prince Charles, second son of Crown Prince of Denmark; and *Alexander*, born April 6, died April 7, 1871.

Her Royal Highness *Alice Maud Mary*, born April 25, 1843, married July 1, 1862, to Prince Frederick Louis of Hesse (afterwards Louis IV., Grand Duke of Hesse), and died December 14, 1878; having had issue two sons, one the present Grand Duke of Hesse, and one accidentally killed, also five daughters, one of whom married Nov. 26, 1891, the Czar of Russia, Nicholas II.

His Royal Highness Alfred Ernest Albert, Duke of Edinburgh, born Aug. 6, 1844, succeeded his uncle, the elder brother of Prince Albert, as Duke of Saxe-Cobourg-Gotha, Aug. 23, 1893, married Her Imperial Highness the Grand Duchess Marie of Russia, Jan. 23, 1874, and has issue two sons and three daughters.

Her Royal Highness Helena Augusta Victoria, born May 25, 1846; married to H. R. H. Prince Frederick Christian Charles Augustus of Schleswig-Holstein-Sonderburg-Augustenburg, July 5, 1866, and has issue three sons and two daughters.

Her Royal Highness Louise Caroline Alberta, born March 18, 1848; married March 21, 1871, to the Marquis of Lorne, eldest son of the Duke of Argyll.

His Royal Highness Arthur William Patrick Albert, Duke of Connaught, born May 1, 1850; married March 13, 1879, to Princess Louise Margaret, daughter of the late Prince Frederick Charles of Prussia, and has issue one son and two daughters.

His Royal Highness *Leopold George Duncan Albert*, Duke of Albany, born April 7, 1833; married April 27, 1852, to Princess Helen of Waldeck, and died March 28, 1884, having had issue one son, now Duke of Albany, and one daughter.

Her Royal Highness Beatrice Mary Victoria Feodora, born April 14, 1857; married July 23, 1885, to Prince Henry of Battenburg, who died Jan. 20, 1896, and has issue three sons and one daughter.

Malcom McLeod, Q. C.

Duncan C. McLeod, B. A.

M. & D. C. McLEOD

Attorneys, Solicitors, &c.

Bank of Nova Scotia Building

CHARLOTTETOWN, P. E. ISLAND

McLeod, Morson & McQuarrie

**BARRISTERS, ATTORNEYS-AT-LAW
NOTARIES PUBLIC, &c.**

Solicitors for Merchants Bank of Halifax

OFFICE—Brown's Block, Charlottetown, P. E. Island

J. A. McDONALD

Barrister, Solicitor, &c.

Money to loan on Real Estate

Cameron Block,

Charlottetown, P. E. Island

F. W. L. Moore

Attorney-at-Law

LONDON HOUSE CORNER

Specialties:--LOANS and COLLECTIONS

THE BRITISH EMPIRE

	Population
United Kingdom	39,465,720
British India	287,223,431
Dominion of Canada	5,083,424
Australasia	4,713,251
Possessions in America (not including the Dominion)	1,999,047
Possessions in Europe (not including the United Kingdom)	193,065
Possessions in Asia	4,086,764
Possessions in Africa	4,763,952
	347,528,654
PROTECTORATES:—	
Asia	1,200,000
Africa	35,000,000
Pacific	10,000
	Total Protectorates..... 36,210,000
	Total British Empire..... 383,738,654
Area in square miles	11,475,127

Cabinet Ministers of Great Britain and Ireland

Prime Minister and Secretary of State for Foreign Affairs—Marquis of Salisbury.

Lord President of the Council—*Duke of Devonshire.

First Lord of the Treasury and Leader of the House of Commons—Rt. Hon. A. J. Balfour.

Lord Chancellor—Lord Halsbury.

Secretary for India—Lord Geo. Hamilton.

Chancellor of the Exchequer—Sir Michael Hicks-Beach.

Home Secretary—Sir Matthew White Ridley.

Secretary for the Colonies—*Rt. Hon. J. Chamberlain.

Secretary for War—*Marquis of Lansdowne.

Secretary for Scotland—Lord Balfour of Burleigh.

First Lord of the Admiralty—*Rt. Hon. J. G. Goschen.

President of the Board of Trade—Rt. Hon. C. T. Ritchie.

Chancellor of the Duchy of Lancaster—*Lord James.

Lord Privy Seal—Viscount Cross.

President of the Local Government Board—Rt. Hon. Henry Chaplin.

Lord Lieutenant of Ireland—Earl Cadogan.

Lord Chancellor of Ireland—Lord Ashbourne.

President of the Board of Agriculture—Rt. Hon. W. Long.

First Commissioner of Works—Rt. Hon. Ackers Douglas.

The foregoing form the Cabinet.

Chief Secretary for Ireland—Gerald Balfour.

Postmaster-General—Duke of Norfolk.

Vice-President of the Council—Sir John E. Gorst.

Junior Lords of the Treasury—H. T. Anstruther, W. Hayes Fisher, Lord Stanley.

Financial Secretary to the Treasury—Rt. Hon. R. W. Hanbury.

Patronage Secretary to the Treasury—Sir W. Walrond.

Under Secretary for the Home Department—*Jesse Collings.

Under Secretary for Foreign Affairs—Hon. Geo. Curzon.

Under Secretary for the Colonies—*Earl of Selborne.

Under Secretary for India—Earl of Onslow.

Parliamentary Secretary to the Board of Trade—Earl of Dudley.

Parliamentary Secretary to the Local Government Board—*T. W. Russel.

Secretary to the Admiralty—W. E. G. Macartney.

Under Secretary for the War Office—Hon. W. St. John Brodrick.

Financial Secretary to the War Office—*Powell Williams.

Civil Lord to the Admiralty—*Austin Chamberlain.

Attorney General—Sir R. Webster.

Solicitor-General—Sir C. Scott Dickson.

Lord Advocate for Scotland—Rt. Hon. R. C. Pearson.

PETERS, INGS & SAUNDERS

Barristers, Solicitors, &c.

*Arthur Peters, Q. C.
A. Ernest Ings
Albert C. Saunders*

MONEY TO LOAN

OFFICES—Charlottetown, Cameron Block,
Summerside, opposite Merchant Bank of Halifax

John T. Mellish, M. A., LL. B.

**Barrister and Attorney-at-Law
Notary Public, &c.**

CHARLOTTETOWN, P. E. ISLAND

*Collecting, Conveyancing and all other legal business
promptly attended to*

Æneas H. Macdonald

**Barrister-at-Law
Solicitor and Notary Public**

Agent for Credit Foncier Franco-Canadien

MONEY TO LOAN

OFFICE—Great George Street, near Bank of Nova Scotia, Charlottetown

W. S. Stewart, Q. C.

*OFFICE—Prowse's New Block
North side Queen Square*

CHARLOTTETOWN, P. E. I.

BRITISH EMPIRE—Cabinet Ministers of Great Britain and Ireland—(Continued).

Attorney-General for Ireland—Rt. Hon. John Atkinson.

Solicitor-General for Ireland—W. Kenny

Vice-Chamberlain of the Household—Hon. Alwyn Fellowes.

Comptroller of the Household—Lord Arthur Hill.

Lord Chamberlain—Earl of Latham.

Members of the Ministry whose names are marked with an asterisk are of the Liberal-Unionist party.

British Minister at Washington, U. S. A.

Envoy Extraordinary and Minister Plenipotentiary—Sir Julian Pauncefote, G. C. B., G. C. M. G.

Governor-General of the Dominion of Canada

His Excellency the Right Honourable Sir Gilbert John Murray Kynnmound Elliot, Earl of Minto and Viscount Melgund, of Melgund, County of Forfar, in the Peerage of the United Kingdom,

Baron Minto, of Minto, County of Roxburg, in the Peerage of Great Britain, Baronet of Nova Scotia. Sworn in at Ottawa, 14th November, 1898.

Previous Governors

1. The Right Hon. Viscount Monck, G. C. M. G. From Confederation until November, 1868.

2. The Right Hon. Lord Lisgar, G. C. M. G. From November, 1868, until May, 1872.

3. The Right Hon. the Earl of Dufferin, K. P., K. C. B., G. C. M. G. From May, 1872, until November, 1878.

4. The Right Hon. the Marquis of Lorne, K. T., G. C. M. G., P. C., &c. From November, 1878, until October, 1883.

5. The Most Hon. the Marquis of Lansdowne, G. C. M. G., &c., &c. From October, 1883, until June, 1888.

6. The Right Hon. Sir Frederick Arthur Stanley, Earl of Derby, Baron Stanley of Preston, P. C., G. C. B. From June, 1888, until August, 1893.

7. The Right Hon. Sir John Campbell Hamilton Gordon, Earl of Aberdeen, Viscount Formartine, Baron Haddo, Methlic, Tarves and Kellie, in the Peerage of Scotland, Viscount Gordon, of Aberdeen, County of Aberdeen, in the Peerage of the United Kingdom, Baronet, &c. &c. From September, 1893, to November, 1898.

DOMINION OF CANADA

Area and Population, — Dominion of Canada, Newfoundland, &c.

Provinces, Districts, Territories	Entered Confederation or Organized	Square Miles			Populat'n Census 1891
		Land	Water	Total	
Manitoba, Province	Ent'd Confederation 1870	65,000	9,000	74,000	152,506
Saskatchewan, District	Organized 1882	191,450	7,000	198,450	
Assiniboia, do	do	83,650	550	90,200	
North West Territories	do	859,600	46,400	906,000	
Athabasca, District	Organized 1882	103,300	1,200	104,500	98,967
Alberta, do	do	105,850	250	106,100	
British Columbia, Province	Ent'd Confederation 1871	382,300	1,000	383,300	98,173
Ontario, do	Ent'd Confederation 1867	219,650	2,350	222,000	2,114,321
New Brunswick, do	do	28,100	100	28,200	321,263
Nova Scotia, do	do	20,550	50	20,600	450,396
Prince Edward Island, do	Ent'd Confederation 1873	2,000	2,000	109,078
Quebec, do	Ent'd Confederation 1867	227,500	1,400	228,900	1,488,535
Territory east of Hudson Bay	352,300	5,700	358,000	Unknown
Islands in Arctic Ocean and Hudson's Bay	300,000	300,000	do
Keewatin, District	Organized 1876	267,000	15,000	282,000	do
Territory east of Keewatin and south of Hudson's Bay	194,300	2,500	196,800	do
Great Lakes and River St. Lawrence east to Long. 66°, and portions within United States, not included in above areas.	47,400	47,400
Totals	3,318,500	139,900	3,458,400	4,833,239
Labrador	40,000	4,000
Newfoundland	42,734	187,411
do French Shore, from Cape Ray to Cape St. John, say	10,000
NOTE —The Population of the Dominion of Canada, exclusive of Labrador and Newfoundland, is estimated to be now 5,083,424	5,034,650

A. L. Dickey, M. D.

*Late of Royal London Ophthalmic Hospital, Moorfield
and Central London Throat and Ear Hospital*

Specialist in diseases of the

EYE, EAR, NOSE & THROAT

Office—Cameron Block.

Residence—Richmond Street, West

Office Hours—9.30 to 1 p. m., 2 to 4 p. m.

Evenings by appointment

Eyes Tested for Glasses

Davies & Haszard

Barristers and Attorneys-at-Law
Solicitors in Chancery
Notaries Public, &c.


CHARLOTTETOWN, P. E. ISLAND

Special attention given to collections

SIR. L. H. DAVIES, Q. C., M. P., K. C. M. G.

F. L. HASZARD, Q. C., JUDGE OF CITY COURT

Warburton & MacKinnon

Barristers, Solicitors,
 Notaries Public, &c.

Cameron Block - - - Charlottetown, P. E. I.

Offices also in Summerside and Montague.

W. F. H. Carvell, B. A.

Barrister, Solicitor, Notary Public, &c.

Commissioner for

Taking Proof of Deeds for Registry

Bank of Nova Scotia, Charlottetown

MONEY TO LOAN

TELEPHONE 170



THE RIGHT HON. SIR WILFRED LAURIER, G. C. M. G., P. C., PREMIER OF CANADA

Privy Council of the Dominion of Canada

Prime Minister—The Right Hon. Sir Wilfred Laurier, G. C. M. G., P. C., President of the Queen's Privy Council.

Minister of Trade and Commerce.—Hon. Sir Richard J. Cartwright, G. C. M. G.

Secretary of State.—Hon. Richard William Scott.

Minister of Justice—Hon. David Mills.

Minister of Marine and Fisheries.—Hon. Sir Louis Henry Davies, K. C. M. G.

Minister of Militia and Defence.—Hon. Frederick William Borden.

Postmaster General.—Hon. Wm. Mulock.

Minister of Agriculture.—Hon. Sydney Arthur Fisher.

Minister of Public Works—Hon. Joseph Israel Tarte.

Without Portfolio.—Hon. Richard Reid Dobell.

Minister of Finance.—Hon. Wm. Stevens Fielding.

Minister of Railways and Canals.—Hon. Andrew George Blair.

Without Portfolio.—Geo. Taylor.

Minister of the Interior and Sup. General of Indian Affairs.—Hon. Clifford Sifton.

Minister of Customs.—Hon. William Patterson.

Minister of Inland Revenue.—Hon. Sir Henri Joly de Lotbiniere, K. C. M. G.

Clerk of the Queen's Privy Council.—John Joseph McGee, Esquire.

NOT IN THE CABINET

Solicitor General of Canada.—Hon. Chas. Fitzpatrick.

Salary of Prime Minister, \$8,000; others, \$7,000; those without portfolio, nil; Members not in the Cabinet, \$5,000.

Members of Cabinet in addition to regular salary receive \$1,000 sessional allowance.

High Commissioner for Canada in London

Lord Stratheona and Mount Royal.

Secretary of Canadian Government Offices in London.—Joseph G. Colmer, C. M. G.

Senators for Prince Edward Island

The Honourables Andrew A. Macdonald, Samuel Prowse, Donald Ferguson, and John Yeo.

Members of the House of Commons for P. E. Island

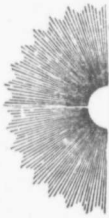
West Queen's County.—The Hon. Sir Louis H. Davies.

East Queen's County.—Alexander Martin, Esquire.

East Prince County.—John H. Bell, Esq.

West Prince County.—Bernard N. McLellan, Esquire.

King's County.—Augustine Colin Macdonald, Esquire.



McFARLANE, SON. and HODGSON

Wholesale Stationers - - -

636 CRAIG STREET, MONTREAL

Have always on hand a large and varied assortment

- of -

COMMERCIAL, PROFESSIONAL and SCHOOL STATIONERY, PRINTING
and ACCOUNT-BOOK PAPERS, INVOICE and STATEMENT
BLANKS, WEDDING and MOURNING STATIONERY,
COMMERCIAL and VISITING CARDS,
and CARDBOARDS

Proprietors of the following well known water-
marked papers

Crystal Brook - Berkshire Bond
Bearsden Mill - M. G. Canada
Best Linen - Damascus Bond
Superfine Ceylon Ivory

*Canadian Agents for the celebrated Printing Inks, &c.
of the Jaenecke Printing Ink Co.*

*Underwood's unexcelled Writing and Copying Inks
Stephen's Writing and Copying Inks also in stock*

Dominion Departments in Prince Edward Island

Post Office Department

POST OFFICE, CHARLOTTETOWN

Postmaster and Assistant Inspector—F. DE. ST. C. BRECKEN

CLERKS—John A. Lawson, Nicholas White, Bernard Trainor, J. M. Campbell, Joseph McCarey, J. N. Robertson, W. F. H. Gill, J. A. Callaghan, J. T. Clarkin, J. M. Hughes.

Office open every week day from 8 a. m. till 8 p. m.

Money Order Office open from 9 a. m. till 4 p. m.

Railway Mail Clerks—Otto R. Crabbe, T. W. Haszard, D. J. McDonald, F. C. McLean.

Stamp Vendors for Charlottetown—R. H. Mason, at Post Office; George E. Hughes, Queen Square; A. S. Johnson, Kent Street; W. R. Watson, Queen Street.

Post Offices in Prince Edward Island

(Post Offices marked * are Savings Bank Offices)

QUEEN'S COUNTY

Afton Road	Crapaud	Hazel Grove	Mount Herbert
Alberry Plains	Cymbria	Hope River	Mount Ryan
Alexandra	Darlington	Hunter River	Mount Stewart
Appin Road	DeSable	Iris	Mount Vernon
Argyle Shore	Dromore	Johnston's River	Murray Harbor Rd.
Aubura	Dromore West	Kelly's Cross	New Argyle
Bay View	Dunedin	Kinlock	New Dominion
Beaton's Mills	Earnsliffe	Kinross	New Glasgow
Belfast	Ebenezer	Kingston	New Haven
Belle Creek	Elliott's Mills	Lake Verd	New London
Blooming Point	Elmwood	Lincoln	Newton Cross
Bonshaw	Emerald	Little York	New Wiltshire
Bonwell	Emyvale	Long Creek	Nine Mile Creek
Brackley Beach	Fairview	Long River	North Milton
Brackley Point	Flat River	Lot 30	North River
Brackley Point Rd.	Fort Augustus	Lot 35	North Rustico
Bradalbane	Found's Mills	Lot 48	Orwell
Brookfield	Fredericton	Lot 67	Orwell Cove
Bungay	French River	Lyndale	Oyster Bed Bridge
Caedonia	French Village	Marshfield	Park Corner
Canoe Cove	Gamble's Corner	Martin	Pinette
Cavendish	Garfield	Mayfield	Pisquid
Charlottetown	Glenfinnan	Mermald Farm	Pisquid Road
Cherry Valley	Graham's Road	Milcove	Point Prim
China Point	Grand Tracadie	Milvale	Pownal
Clarketown	Grand View	Milview	Pleasant Grove
Clinton	Granville	Milton Station	Riverdale
Clyde River	Hampshire	Monaghan	Rocky Point
Clyde Station	Hampton	Montague Cross	Roseberry
Cornwall	Harrington	Mount Albion	Rose Valley
Covehead Road	Hartsville	Mount Buchanan	Rustico

HICKEY and NICHOLSON

MANUFACTURERS OF

TOBACCO

No. 1 Queen Street, Charlottetown, P. E. Island

Bright Smoking Chewing Flat, 12s
Chewing Flat, 8s Black Twist

ALL TOBACCOS WARRANTED

A. Kennedy & Co.



Lower Queen Street
Charlottetown, P. E. Island

Ship Chandlers and Sail Makers

Chains, Anchors, Iron and Steel. All sizes flexible Steel Wire, Tar, Wanson's Copper Paint, Gloucester, Mass. Plymouth Cordage, Plymouth Mass. Woodbury Cotton Duck, Baltimore, Md., Hubbuck's White Lead. A full line of Steam Boat Supplies and fishing outfits.

AGENTS FOR

Magnolia Metal Co., N. Y.
New Jersey Copper Paint
New Jersey, N. Y.

DOMINION DEPARTMENTS—Post Offices—(Continued)

Rusticoville	Springfield	Trilby	Webster's Corner
St. Ann's	Stanchel	Tyrone	West Covehead
St. Catherine	Stanhope	Union Road	West Newton
Scotchfort	*Stanley Bridge	Upp'r Westmoreland	Wheatley River
Sea View	Suffolk Station	Vernon River	Winsloe Road
Selkirk Road	Tarentum	Vernon River Bridge	Winsloe Station
South Granville	Ten Mile House	Village Green	Wood Islands
South Melville	Thornedyke	*Victoria	Wood Islands North
Southport	Tracadie Cross		

PRINCE COUNTY

Abram's Village	Fitzgerald Station	McNeill's Mills	Roxbury
Albany	Fortune Cove	Maddock	St. Anthony
*Alberton	Freeland	Margate	St. Chrysostome
Alma	Freetown	Maple Plains	St. Eleanor's
Arlington	Glengarry	Middleton	St. Gilbert
Augustine Cove	Greenmount	Mill Piver	St. Louis
Baltic	Hamilton	Miminigash	St. Timothy
Bedeque	Higgin's Road	Miscouche	Searletown
Belmont	Indian River	Montrose	Sea Cow Head
Bloomfield	Inverness	Mount Carmel	Sea Cow Pond
Bloomfield Station	*Kensington	Mount Pleasant	Shamrock
Bradford	Kildare	Muddy Creek	Skinner's Pond
Brae	Kildare Capes	Nail Pond	South Kildare
Brocton	Kinkora	Newton	Southwest, Lot 16
Burlington	Lansdowne Hotel	New Annan	Spring Valley
Burton	Lauretta	Norborough	Summerside
Cape Egmont	Leoville	Norham	*Tignish
Cape Wolf	Linkletter	North Bedeque	Travellers Rest
Carleton	Little Pierre Jacques	North Carleton	Tryon
Central Bedeque	Little Tignish	North St. Eleanor's	Tyne Valley
Chelton	Lock Road	North Tryon	Urbonville
Clarke's Mills	Lot 1	O'Leary Road	Union Corner
Clermont	Lot 4	O'Leary Station	Victoria West
Coleman	Lot 6	Palmer Road	Waterford
Conway Station	Lot 8	Peterville	Wellington
Darnley	Lot 10	Piusville	Wellington Station
DeBlois Station	Lot 11	Piusville Station	West Cape
Duvar Road	Lot 12	Port Hill	West Devon
Ebbsfleet	Lot 14	Poplar Grove	Western Road
Egmont Bay	Lot 16	Princetown	West Point
Ellis River	Lower Freetown	Roseville	Wilmot Valley
Elmsdale	McDougall	Ross's Corner	Woodville
Eumore			

KING'S COUNTY

Aiken's Ferry	Campbell's Cove	Fairmington	Heatherdale
Albion	Cardigan Bridge	Forrest Hill	Hermanville
Albiston	Cardross	Fortune Bridge	High Bank
Armadae	Charnwood	Gaspereaux	Hopeville
Baldwin's Road	Chepstow	*Georgetown	Kingsborough
Bangor	Cherry Grove	Glencorrodale	Lakeville
Bay Fortune	Clear Springs	Glenfanning	Launching Place
Bayfield	Commercial Cross	Glen William	*Little Pond
Beach Point	Corrville	Glen Martin	*Little Sands
Bear River	DeGros March	Goose River	*Little Harbor
Bothwell	Dingwell's Mills	Gowan Brae	Lot 40
Bridgetown	Dundas	Green Vale	Lot 56
Brooklyn	Durell	Greenwich	Lorne Valley
Brudenell	East Baltic	Hayden's Mills	Lower Montague
Byrne's Road	East Point	Hazel Green	Lower Rollo Bay
Cable Head	Elliot Vale	Head St. Peter's Bay	Mansfield
Cable Head West	Elmira	Head of Cardigan	Marie Bridge
Cambridge Road	Fairfield	Head Hillsborough	Marten Vale

Bruce Stewart & Co.

"The Modern " Founders, Engineers,
Machinists and Boiler Makers

MANUFACTURERS OF

Steam Engines and Boilers, Farm,
Dairy and Cheese Factory Machinery

CAN MAKERS TOOLS A SPECIALTY

Dealers in Engineers, Millers and Dairy Supplies
Agents for Leffel Water Wheels
Steam and Hot Water Heating done
Assortment of Steam Pipe and Fittings always on hand

**Repairing of all description done at short
notice and with prices to suit the times**

We solicit you valued orders from time to time and will
guarantee our work to be satisfactory in every respect.

Orders sent by mail will be carefully and promptly attended
to. Remember when wanting anything in our line, don't forget

"The Modern Foundry and Machine Shop "

Steam Navigation Co's Wharf

Phone 125

CHARLOTTETOWN, P. E. ISLAND

**WHEN YOU
WANT**

BOOKS & STATIONERY

MAGAZINES, PERIODICALS, LATEST
AMERICAN and CANADIAN PAPERS

GIVE US A CALL

Photographic views of the Island } Amateur finishing a specialty. Well equipped dark
always on hand } room in connection.

145 Queen Street
Opp. Prowse Bros.

GNAS. J. MITGHELL,

*Bookseller and
Stationer*

DOMINION DEPARTMENTS—Post Offices—(Continued)

Midgell	Narrows Creek	Rollo Bay	Souris West
Milburn	New Acadia	Rollo Bay Cross	South Lake
Midgell Mills	New Harmony	Ruskin	Sturgeon
Miltown Cross	New Perth	St. Andrews	Summerville
Mitchell River	Newport	St. Margaret's	Upton
*Montague Bridge	New Zealand	St. Mary's Road	Valleyfield
Monticello	North Lake	St. Patrick's Road	Valleyfield, East
Morell Rear	Peake's Station	Sailor's Hope	Victoria Cross
Morell Station	Peter's Road	Savage Harbor	West St. Peter's
Mount Hope	Point Popular	Sinnot's Road	Whim Road Cross
Murray Harbor N.	Red House	St. Teresa	White Sands
Murray Harbor S.	Red Point	Souris East	Woodville Mills
Murray River	Rock Barra		

Money Order Offices

are at Alberton, Belfast, Bradalbane, Bridgetown, Cardigan Bridge, Charlottetown, Freetown, Georgetown, Kensington, Montague Bridge, Mount Stewart, Murray Harbor South, New Glasgow, Souris East, Stanley Bridge, Summerside, Tignish and Victoria.

In sending money by mail it is always best to transmit by Money Order if possible. If sent by letter it should always be registered.

Money Orders issued and paid from 9 a. m. to 4 p. m.

COMMISSION ON MONEY ORDERS

On Money Orders drawn by any Money Order Office in Canada or any other Money Order Office in the Dominion, is as follows ;

If not exceeding . . .	\$ 2.50 3c
Over \$ 2.50 and up to . . .	5.00 4c
“ 5.00—not exceeding	10.00 6c
“ 10.00 “ “	20.00 10c
“ 20.00 “ “	30.00 12c
“ 30.00 “ “	40.00 15c
“ 40.00 “ “	50.00 20c
“ 50.00 “ “	60.00 24c
“ 60.00 “ “	70.00 28c
“ 70.00 “ “	80.00 32c
“ 80.00 “ “	90.00 36c
“ 90.00 “ “	100.00 40c

On Money Orders payable in Austria, Hungary, Barbadoes, Belgium, British India, Denmark, (including Iceland) France, Germany, Italy, Jamaica, Netherlands (Holland), Newfoundland, New South Wales, Norway, Sweden, Romania, Switzerland, New Zealand, Tasmania, United Kingdom, United States, Victoria and Japan.

If not exceeding . . .	\$ 10.00 10c
Over \$ 10.00—not exceeding	20.00 20c
“ 20.00 “ “	30.00 30c
“ 30.00 “ “	40.00 40c
“ 40.00 “ “	50.00 50c

POSTAL NOTICES

On 20c 1c	On 90c 2c
“ 25c 1c	“ \$1.00 2c
“ 30c 1c	“ 1.50 2c
“ 40c 1c	“ 2.00 2c
“ 50c 2c	“ 2.50 2c
“ 60c 2c	“ 3.00 3c
“ 70c 2c	“ 4.00 3c
“ 80c 2c	“ 5.00 3c

To be had at all Money Order Offices—good in Canada only.

POST OFFICE BOXES

Rent of Boxes	\$ 2.00 per year
“ of Drawers	3.00 per year
“ of Drawers, large	5.00 per year

An order to have letters placed in a Box belonging to another person cannot be recognized unless such letters are addressed to the Box or in care of its holder.

Box holders should be careful only to authorize a limited number of persons to receive their letters, and only those in whom they have full confidence

STREET LETTER BOXES

Corner Queen and Water Streets, Railway Station, King Square, corner Great George and Euston Streets, Rochford Square, corner Kent and Prince Streets, and Upper Prince Street.

Collections made at 6 a. m., 2 p. m., and 8 p. m.

John Macleod & Co.

Merchant Tailors

Have in addition to the largest stock of imported
WOOLENS CARRIED on P. E. Island

A FULL LINE OF FUR COATS

ONLY THE BEST CARRIED

Dress Suits, Wedding Suits, Clerical Suits, Prince Albert
Suits, Business Suits, Boys Suits, Ladies Suits

Made to order at short notice

ALL KINDS OF

FUR LINED OVERCOATS

AND ANY OTHER KIND WANTED

JOHN MACLEOD & CO.

Merchant Tailors and Gents' Furnishing House.

Crown Confectionery Works



W. A. HUTCHESON

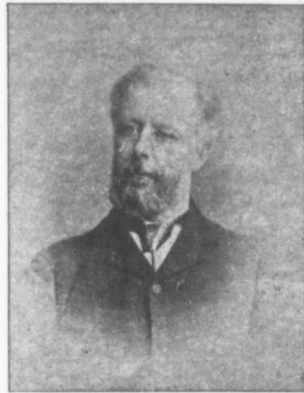
Manufacturing Confectioner

FINE ASSORTMENT OF

*CHOCOLATE CREAMS, BON-BONS, CARAMELS,
PENNEY GOODS, &c.*

North and South Side Queen Square

CHARLOTTETOWN, P. E. I.



HON. SIR LOUIS HENRY DAVIES, K. C. M. G., MINISTER OF MARINE AND FISHERIES

Customs Department

PORT OF CHARLOTTETOWN

Office hours, 9 a. m. to 4 p. m., Saturday, 9 a. m. to 1 p. m.

Collector, James Currie; Asst. Collector, George Bremner; Cashier, A. D. McLeod; Chief Clerk, Edwin White; Clerks, Duncan McNeill, Michael J. Moran, Lucius O. Kelly.

Appraiser, Robert Hogg; Packer, Hector Morrison; Gauger, James D. Lawson; Locker, J. F. Curtis; Measuring Surveyor, Jas. McDonald; Landing Waiters, Ernest DeB. Peake, T. E. Flynn; Preventive Officer, Andrew Sullivan; Messenger, Geo. Walker.

SHIPPING

Registrar, James Currie; Surveyors of Shipping, Artemas Lord, Queen's County, John G. Scrimgeour, King's County; Harbor Master, David Small; Shipping Master, Henry W. Mutch; Custom's Broker, J. W. Hodgson.

OUTPORTS OF CHARLOTTETOWN

Georgetown—Sub-Collector, Charles Owen; Locker and Landing Waiter, William Dalziel.

Souris—Sub-Collector, Fredk. E. Morrow; Preventive Officer, S. P. Campbell.

Crapaud—Sub-Collector, Solomon J. B. Leard.

Montague—Sub-Collector, S. Mutch.

Murray Harbor—Sub-Collector, Henry J. Brehaut.

Murray River—Sub-Collector and Preventive Officer, A. J. McInnis.

Vernon River Bridge—Sub-Collector, Thomas J. Furness.

Orwell—Preventive Officer, Edward Morrissey.

New London—Sub-Collector, Edward McEwen

St. Peter's Bay, Sub-Collector, Charles Waye.

Grand River—Sub-Collector, Peter McMillan.

Cardigan Bridge—Sub-Collector, John McCormack.

Pinette—Sub-Collector, H. D. Merrison

Rustico—Sub-Collector, J. S. Houston.

PORT OF SUMMERSIDE

Collector—Chas. W. Strong; 1st Clerk, Charles Murphy; Preventive Officer, Egmont Bay, Francis Barry.

OUTPORTS OF SUMMERSIDE

Casumpec—Sub-Collector, John P. Brennan; Preventive Officer, William Callaghan, Miminigash.

Port Hill—Sub-Collector, William Hopgood; Preventive Officer, Samuel McArthur.

Tignish—Sub-Collector, Geo. Conroy.

Malpeque—Sub-Collector, Jas. McNutt.

THE
EXAMINER

The Leading Newspaper of Prince Edward Island



The Examiner
Job Printing Rooms

BOOK & JOB PRINTING—All Classes of Work

The Examiner Publishing Company
CHARLOTTETOWN, P. E. I.



The Publication Office of
THE PRINCE EDWARD ISLAND MAGAZINE

DOMINION DEPARTMENTS—Customs—(Continued)

Excise and Inland Revenue Departments

Collector—S. C. Nash, Charlottetown.
Deputy Collector—Theophilus Moore, Charlottetown.
Messenger—George Walker.

The Customs Collectors of Souris, Crapaud, Georgetown, Summerside and Port Hill are authorized to act as Collectors of Inland Revenue, by Order in Council.

Finance Department

Percy Pope, Asst. Receiver General; Wallace Leitch, Accountant; Francis Loughran, Clerk; M. A. Allan, Messenger.

Office open throughout the year. Sundays and public holidays excepted. Office

hours—10 a. m. to 3 p. m. Saturdays—10 a. m. to 1 p. m.

DOMINION CURRENCY

In this branch legal tender notes, silver and copper coin, will be issued and redeemed at any time during office hours.

SAVINGS BANK

Subject to the regulations provided for by Statute, moneys can be deposited upon interest with the security of the Dominion Government, and repayments to be made on demand. Rate of interest allowed, 3 per cent. per annum.

Charlottetown

Balance due depositors July 1st, 1898.....	\$1,843,961.62
Amount added during year.....	328,708.62
	2,172,670.24
Withdrawals during the year.....	372,063.32
Due Depositors July 1st, 1899.....	\$1,800,606.92
Amount held in B 3 $\frac{1}{2}$ and other stocks.....	72,000.00
Total.....	\$1,872,606.92

Marine and Fisheries Department

Agent Marine and Fisheries.—Artemas Lord, Charlottetown; *Foreman of Works.*—Milton Walsh.

J. A. Matheson, Inspector of Fisheries for the Province.

W. C. Hopkirk, for Queen's County.

John Davison, for Prince County.

Daniel Noolan, for King's County.

CLOSE SEASON FOR FISH.

Sea Fish and Eels—None.

Salmon—(License required). 1st September to 31st December, inclusive.

Trout—1st October to 31st March, inclusive.

Reserved Rivers (requiring permit)—Dunk, Morell, Winter, Midgell.

Lobsters—15th July, to 19th April, incl.

Oysters—1st June to 15th Sept., incl.

RECEIVERS OF WRECKS FOR P. E. ISLAND

For King's County, from south side of East Point to Little Sands—M. J. Foley.

Souris. From north side of East Point to Savage Harbor—Philip McCormack, (Post Office Address, Goose River). From the County Line, King's County, to Trout Point, in Hillsborough Bay, Queen's County, including Governor's Island—James A. McMillan.

PORT WARDENS FOR P. E. ISLAND.

Charlottetown, H. P. Walsh; Montague, Geo. Whiteman; Cardigan, W. P. Lewis; Georgetown, Joseph Fairchild; Souris, Uriah Matthew; Alberton, J. T. Weeks; Tignish, Thomas Adams; Pinette, Angus Murchison; Orwell, ————
Crapaud, Solomon J. B. Leard; New London, E. McMillan; Rustico, Thomas Doyle; Murray Harbor, James Clow; Summerside, Joseph Reid.

Dominion Inspectors, &c.

Inspector of Weights and Measures for P. E. Island, Edward Davy, Charlottetown.

Assistant Inspector, Henry Hughes, Charlottetown.

Gas Inspector, R. K. Brace, Charlottetown.


GEO. H. SIMMONS

MANUFACTURER
AND BOTTLER OF



Charlottetown, P. E. I.

Carbonated Beverages

INCLUDING Ginger Ale, Cream Soda, Lemon
 Sour, Sarsaparilla & Soda Water

Fruit Syrups in all the leading flavors constantly on hand

BEST GOODS AT LOWEST PRICES

Special attention given to country trade

PROMPT SHIPMENT GUARANTEED

ACADIA

COAL DEPOT

Queen's Wharf

All kinds of COAL

At lowest market rates

C. LYONS & CO.

DOMINION DEPARTMENTS—(Continued)

P. E. I. Railway Officials

G. A. Sharp, Superintendent; A. McDonald, Chief Clerk; Horace McEwen, Train Dispatcher; G. A. Hughes, Secretary and Assistant Train Dispatcher.

W. T. Huggan, Accountant and Auditor; Geo. A. W. Robertson, Travelling Auditor and Paymaster; C. H. Dingwell, Cashier and Clerk; J. A. Unsworth, Frank Muncey, Clerks.

Harry Houle, Roadmaster.

Mechanical and Stores Department.—S.

F. Hodgson, Mechanical Accountant and Storekeeper; J. J. Chappell, Clerk; R. D. Coffin, Timekeeper and Clerk.

Mechanical Department.—W. S. Poole, Locomotive Foreman; H. S. Coffin, Car Foreman.

Charlottetown Station.—J. L. Thomson, Station Master and Ticket Agent; Henry Fitzgerald, M. McLeod, Freight Clerks; John McPherson, P. V. Robin, Freight Checkers; W. N. Riggs, Baggage Master.

Militia of Canada

PROVINCE OF PRINCE EDWARD ISLAND

Military District No. 12

ACTIVE MILITIA

DISTRICT STAFF

District Officer Commanding—Lieut.-Colonel Fredk S. Moore.
Paymaster—Major G. L. Dogherty.

4th "Prince Edward Island" Regiment
Canadian Artillery

REGIMENTAL STAFF

Honorary Lieut.-Col., Hon. Sir Louis H. Davies, K. C. M. G.; Lieut.-Col. J. A. Longworth; Major, H. M. Davison; Paymaster, Major S. F. Hodgson; Adjutant, Captain F. P. Carvell; Quarter-Master, Major Edmund Cameron; Surgeon-Major, S. R. Jenkins; Surgeon-Lieut., D. A. Stewart; Chaplain, Rev. T. F. Fullerton.

NO. 1 COMPANY, CHARLOTTETOWN

Capt. A. A. Bartlett; Lieut. ———
2nd Lieut. Charles Leigh, jr.

NO. 2 COMPANY, CHARLOTTETOWN

Captain, F. W. L. Moore; Lieut. A. G. Peake; 2nd Lieut. C. C. Richards.

NO. 3 COMPANY, GEORGETOWN

2nd Lieut., Thos. J. Donahoe; 2nd Lieut., Henry Moar.

NO. 4 COMPANY, SOURIS

Captain Donald Leslie; Lieut., J. W. Brennan; 2nd Lieut., *J. P. Leslie.

NO. 5 COMPANY, MONTAGUE

Captain Wellington A. Johnstone; Lieut., R. W. Stewart; 2nd Lieut. ———

Charlottetown Engineer Company

Major William Arthur Weeks; Captain, ———; Lieuts., George M. Moore, J. Harvie Morris; 2nd Lieuts., J. Milton Davison, Harry R. Lordly.

82nd "Queen's County" Battalion of Infantry

Lieutenant-Colonel, Theo. S. McLeod; Major, Daniel Stewart.

REGIMENTAL STAFF

Paymaster, Major John Sheriff; Adjt., Lieut. J. A. McDonald; Quarter-Master, Major Geo. D. Davison; Surgeon-Major, James Warburton, M. D.; Surgeon-Capt., Harry D. Johnson, M. D.; Chaplain, Rev. D. B. McLeod.

NO. 1 COMPANY, CHARLOTTETOWN

Captain, D. L. Hooper; Lieut., *Arthur Mellish; 2nd Lieut., *T. A. Rodd.

NO. 2 COMPANY, POWNAL

Captain, James M. Jones; Lieut. W. E. Smith; 2nd Lieut., J. H. C. Acorn.

NO. 3 COMPANY, CHARLOTTETOWN

Captain, V. L. Goodwill; Lieut., *Lorne Stewart; 2nd Lieut., Thos. A. McLean, jr., *prov.*

NO. 4 COMPANY, LITTLE YORK

Major George Crocket; Lieut., W. E. F. Hardy; 2nd Lieut., J. M. Crockett, *prov.*

NO. 5 COMPANY, BROOKFIELD

Captain, Angus Beaton; Lieut., Wm. G. Darke; 2nd Lieut., Oxenham, *prov.*

NO. 6 COMPANY, COVEHEAD

Captain, John Allan; Lieut., James W. Shaw; 2nd Lieut., M. A. Shaw.

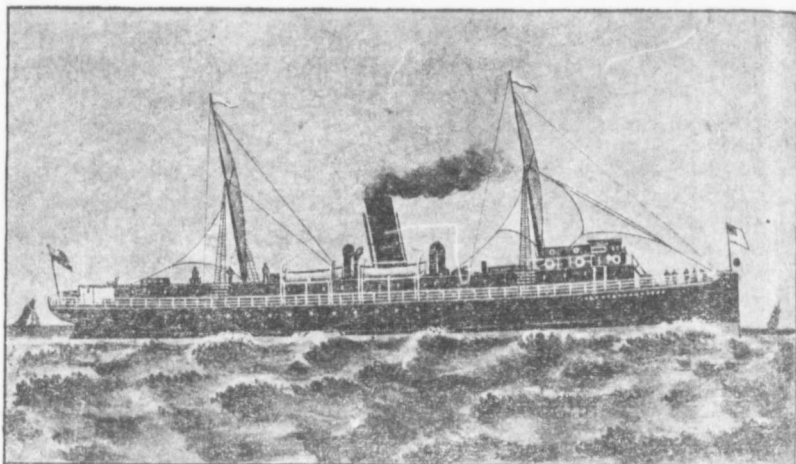
NO. 7 COMPANY, ALBERTON

Captain. ———; Lieut Albert E. Forsyth; 2nd Lieut., L. B. Leard.

NO. 8 COMPANY, TRYON

Captain, Freeman Boutler; Lieut. ———; 2nd Lieut., Alexander Wood, *prov.*

* Resigned to enlist in South African Contingent.



PRINCE EDWARD ISLAND Fast Daily Service

In connection with Trains for

Boston and United States, Montreal, Canada and the West

The Charlottetown Steam Navigation Co., Limited

Steamers "NORTHUMBERLAND" and "PRINCESS"

Leaves as below every Day, Sundays excepted

From POINT DU CHENE (on arrival of train from St. John) for SUMMERSIDE connecting there with express train for Charlottetown.

From SUMMERSIDE (on arrival of morning train from Charlottetown) for POINT DU CHENE, connecting there with day train for St. John.

Connecting at MONCTON with Railway for Canada, and at St. John with Steamers of International Line for Boston, and Railways for United States and Canada.

Time from CHARLOTTETOWN to BOSTON or MONTREAL is only 24 hours. Returning, BOSTON or MONTREAL to CHARLOTTETOWN, 27 hours. From PICTOU (on arrival of day train from Halifax) for Charlottetown. From CHARLOTTETOWN, at 6 a. m., standard, for Pictou connecting there with train for Halifax.

Connection made at STELLARTON by Intercolonial Railway with EASTERN NOVA SCOTIA and CAPE BRETON.

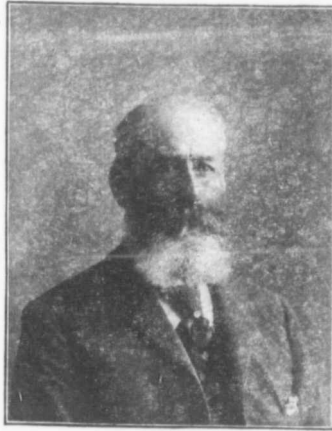
Time CHARLOTTETOWN to SYDNEY 14 hours.

Connection at HALIFAX with CANADA ATLANTIC LINE, STEAMERS for BOSTON, also with DOMINION ATLANTIC RAILWAY, WINDSOR, YARMOUTH, etc.

Through Ticket to be had at Grand Trunk, Canadian Pacific, Intercolonial, Dominion Atlantic Railways and on Company's Steamers and all connecting lines.

CHARLOTTETOWN

F. W. HALES, SECRETARY



HONOURABLE DONALD FARQUHARSON, PREMIER

Province of Prince Edward Island

ENTERED CONFEDERATION 1ST JULY, 1873

Population (1891) 109,978

LIEUTENANT GOVERNOR

His Honor Dr. Peter Adolphus McIntyre, (Appointed 23rd May, 1899, sworn at Charlottetown 1st June, 1899.)
Private Secretary.—John Davies.

PREVIOUS LIEUTENANT GOVERNORS SINCE CONFEDERATION

W. C. Robinson, Esq., until 10th November, 1873.

Sir Robert Hodgson, Kt., appointed 19th November, 1873, died Sept. 15, 1880.

Hon. Thos. Heath Haviland, appointed 14th July, 1879, died Sept. 17th, 1895.

Hon. Andrew Archibald Macdonald, appointed 1st of August, 1884.

Hon. Jebeclah Slason Carvell, appointed 2nd Sept. 1889, died 14th Feb. 1894.

Hon. Geo. W. Howlan, appointed 24th February, 1894.

EXECUTIVE COUNCIL

The Hon. Donald Farquharson, *Premier and President.*

Hon. D. A. McKinnon, *Attorney General.*

The Hon. Angus McMillan, *Provincial Secretary-Treasurer and Commissioner of Public Lands.*

The Hon James R. McLean, *Commissioner of Public Works.*

Honorable Peter Sinclair,

“ Peter McNutt,

“ James W. Richards,

“ Benj. Rogers, Ch'town

“ A. McLaughlin.

Clerk—Arthur Newbery.

Without portfolios

PROVINCIAL GOVERNMENT OFFICERS

Attorney General—

Provincial Secretary-Treasurer and Commissioner of Public Lands—Hon. Angus McMillan.

Assistant Provincial Secretary-Treasurer and Clerk of Executive Council—Arthur Newbery.

Clara E. Cuddy, *Clerk.*

C. C. McNeill, “

Land Office, Thomas May—*Draughtsman, James Dalling*—*Clerk.*

Commissioner of Public Works—Hon. James R. McLean.

Secretary of Public Works—Richard Smith.

Draughtsman—H. C. McMillan.

Provincial Auditor—Benj Balderson.

Chief Superintendent of Education—D. J. McLeod.

Clerk to do—Ewen S. McPhail.

Stenographer, Typewriter and Librarian—W. H. Croskill.

Assistant do—Miss Minnie Smith.

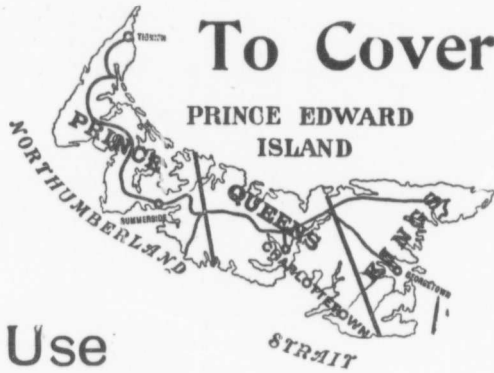
Registrar of Deeds—Wm. C. White.

Assistant Registrar of Deeds—M. Laverty.

Clerks—A. Callaghan, J. C. McKenzie.

Keeper Provincial Building—Duncan Kennedy.

Messenger to Public Offices—Louis B. McMillan.



Use

THE DAILY
AND WEEKLY

PATRIOT

Those who advertise in the Daily and Weekly Patriot reach a larger and better class of P. E. Island readers that can be reached through any other channel. The Weekly Patriot in particular is an excellent advertising medium to secure the patronage of farmers and others residing in the country.

SUBSCRIPTION PRICES

WEEKLY (24 pages) \$1.00

DAILY (8 pages) 2.00

Well equipped JOB OFFICE in connection



THE PATRIOT PUBLISHING CO.,

Cameron Block, Victoria Row, - Charlottetown, P. E. I.

PROVINCE OF PRINCE EDWARD ISLAND—(Continued.)

LEGISLATIVE ASSEMBLY OF P. E. ISLAND

Speaker—HON. J. H. CUMMISKEY.

DISTRICT	COUNCILLORS	ASSEMBLYMEN
QUEEN'S COTNTY		
<i>Ch'town Common and Royalty</i>	Hon. Benjamin Rogers.....	L. E. Prowse
<i>First District</i>	Hon. Peter Sinclair.....	William Campbell
<i>Second District</i>	Hon. D. Farquharson.....	Joseph Wise
<i>Third District</i>	J. H. Cummiskey.....	Hon. F. Peters
<i>Fourth District</i>	George Forbes.....	A. A. McLean
KING'S COUNTY		
<i>First District</i>	J. Kickham.....	Hon. Jas. R. McLean
<i>Second District</i>	Hon. A. McLaughlin.....	Arthur Peters
<i>Third District</i>	James E. McDonald.....	Cyrus Shaw
<i>Fourth District</i>	Murdoch McKinnon.....	A. P. Prowse
<i>Fifth District</i>	Hon. D. Gordon.....	A. J. McDonald
PRINCE COUNTY		
<i>First District</i>	J. Pineo.....	J. E. Blanchard
<i>Second District</i>	A. McWilliams.....	Hon. J. Richards
<i>Third District</i>	John McDonald.....	Jos. O. Arsenault
<i>Fourth District</i>	Hon. Peter McNutt.....	S. E. Reid
<i>Fifth District, Summerside</i>	Hon. A. McMillan.....	G. DeRoche
Clerk—A. B. McKenzie		

The Magistracy

JUSTICES OF THE PEACE THROUGHOUT THE ISLAND.

Hon. William Wilfred Sullivan, Chief Justice	Richards, Peter Sinclair.
Hon. Edward Jarvis Hodgson, Asst. Judge	
Hon. Rowan R. Fitzgerald, Asst. Judge	
Hector C. McDonald, Judge of Queen's County Court.	William A. Weeks, Clerk of the Crown; F. L. Haszard, Q. C. Charlottetown; H. James Palmer, Stipendiary Magistrate, Charlottetown; Stanislaus Blanchard, Charlottetown, J. P. for whole Island
Hons. D. Farquharson, Anthony McLaughlin, Peter McNutt, Benjamin Rogers, Charlottetown; Angus McMillan, J. R. McLean, J. W.	

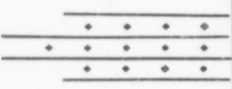
STIPENDIARY MAGISTRATES

Queen's County—H. James Palmer, Charlottetown
 Prince County—Henry E. Wright, Summerside
 King's County—Stanislaus Blanchard

JUSTICES OF THE PEACE

QUEEN'S COUNTY	
Alexandria, John Cullen	Alex. Brown, Artemas Lord, Richard Johnson, M. D., Bernard O'Callaghan, Thomas Handrahan, Joseph Knight, James Reddin, Archibald Kennedy, Samuel McRae, Frank D. Beer, M. D., Frederick W. Hughes, Henry Davison, James McDonald, Charles Smalwood, John Newson, Alexander Horne, John T. Mellish, Daniel Rearden, Thomas A. Warren, John McEachern, John W. Hodgson, John F. Robertson, Lucius O. Kelly, Fred. W. Hyndman, Hedley V. Palmer, Henry Smith, E. Hubert Beer, Hector C. McDonald, Jas. Patterson, H. James Palmer, Stip. Magistrate, Stanislaus Blanchard, Frederick De St. C. Brecken, J. P. for the whole Province, Charles Warren, Royalty.
Argyle Rear, Murdoch McLeod	Corran Ban Bridge
Argyle Shore, Malcolm McPhail, William McDonald	China Point, Thomas Crane
Auburn, Peter Lavery, James Trainor	Clinton, William Mayne
Avondale, John Hooper	Clifton, William Ross, George B. McKay
Bay View, John Simpson, Arthur Simpson	Clyde River, Allan McLean
Belle Creek, Joseph Saunders	Cornwall, Jacob Bain
Blooming Point, Charles C. McDonald	Culloden, Angus McLean
Bonshaw, James A. Robertson	
Brackley Point Road, Jonathan McWilliams,	
Buncean McCallum, Alex. Scott, Isaac Essory	
Brackley Point, John McCallum	
Bundaibane, Malcolm Matheson, John McLeod	
Bookfield, Lawrence Buchanan, Thomas Johnston	
Caledonia, William McPherson	
Cavendish, Wm. J. Simpson	
Charlottetown, Fredk. W. Hales, John Ings,	
Hon. Benjamin Davies, Richard Heartz,	
T. W. Dodd, D. R. M. Hooper, J. D. Mason, W. E. Dawson, J. T. Jenkins, M. D.	

The Guardian

	DAILY (Every Morning), \$4.00
	WEEKLY (Every Thursday), \$1.00
	SEMI-WEEKLY (Monday & Thursday), \$1.25

THE DAILY (Illustrated, 8 to 12 pages every morning), circulates extensively in the towns, cities and villages, and in many homes in the country.

THE WEEKLY (Illustrated, 10 to 12 pages, every Thursday), is very largely circulated and is most popular amongst the Farmers, reaching every section of the Province.

THE SEMI-WEEKLY (Illustrated, 4 to 8 pages, every Monday and Thursday), is read by people who like the news twice a week.

...THE GUARDIAN...

Advocates all measures of a progressive character, fearlessly and judiciously and pays special attention to all news, notably local events. It reaches the influential and wealthy classes and is read by everybody.

A Home Newspaper.

No "Dead" Advertisements.

Independent in Politics

Special Attention to Advertisers.

Job Printing in Connection.

Sample Copies, Advertising Rates, and Sworn
Statements of Circulations Furnished on Application.

The Island Guardian Publishing Company

J. P. Hood, Mgr.

Publishers.

W. N. Tanton,

Charlottetown. - P. E. Island.



Watchmaker and Jeweler

WE HAVE

A BEAUTIFUL ASSORTMENT OF
Watches

FOR LADIES AND GENTLEMEN

Our stock in this line is larger and prices lower than ever they have been. We handle none but reliable time-keepers and guarantee every one we sell.

It is a pleasure to show them, and we are sure that we can save you \$\$\$ & \$\$\$

W. N. TANTON,

Great George St.
3 doors from Grafton St.

Jeweler.

PROVINCE OF P. E. I.—JUSTICES OF THE PEACE—(Continued)

- Covehead, David Landrigan
 Covehead Road, James McGrath
 Covehead West, William Shaw
 Crapaud, John Moore, Solomon J. B. Leard,
 Matthew Smith, Oliver B. Wadman, Anthony
 Collett, John S. McQuarrie, Crisp Moore
 Darlington, Donald E. Campbell
 Dawson's Grove
 DeSable, John Currie
 Dunstaffnage, Henry M. McLeod, William
 Thompson
 Eldon, Alexander McMillan, James St. C.
 Moore, James Nicholson
 Elliot River, Andrew Dickieson, Theoph. A.
 Stewart, David McEwen
 Emyvale, James Hughes, Daniel G. McDonald,
 Patrick McArdie
 Emerald, James McDonald, Albert Craig
 Flat River, William Ross
 Fort Augustus, Michael Laverty
 Fredericton, James Stevenson
 French River, Albert Simpson
 Earnscliff, Walter Morrisey
 Garbala, Angus McDonald
 Glenfinnan, Alexander McDonald
 Glenaladale, John Archibald McDonald
 Graham's Road, Geo. Malle, Jas. A. Campbell
 Grand View, Donald Gillis
 Granville, Cyrus W. Morris
 Green Bay, Lot 65, Patrick Malone
 Greenvale, Simon Brown
 Green Marsh, Donald McKay
 Hampton, William Patrick
 Hartsville, Neil McKay
 Hope River, John C. Clark, Joseph Harrington,
 Peter McGuigan
 Hunter River, Peter McGrath, John D. McLeod,
 William Honeywell, M. D.
 Irishtown, Richard Ready
 Johnson's River, John McDonald, (Alex. son)
 James McKenna, John M. Jenkins, W. J.
 Brazil
 Kelly's Cross, Francis Bradley, John Bradley
 Kinross, David Ross, John F. McLeod, Donald
 McLeod (Stonehouse)
 Long Creek, James McLean, Neil S. McKenzie
 Long River, Donald Cameron
 Lot 48, Robert Stewart, John Wood, Patrick
 Dunlop, John Wood (Leonard's son)
 Margate, William J. Caldwell
 Marshfield, Donald Ferguson, Roderick Munn,
 William J. Gibson
 Middleton, Ewen McKenzie
 Milcove, John Hughes, Phillip Hughes, James
 Trainor
 Millview, Peter M. Bourke
 Milton, John R. Hooper, Neil McNeill
 Montague Cross, Lot 58, William Walsh, Ed.
 Redmond
 Mount Albion, Benjamin Jenkins, Robert Jen-
 kins
 Mount Stewart, James Ross, John R. Bourke,
 Wm. J. Logan, Augustine McDonald, James
 R. McEwen, Montague Pigot
 Murray Harbor Road, John McPherson, Roder-
 ick McDonald
 New Glasgow, John Biens, Arthur B. Dickieson,
 George Houston, Louis Pino
 New Haven, Ewen McMillan, John E. Dever-
 eux, Robert A. McPhail
 North Milton, Norman McDonald, Jos. Wise
 North River, Wm. F. Fraser, Neil Matheson,
 Hector Murchison
 North Pinette, Neil McLeod
 North Rustico, Wm. G. Houston
 North Wiltshire, John Balderson, John Stew-
 art, John Deacon, A. Tremere
 Orwell, Donald McLeod (Stonehouse)
 Orwell Cove, Edward Morrisey, Ronald Mc-
 Donald
 Oyster Bed Bridge, George Matheson, Duncan
 McMillan
 Park Corner, Wm. Campbell, Wm. Ramsay,
 John S. Cousins
 Pleasant Valley, Daniel Bain
 Pinette, Neil McDonald
 Pisquid, John McQuaid, John McDonald
 Pisquid Road, Patrick O'Donnell, Michael
 Curran
 Point De Roche, Pius McCormack
 Point Prim, John Murchison, Charles McLeod,
 Roderick McRae
 Pownal, Richard Smith, Locke Jones, Edward
 Wood, Albert Boswall
 Rice Point, Wm. Lowther, Dougald McEachern
 Riverdale, John J. McLeod
 Rocky Point, John Smith
 Rona, Norman McKenzie
 Rose Valley, Donald McKenzie, John McLeod
 Scotch Fort, James A. McDonald
 Southport, Henry Bourke, James W. Kennedy,
 John McGregor, James Duffy
 South Shore, Thomas E. Murphy
 South Wiltshire, Charles Colwill, Wm. Barret
 Springfield, Peter Sinclair, Benjamin Haslam
 Springton, Donald Cameron, Allan Martin,
 Donald A. Nicholson, Malcolm Stewart, Chas.
 L. McDonald
 Stanley Bridge, Roderick McNeill
 Stanhope, Peter Brodie, Henry C. Lawson,
 Bruce Leich, Duncan Shaw
 Strathgartney, Robert Bruce Stewart
 St. Catherine's, Alex. C. Shaw, Angus H. Mc-
 Fayden, James McNeill
 St. Patrick's, James McAleer
 St. Peter's Road, William Thompson
 Surrey, Belfast, Murdoch A. Buchannan
 Tracadie Cross, Angus C. McAulay, Thomas A.
 Dougan
 Uigg, Malcolm Campbell
 Union Road, Lot 33, F. Essory
 Vernon River, Lemuel C. Hayden, Charles Mc-
 Millan
 Vernon River Bridge, George Forbes, David P.
 Irving
 Victoria, Donald W. Palmer, Henry Wadman
 Village Green, Alexander McNeill
 Webster's Corner, James H. Cumiskey
 Western Covehead, David H. Auld
 West River, Ewen McMillan, Theoph. A.
 Stewart
 Wheatley River, John Raekham
 Winsloe Road, William J. Bryenton
 Wisner's Mills, (Monaghan's P. O.), Jas. Wisner
 Wood Islands, Duncan Crawford, Archd. Mc-
 Isaac, James A. McMillan, Donald Munn
 Winsloe Station, Arthur W. Holroyd, Fred. H.
 Horne, Charles Taper
 York, Robert Lawson, George Vessoy
 STANISLAUS BLANCHARD, Charlottetown, Q. Co.
 J. P. for the whole Province

PRINCE COUNTY

- Alberton, R. R. Reid, Allan F. Matthews, Geo.
 R. Montgomery, John P. Brennan, Joseph
 H. Cunningham, Alexander McDonald, Jas.
 Wiggins, John T. Weeks, David Hunter,
 George M. Clark
 Arlington, John McKinnon
 Augustine Cove, Benjamin Webster, Major H.
 Clark, George W. W. Cameron
 Albany, Gilbert Bell
 Baltic
 Bedeque, Alfred Schurman, Art. Hooper, A.
 E. C. Holland, John J. Wright, Curtis Lord,
 Malcolm McFarlane
 Brae, William T. Rogers
 Belmont, Donald Campbell, Samuel Simpson
 Burlington, John Champion, Fredk. Davison
 Bideford, Albert Williams, Wm. Richards
 Bloomfield, John C. Doiron, Joseph E. Peters
 Clarke's Mills, Lot 19, Stephen S. Heustis
 Conway, Augustine Callaghan
 Campbellton, Archibald O'Halloran, James C.
 McKendrick
 Cape Egmont, Elzeas Gallant

PROVINCE OF P. E. I.—Justices of the Peace—(Continued)

- Cape Wolfe, Jonathan Blanchard
 Cape Traverse, Josiah Howatt, John D. Muttart, James Gillispie, John Driscoll, Ephraim Bell
 Cascumpec, Thomas E. Hogan
 Carleton, Isaac Wright
 Coleman, Angus McKinnon
 Darnley, Alexander McKay
 DeBiols, John Perry
 Dock Road, John McCarthy, Thomas Coughlan
 Egmont Bay, John O. Arsenault, Sylvan Arsenault, Edwin Darby, Sylvanus Gallant, Elzeas Gallant
 Ellerslie, William Walsh
 Elmsdale, Thomas McNeill, James O'Brien
 Fifteen Point, John Perry, Aime C. Richards
 Fortune Cove, John Clark
 Freehand, James Henderson
 Freetown, David Rogers, James H. Crossman
 Hamilton, William Simpson, Robert Crosier
 Huntley, Henry Gordon
 Hernewood,
 Indian River, John A. McDonald
 Ken-ington, D. Darrach, John T. Mullin, Edwin Proctor, John Sharpe
 Kildare, Thomas Cahill, Michael Fitzsimmons
 Kildare Capes, William T. Clark, Thaddeus W. Traverse
 Kinkora, Philip McCarvill
 Knutsford, Isaac Harris
 Linkletter Road, Otis W. Gamble
 Lower Freetown, Stewart Burns
 Lot 7, Theodore Wright, Peter Doyle
 Lot 12, William McIntosh
 Lot 13, Francis Dogherty, Philip Williams
 Lot 27, Owen Hughes
 Margate, Frank Glyden, Wm. J. Caldwell
 Malpeque, Peter McNutt
 Maple Plains, Patrick Walsh
 Milburn, J. J. McWilliams
 Mill River, Christopher Motherell
 Miminegash, Wm. Callaghan, Lawrence Doyle, Samuel Metherell
 Miscouche, H. V. DesRoche, Charles Ives
 Mount Pleasant, George Bollum
 Muddy Creek, Moses A. Gaudet, Benjamin C. Allan
 Nail Pond, Napoleon Gallant
 New Annan, Edward J. Wright
 Norborough, Alexander Douglas
 Norway, Lot 1, Martin A. Doyle
 Northern Station, David Stewart
 North Bedeque, James Carruthers, Fenwick LeFargey
 O'Leary, Robert Ellis, D. McLaughlin, M. D., P. N. Pate, James Barclay, James A. Webb
 Palmer Road, Francis P. Gallant
 Plusville, Alpheo Wedge
 Princetown,
 Port Hill, John Yeo, James Yeo, Geo. Enman, Francis Dogherty, Thomas Adams, William Hopgood, John McArthur, D. C. Ramsay
 Richmond, John McIsaac
 Sea Cow Head, Charles McFarlane
 Sea Cow Pond, Patrick H. Morrisey
 Seawletown, Dugald S. Wright
 Summerset, Peter Duffy, Michael H. McCabe, John T. Murphy, John O'Connaghan
 Southwest, Roderick W. McLean
 South Shore,
 St. Eleanor's, Robert H. McDonald, E. E. Compton, George Compton, A. E. Holland, Major Jones
 Springfield, Lot 8, Augustine Cain
 Summerside, Neil McLeod, Judge of the County
 Court of Prince County, Neil McQuarrie, Stip. Mag., Henry E. Wright, Stip. Mag., Harry C. Green, Charles Green, David Montgomery, James Muirhead, Wm. T. Hunt, John Clay, Hugh J. Massey, Leonard Morris, Richard Hunt, Arch. McIntosh, W. H. Brown, John Ramsay, Donald Currie, George Godkin, William H. Brown, jr., William K. McKay, Joseph Murphy, William Gregor
 Sunnyside Mills, Lot 14, D. J. McDougall
 Tignish, A. J. Gaudet, J. Gaudet, B. B. Waite, Joseph E. Richards, Charles Dalton, Edward Hackett
 Tryon, Henry Dawson, Michael Delaney, J. Hodgson, John N. Leard, Robert Leard, Wm. C. Lea, Adam Morrison, S. E. Reid
 Tyne Valley, William H. Hopgood, Daniel N. Forbes
 Union Road, Phileas Buote
 Waterford, Peter A. Shea, J. A. Foley
 Wellington, Patrick Ayers, L. A. Arsenault, M. Gallant, Stanislaus Blanchard
 West Point, J. Auld
 West Cape, Alfred McWilliams, Jos. McNeill
 Wilmot Bridge
 Wilmot Creek, C. R. Road
 Wilmot Valley, George Clark
 West Devon, James Grigg, Jos. Morshead
- KING'S COUNTY
- Annandale, Lot 56, John Howlett
 Baldwin's Road, Robert Currie, James Moar, Henry Trainor
 Baldwin Station, James F. Kenny
 Baltic, Robert Matheson
 Bangor, John McGregor
 Bay Fortune, Chas. Aitken, Chas. Dingwell
 Bear River Road, Donald H. McDonald
 Big Marsh, Archibald McPhee
 Beach Point, William Harris
 Brudenell River,
 Brudenell, Wm. Gordon, Alex. G. Robertson
 Brooklyn, George H. Hume, Wm. Compton, Angus McDonald
 Brown's Creek, Angus McLeod, Samuel M. Martin
 Byrne's Road, Peter Duffy, Bernard Connolly, James Phelan
 Cable Head, James A. McKinnon
 Cardigan Bridge, Wm. P. Lewis, George F. Owen, John G. Scimegour, John F. Norton
 Caledonia, Norman McLeod, James Walker, Kenneth Martin
 DeGros Marsh, Roderick A. Campbell
 Donnelly Road, John A. Dougan
 Dundas, Archd. D. Matheson
 Drouse's Road, Alex. McLeod
 East Point, Alex. R. Beaton, James A. Beaton, Laughlin McDonald
 Elliotvale, Patrick W. Koughan
 Elmira, Malcolm J. Campbell
 Fairfield, Richard Garret, John J. McIntyre
 Forest Hill, John McLeod
 Georgetown, James Burke, John Duff, James Easton, William Easton, Joseph Fairchild, Daniel Gordon, Thos. Henry, Michael Hession, Charles Owen, Geo. A. Parker, Alex. C. Stewart, Charles Johnson
 Glencorradale, Lot 46, Neil McPhee
 Glen William, Lot 64, Archd. McDonald, Alex. M. Matheson
 Grand River, Charles Clay, Ronald McCormack
 Green Vale, Michael Mooney
 Greenwich, Edwin Coffin
 Hazel Green, Robert Myoney
 Head of Hillsborough, E. B. Alleyne, William H. Douglas
 Hernalville, Joseph D. McCormack, John Alfred McDonald
 High Bank, Donald McLeod
 Little River, John C. Underhay
 Launching, Michael D. McCormack
 Lot 63, Andrew Miller
 Lower Montague, George A. Poole
 Little Sands, Angus McPhee, John D. Matheson, John A. Gillis
 Milltown, Lot 40, Alexander Cobb
 Montague, Geo. B. Aitken, Thomas Annear
 Marie, George H. Dingwell, Kemble Webster, James H. Dingwell
 Montagne Bridge, D. G. Cameron, Donald McLeod, Samuel Mutch, Manoh Rowe, George

PROVINCE OF P. E. I.—Justices of the Peace—(Continued)

Whitman, William Leith Poole
 Monticello, James McDonald
 Midgell, Oliver Anderson
 Morell, Wm. Hooper, Robert N. Cox, Wm. Sterns
 Mount Hope, Alex. McDonald, Allan Robertson
 Mount Stewart, James R. McEwen, Hamilton Coffin
 Morell West,
 Murray Harbor North, William Reid
 Murray Harbor South, John Cowan, John Kielly, John Spurgeon Forbes
 Murray River, Henry A. Bears, Robert White-way
 Midgell Mills, Charles H. VanDerstine
 New Perth, John McMillan
 Narrows Creek, Michael D. McDonald
 North Lake, William H. Morrow
 Peake's Station, Patrick Mooney, Hugh Currie, Anthony McLaughlin
 Peter's Road, Isaac A. Bears, Noah Godfrey
 Priest Pond, James McFarlane
 Red Point, Alex. Robertson, Cyrus N. Stewart
 Rollo Bay, Alex. Bourke, Alex. Campbell
 Savage Harbor, James McDonald
 Souris East, Archd. Currie, Michael McCormack, George B. McEachern, Peter A. McIntyre, Jas. R. McLean, Frank H. White,

R. F. McDonald
 Souris West, Richard Hayes, Jas. A. McInnis, John Mulally
 South Lake, Alex. Fraser
 Souris River,
 Sparrow's Road, William J. Sullivan
 St. Mary's Road, John M. Hughes, Peter Gormely
 Sturgeon, John Jamieson
 St. Margaret's, Paul McPhee, Jos. L. McPhee
 South Side St. Peter's Bay
 St. Peter's Bay, Lestock Anderson, Anthony McCormack, John T. McKay, Andrew Lewis, Crawford Hayden, Charles VanDerstine
 St. Peter's Bay (Head), John Webster
 St. Peter's (West), Donald H. McKay
 St. Peter's Lake, John McDonald
 St. Peter's Road
 Somerville, P. J. D. Edmunds, James Doyle, Patrick Walsh, James Wickham
 Union Road, Lot 51, Fred Robertson Mellish
 Upton, Lot 55, Alex. Matheson
 White Sands, Lot 61, Benj. Beck
 West River,
 Whim Road, Duncan Fraser, Donald Nicholson, John N. McDonald
 Whim Road Cross, John McKinnon

LAW AND JUSTICE DEPARTMENT

COURT OF APPEAL

The Hon. William Wilfred Sullivan, Chief Justice; the Hon. Edward Jarvis Hodgson, Master of the Rolls; the Hon. Rowan R. Fitzgerald, Vice Chancellor; William Arthur Weeks, Registrar.

COURT OF CHANCERY

Hon. Edward Jarvis Hodgson, Master of the Rolls; Hon. Rowan R. Fitzgerald, Vice Chancellor; Edward Bayfield, W. A. O. Morson, John A. Longworth, Duncan C. McLeod, Francis L. Haszard, Wm. T. Hunt, Masters and Examiners; Ephraim R. Brow, Master Extraordinary; William Arthur Weeks, Registrar; Counsellors and Solicitors—The Barrister and Attorneys of the Supreme Court; Roland Meikle, Crier and Tipstaff.

TERMS OF THE COURT OF CHANCERY

Hilary Term, first Tuesday in February; Trinity Term, last Tuesday in May; Michaelmas Term, third Tuesday in November.

EXCHEQUER COURT OF CANADA

(P. E. I. Admiralty District)

Hon. W. W. Sullivan, Judge; J. A. Longworth, Registrar; E. B. Muttart, M. D., Souris, Commissioner for taking Affidavits; Fred. W. Hyndman, Marshal; Roland Meikle, Crier and Doorkeeper.

COURT OF PROBATE AND WILLS, &c.

Richd. Reddin, Surrogate; John G. J. Weldon, Registrar; Proctors and Advo-

cates—the Attorneys and Solicitors of the Supreme Court.

SUPREME COURT

Hon. W. W. Sullivan, Chief Justice.
 Hon. E. J. Hodgson, Judge.
 Hon. R. R. Fitzgerald, Judge
 Hon. ———— Attorney General.
 William Arthur Weeks, Clerk of the Crown.
 John A. Longworth, Prothonotary.
 Wm. A. Weeks, Deputy Prothonotary, Queen's County.
 Wm. H. Crosskill, Stenographer.
 William T. Hunt, Deputy Prothonotary, Prince County.
 Geo. A. Aitken, Deputy Prothonotary, King's County.
 Charles Palmer, F. De St. C. Brecken, Queen's Counsel.

QUEEN'S COUNSELS UNDER THE GREAT SEAL OF THIS PROVINCE

Malcolm McLeod, Sir L. H. Davies, Hon. F. Peters, F. L. Haszard, W. A. O. Morson, A. A. McLean, W. S. Stewart, H. J. Palmer, Arthur Peters, Edward Bayfield.

SHERIFFS

Walter B. Robertson, Charlottetown, Sheriff of Queen's County.
 D. S. Wright, Centreville, Bedeque, Sheriff of Prince County.
 Daniel F. McDonald, Montague, Sheriff of King's County.

PROVINCE OF P. E. I.—Law and Justice Department—(Continued)

TERMS OF THE SUPREME COURT

Queen's County.—Hilary Term commences on the second Tuesday in January. Easter Term commences the first Tuesday in May. Trinity Term commences on the last Tuesday in June. Michaelmas Term commences on the first Tuesday in November.

King's County.—At Georgetown on the last Tuesday in February and third Tuesday in July.

Prince County.—At Summerside on the second Tuesday in June and first Tuesday in October.

COMMISSIONERS ABROAD FOR TAKING AFFIDAVITS IN THE SUPREME COURT TO BE USED IN THIS PROVINCE

London, England.—James Hume Dodgson, Solicitor; Philip Henry Cox, Solicitor; Wm. B. N. Bird, 5 Grey's Inn Square; Edward W. Nunn, Solicitor; Arthur Poland, Solicitor; Joseph Crose Colman, C. M. G., High Commissioner's Office for Canada; Henry A. Sanders, Solicitor, 3 & 4 Great Winchester Street; Charles Russel, Solicitor, 37 Norfolk Street, W. C.; Edward F. Day, 37 Norfolk Street, W. C.

Liverpool, England.—John H. S. Dyke, Canadian Government Emigration Agent; Thomas R. Pennington, Solicitor, Cross-hill Street.

Plymouth, England.—Coryndon Matthews, Frankfort Chambers, Frankfort Street.

Edinburgh, Scotland.—Andrew Newlands, Solicitor, 4 York Place.

Glasgow, Scotland.—William B. Paterson, 101 St. Vincent Street; Thomas C. Young, LL. B., 93 West Regent Street.

Boston, Mass.—Charles A. Shaw, No. 11 Court Street; Charles Hall Adams, No. 5 Court Street; Percy W. Carver, Counsellor-at-Law; William L. Strickland, Counsellor-at-Law, 83 Water Street; Arthur R. Torrey, 23 Court Street.

New York.—Joseph B. Braman, Counsellor and Attorney, 115 Broadway; Jas. C. McEachern, 303 Broadway; John J. Ward, Solicitor, 314 Broadway; Walter S. S. Langeman, Notary Public, 21 Park Row.

Chicago, Ill.—Philip A. Hoyne, 52 and 53 Customs Building; William S. Pettegrew, 91 Dearborn Street, William H. F. Holmes, Solicitor, &c.

Philadelphia, Penn.—Thomas J. Hunt, 623 Walnut Street.

Montreal, Quebec.—Geo. R. Locker, 64

Victoria St; Samuel C. Fatt, No. 18 St. Alexis Street; Charles C. de Lorimier, Q. C., 114 St. James Street; Duncan I. McDougall, 24 St. Sacramento Street; Albert E. de Lorimier, St. James Street; James G. Ross, 18 St. Alexis Street; William A. Caldwell, 44 St. Sacramento Street; John Hyde, 181 St. James Street; Edmund Guerin, William H. Burrows; No. 11 Place D'Almes Square.

Quebec, Quebec.—Edouard G. Angers, Francis Xavier Gosselin, 61 St. Peter's Street.

Victoria, B. C.—Henry P. Blanchard.

Halifax, N. S.—James Jack.

St. John, N. B.—James Jack.

Ottawa, Ont.—John J. McGee, Clerk of Privy Council.

COMMISSIONERS FOR TAKING ACKNOWLEDGMENTS TO DEEDS

ABROAD

London, England.—Edward F. Day, Alfred Heales, Philip H. Cox, James H. Dodgson, Wm. B. M. Bird, Edward W. Nunn.

Glasgow, Scotland.—Wm. B. Paterson.

Edinburgh, Scotland.—Andrew Newlands.

Montreal.—John Hyde, John Popham, John S. Hall, John D. Davison, Philip S. Ross, George R. Locker, Chas. C. de Lorimier, Albert E. de Lorimier, James G. Ross.

Quebec.—W. H. Burroughs, Edward J. Angers.

Ottawa.—John J. McGee.

Halifax, N. S.—James Jack.

St. John, N. B.—James Jack.

Victoria, B. C.—Henry P. Blanchard.

Boston.—Joseph A. Harris, Alfred D. Foster, Charles A. Shaw, Charles H. Adams, 23 Court St.; Joseph B. Braman, Wm. L. Strickland, Arthur R. Torrey.

Chicago.—Wm. S. Pettegrew, Philip A. Hoyne.

New York.—James C. McEachern, John James Ward, W. L. S. Langeman.

Cambridgeport, Mass.—Percy W. Carver

PRINCE COUNTY

Robt. Leard Lot 28; S. E. Gallant, Egmont Bay; Major Wright, Centreville. Murdoch Ross, Lot 25; James Barclay, Lot 12; John Sharp, Lot 19; Isaac Clark, Lot 28; John O'Connor, Lot 14; Honore V. DesRoches, Miscouche; A. E. Holland, St. Eleonors; Dougal C. Ramsay, Lot 13; Henry E. Wright, Wm. T. Hunt,

PROVINCE OF P. E. I.—Law and Justices Department—(Continued)

John Clay, Hugh J. Massey, Neil McQuarrie, James E. Wyatt, Leonard Morris, John H. Bell, Kenneth J. Martin, Richard Johnston, Summerside; Richard B. Reid, John P. Brennan, Charles A. Woodman, James G. Wiggins, George Tweedy, Alberton; John J. Arsenault, Joseph E. Richard, Tignish; Joseph Murphy, Lot 11; Alfred McWilliams, West Cape; Owen Hughes, County Line; Angus McKinnon, Coleman; John Anderson, Kensfugton; William Walsh, Ellerslie, Lot 12; James Gorman, Campbellton, Lot 4; Dougald J. McDougall, Lot 14; John Driscoll, Cape Traverse; Samuel E. Reid, Tryon; Albert Williams, Bideford, Lot 12; Angus J. Gaudet, Nail Pond; Peter McNutt, Malpeque; James Kilbride, Lot 11; Peter N. Pate, O'Leary, Lot 6; Wm. Hopgood, Port Hill; James H. Crossman, Freetown.

QUEEN'S COUNTY

John F. Whear, A. Ernest Ings, W. F. H. Carvell, Charlottetown; Donald McLeod, Orwell; J. McLeod, Strathalbyn; Duncan Crawford, Wood Islands; John C. Clark, Bayview, Lot 12; Donald Cameron, Springton Lot 67; Roderick McNeill, Stanley Bridge; Oliver B. Wadman, Crapaud; Albert Simpson, French River; James R. McEwen, Mount Stewart; M. Matheson, Bradalbane; Jas. A. Robertson, Bonshaw, Lot 30; James H. Bourke, Milview, Lot 49; John S. McQuarrie, Victoria, Lot 29; John McPherson, Murray Harbor Road; Joseph McCabe, Montague Cross; Wm. Mayne, Clinton, Lot 20; Geo. Forbes, Vernon River.

KING'S COUNTY

Alex. J. McDonald, Wm. S. Easton, Carl Owen, John A. Mathieson, Georgetown; Jas. R. McLean, Jas. McFarlane, Geo. B. McEachern, Michael McCormack, Geo. E. McFarlane, Arthur J. B. Mellish, Souris; James A. McInnis, Souris West; Daniel G. Cameron, Samuel Mutch, Geo. Wightman, Wm. Leith Poole, George S. Inman, Montague Bridge; Hilary McIsaac, John Webster, Head St. Peter's Bay; Lestock Anderson, St. Peter's Bay; Isaac A. Bears, Peters Road, Lot 63; James Clow, Murray Harbor North; Robert Whiteway, Murray River; Angus McDonald, Lot 42; Alex. McDonald, Lot 38; Robert N. Cox, Morell; Hugh Currie, Patrick Mooney, Peake's Station; John Nichols, Annandale; James F. Norton, Cardigan; John A. Gillis, Little Sands.

COMMISSIONERS FOR TAKING AFFIDAVITS, CHARLOTTETOWN

Charlottetown.—Albert Ernest Ings, James J. Johnston, John F. Whear, Aeneas A. McDonald, John T. Mellish, Eustace H. Haviland, James H. Reddin, Hector C. McDonald, Charles R. Smallwood, Hedley V. Palmer, Stanislaus Blanchard, John S. McDonald, Arthur Peters, A. Bannerman Warburton, Francis L. Haszard, Walter A. O. Morson, Angus A. McLean, William S. Stewart, Frederick Peters, H. James Palmer, Edward Bayfield, Malcolm McLeod, William A. Weeks, John A. Longworth, Duncan C. McLeod, John A. McDonald, William E. Bentley, W. F. Harrison Carvell, F. de St. C. Brecken, George A. Harvie, Richard Reddin, Harry R. McKenzie, F. W. L. Moore, Henry Smith, Donald A. MacKinnon

Queen's County.—Vernon River, Lemuel Cambridge Hayden, George Forbes; Kelley's Cross, Lot 29, James H. Monaghan; Caledonia, William McPherson; Bradalbane, John McLeod, Malcolm Mathieson; Cavendish, A. M. McNeill; Bay View, John C. Clark; Covehead, Cornelius Higgins; Crapaud, Donald W. Palmer, Oliver B. Wadman; DeSable, William Enman; Eldon, Donald R. McDonald, James St. C. Moore, Alex. McMillan; Emerald, Albert Craig; Township 57, Donald McLeod; Mount Stewart, James Ross; Stanley Bridge Roderick McNeill Strathalbyn, Donald Cameron, Donald Nicholson; Tracadie Cross, Anthony J. Duggan; Hunter River, Geo. H. McGuigan; Lot 67, Malcolm Mathieson; Hope River, Peter McGuigan.

Prince County.—Carleton, Lot 28, Donald Morrison; Cape Traverse, Ephraim A. Bell, Alex. Strang; Summerside, Geo. Godkin, Horace H. Beer, Neil McQuarrie, William T. Hunt, Henry E. Wright, Hugh J. Massey, James E. Wyatt, Neil McLeod, Richard E. Johnston, John H. Bell, Kenneth J. Martin; Alberton, Richard B. Reid, Charles A. Woodman, John P. Brennan; Bedeque, Augustus E. C. Holland; Bideford, Albert Williams; Centreville, Major Wright; Coleman, ———; Kensington, Donald Darrach, Township Seven, Peter Doyle, Alfred McWilliams; Township Eight, Duncan C. Ramsay; Township Fourteen, Donald J. McDougall; Township Twenty-five, William Taylor; Malpeque, Peter McNutt; Mimingash, Lawrence Doyle; Northam, Thomas Campbell; O'Leary, James Barclay, Peter N. Pate; Port Hill; John Yeo, Hugh R. Ramsay, William

PROVINCE OF P. E. I.—Law and Justice Department—(Continued)

Hopgood; Richmond, Stephen E. Gallant, Searletown, Dougald S. Wright; Tignish, Alexander J. McFayden; Tryon, Samuel E. Reid; Tyne Valley, John Forbes; Wright's Mills, David Rogers; St. Eleanor's, Alexander E. Holland; Kin-kora, Owen Hughes.

King's County.—Albion, Lot 59, Samuel Mutch; Montague, W. Leith Poole; Murray River, Robert Whiteway, sr.; Annadale, John Nichols; Souris, Michael M. McCormack, Arthur J. B. Mellish; Morell, Charles Vanderstine, Ewen Anderson, Robert N. Cox, Harvey D. McEwen; Cardigan, William P. Lewis, Dougald C. Morson, Geo. F. Owen; Dundas, Samuel McDonald; Township 42, Anthony McCormack; Little Sands, Duncan Munn; Montague Bridge, Allen McDougall; Lower Montague, Duncan Fraser; Murray Harbor, Samuel Prowse, Albert P. Prowse; Murray River, Robert Whiteway; North Lake, Dougald Campbell; Souris, Donald McDonald, Geo. B. McEachern, John McLean, John G. Sterns, James A. McInnis; St. Peter's Bay, Patrick McInnis; Montague, George Wightman, George S. Inman; Ruskin, Robert Mooney; Dundas, John R. Campbell; Georgetown, Angus D. McPhee, John A. Mathieson, Geo. A. Aitken.

F. L. Haszard, Charlottetown. Commissioner in P. E. I. for taking Affidavits in all the Courts in Ontario, also for taking Affidavits and Acknowledgments to Deeds for Newfoundland.

A. B. Warburton, Charlottetown, Commissioner in P. E. Island for taking Acknowledgments to Deeds, and for taking Affidavits in all the Courts of the State of Massachusetts, U. S.

Supreme and Exchequer Courts of Canada—John A. Longworth, Charlottetown, Commissioner for taking Affidavits.

COMMISSIONERS FOR TAKING ACKNOWLEDGMENTS TO DEEDS.

Queen's County—Bay View, John C. Clark; Bonshaw, James A. Robertson; Bradaibane, Mal. Matheson; Crapaud, O. B. Wadman; French River, Albert Simpson; Lot 48, (Southport), Henry Bourke; Montague Cross, Joseph McCabe; Mount Stewart, James R. McEwen; Murray Harbor Road, John McPherson; Orwell, Donald McLeod; Springton, Donald Cameron; Stanley Bridge, R. McNeill,

M. D.; Strathalbyn, John McLeod; Victoria, John S. McQuarrie; Wood Islands, Duncan Crawford; Charlottetown, John F. Whear, A. Ernest Ings, W. F. Harrison Carvell; Clinton, William Mayne.

King's County—Annadale, J. Nichols; Cardigan, Wm. P. Lewis; Fox River, Lot 42, Angus McDonald; Georgetown, William S. Easton, Alex. J. McDonald, Carl Owen, D. A. McKinnon, John A. Mathieson; Lot 38, Alex. McDonald; Lot 55, Samuel McDonald; Lot 63, Isaac A. Bears; Morell, Robert N. Cox; Murray Harbor South, James Clow; Peake's Station, Hugh Currie, Patrick Mooney; Souris, James R. McLean, George B. McEachern, Michael McCormack, Jas. A. McInnis, Geo. B. McFarlane, Arthur J. B. Mellish; St. Peter's Bay, Hilary McIsaac, Lestock Anderson; Priest Pond, James McFarlane; Montague Bridge, Geo. Wightman, William Leith Poole, Samuel Mutch; Commercial Cross, D. G. Cameron; Whim Road, Duncan Fraser; Peter's Road, Isaac A. Bears.

Prince County.—Alberton, Richard B. Reid, Charles A. Woodman, John P. Brennan, Jas. G. Wiggins, Geo. Tweedy; Bedeque, Murdoch Ross; Campbellton, Lot 4, James Gorman; Cape Traverse, Isaac Clark, John Driscoll; Centreville, Major Wright; Coleman, Angus McKinnon, ———; County Line, Owen Hughes; Egmont Bay, Sylvanus E. Gallant; Eilerslie, Jas. Barclay; Kensington, John Sharpe, John Anderson; Lot 11, Joseph Murphy; Lot 12, William Walsh; Lot 14, John O'Connor, Donald J. McDougall; Miscouche, H. V. DesRoches; Nail Pond, Lot 1, Agno J. Gaudet; O'Leary Station, D. C. Ramsay; Summerside, Wm. T. Hunt, H. E. Wright, John Clay, Hugh J. Massey, James E. Wyatt, John H. Bell, Neil McQuarrie, K. J. Martin, Leonard Morris; St. Eleanor's, Alexander E. Holland; Tignish, Joseph E. Richards, John J. Arsenaull; Tryon, Robert Leard, Samuel E. Reid; West Cape, Alfred McWilliams; Bideford, Albert Williams, Thomas H. Pope; Port Hill, Wm. Hopgood; Freetown, Lot 25, James H. Crossman; Malpeque, Peter McNutt; O'Leary Station, Peter N. Pate.

COMMISSIONERS FOR TAKING RECOGNIZANCE OF BAIL.

Crapaud, D. W. Palmer; Georgetown, G. A. Aitken; Lot 11, Joseph Murphy; Lot 55, Donald McKinnon; Montague, Allan McDougall; Souris, Ronald McDonald; Summerside, Willam T. Hunt.

Barristers, Solicitors, Attorneys and Notaries Public

NAME	RESIDENCE	ADMITTED
*Charles Palmer, Q. C.....	Charlottetown	May 10, 1845
*Frederick de St. C. Brecken, Q. C.....	do	June 1, 1852
*Benjamin DeBrisay.....	do	October 30, 1852
Malcolm McLeod, Q. C.....	do	July 16, 1861
Sir Louis H. Davies, K. C. M. G., Q. C.....	do	June 27, 1866
*William Douglas Haszard.....	do	February 28, 1871
Edward Bayfield, Q. C.....	do	November 3, 1871
Francis L. Haszard, Q. C.....	do	February 28, 1872
Henry E. Wright.....	Summerside	July 13, 1872
Eustace H. Haviland.....	Charlottetown	February 5, 1873
Herbert James Palmer, Q. C.....	do	May 8, 1876
Angus A. McLean, Q. C.....	do	November 13, 1876
Walter A. O. Morson, Q. C.....	do	February 28, 1877
Duncan C. McLeod.....	do	June 12, 1877
†John S. McDonald.....	do	June 28, 1878
Arthur Peters, Q. C.....	do	October 1, 1878
Stanislaus Blanchard.....	do	November 1, 1881
Hedley V. Palmer.....	do	January 10, 1882
William S. Stewart, Q. C.....	do	July 15, 1882
George Tweedy.....	Alberton	July 24, 1883
Neil McQuarrie.....	Summerside	October 4, 1883
James E. Wyatt.....	do	November 2, 1883
John H. Bell.....	do	October 7, 1884
Charles R. Smallwood.....	Charlottetown	October 7, 1884
James H. Reddin.....	do	July 3, 1885
William Arthur Weeks.....	do	July 18, 1885
John A. Longworth.....	do	January 11, 1887
Oliver Rattenbury.....	do	May 3, 1887
D. A. McKinnon.....	do	November 14, 1887
F. W. L. Moore.....	do	May 1, 1888
John T. Mellish.....	do	May 5, 1888
Eneas A. McDonald.....	do	July 17, 1889
†Kenneth J. Martin.....	Summerside	July 17, 1889
John F. Whear.....	Charlottetown	January 14, 1890
†James Joseph Johnston.....	do	November 1, 1892
Albert Ernest Ings.....	do	February 27, 1894
John A. Mathieson.....	Georgetown	May 1, 1894
Arthur James Benjamin Mellish.....	Souris	January 14, 1896
Richard Edward Johnston.....	Summerside	November 3, 1896
John A. McDonald.....	Charlottetown	July 30, 1897
George S. Inman.....	Montague	October 5, 1897
William E. Bentley.....	Charlottetown	November 3, 1897
W. F. Harrison Carvell.....	do	June 14, 1898
Harry R. McKenzie.....	do	October 4, 1898
Aubin E. Arsenaault.....	do	November 1, 1898
Neil McLeod.....	Summerside	June 27, 1899
Albert C. Saunders.....	do	October 3, 1899

*Not now practicing.

Those marked † are not Notaries Public

ADDITIONAL NOTARIES PUBLIC—Jams R. McLean, Souris; Benjamin Rogers, Alberton; Frederick Morrow, Souris.

PROVINCE OF P. E. I.—Law and Justice Department—(Continued)

COUNTY COURTS

QUEEN'S COUNTY

Judge—Hector C. McDonald

QUEEN'S COUNTY COURT SITTINGS

1st Circuit, Eldon—On the first Tuesday in March, August, October and December. Clerk: James St. C. Moore.

Bailiffs—John Murphy, Newton Cross; Roderick McNeill, Vernon River.

2nd Circuit, Bonshaw—On the Friday next following the first Tuesday in March, August, October and December. Clerk: Robert Ince, Hampton.

Bailiff—William Hughes, Victoria.

3rd Circuit, Dunstaffnage—On the second Tuesday in March, August, October and December. Clerk: Walter Scott, Dunstaffnage.

Bailiffs—Thomas A. Dougan, Tracadie; Archibald Murray, Marshfield.

4th Circuit, New Glasgow—On the Friday next following the second Tuesday in March, August, October and December. Clerk: A. B. Dickieson, New Glasgow.

Bailiff—John D. McLeod, Hunter River.

5th Circuit, Clifton—On the third Tuesday in March, August, October and December. Clerk: H. E. McKay, Clifton.

Bailiff—John Gunn, Clifton.

6th Circuit, Charlottetown—On the fourth Tuesday in March, August, October and December. Clerk: Henry Smith.

Bailiff—Daniel Reardon.

COMMISSIONERS FOR TAKING AFFIDAVITS IN THE COUNTY COURT OF QUEEN'S COUNTY

Charlottetown—Frederick W. Hughes, G. A. Harvie, Angus A. McLean, Donald McNeill, Henry Smith; Clifton, New London, Hugh B. McKay; Dunstaffnage, Eldon, James St. C. Moore; Hampton, Lot 29, Robert Ince; Monaghan, James Wisner; Mount Stewart, James Ross; New Glasgow, John Binns; Rustico (South), Robert A. Crasswell; Valleyfield, Alex. Martin; Victoria, Solomon J. B. Laird.

KING'S COUNTY

Judge—A. Bannerman Warburton.

KING'S COUNTY COURT SITTINGS

1st Circuit, Head of Murray River—On the first Tuesday in March, August, October and December. Clerk: Robert Whiteway.

Bailiffs—John B. Horton, Thomas McCarron.

2nd Circuit, Souris East—On the second Tuesday in March, August, October and December. Clerk: Michael McCormack.

Bailiff—Joseph Mead.

3rd Circuit, Head St. Peter's Bay—On Friday following the second Tuesday in March, August, October and December. Clerk: Andrew Lewis.

Bailiffs—Patrick Devan, Thos. Trainor.

4th Circuit, Dundas—On Monday following the second Tuesday in March, August, October and December. Clerk: John R. Campbell, Dundas.

Bailiffs—John R. Campbell, Archibald Currie.

5th Circuit, Georgetown—On the third Tuesday in March, August, October and December. Clerk: Geo. A. Aitken.

Bailiffs—William W. Lavers, Daniel A. Martin, Scoby Johnson.

COMMISSIONERS FOR TAKING AFFIDAVITS IN THE COUNTY COURT OF KING'S COUNTY

Georgetown—G. A. Aitken; Montague Bridge, George Whitman; Murray River, Robert Whiteway; Cardigan, George F. Owen; Little River, Lot 56, John C. Underhay; Springfield, Clement McDonald; Inlet, Lot 56, Stephen Campbell; East Point, Alexander R. Beaton; Souris, James Moynagh, jr.; St. Peter's Bay, Andrew Lewis; Souris West, James A. McInnis.

PROVINCE OF P. E. I.—County Courts—(Continued)

PRINCE COUNTY

Judge—Neil McLeod

PRINCE COUNTY COURT SITTINGS.

1st Circuit, Alberton—On the first Tuesday in March, August and December and on the third Tuesday in October. Clerk: Charles A. Woodman.

Bailiffs—William D. White, ——— Forsyth.

2nd Circuit, Port Hill—On the second Tuesday in March, August and December and on the Thursday following the third Tuesday in October. Clerk: William Hopgood.

Bailiff ———

3rd Circuit, Abram's Village, Lot 15—On the Friday following the second Tuesday in March, August and December and the Friday following the third Tuesday in October. Clerk: Sylvanus E. Gallant.

Bailiff ———

4th Circuit, Centreville—On the third Tuesday in March, August and December and on the fourth Tuesday in October. Clerk: Alfred Schurman.

Bailiff—Jeremiah Murphy.

5th Circuit, Summerside—On the Friday following the third Tuesday in March, August and December and on the Wednesday following the fourth Tuesday in October. Clerk: William T. Hunt.

Bailiff—Allen Waugh.

COMMISSIONERS FOR TAKING AFFIDAVITS
IN THE COUNTY COURTS OF PRINCE
COUNTY

Summerside—William T. Hunt, H. J. Massey; Centreville, Alfred Schurman; Egmont Bay, Sylvanus E. Gallant; Alberton, Charles A. Woodman; Lot 26 Peter Duffy; Port Hill, Wm. Hopgood, D. C. Ramsay; Tignish, Jos. E. Richard, John McLellan.

EDUCATIONAL

Chief Superintendent of Education—D J. McLeod

Clerk to " " —E. S. MacPhail

BOARD OF EDUCATION

The Executive Council, the Principal of the Prince of Wales College, the Chief Superintendent of Education.

SCHOOL INSPECTORS

King's County—G. J. McCormack, St. George's.

Queen's County—Alexander Campbell, Victoria.

Prince County—W. D. McIntyre, St. Eleanors.

Inspector of Acadian Schools—Joseph Octave Arseneault, Charlottetown.

PRINCE OF WALES COLLEGE AND
NORMAL SCHOOL

Principal—Alex. Anderson, L. L. D.; First Professor—John Caven; Second Professor—Herbert A. Shaw, B. A.; Third Professor—Edward E. Jordan, B. A.; Fourth Professor—Samuel W. Robertson, B. A.

MODEL SCHOOL

Principal—Joseph Octave Arseneault; Assistant—Miss Alexandra Scott.

BOARD OF SCHOOL TRUSTEES FOR
CHARLOTTETOWN

Stanislaus Blanchard, Chairman;

Francis P. Taylor, M. D.; Duncan C. McLeod; Thomas Handrahan; W. S. Stewart; S. R. Jenkins, M. D.; John D. Reid.

Supervisor and Grading Officer of the City Schools and Secretary of School Board—Ewen Stewart.

CHARLOTTETOWN BUSINESS COLLEGE

L. B. Miller, Principal

P. E. I. COMMERCIAL COLLEGE

Isaac Oxenham, Principal.

FIRST-CLASS SCHOOLS

KING'S COUNTY

Georgetown—Principal. Parmenas McLeod.

Cardigan—Principal, Wallace Coffin.

Souris—Principal, Howard Leslie.

Murray Harbor South—Principal, Catherine Shaw.

Montague—Principal, J. E. Joy.

QUEEN'S COUNTY

Charlottetown, Prince Street School—Principal, J. D. Seaman.

PROVINCE OF P. E. I.—Educational—(Continued)

Charlottetown, Queen Square School—
Principal, James Landrigan.

Charlottetown, West Kent Street School
—Principal, Lemuel Miller.

Victoria—Principal, A. P. Trowsdale.

Uigg—Principal, William Music.

Stanley—Principal, W. A. W. McCoubrey.

New Glasgow—Principal, Fenton T. Aitken.

Little York—Principal, V. Crockett.

Eldon—Principal, A. J. W. Myers.

Kelly's Cross—Principal, Mathias Smith.

PRINCE COUNTY

Summerside—Principal, R. H. Campbell.

Alberton—Principal, Charles Kiely.

Fanning—Principal, David Shaw.

Kensington—Principal, N. E. Carruthers.

St. Eleanor's—Principal, W. D. Tanton.

Tignish—Principal, Joseph S. Gallant.

ST. DUNSTAN'S COLLEGE

Rev. A. P. McLellan, Rector; Revs. Thos. Curran, D. D., Terrence Campbell, Dr. Monaghan, P. C. Gauthier; George Cahill, John D. McIntyre, Jas. Donahoe, William E. Cameron, K. McPherson, J. A. McLellan, Professors.

ST. PETER'S SCHOOL

Head Master—Rev. T. H. Hunt, B. A.

Assistant—W. Cox.

Mistress—Miss DesBrisay.

EDUCATIONAL GROWTH

YEAR	NO. SCHOOLS	NO. PUPILS
1833	74	2,176
1837	51	1,649
1841	121	4,356
1847	125	5,000
1851	135	5,366
1856	268	11,000
1861	302	
1870	372	15,000
1874	403	18,233
1878	465	19,240
1881	486	21,601
1887	437	22,460
1897	467	21,844
1898	468	21,852

HISTORICAL EVENTS

- 1821—National School opened
 1830—First Board of Education appointed
 1836—Central Academy opened
 1837—First Official Inspector of Schools appointed
 1838—First Teachers' Association formed
 1852—Free Education Act passed
 1856—Provincial Normal School opened
 1855—St. Dunstan's College opened
 1860—Prince of Wales College established
 1877—Public Schools' Act passed
 1879—Prince of Wales College and Provincial Normal School amalgamated
 1887—Provincial Teachers' Association found
 1885—Labor Day established for the Schools.
 1896—Provincial Teachers' Association Incorporated

WM. C. WHITLOCK

Dealer in PICTURES & PHOTOGRAPHIC GOODS

Architectural Wood Carver and Novelty Wood Worker

PICTURE FRAMING done at short notice. Our Mouldings includes all the new and Artistic Styles in Gilt, Oak, Chestnut, Oxidized, Silver, Steel, Enamels, Mouldings and Mat Cutting, etc.

Orders promptly attended to

Satisfaction Guaranteed

UMBRELLAS REPAIRED

240 Queen Street, Charlottetown, P. E. Island

PROVINCE OF PRINCE EDWARD ISLAND—(Continued.)

Coroners

QUEEN'S COUNTY

Charlottetown, Drs. J. T. Jenkins, Jas. McLeod, Peter Conroy, F. P. Taylor; *Clyde River*, Alex. Murchison, M. D.; *Crapaud*, J. F. Covey, M. D.; *Eldon*, James St. C. Moore; *French River*, Chas. A. Crosby; *Grand View*, Martin Martin, M. D.; *New Glasgow*, Harrington Bradshaw, M. D.; *Hunter River*, William Honeywell, M. D., Albert E. Douglas, M. D.; *Vernon River Bridge*, Alex. Ross, M. D.; *Rustico*, Isidore Gallant, M. D.; *Stanley Bridge*, Roderick McNeill, M. D.; *Wood Island West*, James A. McMillan; *Mount Stewart*, John G. Toombs, M. D., also for King's County.

KING'S COUNTY.

Annandale, William Norton; *Brudenell*,

Peter McLaren, M. D.; (New Perth, P. O.) *Cardigan Bridge*, Archd. Allan, M. D.; *Murray River*, C. L. Barnes, M. D., Geo. A. C. McIntosh, M. D.; *Montague Bridge*, J. M. Martin, M. D., James E. Robertson, M. D.; *Red Point, Lot 46*, John McInnis; *Souris*, Drs. Peter McIntyre, Ephraim B. Muttart, Angus McLean; *Head St. Peter's Bay*, Robt. D. McLaughlin, M. D.

PRINCE COUNTY.

Cape Traverse, W. H. Dougherty, M. D.; *Coleman*, A. J. McDougall, M. D.; *Kensington*, Donald Darrach, M. D.; *Malpeque*, William Kier, M. D., Peter McNutt; *O'Leary*, James Barclay; *Summerside*, Drs. Jas. E. Price, Robt. Shays Bowness, Colin McPhall; *Tyne Valley*, A. E. Long, M. D.

Boards of Health throughout the Island

PRINCE COUNTY

TIGNISH, LOT 1

John J. McLellan, Joseph E. Richard, Alex. F. Larkin, Tignish; Charles Daiton, Norway; William Platts, Little Tignish; J. C. McCarthy, Sea Cow Pond.

Health Officer and Superintendent of Vaccination, J. H. McLellan, Tignish.

ALBERTON

Joseph L. Darrach, Chairman, John P. Fielding, R. A. Clark, James F. Wood, John Wilkinson, Fred. L. Rogers, William Champion, James S. Gordon.

Health Officer and Superintendent of Vaccination, Alex. Ross, M. D.

LOTS 5, 6 AND 9, O'LEARY, DISTRICT

Donald McLaughlin, M. D., Chairman; James Barclay, Robert Ellis, sr., O'Leary Station; J. A. Webb, Carleton; Meddie Gallant, Bloomfield; C. H. Carruthers, Mill River, Lot 6; H. McPhee, Brae, Lot 9.

Health Officer for Lots 5 and 6, J. J. McLean, M. D., Alberton.

LOTS 10 AND 11

David Smith, Chairman, Freeland; James Kilbride, James Bolger, Arthur Bryan, Lot 11; Wm. Palmer, sr., Freeland, Lot 11; William Nichols, James Gregg, West Devon; Hugh Goff, Daniel McDonald, Joseph Moreshead, John McArthur, Ritchie's P. O. Lot 10.

Health Officer and Superintendent of Vaccination, A. E. Long, M. D. Tyne Valley.

LOTS 12, 13 AND 14

Thomas H. Pope, Northam; Thomas Murphy, Port Hill; William McIntosh, Mount Pleasant, Lot 13; Albert Williams, Bideford, Lot 12; Stephen McKinnon, Grand River; Stephen Gallant, Richmond; James McDougall, jr., Lot 14.

Health Officer, Alfred Long, M. D., Tyne Valley.

LOT 15 AND PART OF 17

H. V. DesRoche, Chairman, John S. Gaudet,

Daniel Malone, Archie F. Gillis, John Squarebridge, Gilbert DesRoche, sr., Jerome J. DesRoche, Miscouche; C. R. Bickey, Muddy Creek, Lot 17; Alex. McNeill, Donald McKinnon, Southwest, Lot 16; Jacob L. Goodwin, Fidele T. Arsenaud, Wellington.

BEDEQUE, LOT 25 AND 26

Major Wright, Chairman, John Sutherland, M. D., A. M. Wright, John A. Howatt, Daniel H. McDonald, Bedeque.

QUEEN'S COUNTY

NEW LONDON

George B. McKay, William McKay, Clifton; Thomas Reid, Daniel Ross, Stanley Bridge; William Hogan, Hope River; John Forristal, Burlington; Donald Cameron, Long River; William Ramsay, Park Corner; Charles A. Crosby, George Anderson, French River, Lot 20.

CRAPAUD, LOT 29

Matthew Smith, Chairman, Neil Shaw, W. H. Inman, DesSable; Neil McDonald, Hampton; John S. McQuarrie, Victoria; B. D. Howatt, John Moore, J. B. Trowsdale, George Lowther, J. J. McLeod, Ewen McKinnon, Artemas Beer, John McKinnon, Crapaud.

Health Officer and Superintendent of Vaccination, W. H. Robertson, M. D.

LOTS 30 AND 65

Cyrus Crosby, Chairman, James Robertson; Bonshaw; John McNevin, Black Point, Lot 29; James Gordon, Appin Road; Peter McKinnon; Line Road, Lot 30; T. A. Stewart, West River; James McLean, Long Creek; Thomas Murphy; South Shore; J. H. Morrow, St. Catherine's; Donald McKinnon, Canoe Cove; Wm. Stretch, Long Creek; Douglad McEachern, Rice Point; Thomas Woods, sr., Brookvale, Lot 65.

Health Officer and Superintendent of Vaccination, Alexander Murchison, M. D., Clyde River.

PROVINCE OF P. E. I.—BOARD OF HEALTH—(Continued)

LOTS 33, 34 AND PART 35

Abraham Gill, Chairman, Little York; James McGrath, Covehead Road; Harry C. Lawson, Stanhope, Lot 34; Alexander Scott, Brackley Point Road; George Smith, Winsloe Road; Jonathan McWilliams, Lot 33; Patrick Morris, Millocke; Peter Campbell, Grand Tracadie, Lot 35.

LOTS 36, 37, 38 AND PART 35

Montague Pigott, John McKenzie, Mount Stewart; John McDonald, Mt. Ryan; Robert Farquharson, Mt. Herbert; John A. McDonald, Pisquid; Lucius O. Kelly, James H. Cummiskey, Fort Augustus; Neil McAskill, Sandhills, Tracadie; Patrick McManus, Dromore, P. O.; Patrick J. Trainor, Webster's Corner, P. O.; Patrick Loughran, Kelly's P. O.; Fort Augustus; William Holland, Webster's Corner; Robert Haggerty, Kelly's P. O., Ft. Augustus.
Health Officer, James Walsh, M. D., Mount Stewart.

LOT 48 AND PART 35.

John W. Stewart, Southport; Patrick Duffy, Robert Stewart, Lot 48; James W. Kennedy, Southport; James J. Wisner, Monaghan; Edward Ryan, James A. McDonald, Johnstone's River.

Health Officer, Alfred H. Beers, M.D., Cherry Valley.

LOTS 49 AND 50

Georgé Forbes, Chairman, David P. Irving, Vernon River Bridge; Edward Grant, Millview, Lot 50; Albert Boswell, Richard Carver, Pownal; Hayden Vanlderstine, Vernon River.
Health Officer, Alfred H. Beers, M. D. Cherry Valley.

RUSTICO

David Mutch, Leon Gailant, Oyster Bed Bridge; Thomas Doyle, North Rustico; John Binns, New Glasgow; Angus McKenzie, Cavendish; Joseph Gallant, South Rustico; Isadore Gallant, M. D., Rustico; Peter McGrath, Hunter River.

Health Officer, Isadore Gallant, M.D. Rustico.

LOTS 57 AND 58

James St. C. Moore, Chairman, Eldon, Belfast; Wellington Mutch, Eldon; John Campbell, Point Prim; William Welsh, Montague Cross; John Power, Newton, Belfast; Daniel Morrissey, Orwell Cove; Norman McLeod, Fortage, Belfast.

Health Officer and Superintendent of Vaccination, Martin Martin, M. D., Murray Harbor Road.

LOTS 60 AND 62

Duncan Crawford, Chairman, Duncan Taylor, Wood Islands; Daniel McLaren, Roderick McKenzie, Flat River; Joseph Saunders, Belle River, Lot 62; John McDonald, Caledonia, Lot 60.

Health Officer for Lot 62, C. S. Barnes, M. D., Murray River.

Health Officer for Lot 60, G. A. C. McIntosh, M. D., Murray River.

LOT 67

Samuel Kennedy, Chairman, Thomas Bigger, Malcolm Matheson, Wm. Doyle, Bradaibane; James McDonald, County Line; Robert Haslam, Springfield; Donald Cameron, Springton.

Health Officer—

KING'S COUNTY

LOTS 39 AND 40

Robert N. Cox, Chairman; Edward Jardine, Morel; William Hooper, Marie; Edward Mullins, Milltown, Lot 40; John Sinnott, St. Peter's Harbor; Henry McEwen, St. Peter's Mills; Charles McAdam, West St. Peter's; Lawrence Byrne, Byrne's Road, Lot 39.

SOURIS

Roderick F. McDonald, Chairman, James J. Hughes, Alfred W. Carter, James McEachern, Archibald Currie, Michael James Paquet, Jas. McCormack, S. P. Campbell, A. R. McDonald, (Blacksmith) Souris.

Health Officer and Superintendent of Vaccination, P. G. McIntyre, M. D.

RED POINT, LITTLE HARBOR AND KINGSBORO

William W. Coffin, Kingsboro; Andrew Mooney, Little Harbor; Donald M. Campbell, Theodore S. Robertson, Red Point, Lot 46.

MONTAGUE BRIDGE

William Compton, Sturgeon Road, Lot 61; Angus McDonald, Sturgeon Road; Daniel G. Cameron, Commercial Cross; Angus McLeod, Donald Campbell (Malcolm's son), Brown's Creek, Lot 59.

Health Officer, James E. Robertson, M. D., Montague Bridge.

LOWER MONTAGUE

George B. Aitken, Lower Montague; Duncan Fraser, Whim Road, Lot 59; Wm. Thompson, Sturgeon Mills.

GEORGETOWN

Hon. Daniel Gordon, Archd. J. MacDonald, Malcolm McDonald, George B. Aitken, Alex. J. McDonald, Wallace W. Jenkins, Jas. Burke, Georgetown.

CARDIGAN

James E. McDonald, Chairman; William P. Lewis, George F. Owen, Donald Stewart, Dougald C. Morson, J. G. Scrimgeour, John J. Campbell, Duncan McLaren, Donald Sigsworth, Cardigan, Lot 53.

LOT 56

John C. Underhay, Joseph Dingwell, Bay Fortune; John Nichol, Grand River, King's Co.; Charles McDonald, Little Pond; William Norton, Jas. Taylor, John Howlett, Annandale; Allan McDonald, Little Pond; Patrick Cahill, Groshaut; James Larkin, Farmington; Francis Mills, Little River; Ronald S. McDonald, Lot 56.

LOTS 63 AND 64

C. L. Barnes, M.D., Chairman, Murray River, James Bell, William Machon, White Sands; Hector Gillis, High Bank; Daniel Machon; Guernsey Cove; Albert Horton, Wilmot; Vere Penny, Angus McPhee, Murray Harbor South; Lot 64; Alexander McLeod, Glenwilliam; Wm. McLure, Murray Harbor North; Robt. White-way, jr., Dover; Charles S. McDonald, Peter's Road East, Lot 63.

LOTS 51 AND 66

Cyrus Shaw, Chairman, New Perth; J. A. Moar, Baldwin's Road; Robert Dewar, New Perth; Peter E. Campbell, Victoria Cross, Alex. Smith, New Perth Lot 51; P. J. D. Edmonds, Summerville; John McLean, John Kenny, Baldwin's Road; Patrick Koughan, Brother's Road; John McLean, Head of Montague, Lot 66.

LOT 55

William McLeod, George McKenzie, George Miller, Hugh McLellan, Dundas; Ronald McCormack, Narrow's Creek.

PROVINCE OF PRINCE EDWARD ISLAND—(Continued)

SUPERVISORS

QUEEN'S COUNTY

- No. 1—Robert M. Lamont, Clifton, Lots 20, 21.
 " 2—John McGuigan, Hope River, Lots 22, 27.
 " 3—Louis Pineo, New Glasgow, Lots 23, 24.
 " 4—Isaac Essory, Little York, Lots 33, 33.
 " 5—John McKinnon, Hampton, Lots 29, 30.
 " 6—John J. Carson, Brookfield, Lots 31, 32, and part of 65.
 " 7—John S. McDonald, Tracadie Cross, those portions of Lots 35, 36 and 37, north of the Hillsborough.
 " 8—Wm. Smallwood, Mt. Herbert, Lots 48, 35, 36 and 37, south side of the Hillsborough.
 " 9—James Judson, Alexandria, Lots 49, 50.
 " 10—Malcolm Martin, Grand View, Lots 57, 58.
 " 11—Alex. Beaton, Flat River, Lots 60, 62.
 " 12—Donald McMillan, Charlottetown Royalty and Lot 32.
 " 13—Andrew Dickieson, Long Creek, Lot 65.

PRINCE COUNTY

District.

- No. 1—John Christopher, Tignish, Lots 1, 2 and 3.
 " 2—Wm. O'Meara, Campbellton, Lots 4, 5 and 6.
 " 3—John M. Stewart, Lot 8, for Lots 7, 8, and 9.
 " 4—William J. Palmer, Freeland, for Lots 10, 11 and 12.
 " 5—Mark F. Arsenault, Egmont Bay, Lots 15, 16.
 " 6—Thomas Townsend, Travellers Rest, for Lots 16, 17, and the Line Road between Lots 19 and 25.

- No. 7—Robert Crosier, Hamilton, Lot 18, Princetown Royalty.
 " 8—Fredk. Picketts, Lot 25, for Lots 25, 26.
 " 9—Neil McFayden, Augustine Cove, Lots 27, 28.
 " 10—John McKinnon, Lot 14, for Lots 13 and 14.
 " 11—J. G. H. Squairbriggs, Lot 17.

KING'S COUNTY

District.

- No. 1—Patrick Bambrick, St. Andrew's, Lots 38, 39, 40, west of Morell River.
 " 2—James D. McInnis, St. Peter's Bay, Lots 40, 41, 39, east of Morell River, St. Peter's Harbor Mouth, and Morell River Bridge.
 " 3—Alex. Campbell, Hollo Bay, Lots 42, 43, including division Roads between Lots 43 and 44.
 " 4—Louis McEachern, Clearspr'ngs, for Lots 44 and 46.
 " 5—Michael Mooney, Greenvale, South Lake, Lots 46, 47.
 " 6—James Larkins, Farmington, Lots 55, 56, north of Grand River and Grand River Bridge.
 " 7—Martin Martin, Narrows Creek, Lot 55, south of Grand River, Lot 53, north of Cardigan River and Lot 54.
 " 8—Abner Dewar, Montague, Lots 51, 52, 53.
 " 9—Allan McDonald, Valleyfield, Lots 59, 61, 65, and Montague Bridge.
 " 10—Daniel McNeill, Sturgeon, Lots 63 and 64.
 " 11—George A. Parker, Georgetown, that part of Lot 53 being south of Cardigan and north of Brudenell Rivers, including Georgetown Royalty and Common and Reserved Lands adjoining Royalty.

Hospital for Insane

Hon. D. Farquharson, President; Hon. James R. McLean, Hon. Benjamin Rogers; S. Blanchard, Ewen McDougall.

Stock Farm

Hon. Peter McNutt, Chairman; Hon. Peter Sinclair, Hon. Anthony McLaughlin; William Miller, Frederick Boyer.

Government Poor House

Commissioners.—Hon. D. Farquharson, Chairman; Hon. Benjamin Rogers; Thomas Riley.

Land Surveyors

Provincial Board of Examiners—Prof. D. J. McLeod, Chairman; H. J. Cundall.

Qualified under the new Provincial Law—Prof. H. Shaw, P. W. C.; John P. Nicholson, Charlottetown; Lemuel McDonald, Charlottetown.

Dominion and Provincial Land Surveyors

—H. J. Cundall, Charlottetown; V. S. Gillis, Indian River.

Land Surveyors—Thos. W. May, Charlottetown; John Clay, Summerside; J. C. Underhay, Bay Fortune.

Inspector of Surveyors' Instruments and Measures—Thomas W. May.



JAMES WARBURTON, M. D., MAYOR OF THE CITY OF CHARLOTTETOWN

Corporation of Charlottetown

CITY COUNCIL

Mayor—James Warburton, M. D.

Ward 1—Charles Lyons.

Ward 2—F. P. McCarron.

Ward 3—Thos. Z. Taylor.

Ward 4—Donald Nicholson, Simon W. Crabbe.

Ward 5—Alex. Horne, D. L. Hooper, Geo. Wheatley.

Regular Council Meetings are held on the second Monday in every month, at 7.30 o'clock, p. m.

OFFICERS OF THE CITY

Recorder—F. L. Haszard, Q. C.; *City Clerk*—H. M. Davison; *City Surveyor*—Charles Dalziel; *City Collector*—Robert VanInderstine.

COMMISSIONERS OF SEWERS AND WATER SUPPLY

Henry Smith, *Chairman*; Peter Halloran and Chas. McGregor; *Superintendent of Works*—Charles Dalziel; *Accountant* Duncan McLean.

POLICE DEPARTMENT

Stipendiary Magistrate and Judge of the City Court—Francis L. Haszard, Q. C.; *Clerk*—H. V. Palmer; *City Marshal*—Charles Cameron; *Sergeants*—P. Bradley, Dennis Doyle; *Policemen*—Thos. Taylor, Joseph Carter, Henry Hooper, Harry Matheson.

CITY MEMBERS OF SCHOOL BOARD

Joseph B. McDonald, W. S. Stewart, Thomas Handrahan.

AUDITORS

Robert Galbraith and L. B. Miller.

BOARD OF HEALTH

Chairman—James Warburton, M. D., *Mayor*; *Health Officer*—Richard Johnson, M. D.; *Quarantine Officer*—Peter Conroy, M. D.; Simon W. Crabbe, Chas. Lyons, Donald Nicholson, Thos. Z. Taylor, Alex. Horne, D. L. Hooper, Geo. Wheatley, Francis McCarron, Henry Smith, Charles McGregor, Peter Halloran; *Secretary*—H. M. Davison; *Sanitary Officer*—J. Taylor.

CITY COURT

Judge—F. L. Haszard; *Clerk*—Hedley V. Palmer.

This Court has the same Jurisdiction and procedure as the County Courts, as regards persons, both as debtors and creditors, residing within the city; provided the amount claimed does not exceed \$80.00. This Court holds its Sittings on the first Wednesday in every month, in the City Court Room. Summonses must be issued eight days before each session.

COURT OF APPEAL FROM CIVIC ASSESSMENT

Judge—F. L. Haszard; *Clerk*—Hedley V. Palmer.

This Court is held once a year to hear appeals from the valuation of City Assessors. It was constituted by Statute 39

CITY OF CHARLOTTETOWN—(Continued)

Vic., Cap. 20. The Appellate Jurisdiction was formerly held by the City Council, but by this Statute is transferred to the Stipendiary Magistrate.

FIRE DEPARTMENT

FIRE BOARD

A. N. Large, Chief Engineer; S. W. Crabbe, 1st Assistant Chief; Charles Hermans, 2nd Assistant Chief.

FIRE DEPARTMENT

Rollo Hose Reel Company—Thomas

Pickard, Captain; Arthur Vatcher, Lieut.

Hillsborough Hose Reel Company—Thomas Ranahan, Captain; Daniel McDonald, Lieut.

Sir John A. Hook and Ladder Company—Kenneth Finlayson, Captain; Cephas B. Murley, Lieutenant; J. Harvie Morris, Secretary.

Royal Salvage Corps—H. R. Large, Captain; J. W. S. McLeod, Lieutenant; Wall. Stewart, Secretary.

Corporation of Summerside

MAYOR

Ronald Campbell.

COUNCILLORS

Robert Sobey, Harry D. Woods, George Muttart, Alex. H. Allen, Samuel H.

Clark, John Dickieson.

TOWN CLERK

Hugh J. Massey

POLICE OFFICERS

F. W. Peters, John A. McDonald.

Consuls

United States Consul—D. J. Vail, Charlottetown.

United States Vice Consul—John T. Crockett, Charlottetown.

United States Consular Agents—Albert Glidden, Tignish; A. J. McDonald, Georgetown; Richard Hunt, Summerside;

C. C. Carleton, Souris.

Vice Consul for Spain—W. H. Aitken, Charlottetown.

Vice Consul for France—William C. Hobkirk.

Vice Consul for Sweden and Norway—C. Lyons.

SCHEDULE OF TELEGRAPH TOLLS

(ANGLO-AMERICAN TELEGRAPH CO. PRINCE EDWARD ISLAND DIVISION)

Superintendent—T. C. JAMES

Rates to all offices on the Island and Cape Tormentine, N. B., Port Elgin, N. B., Bay Vert, N. B., and Sackville, N. B.—25 cents for 10 words, and 2 cents for each additional word.

Cable Rates to Great Britain, France and Germany—25 cents per word.

Rates to Ontario, Quebec, New Brunswick, Nova Scotia and Cape Breton—50 cents for 10 words and 3 cents for each addition.

The rates to the following States are \$1.00 for 10 words and 6 cents for each additional—Connecticut, Delaware, District of Columbia, Maryland, Massachusetts, New Hampshire, New Jersey, New York, Pennsylvania, Rhode Island, Vermont.

State rates that are \$1.10 for 10 words and 7 cents for each additional—Illinois, Chicago, only; Indiana, Kentucky, Michigan, North Carolina, Ohio, South Carolina, Virginia, West Virginia.

State rates that are \$1.25 for 10 words and 8 cents for each additional word—Alabama, Arkansas, Colorado, Florida, Georgia, Illinois, Indian Territory, Iowa, Kansas, Louisiana, Manitoba, Minnesota, Mississippi, Missouri, Montana, Nebraska, New Mexico, North Dakota, Oklahoma, South Dakota, Tennessee, Texas, Wisconsin, Wyoming.

State rates that are \$1.50 for 10 words and 10 cents for each additional word—Arizona, California, Idaho, Nevada, Oregon, Utah, Washington.

PROVINCE OF P. E. I.—Telegraph Schedules—(Continued)

Rates to Maine—90 cents for 10 words and 6 cents each additional.

Newfoundland.....\$1.25 for 10 words and 11 cents each additional.

Newfoundland (Government Offices) \$1.50 per 10 words and 13 cents each additional.

Bermuda.....81 cents per word.

There are a few small places with additional rates for other lines and Telephones in almost every State and Province.

SCHEDULES OF TELEPHONE CHARGES

TELEPHONE COMPANY OF P. E. I. J. D. Reid, Manager

VERBAL MESSAGES

From Station to Station, when the distance does not exceed 5 miles, for five minutes conversation—10 cents; 5 to 10 miles—20 cents; over 10 miles—25 cents.

Half rates charged for each additional five minutes or fraction thereof.

A discount of 20 per cent. on the above rates (except on 10 cent Tolls) will be made to lessees of Telephones, also to clergymen.

WRITTEN MESSAGES

Written messages, subject to Company's printed conditions, containing 20 words and under, will be transmitted at same rates as above. For each additional word—1 cent extra, they will also be delivered free at the residence of the person addressed up to a $\frac{1}{4}$ of a mile from the office of destination.

Special rates will be made for delivering messages at greater distances.

Ecclesiastical and Religious Department

CLERGY OF THE CHURCH OF ENGLAND

Bishop of Nova Scotia exercising Episcopal jurisdiction over this Island—The Right Rev. Frederick Courtney, S. T. D.
Archdeacon of P. E. Island—Rev. T. B. Reagh, Milton, P. E. I.

Charlottetown—Rev. Leo Williams, Rector St. Paul's; Rev. James Simpson, M. A., Priest Incumbent of St. Peter's; Assistant Priests, Rev. T. H. Hunt, B. A., Rev. W. J. Cox, B. A.

Alberton and Kildare—
Crapaud and Springfield—Rev. J. M. Forbes.

Georgetown and Cherry Valley—Rev. John Godfrey

Milton and Rustico—Rev. Thomas B. Reagh.

New London, Burlington and Kensington—Rev. H. C. Aylwin.

Port Hill, Bideford and Lot 11—Rev. H. Harper.

Summerside and St. Eleanor's—Rev. J. M. Withycombe, B. A.

CLERGY OF THE ROMAN CATHOLIC CHURCH

The Right Rev. J. Charles McDonald, Bishop of Charlottetown.

Charlottetown Cathedral—Revs. James Morrison, D. D.; John F. Johnson and Felix Connolly.

Alberton—Rev. A. E. Burke.

Bloomfield—Rev. F. X. Gallant.
Brae—Rev. A. J. McDougall.
Cardigan—Rev. J. C. McMillan, D. D.
St. Teresa—Ignatius R. A. McDonald.
DeSable—Rev. D. B. Reid.

East Point—Rev. A. J. McIntyre.
Egmont Bay—Rev. Stanislaus Boudreault.

Fort Augustus—Rev. Allan J. McDonald.

Fifteen Point—Rev. P. P. Arsenault.
Georgetown—Rev. S. T. Phelan.

Grand River, Lot 56—Rev. Joseph McLean, Rev. Francis J. McDonald (retired)

Grand River West and Lot 11—Revs. L. J. McDonald and P. D. McGuigan.

Hope River—Rev. Jas. Æ. McDonald.
Indian River—Rev. Mons. D. J. Gillis.

Kinkora—Rev. J. J. McDonald.
Lot 7—Supplied from Alberton.

Lot 11—Supplied from Brae.
Morell—Rev. A. McAulay.

Miscouche—Rev. J. A. McDonald.
Montague West—Rev. James Phelan.

Palmer Road—Rev. J. Chaisson, D. D.
Rollo Bay—Rev. E. Walker, D. D.

Rustico—Rev. Ronald B. McDonald.
Souris—Rev. Donald F. McDonald.

St. Andrew's—Rev. Mons. James McDonald, V. G.

St. Margaret's—Rev. P. Curran.

PROVINCE OF P. E. I.—Ecclesiastical Department—(Continued)

St. Peter's Bay—Rev. R. J. Gillis
Summerside—Rev. D. J. Gregory Mc-
Donald
Tignish—Rev. D. M. McDonald
Tracadie—Rev. P. J. Hogan
Vernon River—Rev. Patrick Doyle, D. D.

Magdalen Islands

Amherst—Supplied from Basin
Basin—Rev. J. Thereault
Etang du Nord—Rev. J. H. Blaquiere
House Harbor—Rev. J. S. Turbide

St. Dunstan's College

Rev. A. P. McLellan, Rector
Revs. M. Monaghan, D. D., T. Curran,
D. D., P. C. Gauthier, T. Campbell;
Messrs. James Donahoe, Geo. Cahill,
Pheleas Leclair, John A. McLellan,
William Cameron, J. B. McIntyre,
D. Cameron, Kenneth McPherson,
Professors.

THE METHODIST CHURCH

Rev. A. Carman, D. D., General Superin-
tendent, Belleville, Ontario
Rev. Geo. M. Campbell, St. John, N. B.,
President of N. B. and P. E. I. Con-
ference.
Rev. W. Fisher, Newcastle, N. B., Secre-
tary

Charlottetown District

Charlottetown, (First Church)—John J.
Teasdale; Supernumery, D. H. Lodge
Charlottetown, (Grace Church)—Jas. W.
McConnell, B. A.
Cornwall—Geo. F. Dawson, M. A.
Little York—R. Opie
Winsloe—Alex. D. McLeod
Pownal—William J. Howard, B. D.
Vernon River—William Wess
Montague—Henry Penna
Murray Harbor—William C. Matthews
Souris—Stephen H. Rice
Mount Stewart—Henry Pierce, B. A.
John J. Teasdale, *Chairman*
R. Opie, *Financial Secretary*

Summerside District

Summerside—Neil McLaughlan, B. A.
Bedeque—Frederick A. Wightman
Margate—William A. Thompson
Grandville and Hunter River—John Dy-
stant
Bideford—William R. Cooper
Alberton—John Goldsmith
West Cape—A. Eugene Chapman, B. A.
Address, Maddock, Lot 8
John Goldsmith, *Chairman*
T. Hicks, *Financial Secretary*

CHURCH OF SCOTLAND

Orwell Head and DeSable—John Good-
will
Orwell—D. M. Campbell
West River—Daniel McLean
PRESBYTERIAN CHURCH
Moderator—M. G. Henry, Ellershouse,
N. S.
Clerk—Thomas Sedgewick, Tatamagouche
N. S.
Charlottetown, St. James' Church—T. F.
Fullerton
Charlottetown, Zion Church—D. B. Mc-
Leod, M. A.
Alberton—H. G. Gratz
Bay Fortune and Souris—J. R. McKay
Belfast—A. McLean Sinclair
Brookfield, Hunter River, and New Glas-
gow—G. Millar
Bloomfield, O'Leary and Brae—Archd.
Gunn
Bedeque—R. S. Whidden
Caledonia—John Sutherland
Cavendish and Stanley—M. H. McIntosh
Cardigan—Adam Gunn, B. A.
Covehead, Brackley Point and St. Peter's
Road—J. Layton
Dundas—
St. Peter's Bay and Midgell—J. W. Mc-
Kenzie, B. A.
Georgetown—A. W. K. Herdman
Montague—W. H. Spencer, B. A.
Mount Stewart and West St. Peter's—A.
Craie
Murray Harbor South—Ewen Gillis
Murray Harbor North and Peter's Road
—John Gillis
Clifton, Granville and Summerfield—
Alex. Sterling
Long River and Kensington—Charles
McKay
Orwell—A. J. McNeill
Princetown—J. M. Fisher
Richmond Bay East and Richmond Bay
West—William Murdoch
Strathalbyn—Malcolm Campbell
Summerside—W. H. Smith
Tignish, Montrose and Elmsdale—A. D.
McDonald, B. A.
Tryon, Bonshaw and Hampton—G. C.
Robertson
Valleyfield and Brown's Creek—R. Mc-
Lean
West Cape and Maddock—D. McLean
West River and Clyde River—G. McIvor
Woodville—A. S. Stewart

Foreign Missionaries
Rev. J. W. McKenzie, Joseph Annand,
Hugh Robertson, New Hebrides; Revs.

PROVINCE OF P. E. I.—Ecclesiastical Department—(*Continued*)

John Morton, K. J. Grant, W. McRae, J. F. Thompson, D. Fraser, Trinidad.

Honan, China—Revs. J. Goforth, D. McGillivray, W. H. Grant, I. F. Smith, M. D.; M. McKenzie, K. McLellan, I. A. Slimmons, R. A. Mitchell, J. Menzies, M. D.; W. McLure, M. D.; W. Malcolm, M. D.

Korea—Rev. R. Grierson, M. D.; W. R. Foote, D. Merae.

Formosa—Revs. G. L. McKay, Wm. Gauld.

Central India—Revs. J. F. Campbell, J. Wilkie, A. P. Ledingham, W. A. Wilson, W. J. Jamieson, J. Buchanan, M. D.; N. H. Russell, F. H. Russell, C. R. Woods, M. D.; I. I. Thompson, M. D.

Home Missionaries

Chinese in British Columbia and Upper Provinces—Revs. A. B. Winchester, J. C. Thompson, M. D.; C. A. Coleman.

Indians of the Northwest—Revs. W. S. Moore, A. J. McLeod, George Arthur, Hugh McKay, C. A. Whyte, John McArthur, George Fleet.

BAPTIST CHURCHES

Charlottetown—G. P. Raymond.

Alberton and Springfield—A. H. Whiteman.

Alexandria, Uigg, Hazel Brook and Belfast—J. C. Spurr, B. A.

Cavendish, Fairview and St. Peter's Road—

Dundas, Annandale and St. Peter's Bay—A. C. Shaw.

East Point and Souris—E. A. McPhee.

Montague and Georgetown—C. W. Turner.

North and Cl. de Rivers and Long Creek—A. F. Browne.

Bedeque—W. H. Warren.

Summerside and Belmont—E. J. Grant.

Tryon and Boushaw—David Price.

Murray River—H. Carter.

Tyne Valley—F. P. Dresser.

P. E. Island Baptist Association

Moderator—E. A. McPhee; Secretary Arthur Simpson, Bay View.

Meets on the Friday previous to the first Sunday in July.

CHURCH OF CHRIST

Charlottetown—Elders, M. Stevenson, Wm. Harris.

CHRISTIAN CHURCH

Charlottetown Central—R. F. Whiston.

Montague—R. W. Stevenson.

East Point—Rev. Mr. Simpson.

Cross Roads, Lot 48—Elders, John McGregor and Robert Stewart.

New Glasgow—Elders, D. Crawford, Geo. M. Stevenson.

Summerside—Elder, Thos. Beaty.

Tryon—Elder, John Crawford.

Tignish—Elder, Jesse Baker.

Christian Association of P. E. I.

Moderator—Rev. O. B. Emery; Secretary—Harry Williams.

SALVATION ARMY

Evangeline Booth, Toronto, Commissioner for Canada and Newfoundland.

Major Pickering, St. John, N. B., Commander for Maritime Provinces

Adj. Macnamara, District Officer for P. E. Island.

Charlottetown Corps—Capt. Wilson.

Summerside Corps—Ensign Sabine.

Outpost—Winsloe Road.

RAILWAY MEN'S CHRISTIAN ASSOCIATION

President—John Dalziel.

Vice-Presidents—John McPherson and Theo. L. Aitken.

Secretary and Treasurer—J. J. Chappell.

Room Committee—Chas. Clark, Horace McEwen, Roderick Corbett, Wm. Turner, Fredk. Damarell, John McLean, Henry Coffin, John Ross, Henry Craswell.

Meets every Sunday afternoon in Mechanic's Hall, Prowse Block, at 4 o'clock.

Y. M. CHRISTIAN ASSOCIATION CHARLOTTETOWN

President—J. D. Seaman.

Vice Presidents—J. H. Ayers, W. E. Bentley, Thomas May, A. C. Duchemin, Prof. Shaw, G. H. Taylor.

Treasurer—H. J. Cundall.

Recording Secretary—W. C. Turner.

Executive Committee—L. L. Beer, Revs. G. P. Raymond, R. F. Whiston, J. W. McConnell, D. B. McLeod, Mr. George Bremner, Mr. J. R. Davison, Mr. Wm. McKie, W. A. Hawley.

Medical Society of P. E. I.

President—Dr. H. D. Johnson, Charlottetown.

1st Vice-President—King's County—Dr. R. D. McDonald, St. Peter's Bay.

2nd Vice-President—Queen's County—Dr. Harrington Bradshaw, New Glasgow.

3rd Vice-President—Prince County—Dr. John Sutherland, Bedeque.

Secretary—Dr. S. R. Jenkins, Charlottetown.

Treasurer—Dr. F. F. Kelly, Charlottetown.

Committee—Drs. Beer, Conroy and Jenkins.

MEDICAL COUNCIL OF P. E. ISLAND

President—Dr. F. P. Taylor

Vice-President—Dr. Jas. McLeod.

Secretary-Registrar—Dr. R. Johnson

Treasurer—Dr. S. R. Jenkins.

Dr. F. D. Beer, Dr. P. Conroy, Dr. R. McNeill.

REGISTERED MEDICAL PRACTITIONERS

- Adlington, Stephen A., Ingram River, N. S., M. D., Baltimore Medical Coll., 1896.
 Allen, Archibald A., Cardigan, M. D. C. M. Univ. Trinity Coll. 1886; Fellow Trinity Medical School, 1886.
 Alley, Gordon T., Charlottetown, M. D. C. M. Univ. McGill Coll., 1899.
 Barnes, Charles Leander, Murray River, M. D. Bowdoin Medical Coll., 1884.
 Bayfield, Geoffrey E., Annapolis, N. S., M. D. C. M. Univ. McGill Coll., 1898.
 Beer, Francis Dyer, Charlottetown, M. D. Harvard Univ., 1860.
 Beers, Alfred Howard, Cherry Valley, M. D. Univ. New York, 1877.
 Blanchard, Edward S., Charlottetown, M. D. Coll. P. & S., New York, 1872, Member M. P. A. Great Britain and Ireland, 1880.
 Bradshaw, Harrington, New Glasgow, M. D. Univ. Pennsylvania, 1867.
 Campbell, Thomas, Northam, M. D. Univ. New York, 1888.
 Clift, George D., Charlottetown, M. D. Univ. New York, New York, 1877.
 Collins, James, Vernon River, M. D. Detroit Medical Coll., 1890.
 Conroy, Peter, Charlottetown, M. D. Laval Univ., Quebec, 1878.
 Covey, Francis James, Crapaud, M. D. Bellevue Hospital Medical Coll., 1882.
 Darrach, Donald, Kensington, M. D. Harvard Univ., 1872.
 Dawson, Thomas, Charlottetown, M. D. Harvard Univ., 1864.
 DeNoyer, Joseph, Salmon River, N. S., M. D. Dartmouth Medical Coll., 1859.
 Dewar, George Forbes, Southport, M. D. C. M. Univ. McGill, 1893.
 Dodd, Simon Walker, Charlottetown, M. D. Harvard Univ., 1867.
 Dorion, J., Tignish, M. D. Laval Univ., Quebec, 1890.
 Donahoe, Michael, Dundas, M. D. C. M. Univ. McGill Coll., Montreal, 1896.
 Dougherty, William H., Cape Traverse, M. D. Univ., New York, 1886.
 Douglas, Albert E. Hunter River, M. D. Univ. New York, 1890.
 Gallant, Andrew, Wellington, M. D. Laval Univ., Montreal, 1893.
 Gallant, Joseph St. Clair, Kinkora, M. D. C. M. Univ. McGill, 1895.
 Gallant, Isidore, Oyster Bed Bridge, M. D. Univ. Penn., Philadelphia, 1877-
 Goff, Harry N., Woodville, M. D. C. M. Univ. McGill, 1893.
 Goodwill, Victor L., Crapaud, M. D. C. M. Queen's Univ., Kingston, Ont., 1899.
 Gouthro, Henry P., Alorton, M. D. Baltimore Medical Coll., 1895.
 Handrahan, James, North Wiltshire, M. D. Univ. New York, 1892.
 Henderson, James, Union Road, M. D. C. M. Univ. Trin. Coll. 1884.
 Honeywell, Wm., Hunter River, M. B. Univ. Trin. Coll., 1877; Member Coll-Phys; and Surgs., Ont., 1877; M. D. C. M. Univ. Trin. Coll. 1882.
 Houston, Jas. C., New Glasgow, M. D. C. M. Univ. McGill, Montreal, 1898.
 Jenkins, John T., Charlottetown, M. R. C. S., England, 1854.
 Jenkins, Stephen R., Charlottetown, M. D. Univ., Pennsylvania, 1884.

PROVINCE OF P. E. I.—Medical Practitioners—(Continued)

- Johnson, Richard, Charlottetown, M. D. Harvard Univ., 1865.
 Johnson, Henry D., Charlottetown, M. D. C. M. Univ. McGill, 1885.
 Johnston, James Æ., Emerald Junction, M. D. C. M. Univ. McGill. Coll., Montreal, 1897.
 Kier, William, Malpeque, M. D. Pennsylvania Medical Coll., 1864, License Medical Council, P. E. I., 1890.
 Kelly, Frederick F., Charlottetown, M. D. Univ., New York, 1888.
 Long, A. E., Tyne Valley, M. D. Univ. Pennsylvania, 1882.
 McDonald, Rodk. J., St. Peter's Bay, M. D. C. M., Univ., Trin. Coll., 1888.
 MacEwen, Henry E., O'Leary, M. D. C. M. Dal Univ., Halifax, 1896.
 MacInnis, John, Red Point, Lot 46, M. D. Harvard Univ., 1870.
 MacIntosh, G. A. C., Murray River, M. D. Univ., Penn., 1875, M. B. Univ. Trin. Coll., Fellow Trinity Medical School, 1880. M. D. C. M. Univ. Trin., Coll., 1889.
 MacIntyre, Peter A., Souris, M. D. C. M. Univ. McGill, 1867.
 MacIntyre, John D., Montague, M. D. C. M. Univ. McGill Coll., 1899.
 McKay, Daniel T., Kensington, M. D. C. M. Univ. McGill, 1892.
 MacKenna, Solomon J., Milcove, M. D. Baltimore Medical Coll., 1897.
 MacLaren, Peter, Brudenell, M. D. C. M. Univ. McGill, 1869, L. R. C. P. & S. Edin., 1878.
 MacLauchlin, Robert D., St. Peter's Bay, M. D. Univ. New York, 1891.
 MacLaughlin, Donald M., O'Leary Station, M. D. C. M. Univ. Trin. Coll., 1886.
 MacLean, Angus, Souris, M. D. Univ. Pennsylvania, 1882.
 MacLellan, James H., Summerside, M. D. C. M. Univ. McGill, 1884.
 MacLellan, Angus A., Souris, M. D. C. M. Univ. McGill, 1889.
 MacLeod, James, Charlottetown, M. D. C. M. Univ. McGill, 1873.
 MacNeill, Röderick, Stanley, M. D. Univ. Pennsylvania, 1872.
 MacNeill, Alexander, Summerside, M. D. C. M. Univ. McGill, 1883.
 McPhail, Colin A., Summerside, M. D. C. M. Trin. Univ. Coll., 1892, F. T. M. S., 1892.
 Martin, Martin, Grand View, M. B. Univ. Trin. Coll., 1880.
 Matheson, J. Renwick, Montague Bridge, M. D. C. M. Univ. McGill, 1893.
 Mathieson, Charles S., Harrington, M. D. C. M. Univ. McGill, 1899.
 Morris, Daniel E., Cardigan, M. D. Univ. Pennsylvania, 1890.
 Murchison, Alexander J., Clyde River, Univ. Trin. Coll., 1890, Fellow Trinity Medical School, 1890, L. R. C. P. & S. Edin., 1890, Licentiate Faculty Phys. and Surgs., Glasgow, 1890.
 Murphy, Patrick C., Alberton, M. D. Univ. New York, 1893.
 Muttart, Ephraim B., Souris, M. D. Harvard Univ., 1861.
 Robertson, Henry W., Crapaud, M. D. Harvard Univ., 1872.
 Robertson, James, Montague, M. D. C. M. Univ. McGill, 1865.
 Ross, Alexander, Alberton, M. D. C. M. Univ. Trin. Coll., 1890.
 Secord, John H., Summerside, M. D. C. M. Univ. McGill Coll., Montreal, 1896.
 Shaw, Robert B., Charlottetown, M. D. C. M. Univ. McGill Coll., 1896.
 Stewart, Duncan A., Georgetown, M. D. Univ. New York, 1890.
 Sutherland, John, Bedeque, M. D. Univ. Pennsylvania, 1876.
 Taylor, Francis P., Charlottetown, M. D. Penn. Med. Coll., 1857, Cert. British Registration, 1867, L. R. C. P. Edin., 1866, F. R. C. P. Edin., 1871.
 Toombs, John G., Mount Stewart, M. D. Bell. Hosp. Medical Coll., 1884.
 Walsh, James, Mount Stewart, M. D. Univ. Pennsylvania, 1877.
 Warburton, James, Charlottetown, L. R. C. P. & S. Edin., 1882.
 Wickham, William W., Summerside, M. D. C. M. Univ. McGill, 1895.
 Wilson, George E., Pownal, M. D. Univ. New York, 1886.

PROVINCE OF PRINCE EDWARD ISLAND—(Continued)

Mystic Orders

MASONIC



GRAND LODGE OF P. E. ISLAND

Grand Master—J. A. Messervy, Charlottetown.

Grand Secretary—Neil McKelvie, Summerside.

SUBORDINATE LODGES

ST. JOHN'S, No. 1, Charlottetown, meets 1st Monday, Dr. James McLeod, W. M.; B. Rogers, sr., S. W.; D. Stewart, J. W.; D. R. MacLennan, Secretary; Geo. W. Wakeford, Treasurer

VICTORIA, No. 2, Charlottetown, meets 2nd Tuesday, R. M. Johnson, W. M.; W. W. Clarke, S. W.; B. Rogers, jr., J. W.; James R. Davison, Secretary

KING HIRAM, No. 3, Summerside, meets 3rd Tuesday

ST. GEORGE, No. 4, Georgetown, meets 1st Saturday

ALEXANDRA, No. 5, Port Hill, meets 1st Thursday

MT. LEBANON, No. 6, Summerside, meets 2nd Tuesday

ZETLAND, No. 7, Alberton, meets 2nd Thursday

TRUE BROTHERS, No. 8, Tryon, meets 2nd Tuesday

ORIENT, No. 11, Souris, meets 3rd Tuesday

MOUNT ZION, No. 12, Kensington, meets 1st Thursday

ST. ANDREWS, No. 13, Montague Bridge meets 1st Monday

PRINCE EDWARD, No. 14, Stanley Bridge, meets 1st Wednesday

On the Register of the Grand Chapter of Nova Scotia

ALEXANDRA, ROYAL ARCH CHAPTER, No. 12, meets first Wednesday at Masonic Hall, Charlottetown, F. H. Beer, H. P.; John G. J. Welton, Secretary

PRINCE EDWARD, ROYAL ARCH CHAPTER, No. 13, Summerside, meets 2nd Wednesday in February, May, August and November

KNIGHT TEMPLARS—J. A. Messervy, Em Preceptor; B. Rogers, Jr., Registrar, Scottish Rite

MASONIC TEMPLE COMPANY

President—S. W. Crabbe; Directors—Benj. Rogers, T. A. McLean, W. W. Stanley, Geo. W. Wakeford; Secy-Treas.—D. McLean

INDEPENDENT ORDER OF ODDFELLOWS



SOVEREIGN GRAND LODGE

Grand Sire—Hon. A. C. Cable, Covington, Ohio

Deputy Grand Sire—

Grand Secretary—I. F. Grant, Kentucky

GRAND LODGE OF THE LOWER PROVINCES

Grand Master—John D. McKean, Westville, N. S.

Grand Deputy Master—C. B. Allan, St. John

Grand Secretary—J. C. P. Frazee, Truro, Nova Scotia

Annual Communication of the Grand Lodge for 1900 will be held at Sydney, C. B., Wednesday, August 8th, at 10.30 a. m.

DISTRICT DEPUTIES, P. E. I.

Charlottetown—A. W. Mitchell, G. C.

Summerside—W. N. Huestis

Alberton—T. B. Woodman

SUBORDINATE LODGES IN P. E. I.

MEETS
St. Lawrence, No. 8, Charlottetown,
P. E. I., South side Queen Square....Monday

MEETS

Prince Edward, No. 22, Summerside,
P. E. Island.....Thursday

Wildy Lodge, No. 27, Charlottetown,
P. E. I., South Side Queen Square.....Friday

Tokalon, No. 66, Alberton, P. E. I.....Friday

Alpha Rebekah Lodge, No. 10, first and third
Tuesdays in every month

Rebekah Lodge, Summerside,—Maple Leaf,
No. 13, meets Monday

GRAND ENCAMPMENT OF THE MARITIME

PROVINCES OF CANADA, I. O. O. F.

Grand Patriarch—F. W. D. Harper, Westville,
N. S.

Grand Scribe—Melville McKean, Pictou,
N. S.

Grand Representatives to Sovereign Grand Lodge—T. E. Smith, St. John (west) N. B. (Encampment); H. E. Codner, St. John, N. B. Grand Lodge; T. B. Grady, Summerside Grand Lodge.

SUBORDINATE ENCAMPMENTS

Port La Jolie, No. 4, Charlottetown, P. E. I.,
South side Queen Square, 2nd Wednesday.

LOYAL ORANGE LODGE

Provincial Grand Lodge of P. E. I.

R. W. Grand Master, M. McLeod, Ch'town
R. W. Grand Sec'y, Angus Beaton, Brookfield
Next place of meeting Summerside on the
3rd Tuesday in February, 1900

Queen's County Lodge

County Master, John Diamond, Trilby
Recording Sec'y, R. K. Brace, Ch'town
Financial Sec'y, John Hammill, "

King's County Lodge

County Master, J. McDonald, Whim Rd Cross
Recording Sec'y, N. McDonald, Commercial "
Financial Sec'y, N. Nicholson, Valleyfield

Wiltshire District—Queen's

District Master, W. G. Darke, Brookfield
Recording Sec'y, Fred. Wise, North Milton

Crapaud

District Master, Edward Francis, Crapaud
Recording Sec'y, W. H. Clarke, "

Strathalbane

District Master, R. McKenzie, Springfield

Western District—Prince County

District Master, J. H. Yeo, Victoria West
Recording Sec'y, A. A. McCaul

Union District—King's County

District Master, John D. Bruce, Valleyfield
Recording Sec'y, M. McDonald, Murray
Harbor Road.

Southern District

District Master, Wm. Nicholson, Caledonia
Recording Sec'y, Norman Stewart, "

INDEPENDENT ORDER OF FORESTERS

OFFICERS OF THE HIGH COURT OF PRINCE
EDWARD ISLAND

H. C. R. S. H. W. Robertson, Crapaud; V. C.
R. R. McKay, Kensington; H. S. L. W. Fowler,
Bedouque; H. Treas., J. H. Bell, Charlottetown,
H. Phys., Dr. Douglas, Hunter River; H. Coun.,
Chas. Murphy, Summerside; Chaplain, Rev.
Ewen Gillis.

Court Mount Stephen, No. 3741, Charlottetown

C. D., R. M. Johnson; C. R., E. E. Jordan;
V. C. R., K. Finlayson; R. S.,———Jardine;

F. S.,———; Treas., E. H. Duchemin.

Meets first and third Tuesday in Forester's
Hall, Prowse Block.

*Prince George Encampment, No. 73,
Royal Foresters*

Ill. Com., R. M. Johnson; Ill. Lieut. Com.,
J. W. Sutherland; Ill. Past Com., F. S. Jost;
Ill. Orator, L. W. Fowler; Ill. Archivist, M.
McLeod; Ill. Capt. of Guard, J. H. Bell; Ill.
Marshal, K. Finlayson.

CANADIAN ORDER OF FORESTERS

HIGH COURT CANADA

R. Elliot, H. C. R., Ingersoll, Ontario
Thomas White, H. Sec'y, Brantford, Ontario
Ernest Gartung, Supt. of Organization

Court Charlottetown, No. 576, Charlottetown
—W. G. Gillispie, C. R.; W. N. Harper, Vice

C. R.; F. S. Mitchell, R. S.; Neil McNevin, F. S.
James Waddell, Treas.; Rev. G. P. Raymond;
Chap.; Job Ward, S. W. W.; L. Ramsay, J.
W. W.; R. Meikle, S. B.; W. C. Gillispie, J. B.

Meets in Mechanics' Hall, Prowse Block, first
and third Thursdays of the month.

National and other Societies

CALEDONIA CLUB

John A. McLaren, Chief; John McPhee, Pres-
ident; R. McMillan, 1st Vice President; John
Gillis, 2nd Vice President; James Paton, Treas-
urer; D. R. Macleannan, Recording Secretary;
Alex. MacDonald, Financial Secretary; John
McSwain, Corresponding Secretary; Peter Fer-

guson, Piper

Regular monthly meeting of Caledonia Club
held the last Tuesday in each month in Club
Room, MacEachern's building, Queen Street.

BENEVOLENT IRISH SOCIETY

Patron, Hon. G. W. Howlan; President, D.
O'M. Reddin; 1st Vice President, Jas. Edmunds;
2nd Vice President, Thos. E. Flynn; Treasurer,
P. Bourke; Secretary, Thomas Driscoll; Chief
Marshall, John Connolly; Sergeant-at-Arms,

Jas. McMahon; Charitable Committee, W.
Cantwell, P. Clarkin, Peter Flynn, Jos. Hughes,
Peter E. Bradley.

Regular Meetings held on the 1st Monday of
each month, at 8 p. m., at their Hall, Kent St.

ANCIENT ORDER OF HIBERNIANS

Provincial President, F. F. Kelly M. D., City;
Provincial Vice Pres., J. A. Griffith; Provincial
Treasurer, Michael Walsh; Provincial Secre-
tary, Daniel J. Riley; Chaplain, Rev. Dr. Mon-
aghan; County President, Peter H. Trainor;
President, John P. Clarkin; Vice President,

John J. Trainor; Treasurer, John Griffin;
Financial Secretary, P. S. Brown; Recording
Secretary, Joseph O'Connor; Sergeant-at-Arms,
Thos. Butler; Marshal, P. McMahon; Outside
Guard, Joseph Hughes

 SONS OF ENGLAND BENEVOLENT SOCIETY

Lodge Fton, No. 148—District Deputy for P. E. I., Albert Douse; Past President, Thomas Dover; President, Edward Rendle; Vice President, Thomas Evans; Secretary, A. T. Newson; Treasurer, Theo. Moore; Chaplain, Harry Chandler.

R. R. meets first and third Thursdays each month.

W. R. meets second and fourth Thursdays

each month, in S. O. E. Hall, Brown's Block.

Lodge Prince Edward, No. 216—Past President, Fred P. Newson; President, W. H. F. Gill; Vice President, W. R. Borcham; Secretary, E. H. Duchemin; Treasurer, Arthur Gates.

Meets second and fourth Tuesdays in each month, in S. O. E. Hall, Brown's Block.

 SOCIETY OF ST. VINCENT DE PAUL

Spiritual Director, Rev. Dr. Morrison; President, John Caven; Vice President, Patrick McCarey; Treasurer, Hon. A. A. McDonald;

Assistant Treasurer, James McIsaac; Secretary, Henry Fitzgerald

 WOMEN'S CHRISTIAN TEMPERANCE UNION

President, Mrs (Dr) R Johnson; Vice Pres. Mrs Hensley, St Paul's Church; Mrs Matheson, Zion Church; Mrs A Lord, St James' Church; Mrs Down, Grace Church; Mrs Armour, Baptist Church; Mrs Beales, Christian Church;

Corresponding Secretary, Mrs W P Doull; Recording Secretary, Miss Henderson; Treasurer, Miss McRae; Auditor, Mrs R J Campbell
Meets every Monday at 330 p m

 YOUNG WOMEN'S CHRISTIAN TEMPERANCE UNION

President, Miss Annie Johnson; Vice Presidents, Miss Laura Hughes, Methodist; Miss Annie McDougall, Presbyterian; Miss Millie Chappell, Church of England; Miss M

Stevenson, Baptist; Recording Secretary, Miss Bessie Gregor; Corresponding Secretary, Mrs R K Bruce; Treasurer, Mrs H J Worth
Meets 1st and 3rd Thursdays

 NATURAL HISTORY AND ANTIQUARIAN SOCIETY

President, John Newson; Vice President, Jno. MacSwain; Secy.-Treas. Lawrence W. Watson, M. A.; Executive Committee, the above and

Miss Pippy, Messers. J. W. Bulman, M. E., J. D. Seaman.
Meetings held fortnightly.

 Hospitals

PRINCE EDWARD ISLAND HOSPITAL

ST. PETER'S ROAD, CHARLOTTETOWN

Board of Trustees, Charles Palmer, Q. C., Chairman; L. L. Beer, Richard Johnson, H. J. Cundall, A. B. McKenzie, George Bremner, Ronald McMillan, Judge Fitzgerald.
Medical Board, F. D. Beer, M. D.; F. P. Taylor, M. D.; James Warburton, M. D.; James

McLeod, M. D.; Richard Johnson, M. D.; S. R. Jenkins, M. D.; H. D. Johnson, M. D.; Alex. McNeill, M. D.; R. B. Shaw, M. D.
Surgeon Dentists, Drs. Bagnall and Robins
Matron, Miss Tynan.
Secretary-Treasurer, B. Balderston

 CHARLOTTETOWN HOSPITAL

DUNDAS ESPLANADE, CHARLOTTETOWN

Superioresse—Sister Saint Honorine; Visiting Physicians—Drs. Conroy, James McLeod, S. R. Jenkins, F. F. Kelly, R. B. Shaw.

All kinds of
Fashionable
Boots and Shoes
made to order

Thos. Dover

The leading

Boot and Shoemaker

QUEEN STREET

Near Carter's Confectionery Store

Charlottetown P. E. Island

Repairing done
at short notice

Prices low

Quality Good

ADVERTISERS' INDEX

Carter, Geo. & Co., Stationers, &c, 4th page cover	36	Maceachern, John, Insurance, 2nd page cover	
Carvell, W. F. H., Barrister, etc.,	36	McFarlane, Son & Hodgson, Wholesale	38
Charlottetown Steam Navigation Company,	50	Stationers,	38
Davies & Haszard, Barristers, Solicitors,	36	McLaren, Daniel, Tailor,	2nd cover page
Dickie, H. T., M. D.,	36	McLeod, M. & D. C., Attorneys, etc.,	32
<i>Examiner</i> Publishing Company	46	McLeod, Morson & McQuarrie, Attys., etc.,	32
Fletcher, C. P., Pianos and Organs	28	McLeod, John & Co., Merchant Tailors,	44
Gordon & McLellan, Tailors,	3rd page cover	Mitchell, C. J., Books and Stationery,	42
<i>Guardian</i> Publishing Company	64	Palmer, Robert & Co., Sash & Door Factory,	28
Hickey & Nicholson, Tobacco Manuf 's	40	<i>Patriot</i> Publishing Company	52
Hutcheson, W. A., Confectionery	44	Peters, Ings & Saunders,	34
Hyndman & Co., General Insurance Agents	2	Prowse Bros., bottom lines,	1 to 29
Joist, R. K., Boot & Shoes, head lines,	1-29	Simmons, Geo. H., Manufactur Carbonated	
Kennedy, A. & Co.,	40	Beverages,	48
Lyons, C. & Co., Acadia Coal Depot,	48	Stewart, W. S., Barrister, etc.	34
Mellish, J. T., Lawyer,	34	Stewart, D. B., Insurance Agent,	30
Merchants Bank of P. E. Island,	1	Stewart, Bruce & Co., Machinists,	42
Moore, F. W. L., Attorney-at-Law,	32	Tanton, W. N., Jeweler,	54
Murley & Garnhum, Printers and Book-		Taylor, E. W., Watches, etc.,	3
binders, foot of right hand Calendar		Taylor, G. H., Watches, etc.,	1
pages,		Worth, H., Livery Stable,	30
McDonald, Eneas, Lawyer,	34	Whitlock, W. C., Pictures, etc.,	64
McDonald, J. A., Barrister, Solicitor, etc.,	32	Warburton & McKinnon, Solicitors, etc.	36
McDonald, Angus, Ales, Wines, etc.,	30		

GENERAL INDEX

	PAGE		PAGE
Acknowledgments to Deeds, Commissioners for taking	58	Government, Dominion	37
Barristers, Attorneys, etc.	61	" Provincial	51
Benevolent Irish Society	76	" Poor House	67
Boards of Health	65, 66	Health Officers	65
British Empire—Royal Lineage	31	Hibernians, Ancient Order of	76
" " The Queen	31	Hospital for the Insane	67
" " The Population, etc.	33	" Charlottetown	77
" " Govs. General of Dom.	35	" Prince Edward Island	77
Cabinet Ministers, etc., British Empire	33, 35	Inland Revenue Department	47
" " Dominion of Canada	37	Inspector of Gas	47
Caledonia Club	76	" Weights and Measures	47
Calendar	4, 27	Irish Society, Benevolent	76
Charlottetown, Corporation of	68	Justices of the Peace	53, 57
Church Directory	70, 72	Land Surveyors	67
City of Charlottetown, City Court	68	Law and Justice Department	57
" " Common Council	68	Lawyers	61
" " Court of Appeal	68, 69	Legislative Assembly	53, 57
" " Fire Department	69	Magistracy, The	53, 57
" " Officers	68	Marine and Fisheries Department	75
" " Stipendiary Magistrate's Court	68	Masonic	75
Civic Assessment	68	Medical Association, Provincial	73, 74
Clergy	70, 72	Militia (P. E. I. District)	49
Close Season for Fish	47	Model or Stock Farm	67
Commissioners of Sewers and Water Supply	68	Money Order Offices	43
Commissioners for taking Acknowledgments to Deeds	58	National and other Societies	76
Commissioners for taking Affidavits	59	Natural History and Antiquarian Society	77
County Courts	62, 63	Notaries Public, etc.	61
Commissioners for taking Affidavits	58	Oddfellows, I. O. of	75
Supreme Court	58	Orange Society	68
Commissioners for taking Recognizance of Bail	60	Poor House	67
Consuls	69	Population, etc., British Empire	33
Coroners	65	Population, etc., Dominion of Canada and Newfoundland	35
Corporation of Charlottetown	68	Port Wardens	47
" " Summerside	69	Post Office Department	39-43
County Courts	62, 63	Prince Edward Island	51
Courts of Appeal in Equity	57	Prince of Wales College	63
" " (Civic)	63	Provincial Government Officers	51
" " Chancery	57	Provincial Medical Association	73-74
" " Chancery, Terms of	57	Railway Officials	43
" " City	68	Railway Men's Christian Association	47
" " County	62, 63	Receivers of Wrecks	47
" " Exchequer	57	Recognizance of Bail, Com'rs for taking	60
" " Probate and Wills	57	Royal Family, The	31
" " Stipendiary Magistrates	68	Salvation Army	72
" " Supreme	57	Savings Bank, (Dominion Government)	47
Customs Department	45	Schools	63-64
Doctors, etc.	73, 74	Senators for P. E. I.	37
Dominion of Canada	35	Sheriff's	57
" " Area and Population	35	Shipping	45
" " Privy Council, etc.	37	Societies, Mystic, National, etc.	75-77
Dominion Department for P. E. I.	45	Sons of England	77
Ecclesiastical and Religious	70, 72	St. Dunstan's College	64
Educational	63, 64	St. Vincent de Paul Society	77
Exchequer Courts of Canada (P. E. I.)	57	Stipendiary Magistrates	53
Excise and Inland Revenue Departments	47	Stock Farm	67
Executive Council	51	Summerside, Corporation of	69
Finance Department, (Dominion)	47	Supervisors	67
Fish Department, Charlottetown	69	Supreme Court, Terms of	58
Fish, Close Season for	47	Telegraphic Tolls	69
Fishery Service	47	Telephonic Tolls	70
Foresters, I. O.	76	Weather Table	29
Foresters, C. O.	76	Weights and Measures, Inspector of	47
Gas Inspectors	47	Women's Christian Temperance Union	77
		Y. M. C. Association	22
		Y. W. C. T. Union	77



Murley & Garnhum

— Steam Printers —
— & Blank Book —
— Manufacturers —

The recognized leaders
in all kinds of

PRINTING & BOOKBINDING

Lower Queen Street

Charlottetown, P. E.

7

