

**CIHM
Microfiche
Series
(Monographs)**

**ICMH
Collection de
microfiches
(monographies)**



Canadian Institute for Historical Microreproductions / institut canadien de microreproductions historiques

© 1995

Technical and Bibliographic Notes / Notes technique et bibliographiques

The Institute has attempted to obtain the best original copy available for filming. Features of this copy which may be bibliographically unique, which may alter any of the images in the reproduction, or which may significantly change the usual method of filming are checked below.

- ☒ Coloured covers / Couverture de couleur
- ☐ Covers damaged / Couverture endommagée
- ☐ Covers restored and/or laminated / Couverture restaurée et/ou pelliculée
- ☐ Cover title missing / Le titre de couverture manque
- ☐ Coloured maps / Cartes géographiques en couleur
- ☒ Coloured ink (i.e. other than blue or black) / Encre de couleur (i.e. autre que bleue ou noire)
- ☒ Coloured plates and/or illustrations / Planches et/ou illustrations en couleur
- ☐ Bound with other material / Relié avec d'autres documents
- ☐ Only edition available / Seule édition disponible
- ☐ Tight binding may cause shadows or distortion along interior margin / Le reliure serrée peut causer de l'ombre ou de la distorsion le long de la marge intérieure.
- ☐ Blank leaves added during restorations may appear within the text. Whenever possible, these have been omitted from filming / Il se peut que certaines pages blanches ajoutées lors d'une restauration apparaissent dans le texte, mais, lorsque cela était possible, ces pages n'ont pas été filmées.
- ☐ Additional comments / Commentaires supplémentaires:

L'Institut a microfilmé le meilleur exemplaire qu'il lui a été possible de se procurer. Les détails de cet exemplaire qui sont peut-être uniques du point de vue bibliographique, qui peuvent modifier une image reproduite, ou qui peuvent exiger une modifications dans la méthode normale de filmage sont indiqués ci-dessous.

- ☐ Coloured pages / Pages de couleur
- ☐ Pages damaged / Pages endommagées
- ☐ Pages restored and/or laminated / Pages restaurées et/ou pelliculées
- ☒ Pages discoloured, stained or foxed / Pages décolorées, tachetées ou piquées
- ☐ Pages detached / Pages détachées
- ☒ Showthrough / Transparence
- ☐ Quality of print varies / Qualité inégale de l'impression
- ☐ Includes supplementary material / Comprend du matériel supplémentaire
- ☐ Pages wholly or partially obscured by errata slips, tissues, etc., have been refilmed to ensure the best possible image / Les pages totalement ou partiellement obscurcies par un feuillet d'errata, une pelure, etc., ont été filmées à nouveau de façon à obtenir la meilleure image possible.
- ☐ Opposing pages with varying colouration or discolourations were filmed twice to ensure the best possible image / Les pages s'opposant ayant des colorations variables ou des décolorations sont filmées deux fois afin d'obtenir la meilleure image possible.

**This item is filmed at the reduction ratio checked below/
Ce document est filmé au taux de réduction indiqué ci-dessous.**

A horizontal number line with 16 equal segments. Above the line, the labels 10x, 14x, 18x, 22x, 26x, and 30x are placed above the 1st, 4th, 7th, 10th, 13th, and 16th segments respectively. Below the line, the labels 12x, 16x, 20x, 24x, 28x, and 32x are placed below the 3rd, 6th, 9th, 12th, 15th, and 16th segments respectively. A checkmark is drawn inside the 4th segment, which is labeled 14x above and 16x below.

The copy filmed here has been reproduced thanks to the generosity of:

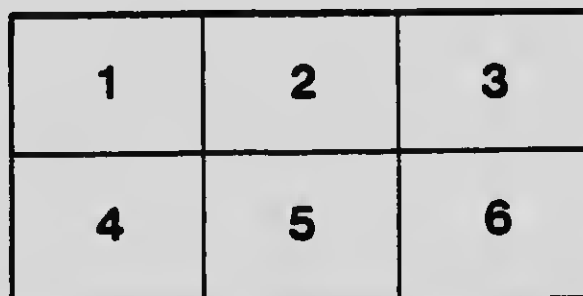
National Library of Canada

The images appearing here are the best quality possible considering the condition and legibility of the original copy and in keeping with the filming contract specifications.

Original copies in printed paper covers are filmed beginning with the front cover and ending on the last page with a printed or illustrated impression, or the back cover when appropriate. All other original copies are filmed beginning on the first page with a printed or illustrated impression, and ending on the last page with a printed or illustrated impression.

The last recorded frame on each microfiche shall contain the symbol \rightarrow (meaning "CONTINUED"), or the symbol ∇ (meaning "END"), whichever applies.

Maps, plates, charts, etc., may be filmed at different reduction ratios. Those too large to be entirely included in one exposure are filmed beginning in the upper left hand corner, left to right and top to bottom, as many frames as required. The following diagrams illustrate the method:



L'exemplaire filmé fut reproduit grâce à la générosité de:

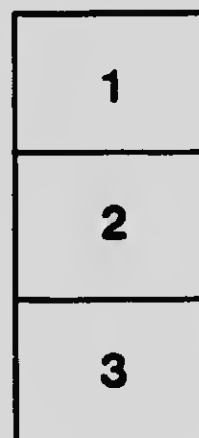
Bibliothèque nationale du Canada

Les images suivantes ont été reproduites avec le plus grand soin, compte tenu de la condition et de la netteté de l'exemplaire filmé, et en conformité avec les conditions du contrat de filmage.

Les exemplaires originaux dont la couverture en papier est imprimée sont filmés en commençant par le premier plat et en terminant soit par la dernière page qui comporte une empreinte d'impression ou d'illustration, soit par la second plat, selon le cas. Tous les autres exemplaires originaux sont filmés en commençant par la première page qui comporte une empreinte d'impression ou d'illustration et en terminant par la dernière page qui comporte une telle empreinte.

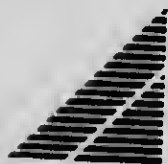
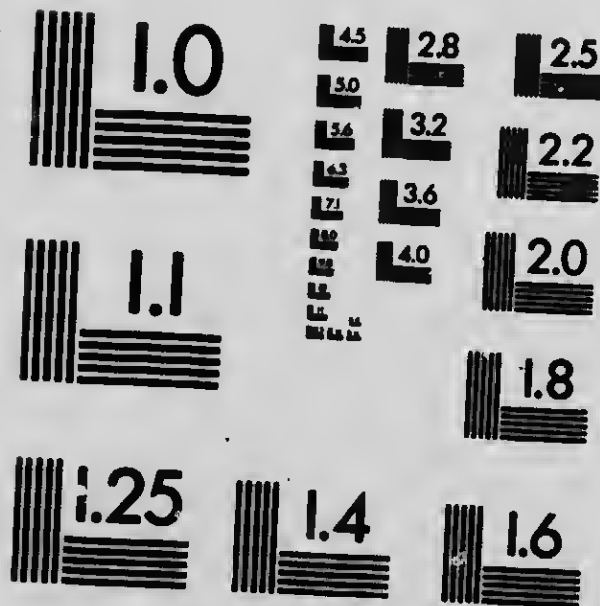
Un des symboles suivants apparaîtra sur la dernière image de chaque microfiche, selon le cas: le symbole \rightarrow signifie "A SUIVRE", le symbole ∇ signifie "FIN".

Les cartes, planches, tableaux, etc., peuvent être filmés à des taux de réduction différents. Lorsque le document est trop grand pour être reproduit en un seul cliché, il est filmé à partir de l'angle supérieur gauche, de gauche à droite, et de haut en bas, en prenant le nombre d'images nécessaire. Les diagrammes suivants illustrent la méthode.



MICROCOPY RESOLUTION TEST CHART

(ANSI and ISO TEST CHART No. 2)



APPLIED IMAGE Inc

1653 East Main Street
Rochester, New York 14609 USA
(716) 482 - 0300 - Phone
(716) 288 - 5989 - Fax

TRAVELLERS AND SETTLERS

Travellers or Settlers coming into Canada may exchange their money for Canadian money at any branch of the

Sterling Bank of Canada

Our Managers will be glad to give reliable information or advice as to local conditions and opportunities.

Branches:

MONTREAL - TORONTO - WINNIPEG

For Full List of Branches See Inside Back Cover

Opportunities in Ontario

1914

Provincial Booklet Series



**Containing Extracts from
Heaton's Annual**



Heaton's Agency, Toronto

**Copyright by Ernest Heaton
Toronto, 1914**

HEATON'S ANNUAL

Tenth Year

CONTENTS 1914 EDITION

DIRECTORIES.—Official Directory (Members of Senate, House of Commons, Provincial Legislatures, Titled Canadians, Government Officials, etc.) Canadian Railways, Canadian Steamship Lines, Registry Offices (i.e., for Deeds, Chattel Mortgages, etc.). Banking Towns (showing Branch Banks, Railway Connection, Population, etc.). Insurance Directory (List of Insurance Companies Licensed to do Business in Canada in Every Line, with Financial Standing, Head Office, etc.). Solicitors, Customs Brokers and Forwarders.

COMMERCIAL INFORMATION.—Postal Rates, Trust Companies, Taxes on Commercial Travelers, Regulations affecting Joint Stock Companies, Foreign Corporations, Patents, Trade Marks, Copyright, Exchange Tables for all Countries, Weights and Measures, Freight and Other Tables, Railway Fares Toronto and Montreal to all Commercial Towns in Canada, etc.

CUSTOMS INFORMATION.—The Official Tariff with Alphabetical Index, Orders-in-Council, 4,500 Departmental Rulings, Decisions of Customs Board and Customs Regulations all revised to date of publication, Customs Ports and Outports, Treaties with France and Japan, Belgium, Holland, Italy, West Indies, etc.—This is recognized as the standard work on Canadian Customs Law.

DESCRIPTIONS OF TOWNS.—A Gazetteer of all Towns with Population of 1,500 and over in Eastern Provinces, and 400 and over in the West, compiled from official returns from the local Boards of Trade, giving Population, Shipping Facilities, Hotels, Existing Industries, Municipal Statistics, Power Rates, Inducements offered to New Industries, also Special Opportunities for New Industries and Business Openings, and Illustrated Advertisements of Progressive Towns.

AGRICULTURAL AND FRUIT DISTRICTS.—A concise description of districts in each Province to which immigration is attracted, Price of Lands, Dominion and Provincial Regulations affecting Crown Lands, etc., Local References.

GENERAL INFORMATION.—A mine of concise information officially revised by the Dominion and Provincial Governments, arranged in Encyclopædic form.

PRICE (Cloth Bound) FIVE SHILLINGS

For sale by all leading booksellers; Heaton's Agency, Publishers, Toronto; and The Times Book Club, Oxford St., London, Eng.

Opportunities in Ontario

Agriculture

BEANS. Bean growing on a commercial scale is at present confined to Kent, and Elgin Counties. Annual crop in 1912, 1,182,132 bushels, valued at from \$1.70 per bushel up, according to variety and quality. The bulk is marketed at home, surplus in Great Britain, France and West Indies.

BEEKEEPING. The Dominion census of 1901 gives the province a total of 116,403 colonies, but the Ontario Government reports for 1910 give 100,000 colonies. Over 50% are wintered in the cellar, and the rest, with a few exceptions, are wintered out of doors, protected. To the farmer who will make a business of keeping and looking after 10 to 25 or 50 colonies, a splendid profit may be made on the necessary investment. The Ontario Beekeepers' Association has over 250 members. They report that in 1912 10,463 colonies gave an average return of 23 lbs.

CANNING FACTORIES. There are over 150 factories that put up fruits and vegetables in tins and in glass.

DAIRYING. The value of dairy products in 1913 is estimated at \$40,000,000. Considerably over half the cheese produced in Canada is made in Ontario. The province exports more cheese than the whole of the U.S. Of butter, the greater portion is made on the farm. The manufacture of condensed milk is becoming an important industry; four such factories established in recent years. In some districts casein is being manufactured. The furnishing of milk and cream for consumption as such in towns and cities is receiving more and more consideration, and the volume of raw material devoted to this trade is increasing rapidly from year to year. For openings for creameries, see Boards of Trade Register in this book. See under Fodder Crops, and write for pamphlet on Dairying to Department of Agriculture, Toronto.

NEW CANADIAN RECORD. A two-year-old Holstein-Friesian heifer, Netherland-Faloret, owned by W. H. Cherry, of Garnett, Ontario, gave the following results on a 30-day



Parliament Buildings, Toronto. See page 71

official test in 1913: In 7 days, 436 lbs. of milk and 21.65 lbs. of butter; in 14 days, 863 lbs. of milk and 42.70 lbs. of butter; in 30 days, 1,854 lbs. of milk and 89.65 lbs. of butter. This record has never been surpassed by any cow in Canada.

FARM VALUES.

	1901	1912
Land.....	\$585,354,294	\$758,729,268
Buildings.....	226,575,228	335,141,520
Implements.....	59,897,513	86,231,210
Live Stock.....	129,496,261	225,848,942
	<hr/> \$1,001,323,296	<hr/> \$1,405,950,940

FIELD CROPS. According to Dominion Census Bulletin, the total value of all field crops of Ontario was \$204,002,000 in 1910; of all Canada, \$507,185,500. In 1912, Ontario exceeded the two best Prairie Provinces by \$26,000,000.

FLAX. Cultivated mainly for its fibre. Total area under cultivation, from 12,000 to 15,000 acres. The production of seed, about 12,000 bushels. There are large oil mills and about 45 scutching mills in Western Ontario. The quantity of oil produced varies from 15,000 to 20,000 barrels yearly, all marketed in the Dominion. The fibre finds a ready market in the U.S. and Great Britain.

FODDER CROPS. The area of pasture is about 3,082,671 acres. Write for pamphlet on Dairying to Department of Agriculture, Toronto.

BARLEY. Formerly grown for malting, now grown for feeding. Area increased from 438,734 acres in 1902, to 647,382 in 1912. Yield about 20 bushels per acre.

CLOVER. Red clover and alsike are grown extensively both for hay and for seed. Alfalfa or lucerne is being more extensively grown than formerly.

HAY. The area of hay is about 3,367,369 acres, yielding on an average 1.35 tons per acre, and nearly 2 tons in more favorable years. Hay forms in value about one-third of all the field crops.

INDIAN CORN. Most farmers grow a few acres of Indian corn which is stored in the silo. It grows from six to ten feet high. Crop averages 10 to 15 tons per acre, with occasionally much larger yields. Half of the corn produced is grown in the counties of Essex and Kent. It is used partly for distilling, partly for production of fat hogs.

MIXED GRAINS. In 1912, 448,402 acres were sown to peas, oats, barley, etc., yielding 16,382,161 bushels.

OPPORTUNITIES IN ONTARIO

OATS. Next to hay the most valuable field crop, worth thirty-five to forty millions annually. Write for pamphlet on Dairying to Department of Agriculture, Toronto.

PEAS. In 1912, 221,524 acres of peas were grown, yielding an average of 16.6 bushels. Ontario peas are considered the best in the world.

FRUIT GROWING. The total orchard acreage in 1912 was 294,675 acres; small fruits, 334,795 acres; vineyards, 11,634 acres. The bulk of the fruit is consumed by local consumption. The Western markets for Ontario tender fruits are of growing importance. Peaches, apples and pears are exported to Great Britain. An experimental fruit farm has been established in the Niagara District, one object being to develop varieties suitable for long shipment. Over 50 co-operative Fruit Growers' Associations do a good work in producing, packing and marketing fruits. The industry is rapidly developing. For descriptions and prices of fruit lands see under "Agric. and Fruit Districts." Write to Department of Agriculture, Toronto, for pamphlet on fruit growing, list of associations, and special bulletins on apples, grapes, peaches, etc.

APPLES. According to the Dominion Census of 1911, there were in Ontario 7,766,257 apple trees, with a total production of 6,305,462 bushels of fruit. These figures are low, as the year 1910 was one of comparative failure of the apple fruit. The province produces 60% of the total crop of apples in Canada. The bulk of the crop is sold within the Province. During the past 10 years Ontario has exported more apples to Great Britain than any other province or state on the continent. The Western Provinces take annually about 1,000,000 bushels. This market is growing. The principal commercial apples in order of ripening are: Duchess, Wealthy, Snow, Ribston-pippin, McIntosh, King, Greening, Baldwin, Golden Russett, Spy.

GRAPES. The counties Lincoln, Wentworth and Welland produce 95% of grapes grown. In these counties there were, in 1913, 8,889 acres of vineyard. The total output in 1913 was 36,000 short tons. The vine begins to bear at four years, and continues a lifetime. A grower in Niagara District estimates maintenance and profit per acre as follows: Cost of bringing into bearing, \$75; annual outlay when bearing (pruning and tying, cultivation, spraying three times, packing and packages), \$58.50. Average yield 3 tons, or 700 baskets, at average price, 15c. —\$112.50. Net returns, \$54. Markets, Toronto, Ham-

Itton, and other neighboring cities; Western and Eastern Provinces. Wine manufacture absorbs about $\frac{1}{3}$ of crop. The bottling of unfermented grape juice has been started on a large scale. Good grape land costs from \$80 to \$125 per acre. See under Wine. Write to Department of Agriculture, Toronto, for Bulletin, Grape Growing in Ontario.

PEACHES. Trees begin to bear in four years and should last 15 years. An expert peach grower estimates cost of maintenance and profit per acre as follows: Spraying, manuring, pruning and cultivation, \$28; picking, packing and packages, \$53; hauling to station, say \$5; total cost, \$86. Returns, 700 baskets (11 quarts), at 50c.—\$350. Net return, \$264. The average orchard will yield less than the above figures. The best varieties are the Yellow St. John, Crawford, Elberta and New Pacific. Peach trees 100 to the acre produce fruit when 4 years old and yield profitably till about the 15th year. In 1913, 4,392 cases were exported to Great Britain.

PEARS. Pears net the grower from \$65 to \$100 per acre. The Bartlett, Anjou, Duchess and other varieties are grown. Pears are exported to Great Britain.

PLUMS. The Burbank, Bradshaw, Monarch and Anjou are the leading varieties. The average net profit is \$40 to \$75 per acre.

OTHER FRUITS. Cherries, strawberries, raspberries, blackberries, gooseberries and currants yield from \$60 or \$100 up to \$500 an acre in some cases. If the tree is well covered in winter, figs will ripen in the Niagara District. Melons and citrons do well in Southern Ontario.

GRAIN CROPS. In 1913 the total yield, and average yield per acre by hushels, as shown by threshers' measures, Dominion Returns, was as follows: Spring wheat, 2,182,000 hushels from 111,000 acres, average 19.66; winter wheat, 17,669,000 from 739,000 acres, average 23.91; oats, 105,159,000 from 2,814,000 acres, average 37.37; barley, 14,589,000 from 485,000 acres, average 30.08; rye, 1,567,000 from 85,000 acres, average 18.43; huckwheat, 3,688,000 from 193,000 acres, average 19.11; peas, 3,431,000 from 190,000 acres, average 18.06; beans, 670,000 from 40,000 acres, average 16.74. Average yield in hushels per acre in the last 31 years: Spring wheat, 16.0; winter wheat, 21; oats, 35.6; barley, 27.8; rye, 16.4; huckwheat, 20.7; peas, 19.2; beans, 17.2.

LIVE STOCK. The value of the live stock on the farms has increased by over \$80,000,000 in the past ten years. The value of live stock killed and sold increased from \$34,450,583 in 1898, to \$84,982,339 in 1912.

OPPORTUNITIES IN ONTARIO

CATTLE. The returns for 1913 show that in Ontario there were 1,141,071 milch cows and 1,460,015 other cattle. During the year 1912, 849,140 cattle were marketed for \$40,474,841. For dairy cattle the Holstein, Ayrshire and Jersey are the favorites, yielding about one-third more milk than the corresponding grades. In Eastern Ontario a cow produces 24,000 lbs. of milk a year. The Shorthorn has its champions especially as a dual purpose cow. For beef cattle the Shorthorn, Hereford, Polled Angus and the Galloway are most popular. There is a large export trade with the North-West. Large shipments are made from Toronto to Great Britain. The remission of the duty upon cattle exported to the United States has resulted in large purchases of Canadian animals by U.S. buyers. The consequent depletion of promising young stock is regarded with apprehension.

HORSES. Ontario is the leading province for the breeding of horses. Numbers are shipped from the province in every direction every week. Heavy draft horses, 1,600 lbs. upwards, bring from \$325 to \$350; the agricultural horse, 1,300 lbs. to 1,500, from \$225 to \$275; the general purpose horse, 1,175 lbs. to 1,350 lbs., from \$250 to \$300; the carriage horse brings from \$200 to \$500. Motor cars notwithstanding, the demand is good.

SHEEP. The climate and soil conditions of Ontario are particularly adapted to sheep raising. This has been demonstrated by Ontario breeders winning a large number of the prizes at the large American Expositions, such as the World's Fair at Chicago, the Pan-American at Buffalo, the Exposition at St. Louis, and the annual International Show at Chicago. According to the returns for 1913 there were 705,848 sheep and lambs in the province. Of pure-bred sheep there are about 20,000 head in the province of the following breeds: Shropshire, Leicester, Oxford, Lincoln, Cotswold, Southdown, Dorset, Hampshire and Suffolk. On 14th Oct., 1912, good quality of mutton was selling on the Toronto market for from \$7.00 to \$9.00 per hundred weight, and spring lamb for from \$10.00 to \$11.00 per head. At the same time washed wool was quoted at 20c. per pound. The home consumption of mutton and lambs has greatly increased during the last few years. The American cities afford a profitable market for the surplus stock, especially if the animals are of high quality. The abolition of the duty on wool by the new U.S. Tariff Act will give an impetus to sheep breeding.

SWINE. There is a growing Canadian demand for hams and bacon, which, with the present export trade, will for the

next few years easily absorb any increase there will be of live hogs in the province. For the production of bacon the Yorkshire hog is considered best, though the Tamworth and Berkshire are also suitable. Pork factories are established at Toronto, Hamilton, Ingersoll, Stratford, Peterboro and Ottawa. From $1\frac{1}{2}$ to 2 million hogs are annually slaughtered in the province. The sales of hogs from the Ontario farms increased from \$10,080,000 in 1897 to \$26,656,149 in 1912. The lumber companies use a large quantity of mess or fat pork, which is largely exported from the United States.

MAPLE SUGAR AND SYRUP. The average annual sugar output of Canada was about 19,600,000 lbs. during the decade 1901-1911; of this, Ontario contributed 5,000,000 lbs. The average selling price has been about 10 cents per lb. Canada supplies three-sevenths of the world's output. The trees are generally tapped in the latter part of March and April. Moderately warm days followed by freezing nights are ideal conditions to promote flow. Seasons vary, but the cost of fitting up a modern sugar camp is a paying investment even at low market prices. For some time past the trade has been seriously interfered with by adulterated imitations. For instructions, etc., write for Bulletin No. 1 B. to the Department of Agriculture, Ottawa.

POULTRY. The farmers of the province are each year realizing more and more the large profits that may be made from a flock of poultry. In 1912, 5,501,913 birds were marketed for \$3,208,860. A large number of poultry associations have been organized throughout the province for the purpose of raising the standard of poultry breeding. Ontario breeders have for many years been winning a large number of the principal prizes at the leading American Shows. At the Provincial Winter Fair held at Guelph, Ontario, each December, there is one of the greatest annual poultry shows on the continent. Last year there were over 5,000 entries. Large quantities of poultry and eggs are shipped to the markets of Great Britain. Egg circles have been established in some districts for the stimulation of production and efficient handling. By this means the farmer has been enabled to secure from 2c. to 6c. per dozen more for his eggs.

ROOTS AND VEGETABLES. About 350,000 acres are devoted to root crops. The production of early vegetables under glass is increasing, especially near Toronto, Hamilton and in Essex County. Large tracts of market lands

near the large cities have been taken up lately for city lots and the present growers cannot fill the demand.

ONIONS. The total acreage planted is about 700 acres. Average yield about 312 bushels per acre, chiefly the yellow variety. Importations from Egypt, Bermuda and Spain are large. From the U.S. about 78,000 bushels are imported annually over export trade. Write for Bulletin 199, to Department of Agriculture, Toronto.

POTATOES. The best potato growers average over \$100 per acre. Toronto alone consumes over 3,000 90-lb. bags per day; and other cities in proportion. About 80% of Toronto's potato supply comes from New Brunswick. An average crop is 200 bushels per acre.

SUGAR BEETS. The Dominion Sugar Co. owns the factories at Wallaceburg and Berlin, the only factories in Ontario. The farmer's net profits per acre are estimated at from \$35 to \$100 in exceptional cases. No crop so effectually cleans the land or so well fits it for barley, oats or wheat. The best pulp is carted back to the farm for the feeding of stock. Total acreage planted to beets in 1912 was 21,054 acres. Total yield, 7,819,066 bushels; average, 371 per acre. Write for Bulletin to Census and Statistics Branch, Department of Agriculture, Ottawa.

TOMATOES. Average yield is 250 bushels per acre. As high as 500 bushels has been reached.

CELERY. The demand is practically unlimited.

OTHER VEGETABLES AND ROOTS. Asparagus, cauliflower, peas, and rhubarb find a ready market in the canning factories. Cabbage average ten tons per acre, cucumbers (small), 5 tons; mangels, 432 bushels; carrots, 254 bushels; turnips, 394 bushels.

TOBACCO. The growing of tobacco in Ontario is chiefly localized in the counties of Essex and Kent, which produced in 1913 about 7 million lbs. It is also grown in Lambton and Prince Edward counties. The Burley variety predominates, which is suitable for the manufacture of chewing tobacco, and requires for curing the long summer and good fall found in Southern Ontario. Other varieties grown to a limited extent are the General Grant, Connecticut Seed Leaf and the Zimmer-Spanish, a few varieties of Havana Seed Leaf and the Brazilian variety. The yield per acre varies from 100 lbs. to one ton, safely averaging 1,200 lbs. Average price of products, 7 to 8 cents per pound. In 1910 prices ranged as high as 15 to 16 cents per pound. Cost of cultivation, including labor of grower, is estimated at \$50 per acre. Profits range from \$50 to \$75 an acre.

AGRICULTURE

11

WINE. It is estimated one-third of annual vintage is manufactured into wine. Approximate annual output, 275,000 gals. Chief varieties made: Dry Catawba, Sweet Catawba (a communion wine), Isabella, St. Augustine, Port, Sherry, Claret, Golden Diana, Rhine Wines, Champagne. Chief manufactures: T. G. Bright & Co., Niagara Falls; Pelee Island Wine Co., Brantford; Hillrust Wine Mfg. Co., St. Catharines; Ontario Wine Co., St. Catharines; St. David's Wine Growers Co., Toronto; Niagara Falls Wine Co., Niagara Falls; S. Allen, Norwich; G. Girardot Wine Co., Sandwich; M. Guindon, Sandwich; La Compagnie Robinet Frères, Sandwich; A. Tournier, Sandwich; Marsh & Co., Sandwich. Market chiefly in Canada.

NOTE

NEW ONTARIO. The agricultural conditions in the Northern part of the province must be considered separately. Write to the Director of Colonization, Parliament Buildings, Toronto, or to the Ontario Government Agent, 163 Strand, London, W.C., England, for the New Ontario Edition of Heaton's Provincial Booklet Series. For general description of New Ontario see page 81.

Mining

MINERAL PRODUCTION. The annual Mineral Production of the Province of Ontario, for the past ten years as published by the Bureau of Mines, Ontario, is as follows:

1903.....	\$12,870,593	1909.....	\$32,981,375
1904.....	11,572,647	1910.....	39,313,895
1905.....	17,854,296	1911.....	41,976,797
1906.....	22,388,383	1912.....	47,607,063
1907.....	25,019,373	1913.....	53,331,647
1908.....	25,637,617		

Write for Bulletin, giving latest statistics of production, to Deputy Minister of Mines, Toronto.

PROSPECTING. There are tempting opportunities for acquiring wealth in the mineral lands situated in the eastern, northern and northwestern districts of Ontario. Discoveries are constantly being made of iron, nickel, cobalt, copper, silver, gold, and many other valuable substances, both metallic and non-metallic. The latest discoveries are of gold in the Porcupine and Kirkland districts. The mining laws require a prospector to take out a miner's license, the cost of which is \$5.00, which entitles him to stake out three mining claims of 40 acres each in every mining division. Usually two or more prospectors travel together. A birch-bark canoe costs from \$10 to \$20; a tent \$6 to \$8; cooking utensils, \$5; and blankets, \$4 to \$5 a pair. Provisions, such as flour, pork, tea, rice, etc., would cost about 35c. a day for each person. For mining laws, maps, reports, etc., apply to the Minister of Mines, Ontario.

ARSENIC. Refined arsenic is produced at the works of the Deloro Mining and Reduction Co., Deloro, and the Coniagas Reduction Co., Thorold, from the silver-cobalt ores of the Cobalt district. Arsenical ore is also found in the County of Hastings and the Temagami district.

CEMENT. The demand for Portland Cement is rapidly increasing. Beginning in 1891, the production has increased from 2,033 barrels, valued at \$5,082, to 3,802,321 barrels in 1913, worth \$4,105,455, with average cost of barrel at \$1.08 in 1913. Hitherto, marl has generally been used as one of the ingredients, but solid limestone of suitable composition is now taking its place. Write for Bulletin on Cement to Dept. Mines, Ottawa.

CLAY. All the decorative brick, terra cotta, roofing, tile, and sewer pipe made in the province, is from the

Hudson River, Medina and other Devonian shales, which occur about Toronto, Hamilton, Beamsville, Milton, Brampton and Thedford. The Erie Clay, which is widespread, yields a good class of white brick. An upper weathered band of this clay makes good red brick. Brick-making clays are abundant throughout the province. Write Deputy Minister of Mines, Toronto for Report on Clays and the Clay Industry of Ontario.

COBALT. The mineral occurs abundantly in the silver ores of Coleman Township (see under Silver). The chief use of cobalt is in the form of the oxide to produce the beautiful color known as cobalt blue. The Deloro Mining and Reduction Co., Deloro; and the Coniagas Reduction Co., Thorold, both manufacture, among other articles, cobalt oxide. The mines of the Cobalt district are now the chief source of the world's supply of cobalt.

COPPER. The principal source is the nickel copper mines (see under Nickel), but the sulphide deposits on the north shore of Lake Huron, which do not carry nickel, are of potential importance.

CORUNDUM. Ontario has large deposits of corundum. The mineral is found in Renfrew and Hastings Counties. The Manufacturers' Corundum Company at Craigmont works these deposits. Write for Geological Reports to Deputy Minister of Mines, Toronto.

FELDSPAR. Quarries in Frontenac County are operated by Messrs. J. Richardson & Sons, Kingston, and McDonald Feldspar Company. The product is shipped to New Jersey and Ohio factories, for making enamelled ware. Total output in 1913 was 18,615 tons, valued at \$67,142.

GOLD. The mines of the Porcupine district are now turning out gold, the yield of which in Ontario was formerly negligible. In 1913 the output was 220,837 ounces, worth \$4,558,518, the greater part of which came from two mines at Porcupine, the Hollinger and Dome. Stamp mills on other properties there have been put in operation. Rich ore has recently been found at Kirkland Lake, and shipments in bags have been made, bringing a return of \$462 per ton. Larder Lake, Swastika, Munro, West Shining Tree, Long Lake, and other camps in Northeastern Ontario are being prospected with fair promise of reward. There is also gold on Lake of the Woods, Seine River, Manitou Lake, Sturgeon Lake, and at many other points in the northwestern parts of the province.

GRANITE. In Hastings Co., near Bancroft, there are extensive beds of granite or gneiss, and dolomitic limestone of various tints, also a deep blue sodalite, suitable for inside decorative work. There are numerous occurrences of granite in the northern and eastern districts. See under Sodalite.

GRAPHITE. Operating companies are the Black Donald Graphite Mine near Calabogie, and the Globe Refining Co. in North Elmsley Township. Write Dept. Mines, Ottawa, for Report on Graphite by F. Cirkel.

GYPSUM. The principal deposits are along the Grand River, from which, in 1913, 40,581 tons of crude gypsum were mined. The Alabastine Co., of Paris, manufactures wall plasters, alabastine, and a variety of commodities. There are extensive beds on the James Bay slope, but as yet these are inaccessible.

IRON. The output of iron ore in 1913 was 195,937 tons, valued at mine at \$424,072. The bulk was hematite from the Helen Mine in Michipicoten, the remainder magnetite and siderite from Moose Mountain and other deposits in Northern and Eastern Ontario. Iron ore is found in Wisner Township, north of Sudbury; at Burwash Lake, in Temagami Reserve, and east of Lake Nepigon and other localities. Write for Special Report, to Dept. Mines, Ottawa.

IRON PYRITES. In 1913 the output was 71,620 tons, worth \$171,687. Sulphur is dissociated from the iron by roasting and used in manufacture of sulphuric acid. See under Sulphur. Write for Report on Pyrites to Dept. Mines, Ottawa.

MARBLE. White crystalline limestone and variegated marbles, near Bancroft, are worked by the Ontario Marble Quarries Co., Ltd. Marble for the Parliament Buildings, Ottawa, was obtained from near Arnprior. Deposits are also being worked in Lanark County.

MICA. The production is principally in the hands of large operators, of which the General Electric Co., controlling the Loughborough Mining Co., is chief. They produce large quantities from the mines near Sydenham and Perth. The return for output 1913, chiefly of amber variety, was 386 tons rough cobbled mica, worth \$55,264. Canadian mica has a good reputation for flexibility, freedom from stains, etc. Export trade chiefly with U.S. and Great Britain. In Europe, Indian mica is a strong competitor. Write to Dept. Mines, Ottawa, for Special Report, "Mica, Its Uses, Occurrences, etc."

NATURAL GAS. In Haldimand Co., gas is piped from a large number of wells to Hamilton, Dundas, Brantford, Galt, Paris, and a number of other places. Welland County continues to produce much gas, supplying Welland and several towns and villages. Kent County supplies gas to Leamington, Chatham and other places, from the Tilbury, Windsor, Walkerville and Romney fields. The output in 1913 was valued at \$2,460,337.

NICKEL. Seventy per cent. of the world's output comes from the Sudbury district. Here ore is mined and treated by the Canadian Copper Co. and the Mond Nickel Co. It is first roasted in open air heaps to expel sulphur, then smelted into matte of nickel and copper, which is shipped, for final separation of the metals, by the Canadian Copper Co. to Constable Hook, N.J., and by the Mond Nickel Co. to Clydach, Wales. The Alexo Mine is being worked in Dundonald Township, on the T. & N.O. Ry. The ore is a pyrrhotite similar to that of the Sudbury region and is being treated by the Mond Nickel Company at Victoria Mines. Returns of the industry for 1913 show: Ore smelted, 823,403 tons; Bessemer matte produced, 47,150 tons; nickel contents, 24,838 tons; value, \$5,237,477. Copper contents, 12,941 tons; value, \$1,840,492. Write for Report on Nickel Fields of Sudbury, with Geological Maps, to Deputy Minister of Mines, Toronto.

PEAT FUEL. The Dominion Government for a time operated an experimental plant at Alfred, Prescott Co., which is now being worked by private parties. The Dorchester Peat Fuel Co. operate a plant near London. Write for Report on Utilization of Peat Fuel to Dept. Mines, Ottawa.

PETROLEUM. The oil fields of Petrolia, Oil Springs and Tilbury East continue to produce, but at a diminishing rate. The demand for oil and oil products requires the importation of much more crude than is produced in the province. Returns for 1913 show crude oil produced, 7,915,761 imp. gals.; value, \$398,051.

PLATINUM AND PALLADIUM. These metals are found associated with the chalcopyrite in the nickel-copper ores of the Sudbury district. In refining matte from these mines there were recovered in U.S. works during the six years from 1907 to 1912, inclusive, 2,864 ounces of platinum and 4,896 ounces of palladium. The latter is a silvery-white metal of the platinum group, which finds its chief use in the manufacture of astronomical instruments, watch-making and dental work.



The Abolition of the Duty on Wool by the new U. S. Tariff will give an Impetus to Sheep Raising. See page 8.

QUARTZ. The Canadian Copper Co. and other mining concerns, in 1913, raised 54,320 tons, valued at \$130,860, principally for flux and converter linings.

SALT. The evaporating process is responsible for the total output of salt. The bulk comes from the wells of the Canadian Salt Company at Windsor. Other companies operate at Exeter, Goderich, Clinton, Wingham, Sarnia, Kincardine and Park Hill. The salt area extends through the counties of Middlesex, Huron, Bruce and Lambton. In 1913, output was 96,799 tons, worth \$474,372. At present no rock salt is mined. A boring was made at the mouth of the Maitland River, at Goderich, by the late H. Y. Attrill, of 1,517 feet, in which six beds were passed through, with a total depth of 112 feet. The following analysis was made of the second bed, 25 feet thick, at a depth of 1,085 feet, by Mr. Sterry Hunt, LL.D., F.R.S.: Chloride of sodium, 99.687; Chloride of calcium, .032; chloride of magnesium, .095; sulphate of lime, .090; insoluble in water, .077; moisture, .079. This is said to be the purest salt in the world. See Report of Sterry Hunt in Vol. V, Proceedings of American Institute of Mining Engineers.

SILVER. The discovery of high-grade silver ores in the Cobalt District was made in 1903. Ores carry up to 3,000 and 4,000 ozs. of silver to the ton of 2,000 lbs. Some of the consignments have gone much higher. Carload lots of 30 tons have brought \$60,000, \$90,000 and \$110,000. A typical analysis gives silver 11%, cobalt 11%, nickel 4%, arsenic 44%. Shipments of ore from the Cobalt camp were 158 tons, value \$136,217, in 1904; 2,144 tons, value \$1,473,196, in 1905; 5,335 tons, value \$3,764,113, in 1906; 14,788 tons, value \$6,301,095, in 1907; 25,624 tons, value \$9,284,869, in 1908; 30,740 tons, value \$12,464,722, in 1909; and 34,282 tons (including concentrates), value \$15,478,047, in 1910. The shipments in 1911 (including bullion) contained 31,507,880 ounces of silver; in 1912, 30,322,805 ounces, value \$17,455,080, and in 1913, 29,681,795 ounces, worth \$16,555,001. Valuable discoveries have been made on the Montreal River, at Miller and Gowganda Lakes, and south of Lorraine Township, where mines have been opened. Similar ores are also found on the north-west shore of Lake Superior. The intervening district offers many possibilities to prospectors. Write Deputy Minister of Mines, Toronto, for Report on Cobalt Silver District, with Geological Maps.

SODALITE. The Princess Quarries Co., near Bancroft, Hastings Co., quarry a stone of a beautiful blue color, highly esteemed for decorative work.

SULPHUR. Sulphur is found as a redundant ingredient of the nickel ores of Sudbury district. It occurs abundantly in the form of iron pyrites, and as such can be roasted by one of the processes employed in the manufacture of sulphuric acid. (See under Iron pyrites). The Nichols Chemical Co., of Canada, at Sulphide, manufacture sulphuric, nitric and mixed acids, using 5 carloads of pyrites a day. A large deposit of pyrite is being worked by the Northern Pyrites Co., near Lake Minnetakie, on the National Transcontinental Ry. For the opportunities for expansion of this industry in Canada, see Report Ontario Bureau of Mines, 1907.

TALC. Talc of first-rate quality is found near Madoc, where it is ground and exported in considerable quantities to the United States and Europe, for paper-making, cosmetics, etc. There were shipped, in 1913, 20,738 tons ground talc, value \$125,340.

ZINC. The Olden Mine, in Hastings County, raises a small quantity of ore yearly. There are unworked deposits on the main line of the Canadian Pacific Railway and elsewhere.

Boards of Trade Register

When Writing to a Local Reference, Mention Should
be Made of Heaton's Annual

This Register is revised every year and includes certified official returns from local Boards of Trade and the municipal authorities of towns where no Board of Trade is established. Information is given generally as received. The Editors reserve the right to use information obtained from other reliable resources and to edit the returns made, but they cannot, for obvious reasons, from their own knowledge, vouch for the absolute accuracy of every detail in each case. As a general rule, entries in this register are confined to towns over 1,200 population in the East. Exceptions are made in special cases. Where possible, a reliable local reference is given, who will supply further information upon request.

ABBREVIATIONS.—m., miles: Pop.,* Population according to Returns of Census, 1911; Pop., estimate of Mayor or local Board of Trade. Alt., Altitude—ft. above the sea level. Altitudes are given as furnished by the Dominion Meteorological Office at Toronto.

POPULATION STATISTICS.—The rapid settlement of the country makes it extremely difficult to give accurate population statistics. As a rule the figures are taken from local estimates, based on Assessment Returns or a Special Civic Census.

Chief Town of County Judicial District marked †

Towns represented among Illus. Advertisements marked ‡

ACTON (Halton Co.), 35 miles w. of Toronto, on G.T.R. Hotels, Dominion, Station. 5 churches, public and high schools, park, bank, Industries, 2 large tanneries, belt-ing, gloves. Hydro-electric power. Alt. 1,198. Pop. 2,200.

NOTE.—C.N.R. under construction.

SPECIAL OPPORTUNITIES.—Cheap elec. power. Good sites with railway trackage. Liberal inducements on application. Write Sec. Bd. Trade.

† **ALEXANDRIA** (Glengarry Co.), on G.T.R. (C.P.R. at Green Valley Sta., 3 miles). Hotels, Ottawa, Grand Union \$2. County Registry Office, 2 banks. Water-works and electric light. Neighborhood supplies hard-wood. Centre of fine dairy district. Alt. 256. Pop. *2,318.

SPECIAL OPPORTUNITIES.—Manufactures requiring hardwoods; foundry, land surveyor, feed store, baker and confectioner, hatcher, first-class hotel. Exemption from taxes and other privileges to new industries according to payroll. Write the Mayor.

ALLANDALE (Simcoe Co.), on Kempenfeldt Bay, 63 miles n. of Toronto, now part of Barrie. 3 churches, 1 hank. Industries, saw mill, carriages, excelsior, G.T.R. shops. Hydro-electric power. Alt. 737. Pop. *1,500.

ALLISTON (Simcoe Co.), on G.T.R., C.P.R., 49 miles n.w. of Toronto. Hotels, Windsor, Dominion. 4 churches, 2 chartered hanks, 1 private. Industries, "silent salesman" factory, jewellery and silver-plate. Alt. 723. Pop. 1,500.

SPECIAL OPPORTUNITIES.—Nursery garden. To manufacturers town offers free sites, free water, and fixed assessment. Write Pres. Bd. Trade.

ALMONTE (Lanark Co.), on Mississippi River, 30 miles w. of Ottawa, on C.P.R. Hotels, Davis, Belmont. 5 churches, town hall, 2 hanks. Town owns elec. light system. Water power, 3,500 h.p. available. Industries include woollen, shoddy and knitting mills, soap works. Alt. 399. Pop. 2,500.

SPECIAL OPPORTUNITIES.—Foundry, textile factory. Inducements on application. Write Chairman Publicity Committee.

AMHERSTBURG (Essex Co.) on M.C.R., at head of Lake Erie, on Detroit River. D.B.I. ferries to Detroit, 18 miles. Am. Ex. Hotels, Amherst, Lakeview, Union. Auto factory, knitting factory. Limestone quarries in neighborhood. Alt. 593. Pop. *2,560.

SPECIAL OPPORTUNITIES.—Lumber and planing mill, dentist, manufactures of all kinds. Reasonable encouragement offered to new industries. Write Town Clerk.

ARNPRIOR (Renfrew Co.), on C.P.R., G.T.R., 37 miles w. of Ottawa, at confluence of the Madawaska and Ottawa Rivers. Hotels, Campbell, McPhee. Industries, 2 cheese factories, bricks and tiles, woollen mill, 2 lumber mills, builders' factory, 2 planing mills, mineral water factory. Electric power. Good bass fishing on river known as Lac des Chats. Alt. 301. Pop. *4,395.

AURORA (York Co.), 20 miles n. of Toronto, on G.T.R. and Toronto and York Radial Ry., connecting with C.N.R. Hotels, Queen's \$2, Royal, Wellington. 5 churches, public and high schools, hanks, 2 chartered, 1 private. Town owns elec. light and water systems.

Power from Niagara. Industries, planing mill, flour mill, tannery, boots and shoes (2), pulleys and clutches, agricultural implements, office furniture. Alt. 886. Pop. 2,500.

SPECIAL OPPORTUNITIES.—Cheap power. Good labor conditions. Liberal inducements to good firms. Write Sec. Bd. Trade.

AYLMER (Elgin Co.), 25 miles from London, on G.T.R., Wabash, M.C.R. Hotels, Brown, Mansion, Central. 6 churches, public school, collegiate institute. Neighborhood supplies timber, tile clay and fish. Elec. power owned by town. Good dairy country. 2 hanks. Industries include canning factory, foundry, saw mills, hoops and staves, leather specialties, brick and tiles, butter and cheese, 3 builders' factories, flour mill, grist mill, condensed milk, shoes, pumps and scales, 3 machine shops. Alt. 2,300. Pop. 2,350.

SPECIAL OPPORTUNITIES.—Shoe factories, pork factories, cheese factories, creameries, woodenware, canning and evaporating plants. Liberal inducements offered in taxation, water, light, etc. Natural gas, 10c. to factories, 23½c. to consumers. Write Sec. Bd. Trade.

BARRIE (Simcoe Co.), on n. side of Kempenfeldt Bay, Lake Simcoe, county town, on G.T.R. Steamboats to Orillia, Jackson's Point, etc. Hotels, Queen's, Barrie, Simcoe. 4 public schools, 1 separate school, 11 churches, public library, 2 parks, 1 loan and savings co., 5 chartered banks, 1 private bank. Industries, 2 breweries, 2 builders' factories, tannery, 3 machine shops and hoiler works, bricks, carriages, flour mill, gas producers and gas engines, wicker works, shingle mill, clothing, boots and shoes, excelsior. Cheap hydro-power. Surrounded by rich mixed farming and dairying district. Splendid summer resort. Sailing, boating, canoeing, bathing, etc. Alt. 726. Pop. 6,800.

SPECIAL OPPORTUNITIES.—First-class summer hotel, hoot and shoe factory, clothing, whitewear, furniture, woodenware, woollen mill. To bona-fide industries town offers free sites, free water and fixed assessment. Other liberal inducements on application. Write Sec. Bd. Trade.

BELLEVILLE (Hastings Co.), on Moira River, on n. shore of Bay of Quinte, Lake Ontario, on G.T.R., C.N.R. and C.P.R., on line of R. & O., Lake Ontario Nav. Co. and other lake S.S. Hotels, Quinte \$2.50 up, Anglo-American \$1.50 and others. 10 churches, high school and 6 others, business college, ladies' school. \$100,000 spent

DESCRIPTIONS OF TOWNS

on schools in 1912. Public library, armories, 2 parks, 7 hanks. City owns gas and water works. Elec. light and power by private co. Industries, 40, include cement works, locks and hardware specialties (2), nuts, bolts and horseshoes, canning, mining and hoisting machinery, foundry and boiler works (2), flour mills, stoneware, pottery, corsets, distilleries, shingle machines, soda water shirts, furniture, paper, vinegar and jams. Alt. 251. Pop. 11,893.

SPECIAL OPPORTUNITIES.—Smelter, concentrated milk products, rubber tyres for commercial trucks. City offers to manufacturers free site and fixed assessment for ten years. Cheap power, \$18 to \$20 per h.p. for 24-hour service. Good labor conditions, cheap living. Write Sec. Bd. Trade.

BERLIN (Waterloo Co.), on G.T.R., 60 miles w. of Toronto, 35 miles from Hamilton. Elec. Ry. (freight and passenger) connects with C.P.R. at Galt (12 miles). Hotels, Walper, American, Bowman, Brunswick. 17 churches, 5 public schools, collegiate institute, R.C. college, library, hospital, court house, golf and country club, large park and ball grounds, 8 hanks. City owns and operates street ry., water, sewerage, elec. light and gas. Industries, over 125 factories, chiefly furniture, rubber goods, shirts and whitewear, leather tanneries, 6 wholesale houses. An excellent agricultural district. Alt. 1,100. Pop. 18,000.

NOTE.—Connection with C.N.R. expected.

SPECIAL OPPORTUNITIES.—All industries employing male labor. Steady demand for all kinds of skilled mechanics. No labor troubles. Liberal inducements on application. Cheap hydro-electric power. Write Sec. Bd. Trade.

BLENHEIM (Kent Co.), on Pere Marquette Ry. Hotels, Erie House and 2 others. 1 public school, 7 churches, 2 hanks. Industries, flour mill, evaporator, bricks and tiles, 5 builders' factories. Alt. 681. Pop. *1,386. Write the Mayor.

BLIND RIVER (Algoma Dist.), on Lake Huron and Blind River, 80 miles w. of Sudbury, 70 miles e. of Sault Ste. Marie, on C.P.R., Dominion Transportation and Northern Nav. Co.'s steamers. Hotels, Grandview, American, Blind River. 5 churches (Ang., Bapt., Pres., Meth., R.C.), public and separate schools. Electric light, elec. power, 1,000 h.p. available. Abundant water power. Bank, saw mill, machine shop, 2 box factories. Deposits of copper.

silver, gold and iron. Neighborhood supplies various kinds of lumber. Good scenery, fishing and big game hunting. Alt. 603. Pop. 2,500.

SPECIAL OPPORTUNITIES.—Any kind of hardwood industry, tannery, furniture factory. To new industries town offers free site and fixed assessment. Write Sec. Bd. Trade.

BOBCAYGEON (on 2 islands between Pigeon Lake and Sturgeon Lake, in Victoria Co.), on C.P.R. Hotels, Rockland, Iroquois. 4 churches, 2 public schools, bank. Town owns elec. light system. Seat of Hillcroft School for small boys, Principal, W. T. Comber, B.A., Wadham College, Oxon. 2 trains and week-end special to and from Toronto, 85 miles. Industries, large flour mill, 2 lumber mills, planing mill. Centre of summer tourist district. Alt. 854 (250 ft. higher than Georgian Bay). Pop. *1,002

SPECIAL OPPORTUNITIES.—Power, 500 h.p. available. First-class summer hotel. Good fishing and boating, butcher. Write Sec. Bd. Trade.

BOWMANVILLE (Durham Co.), on Lake Ontario, 42 miles e. of Toronto. On main lines of G.T.R., C.P.R., C.N.R. Terminus of Toronto and Eastern Elec. Ry. Hotels, Bowman, Balmoral \$2. 5 churches, 2 public schools, 1 high school, 3 banks. Industries include Good-year Tire and Rubber Co. (750 hands), Dominion Piano and Organ Co. (200 hands), Bowmanville Foundry Co. (100 hands), glove factory, canning works, barley mill, flour mill, 2 cooperages. Fine natural harbor capable of accommodating largest lake vessels. The centre of a very rich apple-growing, mixed farming and dairying district. Splendid summer resort. Good boating of all kinds on lake and in harbor and lagoon, extending $\frac{3}{4}$ -mile inland. Good bathing. Safe, sandy beach. Many fishing streams in vicinity. Alt. 150. Pop. 4,000.

NOTE.—Water and sewerage system and armories to be completed in 1914.

SPECIAL OPPORTUNITIES.—Automobile factory, brick yard, saw mill, contractors, real estate. Abundant elec. power available, at \$12 to \$25 per h.p. Labor conditions excellent, low cost of living, cheap rents. Town offers liberal concessions to new industries. Write Sec. Bd. Trade.

BRACEBRIDGE (Muskoka District), on Muskoka River, 120 miles n. of Toronto, on G.T.R., daily boats from Gravenhurst in summer. Hotels, Queen's, Albion, British Lion, Dominion. Court house, library, 2 parks, 2

banks. Town owns light and water systems. Industries include tanneries (2), woollen mills, launches, sashes and doors (2), foundry, lumber mills. District supplies tanbark and all kinds of wood. Alt. 817. Pop. 3,000.

SPECIAL OPPORTUNITIES.—Boot factory, cloth factory, (vacant factory building for sale suitable for either of these), furniture. Cheap elec. power. Town offers tax exemptions, and in some cases free sites. Write Town Clerk.

¶ **BRAMPTON** (Peel Co.), 21 miles w. of Toronto, on G.T.R. and C.P.R. Hotels, Victoria, Queen's. 6 churches, high and public schools, public library, park, 3 banks. Town owns electric light, waterworks and sewerage. Hydro-electric power. All main streets paved with asphalt block. Industries include 4 cut-flower-growing concerns—one covering 24 acres and employing 250 hands, boots and shoes (3), paper boxes, hosiery, loose leaf factory (largest in Canada), knitted goods, Pease Foundry Co. (furnaces), 2 planing mills, 2 flour mills, gummed paper, pressed brick. Neighborhood supplies brick clay and sand. The centre of a rich dairying and apple-growing district. Large horse, cattle and hog centre. Alt. 712. Pop. 4,000.

NOTE.—Electric Ry. to Toronto under construction.

SPECIAL OPPORTUNITIES.—Steel store front foundry, automobiles, automobile tops and tires, bricks and tiles, boots and shoes, chairs, carriages, leather and woodworking industries, textiles, cigars. To manufacturers excellent shipping facilities. Town offers cheap water and power, tax exemptions and other liberal inducements on application. Write Sec. Bd. Trade.

¶ **BRANTFORD** (Brant Co.), on Grand River, 70 miles s.w. of Toronto, 80 miles w. of Buffalo, N.Y. On G.T.R. main line and 2 branches; T.H. & B.R., connecting with C.P.R. and Mich. Cent. Ry.; L. Erie & N.R., operating with C.P.R. at Galt, Lakeport and Pt. Dover. Elec. rys. to Hamilton (20 miles), Paris and Galt. Hotels, Kerby, Bodega, Belmont. County seat. 26 churches, 7 public schools, 2 separate, collegiate institute, blind school, Indian Institute, \$160,000 Y.M.C.A. bldg., large parks, 11 banks. City owns hydro-electric system, water and sewerage works. 20,000 h.p. elec. power available at \$15 to \$28 per h.p. Nat. gas by private co. Industries, over 80 factories, including iron and wooden industries, clothing, clay and cement products, automobiles, electrical fittings, etc., etc., 22 wholesale houses. Centre of a mixed farming district. Neighborhood supplies shale, brick clay and sand. Social, golf and country clubs. Alt. 691. Pop., including immediate suburbs, 30,000.

SPECIAL OPPORTUNITIES.—Industries making goods to sell direct to consumer. Steady demand for mechanics, expert machinists, builders, domestic servants and laborers. Cheap elec. power. Special industrial water rate. Fixed tax rate for 10 years. Some free sites available. N. labor troubles. Write Pres. Bd. Trade or Sec. Greater Brantford Bd.

BRIDGEBURG (Welland Co.), on Niagara River, opposite Buffalo, N.Y.; on C.P.R., G.T.R., Mich. Central Ry., Pennsylvania R.R., Père Marquette, Wabash and N.Y. Central Rys. On route of all S.S. lines on Niagara River. Hotels, Spain's, Barnea, and 2 others. 4 churches (Epis., Meth., Pres., R.C.), park. Town owns water and sewerage system. Elec. Light Co., Gas Co. Abundant elec. power. Nat. gas at 30c. per M. 2 banks. Industries include foundry, steel works, telephone construction co., display fixtures, skirt supporters, stretchers, account registers, stoves, varnish, shaving powder, hot-air registers, patent medicines. A fruit growing district. Good scenery and fishing. Alt. 587. Pop. 1,800.

SPECIAL OPPORTUNITIES.—To new industries town offers tax exemptions. Cheap labor. Write Sec. Bd. Trade.

BRIGHTON (Northumberland Co.), on Presque Isle Bay, on Lake Ontario, 24 miles e. of Cohourg, 20 miles w. of Belleville; on C.N.R., G.T.R., C.P.R. Steamers of R. & O. Nav. Co. and Lake Ontario and Bay of Quinte S.S. Co. to Toronto, Montreal, Rochester and principal U.S. and Canadian ports. Fine natural harbor, with 18 ft. of water. Hotels, Central, Clarendon \$2, Presque Isle (summer only) \$1.50. 5 churches, big and public schools, town hall, elec. light. Town owns gravity waterworks system. Abundant electric power \$15 to \$20 per b.p. 2 banks. Industries include boats, canneries (3), sprays, foundry, machinery, evaporators (2), flour and feed mills (2), cooperage. Centre of an agricultural and fruit district. Neighborhood supplies pine, hemlock and spruce. Popular summer resort at Presque Isle Point, 3 miles across the bay, with good fishing, boating and bathing. Duck shooting in season. Alt. 303. Pop. 1,500.

NOTE.—New schools and large foundry under construction.

SPECIAL OPPORTUNITIES.—All industries, especially iron. Good shipping facilities. Cheap electric power. Town offers free factory sites on lines of three competitive railroads, tax exemption and other liberal inducements. Good living conditions. Steady supply of labor. Town is absolutely free of debt and has money to invest in new industries. Write G. Drewry, Sec. Bd. Trade.



The Value of Dairy Products in Ontario was Estimated at 40 Million Dollars in 1913. See page 3.

†BROCKVILLE (Leeds Co.), on St. Lawrence River, at eastern gateway to the Thousand Islands. On G.T.R., C.P.R., C.N.R. 74 miles from Ottawa, 125 miles from Montreal, 208 miles from Toronto. Nearest Canadian town to New York City. Ferry connection with N.Y.C.R. at Morristown, N.Y. All S.S. lines going east and west call. 2 public wharves, 20 feet of water. Hotels, Strathcona Hall, Revere \$2.50, Grand Central \$1.50. 14 churches, schools—5 public, 1 separate, 1 manual training, 1 domestic science, 1 collegiate institute, St. Alban's Boys' School, business college, county court house, public library, Ontario hospital for insane, 2 other hospitals, opera house, theatre. Headquarters Eastern Ontario Dairymen's Association. Commercial Travellers' Club (150 members), St. Lawrence Park, Victoria Park, Fulford Athletic Grounds. Gas, electric light, power, water and sewerage systems, municipally owned. 6 banks. Industries include stoves and hardware, carriages, gloves and suspenders, agricultural implements, hats, biscuits confectionery, engines, motor boats, 2 lumber companies, mineral waters, cigars, etc. Local steamer plies several times daily to summer resorts on St. Lawrence River, where fishing, (maskinonge, bass, pike, etc.) is good. Bass and salmon trout fishing at Lakes Rideau, Charleston, Beverley, 2 hours by C.N.R. Pop. 10,000.

SPECIAL OPPORTUNITIES.—To new industries town offers liberal inducements. Any quantity electric power at reasonable rates. See illus. Advt. Write Sec. Bd. Trade or Town Clerk.

BURLINGTON (Halton Co.), at head of Lake Ontario, 30 miles w. of Toronto, on G.T.R., C.P.R. (freight only), electric ry. to Hamilton, 10 miles w.; Oakville, 12 miles e. Hotels, Brant, Queen's, Raymond. 5 churches, high and public schools, park. Waterworks and electric light. 2 banks. Industries include cannery, 2 basket factories, chemical works, 2 planing mills, evaporator. A rich fruit-growing district. Alt. 281. Pop. 2,100.

SPECIAL OPPORTUNITIES.—Industries of all kinds. Abundant elec. power. Inducements on application. Write Clerk of the Municipality.

CAMPBELLFORD (Northumberland Co.), 32 miles w. of Belleville, on G.T.R. and Trent Valley Canal. Hotels, Windsor, St. Lawrence. 5 churches, public and high schools, library, 2 banks. Town owns elec. light and power, water and sewerage systems. Industries include bridge works, woollen mills, shoes, pulp and paper mills, flour mills, elec. power co., sashes and doors (2). Surrounded by rich fruit and mixed farming district. Alt. 596. Pop. 3,300.

SPECIAL OPPORTUNITIES.—Iron and wood industries. Abundant elec. power and water power available. Liberal inducements on application. Write F. E. Gaudrie, Publicity Commissioner and Sec. Bd. Trade.

CARLETON PLACE (Lanark Co.), on C.P.R., 27 miles from Ottawa. Hotels, Mississippi \$1.50, Queen's \$1.50. Industries include stoves, knotted goods, flour mills, lumber co., C.P.R. shops, employing 150 men. Good fishing and hunting. Alt. 447. Pop. 4,000.

SPECIAL OPPORTUNITIES.—Furniture factory, foundry, and machine shop, cigar factory, farm implements, woollen mill. Exemption from taxes and free sites offered to new industries. Write Sec. Bd. Trade.

CHARLTON (Temiskaming Dist.), on T. & N.O. Ry., 9 miles from Englehart. Small boat line on Long Lake. Hotel, \$2.00. 3 saw mills, Methodist church, public school, jail, electric power, 600 h.p. Pop. 500.

CHATHAM (Kent Co.), on Thames River, 45 miles e. of Detroit, Mich.; on G.T.R., C.P.R., Wahash, Pere Marquette and Mich. Central Rys. Elec. ry. to Wallaceburg, 18 miles, and Lake Erie, 14 miles. Deep water navigation gives communication with Great Lakes. Hotels, Garner, Sanita (mineral baths), Rankin, and others. Churches of all denominations. 3 large public schools, collegiate institute, Ursuline Convent boarding school, business college. City and county buildings, market hall, armories, 3 large parks. Hydro-electric light and power, unlimited quantity. Water and sewerage systems. Nat. gas, 12c. per 1,000 ft. for power; \$3.60 per h.p. per year of 300 days for 10-hour service; 25c. for domestic use. 2 daily papers, 4 theatres, 5 banks. Industries, about 40 factories, including pad and textile works, bricks and tiles, wheels, malleable steel, machine shops, carriages, flour mills, woollen mills, lumber mills, reinforced concrete, springs and axles, drop forgings, matches, auto-trucks, etc. Centre of a very rich mixed farming and fruit district. Numerous summer resorts with fine shooting, fishing, etc., easily reached by boat or elec. ry. Pop. 13,000.

SPECIAL OPPORTUNITIES.—Machine shop and foundry for sale. Cheap power. To new industries city offers free sites with railway siding connections. Good labor conditions. No unions or strikes. Other inducements on application. Write Chairman Industrial Committee, or Pres. Bd. Trade.

CHESLEY (Bruce Co.), on north branch of Saugeen River 122 miles n.w. from Toronto, on G.T.R. Hotels, Com-

mercial, McDonald. 8 churches, public and high school. 2 banks. Industries include saw mill, flour mill, woollen mill, 2 furniture factories, iron and brass bedsteads, bricks and tiles, chairs, mattresses, machine shop, butter factory. Alt. 980. Pop. 1,734.

SPECIAL OPPORTUNITIES.—Special lines of furniture, starch factory, shirt factory. Town offers tax exemptions, free sites. Write Town Clerk.

CLINTON (Huron Co.), 130 miles w. of Toronto, 50 miles n. of London, on G.T.R. Hotels, Rattenbury, Normandie. 8 churches, public and model schools, collegiate institute, town hall, library, park. Town owns light and water systems. Elec. power, 300 b.p. available, rate \$40. Industries, planing, flour and knitting mills, automobiles, pianos and organs, boys' clothing, salt. Good fishing and scenery. Alt. 582. Pop. 2,500.

SPECIAL OPPORTUNITIES.—Any industry, special inducements on application. Good labor conditions. Write Town Clerk or Pres. Bd. Trade.

COBALT, on Cobalt Lake, 330 miles n. of Toronto, on T. & N.O. Ry. Electric ry. to Halleybury, 5 miles; to New Liskeard, 10 miles. Hotel, Prospect. A mining camp. The richest silver district in the world. 6 churches, public and separate schools, 5 banks. Industries, machine shop and foundry, sampling plant, 13 concentrators. Available water power, 20,000 b.p.; 12,000 b.p. now developed. (See under Mining.) Pop. 5,630. Write Sec. Bd. Trade.

COBOURG (Northumberland Co.), on Lake Ontario, 73 miles e. of Toronto, on G.T.R., C.N.R. and C.P.R. Fine deep-water harbor. Steamship connections with Rochester, 70 miles; Toronto, 60 miles; Montreal, and principal U.S. and Canadian ports. Daily all-year ferry service to Rochester, carrying 28 loaded cars. Hotels, Dunham, British, and 5 others; Arlington, Columbian and Cedarmere (summer only). 6 churches, public and separate schools, magnificent town hall containing opera house, jail, house of refuge, Provincial asylum, 2 large parks, horse show grounds, 4 banks. Electric power (Seymour Power Co.). Electric light, water and sewerage systems. Industries include Crossen Car Works, John Dick Co. Woollen Mills, Cobourg Matting Factories (2), Provincial Steel Co., woodworking, wire fences, canning and smaller industries. Neighborhood supplies various kinds of lumber. Surrounded by very rich mixed farming, dairying and apple-growing district. Popular summer resort, fre-

quented by families from U.S.A. Good fishing and shooting at Rice Lake, 12 miles north. Good boating and golf links. Alt. 295. Pop. 5,800.

SPECIAL OPPORTUNITIES.—All industries. Summer cottages. Excellent shipping facilities, cheap electric power and cheap fuel (insured by ferry service to Rochester). Good factory sites on G.T.R., C.N.R., C.P.R. and lake front. Labor is cheap. Town offers liberal inducements on application. Write Sec. Bd. Trade.

COCHRANE (Temiskaming Dist.), 750 miles s.e. of Winnipeg, 550 miles w. of Quebec, 500 miles n. of Toronto. On National Transcontinental Ry. and northern terminus of T. & N.O. Ry. Hotels, King George, Cedric, Royal, Queen's and Grand Union. 4 churches, 2 schools, custom house. Electric light and power, water and sewerage system, local and long distance 'phones, 2 newspapers, 2 banks. Machine shops and roundhouses of both railways. Commercial centre for Northern Ontario and Northern Quebec. Tributary district includes Porcupine gold fields, nickel and iron mines, several large pulp and lumber mills. A rich agricultural country being rapidly opened up by Govt. roads. Outfitting point for prospecting, hunting, and fishing parties. Local guides obtainable. Pop. about 3,000.

SPECIAL OPPORTUNITIES.—Woodworking factories, brick plant, foundry and machine shop. Write Sec. Bd. Trade.

COLLINGWOOD (Simcoe Co.), port on Georgian Bay, on G.T.R. Direct S.S. communication with all Canadian and U.S. ports. 20 feet of water in harbor, one of the best protected in chain of lakes. Hotels, Globe, Arlington and 5 others. Town owns waterworks, electric light, sewerage and hydro-electric power. 4 public schools and 1 separate school, collegiate institute, Carnegie library, Y.M.C.A., 2 parks, armory, 2 skating and curling rinks, Govt. Rifle Range, Govt. Fish Hatchery, 4 banks, fine post office. Largest steel shipbuilding yards and dry docks in Canada—largest freight vessels in British Empire have been built here; wire nail and fencing works, \$1,000,000 meat packing and canning plant, 3 planing mills, ships' cabins and hardwood fittings, 2 foundries and machine shops, biscuits, brooms, 2 large saw mills, fruit and vegetable cannery, tannery, bricks, apple evaporator, small wooden and metal boats, flour mill, grain elevator, cold storage and grocery warehouse, and the largest fruit and vegetable farm in Canada. Alt. 587. Pop. 8,000.

SPECIAL OPPORTUNITIES.—Steel mill for ship-plate, angle iron, fish plates, rails and rods. Fully equipped

steel plant (Northern Iron and Steel Co.) which has never been operated, representing outlay of over \$250,000, is for sale at nominal figure, with 27½ acres of land very close to water front, with water front switch connection and siding. Town offers liberal assistance to purchaser. There is a very large local trade in rivets, rods, plates, angle iron, etc. Any industry, particularly those working in steel and wood. Grain elevator for distribution of grain to milling centres. To bona-fide industries town offers free site, fixed assessments and other liberal inducements. Cheap hydro power. Good openings for mechanics and their families. See illus. Advt. Write H. A. Currie, Sec. Bd. Trade, or M. P. Byrnes, Pres.

COPPER CLIFF (District of Algoma), on C.P.R. Soo Section, 4 miles w. of Sudbury. 6 churches, 2 public schools 1 bank. The Canadian Copper Co. Mining and Smelting. Neighborhood supplies copper and nickel. Good fishing and hunting. Pop. *3,086. Write Town Clerk.

CORNWALL (Stormont Co.), on St. Lawrence River, 67 miles w. of Montreal. 55 miles e. of Ottawa. On G.T.R. and Ottawa and N.Y. Ry. Terminus of Cornwall Canal. S.S. connection with principal ports. Hotels, King George, New Windsor, \$2, and 2 others. 9 churches, public, separate and high schools, commercial college. Town hall, 3 parks. Elec. light and gas. Town owns water and sewerage systems. Elec. power, 200 h.p. available at \$20 per h.p. up. Water power, about 200 h.p. 4 banks. Industries, furniture, cotton, bedsteads, iacrosse, chairs, paper, pulp and paper mill. A mixed farming and dairying district. Good supply of lumber. Fishing and hunting. Summer resor. at Stanley Island, 8 miles distant. Pop., with suburbs, 9,000.

NOTE.—Power transmission line carrying 60,000 h.p. to be completed in 1914.

SPECIAL OPPORTUNITIES.—Steady supply of labor. No unions. Liberal inducements to new industries. Write Sec. Bd. Trade.

DESERONTO (Hastings Co.), on Bay of Quinte (Lake Ontario), 130 miles e. of Toronto, 200 miles w. of Montreal. On C.N.R. connecting with G.T.R. and C.P.R. Steamship connection with all Canadian and U.S. ports on St. Lawrence River and Great Lakes. Hotels, Arlington, Deseronto, Stewart \$1.50. 4 churches, high and public schools. Public library, recreation park. Town owns gas, sewerage, and water systems. Electric light. Abundant electric power; cheap rates on sliding scale, 2 banks.

Industries include blast furnace, cannery, machine shop, saw mills, boxes, cars, matches, sashes and blinds. Safe, deep water harbor to full Welland Canal depth of future. Extensive water front. Centre of a rich fruit-growing district. Neighborhood supplies abundant lumber. An attractive summer resort. Good bathing, boating and fishing. Alt. 252. Pop. 3,200.

SPECIAL OPPORTUNITIES.—All industries, especially those requiring large supplies of raw material in bulk. Steel and iron industries, pulp and paper mills, cement works, textiles, smallwares of all kinds. Cheap coal and electric power. No labor troubles. Cheap labor, male and female. Cheap sites and other liberal inducements on application. Write Pres. Bd. Trade.

DRESDEN (Kent Co.), on Sydenham River, navigable, and Pere Marquette Ry. Hotel, Wescott. Industries, grist mill, foundry, builders' factory, bentwood, 2 flour mills, cannery, flax mill, bricks, and tiles, planing mill, 2 elevators, creamery. Good farming country, producing corn, tomatoes, potatoes, sugar beets, tobacco. Alt. 604. Pop. *1,551.

SPECIAL OPPORTUNITIES.—Manufactures, fruit and dairy business, short railway line to Thamesville to connect C.P.R. and G.T.R. with town, farm laborers. Inducements offered on application. Write Town Clerk.

DUNDAS (Wentworth Co.), on G.T.R., T.H. & B. Ry., Electric Ry. from Hamilton, 5 miles, hourly service; Desjardines Canal connecting with Lake Ontario. Hotels, Collins, Melbourne, Osborne, Riley House. 5 churches, public, separate and high schools, armory, public library, 25-acre park. Cataract Power Co. and hydro-electric power. 2 banks. Industries include quarry, tanneries, small tools, baskets, gloves, malt, clothing, hosiery, doors, yarns, machine tools, builders' factory, knitting factory, flour mill, cement brick, barber supplies, church and school furniture, willow furniture, gasoline engines. Alt. 316. Pop. *4,297. Write Chairman Industrial Committee.

DUNNVILLE (Haldimand Co.), on Grand River, 40 miles w. of Buffalo, N.Y.; 34 miles s.w. of Hamilton. On G.T.R., connected with Lake Erie (5 miles) by Grand River, navigable to Dunnville. Hotels, Victoria, Queen's. 5 churches, park, town hall. Town owns sewerage system. Elec. light by private co. Elec. power at \$25. Nat. gas, 20c. to manufacturers; 25c. domestic. 3,000 h.p. water power available. 3 banks. Industries: Knitting mills (2), hammocks, engines, foundry, bricks, woollen

mills, ice, sewing machines, cannery, evaporator, planing mill, flour mills (2), machine shops (2), cement blocks and bricks, boats. Neighborhood supplies lumber and stone. Good scenery, fishing and shooting. Gun club, tennis, etc. Pop. 3,500.

SPECIAL OPPORTUNITIES.—Manufacturers can develop power from nat. gas for \$7 per h.p. Liberal inducements to new industries. Write the Mayor.

DURHAM (Grey Co.), on Saugeen River, C.P.R. and G.T.R. 28 miles s. of Owen Sound. Hotels, Hahn, Central, Mid-daugh. 5 churches, public school, Carnegie library, banks. Industries include grist mill, woollen mill, planing mill, oatmeal mill, tannery, foundry, furniture factory, Portland cement works, saw mills. Pop. *1,579.

SPECIAL OPPORTUNITIES.—Sash and door, iron bedstead, mattress and bed spring factories. Tax exemptions, free sites, loans without interest and other inducements offered. Developed and undeveloped water powers available, and some electricity. Low tax rate, cheap living. Write the Mayor.

ELK LAKE CITY (Temiskaming Dist.), on Elk Lake, an extension of the Montreal River, about 350 miles n. of Toronto, on T. & N.O. Ry. branch from Earleton. 2 steamboats daily in summer from Latchford, 55 miles. Local tel. and 'phone to principal mines and to Gowganda and Charlton. Hotels, King George, Matabinick and 2 others \$2.50, 8 restaurants. 4 churches (Ang., Pres., Meth., R.C.), school, electric light and power, bank. 3 saw mills, planing mill, 27 stores of all kinds, 2 liverys. Centre of silver mining district. Permanent pop. about 700; a large floating population. 500 men employed in neighboring mines.

SPECIAL OPPORTUNITIES.—Mining, building, freight teaming to mines. Write Sec. Bd. Trade.

ELMIRA (Waterloo Co.), on C.P.R. and G.T.R., 12 miles n. of Berlin. Hotels, Zilliax House and 2 others. 7 churches, high and public schools, public library (Carnegie library under construction). Municipality owns electric light and waterworks. Hydro-electric power. 2 banks. Industries include furniture factory, foundry and machine shops, 2 felt boot factories, transmission supplies (wood split pulleys, hangers, etc.), saw and planing mills, brick yard, 2 grain elevators (cap. 125,000 bushels). Surrounded by very rich general mixed farming district. Alt. 1,142 Pop 2,000.

SPECIAL OPPORTUNITIES.—Factory for skirts, white-wear, cuffs and collars. Any industry using dairy products—creamery, cheese or condensed milk factory. Leather boot and shoe, knitting, brush and broom, cigar, chair, button, textile machinery and woodworking machinery factories, carriage works, any leather industry, saw mill. Excellent shipping facilities and labor conditions. Steady supply of local labor—both male and female, good openings for skilled mechanics. Factory sites on C.P.R. and G.T.R. Town offers free sites, tax exemptions, free water and other inducements. Write W. L. Badley, Sec. Bd. Trade.

ELORA (Wellington Co.), at confluence of Grand and Irvine Rivers, on C.P.R. and G.T.R., 13 miles n.w. of Guelph. Hotels, Commercial, Iroquois, Royal. 4 churches, high and public schools, Carnegie library, armory, 2 banks. Industries include cabinet, carriage, sash and door, and agricultural implement factories, saw mill, 2 furniture factories, tannery. Beautiful surrounding scenery. Alt. 1,270. Pop. 1,197.

SPECIAL OPPORTUNITIES.—Lime kiln, lime products, novelties, whitewear, overalls, knitting mill, machine shop, furniture factories. Large factory with good water power for sale, suitable for furniture or pianos. Write Pres. Bd. Trade.

ENGLEHART (Temiskaming Dist.), 400 miles n. of Toronto, div. point on T. & N.O. Ry. Hotels, Englehart, King Edward, 4 churches, synagogue, public school, jail, greenhouses and parks. Bank, 2 saw mills, elec. power 400 h.p. available. Elec. light Co. Gold and silver deposits, pulpwood and timber plentiful. Pop. 750.

SPECIAL OPPORTUNITIES.—Sash and door factory, flour and feed mill, butter factory, baker. Town offers tax exemptions to new industries. Write Sec. Bd. Trade.

ESSEX (Essex Co.), on M.C.R., Electric Ry. to Kingsville, 12 miles; Windsor, 16 miles, and Leamington, 17 miles. Hotels, Aberdeen, Grand Central. 5 churches, public and high schools, 1 bank. Industries, canning and preserving co., bricks and tiles, 3 grist and flour mills, lumber co. Natural gas 25c. per M. ft. Alt. 643. Pop. 1,398.

SPECIAL OPPORTUNITIES.—Boring for oil, gas or petroleum, farm implements, tiles, automobile top factory. Town offers tax exemptions to new industries. Write Sec. Bd. Trade.

EXETER (Huron Co.), on G.T.R. Hotels Central, Commercial. 5 churches, 2 parks, 2 banks. Town owns

waterworks. Elec. light by private co. Industries, flour mill, builders' supplies, canning, clothing. Alt. 872. Pop. 1,500.

SPECIAL OPPORTUNITIES.—Foundry. Fixed assessments and loans offered to new industries. Write H. Grigg, Sec. Pub. School Bd.

FENELON FALLS (Victoria Co.), on G.T.R. Steamboats to Coboconk and Rosedale. Hotels, Kawartha (summer only), Mansion, Brooks, McArthur. Churches of all denominations, public and high schools. Town owns elec. light and power plants. Water power close to timber supplies. 2 banks. Industries, 2 flour mills, saw and shingle mill, woollen mill, boats, 2 planing mills. Summer resort. Alt. 845. Pop. 1,300.

SPECIAL OPPORTUNITIES.—Tannery, knitting and woollen mills, woodenware, shoe factory. Cheap power. Free sites. Write Pres. Bd. Trade.

FERGUS (Wellington Co.), on Grand River, 14 miles w. of Guelph, on G.T.R., and C.P.R. Hotels, Commercial and 2 others. 5 churches, school, opera house, library. Town owns water system. Elec. light (private co.), 2 banks. Industries: Farm accessories (2), cereal mill, lime and building stone, marble works, saw mill. Pop. 1,600.

SPECIAL OPPORTUNITIES.—Town offers loans to new industries. Write the Mayor.

FORT ERIE (Welland Co.), on Niagara River, $\frac{1}{2}$ mile from Buffalo, N.Y., 100 miles s. of Toronto. On G.T.R. and Mich. Central Ry. Hotels, King Edward \$2, Anglo-American, Queen's. 5 churches, public school, city hall, public library. Town owns elec. light and water systems. Abundant elec. power. Nat. gas at 30c. per thousand cub. ft. Bank. Planing mill and lumber yard, 5 stores. An agricultural and fruit-growing district. Summer resorts nearby with fishing, bathing, etc. Pop. 1,500.

SPECIAL OPPORTUNITIES.—Building houses to rent. To new industries town offers exemptions in tax and water rates. Write Town Clerk.

FORT FRANCES, on Rainy River, $\frac{1}{2}$ mile from Rainy Lake. On C.N.R., D.R.L. & W. and M. & I. Direct connection with Winnipeg, 208 miles; Port Arthur, 231 miles; Duluth, 172 miles. Terminus of N. Minnesota Nav. Co., and Rainy River Nav. Co. from Kenora. Hotels, Emperor, Fort Frances, Monarch and Palace. \$20,000 city hall. Churches of all denominations; public schools. Electric power, 14,000 h.p. developed. 2 banks. Industries, pulp and paper mill (450 hands) across the

river, 2 lumber mills (600 to 800 hands), lumber preserving plant, brick yard, planing mill, mineral water, bottling works, cement block plant, large peat works, machine shop, fisheries. Resort for tourists and sportsmen. Alt. 1,112. Pop. 3,000.

NOTE.—The G.N.R. is being built to within 40 miles of Fort Frances. The Soo Line is being built from Thief River Falls.

SPECIAL OPPORTUNITIES.—Flour mills, boat factory, furniture and other wood working, tanneries, all industries utilizing wood pulp. Flat rate of assessment for ten years to new industries. Write Sec. Bd. Trade.

FORT WILLIAM (Thunder Bay Dist.), at head of lake navigation on Lake Superior, hulk-breaking point for all incoming and outgoing freight of Western Canada; lake terminus on C.P.R., G.T.P.; on C.N.R. and Mt. McKay and Kakabeka Falls Ry. Inter-city electric ry. to Port Arthur, 3 miles. All lines of passenger and freight boats on upper lakes call; vessels arriving in 1912 numbered 3,824. Hotels, Avenue \$3.50 up, Victoria, St. Louis \$3 up, Empire \$2.50 up, and 9 others. 15 churches, 10 schools, collegiate institute, 9 parks, city hall, 2 fire halls, court house, 2 hospitals, library. Municipality owns 26 miles of street ry., telephone, light, water and sewerage systems. Hydro-electric power, 45,000 h.p. developed; 100,000 still available. Rate for 24-hour service, \$25 per h.p. per ann. 11 chartered banks, 17 elevators (capacity 27,401,000 bushels). Industries include Ogilvie Flour Mills (capacity 15,000 bbls. per day), Can. Car and Foundry Co., stove ranges, bricks (5), aerated water, sashes and doors, brooms, brewery, machine shop, car wheels, 5 cement blocks, shipbuilding, power co., 2 electric light cos., etc., etc. 38 wholesale houses. District supplies iron ore developed by Atikokan Iron Co. blast furnace; silver, copper and pulpwood. Good farming and lumbering country. Fine scenery, fishing and hunting. Alt. 607. Pop. 25,000.

NOTE.—9 manufacturing plants now under construction, costing \$4,000,000, will give employment to 3,000 men.

SPECIAL OPPORTUNITIES.—Heavy iron and steel industries of all kinds, agric. implements and machinery, automobile factory, sashes and doors, interior finish plant. City offers liberal inducements in the way of sites, tax exemption, etc. Write Industrial Commissioner.

GALT (Waterloo Co.), on C.P.R., G.T.R., 25 miles from Hamilton, 60 miles from Toronto. Electric Ry. to Pres-

ton, 3 miles, Hespeler 5 miles, Paris 12 miles, Berlin 13 miles, Waterloo 14 miles, Brantford 15 miles. Hotels, Iroquois, Royal, Imperial. 9 churches, public library, Y.M.C.A., 4 large parks, 6 banks. 60 factories, including aerated waters, beds, boilers, boots, boxes, brass goods, builders' supplies, edge tools, engines, farm implements, hats, leather, lime, lumber, malt, pumps, safes, soap and oils, stoves, nails, taps, underwear, wheels. Rich agricultural district. Neighborhood supplies lumber, limestone and sand. Alt. 927. Pop. 11,300.

SPECIAL OPPORTUNITIES.—Manufactures of all kinds. Sites with railway inter-switching sidings, obtainable. Tax exemptions, loans and free sites. Natural gas 35c. per M. ft. Hydro-electric power at 4c. per k.w. Write Sec. Bd. Trade.

GANANOQUE (Leeds Co.), at junction of Gananoque and St. Lawrence Rivers, on G.T.R. Direct S.S. communication with Toronto, Montreal, Rochester and principal Canadian and U.S. ports. Hotels, Gananoque Inn, Provincial, International. 7 churches, 1 high and 3 public schools, yacht and canoe clubs, park, 2 banks. Town owns water, sewerage and fire protection systems. Industries, 20, include elec. light and power plant, cheese factory, clothes wringers, hinges and nails, hammers, gasoline engines, carriage mountings, saddlery, hardware, steel and wood hames, springs and axles, shovels, grist mill, carriage wheels, rivets, corset steels, bolt and carriage forgings, builders' factory, electric meters, 2 boat builders, 2 paving block granite quarries. A popular summer resort. Alt. 300. Pop. *3,764.

NOTE.—Elec. power from Kingston Mills will be installed shortly, providing 1,000 h.p. at low rates.

SPECIAL OPPORTUNITIES.—Cheese box factory, malleable iron works, a good \$1 a day boarding-house, planing mill, brick yard. Water power from Gananoque River. Inducements offered on application. Write Sec. Bd. Trade.

GEORGETOWN (Halton Co.), on G.T.R. Hotels, Bennett House, Clark House. 5 churches, 2 banks. Industries include 3 paper mills, 2 knitting machine factories, boots and shoes, saw mill, gloves, acetylene gas machines, coat-sweaters, carriages. Alt. 846. Pop. 1,574.

SPECIAL OPPORTUNITIES.—Building mechanics' houses. Write Town Clerk.

GODERICH (Huron Co.) county town, at mouth of Maitland River, on Lake Huron, 133 miles n.w. of Toronto, on C.P.R., G.T.R., and Ontario and West Shore Electric Ry.

(in construction); boats to Detroit, Sarnia and South and Upper Lake ports. Hotels, Bedford, British and 4 others. Industries, flour mill, foundry and machine shop, 2 elevators, knitting factory, lumber mill, organ and bath fixtures, furniture, carriages, builders' factory, salt works, tannery, clothing, apple evaporator, road machines, Goderich Wheel Rigs Co. The neighborhood supplies limestone, salt, lumber, sand suitable for glass or cement brick, clay suitable for tile and red or white brick. A favorite summer resort, with a wonderful climate. Alt. 729. Pop. *4,522. Write the Mayor.

GOWGANDA (Temiskaming Dist.), on Lake Gowganda, about 350 miles n. of Toronto. By stage from Elk Lake City on T. & N.O. Ry. (27 m.). Hotels, Queen's, King Edward, and others. 1 bank; 4 general stores, 2 druggists. Centre of mining industry (see Ontario—Silver under Mining). Permanent pop. 500. Floating pop. 1,500. Write G. W. Lee, Gen. Agent T. & N.O. Ry., North Bay.

GRAVENHURST (Muskoka Dist.), at foot of Muskoka Lake, on G.T.R. Hotels, Empress, Albion, Station. For summer boarders and tourists only, Fern Glen, Sunset Pt. Gull Lake, Pine Dale, besides many other boarding-houses and summer resorts. 3 sanitariums for consumptives 2 miles away on shore of Muskoka Bay. Waterworks and electric light, electric power. Industries include soda water, steel chairs and cabinets, carriages, 2 boat-builders' factories, 2 lumber and saw mills, interior fittings, foundry, crushed stone. Alt. 818. Pop. 2,200.

SPECIAL OPPORTUNITIES.—Manufactures using pine, hemlock and birch. Factory sites available near G.T.R. Water power, 750 available, 4,000 to 5,000 h.p. undeveloped. Electric power from South Falls. Town offers to new industries tax exemptions or fixed rate, site. Power rates \$15.00 per h.p. Opportunities for summer cottages on Gull Lake, 300 yards from centre of town. Write Sec. Bd. Trade.

GRIMSBY (Lincoln Co.), on Lake Ontario, 18 miles e. of Hamilton, 18 miles w. of St. Catharines, on G.T.R. Elec. Ry. to Hamilton. Hotels, The Village Inn and Grimsby. 5 churches, public and high school, park. Elec. light. Village owns water system. 2 banks. Industries, canneries (2), electric fittings, stoves, planing mills (2). A fruit-growing district, famous for peaches, grapes and apples. Alt. 287. Pop. 1,400.

GUELPH (Wellington Co.), on River Speed, 48 miles w. of Toronto, 28 miles n. of Hamilton, on C.P.R., G.T.R. Hotels, Wellington, King Edward, Royal, Commercial. 14 churches, 10 schools, collegiate institute. Seat of Ontario Agricultural College and Macdonald Institute (Domestic Science). Students in 1912-3, 1,163. See under "Agricultural Colleges." This institution is visited annually by 50,000 farmers. Annual Fat Stock Show held in December, visited by from 10,000 to 20,000 farmers and stock-breeders. City owns 8 parks, city hall, light, water and sewerage systems, street ry., and Guelph Junction Ry. (15 miles). Elec. power from Niagara Falls at \$22 to \$26 per h.p. per ann. Gas for manufacturing purposes, 75c per 1,000 cub. ft. 7 banks, 2 loan and savings cos., 4 wholesale houses. Industries about 70, including planos, machinery, carpets, meat packing, clothing, carriages, woodworking, steel and wire goods, boots and shoes, iron ware, brewing, etc., etc. Centre of a rich agricultural district. Trout fishing, shooting, tennis, golf, cricket, etc. Pop. 16,300.

NOTE.—C.N.R. from Toronto under construction will be in operation in 1914.

SPECIAL OPPORTUNITIES.—Any industry except the very heavy lines using coal and iron as raw materials. City offers free sites, low taxes, cash bonus and loans at low rate of interest. Labor conditions ideal. Cheap power, water, gas and elec. light. Write R. McDonald, Industrial Commissioner.

HAILEYBURY (Temiskaming Dist.), county town, on Lake Temiskaming, 107 miles n. of North Bay, on T. & N.O. Ry., and Nip. Central Electric Ry. to Cobalt (5 miles), and New Liskeard (6 miles). Temiskaming Nav. Co.'s steamers to lakeside towns. Hotels, Mattabanick, Maple Leaf, Vendome and Attorney \$2 up. Seat of R.C. cathedral and Bishop's palace, 6 churches, public (2), separate and high schools, general hospital, electric light and power. Town owns water and sewerage systems. Local and long distance 'phones. 3 banks. Saw mill, 2 lumber cos., brick yard, wholesale flour and feed store. Good farming district to n. and w. Good scenery, fishing and hunting. Pop. 4,000.

SPECIAL OPPORTUNITIES.—Pulp mill, lime mfg. plant industries using soft wood. Write Sec. Bd. Trade.

HAMILTON (Wentworth Co.), on Burlington Bay, western extremity of Lake Ontario, founded about 1810, on G.T.R., T.H. & B.R., C.P.R. Electric Ry. to Grimsby

18 miles, Brantford 25 miles, Oakville 20 miles. S.S. line to Montreal, Ft. William, Toronto. Hotels, Royal, Waldorf, and others. 75 churches, 40 schools, 28 banks. City owns water and sewerage systems. Power and light by Hydro-Electric System, Cataract Power Co. and Nat. Gas. Co. About 400 factories, including steel, iron, cotton and woollen goods, agricultural machinery, tobacco, electrical wires and cables, clothing, store fixtures, stoves, ploughs, elevators, boots, furniture and many other articles. 40 wholesale houses. Centre of fruit district. Beautiful scenery. Aquatic sports, golf, tennis, etc. Alt. 323. Pop. 100,000.

SPECIAL OPPORTUNITIES.—Manufactures of iron and steel. Cheap power. Good labor conditions. Manufacturers' Annex set apart with special tax rate. For free pamphlet write Commissioner of Industries.

HANOVER (Grey Co.), on Saugeen River, G.T.R. and C.P.R. Hotels, Reld, Queen's, Scarboro. 9 churches, 3 schools, public library, 2 banks. Industries, 8 furniture factories, bricks, cement, woollen mill, flour mill, shirt factory. 600 h.p. water power available. Pop. *3,000.

SPECIAL OPPORTUNITIES.—Bedstead, whitewear and iron-working factories. Write the Mayor.

HARRISTON (Wellington Co.), on Maitland River, on G.T.R., C.P.R. Hotels, Royal, and 3 others. 4 churches, high and public schools, library, park. 2 banks. Town owns light and water systems. Industries include stoves, planing mill, furniture, wood novelties, grist mill, casket co., cold storage plant. Alt. 1,256. Pop. 1,500.

HAWKESBURY (Prescott Co.), on Ottawa River, half-way between Montreal and Ottawa, on G.T.R., and C.N.R. Hotels, Royal, King Edward, and 5 others. 3 churches, public, separate and high schools. Elec. light and power plant. Town owns water and sewerage system. 2 banks. Industries include lumber mill, pulp and paper mills, etc. Neighborhood supplies lumber and stone. Alt. 141. Pop. 4,400.

NOTE.—Abundant elec. power will be available in 1914.

SPECIAL OPPORTUNITIES.—Marble works, foundry. To new industries town offers exemption from taxes, free sites and other inducements. Labor conditions good. Write Town Clerk.

HESPELER (Waterloo Co.), on River Speed, 9 miles s. of Guelph, 6 miles n.e. of Galt, 3 miles e. of Preston. On G.T.R., connection with C.P.R. at Galt by Galt, Preston and Hespeler Elec. Ry. Hotels, Queen's, Commercial.

8 churches, public schools, 2 parks. Town owns hydro-electric power plant. 350 h.p. available. Rates according to amount used. Water power, 400 h.p. available. 2 banks. Industries, blacksmiths' tools, woodworking machinery, furniture (2), stoves and furnaces, woollen mill machinery, textiles, sashes and doors, enamelled iron, lightning rods. Good farming district. All kinds of sports. Alt. 943. Pop. 3,000.

SPECIAL OPPORTUNITIES.—Foundries, furniture factories, free sites, tax exemptions and loans to new industries. Good labor conditions. Write Sec. Bd. Trade.

HUNTSVILLE (Muskoka Co.), 145 miles n. of Toronto, on G.T.R. Local steamboat service. Hotels, Kent, Dominion, Vernon and G.T.R. summer hotel "Wa-Wa." 6 churches, public and continuation schools, bank. Town owns light and water systems. Industries, tannery, planing mill, leather co., machine shop, 3 lumber mills. Timber, tan bark and minerals in neighborhood. A beautiful summer tourist country. Alt. 957. Pop. *2,358.

SPECIAL OPPORTUNITIES.—All woodworking industries, summer cottages and hotels. Liberal inducements offered. Write Sec. Bd. Trade.

INGERSOLL (Oxford Co.), on Thames River, 20 miles e. of London, on G.T.R., C.P.R., T.L. and E. and P. Electric Railway to Woodstock. Hotels, New Daly, Atlantic and 3 others. Industries, 35 factories, including tools, furniture, hay forks, pianos, nuts, machine screws, cheese, pork packing, mowers, hearses, reapers, 2 builders' factories, 2 oatmeal mills, woollen mill, baskets, condensed milk, agricultural implements, fruit packages, flour mill, saw mill, planing mill, grist mill, knitted underwear, fertilizer plant. Alt. 879. Pop. *4,757.

SPECIAL OPPORTUNITIES.—Manufacturers using agricultural products and wood. Electric power supplied \$45 per h.p., and up to 10c. per k.w. by Niagara Municipal Power Co. Factory sites on 2 railways. Inducements offered on application. Write Pres. Bd. Trade.

KEEWATIN (Kenora Dist.), on Lake of the Woods, 130 miles e. of Winnipeg, on C.P.R. Steamships of Northern Nav. Co. and Rainy River Nav. Co. Hotels, Empire. Bay City. 3 churches, public, separate and high schools, park at Keewatin Beach. Elec. light supplied from Kenora. 2,000 h.p. water power available. 1 bank. Industries, lumber co., boat building co., milling co., 15 stores. Famous summer resort. Yacht club. Good fishing and big game hunting. Pop. in winter 1,200, in summer 2,000. Write Sec. Bd. Trade.

City of the Thousand Isles

BROCKVILLE

LIBERAL INDUCEMENTS TO

Three Railroads:

G.T.R.
C.P.R.
C.N.R.

**All Steamship
Lines on
St. Lawrence call
at Brockville**

**Nearest
Canadian Town
to New York City.
Ferry connection
to N.Y.C. trains,
at Morristown,
N.Y.**

**Cheap Electric
Power**

**Municipally
owned
Public Utilities**



— King Street, Brockville

Brockville's leading industries comprise the manufacturing of gloves, suspenders, neckwear, motor boats, engines, grinders, and many other articles.

Read the description of Brockville in the

Write for full information, and send no money.

**THE SECRETARY, BOARD OF
BROCKVILLE.**

BROCKVILLE

ENTS TO BONA-FIDE INDUSTRIES



Stre., Brockville, Ont.

Manufacturing of stoves, furnaces, hardware, automobiles, carriages, agricultural implements, hats, biscuits, confectionery, etc.
 (See also Brockville on page 27.)
 and secure reports on openings in any line, to

OF TRADE, OR TOWN CLERK
BROCKVILLE, ONTARIO

*A Central
 Location*

**Largest
 Dairymen's
 Section in
 Ontario**

**First-Class
 Distributing
 Centre**

**Finest
 Residential
 Town in Canada**

**Ideal
 Summer Resort.
 Excellent
 Boating and
 Fishing on
 St. Lawrence**

**Two hours
 from famous
 Rideau Chain of
 Lakes**

KEMPTVILLE (Grenville Co.), on a branch Rideau River on C.P.R. S.S. connection with Ottawa River ports. Hotels, McPherson, Kerr. 5 churches, public and high schools, library, park, 2 banks. Industries include planing mills, electric power plant, concrete pipe works, foundry. A farming district. Alt. 297. Pop. 1,250.

SPECIAL OPPORTUNITIES.—Knitting mill, brick making. Elec. power at \$20 per h.p. Write the Reeve.

KENORA, formerly Rat Portage (Rainy River Dist.), on Lake of the Woods, on C.P.R., 133 miles e. of Winnipeg. Steamers of Rainy River Nav. Co. and Northern Trans. Co. Hotels, Tourist, Hilliard, King Edward and 5 others. Ang. and R.C. cathedrals, 5 churches, hospital, court house, jail. Town owns telephone, light, water and sewerage systems. 50,000 h.p. partly developed from 2 water powers. 3 banks. A growing summer resort. Industries include flour mill, lumber mill, 2 boat factories, 2 tile mills, 2 wholesale houses. Neighborhood supplies various kinds of lumber. Gold found nearby. Good hunting and fishing, with good hotel accommodation. Alt. 1,088. Pop. 46,159.

NOTE.—Town hall and fire hall in construction.

SPECIAL OPPORTUNITIES.—Brick manufacturing, pulp and paper mills, steam laundry, gasoline boat works, electric smelting of iron ores, gold mining. Write Sec. Bd. Trade.

KINCARDINE (Bruce Co.), on e. shore of Lake Huron directly opposite Alpena, Mich. (97 miles), 100 miles n. of London, 160 miles w. of Toronto. On G.T.R. Steamship connections with Cleveland and Sault Ste. Marie. Hotels, Royal, Queen's, and 2 others. 4 churches, high and public schools, Carnegie library, city hall, 2 parks. Town owns elec. light and water systems. Elec. power at 10c. per k.w. hour. 2 banks. Industries include bridge and boiler works, pork packing, sashes and doors (2), salt, chairs, furniture. Neighborhood supplies sand, clay, marl, limestone and salt. Rich mixed farming and fruit-growing district. Popular summer resort, with bathing, boating and fishing. Good summer cottages to rent. Alt. 587. Pop. 2,500.

SPECIAL OPPORTUNITIES.—Summer hotel, knitting mill, iron industry, table factory. Steady supply of male and female labor. Town offers free sites and water, tax exemption and loan to new industries. Several factory buildings vacant which could be obtained free by bona-fide manufacturers. Write Sec. Bd. Trade.

KINGSTON (Frontenac Co.), at mouth of Cataraqui River, where St. Lawrence leaves Lake Ontario. Outlet of Rideau Canal. On G.T.R., C.P.R., C.N.R. On line of all river and lake S.S. Cos. Local elec. ry. Hotels, Frontenac, British American, Randolph. Seat of Queen's University and Royal Military College. Numerous churches, good schools, 4 parks, 8 banks. City owns light, water and sewerage systems. 1,200 h.p. elec. power available. Industries include smelters (2), locomotives, textiles, hosiery, tiles (2), paper boxes, motor cars, pianos, boats, planing mill, breweries (2), 4 elevators. Large feldspar mines nearby. Alt. 261. Pop. 21,000.

SPECIAL OPPORTUNITIES.—Manufacturing clay and feldspar products. Free sites and tax exemptions to new industries. Cheap coal. Write Sec. Bd. Trade or Chairman Industrial Committee.

KINGSVILLE (Essex Co.), on Lake Erie, on Père Marquette Ry. Elec. Ry. to Leamington, 8 miles; Windsor, 28 miles. S.S. to Pelee Island. Hotels, King's, Grovedale. 3 churches, school, library, 2 parks. Town owns waterworks. Elec. light by private co. Nat. gas. Industries, woollen mill, cabinet shop, builders' factory flour mill, 3 tobacco factories, cigars, stoves, metal weather strips. Alt. 608. Pop. 2,000.

SPECIAL OPPORTUNITIES.—Natural gas at 13c. per 1,000 ft. for manufacturers, free sites, loans and tax exemptions. Write Sec. Bd. Trade.

LAKEFIELD (Peterboro Co.), on the Otonabee River and Trent Valley Canal, 10 miles from Peterborough; on G.T.R. Terminus of Stoney Lake Nav. Co. Hotels, Lakefield, Commercial. 4 churches, public and continuation school, Lakefield Boys' School, 50 students. Town hall, park, elec. light co., bank. Industries, Portland cement, 2 canoe factories, planing mill, lumber mill, cheese factory, butter factory. Alt. 770. Pop. 1,411.

SPECIAL OPPORTUNITIES.—Woodworking factories, industries using Portland cement. Write Pres. Bd. Trade.

LATCHFORD (Coleman Township, Nipissing Dist.), on Montreal River, widening in Bay Lake, 9 miles south of Cohalt, on T. & N.O.R. S.S. line on Montreal River to Elk Lake. Hotels, King Edward, Royal. 3 churches, 2 schools, bank. Railway station for Temagami Forest Reserve and Montreal River silver and gold fields. Industries, 2 saw mills, lumbering industry. Permanent pop. *428.

LEAMINGTON (Essex Co.), on Lake Erie, on M.C.R., Père Marquette Ry., on electric line to Windsor, 35 miles. Steamer to Pelee Island. Hotels, Ryall, Deming. Public and high schools, library, 3 banks. Power from natural gas. Elec. light and power. Town owns water system. Industries, grist mill, tobacco (2), baskets, foundries (3), fruit canning, handles, catsup, cigars, sashes and doors, Heinz pickle factory. Neighborhood supplies tobacco, early fruits and vegetables. (For particulars of tobacco industry, of which this is the centre, see under Agriculture.) Alt. 626. Pop. 3,652.

SPECIAL OPPORTUNITIES.—Manufactures using agricultural produce. Town offers tax exemptions and free water. Write the Town Clerk.

†LINDSAY (Victoria Co.), on Scugog River, 69 miles n.e. of Toronto, on C.P.R., G.T.R. S.S. connection with Trent Valley Canal. Hotels, Benson, Simpson. 5 churches, 4 public schools, 1 separate, collegiate institute, convent. 3,000 h.p. elec. power available; rate, \$18 to \$20 for 24-hour service. 4 banks, loan and savings co. One wholesale store, 75 retail. Good scenery, fishing and hunting. Alt. 854. Pop. 8,000.

SPECIAL OPPORTUNITIES.—Any industry. Cheap power. No unions or labor troubles. Tax exemptions and free sites to new industries. Write Sec. Industrial Commission.

LISTOWEL (Perth Co.), on G.T.R., C.P.R. Hotels, Arlington, Grand Central. 7 churches, 2 schools, business college. Town owns waterworks and elec. light. 3 banks. Industries, 2 builders' factories, chairs, pianos, furniture, brewery, flour and oatmeal mill, creamery, knitting mill, cigar factory. Alt. 1,262. Pop. *2,289. Write Sec. Bd. Trade.

†LONDON (Middlesex Co.), on River Thames, midway between Buffalo and Detroit. On G.T.R., C.P.R., P.M.R., M.C.R., Wabash Ry., St. Mary's Ry., Huron & Bruce Ry. Traction Co., London & S.E.R., London & Lake Erie Elec. Ry. to St. Thomas (18 m.). City owns London & Port Stanley Ry. (23 m.), now being electrified, which connects with s.s. to Cleveland, Detroit, etc.; 71 passenger and 188 freight trains daily. Hotels, Tecumseh \$3 up, Grigg, City, Dominion and others. Seat of Anglican and R.C. Cathedrals. Seat of Western University, conferring degrees in Arts, Medicine and Divinity. School attendance 11,500 in 1913. Springbank Park, 272 acres with well appointed vaudeville theatre, pavilion, etc. Western Fair held annually in September. Civic hydro-elec. com-

mission supplies power and light at minimum rates. Competitive power co. City operates supply of absolutely pure water: Typhoid unknown. 11 banks, 6 loan and savings cos., head offices of several insurance cos. Industries: 241 factories, including iron, wood, leather, brass, cigars, paper boxes, furniture, engines, agricultural implements, stoves (largest factory in the Empire) biscuits and candies (two largest in Canada), tinware, shoes, boilers, brass working, chemicals, breweries, etc. Commercial centre of Western Ontario. Second wholesale centre in Dominion, 60 firms. Neighbourhood supplies abundant brick clay. A rich agricultural district supplying all kinds of cereals, fruit and vegetables. Beautiful scenery. Alt. 809. Pop. 56,000.

NOTE.—New post office, city hall, R.C. seminary and other schools will be built in 1914.

SPECIAL OPPORTUNITIES.—Manufactures of all kinds, especially steel and iron products, malleable iron foundry, shoes, elec. car shops, canneries, clothing, sboddy, automobiles, agricultural implements, hardwood flooring, building supplies, hardware. Good labour conditions; strikes almost unknown; 80 per cent. of the workmen own their own homes. Cheap living. Cheap Niagara power. City offers loans and partial tax exemption. Industrial Bureau supplies reports free. See Middlesex County, under "Agric. and Fruit Districts," and illus. advt. Write Industrial Commissioner.

¶L'ORIGINAL (Prescott Co.), county town on C.N.R., half-way between Montreal and Ottawa, 50 miles; Caledonia Springs, 6 miles. Ottawa River boats. Hotels, Grand Central, Ottawa. 4 churches, school, convent. Saw mills. Electric light. Lumber of all kinds obtainable. Pop. 1,500.

SPECIAL OPPORTUNITIES.—Any kind of woodworking. Inducements on application. Write the Reeve.

LUCKNOW (Huron Co.), on G.T.R. Daily stage from Goderich. Hotels, Cain, McGarry, Churches, public school, 2 banks. Industries, apple evaporator, woollen mills, 3 saw mills, furniture, builders' factory, flour mill. Alt. 908. Pop. 1,200.

MATTAWA (Nipissing Dist.), at east end of Lake Temiskaming, at junction of Mattawa and Ottawa Rivers, 45 miles e. of North Bay, on C.P.R. main line and Klppewa br. Hotels, Victoria, Mattawa, Rosemount, Ottawa. 4 churches (Ang., Pres., Meth., R.C.), public and separate schools, court house, gaol, town and fire halls, electric

light, bank. Shingle mill, saw mill. Large deposits of mica nearby. Good fishing and hunting. Alt. 564. Pop. *1,523.

SPECIAL OPPORTUNITIES.—Lumbering, several good water powers awaiting development. Write the Mayor.

MEAFORD (Grey Co.), port on Georgian Bay, on G.T.R. Between Owen Sound and Collingwood (20 miles each). Fine harbor, 20 ft. of water. 5 boats weekly to West. Hotels, Paul's, Royal, Queen's. 5 churches, high and public schools, town hall, fire hall, armory. Electric power, 500 h.p. available. 2 banks. Industries include bricks, hardwood floors, mantle, foundry and machine shop, flour mills, boxes, canning factory, furniture, wheelbarrows, blankets and yarns, flooring, 3 fruit evaporators, 2 builders' factories, tannery, grain elevator. Apple-growing district. Alt. 672. Pop. 3,000.

SPECIAL OPPORTUNITIES.—Chair, iron bed and wood-working factories, boat bullder. Town offers free sites, free water, tax exemptions, and possibly free loan. Write Sec. Bd. Trade.

MERRITTON (Lincoln Co.), on G.T.R. and Welland Canal. Electric line from St. Catharines. Hotels, Union, Mansion House. Industries, bentwood, rubber, Presto-lite, 2 paper mills, carbide factory, foundry, and wire rope works, planing mill. Alt. 389. Pop. *1,670.

SPECIAL OPPORTUNITIES.—To new industries town offers inducements, abundant water power and good railway facilities.

MIDLAND (Simcoe Co.), on the Georgian Bay, 120 miles from Toronto, G.T.R. Northern Nav. Co. to Parry Sound. Hotels, Gladstone, Queen's, Hewis, American. 5 churches, 1 high, 3 public schools, 3 banks. Industries, 3 large elevators, iron smelters, 4 lumber mills, foundry and machine shop, box shook factory, woollen mill, 1 blast furnace, 1 flour mill, 2 engine works, 3 elevators, 2 coal docks, 1 shlpbuilding yard. Power from Severn River. Alt. 593. Pop. *4,660.

SPECIAL OPPORTUNITIES.—Stove factory, electrical works, dry dock, building mechanics' houses. Write Sec. Bd. Trade.

MILTON (Halton Co.), on C.P.R., G.T.R., 32 miles w. of Toronto. Hotels, McGibbon, New Royal, Commercial. 3 churches, 1 school, county buildings, 2 parks. Municipal electric light and waterworks, 3 banks. Industries, carpets, saw mill, creamery, wire nails, flour mill, 3 pressed brick works, planing mill, boots and shoes, crushed stone

and lime, wood screws and rivets, nickel and silver plating, electric motors, foundry. Alt. 660. Pop. *1,825.

SPECIAL OPPORTUNITIES.—Basket factory. For manufacturers there are good shipping facilities. Factory sites adjacent to competitive railway lines, with tax exemption and free water. Mortgages on farm property. Write Sec. Bd. Trade.

MITCHELL (Perth Co.), on Thames River, on G.T.R., 12 miles w. of Stratford. Hotels, Hicks, Royal. 4 churches, public and high schools, 2 banks. Town owns light, power and water systems. Industries, knitting mill, flax mill, foundry, bricks and tiles, woollen mill, flour mill, planing mill, bridge works, evaporator, cold storage. Alt. 1,121. Pop. 1,900. Write the Mayor.

MORRISBURG (Dundas Co.), on St. Lawrence River, 90 miles w. of Montreal on G.T.R. Connection with R. & O. Nav. Co. at Prescott. Hotels, St. Lawrence \$2, Windsor, Southern \$1.50. 5 churches, 2 banks. Town owns electric light and water system. 1,100 h.p. water power available. Industries, stone works, nail factory. Good scenery, fishing and boating. Pop. 1,800.

MOUNT FOREST (Wellington Co.), on C.P.R., G.T.R. Hotels, Queen's, Coyne. Industries include foundry, caskets, carriages, grist mill, woollen mill, brick yard. Alt. 1,348. Pop. 1,837.

SPECIAL OPPORTUNITIES.—Furniture or woodenware factory, organ and piano case factory. By damming, 90 h.p. available. Write Sec. Bd. Trade.

NAPANEE (Lennox and Addington Co.), on Napanee River, navigable to Bay of Quinte; 135 miles e. of Toronto, on G.T.R. and C.N.R., connecting with C.P.R. at Tweed. Hotels, Campbell, Paisley and 2 others. 5 churches, public school, collegiate institute, county municipal bldgs., park, race track, elec. light, gas, water and sewerage systems. 3 banks. Industries include flour mills (2), foundry and machine shop, cannery, bricks and tiles (2), saw mill, furniture, planing mills and motor boat works, carriages. Water power available. Neighborhood supplies brick clay and cement clays. Centre of good farming district. Alt. 313. Pop. about 4,000.

SPECIAL OPPORTUNITIES.—Furniture and other factories. Power at \$12 per h.p. up. Free sites and fixed assessments offered. Write Town Clerk.

NEW HAMBURG (Waterloo Co.), on River Nith, 75 miles w. of Toronto, 14 miles from Berlin and Stratford, on

G.T.R. Hotels, Commercial, Imperial and 2 others. 7 churches, Hydro-electric light and power. 2 banks. Industries include silverware, felt boots, brass work, electric meters, furniture, bricks, flour mill, foundry, farm implements. Pop. 1,800.

SPECIAL OPPORTUNITIES.—Building private houses. Good labor conditions. Town offers bonus to new industries. Write Sec. Bd. Trade.

NEW LISKEARD, at head of Lake Temiskaming, on T. & N.O. Ry. Steamers to Kippewa, connecting by short line with C.P.R. at Mattawa. Electric Ry. to Haileybury, 5 miles; Cobalt, 10 miles. Hotels, Grand Union, Canada, Windsor. 5 churches, school, fire hall, public library, theatre, hospital. Municipal electric light and water-works. 2 banks. Industries, 5 saw mills, bricks, foundry. Electric power, 2,000 h.p. can be developed 12 miles distant. Neighborhood supplies pulpwood and clay. A good and largely settled agricultural district. Pop. *3,000.

SPECIAL OPPORTUNITIES.—Furniture factory, brick yards, grist mill, dry goods, dairy and truck farming to supply Cobalt mining camps. Write Sec. Bd. Trade.

NIAGARA FALLS (Welland Co.), on G.T.R., M.C.R., C.P.R., C.N.R., Erie Ry., N.Y.C. and H.R.R., Lehigh Valley, Lake Shore, W. and O., Wabash, Père Marquette, International Traction (electric), N., St. C. and T. (electric), Hotels, Clifton, Savoy, Windsor, New Rosli, Lafayette, Hospice, Trennick. Power is supplied by natural gas and 3 electric companies generating 450,000 h.p. Industries include cereal foods, carborundum, graphite, cyanide, suspenders, neckwear, wire chain, silverware, hats, hosiery, foot supports, carpet sweepers, automobile accessories, paper boxes, aluminum novelties, corsets, cannery, creamery, planing mill, 2 builders' factories, foundry and machine shop, electro-chemical industries, sanitary cans. In neighborhood is found Queenston limestone, brick clay, building sand, and gravel. Alt. 573. Pop. *9,245. See Niagara District under "Agric. and Fruit Districts."

SPECIAL OPPORTUNITIES.—Iron and steel industries, textile and other manufacturing industries, contractors, builders, real estate, building houses and business blocks for sale or rental. Power rates—electric, \$10-\$17 per h.p.; natural gas, 32c. per M. ft. Town offers manufacturers fixed assessment or exemption from taxation for a term of years, and free sites to all, dependent on nature of applicant's industry. Write Sec. Bd. Trade.

NORTH BAY (capital of Nipissing Dist.), on Lake Nipissing, on G.T.R., C.P.R., T. & N.O. Ry. Dom. Ex., Can. Ex. Tel. C.P.R., G.N.W., T.N.O. Hotels, Pacific, Queen's, Cecil. 5 churches, schools: 1 normal, 1 high, 3 public, 2 separate; gaol, court house, registry office for Nipissing District, 3 banks. Industries, 2 planing mills, 2 saw mills, smelter, foundry, brick plant, brewery, box factory, car repair shops, machine shops. A lumbering and mining district. Headquarters for French River tourist route, daily boats in summer. Alt. 659. Pop. 10,000.

NOTE.—C.N.R. transcontinental line, and water connection with Great Lakes via French River, expected.

SPECIAL OPPORTUNITIES.—Woodworking industries, boots and shoes, clothing, foundry, flour mill, abattoir and packing plant, car works for construction of wooden ry. cars. 4,000 h.p. electric power available. Inducements on application. Write Sec. Bd. Trade.

NORTH COBALT (Nipissing Dist.), on T. & N.O. Ry., and headquarters of Nip. Central Ry. Electric rys. to Cobalt (3 miles), Haileybury (2 miles, New Liskeard (8 miles), Can. Ex., Dom. Ex. Tel. T. & N.O. 5 churches, public and high schools, R.C. college. Planing mills, cigar factory, bottling works, 3 dairies, 4 large market gardens, lumber yard, saw mill, 5 general stores, 4 others. Centre of Cobalt mining district. See under Mining—Silver. Surrounded by good market gardening and poultry farming district.

SPECIAL OPPORTUNITIES.—Foundry, pulp and paper mills, greenhouses, furniture factory. Cheap electric power, \$9 per h.p. up. Townsite extends to Lake Temiskaming, with half-mile lake front for harbor and docks. To new industries town offers free sites, tax exemptions and liberal inducements. Write Pres. Bd. Trade.

NORWICH (Oxford Co.), on Otter Creek and G.T.R., 16 miles s.e. of Woodstock. Hotel, Dake House. 6 churches, public and high schools, 2 banks. Industries include brooms, cider and vinegar works, saw and planing mills, condenser, evaporator, flour mill. Alt. 846. Pop. 1,200.

SPECIAL OPPORTUNITIES.—Canning factory. Good factory sites available, with railway sidings. Niagara power. Free sites and fixed rate of taxation offered manufacturers. Write Sec. Bd. Trade.

OAKVILLE (Halton Co.), on Lake Ontario, 21 miles w. of Toronto, on G.T.R. Electric Ry. to Hamilton, 21 miles. Good harbor. Hotels, Gibson, Oakville, Murray. 5 churches, public, separate and high schools. Appleby

DESCRIPTIONS OF TOWNS

School, a first-class boys' school, J. H. Guest, Proprietor, is 1 mile out of town. Municipality owns waterworks and electric light. 3 banks. Industries include planing mill, tanning, baskets, boat building, evaporator, aluminum ware. Alt. 329. Pop. 2,372, in summer 2,800.

SPECIAL OPPORTUNITIES.—Real estate investments. Oakville is becoming a residential suburb of Toronto. Inducements offered to new industries. Write Publicity Commissioner.

ORANGEVILLE (Dufferin Co.), county seat. On C.P.R., 49 miles from Toronto. Hotels, Queen's, Grand Central. Public and high schools, 5 churches. Electric light and waterworks. Electric power. 3 banks. Industries include foundry and machine shop, furniture, cement, builders' factory, chop mill, flour mill. Alt. 1,395. Pop. 2,340.

SPECIAL OPPORTUNITIES.—Boot and shoe factory, carriage factory, stove works, 2 buildings available.

ORILLIA (Simcoe Co.), on Lake Couchiching, 86 miles n. of Toronto, on G.T.R., C.P.R. On route of projected Trent Valley Canal. Hotels, Orillia, Daly, Gladstone. 7 churches, 5 schools, collegiate institute. Municipal buildings, opera house, Y.M.C.A., Provincial Asylum for Feeble-minded, Carnegie library. 2 parks. Town owns light, water and sewerage systems. Elec. power, 2,000 h.p. available. Rate, \$18.40 per h.p. for 10-hour service, special rate for 24-hour service. 4 banks. Industries include, clothing (2), refining and smelting, wood specialties, oxyoline apparatus, saw mill machinery, planing mills (2), boats and canoes (2), hoops, brewery, hardware, furniture, pumps, farm implements, automobiles, carriages, wagons, cement, bricks, 4 wholesale houses. A farming and fruit-growing country. Abundant timber. Popular summer resort. Good bathing and fishing. Golf links. Alt. 732. Pop. 7,800.

SPECIAL OPPORTUNITIES.—Auto tyre and rubber factory, whitewear, automobiles, furniture. To bona-fide industries town offers fixed assessment, free sites and loans. Cheap power. Good labor conditions. Write Sec. Bd. Trade.

OSHAWA (Ontario Co.), 2 miles from Lake Ontario, 34 miles e. of Toronto, on C.P.R., C.N.R., G.T.R., and Toronto and Eastern Elec. Ry. Local elec. ry. connects all factories with steam railways. Hotels, Commercial, Queen's, Oshawa, Central. 7 churches, high school, 5 public schools, Y.M.C.A., Carnegie library, armory, hospital, 2 parks. Elec. light and power from Trent River.

Town owns water and sewerage systems. Natural gas. 4 banks. Industries: steel ranges, foundry, whitewear, steam and gas fittings, carriages, automobiles, malleable iron, interior fittings, canning, textiles, metal work, leather, woollens, pianos, builders and contractors, 1 wholesale grocery. A good agricultural district. Alt. 331. Pop. 8,009.

SPECIAL OPPORTUNITIES.—Manufactures of all kinds. Good shipping facilities and labor conditions. Abundant electric power. Free sites and other liberal inducements offered. Write Sec. Publicity Committee.

OTTAWA, capital of the Dominion of Canada, on the Ottawa River, C.P.R., G.T.R., C.N.R., Ottawa and N.Y. (N.Y.C.). Suburban Electric Railway to Hull, Aylmer, Britannia. Steamers to St. Lawrence River and the Great Lakes, through Rideau Canal. Hotels, Chateau Laurier \$2.00 up (Eur. plan), New Russell \$1.00 to \$3.50 (Eur. plan), Alexandra \$2.50, Carlton, Windsor \$2.00 to \$2.50. Official seat of Governor-General, seat of Federal Government. National Victoria Museum, Parliamentary Library, National Art Gallery, Royal Observatory, Royal Mint, Central Canadian Experimental Farm, (460 acres,) Govt. Fisheries Exhibit, Govt. Archives, Agricultural and Industrial Exhibition and Fat Stock Show of Central Canada. Anglican and Roman Catholic cathedrals, Ottawa University (500 students), Ashbury College for boys, Ottawa Ladies' College, La Salle Academy for boys, Provincial Normal School, collegiate and an excellent public school system. 30 miles of driveway, well laid out, and 2,000 acres beautiful park lands. Many attractive resorts in the district, with all kinds of winter and summer sports. Industries, about 180 factories, including wood products, paper mills, match factories, foundries, cement, carbide, marine gas buoys (only factory in the world), iron works and foundries, mica, clothing, etc., etc. Capital invested over \$50,000,000; about 17,000 hands employed. Alt. 247. Pop. including suburbs, 135,000.

SPECIAL OPPORTUNITIES.—Automobiles, boxes, bags, biscuits, barrels, bottles, clothing, cigars, confectionery, cereals, elevator and mill building machinery, furniture, flour, gloves, paper and kindred products, pottery, roller mill products, rubber and felt goods, shirts, shoes, steel castings, tiles, textiles, woodenware, etc. Water power available within a radius of 60 miles is estimated at 2,000,000 h.p., of which about 75,000 h.p. is at present utilized. Inducements on application. Write the Commissioner Publicity Bureau.

DESCRIPTIONS OF TOWNS

TOWEN SOUND (Grey Co.), port on Georgian Bay, at mouth of Sydenham River, 122 miles n.w. of Toronto, on C.P.R. and G.T.R. S.S. lines to lake ports: Northern Navigation Co., C.P.R., Dominion Transportation Co. Fine, well-protected harbor. Sound is 12 miles long, navigable for largest vessels. Hotels, Queen's, Seldon, Patterson, Hotel and summer resort on beach near town. Churches of all denominations, high and public schools, 1 theatre, public library, 5 banks. Industries: 2 portland cement plants, chairs, nuts and bolts, malleable iron, matches, tables, 2 tanneries, woodenware, baskets, 3 mill machinery, turbine water wheels, wire fences, wire nails, 3 agricultural implements, brewery, 2 bricks, 2 lime, stove plant, 2 furniture, 3 saw mills, confectionery and biscuits, vinegar and pickles, 2 cold storage plants, 3 foundries, 2 sash and door factories, 2 flour mills, oatmeal mill, linseed oil mill, woollen mill. Alt. 585. Pop. *12,555.

NOTE.—Contracts signed for development of hydro-elec. power from Eugenia Falls.

SPECIAL OPPORTUNITIES.—Agricultural implements, organ and piano, carriage and furniture, boot and shoe, hardware, bosier, whitewear factories, shipbuilding, any manufacture of wood or iron, grain elevators. See illus. Advt. Write Chairman Industrial Committee.

PALMERSTON (Wellington Co.), 78 miles from Toronto, a divisional point on G.T.R. Hotels, Queen's, Imperial, Hess, 1 school, 5 churches, Carnegie library, 2 banks. Industries include malt house, builders' factory, grist mill, trunks and valises, woodenware. Alt. 1,313. Pop. 2,000. Write the Mayor.

PARIS (Brant Co.), on Grand River, on G.T.R. and Grand Valley Elec. Ry. from Brantford, 7 miles; to Galt, 14 miles. Hotels, Arlington, New Royal. 7 churches, school, library, 3 banks. Town owns light, water and sewerage systems. Nat. gas at 50c. with 10% discount. Industries include alabastine works, flour mill, woollen cloth mill, knitting factory, brick yard, International Harvester Co., needles. Neighborhood supplies gypsum and brick clay. Tennis, golf, etc. Alt. 843. Pop. 4,300.

SPECIAL OPPORTUNITIES.—Any manufacture. Inducements on application. Write Sec. Bd. Trade.

PARRY SOUND (Parry Sound Dist.), on Georgian Bay, at mouth of Severn River, 150 miles n. of Toronto. On C.N.R., C.P.R., G.T.R. Steamship connection with Chicago, Sault Ste. Marie and other lake ports. Hotels,

Mansion, Kipling and 2 others. Belvidere, summer only. 7 churches, high, public and ward schools. Court house, registry office, land titles office. Town owns electric light water and sewerage systems. Elec. power, 700 to 1,000 h.p. available; rates 4c. per k.w. for light; \$12.50 per h.p. per ann. for power. Water power, 1,500 h.p. available. 3 banks. Industries include chemicals, spools and buttons, saw mills, (3), planing mills (3), charcoal blast furnace, furniture polish, boats (2). Neighborhood supplies pine, hemlock and abundant hardwoods. A beautiful summer resort, with numerous islands. Good fishing and hunting. Alt. 602. Pop. 3,500.

NOTE.—Explosive works nearby, under construction, will employ over 200 hands.

SPECIAL OPPORTUNITIES.—Manufacture of veneers and furniture, dry docks, marine railways, grain elevators, flour mills, iron and steel works, power development, summer hotel, ferry service, theatre. Water front sites available with interswitching on C.P.R. and C.N.R. Cheap light and power. Liberal inducements on application. Write Sec. Bd. Trade.

PEMBROKE (Renfrew Co.) on Alumette Lake, on C.P.R., main line Transcontinental Ry., branch connections with G.T.R., steam ferry to Alumette Island, steamer to Des Joachims. Hotel, Copland. 9 churches, 6 schools, 2 hospitals. Chief place in Upper Ottawa Valley. Good water supply. Electric power supplied by Pembroke Power Co. 3 banks. Industries include 3 lumber mills, 2 builders' factories, machine shop, stoves, carriages, lumbering tools, woollen mill, 4 saw mills, bricks, mocassins, gloves, leather tannery, incubator factory. The Central Military Camp is situated at Petawawa, 10 miles. Good trout fishing. Alt. 381. Pop. *5 624.

SPECIAL OPPORTUNITIES.—Woodenware, woollen and carding mill. Write the Mayor.

PENETANGUISHENE (Simcoe Co.), on inlet of Georgian Bay, on G.T.R. Hotels, Penetanguishene (in summer), Canada, Palmer. A summer resort. 4 churches, public, separate and high schools, electric light, 2 banks. Industries include 1 tannery, 5 saw mills, 2 builders' factories, launch engines, 2 box works, carriages, foundry, stoves, boat and canoe factory. Alt. 589. Pop. 3,568.

SPECIAL OPPORTUNITIES.—Cement works, woodenware industries. Town offers inducements, good sites, shipment by rail and water. Write the Mayor.

LONDON—



COMMERCE—All civic records show progress, materially increased in past 2 years. Population 56,000. Home market 1,000,000 people. Dominion centre for economic distribution. Educational and ecclesiastical centre. Presents to-day unlimited opportunities for money and enterprise.



RESIDENTIAL—A City of Homes, where life is worth living. Has all the conveniences of a modern city, and attractions peculiarly its own. Picturesque surroundings. Tri-weekly farmers' market. 80 per cent. of industrial workers own their homes.

Read description of London on page 46

GORDON PHILIP, - INDUSTRIAL

For free reports on any

C

RE
ave
tion
toM
pla
sit
rovlin
C

CANADA'S ECONOMIC MANUFACTURING and DISTRIBUTING CENTRE



RECREATION—"The Forest City," famed for the beauty of its parks, avenues and boulevards and for its hospitality. A convenient convention centre, with 4 trunk and 7 branch lines, including city-owned road to London's harbour on Lake Erie—Port Stanley.



MANUFACTURES—241 factories on full time and annually increasing plants. Unusual combined advantages, cheap power, (Hydro), cheap sites, plentiful labor, unsurpassed transportation, competitive water route, fixed assessment, nominal taxes and other inducements.

Read description of London on page 46

line of industry, write

COMMISSIONER, LONDON, ONTARIO

DESCRIPTIONS OF TOWNS

PERTH (Lanark Co.), on Tay River, 40 miles from Ottawa, on C.P.R. Hotels, Hicks, Cecil, and others. 6 churches, public and separate schools, collegiate institute, library, athletic park, light and waterworks. 3 banks. Industries include 2 foundries, sashes and doors, medicines, aerated waters, felt factory, carpets, knitting mills, hoots and shoes. Rideau Ferry Summer Resort, 8 miles, reached by stage and boat. Good farming district. Alt. 432. Pop. 4,300.

SPECIAL OPPORTUNITIES.—Carriage and wagon works. Tax exemption and bonus offered to new industries. Write Sec. Bd. Trade.

PETERBOROUGH (Peterborough Co.), 75 miles n.e. of Toronto, on Otonabee River, on C.P.R., G.T.R. and branches, Trent Waterway. Hotels, Oriental, National, and others. Electric power up to 30,000 h.p. developed. Seat of R.C. cathedral. 17 churches, 9 schools, normal training school for teachers, collegiate institute, public library, 4 parks, 8 banks, elec. light and power. City owns water and sewerage systems. Industries, over 40 factories, including harness, cereal foods, electric machinery and supplies, mining and milling machinery, lumber mills, canoe factories, pork packing, locks, flour mills, shovels, agricultural implements, clothing, carpets, tents and sails, dairy machinery, yarn, steel sashes, bricks and tiles, hutter, aerated waters, furniture, silk labels. Headquarters for Canadian General Electric and Quaker Oats Co. for Canada. The neighborhood supplies iron, gold, silver, lead, mica and various kinds of lumber. Centre of a rich mixed farming and dairying district. Alt. 649. Pop. 22,500.

SPECIAL OPPORTUNITIES.—Iron Industries, industries using wood, tanneries, textiles. Good labor conditions. City offers to manufacturers free sites, with fixed assessment on land without improvements for 10 years. Write City Clerk.

PETROLEA (Lamhton Co.), on G.T.R. Mich. Central Ry. Hotels, Iroquois, Tecumseh, Fletcher. 4 churches, 5 schools, business college, hospital, 2 parks, 3 chartered banks, 1 private. Town owns water and sewerage systems. Elec. light and nat. gas by private co. Industries include nitro-glycerine factory, 2 oil refineries, oil well supplies, 2 elevators factories, fruit and vegetable cannery, 2 hoiler works and machine shops, wagons, automobiles, bridge co., fire extinguishers, large brick and tile works, large butter factory. Centre of oil district. A fine farming country. Alt. 667. Pop. 4,100.

SPECIAL OPPORTUNITIES.—Oil investments, oil prospecting any kind of industry. Town offers free sites and exemption from taxes. Write Sec. Bd. Trade.

PICTON (Prince Edward Co.), on Bay of Quinte, 103 miles e. of Toronto, on C.N.R. Hotels, Royal, Globe, Queen's, Quinte. Daily steamers to Rochester, Kingston, Belleville and all lake ports, bi-weekly to Toronto and Montreal. Public library, 2 parks, 6 churches, public and separate schools, collegiate institute, 5 banks. Industries include foundry, fruit canning, extracts, trunk factory, cheese factory, planing mill, boat building, bricks. Alt. 322. Pop. *3,788. Write Sec. Bd. Trade.

PORCUPINE, on Porcupine Lake, 222 miles n. of North Bay, 479 miles n. of Toronto, on T. & N.O.R., from Kelso 30 miles. An important gold mining camp, composed of 4 settlements, viz., Porcupine, S. Porcupine, Schumacher and Timmins. Hotels, Mulligan, at Porcupine; Connaught, King George, at S. Porcupine; Goldfields, at Timmins. 4 churches, 2 power plants. There are at present 4 shipping mines—Dome, Hollinger, McIntyre and Vipond. Several are being developed. Pop. about 7,000, including floating population. Write Sec. Bd. Trade. See South Porcupine.

PORT ARTHUR (Thunder Bay Dist.), on w. shore of Lake Superior, 1,700 miles from Atlantic, 1,900 miles from Pacific; head of Lake navigation. Judicial centre of district. Customs port of entry. On C.N.R., C.P.R., P.A.D. & W.R. Inter-city electric railway to Fort William (3 miles). All lines of steamers on upper lakes call. Terminals of Inter-lake S.S. Line. C.N.R. Ex., Dom. Ex. Tel. C.N.R., C.P.R. Govt. wireless station. Hotels, Prince Arthur (C.N.R.), Eur. plan; Mariaggi \$2, Algoma \$2, and 13 others. Churches, all denominations; 6 divisional schools, 2 separate schools, collegiate institute, Y.M.C.A., sailors' institute, 3 theatres, public library. Streets all paved and well lighted. Municipally owned street ry., electric power, electric light, waterworks and telephone. 9 banks. Industries include Dominion Govt., C.N.R. and 3 private elevators, total capacity 15,000,000 bushels. Atikokan blast furnaces large shipbuilding co., C.N. coal and ore docks, 4 large lumber cos., wagon works, 3 cold storage plants, sand, lime, bricks, tents and awnings, 2 aerated water, brewery, hardwood finishing factory. The centre of a rich mixed farming district. Health resort for asthma, etc. Assess-

ment in 1906 \$5,000,000; in 1912 \$26,285,452. Alt. 608. Pop. 18,025.

NOTE.—Eastern connections of C.N.R. and rail connection with G.T.P., belt line of street ry., large armories and Dom. Govt. Bldg. will be completed in 1914.

SPECIAL OPPORTUNITIES.—Openings for skilled labor of all kinds. Factory development gives chance for all classes of merchants to establish. City offers free factory sites and 75% concession on taxation. Steam coal costs about \$2.50 per ton. Atikokan Blast Furnace supplies pig iron. 125,000 h.p. in waterfalls, partly developed and selling at \$15 to \$25 b.p. per annum; 3,000,000,000 tons of iron ore in vicinity. Port Arthur is nearest point to Western markets where raw materials can be assembled by water. Write for information and book of views to M. C. Campbell, Chairman Industrial Committee.

PORT COLBORNE (Welland Co.), on Lake Erie, at mouth of Welland Canal, on G.T.R. and Niagara Central Ry. (electric). Hotels, Commercial, McNeal's. Limestone found in neighborhood. Power, electric from Niagara, and natural gas. Good harbor, depth 22 ft., large docking facilities, 2 banks. Industries include planing mill, brewery and malting house, large flour mills, Govt. elevator, coke works, cement works, grist mill, Humberston Summer Resort Club nearby. Alt. 580. Pop. *1,624.

NOTE.—Pig iron and furnace factory in construction.

SPECIAL OPPORTUNITIES.—Steel and iron industries. Write the Mayor.

PORT DALHOUSIE (Lincoln Co.), on Lake Ontario, at entrance to Welland Canal, on G.T.R. and Niagara Central Ry., 4 miles to St. Catharines. Electric cars to Niagara and St. Catharines. 2 daily steamers to Toronto in summer. Hotels, Austin, Wellington, Lincoln. 3 churches, 2 schools. Industries, 1 rubber factory, 1 ship yard, 1 Government gate yard, 1 coal dock elevator. Alt. 249. Pop. *1,170.

SPECIAL OPPORTUNITIES.—Lumber yard, blacksmith. Write Sec. Bd. Trade.

PORT HOPE (Durham Co.), on Lake Ontario, 60 miles e. of Toronto. On G.T.R., C.N.R., C.P.R. Steamer bi-weekly to Toronto and Montreal; to Rochester daily. Fine harbor. Hotels, Queen's, St. Lawrence Hall. Seat of Trinity College School for boys, 150 pupils; central and 2 primary schools, 6 churches, library, 2 parks, opera house. Town owns water and sewerage systems. Street

lighting by private co. 3 hanks. Industries include preserving and canning, enamelware, iron sewer pipe and connecting iron works, plumbers' supplies, tanneries, foundry, file factory, flour mills, pottery and red brick plant, planing mill, machine shops, large greenhouses, carriage and implement factories, ruhher and leather factory, wooden and steel mats, leather shoe laces. Good fruit-farming district. Alt. 265. Pop. *5,089.

SPECIAL OPPORTUNITIES.—Manufacture of brass goods, automobiles, malleable iron. Abundant elec. power at \$12 to \$25 per h.p. Erection of mechanics' houses. Town offers free sites and tax exemptions. Write Sec. Bd. Trade.

PORT PERRY (Ontario Co.), on Lake Scugog, 43 miles e. of Toronto, on G.T.R. Hotels, Sebert, St. Charles. Public and high schools, 5 churches, 2 banks. Town owns electric light and water systems. Industries: Evaporator, lumher and flour mills. Good duck and wild goose shooting and fishing. Alt. 829. Pop. 1,215.

SPECIAL OPPORTUNITIES.—Canning factories. Bonus and tax exemptions to new industries. Write Town Clerk.

PRESCOTT (Grenville Co.), on St. Lawrence River and C.P.R. and G.T.R., 12 miles e. of Brockville. Hotels, Daniels, Alexander, Revere. Foot of lake navigation on St. Lawrence River, and port of call of all boats; car ferry to N.Y. Cen. Ry., summer and winter, at Ogdenshurg. 4 churches, public, high and separate schools, opera house and public library, 2 banks. Industries include emery wheels, caskets, creamery, distillery, grain elevator (cap. 1,000,000 hushels), planing mill, hrewery, veneer, paper etc. Government marine works are situated here. Alt. 247. Pop. *2,801.

SPECIAL OPPORTUNITIES.—Branch factories of American firms. Town has direct car ferry connection all the year with U.S. railways, and large undeveloped power. Factory on C.P.R. track and brick yard plant for sale. Inducements on application. Write Sec. Bd. Trade.

PRESTON (Waterloo Co.), on G.T.R. and C.P.R. Visited for its mineral springs. Electric lines to Berlin and Galt, Hespeler, Paris, Brantford. Hotels, Kress, Del Monte, and 3 others. 5 churches, good schools, 3 parks, library. Town owns elec. light and power, water and sewerage systems. Industries: woodworking machinery, office, school and household furniture, cigars, stoves and furnaces, electric and steam cars, hay machinery, planing mill, metal shingles, hrewery, rolling



Ontario Produces 60 per cent. of the Total Crop of Apples in Canada
See page 6.

mill, woollens, brushes, agricultural implements, hockey sticks, wagons and sleighs, woollen mill, piano players, shoes. 16 factories in all. Alt. 925. Pop. 4,500.

SPECIAL OPPORTUNITIES.—Manufacturers are offered cheap labor, no unions, low taxation, good shipping facilities and hydro-electric power. 150 acres of factory sites between C.P.R. and G.T.R. Tax exemptions, loans offered to new industries. Write Commissioner of Industries.

RAINY RIVER (Rainy River Dist.), 140 miles s.e. of Winnipeg on Rainy River. Div. point of C.N.R. Steamboat to Kenora (87 miles), and Fort Frances (50 miles). Hotels, Canadian Northern, River View, King Edward, Harry's \$1.50. 5 churches, public and separate schools. Electric light, waterworks and sewers. 1 bank. C.N.R. machine shops employ 500 men; Lumber Co.'s saw mills, 400 men; 2 stave mills, 100 men. Good fishing and hunting on Lake of the Woods. Alt. 1,708. Pop. 1,579.

SPECIAL OPPORTUNITIES.—Stove factory, box factory, brick plant, tannery, all industries connected with lumber. Inducements to manufacturers on application. Write Town Clerk.

RENFREW (Renfrew Co.), on Bonnechère River, 8 miles from confluence with Ottawa River. On G.T.R. and C.P.R. main lines. C.P.R. branches to Kingston and Eganville. Hotels, Dominlon, Ottawa \$1.50. 6 churches, public and separate schools, collegiate institute, drill hall, exhib. bldgs., 2 banks. Municipal power house, water and sewerage systems. 2 private elec. light plants. Industries: refrigerators, butter, flour mills, hosiery, machinery, sashes and doors (2), truck scales, bricks and tiles, lime, woollen mill, blankets, foundry, electric supplies. Alt. 416. Pop. 4,500.

NOTE.—New hotel, the Renfrew, \$2.50 to \$3.50, was opened in Jan., 1914.

SPECIAL OPPORTUNITIES.—Woollen factories, foundry, woodenware factory, knitting mills. Tradesmen, carpenters, plumbers, masons, bricklayers, factory hands, domestic servants. 600 h.p. elec. power available at \$20 per h.p., 24-hour service. Abundant water power nearby. Town offers free sites and tax exemptions. Write Sec. Bd. Trade.

RIDGETOWN (Kent Co.), on M.C.R. and Père Marquette Ry. Hotels, Arlington, Anderson. 8 churches, public school, collegiate institute, library. Industries include planing mill, basket factory, cannery, bean packing plant

DESCRIPTIONS OF TOWNS

machinery works. Natural gas at 25c. per M. ft.; 12½c. to manufacturers. Alt. 657. Pop. *1,905.

SPECIAL OPPORTUNITIES.—Woodworking industries, shoe factory, pickle factory, Inducements on application. Write Sec. Promoters' Association.

ROCKLAND (Russell Co.), on Ottawa River, 22 miles e. of Ottawa. On G.T.R., C.N.R. Hotels, Rockland, Atlantic. 3 churches, public, high and 2 separate schools, bank. Light and water by private co. Industries, lumber mills (2), mica, sashes and doors, machine shop, planing mill. Popular tourist resort. Pop. 3,277.

SPECIAL OPPORTUNITIES.—Brick, cement and lime industries. Town offers tax exemptions. Write Town Clerk.

ST. CATHARINES (Lincoln Co.), on G.T.R. and Welland Canal. Niagara, St. C. and Toronto Ry. steamer to Toronto. Elec. ry. to Niagara Falls. Hotels, The Welland (combination hotel and sanitarium) \$2.50, \$3.50, New Murray \$2. Salline springs. 15 churches, 10 schools, collegiate institute, business college. Seat of Bishop Ridley College (Church of England), 150 boys. County bldgs., city hall, armories, library. City owns gas, water and sewerage systems. Elec. light and power and nat. gas by private cos. 10 banks. Centre of Ontario fruit belt. Industries, about 80 in district, including 5 paper mills, flour mill, planing mill, hair cloth, wine, metal works, biscuits, 4 canning factories, incandescent lamps, threshing machines, saws, agricultural hand tools, knitting factory, brewery, mincemeat machines, knives, tannery, builders' factories. Canadian Henley Regatta held annually. Alt. 347. Pop. 14,741.

SPECIAL OPPORTUNITIES.—Building workmen's houses. Any manufacturing industry. Cheap power. Liberal inducements offered. Write Industrial Commissioner or Sec. Bd. Trade.

ST. MARY'S (Perth Co.), on Thames River, 100 miles w. of Toronto, on G.T.R. and C.P.R. Hotels, Windsor, Royal Edward, Ontario and C.P.R. 7 churches, 3 public schools, separate school, collegiate institute and public library, opera house, municipal buildings and large parks. 3 banks. Town owns waterworks and elec. light. Hydro-electric power. 2 newspapers. 15 miles of granolithic works. Industries include 2 builders' factories, agricultural implements, fruit evaporator, creamery vats, wood specialties, \$250,000 cement works, cement products, 2 planing mills, 2 limestone quarries, lime kiln, cold storage.

hooks and eyes, flour mill. Neighborhood supplies sand and stone, cement clay, limestone and lumber. The centre of a very rich general mixed farming, fruit-growing and dairying district. Good boating on Thames River, boat house, Boating Association and grounds. Beautiful scenery. Alt. 1,082. Pop. 3,800.

SPECIAL OPPORTUNITIES.—Industries requiring stone, and farm and dairy produce as raw material, canning factory, condensed milk plant, etc. Furniture and knitting factories, textiles, any woodworking industry, leather industries, cigar factory, button and hardware factories. To manufacturers cheap power and good shipping facilities. Large area for factory sites, abundance of building material, cheap living and moderate rents, good labor conditions, unlimited water supply from artesian wells. Town offers low fixed assessments and other liberal inducements on application. Write Sec. Industrial Commission.

ST. THOMAS (Elgin Co.), on C.P.R., G.T.R., P.M.R., M.C.R., Wahash Ry., 87 passenger trains daily. Elec. ry. to Pt. Stanley, 8 miles; London, 18 miles. S.S. connection by Pt. Stanley with Cleveland, Detroit, etc., and Upper Lakes. Hotels, Grand Central \$2.50, Columbia, Dake \$2, and 3 others. 10 churches, collegiate, 1 high and 5 public schools, 2 daily papers, public park (150 acres), 1 country, 2 social clubs, county buildings, hospital, Old People's Home. 8 banks. Industries include brushes and brooms, shoes (3), biscuits, knitting, handles (2), woodenware (3), 1 steel, 1 brass and 3 iron foundries, 3 large railway shops, planing mills (3), flour mills (2). City owns all public utilities. Surrounded by rich agricultural and fruit belt. Alt. 754. Pop. 16,000.

SPECIAL OPPORTUNITIES.—Automobile factory, steel foundry, all manufactures. 20,000 h.p. electric power at cost. Town offers loans, free sites and tax exemptions. Write for free pamphlet to Sec. Bd. Trade.

SANDWICH (Essex Co.), adjoining city of Windsor, on Detroit River, opposite Detroit, Mich. On Essex Terminal Ry. (freight), connecting with C.P.R., G.T.R., Wahash, Pere Marquette, Michigan Central Rys. Electric rys. to Windsor, Tecumseh (12 miles); Essex, Belle River, Kingsville and Leamington (40 miles). Direct S.S. connection with all lake ports. Hotels, Vendome, Royal Oak, Dominion. 3 churches, public and separate schools, Assumption Coll. for boys (R.C.). 2 banks. Dominion fish hatchery. Electric power, \$30 per h.p. up. Natural gas. Town owns water and sewerage systems. Industries, fur robe factory, salt and heavy chemicals (only fac-

DESCRIPTIONS OF TOWNS

tory of its kind in Canada), canning, wine, bricks, lumber, 2 coaling docks for steamers. Neighborhood supplies salt. The centre of a rich mixed farming and tobacco-growing district. Many peach orchards and vineyards (see "Wine" under Agriculture). A good golf and country club. Pop. about 3,000.

NOTE.—U.S. Steel Corporation commenced work on \$20,000,000 plant in October, 1913. Buildings will cover over 1,100 acres, making Sandwich the second largest steel centre in America. A large electric power station is under construction.

SPECIAL OPPORTUNITIES.—Any industry using steel and iron. Automobile factory, farm implements, etc. Passenger ferry across river. Building mechanics' houses (large acreage vacant at low price). To new industries, excellent shipping facilities by rail and water, 2 miles of river front available for factory sites, tax exemptions and other liberal inducements. Cheap power, natural gas rates 10c. per M. ft. up. Good labor conditions. Write Pres. Bd. Trade.

SARNIA (Lambton Co.), at mouth of St. Clair River, on Lake Huron, on G.T.R., Père Marquette Ry. Steamers to points on Lakes Huron and Superior. Hotels, Vendome, Belle Chambre. 4 churches, public and high schools. Town owns water and sewerage systems. Elec. light and power by private co. Nat. gas. 4 banks. Industries include lumber mills, woodworking, stoves, bridge works, threshers, oil refinery, salt works, saw mill, cannery, jams, cream separators, brass goods. The town has two miles of water front, at any point of which boats can make dock safely. Neighborhood supplies petroleum and salt. Alt. 587. Pop. 10,800.

SPECIAL OPPORTUNITIES.—Iron or steel industries, ship-building, saw mills, elevators. Cheap freights to Northwest, and cheap coal. Write Sec. Bd. Trade.

SAULT STE. MARIE, on St. Mary's River, connecting Lakes Superior and Huron. 440 miles n.w. of Toronto, 350 miles n. of Detroit, Mich. On C.P.R. and Algoma Central and H.B. Ry. S.S. connection with all Great Lake ports. Hotels, International, Algonquin and 2 others. 7 churches, schools: 1 high, 1 technical, 6 public, 3 separate. Federal building, library, park. City owns sewerage system. Light and water by private co. Elec. power. 7 banks. Industries include Algoma Steel Corporation, bricks and tiles, Alg. Cent. Ry. car shops, wholesale produce, fish, tar and chemicals, paper, elec. power

foundry and machine shop, trap rock, brewery, 5 wholesale houses. Neighborhood supplies iron, copper, silver, gold and lumber. Good fishing and shooting. Golf and country club. Pop. 13,100. Pop. of adjoining Municipality of Steelton, 4,200.

SPECIAL OPPORTUNITIES.—Grain elevators, flour mills, tanneries, industries using iron ore, pig iron or steel, wood-working, boots and shoes, furniture, farm implements, saw mills, boxes, sashes and doors, cars, car wheels, machinery and tools. Good labor conditions. Inducements on application. Write Sec. Bd. Trade.

SEAFORTH (Huron Co.), 113 miles n.w. of Toronto, on G.T.R. Hotels, Commercial, Queen's. 5 churches, separate and public schools, collegiate institute, public library, 3 parks, 2 banks. Industries include furniture, engines and threshers, leggings and gloves, staves and bolts, sashes and doors, saw mill, grist, flour, oatmeal and flax mills, cooperage, tannery, aerated waters, apple evaporator, creamery, pottery, brick and tile yards. Hydro-electric power. Neighborhood supplies salt, hardwood, sand and clay for brick and tile works. The centre of a very rich mixed farming and fruit-growing district. Pop. (including suburbs) 3,500.

SPECIAL OPPORTUNITIES.—Any industry, particularly those using farm and dairy products, canning factory, creamery and cheese factory, knitting, boot and shoe, and furniture factories, packing plant, foundry. Cheap power, good labor conditions. A medium-sized brick factory available, formerly operated as woollen mill, particularly suitable for any of the above industries. To bona-fide industries town offers free sites, tax exemptions and other inducements on application. Write Sec. Bd. Trade.

SIMCOE (Norfolk Co.), on G.T.R. and Wabash Railway, connecting with C.P.R. Elec. ry. to port Dover on Lake Erie 7 in.; and Brantford. Hotels, Battersby, Melbourne, Norfolk, Queen's. 6 churches, high and public schools, Carnegie library, fine natural park. Town owns water and sewerage systems. County rural telephone connection. Elec. light, nat. gas, elec. power. Industries include 2 clothing, 2 pickle, cannery, cans, evaporator, color printing, tannery, steam tugs, saw mill, seeds, creamery, woollen mills, flour mill. Good duck shooting. The centre of a very rich fruit and dairy district. Pop. 4,000.

SPECIAL OPPORTUNITIES.—Manufacture of boxes, bricks and tiles, cigars, implements, carriages, woodenware.

DESCRIPTIONS OF TOWNS

carpets, ropes, binder twine, paper, tin plate, soap, furniture, glass, shoes, gas engines, rubber goods, brass, leather goods. Foundry and machine shop. Industries farm and dairy produce as raw material. To manufacturers, excellent shipping facilities, and cheap power from natural gas, at \$15 per h.p. per annum. Immunity from labor troubles. Free factory trackage sites, low fixed assessments and other liberal inducements on application. Write Sec. Bd. Trade.

SMITHS' FALLS (Lanark Co.), on Rideau River and Canal, 45 miles s. of Ottawa, 50 miles n.e. of Kingston, on C.P.R., C.N.R. Hotels, Rideau, Russell and 3 others. 5 churches, public school, collegiate institute. Town hall, free library, market, park, elec. light. Town owns water and sewerage systems. 800 h.p. elec. power, 1,000 h.p. water power available, 4 banks. Industries: farm implements, malleable castings, stoves, ploughs, bricks, sashes and doors, grist mill, 3 wholesale houses. Summer resorts at Rideau Lake (7 m.), tennis, golf, etc. Alt. 423. Pop. 7,000.

SPECIAL OPPORTUNITIES.—Cigar factory, hardware store, any industry employing female labor. Liberal inducements on application. Write Sec. Bd. Trade.

SOUTH PORCUPINE (Temiskaming Dist.), 450 miles n. of Toronto, on T.&N.O.Ry. Can. Ex., Dom. Ex. Hotels, Connaught, King George \$2.50 to \$3.00, and three others. 4 churches (R.C., Pres., Episc., Meth.), public school, court house and jail, electric light and power, sewer and water systems, fire hall, 5 banks, foundry, Gen. Electric Co., Canadian Rand Co., machinery co., stores of all kinds. The business centre of the gold mining district, employing 5,000 men. Customs house clearings about \$250,000. Silver, platinum, nickel and iron also found. Fishing and hunting. Pop. 3,000.

SPECIAL OPPORTUNITIES.—Small custom mill for shipments of ore, brick plant, pulp and saw mills. Electric power, \$30 per h.p. per ann., on 3 years' contract. 20,000 h.p. water power available. Good wages for skilled and unskilled labor. Write Pres. Bd. Trade.

STOUFFVILLE (York Co.), on G.T.R., 25 miles n.e. of Toronto. Hotels, Mansion House, Queen's. Public and high schools, park. Industries, saw mill, telephone company, rattan furniture, carriages, electric light, machine shop, vinegar and pickling plant, sash and door factory, chopping mill, large greenhouses. Good waterworks. Alt. 892. Pop. *1,029. Write Pres. Bd. Trade.

STRATFORD (Perth Co.), 88 miles w. of Toronto, a div. point on G.T.R., 6 lines enter. Hotels, Windsor, Albion. 12 churches, 6 public schools, collegiate institute, Prov. Normal School, business college, 2 parks, 6 banks. City owns light, water and sewerage systems. Industries: 60, including G.T.R. locomotive repair shops, wire fences, carriages, furniture, threshing machines, flour, biscuits and candy, boots and shoes, cordage, bricks and tiles, chairs, music cabinets, woollens, agricultural implements, pork packing, ladders, bay forks, dairy supplies, brewery, rattan furniture, corrugated drain pipe, flour mill machinery, desks, racing sulkies and road carts, bridge and iron works, clothing, office specialties, upholstered furniture, steel bed springs, piano strings, harness, specialties, grain picklers, knitted goods, traction engines, cigars, hoops and staves, leather gloves and mitts. Pop. 16,000.

SPECIAL OPPORTUNITIES.—All woodworking industries. Bonds of bona-fide industries guaranteed by city. Free sites and low fixed assessments. Niagara power. Labor conditions good. Write Sec. Bd. Trade.

STRATHROY (Middlesex Co.), on Sydenham River and G.T.R., C.P.R. 6 miles south. Hotel, Queen's, American. 3 chartered and 2 private banks. Industries include 1 wood-turning, 2 builder's factories, 2 flour and grist mills, cannery, cheese and butter factory, 2 furniture factories, woollen mill, stoves, 1 egg packing establishment, 1 upholstering factory, 1 cold storage. A first-class agricultural and dairying country. Neighborhood supplies hard and soft woods. Alt. 744. Pop. 2,821.

SPECIAL OPPORTUNITIES.—Town offers inducements to factories on application. Write Sec. Bd. Trade.

STURGEON FALLS (Nipissing Dist.), on Lake Nipissing, on C.P.R. Hotels, Kirkup, Windsor, St. Louis. 4 churches, public, separate and model schools, 2 banks, newspaper. Industries, large pulp and paper mills, cement blocks, soda water, bricks, 1 saw mill, planing mill, electric light and power company. Glass sand nearby. Distributing centre of a rich mixed farming district. C.N.R. expected. Big game and fish plentiful. Starting point for French River and w. arm of Lake Nipissing tourist routes. Daily steamers. Alt. 685. Pop. 4,000.

SPECIAL OPPORTUNITIES.—Box factory, veneer mill, furniture factory, stave factory, glass works grist mill, smelter, boat builder, foundry and machine shop, wood-working machinery, woollen mill, biscuit and confectionery works. Water power, 22,000 h.p. can be developed

from Sturgeon River. To new industries town offers free sites, fixed assessments and other inducements. Write Sec. Bd. Trade.

TSUDBURY. (Sudbury Dist.), county town, on C.P.R. main line (div. point) and 5 converging branches; on C.N.O.R. (2 branches) and Algoma Eastern Ry. 33 passenger trains daily. Dom. Ex., C.N.R. Ex. Tel. C.P.R., C.N.R. Hotels, Balmoral, King Edward \$2.50, and 4 others. 5 churches, 2 separate schools, 2 public, high school (Govt. School of Mines in connection), Jesuit College, waterworks, electric light and power, court house, gaol, registry office, 2 hospitals, 3 newspapers, opera house, skating and curling rinks, 6 banks. Industries: Planing mills (5), bricks (2), sashes and doors (4), cement blocks, brewery, soda water (3), flour mill, pickles, wholesale cold storage (2), candy, compressed feed, foundry and machine shops. Executive offices of 6 wholesale firms, 4 railway construction cos., and 25 lumber cos. Building permits (18 months), \$1,250,000. Centre of nickel district. See under Mining—"Nickel" and "Iron". Wages from nickel industry paid in Sudbury district \$2,500,000 annually. Alt. 850. Pop. (1913 Assessment Census), 6,743.

NOTE.—Dominion Nickel and Copper Co. (Rothschild Interests) \$5,000,000 smelter, and Mond Nickel Co.'s new \$3,000,000 smelter recently completed. Franchise granted for interurban elec. ry. Construction to begin in spring of 1914.

SPECIAL OPPORTUNITIES.—Industries and wholesalers of all kinds. Building residences. Shipping facilities on 7 lines of railways. Cheap power, 25,000 h.p. developed. Abundant iron ore ready for smelter. Town offers fixed assessments and other liberal inducements. Write Sec. Bd. Trade.

THESSALON (Algoma Dist.), on n. shore of n. channel of Georgian Bay, 50 miles from Sault Ste. Marie, on Thessalon and N. Ry. from junction of C.P.R. Steamers to Owen Sound and Collingwood, Soo and Mackinac Island. Hotels, Moore, Queen's, Thessalon. 4 churches public school, 1 private bank, 1 chartered bank. Industries, bricks, 4 saw mills, 2 planing mills, woollen mill, smelter, electric light and waterworks. Alt. 599. Pop. *1,945. Write Sec. Bd. Trade.

THOROLD (Welland Co.), on Welland Canal, on G.T.R., Niagara, St. Cath. & T. Elec. Ry. to Niagara Falls (9 m.), St. Catharines (4 m.), Port Dalhousie (7 m.), Hotels.

City, Welland, Summit. 4 churches, high, separate and 2 public schools, library, fire hall, 3 banks. Town owns electric light, water and sewerage systems. Abundant electric and water power, nat. gas. Industries include pulp board factory, saw mill, paper mill, 2 flour mills, 4 pulp mills, cement works, asbestos pipe covering factory, foundry and machine shop, knitting factory. In the neighborhood are stone quarries and natural cement. Alt. 526. Pop. 3 000.

SPECIAL OPPORTUNITIES.—Cheap power. Town offers fixed assessment to new industries. Write Sec. Bd. Trade.

TILBURY (Kent Co.), on C.P.R., M.C.R. Hotels, International, Empire, Balmoral. 4 churches, public, separate and continuation schools, 2 banks. Town owns water and sewerage systems. Industries: handle factory, grist mill, planing mill, cannery, flax mills, automobile top factory. A good farming district, which supplies timber, crude oil, flax, tobacco, fruits and vegetables for canning. Power supplied by nat. gas and electricity. Alt. 586. Pop. 2,000.

SPECIAL OPPORTUNITIES.—Nat. gas at 15c. per M. cubic ft. for industrial use. Inducements to new industries on application. Write Sec. Bd. Trade.

TILLSONBURG (Oxford Co.), on G.T.R., C.P.R., N.Y.C. (M.C. Div.) Wabash Rys. Hotels, Arlington, Imperial, Royal, 5 churches, public and high schools, 3 banks. Industries include robes and mitts, gasoline engines, machinery, grist mill, pork packing, bricks, 2 foundries, hand harvest tools, flour mill, oatmeal mills, condensed milk, carriage works, show case factory, planing mills, linen goods. Surrounded by rich dairying and fruit district, supplying timber and brick clay. Alt. 757. Pop. *2,758.

SPECIAL OPPORTUNITIES.—New industries can obtain very cheap coal and low freight rates, free sites, tax exemptions, and possibly loan. Write Sec. Bd. Trade.

TORONTO, (York Co.), on Lake Ontario, incorporated as a city in 1834, on G.T.R., C.P.R. and C.N.O.R. Capital of Province of Ontario. Seat of Ontario Government and Parliament Buildings; Toronto University, about 4,000 students. Financial and commercial centre. Publishing centre of Canada. Hotels, King Edward \$3.50 up, rooms \$1.50 up; Queen's \$3 up, Prince George \$3 up, rooms \$1.50 up, Arlington \$2.50 to \$3, Walker House \$2.50 up, rooms \$1.50, Palmer \$2 to \$3, Iroquois, Elliott House, Mossop's, rooms \$1.50. Industries, over 900 factories, including foundry products, wood producers,



Hay Forms in Value about One-third of the Field Crops. See page 5.

leather, clothing, agricultural implements, distillery, breweries. Number of hands employed in factories, 65,000; capital invested in manufactures, \$75,000,000. Annual pay roll of manufacturers, \$20,000,000. Electric power from Niagara will be supplied to manufacturers. Area of city in 1914, about 33 sq. miles. Bank clearings, \$2,181,281,577 in 1913. Assessment for 1914, \$513,206,000. Rate of taxation, 1913, 19½ mills. Gross debt on 31st Dec., 1913, \$61,118,000. Net debt, \$48,312,000. Building permits, 1913, \$27,038,624. In 1913 the St. Ry. carried 151,237,000 persons. Alt. (at City Hall) 296. Pop. Dom. Census, 1911, 376,240, Assessor's estimate, 1913, 445,575. For industrial opportunities write Assessment Commissioner.

TRENTON (Hastings Co.), at head of Bay of Quinte, at mouth of Trent River, 100 miles e. of Toronto. Southern terminus of Trent Valley Canal. On C.N.R. (div. pt.). C.P.R. (div. pt.), G.T.R. and C.O.R.; on R. and O., Ont. and Quebec, and Bay of Quinte Navigation Cos. S.S. communication with all lake ports. Daily stage to Belleville. Hotels, Gilbert, King George and 4 others. 6 churches, public (2), separate and high schools. Electric power. 3 banks. Industries include Trenton Water and Power Co., Weddell Dredging Co., Creosoting Co., iron concentrator, huttons, cooperage, account registers, baby carriages, non-slipping horseshoe devices, foundry, cold storage, 2 clothing, 2 sashes and doors, paper mills, wholesale lumber, cannery, sprays, evaporators, heverages. The neighborhood supplies iron, limestone and many varieties of lumber. Splendid fishing. Pop. 5,000.

NOTE.—\$35,000 voted for extending sewerage system. Trent Valley Canal will be operated in 1914.

SPECIAL OPPORTUNITIES.—Iron and paper industries. Excellent transportation and power facilities. 35,000 h.p. electric power available, rates \$12 to \$20 per b.p. Good labor conditions. Free sites and fixed assessments to new industries. Write Sec. Bd. Trade.

TWEED (Hastings Co.), on Moira River, 55 miles e. of Peterboro. On C.P.R. and Bay of Quinte Ry. Hotels, Huyck's, Queen's. 4 churches, public and separate schools 2 banks. Industries, flour mill, foundry and machine shop, bubs and bent work, steel troughs, sashes and blinds, evaporator. Electric light. Pop. 1,320.

SPECIAL OPPORTUNITIES.—Elec. power, 10c. per k.w. Tax exemptions offered. Write Clerk of Village.

UXBRIDGE (Ontario Co.), G.T.R., B.T. Co. Hotels, Mansion, Bascom, Arlington. Good schools, public

library, electric lighting, artesian wells. Industries include tannery, chopping mill, flour and oatmeal mills, elevator, planing mill. Alt. 886. Pop. 1,433.

SPECIAL OPPORTUNITIES.—Boots and shoes, woollen mill, creamery, cheese factory, brick factory for sale. Tax exemptions and free sites offered. Write Town Clerk.

VANKLEE HILL (Prescott Co.), 57 miles e. of Ottawa, 63 miles w. of Montreal, on C.P.R., G.T.R. Hotels, (unlicensed) Dominion, Grand Central. 5 churches, public and separate schools, collegiate institute, agric. bldg., rink, gymnasium. Elec. light, 2 banks. Industries, pumps, saw mills, sashes and doors, carriages, foundry, roller mill. Alt. 272. Pop. 1,700.

SPECIAL OPPORTUNITIES.—Iron works, clothing, shirts, gloves, boots. Liberal inducements. Write Town Treasurer.

VICTORIA HARBOR (Simcoe Co.), on Georgian Bay, 100 miles n. of Toronto, on G.T.R. and C.P.R. Hotel, Royal Victoria. 4 churches, 2 public schools, park, 1 bank. Electric light and power. Large lumber industry. Pop. 1,800. Write Clerk of Municipality.

WALKERTON (Bruce Co.), 120 miles w. of Toronto, on G.T.R. and C.P.R. Hotels, Hartley, Queen's. 6 churches, public, separate and high schools, business college, library. Elec. light and power, water and sewerage systems, 2 banks. Industries: saddlery, hardware, steel goods, furniture factories (2), biscuits, sashes and doors, bobbins, foundry and Machine shop, roller mill, flour mill, egg and butter factory. Alt. 931. Pop. 3,000.

SPECIAL OPPORTUNITIES.—Cheap power. Town offers tax exemptions and free water to new industries. Write Sec. Bd. Trade.

WALKERVILLE (Essex Co.), on Detroit River, directly opposite Detroit, Mich.; on G.T.R., Wabash, terminus of Père Marquette, Essex Terminal Ry., connecting with C.P.R., Michigan Central and W.E. and L.S. Rys. Elec. rys. to Windsor (1½ miles), Sandwich (3 miles), Tecumseh (6 miles), and Amherstburg (15 miles). Ferry to Detroit. Direct S.S. connections with all lake ports. Hotels, Crown, Reid's, Exchange. 4 churches, public and separate schools, public library. 4 banks. Elec. light, waterworks and sewerage. Hydro-electric power, lighting rates 15c. per k.w., less 20%. Natural gas, domestic rates 30c. per M ft. Industries include Hiram Walker's distillery, Parke Davis & Co., varnish and paints (2), automobiles (2), automobile bodies, automobile trimmings, engines and valves bridge works, drop forgings, weather

strips, hones, wire fences (3). furnaces, steam fire engines and fire appliances, fly paper, tobacco, clothing (2), cooperage, brewery, drugs, marine engines, asphalt blocks, carriage goods, crucible steel castings, concrete reinforcement, steel stamping works, overalls and shirts (2), dye works, metal stamping works, twist drills, electric welders, lubricators, cement tile machines, valves and hydrants, roofing. A rich district supplying fruit, grain, vegetables and tobacco. Tennis, golf, bowling and yachting. Alt. 588. Pop. 3,500.

SPECIAL OPPORTUNITIES.—Iron and steel industries, automobiles and accessories, building employees' houses. Electric power rates to manufacturers 5c. per k.w., less 20%. Natural gas 12c. per M ft. Excellent labor conditions. Write Sec. Bd. Trade.

WALLACEBURG (Kent Co.), on Père Marquette Ry., boats to Sarnia and Detroit. Electric cars to Chatham. Hotels, Empire, Tecumseh, Montreal, Arlington. 3 banks. Industries: canning, machine shop, knitting mills, glass works, evaporator, brass works, foundry, stocks and barrels, beet sugar refinery, flour mill, planing mill. Alt. 583. Pop. *3,438.

SPECIAL OPPORTUNITIES.—Any line requiring cheap female labor. Good rail and water shipping facilities. Natural gas supplied 10c. to 15c. per M cubic feet. Free sites offered to good concerns. Write Pres. Bd. Trade.

WATERLOO (Waterloo Co.), on G.T.R. Hotels, Lewis, Huetber, Alexander. 6 churches, 2 public and 1 separate schools, 3 banks. Industries include threshing machines, furniture, brooms and brushes, boots and shoes, malt house upholstery, office desks, distillery, buttons, collars and cuffs, flour mill, bricks, brick and tiles, cigars, washing machines, springs, combs, gloves, boxes, interior woodwork, shoddy, brick-making machinery, trunks and bags, barrels, cigar boxes, upholstered goods, brewery and malt factory, tannery. Fine farming district. Alt. 1,056. Pop. *4,360.

SPECIAL OPPORTUNITIES.—A good supply of skilled labor is available for the manufacture of furniture (frames and upholstered goods, office, school and church), general interior fittings, planing mill, sash and door factory, boots and shoes, collars and shirts, and for general foundry. No strikes. Tax exemptions offered, sometimes free sites and loans. Write Sec. Bd. Trade.

WELLAND (Welland Co.), on Welland Canal, on M.C.R., Père Marquette, G.T.R., T.H. & B., Wabash, Ry., Niagara, St. Catharines & Toronto Elec. Ry., and Niagara,

Welland & Lake Erie Elec. Ry. Hotels, Dexter, Mansion and 2 others. 7 churches, public and high schools, business college, county bldgs., hospital, 6 banks. Hydro-elec. light and power. Nat. gas. Town owns water and sewerage systems. Industries include iron and steel, agricultural implements, cordage, cotton, smelting, contractors' machinery, stoves, beds, furniture, iron pipes, overalls, hosiery. Alt. 601. Pop. 6,500; with suburbs, 9,000.

SPECIAL OPPORTUNITIES.—All kinds of factories. Natural gas supplied at 25c. per M ft. to factories. Electricity, \$12 to \$15 per h.p. per annum, 24-hour service. A fine harbor, 20 ft. of water. Write Industrial Commissioner.

WHITBY (Ontario Co.), 30 miles e. of Toronto, on Lake Ontario, with harbor; on G.T.R., C.P.R. Hotels, Windsor, Royal. Seat of Ontario Ladies' College. 5 churches, public and high schools, 2 banks. Town owns water-works and elec. light. Industries include 2 elevators, horse blankets, whips, etc., tannery, saddlery and harness hardware, planing mill, electric power, machine shop, Alt. 276. Pop. 2,429.

NOTE.—Provincial Asylum in course of erection. Toronto & Eastern Electric Ry. will enter in 1914.

SPECIAL OPPORTUNITIES.—Industries of any kind. Inducements on application. Write Town Clerk.

WARTON (Bruce Co.), on Georgian Bay, 140 miles n.w. of Toronto, on G.T.R. S.S. of Northern Nav. Co. Hotels. Arlington, Pacific. 5 churches, public and high schools, 2 banks. Town owns water and sewerage systems. Elec. light by private co. Industries include Portland cement, planing mill, furniture (2), hardwood floors, bed frames, flour mill, lumber yards (4), butter. Pop. 2,300.

SPECIAL OPPORTUNITIES.—Foundry and machine shop, knitting factory. Large vacant factory suitable for furniture industry offered by town on liberal conditions. Electric power \$25 per h.p. Write Sec. Bd. Trade.

WINDSOR (Essex Co.), on Detroit River, immediately opposite Detroit, on C.P.R., M.C.R., G.T.R., Wabash, Pere Marquette. Elec. Ry. to Leamington (39 m.), Tecumseh (7 m.), Amherstburg (18 m.). On line of all Canadian S.S. on Great Lakes. Hotels, Crawford, British American, King George. 14 churches, 7 public schools, 4 separate, collegiate institute, 7 banks. Town owns light, water and sewerage systems. Industries include large salt works, wire fences, tobaccos, cigars, brass goods, brewery.

knitting factory, cabinet shop, asphalt blocks, flour mill, machine shop, duplicating machines, builders' factory paint and varnish, machine works, cornmeal, brushes, paper boxes, bentwood, cement bricks, foundry, overall factory, manufacturing chemists, pearl button works, 4 automobile factories, cereals, electrical machinery, spring beds, stoves and saw mill machinery. Natural gas available for manufacturing purposes. Limestone and salt found in neighborhood. Alt. 580. Pop. 22,000.

NOTE.—Transmission line for Niagara power under construction.

SPECIAL OPPORTUNITIES.—Iron and steel industries, building houses and stores, automobile factories, foundry, glass factory, salt works, hotel. Natural gas at 12c. per M ft. Electric power from 3c. to 5c. per k.w. New industries offered free water and light, cheap sites, tax exemption. Write Sec. Bd. Trade.

WINGHAM (Huron Co.), on Maitland River, 120 miles w. of Toronto, on G.T.R., C.P.R. Hotels, Brunswick, Queen's. 6 churches, public and high schools, business college, hospital, town hall, park, library. Town owns light, water and sewerage systems. Banks, 3 chartered, 1 private. Industries include planing mill, salt works, flour mill, panel doors, saw mill, furniture, stoves and furnaces, tannery, bricks, gloves and glove leather, carriages, electric power. Alt. 1,044. Pop. about 3,000.

SPECIAL OPPORTUNITIES.—Liberal inducements offered to new industries. Write Pres. Bd. Trade.

WOODSTOCK (Oxford Co.), on G.T.R., C.P.R., electric railway to Ingersoll (10 m.). Hotels, Oxford and New Commercial \$2, Buckingham, New Dufferin \$2, Royal \$1.50. 12 churches, 5 public schools, R.C. school, 1 collegiate institute, commercial college, public library, hospital. Seat of Woodstock College (150 students). Good agricultural district, supplying sand, gravel, brick clay wool, bides, grain. Industries include wagons, 3 machine shops, piano strings, biscuits, furniture, woven wire fence, wheel hubs, furniture castors, farm tools, lumber mill, flour mill, organs and pianos, planing mill, brewery, chipping mill, soaps, stoves, oatmeal, windmills, bentwood for brooms, knitting, shot guns, garden tools, braid edging. Tennis and golf clubs, boating on Thames River. Alt. 958. Pop. 10,091.

SPECIAL OPPORTUNITIES.—Iron industries, boot and shoe factories, shirt and collar factory, electrical supplies, canning, pickling, building mechanics' houses. Write Sec. Industrial Committee.

Agricultural and Fruit Districts

This chapter contains descriptions of some of the leading districts to which immigration is attracted, and regulations affecting Provincial Lands. Accurate descriptions of districts will be received in future editions from the authorities of any county or district desiring to attract immigration.

ESSEX COUNTY. The most southerly portion of Ontario, situate between Lakes Erie and St. Clair, area about 46,000 acres. Land is slightly rolling at south; elsewhere flat, with a slight ridge running north and south. The soil is generally clay loam, with clay subsoil, well drained, and on ridges sandy loam, with gravelly subsoil, suitable for peaches. At base of point Pelee, near Leamington, are 2,800 acres of reclaimed marsh land, with black muck, 1 to 10 ft., and clay subsoil. County is well watered with rivers, creeks, and some artesian wells. Traversed by C.P.R. main line, M.C.R., Pere Marquette and Wahash Rys., and 3 electric lines. Lake steamers call at Windsor, Kingsville and Leamington. There is a good supply of natural gas from wells in the county. Climate is mild, with long growing season free from early and late frosts. Leading crops are corn, oats, tobacco, winter wheat, hogs, sugar beets, peaches, apples, tomatoes, cucumbers, onions, the famous Petite Cote radishes and hot house vegetables. Many American families are migrating here from Ohio and buying up corn lands. Englishmen are acquiring fruit lands. Average price of land per acre: Good peach land, \$125 to \$150; peach land in bearing, \$500; apple land, about \$100; corn land, \$65 up; vegetable land, from \$100 to \$500; sugar beet land, \$65 up; tobacco land, \$100 up; mixed farming land, \$70 to \$125. See sugar beets, fruit farming, grain, tobacco, vegetables, under "Agriculture." See Descriptions of Amherstburg, Essex, Leamington, Sandwich, Walkerville and Windsor. Write to the Warden of Essex County, Walkerville, Ont.

FRUIT DISTRICTS. The commercial cultivation of peaches and grapes extends from Hamilton on Lake Ontario through the Niagara District to the Niagara River, thence westerly along Lake Erie, Lake St. Clair, the southern part of Lake Huron, a district embracing nine counties and over 300 miles in length. Pear and plum orchards are found everywhere in the counties bordering on the Great Lakes and the Georgian Bay. The belt in which apples and berries are grown for market extends

400 miles east and west and 50 to 150 miles north from the southern boundary. The following prices apply in the principal districts from east to west: (a) Along St. Lawrence River, \$40 to \$70 per acre; (b) Ottawa Valley from Prescott to Renfrew Counties, \$30 to \$70; (c) Prince Edward County, where there are 15 evaporators, \$50 to \$100; (d) Lake Ontario Counties, \$40 to \$90; (e) From Port Credit to Hamilton, \$150 to \$400; (f) Niagara District (see special description); (g) The counties bordering Lake Erie and southern part of Lake Huron. To Norfolk and Lambton Counties special attention has been drawn by successful fruit growers, co-operative associations and also land companies who are purchasing and planting large tracts of land for orchard purposes, \$25 to \$100; (h) Georgian Bay and Lake Huron, \$30 to \$70. These prices apply for farms of from 50 acres to 100 acres, and in most cases include buildings. For illustrated literature, write to the Dept. of Agriculture, Toronto.

IMPROVED FARMS. Fifty to a hundred acres can be purchased in the older portions of Ontario at from \$30 to \$100 per acre, the larger price including cost of buildings. A list of farms for sale may be had on application to the Director of Colonization, Toronto.

KENT COUNTY. Land is mostly flat, with a little marshy ground in Dover, Tilbury and Chatham Townships. Soil varies from sandy to black loam and clay. Subsoil of various kinds. Good water supply from numerous springs and artesian wells, 60 to 140 ft. Natural gas is largely used. Good markets throughout the county, served by M.C.R., P.M.R., G.T.R., C.P.R. and Wallaceburg, Lake Erie & Chatham Elec. Ry. Corn is best crop, averaging 100 to 180 bush. per acre. Wheat averages 25 bush., oats 50 to 75 bush., barley 50 bush., roots 10 to 20 tons. Beans, tobacco, sugar beets and all kinds of fruits are grown. Kent Co. apples have won many prizes during the last 10 years, including 1st at Toronto Exh. Pop. 55,995, comprising English, Scotch, Irish, French and a few Germans. Improved farms cost \$50 to \$150 per acre. Write the Industrial Commissioner, Chatham, Ont.

LAMBTON COUNTY. Area 1,000 sq. miles, at the southern end of Lake Huron. Traversed by three railways, with branches running north and south. Population 4,500, of which half is urban. Apples, peaches, grapes and tender fruits are grown commercially, also corn, sugar beets and beans. Winter climate is mild owing to influence of waters of Lake Huron to the north. The

land generally is level and watered by a number of streams. Soil, alluvial clay loam varying from friable to stiffer soils, and overlaid in places by sandy loams, sand and gravel deposits. The county has been well advertised. For illustrated pamphlet, lists of farms for sale, etc., write Sec. Lambton Publicity Association, at Petrolia or Sarnia, Ont.

MIDDLESEX COUNTY. Area 757,683 acres, of which 87 per cent. is cleared. Watered by Thames River and smaller streams. Good soil prevails throughout, varying from deep clay loam, producing grain, to sandy soil, suitable for corn, fruit and vegetables, especially potatoes. Large numbers of horses, sheep, beef and dairy cattle, hogs and poultry are raised. Apples and all kinds of small fruits and vegetables thrive. Of grain, average crops per acre in 1912 were: Fall wheat, 21.3 bush.; oats, 41.5 bush.; barley, 30.9 bush.; peas, 17.2 bush.; corn for husking, 70.1 bush.; corn for silo, 9.96 tons. Bee-keeping is carried on extensively. At the Horticultural Exhibition, Toronto, 1912, all the comb honey put up by the Ontario Beekeepers' Assn. was produced in Middlesex. Several fox ranches have been established recently. The county is served by the C.P.R., G.T.R., Michigan Central, London and Port Stanley, Pere Marquette and Wabash railways, and the London and Lake Erie Electric Line. There are good roads, telephones and rural mail delivery. The city of London and the towns of Strathroy and Parkhill afford good markets in the county. Write Industrial Commissioner, London, Ont.

NIAGARA DISTRICT. Lies along the southwestern shore of Lake Ontario, extending from Niagara to Hamilton, 44 miles. It varies in width from one mile at Hamilton to 14 miles from Niagara Falls to the mouth of the river. The winter climate is milder than in most other parts of Ontario. This is due to the low altitude above sea level (from 320 to 350 ft.), the shelter of the escarpment, which runs from end to end of the district, and the large body of water in Lake Ontario, open all the year round. There about 5,000 acres planted to grapes; 3,500 acres to apples and pears; 7,000 acres to peaches; 200 acres to plums and 1,500 acres to other fruits. There are about 50,000 acres of fruit land as yet unplanted. The district is traversed by the G.T.R., T.H. & B. Ry., and electric railways from Hamilton to Niagara Falls. Steamboat connections with Toronto at Hamilton, Grimsby, Port Dalhousie and Niagara. The Ontario Government has established an experimental farm at Jordan to develop new varieties of

fruit. All fruits are successfully marketed in the Northwest and apples and pears in Europe. Peaches shipped to Great Britain have sold at from 30s. to 60s. a case of from 15 to 20 fruits. One-third of the grape crop is made into wine. There are 3 co-operative fruit growers' associations. Price per acre of peach orchards in bearing, according to age, from \$400 to \$1,000; apple orchards, from \$300 to \$500; vineyards, from \$150 to \$300; unplanted land, sandy loam with clay subsoil suitable for peaches, \$200 to \$400; unplanted apple land, \$50 to \$150; unplanted land suitable for grapes, \$50 to \$150. Social conditions are ideal. Write the Dept. of Agriculture, Toronto.

NORFOLK COUNTY. The land is undulating. Soil is similar to that in Niagara peach belt, sandy loam, some clay loam, generally clay or gravelly subsoil. Watered by numerous streams. Served by G.T.R. (3 lines), Wabash Ry., Michigan Central, T.H. & B. Ry. Leading products: Apples, some peaches, strawberries, small fruits, clover seed, vegetables, especially cucumbers, peppers, cauliflowers, etc., for local pickle factories and canneries. Markets at St. Thomas, London, Woodstock, Simcoe, Brantford, Hamilton, Toronto, all within 85 miles. Average price of improved farms, \$50 to \$150 per acre. Price of bearing apple and peach orchards, \$400 to \$700. This county has lately come into prominence as a fruit district. The Norfolk County Fruit Growers' Association has over 500 members. At the Provincial Fruit Show in Toronto, 1911, and again in 1912, Norfolk County won first prize in sweepstakes for exhibit of boxes of apples, also a great number of first and second prizes. Chestnut and walnut are the prevailing commercial timber. Natural gas throughout county. On shores of Lake Erie are 2 famous duck and snipe preserves and good bass fishing. Write, Jas. E. Johnson, Manager Norfolk Fruit Growers' Association, Simcoe, Ont., or J. E. Smith, District Representative, Dept. of Agriculture, Simcoe, Ont.

New Ontario

NEW ONTARIO. This name has been given to that part of Ontario lying north of the French River and Lakes Huron and Superior. Area 147,000 sq. miles of which 60 million acres is covered with spruce, black pine and poplar. The district has been made world-famous by the nickel deposits at Sudbury, the Cobalt Silver Mines and the Porcupine Gold Fields. It is an attractive field for pros-

pecting (see under "Mining,"). Only the fringe of the mineral belt has been touched. Moose, caribou, bear, beaver, wild duck and partridge are plentiful. From Lake Temagami westward, at the height of land, lies an area of rich agricultural land known as the Great Clay Belt, over 16 million acres in extent. The whole lies in latitude south of the Manitoba wheat fields, the most northerly point being south of Winnipeg. The winters here are cold, but the air is dry. There are no blizzards. Summer lasts from 1st May to October. Mean winter temperature varies from 10 above zero at Port Arthur to 0.4 below zero at Moose Factory; mean summer temperature from 64 at Kenora to 58.2 at White River (see paper on Climate of North Ontario published in Transactions of Canadian Institute, 1911). Wheat, oats and all grain and root crops do well. Wild strawberries, raspberries and blueberries abound. Seeding begins about 10 days later than in South Ontario, but the long period of sunshine per diem induces quicker growth. Late summer frosts are not much more frequent than in the Upper Ottawa Valley. Easy transportation is afforded by a network of rivers and lakes which are full of fish. The region is traversed by the T. & N. O. R. and the C.P.R., while the C.N.R. and the G.T.P. are under construction. There are colonization roads in the districts which are open for settlement. Lumber and mining camps provide a market close at hand for all farm produce at high prices. Fuel can be had for the cutting. In winter money can be made in the lumber, mining and construction camps. The settler can pay for the labor of clearing by sale of pulpwood and lumber off the land. The principal cities and towns in North Ontario are Fort William, Port Arthur, Sudbury, North Bay, Cobalt, Porcupine, Sturgeon Falls, Sault Ste. Marie, Dryden, Fort Frances, Kenora, Englehart, Haileybury, New Liskeard, Charlton, Matheson and Cochrane. It is not the policy of the Government to dispose of large tracts of land. All Crown Lands are subject to settlement duties. (See under Crown Lands.) Free grants are available in Thunder Bay, Rainy River, Sudbury and Wabigoon Districts. In other sections land can be purchased at 50c. per acre. Cleared farms can be obtained at reasonable prices. From all parts of Europe and the United States enquiries are pouring in.

CROWN LANDS. Agricultural lands open for disposal in New Ontario may be obtained by:

(1) **PURCHASE.**—160 acres may be sold to each applicant, who must be a male or sole female, head of a family, or

AGRICULTURAL AND FRUIT DISTRICTS 83

a single man of 18 years. The price is 50c. an acre, payable $\frac{1}{4}$ cash, balance in three annual instalments with interest at 6%. Purchaser must go into actual residence within 6 months of date of purchase; erect a habitable house at least 16 x 20; clear and cultivate 10 per cent. of the area, and reside on the land for three years before patent issues. After the issue of patent another 100 acres may be purchased on like conditions. Proxy regulations permit a purchaser to place a representative on the land to perform settlement duties, but require double the amount of clearance and cultivation.

(2) **FREE GRANT.**—Except in the Temiskaming District, certain lands considered suitable for cultivation and not valuable chiefly for pine timber or minerals may be located as Free Grants. A single man over 18, or head of a family, may locate 160 acres, and the latter may purchase an additional 80 acres at 50c. per acre each. In St. Joseph's Island and the Townships of Bonfield, Calvin, Cameron, Ferris, Mattawan and Papineau in Nipissing District, and Paipoonge in Thunder Bay, a single man may secure 100 acres free, a head of a family may locate 200 acres and buy an additional 100 acres; a single man may locate 100 acres and may swear off for rock and swamp up to 100 acres.

The conditions entitling a Locatee to patent are: (a) Clearing and cultivating 15 acres, of which at least 2 acres must be done each year; (b) erection of a habitable house at least 16 x 20 ft.; (c) continuous residence and cultivation for 3 years after location and thence to the issue of patent. Absence for not more than 6 months altogether in any one year may be allowed if sufficient reason is shown. For full information, forms, etc., write the Land Agents in the various districts.

NOTE

Detailed descriptions of the agricultural districts opened up for settlement in New Ontario will be found in the New Ontario Edition of Heaton's Provincial Booklet Series. Copies can be obtained from the Director of Colonization, Parliament Buildings, Toronto, or the Ontario Government Agent, 163 Strand, London W.C., England.

OWEN SOUND

SOME OF THE LARGEST MANUFACTURERS IN CANADA ARE LOCATED HERE AND ARE DOING WELL

Owen Sound Offers to Manufacturers
COMPETING RAILWAYS—Canadian Pacific and Grand Trunk.

STEAMSHIP COMMUNICATION with Lake Ports. 4 s.s. lines.

CHEAP POWER—Municipally owned Electric, Water and Gas plants.

Good fire protection Abundant pure water

No labour troubles First-class schools

A good, clean, healthy town

Excellent Factory Sites Can Be Obtained at a Low Cost

Read description of Owen Sound on page 54.

Write for full information to

Chairman of the Industrial Committee
OWEN SOUND, ONTARIO

Sterling Bank of Canada

HEAD OFFICE - TORONTO

Branches in Canada

Toronto, Ont.
(8 Branches)

Almonte, Ont.

Alton, Ont.

Anburn, Ont.

Bayfield, Ont.

Bridgeburg, Ont.

Brookdale, Man.

Cornwall, Ont.

Courtright, Ont.

Dungannon, Ont.

Fingal, Ont.

Fort Erie, Ont.

Gilbert Plains, Man.

Goderich, Ont.

Jordan Station, Ont.

Kelwood, Man.

Killaloe, Ont.

Kirkfield, Ont.

Lefroy, Ont.

Mille Roches, Ont.

Monkton, Ont.

Montreal, Que.

North Bay, Ont.

Orangeville, Ont.

Palmerston, Ont.

Port Burwell, Ont.

Port Credit, Ont.

Port Dalhousie, Ont.

Port Stanley, Ont.

Regina, Sask.

St. Catharines, Ont.

Sebringville, Ont.

Shedden, Ont.

Sombra, Ont.

Stevensville, Ont.

Sudbury, Ont.

Tamworth, Ont.

Thornhill, Ont.

Uxbridge, Ont.

Varna, Ont.

Wadena, Sask.

Watford, Ont.

Wellandport, Ont.

Winnipeg, Man.

SEE INSIDE FRONT COVER

ADDRESS

This book can
be mailed as
printed matter
—one lb. (16.)
stamp.
To keep closed
for mailing, use
rubber band or
clip.

