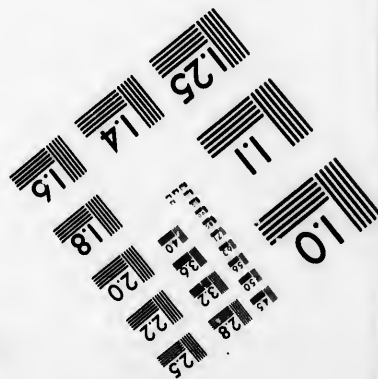
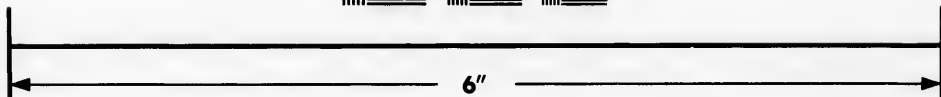
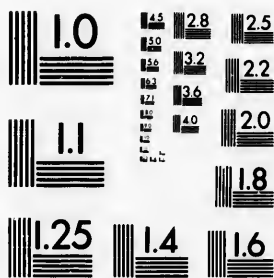


**IMAGE EVALUATION
TEST TARGET (MT-3)**



**Photographic
Sciences
Corporation**

23 WEST MAIN STREET
WEBSTER, N.Y. 14580
(716) 872-4503

**CIHM/ICMH
Microfiche
Series.**

**CIHM/ICMH
Collection de
microfiches.**



Canadian Institute for Historical Microreproductions / Institut canadien de microreproductions historiques

© 1983

Technical and Bibliographic Notes/Notes techniques et bibliographiques

The Institute has attempted to obtain the best original copy available for filming. Features of this copy which may be bibliographically unique, which may alter any of the images in the reproduction, or which may significantly change the usual method of filming, are checked below.

L'Institut a microfilmé le meilleur exemplaire qu'il lui a été possible de se procurer. Les détails de cet exemplaire qui sont peut-être uniques du point de vue bibliographique, qui peuvent modifier une image reproduite, ou qui peuvent exiger une modification dans la méthode normale de filmage sont indiqués ci-dessous.

- Coloured covers/
Couverture de couleur
- Covers damaged/
Couverture endommagée
- Covers restored and/or laminated/
Couverture restaurée et/ou pelliculée
- Cover title missing/
Le titre de couverture manque
- Coloured maps/
Cartes géographiques en couleur
- Coloured ink (i.e. other than blue or black)/
Encre de couleur (i.e. autre que bleue ou noire)
- Coloured plates and/or illustrations/
Planches et/ou illustrations en couleur
- Bound with other material/
Relié avec d'autres documents
- Tight binding may cause shadows or distortion
along interior margin/
La reliure serrée peut causer de l'ombre ou de la
distortion le long de la marge intérieure
- Blank leaves added during restoration may
appear within the text. Whenever possible, these
have been omitted from filming/
Il se peut que certaines pages blanches ajoutées
lors d'une restauration apparaissent dans le texte,
mais, lorsque cela était possible, ces pages n'ont
pas été filmées.
- Additional comments:/
Commentaires supplémentaires:

- Coloured pages/
Pages de couleur
- Pages damaged/
Pages endommagées
- Pages restored and/or laminated/
Pages restaurées et/ou pelliculées
- Pages discoloured, stained or foxed/
Pages décolorées, tachetées ou piquées
- Pages detached/
Pages détachées
- Showthrough/
Transparence
- Quality of print varies/
Qualité inégale de l'impression
- Includes supplementary material/
Comprend du matériel supplémentaire
- Only edition available/
Seule édition disponible
- Pages wholly or partially obscured by errata
slips, tissues, etc., have been refilmed to
ensure the best possible image/
Les pages totalement ou partiellement
obscurcies par un feuillet d'errata, une pelure,
etc., ont été filmées à nouveau de façon à
obtenir la meilleure image possible.

This item is filmed at the reduction ratio checked below/
Ce document est filmé au taux de réduction indiqué ci-dessous.

| | | | | | |
|--------------------------|--------------------------|--------------------------|-------------------------------------|--------------------------|--------------------------|
| 10X | 14X | 18X | 22X | 26X | 30X |
| <input type="checkbox"/> | <input type="checkbox"/> | <input type="checkbox"/> | <input checked="" type="checkbox"/> | <input type="checkbox"/> | <input type="checkbox"/> |
| 12X | 16X | 20X | 24X | 28X | 32X |

The copy filmed here has been reproduced thanks to the generosity of:

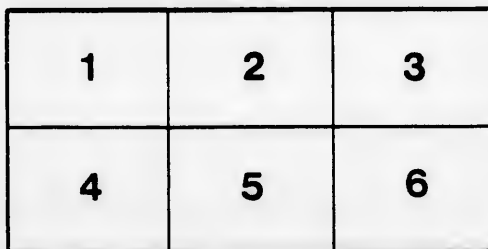
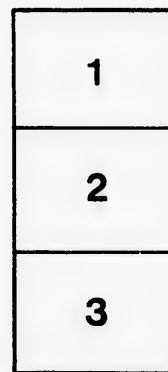
New Brunswick Museum
Saint John

The images appearing here are the best quality possible considering the condition and legibility of the original copy and in keeping with the filming contract specifications.

Original copies in printed paper covers are filmed beginning with the front cover and ending on the last page with a printed or illustrated impression, or the back cover when appropriate. All other original copies are filmed beginning on the first page with a printed or illustrated impression, and ending on the last page with a printed or illustrated impression.

The last recorded frame on each microfiche shall contain the symbol \rightarrow (meaning "CONTINUED"), or the symbol ∇ (meaning "END"), whichever applies.

Maps, plates, charts, etc., may be filmed at different reduction ratios. Those too large to be entirely included in one exposure are filmed beginning in the upper left hand corner, left to right and top to bottom, as many frames as required. The following diagrams illustrate the method:



L'exemplaire filmé fut reproduit grâce à la générosité de:

New Brunswick Museum
Saint John

Les images suivantes ont été reproduites avec le plus grand soin, compte tenu de la condition et de la netteté de l'exemplaire filmé, et en conformité avec les conditions du contrat de filmage.

Les exemplaires originaux dont la couverture en papier est imprimée sont filmés en commençant par le premier plat et en terminant soit par la dernière page qui comporte une empreinte d'impression ou d'illustration, soit par le second plat, selon le cas. Tous les autres exemplaires originaux sont filmés en commençant par la première page qui comporte une empreinte d'impression ou d'illustration et en terminant par la dernière page qui comporte une telle empreinte.

Un des symboles suivants apparaîtra sur la dernière image de chaque microfiche, selon le cas: le symbole \rightarrow signifie "A SUIVRE", le symbole ∇ signifie "FIN".

Les cartes, planches, tableaux, etc., peuvent être filmés à des taux de réduction différents. Lorsque le document est trop grand pour être reproduit en un seul cliché, il est filmé à partir de l'angle supérieur gauche, de gauche à droite, et de haut en bas, en prenant le nombre d'images nécessaire. Les diagrammes suivants illustrent la méthode.

A LIST OF
CHARLOTTE COUNTY PLANTS,
1887.

WESTERN COUNTY PLANTS

A LIST OF

1881

S
W

F

522.13
V984

690
MUSEUM
July
1927

P. W. Wood

Plant Protection
Div.

Dept. Agric. Ontario

A LIST OF

Flowering Plants and Ferns

FOUND IN

Charlotte County, New Brunswick

By J. VROOM

*And other Members of the Botanical Committee of the Natural
History Society of New Brunswick.*

ST. STEPHEN, N. B. :

COURIER STEAM PRINTING HOUSE

1887

fo
ha

of
fa
th
be
ac
th
is

d
w
w

NOTE.

This List is thought to contain the names of most of the Flowering Plants and Ferns found in Charlotte County up to the present time, with the exception of Sedges, which have not been carefully studied, and a few of the Pondweeds and Asters.

The greater part of the County, however, including almost the whole of the Parishes of Saint Croix, West Isles, Pennfield, Lepreaux, Clarendon, and Dumbarton, is still, so far as the writer is aware, unvisited by the plant collector; and, excepting Frye's Island, the site of a summer camp of the Natural History Society, the only sections that have been well examined are in the neighborhood of Saint Andrews and Saint Stephen. The accompanying notes of distribution, therefore, apply chiefly to the southwestern part of the mainland. The probability of having but few opportunities for field work in the future is the only excuse for presenting the list in such an imperfect state.

Prof. Macoun and Prof. Fowler have kindly determined difficult species. Thanks are due to several collectors for notes and specimens; especially to Mr. W. F. Ganong, by whose assistance the list has been much extended. For the defects of proof reading, the writer alone is responsible.

St. Stephen, March, 1887.

J. V.

CORRECTIONS.

- Page 5, second column, line 36. For "*Madicago*," read "*Medicago*."
" " third column, line 58. For "*Amalanchier*," read "*Amelanchier*."
" 7, first column, line 9. For "*oxycanthoides*," read "*oxyacanthoides*."
" " " " " 15. For "*CRASULACEÆ*," read "*CRASSULACEÆ*."
" " " " " 33. For "*Hippurus*," read "*Hippuris*."
" 8, third column, line 11. For "*Anagalis*," read "*Anagallis*."
-
-

L
O
Marit
L
Georg
x, St
F
at the
creas
repor
not s
troub
F
Istan
V
mark
PH
Cle
ve
- V
Th
- pg
An
di
ne
- H
Rau
ac
F
C
ab
sc
= a
re
h
Cop
= tr
Aq
v
Ac
ab
sp

LIST OF CHARLOTTE COUNTY PLANTS.

Occurrence: *a*, abundant; *c*, common; *f*, frequent; *R*, rare in North America; *r*, rare in the Maritime Provinces; *s*, apparently scarce or local in Charlotte County.

Localities: *A*, St. Andrews; *C*, Campobello; *D*, St. David; *E*, Dumbarton; *F*, Dufferin; *G*, St. George; *I*, West Isles; *J*, St. James; *M*, Grand Manan; *P*, St. Patrick; *Q*, Penfield; *S*, St. Stephen; *X*, St. Croix.

REMARKS: *b*, boreal forms, rarely or never found farther south; *d*, disappeared, or rapidly disappearing at the stations named; *g*, in gardens, spreading freely by seed, but scarcely escaped from cultivation; *i*, increasing; *o*, the only station yet known in New Brunswick; *w*, western or New England species not yet reported east of Charlotte County; *v*, railway or ballast plants not likely to be permanent, or garden weeds not suffered to remain; *y*, cultivated plants sometimes lasting for a year or two self-sown; *z*, persistent and troublesome where planted, but not known to be spreading by seed.

Parenthesis marks are used when specimens have not been seen by the writer, except in the case of Frye's Island plants (marked *) which are given on the authority of Mr. Hay and Mr. Brittain.

Where the names have been changed, numbers are given for reference to Prof. Fowler's List of 1885. The marks of uncertainty apply to the determination of species.

| PLATANEROGAMIA. | BERBERIDACEÆ. | CRUCIFERÆ. |
|------------------------------------|----------------------|-------------------------------|
| ANGIOSPERMÆ. | <i>Berberis</i> | <i>Nasturtium</i> |
| RANUNCULACEÆ. | <i>vulgaris</i> L. z | officinale RBr r s |
| <i>Clematis</i> | NYMPHÆACEÆ. | palustre DC |
| verticillaris DC R s | <i>Brasenia</i> | <i>Armoracia Fries</i> z |
| — Virginiana L c | — peltata Pursh f | <i>Cardamine</i> |
| <i>Thalictrum</i> | <i>Nuphar</i> | pratensis L R v od |
| — polygamum Muhl c [4] | advena Ait c | hirsuta L |
| <i>Anemone</i> | <i>Nymphaea</i> | <i>Dentaria</i> |
| dichotoma L * | odorata Ait f | — diphylla Mx s |
| memorosa L s | — var minor Sims j | <i>Sisymbrium</i> |
| — Hepatica L r se | SARRACENIACEÆ. | officinale Scop r s i |
| <i>Ranunculus</i> | <i>Sarracenia</i> | <i>Brassica</i> |
| aquatilis var trichophyllus Gr r s | purpurea L c | <i>Sinapistrum Boiss</i> |
| Flammula var replans Mey | PAPAVERACEÆ. | nigra Koch |
| <i>Cymbalaria</i> Pursh SA(G) | <i>Papaver</i> | <i>Hesperis</i> |
| abortivus L | somniferum L g | matronalis L g |
| sceleratus L r s | — dubium L g | <i>Capsella</i> |
| — acris L a | FUMARIACEÆ. | <i>Bursa-Pastoris Mœnch a</i> |
| repens L | <i>Dicentra</i> | <i>Cakile</i> |
| hispidus Mx | Cucullaria DC s g | Americana Nutt c |
| <i>Coptis</i> | <i>Adlumia</i> | VIOLACEÆ. |
| — trifolia Salisb a | cirrhosa Raf g | <i>Viola</i> |
| <i>Aquilegia</i> | <i>Corydalis</i> | — palmata var cucullata Gr a |
| vulgaris L SA | glauca Pursh f | sagittata Ait G o ? [65] |
| <i>Actæa</i> | <i>Fumaria</i> | odorata L g |
| alba Bigel s | officinalis L SA | blanda Willd c |
| spicata var rubra Ait f | | — var palustriformis Gr ? |
| | | — var renifolia Gr ? [66] |

primulifolia L. A o
 lanceolata L. s (S)AG
 pubescens Ait. s SA d
 canina var Muhlenbergii
 Gr. f. [69]
 - tricolor L. A

POLYGALACEAE.

Polygala
 paucifolia Willd. r s

CARYOPHYLLACEAE.

Saponaria
 officinalis L. fl. pl. z
 Vaccaria L. s d

Silene

inflata Sm
 Armeria L. y
 noctiflora L.

Lycnis

Githago Lam
 vespertina Sibth. s od

Cerastium

viscosum L. c
 arvense L. s A

Stellaria

media Sm. a
 longifolia Muhl. ?
 longipes Goldie. s
 borealis Bigel. r SA
 humifusa Rottb. * rb

Arenaria

lateriflora L. c

Sagina

procumbens L. c
 (nodosa E Meyer. r MG)

Spergula

arvensis L. c

Spergularia

salina Presl
 media Presl

PORTULACACEAE.

Portulaca
 oleracea L. r
 Claytonia

- Caroliniana Mx. s SG

HYPERICACEAE.

Hypericum
 ellipticum Hook
 - perforatum L.
 mutilum L.
 Canadense L.

Elodea

campanulata Pursh. [107]

MALVACEAE.

Malva
 rotundifolia L. r A d
 moschata L.

Hibiscus

Trionum L. r s

TILIACEAE.

Tilia
 - Americana L. s

LINACEAE.

Linum
 usitatissimum L.

GERANIACEAE.

Geranium

pratense L. A g
 - Carolinianum L. f
 Robertianum L. r A

Oxalis

- Acetosella L.
 corniculata var stricta Sav

Impatiens

- fulva Nutt.

ILICINEAE.

Ilex

verticillata Gr. s GS

Nemopanthes

Canadensis DC. f

RHAMNACEAE.

Rhamnus

alnifolia L'Her. s J

SAPINDACEAE.

Acer

Pennsylvanicum L.
 spicatum Lam.
 saccharinum Wang.
 rubrum L.

ANACARDIACEAE.

Rhus

typhina L. a
 Toxicodendron L. f

LEGUMINOSAE.

Medicago

lupulina L.

Melilotus

alba Lam.
 officinalis Willd. s

Trifolium

arvense L. r D(A)
 pratense L.
 repens L.
 hybridum L. f i
 agrarium L. s JS(M)
 procumbens L. s AS(M)

Robinia

viscosa Vent. z

Ornithopus

scorpioides DC. R s x

Desmodium

Canadense DC. s J

Vicia

sativa var angustifolia Ser.
 Cracca L. s

Lathyrus

maritimus Bigel.
 - cluster var myrtifolius Gr.

Amphicarpaea
 monoica Ell. s J

Apios

tuberosa Mench. s JS

ROSACEAE.

Prunus

(pumila L. r G)
 - Pennsylvanica Lf. c
 Virginiana L.
 serotina Ehrh. r

Spiraea

salicifolia L. c
 - tomentosa L. a

Rubus

odoratus L. z
 Chamemorus L. CM(Q) b
 Dalibarda L. a
 - triflorus Rich.
 strigosus Mx.
 villosus var frondosus Torr.
 - Canadensis L.
 hispidus L.

Geum

album Gmel. r s
 strictum Ait. s A(G)
 rivale L. f

Fragaria

Virginiana Duchesne.
 vesca L. s

Potentilla

Norvegica L.
 argentea L. r SEA
 (arguta Pursh. r s)
 palustris Scop. c
 fruticosa L. r JG(M)
 tridentata Sol. f

- Anserina L.
 - Canadensis var simplex T&G
 Gr. c

Agrimonia

Eupatoria L.

Rosa

cinnamomea L. z ?
 micrantha Sm. z
 Carolina L. r
 - lucida Ehrh. [193]
 nitida Willd. s J¹(G)
 (humilis Marsh. x) ?

Pirus

arbutifolia var melanocar-
 pa Hook. c
 Americana DC. f

Crataegus

- tomentosa L.

Amalanchier

- Canadensis T&G. a
 --- var oblongifolia T&G.
 --- var oligocarpa Gr.

SAXIFERAGACE.E.

- Tiarella
 cordifolia L. f
 Mitella
 nuda L
 Chrysosplenium
 Americanum Schw
 Ribes
 oxycanthoides L
 lacustre Poir *
 rubrum var subglandulo-
 sum Max r J [212]
 prostratum L'Her
 floridum L'Her r J

CRASULACE.E.

- Sedum
 acre L. r A
 Telephium L. f zi
 Rhodiola DC. r MG b
 Penthorum
 sedoides L. r s

DROSERACE.E.

- Drosera
 rotundifolia L
 intermedia var Americana
 DC s

HAMAMELACE.E.

- Hamamelis
 Virginiana L. s sex

HALORAGACE.E.

- Proserpinaca
 palustris L. R p o
 Hippurus
 vulgaris L. R jp
 Myriophyllum
 tenellum Bigel r G
 Callitriche
 verna L. c

ONAGRACE.E.

- Epilobium
 spicatum Lam
 palustre var lineare Gr
 coloratum Muhl ?
 Ludwigia
 palustris Ell
 Ceanothera
 biennis L
 [Varieties undetermined.]
 pumila L
 Circea
 alpina L

UMBELLIFER.E.

- Hydrocotyle
 Americana L. a
 Sanicula
 Marilandica L. J

Cienta

- maculata L. c
 bulbifera L. f
 Carum
 - Carui L. s
 Sium
 cicutifolium Gmel. c
 Osmorrhiza
 brevistyllis DC. s
 Ligusticum
 Scoticum L. r s(G)
 Thaspium
 aureum Nutt. r *
 Selinum
 Canadense Mx. r *

Carloplecurum

- Gmelini Ledeb. r * [259]

Pencedanum

- sativum B & Hk

Heracleum

- lanatum Mx

Daucus

- Carota L. ds

Caucalis

- nodosa Huds. s x

ARALIACE.E.

Aralia

- racemosa L. s A
 hispida Vent
 nudicaulis L.
 (trifolia Dec & Pl. r v)

CORNACE.E.

Cornus

- = Canadensis L. a
 circinata L'Her. s A
 sericea L. s J
 stolonifera Mx. a
 alternifolia Lf. s A(G)

CAPRIFOLIACE.E.

Sambucus

- racemosa L.
 Canadensis L.

Viburnum

- lantanoides Mx. c
 - Opulus L.
 acerifolium L. s w
 dentatum L. JS w
 cassinoides L. c
 Lentago L. J w o

Linnæa

- = borealis Gronov. a

Lonicera

- cærulea L. f
 ciliata Muhl

Diervilla

- trifida Mænech

RUBIACE.E.

- Houstonia
 cærulea L
 Cephalanthus
 occidentalis L. J w o
 Mitchella
 - repens L
 Galium
 Aparine L. r *
 trifidum var pusillum Gr
 (= var latifolium Tor G)
 asprellum Mx
 tritorum Mx

COMPOSITE.E.

- Eupatorium
 purpureum L
 perfoliatum L
 Solidago
 latifolia L. s A
 bicolor L
 (macrophylla Pursh. G)
 sempervirens L. s
 puberula Nutt. a
 speciosa Nutt. f
 rugosa Mill. a
 juncea Ait. s ?
 (serotina Ait. v)
 Canadensis L. a
 - nemoralis Ait. a
 lanceolata L. a
 Aster
 macrophyllus L
 radula Ait
 cordifolius L
 sagittifolius Willd. ?
 diffusus Ait
 salicifolius Ait. ?
 Novi-Belgii L. ?
 pumicus L
 umbellatus Mill
 acuminatus Mx
 nemoralis Ait. s(M)

[Probably others; species confused and uncertain.]

Erigeron

- strigosus Muhl
 Canadensis L.

Antennaria

- plantaginifolia Hook

Anaphalis

- margaritacea B & Hk

Gnaphalium

- (polyccephalum Mx. r x) ?
 uliginosum L.

Inula

- Helenium L. s s(rp)

Ambrosia

- artemisiifolia L. f

Rudbeckia

- hirta L. f i

Helianthus
 = *annuus* L. g
tuberosus L. z
Calendula
officinalis L. g
Bidens
 = *frondosa* L. a
Anthemis
Cotula L.
Achillea
Millefolium L. a
Chrysanthemum
leucanthemum L. a
Tanacetum
vulgare L. f
Artemisia
biennis Willd. s i
Tussilago
Farfara L. R AS(Q) i
Senecio
aureus var *Balsamita* T&G
vulgaris L. a
Erechtites
hieracifolia Raf. c
Arctium
 = *Lappa* var *minus* Gr. a
Cnicus
 = *arvensis* Hoffm. a
lanceolatus Hoffm. a
muticus Pursh
Centaurea
nigra L. s A
Cyanus L. y
Cichorium
luteus L. s s
Tragopogon
pratensis L. R s o
Leontodon
autumnalis L. c
Hieracium
Canadense Mx. r G
scabrum Mx. c
Prenanthes
serpentaria Pursh
altissima L. ?
Picris
echioides L. s x
Taraxacum
officinale Weber. a
Lactuca
Canadensis L.
leucophaea Gr. *
Sonchus
oleraceus L.
asper Vill.
arvensis L.

LOBELIACEÆ.
Lobelia
 = *cardinalis* L. f JSD(PE)G w

Dortmannia L. f JDG(M)
inflata L. c

CAMPANULACEÆ.

Campanula
rapunculoides L. r SA z
rotundifolia L. s MG
aparinoides Pursh. r GS

VACCINIACEÆ.

Gaylussacia
dumosa T&Gr. R s
resinosa T&Gr. f
Vaccinium
 = *Pennsylvanicum* Lam. a
Canadense Kalm
corymbosum L. r s
 = *Vitis-Idæa* L. a
Oxycoccus
palustris Pers.
macrocarpus Pursh. c
Chiogenes
hispidula T&Gr. c

ERICACEÆ.

Epigæa
 = *repens* L. f
Gaultheria
 = *pro-umbens* L. c
Andromeda
polifolia L. s
Cassandra
calyculata Don. c
Kalmia
 = *angustifolia* L. a
glaucæ Ait. f
Rhododendron
 = *Rhodora* Gmel. a
Ledum
 = *latifolium* Ait. c
Chimaphila
umbellata Nutt.
Moneses
uniflora Gr. s
Pyrola
secunda L.
elliptica Nutt.
rotundifolia L.

MONOTROPEÆ.

Monotropa
 = *uniflora* L. c
Hypopitys
lanuginosa Nutt. r A d

PLUMBAGINACEÆ.

Statice
Limonium var *Caroliniana* Gr. s

PRIMULACEÆ.

Trientalis
 = *Americana* Pursh. c
Steironema
ciliatum Raf.
Lysimachia
stricta Ait. f
thyrsiflora L. r J
Glaux
maritima L.
Anagalis
arvensis L. r A

OLEACEÆ.

Fraxinus
Americana L.
sambucifolia Lam.
pubescens Lam. r s

APOCYNACEÆ.

Apocynum
androsæmifolium L.

ASCLEPIADACEÆ.

Asclepias
incarnata L.

GENTIANACEÆ.

Gentiana
linearis var *latifolia* Gr. JE
 [n. var.]

Halenia
deflexa Griseb. s
Menyanthes
trifoliata L. s
Limnanthemum
lacunosum Griseb. s

(POLEMONIACEÆ.)

(*Polemonium*)
(caeruleum L. R Q wo)

PORRAGINACEÆ.

Mertensia
maritima Don
Borrago
officinalis L. g AS
Myosotis
laxa Lehm. *
arvensis Hoffm. A
Symphytum
officinale L. s(Q) z

CONVOLVULACEÆ.

Convolvulus
 = *sepium* var *Americanus*
 Sims. f
arvensis L. r s
Cuscuta
Gronovii Willd. s s(G)

SOLANACEÆ.

- Solanum*
nigrum L. r s
Dulcamara L. s z
Physalis
lanceolata Mx s x ?
Datura
Stramonium L. r as d
Hyoscyamus
niger L. s

SCROPHULARIACEÆ.

- Verbascum*
Thapsus L. f
Blattaria L. r a d
Linaria
Canadensis Dum. r s o
vulgaris Mill
Chelone
glabra L. c
Mimulus
ringens L. c
Hyssanthus
gratioloides Benth. s
Limosella
aquatica var *tenuifolia* Hoff
 R s wo

Veronica

- Americana* Schw. s
scutellata L. c
serpyllifolia L. a
peregrina L. r a
arvensis L. s
agrestis L. s
Buxbaumii Ten. s o

Euphrasia

- officinalis* L. s

Rhinanthus

- Crista-galli* L. c

Melampyrum

- Americanum* Mx

OROBANCHIACEÆ.

- Epiphegus*
Virginiana Bart. f

LENTIBULARIACEÆ.

- Utricularia*
vulgaris L. c
intermedia Hayne. r ps
cornuta Mx. s

VERBENACEÆ.

- Verbena*
hastata L. f

LABIATÆ.

- Mentha*
viridis L. z
Canadensis L.

Lycopus

- Virginicus* L.
sinuatus Ell

- Satureia*
hortensis L. y
Hedeoma
pulegioides Pers. c

Nepeta

- Cataria* L. s v
Glechoma Benth

Scutellaria

- lateriflora* L.
galericulata L.

Brunella

- vulgaris* L. a

Leonurus

- Cardiaca* L. g

Lamium

- amplexicaule* L. a o

Galeopsis

- Tetrahit* L. a

Stachys

- palustris* L. f ?

PLANTAGINACEÆ.

Plantago

- major* L. a
maritima L. b ?

decipiens Bar

- lanceolata* L.

Littorella

- lacustris* L. R G o

AMARANTACEÆ.

Amarantus

- retroflexus* L.

CHENOPODIACEÆ.

Chenopodium

- Album* L.
capitatum B & Hk

Atriplex

- patula* var *hastata* Gr. ?

Salicornia

- herbacea* L.

Suaeda

- linearis* var *ramosa* Watson [516]

Salsola

- Kali* L.

POLYGONACEÆ.

- Polygonum*
aviculare L. a
amphibium L. G(QX) [524]

Hartwrightii Gr

- Persicaria* L.

Hydropiper L.

- hydropiperoides* Mx. r s

arifolium L. r s

- sagittatum* L. f

Convolvulus L.

- cilinode* Mx
dumetorum var *scandens*

- Gray. f

- Fagopyrum*
esculentum Manch. y

Rumex

- Britannicus* L. [536]

crispus L. f

- obtusifolius* L. r s

- Acetosella* L. a

(SANTALACEÆ.)

(Comandra)

- (*livida* Richx. r g)

EUPHORBIACEÆ.

Euphorbia

- maculata* L. s o

- Helioscopia* L. s s x

- Cyparissias* L. s SA(G) z

URTICACEÆ.

Ulmus

- Americana* L.

Cannabis

- sativa* L. y

Urtica

- gracilis* Ait

- urens* L. R a

Laportea

- Canadensis* Gaud

MYRICACEÆ.

Myrica

- Gale* L. c

- cerifera* L. s d

- asplenifolia* Endl. f

CUPULIFERÆ.

Betula

- lenta* L.

- lutea* Mx f. c

- alba* var *populifolia* Spach

- papyracea* Ait. c

Alnus

- incana* Willd. a

- viridis* DC. c

Ostrya

- Virginica* Willd. r

Corylus

- rostrata* Ait. f

Quercus

- rubra* L. s

Fagus

- ferruginea* Ait. a

SALICACEÆ.

Salix

- humilis* Muhl

- discolor* var *eriocephala*

- Anders. c

- petiolaris* Sm. r s

- cordata* Muhl

- (*balsamifera* Barr. G) [587]

- rostrata* Kich. [580]

- lucida* Muhl

- (*myrtilloides* L. G)

| | | |
|--|--|---|
| Populus tremuloides Mx <i>a</i> grandidentata Mx <i>f</i> balsamifera var caudicans Gr <i>r</i> J <i>alba</i> L <i>z</i> | roseus Mx <i>c</i> Smilacina racemosa Desf <i>s</i> A trifolia Desf <i>f</i> Maianthemum Canadense Desf <i>a</i> [646] | Symplocarpus foetidus Salish <i>r</i> GJ (Acorus) (Calamus L) |
| EMPETRACEÆ. Empetrum nigrum L <i>s</i> CM(G) <i>b</i> | Allium Schœnoprasum L <i>s</i> G Lilium = Canadense L <i>c</i> | ALISMACEÆ. Alisma Plantago var Americanum Gr <i>f</i> |
| HYDROCHARIDACEÆ. Vallisneria spiralis L <i>s</i> od | Erythronium Americanum Sm <i>s</i> AS (Tofieldia) (glutinosa Willd <i>r</i> G) Oakesia = sessilifolia Wats <i>f</i> [653] | Sagittaria variabilis Engl [Varieties not distinguished.] calycina var spongiosa Eng <i>r</i> JG graminea Mx <i>r</i> D |
| ORCHIDACEÆ. Microstylis ophioglossoides Nutt <i>f</i> Liparis Laselii Rich <i>R</i> A(G) | Clintonia = borealis Raf <i>c</i> Medeola Virginiana L <i>f</i> Trillium = erectum L <i>f</i> cernuum L <i>s</i> erythrocarpum Mx <i>f</i> | NAIADACEÆ. Triglochin maritimum L <i>a</i> Scheuchzeria palustris L <i>r</i> s |
| Corallorhiza innata RBr <i>s</i> multiflora Nutt | PONTEDERIACEÆ. Pontederia cordata L <i>f</i> | Potamogeton natus L Claytonii Tuck hybridus Mx JS <i>w</i> rufescens Schr <i>s</i> o praelongus Wulf pusillus var major Fries <i>s</i> [Probably several other species.] |
| Listera (cordata RBr <i>r</i> G) convallarioides Nutt <i>r</i> A D | XYRIDACEÆ. Xyris flexuosa var pusilla Gr <i>r</i> s | Ruppia maritima L |
| Spiranthes Romanzoffiana Cham <i>f</i> | JUNCACEÆ. Juncus = effusus L <i>a</i> filiformis L Balticus var littoralis Eng ? bufonius L (Gerardi Lois G) tenuis Willd <i>a</i> pelocarpus E Meyer <i>f</i> articulatus L ? militaris Bigel <i>D</i> o Canadensis var longicaudatus Engl <i>AS</i> --- var coarctatus Engl <i>c</i> | Najas flexilis Rostk <i>s</i> o |
| Goodyera repens RBr <i>s</i> JS DG pubescens RBr <i>r</i> D | ARETHACEÆ. Arethusa bulbosa L <i>s</i> xs | ERIOCAULONACEÆ. Eriocaulon septangulare With <i>f</i> |
| Calopogon pulchellus RBr <i>s</i> s | Pogonia ophioglossoides Nutt <i>s</i> s | CYPERACEÆ. Dulichium spathaceum Pers <i>f</i> |
| Habenaria tridentata Hook <i>s</i> (S) G hyperborea RBr <i>r</i> J(G) obtusata Richn <i>r</i> G Hookeri Torr <i>s</i> s orbiculata Torr <i>s</i> Gs blephariglotis Hook <i>s</i> s = psycodes Gr <i>f</i> fimbriata RBr <i>r</i> (S) D ? | HAENARIACEÆ. Luzula pilosa Willd campestris DC <i>c</i> | Heleocharis Robbinsii Oakes <i>s</i> wo obtusata Schul palustris RBr (tenuis Schul G) acicularis RBr |
| Cypripedium spectabile Swz <i>r</i> J = acule Ait <i>f</i> | TYPHACEÆ. Typha latifolia L Sparganium simplex Huds --- var angustifolium Gr <i>s</i> | Scirpus crespitosus L <i>s</i> P Clintonii Gr <i>R</i> P <i>w</i> pungens Vahl Eriophorum Mx atrovirens Muhl |
| IRIDACEÆ. Iris = versicolor L <i>a</i> Sisyrinchium anceps L ? [63S] | ARACEÆ. Arisæma = triphyllum Torr <i>c</i> Calla = palustris L <i>f</i> | Eriophorum alpinum L <i>s</i> s(Q) vaginatum L Virginicum L polystachyon L (gracile Koeh G) Rhynchospora (fusca R&Sch <i>R</i> Q) <i>alba</i> Vahl <i>c</i> |
| LILLACEÆ. Smilax herbacea L <i>s</i> JS Polygonatum biflorum Ell <i>s</i> s Streptopus amplexifolius DC | | |

Cladium
mariscoides Torr s 700

Carex
[Few determined; many more species may be looked for, and some of those for which only one locality is given are probably common.]
(pauciflora Lightf M)
Michauxiana Boeck [809]
(foeniculata L GM)
intumescens Rudge *
lurida Wahl J [807]
Pseudo-Cyperus var comosa W Boot J
scabrata Schw *
filiformis L (MG)s
— var latifolia Boeck *
vulgaris Fries A
lenticularis Mx G
maritima Mull *
crinita Lam
Magellanica Lam [775]
limosa L s(QM)
arctata Boot
debilis Mx
gracillima Schw *
flava L
Cederi Ehrh *
pahescens L *
conoidea Schk s
laxiflora Lam *
retrocurva Dew s ?
digitalis Wild ?
Pennsylvanica Lam s
polytrichoides Muhl
(chorderhiza Ehrh M)
stipata Muhl *
rosea Schk J ?
(exilis Dew Q)
echinata var microstachys Boeckl * [756]
canescens L *
— var alpicola Wahl *
trisperma Dew *
(Norvegica Schk R MG)
tribuloides var cristata Bail [760] ?
scoparia Schk *

GRAMINEÆ.

Panicum
capillare L a
dichotomum var nitidum Gr J
laxillorum Lam
crus-galli L a

Setaria
viridis Beauv

Spartina
cynosuroides Willd f
stricta var alterniflora Gr

Zizania
aquatica L s

Leersia
oryzoides Swz
Anthoxanthum
odoratum L

Hierochloa
borealis R&S r *

Alopecurus
pratensis L *
geniculatus L A
— var aristulatus Munro s J [835]

Oryzopsis
asperifolia Mx f

Brachelytrum
aristatum Beauv r J(G)

Phleum
pratense L a

Agrostis
scabra Willd
perennans Tuck
canina L r ?
alba L
— var vulgaris Th [846]

Cinna
— pendula Trin * [848]

Deyeuxia
Canadensis Beauv a
(Deschampsia)
(flexuosa Griseb r G)

Avena
— striata Mx c

Danthonia
spicata Beauv a

Phragmites
communis Tr r Js

Eatonia
Pennsylvanica Gr r J

Poa
annua L
compressa L
serotina Ehrh
alsodes Gr ?
pratensis L
brevifolia Muhl ?
[Apparently several others, both native and introduced.]

Glyceria
Canadensis Trin
elongata Tr r D
obtusa Tr s o
nervata Tr
arundinacea Kunth [873]
fluitans RBr f
maritima Wahl *

Festuca
(duriascula L G)
elatior var pratensis Gr

Bromus
ciliatus L

Lolium
perenne L r *

Agropyrum
repens Beauv a [885]
caninum R&S s [886]

Hordeum
jubatum L

Elymus
Virginicus L c
mollis Tr r I(G)

GYMNOSPERMÆ.

CONIFERÆ.

Thuja
occidentalis L a

Juniperus
communis L s
— var alpina Gaud M ?
Sabina var procumbens Pursh r M

Taxus
baccata var Canadensis Gr

Pinus
— Strobus L a
resinosa Ait a

Picea
nigra Link a
alba Link a

Tsuga
Canadensis Carr

Abies
balsamea Mars

Larix
— Americana Mx a

PTERIDOPHYTA.

EQUISETACEÆ.

Equisetum
arvense L
sylvaticum L
limosum L

OPHIOGLOSSACEÆ.

Botrychium
ternatum Swz f
Virginianum Swz s [930]

FILICES.

Polypodium
— vulgare L f

Pteris
— aquilina L a

Asplenium
thelypteroides Mx
Filix-fœmina Bernh a

Phegopteris
polypodioides Fee c
Dryopteris Fee c

Aspidium
 acrostichoides Swz
 Novboracense Swz
 (Thelypteris Swz - SG)
 cristatum Swz
 - spinulosum var intermedi-
 um Eaton c
 — var dilatatum Horn *

Cystopteris
 fragilis Bernh s
 bulbifera Bernh *

Onoclea
 sensibilis L c
 - Struthiopteris Hoffm [920]

Woodsia
 ilvensis RBr f

Dicksonia
 - pilosiuscula Willd a [924]

Osmunda
 regalis L f
 Claytoniana L c
 - cinnamomea L c

LYCOPODIACEAE.

Lycopodium
 lucidulum Mx c
 annotinum L
 dendroideum Mx a
 clavatum L c
 complanatum L

ISOETACEAE.

Isoetes
 echinospora var Braunii
 Engl J(C)G

