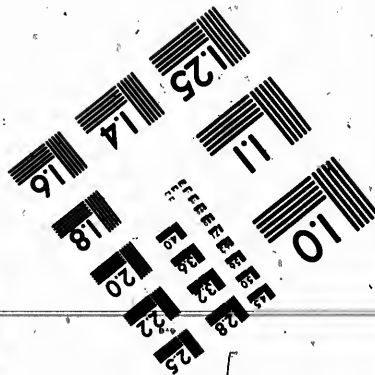
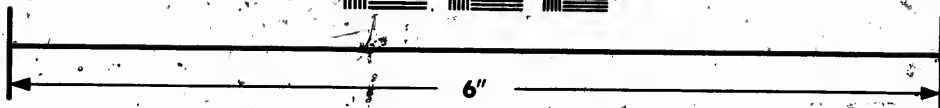
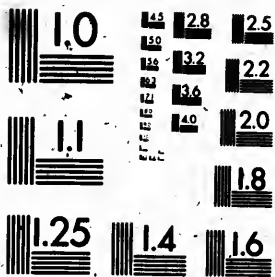


**IMAGE EVALUATION
TEST TARGET (MT-3)**



**Photographic
Sciences
Corporation**

23 WEST MAIN STREET
WEBSTER, N.Y. 14580
(716) 872-4503

15 28
18 22
20 25

**CIHM/ICMH
Microfiche
Series.**

**CIHM/ICMH
Collection de
microfiches.**



Canadian Institute for Historical Microreproductions / Institut canadien de microreproductions historiques

01

© 1987

Technical and Bibliographic Notes / Notes techniques

The Institute has attempted to obtain the best original copy available for filming. Features of this copy which may be bibliographically unique, which may alter any of the images in the reproduction, or which may significantly change the usual method of filming, are checked below.

L'Institut a essayé d'obtenir la meilleure copie originale disponible pour le filmage. Les caractéristiques de cette copie qui peuvent être bibliographiquement uniques, qui peuvent modifier les images dans la reproduction, ou qui peuvent changer de manière significative la méthode habituelle de filmage, sont indiquées ci-dessous.

- Coloured covers/
Couverture de couleur
- Covers damaged/
Couverture endommagée
- Covers restored and/or laminated/
Couverture restaurée et/ou pelliculée
- Cover title missing/
Le titre de couverture manque
- Coloured maps/
Cartes géographiques en couleur
- Coloured ink (i.e. other than blue or black)/
Encre de couleur (i.e. autre que bleue ou noire)
- Coloured plates and/or illustrations/
Planches et/ou illustrations en couleur
- Bound with other material/
Relié avec d'autres documents
- Tight binding may cause shadows or distortion
along interior margin/
La reliure serrée peut causer de l'ombre ou de la
distorsion le long de la marge intérieure
- Blank leaves added during restoration may appear
within the text. Whenever possible, these have
been omitted from filming/
Il se peut que certaines pages blanches ajoutées
lors d'une restauration apparaissent dans le texte,
mais, lorsque cela était possible, ces pages n'ont
pas été filmées.
- Additional comments:/
Commentaires supplémentaires:

- C
- Pa
- Pa
- Pa
- Pa
- Pa
- Pa
- Pa
- SI
- Q
- Q
- C
- Pa
- In
- C
- T
- L
- T
- Pa
- C
- T
- M
- G

This item is filmed at the reduction ratio checked below/
Ce document est filmé au taux de réduction indiqué ci-dessous.

10X	14X	18X	22X
12X	16X	20X	22X

ographic Notes / Notes techniques et bibliographiques

L'Institut a microfilmé le meilleur exemplaire qu'il lui a été possible de se procurer. Les détails de cet exemplaire qui sont peut-être uniques du point de vue bibliographique, qui peuvent modifier une image reproduite, ou qui peuvent exiger une modification dans la méthode normale de filmage sont indiqués ci-dessous.

- Coloured pages/
Pages de couleur
- Pages damaged/
Pages endommagées
- Pages restored and/or laminated/
Pages restaurées et/ou pelliculées
- Pages discoloured, stained or foxed/
Pages décolorées, tachetées ou piquées
- Pages detached/
Pages détachées
- Showthrough/
Transparence
- Quality of print varies/
Qualité inégale de l'impression
- Continuous pagination/
Pagination continue
- Includes index(es)/
Comprend un (des) index
- Title on header taken from:/
Le titre de l'en-tête provient:
 - Title page of issue/
Page de titre de la livraison
 - Caption of issue/
Titre de départ de la livraison
 - Masthead/
Générique (périodiques) de la livraison

below/
ci-dessous.

22X

26X

30X

		✓								
--	--	---	--	--	--	--	--	--	--	--

20X

24X

28X

32X

The copy filmed here has been reproduced thanks to the generosity of:

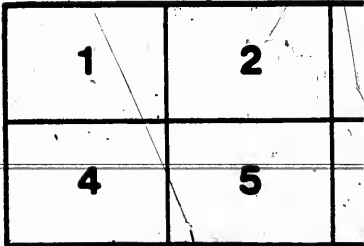
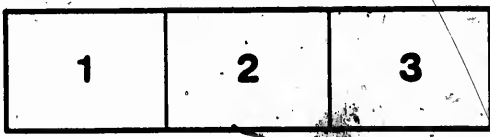
Stratford Perth Archives
Stratford, Ontario

The images appearing here are the best quality possible considering the condition and legibility of the original copy and in keeping with the filming contract specifications.

Original copies in printed paper covers are filmed beginning with the front cover and ending on the last page with a printed or illustrated impression, or the back cover when appropriate. All other original copies are filmed beginning on the first page with a printed or illustrated impression, and ending on the last page with a printed or illustrated impression.

The last recorded frame on each microfiche shall contain the symbol \rightarrow (meaning "CONTINUED"), or the symbol ∇ (meaning "END"), whichever applies.

Maps, plates, charts, etc., may be filmed at different reduction ratios. Those too large to be entirely included in one exposure are filmed beginning in the upper left hand corner, left to right and top to bottom, as many frames as required. The following diagrams illustrate the method:



L'exer
géné

Les in
plus g
de la
conf
filma

Les e
papie
par le
derni
d'imp
plet,
origi
premi
d'imp
la der
empr

Un de
derni
cas: f
symb

Les c
filme
Lorsq
repro
de l'a
et de
d'ima
illust

thanks

L'exemplaire filmé fut reproduit grâce à la générosité de:

Stratford Perth Archives
Stratford, Ontario

ality
bility
e

Les images suivantes ont été reproduites avec le plus grand soin, compte tenu de la condition et de la netteté de l'exemplaire filmé, et en conformité avec les conditions du contrat de filmage.

filmed
on
mpres-
All
on the
est
inted

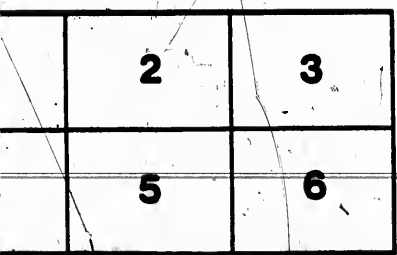
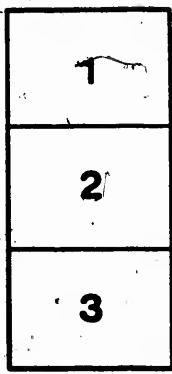
Les exemplaires originaux dont la couverture en papier est imprimée sont filmés en commençant par le premier plat et en terminant soit par la dernière page qui comporte une empreinte d'impression ou d'illustration, soit par le second plat, selon le cas. Tous les autres exemplaires originaux sont filmés en commençant par la première page qui comporte une empreinte d'impression ou d'illustration et en terminant par la dernière page qui comporte une telle empreinte.

e
ON-
D").

Un des symboles suivants apparaît sur la dernière image de chaque microfiche, selon le cas: le symbole \rightarrow signifie "A SUIVRE", le symbole ∇ signifié "FIN".

nt
to be
d
ft to
s
the

Les cartes, planches, tableaux, etc., peuvent être filmés à des taux de réduction différents. Lorsque le document est trop grand pour être reproduit en un seul cliché, il est filmé à partir de l'angle supérieur gauche, de gauche à droite, et de haut en bas, en prenant le nombre d'images nécessaire. Les diagrammes suivants illustrent la méthode.



72.27.382 (F)



E.W.G.

The Antigone (Sophocles),

BY THE
STUDENTS OF TORONTO
UNIVERSITY.

Under the immediate patronage of their Excellencies The Governor-General and
the Countess of Aberdeen, and His Honor The Lieutenant-Governor
and Mrs. Kirkpatrick.

CHOREOI—(Guarantors):

MRS. ALEXANDER CAMERON,

MR. GEORGE GOODERHAM,


MR. WILLIAM MULOCK, Q.C., M.P.

Vice-Chancellor of the University.

THE HON. FRANK SMITH.

Thursday,
February 15th,
1894.

ARGUMENT.

AIUS, King of Thebes, had been warned against marriage, but rashly and recklessly he disregarded the warning. The son born to him, Oedipus, was taken away to a foreign land and adopted by its king and queen for their own son. Being warned that he was fated to kill his father and marry his mother, he endeavored to avert this doom, but from a like rashness, in his haste to prove the warning false, he left his supposed parents, came unwittingly to his former home, killed Laius in a random quarrel, and married Jocasta, his mother, before enquiring whether his reputed parents were his real parents or not. The same fault of blind recklessness destroys his sons, Eteocles and Polynices, who quarrel about the succession to the throne, and fall by each other's hands in battle. From the same fault Antigone hastened to bury Polynices' body, without seeking to win thereto the consent of the king, her uncle Creon, who had forbidden

the burial, because Polynices had fallen while leading an invading host against his country. From the same fault Creon, blind to everything except the obligation to punish disloyalty, persists in refusing burial to Polynices, and in condemning Antigone, when she attempts to bury her brother, to death by starvation. Antigone in her haste at once commits suicide. Creon, after his first passion has spent itself, is frightened by the blind prophet Teiresias into relenting. But his relenting is too late to save her, and meanwhile her death destroys Creon's son, her lover and cousin Haemon, who kills himself over her body. His death in turn is a fatal blow to his mother, the Queen Eurydice, who has lately lost in war her only other son, Megareus, and a third suicide follows. Creon is left childless and wifeless; he has learnt the lesson that prudence is the larger part of happiness, but he has learnt too late, and the curse of rashness has destroyed the whole royal house in both its lines.

Cast.

KING CREON
 HAEMON
 PROPHET
 WATCHMAN
 FIRST MESSENGER
 SECOND MESSENGER
 CORYPHEUS
 ANTIGONE
 ISMENE
 QUEEN EURYDICE
 MAIDS OF HONOR
 KING'S GUARD
 PROPHET'S BOY

MR. K. D. MACMILLAN, '94.
 " W. P. REEVE, '95.
 " P. J. ROBINSON, '96.
 " H. J. SISSONS, '94.
 " C. P. MEGAN, '95.
 " R. H. COATES, '96.
 " F. E. BIGELOW, '94.
 MISS HUNTER, '95.
 " DURAND, '95.
 " STEEN, '95.
 " NEELANDS, '96.
 " BURNHAM, '96.
 MR. G. H. LEVY, '94.
 " W. M. BOULTBEE, '94.
 " D. JAMES, '94.
 " J. DODDS, '96.
 " D. R. GRANT, '97.

The Stage Chorus.

MR. T. BLYTH, '94.
 " W. CURRIE, '95.
 " T. DOCKRAY, B.A., '91.
 " J. H. FIELDING, '94.
 " F. B. GOODWILLIE, '94.
 FLUTE PLAYER,

MR. W. B. HOWELL, '94.
 " W. KNOX, '94.
 " D. B. MACDONALD, '95.
 " W. H. MERKLEY, '94.
 " J. L. MURRAY, '95.
 MR. J. M. NICOL, '97
 " F. S. PEARCE, '95.
 " F. D. ROXBURGH, '91.
 " D. RUTHVEN, '96.
 " C. YOUNG, '97.
 C. CHAISEGREEN, '96.

The Chorus.

MR. W. BLAKE, B.A.
 " W. BURTON, '94.
 " A. BOULTBEE, M.D.
 " W. N. BELL, '94.
 " E. D. CARDER, '95.
 " W. CRONYN, '95.
 " C. CAMPBELL, '96.
 " W. P. COHOE, '96.
 " J. H. EDMISON, '97.
 " A. FORRESTER.
 " J. F. FOTHERINGHAM,
 B.A., M.D.
 " W. H. GILLESPIE, '94.
 " R. GRANT, '96.
 " HAGGARTY, B.A.

MR. J. E. JONES, B.A.
 " A. LINDSAY, '95.
 " H. A. LITTLE, '94.
 " A. T. LITTLE, '97.
 " R. N. MERRITT, '97.
 " C. MITCHELL, '94.
 " A. E. McLAUGHLIN,
 B.A.
 " C. McPHERSON, '96.
 " R. F. McWILLIAMS, '96.
 " A. S. McKAY, '96.
 " T. McCRAE, B.A.
 " W. S. McKAY, '97.
 " R. E. MANNING, '94.
 " F. McCONNELL, '95.

MR. A. McALLISTER, '93
 " S. G. PARKER, B.A.
 M.D.
 " W. H. PEASE, '94
 " STACKBLER, '97.
 " L. F. STEVENS, '97.
 " E. J. SHIRLEY.
 " D. B. TAYLOR, '95
 " G. W. TAYLOR.
 " H. T. WOOD, '95.
 " G. WISHART, B.A.,
 M.D.
 " I. L. HYLAND, '95.
 " T. M. WILSON, '95.

AND MR. W. H. ROBINSON AND PROF. RAMSAY WRIGHT.

445.3
F. 102

CONDUCTOR, MR. F. H. TORRINGTON.
CHORUS MASTER, MR. W. H. ROBINSON.
BUSINESS MANAGER, MR. I. E. SUCKLING.

THE MUSIC.

THE Music of Mendelssohn, written for Donner's German translation, was adapted to the Greek by Professor Ramsay Wright, in 1882, for the former representation. That was the first occasion on which it was sung to the original language.

THE COLORS and DRESSES.

The black and yellow of *Antigone and Ismene* are the colors of *Greek Mourning*. The netted shawl of *Teiresias the Prophet* is as close a representation of a Greek Prophet's dress as our knowledge of its details permits. *The Watchman* is essentially a clown and a rustic,—a shepherd more than a soldier. He is accordingly dressed in a coat of hair-cloth and wears a sheepskin for a cloak. *The White (without purple)* is the dress of a Queen sacrificing to the gods.

NOTE.

The Stage representation is under the direction of Mr. H. N. Shaw, B.A. Prompter, Mr. J. C. Breckenridge, '93.

