

**CIHM  
Microfiche  
Series  
(Monographs)**

**ICMH  
Collection de  
microfiches  
(monographies)**



**Canadian Institute for Historical Microreproductions / Institut canadien de microreproductions historiques**

**© 1997**

## Technical and Bibliographic Notes / Notes techniques et bibliographiques

The Institute has attempted to obtain the best original copy available for filming. Features of this copy which may be bibliographically unique, which may alter any of the images in the reproduction, or which may significantly change the usual method of filming are checked below.

- Coloured covers / Couverture de couleur
- Covers damaged / Couverture endommagée
- Covers restored and/or laminated / Couverture restaurée et/ou pelliculée
- Cover title missing / Le titre de couverture manque
- Coloured maps / Cartes géographiques en couleur
- Coloured ink (i.e. other than blue or black) / Encre de couleur (i.e. autre que bleue ou noire)
- Coloured plates and/or illustrations / Planches et/ou illustrations en couleur
- Bound with other material / Relié avec d'autres documents
- Only edition available / Seule édition disponible
- Tight binding may cause shadows or distortion along interior margin / La reliure serrée peut causer de l'ombre ou de la distorsion le long de la marge intérieure.
- Blank leaves added during restorations may appear within the text. Whenever possible, these have been omitted from filming / Il se peut que certaines pages blanches ajoutées lors d'une restauration apparaissent dans le texte, mais, lorsque cela était possible, ces pages n'ont pas été filmées.
- Additional comments / Commentaires supplémentaires:

L'Institut a microfilmé le meilleur exemplaire qu'il lui a été possible de se procurer. Les détails de cet exemplaire qui sont peut-être uniques du point de vue bibliographique, qui peuvent modifier une image reproduite, ou qui peuvent exiger une modification dans la méthode normale de filmage sont indiqués ci-dessous.

- Coloured pages / Pages de couleur
- Pages damaged / Pages endommagées
- Pages restored and/or laminated / Pages restaurées et/ou pelliculées
- Pages discoloured, stained or foxed / Pages décolorées, tachetées ou piquées
- Pages detached / Pages détachées
- Showthrough / Transparence
- Quality of print varies / Qualité inégale de l'impression
- Includes supplementary material / Comprend du matériel supplémentaire
- Pages wholly or partially obscured by errata slips, tissues, etc., have been refilmed to ensure the best possible image / Les pages totalement ou partiellement obscurcies par un feuillet d'errata, une pelure, etc., ont été filmées à nouveau de façon à obtenir la meilleure image possible.
- Opposing pages with varying colouration or discolorations are filmed twice to ensure the best possible image / Les pages s'opposant ayant des colorations variables ou des décolorations sont filmées deux fois afin d'obtenir la meilleure image possible.

This item is filmed at the reduction ratio checked below /  
Ce document est filmé au taux de réduction indiqué ci-dessous.

			12x			14x			16x			18x			20x			22x			24x			26x			28x			30x			32x		

The copy filmed here has been reproduced thanks to the generosity of:

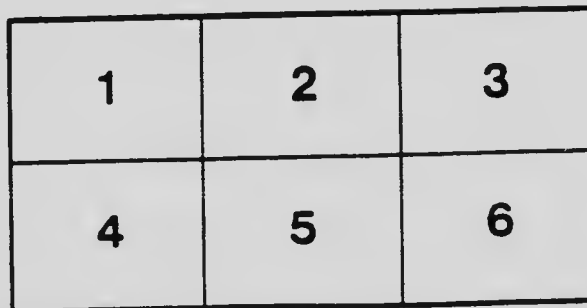
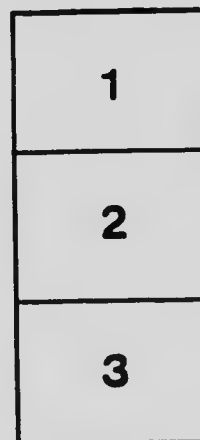
Stauffer Library  
Queen's University

The images appearing here are the best quality possible considering the condition and legibility of the original copy and in keeping with the filming contract specifications.

Original copies in printed paper covers are filmed beginning with the front cover and ending on the last page with a printed or illustrated impression, or the back cover when appropriate. All other original copies are filmed beginning on the first page with a printed or illustrated impression, and ending on the last page with a printed or illustrated impression.

The last recorded frame on each microfiche shall contain the symbol  $\rightarrow$  (meaning "CONTINUED"), or the symbol  $\nabla$  (meaning "END"), whichever applies.

Maps, plates, charts, etc., may be filmed at different reduction ratios. Those too large to be entirely included in one exposure are filmed beginning in the upper left hand corner, left to right and top to bottom, as many frames as required. The following diagrams illustrate the method:



L'exemplaire filmé fut reproduit grâce à la générosité de:

Stauffer Library  
Queen's University

Les images suivantes ont été reproduites avec le plus grand soin, compte tenu de la condition et de la netteté de l'exemplaire filmé, et en conformité avec les conditions du contrat de filmage.

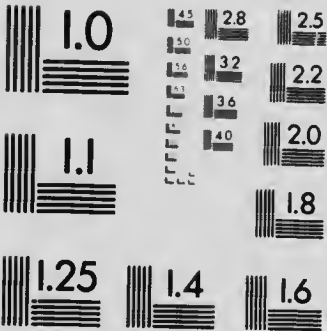
Les exemplaires originaux dont la couverture en papier est imprimée sont filmés en commençant par le premier plat et en terminant soit par la dernière page qui comporte une empreinte d'impression ou d'illustration, soit par le second plat, selon la cas. Tous les autres exemplaires originaux sont filmés en commençant par la première page qui comporte une empreinte d'impression ou d'illustration et en terminant par la dernière page qui comporte une telle empreinte.

Un des symboles suivants apparaît sur la dernière image de chaque microfiche, selon le cas: le symbole  $\rightarrow$  signifie "A SUIVRE", le symbole  $\nabla$  signifie "FIN".

Les cartes, planches, tableaux, etc., peuvent être filmés à des taux de réduction différents. Lorsque le document est trop grand pour être reproduit en un seul cliché, il est filmé à partir de l'angle supérieur gauche, de gauche à droite, et de haut en bas, en prenant le nombre d'images nécessaire. Les diagrammes suivants illustrent la méthode.

# MICROCOPY RESOLUTION TEST CHART

(ANSI and ISO TEST CHART No. 2)



**APPLIED IMAGE Inc**

1653 East Main Street  
Rochester, New York 14609 USA  
(716) 482-0300 - Phone  
(716) 258-5989 - Fax

REPORT  
OF THE  
CANADIAN ARCTIC EXPEDITION  
1913-18

VOLUME VIII: MOLLUSKS, ECHINODERMS  
COELENTERATES, ETC.

GEORGE S. SUTHER  
JUN 20 1919  
LIBRARY

PART A:

Mollusks, Recent and Pleistocene . . . William Healey Dall

Southern Party, 1913-16



670  
1913 C2  
V. 8, Pt. A

OTTAWA  
J. de LABROQUERIE TACHÉ  
PRINTER TO THE KING'S MOST EXCELLENT MAJESTY  
1919

Issued September 24, 1919

670  
1913  
C2  
v. 008  
pt. A  
c. 3



REPORT  
OF THE  
CANADIAN ARCTIC EXPEDITION  
1913-18

VOLUME VIII: MOLLUSKS, ECHINODERMS,  
COELENTERATES, ETC.

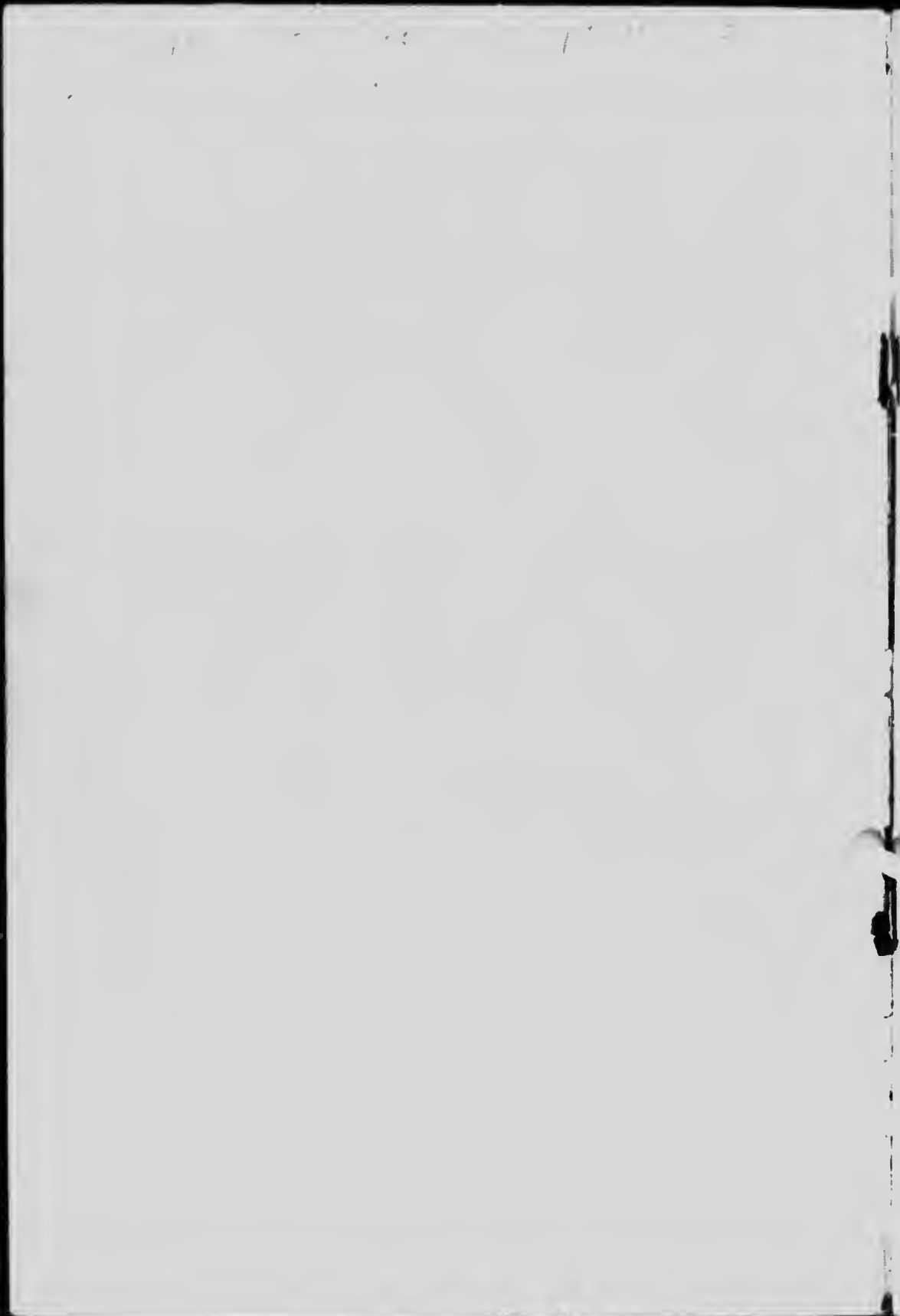
PART A:

Mollusk: Recent and Pleistocene . . . William Healey Dall

Southern Party, 1913-16



OTTAWA  
J. de LABROQUERIE TACHÉ  
PRINTER TO THE KING'S MOST EXCELLENT MAJESTY  
1919





**The Mollusca of the Arctic Coast of America collected by  
the Canadian Arctic Expedition west from Bathurst  
Inlet with an Appended Report on a Collection  
of Pleistocene Fossil Mollusca.**

By WILLIAM HEALEY DALL, A.M., D.Sc., LL.D.  
*Honorary Curator of Mollusks, U. S. Nat. Museum*

With three plates.

The collection of Mollusca in the region indicated by the title of this report is of special interest, since the only collections hitherto made between the Mackenzie delta and the archipelago to the eastward were due to R. Macfarlane of the Hudson's Bay Company, factor of the most northern post of the company, and who, about 1863, made a journey from the head of the delta to the sea and collected *Chrysodonus heros*, *Astarte borealis*, and very thin valves of *Mytilus edulis*, in considerable numbers. The fauna to the eastward of the delta has remained entirely unknown. The great outpour of fresh water from the Mackenzie might reasonably have proved a barrier which the characteristic species of the western Arctic ocean might not have been able to pass, and there was, therefore, a possibility that the eastward fauna would show a considerable infusion of Greenlandic forms.

It may be observed here that the Bering Strait region and the Polar sea north of it have a fauna which, when the truly circumpolar species are eliminated, is markedly distinct from that of the Greenlandic and boreal Atlantic seas. During the Pliocene the Arctic land was lower, and there was more easy communication between the two areas, as is made evident by the discovery in each Pliocene fauna of species now extinct there, but which have survived in the other area. It is convenient, therefore, to refer to the respective faunas of the two areas by the denomination Western or Eastern Arctic fauna.

The result of the study of the collection was somewhat unexpected, since it proved that out of all the species collected east of cape Bathurst only five can be considered at present as characteristically Eastern Arctic, namely:

*Arca glacialis* Gray.  
*Lamellidoris* cf. *liturata* Beck.  
*Philine finmarchica* M. Sars.  
*Lamellaria grönlandica* Möller.  
*Littorina grönlandica* Mörch.

The fresh-water and land species are, with the exception of the *Physa*, common to most of boreal America and have an entirely different distribution from the marine forms. They include:—

*Succinea chrysis* Westerlund.  
*Agriolimnax hyperboreus* Westerlund.  
*Physa jennessi*, n. sp.  
*Aplexa hypnorum* Linné.  
*Lymnaea palustris rahli* Beck.  
*Lymnaea stagnalis appressa* Say.  
*Valvata lewisii* Currier.  
*Pisidium rotundatum* Prime.

The northern *Lymnaeas* are extremely puzzling. I have had a large number, including a series named by Mørch from Beck's types in Copenhagen, with which to make comparisons and I cannot detect from the shells any specific differences between the form we have called *capitata* Say, and the numerous variations of the Greenland type which have passed under the name of *valis* Beck. I am disposed to regard all of them as boreal mutations of *L. palustris* Müller.

The *Physa* is of unusual interest as the most northern species of the genus, and the only one so far reported from the Arctic coast as properly restricted.

A small collection was made at Orea, in Prince William sound, containing nine species which should be left out of consideration in discussing the Arctic fauna. These, while incorporated in the general list, have not been included in the present review of the Arctic species.

#### SUMMARY OF MARINE SPECIES

Arctic species from the western Arctic area west of the Mackenzie River delta	72
Arctic species from east of the delta	58
Total	130
Species common to the two areas	30
Actual number of species	100
New marine species	6

The new marine species from east of the Mackenzie delta are:

- Pseudamussium andersoni* (Pl. II, figs. 7 and 8).  
*Macoma ancilli* (Pl. II, fig. 1).

Those from west of the delta:

- Leda (Portlandia) collinsoni* (Pl. II, figs. 3 and 4).  
*Plicifusus johanseni* (Pl. III, fig. 1).  
*Volatopsius stefanssoni* (Pl. I, fig. 1).  
*Margarites ceorinatus* (Pl. II, figs. 5 and 6).

New fresh-water species:

- Physa jennessi* (Pl. II, fig. 1).

It will be noted that only five per cent of the marine species are characteristically Eastern Atlantic forms, and with more thorough exploration of the Western Atlantic fauna several of these may prove to be circumpolar species.

Of the forty-two western area species and the twenty-eight eastern area species which were not collected in both areas by the expedition, none are known that are not found in some part of the western area. The fact that they were not collected there by this expedition is purely accidental.

When we examine a map and observe the vast gulf of the Polar sea heading to the southeast in the passages eastward from the Bathurst; and on the other hand observe the narrow, tortuous, and ice-blocked passages which communicate with the Greenland seas, it requires no further evidence to explain the failure of the Eastern Arctic fauna to penetrate westward, or the success of the Western Arctic species in colonizing the ground they occupy.

Those who understand the difficulties which hamper the work of a collector in these icy seas will feel appropriately grateful to Mr. Johansen and his associates for these important contributions to our knowledge of the distribution of marine life in a region so inaccessible to the ordinary collector.

The portions of the Arctic region which may be reached with relative ease have been so thoroughly explored for mollusks that little hope is justified for the discovery of undescribed species. It is therefore gratifying that the work of the members of the expedition has been what is really unexpectedly successful in this line.

I have to thank the authorities in Canada, for the care they have taken to do everything that might lighten my labour in preparing this report, and the Direction of the United States National Museum for the free use of all their facilities during its preparation. For the accuracy of the station numbers Mr. Johansen is solely responsible.

LIST OF SPECIES COLLECTED WEST OF THE DELTA OF THE MACKENZIE RIVER.

- Narada tenuis* Montagu, 23.  
*Leda* (*Portlandia*) *arctica* Gray, 23, 27s.  
*Leda minuta* Fabricius, 23.  
*Leda perula*, 23.  
*Leda radiata*, Krause, 23.  
*Leda intermedia* Sars, 20b c, 20d.  
*Leda collinsoni* Dall, 27s.  
*Yoldia myalis* Couthouy, 23.  
*Yoldia limatula* Say, 23 (+ *hyperborea* Lovén.)  
*Mytilus edulis* Linné, 20b c; 20d, 21, 60a, 20g.  
*Musculus berrigatus* Gray, 27s, 28l, 21, 23.  
*Musculus niger* Gray, 21.  
*Crenella* aff. *rotundata* Dall, 27s.  
*Pandora* sp., 27s.  
*Lyonsia arenosa* Möller, 27s, 21.  
*Astarte borealis* Schumacher, 23, 21, 26, 27s, 28l, 28t, 54c.  
*Astarte polaris* Dall, 54c.  
*Astarte alaskensis* Dall, 54c.  
*Cardium californiense* Deshayes, 20b c; 20d, 20g.  
*Cardium carbis* Martyn, 60a.  
*Cardium ciliatum* Fabricius, 23.  
*Serripes grönländicus* Gmelin, 20d, 23, 21.  
*Serripes lapronsei* Deshayes, 22.  
*Saxidomus giganteus* Deshayes, 60a.  
*Protothaca staminea* Conrad, 60a.  
*Liocyma beckii* Dall, 23, 21, 27s.  
*Tellina* (*Peronidia*) *lutea* Gray, 20d, 20g.  
*Macoma calcarva* Gmelin, 23, 21.  
*Macoma incongrua* Martens, 20d, 20g.  
*Macoma inquinata* Deshayes, 60a.  
*Macoma maesta* Deshayes, 21.  
*Macoma balthica* Linné, 54c, 20d.  
*Macoma inconspicua* Broderip & Sowerby, 20b c, 20d, 20g, 21.  
*Spisula polyynna* Stm. var. *alaskana* Dall, 20g, 20a.  
*Mya truncata* Linné, 23, 21.  
*Mya intermedia* Dall, 20d, 21.  
*Saxicava arctica* Linné, 20d, 23, 21, 60a.  
*Cyrtodaria kurriana* Dunker, 20d, 26, 27s, 54c.  
*Zirfaa gabbi* Tryon, 21.  
*Coryphella* cf. *salmonacea* Couthouy, 20g.

<sup>1</sup>The numbers refer to the number of the Collecting Station. See page 7s, et seq.

- Philine* cf. *sinuata* Stimpson, 20g.  
*Cylichna nuxicola* Reeve, 20b-c.  
*Utriculus semen* Reeve, 27s, 20b-c.  
*Agriolimnax hyperboreus* Westerlund. Nome, Camden bay.  
*Succinea chrysis* Westerlund, tundra at Nome.  
*Lymnaea caperata* Say; 28i (this probably = *vahli* Beck.)  
*Lymnaea stagnalis* Linné, var. *appressa* Say. Mackenzie river delta.  
*Aplexa hypnorum* Linné. Camden bay; Demareation point; pond on Herschel island; pond at Collinson point; brackish pond near Teller, Grantley harbour; port Clarence, Alaska.  
*Lora trevelliiana* Turton, 27s.  
*Admete middendorffiana* Dall, 20d.  
*Admete elongata* Leche, 23.  
*Beringius* sp. egg-capsules, 20m.  
*Chrysodomus* sp. egg-capsules, 20m.  
*Chrysodomus liratus* Martyn, 20b-c, 20m; 23.  
*Chrysodomus solutus* Herrman, 20d; 20g; 20m; 24.  
*Chrysodomus saturus* Martyn, 20g; 24.  
*Plicifusus johanseni* Dall, 24.  
*Plicifusus kroyeri* Möller, 23.  
*Volutopsius stefanssoni* Dall, 24.  
*Buccinum* sp. egg capsules, 20m, 24.  
*Buccinum tenne* Gray, 22; 23.  
*Buccinum orotundum* Dall, 22.  
*Buccinum normale* Dall, 24.  
*Buccinum angulosum subcostatum* Dall, 24.  
*Buccinum angulosum* Gray, 24.  
*Buccinum plectrum* Stimpson, 24.  
*Buccinum polare* Gray, 24.  
*Buccinum cyaneum* Hancock, 24, 22.  
*Buccinum glaciale* Phipps, 24.  
*Thais lamellosa* Gmelin, 60a.  
*Neptunea beringi* Dall, 23.  
*Fusitriton oregonense* Redfield, 30d (adventitious).  
*Boreoscala greenlandica* Perry, 23.  
*Tachyrhynchus crosus* Couthouy, 54c.  
*Lacuna divaricata* Fabricius, 20b-c, 20g, 20h.  
*Littorina grandis* Middendorff, 20d, 20g.  
*Littorina sitkana* Philippi, 60a.  
*Piliscus commodus* Middendorff, 23; 24.  
*Natica* (*Cryptonatica*) *clausa* Broderip & Sowerby, 20b-c; 20d; 20g; 24; 54c.  
*Euspira pallida* Broderip & Sowerby, 23; 24; 28l.  
*Amauropsis purpurea* Dall, 20b-c; 20d; 24, 28l; 31a; 32b.  
*Velutina zonata* Gould, 24.  
 "Velutina" *spongiophila* Middendorff, 24. (Hydroid).  
*Acmæa scutum* var. *patina* Eschscholtz, 60a.  
*Acmæa pelta* Eschscholtz, 60a.  
*Acmæa emydia* Dall, 22.  
*Margarites sordidus* Hancock, 22; 23.  
*Margarites cearinatus* Dall, 22.  
*Machæroplax varicosus* Mighels, 23.  
*Amicula vestita* Sowerby, 22.

## SPECIES OBTAINED AT EACH STATION WEST OF THE MACKENZIE RIVER.

## STATION 20b c.

Grantley harbour, port Clarence, in 2-3 fathoms muddy bottom, near Teller, Alaska.

*Leda intermedia* Sars.  
*Mytilus edulis* L.  
*Macoma inconspicua* Brod. & Sby.  
*Cardium californiense* Deshayes.  
*Cylichna nucleola* Reeve.  
*Utriculus semen* Reeve.  
*Chrysodomus hiratus* Martyn (young).  
*Lacuna divaricata* Fabr.  
*Natica clausa* Brod. & Sby.  
*Amauropsis purpurca* Dall.  
 Gastropod eggs.

## STATION 20d.

Grantley harbour, port Clarence, near Teller, Alaska. Beach.

*Leda intermedia* Sars.  
*Mytilus edulis* L.  
*Tellina (Peronidia) lutea* Gray.  
*Macoma inconspicua* Brod. & Sby.  
*Macoma incongrua* von Martens.  
*Macoma balthica* L. (young).  
*Cardium californiense* Deshayes.  
*Serripes grönlandiens* Guélin.  
*Saxicava arctica* L.  
*Mya intermedia* Dall.  
*Cyrtodaria kurriana* Dunker.  
*Admete middendorffiana* Dall.  
*Chrysodomus solutus* Herrman (fragm.).  
*Littorina grandis* Midd.  
*Natica clausa* Brod. & Sby.  
*Amauropsis purpurca* Dall.

## STATION 20g.

Port Clarence, Bering strait, Alaska, 2-3 fathoms, sandy mud.

*Mytilus edulis* L., also young, on floating kelp, sta 20h.  
*Tellina (Peronidia) lutea* Gray.  
*Macoma inconspicua* Brod. & Sby.  
*Cardium californiense* Deshayes.  
*Spisula polynyma* (Stm.) var. *alaskana* Dall.  
*Coryphella*<sup>1</sup> cf. *salmonacca* Couthouy; and ovicepsules.  
*Philine* cf. *sinuata* Stm.  
*Littorina grandis* Midd.  
*Chrysodomus solutus* Herrman  
*Chrysodomus saturus* Martyn.  
*Lacuna divaricata* Fabr. (Young); also on floating kelp, 20h.  
*Natica clausa* Brod. & Sby., and nidamental capsules.

<sup>1</sup>Greyish brown in colour, the gill filaments white-tipped

## STATION 20m.

Beach at port Clarence, Alaska.

*Spisula polynyma* (Stm.) var. *alaskana* Dall.  
*Chrysodomus solutus* Herrman (fragm.).  
*Chrysodomus liratus* Martyn.  
*Chrysodomus* sp. (egg capsules).  
*Buccinum* sp. (egg capsules).

## STATION 22.

Latitude 69° 35' N., longitude 163° 27' W., 11-12 fathoms, rock and sand bottom, off cape Lisburne, Alaska.

*Sciripes laperousei* Deshayes.  
*Buccinum tenue* Gray.  
*Buccinum orotundum* Dall (Young).  
*Margarites (Pupillaria) sordidus* Hancock.  
*Margarites (Pupillaria) ccarinatus* Dall.  
*Acmaea emydia* Dall.  
*Amicula restita* Sowerby.

## STATION 23.

Latitude 70° 24' N., longitude 161° 25' W., off Sea Horse islands, Alaska, 9-10 fathoms, mud with pebbles.

*Leda minuta* Fabr.  
*Leda pernula* Möller.  
*Leda radiata* Krause.  
*Leda arctica* Gray.  
*Nucula tenuis* Mont.  
*Yoldia myalis* Couth.  
*Yoldia limatula* Say.  
*Musculus laevigatus* Gray.  
*Macoma calcarata* Gmelin.  
*Sciripes gröenlandicus* Gmelin.  
*Cardium ciliatum* Fabr.  
*Astarte borealis* Schum.  
*Liocyma beckii* Dall.  
*Saxicava arctica* L.  
*Mya truncata* L. (young).  
*Admete elongata* Leche.  
*Chrysodomus liratus* Martyn.  
*Plicifusus kroyeri* Möller.  
*Buccinum tenue* Gray.  
*Neptunea beringi* Dall.  
*Euspira pallida* Brod. & Sby.  
*Euspira* sp. (ovicapsules).  
*Piliscus commodus* (Midd.)  
*Margarites (Pupillaria) sordidus* Hancock.  
*Macharoplax varicosus* Mighels.

## STATION 24.

Sandspit at point Barrow, Alaskan Arctic coast.

*Mytilus edulis* L.  
*Musculus niger* Gray.  
*Musculus larrigatus* Gray.  
*Serripes gröndlandicus* Gmel.  
*Astarte borealis* Schum.  
*Macona calcarea* Gmelin.  
*Liocyma beekii* Dall.  
*Saxiraca arctica* L.  
*Mya truncata* L.  
*Mya truncata* var. *mdderallensis* Forbes.  
*Mya intermedia* Dall.  
*Zirfaa gabli* Tryon.  
*Chrysodanus salutus* Herrman.  
*Chrysodanus saturus* Martyn.  
*Plicifusus johansenii* Dall.  
*Volutopsis stefanssoni* Dall.  
*Buccinum normale* Dall.  
*Buccinum angulosum* (Gray) *subrotatum* Dall.  
*Buccinum angulosum* Gray (s. s.).  
*Buccinum plectrum* Stm.  
*Buccinum polare* Gray.  
*Buccinum cyaneum* Hancock.  
*Buccinum glaciale* Phipps.  
*Buccascala gröndlandica* (Perry).  
*Velutina zonata* Gould.  
 "Velutina" *spongiophila* Midd. (Hydroid).  
*Pileus commadus* Midd.  
*Natica clausa* Brod. & Sby.  
*Euspira pallida* Brod. & Sby.  
*Amatropsis purpurra* Dall.  
*Buccinum, Chrysodanus, etc.*, (ovicapsules).

## STATION 26.

Spy island, Alaskan Arctic Coast, beach.

*Astarte borealis* Schum.  
*Cyclodaria kurriana* Dunker.

## STATION 28i.

Hot Spring creek, Sadlerochit river, inland from Camden bay, Alaskan Arctic coast.

*Lymnea caespitosa* Say, dwarfed.

## STATION 27s.

Off Collinson point, Alaskan Arctic coast, 3 fathoms, mud and gravel.

*Leda arctica* Gray.  
*Leda collinsoni* Dall.  
*Musculus laevigatus* Gray.  
*Crenella* aff. *rotundata* Dall.  
*Astarte borealis* Schum. (fragm.).  
*Liocyma beckii* Dall.  
*Pandora* sp. (fragm.).  
*Macoma* sp. (fragm.).  
*Macoma* sp. (fry).  
*Mya* sp. (fry).  
*Cyrtodaria kurriana* Dkr.  
*Lyonsia arenosa* Möller.  
*Lora trevelliiana* Turton, var.  
*Utriculus semen* Reeve.  
*Euspira* sp., (ovicapsules).  
 Gastropod eggs.

## STATION 28l.

Beach at Collinson point, Alaskan Arctic coast.

*Musculus laevigatus* Gray.  
*Astarte borealis* Schum.  
*Euspira pallida* Brod. & Sby  
*Amauropsis purpurea* Dall.

## STATION 28l.

Beach at Flaxman island, Alaskan Arctic coast.

*Astarte borealis* Schum.

## STATION 30d.

Beach at Demarecation point, Alaskan Arctic coast.

*Fusitriton oregonense* Pedfield (adventitious).

## STATION 31a.

Beach at Camden bay, Alaskan Arctic coast.

*Amauropsis purpurea* Dall.

## STATION 32b.

Sandspit west of Martin Point, Alaskan Arctic coast.

*Amauropsis purpurea* Dall.



## STATION 54e.

Beach at Pauline cove, Herschel island, Arctic coast, Yukon Territory, Canada.

*Macoma balthica* L.  
*Astarte borealis* Schum.  
*Astarte polaris* Dall.  
*Astarte oluskensis* Dall.  
*Cyrtodaria kurriana* Dkr.  
*Saxicava arctica* Linné.  
*Tachyrhynchus erosus* Couthouy.  
*Natica clausa* Brod. & Sby. (fragm.).

## STATION 60a.

Beach at Orca, Prince William sound, Alaska.

*Mytilus edulis* L.  
*Macoma incongrua* v. Marts.  
*Macoma inquinata* Desh.  
*Cardium corbis* Martyn.  
*Saxidomus giganteus* Desh.  
*Protothaca staminea* Conrad.  
*Saxicava arctica* L.  
*Thais lamellosa* Gmelin.  
*Littorina silkcna* Philippi.  
*Acmæa scutum* Esch., var. *patina* Esch.  
*Acmæa pelta* Esch.

Lake at Konganevik, Camden bay, Alaskan Arctic coast.

*Aplexa hypnorum* L.  
*Agriolimnax hyperboreus* Westerlund.

Lake at Demarcation point, Alaskan Arctic coast.

*Aplexa hypnorum* L.

Pond on Herschel island, Arctic coast, Yukon Territory.

*Aplexa hypnorum* L.

Pond at Collinson point, Alaskan Arctic coast.

*Aplexa hypnorum* L.

Brackish pond near Teller, Grantley harbour, Alaska.

*Aplexa hypnorum* L.

Iglukitaktok, Mackenzie river delta.

*Limnaea stagnalis* L. var. *appressa* Say.

Tundra, at Nome, Norton sound, Alaska.

*Succinea chrysis* Westerlund.  
*Agriolimnax hyperboreus* Westerlund.

Grantley harbour, Alaska: (stomach of *Pleuronectes*).

Fragments of *Yoldia*, *Serripes*, *Leda*, and other thin bivalves.

LIST OF SPECIES COLLECTED EAST OF THE DELTA OF THE MACKENZIE RIVER  
AT CAPE BATHURST AND EASTWARD.

- Leda (Portlandia) arctica* Gray, 43b.  
*Leda pernula* Müller, 43a, 43b.  
*Arca glacialis* Gray, 43a, 43b.  
*Pseudamysium andersoni* Dall, 43a.  
*Mytilus edulis* Linné, 37i, p. 38, 44b, 47a, 47b, 47c, 50f.  
*Musculus lavigatus* Gray, 35, 37a, 37b, 41, 41c, 43a, 43b, 43c, 47c.  
*Musculus niger* Gray, 37i, p. 41c, 49r.  
*Musculus corrugatus* Stimpson, 41c, 43a.  
*Musculus vernicosus* Middendorff, 43a.  
*Lyonsia arcuosa* Möller, 43b.  
*Astarte borealis*, Schumacher, 35, 37i, p. 41c, 43c, 47b, 47c, 50f, 53c.  
*Astarte vernicosa* Dall, 43c, 41c.  
*Astarte fabula* Reeve.  
*Cardium ciliatum* Fabricius, 37i, p. f, 43c.  
*Serripes grönländicus* Gmelin, 35, 37i, p. 41, 41c, 47c, 49r, 53c.  
*Pisidium rotundatum* Prime, Freshwater ponds near Bernard harbour;  
 also in stomachs of eider duck and trout.  
*Lioecyba beekii* Dall, 37i, p.  
*Lioecyba viridis* Dall, 41c, 43c.  
*Thyasira flexuosa* Forbes and Hanley, 43a.  
*Macoma calcarea* Gmelin, 35, 43, 53c.  
*Macoma oncelli* Dall, 43a, 43b.  
*Mya truncata* Linné, 37i, p. 41c, 43c, 47c.  
*Mya intermedia* Dall, 43a.  
*Saxicava arctica* Linné, 35, 37a, 37i, p. 43c, 44b, 50a.  
*Saxicava pholadis* Linné, 37i, 40a.  
*Cyrtodaria kurriana* Dunker, 35, 37b, 37i.  
*Lamellidorsis* cf. *liturata* Beck, 43b.  
*Philine finnarchica* M. Sars, 41, 47a.  
*Utriculus semen* Reeve, 42a, 41u, (fragm.), 48a.  
*Cylichna alba* Brown, 41c, 42d.  
*Cylichna nucleola* Reeve, 40u, 42d (fragm.), 41.  
*Aplexa hypnorum* Linné. Generally, in fresh water.  
*Physa jennessi* Dall. Ponds east of Bernard harbour.  
*Agrionimax hyperboreus* Westerlund, Bernard harbour.  
*Lymnaea palustris* variety *vahli* Beck, Victoria island and Bernard  
 harbour.  
*Lora exarata* Möller, 41c.  
*Lora beekii* Möller, 41c.  
*Admete couthouyi* Jay, 43a.  
*Chrysodomus solutus* Herrman, 37i, p. 47c.  
*Plicifusus krojeri* Möller, 37i.  
*Pyrulofusus deformis* Gray, 39.  
*Volutopsius* sp. (fragments), 37i, 40a.  
*Beringius* sp. (ovicapsule), 37i, 40a.  
*Ancistrolepis magnus* Dall, 37i, 40a.  
*Buccinum angulosum* Gray, 37i, 41, 43c.  
*Buccinum normale* Dall, 41.  
*Buccinum plectrum* Stimpson, 37i.  
*Buccinum polare* Gray, 37i, 43c.  
*Buccinum ciliatum* Fabricius, 37i, 40a.  
*Buccinum cyaneum* Bruguière, 37i, 41, 41h, 43c, 49r.  
*Tachyrhynchus erosus* Couthouy, 43a, 43b, 43c.  
*Neptunea clathrata* L., 43c.

- Trichotropis borealis* Broderip and Sowerby, 37i, 40a, 41, 41c, 43a, 43b, 43c.  
*Lamellaria grönländica* Möller, 41f (young).  
*Euspira pallida* Broderip and Sowerby, 48b, 37i.  
*Anaturoopsis purpurca* Dall, 37i, 41b.  
*Littorina rudis* variety *grönländica* Mörch, 44h.  
*Valvata lewisii* Currier, Bernard harbour and Victoria island.  
*Acauca emydia* Dall, 37i, 37g, 41c, 43c, 49g.  
*Margarites sordidus* Hancock, 41, 41c, 42a, 43a.  
*Margarites umbilicalis* Broderip and Sowerby, 41, 43c.  
*Margarites helicinus* Fabricius, 37b, 37a, 40a, 41.  
*Margarites albus* Gould, 43a.  
*Margarites harrisoni* Hancock, 43a, 49g.  
*Trachydeiraon albus* Linné, 43c.  
*Tonnicella uuraorea* Fabricius, 43c.

## SPECIES COLLECTED AT EACH STATION EAST OF THE MACKENZIE DELTA.

## STATION 35.

Beach at cape Bathurst, Northwest Territories.

- Serripes grönländicus* Gmelin.  
*Astarte borealis* Schumacher.  
*Musculus larvigatus* Gray.  
*Macoma calcarea* Gmelin.  
*Cyrtodaria kurriava* Dunker.  
*Saxicava arctica* Linné.

## STATION 37.

a. Stomach of *Erigonathus barbatus*, Bernard harbour, Dolphin and Union strait

- Margarites helicinus* Fabricius.  
 Egg capsules of unknown gastropods.  
*Musculus larvigatus* Gray.  
*Saxicava arctica* Linné.

b. Two to three fathoms, sandy mud, inner Bernard harbour.

- Margarites helicinus* Fabricius.  
 Eggs of nudibranch; loose opercula.  
*Musculus larvigatus* Gray.  
*Cyrtodaria kurriava* Dunker.

c. o. As b and stomach of *Erigonathus barbatus*, Bernard harbour.

Molluscan egg capsules.

i. p. At and around Bernard harbour.

- Mytilus edulis* L.  
*Musculus niger* Gray.  
*Musculus larvigatus* Gray.  
*Astarte borealis* Schumacher.  
*Cardium ciliatum* Fabricius.  
*Serripes grönländicus* Gmelin.  
*Liocypa beckii* Dall.  
*Mya truncata* Linné.  
*Saxicava arctica* Linné.

*Saxicava photadys* Linné.  
*Chrysodomus solutus* Herrman.  
*Chrysodomus* sp. (ovicapsules).  
*Plicifusus kroyeri* Möller.  
*Volutopsis* sp. (fragments).  
*Beringius* sp., (ovicapsules).  
*Ancistrolepis magnus* Dall.  
*Buccinum angulosum* Gray.  
*Buccinum normale* Dall.  
*Buccinum pectrum* Stimpson.  
*Buccinum polare* Gray.  
*Buccinum cyaneum* Bruguière.  
*Buccinum ciliatum* Fabricius.  
*Trichotropis borealis* Broderip and Sowerby.  
*Amauropsis purpurea* Dall.  
*Acmæa emydia* Dall.

g. Beach on Chantry island, Dolphin and Union strait.

*Acmæa emydia* Dall.

STATION 38.

Coronation gulf, beach of Couper island.

*Mytilus edulis* Linné.

STATION 39.

Beach at Inman river delta, Dolphin and Union strait, Northwest Territories.

*Pygulofusus deiformis* Gray.

STATION 40.

a. Beach at and around Bernard harbour.

(Specimens listed under Station 37i, p.)

u. Stomach of *Eriquatius barbatus*, Bernard harbour.

*Cylichna* sp. (fragment).

*Opercula* of *Buccinum* sp. indet.

*Margarites* sp. (fragment).

STATION 41.

Bernard harbour, 5 fathoms, sandy mud (outer harbour).

*Musculus larigatus* Gray.

*Serripes grönlandicus* Gmelin.

Eggs of nudibranchs and indeterminate mollusks.

*Philine finmarchica* M. Sars.

*Utricularia semen* Reeve.

*Cylichna nucleola* Reeve.

*Buccinum cyaneum* Brugnière (young shells).

*Buccinum angulosum* Gray.

*Buccinum normale* Dall.

*Trichotropis borealis* Broderip and Sowerby.

*Margarites helicinus* Fabricius.

*Margarites umbilicatus* Broderip and Sowerby.

*Margarites sordidus* Hancock.

Bernard harbour (outer harbour), 5 fathoms, muddy bottom.

*Musculus laevigatus* Gray.  
*Musculus niger* Gray.  
*Musculus corrugatus* Stimpson.  
*Astarte borealis* Schumacher.  
*Serripes grönlandicus* Gmelin.  
*Lioecyna viridis* Dall.  
*Mya truncata* Linné.  
 Nudibranch eggs.  
*Cylichna alba* Brown.  
*Lora exarata* Möller.  
*Lora beckii* Möller.  
*Buccinum* sp. (very young).  
*Trichotropis borealis* Broderip and Sowerby.  
*Margarites sordidas* Hancock.  
*Acnaea carydia* Dall (young).

f. Bernard harbour, in about 3 fathoms, mud.

*Musculus laevigatus* Gray (young).  
 Eggs of nudibranch.  
*Lamellaria grönlandica* Möller (young).  
*Acnaea carydia* Dall.

h. Beach, Bernard harbour.

*Buccinum cyathum* Brugnière.  
*Amaucopsis purpurea* Dall.

#### STATION 42.

d. Stomach of *Cottus scorpius*, Bernard harbour.

*Cylichna* sp. (fragm.).

e. n. Stomach of *Erignathus barbatus*, Bernard harbour.

Ovicapsules of *Buccinum* sp.  
 Loose opercula of *Buccinum* sp.  
*Utriculus* sp. (fragments).  
*Buccinum opercula* (loose).  
*Margarites sordidas* Hancock (fragments).

n. Specimens listed under Station 37i. p.

#### STATION 43.

a. Dolphin and Union strait, in about 50 fathoms, grey mud and stones (off  
 Cockburn point).

*Leda percala* Müller.  
*Arca glacialis* Gray.  
*Pseudanomia anderssoni* Dall.  
*Musculus laevigatus* Gray.  
*Musculus rernicosus* Midd. (young).  
*Musculus corrugatus* Stimpson.  
*Thyasira flexuosa* Forbes & Hanley (young).

*Macoma anelli* Dall.  
*Mya intermedia* Dall.  
*Saxicava arctica* Linné.  
*Philine funnarchica* M. Sars.  
*Admete couthouyi* Jay.  
*Trichotropis borealis* Broderip and Sowerby.  
*Tachyrhynchus crosus* Couthouy, variety.  
*Margarites sordidus* Hancock.  
*Margarites albulus* Gould.  
*Margarites harrisoni* Hancock.  
 Gastropod eggs.

b. Dolphin and Union strait, off Stapylton bay, in about 30 fathoms, mud.

Operculum of *Euspira* sp.  
*Leda (Portlandia) arctica* Gray.  
*Arca glacialis* Gray.  
*Musculus lavigatus* Gray.  
*Macoma anelli* Dall.  
*Lyonsia arenosa* Möller.  
*Lamellidoris* cf. *liturata* Beck. The bottom of the foot, ctenidia, and rhinophores orange; dorsum olive grey.  
*Trichotropis borealis* Broderip and Sowerby.  
*Tachyrhynchus crosus* Couthouy.

c. West of Cockburn point (Dolphin and Union strait) in 20 to 30 meters, grey mud, stones and algae.

*Musculus lavigatus* Gray.  
*Astarte verrucosa* Dall.  
*Astarte borealis* Schum.  
*Cardium ciliatum* Fabricius.  
*Liocyma viridis* Dall.  
*Macoma calcar* Gmelin.  
*Saxicava arctica* Linné.  
*Mya truncata* Linné.  
*Buccinum cagalusum* Gray.  
*Buccinum cyaneum* Bruguière.  
*Buccinum* sp. (very young).  
*Buccinum polare* Gray.  
*Neptunea clathrata* Linné.  
*Trichotropis borealis* Broderip and Sowerby.  
*Tachyrhynchus crosus* Couthouy.  
*Margarites umbilicalis* Broderip and Sowerby.  
*Acnava emydia* Dall.  
*Trachydermon albus* Linné.  
*Tomicella marmorata* Fabricius.  
 Molluscan egg-capsules.

STATION 44.

b. Cape Barrow, Coronation gulf (about 1 fathom).

*Mytilus edulis* Linné.  
*Saxicava arctica* Linné.  
*Littorina rudis*, var. *grönlandica* Möreb.  
*Lacuna* sp.

## STATION 47.

a. Beach of Richardson island, Coronation gulf, south side of Victoria island

*Mytilus edulis* Linné.

b. Beach of bay east of Lady Franklin point, Victoria island.

*Mytilus edulis* Linné.

*Astarte borealis* Schum.

c. Beach at Austin bay, Victoria island.

*Mytilus edulis* Linné.

*Musculus larigatus* Gray.

*Astarte borealis* Schumacher.

*Scoripes grönländicus* Gmelin.

*Mya truncata* Linné.

*Chrysodomus solutus* Herrman.

e. Beach, Forsyth bay, Victoria island.

Ovicapsules of *Chrysodomus* sp.

## STATION 48.

a. From Stomach of *Cottus quadricornis*, Goulburn island, Bathurst inlet, Northwest Territories.

*Utriculus* sp. (badly digested).

b. From stomach of tomcod, same locality.

Operculum of *Euspira* sp.

g. Beach at cape Lockyer, Coronation gulf.

*Buccinum* sp. ovicapsules.

## STATION 49.

g. From stomach of *Cottus scorpius*, Bernard harbour.

*Margarites harrisoni* Hancock (badly eroded).

*Acmaea emydia* Dall.

e. From stomach of *Somateria v-nigra*, Bernard harbour.

*Scoripes grönländicus* Gmelin (young, broken).

*Musculus niger* Gray (fragments).

*Buccinum cyaneum* Bruguière (fragments).

## STATION 50.

a. Beach at Cockburn point, Dolphin and Union strait.

*Saxicava arctica* Linné.

*Buccinum* sp. indet.

d. Young point, Dolphin and Union strait.

Eggs of two species of unknown gastropods.

f. Beach at and around Bernard harbour.

*Mytilus edulis* Linné.

*Astarte borealis* Schumacher.

STATION 53

e. Beach at cape Bathurst, Northwest Territories (see also sta. 35).

*Astarte borealis* Schumacher.

*Serripes groenlandicus* Gmelin.

*Mecoma calyrea* Gmelin.

STATIONS NOT NUMBERED.

Between cape Baring and Pullen point, Victoria island.

*Lymnaea caperata* Say, = *rabli* Beck, = *palustris* Müller, mutation.

Lake near Bernard harbour, from stomach of *Cristivomer namuygensh.*

*Lymnaea palustris rabli* Beck.

*Pisidium rotundatum* Prime.

Pond near Colville mountains, Victoria island.

*Aplexa hypnorum* L.

Stomach of *Salvelinus*, Bernard harbour.

*Pisidium rotundatum* Prime.

Lake opposite Bernard harbour

*Aplexa hypnorum* L.

Water-hole on tundra at cape Bathurst, Northwest Territories.

*Aplexa hypnorum* L.

Pond at Bernard harbour.

*Aplexa hypnorum* L.

Pond east of Bernard harbour—D. Jenness, collector.

*Physa jennessi* Dall.

Creek at Bernard harbour.

*Aplexa hypnorum* L.

Under stone at Bernard harbour.

*Agriolimnaea hyperboreus* Westerlund.

Lake west of Bernard harbour

*Pisidium rotundatum* Prime.



## Creek at Bernard Harbour.

*Lymnaea caeperata* Say (on the mud).  
*Aplexa hypnorum* Linné (on plants).  
*Valvata lewisii* Currier.

## Lake near point Williams, Victoria island.

*Lymnaea caeperata* Say.  
*Valvata lewisii* Currier.

## Lake between point Williams and mount Arrowsmith, Victoria island.

*Lymnaea caeperata* Say.

## NOTES AND DESCRIPTIONS OF NEW FORMS.

Genus *Leda* Schumacher.Subgenus *Portlandia* Mörch.*Leda (Portlandia) collinsoni*, n. sp. (Pl. II, figs. 3, 4.)

Shell small, inflated, slightly inequilateral, olivaceous in the young, tending to a dark brownish tint in the adult, the periostracum strong, minutely evenly vermiculately wrinkled all over; anterior end shorter, evenly rounded; posterior portion with a rounded ridge extending to the posterior extremity where it forms a rounded point, the shell being compressed above and below this ridge and the margin below slightly incurved and retractorily obliquely truncate; the basal margin is slightly rounded; there is a small lanceolate impressed area in front of the low, slightly opisthocelous beaks, and a large one behind them, but there is no circumscribed lunule or escutcheon; the interior is white, there is a large triangular resilifer below the beaks and eleven anterior and eight posterior hinge teeth; no indications of a pallial sinus appear on the specimens but the adductor scars are large and conspicuous. Height of specimen 6; length 8.5; diameter 4 mm. Station 27s., off Collinson point, Alaskan Arctic coast, in three fathoms, sandy bottom. Many specimens.

This is a remarkable litt. shell, quite distinct from its nearest relatives. It is of the same general type as *Leda (Portlandia) arctica* Gray, but much shortened up, smaller and more acute behind in proportion to its size. The curious vermiculation of the surface is probably in great part if not entirely a function of the periostracum. Catalogue Nos. 1150 and 1151 (Ottawa). Types and co-types.

Genus *Pseudamusium* H. & A. Adams.*Pseudamusium andersoni*, n. sp. (Pl. II, figs. 7, 8.)

Shell suborbicular, translucent white, extremely thin and fragile; hinge line straight, the ears subequal, the right anterior ear slightly convexly striated but with no perceptible byssal notch or etenolium; the right valve with a few faint concentric undulations near the umbo, beyond that smooth, near the lower margin concave and appressed against the margin of the opposite valve; left valve more convex, equilateral, smooth, polished with a few faint irregular radial markings near the base. Interior polished, the ligament very small.

The soft parts in alcohol are small, greenish, the margin of the mantle with very numerous small blackish eye spots, the gills and foot very small.

Length of hingeline 9.5; of disk 24; height 22; max. diameter 5 mm.

Station 13a. Dredged in about 50 fathoms, mud and pebbles in Dolphin and Union strait, Northwest Territories. Many specimens.

This species belonging to the group of *P. vitreus*, *P. grönlandicus* and their allies, is distinguished from any of them by the entire absence of any regular radial sculpture or ornamentation. Denude *P. randolphi* of the Pacific fauna of its radial rows of minute prickles and it would approach the present species. The only other quite smooth species of the group known to me, belongs to the Magellanic fauna.

The species is named after Dr. R. M. Anderson, chief of the Southern Party, of the expedition.

Catalogue Nos. 4235, 4236 (Ottawa). Types and co-types.

#### Genus *Macoma* Leach.

##### *Macoma oneilli*, n. sp. (Pl. II, fig. 1.)

Shell small, thin, oval, compressed, inequilateral, slightly inequivalve, the anterior part more than twice as long as the part behind the umbones; white covered with a debiscent yellowish-olive periostracum; beaks hardly perceptible, ligament prominent, posterior end with an extremely narrow compressed dorsal margin corresponding to the fold of most species; anterior and posterior ends subequally rounded; dorsal and basal margins nearly equally arcuate; interior chalky white, the linge with two small but well-marked teeth in each valve, the anterior left cardinal bifid; pallial sinus rounded behind, coalescent below, a little smaller in the right valve than in the other; muscular impressions subequal and of moderate size. Length of shell 21; length in front of the vertical from the beaks 15; height 15; diameter 6 mm. Catalogue No. 4240 (Ottawa).

Station 43a b. Dredged in Dolphin and Union Strait in 30 to 50 fathoms, mud and pebbles. Two specimens.

This species is remarkable for its evenly oval shape and flattened valves devoid of the usual posterior twist. Among the various species of *Macoma* in the Arctic seas it approaches nearest to *M. moesta* Deshayes, but is quite distinct. It is named in honour of Mr. J. J. O'Neill of the party.

#### Genus *Physa* Draparnaud.

##### *Physa jennessi*, n. sp. (Pl. II, fig. 2.)

Shell small, thin, of four whorls, of a dull amber yellow without a darker streak behind the outer lip; apex rounded, rather blunt, surface polished with occasional incremental irregularities and a microscopic spiral striation obsolete in places; spire shorter than the aperture, the last whorl much the largest, the suture not deep, the whorls moderately rounded; outer lip sharp, inner lip slightly erased and whitened; pillar straight, thickened where it meets the body, with a little depression behind it. Length 8; length of aperture 5; max. diameter 5 mm.

Ponds near Bernard harbour, rare. Collected by Mr. D. Jenness of the party, in whose honour it is named. Catalogue Nos. 4019, 4020 (Ottawa).

This is remarkable as the most northern species known of the genus. By some unexplained factor, perhaps connected with glaciation, the genus *Physa* is not represented in the boreal region of Asia or America between the western Siberian boundary and cape Bathurst. It occurs in southern Siberia among the headwaters of the Amur river. In America the most northerly localities reported are Moose Factory on Hudson bay, and Great Slave lake. The allied genus *Aplyca* seems to take the place of *Physa* in all the boreal region above referred to. When we consider that the large Lymnaeas of the type of *L. stagnalis*

and *Aplexa hypnorum*, abound to the very verge of the Polar sea, it seems difficult to account for the absence of *Physa*, elsewhere associated with them.

Genus **Lora** Gistel.

**Lora trevelliana** Turton.

*Pleurotoma trevellianum* Turton, Mag. Nat. Hist., VII, p. 351, 1811.

*Mangelia trevelliana* Forbes & Hanley, III, p. 452, pl. 112, f. 12, 1853.

*Pleurotoma reticulata* Brown, 1827, not of Renieri, 1804.

Station 27s. Off Collinson point, Alaskan Arctic coast, in three fathoms.

Also on the Murman and North Atlantic coast.

Several specimens apparently not quite full grown were obtained. They agree with British specimens except that the sculpture is more feeble than in the completely adult individuals. Jeffreys notes that American specimens are smaller than those from Britain, as is also the case with some other mollusks.

Genus **Admete** Kröyer.

**Admete elongata** Leche.

*Admete viridula* Fabr. var. *elongata* Leche, K. Svenska Vet. Ak. Handl. Bd. 16, No. 2, p. 48, pl. 1, fig. 13, 1878.

A badly eroded specimen was obtained at station 23, off the Sea Horse islands, Alaska, N. Latitude 70° 24', in 9-10 fathoms, sandy bottom. This appears to be the shell described in the report of the Swedish expedition to Novaya Zemlia and the Yenisei in 1875 and 1876 under the name above cited. If it is really an *Admete* the plaits on the pillar are obsolete, but the specimen is too imperfect to base a dogmatic opinion upon. Long since it was pointed out that the type specimen of Fabricius' shell is a *Bela*, a fact which I have verified by personal inspection. Also that the *Admete* was first named *costellifera* by J. Sowerby in 1818 from a Crag fossil. The present shell has much the aspect of a *Trichotropis*, and certainly has not the least connection with *Admete costellifera*, or *Admete viridula* anet. non Fabricius.

Genus **Plicifusus** Dall.

**Plicifusus johanseni**, n. sp. (Pl. III.)

Shell fusiform, whitish, with six or more slightly rounded whorls exclusive of the (lost) nucleus; suture distinct, not appressed or channelled; but rather deep; the first three or four whorls are feebly axially plicate, the obscure riblets anteriorly protractive and varying in number up to ten; very faint irregular traces of them, or some of them, may appear on the last whorl; spiral sculpture of numerous straplike flat spirals made duplex by a medial groove and separated by a much narrower interspace crossed by fine incremental lines; canal short, slightly recurved; outer lip arcuate, somewhat produced below the periphery; body and pillar with a coating of enamel; pillar attenuated in front, nearly straight. Length of (decollate) specimen 52; of last whorl 39; of aperture 26; max. diameter 22 mm.

Station 24. Point Barrow sandspit, Alaska. Also collected at Ice Cape, Alaska, by Capt. Everett Smith, in 1871, who presented a specimen to the U. S. National Museum.

The expedition collected a dilapidated specimen at Point Barrow, but I have drawn up the description from the better preserved individual in the collection of the U. S. National Museum. Catalogue No. 4117 (Ottawa).

The species is perhaps nearest to *P. esychus* Dall, from the same region, in which the spire is proportionately longer, the whorls more inflated, and the spiral sculpture less coarse.

It is named in honour of Mr. Frits Johansen, naturalist of the expedition, and to whose energy the larger part of the collection is due.

Genus *Volutopsius* Mörch.

*Volutopsius stefanssoni*, n. sp. (Pl. I).

Shell large, heavy, rude, pinkish brown with a rosy protoconch and five rapidly enlarging whorls; nucleus swollen, large, irregular, of about two whorls, blunt at the apex; suture distinct, not channelled; whorls inflated, with a high rounded shoulder and five or six obscure swellings at the shoulder which do not become definite ribs; there is no spiral sculpture, but the lines of growth are rude and occasionally lamellose, especially toward the aperture in senile individuals; canal short, wide, slightly recurved; aperture wide, the outer lip thickened but hardly reflected, throat whitish; body in the mature shell with a layer of whitish enamel which extends to the end of the pillar, which is arcuate, shorter than the aperture and obliquely truncate in front. Height of shell 114; max. diameter 65; height of last whorl 87; of aperture 75 mm.

Station 24. Point Barrow, Alaska, sandspit. Also collected by the U. S. Bureau of Fisheries at various stations from the Pribilof and Nunivak islands, Bering sea, northward to the Arctic ocean, in 25 to 56 fathoms. Catalogue 4128 (Ottawa).

Three fragmentary or immature specimens were obtained by the expedition at Point Barrow; a description has been prepared from an adult in the collection of the U. S. National Museum. The shells, as in many other species, sometimes show narrow oblique or zigzag ridges due to some cause not yet determined, but probably abnormal. The species in a general way recalls *V. castanea* Mörch, a much smaller species common on the Aleutian islands. The species is named in honour of the commander of the Canadian Arctic Expedition.

Genus *Margarites* Leach.

*Margarites ecarinatus*, n. sp. (Pl. II, figs. 5, 6).

Shell pinkish grey, depressed, with about five rapidly enlarging whorls; nucleus minute, glassy; subsequent whorls moderately inflated, separated by a deep but not channelled suture, having a rounded periphery, a wide, completely pervious umbilicus, and a large, very oblique, iridescent aperture. Axial sculpture of very fine silky incremental lines; spiral sculpture of low flattish threads separated by narrower interspaces sometimes carrying a finer intercalary thread; this sculpture is carried over the base but is absent from the walls of the wide umbilicus; aperture rounded, very oblique, the margins sharp, hardly meeting over the body except by a thin layer of enamel. Operculum brown, thin, multispiral. Height of shell 8; max. diameter 15 mm. Catalogue No. 4071 (Ottawa).

Station 22, in N. Latitude 69° 35' and W. Longitude 163° 27', dredged in 11-12 fathoms, sandy bottom, 1 specimen. Also represented in the U. S. Nat. Museum by specimens collected in Bering sea, among the Aleutian islands, and as far to the east and southward as Port Althorp, Alaska.

This species is nearest to *M. vorticiferus* Dall, which has about the same range, but presents constant differences. In *vorticiferus* the spire is more elevated and the whorls flattened and carinate at the periphery; the spiral sculpture is generally finer and the axial sculpture coarser. Its measurements are: height 15; max. diameter 20 mm.

Genus *Amicula* Gray.*Amicula vestita* Sowerby.

*Chiton vestitus* Sowerby, Zool. Journ. IV, p. 368, 1829; Couch, Ill., figs. 128, 128a, 1839.

*Amicula vestita* Dall, Proc. U. S. Nat. Mus. I, p. 369, 1879; Sci. Results Expl. of Alaska, p. 89, 1879.

Station 22, off cape Lisburne, Arctic ocean, in North Latitude 69° 35' and West Longitude 163° 27', in 11-12 fathoms, rock and sand bottom. Also found in Bering sea northward from the Pribilof islands and on the Atlantic side from the Arctic south to cape Cod on the American coast.

## NOTES ON THE LAND AND FRESHWATER MOLLUSKS.

By Mr. FRITS JOHANSEN.

(Copied from Journal I.)

Nome, Alaska: A few naked snails (*Agriolimax hyperboreus*) 1916.  
and *Succinea chrysis* collected under loose stones, boards, etc., on August 25.  
tundra.

Teller, Port Clarence, Alaska: A few snails (*Succinea chrysis*) 1913.  
collected under old sacks, tins, etc., on tundra near the town. July 31.

Teller, Alaska: Many fresh-water snails (*Aplexa hypnorum*) August 3.  
collected in brackish tundra-pond between the lake and the sea near the town.

Sadlerochit river, Camden bay, Arctic Alaska: Hot creek, November  
tributary to Sadlerochit river, about 25 miles inland. On the free 67.  
(especially upper) sides of the submerged moss covered stones in the creek bed were many small snails (*Lymnaea*) attached in hundreds; these snails besides other snails (*Aplexa*) and small clams (*Pisidium rotundatum*) were also common between the grass on the sandy, stone-free bottom of the creek in shallower water.

Collinson point, Camden bay, Arctic Alaska: In a completely 1914.  
melted tundra-pond I collected a few fresh-water snails (*Aplexa* June 13.  
with the soft parts black) on grass stems.

Collinson point, Camden bay, Arctic Alaska: In a waterhole 1914 5  
on the tundra I collected some smaller fresh-water snails (*Aplexa* June 20  
*hypnorum*, young) soft-naked part blue-gray, on grass stems.

Collinson point, Alaska: In a waterhole in and near the beach, July 11  
I collected the common fresh-water snails (adult *Aplexa*).

Konganevik, Camden Bay, Arctic Alaska: Many fresh-water June 25 6.  
snails (*Aplexa*) collected in the littoral region of a big lake inland July 2.  
among plants. Found about half a dozen about 15mm. long, black, naked snails (*Agriolimax hyperboreus*) feeding on the pollen of catkins of the common low willow (*Salix* sp.) in the coastal tundra swamp. It was plainly to be seen that the snails really feed on only the pollen, as the yellow anthers were missing or partly missing on the catkins the animals were on, so that only the red filaments were left. These snails had their creeping sole more brownish; and the buccal mass when protruded, showed white, dotted with black on the outer margin; otherwise the animal was completely black. The moist weather during these days probably brought these snails forth from their hiding-places under vegetation, etc.; I tried to keep them alive, but a couple of days later they all died. This is the first time I have found naked land-snails on the

- Alaskan Arctic coast. The species is the same as those from Nome, Alaska, and the one from Bernard harbour, N.W.T.
- July 4. Konganevik, Camden Bay, Alaska: On the coastal tundra near the sea was a pond with rich vegetation and a broad fringe of washed-up plant debris at its edge. On this fringe were many empty shells of the common fresh-water snail (*Aplexa*).
- May 15. Demarcation point, Alaskan Arctic Coast: Creeping over the mud-bottom of a just melted pond on the coastal tundra were a couple of *Aplexa*, the common fresh-water snails.
- August 14. Herschel island, Yukon Territory, Arctic Canada: In a pond (not the same as 1916, but both ponds about 100 feet elevation) situated inland on the east end of the island, I collected many 1 to 8 mm. long, brown *Aplexa*.
1916.  
July 29.  
August 2. Same locality (Herschel island): In a pond (not the same as 1914, but both ponds at about 100 feet elevation) situated on the tundra swamp inland at the east end of the island, I collected several fresh water snails (*Aplexa*) among the dense growth of *Hippuris*, etc.
1911.  
May 28. Iglukitaktok, West branch of Mackenzie Delta (68° 20' lat. N., 135° 26' long. W.): J. J. O'Neill collected *Lymnaea appressa* floating in the fresh water flooding the ice, near the marshy margin of a small lake.
9116.  
July 26. Cape Bathurst, Northwest Territories, Canada: The common fresh water snails (*Aplexa*) collected in waterholes in the tundra back of the sandspit.
1915.  
June 26.  
1916.  
April.  
1915.  
June 28.  
Aug. 6. Bernard harbour, Northwest Territory, Canada: Lake trout (*Cristivomer namaycush* W.) caught by Eskimo in lakes around here had in their stomachs about a dozen 2-5 mm. clams. The youngest clams had the shell pure white; the older ones had this greyish (*Pisidium rotundatum*). In the different larger ponds I found the shallow-water snails (*Aplexa*) attached to the grass stems or as empty shells on the mud-bottom. Shell brown; protruding, soft body-part grey; head almost black.
- June 28. Bernard harbour: From stomach of lake-trout, caught as June 26, 1 snail (*Lymnaea rahli*) and many *Pisidium rotundatum*.
- August 16. Under a stone on moist ground (tundra) inland, I found a 15 mm. long brown, naked Pulmonate snail (*Agriolimax*). Dorsal side (especially mantle-shield, tentacles and their base, and body back of the mantle) black-brown, getting lighter brown laterally, until the whitish (grey) footsole is reached. The rainy weather these days has probably brought this snail out from its hiding place. This is the first and only naked snail I have found east of Mackenzie delta.
- September 1. Fungus (*Agaricus*?) found gnawed by snails.
- October 1.  
Dec. 20. The trout (*Salvelinus marstoni*) caught by us in the big lake south of the harbour, often had in their stomachs many of the common small fresh-water clams (*Pisidium*).
1916.  
May 6. Same locality (Bernard Harbour): A few *Pisidium* from bottom of big lake south of harbour were collected.
- June 23-24. A fresh-water snail (*Aplexa*) collected in the big lake south of the harbour.
- July 5. Many of the common fresh-water snails (*Aplexa*) and a few *Lymnaea* and *Physa* were collected in the shallow bights at the outlet of the big creek from the big lake in valley back of the harbour. Many empty shells of *Lymnaea rahli* and *Aplexa hypnorum* and *Vobrata lewisii* found washed up at the mouth of another big creek

End of June  
Beginning of  
July,  
1915.  
August.

at the southwest end of the same lake; up in this creek I also collected many living *Lymnaea* and *Aplexa*.

The fresh-water shells *Aplexa* and *Physa* collected by D. Jenness east of Bernard Harbour.

Victoria island, Northwest Territories, Canada: The following fresh-water snails were collected by D. Jenness:

1. From lakes near point Williams, August 8, 1913: *Lymnaea rahli* and *Valvata lewisii*.
2. From lakes near Mt. Arrowsmith, middle of August: *Lymnaea rahli*.
3. From pond inland near Point Williams, August 15: *Aplexa*.
4. From creek between cape Kendall and Cape Boring, August 31: *Aplexa hypnorum*; *Lymnaea rahli*.

The Eskimo (Coronation Gulf dialect) name for these *Lymnaea* and *Valvata* is "Siuterkok" (derived from the word for ears). The same name is used for *Buccinum* and other snails.<sup>1</sup>

The common, small fresh-water clam (*Pisidium rotundatum*) is called "Uvillunniak" (= the small clam) by the Coronation Gulf Eskimo. Marine bivalves called "Uvillok."<sup>2</sup>

<sup>1</sup>Any spiral mollusks are called sutukayuk in Mackenzie Eskimo dialect -- R. M. Anderson.  
<sup>2</sup>Also called *uvillok* in Mackenzie dialect; *abgat* in Kotzebue Sound dialect -- R. M. Anderson.

#### REFERENCES TO PLATES.

##### PLATE I.

Fig. 1. *Colubopsis stefanssoni* Dall, nat. size; p. 22v.

##### PLATE II.

Fig. 1. *Macoma oncelli* Dall, nat. size; p. 20v.

Fig. 2. *Physa jennessi* Dall,  $\times 3$ ; p. 20v.

Fig. 3. *Leda (Portlandia) collinsoni* Dall; inside view, nat. size; p. 19v.

Fig. 4. The same, outside view; p. 19v.

Fig. 5. *Margarites carinatus* Dall, upper surface, magnified one half; p. 22v.

Fig. 6. The same in profile.

Fig. 7. *Pseudamysium andersoni* Dall, left valve, nat. size; the dark center of the disk is the remains of the animal matter; p. 19v.

Fig. 8. The same, right valve.

##### PLATE III.

Fig. 1. *Plicifusus johansoni* Dall,  $\times 2$ ; p. 21v.

## APPENDED REPORT.

**The Pleistocene Fossils collected on the Arctic Coast of the  
Yukon and Northwest Territories by the Canadian  
Arctic Expedition of 1913-18.**

By WILLIAM HEALEY DALL.<sup>1</sup>

The fossils listed in this report are without doubt all Pleistocene. They belong to species now living in adjacent waters which form part of the Western Arctic fauna. The collection was made largely by Mr. J. J. O'Neill, and from the notes on the labels, the horizon in which the fauna occurs seems to be represented over a very large extent of the Arctic coast from Herschel Island, Yukon Territory to Bathurst inlet, Northwest Territories, and to be identical with that described by Schrader<sup>2</sup> under the name of the Gubik sand, on the Arctic shore of Alaska.

It is rather surprising that the Pliocene Nuwuk formation which in Alaska underlies the Gubik sand in many places, with a very characteristic and interesting fauna, is not represented in the Canadian collection.

The material from Herschel island and from the Mackenzie River delta is in a matrix which in each case is of fine grey silt which immediately dissolves in water, but has when nearly dry a certain hard toughness, and when quite dry breaks up into angular fragments. It contains, intermixed with Pleistocene marine shells, a proportion of rock fragments or marine fossils of the Devonian formations so extensively developed in the Yukon Territory to the south and which may have been transported on ice cakes or in the roots of uprooted trees in the spring freshets. Three pieces of brown sandstone from the delta (No. 1885) contain Devonian brachiopod remains, and small palæozoic brachiopods, possibly young *Meristella*, were found loose in the silt from Herschel island.

The following are the species represented in the collection from each of the numbered stations—

Station 1926, south side Herschel island, Yukon Territory—

- Chrysodomus* cf. *saturus* Martyn (fragm.).
- Buccinum tenue* Gray (fragm.).
- Natica* sp. cf. *clausa* Brod. & Sby. (very young).
- Neptunca beringi* Dall (fragm.).
- Tachyrhynchus erosus* Couthouy.
- Astarte borealis* Schumacher.
- Astarte arctica* Gray.
- Astarte fabula* Reeve.
- Astarte alaskensis* Dall.
- Cyrtodaria kurriana* Dunker.

Station 1942, east side of Herschel island—

- Natica* sp. (very young).
- Astarte borealis* Schumacher.
- Astarte fabula* Reeve.
- Astarte alaskensis* Dall.

<sup>1</sup>By permission of the Director of the United States Geological Survey.

<sup>2</sup>F. C. Schrader, United States Geological Survey, Professional Paper No. 20, Washington, 1904, p. 20 *et seq.*

For comparison with this list the reader is referred to J. Gwyn Jeffrey's list of Pleistocene fossils found in the northeastern part of the Arctic Archipelago—(The Post-tertiary fossils procured in the late Arctic Expedition; with notes on some of the Recent or Living Mollusca from the same Expedition. *Annals Natural History*, vol. 20, ser. 4, 1877, pp. 229-388.)



## Station 3486, Kay Point, Yukon Territory

*Dentalium* sp. (fragm.).  
*Natica* sp. (young fry).  
*Leda* (*Portlandia*) *arctica* Gray.  
*Musculus* sp. (fragm.).  
*Pseudamysium* sp. (fragm.).  
*Macoma sabulosa* Spengler.  
*Astarte borealis* Schumacher.  
*Astarte fabula* Reeve.  
*Saxicava arctica* Linné (fragm.).

## Station 5282, Arctic sound, Northwest Territories —

*Cardium ciliatum* Fabricius.  
*Serripes grönlandicus* Gmelin.  
*Macoma calcarea* Gmelin.  
*Mya truncata* Linné.  
*Saxicava pholadis* Linné.

## Station 5283, east side Coppermine river, Northwest Territories

*Leda* (*Portlandia*) *arctica* Gray.  
*Cardium ciliatum* Fabricius.  
*Macoma brota* Dall.

## Station 5284, west side Coppermine river —

*Leda pernula* Muller.  
*Cardium ciliatum* Fabricius.  
*Macoma calcarea* Gmelin.  
*Macoma balthica* Linné.  
*Macoma brota* Dall.

## Station 5285, Victoria island, Northwest Territories —

*Macoma inconspicua* Broderip & Sowerby.  
*Mya truncata* Linné.  
*Saxicava pholadis* Linné.

## Station 5286, Bernard harbour, Dolphin and Union strait, Northwest Territories—

*Mytilus edulis* Linné.  
*Astarte borealis* Schumacher.  
*Cardium ciliatum* Fabricius.  
*Serripes grönlandicus* Gmelin.  
*Mya intermedia* Dall.  
*Balanus* sp. (fragment).

## Station 5287, Kogluktualuk river, Coronation gulf, Northwest Territories—

*Leda* (*Portlandia*) *arctica* Gray.  
*Macoma calcarea* Gmelin.

## Station 5288, Port Epworth harbour, Coronation gulf—

*Mya?* (fragment).

## Station 5289, south end of Port Epworth, Coronation gulf—

*Saxicava pholadis* Linné.  
*Mya truncata* Linné.  
*Balanus* sp. (fragment).

## Station 5290, mouth of Inman river, Dolphin and Union strait, Northwest Territories—

*Mytilus edulis*, Linné.  
*Macoma calcarea* Gmelin.  
*Saxicava arctica* Linné.  
*Saxicava pholadis* Linné.  
*Mya truncata* Linné (young).

- Station 5291, south side Bernard harbour, Northwest Territories—  
*Astarte borealis* Schumacher.  
*Saxicava arctica* Linné.  
*Buccinum* sp.? (fragment).
- Station 5293, north side Bernard harbour, Northwest Territories—  
*Aenaca cingula?* Dall.  
*Mytilus edulis* Linné.  
*Astarte borealis* Schumacher.  
*Macoma calcarca* Gmelin.  
*Saxicava pholadis* Linné.  
*Saxicava arctica* Linné.  
*Mya truncata* Linné.  
*Mya intermedia* Dall.  
*Balanus* sp. (fragment).
- Station 5294, cape Barrow, Bathurst inlet, Northwest Territories, at 150-foot elevation—  
*Macoma calcarca* Gmelin (fragments).  
*Saxicava pholadis* Linné.  
*Mya truncata* Linné.
- Station 5295, Bernard harbour, Northwest Territories—  
*Astarte borealis* Schumacher.
- Stations 5298, 5299, Bernard harbour, Northwest Territories—  
*Cardium ciliatum* Fabricius.  
*Scirripes grönländicus* Gmelin.  
*Astarte borealis* Schumacher.  
*Macoma calcarca* Gmelin.  
*Saxicava pholadis* Linné.  
*Saxicava arctica* Linné.  
*Mya truncata* Linné.
- Station 5300, Cape Lyon, Darnley bay, Northwest Territories—  
*Saxicava pholadis* Linné.
- Station 5301, 15 miles southwest of cape Lyon, Darnley bay, Northwest Territories—  
*Astarte* sp., indet.
- Station 5302, Bernard harbour, Northwest Territories—  
*Astarte borealis* Schumacher.
- Station 5497 (40a) Five miles inland from Bernard harbour, Northwest Territories—  
*Saxicava pholadis* Linné.  
*Mya truncata* Linné.

All of the thirty species recorded from the several local collections given above are included in the following systematic list:—

## SYSTEMATIC LIST.

<i>Leda (Portlandia) arctica</i> Gray	Sta. No.	5283, 5287
<i>Leda pernula</i> Müller	"	5284
<i>Pseudomusium</i> sp.	"	3486
<i>Mytilus edulis</i> Linné	"	5286, 5290, 5293
<i>Musculus</i> sp.	"	3496
<i>Astarte alaskensis</i> Dall	"	1926, 1942
<i>Astarte fabula</i> Reeve	"	1926, 1942, 3484
<i>Astarte arctica</i> Gray	"	1926
<i>Astarte borealis</i> Schumacher	"	5286, 5291, 5293, 5295, 5298, 5299, 5302
<i>Astarte</i> sp., indet.	"	5301
<i>Cardium ciliatum</i> Fabricius	"	5282, 5283, 5283, 5286, 5298
<i>Scirripes grönländicus</i> Gmelin	"	5299
	"	5282, 5286, 5298

<i>Musonia calcarea</i> Gmelin	Sta. No.	5282	5281	5287	5290	5283
		5291	5298			
<i>Musonia sabulosa</i> Spengler	"	3186				
<i>Musonia bathura</i> Linné	"	5281				
<i>Musonia brata</i> Dall	"	5283	5281			
<i>Musonia inconspicua</i> Broderip & Sowerby	"	5285				
<i>Mya truncata</i> Linné	"	5282	5285	5289	5290	5293
	"	5291	5197	5298	5299	
<i>Mya calymenia</i> Dall	"	5286	5293			
<i>Saxicava arctica</i> Linné	"	5290	5291	5293	5299	
<i>Saxicava phoeadis</i> Linné	"	5282	5285	5289	5290	5293
	"	5291	5197	5298	5299	5300
<i>Cyrtodaria kurriana</i> Dunker	"	1926				
<i>Dentalium</i> sp.	"	3186				
<i>Chrysodonus</i> cf. <i>saturus</i> Martyn	"	1926				
<i>Buccinum</i> sp. ? (fragment)	"	5291				
<i>Buccinum</i> <i>leuco</i> Gray	"	1926				
<i>Neobuccina heringi</i> Dall	"	1926				
<i>Tachygychisus erosus</i> Conthouy	"	1926				
<i>Natica</i> sp. cf. <i>clausa</i> Brod.	"	1926				
<i>Acmaea emydia?</i> Dall	"	5293				
<i>Balanus</i> sp. (fragment)	"	5286	5	6	5293	

## LIST OF COLLECTING STATIONS (WEST TO EAST)

- 1912 - East side of Herschel island, Yukon Territory. Elevation up to 200' A T
- 1926 - South side of Herschel island, Yukon Territory. The island is made up of silty mud, with more or less gravel mixed. Fossils were collected from 100 feet above sea level downward
- 3186 - From sandy mud cliffs on Kay point, Arctic coast, Yukon Territory. East side of point, and 3 miles from the end. Sand and sandy mud, almost clay, with thin layers of gravel. Sandy mud contains pebbles stratified, and cross-bedded deposits. Apparently part of the Anaktuvik feature. Collected from a hillside (100') at elevation 25' A T
- 5300 - Twenty-five miles southwest of cape Lyon, Dandley bay, Northwest Territories. From gravel, 50 feet elevation, on coast.
- 5301 - From debris on slope of partly consolidated mud underlying gravel near top of the former Little river (Brook river), Northwest Territories. Ten miles from mouth, about 15 miles south-west of cape Lyon. Elevation about 200' A T
- 5290 - Mud-gravel about the mouth of Inman river 60 feet to 200 feet, Dolphin and Union strait, Northwest Territories.
- 5302 - From 15 feet elevation on north side of Bernard harbour, south side of Dolphin and Union strait, Northwest Territories
- 5298-5299 - Sand and gravel terraces from 15 feet above high-water, south side Bernard harbour winter quarters, Dolphin and Union strait.
- 5295 - North side of Bernard harbour, 15 feet above high-water level.
- 5293 - North side of Bernard harbour, from 30 feet above high-water level
- 5291 - South side of Bernard harbour, 30 feet above high-water level
- 5286 - South side of Bernard harbour. From greenish-grey sand in cut banks at high-water level.
- 5497 - Five miles south of Bernard harbour, about 12 feet elevation
- 5285 - South-west part of Victoria island, Northwest Territories. Mud formation between the Colville hills and south coast. D. Jenness, collector. Occurrence general up to 300 feet, none seen higher, although the formation goes above 800 feet. Jenness
- 5281 - West side of Coppermine river, 5 miles from mouth, from claybanks 50 feet high. Altitude above present level of river, 3 to 15 feet. Ice-covered. Striking in the clay on limited stretch of banks. More shells seen higher up the bank.
- 5283 - East side of Coppermine river, Northwest Territories, about 6 miles from the mouth in river banks 50 feet in height.
- 5289 - Mud-gravel of Dolomite hills, south end of Port Epworth, Coronation gulf, 320 feet elevation.
- 5288 - East side of Port Epworth harbour, Coronation gulf, Northwest Territories. From mud-gravel at 500 feet elevation.
- 5287 - Mud-gravel formation, 11 miles up Koghakruahik river, Coronation gulf. Twenty-five feet above river bed.
- 5298 - Cape Barrow, Bathurst inlet, Northwest Territories, 150 feet elevation.
- 5298



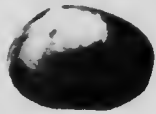
PLATE No. 1.

CANADIAN ARCTIC EXPEDITION, 1913-16. (*W. H. Dall*).





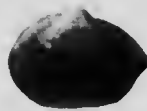
CANADIAN ARCTIC EXPEDITION, 1913-16. (W. H. Dall).



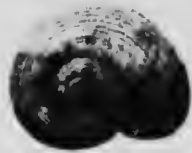
1



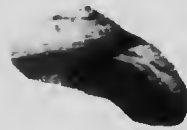
3



4



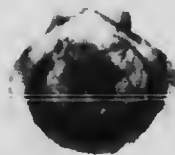
5



6



7



8





PLATE No. 3.

CANADIAN ARCTIC EXPEDITION, 1913-16. (*W. H. Dall*).



