

**CIHM
Microfiche
Series
(Monographs)**

**ICMH
Collection de
microfiches
(monographies)**



Canadian Institute for Historical Microreproductions / Institut canadien de microreproductions historiques

© 1998

Technical and Bibliographic Notes / Notes techniques et bibliographiques

The Institute has attempted to obtain the best original copy available for filming. Features of this copy which may be bibliographically unique, which may alter any of the images in the reproduction, or which may significantly change the usual method of filming are checked below.

- Coloured covers / Couverture de couleur
- Covers damaged / Couverture endommagée
- Covers restored and/or laminated / Couverture restaurée et/ou pelliculée
- Cover title missing / Le titre de couverture manque
- Coloured maps / Cartes géographiques en couleur
- Coloured ink (i.e. other than blue or black) / Encre de couleur (i.e. autre que bleue ou noire)
- Coloured plates and/or illustrations / Planches et/ou illustrations en couleur
- Bound with other material / Relié avec d'autres documents
- Only edition available / Seule édition disponible
- Tight binding may cause shadows or distortion along interior margin / La reliure serrée peut causer de l'ombre ou de la distorsion le long de la marge intérieure.
- Blank leaves added during restorations may appear within the text. Whenever possible, these have been omitted from filming / Il se peut que certaines pages blanches ajoutées lors d'une restauration apparaissent dans le texte, mais, lorsque cela était possible, ces pages n'ont pas été filmées.
- Additional comments / Commentaires supplémentaires:

L'Institut a microfilmé le meilleur exemplaire qu'il lui a été possible de se procurer. Les détails de cet exemplaire qui sont peut-être uniques du point de vue bibliographique, qui peuvent modifier une image reproduite, ou qui peuvent exiger une modification dans la méthode normale de filmage sont indiqués ci-dessous.

- Coloured pages / Pages de couleur
- Pages damaged / Pages endommagées
- Pages restored and/or laminated / Pages restaurées et/ou pelliculées
- Pages discoloured, stained or foxed / Pages décolorées, tachetées ou piquées
- Pages detached / Pages détachées
- Showthrough / Transparence
- Quality of print varies / Qualité inégale de l'impression
- Includes supplementary material / Comprend du matériel supplémentaire
- Pages wholly or partially obscured by errata slips, tissues, etc., have been refilmed to ensure the best possible image / Les pages totalement ou partiellement obscurcies par un feuillet d'errata, une pelure, etc., ont été filmées à nouveau de façon à obtenir la meilleure image possible.
- Opposing pages with varying colouration or discolourations are filmed twice to ensure the best possible image / Les pages s'opposant ayant des colorations variables ou des décolorations sont filmées deux fois afin d'obtenir la meilleure image possible.

This item is filmed at the reduction ratio checked below /
Ce document est filmé au taux de réduction indiqué ci-dessous.

10x		14x		18x		22x		26x		30x	
							✓				
12x		16x		20x		24x		28x		32x	

The copy filmed here has been reproduced thanks to the generosity of:

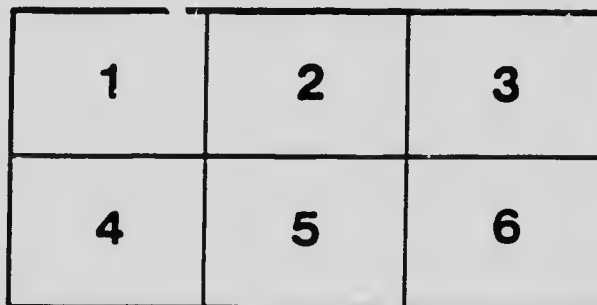
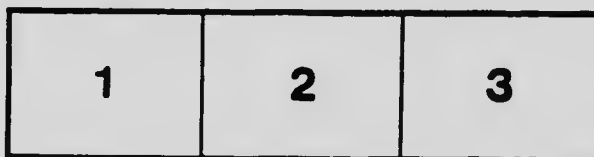
Stauffer Library
Queen's University

The images appearing here are the best quality possible considering the condition and legibility of the original copy and in keeping with the filming contract specifications.

Original copies in printed paper covers are filmed beginning with the front cover and ending on the last page with a printed or illustrated impression, or the back cover when appropriate. All other original copies are filmed beginning on the first page with a printed or illustrated impression, and ending on the last page with a printed or illustrated impression.

The last recorded frame on each microfiche shell contains the symbol \rightarrow (meaning "CONTINUED"), or the symbol ∇ (meaning "END"), whichever applies.

Maps, plates, charts, etc., may be filmed at different reduction ratios. Those too large to be entirely included in one exposure are filmed beginning in the upper left hand corner, left to right and top to bottom, as many frames as required. The following diagrams illustrate the method:



L'exemplaire filmé fut reproduit grâce à la générosité de:

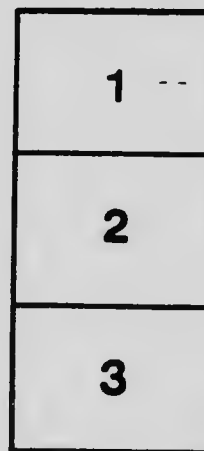
Stauffer Library
Queen's University

Les images suivantes ont été reproduites avec le plus grand soin, compte tenu de la condition et de la netteté de l'exemplaire filmé, et en conformité avec les conditions du contrat de filmage.

Les exemplaires originaux dont la couverture en papier est imprimée sont filmés en commençant par le premier plat et en terminant soit par la dernière page qui comporte une empreinte d'impression ou d'illustration, soit par le second plat, selon le cas. Tous les autres exemplaires originaux sont filmés en commençant par la première page qui comporte une empreinte d'impression ou d'illustration et en terminant par la dernière page qui comporte une telle empreinte.

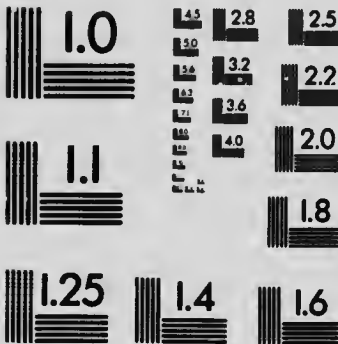
Un des symboles suivants apparaîtra sur la dernière image de chaque microfiche, selon le cas: le symbole \rightarrow signifie "A SUIVRE", le symbole ∇ signifie "FIN".

Les cartes, planches, tableaux, etc., peuvent être filmés à des taux de réduction différents. Lorsque le document est trop grand pour être reproduit en un seul cliché, il est filmé à partir de l'angle supérieur gauche, de gauche à droite, et de haut en bas, en prenant le nombre d'images nécessaire. Les diagrammes suivants illustrent la méthode.



MICROCOPY RESOLUTION TEST CHART

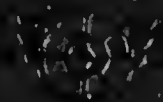
(ANSI and ISO TEST CHART No. 2)



APPLIED IMAGE Inc

1653 East Main Street
Rochester, New York 14609 USA
(716) 482 - 0300 - Phone
(716) 288 - 5989 - Fax

SHERBROOKE
RAILWAY & POWER
COMPANY



1885

F3007

750

Sherbrooke Railway & Power Company

(INCORPORATED UNDER THE LAWS OF THE PROVINCE OF QUEBEC)

5% Consolidated First Mortgage Sinking Fund Bonds

Dated July 1, 1910

Due July 1, 1940

Interest payable at par at any branch of the Eastern Townships Bank and at the Bank of Scotland, London, Eng.

Interest Payable January 1st and July 1st

Redeemable as a whole at 105 and interest on any interest date after 1st July, 1910, or annually by Sinking Fund drawings.

Denominations \$500 or £102, 14s, 9½d.

Bonds may be registered.

TRUSTEE.....The Montreal Trust Company
BANKERS.....The Eastern Townships Bank

CAPITALIZATION

Authorized		Issued
\$1,500,000	5% 30 Year Bonds	\$700,000
1,500,000	Ordinary Shares	700,000

The balance of \$800,000 Consolidated First Mortgage Bonds and Ordinary Shares will remain in the Treasury, and will be available for future requirements.

F5012
1910
S551

DIRECTORS

- CLARENCE J. McCUAIG, MONTREAL, *President*... Vice-President Black Lake Consolidated Asbestos Co.
Director Ottawa Light, Heat & Power Co.
Director Sawyer-Massey Company, Limited
- WM. FARWELL, SHERBROOKE..... President of the Eastern Townships Bank.
- S. H. EWING, MONTREAL..... President Montreal Cotton Company,
Vice-President Molsons Bank,
Vice-President West India Electric Company.
- R. T. HOPPER, MONTREAL..... Director Amalgamated Asbestos Corporation,
President Dominion Marble Company.
- W. H. BROUSE, TORONTO..... Vice-President Cobalt Hydraulic Power Company,
Director Canadian Niagara Power Company.
- FRANK THOMPSON, MONTREAL, *Secretary-Treasurer*, Frank Thompson & Company.



THE CITY OF SHERBROOKE



The City of Sherbrooke, the commercial centre of the Eastern Townships, is in point of size and population the third largest city in the Province of Quebec. It is a manufacturing city and is well situated in the centre of a fine agricultural district. It is the distributing point for the Eastern Townships.

The surrounding district is rich in timber and minerals, including the largest Asbestos deposits in the world, and, being located between Montreal and the New England States, is exceptionally well situated for Canadian manufacturers and for the branch establishments of American concerns.

The industries of Sherbrooke are many and varied. Among the most important may be mentioned: The Paton Manufacturing Co., woollens, tweeds and knitting; the Magog Woollen Mills, manufacturers of tweeds, worsted, yarns, blankets, Pullman rugs; the Canadian Rand Company, drilling machinery, etc.; the Jenckes Machine Company, and the Imperial Pneumatic Tool Company, makers of all kinds of mining machinery, engines, boilers, water wheels, hoists, etc.; the Sherbrooke Iron Works, makers of saw mill supplies; the Moore Carpet Company; J. D. Bush and McCrea, sashes, doors, etc.; the George Long Manufacturing Company, cabinet makers; Alex Ames and Sons, with the largest cold storage plant in the Eastern Townships; Hovey Bros. Packing Company, pork packers; Walter Blue and Company, wholesale clothing manufacturers; W. R. Webster and Co., cigars; the Sherbrooke Cigar Company; Thompson and Company, manufacturers of bobbins; P. Biron, carriages of all descriptions; the Ever Rest Spring Bed Company; the Peerless Jewellery Company; the Canadian Fairbanks Company, Manufacturers of scales and valves; the shops of the Quebec Central Railway; Mackinnon Holmes Company, structural steel for bridge work; the Union Paper Manufacturing Company and the Crystal Spring Brewery.

It is understood that the Canadian Fairbanks Company and Moore Carpet Company (now controlled by the Guelph Carpet Company) will about double their capacity next spring.

3027500

These industries being many and varied give employment to all branches of skilled labor.

In addition to the manufacturing concerns already established there several important industries are considering locating in Sherbrooke, the conditions pertaining to labor, transportation and cheap power being exceptionally favorable to the operation of industrial plants.

Sherbrooke has exceptional railway facilities. It is on the main line of the Grand Trunk Railway, is a divisional point of the Canadian Pacific Railway, the Canadian terminus of the Boston & Maine system and the headquarters of the Quebec Central Railway Company. The head offices of the Eastern Townships Bank are located in Sherbrooke. Its distance from Montreal (100 miles) is such as to insure the development of the city as the centre of the district in which it is situated. Sherbrooke is the headquarters of the Eastern Townships Agricultural Society, whose annual exhibition is one of the most important of the kind held in Canada.

INCORPORATION OF THE COMPANY

The Sherbrooke Railway & Power Company was incorporated by Act of the Legislature of the Province of Quebec in 1910, succeeding the Sherbrooke Street Railway Company, whose Charter was granted in 1895. Under its Charter and Amendments the Company has the right to operate an electric street railway and sell hydro-electric power in the city of Sherbrooke and throughout the district of St. Francis. This district takes in the counties of Sherbrooke, Stanstead, Wolfe, Compton, Richmond and Megantic, and comprises a total population of about 150,000.

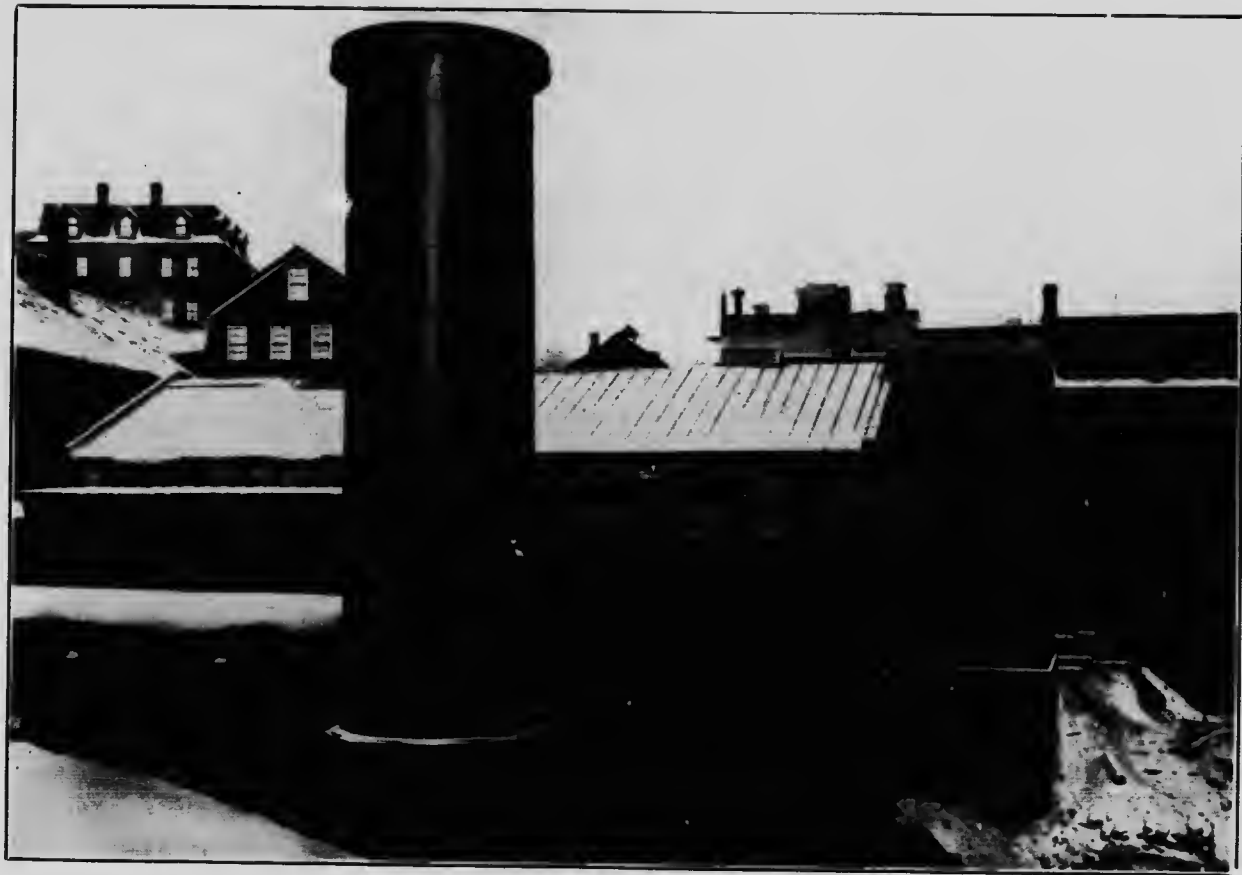
FRANCHISES

The Company's franchise from the city of Sherbrooke is for a term of 40 years, and gives it the exclusive right to build and operate a street railway within the limits of the city during this period, with exemption from all taxation for first 20 years. At the end of 20 years the municipality has the right to purchase the property of the company as a going concern. Under the terms of its franchise, the company has the right to sell power for industrial purposes in the city of Sherbrooke.



THE NEW DAM OF THE SHERBROOKE RAILWAY AND POWER COMPANY, BUILT ENTIRELY OF CONCRETE, 300 FEET LONG





THE SHERBROOKE RAILWAY & POWER COMPANY'S POWER HOUSE





THE PENSTOCK OF THE COMPANY, 9 FT. 6 IN. IN DIAMETER AND 650 FT. LONG, CARRIED ON
CONCRETE COLUMNS 16 FT. APART





THE NEW TYPE OF CAR ADOPTED BY THE COMPANY





THE INTERIOR OF ONE OF THE COMPANY'S NEW CARS





THE MAGOG RIVER—A GREAT SOURCE OF POWER. THE COMPANY'S WATER POWER BEFORE DEVELOPMENT





THE OLD DAM OF THE SHERBROOKE STREET CANALWAY





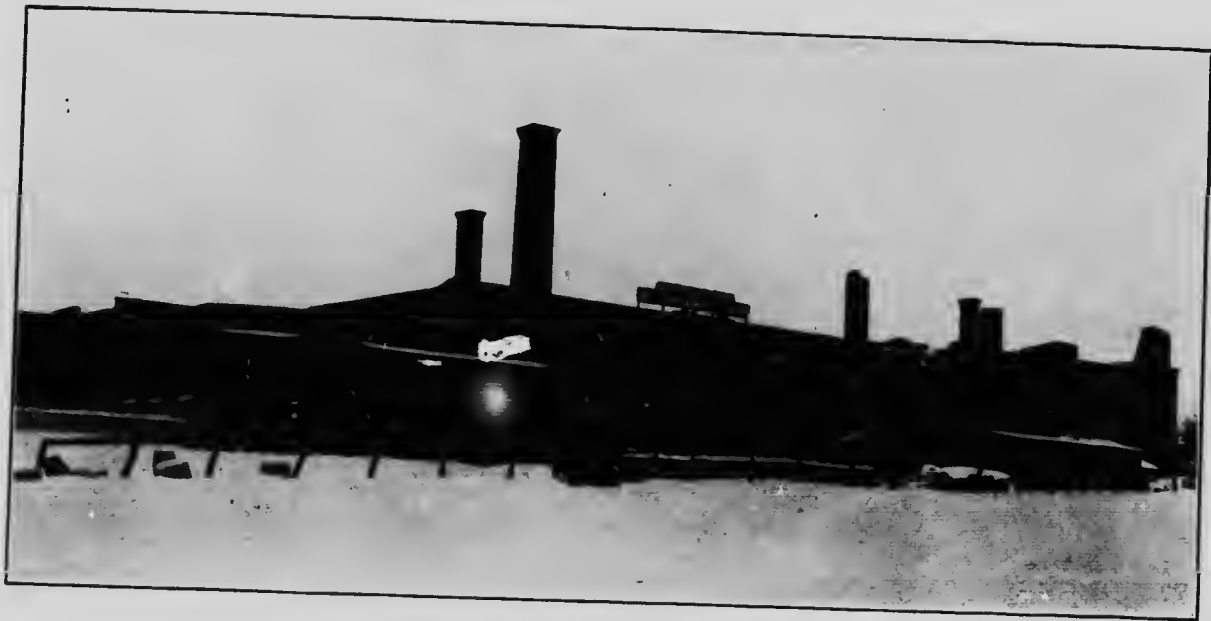
DUFFERIN AVENUE, HEAD OFFICE OF EASTERN TOWNSHIP'S BANK AND THE POST OFFICE





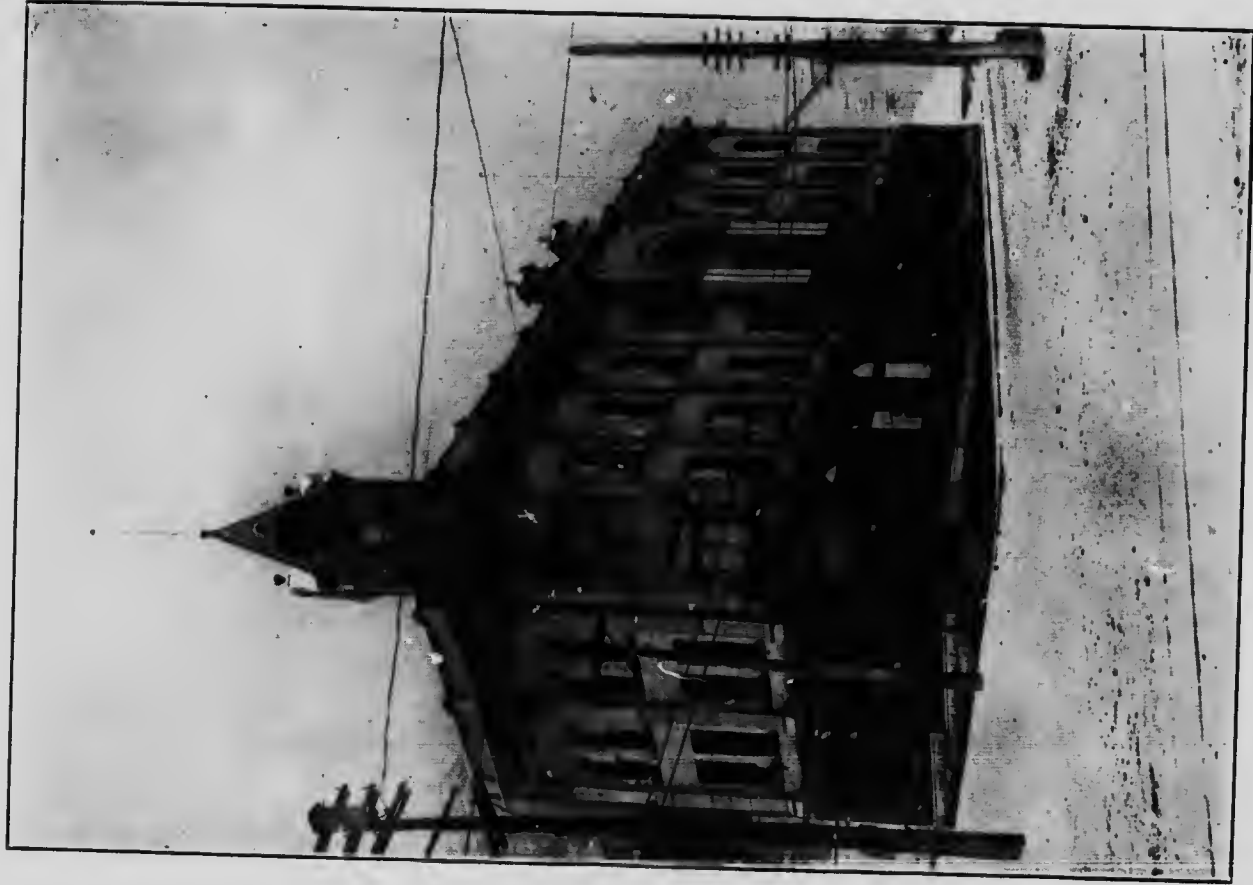
THE NEW ARMOURY WHICH COST OVER \$100,000





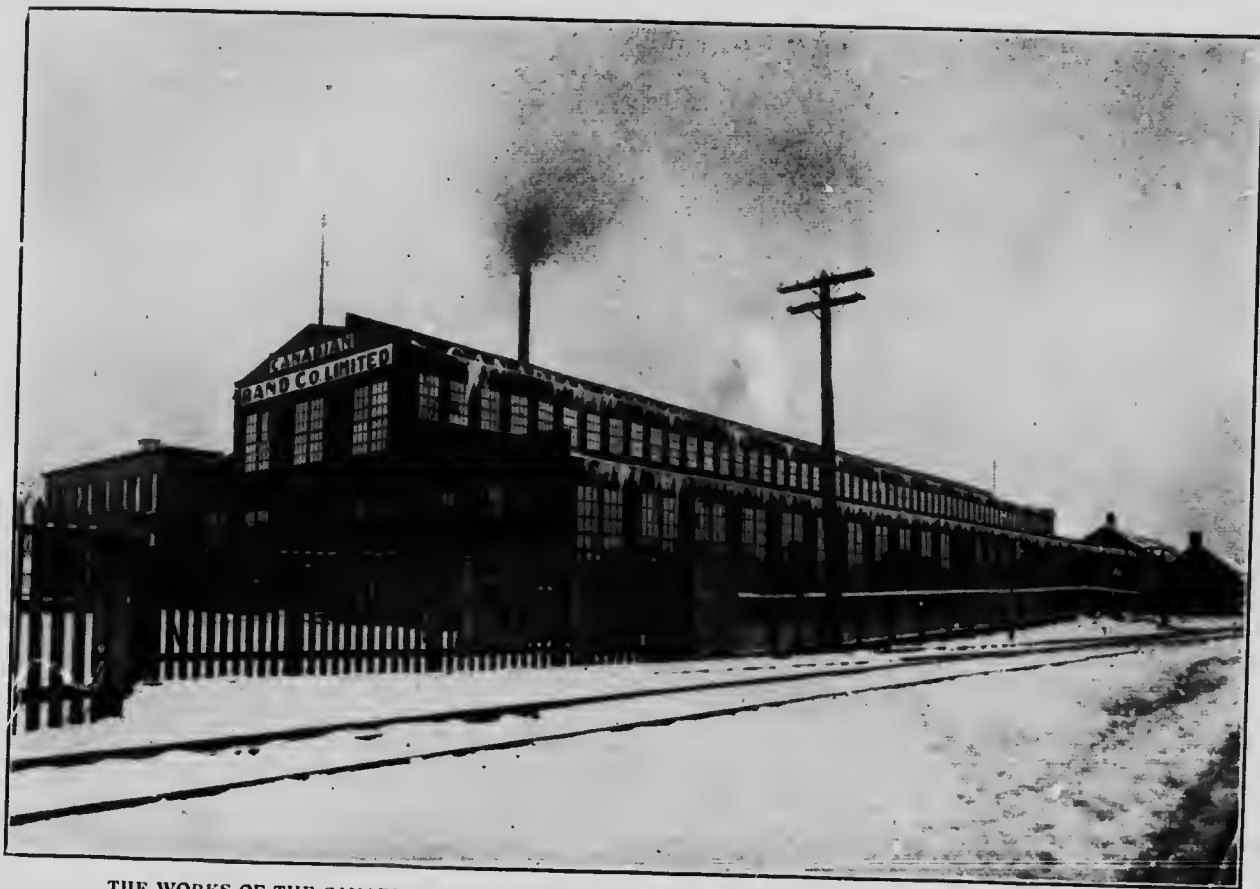
THE CANADIAN FAIRBANKS COMPANY LIMITED
MANUFACTURERS OF SCALES AND VALVES



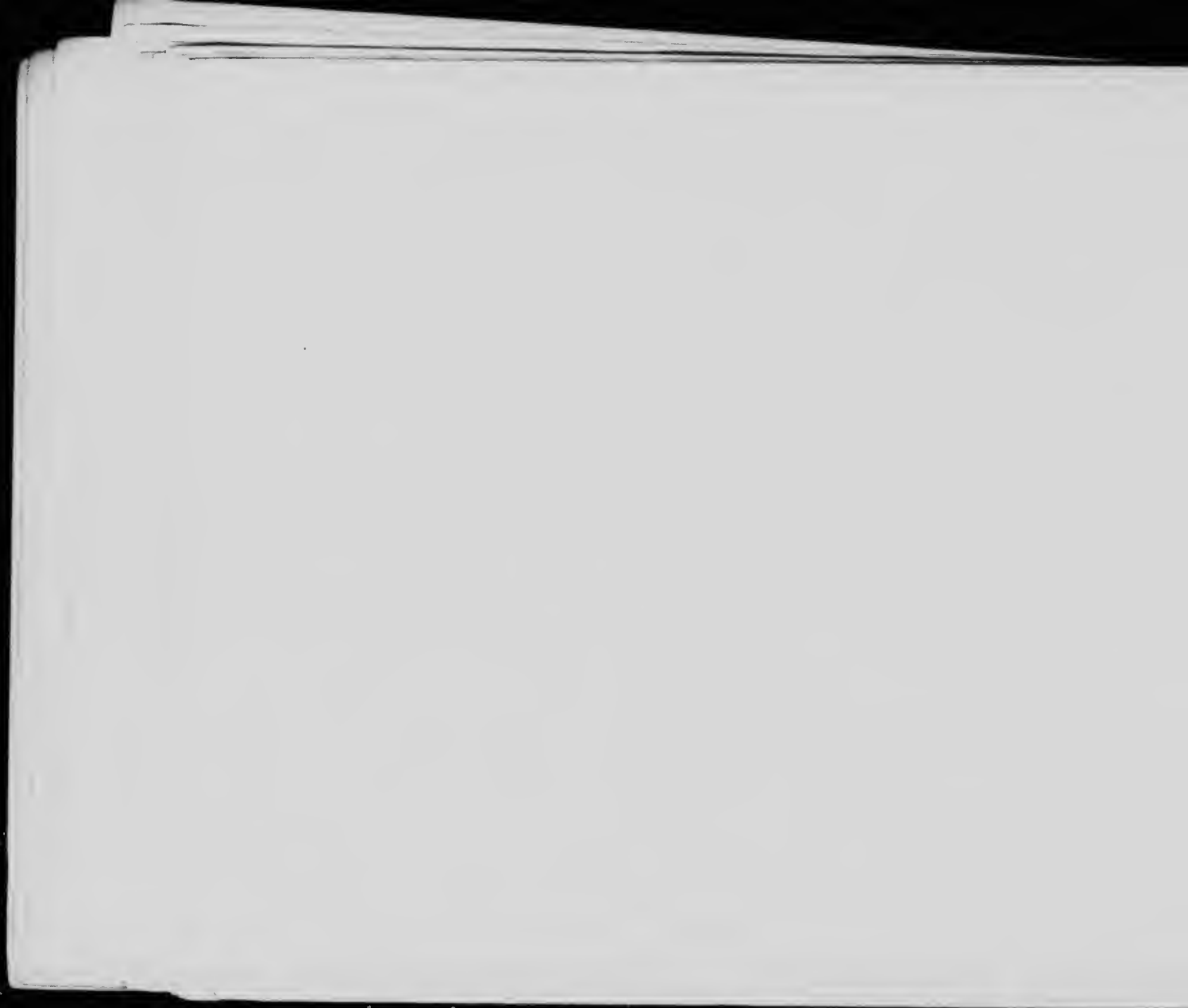


BRANCH OF THE SUN LIFE ASSURANCE COMPANY OF CANADA





THE WORKS OF THE CANADIAN RAND COMPANY, LIMITED, MANUFACTURERS OF MINING MACHINERY





WALTER BLUE & COMPANY, LIMITED, THE LARGEST CLOTHING MANUFACTURERS IN THE EASTERN TOWNSHIPS



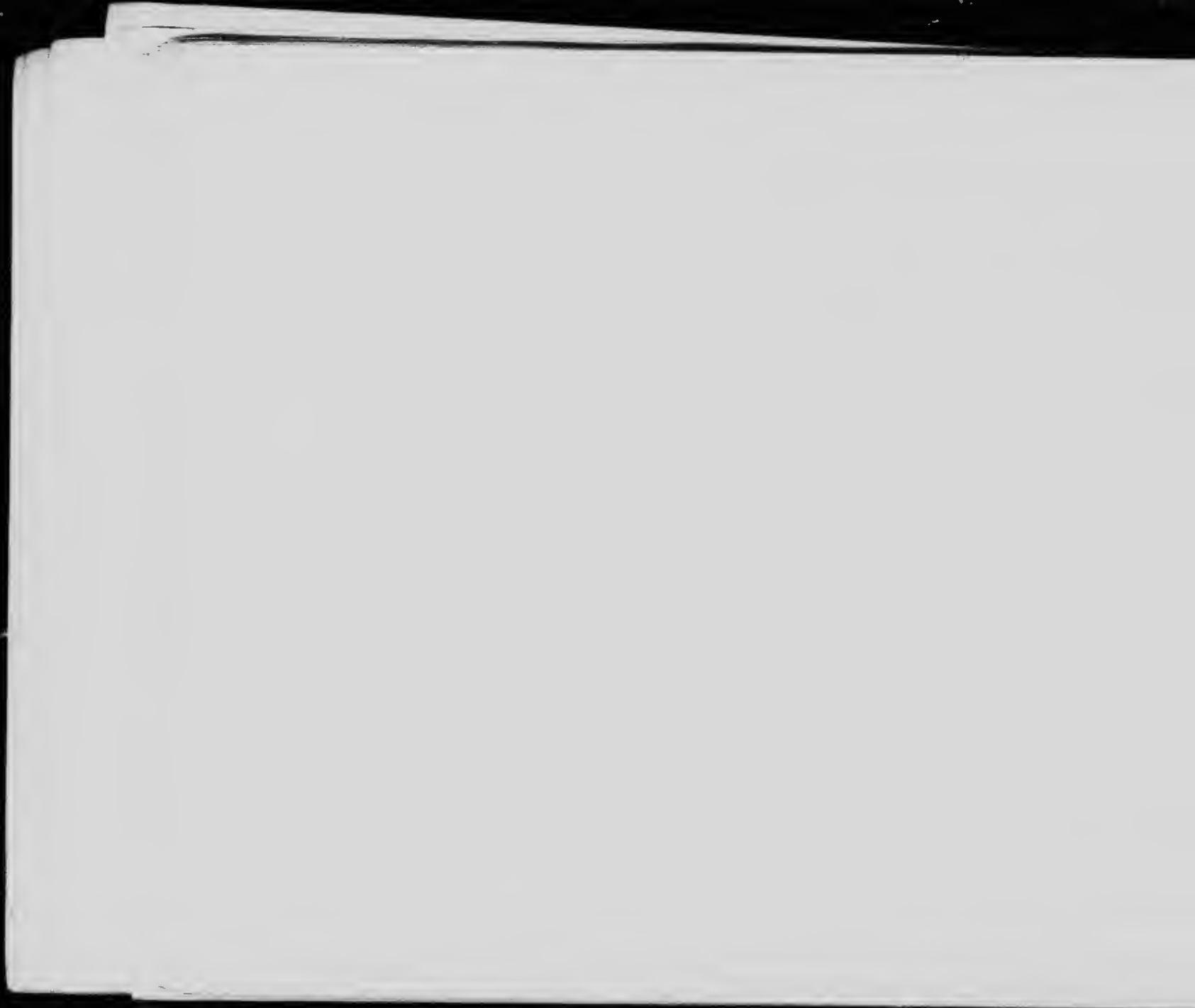


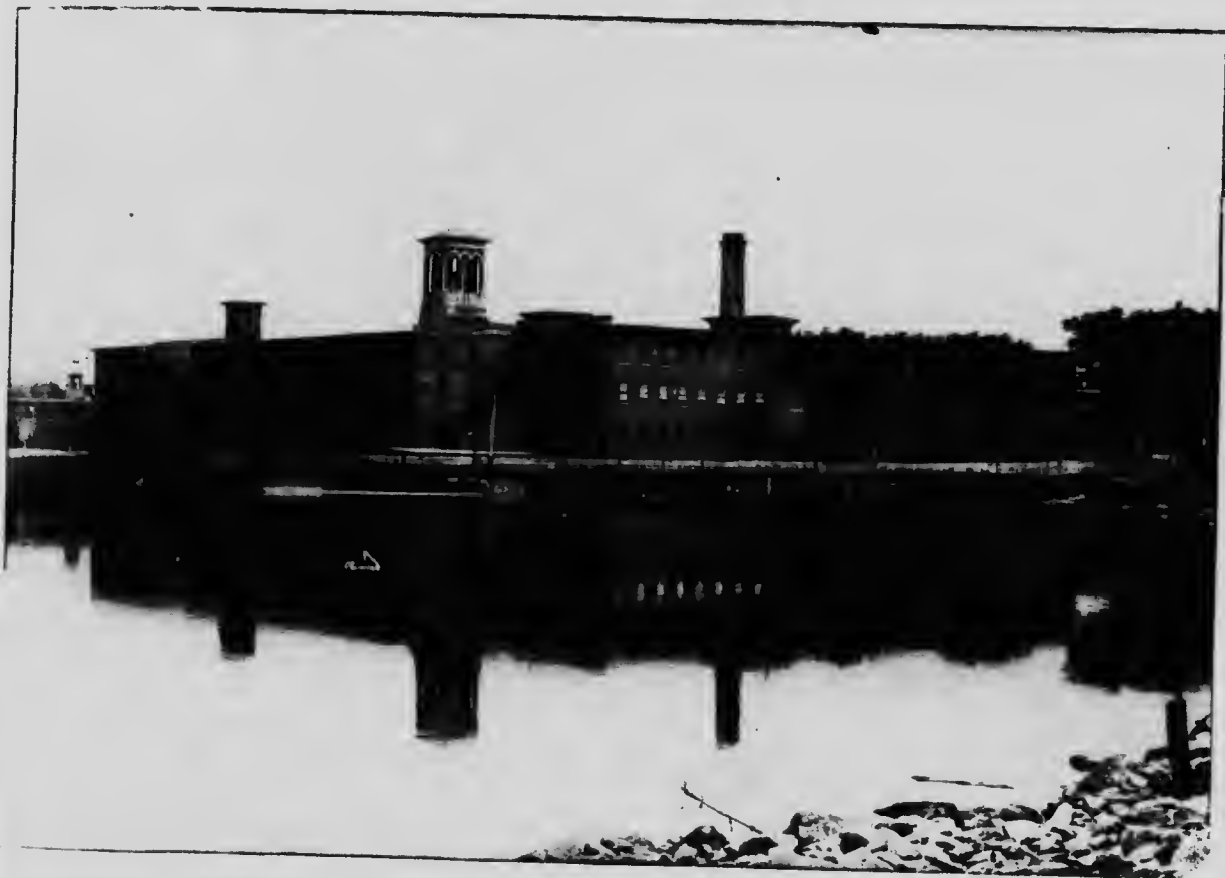
THE JENCKES MACHINE COMPANY, LIMITED, MANUFACTURERS OF MINING MACHINERY



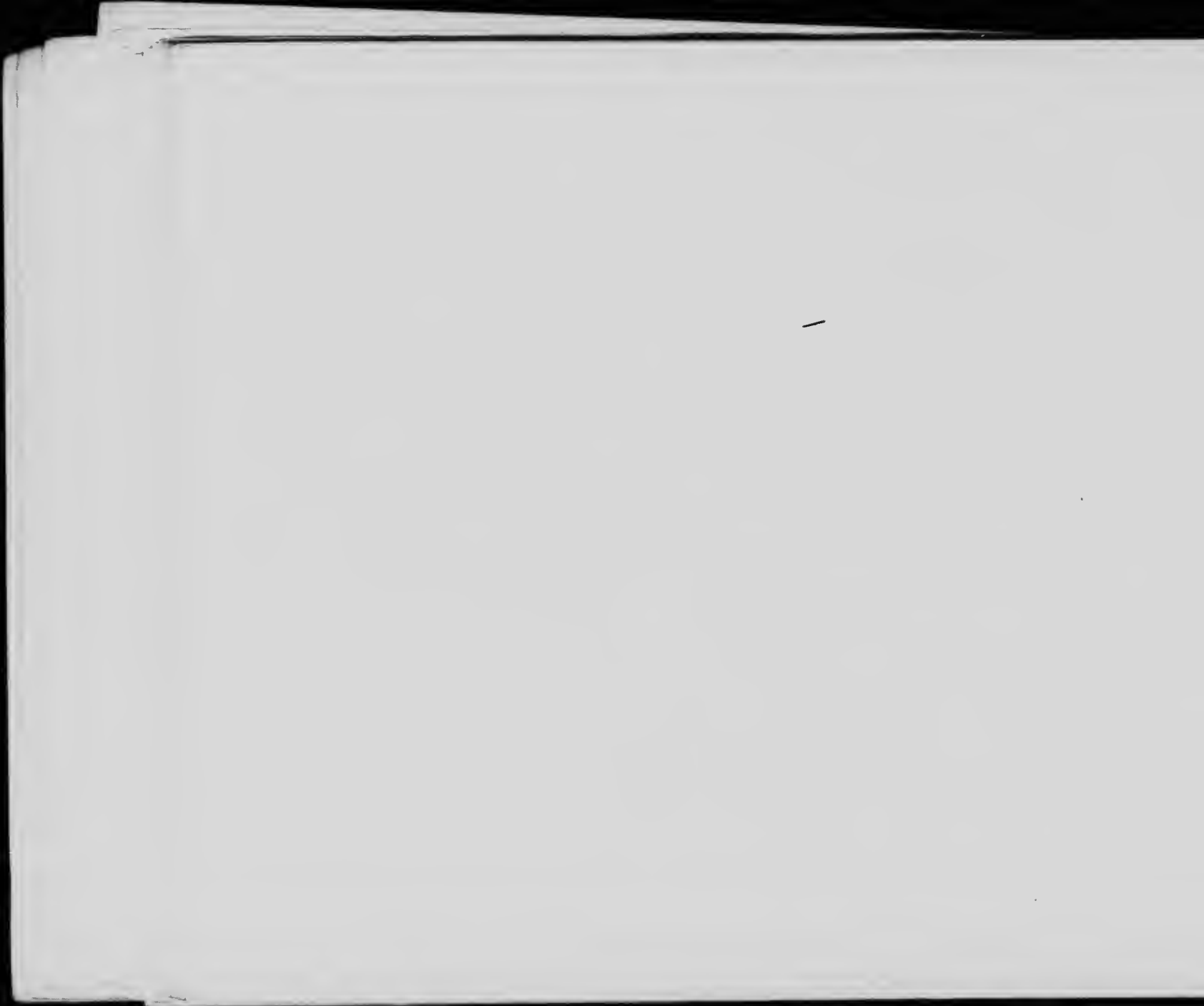


COURT HOUSE AND STRATHCONA SQUARE





WORKS OF PATON MANUFACTURING COMPANY, THE LARGEST WOOLLEN MANUFACTURING COMPANY IN CANADA



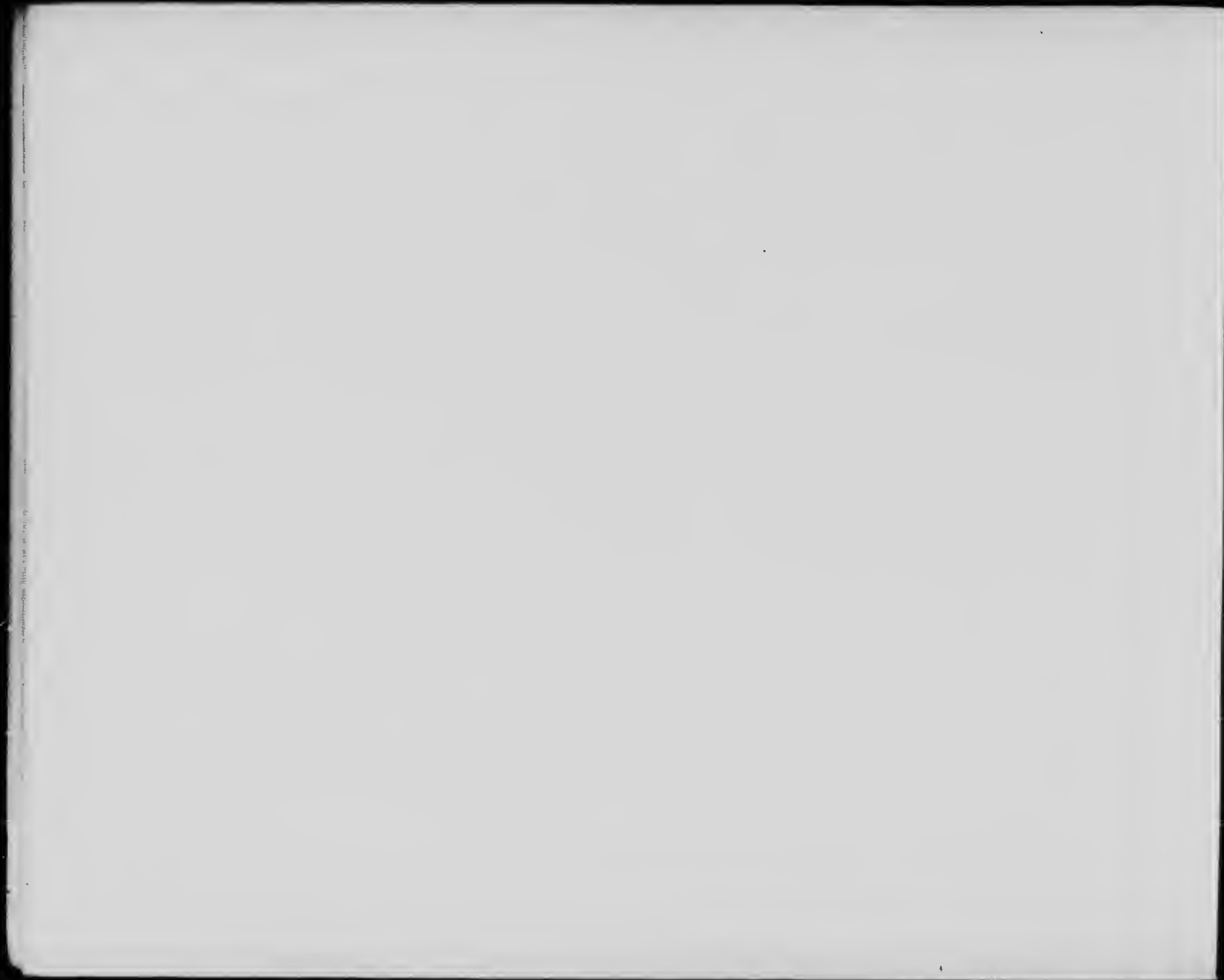


THE MAGOG HOUSE, ONE OF SHERBROOKE'S HOTELS





ST. PETER'S CHURCH, ON THE LINE OF THE SHERBROOKE STREET RAILWAY





W. R. WEBSTER & COMPANY, CIGAR MANUFACTURERS





THE NEW ROYAL HOTEL





HEAD OFFICE OF THE STANSTEAD AND SHERBROOKE MUTUAL FIRE INSURANCE COMPANY



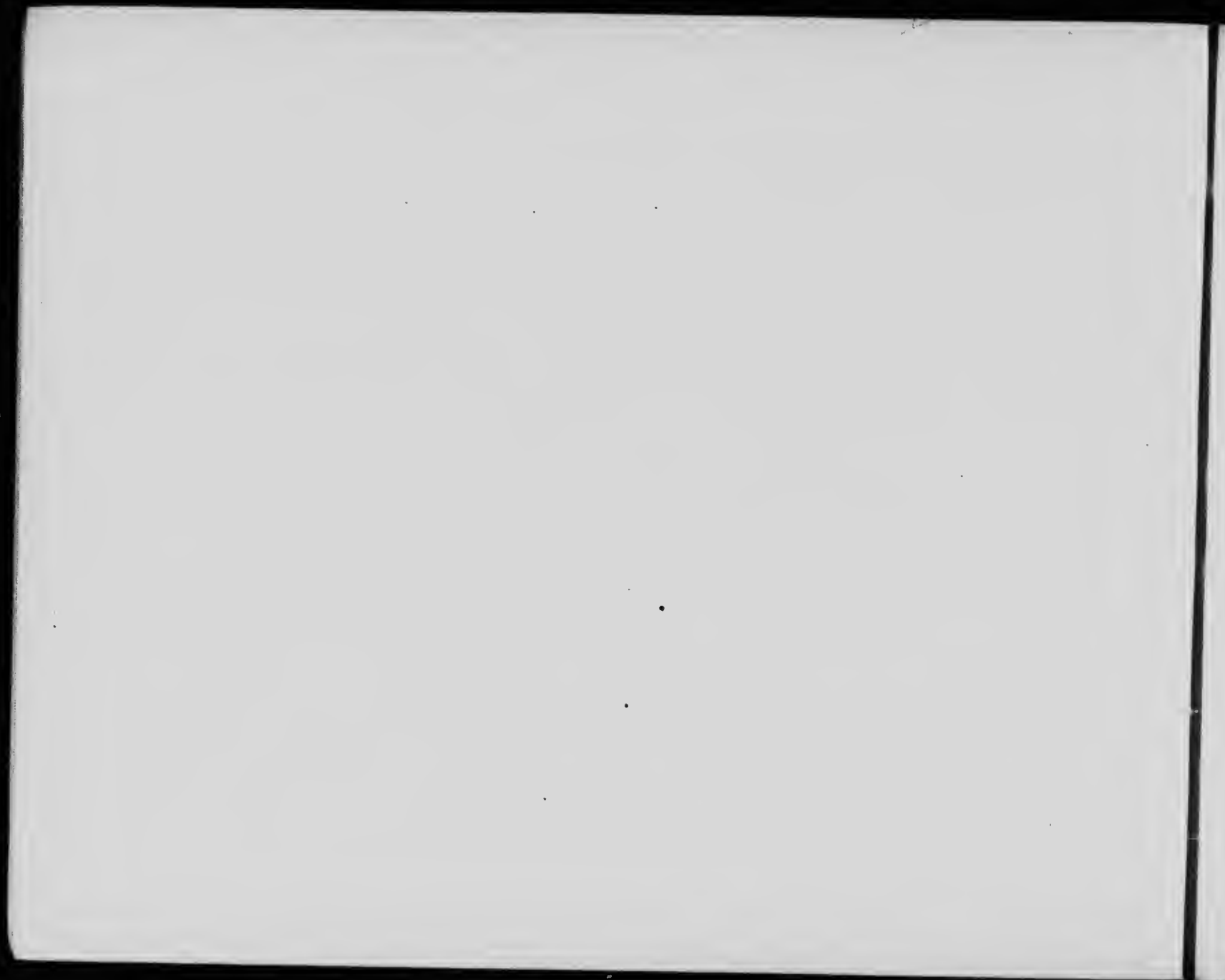


BISHOP'S UNIVERSITY, LENNONVILLE



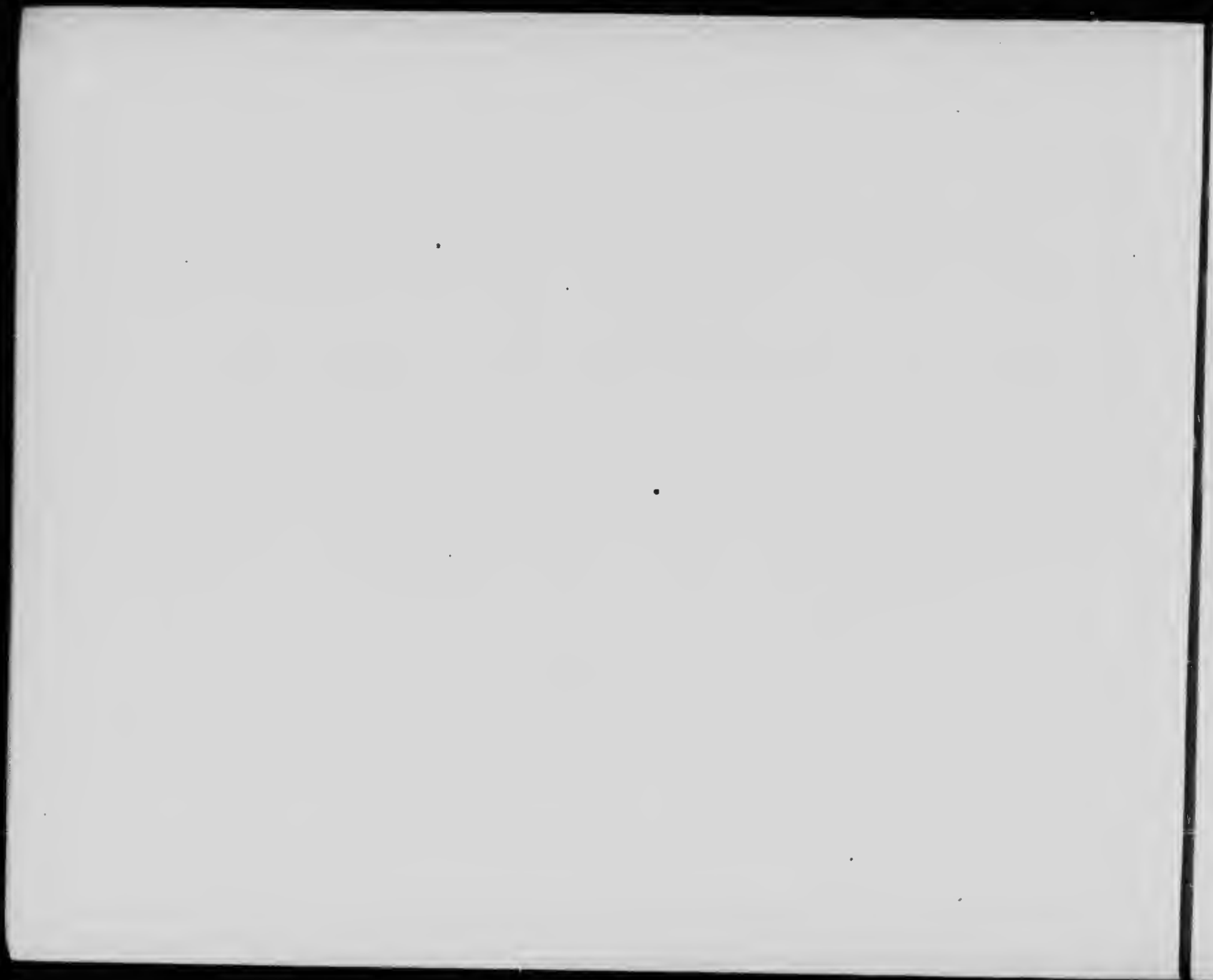


THE NEW SHERBROOKE HOUSE



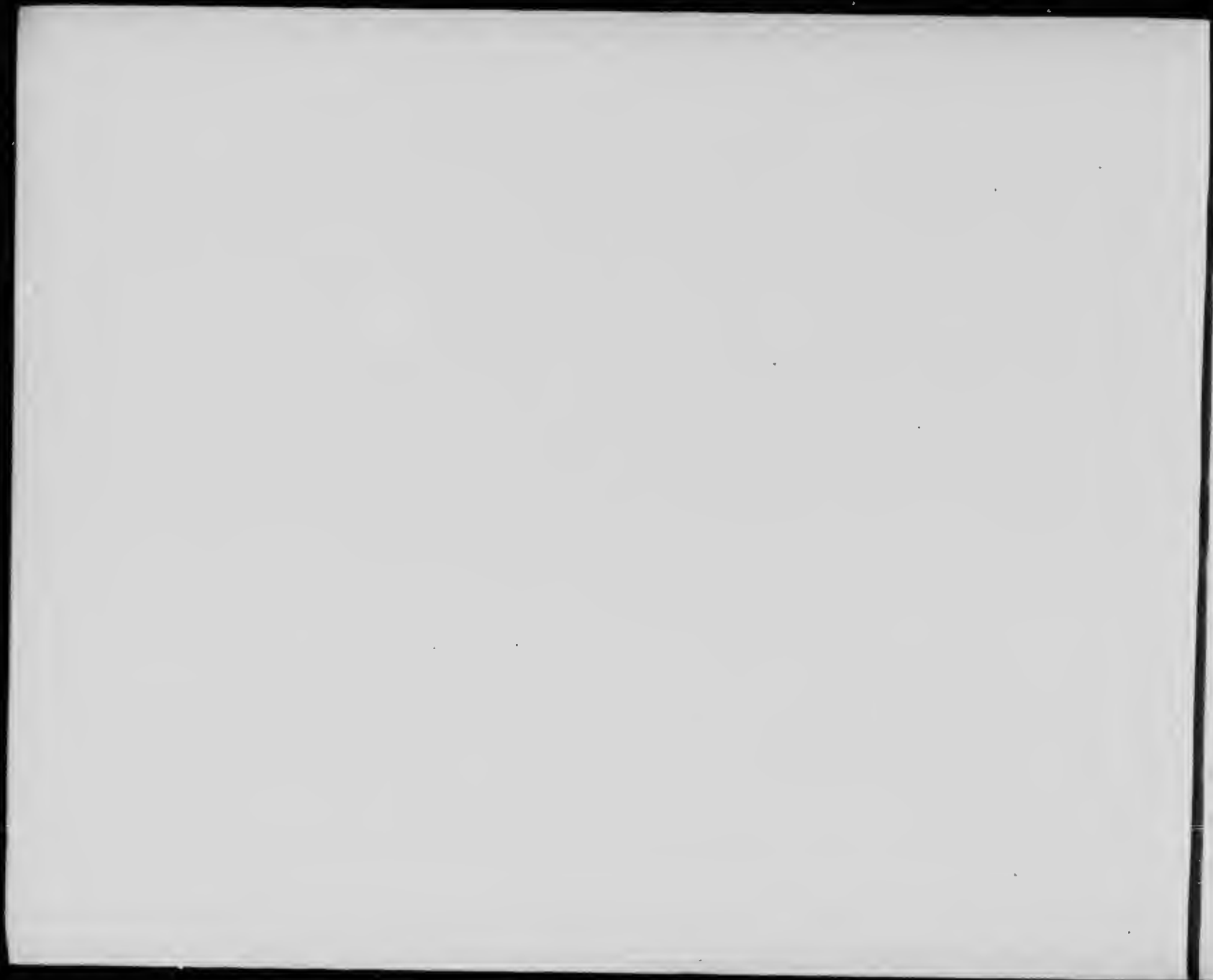


ST. CHARLES COLLEGE



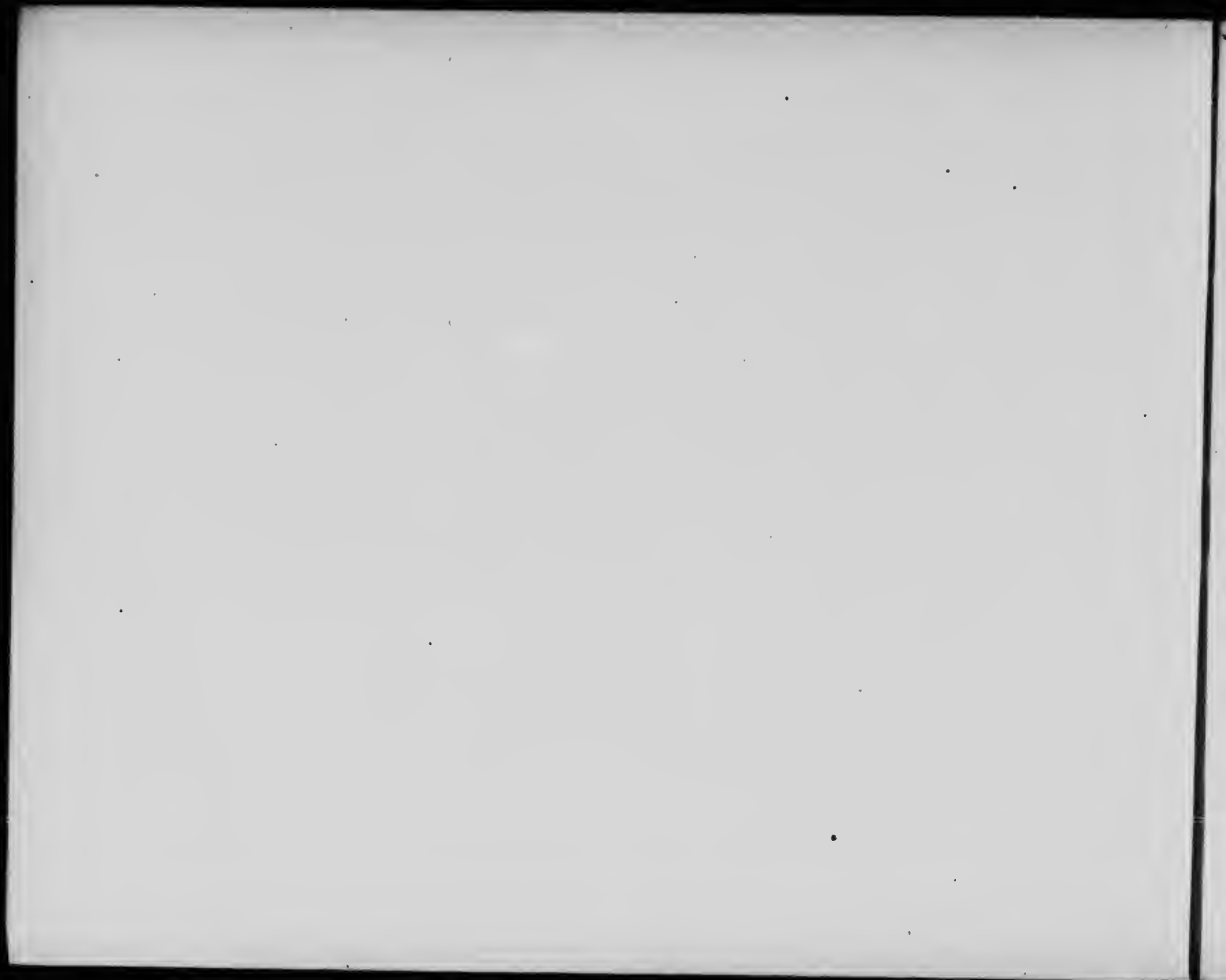


THE NEW CANADIAN PACIFIC RAILWAY STATION



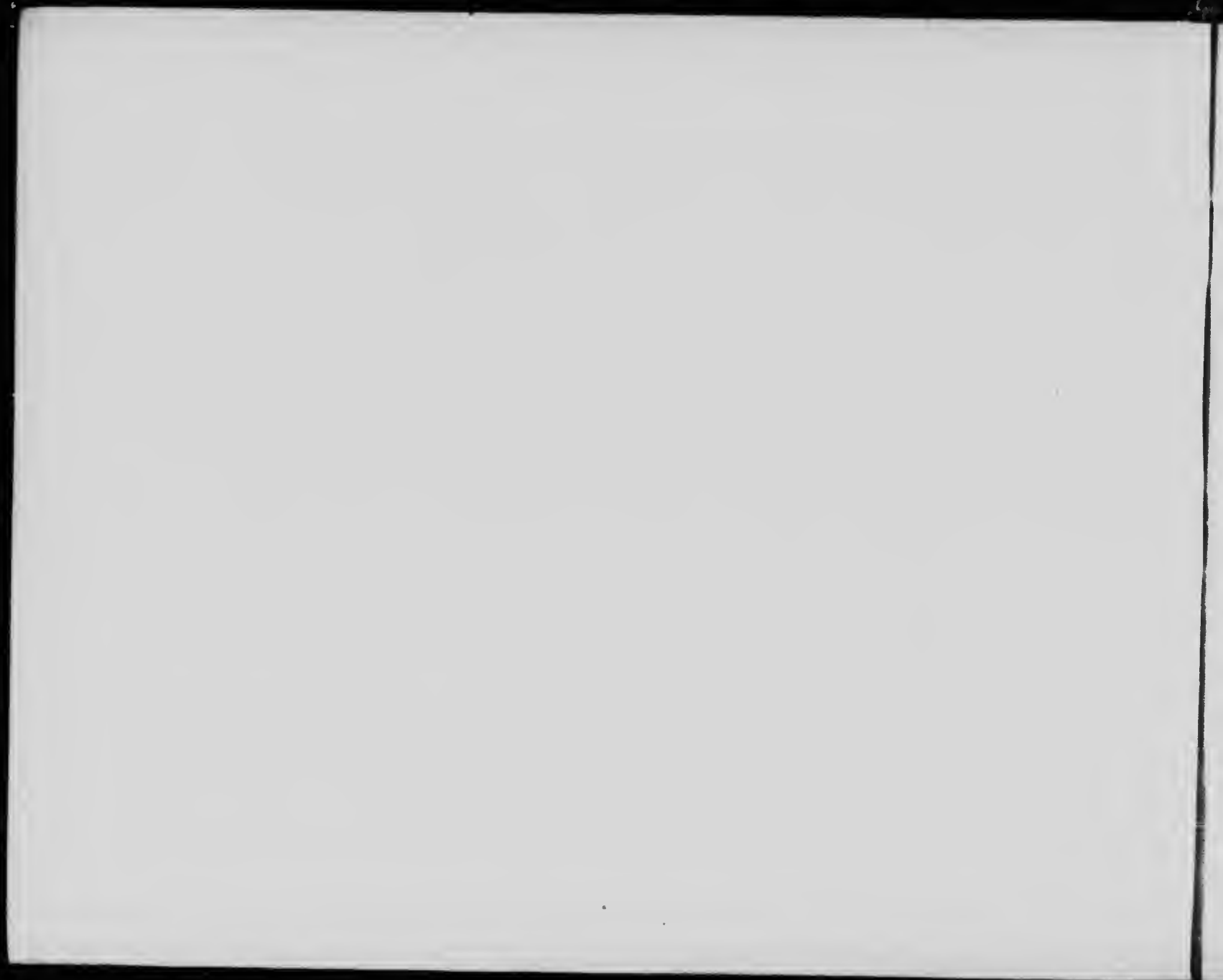


THE GEORGE LONG MANUFACTURING COMPANY, CABINET MAKERS





GRAND TRUNK, BOSTON AND MAINE AND QUEBEC CENTRAL RAILWAY STATION





THE CHATEAU FRONTENAC HOTEL

THE ST. LAWRENCE
PRESS, LIMITED
PRINTERS, MONTREAL



