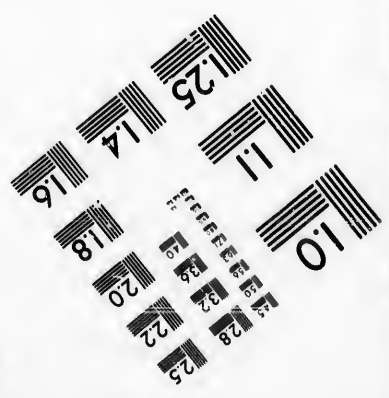
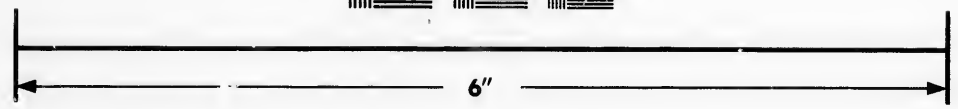
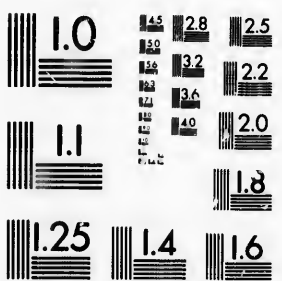


**IMAGE EVALUATION  
TEST TARGET (MT-3)**



**Photographic  
Sciences  
Corporation**

23 WEST MAIN STREET  
WEBSTER, N.Y. 14580  
(716) 872-4503

1.5  
1.6  
1.8  
2.0  
2.2  
2.5  
2.8  
3.2  
3.6  
4.0

**CIHM/ICMH  
Microfiche  
Series.**

**CIHM/ICMH  
Collection de  
microfiches.**



Canadian Institute for Historical Microreproductions / Institut canadien de microreproductions historiques

1.0  
1.2  
1.4  
1.6  
1.8  
2.0  
2.2  
2.5  
2.8  
3.2  
3.6  
4.0

**© 1987**

Technical and Bibliographic Notes/Notes techniques et bibliographiques

The Institute has attempted to obtain the best original copy available for filming. Features of this copy which may be bibliographically unique, which may alter any of the images in the reproduction, or which may significantly change the usual method of filming, are checked below.

L'Institut a microfilmé le meilleur exemplaire qu'il lui a été possible de se procurer. Les détails de cet exemplaire qui sont peut-être uniques du point de vue bibliographique, qui peuvent modifier une image reproduite, ou qui peuvent exiger une modification dans la méthode normale de filmage sont indiqués ci-dessous.

- Coloured covers/  
Couverture de couleur
- Covers damaged/  
Couverture endommagée
- Covers restored and/or laminated/  
Couverture restaurée et/ou pelliculée
- Cover title missing/  
Le titre de couverture manque
- Coloured maps/  
Cartes géographiques en couleur
- Coloured ink (i.e. other than blue or black)/  
Encre de couleur (i.e. autre que bleue ou noire)
- Coloured plates and/or illustrations/  
Planches et/ou illustrations en couleur
- Bound with other material/  
Relié avec d'autres documents
- Tight binding may cause shadows or distortion along interior margin/  
La reliure serrée peut causer de l'ombre ou de la distorsion le long de la marge intérieure
- Blank leaves added during restoration may appear within the text. Whenever possible, these have been omitted from filming/  
Il se peut que certaines pages blanches ajoutées lors d'une restauration apparaissent dans le texte, mais, lorsque cela était possible, ces pages n'ont pas été filmées.
- Additional comments:  
Commentaires supplémentaires:

- Coloured pages/  
Pages de couleur
- Pages damaged/  
Pages endommagées
- Pages restored and/or laminated/  
Pages restaurées et/ou pelliculées
- Pages discoloured, stained or foxed/  
Pages décolorées, tachetées ou piquées
- Pages detached/  
Pages détachées
- Showthrough/  
Transparence
- Quality of print varies/  
Qualité inégale de l'impression
- Includes supplementary material/  
Comprend du matériel supplémentaire
- Only edition available/  
Seule édition disponible
- Pages wholly or partially obscured by errata slips, tissues, etc., have been refilmed to ensure the best possible image/  
Les pages totalement ou partiellement obscurcies par un feuillet d'errata, une pelure, etc., ont été filmées à nouveau de façon à obtenir la meilleure image possible.

This item is filmed at the reduction ratio checked below/  
Ce document est filmé au taux de réduction indiqué ci-dessous.

10X	12X	14X	16X	18X	20X	22X	24X	26X	28X	30X	32X
<input type="checkbox"/>	<input type="checkbox"/>	<input type="checkbox"/>	<input type="checkbox"/>	<input type="checkbox"/>	<input type="checkbox"/>	<input checked="" type="checkbox"/>	<input type="checkbox"/>	<input type="checkbox"/>	<input type="checkbox"/>	<input type="checkbox"/>	<input type="checkbox"/>

The copy filmed here has been reproduced thanks to the generosity of:

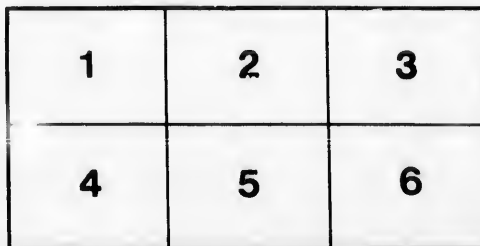
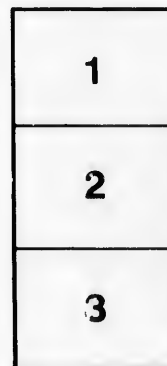
Metropolitan Toronto Library  
Canadian History Department

The images appearing here are the best quality possible considering the condition and legibility of the original copy and in keeping with the filming contract specifications.

Original copies in printed paper covers are filmed beginning with the front cover and ending on the last page with a printed or illustrated Impression, or the back cover when appropriate. All other original copies are filmed beginning on the first page with a printed or illustrated impression, and ending on the last page with a printed or illustrated Impression.

The last recorded frame on each microfiche shall contain the symbol  $\rightarrow$  (meaning "CONTINUED"), or the symbol  $\nabla$  (meaning "END"), whichever applies.

Maps, plates, charts, etc., may be filmed at different reduction ratios. Those too large to be entirely included in one exposure are filmed beginning in the upper left hand corner, left to right and top to bottom, as many frames as required. The following diagrams illustrate the method:



L'exemplaire filmé fut reproduit grâce à la générosité de:

Metropolitan Toronto Library  
Canadian History Department

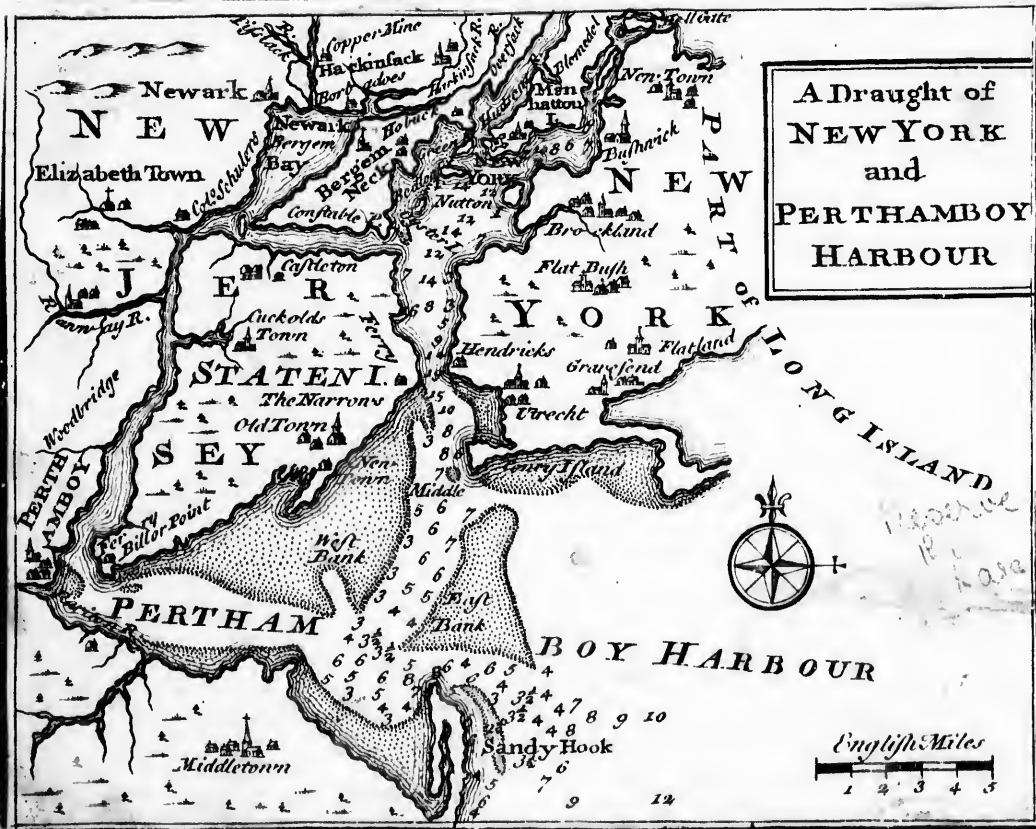
Les images suivantes ont été reproduites avec le plus grand soin, compte tenu de la condition et de la netteté de l'exemplaire filmé, et en conformité avec les conditions du contrat de filmage.

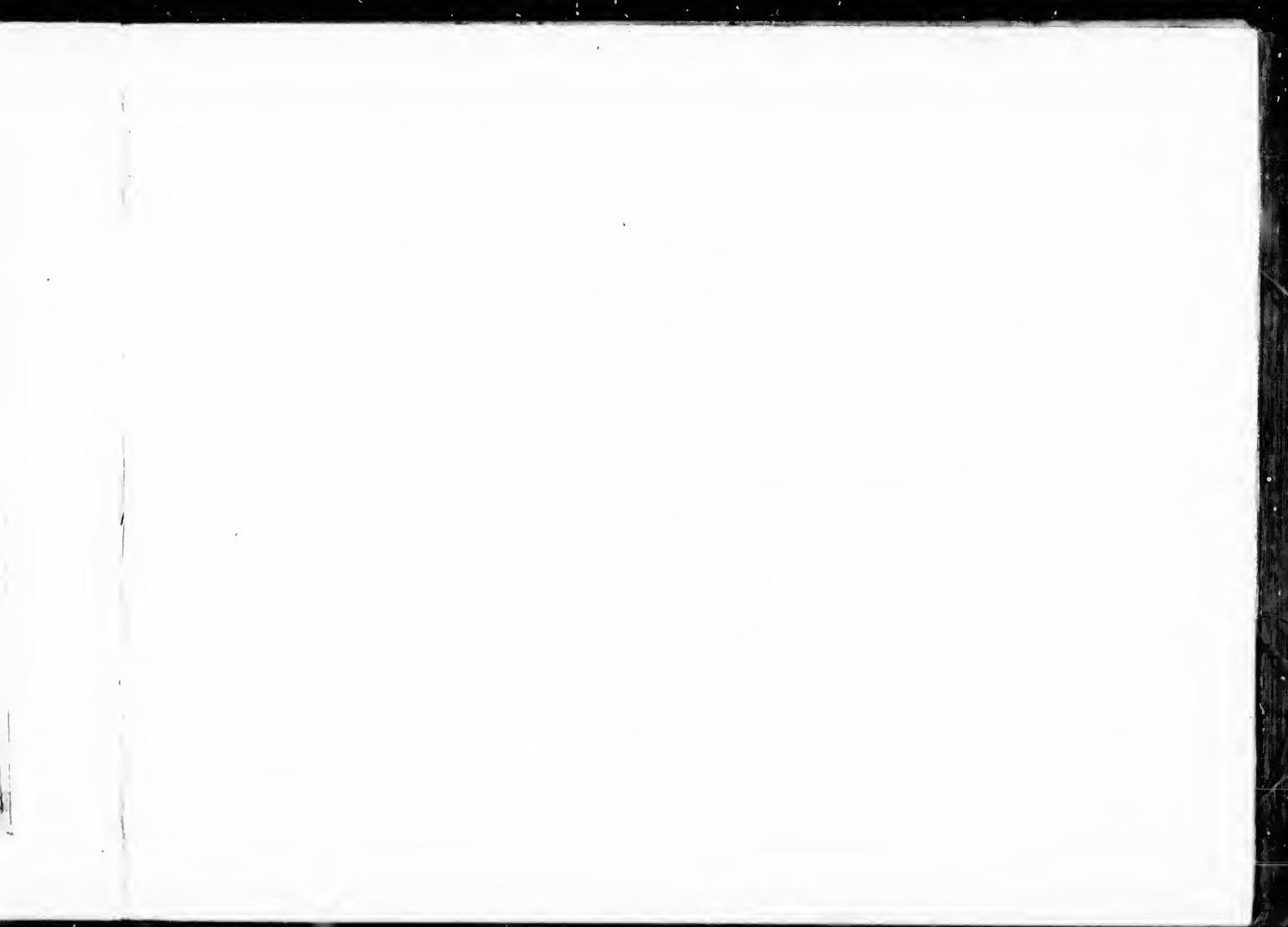
Les exemplaires originaux dont la couverture en papier est imprimée sont filmés en commençant par le premier plat et en terminant soit par la dernière page qui comporte une empreinte d'impression ou d'illustration, soit par le second plat, selon le cas. Tous les autres exemplaires originaux sont filmés en commençant par la première page qui comporte une empreinte d'impression ou d'illustration et en terminant par la dernière page qui comporte une telle empreinte.

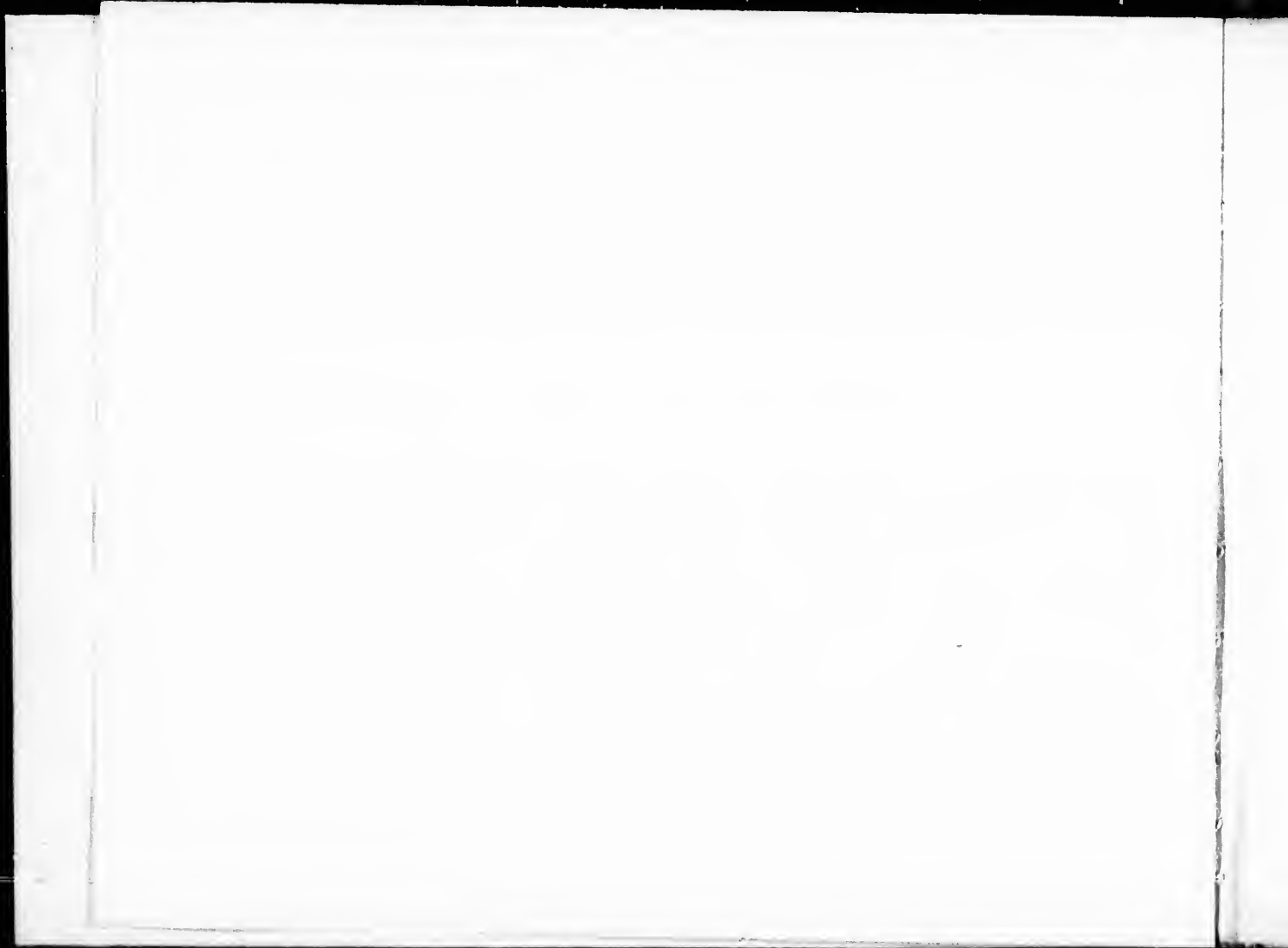
Un des symboles suivants apparaîtra sur la dernière image de chaque microfiche, selon le cas: le symbole  $\rightarrow$  signifie "A SUIVRE", le symbole  $\nabla$  signifie "FIN".

Les cartes, planches, tableaux, etc., peuvent être filmés à des taux de réduction différents. Lorsque le document est trop grand pour être reproduit en un seul cliché, il est filmé à partir de l'angle supérieur gauche, de gauche à droite, et de haut en bas, en prenant le nombre d'images nécessaire. Les diagrammes suivants illustrent la méthode.

A Draught of  
 NEW YORK  
 and  
 PERTHAMBOY  
 HARBOUR







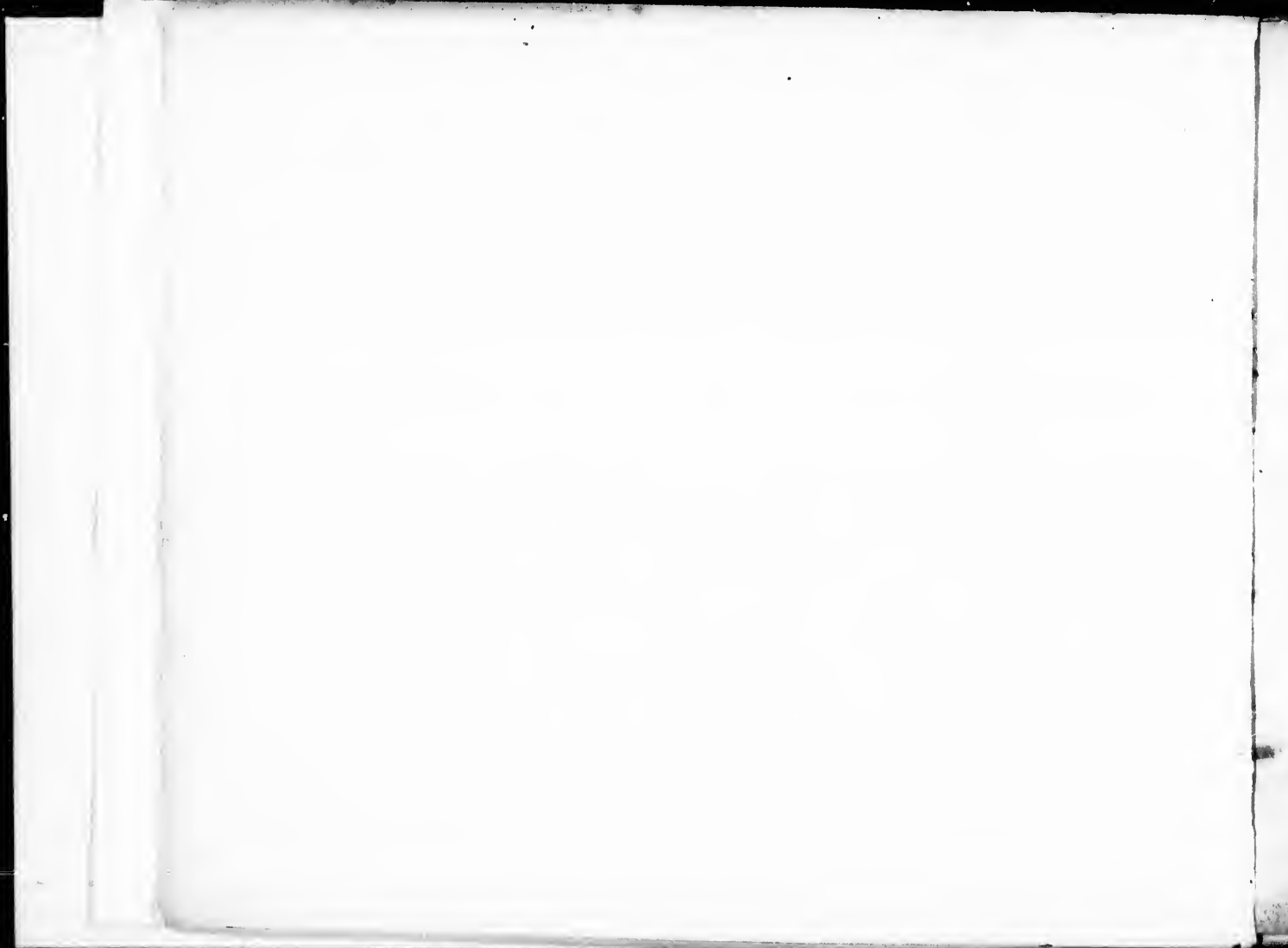
A set of  
Plans and Forts  
in  
America,

Reduced from actual surveys.  
1765.

London:

Published according to Act of Parliament,  
by Mary Ann Roeque. Topographer to His Royal  
Highness the Duke of Gloucester, in the Strand.





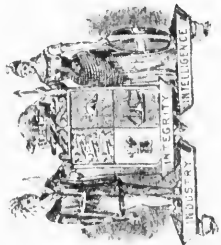
Y. By T. Maerſchalckm, 1763.

rch.  
Church

L. S.<sup>t</sup> Georges Chapel  
M. Moravian Meeting  
N. New Lutheran Meeting

X. Meal Market  
Y. Fly Market  
Z. Burlins Market

TR  
623.1. R57  
Shelf No.



TORONTO PUBLIC LIBRARY.

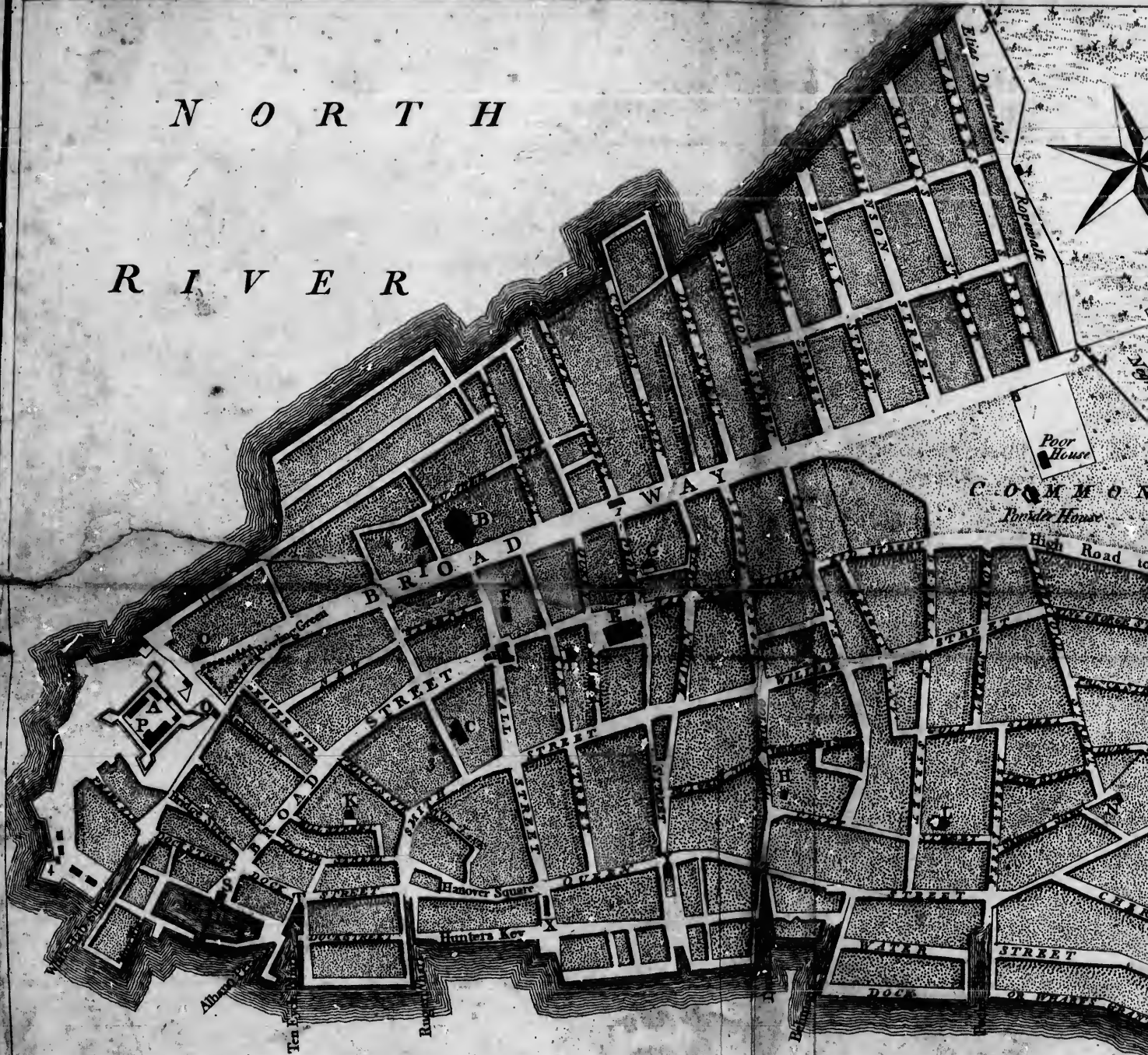
Reference Department.

THIS BOOK MUST NOT BE TAKEN OUT OF THE ROOM.

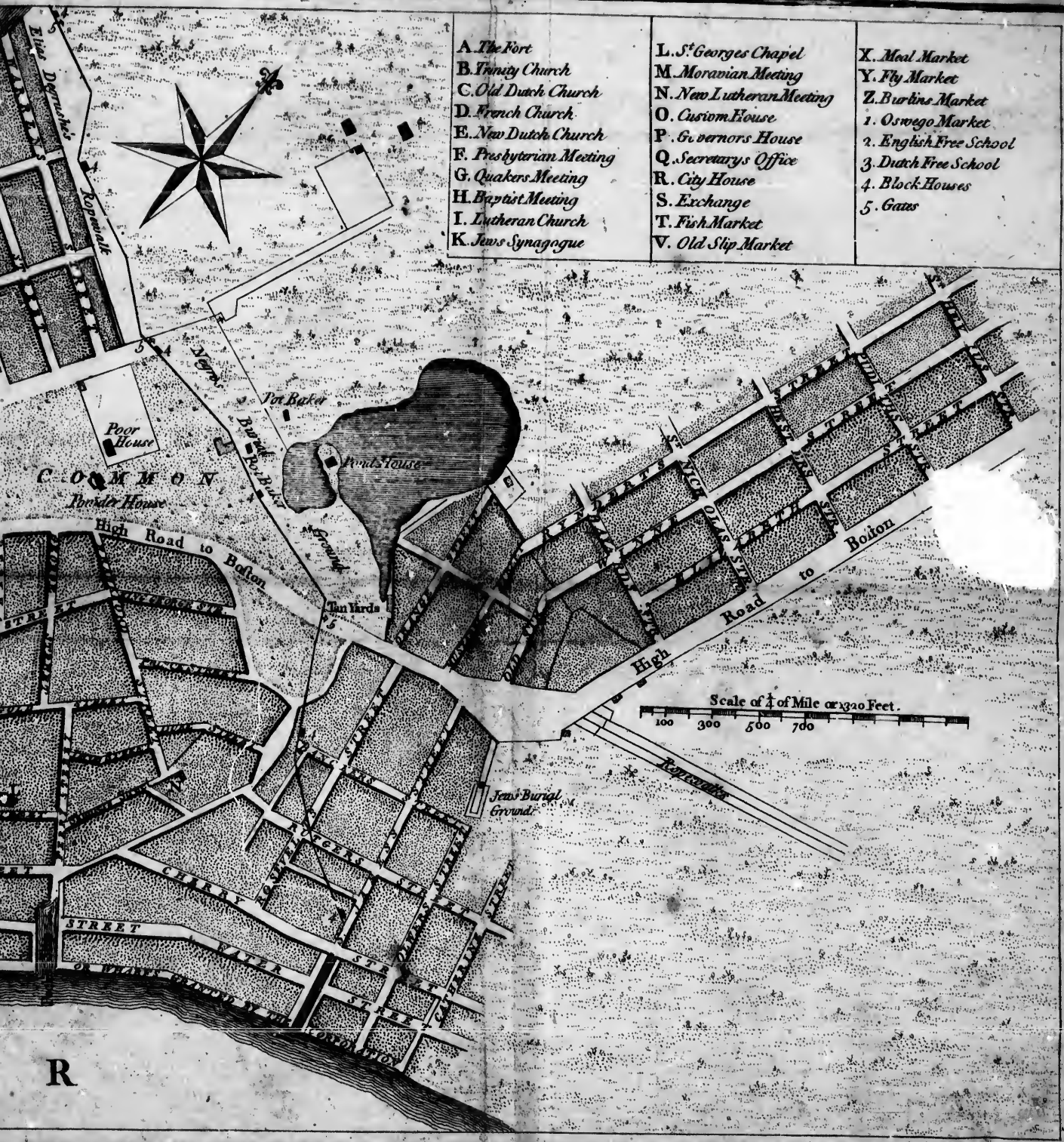
Feb 12<sup>th</sup> - 1913

A PLAN OF THE CITY OF NEW-YORK, REDUCED FROM

N O R T H  
R I V E R

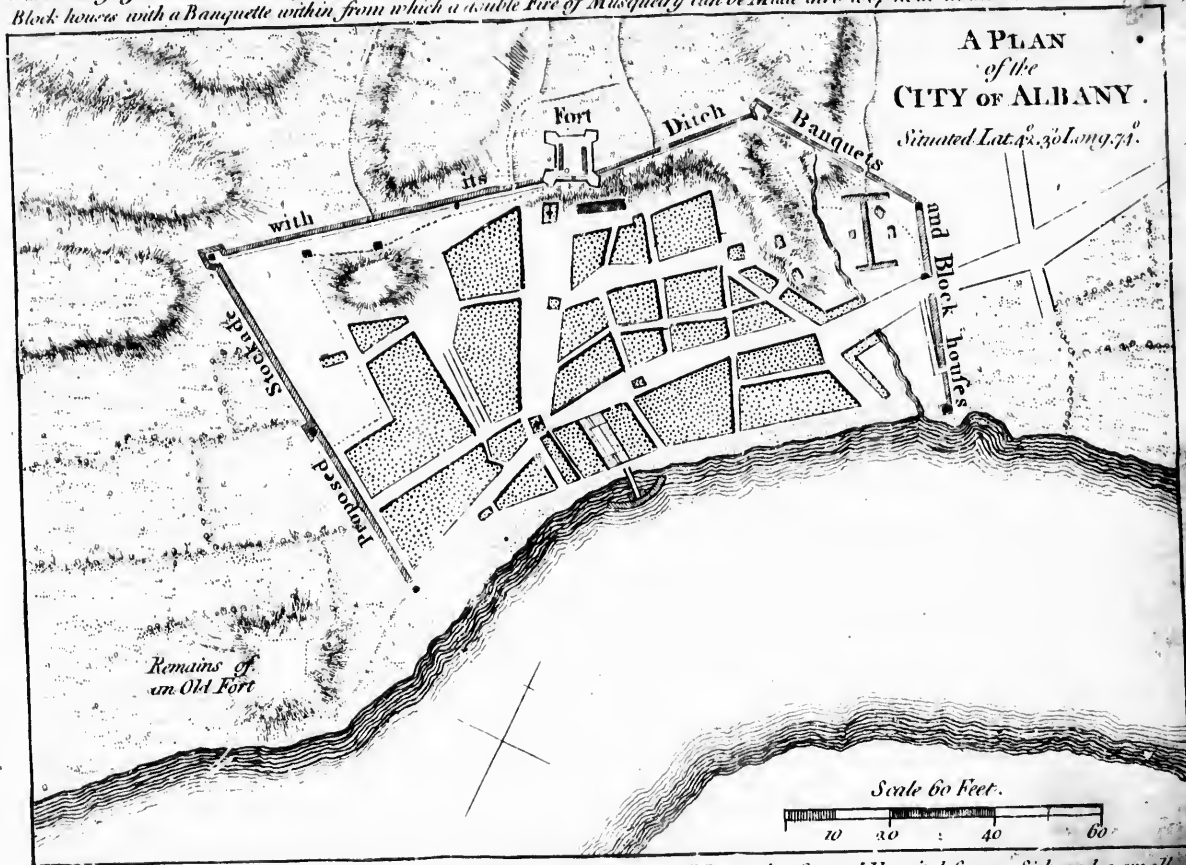


H A R B O U R

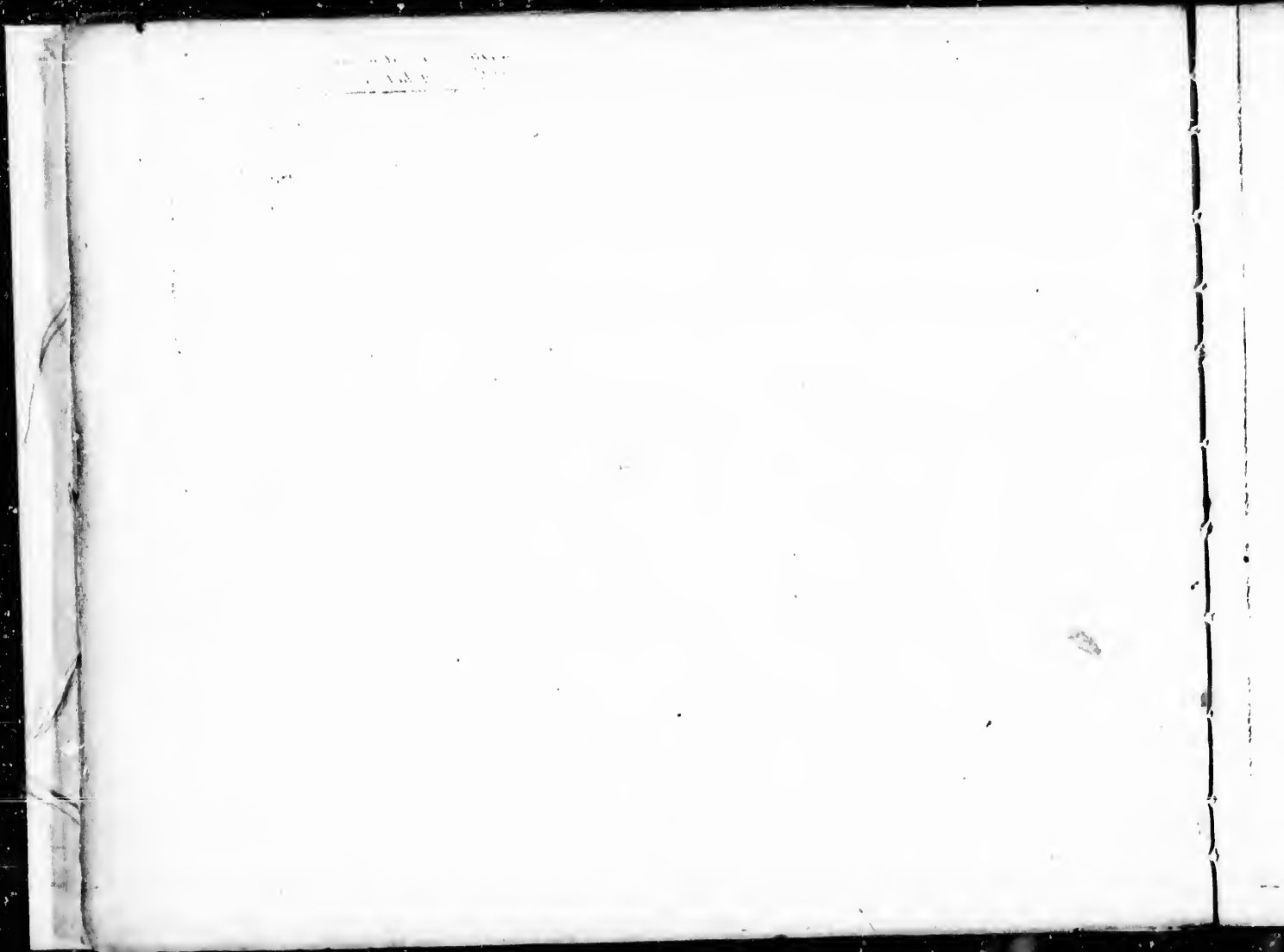




*With a Design for the better securing it by altering the ancient form of its Stockade adding a Ditch in Front defended by a Number of Block houses with a Banquette within from which a double Fire of Musquetry can be made thro loop holes in the Stockade.*



*Also a Design for a Magazine for Provisions, Barracks for to Complement a ... Men with a General Hospital for 400 Sick and a small Quay for the conveniency of Loading & Unloading the Vessels which will also serve for a Battery for 2 Guns to Command the River*



**PLAN of the TOWN  
and FORTIFICATIONS  
of  
MONTREAL  
or VILLE MARIE  
in CANADA.**



- A. A Dry Ditch about 8 Feet deep
- B.
- C.
- D. The Fort only a Cavalier without a Parapet
- E. Recollects Convent Gardens
- F. The Seminary
- G. The Parish Church
- H. The Nunnery Hospital
- I. The Powder Magazine
- K. Sisters of the Congregation and Garden
- L. The Jesuites Church and Convent
- M. A Small Chapel Burnt down
- N. The Arsenal and Yard for Canoos & Battaux



RIVER S<sup>T</sup> LAURENCE

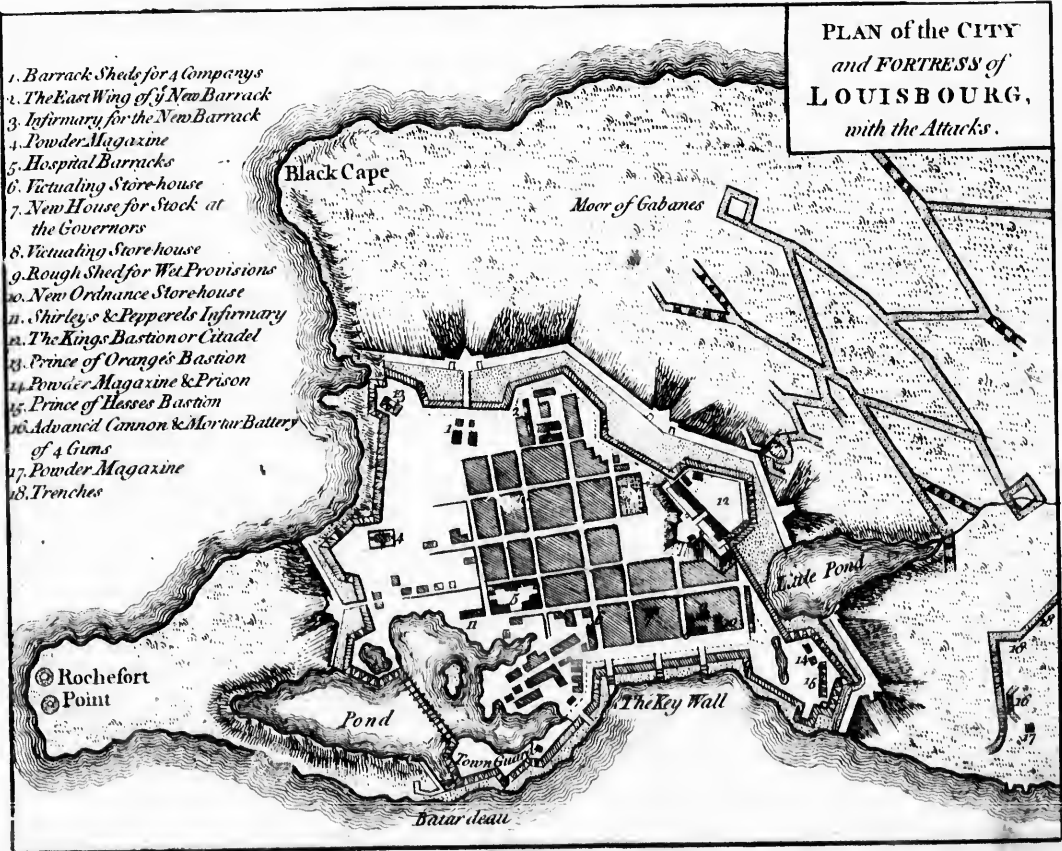
English Yards.  
0 100 200 300

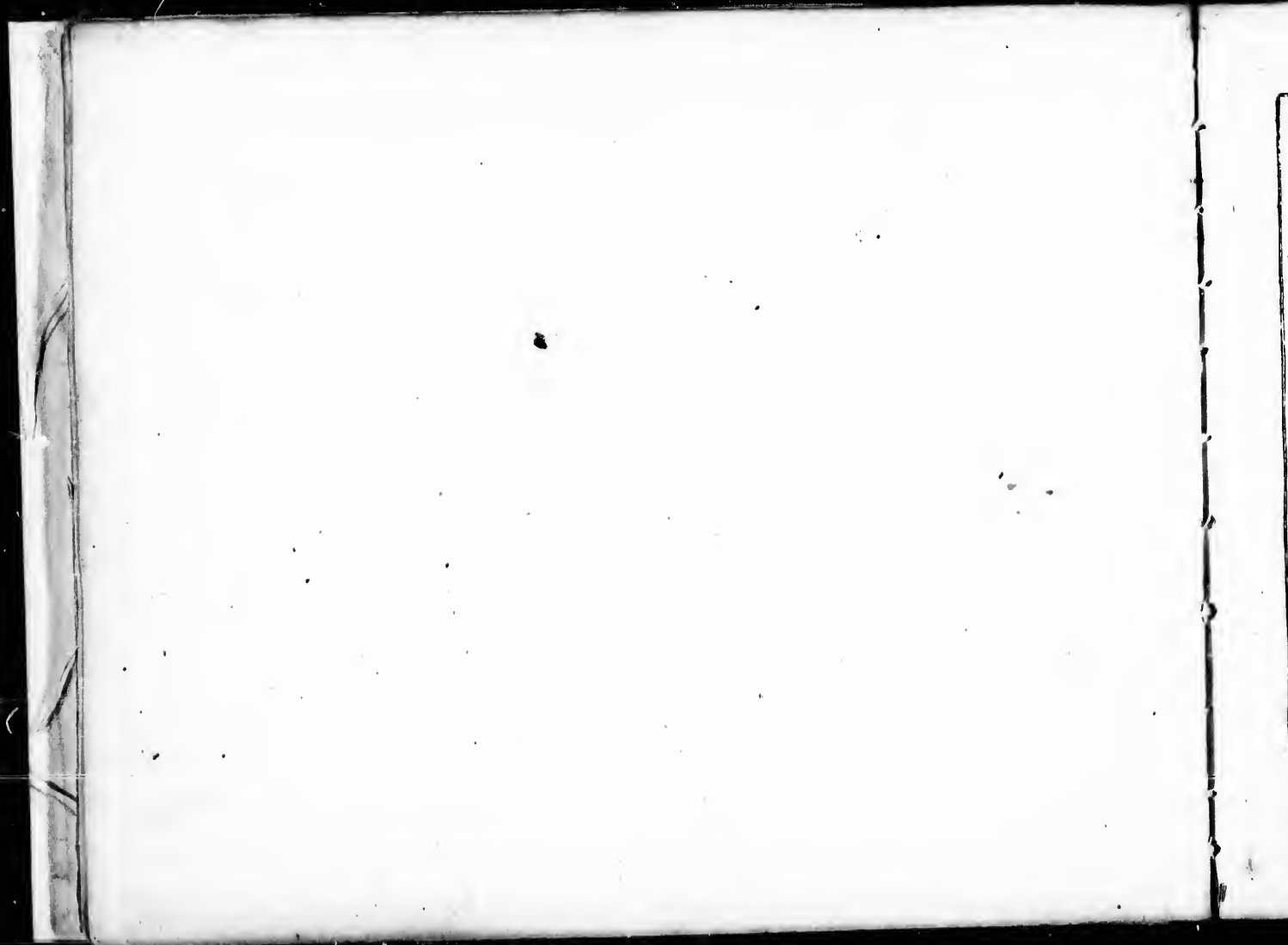




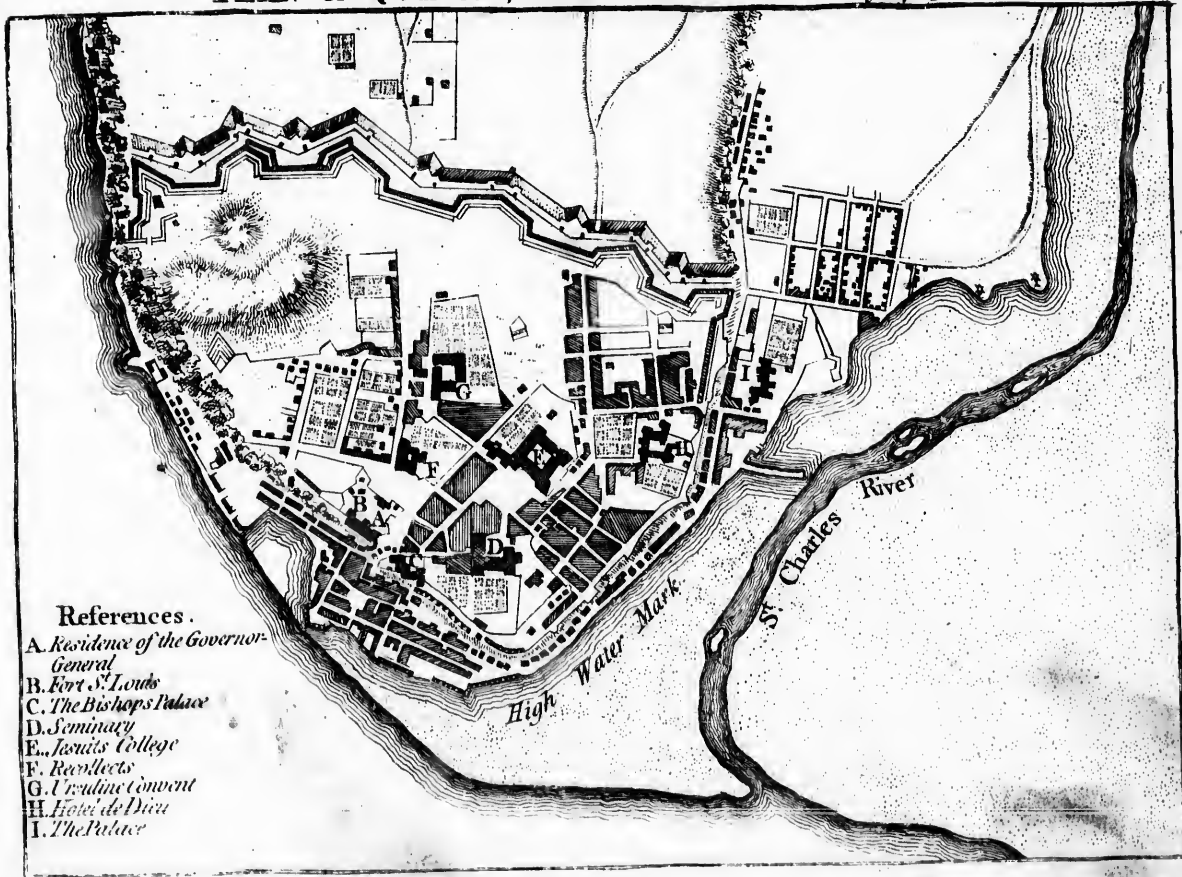
PLAN of the CITY  
and FORTRESSES of  
**LOUISBOURG,**  
with the Attacks.

1. Barrack Sheds for 4 Companies
2. The East Wing of the New Barrack
3. Infirmary for the New Barrack
4. Powder Magazine
5. Hospital Barracks
6. Victualing Store house
7. New House for Stock at the Governours
8. Victualing Store house
9. Rough Shed for Wet Provisions
10. New Ordnance Store house
11. Shirley's & Pepperels Infirmary
12. The Kings Bastion or Citadel
13. Prince of Oranges Bastion
14. Powder Magazine & Prison
15. Prince of Hesses Bastion
16. Advanced Cannon & Mortar Battery of 4 Guns
17. Powder Magazine
18. Trenches

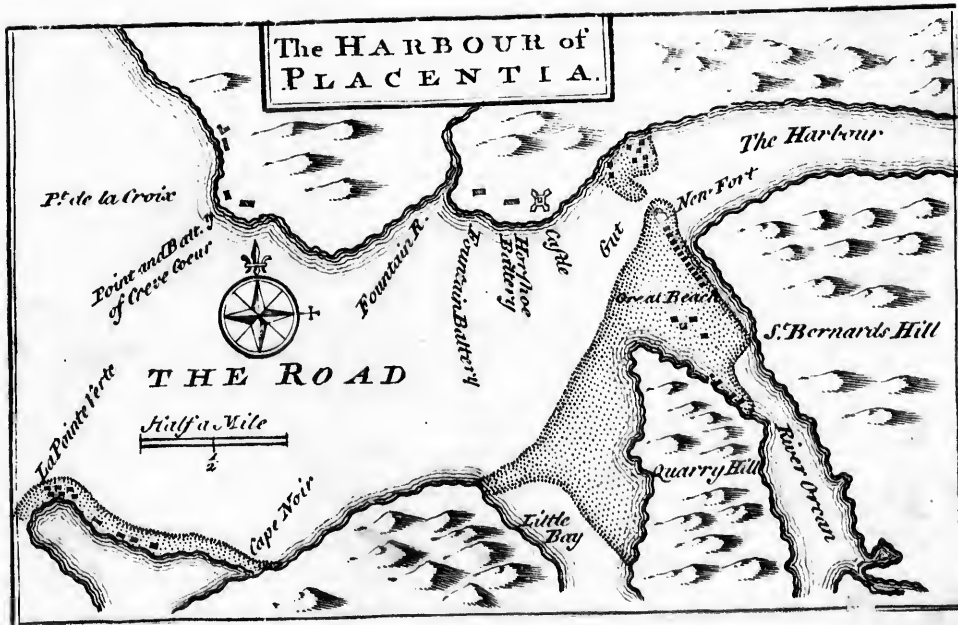




PLAN OF QUEBEC, Reduc'd from an Actual Survey 1763.



- References.
- A. Residence of the Governor-General
  - B. Fort St. Louis
  - C. The Bishop's Palace
  - D. Seminary
  - E. Jesuits College
  - F. Recollects
  - G. Ursuline Convent
  - H. Hotel de Dieu
  - I. The Palace

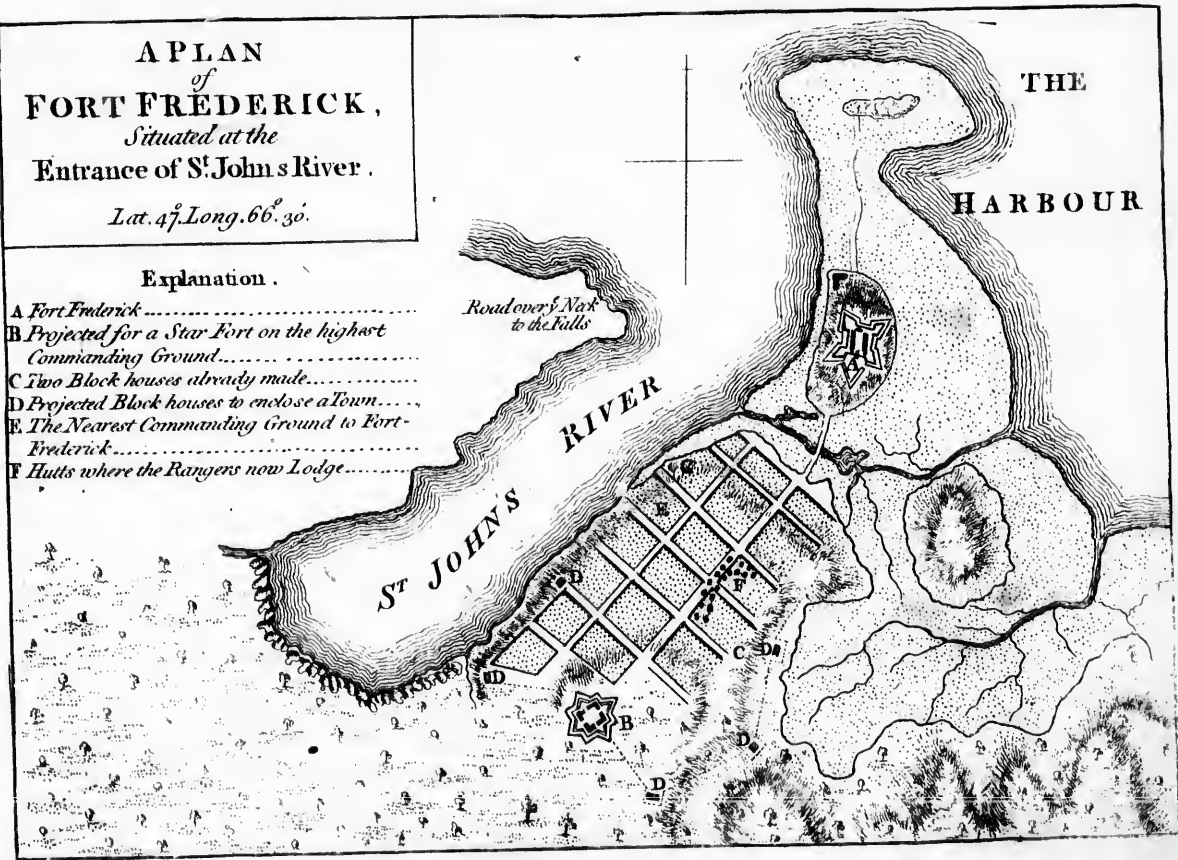


A PLAN  
of  
**FORT FRÉDERICK,**  
*Situated at the*  
Entrance of St. John's River.

*Lat. 47° Long. 66° 30'.*

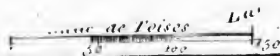
**Explanation .**

- A Fort Enderick.....
- B Projected for a Star Fort on the highest  
Commanding Ground.....
- C Two Block houses already made.....
- D Projected Block houses to enclose a town.....
- E The Nearest Commanding Ground to Fort-  
Frederick.....
- F Huts where the Rangers now Lodge.....





A PLAN of the Town



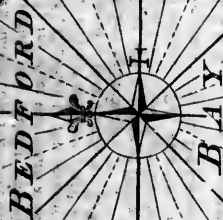
n settlements Stores.  
I Provisions Stores.

P. Andrews . Sculp.

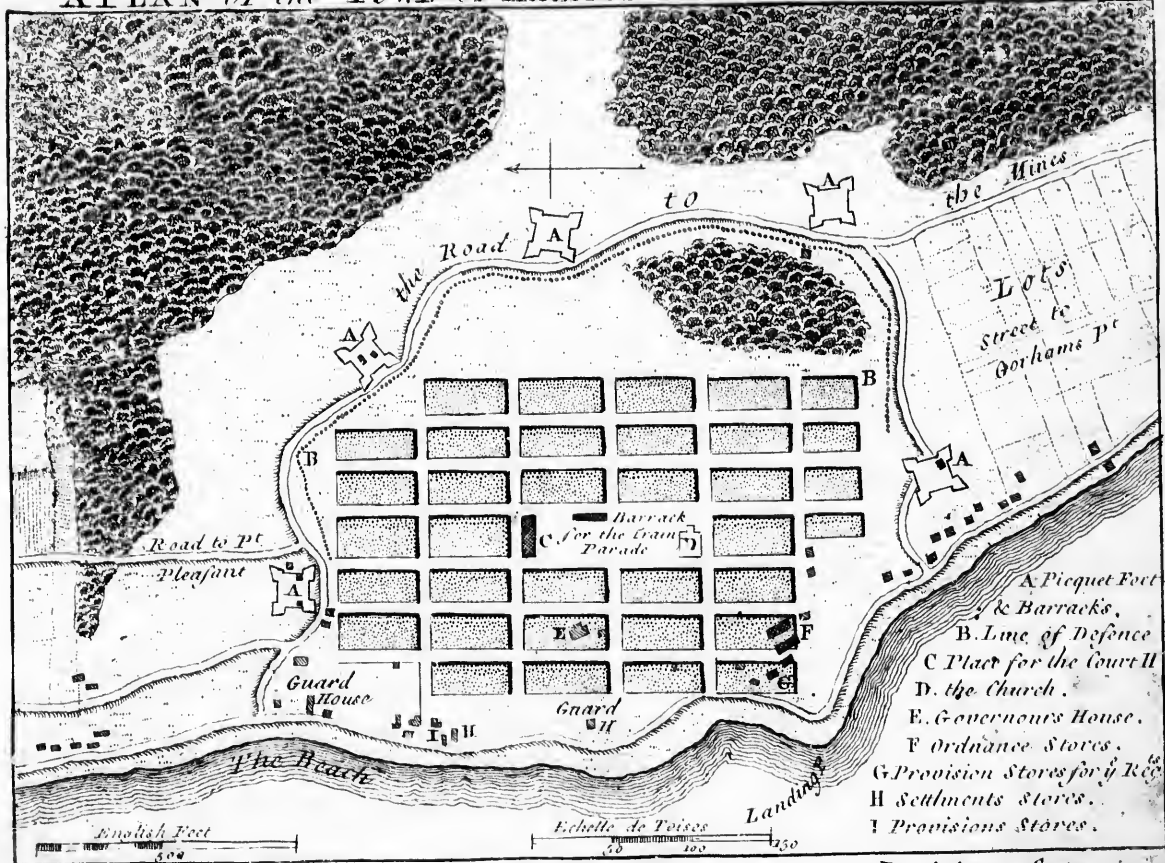


APLAY of the  
TOWN & HARBOUR  
of HALIFAX in  
NOVA SCOTIA

A Scale of a Mile

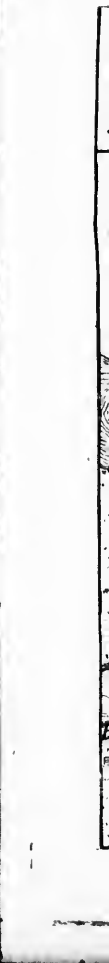
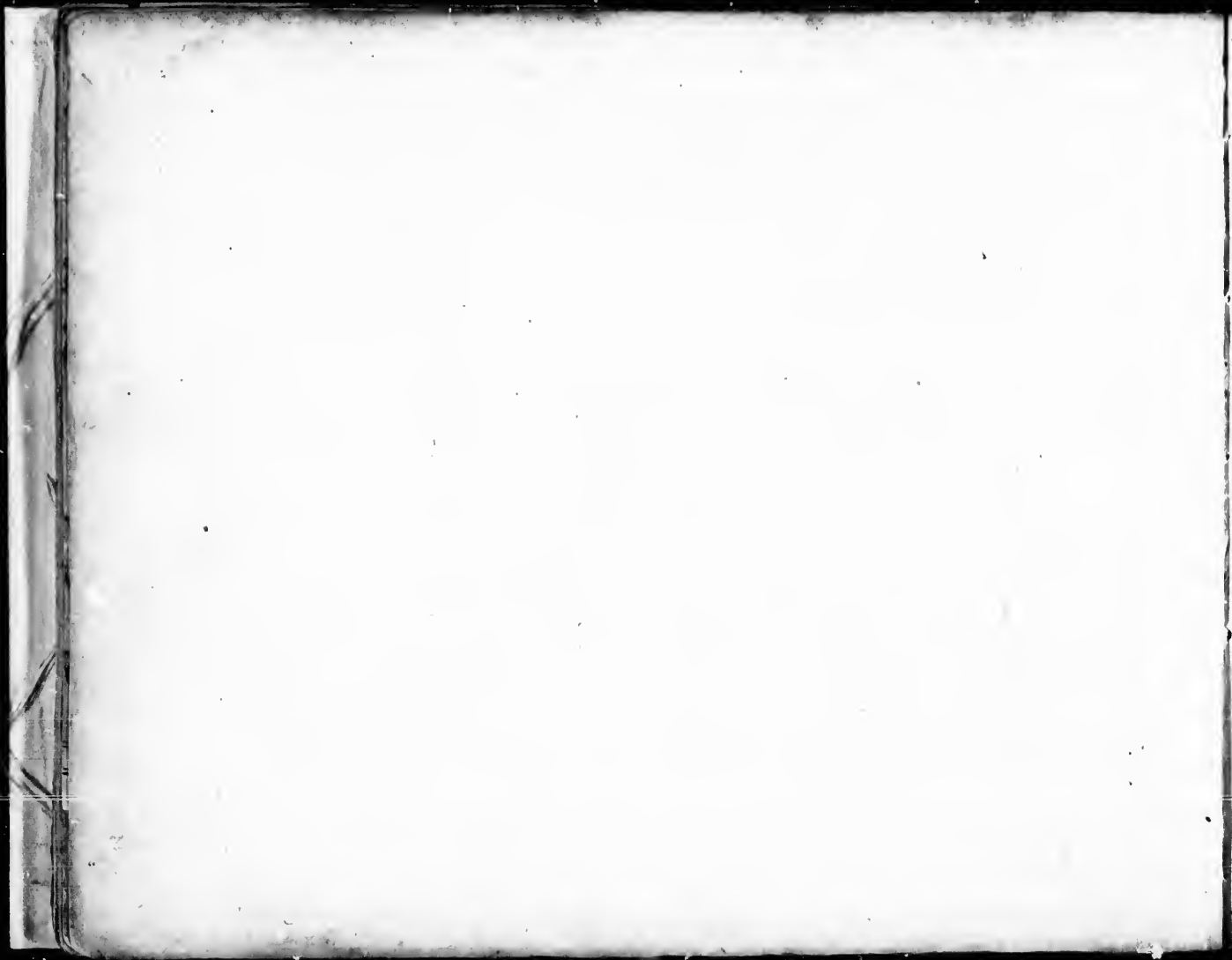


A PLAN of the TOWN of HALIFAX in NOVA SCOTIA



P. Andrews · Sculp

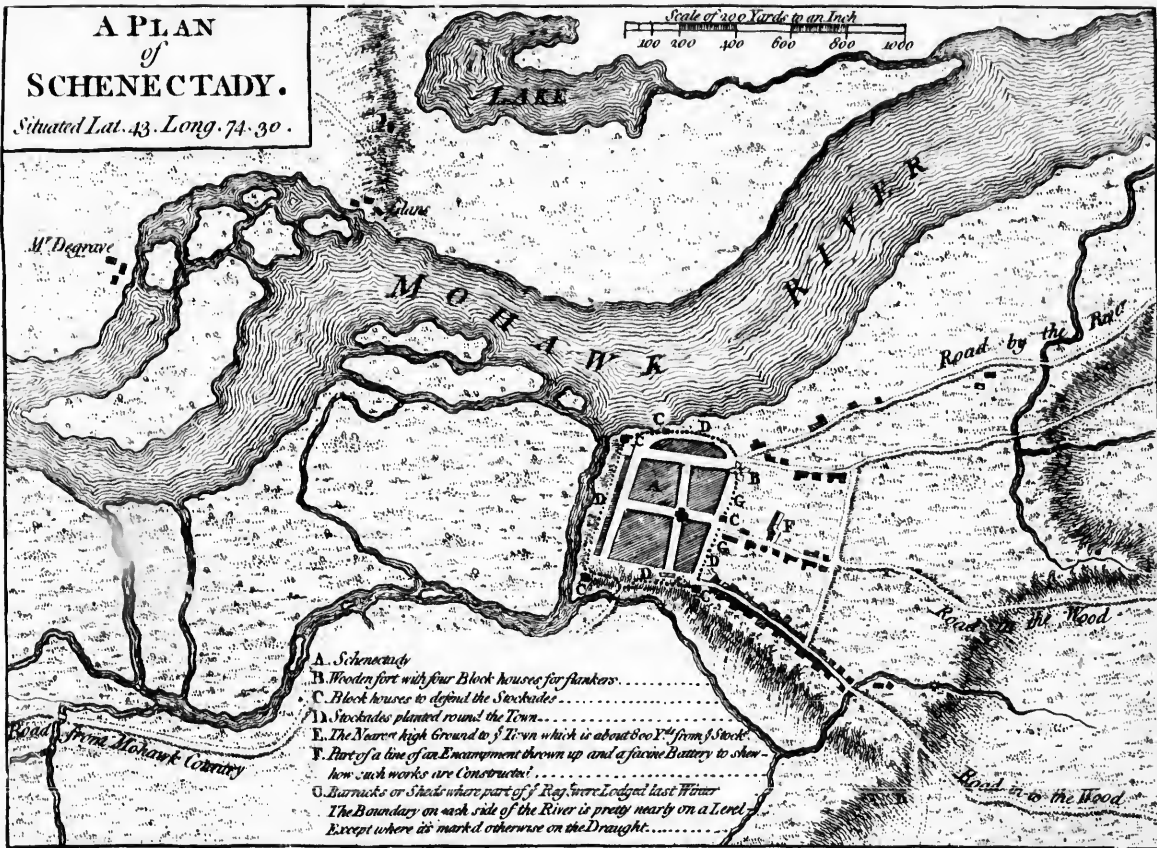
9



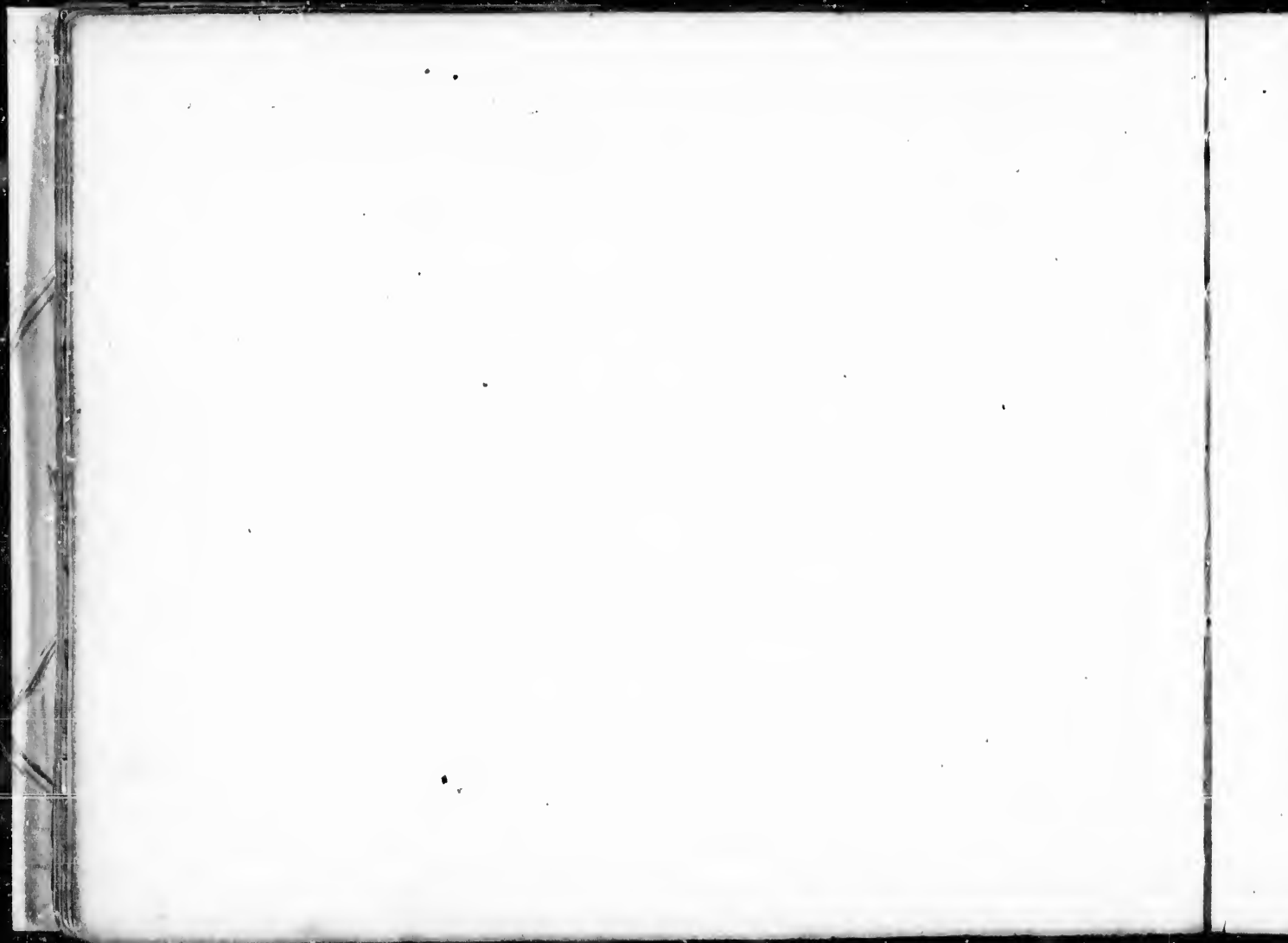
# A PLAN of SCHENECTADY.

Situated Lat. 43. Long. 74. 30.

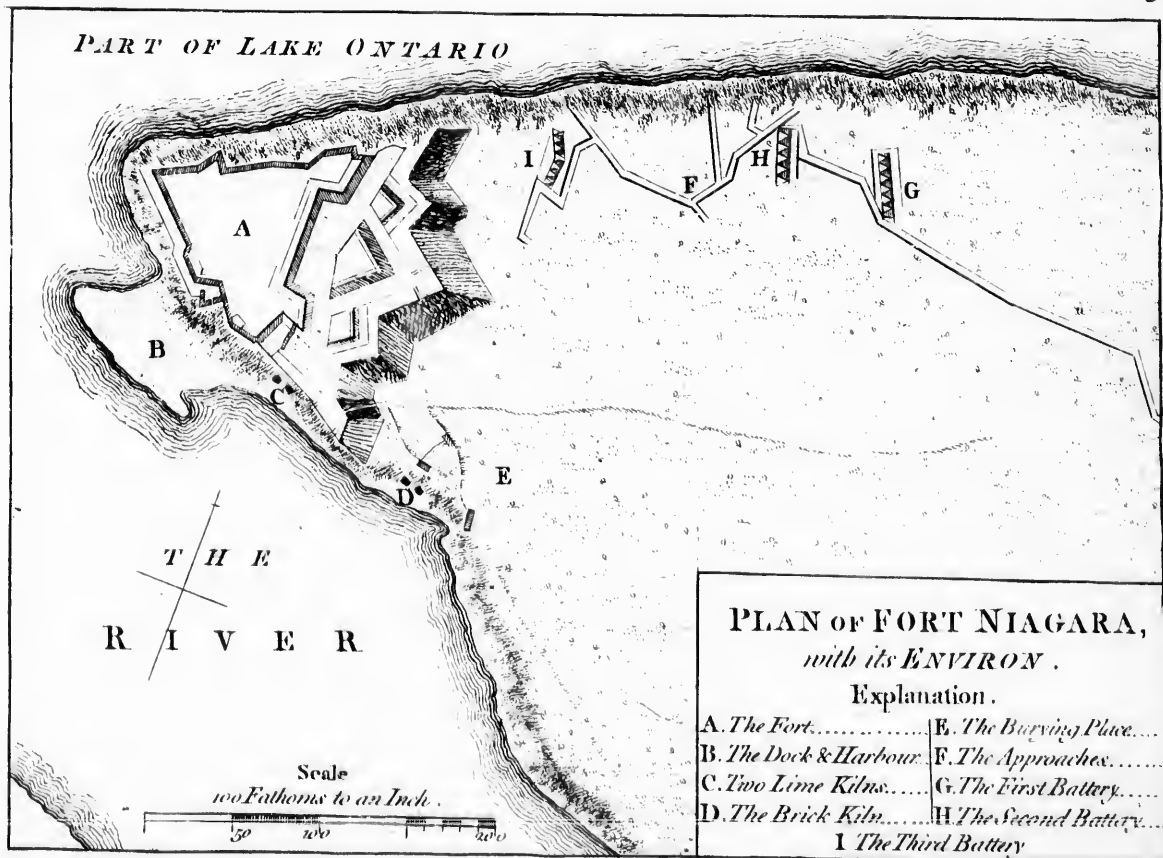
Scale of 200 Yards to an Inch  
100 200 300 400 500 600 700 800 900 1000



- A. Schenectady
- B. Wooden fort with four Block houses for flankers
- C. Block houses to defend the Stockades
- D. Stockades planted round the Town
- E. The Nearest high Ground to S. E. in which is about two Y<sup>ds</sup> from S. Stock
- F. Part of a line of an Embarquement thrown up and a facade Battery to show how such works are constructed
- G. Barnicks or Sheds where part of s<sup>t</sup> Reg<sup>t</sup> were Lodged last Winter
- The Boundary on each side of the River is pretty nearly on a Level - Except where it's mark'd otherwise on the Draught



PART OF LAKE ONTARIO



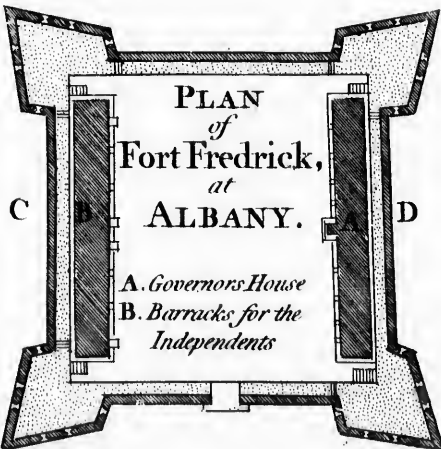
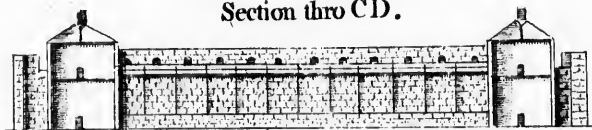
PLAN OF FORT NIAGARA,  
with its ENVIRON.

Explanation.

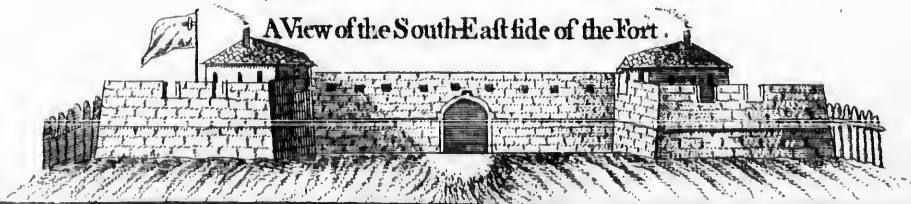
- |                            |                            |
|----------------------------|----------------------------|
| A. The Fort.....           | E. The Burying Place.....  |
| B. The Dock & Harbour..... | F. The Approaches.....     |
| C. Two Lime Kilns.....     | G. The First Battery.....  |
| D. The Brick Kiln.....     | H. The Second Battery..... |
|                            | I. The Third Battery.....  |



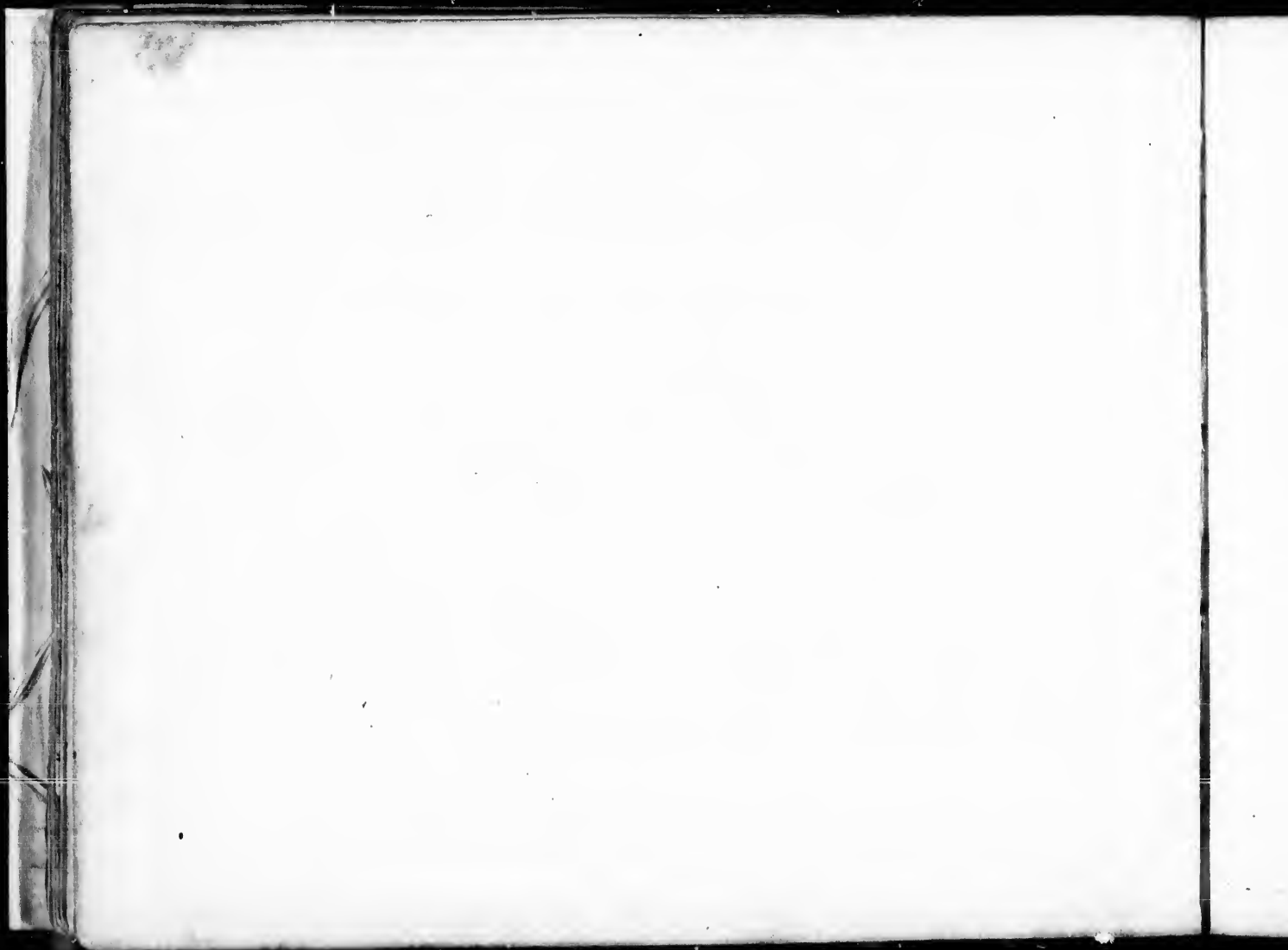
Section thro CD.



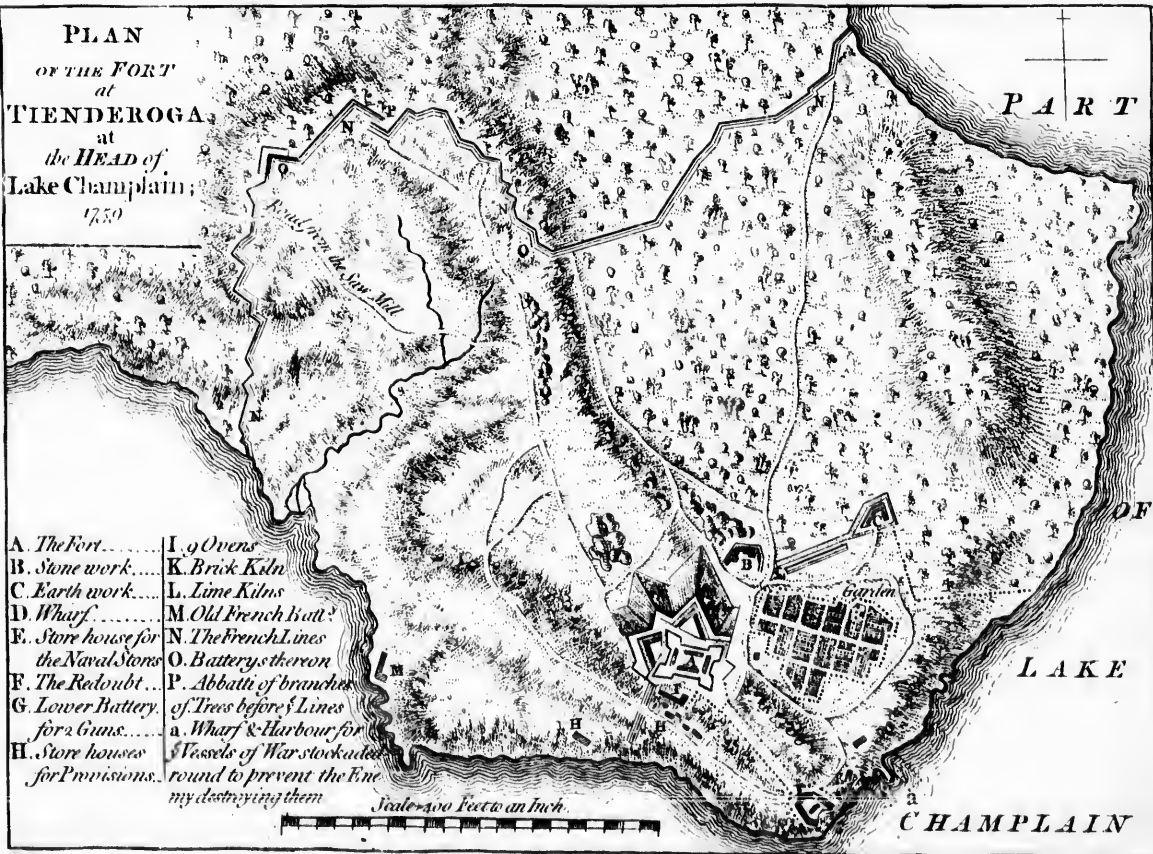
A View of the South-East side of the Fort.







**PLAN**  
**OF THE FORT**  
**at**  
**TIENDEROGA**  
**at**  
**the HEAD of**  
**Lake Champlain;**  
 1759



- |  |  |
|--|--|
| A. The Fort.....                       | I. Ovens   |
| B. Stone work.....                     | K. Brick Kln   |
| C. Earth work.....                     | L. Lime Kilns  |
| D. Wharf.....                          | M. Old French Boat   |
| E. Store house for<br>the Naval Stores | N. The French Lines  |
| F. The Redoubt...                      | O. Battery thereon   |
| G. Lower Battery<br>for 2 Guns.....    | P. Abbatt of branches<br>of Trees before Lines   |
| H. Store houses<br>for Provisions.     | a. Wharf & Harbour for<br>Vessels of War stockaded<br>round to prevent the Ene<br>my destroying them |

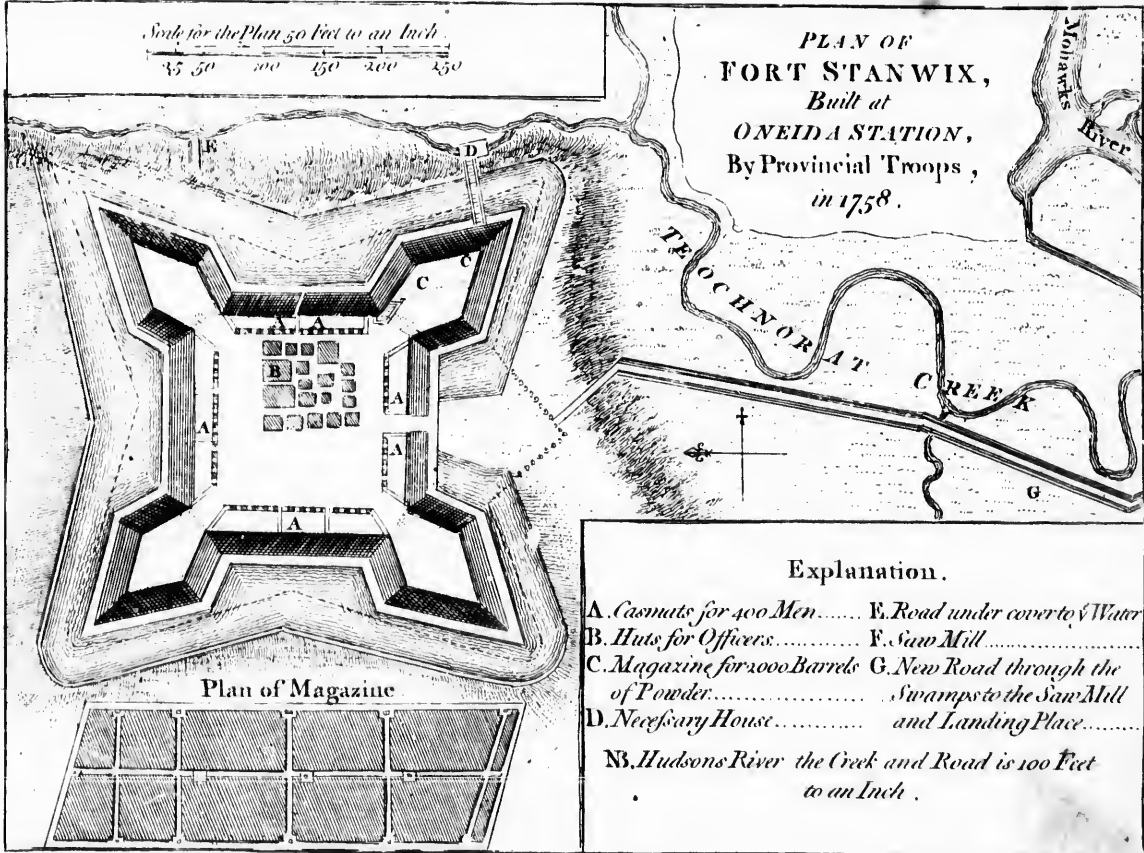
Scale 400 Feet to an Inch





Scale for the Plan 50 Feet to an Inch  
45 50 100 150 200 250

PLAN OF  
FORT STANWIX,  
Built at  
ONEIDA STATION,  
By Provincial Troops,  
in 1758.



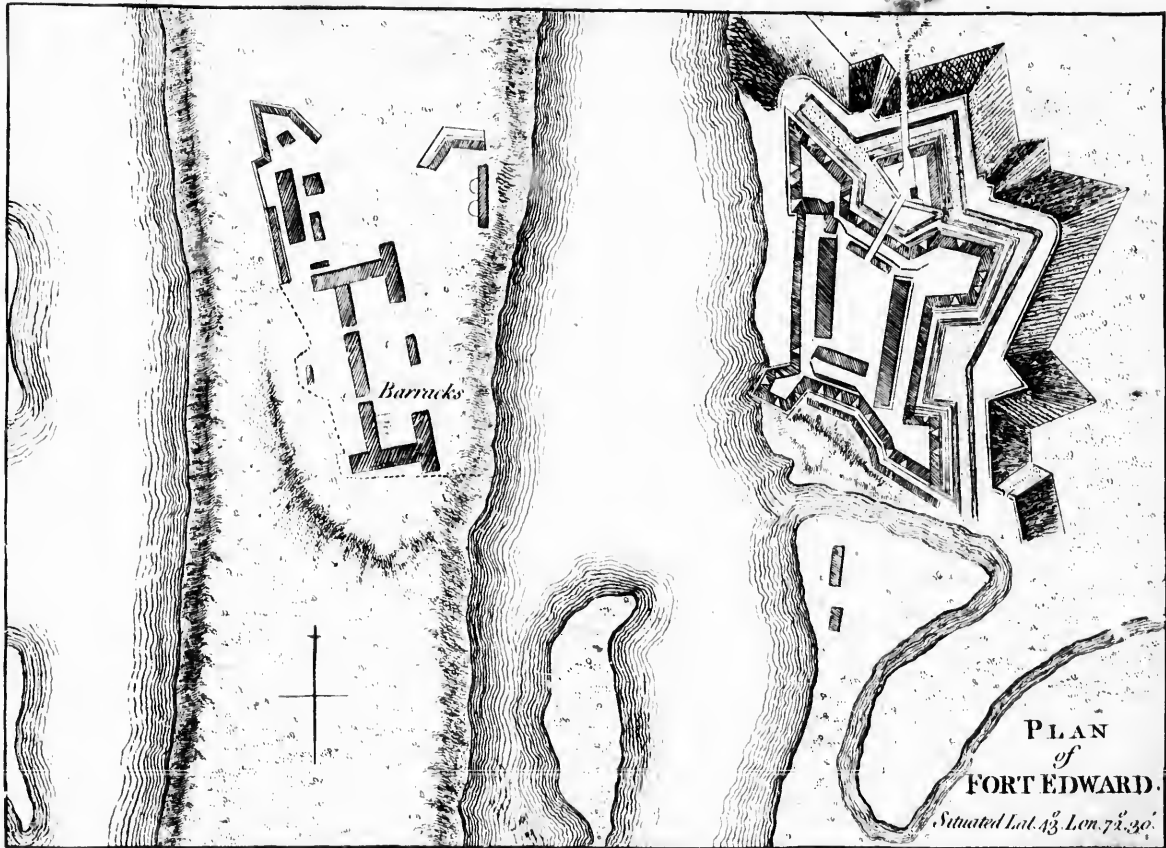
Plan of Magazine

Explanation.

- A. Casemate for 400 Men.....
- B. Huts for Officers.....
- C. Magazine for 2000 Barrels of Powder.....
- D. Necessary House.....
- E. Road under cover to Water.....
- F. Saw Mill.....
- G. New Road through the Swamps to the Saw Mill and Landing Place.....

NB. Hudsons River the Creek and Road is 100 Feet to an Inch.





PLAN  
of  
FORT EDWARD.

Situated Lat. 43. Lon. 72. 30.

*A. For*

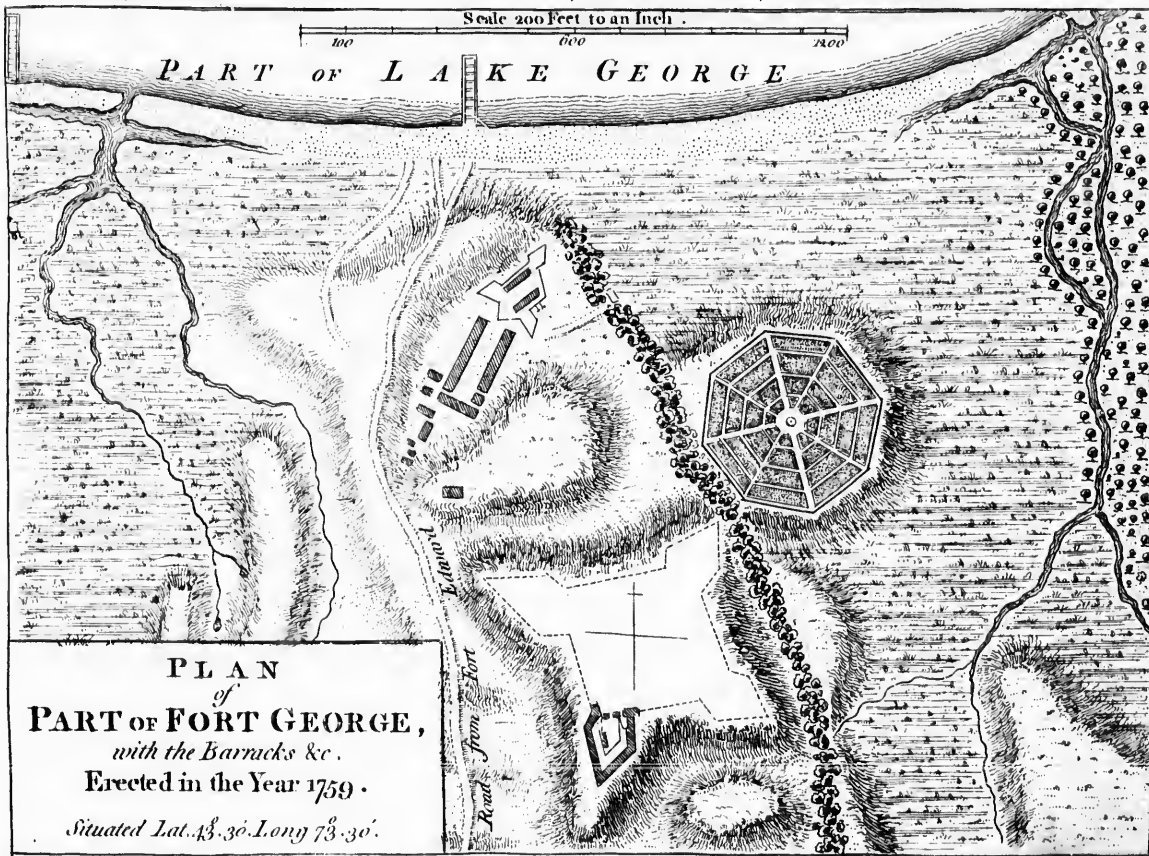
*other w*



**PA**

*A. Fort shewing what was finished. 1. Officers Barracks. 2. Soldiers Barracks. 3. Powder Magazine. B. Stockaded Fort erected to serve during the time the other was Building. Guard Room the Kitchen. 6. 6. Store houses. 7. Saw Mill in the Swamp to the south westward.*

Scale 200 Feet to an Inch.









1000 2000 3000 4000  
 1000 feet to an Inch.

Symosons Wharf  
 Symosons Barn  
 PART  
 OF  
 HATED  
 ISLAND  
 Battery C 12 Guns  
 Battery B 20 Guns  
 Battery D 20 Guns  
 Signal house proposed to receive Signals from Sandy Hook and return them to New York  
 Alarm Beacons which serves at present

C H A N N E L

OF  
 NEW YORK

Battery A 15 Guns  
 Wharf  
 Dennysses house  
 Battery E 10 Guns  
 Battery F 20 Guns  
 Cartel yows Wharf  
 Battery 20 Guns

**PLAN of the NARROWS**  
*about 10 Miles from*  
**NEW YORK.**  
 A.B.C.D.E.F. are Retrenched Batterys containing in the whole 90 Guns calculated to keep a continual Fire of 6 Guns at a Time as it is the only Channel that leads up to New York it is very necessary for its Preservation this Work should be done.

RET

FO

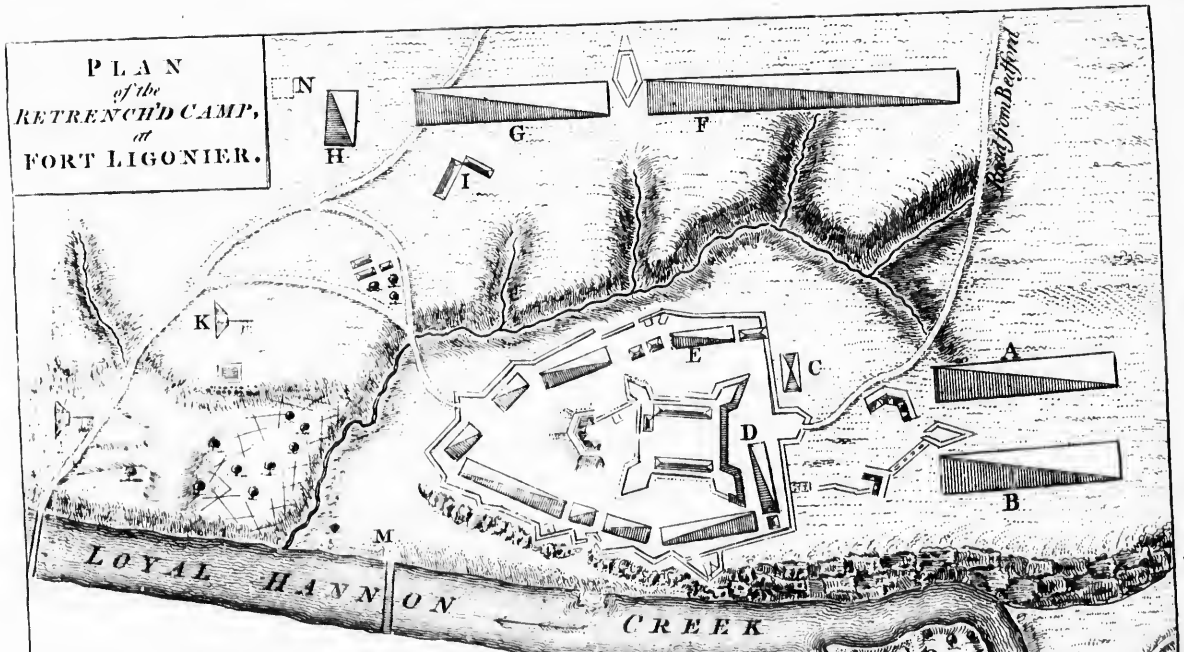
A

B

C

D

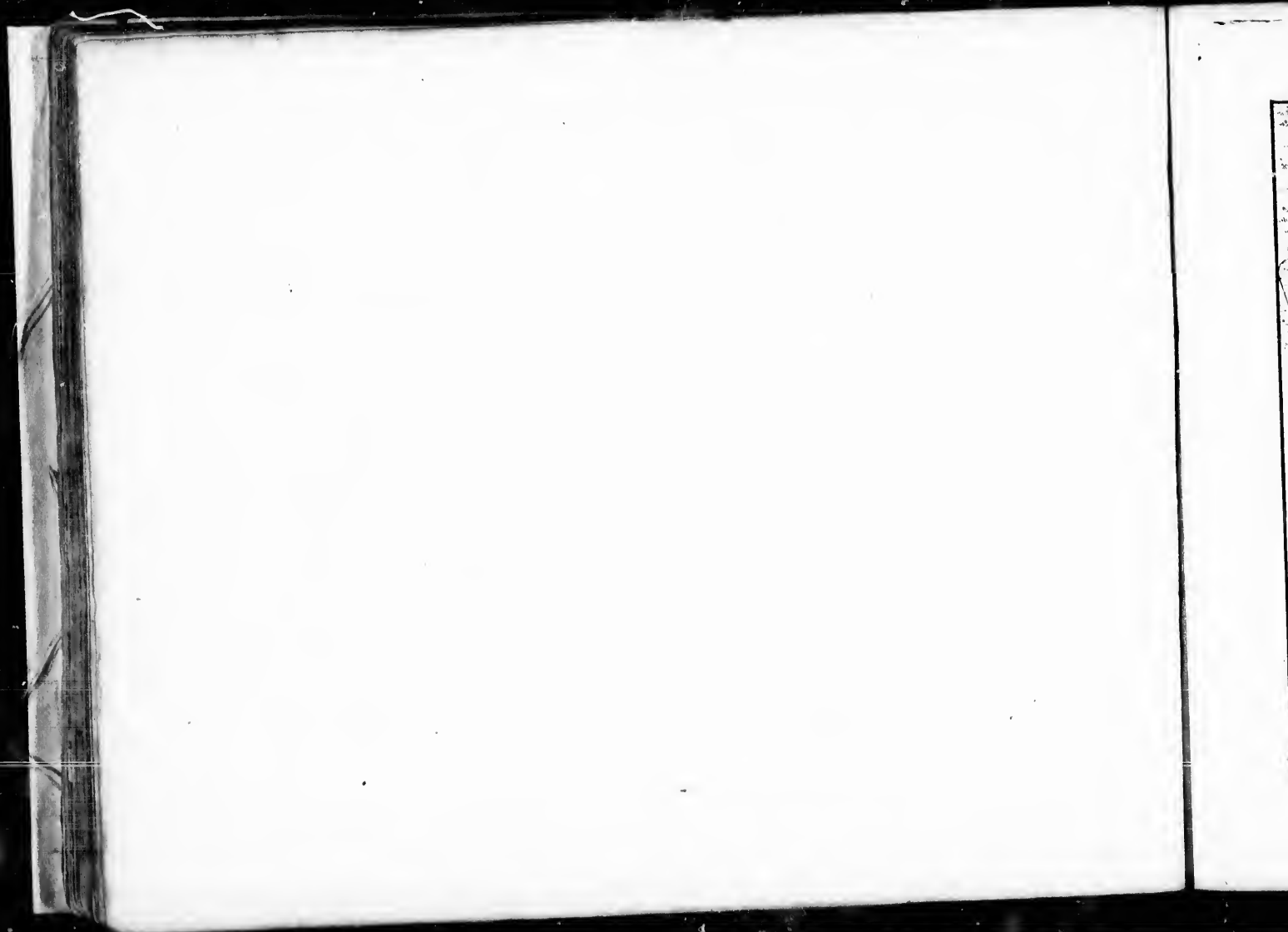
**PLAN**  
of the  
**RETRENCH'D CAMP,**  
at  
**FORT LIGONIER.**



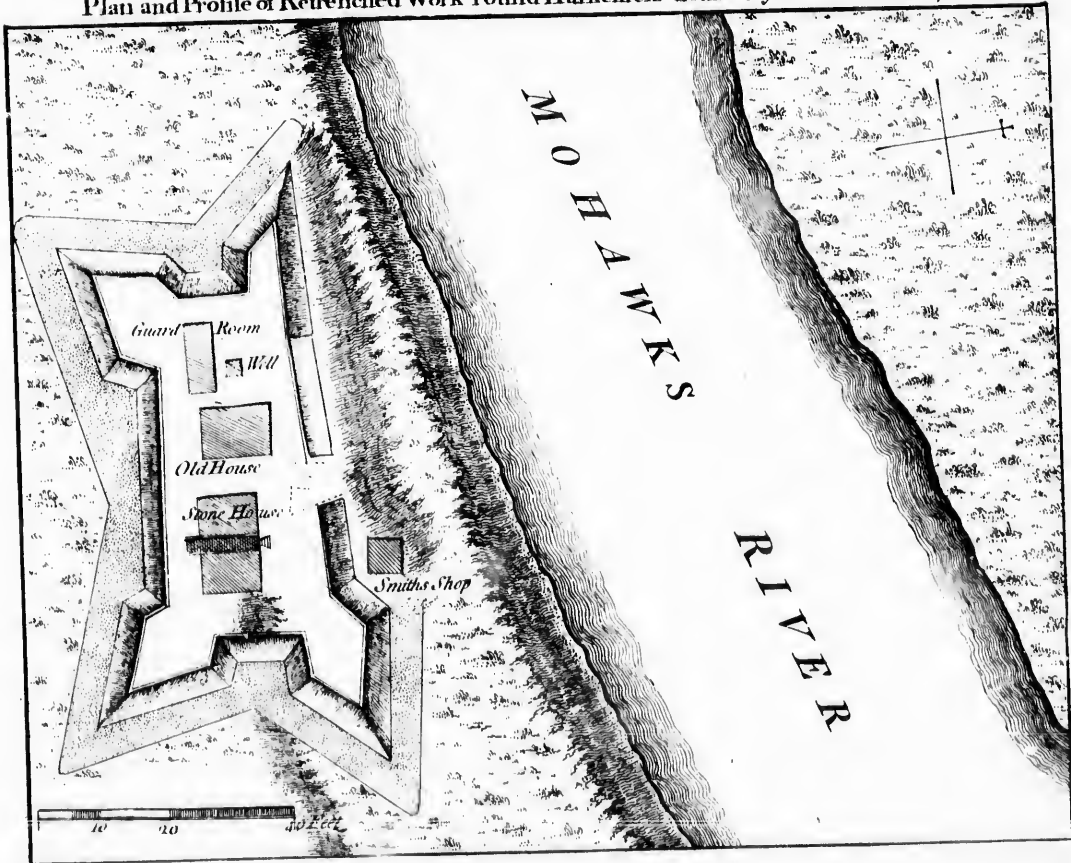
**Explanation.**

- |   |  |                                       |
|---|--|---------------------------------------|
| <b>A</b> First Battalion of Pennsylvania's Encampment | <b>E.</b> Second Battalion of Pennsylvanians | <b>I</b> Hospitals                    |
| <b>B</b> Marylanders & Carolina Men                   | <b>F</b> First Highland Battalion            | <b>K</b> Indian Encampment            |
| <b>C</b> Royal Artillery                              | <b>G</b> Second Virginia Regiment            | <b>L</b> Bullock Pen                  |
| <b>D</b> First Virginia Regiment                      | <b>H</b> Royal Americans                     | <b>M</b> Dam for intended Sawing Mill |
| <b>N</b> The Retrenchment & Redoubts are Made of Logs |  | <b>N</b> Redoubt not finished         |

Scale of 500 Feet to one Inch  
100 200 300

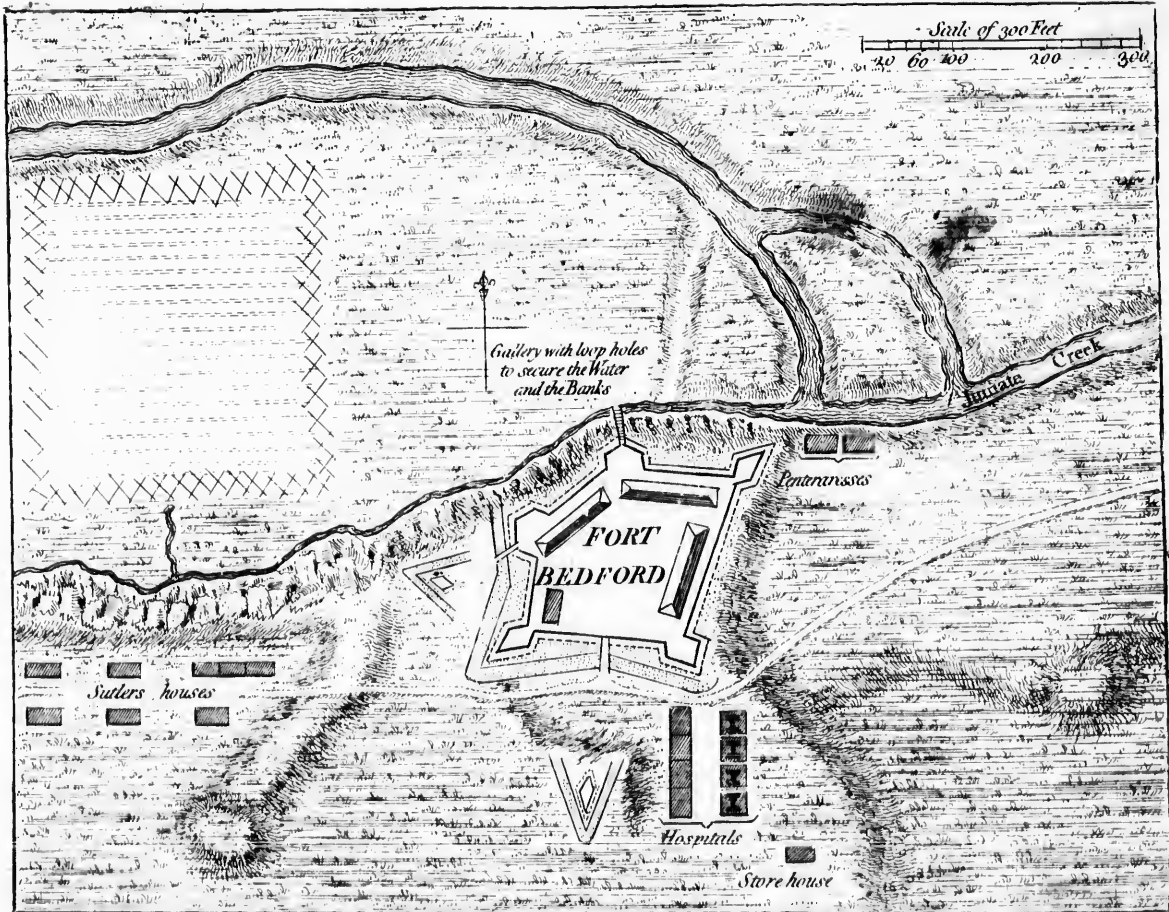


Plan and Profile of Retrenched Work round Harkemeis house at German Flats 1756

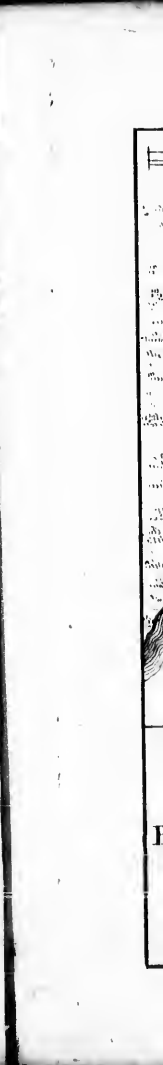


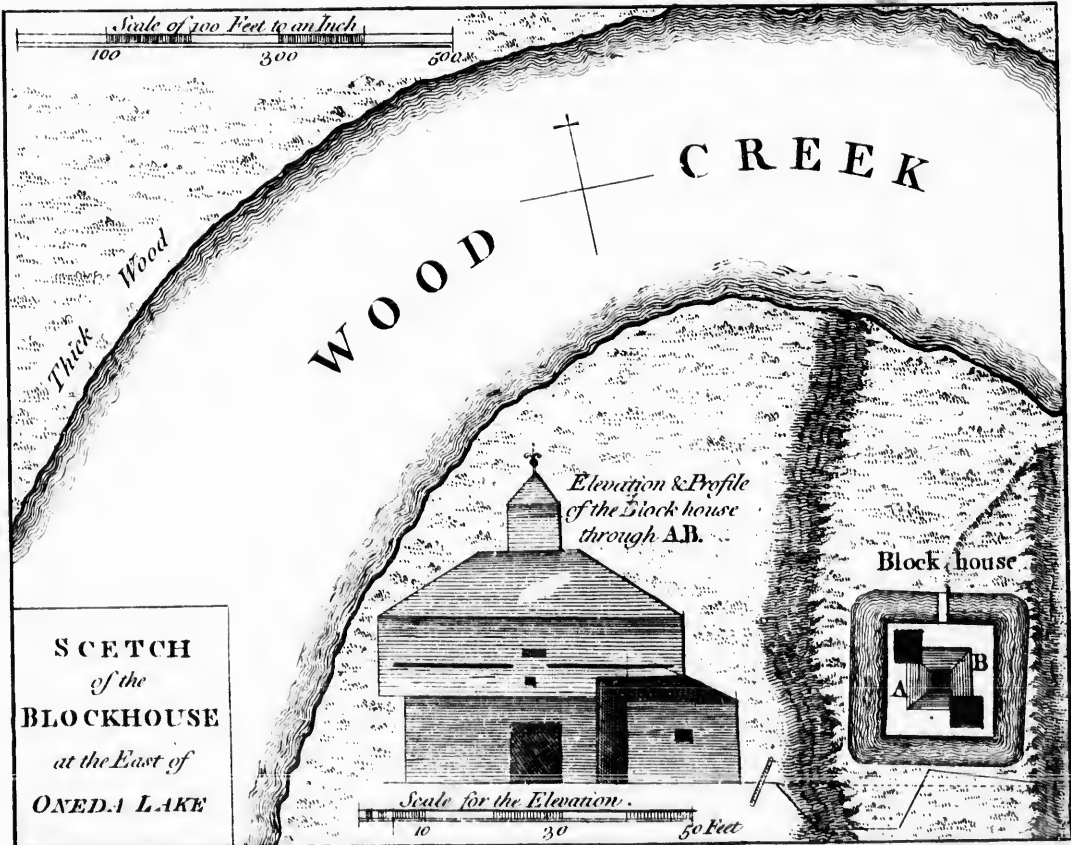
Handwritten text and diagrams on the right margin of the page, including a vertical column of text and several small diagrams or sketches.











**SCETCH**  
*of the*  
**BLOCKHOUSE**  
*at the East of*  
**ONEDA LAKE**

*Elevation & Profile  
of the Block house  
through AB.*

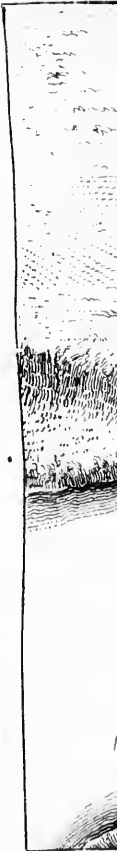
**Block house**

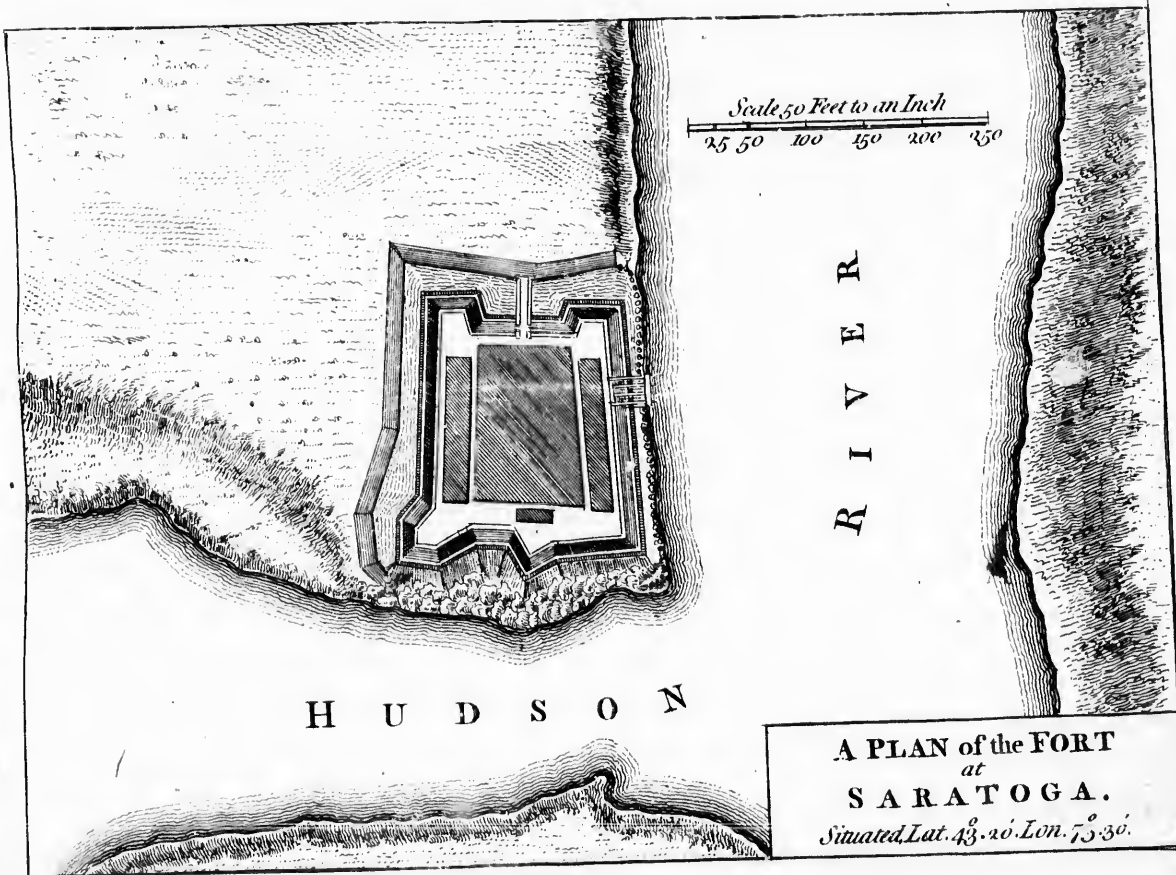
*Scale for the Elevation.*

*Scale of 100 Feet to an Inch*

100 300 500

10 30 50 Feet





H U D S O N

R I V E R

A PLAN of the FORT  
 at  
 SARATOGA.  
 Situated Lat. 43. 20. Lon. 73. 30.

A.

BZ

F

L

Small decorative border with text

Small decorative border with text

Small decorative border with text

Small decorative border with text

Small decorative border with text

Small decorative border with text

Small decorative border with text

Small decorative border with text

Small decorative border with text

Small decorative border with text

Small decorative border with text

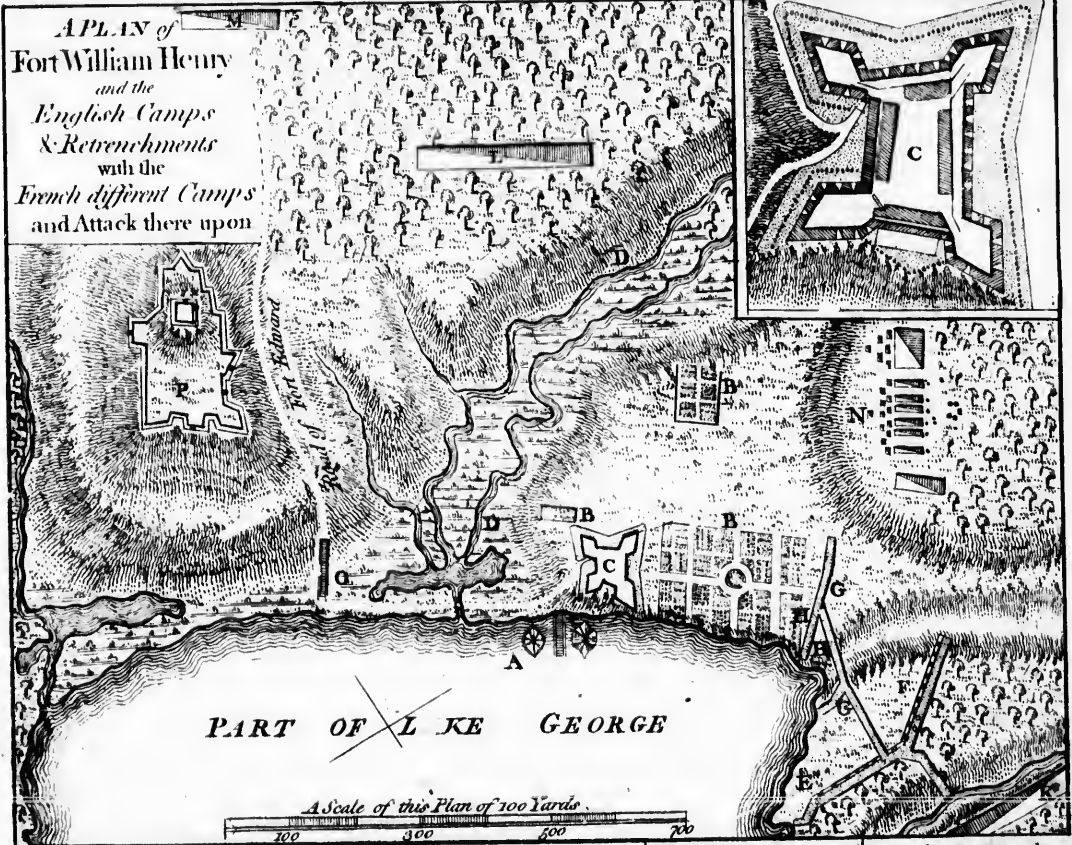
Small decorative border with text

Small decorative border with text

Small decorative border with text

A. The Dock  
 B. The Garrison Gardens  
 C. Fort William Henry  
 D. The Different Morasses  
 E. The Enemy's 1<sup>st</sup> Battery of 9 Guns & 2 Mortars  
 F. Their 2<sup>d</sup> Battery of 10 Guns and 3 Mortars  
 G. Their Approaches  
 H. Two Intended Batteries

**APLAN of**  
**Fort William Henry**  
*and the*  
*English Camps*  
*& Retrenchments*  
*with the*  
*French different Camps*  
*and Attack there upon*

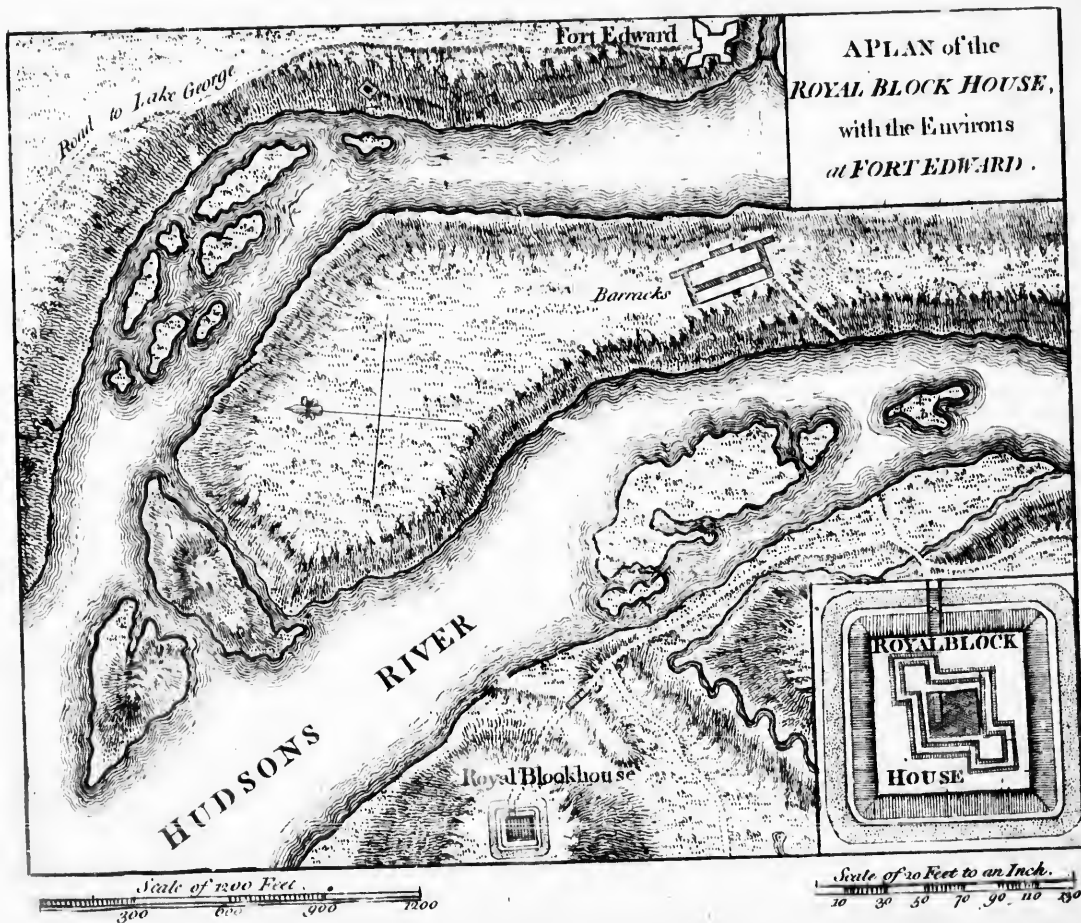


PART OF LAKE GEORGE

A Scale of this Plan of 100 Yards  
 100 300 500 700

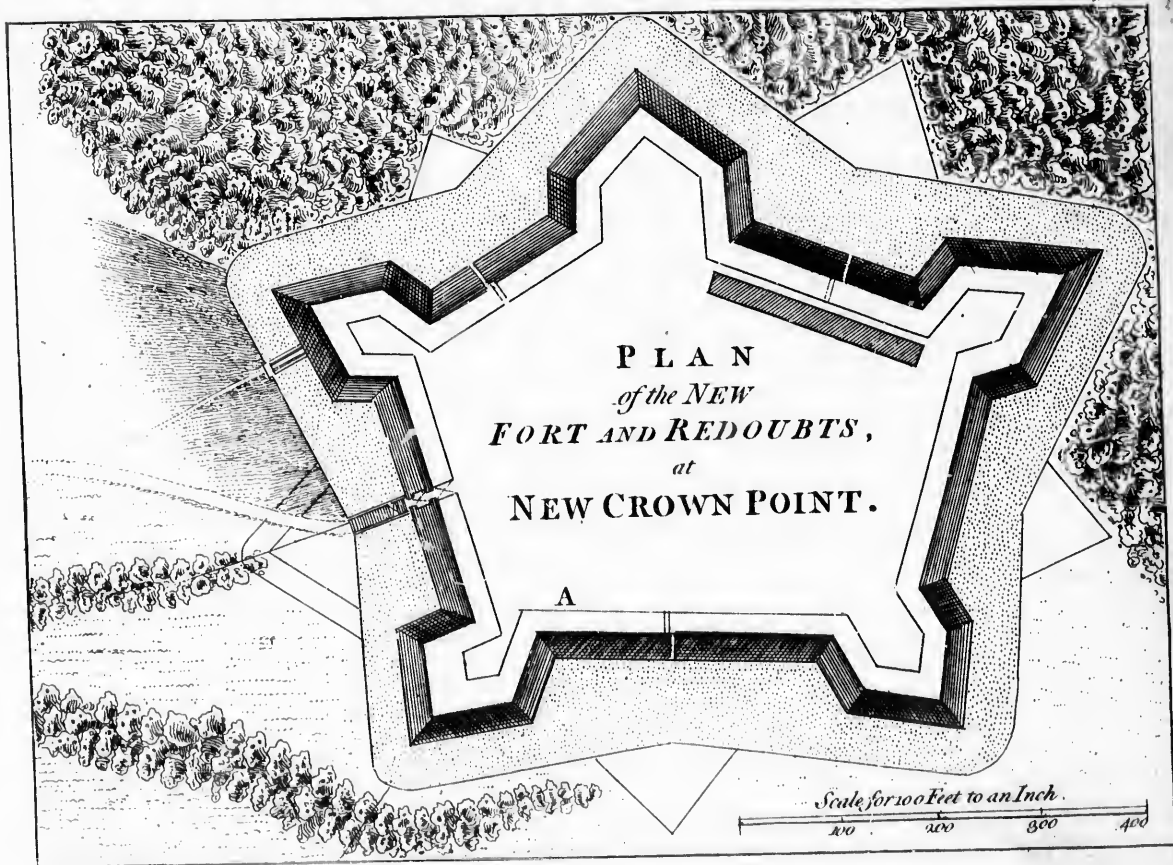
I. The Place where they landed their Artillery	the main Body of Army	M. M. de la Corne with 1500 Canadians & Indians	English Troops Encamped before they was ordered by G. O. the bridge over y. Morass	Retrenchment ans made
K. M. Moncaubs Camp with	L. M. de Levis Camp with 3000 Regulars & Canadians	N. The Ground where the	Wild to the Place where the	P. The English Retrenchment







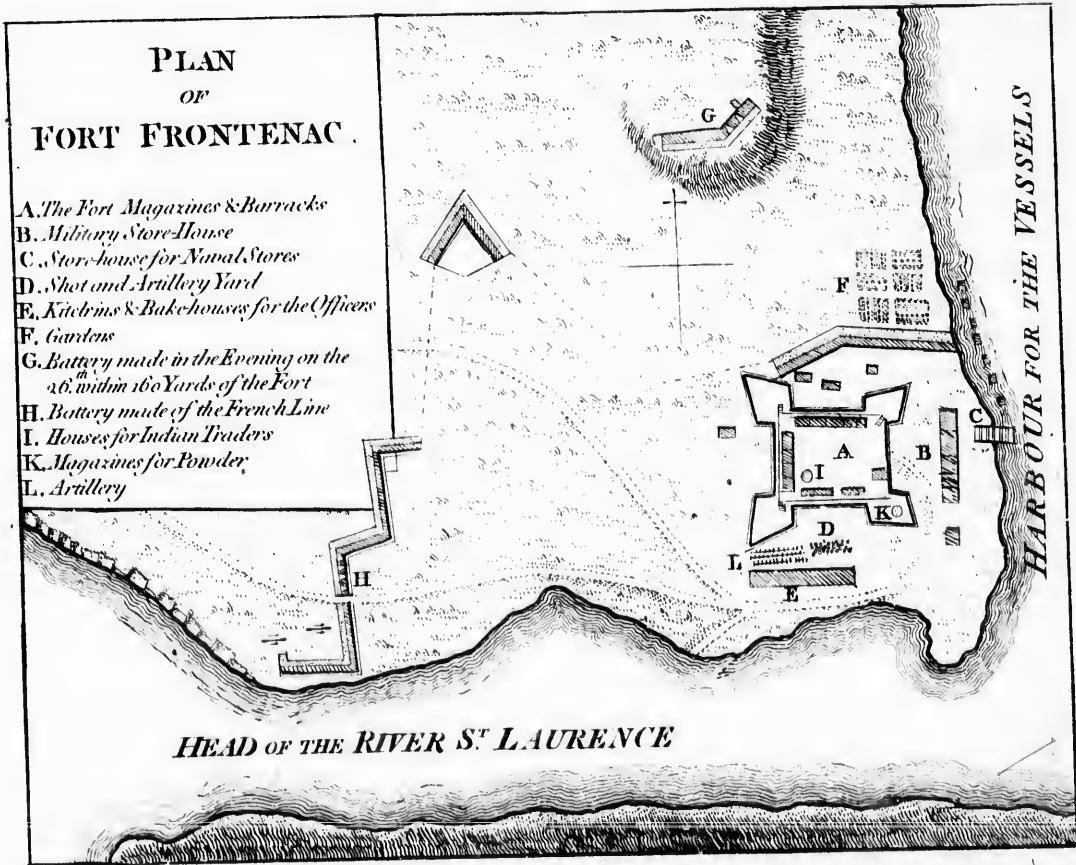


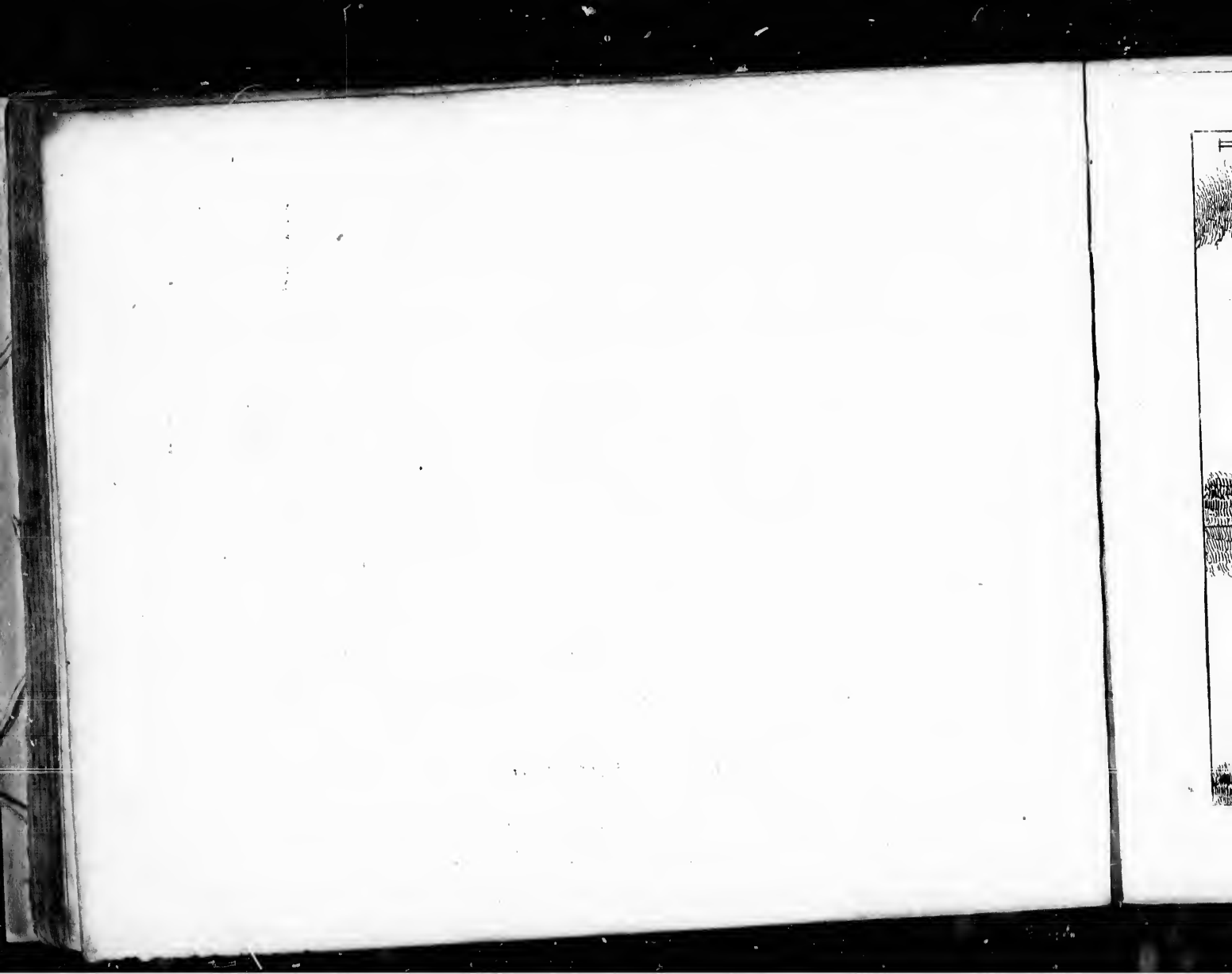


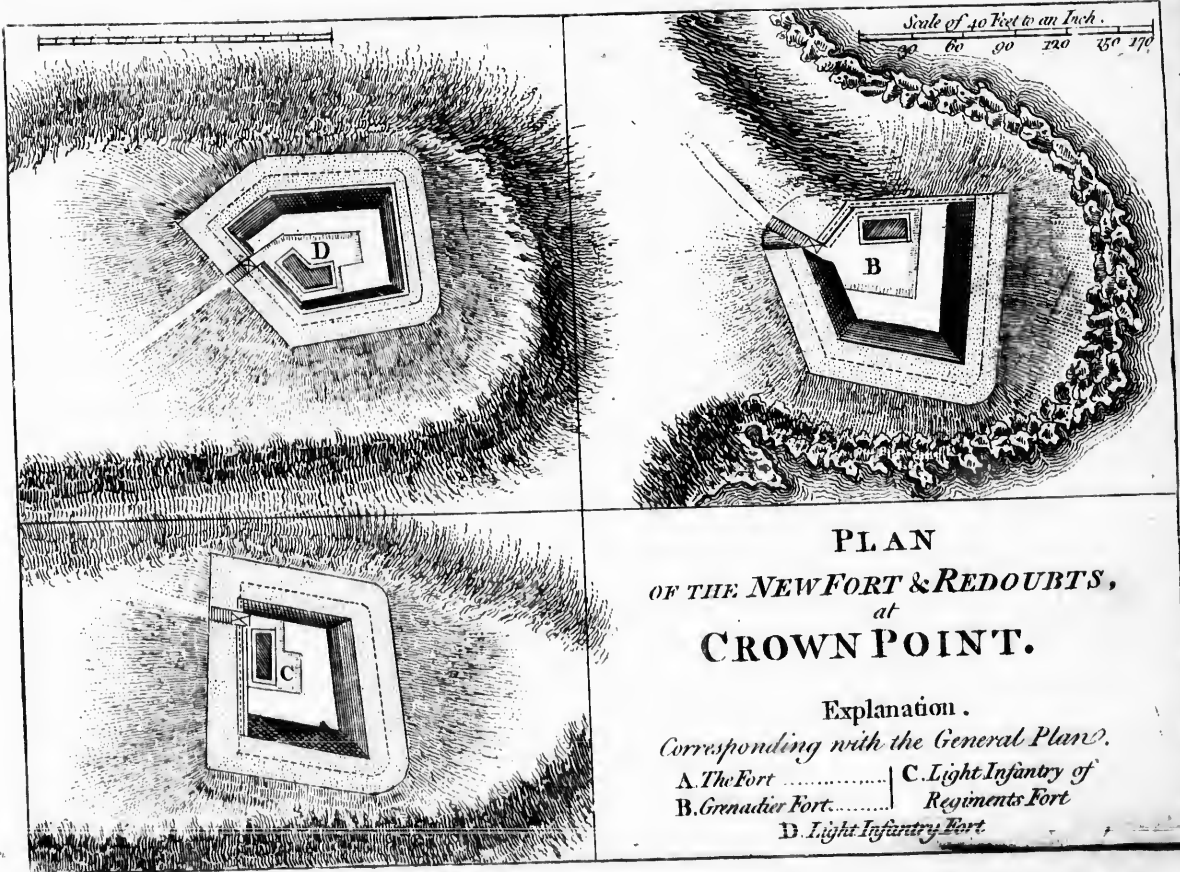


PLAN  
OF  
FORT FRONTENAC.

- A. The Fort Magazines & Barracks  
 B. Military Store-House  
 C. Store-house for Naval Stores  
 D. Shot and Artillery Yard  
 E. Kitchens & Bake-houses for the Officers  
 F. Gardens  
 G. Battery made in the Evening on the  
 26<sup>th</sup> width 160 Yards of the Fort  
 H. Battery made of the French Line  
 I. Houses for Indian Traders  
 K. Magazines for Powder  
 L. Artillery







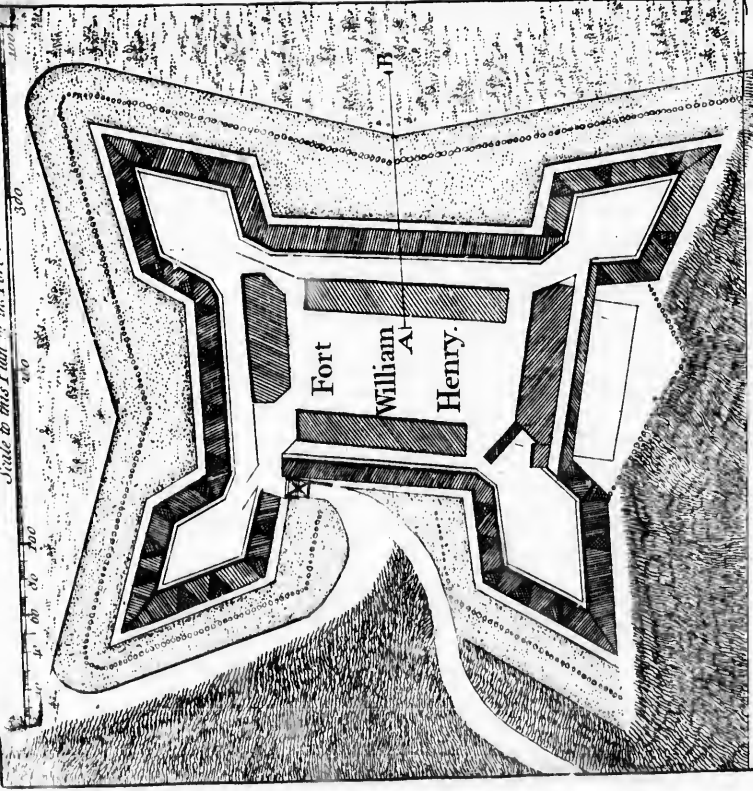
PLAN  
 OF THE NEW FORT & REDOUBTS,  
 at  
 CROWN POINT.

Explanation.  
 Corresponding with the General Plan.

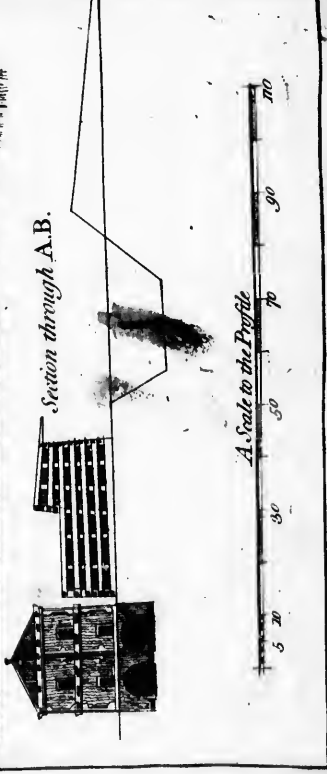
A. The Fort .....	C. Light Infantry of
B. Grenadier Fort .....	Regiments Fort
	D. Light Infantry Fort



*Side to this Plan of the Fort.*



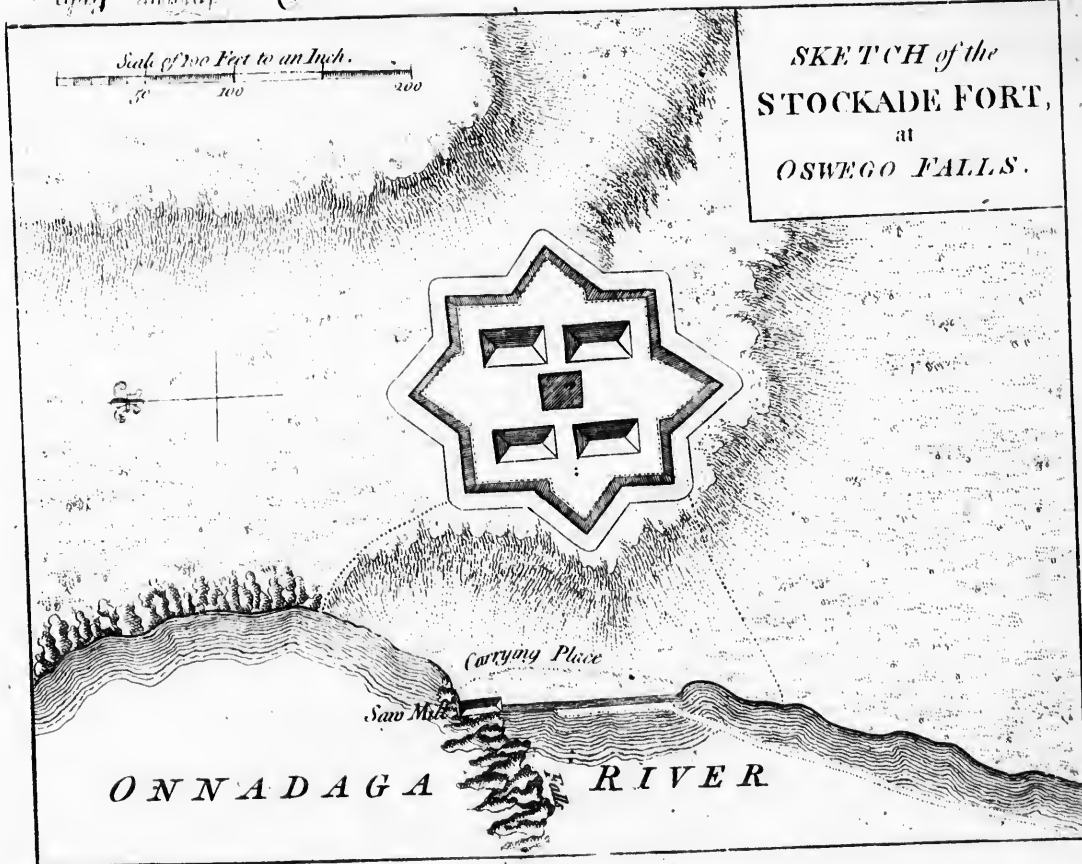
*Section through A.B.*







Wm. B. Smith del.

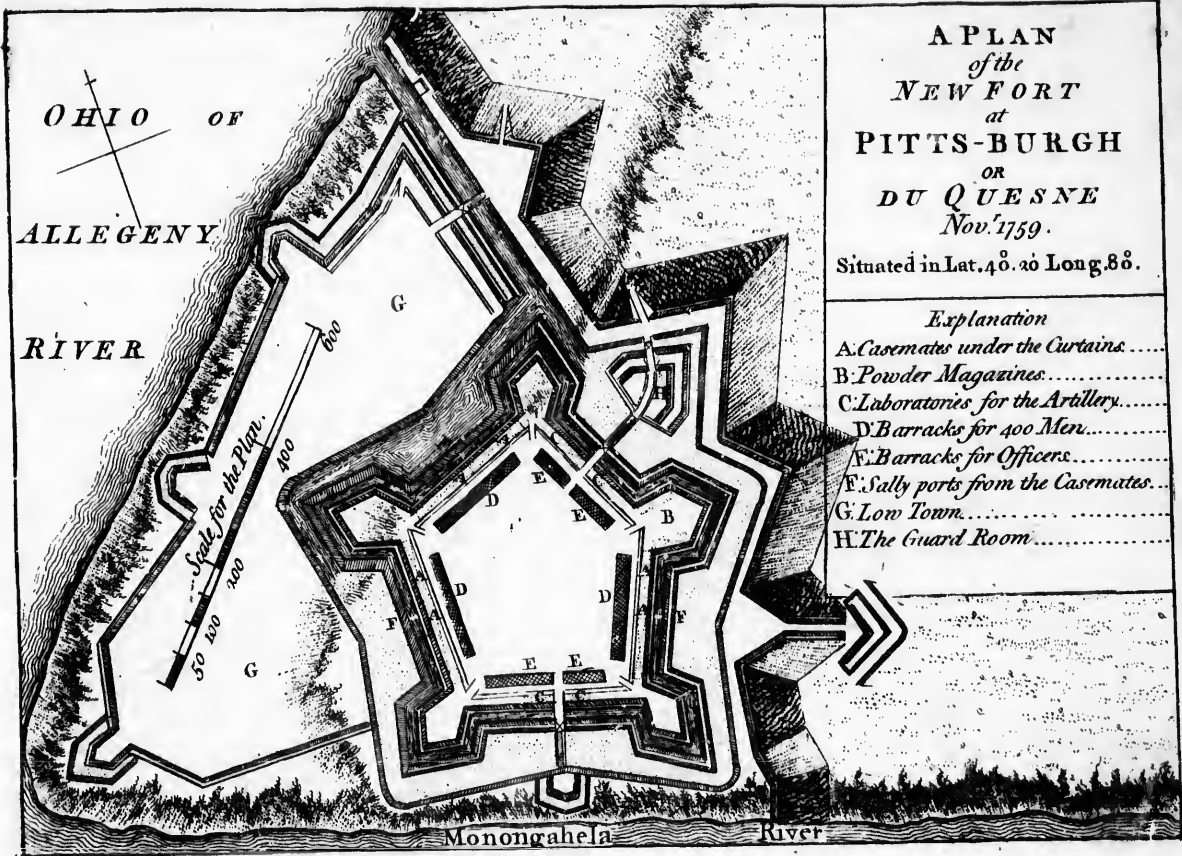


01

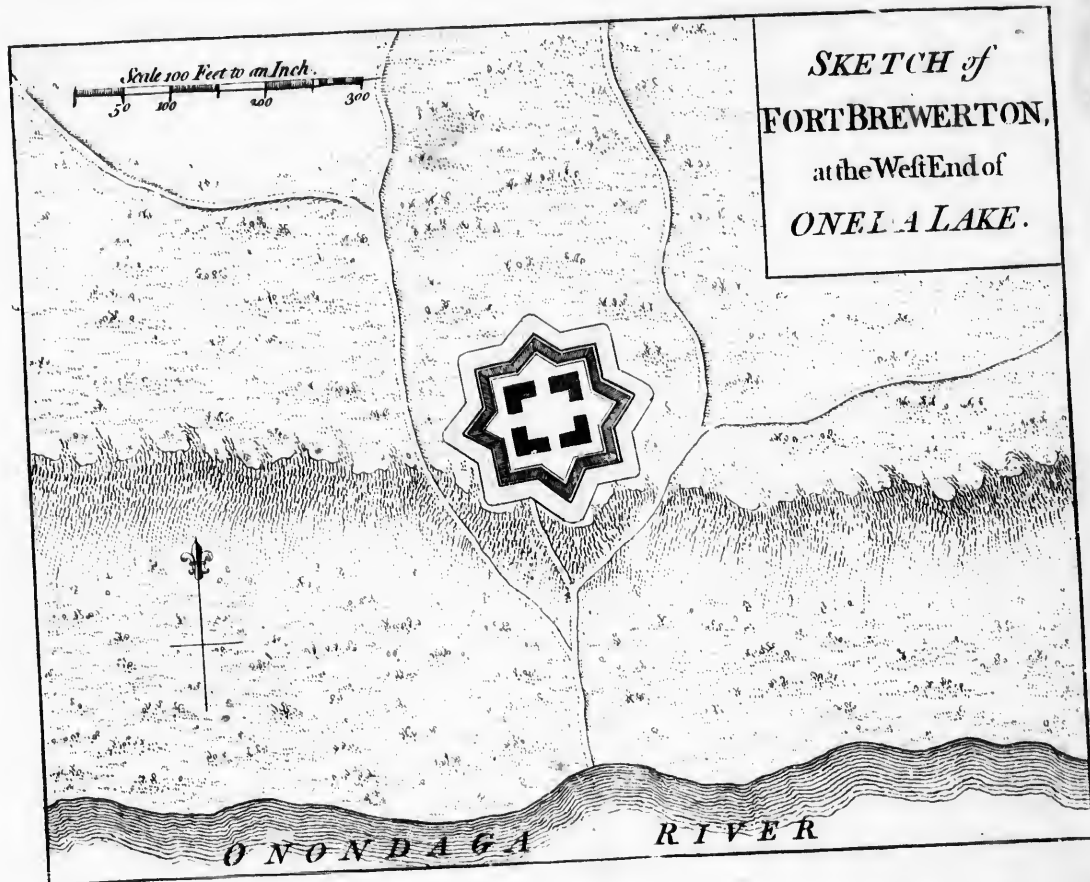
ALL

RI





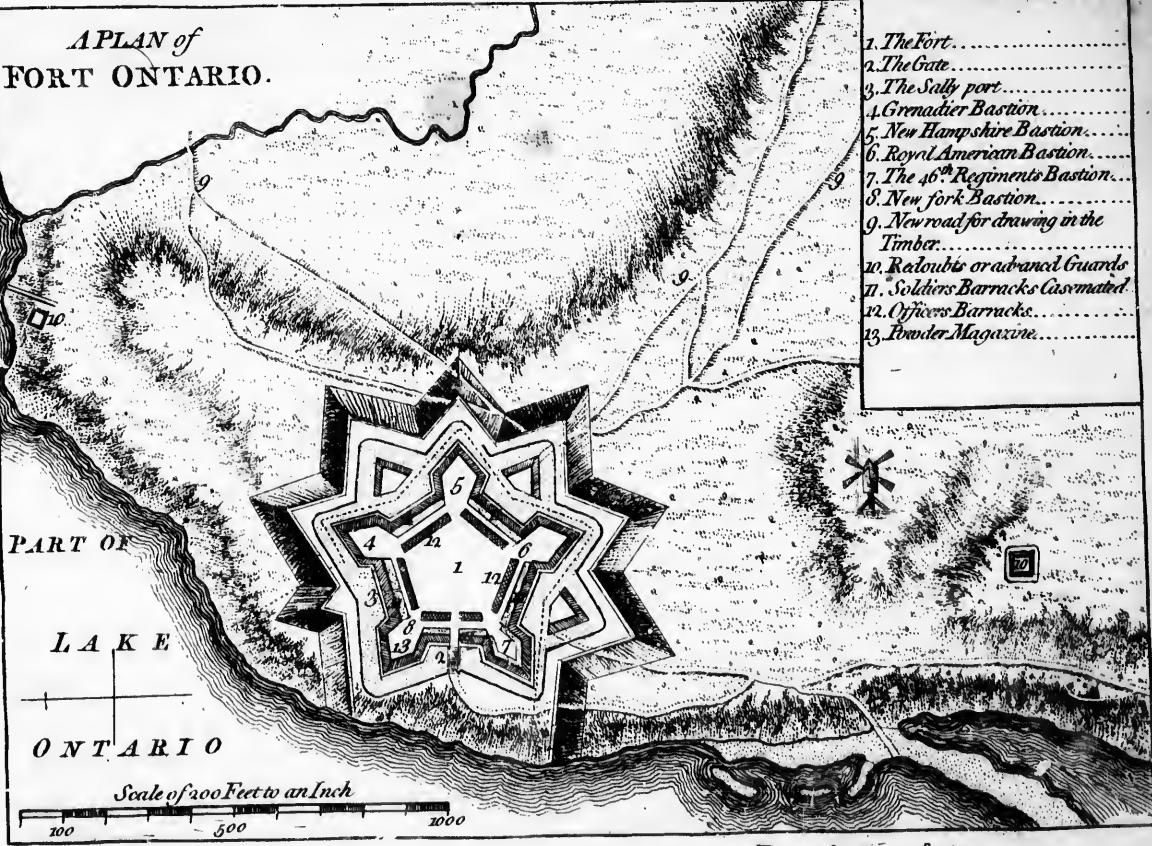






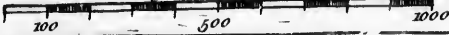
A PLAN of  
FORT ONTARIO.

- 1. The Fort.....
- 2. The Gate.....
- 3. The Sally port.....
- 4. Grenadier Bastion.....
- 5. New Hampshire Bastion.....
- 6. Royal American Bastion.....
- 7. The 46<sup>th</sup> Regiments Bastion.....
- 8. New fork Bastion.....
- 9. New road for drawing in the  
Timber.....
- 10. Redoubts or advanced Guards
- 11. Soldiers Barracks Casemated
- 12. Officers Barracks.....
- 13. Powder Magazine.....



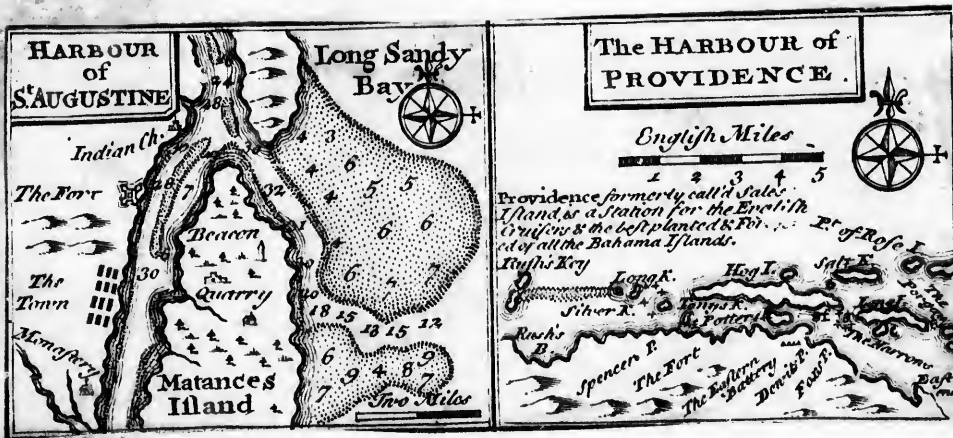
PART OF  
LAKE  
ONTARIO

Scale of 200 Feet to an Inch



P. Anderson Sculp





Mr. J. J. Smith

1899  
G. W. Smith

100



# A Draught of BOSTON HARBOUR.



