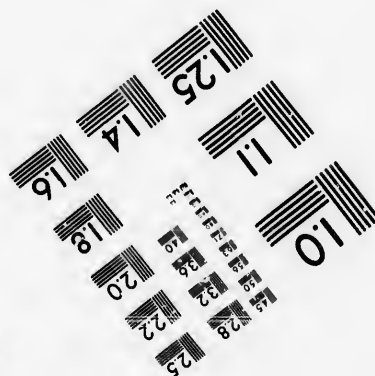
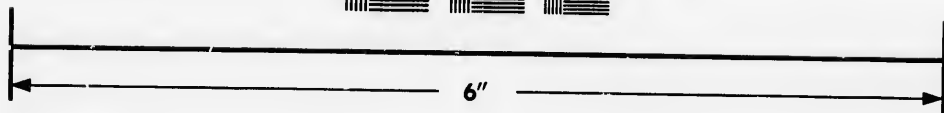
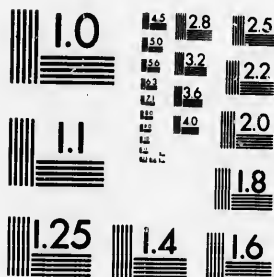


**IMAGE EVALUATION  
TEST TARGET (MT-3)**



**Photographic  
Sciences  
Corporation**

23 WEST MAIN STREET  
WEBSTER, N.Y. 14580  
(716) 872-4503

**CIHM/ICMH  
Microfiche  
Series.**

**CIHM/ICMH  
Collection de  
microfiches.**



Canadian Institute for Historical Microreproductions / Institut canadien de microreproductions historiques

**© 1986**

Technical and Bibliographic Notes/Notes techniques et bibliographiques

The Institute has attempted to obtain the best original copy available for filming. Features of this copy which may be bibliographically unique, which may alter any of the images in the reproduction, or which may significantly change the usual method of filming, are checked below.

L'Institut a microfilmé le meilleur exemplaire qu'il lui a été possible de se procurer. Les détails de cet exemplaire qui sont peut-être uniques du point de vue bibliographique, qui peuvent modifier une image reproduite, ou qui peuvent exiger une modification dans la méthode normale de filmage sont indiqués ci-dessous.

- |  |  |
|--|--|
| <input type="checkbox"/> Coloured covers/<br>Couverture de couleur   | <input checked="" type="checkbox"/> Coloured pages/<br>Pages de couleur  |
| <input type="checkbox"/> Covers damaged/<br>Couverture endommagée  | <input type="checkbox"/> Pages damaged/<br>Pages endommagées   |
| <input type="checkbox"/> Covers restored and/or laminated/<br>Couverture restaurée et/ou pelliculée  | <input type="checkbox"/> Pages restored and/or laminated/<br>Pages restaurées et/ou pelliculées  |
| <input type="checkbox"/> Cover title missing/<br>Le titre de couverture manqua   | <input checked="" type="checkbox"/> Pages discoloured, stained or foxed/<br>Pages décolorées, tachetées ou piquées   |
| <input type="checkbox"/> Coloured maps/<br>Cartes géographiques en couleur   | <input type="checkbox"/> Pages detached/<br>Pages détachées  |
| <input type="checkbox"/> Coloured ink (i.e. other than blue or black)/<br>Encre de couleur (i.e. autre que bleue ou noire)   | <input checked="" type="checkbox"/> Showthrough/<br>Transparence   |
| <input type="checkbox"/> Coloured plates and/or illustrations/<br>Planches et/ou illustrations en couleur  | <input type="checkbox"/> Quality of print varies/<br>Qualité inégale de l'impression   |
| <input type="checkbox"/> Bound with other material/<br>Relié avec d'autres documents   | <input type="checkbox"/> Includes supplementary material/<br>Comprend du matériel supplémentaire   |
| <input type="checkbox"/> Tight binding may cause shadows or distortion<br>along interior margin/<br>La reliure serrée peut causer de l'ombre ou de la<br>distorsion le long de la marge intérieure   | <input type="checkbox"/> Only edition available/<br>Seule édition disponible   |
| <input type="checkbox"/> Blank leaves added during restoration may<br>appear within the text. Whenever possible, these<br>have been omitted from filming/<br>Il se peut que certaines pages blanches ajoutées<br>lors d'une restauration apparaissent dans le texte,<br>mais, lorsque cela était possible, ces pages n'ont<br>pas été filmées. | <input type="checkbox"/> Pages wholly or partially obscured by errata<br>slips, tissues, etc., have been refilmed to<br>ensure the best possible image/<br>Les pages totalement ou partiellement<br>obscurcies par un feuillet d'errata, une pelure,<br>etc., ont été filmées à nouveau de façon à<br>obtenir la meilleure image possible. |
| <input checked="" type="checkbox"/> Additional comments:/ [Printed ephemera] 1 sheet (verso blank)<br>Commentaires supplémentaires:  |  |

This item is filmed at the reduction ratio checked below/  
Ce document est filmé au taux de réduction indiqué ci-dessous.

10X	12X	14X	16X	18X	20X	22X	24X	26X	28X	30X	32X
								✓			

ire  
détails  
es du  
modifier  
er une  
filmage

The copy filmed here has been reproduced thanks to the generosity of:

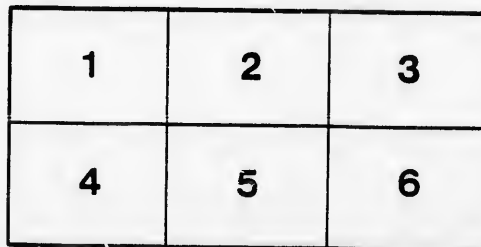
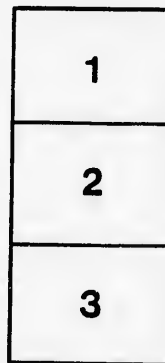
D. B. Weldon Library  
University of Western Ontario  
(Regional History Room)

The Images appearing here are the best quality possible considering the condition and legibility of the original copy and in keeping with the filming contract specifications.

Original copies in printed paper covers are filmed beginning with the front cover and ending on the last page with a printed or illustrated impression, or the back cover when appropriate. All other original copies are filmed beginning on the first page with a printed or illustrated impression, and ending on the last page with a printed or illustrated impression.

The last recorded frame on each microfiche shall contain the symbol  $\rightarrow$  (meaning "CONTINUED"), or the symbol  $\nabla$  (meaning "END"), whichever applies.

Maps, plates, charts, etc., may be filmed at different reduction ratios. Those too large to be entirely included in one exposure are filmed beginning in the upper left hand corner, left to right and top to bottom, as many frames as required. The following diagrams illustrate the method:



errata  
tu

pelure,  
on à



32X

L'exemplaire filmé fut reproduit grâce à la générosité de:

D. B. Weldon Library  
University of Western Ontario  
(Regional History Room)

Les Images suivantes ont été reproduites avec le plus grand soin, compte tenu de la condition et de la netteté de l'exemplaire filmé, et en conformité avec les conditions du contrat de filmage.

Les exemplaires originaux dont la couverture en papier est imprimée sont filmés en commençant par le premier plat et en terminant soit par la dernière page qui comporte une empreinte d'impression ou d'illustration, soit par le second plat, selon le cas. Tous les autres exemplaires originaux sont filmés en commençant par la première page qui comporte une empreinte d'impression ou d'illustration et en terminant par la dernière page qui comporte une telle empreinte.

Un des symboles suivants apparaîtra sur la dernière image de chaque microfiche, selon le cas: le symbole  $\rightarrow$  signifie "A SUIVRE", la symbole  $\nabla$  signifie "FIN".

Les cartes, planches, tableaux, etc., peuvent être filmés à des taux de réduction différents. Lorsque le document est trop grand pour être reproduit en un seul cliché, il est filmé à partir de l'angle supérieur gauche, de gauche à droite, et de haut en bas, en prenant le nombre d'images nécessaire. Les diagrammes suivants illustrent la méthode.

# GRAND OPERA HOUSE



MONDAY EVG., NOV. 14TH,  
-AND-  
TUESDAY, NOV. 15TH, MATINEE &  
EVENING.



Initial Production of the Successful  
English Military Play

THE

## Victorian Cross

In Five Acts. By J. W. Whitbread. Six years  
constant tour (and now running)  
in England.

PRODUCED UNDER THE DIRECTION OF MARTIN J. DIXON.

### CAST OF CHARACTERS.

Jack Raynton, half brother of Sir Richard ..... Leander Blanden  
Sir Richard Auhrey, captain of the Foot ..... F. H. Clarence  
Colonel, afterward General, Maynard ..... Frank Bosworth  
Mr. Graham, a lawyer ..... J. F. Sturgis  
Andy Cregan, a bit of true grit ..... Leonard Mitchell  
Nana Sahih, the notorious Mahratta chief ..... Jos. Fitzpatrick  
Pandeem, a Sepoy mutineer in Nana's pay ..... H. F. Parker  
Azimullah, Nana's officer ..... Frank Hilton  
Tom Walters, a purveyor of lacteal fluid ..... Franklin Collins  
Rusticamp, a faithful Sepoy ..... Chas. Smith  
General Sir Hugh Wheeler, commanding the forces at  
Cawnpore ..... A. W. H. Guernsey  
General Havelock ..... Jos. Turnour  
Corporal Johnson ..... Frank Jones  
Sentry ..... F. S. Durand  
Kate Maynard, daughter of Gen'l Maynard ..... Estelle Sprague  
Mrs. Raynton, mother of Jack ..... Ruth Loffel  
Phyllis Weathersby, servant ..... Monica Lee  
Lady Aubrey, mother of Sir Richard ..... Aida Rivers

### SYNOPSIS.

ACT I—The home coming—A mother's resolve—The two  
brothers—Disillusioned—Discharged—Mother and son.

ACT II—Scene 1—The gardens of Auhrey Manor—Sir  
Richard shows the cloven foot The lovers—Jack accepted—  
Lady Auhrey's disgust—The Colonel's consent. Scene 2—  
The woods of Auhrey Manor—Andy makes love, and for his  
pains gets turned out of his situation—The Colonel on the  
warpath. Scene 3—The library of Aubrey Manor—The will—  
A vicious display of malice—A terrible accusation—Jack,  
brother to Sir Richard—The har sinister—A son's love—Jack  
defends his mother—The Colonel speaks his mind—Jack  
enlists for a soldier—Off to the war.

ACT III—Scene 1—The entrenchment at Cawnpore—A  
starved garrison—Maddened with thirst—Jack a Sergeant-  
Major—Nana Sahih's spy—The conspiracy—The plot to murder  
Jack—Arrest of the spy—To be shot—The escape—Brother  
against brother—Sir Richard strikes Jack—Promotion—Jack  
an officer—Death of Sir Richard's mother—Mrs. Raynton  
speaks at last and proclaims herself to be Lady and Jack Sir  
John Auhrey. Scene 2—Nana Sahih's house, Cawnpore—  
Three scoundrels—Nana Sahih's treachery—The English  
doomed—The evacuation of the entrenchment—The march to  
the river. Scene 3—The Chant at Cawnpore—The embarka-  
tion—Lured to destruction The signal.

ACT IV—Scene 1—The temple—Sanctuary. Scene 2—  
Nana Sahih's house, Cawnpore—Kate in the toils of the  
serpent—A brave woman's defiance—Jack a prisoner—To be  
tortured—The traitor—Jack to be put on the rack—Death  
before dishonor—Guns heard in the distance—Nana Sahih's  
race—A demonical order—The massacre at Cawnpore.

ACT V—Library at Aubrey Manor—A game of bluff—  
Foiled—Jack claims his own and receives the Victorian  
Cross.

### EXECUTIVE STAFF.

Ettinger & Dixon ..... Managers  
Homer B. Day ..... Business Manager  
Frank Bosworth ..... Stage Manager  
W. H. Guernsey ..... Machinist  
Charles Smith ..... Properties

The Famous Bell Orchestral Piano  
IS USED EXCLUSIVELY IN THIS THEATRE.

