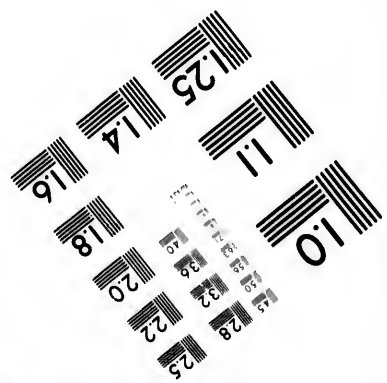
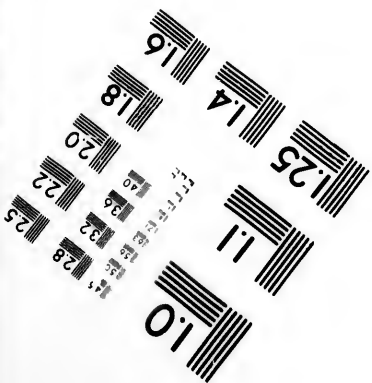
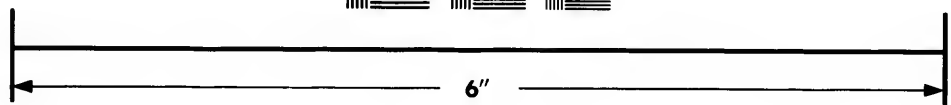
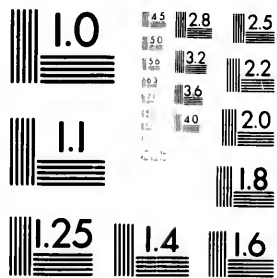


**IMAGE EVALUATION
TEST TARGET (MT-3)**



**Photographic
Sciences
Corporation**

23 WEST MAIN STREET
WEBSTER, N.Y. 14580
(716) 872-4503

4.5 2.8 2.5
3.2 2.2
2.0

**CIHM/ICMH
Microfiche
Series.**

**CIHM/ICMH
Collection de
microfiches.**

0:1



Canadian Institute for Historical Microreproductions

Institut canadien de microreproductions historiques

1980

Technical and Bibliographic Notes/Notes techniques et bibliographiques

The Institute has attempted to obtain the best original copy available for filming. Features of this copy which may be bibliographically unique, which may alter any of the images in the reproduction, or which may significantly change the usual method of filming, are checked below.

L'Institut a microfilmé le meilleur exemplaire qu'il lui a été possible de se procurer. Les détails de cet exemplaire qui sont peut-être uniques du point de vue bibliographique, qui peuvent modifier une image reproduite, ou qui peuvent exiger une modification dans la méthode normale de filmage sont indiqués ci-dessous.

- | | |
|--|--|
| <input type="checkbox"/> Coloured covers/
Couverture de couleur | <input type="checkbox"/> Coloured pages/
Pages de couleur |
| <input type="checkbox"/> Covers damaged/
Couverture endommagée | <input type="checkbox"/> Pages damaged/
Pages endommagées |
| <input type="checkbox"/> Covers restored and/or laminated/
Couverture restaurée et/ou pelliculée | <input type="checkbox"/> Pages restored and/or laminated/
Pages restaurées et/ou pelliculées |
| <input type="checkbox"/> Cover title missing/
Le titre de couverture manque | <input type="checkbox"/> Pages discoloured, stained or foxed/
Pages décolorées, tachetées ou piquées |
| <input checked="" type="checkbox"/> Coloured maps/
Cartes géographiques en couleur | <input checked="" type="checkbox"/> Pages detached/
Pages détachées |
| <input type="checkbox"/> Coloured ink (i.e. other than blue or black)/
Encre de couleur (i.e. autre que bleue ou noire) | <input checked="" type="checkbox"/> Showthrough/
Transparence |
| <input type="checkbox"/> Coloured plates and/or illustrations/
Planches et/ou illustrations en couleur | <input type="checkbox"/> Quality of print varies/
Qualité inégale de l'impression |
| <input checked="" type="checkbox"/> Bound with other material/
Relié avec d'autres documents | <input type="checkbox"/> Includes supplementary material/
Comprend du matériel supplémentaire |
| <input type="checkbox"/> Tight binding may cause shadows or distortion
along interior margin/
La reliure serrée peut causer de l'ombre ou de la
distortion le long de la marge intérieure | <input type="checkbox"/> Only edition available/
Seule édition disponible |
| <input type="checkbox"/> Blank leaves added during restoration may
appear within the text. Whenever possible, these
have been omitted from filming/
Il se peut que certaines pages blanches ajoutées
lors d'une restauration apparaissent dans le texte,
mais, lorsque cela était possible, ces pages n'ont
pas été filmées. | <input type="checkbox"/> Pages wholly or partially obscured by errata
slips, tissues, etc., have been refilmed to
ensure the best possible image/
Les pages totalement ou partiellement
obscurcies par un feuillet d'errata, une pelure,
etc., ont été filmées à nouveau de façon à
obtenir la meilleure image possible. |
| <input type="checkbox"/> Additional comments:
Commentaires supplémentaires: | |

This item is filmed at the reduction ratio checked below/
Ce document est filmé au taux de réduction indiqué ci-dessous.

10X	12X	14X	16X	18X	20X	22X	24X	26X	28X	30X	32X
									✓		

The copy filmed here has been reproduced thanks to the generosity of:

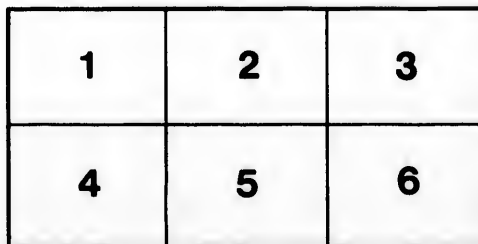
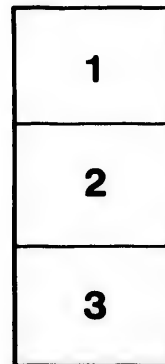
Library of the Public
Archives of Canada

The images appearing here are the best quality possible considering the condition and legibility of the original copy and in keeping with the filming contract specifications.

Original copies in printed paper covers are filmed beginning with the front cover and ending on the last page with a printed or illustrated impression, or the back cover when appropriate. All other original copies are filmed beginning on the first page with a printed or illustrated impression, and ending on the last page with a printed or illustrated impression.

The last recorded frame on each microfiche shall contain the symbol \rightarrow (meaning "CONTINUED"), or the symbol ∇ (meaning "END"), whichever applies.

Maps, plates, charts, etc., may be filmed at different reduction ratios. Those too large to be entirely included in one exposure are filmed beginning in the upper left hand corner, left to right and top to bottom, as many frames as required. The following diagrams illustrate the method:



L'exemplaire filmé fut reproduit grâce à la générosité de:

La bibliothèque des Archives
publiques du Canada

Les images suivantes ont été reproduites avec le plus grand soin, compte tenu de la condition et de la netteté de l'exemplaire filmé, et en conformité avec les conditions du contrat de filmage.

Les exemplaires originaux dont la couverture en papier est imprimée sont filmés en commençant par le premier plat et en terminant soit par la dernière page qui comporte une empreinte d'impression ou d'illustration, soit par le second plat, selon le cas. Tous les autres exemplaires originaux sont filmés en commençant par la première page qui comporte une empreinte d'impression ou d'illustration et en terminant par la dernière page qui comporte une telle empreinte.

Un des symboles suivants apparaîtra sur la dernière image de chaque microfiche, selon le cas: le symbole \rightarrow signifie "A SUIVRE", le symbole ∇ signifie "FIN".

Les cartes, planches, tableaux, etc., peuvent être filmés à des taux de réduction différents. Lorsque le document est trop grand pour être reproduit en un seul cliché, il est filmé à partir de l'angle supérieur gauche, de gauche à droite, et de haut en bas, en prenant le nombre d'images nécessaire. Les diagrammes suivants illustrent la méthode.

(Advertisement.)

THE PACIFIC CABLE.

The Government of Canada invites cable manufacturing contractors and others to state the terms upon which they will be prepared to lay, and maintain in efficient condition, a submarine electric cable across the Pacific from Canada to the Australasian Colonies.

General conditions under which the offers are to be made may be ascertained on application at the Department of Trade and Commerce, in Ottawa, or at the office of the High Commissioner for Canada in London.

Offers addressed to the undersigned will be received by him until November 1st, 1894.

MACKENZIE BOWELL,

Minister of Trade and Commerce.

OTTAWA, August 6th, 1894.

129+

(24)

B2425

GENERAL CONDITIONS.

1. At the Colonial Conference, held in Ottawa, between June 28th and July 8th (inclusive), a series of resolutions were passed relating to the Pacific Cable (copies appended). It was resolved among other things, that immediate steps should be taken to provide direct telegraphic communication between the Dominion of Canada and the Australasian Colonies. At the unanimous request of the Delegates present at the Conference, the duty of giving effect to the resolutions passed, and the views expressed, devolved upon the Canadian Government.

2. In order to obtain definite data to enable all the Governments concerned to consider and adopt the best means of carrying out the undertaking, the Canadian Government deems it expedient to invite proposals for establishing the cable, in three different forms, viz. :—

FORM A.—The Cable to be owned and controlled by Government ; to be worked under Government authority, and to be kept in repair by the Contractor for three years.

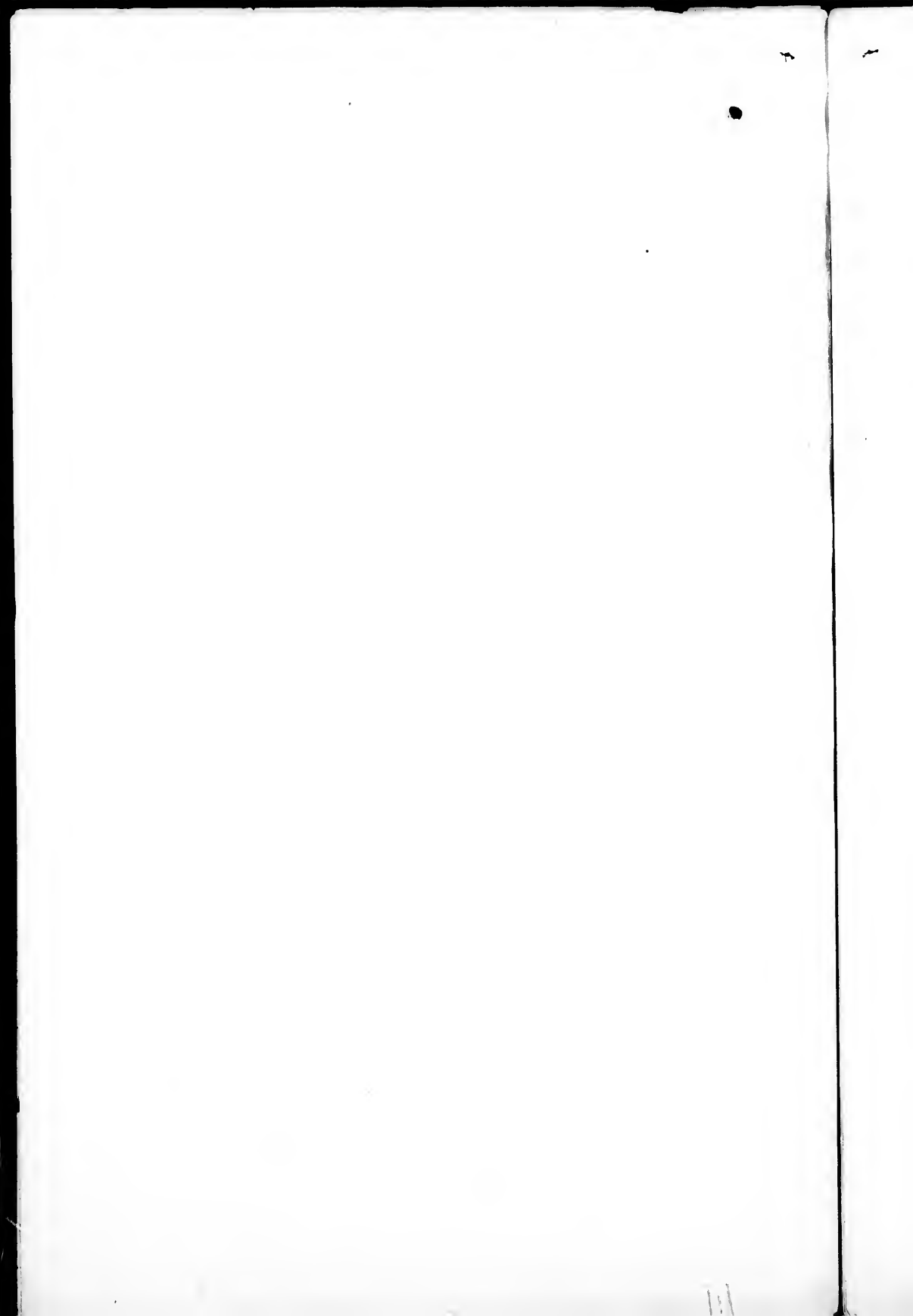
Cable manufacturing contractors to state the lowest cash price for which they will be prepared to supply and lay the cable, the terms and conditions upon which they will guarantee its permanency and the annual payment for which they will maintain it in efficient condition for three years after the whole line shall have been completed and put in operation.

FORM B.—The Cable to be owned, maintained and worked by a subsidized Company.

The contracting parties to find the capital, establish, work and maintain the cable in efficient condition, for a subsidy to be paid to them annually for a terms of years, by the contributing Governments. The offers to state the amount of subsidy to be paid yearly, and the number of years it is to be paid. The maximum rates to be charged on messages to and from Great Britain and the Australasian Colonies, shall be as follows :—Three shillings per word for ordinary telegrams ; two shillings per word for Government telegrams ; and one shilling and six pence for press telegrams. The charges on messages between Canada and the Colonies to be proportionate.

FORM C.—The Cable to be owned, maintained and worked by a Company, under a government guarantee.

The contracting parties to find the capital, establish, work and maintain the cable in efficient condition. The offers to state what guarantee of gross revenue will be required ; the difference between gross earnings and the amount guaranteed to be made good each year to the company by the contributing Governments. The rates to be charged for the transmission of messages to and from Great Britain and the Australasian Colonies shall be as follows : Three shillings per word for ordinary telegrams ; two shillings per word for Government telegrams ; and one shilling and sixpence per word for press messages. Trans-Pacific messages to be charged at proportionate rates. The tariff of charges to be approved and not changed unless by governmental sanction.



ROUTE OF CABLE.

Offers will be received for laying the cable on each of the routes described as follows :—

ROUTE No. 1.

Commencing at Vancouver Island the cable to extend to Fanning Island, thence to a suitable island in the Fiji Group. From Fiji to Norfolk Island, and at that point the route will bifurcate to the northern part of New Zealand, and to a convenient point near the boundary between New South Wales and Queensland.

	Knots.
Vancouver Island to Fanning Island.....	3,232
Fanning Island to Fiji.....	1,715
Fiji to Norfolk Island.....	1,022
Norfolk Island to New Zealand.....	415
Norfolk Island to Tweed Mouth, near boundary New South Wales and Queensland.....	761
Total.....	7,145

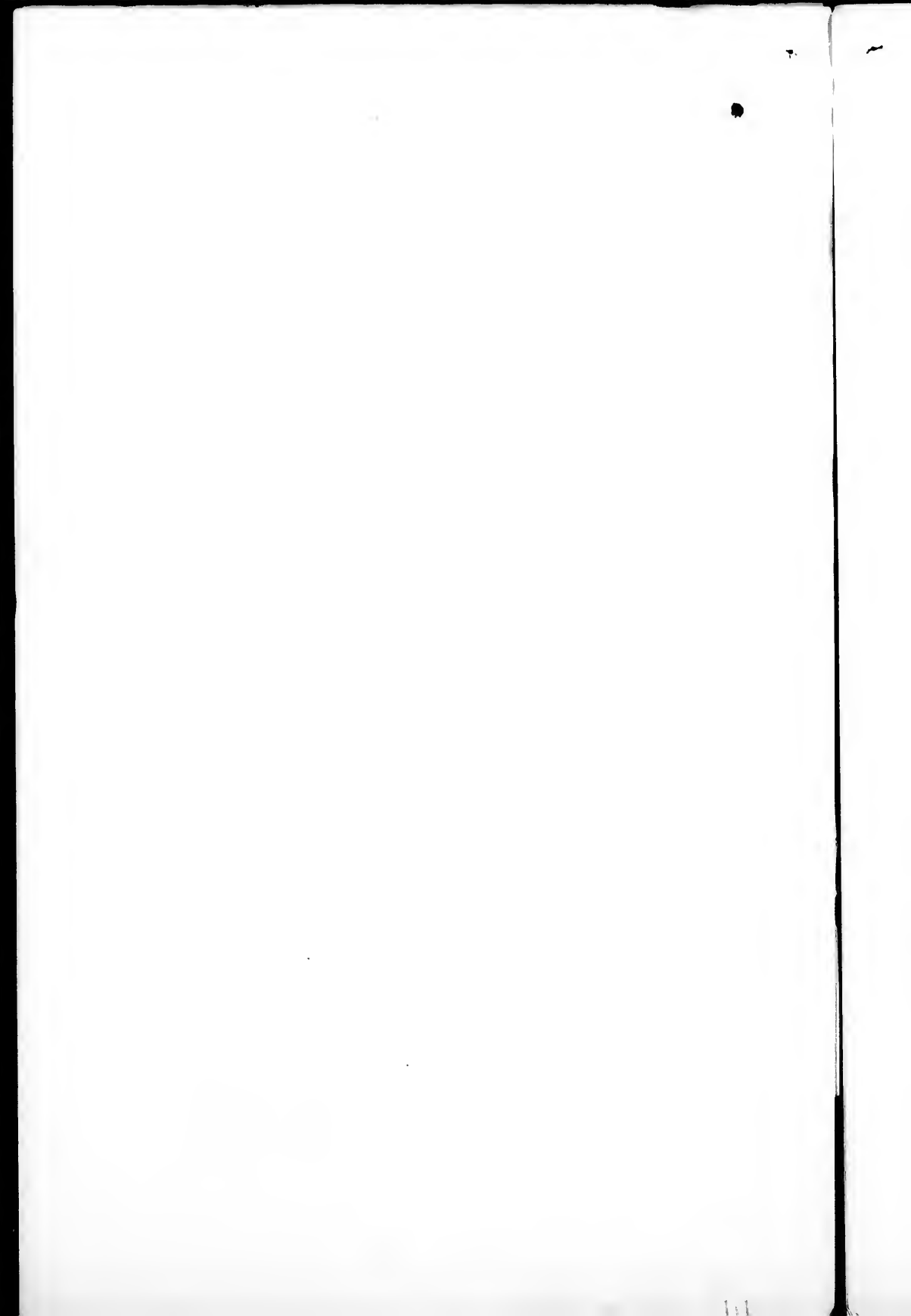
ROUTE No. 2.

From Vancouver Island the cable to be laid to a small unoccupied island indicated on the charts as Necker Island, situated about 240 miles westward from the most western island of the Hawaiian Group and about 400 nautical miles from Honolulu. From Necker Island the cable to extend to Fiji, and thence, as in route No. 1 to New Zealand and Australia. On the section between Necker and Fiji possibly Howland Island or Baker Island may be available for a mid-station but the exact position has not been ascertained.

	Knots.
Vancouver Island to Necker Island.....	2,431
Necker Island to Fiji.....	2,546
Fiji to Norfolk Island.....	1,022
Norfolk Island to New Zealand.....	415
Norfolk to Tweed Mouth.....	761
Total.....	7,175

ROUTE No. 3.

As in route No. 2 the cable to extend from Vancouver Island to Necker Island, thence to Onoatua or some one of the eastern islands of the Gilbert Group. From this station in the Gilbert Group two branches to extend, one to Queensland and the other to New Zealand. The Queensland branch



to touch at San Christoval Island in the Solomon Group, and terminate at Bowen, connecting at that point with the land lines, easterly to Brisbane and Sydney, westerly to the Gulf of Carpentaria.

	Knots.
Vancouver Island to Necker Island.....	2,431
Necker Island to Onoatua (in Gilbert Group).....	1,917
Onoatua to Fiji.....	980
Viti Levu to New Zealand	1,004
Onoatua to San Christoval (Solomon Group).....	953
San Christoval to Bowen, Queensland.....	980
Total.....	<u>8,265</u>

ROUTE No. 4.

As in routes Nos. 2 and 3 the cable to be laid from the northern terminal point to Necker Island. From Necker Island to extend in a direct course to Bowen, touching at Apamana, a central island in the Gilbert Group, and at San Christoval, of the Solomon Group.

	Knots.
Vancouver Island to Necker Island.....	2,431
Necker Island to Apamana (Gilbert Group)	1,865
Apamana to San Christoval (Solomon Group)....	970
San Christoval to Bowen, Queensland.....	980
Total.....	<u>6,246</u>

ROUTE No. 5.

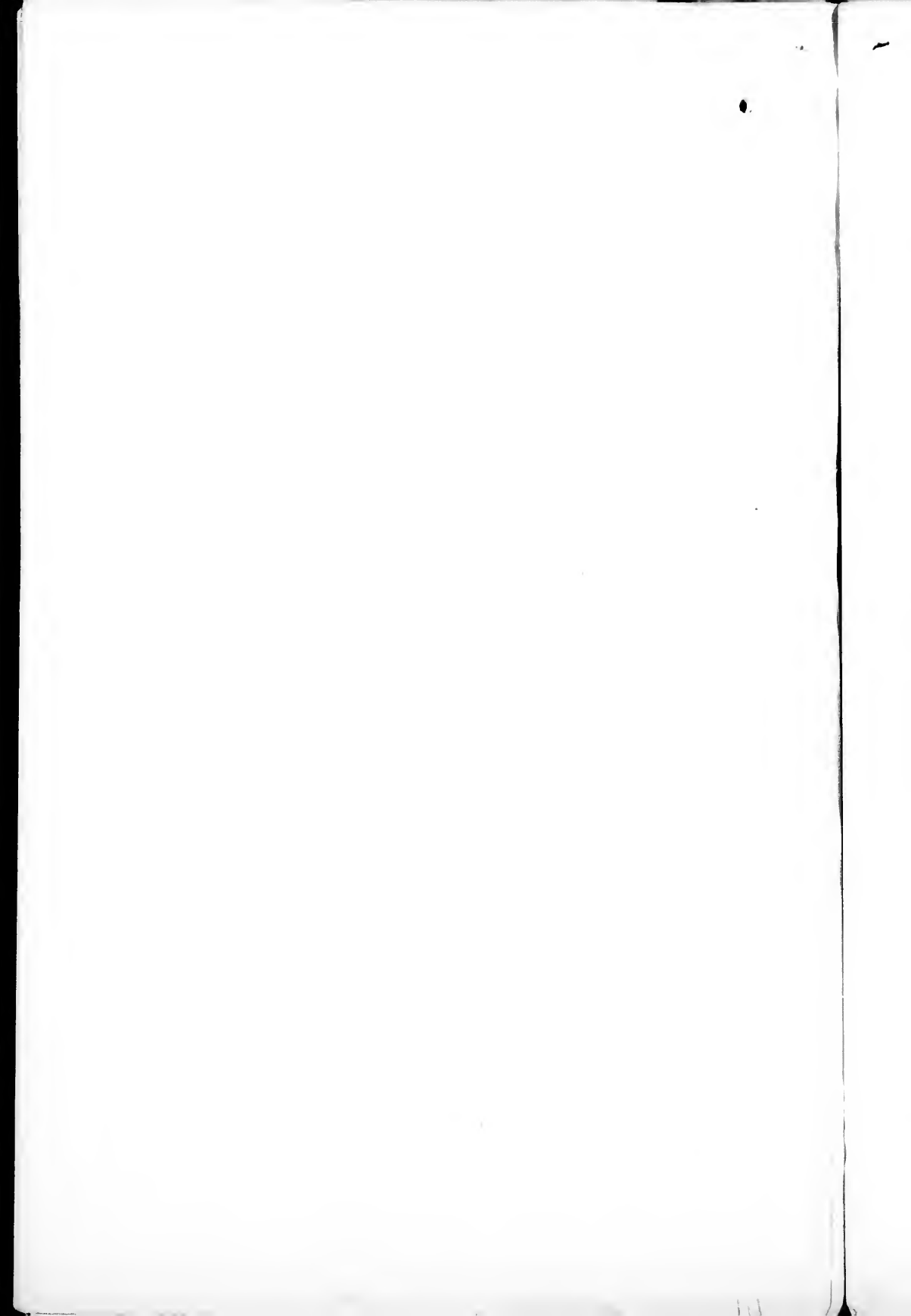
As in routes Nos. 2, 3 and 4, the cable to run from Vancouver Island to Necker Island; from Necker Island to Fiji, thence direct to New Zealand.

	Knots.
Vancouver Island to Necker Island.....	2,431
Necker Island to Fiji.....	2,546
Fiji to New Zealand.....	1,150
Total.....	<u>6,127</u>

ROUTE No. 6.

From Vancouver Island the cable to extend to Honolulu; from Honolulu to Fiji, and from Fiji to follow route No. 1 to New Zealand and Australia. On the section between Honolulu and Fiji one of the Phoenix Islands may possibly be found available for a mid-station.

	Knots.
Vancouver Island to Honolulu.....	2,280
Honolulu to Fiji.....	2,600
Fiji to Norfolk Island.....	1,022
Norfolk Island to New Zealand.....	415
Norfolk Island to Tweed Mouth.....	761
Total.....	<u>7,078</u>



ROUTE No. 7.

From Vancouver Island the cable to extend to Honolulu ; from Honolulu to Onotoa of the Gilbert Group ; from Onotoa to San Christoval of the Solomon Group ; from San Christoval to Bowen.

	Knots.
Vancouver Island to Honolulu.....	2,280
Honolulu to Onotoa.....	2,080
Onotoa to San Christoval.....	953
San Christoval to Bowen.....	98C
Total.....	<u>6,293</u>

ROUTE No. 8.

From Vancouver Island the cable to extend to Honolulu ; from Honolulu to Fiji, possibly with a mid-station on this section if a suitable island be available. From Fiji the cable to run direct to New Zealand.

	Knots.
Vancouver Island to Honolulu.....	2,280
Honolulu to Fiji.....	2,600
Fiji to New Zealand.....	1,150
Total.....	<u>6,080</u>

The northern terminus of each route is on Vancouver Island. The cable will land at some suitable point to be determined, probably at Port San Juan, near the entrance of the straits of San Juan, or at Barclay Sound.

The several routes above described are shown generally on the accompanying map of the world. The distances given in each case are believed to be approximately correct, but are not guaranteed. Parties offering to provide and lay the cable must make their own calculations of distances and satisfy themselves.

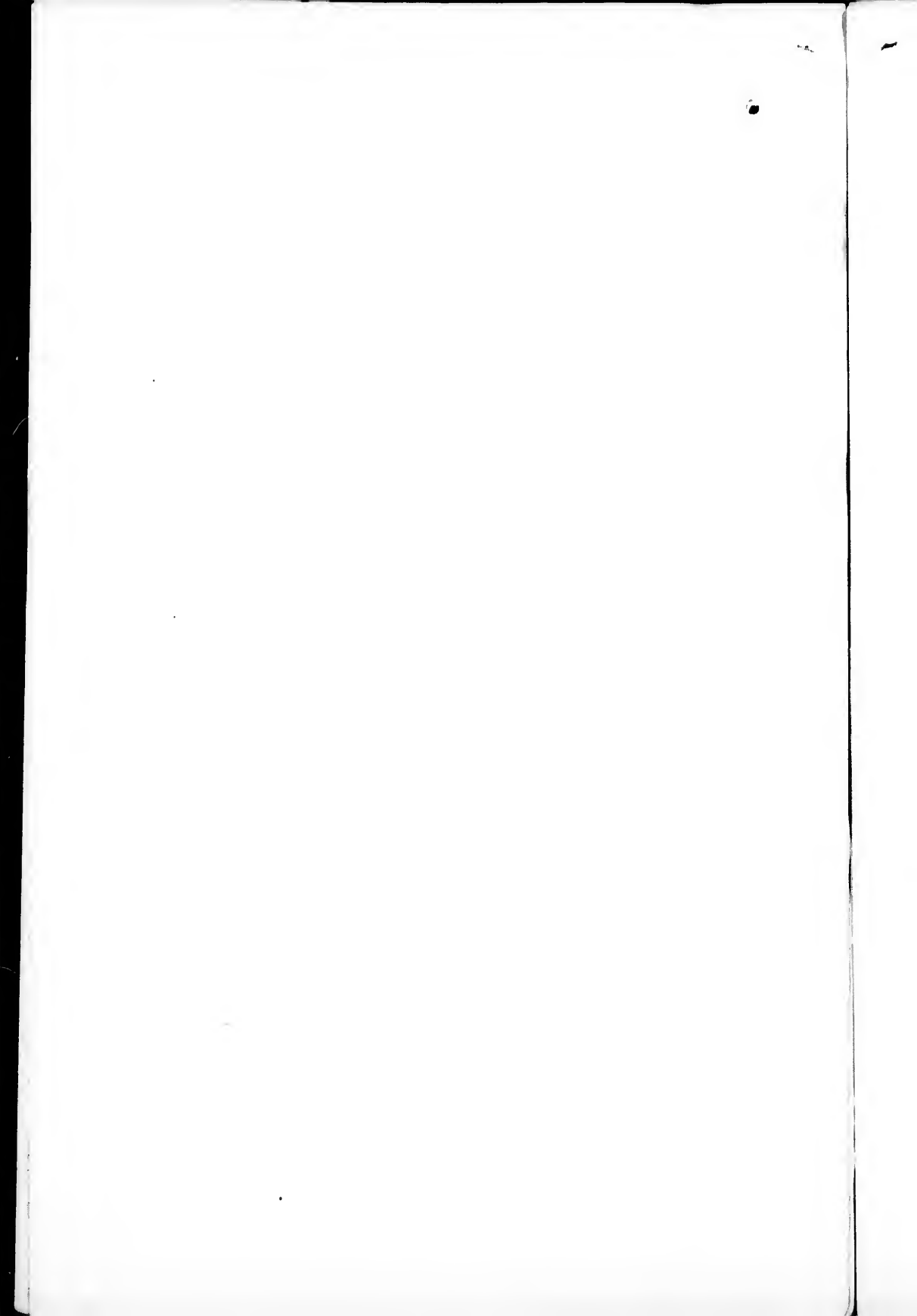
Character of Cables.—Proposals will describe the type of cables intended to be used on each section, and state the weight of conductors and insulators per knot in each case.

Shore Ends.—The best description of landing cables must be employed at terminal points and all mid-station. The proposals will describe the character, weight and length of shore-end cables to be used in each case.

Speeds.—The calculated speed for each section of the cable shall in no case be less than 12 words per minute.

Stations and Equipment.—Each offer will describe the character and approximate cost of buildings, instruments, &c., to be furnished for each terminal and mid-ocean station.

Repairs and Maintenance.—Proposals will state the provision intended to be made for repairs and maintenance, the number, tonnage and value of repair steamers. In the case of offers made under Form A, the steamers and stores will be found by, and remain the property of the contractor, until the end of three years from the completion of the cable, to be then taken over at a valuation as may be stipulated and agreed.



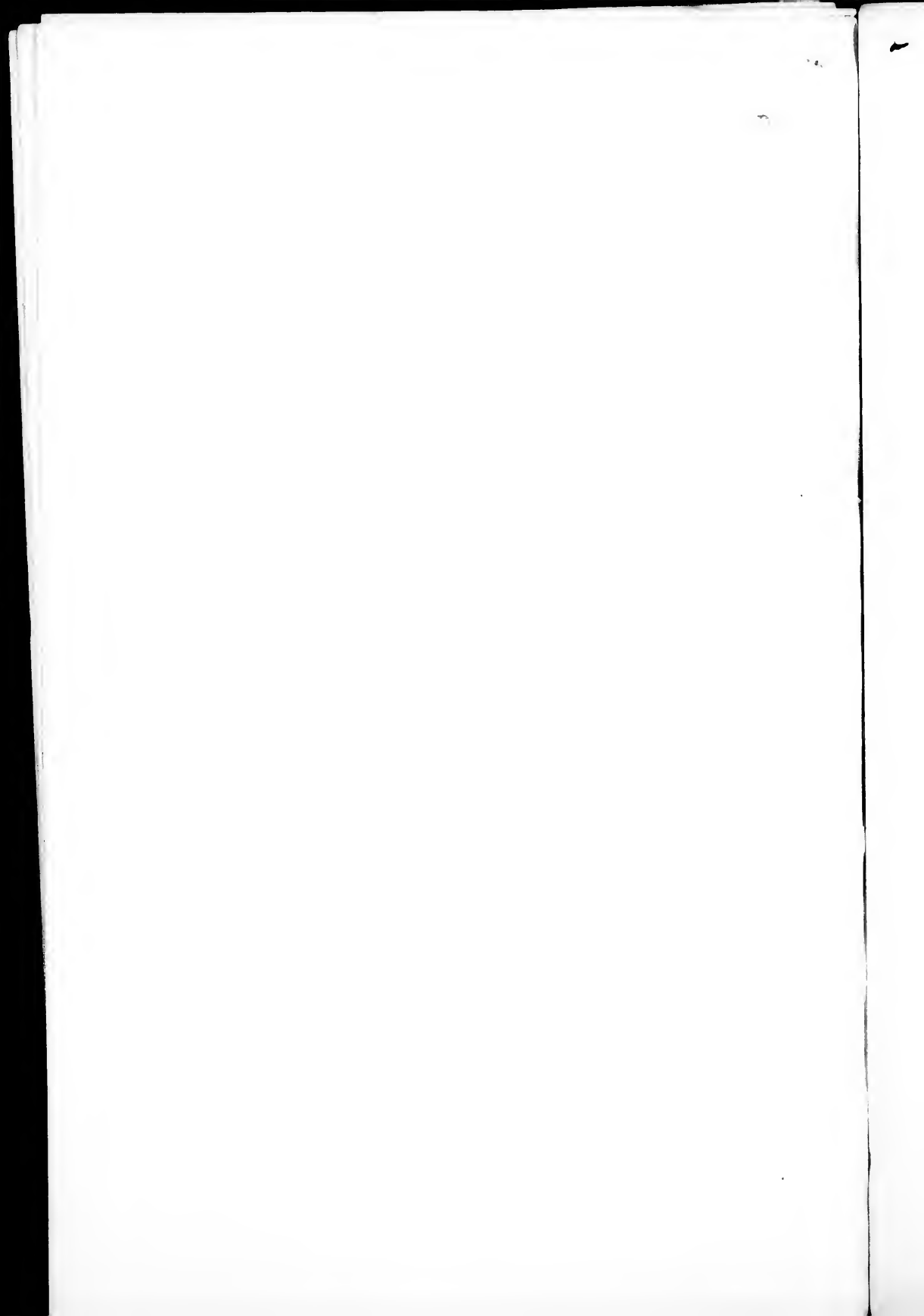
Surveys.—Charts may be seen at the Department of Trade and Commerce, Ottawa, and at the office of the High Commissioner for Canada in London, showing the soundings which have been made from time to time in the Pacific as far as recorded. It is expected that additional soundings will shortly be made, but parties making proposals must assume all risks and in the event of a contract being entered into, for establishing the cable, the contractors must themselves take means to find the most suitable points for landing the cable at all terminal and mid-ocean stations. It will be understood that in each instance, the landing privileges are to be secured by the contributing Governments.

Time of Completion.—The time limited for the completion of the cable is three years, from the date of the contract; but as it is desirable to have telegraphic communication established as soon as practicable, proposals may state a shorter period; or the same parties may make two offers, one on the basis of three years, the other on the shortest period within which the undertaking may be accomplished.

PROPOSALS.

Proposals based on the above general conditions, and in either of the three forms set forth, to be addressed to the Minister of Trade and Commerce, and delivered at his Department in Ottawa, on or before the first day of November, 1894.

DEPARTMENT OF TRADE AND COMMERCE,
OTTAWA, August 6th, 1894.



RESOLUTIONS

PASSED BY THE COLONIAL CONFERENCE, 1894, IN RESPECT TO
THE ESTABLISHMENT OF THE PACIFIC CABLE.

1. *Resolved*,—That in the opinion of this Conference immediate steps should be taken to provide telegraphic communication by cable, free from foreign control, between the Dominion of Canada and Australasia.

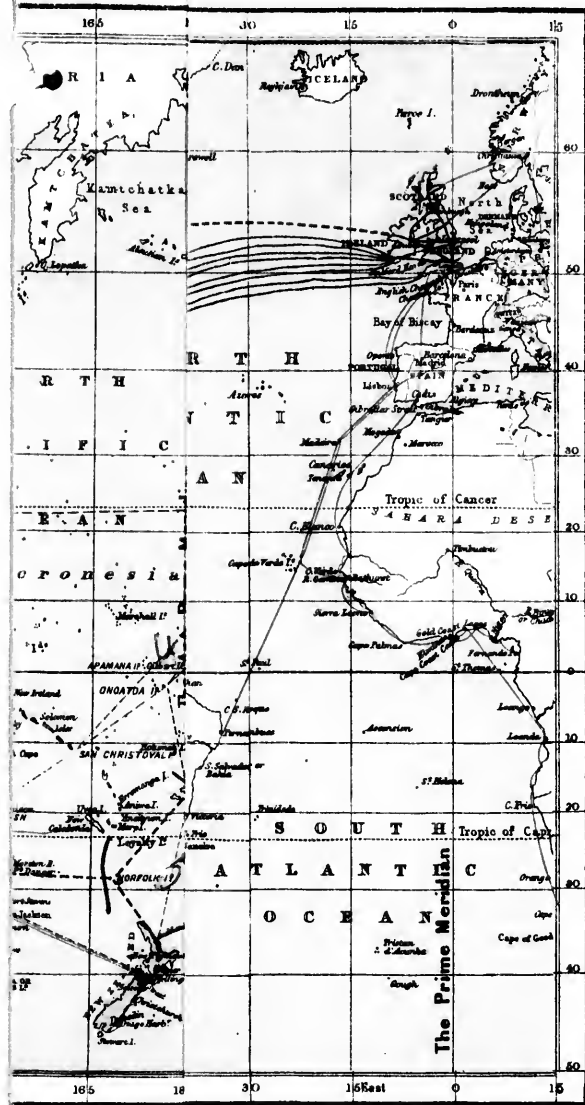
2. *Resolved*,—That the Imperial Government be respectfully requested to undertake at the earliest possible moment, and to prosecute with all possible speed, a thorough survey of the proposed cable route between Canada and Australia; the expense to be borne in equal proportions by Great Britain, Canada and Australian Colonies.

3. *Resolved*,—That it is for the interest of the Empire that, in case of the construction of a cable between Canada and Australasia, such cable should be extended from Australasia to the Cape of Good Hope, and for that purpose arrangements should be made between the Imperial and South African Governments for a survey of the latter route.

4. *Resolved*,—That in view of the desirability of having a choice of routes for a cable connection between Canada and Australasia, the Home Government be requested to take immediate steps to secure neutral landing ground on some one of the Hawaiian Islands, in order that the cable may remain permanently under British control.

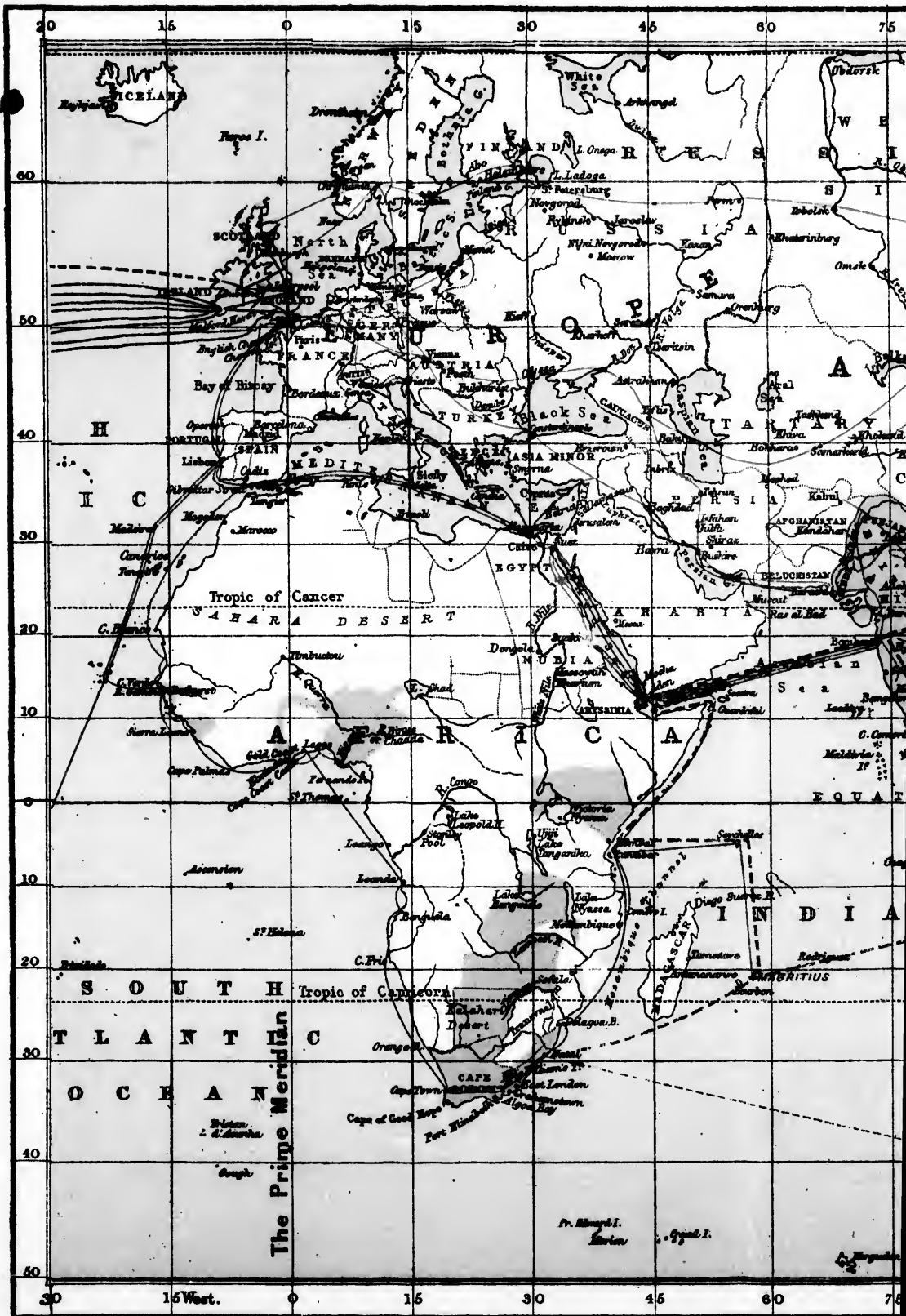
5. *Resolved*,—That the Canadian Government be requested, after the rising of this Conference, to make all necessary inquiries, and generally to take such steps as may be expedient in order to ascertain the cost of the proposed Pacific Cable, and promote the establishment of the undertaking in accordance with the views expressed in this Conference.

ON MERCAT



Map from England to the British Colonial Empire, circa 1800

Photolithographed by the National Atlas



THE WORLD ON MERCATORS

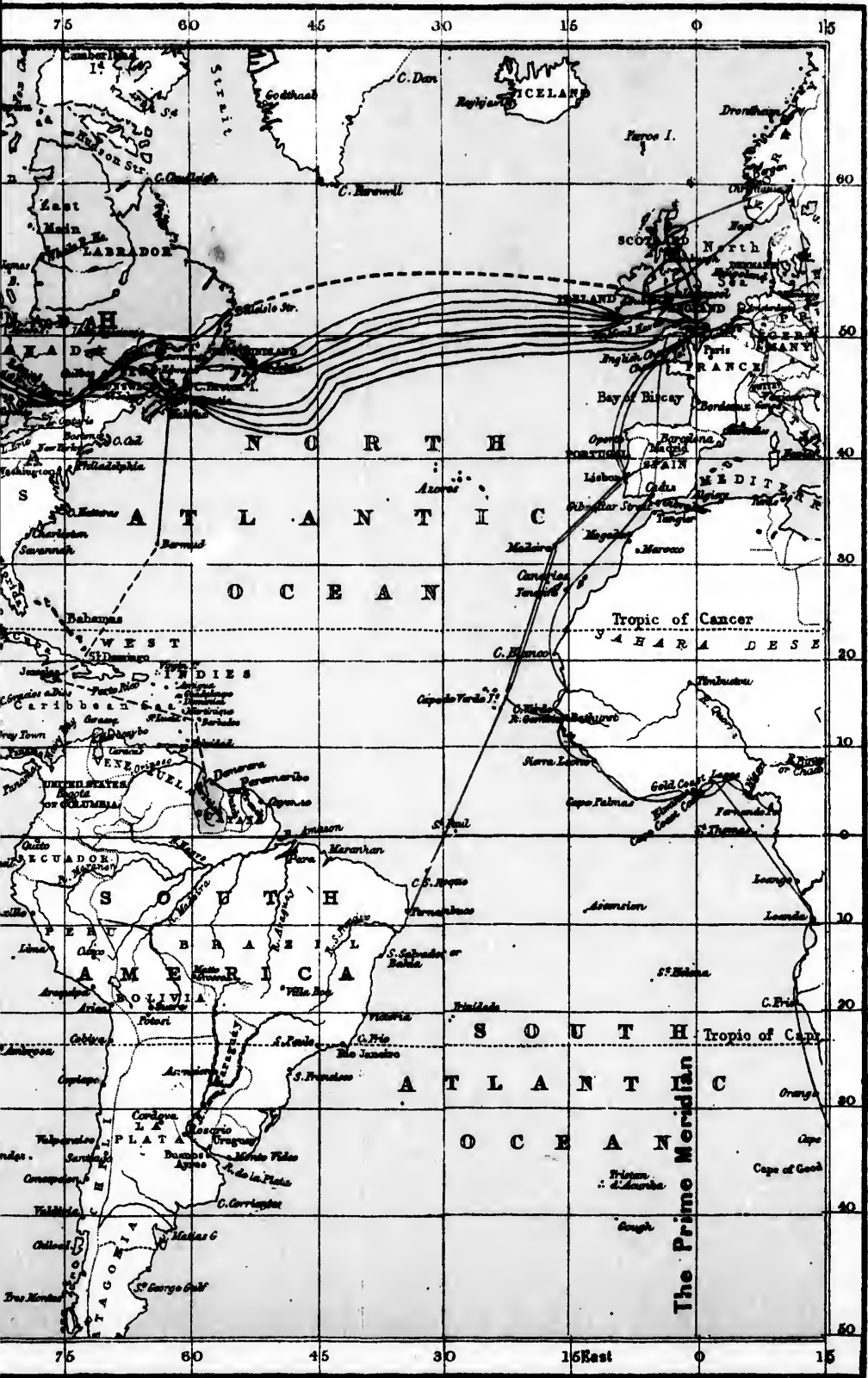


The Red lines, indicate the existing lines of Telegraph from England to India, At
The Blue lines indicate the Telegraph system of the British Colonial Empire referred to in

PROJECTION.



Australiâ and South Africa, each one of which passes over the Territory of Foreign Powers.



The Prime Meridian

