

CANADIAN CONTRACT RECORD

A WEEKLY JOURNAL OF PUBLIC WORKS, TENDERS, ADVANCE INFORMATION AND MUNICIPAL PROGRESS

EVERY WEDNESDAY

This paper reaches every week the Town and City Clerks, Town and City Engineers, County Clerks and County Engineers, Purchasers of Municipal Debentures and leading Contractors in all lines throughout Canada.

Vol. 13.

JULY 30, 1902

No. 25

THE CANADIAN CONTRACT RECORD, PUBLISHED EVERY WEDNESDAY

As an Intermediate Edition of the "Canadian Architect and Builder."

G. H. MORTIMER PUBLISHING COMPANY
of Toronto, Limited,

CONFEDERATION LIFE BUILDING, TORONTO
Telephone 2362.

Branch Office:
Imperial Building, Montreal.
Telephone Main 2296.

Advertising Rates on application.

TO BUILDERS

Tenders will be received by the undersigned up to WEDNESDAY, AUGUST 13TH, from all trades for the building of a Manse at Woodbridge, Ont. Plans and specifications can be seen at the office of John Natras, Clerk of the Court, Woodbridge. The lowest or any tender not necessarily accepted. DONALD MACKENZIE, Chairman Building Committee, Woodbridge, Ont.

BRICK PAVEMENTS

Tenders will be received by the undersigned up to 12 o'clock noon, of TUESDAY, THE 12TH DAY OF AUGUST, 1902, for the construction of about 1000 lineal feet of vitrified Brick Pavement, on a concrete bed with cement curbing on William street, from the Canadian Pacific Railway to Hade street (25 feet wide).

Also for the construction of about 700 lineal feet of vitrified Brick Pavement on a concrete bed with cement curbing on Sixth street from the Creek bridge to the s.s. of Wellington street (20 feet wide), in the city of Chatham, Ontario, according to plans and specifications on file in the city engineer's office in said city.

Tenders must be accompanied by a marked cheque for 10 per cent. of the tender.

Contractor to furnish material of every description for said work.

The lowest or any tender not necessarily accepted.

W. G. MERRITT,
City Clerk.

Chatham, Ont., July 18th, 1902.

Tenders Wanted

Tenders are invited by the Corporation of Annapolis Royal, N. S., for the installation and extension of the

Electric Lighting Plant

in the above mentioned Town. Plans and specifications of proposed installation may be had or seen by intending Contractors at the office of the Town Clerk, Annapolis Royal, N. S. All tenders to be sealed and to be marked "Tenders for Light Extension" and to be in by NOON OF AUGUST 27th, 1902.

Tenders are also invited for the construction and erection of a Dam, Flume, Power House, Water Wheel, Draft Tube, etc., complete, in connection with the above electrical installation. Plans or specifications may be had or seen by intending contractors at the office of the Town Clerk at Annapolis Royal, N. S. All tenders to be sealed and to be marked "Tender for Hydraulic Work" and to be in by NOON OF AUGUST 27th, 1902.

FRED W. HARRIS,
Town Clerk.

Annapolis Royal, July 13th, A. D., 1902.

TENDERS

for macadamizing St. Patrick and Wellington streets, also for sewers on Daly, Brunswick and Wellington streets, will be received by the undersigned up to AUGUST 4TH, at 7 p.m. Plans and specifications may be seen at the office of Angus Smith, City Engineer. The lowest or any tender not necessarily accepted.

THOS. SAVAGE,
Chairman Board of Works, Stratford, Ont.

TENDERS

From the different trades will be received by the undersigned up to TUESDAY, AUGUST 27th, for the erection of a large Spinning Mill Factory at Guelph, Ont., for the Guelph Worsted Spinning Company.

The bidders do not bind themselves to accept the lowest or any tender.
Plans and specifications may be seen at my offices, Guelph, Ont.

W. FRYE COLWILL,
Architect.

TENDERS

Tenders are invited by the undersigned up to AUGUST 22nd for the several trades required in the erection of the Macdonald Buildings at Guelph Agricultural College.

Plans and specifications may be seen at the College or at the Architect's office.
The lowest or any tender not necessarily accepted.

G. M. MILLER & CO., Architects,
50 Yonge Street, Toronto.

TENDERS

FOR

Cement Sidewalks

Tenders will be received at the Town Clerk's office, Whitby, Ont., until AUGUST 27th, 1902, for the materials and construction of about 7,000 feet of Cement Sidewalks. Tenders must be accompanied by a deposit of fifty dollars. The Corporation does not bind itself to accept the lowest or any tender.

JOSEPH WHITE, Town Clerk,
Whitby, Ont.

JOSEPH MITCHELL,
Chairman Streets Committee.

CONTRACTS OPEN.

GRANBY, QUE.—The council may purchase a road roller.

SYDNEY, N.S.—A new union station will be built on Pitt street.

SANDWICH, ONT.—It has been decided to raise \$6,000 to meet current expenses.

PERTH, ONT.—William Moore intends building a two-storey brick veneered dwelling.

HINTONBURG, ONT.—Plans are being prepared for the proposed Separate school.

BRANTFORD, ONT.—Tenders are asked for rebuilding the Brantford Starch Works.

LISTOWEL, ONT.—Plans have been

prepared for new Salvation Army barracks to be built here.

RIVIERE DU LOUP, QUE.—A round house will be built here by the Intercolonial Railway.

PETERBOROUGH, ONT.—It is probable that a new Collegiate Institute will be built in the near future.

ORILLIA, ONT.—A syndicate of local capitalists are considering the erection of a large summer hotel here.

HALIFAX, N. S.—Tenders will be called shortly for building the south wing of the Mount St. Vincent building.

AMHERSTBURG, ONT.—Plans by Williams Bros. have been accepted for addition to Richmond street school.

GUELPH, ONT.—Plans have been prepared for extensive alterations to the post office, including new clock tower.

NEW WESTMINSTER, B. C.—The contract will likely be awarded this week for building new public library.

WOODSTOCK, ONT.—A water-works engineer is wanted to superintend the Woodstock water and light system.

UPTEGROVE, ONT.—Gillespie & Co. are asking for tenders for erection of a grain warehouse, 50x80 feet.

BEAVERTON, ONT.—A project is on foot, promoted largely by Lindsay capitalists, to establish cement works here.

HULL, QUE.—Mr. Kerr, city engineer of Ottawa, will prepare plans for work to be done on the waterworks system.

MOUNT ALBERT, ONT.—Miss Leek wants tenders by August 31st for erection of brick building for Sovereign Bank.

RUSSELL, MAN.—A by-law to raise \$11,000 for constructing roads and bridges was recently defeated by the ratepayers.

COLLINGWOOD, ONT.—The plans for library building have been finally accepted. The cost without furnishings will be about \$14,500.

SOURIS, MAN.—J. W. Breakey will receive tenders up to August 9th for construction of the sub-structure of a bridge across the Souris River.

LANSDOWNE, ONT.—The Presbyterians have decided not to build their manse this year owing to the tenders exceeding the appropriation.

SMITH'S FALLS, ONT.—B. E. Sparham, town clerk, invites bids up to August 15th for the purchase of \$43,162 1/2 per cent. debentures.

PERTH, ONT.—John Thornton has purchased property, corner Harvey and Beckwith streets, on which he intends erecting a brick veneered dwelling.

THAMESVILLE, ONT.—Tenders

are invited by H. L. Johnston, village clerk, up to August 12th, for construction of concrete arch over the Cornwall creek.

LAKEFIELD, ONT.—Whole or separate tenders are invited by J. M. Kilbourn for development of water power at dam No. 3, Lakefield division Trent canal.

ST. RAYMOND, QUE.—Marcote, Hardy & Pepin have formed a partnership for the purpose of constructing a telephone line between St. Raymond and Cap Sante.

HAMIOTA, MAN.—Offers will be received by L. B. Latimer for excavating and constructing a drain in Ward 4; excavation, 5,000 cubic yards; drain pipe, 1,200 feet.

CORNWALL, ONT.—Plans prepared by G. M. Bilyly, architect, of Ottawa, have been accepted for proposed library building, which will be red brick, hot-water heating, cost \$6,000.

ST. BONIFACE, MAN.—The Manitoba Government will shortly commence the construction of a new normal school at the corner of Nasseau and Messenger streets, to be brick and stone, cost \$15,000.

BROCKVILLE, ONT.—J. Saubnier, of the Union Hat Works, St. Johns, Que., states that plans have been completed for new factory to be built here, and that tenders will likely be invited this week.

WINCHESTER, ONT.—Dunn & Fullerton invite tenders up to Tuesday, August 8th, for the construction and enlargement of sections 2 to 12, inclusive, of the Carlyle drain in the township of Winchester; estimated excavation, 3,270 feet.

VAUDREUIL, QUE.—The municipal councils of the villages of Vaudreuil and Dorion have asked for tenders for construction of a portion of proposed waterworks system. T. J. Charbonneau, 15 St. Lambert Hill, Montreal, is consulting engineer.

VANCOUVER, B. C.—Plans have been prepared for extensive alterations and improvements to the Strathcona Block, corner Granville and Georgia streets.—It is understood that eastern capitalists will build another shingle mill on Coal Harbor.

ROSSLAND, B. C.—The city council are now installing a cedar flume to convey water from Rock Creek, 8 miles distant, to connect with the present waterworks system. The flume will be completed before winter and is expected to cost about \$8,000.

STRATFORD, ONT.—A by-law will be submitted to the ratepayers on August 14th to grant financial aid to the Kemp Co. for the erection of a factory.—The plans for Carnegie Library are being modified so as to reduce the cost. Contracts will likely be awarded this week.

ST. JOHN, N. B.—Plans have not yet been accepted for the Carnegie library.—It is probable that the government will build a steel structure to replace the Suspension bridge. The cost will be about \$250,000.—G. R. Vincent, county secretary, is prepared to receive bids on \$21,000 of debentures.—Tenders will be invited next week for the new I. C. R. roundhouse. It will have accommodation for 18 locomotives and will be thoroughly equipped with a coaling plant, machine shop, etc.

SYDNEY MINES, N. S.—The Bank of Nova Scotia has commenced the erection of a new building.—The Nova Scotia Steel & Coal Co. have had plans prepared for a large mechanical building

to be built near the Queen Colliery.—The Nova Scotia Steel & Coal Co. are about to erect ten additional coke ovens.

NIAGARA FALLS, ONT.—The by-law to raise \$13,000 for another waterworks pump and new rising main has been given two readings in council.—The School Board has asked for \$7,400 for a new wing.—C. W. Beale, of Toronto, has written to the council regarding the location of a mill here, to cost about \$35,000.

FORT WILLIAM, ONT.—Tenders are asked by John Cooper, chairman Board of Works, up to August 1st for construction of 14,000 square feet of granolithic sidewalks.—The by-law granting a bonus to Copp Bros. to establish a foundry here was carried by a large majority last week.—W. Western is taking tenders on erection of a three storey brick block on Victoria avenue.

MONCTON, N. B.—D. Pottinger, manager Intercolonial Railway, invites tenders up to 31st inst. for addition to blacksmith shop.—Tenders will be received at the Intercolonial Railway office up to Tuesday, August 12th, for grading and track laying on a branch line of railway from Riviere Ouelle station to St. Denis wharf, on the St. Lawrence river, a distance of 6 1/4 miles.

LONDON, ONT.—Herbert Matthews is calling for tenders for a six-storey warehouse to be erected on Talbot street for J. Darch & Sons, saddlers.—H. C. McBride, architect, is calling for tenders for alterations to residence on Burwell street for R. Kidner and to store front on Dundas street for Pocock Bros., boot and shoe merchant. He is also taking tenders on three residences for Mr. Bernard.

WINNIPEG, MAN.—W. B. Luit, architect, is preparing plans for a basement and four-storey brick and stone warehouse to be built on Portage avenue east for the Emmerson-Hague Mfg. Co., also for two brick houses on Balmoral street for F. Wellley and a brick house on Spence street for C. Biss.—The Cockshutt Plow Co., of Brantford, intend erecting a new warehouse in this city, four-storeys, brick and stone, cost \$50,000. Construction will likely be carried out this fall.

SAULT STE. MARIE, ONT.—James Thomson, architect, has prepared plans for a brick residence to be built on Pine street for W. A. Quibel.—Reynolds

& Company, bankers, are financing a deal for the erection of a \$40,000 block, to be five storeys and to contain opera house, stores and offices.—It is probable that the proposed post-office will not be built this year.—Head & Radford, architects, have prepared plans for a \$7,500 hotel to be built by William O'Brien.—W. J. Bell will build an hotel at the corner of Bruce and Queen streets.

HAMILTON, ONT.—The Cataract Power Co. have decided to install a 3,500 horse power steam plant.—A. W. Peane, architect, has been granted a permit for alterations to 99 South Wentworth street, to cost \$1,600.—G. E. Waller, manager Hamilton, Grimsby and Beamsville Electric Railway, wishes to purchase 10,000 cedar railroad ties and 250 cedar trolley poles.—Mrs. H. Broderick is building three brick dwellings on Barton street, to cost \$3,600.—Cleveland capitalists are said to be promoting the construction of an electric railway between this city and Toronto.

MONTREAL, QUE.—The Lachine Rapids Hydraulic & Land Co. have purchased property fronting on St. Thomas and Seminary street on which it is proposed to build a transformer station.—Artists are invited to submit designs for a monument in honor of the Canadian soldiers who fought in South Africa. Particulars from P. Davidson, London and Lancashire Building.—It is the intention of the city to pave Commissioners street with granite blocks.—Building permits have been granted as follows: Eugene Charbonneau, three storey house, Rivard street, cost \$2,500 (Bernier & Giroux, architects); C. J. Morris, alter-

The Dominion Securities

Corporation, Limited

26 King St. E., TORONTO.

Highest market prices
paid for

MUNICIPAL DEBENTURES

Portland Cements

Highest Grade

American, German, English and Belgian

DRAIN PIPES and Connections of all kinds.

PAVING BRICKS, ENAMELLED BRICKS,

FIRE BRICKS, FIRE CLAY, Etc., Etc. * *

F. HYDE & CO.,

31 Wellington Street

MONTREAL



ALPHA Portland Cement

Quality Unexcelled The Recognized Standard American Brand
Always Uniform. Best in the World for Sidewalks.

ALPHA PORTLAND CEMENT CO.
Manufacturers of but one grade—Strictly Straight Portland.
General Office: ALPHA, N. J.

Sole Canadian Sales Agents

HENDERSON & TAYLOR

203 Commissioners Street, MONTREAL

ations to three storey house, 758 Cadieux street, cost \$1,600, (R. Campagne & Co., contractors); Trustees of Holy Heart, alterations to corner of Plessis and Ontario streets, cost \$3,000; Jeffrey Naud, two three-storey houses, Maison-neuve street, cost \$4,000, also four three-storey houses, Beaudry street, cost \$8,000; Freysing Cork Co., three-storey factory, St. Paul street, cost \$15,000, (Resther & Fiis, architects, L. Payette, contractor.)

OTTAWA, ONT.—It is reported that the Grand Trunk Railway Co. is back of the project to build a railway from Ottawa to Brockville.—A revised plan has been prepared for the Elgin street subway.—W. H. Meldrum, of Peterborough, in association with some American gentlemen, is considering the establishment here of a manufactory of steel shovels, picks, etc.—F. Gelinac, secretary Department of Public Works, invites tenders up to August 5th for construction of wharf at Washabuck Centre, Victoria county, N. S. Plans at above department.—Ald. Davidson states that he will shortly commence operations on the rebuilding of the Hotel Cecil. Plans for same have been prepared by W. S. Paynter and M. C. Edey, joint architects.—Tenders will shortly be called by the Dominion Public Works Department for construction of the Royal Mint.—N. J. Kerr, city engineer, desires tenders by August 2nd for construction of the Bell street and Arthur street sewers.—Recent building permits include the following: William J. Davidson, two brick veneered dwellings, Lisgar street, cost \$3,000; James Wilson, brick dwelling, Somerset street, cost \$2,500; Mrs. I. R. Horbes, brick veneer dwelling, Cooper street, cost \$2,200; W. H. Bishop, brick veneer dwelling, Gilmour street, cost \$1,100.

TORONTO, ONT.—Gordon & Helliwell, architects, Confederation Life Building, are this week taking tenders on a house on Lake Shore road, near Mimico.—L. H. Boweiman, Canada Life Building, wants tenders for extensive repairs to residence on Westmoreland avenue.—Tenders are invited by F. H. Herbert, architect, up to 31st inst. for all trades, except carpenter's work, required in the erection of a pair of semi-detached residences on Spencer avenue, Parkdale.—G. M. Miller & Co., architects, 59 Yonge street, will receive tenders up to August 2nd for erection of the Macdonald buildings at the Guelph Agricultural College.—Tenders are wanted at 52 Wood street for the erection of a residence.—The Bank of Toronto are preparing to build on the south-west corner of Spadina avenue and Queen streets. Although this bank have purchased the block on the south-west corner of King and Bay streets, it is not likely that anything will be done towards erecting a new building there before next year.—The Bank of Hamilton

have acquired the property on the north east corner of Spadina avenue and Queen streets and will shortly build thereon.—Work will be commenced this week on the new Sunday School building for the Dovercourt road Baptist church, to cost \$10,000.—Building permits have been granted as follows: Mrs. Mary Huddard, two-storey and attic brick dwelling, 250 St. Helen's avenue, cost \$3,000; Mrs. Angus Gillies two and a half storey detached brick dwelling, 914 Dovercourt road, cost \$2,000; Trustees of Advent Christian Church, one-storey brick Sunday school building, corner College street and Montrose avenue, cost \$1,500 (H. W. Davis, builder); H. Fitzsimmons, two-storey de-

tached brick residence, north side Simpson avenue, near Broadview, cost \$1,700; W. J. Miller, two-storey brick dwelling, north side Simpson avenue, near Broadview, cost \$1,700 (Charles Bulley, build-



GOOD ROADS

IN EVERY DETAIL.

- Rock Crushers
- Road Graders
- Straw Rollers
- Horse Rollers
- Spreading Wagons
- Dump Carts
- Wheel Scrapers
- Drag Scrapers
- Railroad Plows
- Road Plows
- Pick Hoes
- Concrete Moulds
- Engines—all Powers
- Et., Etc., Etc.

CATALOGUE FREE.

A. E. AMES & CO.

BANKERS.

18 King Street East, TORONTO.

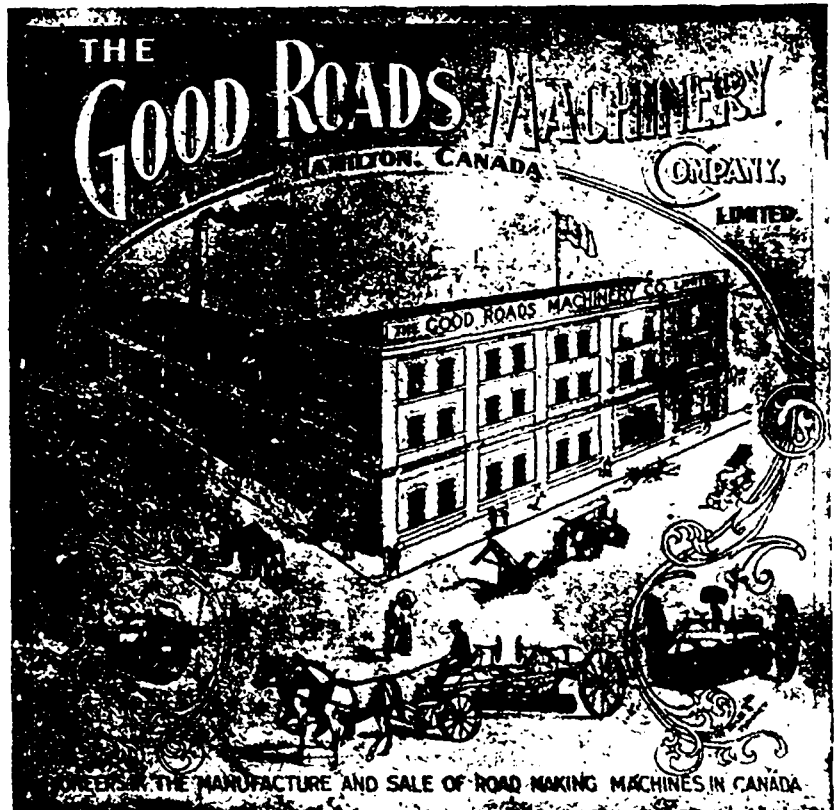
Buy and Sell

GOVERNMENT, RAILROAD and MUNICIPAL SECURITIES.

SAWYER & MASSEY CO., Limited
HAMILTON, ONT.

GOOD ROADS

THERE IS ONLY ONE
GOOD ROADS MACHINERY COMPANY, Limited



THE GREY AND BRUCE PORTLAND CEMENT COMPANY

of Shallow Lake, Limited.

Manufacturers of

"HERCULES" BRAND OF PORTLAND CEMENT

Very finely ground. Unsurpassed for sidewalks, floors and all work requiring the highest grade of Portland cement. For prices address,

A. D. CREASOR, Sec'y-Treas.
Head Office, Owen Sound, Ont.

Sole Owners of the Manufacturing and Sale Rights and Patents of the celebrated "CHAMPION" Line of Road-Making Machines, comprising:—Road Graders, Rock Crushers, Elevators, Revolving and Chute Screens, Macadam Spreading Waggons, Street Cleaners, Road Plows, Wheel and Drag Scrapers, etc.

JOHN CHALLEN, President and General Manager.
Late Killey-Beckett Works, 144 York Street.

HAMILTON, ONT.

MUNICIPAL DEBENTURES BOUGHT

ÆMILIUS JARVIS & CO. (Toronto Stock Exchange) 19-21 King St. West, TORONTO, Ont.

er); William McBean, six attached stores and dwellings, brick and stone, corner Dundas street and Gladstone avenue, cost \$18,000; Bank of Toronto, two-storey stone and brick building, corner King and Bathurst streets, cost \$15,000 (Chadwick & Beckett, architects, Page & Co., builders); S.P. May, three attached brick dwellings, Winchester street, near Parliament, cost \$6,000 (Symons & Rae, architects; Smallwood Bros., builders); Dr. E. Langrill, two-storey brick-fronted rough-cast dwelling, 17½ Spruce street, cost \$1,200; Trustees Church of Christ, two-storey brick church, east side Bathurst street, near College, cost \$6,000 (Malcolmson & Higginbotham, architects).

CONTRACTS AWARDED.

BUCKINGHAM, QUE. — Sewer : Murphy & Lowry, contractors.

GLENCOE, ONT.—New abutments to Strathburn river bridge. : Ponsford Bros., contractors, \$1,375.

DEBENTURES

Municipalities contemplating the issue of Debentures will find it to their advantage to communicate with

G. A. STIMSON & CO.
Investment Dealers

21 and 26 King St. W. TORONTO

THE CRESCENT CONCRETE PAVING CO.

Contractors for all branches of

CONCRETE WORK

77 Victoria Street, TORONTO

Yards: 133-135 Wellington St. West.
Phone Main 1649.

Municipal Supplies...

Rock Crushers with Elevators and Revolving Screens, Road Graders, Mud Scrapers, Watering Carts, Steam Road Rollers, Fire Engines, Etc.

T. A. Morrison & Co., 204 St. James St., Montreal.

Paving Granite

Granite Sets for Street Paving. — CURBING cut to any shape ordered. — Fine Rich Colors for Building and Monumental Purposes.

Quarries, St. Philippe d'Argenteuil, P. Q.

Address all communications to

JOS. BRUNET - COTE DES NEIGES, MONTREAL

CHATHAM, ONT.—Public Library building : Robertson & McKie, successful tenderers, \$15,589.

STRATFORD, ONT. — Granolithic walks : Guelph Pavement Co., successful tenderers, 11c. per square yard.

PORT DALHOUSIE, ONT.—Granolithic sidewalks : Newman Bros., of St. Catharines, successful tenderers.

AYLMER, ONT. — Concrete walks : P. L. Marden & Co., of London, successful tenderers, 10¼ cents per foot.

CARMAN, NAN.—Hotel for William Clougher : Masonry, Joseph Williams; carpenter work, W. A. Fraser, of Emerson

NEW WESTMINSTER, B.C. — Car factory for the British Columbia Electric

Railway Co., : David Bain, contractor, \$5,350.

MONTREAL, QUE.— Fogarty Bros. have been awarded the contract for the electric power and lighting of The James McCready & Co.'s new factory.

LONDON, ONT. — Contracts have been let for residence for Miss Hill on the "Ridgeway," South London, and one for Mrs. Kennedy on Wellington street.

WINDSOR, ONT.—Steam heating of public library : White & McFarlane, successful tenderers, \$1,200.53; tile and metal roofing, Pennington & Bryan, \$1,700.

PETROLIA, ONT. — Residence for John Morrison: J. & J. Kerr, contractors,

(Continued on page 6.)

JOSSON CEMENT .. Manufactured at.. NIEL ON RUPELL

Is the Highest Grade Artificial Portland Cement and the Best for High Class Work. Has been used largely for Government and Municipal Works.

TO BE HAD FROM ALL CANADIAN DEALERS

C. I. de Sola, Manager in Canada :: 180 St. James Street, MONTREAL

Dominion Bridge Co., Ltd. STEEL BRIDGES

For Railways and Highways
Piers, Trestles, Water Towers
Tanks, Buildings, Roofs, Girders,
Beams and Columns

P. O. Address, MONTREAL, P. Q.
Works at LACHINE LOCKS, P. Q.

Toronto Agent : GEO. E. EVANS,
38 Canada Life Bldg., TORONTO, ONT

THE CANADIAN SEWER PIPE CO.

MANUFACTURERS OF ..



— FOR —
Sewers

CULVERTS

AND

WATER PIPES.

INVERTS

for Brick Sewers

Write for Discounts

TORONTO ONT.

ST. JOHN'S, HAMILTON
P. Q. ONT

The Canadian Bridge Co., Limited

WALKERVILLE, ONT.

MANUFACTURERS OF

RAILWAY AND HIGHWAY BRIDGES

Locomotive Turn Tables,
Roofs, Steel Buildings and
Structural Iron Work of all descriptions.

PERFECTION STEEL-GLAD AND BRICK SET INCINERATORS

MANUFACTURED BY Toronto Furnance & Crematory Co., LIMITED

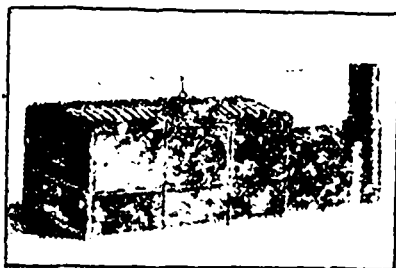
14 and 16 Queen St. East, TORONTO, CANADA.

Experts in sanitary disposal of dangerous wastes,

Garbage, Refuse, Night Soil, Dead Animals,

For Cities, Towns, Hospitals, Hotels, Abattoirs, etc.

The plants embody the newest features of modern practice and are constructed to meet the requirements of the smallest towns and the largest cities, capacities ranging from 4 to 100 tons daily. Correspondence invited.



ALWAYS IN STOCK

PIG LEAD, PIG TIN AND SOLDER

Syracuse Smelting Works, Montreal, P.Q.

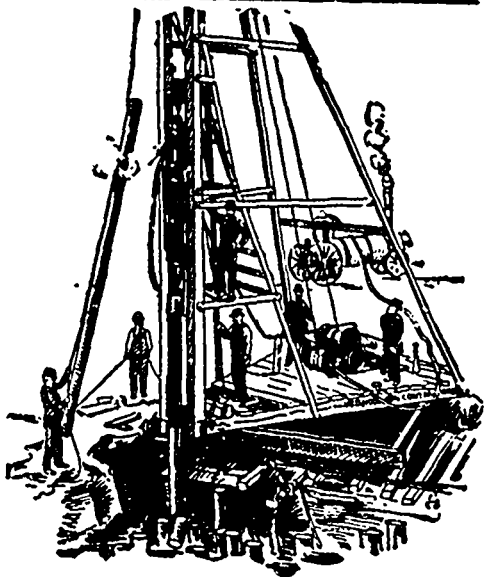
ARTIFICIAL STONE PAVEMENTS

SIDEWALKS A SPECIALTY

CORPORATIONS Will do well to consider our work and prices before letting contracts

The Silica Barustic Stone Company of Ontario, Limited.

WALTER MILLS General Manager. Head office: INGERSOLL, ONT.



PILE DRIVING

on land or water by Steam Pile Drivers or Drop Hammers.

Portable Boilers
Hoisting Engines
Pumping Machinery

TO LET

Bridge Building, Trestle Work, Wharves, Dams, Diving Submarine Work and General Contracting.

WM. HOOD & SON

10 Richmond Sq - MONTREAL

PORTLAND CEMENT

Samson Brand Magnet Brand

MADE AT SHALLOW LAKE, ONTARIO

Our celebrated SAMSON BRAND has been before the public for many years, and has made lots of friends among Contractors and Municipal Corporations until it has become one of the leading Cements on the market today, being excelled by none. This year we have decided to place the "MAGNET" on the market, and respectfully ask consumers to give it a trial. It will, we think, do its own advertising.

Correspondence invited.

GEO. S. KILBOURN, Secretary-Treasurer.

WORKS: Shallow Lake, Ont. - HEAD OFFICE: Owen Sound, Ont

The Canadian Portland Cement Company, Limited

Manufacture "RATHBUN'S STAR" "BEAVER" "ENSIGN"

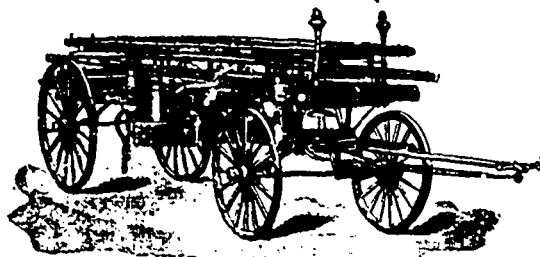
WORKS: Strathcona, Ont.; Marlbank, Ont. CAPACITY: 500,000 Barrels per Annum
-For Prices, write, wire, phone or call on our Sales Agents:

THE RATHBUN COMPANY
310-312 Front Street West
TORONTO, ONT.
Telephone Main 1379.

St. Lawrence Portland Cement Co.
2664 Notre Dame Street West
MONTREAL, QUE.
Telephone Main 3987.

LIGHTNESS, STRENGTH AND ECONOMY

Seagrave Patent Trussed Ladders, Trussed Aerial, City Service and Village Hook and Ladder Trucks, Combination Hook and Ladder Trucks and Chemical



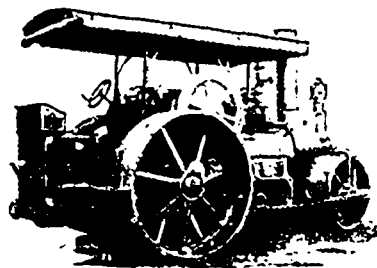
Engines, Trussed Trucks and Hand Pumps, Combination Hose Wagons and Chemical Engines, Hose Wagons, Combination Hook and Ladder Trucks and Hose Wagons, Chemical Engines, Fire Extinguishers, Hose Reels, Patrol Wagons, Ambulances, Specialty Wagons, Patent Sleigh Runners, and other Modern Fire Fighting Tools.

Prompt attention given all inquiries. All goods built to order.

Long Distance
Phones 686 and 684

W. E. SEAGRAVE, WALKERVILLE, ONT.

FIRE APPARATUS and ROAD MACHINERY



FIRE ENGINES in five sizes, with a full line of fire-fighting goods

We Rebuild other makes of Fire Engines with our patent Boiler.

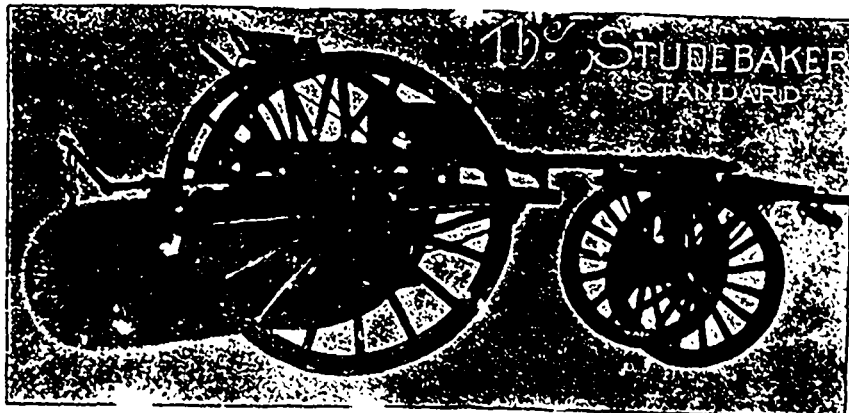
BRANTFORD PITTS DOUBLE ENGINE STEAM ROAD ROLLER

IN THREE SIZES—10, 12 and 15 ton.

CORRESPONDENCE SOLICITED.

WATEROUS, Brantford, Canada.

Hugh Cameron & Co., Selling Agents, 16 East Queen Street, Toronto



Studebaker Sprinkler

(PATENT IMPROVED.)

Does not clog or get out of order. Greatest width of spray. Can be grade from driver's seat to any volume. We also make an . . .

IMPROVED VERTICAL SPRAY . . . for Pavement

Geo. Heaman, Mnfr., London, Ont.

Stackpole Patent Improved **Street Sweeping Machine** is the Standard of Perfection.
Because no sweeper so effectually does the work for which it is designed as "The Studebaker." It Sweeps Clean. No sweeper is constructed with the same degree of care and mechanical precision. It Wears Well. "The Studebaker" has the smallest possible number of working parts, and has less bearing than any other sweeper made. It is free from all unnecessary complications. With reasonable care it does not get out of order. Send for complete descriptive catalogue

cost about \$3,500.—Brick residence for John Bickle: R. J. Jackson & Sons, contractors.

FREDERICTON, N. B.—Bridge at Newcastle: J. D. McLaughlin, contractor. Bridge at Cole's Island: J. B. Simons, of St. Mary's, contractor. Above bridges will cost about \$14,000.

PEMBROKE, ONT.—Macadam roadway on Pembroke and Mackay streets: T. S. Kirby & Co., Ottawa, successful tenderers, \$10,400.—Granolithic pavements on Pembroke and Mackay streets: F. Dolan & Sons, of Belleville, successful tenderers, 17 cents per square foot.

QUEBEC, QUE.—H. Dorian has secured the contract for stone pavement and wall and asphalt in front of St. John's church; price \$4,650.—The tender of Charles A. Parent, representing the Gutta Percha & Rubber Co., Toronto, has been accepted for the supply of 2,000 feet of fire hose.

LONDON, ONT.—Addition to the waterworks pump house: Masonry and brickwork, Ed. Martyn, \$1,721; carpentering, L. H. Martyn, \$545; wire and ironwork, Dennis Wire and Iron Company, \$135; galvanized iron, Sutherland Bros., \$160; painting, W. S. Lockhart, \$75; plastering, A. Dowell, \$96.

VANCOUVER, B.C.—The Vancouver Power Co. have awarded to Ironsides, Rennie & Campbell the contract for con-

structing a tunnel 2½ miles in length through the mountain separating lakes Beautiful and Coquitlam. The tunnel will cost \$250,000, and the entire cost of the power scheme will be over one million dollars.

TRENTON, ONT.—Gilmour & Company, Limited, have been awarded the entire contract for the inside finish of the Board of Trade Building, Montreal. This, in conjunction with their doors, etc., in the King Edward Hotel, Toronto, bears excellent testimony to the quality of their work and capacity of their factories.

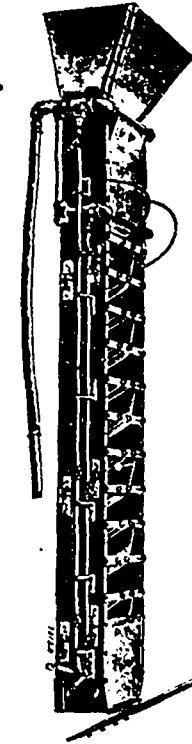
WINNIPEG, MAN.—Contracts have been let as follows for the erection of the Alexandra school: Kelly Bros., excavation, drains, stone and brick work, cement floors, plastering, \$16,900; John McLeod, carpenter and joiner work, \$11,845; Rutley H. & V. Co., heating and ventilating apparatus, \$2,500; Jas. A. Payne, painting and glazing, \$1,640; Douglas Bros., tin and galvanized iron work, \$1,455; J. L. Wells & Co., plumbing, \$446; E. S. Harrison, electric wiring and fixtures, \$285. Total \$35,071.

TORONTO, ONT.—The Board of Control last week awarded contracts as follows: Asphalt pavements—Soho street, Queen to Phoebe, \$2,295; Louisa street,

Yonge street to Teraulay, \$7,179, Constructing and Paving Co. Brick pavements—Grant street, Queen to Kintyre, \$3,355; A. Chamberlain & Co.; Cross street, Beaconsfield to Gladstone, \$2,500, Dominion Paving and Constructing Co.; Givens street, Argyle to Halton, \$1,897, (Continued on page 8.)

The Best is the Cheapest.

The Portable Gravity Concrete Mixer



Weight about 500 lbs.
High Grade Concrete at very low cost for labor.
Portable.
Large Capacity.
Extremely Simple.
No power used.
No Skilled Labor.
Continuous in Action.

Send for 100 page Catalogue.

E. F. DARTNELL,
Sales Agent,
MONTREAL

WATERWORKS PUMPS

Municipalities contemplating the installation of waterworks pumps will find it to their advantage to investigate our pumps—both as to cost and service.

Northey pumps are giving satisfaction under all sorts of conditions in scores of towns in Canada.

WE MAKE

Pumping Machinery
"For all Duties"

Write or telegraph and we will send a representative to you to make a personal inspection.

Northey pumps are designed for efficient, continuous work and meet the requirements.

THE *Northey Company Limited, Toronto*

M. BEATTY & SONS

WELLAND, ONT.

Dredges, Ditchers, Derricks and Steam Shovels
of various styles and sizes to suit any work.

Submarine Rock Drilling Machinery, Hoisting Engines, Suspension Cableways, Horse-Power Hoisters, Gang Stone Saws, Centrifugal Pumps for Water, Sand and Gold Mining, and other Contractors' Plant.

McGREGOR & McINTYRE, LIMITED,

65 to 73 Pearl Street, Toronto, Ont.

STRUCTURAL IRON WORKS

Fire Escapes, Library Racks, Sidewalk Doors, Jail Cells, Iron Stairs, Railings, Etc., Etc.

WRITE FOR ESTIMATES.



In Excavating in rock for sewers, gas or water mains, use our

ROCK DRILLS

CANADIAN RAND DRILL CO., Sherbrooke & Montreal, Que.

The KERR ENGINE COMPANY, Limited

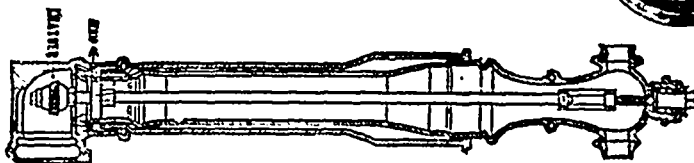
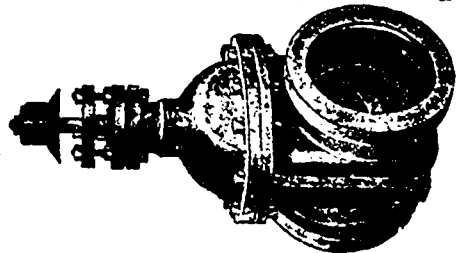
PUMPING MACHINERY

HYDRANTS and VALVES

Are our Specialty

Don't fail to write us for Catalogue and prices.

WALKERVILLE, - ONTARIO



MUNICIPAL ENGINEERS, CONTRACTORS AND MATERIALS

WILLIS CHIPMAN

Hon. Grad. McGill University.
M. Can. Soc. C.E. M. Am. Soc. C.E.
Mem. Am. W.W. Ass'n.
WATERWORKS, SEWERAGE WORKS, GAS
WORKS, ELECTRIC LIGHT AND
POWER PLANTS
Reports, Surveys Construction, Valuations
103 BAY STREET - TORONTO

R. E. SPEAKMAN, C.E.

A. M. Inst. C. E., 1878.
CONSULTING ENGINEER

Waterworks, Sewerage and Sewage Disposal.
Municipal Improvements.
Granolithic Pavements.
Electric Light Plants.
Drainage and Irrigation of Land.
Coal Handling Plant and Machinery.
Plans, Specifications and Estimates.
Construction and Valuations.

Canada Life Building - TORONTO

Roderick J. Parke

Am. Can. Soc. C.E., A.M. Amer. Inst. E.E.
CONSULTING ENGINEER

Hydraulic Power Development. Long Distance
Power Transmission. Steam Plants, Electric
Lighting and Power Systems. Tests.
Valuations. Reports.

409-410 Temple Building, TORONTO, CANADA

Telephones { Office—Long Distance Main 3047
{ Residence—Long Distance North 2204
Telegraphic address: "Rodparke."
W. U. Code, Univ. Edition.

Wm. Mahlon Davis

Graduate R. M. College.
M. Can. Soc. C. E. Ont. Land Surveyor.
CONSULTING ENGINEER

BERLIN, ONT.

Waterworks, Sewerage, Sewage Disposal
Drainage under The Municipal Act, Roadways.

W. G. McNeill Thompson

CONSULTING ENGINEER
M. Inst. C. E. M. Can. Soc. C. E.
M. Am. Soc. C. E.

Examination of Works, Reports, Water Power
Development, &c., &c.

ST. CATHARINES, ONTARIO

ROSS & HOLGATE

Consulting and
Supervising Engineers

Waterworks, Electric Light and Power
Plants, Structural Work, Reports,
Estimates, Arbitrations.

17 ST. JOHN ST. - - MONTREAL
McKINNON BLDG. - - TORONTO

Percival W. St. George

Mem. Inst. C. E. London, England.
Mem. Can. Soc. C. E.

CONSULTING ENGINEER

Railway, Sewerage, Water, Hydraulic,
Expert and Arbitrations, &c.

BELL TELEPHONE BLDG. MONTREAL.
Telephone, Main 4717.

JAMES C. KENNEDY

MEM. CAN. SOC. C.E.

Reports, Supervision, Con-
struction, Dams, Water-
Power Development, Water
Works, Sewerage, Founda-
tions, &c.

P. O. Box 710, OWEN SOUND, ONT.

Please mention THE CONTRACT RECORD
when corresponding with advertisers.

**THE PHOENIX BRIDGE & IRON WORKS,
MONTREAL**

GENERAL STEEL CONTRACTORS

Large Stock I BEAMS, CHANNELS, ANGLES, TEES, ZEES and
PLATES always on hand.

Portland Cements...

HIGH GRADE GERMAN BRANDS FOR GRANOLITHIC
AND ARTIFICIAL STONE SIDEWALKS.

Sewer Pipes, Best English Cements. Best Belgian Cements
Culvert Pipes, &c. **W. McNALLY & CO., Montreal**

W. & F. P. CURRIE & CO.

345 St. James St., Montreal

Importers of.

SEWER PIPES,

CULVERT PIPES, ETC.

VENT LININGS,

FLUE COVERS,

FIRE BRICKS,

FIRE CLAY,

WHITING.



PORTLAND CEMENTS,

HIGH GRADE ENGLISH

" " GERMAN

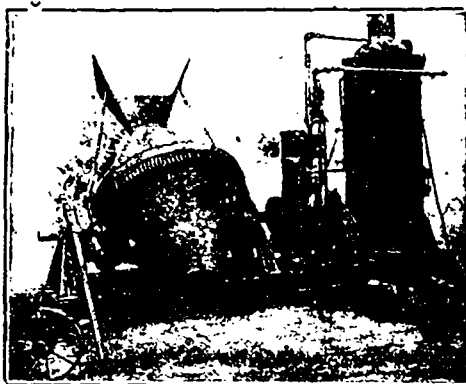
" " BELGIAN

PLASTER OF PARIS

BORAX,

CHINA CLAY.

SMITH
CONICAL
CONCRETE
MIXER



— 11 —
Different
Sizes and
Styles.

Mixes in Batches. Discharges by Tilting while
Running. Mounted on Skids or Trucks.
Catalogue on Application.

— SOLE CANADIAN AGENTS —

**W. H. C. Mussen & Co., 763 Craig St.,
MONTREAL**

**CANADIAN
CONTRACTORS'
HAND-BOOK**

and
Estimator.

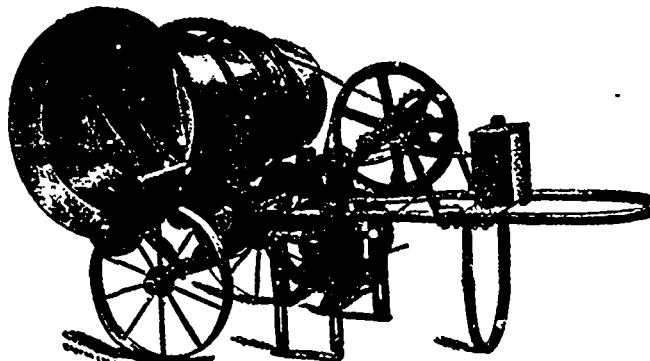
Third Edition

Price \$1.50; to
subscribers of
the Canadian
Architect and
Builder, \$1.00.

SEND FOR A COPY

C. H. Mortimer
Publishing Co.
Toronto.

**McKelvey Concrete Machinery Co.
CHICAGO**



Manufacturers of the
**McKelvey
Concrete
Mixers.**

Steam, hand and
gasoline power
Mixes continuously—
no delays by mixing
in batches.

W. A. McKelvey,
Manager Canadian
Branch,
207 McKinnon
Bldg., Toronto.

Constructing and Paving Company; Delaney Crescent, Brock to Wyndham, \$1,540; Constructing and Paving Company. Tar macadam roadways—Howland Road, Gerrard to Langley, \$3,697; Mackenzie, Dale to Castle Frank, \$3,819; Dale avenue, Glen road to Mackenzie, \$5,175; Walls street, Kendall to Bathurst, \$4,123; Beatrice, College to 422 feet north, \$1,720; Nanton Crescent, Dale to Elm, \$2,269. A. J. Brown. Munro, Queen to Gerrard, \$6,000. Marborough Place, Avenue road to 645½ feet north, \$1,100. Dominion Paving and Constructing Co. Concrete Sidewalks—Ontario, east side, Gerrard to Carlton, \$1.09 per lineal foot; Dunn avenue, east side, King to G.T.R., \$1.07 per foot, W. F. Grant & Co. Carlaw, west side, Queen to Eastern, \$1.08; Wellesley, north side, Jarvis to Homewood Place, 70c. per foot; Dunn avenue, west side, King to G.T.R., \$1.16 per foot; Earl street, north side, Sherbourne to Huntley street, 57½c. A. Chamberlain & Co. Elm avenue, south side, Sherbourne to Glen, 56c.; McGill, south side, Yonge to 197 feet east, \$1.60; Maple avenue, north side, Glen road to 256 feet east, 68c. R. A. Rogers & Co. Elmsley Place, east side, St. Joseph to 323 feet north; west side, St. Joseph to 218 feet north, 47c.; Parliament, west side, first lane north Wilton to Carlton, 69c.; Wilton, south side, Ontario to Reed's Lane, 96c.; Queen's Park, east side, St. Albans to 539½ feet south, 69c., Harvard & Leach Paving Co. Queen street, south side, Bathurst to Tecumseh, \$1.88; Bank, north side, Dufferin to Sheridan, \$1.02; Queen street, north side, Crawford to 46 feet east Dundas, \$2.19. W. R. Payne. Terauley, west side, Gerrard to 84 feet south College, \$1.12. A. Gardner & Co. Beatrice, both sides, College to 422 feet north, 56c.; Lake Shore, Island Hospital to Manitou road, 85c.; Lake Shore, Island Hospital to Clegg's Hotel, 85c., City Engineer. Bloor, north side, 97 feet west Yonge to Avenue road, 63c.; Maynard, east side and west side, King to Leopold, 57c., Hyster, south side Yonge Terauley, \$1.09, Crescent Paving Company. Tile pipe sewer, Godden avenue, \$290, City Engineer.—For repairs to the public schools tenders have been accepted as follows: Carpenter work—Church Street School, Wm. Cavan, \$625; Clinton Street School, A. Batho, \$247; Dewson Street, A. Batho, \$211; Dufferin School, T. Cratchley, \$327; Givens Street,

William Eaton, \$141; Grace Street, J. Bailey, \$85; Hamilton Street, W. Williamson, \$536; Huron Street, A. Batho, \$150; Leslie Street, W. Williamson, \$478; Louisa Street, W. Eaton, \$343; Manning Avenue, W. Eaton, \$95; Parliament Street, M. Hutchinson, \$128; Rose Avenue, E. Hollett, \$629; masonry, R. Clayton, \$190.

Riopel & Crochettere have registered as contractors in Montreal.

Lyons Electric Co. - Brantford, Ont.
Contractors, Specialists, General Supplies.
Close Figures on High Class Work.

Maguire Bros., builders' supplies, Toronto, have dissolved partnership, William Maguire continuing.

The Toronto Contracting & Paving Company, Limited, has obtained a charter of incorporation.

JOHN GALT, C.E. & M.E.

MEM. CAN. SOC. C.E. AND C.E.A., ETC.

CONSULTING ENGINEER and EXPERT

ROOM 12, ABERDEEN CHAMBERS,
Cor. Victoria and
Adelaide Sts., Toronto

Specialties—Water Supply and Sewerage.

Portland Cement..

HIGHEST GRADE

SOLE AGENTS—



BELLHOUSE, DILLON & Co.

30 St. Francois Xavier Street,

MONTREAL

Largest Marts in the World.

BELLHOUSE, DILLON & CO., 30 St. Francois Xavier St., Montreal

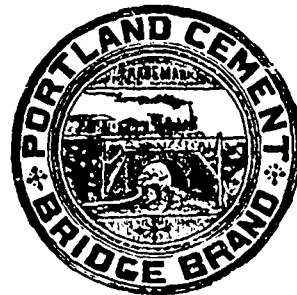
Sole Agents for the Compagnie Generale des Asphaltes de France (Rock Asphalt.)

PORTLAND NORTH'S CONDOR

Paving and Fire Brick a Specialty

"DYCKBRHOPF" and "WHITE CROSS" Brands

NORTH'S CONDOR" BRAND AWARDED FIRST PRIZE AND GOLD MEDAL AT THE ANTWERP EXHIBITION



PORTLAND CEMENT

Sewer Pipes

Fire Bricks

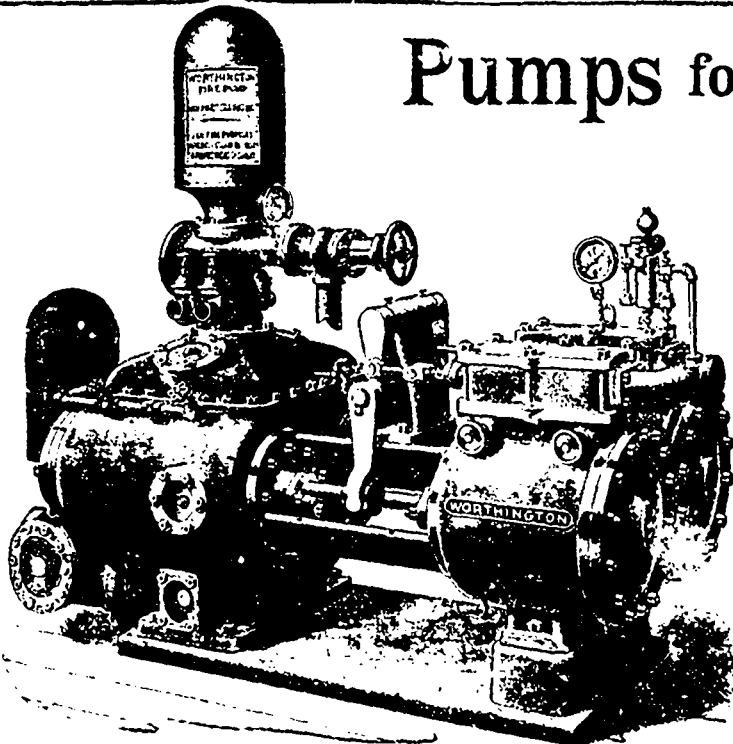
Fire Clay

ALEX. BREMNER

50 Bleury Street, MONTREAL



Pumps for Waterworks



Waterworks Systems
Installed

Steam, Hydraulic, Electric,
Gasoline, Air Lift and
Automatic Rams.

Steam Boilers and
Filters

Write for Prices and Particulars

The John McDougall

CALEDONIAN IRON WORKS CO., LIMITED

MONTREAL, P.Q.

Have One on Me?

OUR DRINKING FOUNTAINS

FOR MAN and BEAST



Should be Found in Every City and Town.

Inexpensive and Reliable

SEND FOR DESCRIPTIVE BULLETIN NO. 7.

CANADA FOUNDRY COMPANY, LIMITED

HEAD OFFICE AND WORKS: TORONTO, ONT.

District Offices: MONTREAL HALIFAX OTTAWA WINNIPEG VANCOUVER VICTORIA ROSSLAND

Montreal Pipe Foundry Co., Limited

Special Castings
Flange Pipe
Branches
Hydrants
Valves



CAST IRON PIPE

Valve Boxes
and
General
Water
Works
Supplies

Works at: FACILITY OF THREE RIVERS QUEBEC LONDON ONT.

Combined daily capacity: 150 Tons Pipes and Castings.

HEAD OFFICE CANADA LIFE BUILDING MONTREAL

ALEX. GARTSHORE, President. J. G. ALLAN, Secretary and Treasurer. JAS. THOMSON, Vice-President and General Manager.

THE GARTSHORE-THOMSON PIPE & FOUNDRY CO. LIMITED.

Manufacturers of:::

Flexible and Flange Pipe,
Special Castings and all kinds of
Waterworks Supplies.



3 inches to 60 inches diameter.

For Water, Gas, Culvert and Sewer

HAMILTON ONT.

Flush Your Sewers with
THE MILLER
AUTOMATIC SYPHON
 (Patented)
 Received **HIGHEST AWARD** at the World
 Columbian Exposition for
 (1) SIMPLICITY OF CONSTRUCTION,
 (2) EFFECTIVENESS, (3) RELIABILITY.
 Write for prices and particulars.
VICTOR HILL,
 General Agent,
P. O. BOX 245, NIAGARA FALLS.

Sicilian
ROCK ASPHALT

Rock Asphalt Powder and
 Rock Asphalt Mastic for street
 paving.
 Contractors, write us for
 close prices.

GEORGE W. REED & CO.
 873 and 875 Craig Street MONTREAL

Prices of Building Materials.

PRESSED BRICK, Per M.

MILTON PRESSED BRICK AND SEWER PIPE CO.
 F.O.B. F.O.B.
 Milton, Ont. Montreal.

| | | |
|---------------|---------|---------|
| Red No. 1 | \$12 50 | \$18 00 |
| " 2 | 10 50 | 16 00 |
| " 3 | 8 50 | 14 00 |
| Buff No. 1 | 15 00 | 20 00 |
| " 2 | 13 00 | 18 50 |
| Brown | 10 00 | 15 50 |
| Roman Red | 10 00 | 15 50 |
| " Buff | 10 00 | 15 50 |
| " Brown | 10 00 | 15 50 |
| Hard Building | 6 50 | 12 00 |
| " Sewers | 6 50 | 12 00 |
| " Lacking | 6 00 | 11 50 |

DON VALLEY PRESSED BRICK WORKS.
 Nos. 1, 2 and 3. Red Pressed Bricks
 No. 1 and 2. Buff Pressed Brick
 No. 1 Brown Pressed Brick
 Pompeian Red, Buff and Brown Pressed Brick
 Ornamental Bricks of all kinds for Mantel pur-
 poses.

TERRA COTTA BRICKS FOR LINING
 Vitrified Street-Paving Bricks
 Semi-Vitrified Foundation Bricks
 Common Stock Red and Grey Bricks
 Sewer Bricks
 Stone for Macadamized Roadways

TORONTO PRESSED BRICK AND TERRA COTTA WORKS
 F.O.B. F.O.B.
 Milton, Ont. Montreal.

| | | |
|---------------|---------|---------|
| Red No. 1 | \$12 50 | \$18 00 |
| " 2 | 10 50 | 16 00 |
| " 3 | 8 50 | 14 00 |
| Buff No. 1 | 15 00 | 20 00 |
| " 2 | 13 00 | 18 50 |
| Brown | 10 00 | 15 50 |
| Roman Red | 10 00 | 15 50 |
| " Buff | 10 00 | 15 50 |
| " Brown | 10 00 | 15 50 |
| Hard Building | 6 50 | 12 00 |
| " Sewers | 6 50 | 12 00 |
| " Backing | 6 00 | 11 50 |

KAMSVILLE BRICK AND TERRA COTTA CO.
 F.O.B. F.O.B.
 Beamsville Montreal.

| | | |
|---|---------|---------|
| Red Peerless Facing | \$15 00 | \$20 50 |
| " No. 1 | 13 00 | 18 50 |
| " No. 2 | 11 00 | 16 50 |
| " No. 3 | 9 50 | 14 00 |
| Red Peerless Facing | 18 00 | 23 50 |
| " No. 1 | 16 00 | 21 50 |
| " No. 2 | 14 00 | 19 50 |
| Moulded and Ornamental Bricks from \$3 to \$10 per C. | | |
| Roman Red (Size 12 x 4 x 1 1/2 in.) | 28 00 | 37 50 |
| " Buff | 28 00 | 37 50 |
| " Brown | 34 00 | 43 50 |
| Vitrified Paving Bricks No. 1 | 18 00 | 24 50 |
| " No. 2 | 18 00 | 24 50 |
| Sewer | 6 50 | 12 00 |
| Roofing Tile | 22 00 | 29 00 |

STONE. Toronto, Montreal

| | | |
|--|-------|-------|
| Common Rubble, per ton, delivered | 12 00 | 11 00 |
| Large Flat Rubble, per ton, delivered | 14 00 | 13 00 |
| Foundation Blocks, per cu. ft. | 10 | 10 |
| Granite (Stanstead) Ashlar, 6 in. to 12 in., rise 9 in., per ft. | | 25 |
| Amherst Red Sandstone | 8 | 70 |
| Amherst N.S., per cu. ft. | 8 1/2 | 75 |
| Sackville, N.B., brown stone | 30 00 | |
| Massilon | | |

INDEX TO ADVERTISEMENTS

In the "Canadian Architect and Builder."

| | | | |
|--|---|--|---|
| Architects. Ontario Directory... 111 Quebec Directory... 111 | Contractors' Plant and Machinery Rice Lewis & Son... IV | Lumber. Gilmour & Co... III Mantels, Grates, and Tiles. Holbrook & Mollington I Rice Lewis & Son... IV Matt Oultes. The Cutler Mfg. Co. I | Reflectors Frink, I. P. 111 Roofing Materials Ormsby & Co. A. B. I Metallic Roofing Co. ix Philip Carey Mfg. Co. viii Roofers Supply Co. II Zanubar Paint Co. ... 19 |
| Architectural Sculptors and Carvers. Holbrook & Mollington... I Architectural Iron Work. Canada Foundry Co. 111 Dominion Bridge Co. I Geo. B. Meadows Co. xiv | Cements. Owen Sound Portland Cement Co. 111 The Rathbun Co. xiv Oreosoite Stains Cabot Samuel... ix Canada Paint Co. ... xi Zanubar Paint Co. ... 109 | Mouldings. Boynston & Co. S. Knechtel Wood Turning Co. xv Mortar Colors and Shingle Stains. Cabot Samuel... ix Muirhead, Andrew... I Zanubar Paint Co. ... 09 Ornamental Iron Work. Dennis Wire & Iron Co. viii Geo. B. Meadows Co. xiv | Stained and Decorative Glass Bloomfield & Son, Henry... v Horwood & Sons, H. v Leonard, B. v Mackey Stained Glass Co. v McKenzie's Stained Glass Works... v Pilkington Bros. xix St. George, H. E. ... 11 The Robt. St. Clair and Stained Glass Co. v |
| Architects' Supplies Chas. Potter... viii Bridges. Canada Bridge Company... III Dominion Bridge Co. I Hamilton Bridge Works Co. IV | Elevators Fensom, John... I Oils Elevator Co. I Miller Bros & Co. I Tombull & Russell ColV Williams & Wils. n. ... II | Paints and Varnishes Canada Paint Co. ix Globe Paint Co. 70 Hollywood Paint Co. xvi Imperial Varnish & C. L. Co. 110 Muirhead, Andrew... I Zanubar Paint Co. ... xii | Sanitary Supplies James Morrison Brass Co. 111 Shingles and Siding Metallic Roofing Co. ix Ormsby & Co. A. B. I Roofers Supply Co. ... I Hot Pipe. Toronto Foundry Co. II |
| Builders' Supplies. Alabama Co. I Luxfer Prism Co., Limited... xii Montreal Directory, xvi Ontario Lumber Association... xvi Robertson & Co. D. vii Rice Lewis & Son... IV Toronto Directory... xvi | Engravers. Can. Photo-Eng. Bureau... ii Fire-Proof Doors, Etc. Canadian Fire-Proof Door and Shutter Co. v Folding Partitions. Springer, O. T. II | Patenters. Montreal Directory... xv Toronto Directory... xv Prisms. Luxfer Prism Co., Limited... viii Pilkington Brs. ... xiv Paints and Varnishes Canada Paint Co. ix Globe Paint Co. 70 Hollywood Paint Co. xvi Imperial Varnish & C. L. Co. 110 Muirhead, Andrew... I Zanubar Paint Co. ... xii | Tubing and Fittings Richmond Conduit Co. iii Tiles. American Enamelled Brick & Tile Co. ... I Holbrook & Mollington I School and Church Furniture. Globe Furniture Company... v Can. Office & School Furniture Co. 111 |
| Building Stone Dealers. Amherst Red Stone Quarry Co. vii Credit Forks Stone Co. vii Brookfield Stone Co. vii Hood & Son... vii Kline John... vii Horsehoe Quarry... vii Koberman & Co., D. vii Silex Stone Quarries Co. vii Sackville Free Stone Co. vi Samuel & Sons, Thos. vii | Granite Brunet, Jos. vi Heating. Clare Bros. & Co. x Darling Bros. iii Gurney, T. den. Co. ii Ives & Co. vi James Smart Mfg. Co. xiv Ormsby & Co. A. B. I | Parquet Floors Elliott & Son Co. viii Plate Glass Pilkington Brs. ... xiv The Consolidated Plate Glass Co. II Toronto Plate Glass Co. viii | Wall Paper A. H. Mitchell Co. ... I Albert Mfg. Co. ... xi Wire Lathing The H. Greenleaf Wire Company... 111 Window Cord. Samson Cordage Works. xiv |
| Building Stone Dealers. Amherst Red Stone Quarry Co. vii Credit Forks Stone Co. vii Brookfield Stone Co. vii Hood & Son... vii Kline John... vii Horsehoe Quarry... vii Koberman & Co., D. vii Silex Stone Quarries Co. vii Sackville Free Stone Co. vi Samuel & Sons, Thos. vii | Interior Decoration Albani & Co. I Elliott & Son Co. viii Geo. Jackson & Sons. v Thos. Forster Co. xi | Plumbers Montreal Directory... xvi Toronto Directory... xvi Roofers Campbell & Golday xvi Duthie & Sons, G. xvi Douglas B. xvi Forbes Roofing Co. xvi Nicholson & C., D. xvi Rennie & S. N. Ribt xvi Ormsby & Co. A. B. I Rinham Geor. xvi Stewart & C. W. T. xvi Williams & Co., H. xvi | Valves Jeans Brs. IV Robt. Mitchell Co. xvi Wall Paper A. H. Mitchell Co. ... I Albert Mfg. Co. ... xi Wire Lathing The H. Greenleaf Wire Company... 111 Window Cord. Samson Cordage Works. xiv |

| | | | | | |
|---|-------|------|--------------------------------------|-------|-----------|
| Stanstead granite paving blocks, 12 in. x 12 in. x 6 in. 2 1/2 in. per M. | 50 00 | | Hammer | 1 50 | 1 95 |
| Granite curbing stone, 6 in. x 20 in. per lineal foot... .. | 70 | | R. d Cross Brand | 2 00 | 2 05 |
| Buckton Olive Freest me. | 85 | 65 | Anchor | 2 05 | 2 05 |
| Olive Sandstone (Indian town, N.B.) | 80 | 70 | Waterloo | 2 05 | 2 25 |
| Brown (Sackville, N.B.) | 80 | 70 | Raevel's 395 lb. blk. | 2 40 | 2 40 |
| Moat red sandstone, per cu. ft. | 80 | 80 | Levie Bros. | 2 55 | 2 55 |
| Black Parture buff stone, per cu. ft. | 80 | 80 | Gorman— | | |
| Nova Scotia blue grey, per cu. ft. | 65 | 65 | Offerbacher Brand | 1 90 | 2 00 |
| Courser, 4 in. to 5 in. bed, f. o. b., St. Mary's, per cord... .. | 4 00 | 00 | Allen's | 3 00 | 3 15 |
| Footing, 2 1/2 to 3 in. wide, 6 in. thick, per running foot... .. | 7 | | Karlstadt | 2 85 | 3 05 |
| Bridge Stone, 10 to 13 in. thick, f. o. b. St. Mary's, per cord... .. | 6 00 | 9 00 | Canadian— | | |
| Granite (Laurien Pink) Ashlar, 6 in. to 2 in., rise 9 in., per ft. Dimension Stock Granite, (Laurien Pink) for building purposes, per cu. ft., f. o. b. quarries Do. for polishing purposes, up to 2 tons weight, per cubic foot... .. | 40 | 70 | Star Brand | 2 10 | 2 50 |
| | | | Heaver Brand | 2 00 | 2 40 |
| | | | Ensign | 1 85 | 2 00 |
| | | | Citadel | 2 00 | |
| | | | Trowel | | 1 75 1 85 |
| | | | Samson Brand | 2 00 | |
| | | | M. gret | 1 00 | |
| | | | Menarch | 2 10 | |
| | | | American— | | |
| | | | Alpha Brand | 2 00 | 2 25 |
| | | | Omega, in blk, 3 1/2 lbs. | 2 00 | 2 30 |
| | | | " cotton sacks, 250 net | 2 00 | 2 55 |
| | | | " apex bag | 2 20 | 2 30 |
| | | | Dago extra | | 4 00 |
| | | | Keene's Superfine "White" | 10 00 | 12 00 |
| | | | Keene's Cause "White" | 8 00 | 8 50 |
| | | | Fire Bricks, Newcastle, per M | 27 00 | 32 00 |
| | | | " Scotch | 25 00 | 33 00 |
| | | | Lime, 100 lbs., Grey | 30 | |
| | | | " " White | 30 | |
| | | | Plaster, Calcined, N. H. | 2 00 | |
| | | | " " N. S. | 2 00 | 1 60 |
| | | | Hair, Plasterers', per bag | 50 | 1 00 |

CREDIT VALLEY STONE. F.O.B. QUARRIES.

| | |
|---------------------------------------|------|
| Rubble, per ton | 50 |
| Brown Coursing, up to 10 per sq. yard | 2 00 |
| Brown Dimension, per cu. ft. | 65 |
| Grey Coursing, per sq. yard | 1 25 |
| Grey Dimension, per cu. ft. | 45 |

STATE. Toronto, Montreal

| | | |
|--------------------------------|-------|-----------|
| Roofing (7 square) red | 17 50 | 21 00 |
| " purple | 8 50 | 10 00 |
| " ding green | 8 50 | 7 00 8 00 |
| black | 7 50 | 6 50 |
| Terra Cotta Tile, per sq. | 20 00 | 25 00 |
| Ornamental Black Slate Roofing | 8 80 | 6 00 |

PORTLAND CEMENT.

| | | |
|--------------------------|------|------|
| English— | | |
| Brook's Shoobridge Brand | 2 10 | 2 20 |
| Excelsior Brand | 2 15 | |
| Belgian— | | |
| " Jossan Brand | 2 85 | 2 90 |
| " North's Condor | 2 95 | 3 10 |

ARCHITECTURAL VARNISHES. THE IMPERIAL VARNISH AND COLOR CO. LIMITED. (Highest grade)

| | | | | |
|--------------------------|--------|--------|--------|--------|
| Exterior weathering body | \$1 50 | \$1 50 | \$1 50 | \$1 50 |
| Exterior rubbing | 3 50 | 3 75 | 3 85 | 4 00 |
| Elasto-lin | 3 50 | 3 75 | 3 85 | 4 00 |
| Ivory Enameline | 3 00 | 3 25 | 3 35 | 3 50 |
| Crystaline | 4 50 | 4 75 | 4 85 | 5 00 |
| Yachtline | 3 50 | 3 75 | 3 85 | 4 00 |
| Architectural Coach | 3 50 | 3 75 | 3 85 | 4 00 |
| Granitine floor finish | 2 50 | 2 75 | 2 85 | 3 00 |
| Architectural Gilding | 2 00 | 2 25 | 2 35 | 2 50 |

Cans. free.

| | | | | | |
|--------------|---------------|---------------|---------------|---------------|---------------|
| 5 gal. cans. | 10 gal. cans. | 15 gal. cans. | 20 gal. cans. | 25 gal. cans. | 30 gal. cans. |
| Per gal. | Per gal. | Per gal. | Per gal. | Per gal. | Per gal. |