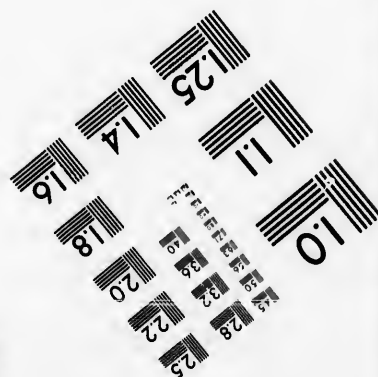
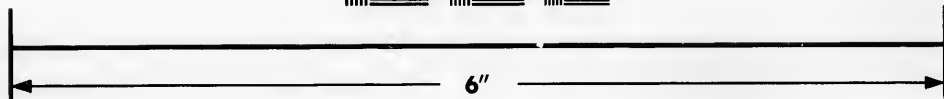
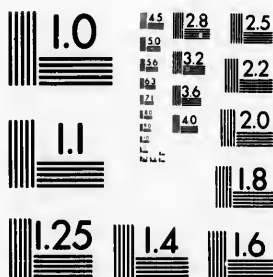


**IMAGE EVALUATION
TEST TARGET (MT-3)**



**Photographic
Sciences
Corporation**

23 WEST MAIN STREET
WEBSTER, N.Y. 14580
(716) 872-4503

**CIHM
Microfiche
Series
(Monographs)**

**ICMH
Collection de
microfiches
(monographies)**



Canadian Institute for Historical Microreproductions / Institut canadien de microreproductions historiques

© 1992

Technical and Bibliographic Notes / Notes techniques et bibliographiques

The Institute has attempted to obtain the best original copy available for filming. Features of this copy which may be bibliographically unique, which may alter any of the images in the reproduction, or which may significantly change the usual method of filming, are checked below.

L'Institut a microfilmé la meilleur exemplaire qu'il lui a été possible de se procurer. Les détails de cet exemplaire qui sont peut-être uniques du point de vue bibliographique, qui peuvent modifier une image reproduite, ou qui peuvent exiger une modification dans la méthode normale de filmage sont indiqués ci-dessous.

- Coloured covers/
Couverture de couleur
- Covers damaged/
Couverture endommagée
- Covers restored and/or laminated/
Couverture restaurée et/ou pelliculée
- Cover title missing/
Le titre de couverture manque
- Coloured maps/
Cartes géographiques en couleur
- Coloured ink (i.e. other than blue or black)/
Encre de couleur (i.e. autre que bleue ou noire)
- Coloured plates and/or illustrations/
Planches et/ou illustrations en couleur
- Bound with other material/
Relié avec d'autres documents
- Tight binding may cause shadows or distortion along interior margin/
La reliure serrée peut causer de l'ombre ou de la distorsion le long de la marge intérieure
- Blank leaves added during restoration may appear within the text. Whenever possible, these have been omitted from filming/
Il se peut que certaines pages blanches ajoutées lors d'une restauration apparaissent dans le texte, mais, lorsque cela était possible, ces pages n'ont pas été filmées.
- Additional comments:/
Commentaires supplémentaires:

- Coloured pages/
Pages de couleur
- Pages damaged/
Pages endommagées
- Pages restored and/or laminated/
Pages restaurées et/ou pelliculées
- Pages discoloured, stained or foxed/
Pages décolorées, tachetées ou piquées
- Pages detached/
Pages détachées
- Showthrough/
Transparence
- Quality of print varies/
Qualité inégale de l'impression
- Continuous pagination/
Pagination continue
- Includes index(es)/
Comprend un (des) index
- Title on header taken from:/
Le titre de l'en-tête provient:
- Title page of issue/
Page de titre de la livraison
- Caption of issue/
Titre de départ de la livraison
- Masthead/
Générique (périodiques) de la livraison

This item is filmed at the reduction ratio checked below/
Ce document est filmé au taux de réduction indiqué ci-dessous.

10X	12X	14X	16X	18X	20X	22X	24X	26X	28X	30X	32X
						✓					

The copy filmed here has been reproduced thanks to the generosity of:

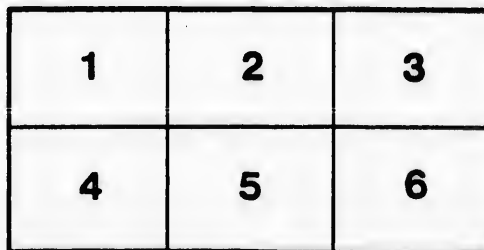
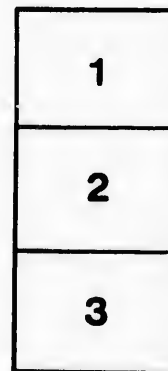
D.B. Weldon Library
University of Western Ontario

The images appearing here are the best quality possible considering the condition and legibility of the original copy and in keeping with the filming contract specifications.

Original copies in printed paper covers are filmed beginning with the front cover and ending on the last page with a printed or illustrated impression, or the back cover when appropriate. All other original copies are filmed beginning on the first page with a printed or illustrated impression, and ending on the last page with a printed or illustrated impression.

The last recorded frame on each microfiche shall contain the symbol \rightarrow (meaning "CONTINUED"), or the symbol ∇ (meaning "END"), whichever applies.

Maps, plates, charts, etc., may be filmed at different reduction ratios. Those too large to be entirely included in one exposure are filmed beginning in the upper left hand corner, left to right and top to bottom, as many frames as required. The following diagrams illustrate the method:



L'exemplaire filmé fut reproduit grâce à la générosité de:

D.B. Weldon Library
University of Western Ontario

Les images suivantes ont été reproduites avec le plus grand soin, compte tenu de la condition et de la netteté de l'exemplaire filmé, et en conformité avec les conditions du contrat de filmage.

Les exemplaires originaux dont la couverture en papier est imprimée sont filmés en commençant par le premier plat et en terminant soit par la dernière page qui comporte une empreinte d'impression ou d'illustration, soit par le second plat, selon le cas. Tous les autres exemplaires originaux sont filmés en commençant par la première page qui comporte une empreinte d'impression ou d'illustration et en terminant par la dernière page qui comporte une telle empreinte.

Un des symboles suivants apparaîtra sur la dernière image de chaque microfiche, selon le cas: le symbole \rightarrow signifie "A SUIVRE", le symbole ∇ signifie "FIN".

Les cartes, planches, tableaux, etc., peuvent être filmés à des taux de réduction différents. Lorsque le document est trop grand pour être reproduit en un seul cliché, il est filmé à partir de l'angle supérieur gauche, de gauche à droite, et de haut en bas, en prenant le nombre d'images nécessaire. Les diagrammes suivants illustrent la méthode.

DEDICATION



SERVICES

1896.

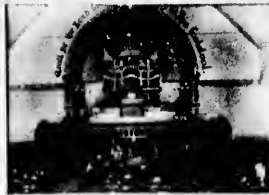


Our Examiners



1892

1895



Dundas · St. · Centre · Methodist · Church

LONDON.

OFFICIAL PROGRAMME

... IN CONNECTION WITH ...



DEDICATION

SERVICES....

BEGINNING

SABBATH MORNING.

MAY 24TH, 1896.

REV. E. B. LANCELEY, PASTOR.

WM BOWMAN,
CHAIRMAN BUILDING COMMITTEE.

C. J. BEAL,
RECORDING STEWARD.

G. W. KING, ARCHITECT.

The Trustee and Quarterly Official Boards.



TRUSTEE BOARD.

WM. BOWMAN.	C. J. BEAL.	R. LEWIS.	I. WEBSTER.
F. COOPER.	J. G. SHUFF.	G. GLASS.	
J. H. GLASS.	H. ASHLANT.	T. B. ESCOTT.	W. H. WORTMAN.
J. F. KERN.	A. KEENLEYSIDE.	J. FITZGERALD.	
WM. YATES.	J. D. KEENLEYSIDE.	JAS. H. BOWMAN.	WM. HEAMAN.
A. BRADFORD.		WM. LEWIS.	

QUARTERLY OFFICIAL BOARD.

REV. E. B. LANCELEY, <i>Pastor.</i>	REV. H. J. UREN, <i>Assistant Pastor.</i>		
REV. J. G. LAIRD.	REV. G. BROWN.	REV. D. RYAN.	REV. T. NATTRASS.
REV. W. WILLIMOTT.		REV. E. HOLMES.	

Superannuated Ministers.

REV. J. C. ANTLIFF, D.D., *Theological Tutor, Wesleyan Theo. College, Montreal.*

WM. BOWMAN.	T. McMULLEN.	J. SHANNON.	W. S. CASE.
A. CALLENDER.	J. H. BOWMAN.	J. H. GLASS.	I. WEBSTER.
I. M. MAVEILL.	D. A. McDERMID.	R. HOBBS.	DR. ZIEGLER.
COL. LEWIS.	J. A. NELLES.	W. H. WORTMAN.	G. GLASS.
F. J. DARCH.	A. N. UDY.	J. G. SHUFF.	J. GREENAWAY.
H. ASHLANT.	W. YATES.	T. COWLEY.	A. KEENLEYSIDE.
J. D. KEENLEYSIDE.	J. F. KERN.	J. H. TENNANT.	C. J. BEAL.
T. B. ESCOTT.	FRANK COOPER.	JOHN STOCK.	
MRS. ANDERSON.	MRS. CRAWFORD.	MRS. McDERMID.	
MRS. McMECHAN.	MISS WEBSTER.	MISS SCANDRETT.	

SABBATH, MAY 24TH.



7 A.M.—PRAYER AND FELLOWSHIP SERVICE.

REV. E. B. LANCELEY, PASTOR,

Appointed June, 1894.

11:00 A.M.—REV. WILLIAM WILLIAMS, D.D.,

*President of the Conference, will preach and
conduct the Dedication Service.*

MUSICAL SERVICE:

ANTHEM—"Awake, thou that Sleepest," - *F. C. Maker*
SOLO—"Fear not ye, O Israel," - *Dudley Buck*
DUET—"Peace to this Dwelling," - *A. M. Smith*

3:30 P.M.—REV. WILLIAM BRIGGS, D.D., TORONTO,

The First Pastor, appointed June, 1870.

MUSICAL SERVICE:

SOLO AND CHORUS—"See now the altar," - *J. Faure*
QUARTETTE—"Jesu, Lover of my Soul," - *Williams*
SOLO—"O that thou hadst hearkened to my commandments," *Sullivan*

7:00 P.M.—REV. E. B. RYCKMAN, D.D., KINGSTON,

Pastor from June, 1883, to June, 1886.

MUSICAL SERVICE:

ANTHEM—"Praise the Lord, O my soul," - *Michael Watson*
DUET—"Tarry with me," - *Nicolai*
QUARTETTE—"Hark, hark, my soul," - *Nessler-Holden*

Report of Trustees.



THE Trustees very much appreciate the liberality and kindness of the members and friends who have so materially aided in the work of building this House, and to each and all they now publicly acknowledge their indebtedness.

A pardonable pride is theirs, in being permitted to provide such a beautiful edifice — the compensation for all the labor of building will be that you, your children, and the generations after them, may be blessed in the privilege of worshipping therein our

FATHER AND GOD,

TO WHOSE GLORY AND PRAISE THIS HOUSE IS BUILT.

When every detail is complete, the cost (not including the site), will be about \$55,000.00.

The amount left from the insurance on the old Church, after paying the mortgage of same, was \$7,838.00. We have promises of \$22,500.00. This will leave us an indebtedness of \$25,000.00.

Monday, May 25th.



A GRAND
Sacred + Concert

WILL BE GIVEN IN THE CHURCH

BY THE CHOIR AND QUARTETTE



... ASSISTED BY ...

MRS. CLARA BARNES-HOLMES

BUFFALO, N. Y.

AND .

MR. GEORGE FOX

TORONTO.

VIOLINIST



Tickets, Twenty-Five Cents.

REPORT OF TRUSTEES (CONTINUED).

It is possible to carry this amount, but it is not desirable, and that for many reasons—if you so decide we must carry it—but we ask that you consider the matter, and as heretofore, generously assist in making it less. We would all be pleased to see it “free of debt,” and we think there are many present who will live to see such a grand fact.

Our present appeal is for a reduction in three years to \$15,000.00, this will require that the result of our four opening Sabbath services be \$10,000.00. We make this appeal, confident in your willingness to do it. Kindly think the matter over, and fill up the subscription card for such a sum as you think will answer the question: “How much do I owe to the Lord in this matter?”

The ever advancing growth of the several departments, that are to be found in a progressive church, has already emphasized the fact that our new building—so far as the Sabbath School part is concerned—would be improved if an annex was placed thereto, for the use of the primary classes, etc. This contemplated addition has had the thought and attention of the Building Committee and Trustees, and it is considered that, so soon as we are in a position to erect the Hall, it will be done.

It is not, we think, necessary at the present to place a given date when this will be reached, but the result of the appeal for \$10,000.00 being assured, it need be no matter of concern to all interested, but that the needed and desirable addition will be undertaken at the earliest possible time that the Trustees feel justified in the undertaking.



SABBATH, MAY. 31ST.



11.00 A.M.—REV. W. R. PARKER, D.D., TORONTO,

Pastor of Church from June, 1874, to June, 1877.

MUSICAL SERVICE:

SOLO AND CHORUS—"If I go not away," *A. Caldicott*

SOLO—"O trusting heart," *J. S. Bach*

QUARTETTE—"Come unto me," *Barri*

7.00 P.M.—REV. J. S. ROSS, D.D., BEANTFORD,

Pastor of Church from June, 1880, to June, 1883.

MUSICAL SERVICE:

CHORUS—"Unto Thee, O Lord, do we give thanks," *Michael Watson*

DUET—"I will magnify Thee, O Lord," *Mosenthal*

QUARTETTE—"O Lord most merciful," *Concone*

**From June, 1877, to June, 1880,
the late Rev. G. N. A. F. T. Dickson, was pastor.
After 36 years of very faithful ministerial labors, God called him to
his reward.**

Historical Sketch.



THE Corner Stone of Dundas Centre Methodist Church was laid by Rev. Wm. M. Punshon, D.D., in the spring of 1869. In June, 1870, the Rev. William Briggs, who for two years previous was the junior minister of North Street Church (now First Methodist Church), was appointed superintendent of Dundas Centre. In the minutes of Conference for 1871, we have the record of the first year's work of this church.

We have furnished a summary of the growth in membership, and missionary contributions, from that date to the present.

In 1876, the Board, with characteristic zeal, planted a cause in East London (now Centennial Church), which has become one of the important charges in the city.

In 1895, another new church was built on Hill Street, at a cost of \$2,500.00, which remains a Mission of Dundas Centre, but under the fostering care of Rev. H. J. Uren, junior pastor. It is rapidly growing, so that we are anticipating for it a position of independence before many years have passed away.

SABBATH, JUNE 7TH.



11:00 A.M.—REV. ALEX. LANGFORD, ORANGEVILLE,

Pastor from June, 1871, to June, 1874.

MUSICAL SERVICE:

ANTHEM—"The King of Love my Shepherd is," - *Charles Gounod*

SOLO—"Prayer," - *F. Hiller*

DUET—"There was joy in Heaven," - *Henry Smart*

7:00 P.M.—REV. A. C. COURTICE, TORONTO,

Editor "Christian Guardian,"

Pastor from June, 1889, to June, 1892.

MUSICAL SERVICE:

ANTHEM—"Hallelujah, Christ is Risen," - *R. Orlando Morgan*

QUARTETTE—"Guide me, O thou great Jehovah," *E. Meyer-Helmund*

DUET—"Saviour lead me lest I stray," - *Davis*

SUMMARY OF GROWTH.



Year.	Membership.	Missionary Contributions.
1871	130	\$ 314 00
1872	141	333 00
1873	178	438 00
1874	230	576 00
1875	333	402 00
1876	364	392 00
1877	396	493 00
1878	256	509 00
1879	216	312 00
1880	230	403 00
1881	235	419 00
1882	250	526 00
1883	260	375 00
1884	258	450 00
1885	265	486 00
1886	405	553 00
1887	378	781 00
1888	437	865 00
1889	558	927 00
1890	561	986 00
1891	565	1027 00
1892	465	946 00
1893	487	1314 00
1894	537	1428 00
1895	611	1436 00
1896	648	1440 00

Church burned,
February 14.

SABBATH, JUNE 14TH.



11:00 A.M.—REV. J. COOPER ANTLIFF, D.D., MONTEAL,

*Wesleyan Theological College,
Pastor from June, 1892, to June, 1894*

MUSICAL SERVICE:

ANTHEM—"Hear, O Lord," - - - *Michael Watson*
TRIO—"Praise ye the Lord," - - - *A. Giebel*
SOLO AND QUARTETTE—"Even Me," - - - *J. C. Warren*

7:00 P.M.—REV. J. V. SMITH, D.D., HAMILTON,

*Centenary Church,
Pastor from June, 1886, to June, 1889.*

MUSICAL SERVICE:


SOLO AND CHORUS—"O Holy Night," - - - *Adolphe Adam*
SOLO—"Light in Darkness," - - - *F. H. Cowen*
QUARTETTE—"Great God to Thee my evening song,"
Rheinberger-Shelley

3:00 P.M.—**A CHILDREN'S MASS MEETING.**


Composed of Scholars from Dundas Centre and Hill Street Mission
Sabbath Schools, will be held.

ADDRESSES WILL BE GIVEN BY REV. DRS. ANTLIFF AND SMITH.

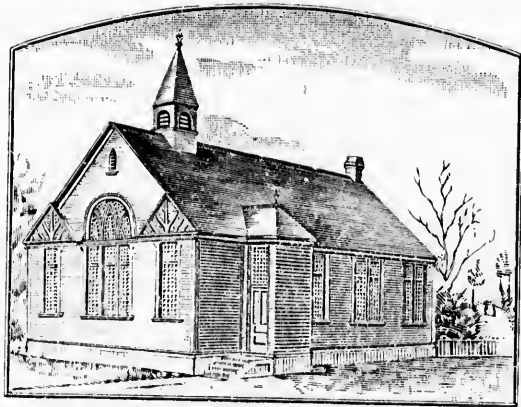
1



ADVERTISER PRINTING COMPANY,
LONDON, ONTARIO.







HILL STREET MISSION.



