

**CIHM  
Microfiche  
Series  
(Monographs)**

**ICMH  
Collection de  
microfiches  
(monographies)**



**Canadian Institute for Historical Microreproductions / Institut canadien de microreproductions historiques**

**© 1998**



The copy filmed here has been reproduced thanks to the generosity of:

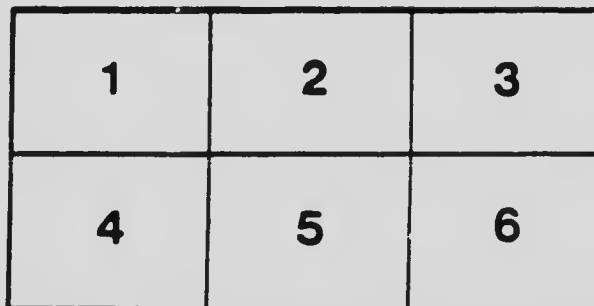
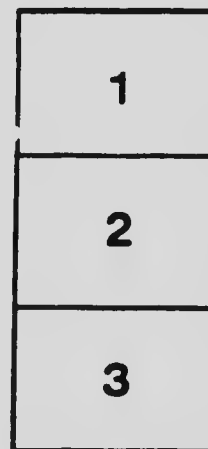
British Columbia Archives and Records Service.

The images appearing here are the best quality possible considering the condition and legibility of the original copy and in keeping with the filming contract specifications.

Original copies in printed paper covers are filmed beginning with the front cover and ending on the last page with a printed or illustrated impression, or the back cover when appropriate. All other original copies are filmed beginning on the first page with a printed or illustrated impression, and ending on the last page with a printed or illustrated impression.

The last recorded frame on each microfiche shall contain the symbol  $\rightarrow$  (meaning "CONTINUED"), or the symbol  $\nabla$  (meaning "END"), whichever applies.

Maps, plates, charts, etc., may be filmed at different reduction ratios. Those too large to be entirely included in one exposure are filmed beginning in the upper left hand corner, left to right and top to bottom, as many frames as required. The following diagrams illustrate the method:



L'exemplaire filmé fut reproduit grâce à la générosité de:

British Columbia Archives and Records Service.

Les images suivantes ont été reproduites avec le plus grand soin, compte tenu de la condition et de la netteté de l'exemplaire filmé, et en conformité avec les conditions du contrat de filmage.

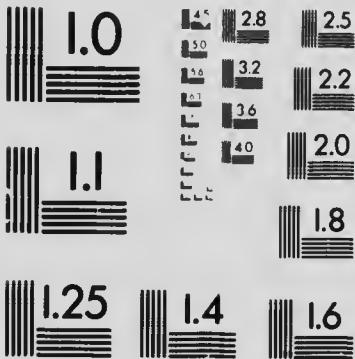
Les exemplaires originaux dont la couverture en papier est imprimée sont filmés en commençant par le premier plat et en terminant soit par la dernière page qui comporte une empreinte d'impression ou d'illustration, soit par le second plat, selon le cas. Tous les autres exemplaires originaux sont filmés en commençant par la première page qui comporte une empreinte d'impression ou d'illustration et en terminant par la dernière page qui comporte une telle empreinte.

Un des symboles suivants apparaître sur la dernière image de chaque microfiche, selon le cas: le symbole  $\rightarrow$  signifie "A SUIVRE", le symbole  $\nabla$  signifie "FIN".

Les cartes, planches, tableaux, etc., peuvent être filmés à des taux de réduction différents. Lorsque le document est trop grand pour être reproduit en un seul cliché, il est filmé à partir de l'angle supérieur gauche, de gauche à droite, et de haut en bas, en prenant le nombre d'images nécessaire. Les diagrammes suivants illustrent la méthode.

# MICROCOPY RESOLUTION TEST CHART

(ANSI and ISO TEST CHART No. 2)



**APPLIED IMAGE Inc**

1653 East Main Street  
Rochester, New York 14609 USA  
(716) 482 - 0300 - Phone  
(716) 288 - 5989 - Fax

# MOTOR LOGS

— ON —

“THE ISLAND OF

1,000 MILES OF

WONDERLAND”



ISSUED WITH THE COMPLIMENTS OF  
VICTORIA AND ISLAND DEVELOPMENT ASSOCIATION  
AND  
VICTORIA AUTOMOBILE CLUB  
VICTORIA, B. C.

PROVINCIAL ARCHIVES OF B. C.

NWp  
971.42  
V645h

# Handy Logs of Famous Trips

On "The Island of a Thousand Miles  
of Wonderland"

## FOREWORD

IN PRESENTING these logs and maps for the benefit of touring visitors, emphasis is laid on the fact that no attempt has been made to cover anything like all of the desirable drives in and around the City of Victoria. With the use of the "Visitors' Handy Guide," available at the Information Bureau, the tourist will be enabled to lay out his own programme whilst in Victoria, and it is urged that plenty of time be allowed to enjoy the distinctive charm of the Capital City of the Province of British Columbia and its surroundings.

### DISTANCES FROM VICTORIA—UP ISLAND

To—	Miles	To—	Miles
Malahat Summit .....	19.3	Parkesville .....	100.0
Shawnigan Lake .....	30.0	Cameron Lake .....	108.9
Cowichan Bay .....	36.0	Alberni .....	131.4
Duncan .....	41.4	Great Central Lake .....	143.5
Cowichan Lake .....	61.2	Courtenay .....	146.7
Ladysmith .....	61.4	Campbell River .....	176.0
Nanaimo .....	77.4	Forbes Landing .....	184.0

### SAANICH PENINSULA

To—	Miles	To—	Miles
The Observatory .....	9.4	Sidney .....	17.8
Brentwood (including Observatory) .....	16.0	Deep Cove .....	21.4
Cordova Bay .....	8.0	Cadboro Bay .....	5.0

### OTHER NEARBY POINTS OF INTEREST

To—	Miles	To—	Miles
Colwood .....	7.3	Sooke Harbor .....	22.0
Luxton .....	10.2	Jordan River .....	42.2

# Up-Island Drives

## VICTORIA TO CAMPBELL RIVER, VIA THE FAMOUS MALAHAT

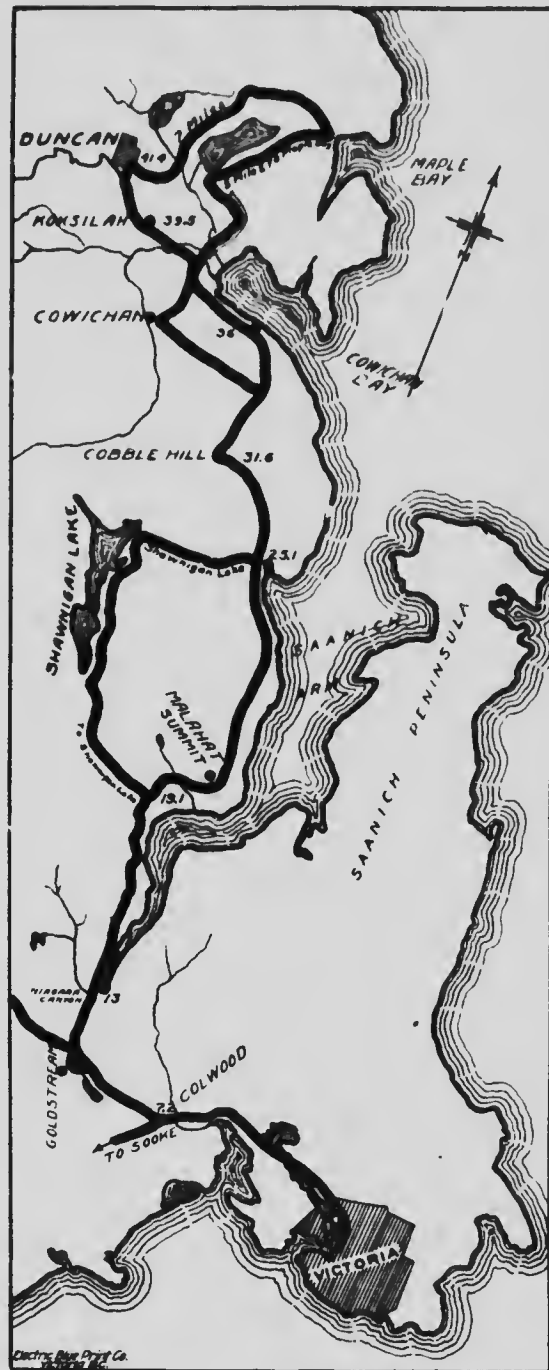
Leaving office of Victoria and Island Development Association, corner Humboldt and Gordon Streets. Humboldt to Government, proceed north on Government Street.

### Miles

- 1.02 Turn left in Gorge Road.
- 2.7 Pass Gorge Park on left.
- 2.09 Straight ahead. (Left fork to Gorge Bridge; right fork to Saanich Peninsula).
- 3.0 Left fork over Island Highway.
- 4.0 Cross Gorge Bridge.
- 4.1 Turn right.
- 4.4 Cross under railway viaduct.
- 5.6 Straight ahead (right to Burnside Road).
- 5.9 Esquimalt Harbor and Naval Station on left.
- 7.2 Turn right at sign over Victoria-Island Highway (straight ahead to Sooke).
- 8.5 Cross railroad.
- 9.8 Pass Langford Road.
- 11.0 Right fork over Island Highway (left to Goldstream).\*
- 13.0 Niagara Canyon.
- 19.1 Left fork to Shawnigan Lake.\*
- 19.3 Summit Malahat Mountain. Elevation 1,250 feet.
- 19.4 Straight ahead (right fork to Saanich Inlet).
- 20.1 Down grade.
- 21.9 Right fork (left fork scenic loop to summit of mountain).
- 25.1 Mill Bay.
- 28.8 Right fork (left fork to Shawnigan Lake).\*
- 28.8 Left fork (right fork to Malahat Beach).
- 29.4 Left jog in road.
- 31.6 Cobble Hill. Straight ahead.
- 33.7 Right fork (left fork old road).
- 34.4 Straight ahead.
- 34.8 Straight ahead.
- 35.4 Down steep grade. **CAUTION** — Proceed with care.
- 35.5 Right fork at foot of hill and follow shore road.
- 36.0 Cowichan Bay.\*
- 37.6 Cross river.
- 37.9 Turn left at sign (right fork to Duncan).
- 38.9 Cross bridge.
- 39.3 Right fork.
- 39.5 Koksilah.

\* Denotes Location of Hotels

Victoria to Duncan.—(41 Miles.)



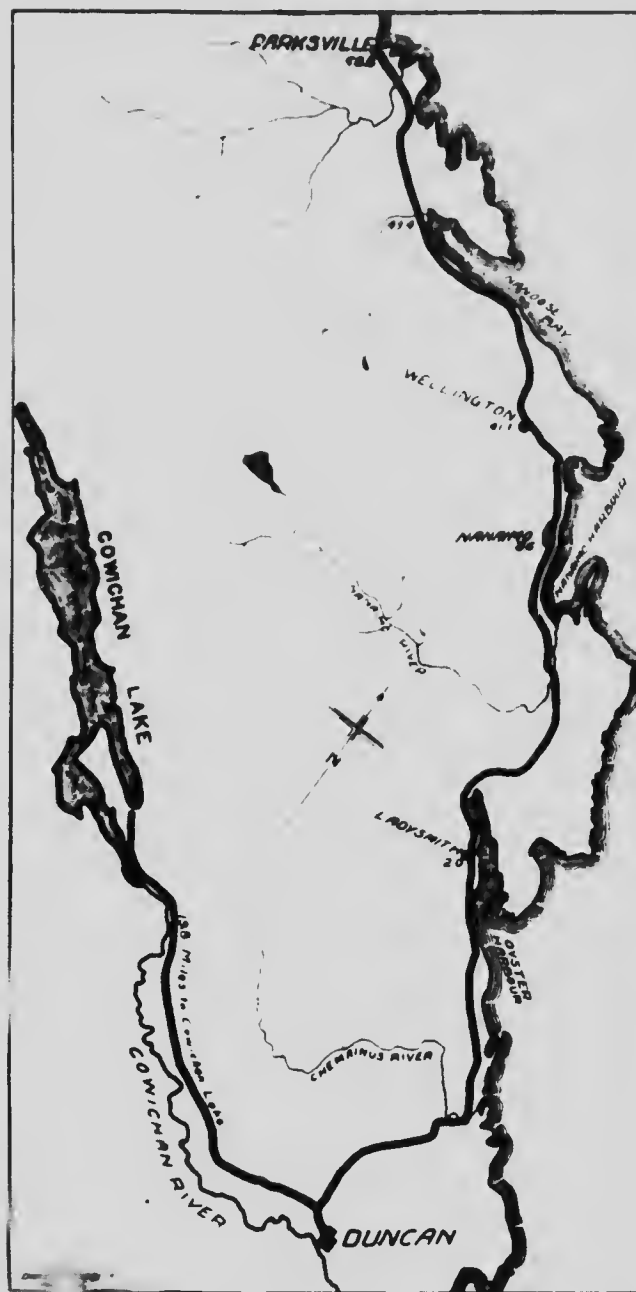
**Victoria to Campbell River, via  
The Famous Malahat**

(Continued)

- 40.0 Cross railroad.  
 41.0 Turn right and cross railroad.  
 41.4 **DUNCAN**—Cross track.\*  
 41.5 Veer to right over highway.  
 41.2 Left and fifty feet farther take right fork  
 at sign.  
 43.3 Right fork (left fork to Cowichan Lake,  
 19.8\*).  
 44.0 Cross-roads; straight ahead.  
 44.8 Cross-roads; straight ahead.  
 46.7 Cross railroad.  
 47.8 Straight ahead.  
 49.4 **WESTHOLME**—Cross railroad.  
 49.6 Right fork.  
 50.3 Cross railroad.  
 50.7 Left fork.  
 51.0 Cross Chemainus River.  
 53.6 Chemainus.\*  
 54.1 Pass Depot on left.  
 54.3 Straight ahead.  
 57.2 **SALTAIK STATION**—One-fourth mile  
 to left.  
 60.0 Cross railroad. **CAUTION**—Slow down,  
 dangerous.  
 61.4 **LADYSMITH**.\* Straight through town.  
 62.4 Turn right and cross bridge. (Old road  
 on left.)  
 64.3 Right fork.  
 64.5 Left fork.  
 65.0 Turn right at sign (Left to South Well-  
 ington).  
 66.8 Left fork (Right to Yellow Point).  
 68.2 Left fork.  
 69.1 Straight ahead.  
 71.8 Straight ahead.  
 72.2 Round sharp curve. **CAUTION**—Proceed  
 carefully.  
 72.3 Cross bridge over Nanaimo River and  
 straight ahead.  
 74.7 Under railroad viaduct.  
 75.0 Right fork.  
 76.9 Turn left at end of pavement one block,  
 then right.  
 77.3 Turn right.  
 77.4 **NANAIMO**.\* Post Office on the right.  
 77.8 Straight ahead, following sign.  
 78.1 Cross railroad.  
 78.2 Right fork.  
 79.7 Right fork.  
 80.7 Straight ahead.  
 81.8 Straight ahead.  
 82.2 Turn sharply to right.  
 82.4 Turn right.  
 82.5 **WELLINGTON**—turn left.  
 82.6 Cross railroad and bear right.  
 83.3 Cross railroad.  
 83.4 Turn left, passing Somerset Hotel.  
 84.4 Turn right and follow good, wide gravel  
 road.  
 90.8 **NANOOSE BAY**.  
 92.9 Left fork.  
 96.9 Turn right and cross railroad.  
 98.9 Cross bridge over Englishman River.

**DUNCAN TO PARKSVILLE**

(89 Miles)





Victoria to Campbell River, Via  
The Famous Malahat

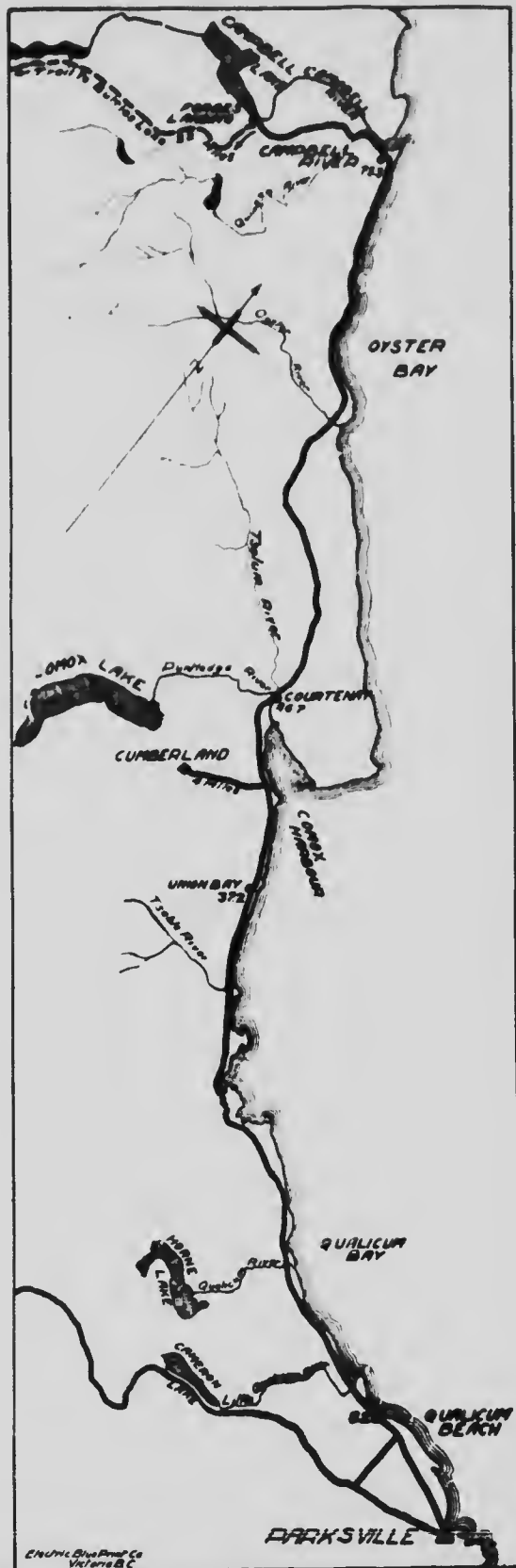
(Continued)

- 100.0 **PARKSVILLE.\***  
 100.2 Turn right at junction of Island and Canadian Highways. (Left fork over Canadian Highway to Cameron Lake and Alberni).  
 102.4 Take right fork.  
 103.4 Cross bridge  
 104.6 Left fork.  
 108.2 **QUALICUM BEACH**—Continue along the beach drive.  
 110.7 Cross Qualicum River.  
 116.8 Straight ahead.  
 137.2 **UNION BAY\***—Straight through town.  
 139.2 Cross railroad. **CAUTION**—Dangerous crossing.  
 142.7 Straight ahead. (Left fork to Cumberland, four miles.)  
 144.5 Straight ahead.  
 146.7 **COURTENAY\***—Turn right at sign.  
 146.8 Cross bridge over Puntledge River.  
 146.9 Turn left.  
 147.5 Turn sharply to right for one block.  
 147.6 Turn left (Right fork to Comox).  
 151.1 Straight ahead.  
 152.4 Straight ahead.  
 153.6 Straight ahead.  
 155.0 Left fork.  
 162.4 Cross Oyster River.  
 173.3 Town of **CAMPBELL RIVER.\*** Terminus of Island Highway. Continue straight ahead to river.  
 174.2 Up sharp grade.  
 176. Right fork. Ahead to river.  
 184. Forbes Landing.\*

**FIRES**

**Caution to Campers**

As the camp locations provided by the Government are within or close to valuable timber areas, particular care should be exercised by the camper to see that any fires he is responsible for are kept from spreading, and that the same are thoroughly extinguished before leaving the ground.



Parksville to Campbell River.—(75 Miles.)

## Marine Drive

(Continued)

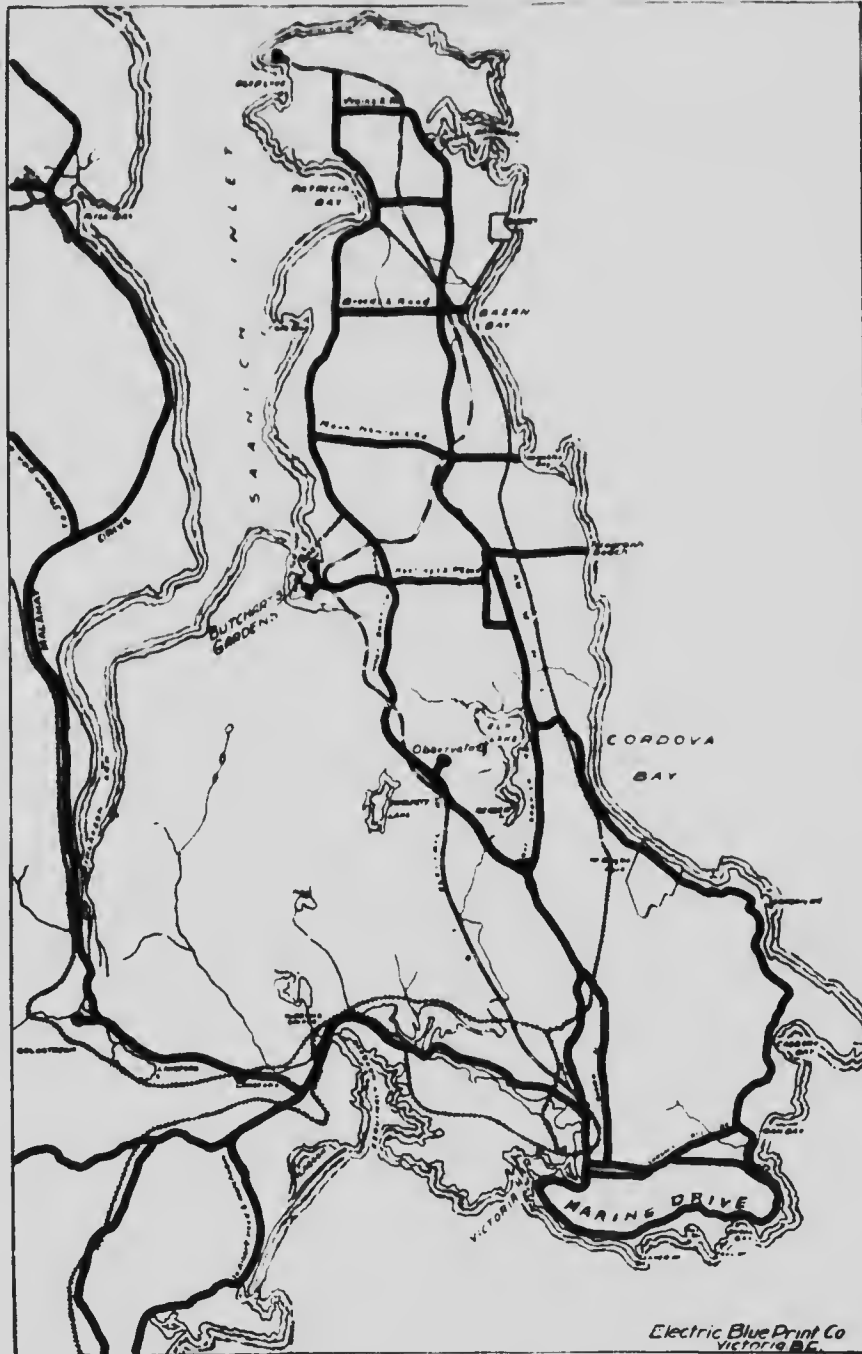
Follow shoreline to Oak Bay, the sea road (Beach Drive) still being pursued, past the Oak Bay Hotel, skirting Willows Beach and driving straight forward to junction of Beach Drive and Shore Road, following the latter through beautiful Uplands, passing Royal Victoria Yacht Club. Returning back to city, past Old Men's Home, along Fort Street to Government.



NOTE.—(Continuing Marine Drive.) Turn right onto Cadboro Bay Road, straight ahead to through Uplands to Uplands gates on right, northern gates on Cadboro Bay Road, along Cadboro Bay Road to Maynard Street, turn left, short distance to Wilson Street, turn right, about half mile to Arbutus Road, continue about seven miles along shore road, cross railroad track, up a hill (dangerous, drive slowly), to Elk Lake on East Saanich Road. Turn right, continue as per log for Saanich Drive.

## SAANICH PENINSULA DRIVES

Including Marine Drive about Victoria, Brentwood, Butchart's Gardens etc.



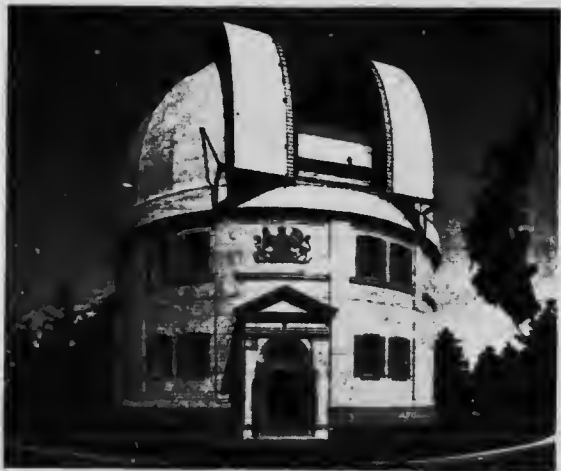
Electric Blue Print Co  
Victoria B.C.

**DOMINION ASTROPHYSICAL  
OBSERVATORY and BRENTWOOD**

(33 Miles)

Miles

- 0.0 Start—Parliament Buildings, Government and Belleville Streets. Proceed north in Government Street.
- 0.3 Turn right in Fort Street.
- 0.7 Turn left in Quadra Street.
- 0.9 Veer slightly to left, passing stone church on right.
- 2.8 Straight ahead.
- 3.5 Straight ahead, passing Lake Hill Post Office on left.
- 5.8 **ROYAL OAK**—Straight ahead.\* (For East Saanich take right fork).
- 6.1 Cross railroad and proceed straight ahead.
- 6.9 Left fork.
- 7.2 Left fork. (Right fork is the old road).
- 7.4 Right fork at foot of grade.
- 8.0 Right fork and up winding grade
- 8.7 Elk Lake on right.
- 9.2 Prospect Lake on left.
- 9.4 **OBSERVATORY HILL** summit. Return down mountain road to forks at
- 10.8 Foot of mountain grade. Straight ahead.
- 11.4 **PROSPECT**—Straight ahead. (Left fork to Prospect Lake, one-half mile.)
- 12.6 Dominion Rifle Range on left in valley.
- 13.5 Right fork.



The Astrophysical Observatory

**Dominion Astro-Physical Observatory  
and Brentwood**

(Continued)

- 14.1 Straight ahead. (Turn left at sign reading "To Tod Inlet.")
- 15.3 Down steep grade.
- 15.4 Right fork to Brentwood.
- 15.5 Cross railroad. **CAUTION**—Dangerous crossing.
- 16.0 **BRENTWOOD.\* (Butchart's Gardens.)**  
Return over same road to
- 17.9 Left fork.
- 22.8 Right fork.
- 23.9 Right.
- 24.1 Left.
- 24.6 Straight ahead.
- 25.2 Straight ahead.
- 25.7 Left fork. End of loop around Observatory Hill.
- 26.8 Turn sharply to right off main road and Wilkinson Road.
- 27.7 Right fork.
- 27.8 Left fork.
- 28.0 Pass Provincial Jail on right.
- 28.3 **COLQUITZ**—Straight ahead.
- 29.2 Turn left over Burnside Road.
- 29.5 Straight ahead.
- 29.8 Straight ahead.
- 31.9 Straight ahead in Douglas Street.
- 32.4 Pass Dominion Government Drill Hall.
- 33.2 **END OF TOUR**—Home of the Victoria and Island Development Association, corner Humboldt and Gordon Streets.

\* Hotel.

**NOTE**

For information pertaining to various side trips, scenic attractions, camping sites, fishing, natural resources and industrial possibilities, call on the Secretaries of the Boards of Trade at **Duncan, Ladysmith, Nanaimo, Alberni, Courtenay, Sidney.** These gentlemen will be only too pleased to help you in any way with information.



# MOTOR DRIVES

IN AND ABOUT

## VICTORIA, B. C.

— AND TO —

CAMPBELL RIVER, PORT ALBERNI  
SPROAT AND GREAT CENTRAL LAKES

OVER THE FAMOUS

## MALAHAT DRIVE



ISSUED WITH THE COMPLIMENTS OF  
VICTORIA AND ISLAND DEVELOPMENT ASSOCIATION  
AND  
VICTORIA AUTOMOBILE CLUB  
VICTORIA, B. C.

