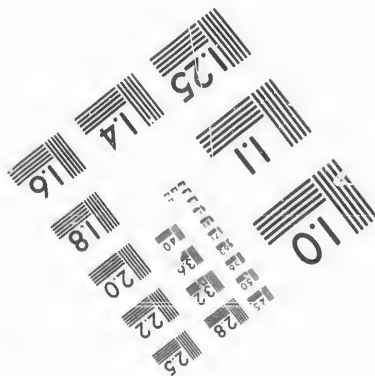
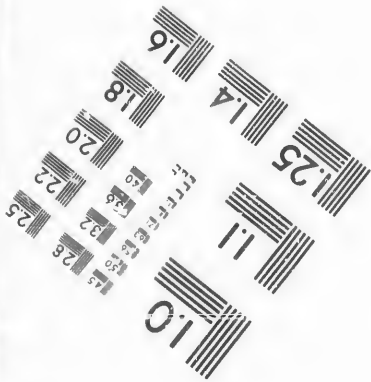
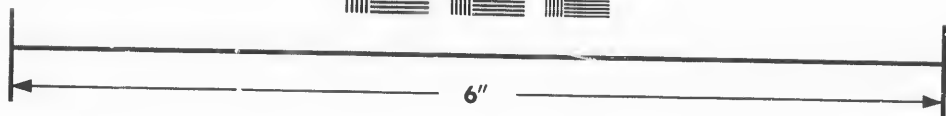
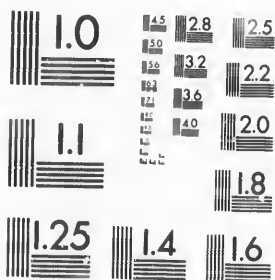


**IMAGE EVALUATION
TEST TARGET (MT-3)**



**Photographic
Sciences
Corporation**

23 WEST MAIN STREET
WEBSTER, N. Y. 14580
(716) 872-4503



**CIHM/ICMH
Microfiche
Series.**

**CIHM/ICMH
Collection de
microfiches.**



Canadian Institute for Historical Microreproductions / Institut canadien de microreproductions historiques



© 1986

Technical and Bibliographic Notes/Notes techniques et bibliographiques

The Institute has attempted to obtain the best original copy available for filming. Features of this copy which may be bibliographically unique, which may alter any of the images in the reproduction, or which may significantly change the usual method of filming, are checked below.

L'Institut a microfilmé le meilleur exemplaire qu'il lui a été possible de se procurer. Les détails de cet exemplaire qui sont peut-être uniques du point de vue bibliographique, qui peuvent modifier une image reproduite, ou qui peuvent exiger une modification dans la méthode normale de filmage sont indiqués ci-dessous.

- | | |
|--|--|
| <input type="checkbox"/> Coloured covers/
Couverture de couleur | <input type="checkbox"/> Coloured pages/
Pages de couleur |
| <input type="checkbox"/> Covers damaged/
Couverture endommagée | <input type="checkbox"/> Pages damaged/
Pages endommagées |
| <input type="checkbox"/> Covers restored and/or laminated/
Couverture restaurée et/ou pelliculée | <input type="checkbox"/> Pages restored and/or laminated/
Pages restaurées et/ou pelliculées |
| <input type="checkbox"/> Cover title missing/
Le titre de couverture manque | <input checked="" type="checkbox"/> Pages discoloured, stained or foxed/
Pages décolorées, tachetées ou piquées |
| <input type="checkbox"/> Coloured maps/
Cartes géographiques en couleur | <input checked="" type="checkbox"/> Pages detached/
Pages détachées |
| <input type="checkbox"/> Coloured ink (i.e. other than blue or black)/
Encre de couleur (i.e. autre que bleue ou noire) | <input checked="" type="checkbox"/> Showthrough/
Transparence |
| <input type="checkbox"/> Coloured plates and/or illustrations/
Planches et/ou illustrations en couleur | <input type="checkbox"/> Quality of print varies/
Qualité inégale de l'impression |
| <input type="checkbox"/> Bound with other material/
Relié avec d'autres documents | <input type="checkbox"/> Includes supplementary material/
Comprend du matériel supplémentaire |
| <input type="checkbox"/> Tight binding may cause shadows or distortion
along interior margin/
La reliure serrée peut causer de l'ombre ou de la
distorsion le long de la marge intérieure | <input type="checkbox"/> Only edition available/
Seule édition disponible |
| <input type="checkbox"/> Blank leaves added during restoration may
appear within the text. Whenever possible, these
have been omitted from filming/
Il se peut que certaines pages blanches ajoutées
lors d'une restauration apparaissent dans le texte,
mais, lorsque cela était possible, ces pages n'ont
pas été filmées. | <input type="checkbox"/> Pages wholly or partially obscured by errata
slips, tissues, etc., have been refilmed to
ensure the best possible image/
Les pages totalement ou partiellement
obscurcies par un feuillet d'errata, une pelure,
etc., ont été filmées à nouveau de façon à
obtenir la meilleure image possible. |
| <input type="checkbox"/> Additional comments:/
Commentaires supplémentaires: | |

This item is filmed at the reduction ratio checked below/
Ce document est filmé au taux de réduction indiqué ci-dessous.

10X	12X	14X	16X	18X	20X	22X	24X	26X	28X	30X	32X
						✓					

The copy filmed here has been reproduced thanks to the generosity of:

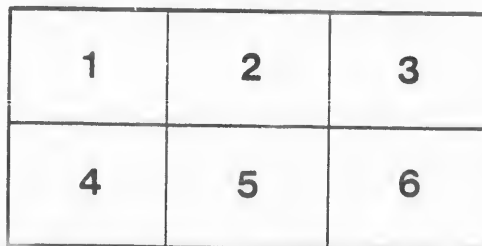
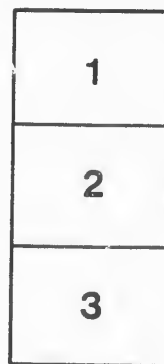
D. B. Weldon Library
University of Western Ontario
(Regional History Room)

The images appearing here are the best quality possible considering the condition and legibility of the original copy and in keeping with the filming contract specifications.

Original copies in printed paper covers are filmed beginning with the front cover and ending on the last page with a printed or illustrated impression, or the back cover when appropriate. All other original copies are filmed beginning on the first page with a printed or illustrated impression, and ending on the last page with a printed or illustrated impression.

The last recorded frame on each microfiche shall contain the symbol \rightarrow (meaning "CONTINUED"), or the symbol ∇ (meaning "END"), whichever applies.

Maps, plates, charts, etc., may be filmed at different reduction ratios. Those too large to be entirely included in one exposure are filmed beginning in the upper left hand corner, left to right and top to bottom, as many frames as required. The following diagrams illustrate the method:



L'exemplaire filmé fut reproduit grâce à la générosité de:

D. B. Weldon Library
University of Western Ontario
(Regional History Room)

Les images suivantes ont été reproduites avec le plus grand soin, compte tenu de la condition et de la netteté de l'exemplaire filmé, et en conformité avec les conditions du contrat de filmage.

Les exemplaires originaux dont la couverture en papier est imprimée sont filmés en commençant par le premier plat et en terminant soit par la dernière page qui comporte une empreinte d'impression ou d'illustration, soit par le second plat, selon le cas. Tous les autres exemplaires originaux sont filmés en commençant par la première page qui comporte une empreinte d'impression ou d'illustration et en terminant par la dernière page qui comporte une telle empreinte.

Un des symboles suivants apparaîtra sur la dernière image de chaque microfiche, selon le cas: le symbole \rightarrow signifie "A SUIVRE", le symbole ∇ signifie "FIN".

Les cartes, planches, tableaux, etc., peuvent être filmés à des taux de réduction différents. Lorsque le document est trop grand pour être reproduit en un seul cliché, il est filmé à partir de l'angle supérieur gauche, de gauche à droite, et de haut en bas, en prenant le nombre d'images nécessaire. Les diagrammes suivants illustrent la méthode.

errata
to

pelure,
n à

32X

THE CROWNING
OF MUSIC



GRAND
OPERA HOUSE,
LONDON, ONT.

SEASO

1899-1900.

G. WHITNEY
LESSEE
A. E. ROOTE
MANAGER.

Mark's Bros. Jan 15-17 / 1900

• SMITH BROS., •

TELEPHONE
838

LEADING PLUMBERS.

265 DUNDAS STREET, - LONDON, ONT.

Advertiser Job Dept.

WHERE PEOPLE CONGREGATE, THERE ADVERTISE.

† THE †
..PROGRAMME...

The primary idea of this Programme is, of course, to enlighten the audience as to the personnel of the artists taking part in the performances, incidentally to serve as a guide to the plot of the piece, and generally to give such information as will tend to the enjoyment of the auditor.

But there is a fund of information in the advertisements that may be seriously considered with profit.

The publishers are prepared to attend to all business in the way of general and special advertising.

Respectfully,

BELTON & ROOT,
Advertising Agents.

HARRY MCKENNA,

...DEALER IN...

CHOICE TOBACCONIST'S GOODS,

Always Open after the Opera.

Retail and Wholesale.

225 DUNDAS STREET.

Read and Reflect.

The management reserves the right to refuse admission to anyone.

DOORS open for matinees at 2 p. m. ; curtain rises at 2.30 p. m.
Evenings.—Doors open at 7.30, and curtain rises at 8.15 p. m. sharp.

Tickets can be reserved two days in advance without extra charge.
Office open from 9 a. m. to 5 p. m.

Seats can be secured by mail, telegraph or telephone. Telephone 732.

Seats ordered by Telephone or in Person, and not called for by 7.30 o'clock on the night of performance, will then be sold to avoid loss to the Theatre.

Physicians are requested to register at the Box Office, leaving seat number as this will enable Ushers to find them, if called for, without disturbing the audience.

Children in arms not admitted to evening performances. Children three years old or over, full price.

Patrons will confer a favor by reporting to the management any incivility or inattention on the part of the employees, and annoyances of any nature.

If the individual members of an audience would stop to think for just an instant, they would undoubtedly appreciate the fact that the habit of rising from their seat and leaving the theatre before the curtain falls, is a most annoying one, and one that should be stopped. We therefore beg our audiences to kindly remain in their seats until the close of the performance.

Carriages can be ordered at the Box Office or of the Chief Usher.

For all lost articles, apply at Box Office.

It is strange, but there is a class of people that seem to take an intense delight in bespattering the floor with tobacco juice, and in being boisterous and using profane language. These people should know at once that the courts authorize their immediate expulsion, should the management seem fit to exercise its rights.

Slater Bros

...TAILORS...

Telephone 844.

399 Richmond St., LONDON.

Grand Opera House

LONDON, ONT.

C. J. WHITNEY, Lessee.

SEASON 1899-1900.

A. E. ROOT, Manager.

PROGRAMME.

ONE WEEK, commencing Monday, January 15th,
Wednesday and Saturday Matinee.

MARKS BROS. COMPANY

Supporting the Joint Stars,

TOM MARKS AND MAY A. BELL.

New Plays.

New Specialties.

New Wardrobe and Scenery.

Continuous Performances.

PRICES: 10, 15 and 25 CENTS.

Programme continued on next page.

BELTON
AND
ROOT

Bill Posting, Distrib-
uting and General
Advertising Agents

Control all the Bill Boards and Dead Walls throughout the City. Population of City, 40,000. All orders for Bill Posting, Distributing, Card Tacking, and General Advertising for Western Ontario will receive prompt attention.

OFFICE:—BOX OFFICE OPERA HOUSE

The London Daily News has the largest sworn cir-

SMOKE THE 



VETERAN



10c. Cigar.

MANUFACTURED BY

W. C. ROSS, London.

PROGRAMME.

MONDAY NIGHT, JAN. 15.

“THE MAJOR’S BRIDE.”

CAST OF CHARACTERS.

Major O'Hara, retired officer of the American Army.....	TOM MARKS
Mons. Jules Beauchamp.....	Alex Marks
Capt. Henry Lafayette, army of France.....	W. A. Moriarity
Godfrey De Valliere.....	Chris. C. Allan
Servant.....	Ernest Mark
Dr. De Ceaux.....	Gordon McDowell
Officer.....	Joe Marks
Sergeant.....	W. Millard
Matilde De Valliere.....	Miss Alice Kemp
Elsie De Valliere.....	Miss Katherine Braham
Madam Du Bois.....	MISS MAY BELL

SYNOPSIS: Act I—De Valliere country residence near Bordeaux. The heir to \$500,000. Major O'Hara arrives. "I can't marry the man I do not love." Major proposes to Elsie. "I wish her every happiness." Arrival of Madam Du Bois. "Marguerite, she's a stunner." Act II—In the garden. The Major consents to take a lesson. The mother pleads for her noble boy. You dare not, for he is your son. Act III—A close call. Love rules the court. "I cannot curse you, for you are my mother." "I have faced death too often on the battlefield to be a coward now." The Major missed his third shot. "I will kill him." The duel. "Ready, one, two, three, Fire!" Act IV—Scene 1, Major indulges in poetry. "Say you'll be Mrs. O'Hara instead of Madam Du Bois." The O'Hara's are direct descendents of King of Cannought. The Major wounded. "Hold, let his life be my wedding present." "If ever ye spake a word against this 'ady I'll kill ye without warning."

Programme continued on next page.

Buy your DIAMONDS and WATCHES, at
WARD'S JEWELRY 374 Richmond Street.

For the People,
By the People,
And of the People,

...IS WHY THE...

STANLEY

HAS SPRUNG INTO SUCH POPULAR FAVOR.

A High-Grade
First-Class

PIANO

Without a Peer, Fully Guaranteed,
Made on Honor and Sold on Merit.

MORPHY'S JEWELLERY STORE, 178 Dundas Street.

JAS. E. KEENLBYSIDE, Manager.

circulation in Canada, Toronto and Montreal excepted.

High Grade

Toilet Soaps,

Perfumes and

Toilet Powders.

A NEW IMPORTATION
...JUST RECEIVED...

W. T. STRONG & CO.

Dispensing Chemists,
184 DUNDAS STREET,
LONDON.

PROGRAMME.

TUESDAY NIGHT, JAN. 16.

"A SOLDIER'S SWEETHEART."

CAST OF CHARACTERS.

Teddy O'Malley, an Irish American.....	TOM MARKS
Victor Belmont.....	W. A. Moriarity
Benjamin Lovell.....	Chris C. Allen
Joseph Spracklin.....	Alex Marks
James.....	Earnest Marks
Blessed Brother Tommy.....	Joe Marks
Private Mason.....	Gordon McDowell
Nettie.....	Miss Katherine Braham
Dot.....	Master George
Kate Tyson.....	Miss Alice Kemp
Elsie Dovell, fond and true.....	MISS MAY A. BELL

SYNOPSIS: Act I—Garden of Lovell Estate
 Act II—Cottage in London.
 Act III—Same as Act I.
 Act IV—Interior of the Lovell Home.

Programme continued on next page.

COAL GAS

Gives a soft and mellow light; does not injure the eyesight; turns the darkness of the night to what appears like sunshine light. Therefore, use COAL GAS to illuminate your homes and business places.

CITY GAS COMPANY, 401 Clarence Street.

Smoke David Harum Cigar.

A. WOLF, Tobacconist

Has an assortment of Imported Cigars that is worth considering.

368 Richmond Street.
202½ Dundas Street.

WM. STEVELY & SON,

—DEALERS IN—

Cooking and Heating Stoves and Ranges for Coal or Wood, Lamp Goods, Cutlery and General House Furnishings.

362 RICHMOND STREET.

F. N. Harvey, L.D.S.

DENTIST

204 DUNDAS STREET.

OFFICE RESTAURANT

Opposite the Richmond Street exit of Opera House.

Choice Wines, Liquors and Cigars.
Dining Parlors Upstairs.

D. SARE.

PROGRAMME.

WEDNESDAY NIGHT, JAN. 17.

"THE DUKE'S DAUGHTER."

CAST OF CHARACTERS.

Sergeant Casey (and Bridget Doyle).....	TOM MARKS
Victor Laurent.....	Alex Marks
Marquis de Chandos.....	W. A. Moriarity
Pierre Rousel.....	Gordon McDowell
Duke de Bodesier.....	Chris. C. Allen
Jacque Causade.....	Joe Marks
Lieutenant.....	Ernest Marks
Guard.....	Miss Katherine Braham
Florette.....	Miss Alice Kemp
Andree.....	Master George
Little Marie.....	MISS MAY A. BELL
Marguerite Laurent (the Duke's daughter).....	

SYNOPSIS: Act I—Weaving the web. Act II—Bridget Doyle finds the important letter. Act III—Little Marie and her grandpa. Act IV—The plot to gain Marguerite's hand. Act V—Bridget Doyle in a box. "My own dear wife."

Programme continued on next page.

"MATCHLESS BELL PIANOS" Take the Lead.

Used exclusively at Grand Opera House.

SANBORN & TREBILCOCK, Sole Agents for London, 183 Dundas Street.

Charlie, please take me to the Fashion Restaurant, No. 357 Richmond St., to have some Oysters after the Show.

Smoke Uneeda Cigar.

High-toned Instruments for
Cultured People

The MASON & RISCH PIANO

Is the acme of Musical Perfection—The Crowned
King of Stringed Harmony.

LONDON WAREROOMS—213 Dundas Street.

Next Attraction

MONDAY, JANUARY 22nd, 1900.

Everybody's Favorite. America's Funniest Woman. Clever FANNY RICE, and
her Excellent Company, presenting the New Farical Play,

"A Wonderful Woman"

A LAUGH PROVOKER FROM START TO FINISH.

DR. G. W. PURDY, - - - Manager.

COMING

WEDNESDAY, JANUARY 24th.

A Trip to Coontown

FRIDAY AND SATURDAY, AND SATURDAY MATINEE, JANUARY 26th and 27th.

A Triple Alliance

For Latest Styles.....
Nobby, Well Made Clothes,

—GO TO—

FAIRBAIRN

...The Tailor

Opposite City Hall, Richmond St.

Buy Your Xmas....

Wines and Liquors

.....AT.....

WATT & WOODWARD'S

Seventeen different brands of Scotch
Whiskey, and a full assortment of all
the leading brands of Wines, Brandies,
Claret, etc., in stock.

428 RICHMOND STREET.

Trading Stamps.

'Phone 415

Palace Dancing Academy

Thoroughly Organized and Strictly Up-to-Date.

COMPETENT TEACHERS.
LIBERAL TERMS.

DAYTON & McCORMICK

The Original Swiss Electro-Chemical Ring

ESTABLISHED 1876.
None genuine without Trade-Mark in each ring. The first introduced in America. All others are imitations.

Rheumatism

in all its various forms. **Neuralgia, Gout, Lumbago, Diabetes, Bright's Disease, Asthma** are all caused by **Uric Acid in the blood.** The Metals of which this ring is composed, in connection with the acid create an **Electro-Chemical** action, removing the acid and curing the disease.

123 Catherine St.
San Francisco, Cal. Sole agents
The Swiss-American Ring Co.

Price \$2
SILVER COVERED \$3
GOLD COVERED \$4

Sent by mail or C.O.D. Express. For size cut hole in card that fits finger or jeweler's measuring money standard if not satisfactory after wearing, 30 days.

THE SWISS-AMERICAN RING CO.
EXPRESS BUILDING WINDSOR, ONT., CANADA
OPERA BLOCK, DETROIT, MICH., U.S.A.

T. CONNOR

Wholesale and Retail
Butcher.

Stalls, 6 & 7 Covent Garden Market.

The Ones Left Behind....

A SPECIAL ATTRACTION
AT THE

GRAND OPERA HOUSE,

Tuesday Ev'g, Jan. 23, 1900

On the above date the Soldiers' Wives' League intend giving a Grand Military Concert in the Opera House. The programme will be of a sufficiently varied nature to suit everybody, consisting as it will, of songs, dances, military exercises, drills, etc.

The MONROE IMPROVED GOLD CURE

Established 1892.



NO BAD
AFTER
EFFECTS.

Safe and Reliable
Treatment for
the Cure of



Send for
Pamphlet.

H. J. McKAY, Prop.,

P. O. BOX 446—Tel. 178.



Alcohol,
Morphine,
Cocaine and
Tobacco Habits



WINDSOR, ONT.

46-48 Pitt St. W.

