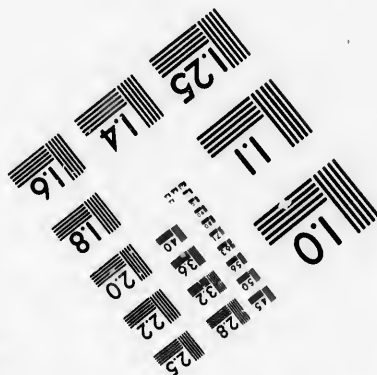
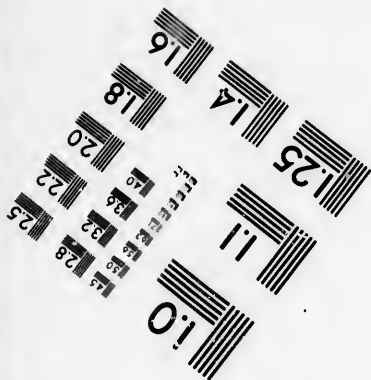
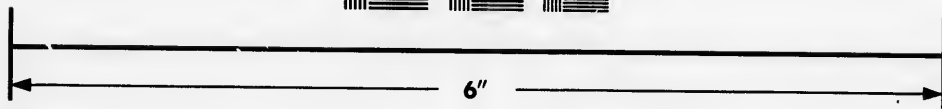
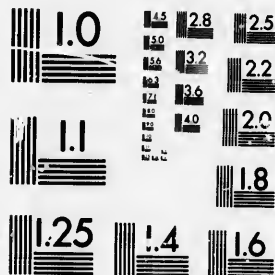


**IMAGE EVALUATION
TEST TARGET (MT-3)**



**Photographic
Sciences
Corporation**

23 WEST MAIN STREET
WEBSTER, N.Y. 14580
(716) 272-4503

0
15 28
18 25
22
20
18
5

**CIHM/ICMH
Microfiche
Series.**

**CIHM/ICMH
Collection de
microfiches.**



Canadian Institute for Historical Microreproductions / Institut canadien de microreproductions historiques

11
10
57

© 1986

Technical and Bibliographic Notes/Notes techniques et bibliographiques

The Institute has attempted to obtain the best original copy available for filming. Features of this copy which may be bibliographically unique, which may alter any of the images in the reproduction, or which may significantly change the usual method of filming, are checked below.

L'Institut a microfilmé le meilleur exemplaire qu'il lui a été possible de se procurer. Les détails de cet exemplaire qui sont peut-être uniques du point de vue bibliographique, qui peuvent modifier une image reproduite, ou qui peuvent exiger une modification dans la méthode normale de filmage sont indiqués ci-dessous.

- | | |
|---|---|
| <input type="checkbox"/> Coloured covers/
Couverture de couleur | <input type="checkbox"/> Coloured pages/
Pages de couleur |
| <input type="checkbox"/> Covers damaged/
Couverture endommagée | <input type="checkbox"/> Pages damaged/
Pages endommagées |
| <input type="checkbox"/> Covers restored and/or laminated/
Couverture restaurée et/ou pelliculée | <input type="checkbox"/> Pages restored and/or laminated/
Pages restaurées et/ou pelliculées |
| <input type="checkbox"/> Cover title missing/
Le titre de couverture manque | <input checked="" type="checkbox"/> Pages discoloured, stained or foxed/
Pages décolorées, tachetées ou piquées |
| <input type="checkbox"/> Coloured maps/
Cartes géographiques en couleur | <input type="checkbox"/> Pages detached/
Pages détachées |
| <input type="checkbox"/> Coloured ink (i.e. other than blue or black)/
Encre de couleur (i.e. autre que bleue ou noire) | <input checked="" type="checkbox"/> Showthrough/
Transparence |
| <input type="checkbox"/> Coloured plates and/or illustrations/
Planches et/ou illustrations en couleur | <input type="checkbox"/> Quality of print varies/
Qualité inégale de l'impression |
| <input type="checkbox"/> Bound with other material/
Relié avec d'autres documents | <input type="checkbox"/> Includes supplementary material/
Comprend du matériel supplémentaire |
| <input type="checkbox"/> Tight binding may cause shadows or distortion along interior margin/
La reliure serrée peut causer de l'ombre ou de la distorsion le long de la marge intérieure | <input type="checkbox"/> Only edition available/
Seule édition disponible |
| <input type="checkbox"/> Blank leaves added during restoration may appear within the text. Whenever possible, these have been omitted from filming/
Il se peut que certaines pages blanches ajoutées lors d'une restauration apparaissent dans le texte, mais, lorsque cela était possible, ces pages n'ont pas été filmées. | <input type="checkbox"/> Pages wholly or partially obscured by errata slips, tissues, etc., have been refilmed to ensure the best possible image/
Les pages totalement ou partiellement obscurcies par un feuillet d'errata, une pelure, etc., ont été filmées à nouveau de façon à obtenir la meilleure image possible. |
| <input checked="" type="checkbox"/> Additional comments: [Printed ephemera] 1 sheet (verso blank)
Commentaires supplémentaires: | |

This item is filmed at the reduction ratio checked below/
Ce document est filmé au taux de réduction indiqué ci-dessous.

10X	12X	14X	16X	18X	20X	22X	24X	26X	28X	30X	32X
							✓				

The copy filmed here has been reproduced thanks to the generosity of:

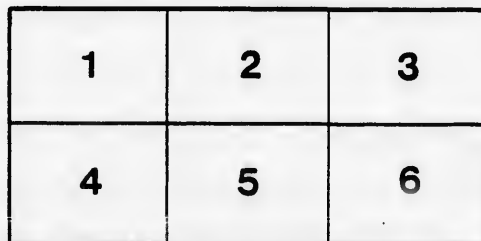
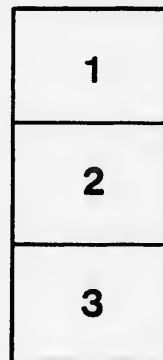
Manuscript Division
Public Archives of Canada

The images appearing here are the best quality possible considering the condition and legibility of the original copy and in keeping with the filming contract specifications.

Original copies in printed paper covers are filmed beginning with the front cover and ending on the last page with a printed or illustrated impression, or the back cover when appropriate. All other original copies are filmed beginning on the first page with a printed or illustrated impression, and ending on the last page with a printed or illustrated impression.

The last recorded frame on each microfiche shall contain the symbol \rightarrow (meaning "CONTINUED"), or the symbol ∇ (meaning "END"), whichever applies.

Maps, plates, charts, etc., may be filmed at different reduction ratios. Those too large to be entirely included in one exposure are filmed beginning in the upper left hand corner, left to right and top to bottom, as many frames as required. The following diagrams illustrate the method:



L'exemplaire filmé fut reproduit grâce à la générosité de:

Division des manuscrits
Archives publiques du Canada

Les images suivantes ont été reproduites avec le plus grand soin, compte tenu de la condition et de la netteté de l'exemplaire filmé, et en conformité avec les conditions du contrat de filmage.

Les exemplaires originaux dont la couverture en papier est imprimée sont filmés en commençant par le premier plat et en terminant soit par la dernière page qui comporte une empreinte d'impression ou d'illustration, soit par le second plat, selon le cas. Tous les autres exemplaires originaux sont filmés en commençant par la première page qui comporte une empreinte d'impression ou d'illustration et en terminant par la dernière page qui comporte une telle empreinte.

Un des symboles suivants apparaîtra sur la dernière image de chaque microfiche, selon le cas: le symbole \rightarrow signifie "A SUIVRE", le symbole ∇ signifie "FIN".

Les cartes, planches, tableaux, etc., peuvent être filmés à des taux de réduction différents. Lorsque le document est trop grand pour être reproduit en un seul cliché, il est filmé à partir de l'angle supérieur gauche, de gauche à droite, et de haut en bas, en prenant le nombre d'images nécessaire. Les diagrammes suivants illustrent la méthode.



PROCLAMATION

*West Riding of the
County of Northumberland,
To Wit.*

PUBLIC NOTICES
ors of the West
berland, that in

me directed, and bearing date the Second day of
of our Lord one thousand eight hundred and fifty
the said Electors at the Town Hall in the Vicarage
ship of Hamilton, in the said West Riding of
on Thursday, the Eleventh day of the month of
one thousand eight hundred and fifty-eight, at t

me directed, and bearing date the Second day of



AMMATION

PUBLIC NOTICE is hereby given to the Electors of the West Riding of the County of Northumberland, that in obedience to Her Majesty's Writ to the Second day of the month of February, in the year one thousand and fifty-eight, I require the presence of all in the Village of Cold Springs, in the Town of the West Riding of the said County of Northumberland, on the second day of the month of February, in the year of our Lord one thousand and fifty-eight, at the hour of twelve o'clock noon for the purpose of the said Writ.

the directed, and bearing date the Second day
of our Lord one thousand eight hundred and
the said Electors at the Town Hall in the V
ship of Hamilton, in the said West Riding of
on Thursday, the Eleventh day of the month o
one thousand eight hundred and fifty-eight, at
the purpose of electing a person to represent
this Province, and that in case a Poll shall be
by law prescribed, such Poll will be opened on
aforesaid month of February, in the year of o
and fifty-eight,—In the Town of Cobourg as fo

In the South Ward of the said town at N

In the West Ward of said town at No. 5

And in the East Ward of said town at M

At the Town Hall in the Village of Cold S

At the Common School House in the Vill
Alnwick.

At the Town Hall in the Village of Graft

And at the Township Clerk's office in the
in the said West Riding of the said County of Northumberland.

Of all which every person is hereby requir
accordingly.

Given under my hand at the Town of Cob
land, this Second day of February, in the year of our Lord one th

JAMES B

Returning Officer for

Printed at the Job Office of t

Second day of the month of February, in the year
hundred and fifty-eight, I require the presence of
all in the Village of Cold Springs, in the Town-
ship of Riding of the said County of Northumberland,
the month of February, in the year of our Lord
fifty-eight, at the hour of twelve o'clock, noon, for
to represent them in the Legislative Assembly of
Poll shall be demanded and allowed in the manner
to be opened on Thursday, the Eighteenth day of the
the year of our Lord one thousand eight hundred
Cobourg as follows:

and town at No. 2 Engine House.

town at No. 5 School House.

and town at Munson's Carriage Factory.

age of Cold Springs, in the Township of Hamilton.

se in the Village of Alwick, in the Township of

age of Grafton, in the Township of Haldimand.

s office in the Township of South Monaghan.—All
Northumberland.

ereby required to take notice and govern himself

Town of Cobourg, in the County of Northumber-
of our Lord one thousand eight hundred and fifty-eight.

IES B. FORTUNE,

Returning Officer for the West Riding of the County of Northumberland.

the Job Office of the Cobourg Star.

