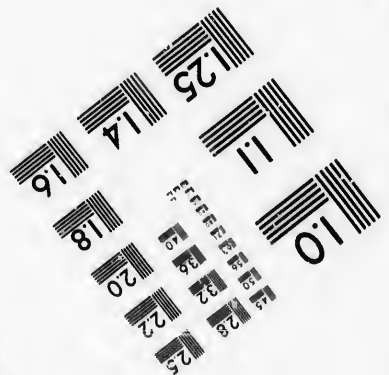
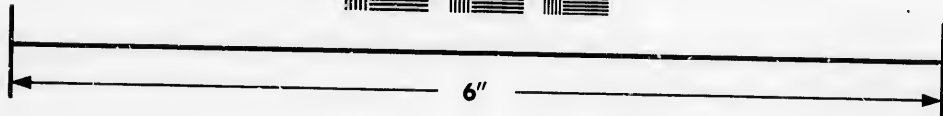
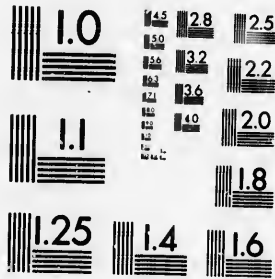


**IMAGE EVALUATION  
TEST TARGET (MT-3)**



**Photographic  
Sciences  
Corporation**

23 WEST MAIN STREET  
WEBSTER, N.Y. 14580  
(716) 872-4503

**CIHM/ICMH  
Microfiche  
Series.**

**CIHM/ICMH  
Collection de  
microfiches.**



**Canadian Institute for Historical Microreproductions / Institut canadien de microreproductions historiques**

**© 1986**

Technical and Bibliographic Notes/Notes techniques et bibliographiques

The Institute has attempted to obtain the best original copy available for filming. Features of this copy which may be bibliographically unique, which may alter any of the images in the reproduction, or which may significantly change the usual method of filming, are checked below.

L'Institut a microfilmé le meilleur exemplaire qu'il lui a été possible de se procurer. Les détails de cet exemplaire qui sont peut-être uniques du point de vue bibliographique, qui peuvent modifier une image reproduite, ou qui peuvent exiger une modification dans la méthode normale de filmage sont indiqués ci-dessous.

- Coloured covers/  
Couverture de couleur
- Covers damaged/  
Couverture endommagée
- Covers restored and/or laminated/  
Couverture restaurée et/ou pelliculée
- Cover title missing/  
Le titre de couverture manque
- Coloured maps/  
Cartes géographiques en couleur
- Coloured ink (i.e. other than blue or black)/  
Encre de couleur (i.e. autre que bleue ou noire)
- Coloured plates and/or illustrations/  
Planches et/ou illustrations en couleur
- Bound with other material/  
Relié avec d'autres documents
- Tight binding may cause shadows or distortion  
along interior margin/  
La reliure serrée peut causer de l'ombre ou de la  
distorsion le long de la marge intérieure
- Blank leaves added during restoration may  
appear within the text. Whenever possible, these  
have been omitted from filming/  
Il se peut que certaines pages blanches ajoutées  
lors d'une restauration apparaissent dans le texte,  
mais, lorsque cela était possible, ces pages n'ont  
pas été filmées.
- Additional comments:/ [Printed ephemera] [4]p.  
Commentaires supplémentaires:

- Coloured pages/  
Pages de couleur
- Pages damaged/  
Pages endommagées
- Pages restored and/or laminated/  
Pages restaurées et/ou pelliculées
- Pages discoloured, stained or foxed/  
Pages décolorées, tachetées ou piquées
- Pages detached/  
Pages détachées
- Showthrough/  
Transparence
- Quality of print varies/  
Qualité inégale de l'impression
- Includes supplementary material/  
Comprend du matériel supplémentaire
- Only edition available/  
Seule édition disponible
- Pages wholly or partially obscured by errata  
slips, tissues, etc., have been refilmed to  
ensure the best possible image/  
Les pages totalement ou partiellement  
obscurcies par un feuillet d'errata, une pelure,  
etc., ont été filmées à nouveau de façon à  
obtenir la meilleure image possible.

This item is filmed at the reduction ratio checked below/  
Ce document est filmé au taux de réduction indiqué ci-dessous.

10X	12X	14X	16X	18X	20X	22X	24X	26X	28X	30X	32X
								✓			

tails  
du  
odifier  
une  
image

The copy filmed here has been reproduced thanks to the generosity of:

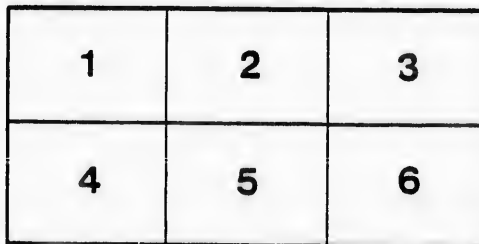
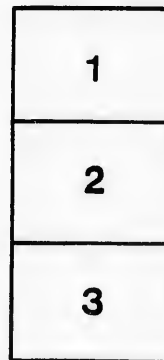
D. B. Weldon Library  
University of Western Ontario  
(Regional History Room)

The images appearing here are the best quality possible considering the condition and legibility of the original copy and in keeping with the filming contract specifications.

Original copies in printed paper covers are filmed beginning with the front cover and ending on the last page with a printed or illustrated impression, or the back cover when appropriate. All other original copies are filmed beginning on the first page with a printed or illustrated impression, and ending on the last page with a printed or illustrated impression.

The last recorded frame on each microfiche shall contain the symbol  $\rightarrow$  (meaning "CONTINUED"), or the symbol  $\nabla$  (meaning "END"), whichever applies.

Maps, plates, charts, etc., may be filmed at different reduction ratios. Those too large to be entirely included in one exposure are filmed beginning in the upper left hand corner, left to right and top to bottom, as many frames as required. The following diagrams illustrate the method:



rata  
o  
elure,  
à

32X

L'exemplaire filmé fut reproduit grâce à la générosité de:

D. B. Weldon Library  
University of Western Ontario  
(Regional History Room)

Les images suivantes ont été reproduites avec le plus grand soin, compte tenu de la condition et de la netteté de l'exemplaire filmé, et en conformité avec les conditions du contrat de filimage.

Les exemplaires originaux dont la couverture en papier est imprimée sont filmés en commençant par le premier plat et en terminant soit par la dernière page qui comporte une empreinte d'impression ou d'illustration, soit par le second plat, selon le cas. Tous les autres exemplaires originaux sont filmés en commençant par la première page qui comporte une empreinte d'impression ou d'illustration et en terminant par la dernière page qui comporte une telle empreinte.

Un des symboles suivants apparaîtra sur la dernière image de chaque microfiche, selon le cas: le symbole  $\rightarrow$  signifie "A SUIVRE", le symbole  $\nabla$  signifie "FIN".

Les cartes, planches, tableaux, etc., peuvent être filmés à des taux de réduction différents. Lorsque le document est trop grand pour être reproduit en un seul cliché, il est filmé à partir de l'angle supérieur gauche, de gauche à droite, et de haut en bas, en prenant le nombre d'images nécessaire. Les diagrammes suivants illustrent la méthode.

LONDON PTD & LITHO CO.

MICHIGAN, OHIO  
CANADIAN CIRCUIT

EIGHTEEN  
THEATRES

CLEVELAND, CINCINNATI, BUFFALO  
DETROIT, TORONTO,  
TOLEDO, LONDON, HAMILTON,  
WOODSTOCK, SAGINAW,  
GRAND RAPIDS, BAY CITY,  
MCKEON.

# Grand ERA HOUSE London.

C. J. WHITNEY.  
LESSEE.

A. E. ROOTE.  
MANAGER

ONTARIO.



W. SMITH.

E. HOLLAND.

W. S. PARTRIDGE.

## SMITH & BROS.

THE  
LEADING  
SANITARY  
PLUMBERS  
AND  
HEATING  
ENGINEERS  
OF  
WESTERN  
ONTARIO.

376  
RICHMOND STREET.



LONDON.

OPPOSITE GRAND OPERA HOUSE BUILDING.

A full stock of Supplies always on hand.

TELEPHONE 538.

LADIES! THE ONLY WAY



**Parisian  
Steam  
Laundry**

73 & 75 DUNDAS STREET.

BRANCH OFFICES:

226 Dundas St. 752 Waterloo, 410 Hamilton Rd.  
280 " " 572 Pall Mall, 211 Wellington.  
310 " " 380 Richmond, 338 Ridout.  
632 " " 485 " "

J. K. SPRY, Manager.

**HUESTON'S**

**LIVERY,  
Goupe & Cab Stables**  
WELLINGTON STREET.

*Finest Horses and Carriages in the City.*  
OPEN DAY AND NIGHT. TELEPHONE 441.

**ROBT. HUESTON,**  
*Proprietor.*

**H. McKENNA,**

-FOR-

**Choice Cigars, Tobaccos**  
AND PIPES.

ALWAYS OPEN .....  
..... AFTER THE OPERA.

225 DUNDAS STREET.

**SPRING**



1819 4.

WE have just received the finest assortment of Spring Hats ever shown in the city. We are leaders for correct shapes, try us. A pleasure to show goods.

**Rivard**

LONDON'S FASHIONABLE HATTER AND FURRIER .....  
**400 RICHMOND STREET.**

IF YOU WANT

**WILLIAMS' Pianos**

Cannot be excelled for touch, quality, beauty and great power of tone, with highest excellence of workmanship.

ALL THE LATEST VOCAL AND INSTRUMENTAL MUSIC

Musical Instruments of all kinds, Strings and Fittings  
AT LOWEST PRICES.

**R. S. WILLIAMS & SON,** 178 DUNDAS STREET  
LONDON, ONT.

J. A. GRODIN, Manager.

PROGRAMME

Saturday,

June 2nd.

CHAS. H. YALE'S

**Newest  
Devil's ..  
Auction.**

Or, THE GOLDEN BRANCH.

Written, Arranged and Staged under the

Personal Direction of Chas. H. Yale.

(Programme continued on next page.)

SOMETHING NEW.

Opera English & Canadian  
Caramels. Chocolate Creams.

VERY FINEST Olives in Bulk  
French Crystalized

FRUITS .. Fresh Roquefort Cheeses..

**FITZGERALD, SCANDRETT & CO.**  
160 Dundas Street.

PRESS' WANT COLUMN.

ESTABLISHED 1831.

**H. DAVIS & SON,  
WATCHMAKERS  
AND  
JEWELLERS**

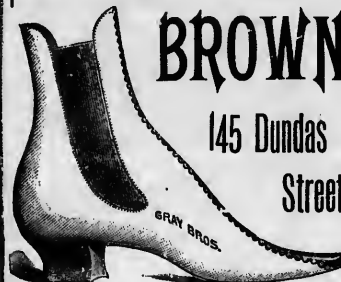
DEALERS IN  
Watches, Clocks, Jewellery, Spectacles,  
Silver Plated Ware, &c.

170 DUNDAS ST., LONDON, ONT.

**W. T. STRONG**

Dispensing  
Chemist,

184 Dundas Street,  
LONDON, - ONTARIO.



The reputation enjoyed by Brown's  
Shoe Store as the leader in  
First-class, Stylish, - -

- - Fine Footwear  
has been well earned.

In our 1894 SPRING and SUMMER Stock  
we have a large assortment of the  
most handsome and artistic  
designs in

LADIES' AND GENTLEMEN'S

→ DRESS AND WALKING SHOES ←

We have full lines of Staple  
goods of the highest grade; guar-  
antee the best results, and are in a  
position to sell lower than any other  
house in this City. : : : : :

MOTHERS SHOULD NOT FAIL TO SEE OUR  
"School Boots" & "Baby Moccasins"

Experts Say: "Brown's Bicycle  
and Tennis Shoes  
are the best out."

Sole Agent FOR THE Celebrated Douglas Shoes.

**BROWN**

TELEPHONE 861.

IF YOU WANT THE BEST TAKE THE "PAIN PRESS." ALL THE NEWS!

— TRY —  
**SOUTHCOTTS**

FOR A... **Nice Suit  
Fancy Vest  
OR  
Trousers**

HEAT LINE OF LIGHT-WEIGHT OVERCOATINGS IN STOCK.

Satisfaction Assured. Prices Right.

361 RICHMOND STREET.

I-I-I-I-I-I-I-I-I-I

PRINTERS  
LITHOGRAPHERS  
ENGRAVERS

The  
**London  
Printing and  
Lithographing  
Co'y,** SUCCESSORS TO FREE PRESS  
PRINTING AND LITHO.  
DEPARTMENTS.

OFFICE,  
"FREE PRESS"  
BUILDING.

BEST WORK  
AT MODERATE  
PRICES.

I-I-I-I-I-I-I-I-I-I

**TEGUMSEH HOUSE**

LONDON.



Directly opposite G.T.R. depot;  
street railway past the doors;  
convenient to all the wholesale  
and retail business houses of  
city, making it the most desir-  
able hotel in the city; elevator,  
and heated throughout with  
steam.

Porter in attendance on  
arrival of all trains.

**RATES, \$2.00 AND \$2.50  
PER DAY,**

ACCORDING TO LOCATION.

No Extra Charge For Baggage.

C. W. DAVIS, PROP.

**GENTLEMEN!!!**  
**SUMMER UNDERWEAR**

German Balbriggan Shirts & Drawers  
37¢ CENTS EACH.  
French Balbriggan Shirts & Drawers  
45 CENTS EACH.

**GRAHAM BROS.**

«Programme Continued.»

Overture, "Newest Devil's Auction," . . . Herman Periet  
F. E. REITER AND ORCHESTRA.

**Mortals.**

Carlos, a poor shepherd . . . Miss Nera Vernon  
Toby, a donkey, afterwards transformed to man . . .  
. . . . . Mr. Augustus Bruno, Jr.  
Pete Andoche, an old Flemish farmer . . . Mr. Al. W. Decker  
Count Fortunio, manufactured by Mephisto's art to  
resemble a mortal . . . Miss Annie Moore  
Going Gone, an auctioneer . . . Mr. James Short  
Tresbian, a bailiff . . . Mr. George Coleman  
Madeline Andoche's daughter . . . Miss Mildred Holden  
Janet, a milkmaid . . . Miss Josie Sisson  
Peasants, Villagers, etc.

**Mongolians.**

Kow Wow Chang, grand madarin . . . Mr. Al. W. Decker  
The Shing, his astrologer . . . Mr. W. H. Short  
Hohang Kan, his doctor . . . Mr. Eddie Snow  
Moon Show, a soothsayer . . . Mr. Wm. P. Speurl  
Koket, an attendant . . . Miss Laura Zieffe  
Oriental Attendants to the Mandarin.

**Hindoos.**

The Rajah . . . Mr. T. L. Lothrop  
Muli, an attendant . . . Mr. Charles G. Frost  
The Kahn of Tartary . . . Mr. W. H. Burns  
Guards of the Rajah, Slaves and Attendants.

**Immortal.**

Chrystaline, the fairy protectress . . . Miss Madge Torrance

**Infernals.**

Mephisto, the evil one . . . Mr. Henry P. Thomas  
Chaos, an imp of darkness . . . Mr. William Ruge  
Witches, Gnomes, Goblins, Skeletons and Demons.

**Principal Dancers.**

Signorita Emilia Bartoletti . . . Premieres  
Signorita Concettina Chitten . . .  
Signorita Adele Amore . . . Premiere Characteristic  
Signor Eduardo . . . Male Dancer

**Specialty Stars.**

Toner and Frobel . . . Aerial Grotesque  
The Lorello Trio . . . Pantomimic Eccentrics  
The French Quadrille Dancers,  
Augustus J. Bruno, Jr., and Miss Josie Sissor.

(Programme continued on last page.)

**McLEAN'S HARDWARE**

— FOR —

**Bissell's Carpet Sweepers.**

WE CAN SHOW YOU TWELVE DIFFERENT STYLES SAME  
AS ARE NOW DISPLAYED BY THE BISSELL COM-  
PANY AT THE WORLD'S FAIR.

CALL AND SEE THESE GOODS

— AT —

**McLEAN'S HARDWARE,**  
151 Dundas Street.

**Wm. Stevely & Son,**

— THE LEADING DEALERS IN —

**STOVES, RANGES,**

.. AND ..

**HOUSE FURNISHING GOODS.**

OUR STOCK IS THE LARGEST.  
OUR PRICES THE LOWEST.

362 RICHMOND STREET.

'PHONE 452.

**W. T. STRONG,**

Dispensing

Chemist,

184 DUNDAS ST..

LONDON, ONT.

.. FOR ..

**Fine Etchings....**

— AND —

**Engravings**

— TRY —

**O. B. GRAVES,**

222 DUNDAS STREET.



**BRENER BROS.**  
LONDON ONT.

FOR SALE AT

**HUGH LOYELES,'**

... 202 1/2 DUNDAS STREET.

At the Opera Box Office.  
MRS. NEWGOLD (at the box office).—Are opera seats on sale here?

TICKET SELLER.—Yes, Ma'am.  
MRS. NEWGOLD.—Well, what night do Lohengrin and Carmen sing together?—*Chicago Record.*

As He Liked It.  
UNSOPHISTICATED YOUTH (at the box office).—"I'll take two seats for to-morrow night. What are they going to play?"  
TREASURER WALTERS.—"As You Like It."

U. Y.—"As I Like It? Well, if it's all the same, you can put me down for Romeo and Joolyui."—*St. Louis Republican.*

## FIND YOUR FORTUNE IN LUCKY SANTO DOMINGO

INVESTMENT BONDS guaranteed by the **SANTO DOMINGO GUARANTY CO.**

Allotments take place monthly, and are payable in U. S. gold coin in sums of \$160,000, \$40,000, \$20,000, etc.  
5,692 Bonds paid monthly, aggregating \$574,880. Subscription fees, \$10, \$5, \$2, \$1, 50c. and 25c.

Apply to Local Agents, or address,  
**ANTONIO MORA,** CITY OF SANTO DOMINGO,  
SANTO DOMINGO.....

## EDY BROS.

The Artistic Photographers,

—RECEIVED—

**Three First Prizes**

—AND—

**DIPLOMA**

For Finest Display of Photography  
AT WESTERN FAIR, 1893.

Cabinet Photos, \$3 per doz.

## EDY BROS.,

214 DUNDAS STREET.

### THE FICKLE PUBLIC.

When melodrama holds the stage,  
The people for the minstrels rage.

And when the troubadours are starred,  
Their fancy turns to Avon's bard.

But when the house with Shakespeare's filled,  
They want to see the opera billed.

Then when the opera fills the house,  
They call for farce "mit Saus und Braus."

And so it goes; and it's a race  
Twixt manager and populace.

For, spite of broad and varied range  
The fickle people always change.

And always quit the best to see  
Some stupid meeting, billed as "Free."

### «Programme Concluded.»

During the evening, incidental to the stage performance  
the ORCHESTRA of the Grand Opera House, under  
the direction of MR. FRED. L. EVANS, will  
perform the following selections

OVERTURE—"Norma,".....*Belini*  
POLONAISE—Wedding,.....*Liszt*  
HUNGARIAN DANCES,.....*Moszkowsky*  
GALOP—"Cricket,".....*Weingarten*

The above programme subject to transposition

N. B.—The Orchestra of the Grand Opera House may be secured for engagements outside the theatre, by applying at or addressing the Box Office.

The Furniture used on stage is supplied by JOHN FERGUSON & SON,  
Furniture Manufacturers.

### ∴ SYNOPSIS. ∴

ACT I.—Scene 1—The Council Chamber of Mephisto, by John R. Wilkins. Revolving change. Scene 2—Andoche Valley, by Wilkins. Specialties by Miss Josie Sisson.

THE VIENNESE TROUPE OF DANCERS.

1—The Watteau Dancers,	4—The Shy Young Girls.
2—The Perrots and Pierrettes.	5—The Giddy old Maids.
3—The Tee-To Tem, Adele Amore and Emilia Bartolelli.	6—Finale. Enire Corps de Ballet.

Scene 3—The Ruined Castle, by Wilkins. Scene 4—Ardoche Valley, Sunset, Wilkins. Grand Tableau.

ACT II.—Scene 1—Flemish Landscape, Wilkins Comic Specialty by Augustus Bruno, Jr. Scene 2—The Mysterious Chamber, by Arthur Carbould. Introduction of a new comic scene and combat between Augustus Bruno, Jr., and William Ruge. Mechanical effect to the land of the Pagodas, by Wilkins. Tomer and Frobel, Aerial Grotesques.

BRILLIANT CHINESE DIVERTISEMENT.

1—The Illuminated March.	5—The Chin Chin Chinnamen.
2—Solo—Signorita Emilia Bartolelli.	6—Mandarin Dance.
3—Solo—"Concettina Chitten.	7—Finale—Premieres Secondos. & Ballerine. Grand Tableau.
4—Chinese Fisher Boys.	

ACT III.—Follies en Blanc et Noir. An Absolute Novelty. Interpreted by the Lorello Trio. Mechanical change to Scene 2—The Oriental Palace, by E. Castel Bert. First Production of a New and Novel Series of Tableaux Vivants, combined with Pantomimic Absurdities, and New Ballet Features, and entitled

THE BOULEVARD.

1—Newsboys and Foolblack.	7—The Army of Salvation.
2—Before the Ball.	8—The Shaft of Light. Original with this Company. Con- cettina Chitten.
3—After the Ball.	9—The Kings of the Baton.
4—The Silver Moth Dance, Adele Amore	10—Gorgons March Oriental.
5—The Quadrille Dance.	
6—Signorina Emilia Bartolelli.	

Scene 3—The Haunted Forest, by Wilkins. Scene 4—A Magnificent Transformation Scene, entitled "The Advent of Spring," by Wilkins.

## COMING ATTRACTIONS

Are always a source of interest,—  
theatrical or otherwise. Our attrac-  
tion just now is the new coal we  
are receiving daily. It comes direct  
from the mines, in box cars; is clean,  
dry, and strictly first-class. All  
orders, large or small, will receive  
our prompt and careful attention.  
Offices, 421 Richmond St., and 316  
Burwell St. A. D. Cameron & Son.

WE call the attention of our business men to the  
PROGRAM as an advertising medium. It reaches  
the class of people whose trade you want, and the  
way to get that trade is to make yourself known.

## BELTON & ROOTE, BILL POSTING, DISTRIBUTING

...AND...  
GENERAL ADVERTISING AGENTS

Control all the Bill Boards and Dead Walls through-  
out the City. Population of City, 40,000  
All orders for Bill Posting, Distributing Card  
Tacking, and General Advertising for  
Western Ontario will receive  
prompt attention.

OFFICE: BOX OFFICE, OPERA HOUSE.

Roses. Carnations.  
Palms.  
Ferns. Bulbs.

## J. GAMMAGE & SONS,

213 Dundas Street.



