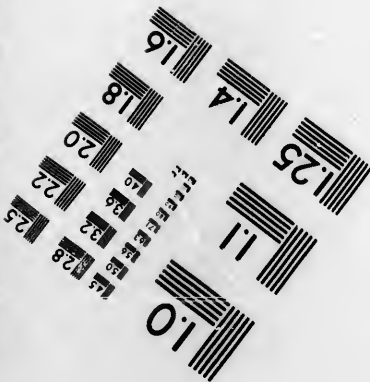
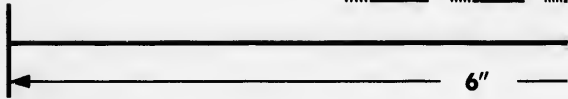
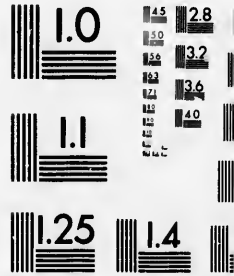
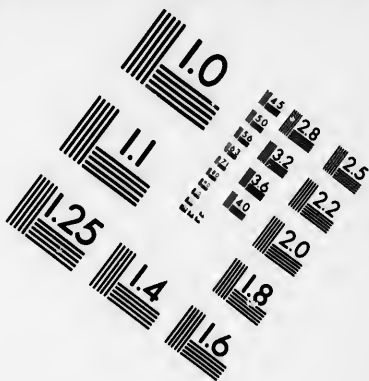


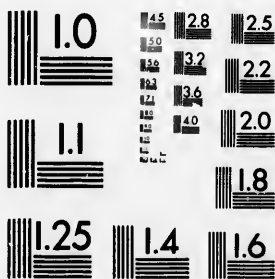
**IMAGE EVALUA  
TEST TARGET (M**



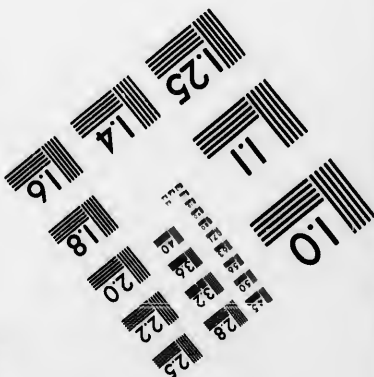
**Photographic  
Sciences  
Corporation**



**IMAGE EVALUATION  
TEST TARGET (MT-3)**



6"



**Photographic  
Sciences  
Corporation**

23 WEST MAIN STREET  
WEBSTER, N.Y. 14580  
(716) 872-4503

2.8 2.5 2.2

**CIHM  
Microfiche  
Series  
(Monographs)**

IC  
C  
m  
(m



**Canadian Institute for Historical Microreproductions / Institut c**

51

**© 19**

he  
phs)

**ICMH  
Collection de  
microfiches  
(monographies)**



microreproductions / Institut canadien de microreproductions historiques

**1992**

The Institute has attempted to obtain the best original copy available for filming. Features of this copy which may be bibliographically unique, which may alter any of the images in the reproduction, or which may significantly change the usual method of filming, are checked below.

- Coloured covers/  
Couverture de couleur
- Covers damaged/  
Couverture endommagée
- Covers restored and/or laminated/  
Couverture restaurée et/ou pelliculée
- Cover title missing/  
Le titre de couverture manque
- Coloured maps/  
Cartes géographiques en couleur
- Coloured ink (i.e. other than blue or black)/  
Encre de couleur (i.e. autre que bleue ou noire)
- Coloured plates and/or illustrations/  
Planches et/ou illustrations en couleur
- Bound with other material/  
Relié avec d'autres documents
- Tight binding may cause shadows or distortion  
along interior margin/  
La reliure serrée peut causer de l'ombre ou de la  
distorsion le long de la marge intérieure
- Blank leaves added during restoration may appear  
within the text. Whenever possible, these have  
been omitted from filming/  
Il se peut que certaines pages blanches ajoutées  
lors d'une restauration apparaissent dans le texte,  
mais, lorsque cela était possible, ces pages n'ont  
pas été filmées.
- Additional comments: /  
Commentaires supplémentaires:

This item is filmed at the reduction ratio checked below/  
Ce document est filmé au taux de réduction indiqué ci-dessous.

10X		14X		18X		22X	
		12X		16X		20X	

and Bibliographic Notes / Notes techniques et bibliographiques

the best original  
this copy which  
may alter any  
which may  
filming, are

L'Institut a microfilmé le meilleur exemplaire qu'il  
lui a été possible de se procurer. Les détails de cet  
exemplaire qui sont peut-être uniques du point de vue  
bibliographique, qui peuvent modifier une image  
reproduite, ou qui peuvent exiger une modification  
dans la méthode normale de filmage sont indiqués  
ci-dessous.

Coloured pages/  
Pages de couleur

Pages damaged/  
Pages endommagées

Pages restored and/or laminated/  
Pages restaurées et/ou pelliculées

Pages discoloured, stained or foxed/  
Pages décolorées, tachetées ou piquées

Pages detached/  
Pages détachées

Showthrough/  
Transparence

Quality of print varies/  
Qualité inégale de l'impression

Continuous pagination/  
Pagination continue

Includes index(es)/  
Comprend un (des) index

Title on header taken from: /  
Le titre de l'en-tête provient:

Title page of issue/  
Page de titre de la livraison

Caption of issue/  
Titre de départ de la livraison

Masthead/  
Générique (périodiques) de la livraison

Checked below/  
Indiqué ci-dessous.

18X			22X			26X			30X		
20X					24X			28X			32X

The copy filmed here has been reproduced thanks to the generosity of:

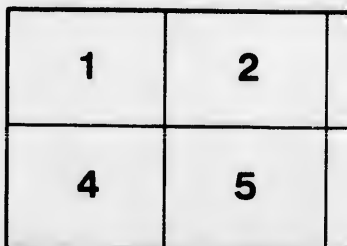
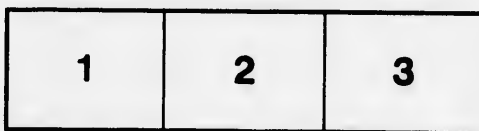
Hamilton Public Library

The images appearing here are the best quality possible considering the condition and legibility of the original copy and in keeping with the filming contract specifications.

Original copies in printed paper covers are filmed beginning with the front cover and ending on the last page with a printed or illustrated impression, or the back cover when appropriate. All other original copies are filmed beginning on the first page with a printed or illustrated impression, and ending on the last page with a printed or illustrated impression.

The last recorded frame on each microfiche shall contain the symbol  $\rightarrow$  (meaning "CONTINUED"), or the symbol  $\nabla$  (meaning "END"), whichever applies.

Maps, plates, charts, etc., may be filmed at different reduction ratios. Those too large to be entirely included in one exposure are filmed beginning in the upper left hand corner, left to right and top to bottom, as many frames as required. The following diagrams illustrate the method:



duced thanks

L'exemplaire filmé fut reproduit grâce à la générosité de:

Hamilton Public Library

est quality  
nd legibility  
with the

Les images suivantes ont été reproduites avec le plus grand soin, compte tenu de la condition et de la netteté de l'exemplaire filmé, et en conformité avec les conditions du contrat de filmage.

rs are filmed  
nding on  
ated impres-  
riate. All  
ning on the  
l impres-  
h a printed

Les exemplaires originaux dont la couverture en papier est imprimée sont filmés en commençant par le premier plat et en terminant soit par la dernière page qui comporte une empreinte d'impression ou d'illustration, soit par le second plat, selon le cas. Tous les autres exemplaires originaux sont filmés en commençant par la première page qui comporte une empreinte d'impression ou d'illustration et en terminant par la dernière page qui comporte une telle empreinte.

rofiche  
ng "CON-  
"END"),

Un des symboles suivants apparaîtra sur la dernière image de chaque microfiche, selon le cas: le symbole → signifie "A SUIVRE", le symbole ∇ signifie "FIN".

ned at  
arge to be  
filmed  
er, left to  
nes as  
trate the

Les cartes, planches, tableaux, etc., peuvent être filmés à des taux de réduction différents. Lorsque le document est trop grand pour être reproduit en un seul cliché, il est filmé à partir de l'angle supérieur gauche, de gauche à droite, et de haut en bas, en prenant le nombre d'images nécessaire. Les diagrammes suivants illustrent la méthode.

	3
--	---

1
2
3

1	2	3
4	5	6



# Special Lists, Hamilton Public Library.

Readers, on inquiry at the Delivery Desk, will be shown to the shelf containing following books, or to books in other classes (except Fiction) in which they are interested, and may make a selection personally. Books not in, are reserved on application. Numbers preceded by R are reference books, for use in the Library only. The figures after the title show the year of publication.

## Tennyson Literature.

Tennyson, Alfred, *baron, poet-laureate*, b. 1809—d. 1892.

### COLLECTED WORKS.

Poetical works. 7 v. 1872.

Poetical works. 1 v. 1890.

### SINGLE WORKS.

Becket: The cup: The falcon. 1885.

Demeter, and other poems. 1889.

The death of Enone, etc. 1892.

The foresters: Robin Hood and Maid Marion.

Watts, T. Letters on the dramatized version of "The Foresters." In the Athenæum, Oct. 3-10, 1891.

Harold: a drama. 1877.

In memoriam. 1880.

Locksley hall. 1887.

Lyrical poems: ed. by F. T. Palgrave. 1885.

Queen Mary: a drama. 1876.

The young people's Tennyson: ed. by W. J. Rolfe. 1886.

Songs from the published writings of Tennyson, set to music: ed. by W. G. Cusins. 1886.

### CRITICISMS.

Davidson, T. Prolegomena to In memoriam. 1889.

Dawson, S. E. A study of The princess. 1876.

Elsdale, H. Studies in the Idylls. 1878.

Genung, J. F. In memoriam: a study. 1890.

Van Dyke, H. The poetry of Tennyson. 1889.

Waugh, A. Alfred, Lord Tennyson: a study of his life and work. 1892.

### SHORTER CRITICISMS AND SKETCHES.

Cochran, R. Great thinkers. pp. 50-72. 920C2

Gladstone, W. E. Gleanings. v. 2. pp. 131-80. 824.89

Hayward, A. Sketches. v. 2. pp. 305-359. 920H2

Lowell, J. R. Collected works. 814.37

v. 2, pp. 121. Character of his verse.

v. 2, pp. 132. His Idylls of the king.

v. 3, pp. 209. Quoted by a Mississippi boatman.

v. 5, pp. 242. His knights unreal persons.

Schaff, P. Literature and poetry. pp. 48-50. 804S

Stedman, E. C. Nature of poetry. pp. 68-177. 811S3

Taine, H. History of English literature. v. 4. pp. 427-466. 820.9

Whipple, E. P. Essays. v. 1. pp. 338-346. 814.35

Also for reviews of Tennyson's poems, see Atlantic monthly, various volumes. See Index to Atlantic. 8051A

### ARTICLES IN ENCYCLOPEDIAS.

American cyclopaedia. v. 15. pp. 651. 8031

Globe encyclopaedia. v. 11. pp. 235. 8032

Supplement to Encyclopaedia Britannica. v. 5. pp. 471. 8034

### ARTICLES IN PERIODICALS.

Arnold, A. A day with Tennyson. Forum, Dec. 1890.

Conway, M. D. Tennyson at home. Harper's magazine, Feb. 1870, pp. 359-460.

Hutchison, J. Tennyson and botany. Popular science monthly, Dec. 1873, pp. 193-202.

Lounsbury, T. R. The two Locksley halls. Scribner's magazine, Aug. 1880, pp. 250-256.

Myers, F. W. H. Tennyson as prophet. Eclectic magazine, April, 1889, pp. 531-540.

Ritchie, Anne T. Alfred Tennyson. Harper's magazine, Dec. 1883, pp. 21-41.

Stead, W. T. Character sketch. Review of reviews, Nov. 1892.

Stedman, E. C. Alfred Tennyson. Scribner's monthly, May, 1874, pp. 100-160.

Van Dyke, H. On the study of Tennyson. Century, Aug. 1891.

Van Dyke, H. Tennyson's first flight. Scribner's magazine, Aug. 1889, pp. 242-249.

**Browning Literature.**

Browning, Robert, *English poet*, b. 1812 d. 1890.

**COMPLETE WORKS.**

Poetical and dramatic works. 6 v. 1888.

**SINGLE WORKS.**

Select poems : ed. by Rolfe. 1889.

**HANDBOOKS, CRITICISMS, ETC.**

Berdoo, E. *The Browning cyclopedia*. 1892.

Berdoo, E. *Browning's message to his time*. 1891.

Fairfax, W. *Browning and the drama*. 1891.

Nettleship, J. T. *Robert Browning : essays and thoughts*. 1890.

Orr, Mrs. S. *Handbook to Browning*. 1891.

Symons, A. *Introduction to the study of Browning*. 1887.

*Browning society's papers*. From 1881 to date.

**BIOGRAPHY.**

Orr, Mrs. S. *Life and letters of Browning*. 2 v. 1891.

Gosse, E. *Robert Browning : Personalalia*. 1890.

**SHORTER SKETCHES.**

Birrell, A. *Obiter dicta*. v. 1. pp. 55-95. "On the alleged obscurity of Mr. Browning's poetry."..... 824.89

Cochrane, R. *Great thinkers*. pp. 257-270..... 920C2

Dowden, E. *Transcripts*. pp. 474-525. 804D6

Eminent persons. pp. 334-337..... 920E

Forman, H. B. *Our living poets*. pp. 103-152..... 821F

Lowell, J. R. *Collected works*..... 814.37

Quoted in several volumes. See index in v. 6.

Mabie, H. W. *Robert Browning*. pp. 99-137..... 804M

Stedman, E. C. *Nature of poetry*. Quoted frequently. See index..... 811S3

Also for reviews of Browning's poems, see *Atlantic monthly*, various volumes. See Index to Atlantic..... Ro51A

**ARTICLES IN PERIODICALS.**

Gosse, E. *The early writings of R. B. Century*, Dec. 1881, pp. 189.

Lang, A. *Mr. Robert Browning*. *Contemporary*, July, 1891, pp. 70-81.

Moscheles, F. *Browning's Asele*. *Scribner's magazine*, Sept. 1891, pp. 359-367.

Orr, Mrs. S. *The religious opinions of Browning*. *Contemporary*, Dec. 1891, pp. 876-892.

Robert Browning. *Littell's living age*, Sept. 1890, pp. 771-784. (From the *Church quarterly review*.)

**Printing.**

Drew, B. *Pens and types ; or, hints for those who write*, etc. 1889..... 655D

Jacobi, C. T. *A practical treatise on the art of typography*. 1890..... 655J

Johnson, J. *Typographia ; or, the printer's instructor*. 1824..... R655J

Mackellar, T. *The American printer*. 1889..... 655M

"Pi;" collection of sketches for printers. 1890..... 655P

Thomas, I. *The history of printing in America*. 2 v. 1874..... R655.137

*The Inland printer* (monthly) is received, as issued, for Reading Room.

**TYPE-SETTING MACHINES.**

*Iconographic encyclopedia*, v. 6, p. 391.

*Popular science monthly*, December, 1891, pp. 180-191. Article on type-casting machinery. by P. D. Ross.

**Business Manuals.**

Parsons, T. *Laws of business for United States and Canada*. 1890..... R657

*Book-keeping no mystery*. 1884..... 657D

O'Dea, C. *The practical book-keeper*. 1882..... 657D

Godwin, J. H. *Improved book-keeping and business manual*. 1892..... R657G

Haddow, J. *Commercial book-keeping*. 1886..... 657H

*How to become quick at figures*. 1886..... 657H

Hill, T. E. *Manual of social and business forms*. Latest revised edition. 1892..... R657H

Baker, C. E. *The foreign commercial correspondent*. 1888..... 658B

Campbell, R. *The importer's guide*. 1869..... R658C

Orton, H. D. *Business calculator*. 1881..... 658C

Hansford, J. E. *The business guide*. 1892..... 658M

Oates, G. *Tables of sterling exchange*. 1885..... R658C

Price, J. M. *Interest tables at 5 to 10 per cent*. 1887..... R658I

Rose, G. M. *A business treasury*. 1890..... 658I

Sampson, H. *History of advertising*. 1875..... 659S

See also books on cognate subjects : Typewriting, Shorthand, Copyright, etc.

