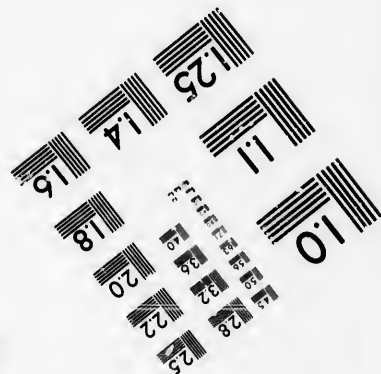
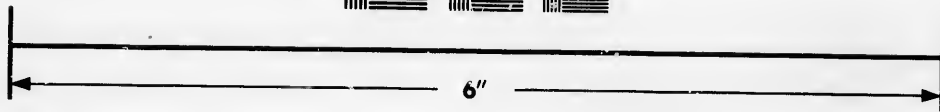
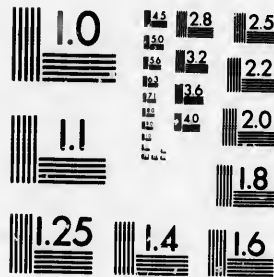


**IMAGE EVALUATION
TEST TARGET (MT-3)**



**Photographic
Sciences
Corporation**

23 WEST MAIN STREET
WEBSTER, N.Y. 14580
(716) 872-4503

1.5
1.8
2.0
2.2
2.5
2.8
3.2
3.6
4.0

**CIHM/ICMH
Microfiche
Series.**

**CIHM/ICMH
Collection de
microfiches.**



Canadian Institute for Historical Microreproductions / Institut canadien de microreproductions historiques

10
1.5
1.8
2.0
2.2
2.5
2.8
3.2
3.6
4.0

© 1986

Technical and Bibliographic Notes/Notes techniques et bibliographiques

The Institute has attempted to obtain the best original copy available for filming. Features of this copy which may be bibliographically unique, which may alter any of the images in the reproduction, or which may significantly change the usual method of filming, are checked below.

L'Institut a microfilmé le meilleur exemplaire qu'il lui a été possible de se procurer. Les détails de cet exemplaire qui sont peut-être uniques du point de vue bibliographique, qui peuvent modifier une image reproduite, ou qui peuvent exiger une modification dans la méthode normale de filmage sont indiqués ci-dessous.

- Coloured covers/
Couverture de couleur
- Covers damaged/
Couverture endommagée
- Covers restored and/or laminated/
Couverture restaurée et/ou pelliculée
- Cover title missing/
Le titre de couverture manque
- Coloured maps/
Cartes géographiques en couleur
- Coloured ink (i.e. other than blue or black)/
Encre de couleur (i.e. autre que bleue ou noire)
- Coloured plates and/or illustrations/
Planches et/ou illustrations en couleur
- Bound with other material/
Relié avec d'autres documents
- Tight binding may cause shadows or distortion along interior margin/
La reliure serrée peut causer de l'ombre ou de la distorsion le long de la marge intérieure
- Blank leaves added during restoration may appear within the text. Whenever possible, these have been omitted from filming/
Il se peut que certaines pages blanches ajoutées lors d'une restauration apparaissent dans le texte, mais, lorsque cela était possible, ces pages n'ont pas été filmées.
- Additional comments:/ [Printed ephemera] [3] p.
Commentaires supplémentaires:

- Coloured pages/
Pages de couleur
- Pages damaged/
Pages endommagées
- Pages restored and/or laminated/
Pages restaurées et/ou pelliculées
- Pages discoloured, stained or foxed/
Pages décolorées, tachetées ou piquées
- Pages detached/
Pages détachées
- Showthrough/
Transparence
- Quality of print varies/
Qualité inégale de l'impression
- Includes supplementary material/
Comprend du matériel supplémentaire
- Only edition available/
Seule édition disponible
- Pages wholly or partially obscured by errata slips, tissues, etc., have been refilmed to ensure the best possible image/
Les pages totalement ou partiellement obscurcies par un feuillet d'errata, une pelure, etc., ont été filmées à nouveau de façon à obtenir la meilleure image possible.

This item is filmed at the reduction ratio checked below/
Ce document est filmé au taux de réduction indiqué ci-dessous.

10X	12X	14X	16X	18X	20X	22X	24X	26X	28X	30X	32X
<input type="checkbox"/>	<input type="checkbox"/>	<input type="checkbox"/>	<input type="checkbox"/>	<input type="checkbox"/>	<input type="checkbox"/>	<input checked="" type="checkbox"/>	<input type="checkbox"/>	<input type="checkbox"/>	<input type="checkbox"/>	<input type="checkbox"/>	<input type="checkbox"/>

The copy filmed here has been reproduced thanks to the generosity of:

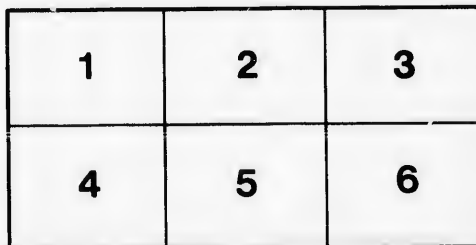
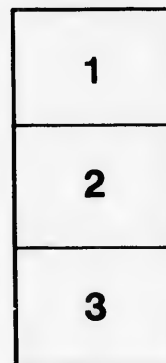
Library of the Public
Archives of Canada

The images appearing here are the best quality possible considering the condition and legibility of the original copy and in keeping with the filming contract specifications.

Original copies in printed paper covers are filmed beginning with the front cover and ending on the last page with a printed or illustrated impression, or the back cover when appropriate. All other original copies are filmed beginning on the first page with a printed or illustrated impression, and ending on the last page with a printed or illustrated impression.

The last recorded frame on each microfiche shall contain the symbol \rightarrow (meaning "CONTINUED"), or the symbol ∇ (meaning "END"), whichever applies.

Maps, plates, charts, etc., may be filmed at different reduction ratios. Those too large to be entirely included in one exposure are filmed beginning in the upper left hand corner, left to right and top to bottom, as many frames as required. The following diagrams illustrate the method:



L'exemplaire filmé fut reproduit grâce à la générosité de:

La bibliothèque des Archives
publiques du Canada

Les images suivantes ont été reproduites avec le plus grand soin, compte tenu de la condition et de la netteté de l'exemplaire filmé, et en conformité avec les conditions du contrat de filmage.

Les exemplaires originaux dont la couverture en papier est imprimée sont filmés en commençant par le premier plat et en terminant soit par la dernière page qui comporte une empreinte d'impression ou d'illustration, soit par le second plat, selon le cas. Tous les autres exemplaires originaux sont filmés en commençant par la première page qui comporte une empreinte d'impression ou d'illustration et en terminant par la dernière page qui comporte une telle empreinte.

Un des symboles suivants apparaîtra sur la dernière image de chaque microfiche, selon le cas: le symbole \rightarrow signifie "A SUIVRE", le symbole ∇ signifie "FIN".

Les cartes, planches, tableaux, etc., peuvent être filmés à des taux de réduction différents. Lorsque le document est trop grand pour être reproduit en un seul cliché, il est filmé à partir de l'angle supérieur gauche, de gauche à droite, et de haut en bas, en prenant le nombre d'images nécessaire. Les diagrammes suivants illustrent la méthode.

ails
du
modifier
une
page

rata
o

elure,
à

32X

TABULAR STATEMENT,

Shewing the Freight Rates charged by GREAT WESTERN RAILWAY COMPANY, from MONTREAL to Points West, as compared with Rates charged from HAMILTON to same Points, being, as far as the Grand Trunk is concerned, non-competing Points.

FROM MONTREAL TO	2d Class. 3d Class. per 100 lbs.		From HAMILTON to Same Station.		Rate paid by G. W. R. Comp'y for Steamers' Pro- portion of Through Freight		Rate received by G. W. R. Comp'y for their own Proportion of Through Freight		Shewing differ- ence against Hamilton Ship- pers, as under.			
					2d Class 3d Class		2d Class 3d Class				2d Class 3d Class	
					2d Class	3d Class	2d Class	3d Class			2d Class	3d Class
GALT	23½	18	14	11	15	12½	8½	5½	5½	5½		
PRESTON	23	18	16	12	15	12½	8	5½	8	6½		
HESPELER	23½	20	17	13	15	12½	8½	7½	8½	5½		
PARIS	22½	18	13	11	15	12½	7½	7½	5½	5½		
WOODSTOCK	27½	22	20	15	15	12½	12½	9½	7½	5½		
BEACHVILLE	27½	22	22	16	15	12½	12½	9½	9½	6½		
INGERSOLL	27½	24	23	17	15	12½	12½	11½	10½	5½		
STRATHROY	32½	27½	37	27	15	12½	17½	15	19½	12		
NEWBURY	35½	30	43	31	15	12½	20½	17½	22½	18½		
THAMESVILLE	35½	30	40	30	15	12½	20½	17½	19½	12½		
CHATHAM	35½	30	40	30	15	12½	20½	17½	19½	12½		

STATEMENT shewing the Freight Rates charged by G. W. R. Company, from Montreal to the under-mentioned Stations as compared with the rates from Hamilton to the same.

	Rates from MONTREAL.		Rates from HAMILTON.	
	2nd	3rd	2nd	3rd
	GUELPH	23½	20	19
LONDON	27½	24	23	19
SARNIA	35½	30	40	30
WINDSOR	35½	30	45	35

NOTE.—It should be observed that the above Statement is based on Classes simply as Classes, but the Great Western class many leading articles lower from Montreal than they do from Hamilton, as will be seen on the next page.

1855
(54)

M E M O R A N D U M,

Shewing the difference in the Rates of certain Goods carried by the Great Western Railway Company, from MONTREAL, as compared with the Rates from HAMILTON to same points on same Goods.

The highest classification from Montreal is First-Class; from Hamilton there are Double First-Class and One and a half First-Class.

TEA is carried by the Great Western, by water and rail, to CHATHAM for	35½c. per 100
From Hamilton to same point	50 c. "
Actually, charging the Hamilton trade 50 cents per 100 lbs. for what they get 20 cents per 100 lbs. for the same goods shipped from Montreal.	
REFINED SUGAR —an important article—is carried from Montreal to Chatham for	30 c. "
From Hamilton to same point	40 c. "
Being 10 cents less from Montreal than from Hamilton.	
NAILS are carried from Montreal to Chatham for	27½c. "
While from Hamilton the rate is	30 c. "
Being 2½ cents less from Montreal than Hamilton.	
IRON is carried from MONTREAL precisely at same rate as from Hamilton, viz.	30 c. per 100
The Great Western paying water carriage.	
CROCKERY is carried from Montreal to Strathroy for	27½c. "
" " " Hamilton	37 c. "
Being 9½ cents less from Montreal than from Hamilton.	
MOLASSES is carried from Montreal to Beachville at precisely same rates as from Hamilton, viz.	22 c. "
The Great Western paying the water carriage.	
TEA , Montreal to Beachville	27½c. "
Hamilton to Beachville	27 c. "
FISH IN BARRELS , Montreal to Woodstock	40 c. per bbl.
If sent from Hamilton, 300 lb @ 15c.	45 c. "
Less from Montreal than Hamilton, 5 cents.	
Montreal to Chatham	65 c. "
Hamilton to Chatham	90 c. "
Less from Montreal than Hamilton 25 cents.	
BAR IRON , Montreal to Strathroy	27½c. per 100
Hamilton to Strathroy	27 c. "
SPIKES , Montreal to Chatham	27½c. "
Hamilton to Chatham	30 c. "
Less from Montreal than from Hamilton, 2½ cents.	
CANADA PLATE , Montreal to Strathroy	27½c. "
Hamilton to Strathroy	27 c. "

NOTE.—In shewing the difference in the above Memorandum, as against Hamilton, the Water Carriage paid by the Great Western Railway Company of 1½ cents and 15 cents, should in all cases be added to shew the actual state of the case; for instance, "Refined Sugar, 10 cents against Hamilton" should be, adding Water Freight, "22½ cents," or 2 per cent, on the cost of such goods.

200821

MEMORANDUM shewing the Rates charged by the Great Western Railway Company for Freight on certain Goods from Montreal, by Water and Rail, to the undermentioned Points; also the Rates from Hamilton, on same Goods to same Points.

MONTREAL TO		HAMILTON TO		Difference after payment by the G. W. R. of Water Carriage.	Difference against Hamilton Shippers, adding Water Carriage.
					cts. per 100 lbs.
TEA	London	27½ cents per 100	30 cents per 100	2½c. against Hamilton.	17½
	Sarnia	35½ " "	50 " "	14½ " "	20½
	Windsor	35½ " "	55 " "	20 " "	35
NAILS	London	21½ " "	19 " "	" "	11½
	Sarnia	27½ " "	30 " "	2½ " "	15
	Windsor	27½ " "	55 " "	7½ " "	20
IRON	Sarnia	30 " "	30 " "	" "	12½
	Windsor	30 " "	35 " "	5 " "	17½
	London	24 " "	23 " "	" "	11½
CROCKERY	Guelph	20 " "	19 " "	" "	22½
	Sarnia	30 " "	40 " "	10 " "	27½
	Windsor	30 " "	23 " "	15 " "	11½
MOLASSES	London	24 " "	19 " "	" "	11½
	Guelph	20 " "	40 " "	10 " "	22½
	Sarnia	30 " "	45 " "	15 " "	27½
CANADA PLATE	Windsor	30 " "	45 " "	5 " "	17½
	London	24 " "	23 " "	" "	11½
	Sarnia	30 " "	40 " "	10 " "	22½
REFINED SUGAR	Windsor	35½ " "	45 " "	10 " "	22½

