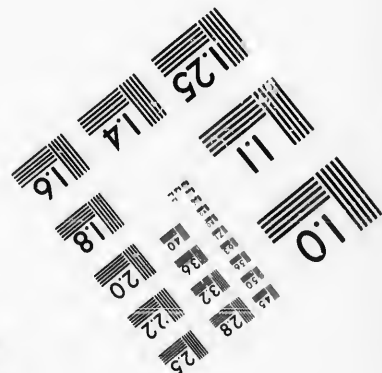
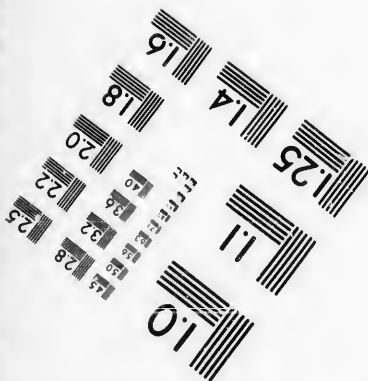
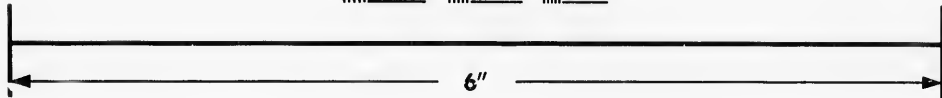
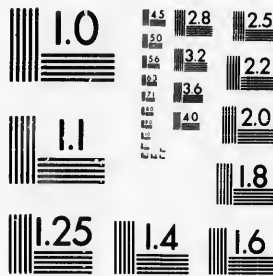


**IMAGE EVALUATION
TEST TARGET (MT-3)**



**Photographic
Sciences
Corporation**

23 WEST MAIN STREET
WEBSTER, N.Y. 14580
(716) 872-4503



**CIHM/ICMH
Microfiche
Series.**

**CIHM/ICMH
Collection de
microfiches.**



Canadian Institute for Historical Microreproductions / Institut canadien de microreproductions historiques

© 1987



Technical and Bibliographic Notes/Notes techniques et bibliographiques

The Institute has attempted to obtain the best original copy available for filming. Features of this copy which may be bibliographically unique, which may alter any of the images in the reproduction, or which may significantly change the usual method of filming, are checked below.

L'Institut a microfilmé le meilleur exemplaire qu'il lui a été possible de se procurer. Les détails de cet exemplaire qui sont peut-être uniques du point de vue bibliographique, qui peuvent modifier une image reproduite, ou qui peuvent exiger une modification dans la méthode normale de filmage sont indiqués ci-dessous.

- | | |
|--|--|
| <input type="checkbox"/> Coloured covers/
Couverture de couleur | <input type="checkbox"/> Coloured pages/
Pages de couleur |
| <input type="checkbox"/> Covers damaged/
Couverture endommagée | <input type="checkbox"/> Pages damaged/
Pages endommagées |
| <input type="checkbox"/> Covers restored and/or laminated/
Couverture restaurée et/ou pelliculée | <input type="checkbox"/> Pages restored and/or laminated/
Pages restaurées et/ou pelliculées |
| <input type="checkbox"/> Cover title missing/
Le titre de couverture manque | <input checked="" type="checkbox"/> Pages discoloured, stained or foxed/
Pages décolorées, tachetées ou piquées |
| <input type="checkbox"/> Coloured maps/
Cartes géographiques en couleur | <input type="checkbox"/> Pages detached/
Pages détachées |
| <input checked="" type="checkbox"/> Coloured ink (i.e. other than blue or black)/
Encre de couleur (i.e. autre que bleue ou noire) | <input checked="" type="checkbox"/> Showthrough/
Transparence |
| <input type="checkbox"/> Coloured plates and/or illustrations/
Planches et/ou illustrations en couleur | <input type="checkbox"/> Quality of print varies/
Qualité inégale de l'impression |
| <input type="checkbox"/> Bound with other material/
Relié avec d'autres documents | <input type="checkbox"/> Includes supplementary material/
Comprend du matériel supplémentaire |
| <input type="checkbox"/> Tight binding may cause shadows or distortion
along interior margin/
La reliure serrée peut causer de l'ombre ou de la
distorsion le long de la marge intérieure | <input type="checkbox"/> Only edition available/
Seule édition disponible |
| <input type="checkbox"/> Blank leaves added during restoration may
appear within the text. Whenever possible, these
have been omitted from filming/
Il se peut que certaines pages blanches ajoutées
lors d'une restauration apparaissent dans le texte,
mais, lorsque cela était possible, ces pages n'ont
pas été filmées. | <input type="checkbox"/> Pages wholly or partially obscured by errata
slips, tissues, etc., have been refilmed to
ensure the best possible image/
Les pages totalement ou partiellement
obscurcies par un feuillet d'errata, une pelure,
etc., ont été filmées à nouveau de façon à
obtenir la meilleure image possible. |
| <input checked="" type="checkbox"/> Additional comments: /
Commentaires supplémentaires: | [Printed ephemera] [3] p. |

This item is filmed at the reduction ratio checked below/
Ce document est filmé au taux de réduction indiqué ci-dessous.

10X	12X	14X	16X	18X	20X	22X	24X	26X	28X	30X	32X
						/					

The copy filmed here has been reproduced thanks to the generosity of:

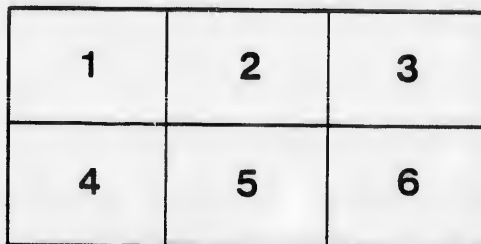
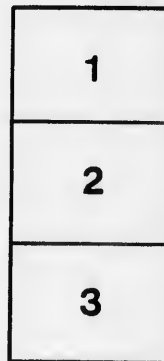
New Brunswick Museum
Saint John

The images appearing here are the best quality possible considering the condition and legibility of the original copy and in keeping with the filming contract specifications.

Original copies in printed paper covers are filmed beginning with the front cover and ending on the last page with a printed or illustrated impression, or the back cover when appropriate. All other original copies are filmed beginning on the first page with a printed or illustrated impression, and ending on the last page with a printed or illustrated impression.

The last recorded frame on each microfiche shall contain the symbol \rightarrow (meaning "CONTINUED"), or the symbol ∇ (meaning "END"), whichever applies.

Maps, plates, charts, etc., may be filmed at different reduction ratios. Those too large to be entirely included in one exposure are filmed beginning in the upper left hand corner, left to right and top to bottom, as many frames as required. The following diagrams illustrate the method:



L'exemplaire filmé fut reproduit grâce à la générosité de:

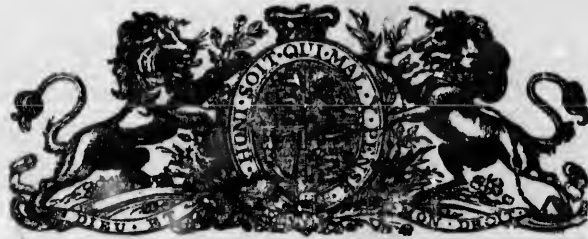
New Brunswick Museum
Saint John

Les images suivantes ont été reproduites avec le plus grand soin, compte tenu de la condition et de la netteté de l'exemplaire filmé, et en conformité avec les conditions du contrat de filmage.

Les exemplaires originaux dont la couverture en papier est imprimée sont filmés en commençant par le premier plat et en terminant soit par la dernière page qui comporte une empreinte d'impression ou d'illustration, soit par le second plat, selon le cas. Tous les autres exemplaires originaux sont filmés en commençant par la première page qui comporte une empreinte d'impression ou d'illustration et en terminant par la dernière page qui comporte une telle empreinte.

Un des symboles suivants apparaîtra sur la dernière image de chaque microfiche, selon le cas: le symbole \rightarrow signifiant "A SUIVRE", le symbole ∇ signifiant "FIN".

Les cartes, planches, tableaux, etc., peuvent être filmés à des taux de réduction différents. Lorsque le document est trop grand pour être reproduit en un seul cliché, il est filmé à partir de l'angle supérieur gauche, de gauche à droite, et de haut en bas, en prenant le nombre d'images nécessaire. Les diagrammes suivants illustrent la méthode.



- - Jubilee - -

Thanksgiving Service,

Of all Christian Churches on the occasion of the

60th. Anniversary

— OF THE —

Queen's Accession,

JUNE 20th. 1897.

ST. ANDREW'S RINK.

2.30 P. M.

Saint John, N. B., Canada.

FORM OF SERVICE.

OPENING HYMN.

Hark! the song of Jubilee,
Loud as mighty thunders roar;
Or the fulness of the sea,
When it breaks upon the shore.
Hallelujah! for the Lord
God omnipotent shall reign:
Hallelujah! let the word
Echo round the earth and main.

Hallelujah!—hark! the sound,
From the depths unto the skies,
Wakes above, beneath, around,
All creation's harmonies:
See Jehovah's banners furl'd,
Sheath'd his sword: he speaks—'tis done;
And the kingdoms of this world
Are the kingdoms of his Son.

He shall reign from pole to pole
With illimitable sway;
He shall reign, when, like a scroll,
Yonder heavens have passed away.
Then the end: beneath his rod
Man's last enemy shall fall;
Hallelujah! Christ in God,
God in Christ, is all in all.

Words of Welcome,

Rev. J. de Soyres.

Invocation,

The Rev. J. W. Clarke.

Address,

by the Mayor of St. John.

HYMN.

All people that on earth do dwell, Know that the Lord is God indeed;
Sing to the Lord with cheerful voice: Without our aid he did us make;
Him serve with fear, his praise forth tell, We are his flock, he doth us feed;
Come ye before him and rejoice. And for his sheep he doth us take.

O enter then his gates with praise,
Approach with joy his courts unto:
Praise, laud, and bless his name always,
For it is seemly so to do.

Reading from Scripture.

Psalm LXXII.- Rev. L. G. Macneil.

Address,

Rev. John Read.

HYMN.

O God, our help in ages past,
Our hope for years to come,
Our shelter from the stormy blast,
And our eternal home.

Under the shadow of thy throne,
Still may we dwell secure;
Sufficient is thine arm alone,
And our defence is sure.

Before the hills in order stood,
Or earth received her frame,
From everlasting thou art God,
To endless years the same.

Address,

Rev. Dr. Carey.

Prayer,

Rev. R. P. McKim.

National Anthem.

God save our gracious Queen,
Long live our noble Queen,
God save the Queen:
Send her victorious,
Happy and glorious,
Long to reign over us;
God save the Queen!

Thou who for threescore years,
'Mid sunshine, cloud and tears,
Hast kept our Queen:
Still be her guide and stay,
Through life's uncertain way;
Till dawn the perfect day,
God save the Queen!

Thy choicest gifts in store
On her be pleased to pour;
Long may she reign:
May she defend our laws,
And ever give us cause
To sing with heart and voice,
God save the Queen!

Benediction,

Rev. Dr. Pope.

