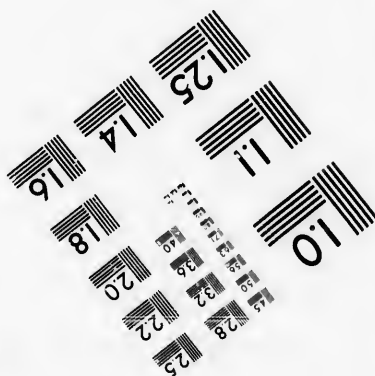
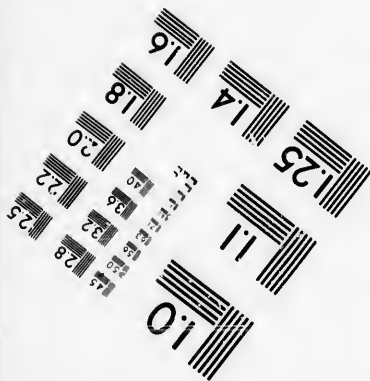
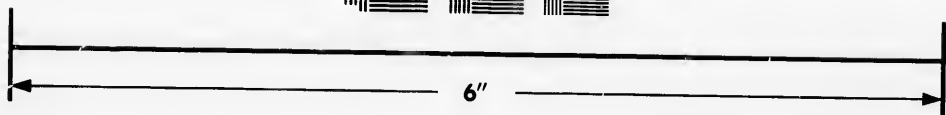
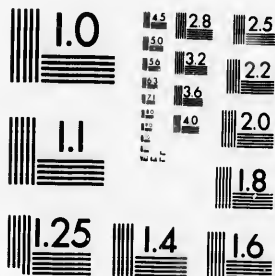


**IMAGE EVALUATION
TEST TARGET (MT-3)**



**Photographic
Sciences
Corporation**

23 WEST MAIN STREET
WEBSTER, N.Y. 14580
(716) 872-4503

**CIHM/ICMH
Microfiche
Series.**

**CIHM/ICMH
Collection de
microfiches.**



Canadian Institute for Historical Microreproductions / Institut canadien de microreproductions historiques

© 1986

Technical and Bibliographic Notes/Notes techniques et bibliographiques

The Institute has attempted to obtain the best original copy available for filming. Features of this copy which may be bibliographically unique, which may alter any of the images in the reproduction, or which may significantly change the usual method of filming, are checked below.

L'Institut a microfilmé le meilleur exemplaire qu'il lui a été possible de se procurer. Les détails de cet exemplaire qui sont peut-être uniques du point de vue bibliographique, qui peuvent modifier une image reproduite, ou qui peuvent exiger une modification dans la méthode normale de filmage sont indiqués ci-dessous.

- Coloured covers/
Couverture de couleur
- Covers damaged/
Couverture endommagée
- Covers restored and/or laminated/
Couverture restaurée et/ou pelliculée
- Cover title missing/
Le titre de couverture manque
- Coloured maps/
Cartes géographiques en couleur
- Coloured ink (i.e. other than blue or black)/
Encre de couleur (i.e. autre que bleue ou noire)
- Coloured plates and/or illustrations/
Planches et/ou illustrations en couleur
- Bound with other material/
Relié avec d'autres documents
- Tight binding may cause shadows or distortion along interior margin/
La reliure serrée peut causer de l'ombre ou de la distorsion le long de la marge intérieure
- Blank leaves added during restoration may appear within the text. Whenever possible, these have been omitted from filming/
Il se peut que certaines pages blanches ajoutées lors d'une restauration apparaissent dans le texte, mais, lorsque cela était possible, ces pages n'ont pas été filmées.

- Coloured pages/
Pages de couleur
- Pages damaged/
Pages endommagées
- Pages restored and/or laminated/
Pages restaurées et/ou pelliculées
- Pages discoloured, stained or foxed/
Pages décolorées, tachetées ou piquées
- Pages detached/
Pages détachées
- Showthrough/
Transparence
- Quality of print varies/
Qualité inégale de l'impression
- Includes supplementary material/
Comprend du matériel supplémentaire
- Only edition available/
Seule édition disponible
- Pages wholly or partially obscured by errata slips, tissues, etc., have been refilmed to ensure the best possible image/
Les pages totalement ou partiellement obscurcies par un feuillet d'errata, une pelure, etc., ont été filmées à nouveau de façon à obtenir la meilleure image possible.

Additional comments:
Commentaires supplémentaires:

[Printed ephemera] [4] p. There are some creases in the middle of the pages.

This item is filmed at the reduction ratio checked below/
Ce document est filmé au taux de réduction indiqué ci-dessous.

10X	12X	14X	16X	18X	20X	22X	24X	26X	28X	30X	32X
									/		

The copy filmed here has been reproduced thanks to the generosity of:

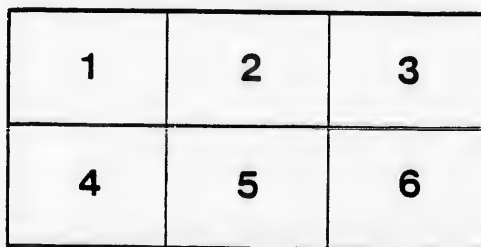
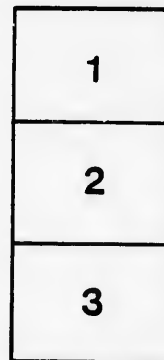
D. B. Weldon Library
University of Western Ontario
(Regional History Room)

The images appearing here are the best quality possible considering the condition and legibility of the original copy and in keeping with the filming contract specifications.

Original copies in printed paper covers are filmed beginning with the front cover and ending on the last page with a printed or illustrated impression, or the back cover when appropriate. All other original copies are filmed beginning on the first page with a printed or illustrated impression, and ending on the last page with a printed or illustrated impression.

The last recorded frame on each microfiche shall contain the symbol \rightarrow (meaning "CONTINUED"), or the symbol ∇ (meaning "END"), whichever applies.

Maps, plates, charts, etc., may be filmed at different reduction ratios. Those too large to be entirely included in one exposure are filmed beginning in the upper left hand corner, left to right and top to bottom, as many frames as required. The following diagrams illustrate the method:



L'exemplaire filmé fut reproduit grâce à la générosité de:

D. B. Weldon Library
University of Western Ontario
(Regional History Room)

Les images suivantes ont été reproduites avec le plus grand soin, compte tenu de la condition et de la netteté de l'exemplaire filmé, et en conformité avec les conditions du contrat de filmage.

Les exemplaires originaux dont la couverture en papier est imprimée sont filmés en commençant par le premier plat et en terminant soit par la dernière page qui comporte une empreinte d'impression ou d'illustration, soit par le second plat, selon le cas. Tous les autres exemplaires originaux sont filmés en commençant par la première page qui comporte une empreinte d'impression ou d'illustration et en terminant par la dernière page qui comporte une telle empreinte.

Un des symboles suivants apparaîtra sur la dernière image de chaque microfiche, selon le cas: le symbole \rightarrow signifie "A SUIVRE", le symbole ∇ signifie "FIN".

Les cartes, planches, tableaux, etc., peuvent être filmés à des taux de réduction différents. Lorsque le document est trop grand pour être reproduit en un seul cliché, il est filmé à partir de l'angle supérieur gauche, de gauche à droite, et de haut en bas, en prenant le nombre d'images nécessaire. Les diagrammes suivants illustrent la méthode.

Ladies! the only way to get help is through the "Free Press" Want Column.

READ AND REFLECT.

NOTICE TO OUR PATRONS—If the individual members of an audience would stop to think for just an instant, they would undoubtedly appreciate the fact that the habit of rising from their seats and leaving the theatre before the curtain falls, is a most annoying one, and one that should be stopped. We therefore beg our audiences to kindly remain in their seats until the close of the performance.

Evenings—doors open at 7:30; curtain rises at 8:15 sharp. Matinees—doors open at 1:30; curtain rises at 2:30 sharp.

Plan opens for each attraction two days in advance.



Seats can be secured by mail, telegraph or telephone. Telephone 735.
Physicians are requested to register at the Box Office, leaving seat number, so this will enable Ushers to find them if called for, without disturbing the audience.
Carriages can be ordered at the Box Office or of the Chief Usher.

Please report to the management any inattention on the part of the employees. Overcoats, packages and umbrellas checked for a small charge.

For all lost articles apply at Box Office. Opera Glasses can be rented by applying to Ushers or at Box Office.

It is strange, but there is a class of people that seem to take an intense delight in bespattering the floor with tobacco juice and in being boisterous and using profane language. These people should know at once that the courts authorize their immediate expulsion, should the management see fit to exercise its rights.

LONDON, ONT.

BETWEEN the Acts, and after the Opera is over go to the

OPERA + CIGAR STORE

For Cigars, Cigarettes, Etc
LOUIS RISK.

W. T. STRONG,

Dispensing +

+ + **Chemist**

184 Dundas Street,

LONDON - - - ONTARIO.

Rivard

LEADS THEM ALL.

PRICES WILL TELL.

Furs! Furs! Furs!

IN ALL THE LATEST STYLES.

Hats! Hats! Hats!

Latest New York and English Styles.

The Cheapest House in the City.

A Pleasure to Show Goods.

400 Richmond St., LONDON, ONT.

J. WHITNEY LESSEE AND MANAGER.
A. E. ROOTE REPRESENTATIVE.
FRED. L. EVANS DIRECTOR OF ORCHESTRA.
GUS. SCHABACKER STAGE MANAGER.
JAMES LAMB CHIEF USHER.

Wednesday Ev'g, Dec. 21st, 1892.

PROGRAMME.

TORONTO UNIVERSITY
GLEE + CLUB

— ASSISTED BY THE —

College Banjo and Guitar Club

— AND —

MANDOLIN QUINTETTE

— UNDER THE AUSPICES OF THE —

LONDON! ATHLETIC CLUB.

(Programme continued on Page 3.)

J. S. ASHPLANT.

Telephone 881.

J. S. BROWN

HANDSOME XMAS SLIPPERS

For Ladies, Gentlemen, and Children,

— AT —

ASHPLANT & BROWN'S

A worthy gift should have in it the substantial elements of quality, so that it need not see its day of usefulness limited to the holiday season.

FOR GOOD **FOOTWEAR** TRY THE

CENTRAL SHOE STORE.

145 Dundas Street, (D. Regan's old stand.)

HE'S ALL RIGHT.

There is no better time than now to select your Holiday Presents. Make up your mind to get something nice in our line this year, for yourself and friends. What is Home without a M—usical Instrument? You can buy everything Musical, of the best quality, at "Colwell's Popular Music House," 171 Dundas Street. We make a specialty of the genuine Heintzman Pianos, Goderich Organs and White Sewing Machines; but can supply any others made. We also have an endless variety of small Musical Instruments, Strings, Fittings, Music Books, Music Holders, etc. We are offering reduced prices in all departments, and guarantee everything we sell Telephone 97 or 87.

CHAS. F. COLWELL,

Official Issuer of Marriage Licenses

The only place in the City to get the latest

SCARFS.

Burns

The Furnisher.

A MAN

Wants to see you Between Acts

— AT —

Jerry McDonald's

Across the Road.

If you want the best take the "Free Press," all the news.

Burns

* * **SAYS**
That the D B. Sag Suit
Will lead this Fall.

AND HE IS RIGHT.

GREAT PRIZE SALE

Every Cash Customer buying One Dollar's
worth or more of

WALL PAPER,

WINDOW SHADES,

CORNICE POLES,

ARTISTS' MATERIALS,

PICTURE FRAMES,

PICTURES,

ETC., ETC., ETC.

Stands the chance of securing a Prize worth from \$1.00
to \$20.00 according to amount of purchase.

E. N. HUNT,
190 DUNDAS ST., LONDON.

Attractions Booked.

A partial list of the attractions that will follow in the
course of the season includes—

Theodore Thomas' Orchestra; Private Secretary;
Robert Mantell; C. B. Hanford, in a grand spectacular
production of Julius Caesar; Conrild: Good Old Times;
Stowaway; Gus Hills' World of Novelties; Rosina Vokes;
Tuxedo; After Dark; Jerry; James O'Neill; Margaret
Mather; T. E. Shea; Katharina Rober; Ezra Kendall;
Lillian Lewis; Tar and Tartar; and many others of the
strongest attractions on the road.

NEXT ATTRACTION.

Monday Evening, December 26th

A GREAT EVENT.

Only Appearance of the Unrivalled

Chicago Orchestra

Under the Direction of

THEODORE THOMAS

65—MUSICIANS—65

SOLOISTS.

SOPRANO:

HARP:

AGNES THOMSON.

ED. SCHUECKER.

PRICES: 50c., \$1 and \$1.50.

Plan open at Box Office to-morrow morning at 9 o'clock.

Marshall's * Mammoth * Livery

IS THE LARGEST AND THE OLDEST
ESTABLISHMENT IN THE CITY.

DOES THE LEADING BUSINESS IN

Carriages, Cabs, Coupes, *
* Victorias, Busses, Etc.

Every kind of Conveyance can be had there on the
shortest notice, by Telephone No. 436.

JAS. S. MARSHALL, Proprietor.

Dundas Street.

London, Ont.

The Elegant Furniture

You see on the stage this evening,
is from the establishment of

JAMES KILGOUR,

—MANUFACTURER OF—

Fine Parlor Suites, Easy Chairs,
and Turkish Lounges, made to order only.

353 RICHMOND STREET

For Fashionable
WELL MADE SUITS

... CALL ON ...

Burns

The Tailor,

Dundas Street.

Artistic * Floral * Design

EITHER WEDDING, PRESENTATION, DINNER TABLE, OR FUNERAL.

GO TO **DILLOWAY,**

The Leading Florist.

248 Dundas Street.

Choicest Cut Flowers Always on Hand.

TELEPHONE 597.

If you see it in the "London Free Press" it is so.

◀ AFTER THE PERFORMANCE ▶
—STOP AT—

Harry McKenna's,

Choice Havana Cigars &
* * * Tobacco Sundries.

226 Dundas Street.

Always Open After Performance.

SMITH BROS.

Plumbers,
Steam and Gas Fitters.

ESTIMATES FURNISHED ON APPLICATION.

All Work Warranted. Terms Moderate.

376 RICHMOND STREET.
(Opposite Masonic Temple.)

Telephone No. 538.

THE TECUMSEH,

London, Ontario.



Leading Hotel of Western Ontario.

Large Sample Rooms Free of Charge.
Baggage and Passenger Elevator.

Only one Block from the Grand Opera House.

C. W. DAVIS,
PROPRIETOR.

White · Sulphur · Springs · Baths
FAMOUS HEALTH RESORT.
The Saratoga of Canada.
IN CONNECTION WITH THE HOTEL.

Great Attraction to Visitors Seeking Health.
C. W. DAVIS, Treasurer. A. D. HOLMAN, Manager

THE LATEST ENGLISH +
Collars, · Cuffs · and · Shirts.
ALL SIZES ALWAYS IN STOCK.

Burns

DUNDAS STREET.

PROGRAMME CONTINUED.

PART I.

1. "Soldier's Chorus" (from Faust).....Gounod
UNIVERSITY GLEE CLUB.
2. Vocal Solo—"Norman's Tower".....Lohr
MR. E. W. SCHUCH.
3. March—"Varsity".....Smedley
BANJO AND GUITAR CLUB.
4. Chorus—(a) "Beim Liebchen zu Haus".....Pfeil
(b) "The Man of Thessaly".....Macdougall
UNIVERSITY GLEE CLUB.
5. Valse—"Chequita".....Ricci
MANDOLINS AND GUITARS.
6. Song—"Carissima".....Ohnet
MR. LAURIE ROYD, '85, Obligato Chorus by the Glee Club.
7. Banjo Solo—"Galop di Concerto".....Glynn
MR. GEO. F. SMEDLEY.
8. Part Songs—(a) "Wanderer's Night Song".....Lens
(b) "Cloud Capped Towers".....Stevens
UNIVERSITY GLEE CLUB.

(Programme Continued on Page 4).

The bent pin generally carries its point, so do Beltz's Hats.

E. Beltz, 144 Dundas St.

LEADING FASHIONABLE HATTER & FURRIER.

FINE QUALITY GOLD MEDAL

HATS. | FURS.

A Messenger Boy's Diary.

Monday—hired. Tuesday—tired. Wednesday—fired.

—OUR FURS—

First Season—pleased; Second Season—delighted; Third Season—
Most satisfactory article you ever owned.

THE LEADING JEWELRY HOUSE
OF LONDON,

—FOR—
Diamonds, Watches, ·
· · and Fine Jewelry.

OPERA GLASSES FOR RENT.
THOS. GILLEAN,
402 Richmond Street.
Issuer of Marriage Licenses.

For Fine Finished Artistic Photos
—GO TO—

Westlake's *
* Famous Studio

201 Dundas Street.

Get the Latest Novelties:
Photo Etchings and Artistic Finish.

STUDIO ALL ON GROUND FLOOR.

City Views can be had. Phone 571.

Wallace's Dining Hall
AND CONFECTIONERY.

384 Richmond Street.

Lunches at all hours.
Hot Tea and Coffee.
Oysters in every style.
Choice Cakes,
Candies, Etc.

GIVE US A CALL

OFFICE RESTAURANT

Opposite the Masonic Temple, Richmond St.

CHOICE WINES,
LIQUORS, ALES,
CIGARS, ETC.

Restaurant on the European Plan.
OYSTERS IN EVERY STYLE.

D. SARE,
Proprietor.

Look out for the "London Free Press" on all early morning Trains.

VASELINE.

EVERYBODY knows the great value of this remedy in the household, but everybody does not know that the imitations of it, which some second class druggists dishonorably palm off on their customers, have little or no value. What should be understood by the public is, that it is not a mere question of comparative value between "Vaseline" and the imitations, but that the imitations do not effect the wonderful healing results of the world renowned "Vaseline," and that they are not the same thing nor made in the same way. Besides this, many of the imitations are harmful, irritant and not safe to use, while true Vaseline is perfectly harmless.

Perfect safety therefore lies in buying only original packages put up by and marked with our name.

CHESEBROUGH M'FG CO.

FLOWERS ❀

—FOR—

OPERA OR BALL

—AT—

GAMMAGE'S

DeWald Block, 213 Dundas Street.

FRESH EVERY DAY.

TELEPHONE 807.

THE PLAN ❀

For the Unrivalled

THEODORE ❀

❀ ❀ **THOMAS'**

Orchestra

Will Open at

❀ **BOX OFFICE,** ❀

To-morrow Morning, at 9 O'Clock.

PRICES: 50c., \$1 and \$1.50.

LADIES' TAILOR-MADE COSTUMES & RIDING HABITS.

Burns

154 Dundas Street.

PROGRAMME CONTINUED.

PART II.

1. Glee—"The Owl and the Pussy Cat"..... *DeKoven*
UNIVERSITY GLEE CLUB.
2. Patrol Characteristic—"Pride of the South"..... *Lansing*
BANJO AND GUITAR CLUB.
3. Vocal Solo—"Come Where My Love Lies Dreaming".... *Foster*
MR. GEORGE TAYLOR.
4. Part Song—"Simple Simon"..... *Macy*
Scene I.—His Name. Scene II.—Simon's March and his meeting with the Crafty Vendor of Pies. Scene III.—Simon's cheeky and hopeless request. The Pieman's prompt and startling question. Scene IV.—Simon's humiliating confession. Moral.
5. Duet—"Pizzicato" (from Silvia ballet)..... *Delibes*
MESSRS. GEO. F. SMEDLEY AND GILBERT ROYCE, '04.
6. Duet—"The Old Brigade"..... *Barri*
MESSRS. E. W. SCHUCH AND GEORGE TAYLOR.
7. Part Songs—(a) "Serenade".....
Obligate by W. J. KNOX, '04.
(b) "Bill of Fare"..... *Zoellner*
UNIVERSITY GLEE CLUB.

- R. H. BARKER, B.A. HON. PRESIDENT.
W. R. PERCY PARKER, '93 PRESIDENT.
A. L. McALLISTER, '93, SECRETARY AND BUSINESS MANAGER.
S. FAIRCLOTH, '04, TREASURER.
W. R. P. PARKER, ACCOMPANISTS.
W. H. HARGRAFF,
E. W. SCHUCH, CONDUCTOR.

Opera Glasses can be rented by applying to Ushers or at Box Office.

❀ **THE PIANO** ❀

Used in the Orchestra is from the

GERHARD HEINTZMAN CO.

69 and 75 Sherbourne St., Toronto.

LONDON WAREROOM: 226 DUNDAS STREET.

W. T. STRONG,

Dispensing *

* * Chemist

184 Dundas Street,

LONDON, - - - ONTARIO.

Parisian Steam Laundry

73 and 75 DUNDAS ST.



Laundry work transferred free of charge to and from Toronto, Hamilton, Brantford, Woodstock, Stratford, Guelph, London, St. Thomas, Chatham, Windsor and Sarnia.

J. K. SPRY, Manager.

THE PLAN ❀

For the Unrivalled

THEODORE ❀

❀ ❀ **THOMAS'**

Orchestra

Will Open at

❀ **BOX OFFICE,** ❀

To-morrow Morning, at 9 O'Clock.

PRICES: 50c., \$1 and \$1.50.

