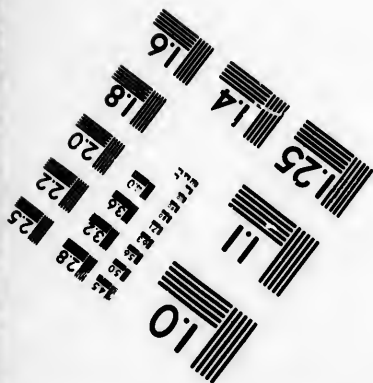
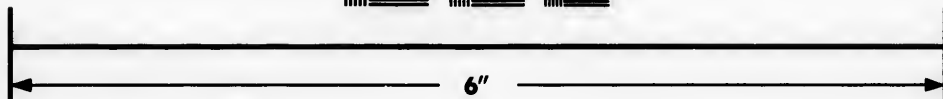
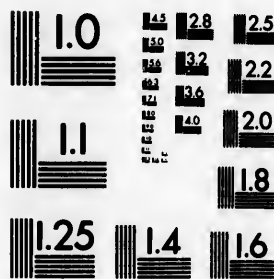


**IMAGE EVALUATION
TEST TARGET (MT-3)**



**Photographic
Sciences
Corporation**

23 WEST MAIN STREET
WEBSTER, N.Y. 14580
(716) 872-4503

**CIHM/ICMH
Microfiche
Series.**

**CIHM/ICMH
Collection de
microfiches.**



Canadian Institute for Historical Microreproductions / Institut canadien de microreproductions historiques

© 1985

Technical and Bibliographic Notes/Notes techniques et bibliographiques

The Institute has attempted to obtain the best original copy available for filming. Features of this copy which may be bibliographically unique, which may alter any of the images in the reproduction, or which may significantly change the usual method of filming, are checked below.

L'Institut a microfilmé le meilleur exemplaire qu'il lui a été possible de se procurer. Les détails de cet exemplaire qui sont peut-être uniques du point de vue bibliographique, qui peuvent modifier une image reproduite, ou qui peuvent exiger une modification dans la méthode normale de filmage sont indiqués ci-dessous.

- | | |
|---|---|
| <input type="checkbox"/> Coloured covers/
Couverture de couleur | <input type="checkbox"/> Coloured pages/
Pages de couleur |
| <input type="checkbox"/> Covers damaged/
Couverture endommagée | <input checked="" type="checkbox"/> Pages damaged/
Pages endommagées |
| <input type="checkbox"/> Covers restored and/or laminated/
Couverture restaurée et/ou pelliculée | <input checked="" type="checkbox"/> Pages restored and/or laminated/
Pages restaurées et/ou pelliculées |
| <input type="checkbox"/> Cover title missing/
Le titre de couverture manque | <input checked="" type="checkbox"/> Pages discoloured, stained or foxed/
Pages décolorées, tachetées ou piquées |
| <input type="checkbox"/> Coloured maps/
Cartes géographiques en couleur | <input type="checkbox"/> Pages detached/
Pages détachées |
| <input type="checkbox"/> Coloured ink (i.e. other than blue or black)/
Encre de couleur (i.e. autre que bleue ou noire) | <input checked="" type="checkbox"/> Showthrough/
Transparence |
| <input type="checkbox"/> Coloured plates and/or illustrations/
Planches et/ou illustrations en couleur | <input type="checkbox"/> Quality of print varies/
Qualité inégale de l'impression |
| <input type="checkbox"/> Bound with other material/
Relié avec d'autres documents | <input type="checkbox"/> Includes supplementary material/
Comprend du matériel supplémentaire |
| <input type="checkbox"/> Tight binding may cause shadows or distortion along interior margin/
La reliure serrée peut causer de l'ombre ou de la distorsion le long de la marge intérieure | <input type="checkbox"/> Only edition available/
Seule édition disponible |
| <input type="checkbox"/> Blank leaves added during restoration may appear within the text. Whenever possible, these have been omitted from filming/
Il se peut que certaines pages blanches ajoutées lors d'une restauration apparaissent dans le texte, mais, lorsque cela était possible, ces pages n'ont pas été filmées. | <input type="checkbox"/> Pages wholly or partially obscured by errata slips, tissues, etc., have been refilmed to ensure the best possible image/
Les pages totalement ou partiellement obscurcies par un feuillet d'errata, une pelure, etc., ont été filmées à nouveau de façon à obtenir la meilleure image possible. |
| <input checked="" type="checkbox"/> Additional comments: /
Commentaires supplémentaires: | [Printed ephemera] 1 sheet (verso blank). There is a crease in the middle of the page. |

This item is filmed at the reduction ratio checked below/
Ce document est filmé au taux de réduction indiqué ci-dessous.

10X	12X	14X	16X	18X	20X	22X	24X	26X	28X	30X	32X
					✓						

The c
to the

The b
possi
of the
filming

Origina
begin
the in
sion,
other
first p
sion,
or illu

The b
shall
TINU
which

Maps
differ
entire
begin
right
requir
metho

The copy filmed here has been reproduced thanks to the generosity of:

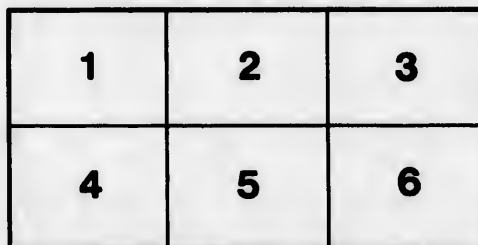
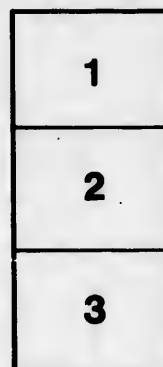
Douglas Library
Queen's University

The images appearing here are the best quality possible considering the condition and legibility of the original copy and in keeping with the filming contract specifications.

Original copies in printed paper covers are filmed beginning with the front cover and ending on the last page with a printed or illustrated impression, or the back cover when appropriate. All other original copies are filmed beginning on the first page with a printed or illustrated impression, and ending on the last page with a printed or illustrated impression.

The last recorded frame on each microfiche shall contain the symbol \rightarrow (meaning "CONTINUED"), or the symbol ∇ (meaning "END"), whichever applies.

Maps, plates, charts, etc., may be filmed at different reduction ratios. Those too large to be entirely included in one exposure are filmed beginning in the upper left hand corner, left to right and top to bottom, as many frames as required. The following diagrams illustrate the method:



L'exemplaire filmé fut reproduit grâce à la générosité de:

Douglas Library
Queen's University

Les images suivantes ont été reproduites avec le plus grand soin, compte tenu de la condition et de la netteté de l'exemplaire filmé, et en conformité avec les conditions du contrat de filmage.

Les exemplaires originaux dont la couverture en papier est imprimée sont filmés en commençant par le premier plat et en terminant soit par la dernière page qui comporte une empreinte d'impression ou d'illustration, soit par le second plat, selon le cas. Tous les autres exemplaires originaux sont filmés en commençant par la première page qui comporte une empreinte d'impression ou d'illustration et en terminant par la dernière page qui comporte une telle empreinte.

Un des symboles suivants apparaîtra sur la dernière image de chaque microfiche, selon le cas: le symbole \rightarrow signifie "A SUIVRE", le symbole ∇ signifie "FIN".

Les cartes, planches, tableaux, etc., peuvent être filmés à des taux de réduction différents. Lorsque le document est trop grand pour être reproduit en un seul cliché, il est filmé à partir de l'angle supérieur gauche, de gauche à droite, et de haut en bas, en prenant le nombre d'images nécessaire. Les diagrammes suivants illustrent la méthode.

errata
to

pelure,
n à

e page.

32X

CANADIAN COURANT EXTRA.

MONTREAL, MONDAY, NOVEMBER 24, 1828.

PROVINCIAL PARLIAMENT OF LOWER-CANADA.

LEGISLATIVE COUNCIL CHAMBER,
QUEBEC, November 21, 1828.

This day, at two o'clock, His Excellency SIR JAMES KEMPT came down in State to the Legislative Council Chamber, and being seated on the Throne; the Gentleman Usher of the Black Rod was sent down to the House of Assembly to command their attendance before His Excellency, and that House being come up, the Speaker of the Legislative Council said :

Gentlemen of the Assembly.

"I am commanded by His Excellency to inform you that He does not see fit to declare the causes for which He has summoned this Provincial Parliament, until there be a Speaker of the Assembly, duly elected and approved. And I am further commanded to enquire whether you have proceeded to the Election of a Speaker; and, if you have, upon whom your choice has fallen."

To which Mr. Papineau replied :

May it please your Excellency,

"In obedience to His Majesty's commands, the House of Assembly has proceeded to the Election of a Speaker, and I am the person upon whom their choice has fallen. I respectfully pray that it may please your Excellency to give your approbation to their choice."

Upon which the Speaker of the Legislative Council said,

Mr. Papineau,

"I am commanded by His Excellency to acquaint you that He approves the choice which the Assembly has made of you to be their Speaker, and, relying upon your loyalty, talents and discretion, He doth allow and confirm your election."

Mr. Papineau then made the usual claim to the privileges of the Assembly, to which His Excellency's assent was given in the accustomed form.

His Excellency was then pleased to open the Session with the following Speech :

*Gentlemen of the Legislative Council,
Gentlemen of the House of Assembly,*

His Majesty having been most graciously pleased to confide to me the Government of this important Colony, it affords me great satisfaction to meet you in Provincial Parliament.

Placed in a situation of so much importance, at a period of peculiar difficulty, I cannot but feel that very arduous duties are imposed upon me; duties indeed, which I should despair of being able to discharge, to the satisfaction of His Majesty and his faithful and loyal subjects the Inhabitants of this Province, if I did not look forward, with a sanguine hope, to the enjoyment of your confidence, and your cordial co-operation in my Administration of the Government.

Without a good understanding between the different Branches of the Legislature, the Public Affairs of the Colony cannot prosper; the evils, which are now experienced, cannot be effectually cured; the prosperity and welfare of his Majesty's Canadian subjects cannot be promoted; and you may therefore believe that no exertions will be spared on my part, to promote conciliation, by measures in which the undoubted prerogatives of the Crown, and your Constitutional Privileges, will be equally respected.

His Majesty's Government has, however, relieved me from the responsibility attendant upon any measures to be adopted for the adjustment of the financial difficulties that have unfortunately occurred; and I shall take an early opportunity of conveying to you by Message, a communication from His Majesty, which I have been specially commanded to make to you upon the subject of the appropriation of the Provincial Revenue.

It will be my duty to lay at the same time before you, the views of his Majesty's Government upon other topics connected with the Government of this Province, to which the attention of the Ministers of the Crown has been called:— You will see in them proofs of the earnest desire of His Majesty's Government, to provide, as far as may be practicable, an effectual remedy for any case of real grie-

vance; and you may rely on my ordering you every assistance towards the elucidation of any questions which may arise for discussion in the course of your proceedings.

Gentlemen of the House of Assembly—

I shall direct the Accounts of the Provincial Revenue and Expenditure for the last two years, to be laid before you, as soon as possible, with every explanation respecting them, which it is in my power to afford you.

Gentlemen of the Legislative Council,

Gentlemen of the House of Assembly,

Relying on your zeal and diligence in the discharge of your Legislative Duties, I feel persuaded that you will give your immediate attention to the renewal of such useful Acts as may have recently expired; and, indeed, to all matters of Public interest that may appear to be of pressing necessity and importance.

Possessing, as yet, but an imperfect knowledge of the great interests of the Province, and the wants of its inhabitants, I refrain, at the present time, from recommending to you measures of Public improvement, which it will be my duty to bring under your consideration at a future day.—In all countries, however, good roads and other internal communications;—a general system of Education, established upon sound principles;—and a well-organised, efficient Militia Force, are found to be so conducive to the prosperity, the happiness, and the security of their inhabitants, that I may be permitted to mention them, at present, as objects of prominent utility.

But an oblivion of all past jealousies and dissensions is the first great step towards improvement of any kind; and, when that is happily accomplished, and the undivided attention of the Executive Government, and the Legislature, shall be given to the advancement of the general interests of the Province, in a spirit of cordial co-operation, there is no reason to doubt that Lower-Canada will rapidly advance in prosperity; and emulate, ere long, the most opulent and flourishing portions of the North American continent.

