

CANADIAN Contract Record

*A Weekly Journal of Public Works, Tenders,
Advance Information and Municipal Progress*

This Paper Reaches Every Week the Town and City Clerks, Town and City Engineers, County Clerks and County Engineers, Purchasers of Municipal Debentures and Leading Contractors in All Lines Throughout Canada

VOL. 15.

TORONTO, MONTREAL AND WINNIPEG, JANUARY 11, 1905

No. 48

THE CANADIAN CONTRACT RECORD

PUBLISHED EVERY WEDNESDAY

As an Intermediate Edition of the Canadian Architect and Builder.

Subscription Price, \$2 per annum, payable in advance.

THE C. H. MORTIMER PUBLISHING COMPANY
of Toronto, Limited,

CONFEDERATION LIFE BUILDING, TORONTO.
Telephone Main 2352.

Branch Offices:

38 Alliance Building, Montreal.
Telephone Main 2299.

720-721 Union Bank Building, Winnipeg.
21 Great St. Helen's, London, England.

Subscribers who may change their address should give prompt notice of same. In doing so give both old and new address. Notify the publishers of any irregularity in delivery of papers.

TENDERS

Will be received at the office of the undersigned up till noon, January 10th, 1905, for all trades in the erection of a Gate Lodge at St. James Cemetery, Toronto.

DARLING & PEARSON, Architects,
Toronto, Ont.

TO CONTRACTORS

Tenders are invited up to 5 p. m. SATURDAY, 14th INST., for the different trades work required in the construction of a Presbyterian Building at Deseronto, Ont. Plans and specifications may be seen at the residence of the Rev. P. J. Hartigan, Napanee, Ont., and at the office of the architect, Kingston, Ont.

H. P. SMITH,
Architect.

Anchor Building, Market Square.

CONCRETE PILES

For Procuring Cheap Permanent Foundations in Filled or Soft Grounds. I am prepared to put in concrete piles, or to furnish contractors with the necessary cores on a Royalty basis, under my Patents. Estimates furnished on application. Address,

A. A. RAYMOND,
Office of Medler & Ariott,
Foot of Berkeley St.,
Toronto, Ont.

TENDERS WANTED

Tenders will be received up till 5 o'clock, 14th OF JANUARY, 1905, for all Trades required in the erection of Brick Town Hall in the Village of Ailsa Craig.

Plans and specifications may be seen on and after MONDAY, THE 10th, at the office of E. B. Smith, Ailsa Craig, or J. A. Humphris, St. Mary's.

The lowest or any tender not necessarily accepted.

E. B. SMITH,
Village Clerk, Ailsa Craig.

BRIDGE TENDERS WANTED

Tenders will be received by the undersigned on behalf of the County of Huron, at Wingham Post Office, Ont., until 5 o'clock p. m. on

Saturday, the 21st day of January, 1905

for the erection of the superstructure of the following steel bridges in the said county, viz., 1st, One to be erected over the Eighteen Mile River on the Lake Shore Road in the township of Ashfield, about 2 miles south of Amberley, about 10 miles from G. T. R. station at Ripley. The bridge is to be of one span, 95 ft. clear between the abutments. Pratt truss, to be 18 ft. high of six panels. Roadway, 16 ft. wide, steel joists at 2 feet centres, floor of 3-inch Rock Elm or Tamarack. Wheel guards, 5x5 inches of pine or cedar. Railing to be 4 ft. high of 4 tiers of 1 1/2 inch gas pipe, strength 120 lbs. per square foot of floor surface, and large safety factor; to be strong enough for concrete floor. About 30 ft. from bed of stream to floor, gravel bottom, little water. The bridge is to be completed on or before the 15th day of August next, 1905.

2nd—A steel bridge to be erected over the Nine Mile Creek, about 2 miles south of the village of Lucknow on the boundary line between the townships of West Wawanosh and Ashfield. It is to be of one span 62 ft. clear between abutments, truss 8 ft. high. Roadway 16 ft. wide, steel joists at 2 feet centres, floor of 3-inch Rock Elm or Tamarack. Wheel guards 5x5 inches of pine or cedar. Railing to be 4 ft. high of 4 tiers of 1 1/2 inch gas pipe, strength 120 lbs. per square foot of floor surface, with large safety factor to be strong enough for concrete floor. About 10 ft. from bed of stream to floor, hard bottom. The bridge is to be completed on or before the 1st day of August, next, 1905.

3rd. A steel bridge to be erected over a branch of the Maitland river about 2 1/2 miles east of the Village of Bluevale on G. T. R. It is to be of one span 110 feet clear between abutments. Pratt truss 19 ft. high of 7 panels. Roadway, 16 ft. wide, steel joists of 2 ft. centres, floor of 3 inch Rock Elm or Tamarack. Wheel guards, 5x5 inches of pine or cedar. Railing to be 4 ft. high of 4 tiers of 1 1/2 inch gas pipe. Required strength 120 lbs. per square foot of floor surface with large safety factor, to be strong enough for concrete floor. About 15 ft. from bed of stream to floor, hard bottom and little water, good place to erect. The bridge to be completed on or before the 1st day of September, next, 1905.

4th—A steel bridge to be erected over the Bayfield river on the boundary line between the townships of Tuckersmith and Hibbert, about 3 1/2 miles from G. T. R. station at Seaford, known as McCann's bridge. It is to be of one span 60 feet clear between the abutments, truss 8 feet high of 5 panels. Roadway, 16 ft. wide, steel joists at 2 ft. centres, floor 3 inches thick of rock elm or tamarack or a concrete floor. Railing, 4 ft. high of 4 tiers of 1 1/2 inch gas pipe. Required strength 120 lbs. per square foot of floor surface, with safety factor 12 ft. from bed of stream to floor; hard bottom, little water. The bridge is to be completed on or before the 20th day of August, next, 1905.

Tenders must be accompanied by a marked cheque payable to the County Treasurer equal to 10 per cent. of the amount of tender. Should any party whose tender is accepted, fail to execute the necessary contract and bonds and to give satisfactory security for the due fulfilment of the contract, the deposit accompanying the tender will then be forfeited to the County of Huron.

The deposits of unsuccessful tenderers will be returned.

The lowest or any tender not necessarily accepted.

JOHN ANSLEY,
Co. Com. for Huron County.
Wingham, Ont., Jan. 4th, 1905.

WANTED

Architectural Draughtsman, thoroughly competent to take charge of Toronto office. Good at designing and perspective. State experience and salary expected. Box 24, CONTRACT RECORD.

CONTRACTS OPEN.

HIGH RIVER, MAN. — Lane & Emerson intend building a new block here.

MUNSTER, ONT. — Wm. Tubman purposes building a brick house in the spring.

ALEXANDRIA, ONT.—The Council propose to issue debentures for \$14,620.89.

VIRDEN, MAN.—A site has been purchased on which to build a new school.

STRATHCONA, N.W.T.—The town proposes to install waterworks and sewerage systems.

SANDWICH, ONT. — The Bishop Fur Co. will commence work at once on a new building.

LUMSDEN, N.W.T. — It is the intention of G. E. James to build a new residence in the spring.

LACOMBE, N.W.T.—It is probable that steps will be taken this year to install a waterworks system.

FORT ERIE, ONT.—The question of constructing waterworks and sewerage systems is under consideration.

LONDON, ONT. — The Parrell-Dean Steam Baking Co. will build an addition to their bakery on Bruce street.

TILSONBURG, ONT.—It transpires that the by-law to give a bonus to the Woodstock Wind Motor Co was defeated.

IRON BRIDGE, ONT.—Plans have been prepared and tenders invited for a new school to be built here, probably of concrete.

TORONTO JUNCTION, ONT.—The question of building a Carnegie library here will likely be taken up at an early date.

PELEE ISLAND, ONT. — Wm. Stewart will receive bids up to January 28th for the purchase of \$800 5 per cent. debentures.

STRATFORD, ONT.—J. A. Cline, upholsterer, Ontario street, will probably erect a new factory during the coming summer.

ST. ANDREWS, N.B. — A public meeting will be held on January 16 to consider the question of installing an electric light plant.

CORNWALL, ONT.—James Leitch,

Chairman High School Board, will receive tenders up to Monday, 16th inst., for alterations to the present school building.

MEDICINE HAT, N.W.T.—It is understood that the Dominion Government will build a new post office and customs house here.

MONCTON, N.B.—B. E. Smith is negotiating with the W.C.T.U. for the purchase of their property with a view to erecting a brick block on the site.

KINGSTON, ONT.—Although the Okill street sewer by-law was defeated, the work will be proceeded with and the money taken out of current revenue.

PORT ARTHUR, ONT.—It is probable that the new Council will consider the installation of another power plant on the Current river.

WOODSTOCK, ONT.—It is now stated that the by-law granting a loan to the Eureka Planter Co., of Windsor, Ont., was carried, instead of being defeated as at first reported.

ST. THOMAS, ONT.—Bids will be received by O. P. Surrey, City Treasurer, up to Wednesday, February 15, for the purchase of \$200,000 4½ per cent. debentures.

BRODHAGEN, ONT.—Bids will be received by Francis Jacob, Township Clerk of Logan, up to Friday, 20th inst., for the purchase of \$6,500 4 per cent. debentures.

LADYSMITH, B. C.—It is understood that the Esquimalt and Nanaimo Railway Co. will build modern foundry and machine shops on Haslam Flat, four miles north of this place.

ST. JOHN, N.B.—Raymond & Doherty, proprietors of the Royal Hotel, have purchased a large building on German street which they will remodel and enlarge for the purposes of sample rooms.

GALT, ONT.—The Sewers Committee have decided not to accept the tenders received for the construction of Section No. 2 of the lateral sewers, they being in excess of the engineer's estimate.

PORTAGE LA PRAIRIE, MAN.—R. P. Campbell has disposed of property on Saskatchewan ave. having 43 feet frontage to an eastern implement firm, who will erect a brick block on the site.

HULL, QUE.—The City Engineer has been instructed by the City Council to prepare estimates for an electric plant for furnishing street and commercial lighting.

DOMINION CITY, MAN.—The Pocock Power Co. have submitted a proposition to the Council to light the municipality from a power plant to be installed on the Roseau river.

ST. THOMAS, ONT.—Norsworthy & Co. intend increasing their foundry plant next spring.—The St. Thomas Brass Co. purpose building an addition to their works, to be 40 x 60 feet.

QUEBEC, QUE.—The Lake St. Joseph Hotel Co. are formulating their plans for the building and equipment of the proposed hotel. J. G. Scott and Harold Kennedy are directors of the company.

GLACE BAY, N.S.—The Dominion Government voted \$25,000 to re-open the harbor, repair wharves, etc. The wharves have been repaired, but the erection of shipping piers are still matters for consideration.

ST. JOHN, Nfld.—It is announced that Sir Alfred Harmsworth, of the London Daily Mail, has closed a deal with the Newfoundland Government to establish pulp and paper mills costing upwards of \$3,000,000.

SAULT STE. MARIE, ONT.—The Algoma Conper Range Railway Com-

pany is being organized to build a mining railway from Batchavauning, on Lake Superior, to Aubrey Falls, a distance of about 75 miles.

WESTMOUNT, QUE.—The special water committee of the Council have reported in favor of renewing the contract for a water supply with the Montreal Water & Power Co. on condition that they install a filtration system.

OWEN SOUND, ONT.—The by-law granting exemption from taxation to the Carney Lumber Co., to assist them in building a saw mill, was carried by the ratepayers on January 2nd. The bridge and dock by-laws were defeated.

FORT WILLIAM, ONT.—It is said that an extensive addition will be made to the tank section of the King cleaning elevator.—The Town Council propose to raise \$5,000 for fire protection purposes, es., including the purchase of a new hook and ladder truck.

PORT HOPE, ONT.—The Presbyterian congregation have decided to build a new church here, after the plan of the new Presbyterian church at Mitchell. It will be of pressed brick and stone, with towers. Particulars may be obtained from J. F. Clark.

MOOSE JAW, N.W.T.—The Moose Jaw and Edmonton Railway Company will make application to the Dominion Government for incorporation, with power to construct a railway from Moose Jaw to Edmonton. McGiverin & Haydon, of Ottawa, are solicitors for the applicants.

SARNIA, ONT.—It is said that the Grand Trunk Railway Co. are taking tenders for the substitution of electricity for steam power in the tunnel here. The plans call for the erection of a power house on the company's property on the banks of the St. Clair river.

VANCOUVER, B. C.—M. Grossman has purchased two lots on Pender street, between Abbott and Carrall streets, on which he intends building a warehouse.—C. J. Weeks has purchased Lot 5 on Pender street on which he will build in the near future.—T. F. McGuigan, City Clerk, desires tenders by Monday, 23rd inst., for supply of cast iron pipe.

FREDERICTON, N.B.—The City Council have not yet reached a decision regarding the advisability of installing an electric plant for lighting the municipal buildings.—C. H. LaBillois, Commissioner of Public Works, will receive tenders up to Monday, January 16, for rebuilding St. Augustine bridge over the Middle Branch Barnaby River, Northumberland County.

GRONDINES, QUE.—F. Gelinat, Secretary Department of Public Works, Ottawa, is asking for tenders up to Friday, January 27, for the enlargement of the wharf here. Plans at the office of the Clerk of Dominion Public Works, Quebec, the Department of Public Works, Ottawa, and on application to the Postmaster here. Cheque for \$1,800 to accompany each tender.

VICTORIA, B.C.—Tenders are in for the construction of the C.P.R. hotel in this city, but it is improbable that the contract will be awarded before a week or ten days. The building will be an eight-storey stone structure.—The Capital City Packing & Canning Co. purpose building a cannery in Esquimalt. They have also in contemplation three traps, all of which will be constructed next spring.

HAMILTON, ONT.—A. C. Havill has purchased 31 feet of land on Bold street, near James, on which to build a residence.—Henry New has purchased 120 feet frontage on King street and 130 feet on Main street, adjoining the G.T.R.

station. It is reported that he intends building a warehouse and factory on the site.—It is understood that Trebles, Limited, propose a further addition to their store at corner of King and James street.

NIAGARA FALLS, ONT.—E. D. Pitt, architect, is asking for tenders up to January 25th for the erection of a brick veneer residence on Peer street for Herman R. Misener. Contracts will be awarded about February 15.—The Canadian Shredded Wheat Company of Ontario, Limited, will establish a large plant here for making the shredded wheat products.

OTTAWA, ONT.—H. C. Stone, architect, of Montreal, has prepared plans for a new building to be built on Slater street, this city, by Woods, Limited. The new building will be 70 x 200 feet and 7 stories high.—D. Ewart, Chief Architect of the Department of Public Works, is preparing plans for vaults for the storing of gold.—The Government propose to add another flat to the Commons and Senate buildings, and there is talk of building a northerly addition to the west wing.

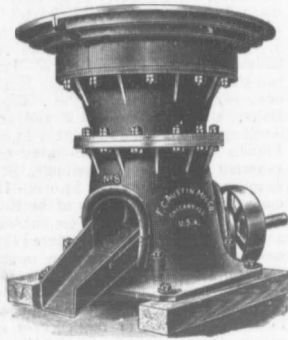
EDMONTON, N. W. T.—Only two tenders were considered by the Council for the construction of the west end water works and sewer extensions, as follows: F. Fry, \$44,975; City Engineer, \$31,585. The contract has not yet been awarded for either construction or for supply of materials, and it is probable that new tenders will be invited.—H. Williams is organizing the Egg Lake Oil Co. for the purpose of acquiring and developing property in the Egg Lake district, about thirty miles northwest of this town.—The Calgary and Edmonton Railway Co. are seeking power from the Legislature to issue \$1,000,000 of bonds for the construction of a high level bridge over the Saskatchewan river, between Edmonton and Strathcona.—The Edmonton, Yukon & Pacific Railway Co. want an extension of time for commencing their road.

MONTREAL, QUE.—Castle & Son, 20 University street, have acquired the properties at 2446 St. Catherine street and 79-81 Drummond street, which they will remodel and utilize for their stained glass works.—The Montreal Street Railway Co. have arranged for the expenditure of \$500,000 during the present year in securing and distributing additional power and making improvements over the system. Three sub-stations will be built at different terminals.—Smith, Markey, Montgomery & Skinner, of this city, are seeking incorporation for the Athabasca Northern Railway Co., to construct a railway from Edmonton to Athabasca Landing, N. W. T.—A. E. Dunlop, architect, is preparing plans for the new building to be built by C. W. Lindsay, Limited, on the site recently purchased on St. Catherine street, near Peel.—It is the intention of N. Valquette to erect a five-storey factory facing St. Andre street and extending to St. Catherine street.

WINNIPEG, MAN.—Darling, Pearson & Over, architects, are preparing plans for a new rectory for Holy Trinity parish, brick, cost about \$10,000.—It is understood that the authorities of the German Lutheran church will rebuild in another part of the city.—Alderman J. G. Latimer has purchased 200 feet on the east side of Furby street, near Ellice ave., and, it is understood, intends erecting a terrace of modern houses early next spring.—Minneapolis parties are reported to have purchased 25 feet frontage on Pembina street, on which to build a planing mill.—F. Morton Morse, of the Street Railway Co., has purchased 200 feet on Wellington Crescent, opposite St. Mary's Academy, and will build a red

AUSTIN CRUSHERS

THE PRODUCT OF



AUSTIN GYRATORY CRUSHER

1. Years of experience in the manufacture of stone and ore crushers—both Gyra-tory and Jaw Type.
2. The application of modern methods and principles of construction, resulting in an up-to-date machine.

Mechanically correct in every detail.

Capable of crushing stone as fast as it can be fed.

Capable of crushing exceptionally hard ma-terial without difficulty, as many users testify.

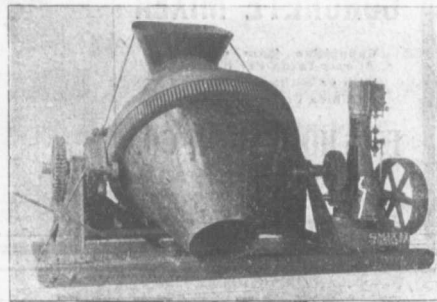
**STONE CRUSHING PLANTS
COMPLETE WITH ELEVA-
TORS, SCREENS, ETC. . . .**

Send for Plans and Specifications

SMITH MIXERS

Unequaled for rapid and thorough mixing.

Users all over Canada from coast to coast submit their unqualified approval.



LARGE SIZE MIXER ON SKIDS—DUMPING

W. H. C. Mussen & Co.

RAILWAY, MINING AND CONTRACTORS' SUPPLIES

Montreal

brick residence in the spring. — Dr. S. C. Corbett recently purchased 180 feet on Central ave., Armstrong's Point, and it is said to be his intention to erect a residence on the property early next spring. — The southwest corner of Logan and Patrick streets recently changed hands, and it is understood that the purchaser, whose name has not been learned, will erect a fine store early this spring. — The report that the contract for the double tracking of the C.P.R. between Winnipeg and Fort William has been let is denied by Mr. Whyte, second vice-president of the company. — Cecil Goddard, town engineer of St. Boniface, is preparing plans for a combined fire hall and police station to be built at the corner of Horace ave. and St. Joseph street. It will be equipped with a chemical engine of the latest pattern. — The Lebonk and Thunder Bay Railway Company is seeking incorporation, to construct a railway from a point on Thunder Bay northerly to the Lebonk mine, in Township of McTavish, thence westerly to the south shore of Loon Lake. T. L. Metcalf, of this city, is solicitor for the applicants. — Tenders are being invited for the erection of a large addition to St. Boniface College, work on which will commence early in the spring. — The City Engineer has reported that a sewer on Corydon avenue, from Lilac street to Cambridge street, and on Jessie avenue and Lilac street, will cost \$39,000, and that an asphalt pavement on Corydon ave., from Cambridge street to Pembina street, will cost \$70,000. The works will be advertised. — The City Clerk will receive tenders up to January 24 for the supply of four carloads of tamarac piling.

TORONTO, ONT. — The Bank of Nova Scotia have purchased the north-

west corner of Brock ave. and Dundas street and will, as soon as possible, erect a substantial bank building on the site. — The Standard Loan Co. have disposed of the Yonge street Arcade to an American company, who will probably make extensive alterations. — Darling & Pearson, architects, are taking tenders up to the 19th inst. for the erection of a gate lodge at St. James' Cemetery. — R. Anderson & Co., machinists, 111 Adelaide street west, intend building a new two-storey machine shop on the corner of Farley ave. and Esther street. — S. G. Curry, architect, has completed plans for extensive alterations to the custom house. They have been forwarded to Ottawa and it is expected that the work will be proceeded with at an early date. — The City Engineer has asked the Board of Control for permission to advertise for tenders for a hydraulic dredge, to be used on the island improvements next season. — The Alumni Association of the University of Toronto, are anxious to proceed with the erection of a convocation hall this year. Some \$50,000 has been raised by subscription and the Government has promised an additional \$50,000, while the plans for the hall as proposed call for an expenditure of about \$150,000. — Plans of the proposed subway under the G. T. R. and C. P. R. tracks at Lunsdowne ave. have been forwarded by the City Engineer to Ottawa for approval. — Building permits have been granted as follows: Jas. Henderson, K.C., two-storey and attic brick and cut stone dwelling, 54 Madison ave., cost \$10,000; Walter Nash, six 2½-storey brick dwellings, south side Galley ave., near Roncesvalles, cost \$11,400; Canada Metal Co., new steel and cement

floor to building, 25-31 William street, cost \$1,000; George Rennie, 2½-storey brick dwelling, 32 Russet ave., cost \$1,800; Harry Love, pair two-storey and attic brick and roughcast dwellings, north side Smith street, near Logan ave., cost \$2,800; Frank Darling, two-storey brick and stone addition to dwelling, 11 Walmer road, cost \$1,000; J. D. Farquhar, five two-storey brick and roughcast dwellings, Gildersleeve ave., near Sumach street, cost \$6,500; Baxter Advertising Co., alterations to brick store at south-east corner Yonge and Adelaide streets, cost \$4,000; E. W. Trent, two-storey roughcast dwelling, Eastern ave., near Pape, cost \$1,500; Gordon Osler, alterations to brick and stone dwelling, 6 Rosedale road, cost \$3,000; Francis C. Jones, two two-storey brick veneered additions to dwellings, Blank street, near Dufferin, cost \$3,000. — It is understood that the owner of the Elliott House is considering plans for increased accommodation, and it is rumored that a new hotel will be built on the opposite corner of Church and Shuter streets. — Ald. Vaughan has given notice of motion in council to request the city engineer to furnish an estimate of the cost of connecting Queen's wharf with the Western Island sand-bar by a swing bridge. — At a meeting of the York Township Council on Monday last, P. S. Gibson & Sons, township engineers, were instructed to advertise for tenders for a bridge over the creek near Somerville ave.

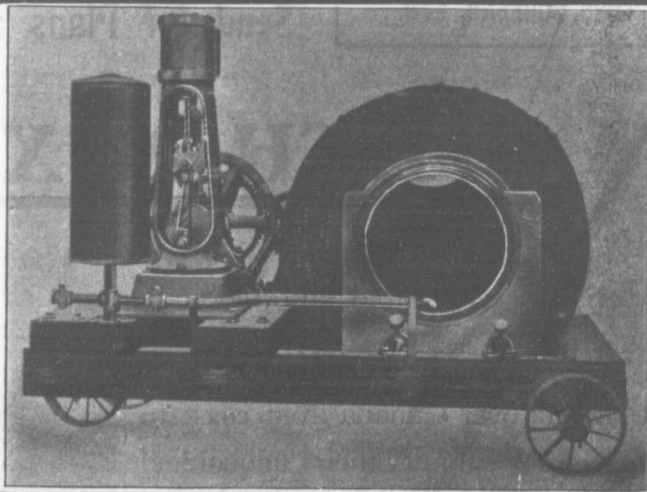
FIRES.

Sydney Hotel at Sydney, N. S., owned by E. LeRoi Willis, damaged to the extent of \$5,000. — Warehouse at Chipman, N. B., owned by Sayre & Holly, of

MIXES CHEAPER
MIXES BETTER
THAN ANY OTHER MIXER
RANSOME
CONCRETE MIXER

Capacities from 5 to 80
Cubic Yards Per Hour.
With or Without Power.
On Skids or Trucks.

F. H. HOPKINS & CO.
Successors Late James Cooper
New Imperial Bank Bldg.,
MONTREAL, P. Q.



L. H. GAUDRY & CO.
DIRECT IMPORTERS AND AGENTS

CAST IRON WATER AND GAS PIPES AND CONNECTIONS

All weights and tests to suit requirements. 2 to 48" in diameter.

Large Stock.

Direct importation from best English and Scotch manufacturers.

It will pay you to obtain particulars and prices before placing your orders.

OFFICES: HOCHELAGA BANK BUILDINGS

SALT GLAZED VITRIFIED SEWER PIPES AND CONNECTIONS

Sizes—4 to 48 inches in diameter.

Prompt Shipments.

ONCE INTRODUCED, ALWAYS USED.

QUEBEC, CANADA

St. J
— at
loss
Lond
Lond
\$2,50
wich,
\$20,0

GI
sione
maso
Miles
PR
contr
has b
of Pe
SY
of Pit
to ins
the w
& Ste
ST
teridg
been
tion o
adian
TO
Moore
contra
direct
A. M
PO
Domi
contra
posed
of St.
DU
for ere
county
has be
derbu
being
FR
missio
contra
struct
Creek

JO

CC
Dams
Room

J. A. L.
Mem
Mem.

W
Gons

Canada
Mani
Moni

M.

Dred

of va

Subn
Hoistin
Horse-
Centrif
Gold M

St. John, totally destroyed; loss \$25,000.— Factory of the Canada Carriage Co. at Brockville, Ont., totally destroyed; loss \$200,000.—Moulding shop of the London Brass Co., 34 Carling street, London, Ont., damaged to extent of \$2,500.—Bishop Fur Co.'s plant at Sand- wick, Ont., almost totally destroyed; loss \$20,000.

CONTRACTS AWARDED.

GIBSON, N.B.—The Water Commis- sioners have awarded the contract for masonry for the new reservoir to George Miles.

PRINCE ALBERT, N. W. T.— The contract for building a post office here has been awarded to Lamoine & Fortin, of Pembroke, Ont., price \$80,000.

SYDNEY, N. S.—Heyl & Patterson, of Pittsburg, have secured the contract to install an additional electric crane in the washing plant of the Dominion Iron & Steel Co.

STRATHROY, ONT.— Frank Gut- teridge and H. Edge, of Seaforth, have been awarded the contract for the erection of a bank building here for the Cana- dian Bank of Commerce.

TORONTO, ONT.— The Jones & Moore Electric Co. have been given the contract to install two 500 light dynamos, direct connected to Robb engines, in W. A. Murray & Co.'s departmental store.

PORT COLBORNE, ONT.— The Dominion Government have awarded the contract for the foundations of the pro- posed elevator here to Larkin & Sangster of St. Catharines, price about \$200,000.

DUNNVILLE, ONT.—The contract for erection of House of Refuge for the county of Haldimand, to be located here, has been let to J. E. Cutler and M. Van- derburgh, of Welland, the contract price being \$17,500.

FREDERICTON, N. B.—The Com- missioner of Public Works has awarded contracts to William Brewer for con- struction of the Munro bridge, McCallum Creek bridge, Forest City bridge and

Five Mile Brook bridge, all in York county.

MONTREAL, QUE.—The Canadian General Electric Co. have secured the contract to install a turbine power plant for the Canada Car Co. of this city.— The James Smari Manufacturing Co., of Brockville, have secured the contract for heating and ventilating the new East End Methodist church in this city. Three Kelsey generators will be used.

BIDS.

GALT, ONT.— Three tenders were received for the construction of Section No. 2 of the lateral sewers, as follows: J. F. Connolly, Toronto—For complete work, \$14,500; storm drains, \$2,500; house connections, \$1.90 per foot; street gulleys, \$40 each; connections, \$1.50 per foot; rock excavation, \$2.50 per cubic yard. Thomas Fletcher, Galt—Complete work, \$14,910.65; storm drains, \$2,513.70; house connections, \$1.75 per foot; street gulleys, \$45 each. Thomas McLaughlin —Work complete, including storm drains, \$16,251; house connections, \$2 per foot; street gulleys, \$35 each; rock excavation, \$3.16 per cubic yard. The engineer's estimate was \$11,615 for the work com- plete and \$2,890 for the storm drains. It is probable that new tenders will be invited.

U. Cyr & Fils, painters, St. Henri, Que., have dissolved.

BUSINESS NOTES.

The death is announced of Paul Breton, sr., contractor, Quebec.

Connery & Richardson, builders' sup- pliers, Winnipeg, have dissolved.

Jones & Henry, painters, Montreal, have dissolved, R. E. Jones continuing.

The dissolution is announced of A. Rousseau & Company, builders, Mon- treal.

H. Smith will continue the business carried on by Reid & Smith, painters, Winnipeg.

A demand of assignment is reported to have been made upon Arthur Chatelle, contractor, St. Henri, Que.

Octave Plant & Fils, plumbers, of Que- bec, are announced to have assigned, with assets of \$1,390 and liabilities of \$2,770.

C. G. H. Chamberland & Company, painters, Montreal, have dissolved and the business will be continued by C. G. H. Chamberland.

SAND

The Water Washed Variety
GRAVEL

Slag for foundations and fire- proof work.

SAND & DREDGING LIMITED,
John Street Dock.
Tel. M. 4507.

BITULITHIC

2,500,000 square yards laid in America
100,000 " " " " Canada

FOR PARTICULARS APPLY

The Warren Bituminous Paving Co., Limited
Head Office: 164 Bay Street, TORONTO.

Was awarded the Gold Medal
at the St. Louis Exposition 1904

JOSSON CEMENT

..Manufactured at.
NIEL ON RUPELL

Is the Highest Grade Artificial Portland Cement and the Best for High Class Work. Has been used largely for Government and Municipal Works.

TO BE HAD FROM ALL CANADIAN DEALERS

C. I. de Sola, Manager in Canada .. 180 St. James Street, MONTREAL

JOHN S. FIELDING

Mem. Soc. C. E. West Penn. '87.

CONSULTING ENGINEER.

Dams, Mills, Bridges, Machinery.
Room 2, 15 Toronto Street, TORONTO, ONT

J. A. L. WADDELL, Mem. Can. Soc. C. E. Mem. Inst. C. E. Mem. Am. Soc. C. E.
IRA G. HEDRICK, Mem. Can. Soc. C. E. Mem. Inst. C. E. Mem. Am. Soc. R. C.

Waddell & Hedrick

Consulting Bridge Engineers
KANSAS CITY, MO.

Canadian Head Office:
Manning Chambers, TORONTO, ONT.
Montreal Office: 185 St. James Street.

M. BEATTY & SONS
WELLAND, ONT.

Dredges, Ditchers, Derricks and
Steam Shovels
of various styles and sizes to
suit any work.

Submarine Rock Drilling Machinery
Hoisting Engines, Suspension Cableways,
Horse-Power Hoisters, Gang Stone Saws,
Centrifugal Pumps for Water, Sand and
Gold Mining, and other Contractors' Plant.

1905 **Robinson's Latest Improved** 1905
STEEL TILE MOULDS

With adjustable cone tap filler and reversible bottom ring for making plain or telescopic joints. Also all kinds of the latest improved

Road Making Machinery and
Steel Stone and Ore Crushers.

CLIMAX ROAD MACHINE CO.

HAMILTON - - - CANADA



(Patent applied for.)

The Rotary Man Power Concrete Mixer

Capacity five cubic yards
per hour.

Continuous in Action.

Specially adapted for Sidewalk and
Street Work, and all classes of
concrete work where a thorough
mixture with but small capacity
is required.

Other Mixers and Concrete
Mixing Machinery.

Send for Catalogues.

E. F. DARTNELL,
Montreal.



1 street,
2-storey
e., cost
grey and
vellings,
an ave.,
0-storey
ling, 11
Farqu-
ughcast
near Su-
ter Ad-
ck store
nd Ade-
Trent,
Eastern
Gordon
id stone
\$3,000;
ey brick
s, Blank
o.—It is
ie Elliott
ncreased
ed that a
opposite
streets.—
of motion
ineer to
of con-
Western
dge.—At
Council
& Sons,
ucted to
ver the

S., own-
d to the
at Chip-
Holly, of

R PIPES

YS USED.

NADA

NEW COMPANIES.

Canadian Ammunition Company, Limited, Montreal, incorporated, capital \$500,000. L. A. Boyer, H. D. Anthier, J. E. Lareau and others.

Dominion Textile Company, Limited, Montreal, incorporated, capital \$10,000,000, to acquire and operate cotton and woollen manufactories. David Yuile, Hon. L. J. Forget, David Williamson, all of Montreal, and others.

Western Salt Company, Limited, McCreton, Ont., incorporated, capital \$100,000. Directors, D. A. Gordon, of Wallaceburg; S. C. McLouth, of Marine, City, Mich.; R. C. Vaughan, of Toronto, and others.

Toronto Gas & Gasoline Engine Company, Limited, Toronto, incorporated, capital \$300,000. Directors, J. Laishley, L. C. Laishley, R. B. Dargabel and H. H. Milburn, of Toronto, and Robert Hunter, of Toronto Junction.

Ross-Taylor Company, Limited, Exeter, Ont., incorporated, capital \$30,000, to carry on business as lumber merchants and to do a general planing mill and saw mill business. Directors, D. A. Ross, John Taylor, and J. R. Hind.

Universal Spring Motor Company, Limited, Toronto, incorporated, capital \$250,000, to manufacture motors, etc. Directors, G. H. Campbell, W. B. Bentley, W. J. Johnson, L. F. Ashton, and Simon Metcalfe.

Consumers Box & Lumber Company, Toronto, incorporated, capital \$100,000. Directors, J. B. Miller, John McClelland, Frank Sully, W. B. Tindall and H. T. Canniff.

Canadian Barcalo Manufacturing Company, Limited, Welland, Ont., incorporated, capital \$40,000, to manufacture metal beds, bed springs, mattresses, etc. Directors, E. H. Barcalo and U. L. Candell, of Buffalo, and others.

Commercial Oil Company, Limited, Hamilton, Ont., incorporated, capital \$100,000, to manufacture and sell oil and lubricants of all kinds. Directors, James C. Person, W. J. Morrison, G. L. Person, Chester Goring, and William C. Person.

Nipissing Mining Company, Limited, Toronto, incorporated, capital \$250,000. Directors, E. P. Earle, of New York; David Fasken and Harper Armstrong, of Toronto.

BUILDING SUPPLIES.

There is but a light movement of building supplies, as the cold weather and heavy fall of snow have caused a cessation of building operations. There is some inquiry for cement for future delivery, the present low price being an inducement to purchase for spring requirements. Although no material change has taken place as yet, indications favor an advance. For delivery at Toronto Portland cement is quoted at \$1.70 per barrel. An advance in glass is also expected on account of the strike in Belgium, which is still in progress.

Piper & Company, brick makers, Red Deer, N. W. T., have been succeeded by The Piper Brick & Tile Company.

McGREGOR & McINTYRE, LIMITED

67 to 91 Pearl Street, Toronto, Ont.

STRUCTURAL IRON WORKS

Fire Escapes, Library Racks, Sidewalk Door, Jail Cells, Iron Stairs, Railings, Etc., Etc.

SOLE AGENTS FOR DUPLEX HANGERS

WRITE FOR ESTIMATES.

BLAST . . . SLAG . . . A MOLTEN FURNACE . . . ROCK . . .

Cement Sidewalks, Road Foundation and Concrete Work

STRONG AS STONE
CHEAP AS GRAVEL

Doolittle & Wilcox, Hamilton, Ont.

Toronto Agents: Sand & Dredging Limited, John Street Dock.

SALT GLAZED
VITRIFIED

SEWER PIPE and FITTINGS

HIGH-GRADE



FIRE BRICK & FIRE CLAY

and Builders' Supplies of
all Kinds.

Sewer Pipe Factories at

Mimico, Hamilton, St. Johns, Que., and New Glasgow, N. S.

Shipments will be made from nearest factory or freight equalized.
Ask for Discounts and Prices. Address

The Toronto Pottery Co., Limited, Toronto, Ont.

Office, 75 Cottenham St. Yards, 75-81 Cottenham St.
Telephone North 1787 and North 1552

W. & F. P. CURRIE & CO.

345 St. James St., Montreal

Importers of

SEWER PIPES,

CULVERT PIPES, ETC.

VENT LININGS,

FLUE COVERS,

FIRE BRICKS,

FIRE CLAY,

WHITING.

PORTLAND CEMENTS,

HIGH GRADE ENGLISH

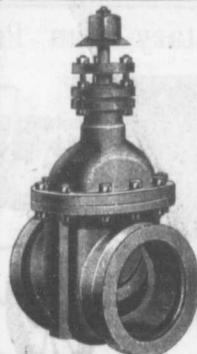
" " GERMAN

" " BELGIAN

PLASTER OF PARIS

BORAX,

CHINA CLAY.

KERR'S
WATERWORKS VALVES

Are tested to 300 pounds hydraulic pressure before being stocked. They are of good substantial weight and design, and can be relied upon.

Write for catalogue, and we will tell you more about them.

THE KERR ENGINE CO., LIMITED
Walkerville - - Ont.

CONSULTING ENGINEERS
The Canadian Casualty
and Boiler
Insurance Co.

22-24 Adelaide St. E. TORONTO
Phone M. 4091
A. M. WICKENS. Chief Engineer. A. G. C. DINNICK, Managing Director.

Paving Granite

Granite Sets for Street Paving.—CURBING cut to any shape ordered.—Fine Rich Colors for Building and Monumental Purposes. Quarries, St. Philippe d'Argenteuil, P.Q.

Address all communications to
JOS. BRUNET - COTE DES NEIGES, MONTREAL

RAILS For Contractors, Switches, Gir-
ders, &c.
New and Second Hand.
LOCOMOTIVES AND CARS

John J. Gartshore
83 Front St. West,
Opposite Queen's Hotel.) **TORONTO**

ARTIFICIAL STONE PAVEMENTS

SIDEWALKS A SPECIALTY
CORPORATIONS Will do well to consider our work and prices before letting contracts
The Silica Barytic Stone Company
of Ontario, Limited.

WALTER MILLS General Manager. Head Office: **INGERSOLL, ONT.**

T. A. Morrison & Co.

PURVEYORS TO
Municipal
Corporations
Architects
Engineers
Mines
Railway and
Building
CONTRACTORS

ROAD MACHINERY
STONE CRUSHERS
STEAM ROAD ROLLERS
STEAM AND GASOLINE
FIRE ENGINES
BRICK AND STONE
CONCRETE STONE
ROOFING GRAVEL
ROCK DRILLS
BOILERS AND ENGINES
CONTRACTOR'S PLANT

204 St. James Street
MONTREAL

PORTLAND CEMENT
SAMSON BRAND MAGNET BRAND

MANUFACTURED BY

THE OWEN SOUND PORTLAND CEMENT COMPANY, Limited, Owen Sound, Ont.
Works at **SHALLOW LAKE, ONT.** Write us for prices

THE CANADIAN PORTLAND CEMENT COMPANY, LIMITED
Manufacture **"RATHBUN'S STAR"** Brand

The Leading Canadian Portland Cement.

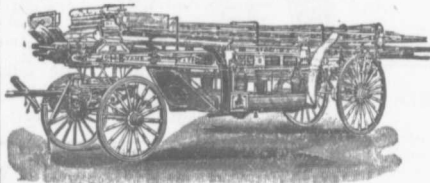
Capacity of Works: **500,000 Barrels Per Year.**

SALES AGENTS

THE RATHBUN CO. St. Lawrence Portland Cement Co.
310-312 Front Street West, TORONTO, ONT. 202-203 Board of Trade Building, MONTREAL.

LIGHTNESS, STRENGTH AND ECONOMY

Seagrave Patent Trussed Ladders, Trussed Aerial, City Service and Village Hook and Ladder Trucks, Combination Hook and Ladder Trucks and Chemical Engines, Trussed Trucks and Hand Pumps, Combination Hose Wagons and Chemical Engines, Hose Wagons, Combination Hook and Ladder Trucks and Hose Wagons, Chemical Engines, Fire Extinguishers, Hose Reels, Patrol Wagons, Ambulances, Specialty Wagons, Patent Sleigh Runners, and other Modern Fire Fighting Tools.

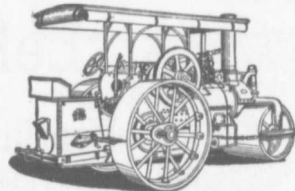


Prompt attention given all inquiries. All goods built to order.

Long Distance
Phones 686 and 684

W. E. SEAGRAVE, WALKERVILLE ONT.

"WATEROUS"
ROAD MACHINERY AND
FIRE APPARATUS

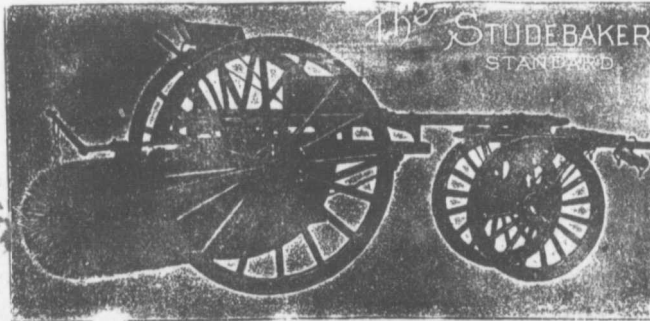


FIRE ENGINES in five sizes,
with a full line of fire-
fighting goods

We Rebuild other makes of
Fire Engines with our
patent Boiler.

BRANTFORD PITTS DOUBLE ENGINE STEAM ROAD ROLLER
IN THREE SIZES—10, 12 and 16 ton.
CORRESPONDENCE SOLICITED.

HUGH CAMERON & CO., Selling Agents, 72 Queen St. West,
Maunng Chambers, **TORONTO**



Studebaker Sprinkler
(PATENT IMPROVED.)

Does not clog or get out of order. Greatest width of spray
Can be graded from driver's seat to any volume.
We also make an . . .

IMPROVED VERTICAL SPRAY
for Pavements.

Geo. Heaman, Mnfr., London, Ont.

Stackpole Patent Improved Street Sweeping Machine Is the Standard of Perfection

Because no sweeper so effectually does the work for which it is designed as "The Studebaker." It Sweeps Clean. No sweeper is constructed with the same degree of care and mechanical precision. It Wears Well. "The Studebaker" has the smallest number of working parts, and has less gearing than any other sweeper made. It is free from all unnecessary complications. With reasonable care it does not get out of order. Send for complete descriptive catalogue.

DEBENTURES

Municipalities contemplating the issue of Debentures will find it to their advantage to communicate with

G. A. STIMSON & CO.

Investment Dealers
24 and 26 King St. W. TORONTO

THE GREY AND BRUCE PORTLAND CEMENT COMPANY
of Shallow Lake, Limited.

Manufacturers of
"HERCULES" BRAND OF PORTLAND CEMENT

Very finely ground Unsurpassed for Sidewalks, Floors and all work requiring the Highest Grade of Portland Cement. For prices address.

A. D. CREASOR, Sec'y-Treas.
Head Office, Owen Sound, Ont.

Please mention this paper when corresponding with advertisers.

Notice to Contractors.

The Niagara Falls Machine & Foundry Co., Limited,

Niagara Falls, Ont.,
are making a speciality of improved

HOISTING AND BUILDING ENGINES.
Write for Prices.

THE CANADIAN INSPECTION COMPANY, LIMITED

Main Office and Laboratories:
146 St. James Street, MONTREAL
SPECIALTIES: Inspection of RAILS and all material for BRIDGES, BUILDINGS, and other structures, cast iron pipe, wood and steel railroad cars.

MANUFACTURE AND ERECTION.
Expert examination and reports, chemical analyses and physical tests of all kinds.
Cement Testing.

**FIREMEN'S LADDERS
—AND—
LADDER TRUCKS**

We make the lightest, quickest, strongest and cheapest. Every Town and Village needs them and can afford them. They will save 50 times their price in insurance premiums. Write for circulars and quotations.

THE WAGGONER LADDER CO., Limited
LONDON - - - ONT

**THE PHOENIX BRIDGE & IRON WORKS, LIMITED
— MONTREAL —
GENERAL STEEL CONTRACTORS**

Large Stock I BEAMS, CHANNELS, ANGLES, TEES, ZEES and PLATES always on hand.

**Dominion
Bridge
Co., Ltd.**

P. O. Address, MONTREAL, P.Q.
Works at LACHINE LOCKS, P.Q.

STEEL BRIDGES

For Railways and Highways
Piers, Trestles, Water Towers
Tanks, Buildings, Roofs, Girders,
Beams and Columns

Toronto Agent: GEO. E. EVANS,
38 Canada Life Bldg., TORONTO, ONT



The Highest Grade of American
Portland Cement is "Iron Clad"

It is the most finely ground (97 per cent. passing No. 100 sieve) and most uniform, having a Ten Years' Record. Used on some of the most important work in Canada and U. S. A.

Prices on application to all dealers, or to

The Glens Falls Portland Cement Co.,
224 Board of Trade, MONTREAL, P. Q.
W. A. COOK, Agent

PORTLAND CEMENT

T. M. Morgan

Manufactures the

CRESCENT & DIAMOND BRANDS

AS GOOD AS THE BEST FOR ANY PURPOSE

Office and Works: Longue Point, MONTREAL, QUE.
Long Distance Phone R. 436 Ring 2.

**"Lehigh"
Portland Cement**

Capacity 11,000 Barrels every Day in the Year.

For Sidewalks and all other work requiring the highest quality Portland Cement Used by the U. S. Government and the largest contractors and users of Portland Cements in the United States.

Absolutely the most popular Cement in Canada on account of its merits
For Prices, etc., address

THORN CEMENT CO. - Buffalo, N. Y.

**The Locomotive and Machine Company
OF MONTREAL, LIMITED**

NEW YORK OFFICE:
25 BROAD STREET
N.Y.

Structural Steel

FOR ALL PURPOSES

WORKS:
LONG POINT
MONTREAL

BRIDGES

NEW AND SECOND HAND CONTRACTOR'S LOCOMOTIVES

STEAM SHOVELS

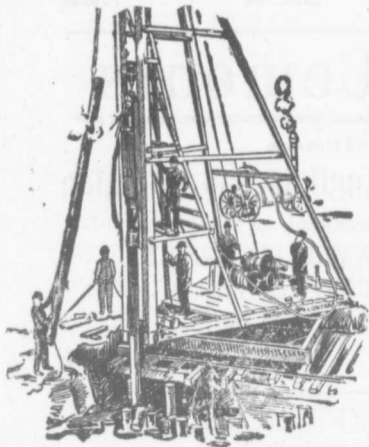
Principal Office: Imperial Bank Building, MONTREAL

The Canadian Bridge Co., Limited

WALKERVILLE, ONT.

MANUFACTURERS OF **RAILWAY AND HIGHWAY BRIDGES**

Locomotive Turn Tables,
Roofs, Steel Buildings and
Structural Iron Work of all descriptions



PILE DRIVING

on land or water by Steam Pile Drivers or Drop Hammers.

**Portable Boilers
Hoisting Engines
Pumping Machinery**

TO LET

Bridge Building, Trestle Work, Wharves
Dams, Diving Submarine Work and
General Contracting.

WM. HOOD & SON
10 Richmond Sq. - MONTREAL

Surveying and Drawing Instruments

Best English Quality

Manufactured by

A. G. Thornton
Manchester, Eng.

Surveyors' and
Engineers' Supplies

Write Us For Catalogue
and Prices <<<<<

5/6c

**C. H. MORTIMER
PUBLISHING CO.**

of Toronto, Limited
AGENTS FOR CANADA

Confederation Life Bldg., TORONTO
Alliance Building, MONTREAL



PILE DRIVING

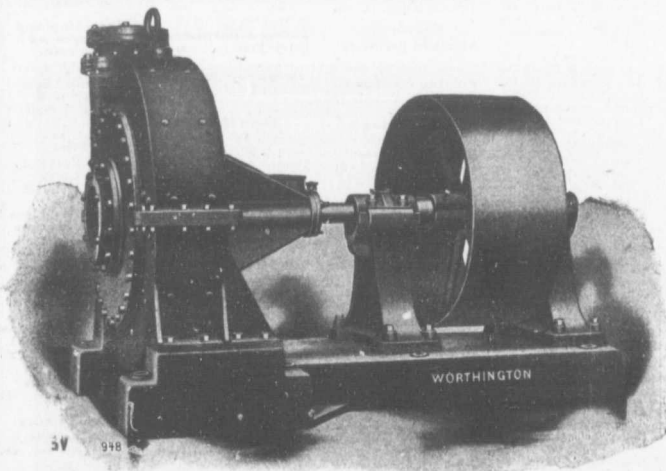
and Foundation Work.

By 5-ton Automatic Steam Pile Hammer,
Water Jet or Drop Hammers, Dock Building,
Submarine Work and Dredging.

BUILDING MOVER AND WRECKER
General Contracting.

JNO. E. RUSSELL, - Toronto
908 Queen St. E. - Phone M. 2007.

If you want to reach Municipalities advertise in the
CONTRACT RECORD.



TEN INCH TURBINE DREDGING PUMP.

With removable chrome-steel lining and manganese-steel impeller. Used for handling phosphate rock and for dredging purposes. Capacity 2,500 gallons per minute against 50 feet head.

**Pumps for
Water Works**

**Water Works
Systems Installed**

**Steam Boilers
and Filters**

*Builders in Canada for
Worthington Turbine
Pumps.*

**THE JOHN McDOUGALL
CALEDONIAN IRON WORKS**

**CO., LIMITED
Montreal, Que.**

MUNICIPAL DEPARTMENT

A RECENT INSTALLATION OF A LIERNUR SEWERAGE SYSTEM.

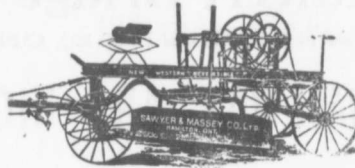
The pneumatic sewerage system invented some years ago by a former officer in the American volunteer army, Captain Liernur, has recently been introduced at Stansted, England. As this is the first application of the system in England, the following statements concerning it are of interest. They are taken from a summary of reports by medical officers of health in Essex:

"The village is a large one, having a population of about 2,000; the higher portion has for some considerable time possessed a system of sewerage by water carriage, but to similarly sewer the lower portion was found to be impossible, having regard to the large expenditure of water which would be found necessary for the copious flushing required owing to the peculiar basin-like formation of the district.

"After considerable inquiry the council decided to adopt the Liernur system, which may be described as a vacuum system of collection. As far as possible the sewage is conveyed to the works by gravitation, and a considerable portion of the liquid part of the sewage flows to the works by this means. For the carriage of the remaining portion, including that from the lower part of the village, vacuum suction is employed. At Stansted from the central pumping station a tubular sewage network of 4-in. cast-iron pipes leads to the streets. A vacuum is created in the cylinder at the station by means of a vacuum pump, and the whole bulk of the sewage is brought to the station without the addition of flushing water, so that the bulk of the sewage is not increased by extra water. By means of the suction a great velocity is attained in the sewers, from 10 ft. to 15 ft. per second.

"This air velocity, it is claimed, gives absolute security against stoppages, and in this way manholes, inspection chambers and overflow arrangements are done away with, besides which there is economy in construction of the works. At Stansted the quantity of sewage dealt with is about 10,000 gallons per day, and the whole system of the conveyance of the sewage lasts only ten minutes. There has to be no special provision for storm waters, as there is a separate system of drains for surface water.

"The discharge syphon is moved periodically, so that there can be no stagnation in the sewer. It could be emptied twenty times a day, if required, as it is done automatically. The cost comes to under 1s. per head of the population per annum. By this vacuum suction system the whole of the sewers are also cleaned and filled with pure air every day, or as often as desirable, and from the starting of the gas engine the complete service of system over the whole network of street



The Celebrated Steel Western Reversible Grader.
The most effective made.

HIGH GRADE . . .

Rock Crushers, Elevators and Screens to specification.
Road Graders, Plows, Rollers, Scrapers Etc.
Dump and Spreading Wagons and Carts.
Newest style moulds for concrete drain tiles, all sizes.
Engines specially built for drawing and driving above.

SAWYER & MASSEY CO.
Road Machinery Dept.
HAMILTON CANADA

Portland Cements

Highest Grade

Canadian, German, English and Belgian

DRAIN PIPES and Connections of all kinds.
PAVING BRICKS, ENAMELLED BRICKS,
FIRE BRICKS, FIRE CLAY, Etc., Etc.

F. HYDE & CO.,

31 Wellington Street

MONTREAL

INDEX TO ADVERTISEMENTS

In the "Canadian Architect and Builder."

Architects. Ontario Directory... III Quebec Directory... III	Contractors' Plant and Machinery Rice Lewis & Son... IV	Mantels, Grates, and Tiles. Holbrook & Mollington I O'Keefe Mantel & Tile Co... IV Rice Lewis & Son... IV	Sash Cord. Samson Cordage Works... ..
Architectural Sculptors. Holbrook & Mollington... I	Cements. Owen Sound Portland Cement Co... III The Rathbun Co... V	Mouldings. Decorators' Supply Co... X V	Stained and Decora- tive Glass Crown Art Stained Glass Co... IX Horwood & Sons, H... V Mackay Stained Glass Co... .. St. George, H. E... V Robert McCaus and V Stained Glass Co... V
Architectural Iron Work. Canada Foundry Co. xii Dominion Bridge Co. I Locomotive & Ma- chine Co... IV	Cement Block Machine McNally & Plum- mer... XIII	Mortar Colors and Shingle Stains. Cabot, Samuel... ..	Sanitary Supplies James Morrison Brass Mfg. Co... XV
Blue Print Paper. Hughes & Sons Co. IV	Corrosive Stains Cabot, Samuel... I	Ornamental Iron Work. Canada Foundry Co. xii Dennis Wire & Iron Covil	Shingles and Siding Metallic Roofing Co. xi Ormsby & Co., A. B. I Roofers Supply Co... II
Burlaps Richer Mfg. Co... IV	Drawing Instru- ments Thurston, A. G... II	Ornamental Plaster Hynes, W. J... IV	Soil Pipe. Toronto Foundry Co. II
Bridges Canadian Bridge Co. I Dominion Bridge Co. IX	Drawing Inks Wagner, Gunther... II	Painters. Montreal Directory... xvi Toronto Directory... xvi	Sheeting and Deafening Material. Cabot, Samuel... ..
Builders' Supplies. Lusifer Prism Co... xiv Montreal Directory... xvi Morrison, T. A... xvi Ontario Lumber Associa- tion... xvi Rhodes, Curry & Co. xvi Robinson & Co. D. vi Rice Lewis & Son... IV Smith-Warren Co... I Sand & Dredging... xvi	Elevators Fensom, John... I Otis Elevator Co... I Parkin Elevator Co. I Turnbull & Russell C. viii	Prisms. Hobb Mfg. Co... vii Toronto Plate Glass Co... .. viii	Shedding and Fittings Richmond Conduit Co... .. ix
Building Stone Dealers. Ambers, Red Stone Quarry Co... vi Credit Forks Stone Co. vi Broie, Jas... vi Hood & Son... vi Horse Shoe Quarry... vi Hagersville Con- tracting Co... vi Kline, J. B... vi Myers, Oakley... vi Niagara Quarry Co. vi Roeran & Co. D. vi Roman Stone Co. vi	Engravers. Alexander Engraving Co... V	Paints & Varnishes Berry Bros... xiv	Tiles. American Enameled Brick & Tile Co... Craven, Dunhill & Co... I Holbrook & Mollington I Permanent Deorative Glass Co... II Toronto Plat Glass Covil Wooliscroft & Son... II
Builders' Hard- ware. Rice Lewis & Son... IV	Folding Partitions. Springer, O. T... II	Parquetry Floors Elliott & Son Co... viii	School and Church Furniture. Globe Furniture Company... V Can. Office & School Furniture Co... xii
Bricks American I naneled Brick & Tile Co... I Beansville Brick & Ter. Cotta Co... II Don Valley Brick Works... 200 Toronto Pressed Brick & Terra Cotta Co... I Milton Brick Co... xiii	Grilles and Rollings. Dennis Wire & Iron Co... viii	Plate Glass Queen City Plate Glass & Mirror Co. IV Toronto Plate Glass Importing Co... viii	Wall Plaster Albert Mfg. Co. II
Legal. Quinn & Morrison... II	Granite Brunet, Jos... vi	Plumbers Montreal Directory... xvi Toronto Directory... xvi	Wire Lathing The B. Greening Wire Company... xvi
Laundry Machinery Troy Laundry Ma- chinery Co... IV	Hardwood Floor- ing. Seaman, Kent & Co... ..	Roofers Duthie & Sons, G... xvi Douglas B... xvi Forbes Roofing Co... xvi Nicholson & Co., D... xvi Rennie & Son, Robt... xvi Ormsby & Co., A. B. I Kinzham George... xvi Stewart & Co., W. T. xvi Williams & Co., H... xvi	Window Cord. Samson Cordage Works... ..
Mail Orders. The Cutler Mfg. Co. I	Heating. Sheldon & Sheldon Warden King & Son... IV	Rubber Tinting. Gutta Percha Rubber Co... II	Waterproofing for Brickwork Cabot, Samuel... I
Contractors. Toronto Contracting & Paving Co. III	Interior Decoration Elliott & Son Co... viii	Rubber Mats. Dunlop Tire Co... IV	
	Limbs. Ontario Lumber Associa- tion... xvi Robertson & Co... vi	Reflectors Frink, I. P... xvi	
	Roofing Material Metallic Roofing Co. xi Ormsby Limited, A. B. I Roofers Supply Co... II		

MUNICIPAL ENGINEERS, CONTRACTORS AND MATERIALS

WILLIS CHIPMAN

Hon. Grad. McGill University.
M. Can. Soc. C.E. M. Am. Soc. C.E.
Mem. Am. W.W. Ass'n.
**WATERWORKS, SEWERAGE WORKS, GAS
WORKS, ELECTRIC LIGHT AND
POWER PLANTS**
Reports, Surveys, Construction, Valuations
103 BAY STREET - TORONTO

R. E. SPEAKMAN, C.E.

A. M. Inst. C. E., 1875.
CONSULTING ENGINEER

Waterworks, Sewerage and Sewage Disposal.
Municipal Improvements.
Granolithic Pavements.
Electric Light Plants.
Drainage and Irrigation of Land.
Coal Handling Plant and Machinery.
Plans, Specifications and Estimates.
Construction and Valuations.

Canada Life Building - TORONTO

E. VON DER OSTEN & CO.,

Consulting Engineers
Industrial Plants, Waterworks,
Lighting and Power Plants
Sewerage and Sewage Disposal
Garbage Reduction Plants
Municipal Improvements
Rensselaire Ave. & High Park Road,
TORONTO, ONT.

Cable: Ackcoll

J. J. COLLINS

B.A.S., C.E., M.E., E.E.
Consulting Engineer
Ottawa, Ont., Canada

RODERICK J. PARKE

A.M. Can. Soc. C.E. A.M. Amer. Inst. E.E.
CONSULTING ELECTRICAL ENGINEER.
Electrical Light and Power.
Steam Plants, Gas Power Plants, Water
Power Plants.
Estimates. Tests. Reports. Valuations.
82-83 James Building - TORONTO, CAN.
Long Distance Telephones-Office and Residence
Cable Ad 0102 Electric W 1 000

John H. Jackson

CIVIL ENGINEER
WATER POWER, ELECTRIC RAIL-
WAYS, STRUCTURAL STEEL.
Niagara Falls, Canada
Associated with Charles H. Mitchell,
C. E., Hydraulic Engineer.

CECIL B. SMITH, M.A.E.

M. Can. Soc. C.E.
Constructing and Consulting Engineer
Hydraulic Power Plants, Municipal, Railway,
and general Civil Engineering Work.
Plans, Estimates, Specifications, Reports.
Cement, Concrete, and Steel Concrete
Phone Main 5724.
36 Toronto Street, Toronto.

CHARLES BRANDEIS

A. M. Can. Soc. C. E., A. M. Amer. Inst. R.R.
Mem. Amer. Electro-Chemical Soc., Etc.
CONSULTING ENGINEER
Estimates, Plans and Supervision of Hydraulic
and Steam-Electric Light, Power and Railroad
Plants. Specifications, Reports, Switchboard
Designs, Complete Factory Installations, Elec-
tric Equipment of Mines and Electro-Chemical
Plants.
Long Distance Telephone Main 3255.
Cable Address: Brandeis-Montreal.
W. U. Code, Univ. Edition.
62-63 Guardian Building MONTREAL

When Re-Babbiting your
Machinery order

MANGANESE ANTI-FRICTION METAL

Every pound guaranteed
Syracuse Smelting Works, Montreal.

THE ONTARIO ASPHALT BLOCK CO., L'T'D.

MANUFACTURERS OF
ASPHALT BLOCK PAVING
Information and samples furnished municipalities on application.
Main Office: WINDSOR, ONT. Works: WALKERVILLE, ONT.

THE CANADIAN SEWER PIPE CO.

MANUFACTURERS OF



FOR
Sewers, Culverts and Water Pipes
Inverts for Brick Sewers

WRITE FOR DISCOUNTS
ST. JOHNS, P.Q. HAMILTON, ONT. TORONTO, ONT

ALSEN'S, 45 Broadway, NEW YORK

THE OFFICIAL PRACTICAL
TEST OF CONCRETE VAULT
LIGHT CONSTRUCTION

UNDER THE PERSONAL DIRECTION
OF

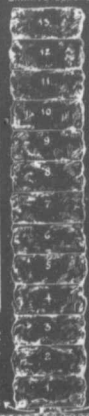
WM. BARCLAY PARSONS, C.E., M.A.M. Soc. C.E.
CHIEF ENGINEER R. T. COMMISSION

AND

S. L. F. DEYO, C. E., M. A. M. Soc. C. E.
CHIEF ENG. R. T. SUBWAY CONSTRUCTION CO.

ALSEN'S HAS BEEN SELECTED IN PREFERENCE
TO ALL OTHER BRANDS, FOR THE SUBWAY
RAPID TRANSIT STA-
TIONS OF THE ENTIRE
SYSTEM, REACHING
FROM THE BATTERY
TO THE BRONX.

GRANITE BLOCKS



MERELY SUSPENDED BETWEEN I-BEAMS
A SLAB OF

ALSEN CONCRETE

2 INCHES THICK
5 FEET WIDE
12 1-2 FEET LONG } 30 DAYS OLD

SUSTAINED 11,882 POUNDS OF
CONCENTRATED WEIGHT

ON AN IRON DISC 8 1-2 IN. IN DIAMETER

THOUGH HIGHEST IN PRICE, ALSSEN'S IS BEING
USED IN THIS VERY IMPORTANT CONSTRUCTION,
NOT ONLY BECAUSE OF ITS
GREATER STRENGTH, BUT
CHIEFLY BECAUSE OF ITS
ABSOLUTE SAFETY
IN ACTUAL WORK.



MADE BY TUCKER & VINTON, INC., NEW YORK CITY
RANDOM PATENTS

ewers and house connections, in all about miles, takes fifteen minutes.

"In the matter of house connections here is very little difference between those of the Liernur system and those of the water carriage and gravitation system. The Liernur house-fall or syphon-box is said to be a great improvement upon the existing models. It is at once a syphon, a seal, an intercepting and inspection chamber, and it also allows of the cutting-off of any house from the general system. This box, which is of cast-iron, and hermetically sealed, is placed in the most suitable position to enable the sewage from various water-closets, sinks, etc., to be discharged into it, and also to secure for the house connections as much as possible the benefit of the air-flush which enters the air inlet immediately above the box. The contents of this syphon-box are being constantly displaced by pressure, which is facilitated by the partial vacuum at the station. It is claimed that no contamination of the air by sewer gases, etc., is possible, the whole network of sewers being airtight. Noxious gases are drawn to the pumping station, and from thence carried to the retorts of the gasworks adjoining, and passed through the fires.

"It is stated that a saving in construction is affected, compared with the ordinary sewerage systems, by the small amount of excavation required, the absence of flushing chambers, manholes, ventilating columns, etc., and the small diameter of the pipes laid down.

"The economy in working expenses arises mainly from the fact that at the pumping station the quantity of sewage received is kept at the lowest possible limit for discharging into the high level gravitation sewer, and this is effected without prohibiting the use of water for flushing the closets, sinks, etc. Stoppages are said to be infrequent, and can soon be remedied and at little cost. No fall or incline of the ground is necessary for this system, but is used where available.

"As to the cost of the installation at Stansted, the figures given by the secretary of the English syndicate show that the actual capital cost is below £2 per head for 1,000 people, that number being now actually connected to the system at Stansted. The present installation will serve three times the population, and the actual plant at the pumping station would serve probably six times. They are able to draw the whole of the sewer gases to the pumping station, and there burn them, and also by the same means ventilate and purify the sewage tank, which adjoins the pumping station.

As to the working expenses, the actual cost comes out between 10d. and 1s. per head per annum, including lifting the total sewage 35 ft. to high-level sewer. The cost of one suction for cleaning the whole of the sewers and house connections, removing deposits, sewage, noxious gases, etc., in all works out at 10d., that is 10d. for cleaning out nearly 2 miles of sewer pipes. This figure of 10d. includes the cost of collecting the sewage and of its discharge on the irrigation fields.

"The machinery is fairly simple, and consists of the following: A boiler plate vacuum reservoir (with a capacity of about

2,800 imp. gal.), a gas engine, 8 h.p., a vacuum pump of three-quarters h.p., and a lifting pump, for pumping the sewage to the high-level sewer. Adjoining the pumping station is the storage tank, with a capacity of 30,000 gal., which represents the quantity of sewage estimated to be delivered in three days.

"The Liernur system of collection assists in the final disposal by delivering at the works a sewage which has been thoroughly broken up by the violence of its conveyance. It must be undoubtedly a great factor in the successful disposal of sewage, whatever method may be employed, bacterial, chemical, or treatment over land, if a sanitary committee and their engineer can depend on the unvarying quantity and quality of the sewage delivered at the outfall, and these advantages seemed to be secured by the Liernur pneumatic sewerage system.

"The sewage having been pumped into the high-level sewer is conveyed by gravitation to the sewage farm, 1 mile southwest of the village; the land covers an area of about 3 acres, and has a subsoil of light loam and gravel; mangels and osiers are grown, £50 per annum having been obtained in one year by the sale of the former. The effluent is conveyed on to a pasture about 5 ft. above water-level,

ultimately finding its way into the river Lea."—Engineering Record.

Prices of Building Materials.

PRESSED BRICK, Per M.

	F.O.B. Milton, Ont.	F.O.B. Montreal
MILITON PRESSED BRICK AND SEWER PIPE CO.		
Red No. 1.....		\$18 00
" 2.....		16 00
" 3.....		14 00
Buff No. 1.....		20 00
" 2.....		18 50
Brown.....		25 50
Roman Red.....		30 50
" Buff.....		33 50
" Brown.....		40 50
Hard Building.....		12 00
" Sewers.....		12 00
" Backing.....		11 50

Please write to head office, Milton, Ont., for catalogue and prices.

DON VALLEY PRESSED BRICK WORKS.

No. 1, 2 and 3 Red Pressed Bricks.....
 No. 1 and 2 Buff Pressed Brick.....
 No. 1 Brown Pressed Brick.....
 Pompeian Red, Buff and Brown Pressed Bricks
 Ornamental Bricks of all kinds for Mantel
 purposes.....
 Porous Terra Cotta Fireproofing of all
 Descriptions.....
 Vitrified Street-Paving Bricks.....
 1-Vitrified Foundation Bricks.....
 Common Stock Red and Grey Bricks.....
 Sewer Bricks.....
 Stone or Macadamized Roadways.....

Please write to head office 14 Toronto St. Toronto for catalogue and prices.

(Continued on page 14.)

JOHN GALT, C.E. & M.E.

MEM. CAN. SOC. C.E. AND C.E.A., ETC.
CONSULTING ENGINEER AND EXPERT
 National Trust Building
 20 King Street East Toronto
 Specialties—Water Supply and Sewerage.

THE IMPERIAL PORTLAND CEMENT CO.

LIMITED
 OWEN SOUND, ONT.

The Only Makers of the Celebrated IMPERIAL and the Makers of ONLY that One Brand and Quality of

PORTLAND CEMENT

Portland Cement...

HIGH GRADE GERMAN BRANDS FOR GRANOLITHIC AND ARTIFICIAL STONE SIDEWALKS.

**Sewer Pipes, Best English Cements. Best Belgian Cements
 Culvert Pipes, &c. W. McNALLY & CO., Montreal**



You Are Offended

If your friend won't go on your Bond. Be independent. Write to

The United States Fidelity & Guaranty Co.

They make a specialty of Contract and Municipal Officers' Bonds.

A. E. KIRKPATRICK, Manager for Canada.

6 COLBORNE STREET, - TORONTO, ONT.

PORTLAND CEMENT



SEWER PIPES
 FIRE BRICKS
 FIRE CLAY

ALEX. BREMNER

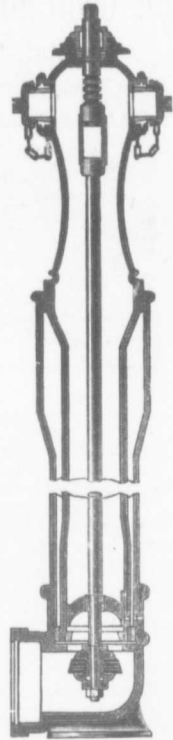
50 Bleury Street, MONTREAL





Frost Proof Hydrants

Our Toronto Hydrants are fitted with frost cases separated from the Hydrant, thereby preventing injury caused by upheavals of the ground by frost



Waterworks Supplies OF EVERY DESCRIPTION

**Pumps for Boiler Feeding,
Hydraulic Elevators and all
duties requiring the delivery of
liquids under heavy pressure**

CANADA FOUNDRY COMPANY LIMITED

Head Office and Works: TORONTO, ONT.

District Offices: MONTREAL HALIFAX OTTAWA WINNIPEG CALGARY VANCOUVER ROSSLAND

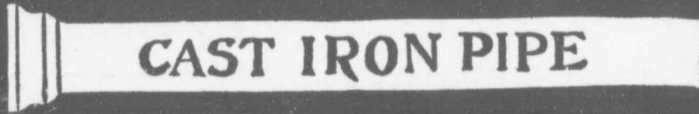
THOS. J. DRUMMOND,
President.

JAMES T. McCALL,
Secretary-Treasurer.

C. ED. GUDEWILL,
Vice-President.

Montreal Pipe Foundry Co., Limited

Special
Castings
Flange Pipe
Branches
Hydrants
Valves



CAST IRON PIPE

Valve Boxes
and
general
Water
Works
Supplies

Works at: { LACHINE, QUE.
THREE RIVERS, QUE.
LONDONDERRY, N. S.

Combined daily capacity:
175 Tons Pipes and Castings.

HEAD OFFICE CANADA LIFE BUILDING. MONTREAL

JAMES. THOMSON, President. J. G. ALLAN, Vice-President. JAMES. A. THOMSON, Secretary. JOHN CARTSHORE, Treasurer.

THE CARTSHORE-THOMSON PIPE & FOUNDRY CO. LIMITED.

Manufacturers of

Flexible and Flange Pipe,
Special Castings and all kinds of
Waterworks Supplies



CAST IRON PIPE

3 inches to 60 inches diameter.

For Water Gas, Culvert and Sewer

HAMILTON, ONT

THE GOOD ROADS MACHINERY COMPANY, LIMITED, Hamilton, Canada

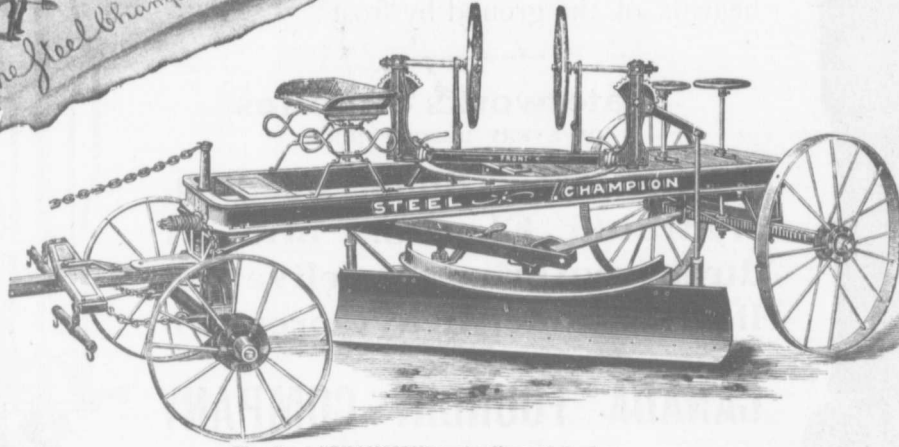
The Steel "CHAMPION" Reversible Road Machine

The Simplest, Strongest and Best. Don't it look it? Built for service. A strictly High-Grade Road Machine.



"CHAMPION"

Rock Crushers, Elevators, Revolving Screens, Street Mud Cleaners, Sweepers, Road Graders, Road Rollers, Macadam Spreading Wagons, Road Plows, Portable or Stationary Engines, Wheel and Drag Scrapers, Etc.



The Steel "CHAMPION" is the King of Graders.

All mechanics agree that the simpler the machine the more valuable it is. In complicated machines look out for trouble and expense.

Send for latest printed matter and our 1905 Calendar to

Good Road Machinery Company, Limited,

JOHN CHALLEN, President and General Manager.

Address—Late Killey Beckett Works, 144 York Street, HAMILTON, ONT.

Prices of Building Material

(Continued from page 12.)

Table listing prices for Toronto PRESSED BRICK AND TERRA COTTA WORKS, BEAMSVILLE BRICK AND TERRA COTTA CO., and TORONTO POTTERY CO. Includes items like Red No. 1, Buff No. 1, Roman Red, Hard Building, Sewers, Backing, Moulded and Ornamental, Terra Cotta String Courses, Roofing Tiles, Peerless Facing, Roman Red, Vitrified Paving Brick, Roofing Tile, Fire Brick, Common Rubble, Large flat Rubble, Foundation Blocks, Granite, Amherst Red Sandstone, Sackville N.B., red stone, Macmillan, and Myers-Northport Red or River.

Table listing prices for Philip Gray Sandstones, Dimension Stock Granite, CREDIT VALLEY STONE, ROMAN STONE, and SLATE. Includes items like Statensud, Granite curbing stone, Bucouche Olive Freestone, Brown Sandstone, Mont red sandstone, Black Pasture buff stone, Nova Scotia blue grey, Mary's, Footing, Dimension Stone, Granite, Dimension stock granite, Rubble, Brown Coursing, Grey courst, Grey dimension, Sills, Hollow Block, Window Heads, String Courses, Chimney Caps, Roofing, and Terra Cotta Tiles.

Table listing prices for PORTLAND CEMENT (CARLOADS.) and American (in Bags). Includes items like Canadian (Packages, 350 lbs. net.), Rathbun's Star, Trowel, Samson, Magnet, Monarch, Hercules, Imperial, Crescent, Diamond, Giant, Helderberg, Alsen, Lehigh, Iron Clad, Invicta, Adirondack, Vulcanite, English in Barrels, Brook's Shoobridge Anchor, Belgian, German, Keene's Superfine Whites, Keene's Coarse Whites, Fire Bricks, and Plaster Calcined N.B.

CORRECTED UP TO JANUARY 10TH