

**CIHM  
Microfiche  
Series  
(Monographs)**

**ICMH  
Collection de  
microfiches  
(monographies)**



**Canadian Institute for Historical Microreproductions / Institut canadien de microreproductions historiques**

**© 1994**

Technical and Bibliographic Notes / Notes techniques et bibliographiques

The Institute has attempted to obtain the best original copy available for filming. Features of this copy which may be bibliographically unique, which may alter any of the images in the reproduction, or which may significantly change the usual method of filming, are checked below.

L'Institut a microfilmé le meilleur exemplaire qu'il lui a été possible de se procurer. Les détails de cet exemplaire qui sont peut-être uniques du point de vue bibliographique, qui peuvent modifier une image reproduite, ou qui peuvent exiger une modification dans la méthode normale de filmage sont indiqués ci-dessous.

- Coloured covers/  
Couverture de couleur
- Covers damaged/  
Couverture endommagée
- Covers restored and/or laminated/  
Couverture restaurée et/ou pelliculée
- Cover title missing/  
Le titre de couverture manque
- Coloured maps/  
Cartes géographiques en couleur
- Coloured ink (i.e. other than blue or black)/  
Encre de couleur (i.e. autre que bleue ou noire)
- Coloured plates and/or illustrations/  
Planches et/ou illustrations en couleur
- Bound with other material/  
Relié avec d'autres documents
- Tight binding may cause shadows or distortion  
along interior margin/  
La reliure serrée peut causer de l'ombre ou de la  
distorsion le long de la marge intérieure
- Blank leaves added during restoration may appear  
within the text. Whenever possible, these have  
been omitted from filming/  
Il se peut que certaines pages blanches ajoutées  
lors d'une restauration apparaissent dans le texte,  
mais, lorsque cela était possible, ces pages n'ont  
pas été filmées.

- Coloured pages/  
Pages de couleur
  - Pages damaged/  
Pages endommagées
  - Pages restored and/or laminated/  
Pages restaurées et/ou pelliculées
  - Pages discoloured, stained or foxed/  
Pages décolorées, tachetées ou piquées
  - Pages detached/  
Pages détachées
  - Showthrough/  
Transparence
  - Quality of print varies/  
Qualité inégale de l'impression
  - Continuous pagination/  
Pagination continue
  - Includes index(es)/  
Comprend un (des) index
- Title on header taken from: /  
Le titre de l'en-tête provient:
- Title page of issue/  
Page de titre de la livraison
  - Caption of issue/  
Titre de départ de la livraison
  - Masthead/  
Générique (périodiques) de la livraison

- Additional comments: /  
Commentaires supplémentaires:

This item is filmed at the reduction ratio checked below /  
Ce document est filmé au taux de réduction indiqué ci-dessous.

10X	12X	14X	16X	18X	20X	22X	24X	26X	28X	30X	32X
				/							

The copy filmed here has been reproduced thanks to the generosity of:

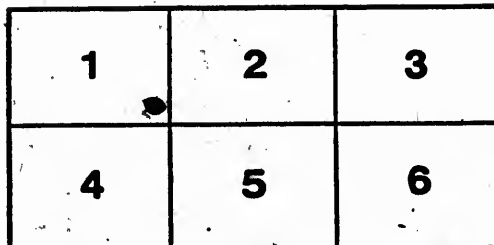
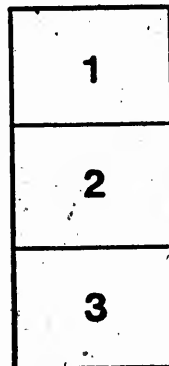
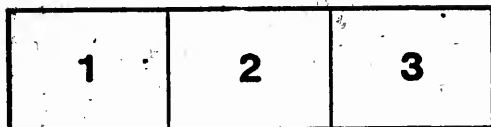
The United Church of Canada Archives  
Victoria University Archives

The images appearing here are the best quality possible considering the condition and legibility of the original copy and in keeping with the filming contract specifications.

Original copies in printed paper covers are filmed beginning with the front cover and ending on the last page with a printed or illustrated impression, or the back cover when appropriate. All other original copies are filmed beginning on the first page with a printed or illustrated impression, and ending on the last page with a printed or illustrated impression.

The last recorded frame on each microfiche shall contain the symbol  $\rightarrow$  (meaning "CONTINUED"), or the symbol  $\nabla$  (meaning "END"), whichever applies.

Maps, plates, charts, etc., may be filmed at different reduction ratios. Those too large to be entirely included in one exposure are filmed beginning in the upper left hand corner, left to right and top to bottom, as many frames as required. The following diagrams illustrate the method:



L'exemplaire filmé fut reproduit grâce à la générosité de:

The United Church of Canada Archives  
Victoria University Archives

Les images suivantes ont été reproduites avec le plus grand soin, compte tenu de la condition et de la netteté de l'exemplaire filmé, et en conformité avec les conditions du contrat de filmage.

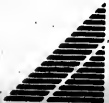
Les exemplaires originaux dont la couverture en papier est imprimée sont filmés en commençant par le premier plat et en terminant soit par la dernière page qui comporte une empreinte d'impression ou d'illustration, soit par le second plat, selon le cas. Tous les autres exemplaires originaux sont filmés en commençant par la première page qui comporte une empreinte d'impression ou d'illustration et en terminant par la dernière page qui comporte une telle empreinte.

Un des symboles suivants apparaîtra sur la dernière image de chaque microfiche, selon le cas: le symbole  $\rightarrow$  signifie "A SUIVRE", le symbole  $\nabla$  signifie "FIN".

Les cartes, planches, tableaux, etc., peuvent être filmés à des taux de réduction différents. Lorsque le document est trop grand pour être reproduit en un seul cliché, il est filmé à partir de l'angle supérieur gauche, de gauche à droite, et de haut en bas, en prenant le nombre d'images nécessaire. Les diagrammes suivants illustrent la méthode.

MICROCOPY RESOLUTION TEST CHART

(ANSI and ISO TEST CHART No. 2)



APPLIED IMAGE  inc

1653 East Main Street  
Rochester, New York 14609 USA  
(716) 482 - 0300 - Phone  
(716) 288 - 5989 - Fax

Palm.

BV

430

P. 72

H37

Helps to the Use

of the

Presbyterian

Book of Praise



# HELPS TO THE USE

OF THE

## Presbyterian Book of Praise

*Prepared under the direction of the Music Committee of  
the Presbyterian Church in Canada.*

---

THE suggestions which appear in the following columns indicate the rate of speed at which each tune ought to be sung in relation to the words with which it is there associated.

In deciding upon the *tempo* the compilers have, in every instance, reached a decision after most careful consideration of the views of the great authorities on church music, and in keeping with the nature of the thoughts expressed by the words, the structure of the tune itself, and the "congregational" purpose in view.

The marks indicate the speed considered best for use in a congregation of average size. When the number present considerably exceeds 400 or 500, the speed may, where deemed advisable, be lessened. When, on the other hand, comparatively few are present, as also at Prayer Meetings, Sabbath Schools, and Young People's gatherings, the time may frequently, with advantage, be slightly accelerated.

The speed has been indicated in two ways: The first column specifies the number of times in which the standard form of note as

printed is to be sung in one minute. Thus, if  $\mathcal{C}$  be the standard form of note of a tune (as is usually the case in the BOOK OF PRAISE),  $\mathcal{C}.60$  means that one full second will be occupied in the singing of it, while  $\mathcal{C}.92$  would indicate that about three quarters of one second would be allowed. As an alternative form, the second column indicates the number of seconds which would be occupied in singing the tune from beginning to end in strict time.

No provision has been made for variation from the strict time, as this must be determined by the character of the successive thoughts to be expressed. It need hardly be stated that the "Amen," which is not included in the *tempo* given, must always be sung reverently, and in very moderate time.

An earnest effort has been made to avoid at once that unseemly haste which borders on the irreverent, and an equally objectionable heaviness; and to attain a reverent mean, in keeping with the grave sweet melody of the Sanctuary, and an interesting variety of speed suited to the structure of each tune, and the character of each Psalm and Hymn.

Cordial thanks are due R. A. BECKET, Esq., Montreal, who, by unceasing labour and patient investigation, has rendered very valuable service in the preparation of these helps.

ALEXANDER MACMILLAN.

TORONTO, April, 1899.

No

- 1
- 2
- 3
- 4
- 5
- 6
- 7
- 8
- 9
- 10
- 11
- 12
- 13
- 14
- 15
- 16
- 17
- ~~18~~
- 19
- 20
- 21
- 22
- 23
- 24
- 25
- 26
- 27
- 28
- 29
- 30
- 31
- 32
- 33



# PSALTER.

No.	TUNE.	Metronome Tempo.	Time in Seconds.	No.	TUNE.	Metronome Tempo.	Time in Seconds.
1	Tallis .. .. .	90	80..21	34	Stroudwater ..	90	92..27
2	York .. .. .	90	72..26		Winchester Old ..	90	84..23
3	Gräfenberg .. .	90	76..25	35	St. Magnus.. .	90	72..27
4	Bedford .. .. .	90	72..26	36	St. John .. .	90	96..33
5	Linton .. .. .	90	116..29	37	St. Olave .. .	90	92..21
6	Stroudwater .. .	90	92..27	38	Dundee .. .. .	90	69..28
7	Tallis .. .. .	90	80..21		Farrant .. .. .	90	76..22
8	St. Paul .. .. .	90	69..24	39	St. Flavian .. .	90	80..24
9	Salzburg .. .. .	90	88..29	40	Evan .. .. .	90	72..27
10	Crediton .. .. .	90	80..24	41	Meribah .. .. .	90	56..38
11	Stowe .. .. .	90	100..39	42	Howarth .. .. .	90	88..29
12	Walton .. .. .	90	100..29	43	Jackson .. .. .	90	60..32
13	Winchester Old ..	90	84..23		Downs .. .. .	90	72..27
14	Wiltshire .. .. .	90	88..29	44	St. Stephen.. .	90	88..30
	Rest .. .. .	90	80..24	45	Aspurg .. .. .	90	84..23
15	Stanley .. .. .	90	100..29	46	Selma .. .. .	90	69..28
16	St. Stephen .. .	90	88..29	47	St. Alphege.. .	90	88..22
	St. George's Edin- burgh (*Coda not included)	90	88..29	48	St. Gregory.. .	90	88..29
17	Serenity .. .. .	90	92..25	49	Sheffield .. .	90	63..29
	Prague .. .. .	90	84..23	50	St. Saviour.. .	90	88..22
18	Peterborough .. .	90	84..23	51	St. Leonard .. .	90	76..25
19	St. Magnus.. .	90	72..27	52	Jackson .. .. .	90	60..32
20	Farrant .. .. .	90	76..22		Dunfermline .. .	90	69..29
21	Scott .. .. .	90	80..24	53	Eagley .. .. .	90	96..26
22	Adeste Fideles ..	90	108..45	54	Winchester .. .	90	80..24
23	Martyrdom .. .	90	84..30	55	St. Thomas.. .	90	92..27
24	Irish .. .. .	90	88..29	56	Evan .. .. .	90	72..27
25	Dunfermline .. .	90	69..29	57	Harrington .. .	90	88..29
26	St. Stephen .. .	90	88..29		St. Bernard.. .	90	72..27
27	London New .. .	90	72..27	58	Morlaix .. .. .	90	92..21
28	Solomon .. .. .	90	80..24	59	Stella .. .. .	90	92..47
29	Balerna .. .. .	90	84..30	60	Wiltshire .. .	90	88..29
30	Spohr .. .. .	90	96..26	61	St. Ann .. .. .	90	69..28
31	Invocation .. .	90	100..86	62	Winchester Old ..	90	84..23
	St. Paul .. .. .	90	69..24	63	Arnold.. .. .	90	80..31
32	Northrepps .. .	90	80..24	64	Farrant .. .. .	90	76..22
33	St. Michael.. .	90	80..24		St. Neot .. .. .	90	80..31
				65	Philadelphia .. .	90	66..29
				66	Crediton .. .. .	90	80..24

# Cæffer.

No.	TUNE.	Metronome Tempo.	Time in Seconds.	No.	TUNE.	Metronome Tempo.	Time in Seconds.
67	St. Michael..	00	84..23	93	Gräfenberg ..	00	76..25
68	Irish ..	00	88..29	94	Felix ..	00	66..29
	Denfield ..	00	66..22	95	Huddersfield ..	00	80..31
69	Irish ..	00	88..29	96	French ..	00	60..32
	Christos ..	00	88..46	97	Sandon ..	00	96..50
70	Old Saxony..	00	60..32	98	Arnold ..	00	80..31
71	St. Leonard ..	00	76..25	99	Old 124th ..	00	96..50
72	Old Hundredth ..	00	60..32	100	St. Andrew ..	00	88..29
73	St. Theodulph ..	00	100..38	102	Batty ..	00	80..24
	St. Alphege ..	00	88..22	103	Colëshill ..	00	60..32
74	Duke Street ..	00	100..38		Martyrdom ..	00	84..30
75	Wareham ..	00	96..30	104	New Saxony ..	00	66..36
76	Jackson ..	00	60..32	105	Eastgate ..	00	108..38
77	Newton Ferns ..	00	80..24	106	Minto..	00	76..25
78	Dunfermline ..	00	69..29	107	Hull ..	00	88..33
79	Glasgow ..	00	84..30	108	St. John ..	00	96..32
80	St. David ..	00	76..25	109	Dundee ..	00	66..29
81	Tiverton ..	00	72..27	110	Manchester ..	00	80..31
82	Albano..	00	84..23	111	Kilmarnock ..	00	60..30
83	Luther's Hymn ..	00	66..51	112	Martyrdom ..	00	84..30
84	St. Ann ..	00	69..28	113	Leuchars ..	00	84..23
85	Gainsborough..	00	84..30		Broughton..	00	63..46
86	Ernan ..	00	56..34	114	Duke Street ..	00	100..38
87	Artaxerxes ..	00	80..24	115	Walton ..	00	100..29
	St. Paul ..	00	72..23	116	Melcombe ..	00	72..27
88	Angel Choir ..	00	88..22		Mainzer ..	00	76..25
89	Sawley..	00	92..27	117	York ..	00	72..26
90	Tallis ..	00	80..21	118	Newton Ferns ..	00	80..24
	Palestrina ..	00	92..27	119	Holy Cross ..	00	96..26
91	Bedford ..	00	72..26	120	Darwall ..	00	96..35
92	Farrant ..	00	76..22	121	Nativity ..	00	88..22

No.

1

2

3

4

5

6

7

8

9

10

12

13

14

15

16

17

18

19

20

21

22

23

24

25

26

27

28

29

30

31

32

33

# THE HYMNAL.

No.	TUNE.*	Metronome Tempo.	Time in Seconds.	No.	TUNE.*	Metronome Tempo.	Time in Seconds.
1	Nicea . . . . .	0	80..48	35	St. Saviour . . . . .	0	88..22
	Trinity . . . . .	0	84..46	36	Naomi . . . . .	0	58..33
2	Tichfield . . . . .	0	72..53	37	Northrepps . . . . .	0	76..25
3	Rivaulx . . . . .	0	84..34	38	St. Matthew Irish . . . . .	0	92..55
4	Regent Square . . . . .	0	96..30	39	Aspur . . . . .	0	88..29
5	Lebanon . . . . .	0	84..30	40	Fingal . . . . .	0	84..23
6	Litany . . . . . (last line slower)	0	76..25	41	St. Bernard . . . . .	0	80..24
7	Felix . . . . .	0	66..29	43	Liguria . . . . .	0	84..23
8	Dunfermline . . . . .	0	69..28	44	Trust . . . . .	0	60..32
9	Winchester Old . . . . .	0	84..23	45	Margaret . . . . .	0	84..32
10	Wiltshire (New St. Ann) . . . . .	0	88..29	46	Greenhill . . . . .	0	72..40
12	Sawley . . . . .	0	92..27	46	Lambeth . . . . .	0	80..24
13	Creation . . . . .	0	100..38	47	Spohr . . . . .	0	92..23
14	Old Hundredth . . . . .	0	60..32	47	Spohr . . . . . Substitution . . . . .	0	88..43
15	Wareham . . . . .	0	96..30	48	St. Drostan . . . . .	0	76..38
16	Hanover . . . . .	0	96..30	48	St. Drostan . . . . .	0	84..23
17	Harts . . . . .	0	92..21	49	Commandments . . . . .	0	80..24
18	Last Hope . . . . .	0	88..33	50	Eden . . . . .	0	80..36
19	Dominus Regit Me . . . . .	0	80..24	50	Eden . . . . . Communion . . . . .	0	80..36
20	Auchincarn . . . . .	0	108..36	51	St. Cross . . . . .	0	84..44
21	Gotha . . . . .	0	84..23	52	Devotion . . . . .	0	84..38
	Newton Ferns . . . . .	0	84..23	53	Passion Chorale . . . . .	0	66..58
22	Houghton . . . . .	0	100..29	54	Near the Cross . . . . .	0	50..38
23	Walton . . . . .	0	100..29	55	Stabat Mater . . . . .	0	60..48
24	Dix . . . . .	0	96..30	56	Newcastle . . . . .	0	80..33
25	Advent . . . . .	0	92..34	57	Lebbaeus . . . . .	0	88..22
26	Nativity . . . . .	0	88..22		Agnes . . . . .	0	72..27
	Antioch . . . . .	0	54..42	58	Howard . . . . .	0	76..33
27	Dunfermline . . . . .	0	69..28	59	St. George's Windsor . . . . .	0	92..42
28	Noel . . . . .	0	92..42	60	Wirtemberg . . . . .	0	76..32
	Carol . . . . .	0	108..53	61	Easter Hymn . . . . .	0	84..46
29	St. Louis . . . . .	0	88..44	62	Victory . . . . .	0	92..43
30	Bethlehem . . . . .	0	96..50	63	Franconia . . . . .	0	88..22
31	Dix . . . . .	0	96..30	64	St. Magnus . . . . .	0	72..27
32	Vienna . . . . .	0	84..23	65	Meinhold . . . . .	0	69..45
33	St. Ninian . . . . .	0	100..38		St. Albanus . . . . .	0	88..41
34	Adeste Fideles . . . . .	0	100..48	66	Triumph . . . . .	0	88..33
				67	Look, Ye Saints . . . . .	0	84..46

\* The "Amen" not included.



## The Hymnal.

No.	TUNE.	Metronome Tempo.	Time in Seconds.	No.	TUNE.	Metronome Tempo.	Time in Seconds.	No.
68	St. Andrew's	0	84.46	107	Melcombe	0	72.27	142
	St. Maby'n	0	84.23	108	Holly	0	100.38	143
69	Darwall	0	96.35	109	Veni Creator	0	84.51	144
70	Naaman	0	80.24	110	Berlin	0	76.19	
71	Cooling	0	100.29	111	Linton	0	116.30	145
72	St. Lawrence	0	60.32		St. Cuthbert	0	76.25	146
73	Wareham	0	96.30	112	Coblentz	0	84.52	147
	Tranquility	0	100.46	113	Stella	0	92.47	
74	St. Mary Magdalene	0	80.48	114	Irene	0	80.24	148
	Penitence	0	80.48		Consolator	0	80.24	149
76	Hesperus	0	92.31	115	St. Botolf	0	84.17	
77	St. Bees	0	80.24	116	Gower's Litany	0	76.25	150
78	Fiducia	0	84.23	117	Gräfenberg	0	76.25	
79	Gounod	0	72.43	118	Palestrina	0	92.27	151
	Bohemia	0	72.40	119	Chenies	0	96.40	
80	Constance	0	88.44	120	Bedford	0	72.27	
81	Old Saxony	0	60.32	121	Jerusalem	0	96.40	
83	Broomsgrove	0	120.32	122	I Need Thee Every Hour	0	60.48	152
84	St. Andrew's	0	84.46		Munich	0	80.48	153
	Leipsic	0	84.23	123	Munich	0	80.48	
85	Southwick	0	88.49	124	London New	0	76.25	154
86	Redemption	0	72.40	125	St. Stephen	0	84.30	
87	Advent	0	88.35	126	Artaxerxes	0	80.24	155
88	Nicolai	0	63.90	127	Barrow	0	54.27	156
89	Prague	0	80.24	128	Newington	0	76.25	
90	Miles Lane	0	84.34	129	Wondrous Love	0	80.48	157
	(pauses not included)			130	Wareham	0	96.30	159
	Coronation	0	84.40		Soldau	0	60.32	160
91	Winchester Old	0	84.23	131	Oberlin	0	84.23	
92	Nativity	0	88.22		Chamouni	0	63.46	161
93	Cyprus	0	100.29	132	Stephanos	0	80.24	
94	Waterstock	0	88.33		St. Helen's	0	88.22	
95	Perfect Rest	0	96.40		Art Thou Weary	0	92.27	162
	Monica	0	92.42	133	St. Catherine	0	92.47	
96	Lebanon	0	84.30	134	The Ninety and Nine	0	108.47	163
97	Laudes Domini	0	104.30		Bidborough	0	88.27	164
98	Culbach	0	88.22	135	Bidborough	0	88.27	165
99	Innocents	0	92.21	136	Spohr	0	92.27	166
100	Greenland	0	100.38	137	Nain	0	92.21	
101	Haydn	0	66.22	138	Vox Delecti	0	69.56	
102	St. Michael	0	80.24		Audite Audientes	0	72.53	167
103	Naomi	0	58.33	139	St. Bernard	0	76.25	168
104	Tallis	0	80.21	140	Eden	0	84.34	169
105	Milton	0	60.28		Bera	0	108.36	
106	St. Paul	0	69.24	141	St. Catherine	0	88.44	170

# The Hymnal.

Time in Seconds.

.27  
.38  
.51  
.19  
.30  
.25  
.52  
.47  
.24  
.24  
.17  
.25  
.27  
.40  
.27  
.40  
  
.48  
.48  
.25  
.30  
.24  
.27  
.25  
.48  
.30  
.32  
.23  
.46  
.24  
.22  
.27  
.47  
  
.47  
.27  
.27  
.21  
.56  
.53  
.25  
.34  
.36  
.44

No.	TUNE.	Metronome Tempo.	Time in Seconds.
142	Come Unto Me		76.. 51
143	Redemption		76.. 38
144	Invitation <i>(refrain not included)</i>		84.. 30
145	Redemption		76.. 38
146	Cantus		96.. 30
147	Comfort Consolation		84.. 34 88.. 44
148	Life for a Look		72.. 47
149	St. David		80.. 24
	Belmont		88.. 29
150	Happy Day		126.. 57
	Winchester		80.. 24
151	Trust		84.. 32
	St. Crispin		88.. 33
	Faith		84.. 34
	Woodworth		92.. 35
152	Welcome Voice		72.. 40
153	Sarum		76.. 25
	Risesholme		76.. 25
154	St. Helen's		92.. 21
	Be at Rest		80.. 24
155	St. Catherine		92.. 47
156	Old 124th <i>(with repeat)</i>		96.. 50
157	Scott		80.. 24
159	St. Leonard		80.. 24
160	Haddo		84.. 30
	Kedron		84.. 40
161	Petra		76.. 38
	Toplady		60.. 36
	Gethsemane		72.. 40
162	Hollingside		80.. 48
	Refuge		54.. 53
	Martyr		108.. 70
163	St. Philip		92.. 23
164	Woodman		72.. 27
165	Weber		69.. 28
166	Blumenthal		76.. 51
	Sorrento		72.. 54
167	Urswicke		100.. 38
168	Pass Me Not		92.. 42
169	St. Mabyn		88.. 22
	Bird		108.. 27
170	Boniface		56.. 34

No.	TUNE.	Metronome Tempo.	Time in Seconds.
171	Lebbaeus		88.. 22
172	Pater Omnium		92.. 47
173	Dalkeith		80.. 36
	Dalkeith (2nd form)		88.. 44
	Morecambe		88.. 44
175	Hold Thoumy Hand		96.. 40
176	St. Agnes, Durham		96.. 26
177	Faith		84.. 23
178	St. Peter		84.. 23
179	Burton Agnes		80.. 24
180	More Love to Thee		88.. 44
	Desire		88.. 38
181	Barkworth		88.. 22
182	Battishill		88.. 22
183	King's College		92.. 43
184	Trust		84.. 32
185	St. Margaret		63.. 38
186	Zaanaim		84.. 34
187	St. Catherine		92.. 47
188	St. Chrysostom <i>(not including the refrain, which should be slower)</i>		80.. 36
189	Belmont		88.. 29
190	Rest		84.. 40
	Swiss Melody		108.. 47
191	The Heart's Re-		
	fuge		92.. 63
192	Savoy Chapel		92.. 42
193	Day of Rest		92.. 42
194	Bentley		100.. 38
195	Wentworth		92.. 31
196	Rest		80.. 30
	Newcastle		80.. 33
197	Mariners		69.. 28
	Nettleton		69.. 42
198	Rathbun		92.. 31
199	Pax Tecum		76.. 25
200	Farrant		76.. 22
201	Balerna		84.. 30
202	St. Paul		69.. 24
203	Newington		76.. 25
204	Wareham		88.. 33
205	Consecration		96.. 40
206	Pilgrim Song		100.. 38

## The Hymnal.

No.	TUNE.	Metronome Tempo.	Time in Seconds.	No.	TUNE.	Metronome Tempo.	Time in Seconds.	No.
207	Olivet..	88	38	246	Augustine ..	88	22	288
208	Moments of Prayer	96	40		Day of Praise ..	88	29	289
209	Rosmore ..	108	53	247	Laban ..	100	19	290
210	Edina..	100	38	248	Narenza ..	84	23	292
	Hermas ..	100	38	249	St. Frances ..	80	24	293
211	Every Day ..	66	44	250	All Saints (new)	96	40	294
212	Lavington ..	80	36	251	Pentecost ..	100	29	
213	Falfield ..	80	48	252	Rosmore ..	108	53	295
	Beecher ..	80	48	253	St. John Damascene	60	32	
214	St. Jude ..	76	32	254	Vigilate ..	80	24	296
215	Stella ..	92	47	255	Day of Rest ..	92	42	297
216	Draw Me Nearer	84	46	256	Morning Light ..	100	39	298
217	Whiter than Snow	100	43	257	Wimbledon ..	100	27	
218	Dennis ..	84	28	258	Redemption ..	72	40	299
219	Boylston ..	63	23		St. Austin ..	80	36	300
220	Selma..	69	28	259	Ein' Feste Burg	60	72	301
221	St. Flavian	84	23	260	Stand up for Jesus	100	39	302
	Dalehurst ..	80	24	261	St. Philip ..	108	36	303
222	Kilmarnock	60	30	262	St. Gertrude ..	108	53	304
223	Horbury ..	66	38	263	Hiding in Thee..	120	48	306
	Excelsior ..	84	46	264	Barber ..	50	19	307
224	St. Asaph ..	88	44	265	Bucer..	88	22	308
225	Aurelia ..	92	42	266	Northrepps ..	76	25	
227	Leipsic ..	84	23		Solomon ..	88	22	309
228	Dornance ..	63	23	267	Irish ..	88	29	
229	Consolator..	80	24	269	London New ..	76	25	310
	Horton ..	80	24	270	Morning ..	88	22	312
230	Nain ..	92	21	271	University College	88	22	313
231	Mainzer ..	76	25	272	Innocents ..	92	21	
232	Ernan ..	60	32	273	Morlaix ..	92	21	314
	Ontario ..	104	37	274	St. Asaph ..	92	42	316
233	Canonbury ..	76	26		St. Oswald ..	84	23	
234	St. Anselm ..	80	24	275	Oberlin ..	88	22	317
235	Hesperus ..	92	31	276	St. Aidan ..	92	23	
236	Resignation ..	104	28	277	God is Near Thee	66	25	318
237	Mozart ..	88	33	278	Adeste Fideles..	100	48	
238	Vienna ..	84	23	279	Stanley ..	96	30	
239	Diligence ..	96	40	280	St. Michael ..	80	24	319
240	Wells..	92	47	281	St. Olave ..	92	20	
	Heathlands ..	80	36	282	Olmütz ..	54	27	320
241	Bethany ..	88	44	283	Serenity ..	92	25	321
242	Tolcarne ..	80	24	284	St. Olave ..	92	20	322
243	Eirene ..	100	38	285	St. Frances ..	80	24	323
244	Raynolds ..	104	37	287	Leuchars ..	84	23	324
245	True Hearted ..	92	42		Broughton..	66	44	325

# The Hymnal.

Time in Seconds.	No.	TUNE.	Metronome Tempo.	Time in Seconds.	No.	TUNE.	Metronome Tempo.	Time in Seconds.
8. 22	288	Broadlands .. ..	0	92. 42	326	Retreat .. ..	0	96. 30
8. 22	289	St. James .. ..	0	72. 27	327	Requiem .. ..	0	80. 48
0. 19	290	Holly .. ..	0	100. 38	328	Requiescat .. ..	0	69. 49
4. 23	292	Guide .. ..	0	112. 39	329	Bath .. ..	0	69. 42
0. 24	293	Trusting Jesus ..	0	50. 38	330	Meinhold .. ..	0	66. 47
6. 40	294	Resignation .. ..	0	96. 30	331	St. Sylvester (with- out refrain)	0	50. 29
0. 29		Landskron .. ..	0	100. 29		(Including refrain)		
8. 53	295	Hamburg .. ..	0	56. 34	332	Luther's Hymn ..	0	50. 90
0. 32		Trust .. ..	0	84. 32	333	Fleming .. ..	0	66. 51
0. 24	296	Baden .. ..	0	76. 44	333	Fleming .. ..	0	88. 41
2. 42	297	He Leadeth Me ..	0	84. 45	334	Montgomery .. ..	0	92. 42
0. 39	298	Submission (No. 1)	0	92. 26	335	Woolwich .. ..	0	100. 23
0. 27		Submission (No. 2)	0	92. 26	336	Emmanuel .. ..	0	88. 19
2. 40	299	St. Helen .. ..	0	96. 60	337	Belmont .. ..	0	88. 29
0. 36	300	Harvey .. ..	0	50. 38		Jerusalem .. ..	0	96. 26
0. 72	301	Salzburg .. ..	0	88. 29	338	St. Stephen .. ..	0	84. 30
0. 39	302	Sawley .. ..	0	92. 27	339	Paradise (Smart)	0	92. 42
8. 36	303	St. Andrew .. ..	0	88. 29		Paradise (Barnby)	0	80. 48
8. 53	304	St. Theresa .. ..	0	72. 40		Paradise (Dykes)	0	88. 46
0. 48	306	St. Ambrose .. ..	0	76. 25	340	St. Asaph .. ..	0	88. 44
0. 19	307	Morlaix .. ..	0	92. 21	341	St. Catharine ..	0	100. 38
8. 22	308	Zinzendorf .. ..	0	72. 25	342	Pilgrim Song ..	0	96. 40
6. 25		(pauses not included)			343	The Blessed Home	0	96. 40
8. 22	309	Leoni .. ..	0	84. 46	344	Petra .. ..	0	76. 38
8. 29		Covenant .. ..	0	100. 38	345	Benevento .. ..	0	80. 48
6. 25	310	Batty .. ..	0	84. 23	346	Rutherford .. ..	0	84. 46
8. 22	312	Shining Shore ..	0	69. 42	347	Lancashire .. ..	0	96. 40
8. 22	313	Jesus, I am Rest- ting .. ..	0	84. 69	348	Pearsall .. ..	0	92. 42
2. 21	314	Borlan .. ..	0	100. 29	349	St. Alphege .. ..	0	92. 21
2. 21	316	Mannheim .. ..	0	76. 37	350	Day of Rest .. ..	0	92. 42
2. 42		Feniton Court ..	0	88. 33	351	Ewing .. ..	0	92. 42
4. 23	317	Pilgrim .. ..	0	66. 44	352	Laus Deo .. ..	0	92. 34
8. 22		Rousseau .. ..	0	80. 36	353	Gounod .. ..	0	72. 43
2. 23	318	Lux Benigna .. ..	0	63. 46	354	All Saints .. ..	0	88. 33
6. 25		Lux Beata .. ..	0	88. 55	355	Realms of the Blest	0	80. 24
0. 48		Sandon .. ..	0	100. 48	356	St. Asaph .. ..	0	92. 42
6. 30	319	Pilgrims (Smart)	0	104. 55		Sanctuary .. ..	0	88. 44
0. 24		Pilgrims (Barnby)	0	104. 55	357	Barber .. ..	0	50. 19
2. 20	320	All the Way .. ..	0	80. 36	358	Bemerton .. ..	0	92. 21
4. 27	321	Leominster .. ..	0	88. 44	359	St. John .. ..	0	96. 33
2. 25	322	Sonning .. ..	0	84. 23	360	Arnsberg .. ..	0	88. 55
2. 20	323	Aldersgate .. ..	0	84. 23	361	Lauds .. ..	0	80. 24
0. 24	324	Southwell .. ..	0	69. 28		Morning Hymn ..	0	80. 24
4. 23	325	Stroudwater .. ..	0	92. 27	362	Melcombe .. ..	0	72. 27
6. 44					363	Ratisbon .. ..	0	84. 34



## The Hymnal.

No.	TUNE.	Metronome Tempo.	Time in Seconds.	No.	TUNE.	Metronome Tempo.	Time in Seconds.	No.
364	Cleethorpes ..	96	.60	400	Loretto ..	88	.44	437
365	Day of Praise ..	88	.22	401	Sarum ..	76	.25	438
366	Angelus ..	96	.30	402	Showers of Bless- ing ..	52	.37	440
367	Canon ..	72	.27	403	Even Me ..	100	.43	441
368	Abends ..	100	.29	404	Bethany ..	88	.44	442
	Hursley ..	84	.34		What a Friend ..	72	.53	443
369	St. Columba ..	88	.22	405	Evening Prayer ..	63	.30	444
	Vespers ..	88	.22	406	Intercession (Tune) (Refrain) (Whole Time) ..	84	.46	445
370	Weber ..	69	.28			81	.23	
371	Wimbledon ..	100	.27	407	St. Ambrose ..	76	.25	446
372	Vincent ..	80	.48		Grey ..	72	.27	447
373	Nutfield ..	84	.46	408	Horton ..	80	.24	449
	Temple ..	84	.46		Consolator ..	80	.24	450
374	St. Anatolius (Dykes) ..	84	.37	409	St. Peter ..	84	.23	451
	St. Anatolius (Brown) ..	84	.34	411	Damascus ..	104	.28	452
375	Italian Chorale ..	72	.53		Angelus ..	96	.30	453
	Evening Prayer ..	63	.30	412	Pleyel ..	84	.23	454
376	St. Clement ..	88	.33	413	Roalyn ..	76	.25	455
	Radford ..	96	.30	414	Bonn ..	80	.42	456
377	Eventide ..	96	.40	415	Evan ..	72	.27	
	Swanton ..	92	.42	416	Queen's College ..	108	.31	457
378	Fleming ..	92	.39	417	Berlin ..	72	.20	458
379	Irene ..	76	.25	418	St. Alkmund ..	92	.31	
380	Toronto ..	96	.45		Ontario ..	104	.37	459
	Guide ..	112	.39	419	Communion ..	84	.34	460
381	Franconia ..	88	.22	421	Reynoldstone ..	72	.40	461
	Day of Praise ..	88	.22	422	Eucharist ..	66	.29	
382	Morning ..	84	.34		Wimbledon ..	88	.31	462
383	Day of Rest ..	92	.42	423	St. Agnes ..	92	.42	463
	Endsleigh ..	100	.38	424	Narenza ..	84	.23	464
384	Linton ..	120	.28	425	St. Frances ..	80	.24	465
385	Warrington ..	92	.31	426	Wells ..	92	.47	466
387	Darwall ..	96	.35	427	Almsgiving ..	92	.27	467
388	Eden ..	88	.22	428	Deerhurst ..	88	.44	468
389	Maidstone ..	92	.63	429	Gounod ..	72	.43	469
390	Moredun ..	92	.31	430	Eagley ..	92	.27	470
391	Angel Voices ..	96	.32	431	Hampton ..	104	.28	471
392	St. Michael ..	84	.23	432	Crediton ..	80	.24	472
393	Spohr ..	92	.27	433	Nativity ..	88	.21	473
395	Moravia ..	76	.25	434	Warrington ..	92	.31	474
396	St. Frances ..	80	.24	435	Stiastny ..	96	.30	475
397	Retreat ..	96	.30	436	Pentecost ..	100	.29	476
398	New Calabar ..	84	.23		St. Alban ..	92	.31	477
	Minster ..	96	.30					
399	Palgrave ..	72	.40					

# The Hymnal.

Time in Seconds.	No.	TUNE.	Metronome Tempo.	Time in Seconds.	No.	TUNE.	Metronome Tempo.	Time in Seconds.
0.44	437	Lenox . . . . .		96.37	477	Pleyel . . . . .		84.23
0.25	438	Moscow . . . . .		92.31	478	Benevento . . . . .		80.43
0.37	440	St. George's Wind- sor . . . . .		92.42	479	Jerusalem . . . . .		92.42
0.43	441	Dix . . . . .		96.30	480	The Homeward Journey . . . . .		92.42
0.44	442	Heidelberg . . . . .		88.22	481	Bethany . . . . .		88.44
0.53	443	Missionary Hymn . . . . .		92.42	482	Albano . . . . .		80.24
0.30	444	Zoan . . . . .		104.37	483	Ruth . . . . .		104.37
0.46	445	Morning Light . . . . .		100.38	484	Woodman . . . . .		76.25
0.23		Morlaix . . . . .		92.21	485	Gratitude . . . . .		69.56
0.69	446	Meiringen . . . . .		92.34	486	St. George's Wind- sor . . . . .		92.42
0.25	447	Autumn . . . . .		60.48	487	Harvest-Tide . . . . .		44.22
0.27	449	Austria . . . . .		80.48	488	Dresden . . . . .		100.58
0.24	450	Regent Square . . . . .		96.30	489	Houghton . . . . .		100.28
0.24	451	Dismissal . . . . .		80.36	490	St. Paul . . . . .		69.24
0.23	452	Trust . . . . .		84.32	491	Angels . . . . .		92.30
0.28	453	Happy Home . . . . .		96.40	492	Euroclydon, 1st movement ( <i>In- terlude not in- cluded</i> )		80.31
0.30	454	Harvest Home . . . . .		84.46		2nd movement . . . . .		58.12
0.23	455	Bringing in the Sheaves . . . . .		76.38	493	Pilot . . . . .		60.36
0.25	456	Beebe . . . . .		92.42	494	Light of Life . . . . .		84.34
0.42		Rescue . . . . .		63.46	495	Be at Rest . . . . .		80.24
0.27	457	Whosoever Heareth . . . . .		80.48	496	Mizpah . . . . .		100.38
0.31	458	Far, Far Away . . . . .		69.28	497	St. Aelred . . . . .		88.32
0.20		( <i>Refrain</i> ) . . . . .		76.25	498	Galilee . . . . .		76.37
0.31		( <i>Whole Time</i> ) . . . . .		53.53	499	Tiberias . . . . .		92.44
0.37	459	Wayland . . . . .		112.34	500	Melita . . . . .		80.36
0.34	460	Hebron . . . . .		92.31		St. Chrysostom ( <i>not including the re- frain, which should be slower</i> )		80.35
0.40	461	St. Cecilia . . . . .		88.22	501	God Be With You . . . . .		80.48
0.29	461	St. Cecilia . . . . .		88.22		( <i>pauses not included</i> )		80.48
0.31	461	St. Cecilia . . . . .		88.22	502	Petersham . . . . .		84.23
0.42	462	Broughton . . . . .		66.44	503	St. Flavian . . . . .		60.24
0.42	462	Holyrood . . . . .		88.22		Lyra . . . . .		92.30
0.23	463	Austria . . . . .		80.48	504	Hesperus . . . . .		72.27
0.24	464	Aurelia . . . . .		100.38		Melcombe . . . . .		92.34
0.47	465	Hull . . . . .		88.33	505	St. John . . . . .		100.38
0.27	466	Fulda . . . . .		84.23	506	Morning Light . . . . .		92.42
0.44	467	Agnes . . . . .		76.25	507	Russian Hymn . . . . .		69.37
0.43	468	St. Ann . . . . .		69.28	508	God Save the Queen . . . . .		
0.27	469	Stowe . . . . .		100.38				
0.28	470	Oriel . . . . .		84.34				
0.24	471	Morlaix . . . . .		96.20				
0.21	472	St. Alphege . . . . .		88.22				
0.31	473	Happy Home . . . . .		96.40				
0.30	474	St. Ann . . . . .		69.28				
0.29	475	St. Alkmund . . . . .		92.31				
0.31	476	St. Alban's . . . . .		108.53				

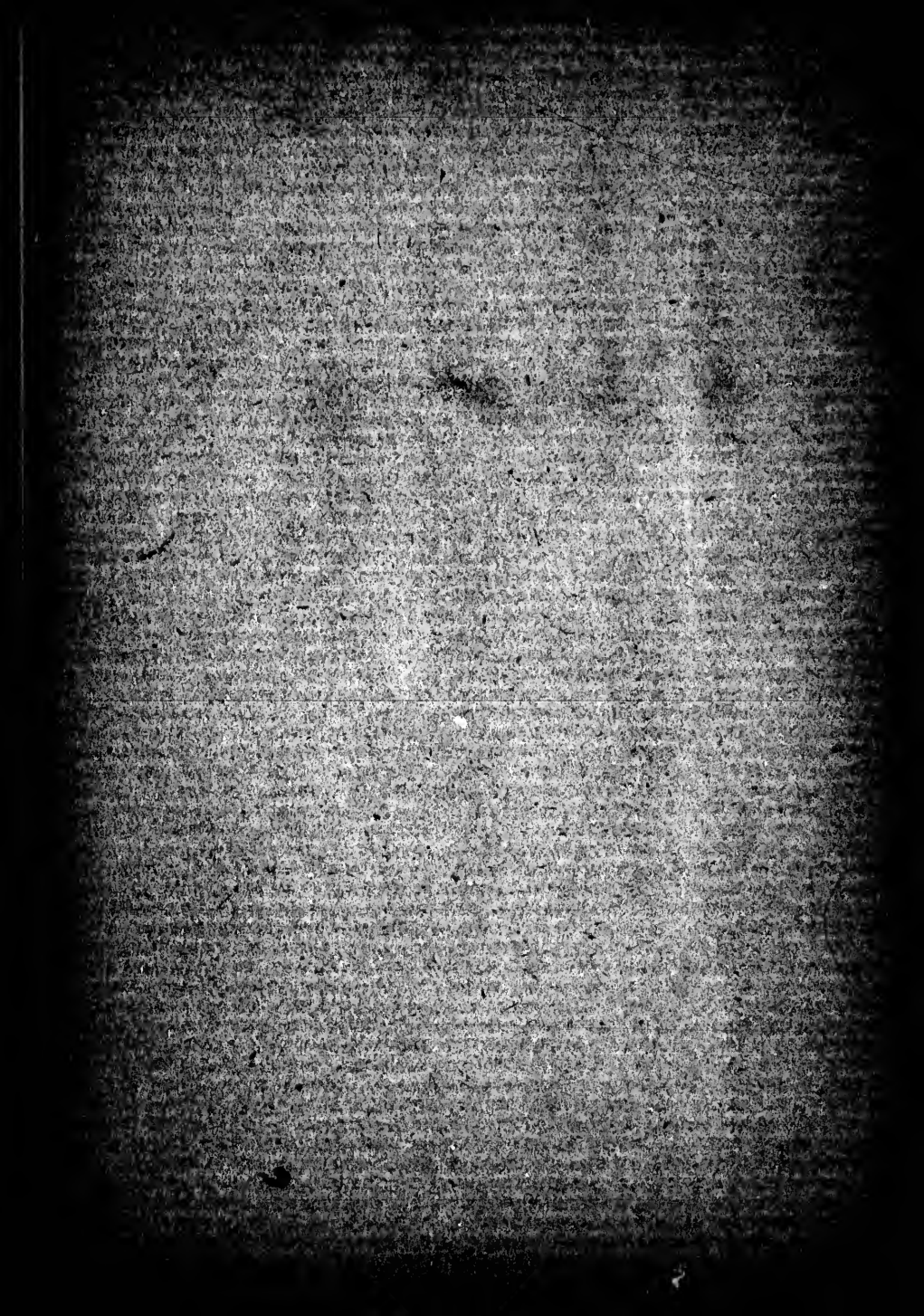
No.	TUNE.	Metronome Tempo.	Time in Seconds.	No.	TUNE.	Metronome Tempo.	Time in Seconds.
509	Beechwood ..	100	19	547	Who Hath Believed	66	38
510	Infant Praises ..	104	23	548	Gladness ( <i>with re- frain</i> )	56	34
511	Bemerton ..	100	19	549	We Praise Thee, O God ..	104	27
512	All Things Bright <i>(*If sung in strict time should occupy about one minute and fifty-five seconds for the whole hymn, but more time must be taken to allow for pauses and LARGO movements.)</i>	104	*	551	Enon ..	100	19
513	Battishill ..	92	21	552	Last Hope ..	88	32
514	Providence ..	104	36	553	If I Come to Jesus	126	31
515	Birds are Singing	132	44	554	Jesus Loves Me	120	32
516	Sterling ..	80	24	555	Evangel ..	100	58
517	Children's Voices	60	28	556	Ellon ..	104	35
518	Thanksgiving ..	104	46	557	I Love to Tell the Story ( <i>with re- frain</i> )	100	58
519	Irby ..	84	33	558	Capetown ..	92	22
521	Holy Cross ..	100	25	559	Words of Life ..	60	40
522	Pastor Bonus ..	112	34	560	Invitation .. ( <i>Refrain</i> )	80	24
523	Gentle Jesus ..	92	21	561	Salem ..	92	22
524	Dijon ..	63	23	562	Jesus Saves ..	88	32
525	Aspiration ..	96	20	563	Glad Day ..	88	22
526	Holyrood ..	88	22		Elsick ..	84	23
527	Federal Street ..	69	28	564	Missionary Song	138	42
528	Fulstow ..	104	19	565	Trust ..	80	24
529	Warfare ..	60	16	566	Epenetus ..	92	63
530	Yield not to Temp- tation ..	66	43	567	Salamis ..	66	58
531	Infant's Prayer ..	69	14	568	Heidelberg ..	92	22
532	Little Hands .. ( <i>last line to be slower</i> )	104	23	569	Denfield ..	66	22
533	Daniel ..	116	33	570	Evan ..	72	27
534	Follow Me ..	112	34	571	Bemerton ..	92	22
535	Ellon ..	112	34	572	Dijon ..	63	23
536	Madrid ..	104	37	573	Madrid ..	104	37
537	Hermas ..	108	26	574	Innocents ..	92	21
538	Adoration ..	76	28	575	Theodora ..	72	27
539	Ellacombe ..	100	38	576	Light of Life ..	88	32
540	Chenies ..	96	40	577	Samuel ..	72	43
541	Hora Novissima	56	50	578	Ferrier ..	88	22
542	Tenderness ..	92	42	579	Jesus, Saviour ..	46	20
543	Rousseau ..	80	48	580	Lebbaeus ..	88	22
544	Sympathy ..	54	36	581	Bemerton ..	100	19
545	Sweetest Name ..	72	39	582	Morlaix ..	92	20
546	O Come, let us sing	92	47	583	Whither, Pilgrims?	80	45
				584	Mariners ..	69	28
				585	Pleasant Pastures	76	51
				586	Dismissal ..	80	35

No. 587 C  
588 N  
589 Z  
590 E  
591 J  
592 J  
593 I  
594 C  
595 I  
596  
597  
598  
599  
600  
601  
602  
603  
604

# The Hymnal.

Time in Seconds.  
 .38  
 .34  
 .27  
 .19  
 .32  
 .31  
 .32  
 .58  
 .35  
 .58  
 .22  
 .40  
 .24  
 .21  
 .33  
 .32  
 .22  
 .23  
 .42  
 .24  
 .63  
 .58  
 .22  
 .22  
 .27  
 .22  
 .23  
 .37  
 .21  
 .27  
 .32  
 .43  
 .22  
 .22  
 .20  
 .22  
 .19  
 .20  
 .45  
 .28  
 .51  
 .35

No.	TUNE.	Metronome Tempo.	Time in Seconds.	No.	TUNE.	Metronome Tempo.	Time in Seconds.
587	City Bright		66..24	605	Benediction		80..35
588	Nain		92..21	607	St. Matthias		84..37
589	Zionward		96..40		Stella		92..47
590	Ellacombe		100..38	608	Ellers		92..42
591	Jewels		92..30	610	Milan		66..47
592	Joyful		60..28	612	Eaton		72..39
593	Happy Land		132..29	613	Dunfermline		69..28
594	O, So Bright		104..37	614	Triumph		88..32
595	Ephesus		66..42	615	Old Hundredth		60..32
596	Around the Throne		96..31	616	St. Magnus		72..27
597	Doxology		80..66	617	Jackson		60..32
598	Ely		72..27	618	St. John		96..33
599	Brandenburg		92..30	619	St. George's Wind-		
600	Tichfield		72..53		sor		92..42
601	Evening Prayer		63..30	620	Sanctus		60..72
602	The Lord Bless Thee (pauses not included)		60..36	621	Doxology (1st move- ment)		54..28
603	Gounod		72..43		(Hallelujah)		76..25
604	St. Joseph		80..35				



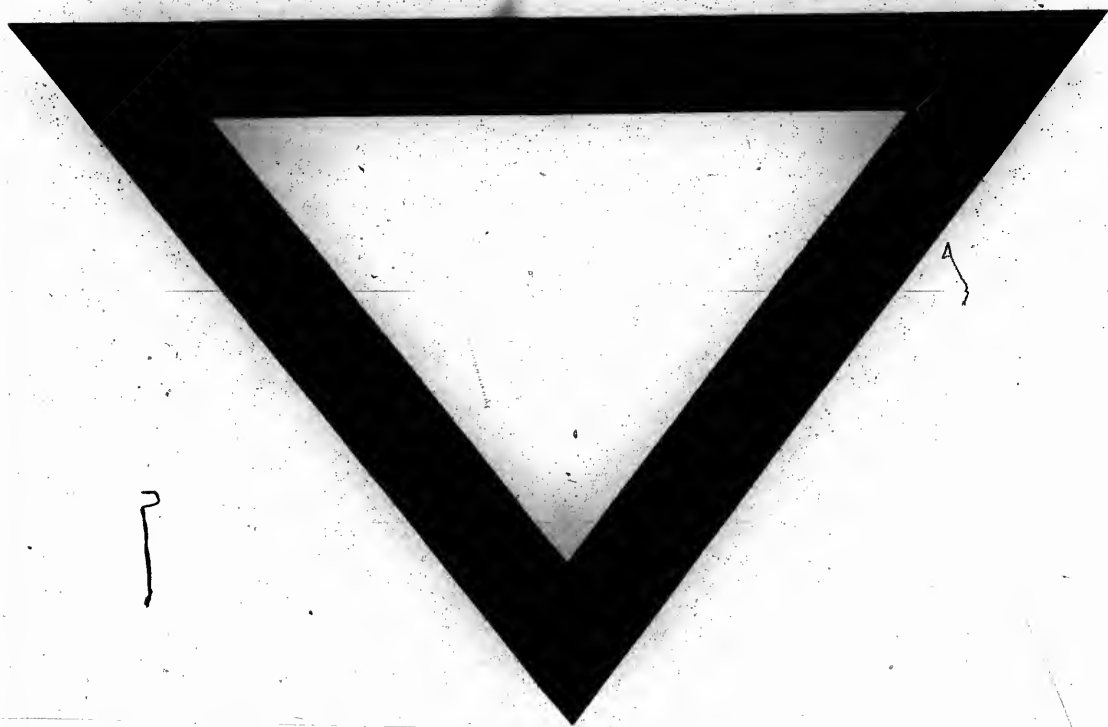
Dear Sir,

The question of the rate of speed at which the Psalms and Hymns in the Book of Praise ought to be sung has engaged the attention of the Music Committee as a matter of very great importance. In order that some approach toward uniformity throughout the Church be reached, the Committee have compiled the enclosed "Helps to the Use of the Presbyterian Book of Praise." They would beg your acceptance of a copy, and enclose two others for the acceptance of your Leader of Praise and Organist. Additional copies may be had on application. The scope and purpose of the "Helps" will be found explained in the Preface. Your cordial co-operation in this highly important matter is respectfully asked.

ALEXANDER McMILLAN,

Convener of Music Committee.

TORONTO, July 10th, 1899.



1

A

