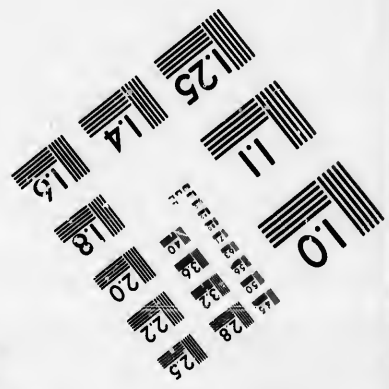
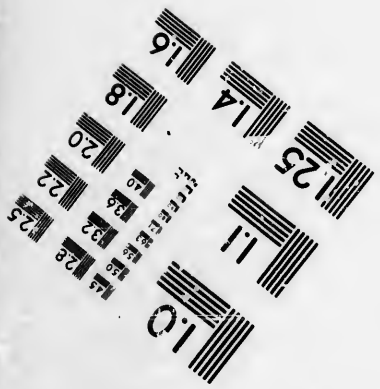
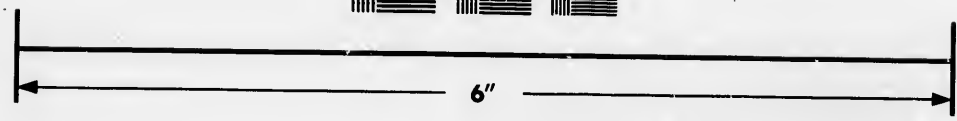
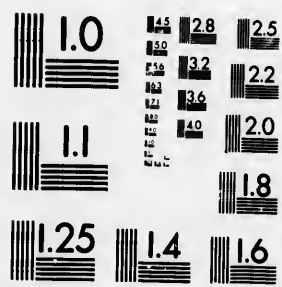


**IMAGE EVALUATION  
TEST TARGET (MT-3)**



**Photographic  
Sciences  
Corporation**

23 WEST MAIN STREET  
WEBSTER, N.Y. 14580  
(716) 872-4503

0  
16  
18  
20  
22  
25  
28  
32  
36

**CIHM/ICMH  
Microfiche  
Series.**

**CIHM/ICMH  
Collection de  
microfiches.**



Canadian Institute for Historical Microreproductions / Institut canadien de microreproductions historiques

01  
02  
03  
04

**© 1985**

Technical and Bibliographic Notes/Notes techniques et bibliographiques

The Institute has attempted to obtain the best original copy available for filming. Features of this copy which may be bibliographically unique, which may alter any of the images in the reproduction, or which may significantly change the usual method of filming, are checked below.

L'Institut a microfilmé le meilleur exemplaire qu'il lui a été possible de se procurer. Les détails de cet exemplaire qui sont peut-être uniques du point de vue bibliographique, qui peuvent modifier une image reproduite, ou qui peuvent exiger une modification dans la méthode normale de filmage sont indiqués ci-dessous.

- Coloured covers/  
Couverture de couleur
- Covers damaged/  
Couverture endommagée
- Covers restored and/or laminated/  
Couverture restaurée et/ou pelliculée
- Cover title missing/  
Le titre de couverture manque
- Coloured maps/  
Cartes géographiques en couleur
- Coloured ink (i.e. other than blue or black)/  
Encre de couleur (i.e. autre que bleue ou noire)
- Coloured plates and/or illustrations/  
Planches et/ou illustrations en couleur
- Bound with other material/  
Relié avec d'autres documents
- Tight binding may cause shadows or distortion  
along interior margin/  
La reliure serrée peut causer de l'ombre ou de la  
distorsion le long de la marge intérieure
- Blank leaves added during restoration may  
appear within the text. Whenever possible, these  
have been omitted from filming/  
Il se peut que certaines pages blanches ajoutées  
lors d'une restauration apparaissent dans le texte,  
mais, lorsque cela était possible, ces pages n'ont  
pas été filmées.
- Additional comments: / 1 sheet (verso blank)  
Commentaires supplémentaires:

- Coloured pages/  
Pages de couleur
- Pages damaged/  
Pages endommagées
- Pages restored and/or laminated/  
Pages restaurées et/ou pelliculées
- Pages discoloured, stained or foxed/  
Pages décolorées, tachetées ou piquées
- Pages detached/  
Pages détachées
- Showthrough/  
Transparence
- Quality of print varies/  
Qualité inégale de l'impression
- Includes supplementary material/  
Comprend du matériel supplémentaire
- Only edition available/  
Seule édition disponible
- Pages wholly or partially obscured by errata  
slips, tissues, etc., have been refilmed to  
ensure the best possible image/  
Les pages totalement ou partiellement  
obscurcies par un feuillet d'errata, une pelure,  
etc., ont été filmées à nouveau de façon à  
obtenir la meilleure image possible.

This item is filmed at the reduction ratio checked below/  
Ce document est filmé au taux de réduction indiqué ci-dessous.

10X	12X	14X	16X	18X	20X	22X	24X	26X	28X	30X	32X
							✓				

The copy filmed here has been reproduced thanks to the generosity of:

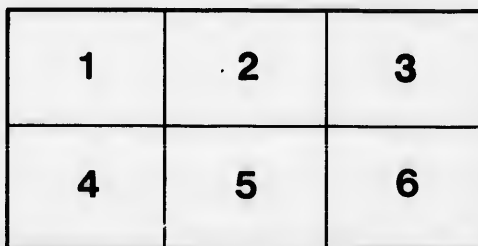
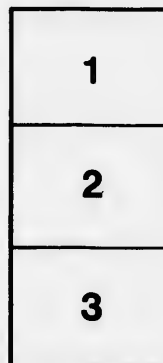
Library of the Public  
Archives of Canada

The images appearing here are the best quality possible considering the condition and legibility of the original copy and in keeping with the filming contract specifications.

Original copies in printed paper covers are filmed beginning with the front cover and ending on the last page with a printed or illustrated impression, or the back cover when appropriate. All other original copies are filmed beginning on the first page with a printed or illustrated impression, and ending on the last page with a printed or illustrated impression.

The last recorded frame on each microfiche shall contain the symbol  $\rightarrow$  (meaning "CONTINUED"), or the symbol  $\nabla$  (meaning "END"), whichever applies.

Maps, plates, charts, etc., may be filmed at different reduction ratios. Those too large to be entirely included in one exposure are filmed beginning in the upper left hand corner, left to right and top to bottom, as many frames as required. The following diagrams illustrate the method:



L'exemplaire filmé fut reproduit grâce à la générosité de:

La bibliothèque des Archives  
publiques du Canada

Les images suivantes ont été reproduites avec le plus grand soin, compte tenu de la condition et de la netteté de l'exemplaire filmé, et en conformité avec les conditions du contrat de filmage.

Les exemplaires originaux dont la couverture en papier est imprimée sont filmés en commençant par le premier plat et en terminant soit par la dernière page qui comporte une empreinte d'impression ou d'illustration, soit par le second plat, selon le cas. Tous les autres exemplaires originaux sont filmés en commençant par la première page qui comporte une empreinte d'impression ou d'illustration et en terminant par la dernière page qui comporte une telle empreinte.

Un des symboles suivants apparaîtra sur la dernière image de chaque microfiche, selon le cas: le symbole  $\rightarrow$  signifie "A SUIVRE", le symbole  $\nabla$  signifie "FIN".

Les cartes, planches, tableaux, etc., peuvent être filmés à des taux de réduction différents. Lorsque le document est trop grand pour être reproduit en un seul cliché, il est filmé à partir de l'angle supérieur gauche, de gauche à droite, et de haut en bas, en prenant le nombre d'images nécessaire. Les diagrammes suivants illustrent la méthode.

# AMERICAN SECURITIES.

LONDON, 27th May, 1883.

United States.			Redem- able.	Interest Payable.	Price.	United States.			Redem- able.	Interest Payable.	Price.
United States.....	Stock.	6 1/2 Ct.	1862	Jan. & July.		<b>RAILROAD BONDS—CONTINUED.</b>					
Ditto.....	"	"	1867-9	"	110	Madison & Indianapolis Convertible, 1854.	7 1/2 Ct.	1861	May & Nov.	100	
Ditto.....	Coupon Bonds.	"	1868	"	110 1/2 @ 113	Marletta & Cincinnati. Convertible, 1862.	7 "	1868	Jan. & July.	90 @ 2	
<b>STATE LOANS.</b>						Michigan Central....	Convertible.	8 "	1860	Apr. & Oct.	103 @ 5
Alabama.....	Bonds.	5 1/2 Ct.	1863	May & Nov.	81 @ 8	Ditto.....	Sterling.	6 "	1872	Jan. & July.	101 @ 3
Ditto.....	Sterling.	"	1858, &c.	Jan. & July.	85 @ 7	New York and Erie....	1st Mortgage.	7 "	1868	May & Nov.	100 1/2 @ 7 1/2
Illinois.....	Int. Imp. Stk.	6 "	1870	"	76 @ 9	Ditto.....	2nd ditto, Conv.	7 "	1859	Mar. & Sept.	98 @ 100
Ditto Deferred.....	"	6 "	1877	from July, 1857	53	Ditto.....	Convertible.	7 "	1862	Jan. & July.	92 @ 5
Indiana, State.....	"	5 "	1866	Jan. & July.	87 @ 9	New York & New Haven.....	"	7 "	1866	June & Dec.	99
Ditto.....	"	2 1/2 "	"	"	"	Ohio & Pennsylvania Income Bds. Con. 1862.	7 "	1872	Apr. & Oct.	94 @ 6	
Kentucky.....	Bonds.	6 "	1868	"	"	Ditto and Indiana....	Convertible, 1867.	7 "	1867	Feb. & Aug.	94
Maryland.....	"	6 "	1870	Jan., Apr., &c.	"	Pennsylvania Central. (1st Mort.) Con. 1860.	6 "	1860	Jan. & July.	99 @ 100	
Ditto.....	Sterling Bonds.	5 "	1869	Jan. & July.	96 1/2 @ 9	Philadelphia & Reading.....	"	6 "	1870	Apr. @ Oct.	85 @ 5
Massachusetts.....	Bonds.	5 "	1857	"	"	Wilmington & Man- chester.....	N. C., Conv. 1865.	7 "	1866	June & Dec.	93 x d
Ditto.....	Sterling Bonds.	5 "	1868	Apr. & Oct.	106 @ 8	Ditto and Raleigh....	N. C., Sterling.	6 "	1869	Apr. & Oct.	96
New York State.....	Stock.	5 "	1858-60	Jan., Apr., &c.	"	<b>Canada.</b>					
Ditto.....	"	6 "	1860-7	"	"	Canada Sterling Debentures.....	6 1/2 Ct.	1874	Feb. & Aug.	116 1/2 @ 17 1/2	
Ohio.....	"	5 "	1865	Jan. & July.	"	Ditto ditto.....	6 "	1876	Mar. & Sept.	116 @ 17	
Ditto.....	"	6 "	1870	"	"	Ditto ditto.....	6 "	1877	Jan. & July.	116 1/2 @ 17 1/2	
Pennsylvania.....	"	5 "	1868	Feb. & Aug.	86 @ 8	<b>LOANS OF CITIES.</b>					
Ditto.....	Bonds.	5 "	1868	Jan. & July.	93 @ 4	Montreal.....	Dollar Bonds.	6 1/2 Ct.	1857-65		86 @ 8
Ditto.....	"	4 1/2 "	1862	"	87 @ 9	Toronto.....	Sterling.	6 "	1872	Apr. & Oct.	102 @ 5
South Carolina.....	{ Stg. Bds., Palmer's. }	5 "	1866	"	96 @ 8	Quebec.....	"	6 "		May & Nov.	
Ditto.....	{ Baring's. }	5 "	1858-68	"	"	<b>RAILROAD BONDS.</b>					
Tennessee.....	Bonds.	6 "	1868	May & Nov.	96 @ 90	Brantford and Buffalo Stg. Convert., 1857.	6 1/2 Ct.	1872	Feb. & Aug.	90 @ 101	
Ditto.....	"	8 "	1860	Jan. & July.	"	Great Western.....	"	1855.	1857	Apr. & Oct.	108 @ 8
Ditto.....	"	6 "	1862	"	101	Ditto.....	"	1856.	1862	"	109 1/2 @ 11
Virginia.....	"	6 "	1866	"	99 @ 101	Ditto.....	Sterling.	6 "	1873	May & Nov.	102 1/2 @ 4
<b>LOANS OF CITIES.</b>						Hamilton & Toronto. Stg. Convert., 1860.	6 "	1873	Mar. & Sept.	106 1/2 @ 7	
Boston.....	Bonds.	5 1/2 Ct.	1858-62	Apr. & Oct.		Quebec and Richmond. " " 1857.	6 "	1872		105 1/2 @ 7	
Ditto.....	Sterling Bonds.	4 1/2 "	1872	"	101 @ 2	<b>RAILROAD SHARES.</b>					
New Orleans.....	Bonds.	6 "	1862	Jan. & July.	93 @ 4	Grand Trunk, with right of Bonds. Stg. £25 Sh., 5 pd. 6 1/2 Ct.				par @ 1/4 pm.	
New York.....	Stock.	5 "	1858-70	Feb., Aug., &c.		Great Western... Stg. £20 10/ Sh., 15 1/2 pd. 6 "			Mar. & Sept.	par @ 1/4 pm.	
Philadelphia.....	"	6 "	1876-81	Apr. & Oct.		Hamilton & Toronto " " 2 1/2 pd. 6 "				1 @ 2 pm.	
Ditto (Spring Gardens).	"	6 "	1865	"		Quebec & Richmond Stg. £10 5/ Sh., 5 1/2 pd. 6 "			Jan. & July.	1/2 dis. @ 1/4 pm.	
<b>RAILROAD BONDS.</b>						<b>EXCHANGE, 109 1/2 @ 1/4.</b>					
Bellefontaine & Indiana	Convertible.	7 1/2 Ct.	1866	Jan. & July.	nons.						
Camden and Amboy..	(1st Morig.) Stg.	5 "	1864	Feb. & Aug.	101						
Ditto.....	Sterling.	6 "	"	"	"						
Canandaigua and Niagara Falls..	{ Stg., Convertible.	6 "	1862	Apr. & Oct.	100 @ 2						
Chicago & Mississippi	"	7 "	1872	"	89 @ 90						
Cincinnati & St. Louis	Convertible, 1857.	"	1872	Jan. & July.	93 @ 4						
Covington & Lexington.	Convertible, 1857.	6 "	1872	Mar. & Sept.	90 1/2						
Eastern (Ex. 4/2 1/2)	Convertible	5 "	1862	Jan. & July.	95						
Illinois Central (Ex. 4/2 1/2) with right of 50 per Cent. Capital Stock.....	"	6 "	1875	Apr. & Oct.	108 @ 5						
Ditto, ex Stock.....	"	6 "	1875	"	"						
Ditto.....	Shares, 100 \$ each.	5 pd.	"	"	£4 @ 6 pm.						
Indianapolis and Bellefontaine..	Convertible.	7 1/2 Ct.	1860	Jan. & July.	100						

\* Free from the State Income Tax of 5 per Cent.

N. B. The Interest on the Sterling Bonds, and on those Bonds where the Exchange is fixed, is payable in London: the Interest on all the others is payable in America, at the Exchange of the day.

By order of the Committee of the Stock Exchange, the accruing Interest is added to the price in all transactions in Canadian Railroad Bonds.

This rule applies to no other securities quoted in this List.

FOSTER & BRAITHWAITE, BROKERS,  
68, OLD BROAD STREET.

