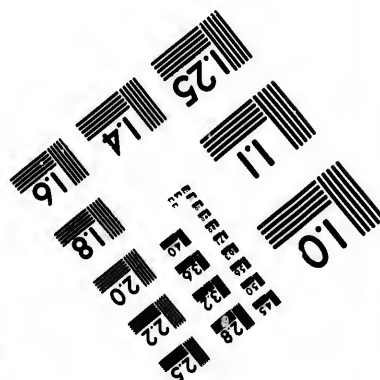
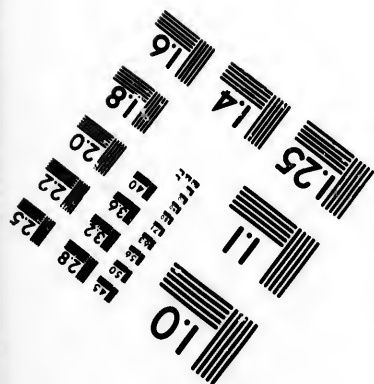
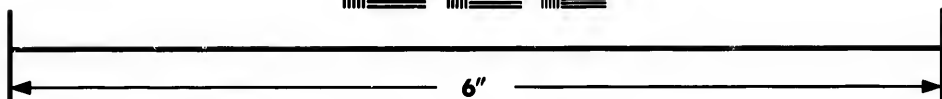
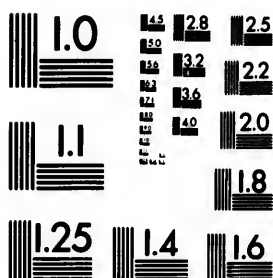


# IMAGE EVALUATION TEST TARGET (MT-3)



Photographic  
Sciences  
Corporation

23 WEST MAIN STREET  
WEBSTER, N.Y. 14580  
(716) 872-4503



© 1987

**The**  
**to th**

**The possibilities of the film**

**Original  
begin  
the l  
sion,  
othe  
first  
sion,  
or ill**

- ☐ Coloured pages/  
Pages de couleur
- ☐ Pages damaged/  
Pages endommagées
- ☐ Pages restored and/or laminated/  
Pages restaurées et/ou pelliculées
- ☒ Pages discoloured, stained or foxed/  
Pages décolorées, tachetées ou piquées
- ☐ Pages detached/  
Pages détachées
- ☒ Showthrough/  
Transparence
- ☒ Quality of print varies/  
Qualité inégale de l'impression
- ☐ Includes supplementary material/  
Comprend du matériel supplémentaire
- ☐ Only edition available/  
Seule édition disponible
- ☐ Pages wholly or partially obscured by errata  
slips, tissues, etc., have been refilmed to  
ensure the best possible image/  
Les pages totalement ou partiellement  
obscurcies par un feuillet d'errata, une pelure,  
etc., ont été filmées à nouveau de façon à  
obtenir la meilleure image possible.

**The  
shal  
TIN  
whic**

**Map  
diffe  
entia  
begi  
righ  
requ  
met**

A horizontal number line with 11 equal segments. Above the line, the labels 10X, 14X, 18X, 22X, 26X, and 30X are placed above the 1st, 3rd, 5th, 7th, 9th, and 11th segments respectively. Below the line, the labels 12X, 16X, 20X, 24X, 28X, and 32X are placed below the 2nd, 4th, 6th, 8th, 10th, and 11th segments respectively. A checkmark is drawn in the 2nd segment, between the 10X and 12X labels.

The copy filmed here has been reproduced thanks to the generosity of:

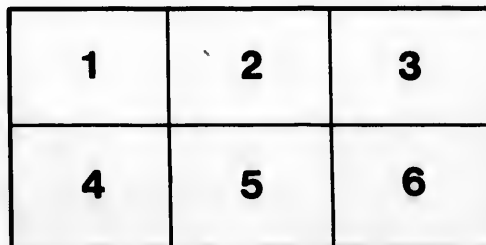
Metropolitan Toronto Library  
Canadian History Department

The images appearing here are the best quality possible considering the condition and legibility of the original copy and in keeping with the filming contract specifications.

Original copies in printed paper covers are filmed beginning with the front cover and ending on the last page with a printed or illustrated impression, or the back cover when appropriate. All other original copies are filmed beginning on the first page with a printed or illustrated impression, and ending on the last page with a printed or illustrated impression.

The last recorded frame on each microfiche shall contain the symbol → (meaning "CONTINUED"), or the symbol ▼ (meaning "END"), whichever applies.

Maps, plates, charts, etc., may be filmed at different reduction ratios. Those too large to be entirely included in one exposure are filmed beginning in the upper left hand corner, left to right and top to bottom, as many frames as required. The following diagrams illustrate the method:



L'exemplaire filmé fut reproduit grâce à la générosité de:

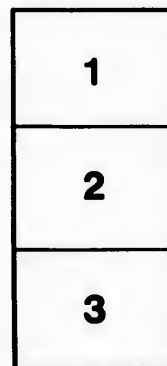
Metropolitan Toronto Library  
Canadian History Department

Les images suivantes ont été reproduites avec le plus grand soin, compte tenu de la condition et de la netteté de l'exemplaire filmé, et en conformité avec les conditions du contrat de filmage.

Les exemplaires originaux dont la couverture en papier est imprimée sont filmés en commençant par le premier plat et en terminant soit par la dernière page qui comporte une empreinte d'impression ou d'illustration, soit par le second plat, selon le cas. Tous les autres exemplaires originaux sont filmés en commençant par la première page qui comporte une empreinte d'impression ou d'illustration et en terminant par la dernière page qui comporte une telle empreinte.

Un des symboles suivants apparaîtra sur la dernière image de chaque microfiche, selon le cas: le symbole → signifie "A SUIVRE", le symbole ▼ signifie "FIN".

Les cartes, planches, tableaux, etc., peuvent être filmés à des taux de réduction différents. Lorsque le document est trop grand pour être reproduit en un seul cliché, il est filmé à partir de l'angle supérieur gauche, de gauche à droite, et de haut en bas, en prenant le nombre d'images nécessaire. Les diagrammes suivants illustrent la méthode.



## SPECIAL NOTICE.

# ANDRUS BROS.,

Manufacturers of

## ORGANS AND MELODEONS,

and Importers of the  
**BEST AMERICAN PIANOS.**

**ALL NEW STYLES, WITH LATEST IMPROVEMENTS.**

Persons intending to buy will consult their own interests, and save money, by calling on us and examining for themselves, when they will be convinced that our Instruments are the

**BEST AND CHEAPEST IN THE DOMINION.**

**SPECIAL REDUCTION FOR CASH.**

A liberal Discount to Clergymen, Churches and Schools.—No charge for Boxing and Shipping.

**Correspondence Solicited.**

Second-hand Instruments for sale cheap, and to rent.

## ANDRUS BROS.,

135 Dundas Street, London, Ont.

# PIANOS! PI

A LARGE VARIETY OF STYLES

THE BEST IN THE MARKET FOR



We shall continue, as usual, to keep on hand an assortment of

## BEST AMERICAN

Among these will be found

## EMERSON PIANOS

of Boston, Mass., for which we

**SOLE AGENCY FOR**

These Pianos, although such a short time in the part of Ontario, have become

**Great Favorites with the Public**  
and are eagerly sought after by intending buyers.

With an experience of twenty-four years in the manufacture of Pianos, the Emerson Pianoforte Company, with the FACT that their Pianos are

**AS GOOD AS ANY NOW**  
and for less money—buyers of them not only get a  
“dearly-bought reputation”

Illustrated Catalogues supplied FREE of charge.

## ANDRUS BROS.

135 Dundas Street,

# OS! PIANOS!

ETY OF STYLES AND PRICES.

THE MARKET FOR THE MONEY.



ue, as usual, to Import and keep on  
and an assortment of the

## AMERICAN PIANOS.

ng these will be found the

### SON PIANOS,

Mass., for which we have the

### ENCY FOR ONTARIO.

though such a short time known in this  
of Ontario, have become

s with the Public Generally,  
sought after by intending purchasers.

ce of twenty-four years in the manufac-  
merson Pianoforte Company feel gratified  
their Pianos are

AS ANY NOW MADE,

buyers of them not having to pay for a  
early-bought reputation."

ues supplied FREE on application.

## DRUS BROS.,

Dundas Street, London, Ont.

1873.

EVERY INSTRUMENT WARRANTED 5 YEARS

REVISED PRICE LIST  
OF

# ANDRUS BROS.



H. SEECH LONDON

## IMPROVED ORGANS AND MELODEONS.

OFFICE AND WAREROOMS:

135 DUNDAS STREET.

Manufactory, King-st.

LONDON, ONT.

ADVERTISER STEAM PRESSES.



## TO THE PUBLIC.

In presenting our Revised Price List, we take pleasure in announcing the introduction of entirely **NEW AND UNIQUE STYLES OF ORGAN CASES** from this date; also several improvements in the construction of the Action, which add materially to the cost, and for which we have made no advance in prices.

All our instruments are equally well made; all have **Pedals** of the same quality, appropriately voiced and accurately tuned; all have perfect mechanical appliances; and, in substantial excellence, the **cheapest** styles are, to the extent of their capacity, equal to the more costly ones.

We question the propriety of introducing **NEW, FANCY and UNKNOWN** names for stops, simply for the purpose of deceiving the uninitiated, as seems to be a growing evil with many of our competitors in the manufacture of Organs. We shall, therefore, adhere to the well-known and **REAL** names that are familiar to musicians generally, and which are only used for similar stops in the Pipe Organ.

Every **DEALER** knows that our instruments cost more to manufacture, and will sell readily for more than those of most other makers. Careful attention is paid to the smallest details in the construction of our instruments, and the very best materials used throughout. Everything that skill, taste and long experience can suggest, is employed to make them, both musically and externally, **THE BEST IN THE MARKET**. It is our aim to manufacture instruments combining more valuable improvements, better style and finish, and **MORE FOR YOUR MONEY**, than any now made. We challenge the most thorough scrutiny, and are willing to subject our instruments to any test or **COMPARISON** with those of any other manufacture.

## Cabinet Organ

### NEW STYLES IN RESONANCE

#### Style "A." (Two Stops.)

Two full five Octave Sets of Panelled Walnut Case, with Knee Swell and Two Stops: Viola and Diapason.

#### Style "B." (Four Stops.)

Two full five Octave Sets of Panelled, Ornamented, Walnut Case, with Knee Swell and Four Stops: Viola, Diapason, Melodia and Celeste.

#### Style "C." (Five Stops.)

Two full five Octave Sets of Resonance Case, in solid Panelled, Ornamented, Walnut Case, with Knee Swell and Five Stops: Viola, Diapason, Melodia, Flute and Celeste.

#### Style "D." (Six Stops.)

Two full five Octave Sets of Resonance Case, in solid Panelled, Ornamented, Walnut Case, with Knee Swell, and Six Stops: Viola, Diapason, Melodia, Flute, Celeste and Tremolo.

#### Style "E." (Seven Stops.)

Two full five Octave Sets of Resonance Case, including Celeste and Sub-Bass, in solid Panelled, handsomely Ornamented, Walnut Case, with Knee Swell, and Seven Stops: Viola, Diapason, Melodia, Flute, Celeste, Tremolo and Sub-Bass.

# net Organs.

ES IN RESONANT CASES.

**(Two Stops.) Price, \$120.**

Two full five Octave Sets of Reeds, in solid Panelled Case, with Knee Swell and Two Diapason.

**(Four Stops.) Price, \$135.**

Two full five Octave Sets of Reeds, in solid Panelled Case, with Knee Swell and Two Diapason, Viola, Diapason, Melodia and Flute.

**(Five Stops.) Price, \$150.**

Two full five Octave Sets of Reeds, and one Half-Panelled, Ornamented Walnut Case, with Knee Swell and Five Stops: Viola, Diapason, Melodia and Celeste.

**(Six Stops.) Price, \$165.**

Two full five Octave Sets of Reeds, and one Half-Panelled, Ornamented Walnut Case, with Knee Swell and Six Stops: Viola, Diapason, Melodia, Celeste and Tremolo.

**(Seven Stops.) Price, \$180.**

Two full five Octave Sets of Reeds, and Two Parts of Sets, including Celeste and Sub-Bass; in solid Panelled, richly Ornamented Walnut Case; with Knee Swell, and Eight Stops; their names being: Viola, Diapason, Flute, Melodia, Celeste, Tremolo, Sub-Bass and Principal Forte.

**Style "F." (Eight Stops.) Price, \$200.**

Two full five Octave Sets of Reeds, and Two Parts of Sets, including Celeste and Sub-Bass; in solid Panelled, richly Ornamented Walnut Case; with Knee Swell, and Eight Stops, the names of which are: Viola, Diapason, Flute, Melodia, Celeste, Tremolo, Sub-Bass and Principal Forte.

**Style "G." (Ten Stops.) Price, \$225.**

Two full five Octave Sets of Reeds, and Two Parts of Sets, including Celeste and Sub-Bass; in solid Panelled, richly Ornamented Walnut Case; with Knee Swell, and Ten Stops; their names being: Viola, Diapason, Flute, Melodia, Celeste, Tremolo, Sub-Bass, Principal Forte, Diapason Forte and Octave Coupler.

## Melodeons.

As Organs are fast superseding Melodeons in public favor, we have thought it best not to particularize on the different Styles and Prices of our Melodeons in this List. We shall, however, continue to make a limited number of Melodeons, and also keep an assortment of them in stock; therefore, we will be prepared, as usual, to supply any of our customers who may want them, with Melodeons, both Single and Double Reed. As we have heretofore made such a large variety of this class of instruments, and intend turning our attention mainly to the manufacture of Organs in the future, we do not expect to ALWAYS have every kind on hand that may be required by intending purchasers; but, with our increased facilities for manufacturing, we can, in a very short time, make any particular kind of either Melodeons or Organs (if not in stock) that we may receive orders for from our numerous friends and patrons.



