

The Provincial Wesleyan

Published under the direction of the Wesleyan Methodist Conference of Eastern British America.

Volume XVII. No. 5.

HALIFAX, N. S., WEDNESDAY, FEBRUARY 1, 1865.

17 Whole No. 811

Religious Miscellany.

The Cruse that Faleth not.

Is thy cruse of comfort wasting? rise and share it with another.
And through all the years of famine it shall serve thee and thy brother.
Love Divine will fill thy storehouse, or thy hand full will renew.
Scanty fare for one will often make a royal feast for two.
For the heart grows rich in giving; all its wealth is in its use.
Seeds which moulder in the garner, sown, will with gold the plan.
Is thy burden hard and heavy? do thy steps drag heavily?
Help to bear thy brother's burden; God will bear both and thee.
Numb and weary on the mountain, wouldst thou see the smile of the sun?
Clasp that frozen form beside thee, and together both shall glow.
Is the heart a well left empty? none but God its void can fill.
Nothing but ceaseless Fountain can its ceaseless longings still.
Is the heart a living power; self-twined its strength sinks low?
It can only live in loving, and by serving, love will grow.
—Author of *Schoenberg-Cotta Family*.

What is the use of Baptism?

Roddy as the question is framed, it shall be accepted as sincere. The inquirer has heard tell of some sign, or seal; of something outward and visible, answering to some inward and spiritual grace; but he sees that few indeed of the baptized mystics around him exhibit any outward evidence whatever of inward grace. "The laver of regeneration," he thinks, has produced no good effect. "What then," he insists, "can be the use of Baptism?"
Let us go to the baptismal font; and, as we confess our original sinfulness, and declare the corruption inherited from us by our children, but humbly obey the command of their Saviour and our will, there let us repeat the question, "If I have any sin, let it be forgiven me."
If he will be guided to answer the question, "What is the use of Baptism?"
Bodily as the question is framed, it shall be accepted as sincere. The inquirer has heard tell of some sign, or seal; of something outward and visible, answering to some inward and spiritual grace; but he sees that few indeed of the baptized mystics around him exhibit any outward evidence whatever of inward grace. "The laver of regeneration," he thinks, has produced no good effect. "What then," he insists, "can be the use of Baptism?"
Let us go to the baptismal font; and, as we confess our original sinfulness, and declare the corruption inherited from us by our children, but humbly obey the command of their Saviour and our will, there let us repeat the question, "If I have any sin, let it be forgiven me."
If he will be guided to answer the question, "What is the use of Baptism?"

Recognition in Heaven.

The Rev. H. W. Beecher gives in the N. Y. *Register*, a reply to a letter from a mother bereaved of all her children, and cherishing the hope of meeting them in Heaven. The following is an extract:—
"Our Saviour, in discoursing on that subject with parents and their children around about him, never let drop any single word that can by any possibility be taken into such a statement as we shall know our children, or each other, in the other life. On the other hand, it is assumed, all the way through, in his instructions and particularly those of the apostles, that we shall know each other beyond this world; where, for instance, God himself releases the names of the patriarchs—of Abraham, and Isaac, and Jacob; where, when he was referring himself to Moses and Elias appeared so manifestly that the disciples knew it to be them; where there is the enumeration of the various Hebrew words that had been prominent in the Jewish nation down to that time; and where the apostles say, 'We are surrounded by the clouds of witnesses,' all of them being named; and where it is said that a person at lying down into an undistinguishable form, without name or personality, how should there be such an inference as is found there, appealing to the strongest feeling of the Jewish mind—the nationality? We find abundant intimations in the New Testament that heaven is not filled with nameless and insipid spirits, and that men carry with them into the life the individualities which belong to them upon earth."
"We look at it in another way. What is the training of the mortal life for, if it is to be obliterated at death? What does the coming of Christ into the world amount to, if there is to be such a change at death that men will not know each other when they meet above? If we carry out of this life with us the characteristics which we form here, what is the nature and drift of all this superfluous system of education through which we are passing?"
"There can be no doubt that there will be great changes at death. When we drop the body, matter is done with. After that, we are pure spirits. We are scarcely outside of the sphere of such a state as that which awaits us. We understand it better by negatives than by positives. 'Flesh and blood cannot inherit the Kingdom of God.' As to what a spiritual body is, we can form no distinct conception whatever. We shall doubtless leave behind us many of those passions whose functions seem to be the life of our physical life. We shall doubtless leave behind us many of those feelings and social and commercial inclinations into the

Who is there none to doubt that if you bear such

and heavenly fruit, you are one with him who, communicating the influences of the Spirit to his people, as the tree does its sap to the boughs, hath said, 'I am the Vine ye are the branches. Abide in me, and I in you.'—Spoken to the heart."
The process through which Peter passed in the high-priest's garden is a genuine revelation. Conversion is a turning to God. It is attended by repentance of sin, abandonment of sin, and faith in Jesus Christ. Now, as conversion is made up of penitence, faith, and obedience to God, so Peter's recovery was a strict logical sense a re-conversion. It was a turning back to Christ.
Who the readers of this brief article may be since they were enrolled on a church record, I do not know; but I venture to say that it will be read by tens of thousands who sadly need a re-conversion. In the nominal church of Christ are multitudes who were never converted. Their first duty is to seek Jesus, and at once. Another large class came into the church with a very shallow spiritual experience. "Having nothing of root," they have done nothing but wither since they were enrolled on a church record. I am not writing of either of those classes now, but of genuine converts who have abandoned backslidden. Where the church has not its hospital filled with these self-made invalids, or these spiritual cripples who have maintained themselves by false insinuations and by having bandaged themselves with excuses and hid away from the call "to arms?" Fully one-half of the nominal church are in this condition. The greatest class are the backsliders. They had once tasted of the love of Jesus; they had been plucked by him out of the jaws of hell; their betrayal of their Saviour is peculiarly flagrant.
Call their sin what you choose; it is a crime! Our Methodist brethren would say that they have "fallen from grace." A Calvinist would call it a "spiritual declension." But their wounded and indignant Lord says to them, "I know whence ye have fallen. Ye have left your first love. Repent, and do your first works." Backsliding brethren! your sin is the sin of Peter. You have a Master and a Saviour, and he will save you. I cannot think that they were ever converted. Another year should be your like Peter's rock. It should startle you from your guilty state of desertion. It should bring you to repentance. And not only to repentance, but to re-conversion! What thou dost, do quickly. We will not ring many New Year bells to wake your slumbering consciences. Perhaps the next bell may summon you to the bar of Judgment!

Religious Intelligence.

A Brief Survey of some Parts of the Mission Field occupied by the Methodist Missions.

THE NORTH PACIFIC.—The London Society was the first to undertake Missions in the North Pacific. In 1792, the first Mission was established in the Sandwich Islands, and the Society has since that time been engaged in the most successful manner in the extension of the Christian faith in that region. The Society has now a number of Missions in the Sandwich Islands, the Society of the Friendly Islands, the Society of the Phoenix Islands, and the Society of the Tonga Islands. The Society has also a number of Missions in the North Pacific, and is engaged in the most successful manner in the extension of the Christian faith in that region.

THE SOUTH PACIFIC.

THE SOUTH PACIFIC.—The London Society was the first to undertake Missions in the South Pacific. In 1792, the first Mission was established in the Sandwich Islands, and the Society has since that time been engaged in the most successful manner in the extension of the Christian faith in that region. The Society has now a number of Missions in the Sandwich Islands, the Society of the Friendly Islands, the Society of the Phoenix Islands, and the Society of the Tonga Islands. The Society has also a number of Missions in the South Pacific, and is engaged in the most successful manner in the extension of the Christian faith in that region.

THE WEST INDIES.

THE WEST INDIES.—The London Society was the first to undertake Missions in the West Indies. In 1792, the first Mission was established in the Sandwich Islands, and the Society has since that time been engaged in the most successful manner in the extension of the Christian faith in that region. The Society has now a number of Missions in the Sandwich Islands, the Society of the Friendly Islands, the Society of the Phoenix Islands, and the Society of the Tonga Islands. The Society has also a number of Missions in the West Indies, and is engaged in the most successful manner in the extension of the Christian faith in that region.

THE NORTH PACIFIC.

THE NORTH PACIFIC.—The London Society was the first to undertake Missions in the North Pacific. In 1792, the first Mission was established in the Sandwich Islands, and the Society has since that time been engaged in the most successful manner in the extension of the Christian faith in that region. The Society has now a number of Missions in the Sandwich Islands, the Society of the Friendly Islands, the Society of the Phoenix Islands, and the Society of the Tonga Islands. The Society has also a number of Missions in the North Pacific, and is engaged in the most successful manner in the extension of the Christian faith in that region.

THE SOUTH PACIFIC.

THE SOUTH PACIFIC.—The London Society was the first to undertake Missions in the South Pacific. In 1792, the first Mission was established in the Sandwich Islands, and the Society has since that time been engaged in the most successful manner in the extension of the Christian faith in that region. The Society has now a number of Missions in the Sandwich Islands, the Society of the Friendly Islands, the Society of the Phoenix Islands, and the Society of the Tonga Islands. The Society has also a number of Missions in the South Pacific, and is engaged in the most successful manner in the extension of the Christian faith in that region.

THE WEST INDIES.

THE WEST INDIES.—The London Society was the first to undertake Missions in the West Indies. In 1792, the first Mission was established in the Sandwich Islands, and the Society has since that time been engaged in the most successful manner in the extension of the Christian faith in that region. The Society has now a number of Missions in the Sandwich Islands, the Society of the Friendly Islands, the Society of the Phoenix Islands, and the Society of the Tonga Islands. The Society has also a number of Missions in the West Indies, and is engaged in the most successful manner in the extension of the Christian faith in that region.

THE NORTH PACIFIC.

THE NORTH PACIFIC.—The London Society was the first to undertake Missions in the North Pacific. In 1792, the first Mission was established in the Sandwich Islands, and the Society has since that time been engaged in the most successful manner in the extension of the Christian faith in that region. The Society has now a number of Missions in the Sandwich Islands, the Society of the Friendly Islands, the Society of the Phoenix Islands, and the Society of the Tonga Islands. The Society has also a number of Missions in the North Pacific, and is engaged in the most successful manner in the extension of the Christian faith in that region.

THE SOUTH PACIFIC.

THE SOUTH PACIFIC.—The London Society was the first to undertake Missions in the South Pacific. In 1792, the first Mission was established in the Sandwich Islands, and the Society has since that time been engaged in the most successful manner in the extension of the Christian faith in that region. The Society has now a number of Missions in the Sandwich Islands, the Society of the Friendly Islands, the Society of the Phoenix Islands, and the Society of the Tonga Islands. The Society has also a number of Missions in the South Pacific, and is engaged in the most successful manner in the extension of the Christian faith in that region.

THE WEST INDIES.

THE WEST INDIES.—The London Society was the first to undertake Missions in the West Indies. In 1792, the first Mission was established in the Sandwich Islands, and the Society has since that time been engaged in the most successful manner in the extension of the Christian faith in that region. The Society has now a number of Missions in the Sandwich Islands, the Society of the Friendly Islands, the Society of the Phoenix Islands, and the Society of the Tonga Islands. The Society has also a number of Missions in the West Indies, and is engaged in the most successful manner in the extension of the Christian faith in that region.

THE NORTH PACIFIC.

THE NORTH PACIFIC.—The London Society was the first to undertake Missions in the North Pacific. In 1792, the first Mission was established in the Sandwich Islands, and the Society has since that time been engaged in the most successful manner in the extension of the Christian faith in that region. The Society has now a number of Missions in the Sandwich Islands, the Society of the Friendly Islands, the Society of the Phoenix Islands, and the Society of the Tonga Islands. The Society has also a number of Missions in the North Pacific, and is engaged in the most successful manner in the extension of the Christian faith in that region.

THE SOUTH PACIFIC.

THE SOUTH PACIFIC.—The London Society was the first to undertake Missions in the South Pacific. In 1792, the first Mission was established in the Sandwich Islands, and the Society has since that time been engaged in the most successful manner in the extension of the Christian faith in that region. The Society has now a number of Missions in the Sandwich Islands, the Society of the Friendly Islands, the Society of the Phoenix Islands, and the Society of the Tonga Islands. The Society has also a number of Missions in the South Pacific, and is engaged in the most successful manner in the extension of the Christian faith in that region.

THE WEST INDIES.

THE WEST INDIES.—The London Society was the first to undertake Missions in the West Indies. In 1792, the first Mission was established in the Sandwich Islands, and the Society has since that time been engaged in the most successful manner in the extension of the Christian faith in that region. The Society has now a number of Missions in the Sandwich Islands, the Society of the Friendly Islands, the Society of the Phoenix Islands, and the Society of the Tonga Islands. The Society has also a number of Missions in the West Indies, and is engaged in the most successful manner in the extension of the Christian faith in that region.

THE NORTH PACIFIC.

THE NORTH PACIFIC.—The London Society was the first to undertake Missions in the North Pacific. In 1792, the first Mission was established in the Sandwich Islands, and the Society has since that time been engaged in the most successful manner in the extension of the Christian faith in that region. The Society has now a number of Missions in the Sandwich Islands, the Society of the Friendly Islands, the Society of the Phoenix Islands, and the Society of the Tonga Islands. The Society has also a number of Missions in the North Pacific, and is engaged in the most successful manner in the extension of the Christian faith in that region.

THE SOUTH PACIFIC.

THE SOUTH PACIFIC.—The London Society was the first to undertake Missions in the South Pacific. In 1792, the first Mission was established in the Sandwich Islands, and the Society has since that time been engaged in the most successful manner in the extension of the Christian faith in that region. The Society has now a number of Missions in the Sandwich Islands, the Society of the Friendly Islands, the Society of the Phoenix Islands, and the Society of the Tonga Islands. The Society has also a number of Missions in the South Pacific, and is engaged in the most successful manner in the extension of the Christian faith in that region.

THE WEST INDIES.

THE WEST INDIES.—The London Society was the first to undertake Missions in the West Indies. In 1792, the first Mission was established in the Sandwich Islands, and the Society has since that time been engaged in the most successful manner in the extension of the Christian faith in that region. The Society has now a number of Missions in the Sandwich Islands, the Society of the Friendly Islands, the Society of the Phoenix Islands, and the Society of the Tonga Islands. The Society has also a number of Missions in the West Indies, and is engaged in the most successful manner in the extension of the Christian faith in that region.

THE NORTH PACIFIC.

THE NORTH PACIFIC.—The London Society was the first to undertake Missions in the North Pacific. In 1792, the first Mission was established in the Sandwich Islands, and the Society has since that time been engaged in the most successful manner in the extension of the Christian faith in that region. The Society has now a number of Missions in the Sandwich Islands, the Society of the Friendly Islands, the Society of the Phoenix Islands, and the Society of the Tonga Islands. The Society has also a number of Missions in the North Pacific, and is engaged in the most successful manner in the extension of the Christian faith in that region.

THE SOUTH PACIFIC.

THE SOUTH PACIFIC.—The London Society was the first to undertake Missions in the South Pacific. In 1792, the first Mission was established in the Sandwich Islands, and the Society has since that time been engaged in the most successful manner in the extension of the Christian faith in that region. The Society has now a number of Missions in the Sandwich Islands, the Society of the Friendly Islands, the Society of the Phoenix Islands, and the Society of the Tonga Islands. The Society has also a number of Missions in the South Pacific, and is engaged in the most successful manner in the extension of the Christian faith in that region.

THE WEST INDIES.

THE WEST INDIES.—The London Society was the first to undertake Missions in the West Indies. In 1792, the first Mission was established in the Sandwich Islands, and the Society has since that time been engaged in the most successful manner in the extension of the Christian faith in that region. The Society has now a number of Missions in the Sandwich Islands, the Society of the Friendly Islands, the Society of the Phoenix Islands, and the Society of the Tonga Islands. The Society has also a number of Missions in the West Indies, and is engaged in the most successful manner in the extension of the Christian faith in that region.

THE NORTH PACIFIC.

THE NORTH PACIFIC.—The London Society was the first to undertake Missions in the North Pacific. In 1792, the first Mission was established in the Sandwich Islands, and the Society has since that time been engaged in the most successful manner in the extension of the Christian faith in that region. The Society has now a number of Missions in the Sandwich Islands, the Society of the Friendly Islands, the Society of the Phoenix Islands, and the Society of the Tonga Islands. The Society has also a number of Missions in the North Pacific, and is engaged in the most successful manner in the extension of the Christian faith in that region.

THE SOUTH PACIFIC.

THE SOUTH PACIFIC.—The London Society was the first to undertake Missions in the South Pacific. In 1792, the first Mission was established in the Sandwich Islands, and the Society has since that time been engaged in the most successful manner in the extension of the Christian faith in that region. The Society has now a number of Missions in the Sandwich Islands, the Society of the Friendly Islands, the Society of the Phoenix Islands, and the Society of the Tonga Islands. The Society has also a number of Missions in the South Pacific, and is engaged in the most successful manner in the extension of the Christian faith in that region.

THE WEST INDIES.

THE WEST INDIES.—The London Society was the first to undertake Missions in the West Indies. In 1792, the first Mission was established in the Sandwich Islands, and the Society has since that time been engaged in the most successful manner in the extension of the Christian faith in that region. The Society has now a number of Missions in the Sandwich Islands, the Society of the Friendly Islands, the Society of the Phoenix Islands, and the Society of the Tonga Islands. The Society has also a number of Missions in the West Indies, and is engaged in the most successful manner in the extension of the Christian faith in that region.

THE NORTH PACIFIC.

THE NORTH PACIFIC.—The London Society was the first to undertake Missions in the North Pacific. In 1792, the first Mission was established in the Sandwich Islands, and the Society has since that time been engaged in the most successful manner in the extension of the Christian faith in that region. The Society has now a number of Missions in the Sandwich Islands, the Society of the Friendly Islands, the Society of the Phoenix Islands, and the Society of the Tonga Islands. The Society has also a number of Missions in the North Pacific, and is engaged in the most successful manner in the extension of the Christian faith in that region.

THE SOUTH PACIFIC.

THE SOUTH PACIFIC.—The London Society was the first to undertake Missions in the South Pacific. In 1792, the first Mission was established in the Sandwich Islands, and the Society has since that time been engaged in the most successful manner in the extension of the Christian faith in that region. The Society has now a number of Missions in the Sandwich Islands, the Society of the Friendly Islands, the Society of the Phoenix Islands, and the Society of the Tonga Islands. The Society has also a number of Missions in the South Pacific, and is engaged in the most successful manner in the extension of the Christian faith in that region.

THE WEST INDIES.

THE WEST INDIES.—The London Society was the first to undertake Missions in the West Indies. In 1792, the first Mission was established in the Sandwich Islands, and the Society has since that time been engaged in the most successful manner in the extension of the Christian faith in that region. The Society has now a number of Missions in the Sandwich Islands, the Society of the Friendly Islands, the Society of the Phoenix Islands, and the Society of the Tonga Islands. The Society has also a number of Missions in the West Indies, and is engaged in the most successful manner in the extension of the Christian faith in that region.

THE NORTH PACIFIC.

THE NORTH PACIFIC.—The London Society was the first to undertake Missions in the North Pacific. In 1792, the first Mission was established in the Sandwich Islands, and the Society has since that time been engaged in the most successful manner in the extension of the Christian faith in that region. The Society has now a number of Missions in the Sandwich Islands, the Society of the Friendly Islands, the Society of the Phoenix Islands, and the Society of the Tonga Islands. The Society has also a number of Missions in the North Pacific, and is engaged in the most successful manner in the extension of the Christian faith in that region.

THE SOUTH PACIFIC.

THE SOUTH PACIFIC.—The London Society was the first to undertake Missions in the South Pacific. In 1792, the first Mission was established in the Sandwich Islands, and the Society has since that time been engaged in the most successful manner in the extension of the Christian faith in that region. The Society has now a number of Missions in the Sandwich Islands, the Society of the Friendly Islands, the Society of the Phoenix Islands, and the Society of the Tonga Islands. The Society has also a number of Missions in the South Pacific, and is engaged in the most successful manner in the extension of the Christian faith in that region.

THE WEST INDIES.

THE WEST INDIES.—The London Society was the first to undertake Missions in the West Indies. In 1792, the first Mission was established in the Sandwich Islands, and the Society has since that time been engaged in the most successful manner in the extension of the Christian faith in that region. The Society has now a number of Missions in the Sandwich Islands, the Society of the Friendly Islands, the Society of the Phoenix Islands, and the Society of the Tonga Islands. The Society has also a number of Missions in the West Indies, and is engaged in the most successful manner in the extension of the Christian faith in that region.

THE NORTH PACIFIC.

THE NORTH PACIFIC.—The London Society was the first to undertake Missions in the North Pacific. In 1792, the first Mission was established in the Sandwich Islands, and the Society has since that time been engaged in the most successful manner in the extension of the Christian faith in that region. The Society has now a number of Missions in the Sandwich Islands, the Society of the Friendly Islands, the Society of the Phoenix Islands, and the Society of the Tonga Islands. The Society has also a number of Missions in the North Pacific, and is engaged in the most successful manner in the extension of the Christian faith in that region.

THE SOUTH PACIFIC.

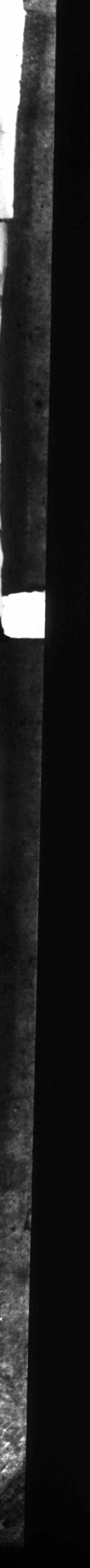
THE SOUTH PACIFIC.—The London Society was the first to undertake Missions in the South Pacific. In 1792, the first Mission was established in the Sandwich Islands, and the Society has since that time been engaged in the most successful manner in the extension of the Christian faith in that region. The Society has now a number of Missions in the Sandwich Islands, the Society of the Friendly Islands, the Society of the Phoenix Islands, and the Society of the Tonga Islands. The Society has also a number of Missions in the South Pacific, and is engaged in the most successful manner in the extension of the Christian faith in that region.

THE WEST INDIES.

THE WEST INDIES.—The London Society was the first to undertake Missions in the West Indies. In 1792, the first Mission was established in the Sandwich Islands, and the Society has since that time been engaged in the most successful manner in the extension of the Christian faith in that region. The Society has now a number of Missions in the Sandwich Islands, the Society of the Friendly Islands, the Society of the Phoenix Islands, and the Society of the Tonga Islands. The Society has also a number of Missions in the West Indies, and is engaged in the most successful manner in the extension of the Christian faith in that region.

THE NORTH PACIFIC.

THE NORTH PACIFIC.—The London Society was the first to undertake Missions in the North Pacific. In 1792, the first Mission was established in the Sandwich Islands, and the Society has since that time been engaged in the most successful manner in the extension of the Christian faith in that region. The Society has now a number of Missions in the Sandwich Islands, the Society of the Friendly Islands, the Society of the Phoenix Islands, and the Society of the Tonga Islands. The Society has also a number of Missions in the North Pacific, and is engaged in the most successful manner in the extension of the Christian faith in that region.



Provincial Wesleyan

WEDNESDAY, FEBRUARY 1, 1865.

The Methodist Class-Meeting.

The best friends of Methodism, deeply interested in her spiritual power, the very best and most earnest, are to be seen in the Class-Meeting...

THE WEST INDIES.

WEST INDIES.—Modern Missions found the West Indies occupied by a population chiefly pagan. Whether any remains of Obsham and idolatry still lurk in secret corners of Jamaica or the other islands, we do not know...

METHODIST FINANCE.

While we glorify the grace and mercy of God, as manifested in the conversion of the Heathen, we may also be allowed to rejoice in the spirit of liberality which has been given to the people of the British Empire...

General Aspect of the British Churches.

The Methodist Recorder in a review of the past year, concludes with the following:—The aspect of the religious world, so far at least as our own country is concerned, is less gloomy than that of the political.

State of English Methodism.

The year 1864 has dawned upon Wesleyan Methodism under auspices of the most favourable kind. Peace is in all our borders. Tranquillity reigns in every district, from humble Zetland to ardent Cornwall.

State of English Methodism.

The year 1864 has dawned upon Wesleyan Methodism under auspices of the most favourable kind. Peace is in all our borders. Tranquillity reigns in every district, from humble Zetland to ardent Cornwall.

Horton Circuit.

DEAR BROTHER.—Our union meetings for prayer and exhortation, held in Wulville and other parts of the Circuit during the first week of the year, were well attended, and proved to be seasons of grace and sweet enlightenings.

Mimaco Mission.

The sixteenth annual meeting of the Mimaco Missionary Society was held in Chalmers' Church, Thursday evening, 25th inst.

Pulpits.

Our reverence for pulpits is a short error; we are cold, indifferent, if not disgusted at most of them. The pulpit made of a vast amount of lumber, in all kinds of fantastic mouldings, with elaborate and laborious attempts at grandeur...

Church Music.

Every congregation must have some kind of leader for their singing. Those who are the worst of depend upon any person who may be present, having sufficient ability and knowledge, to start a tune of the right metre.

Missionary Anniversary, St. John, N. B.

We learn that the services of the Wesleyan Missionary Anniversary at St. John, N. B., held on Monday and Tuesday evenings, the 28th and 29th ult., were highly satisfactory.

qualifications were themselves almost sufficient. In the infancy of Methodism, the almost 8-bercy who were not realists at least.

do not desire to lose the power from the hands of the Master. The outward enlargement of the Church, the outward enlargement of the Church, the outward enlargement of the Church...

Let the promise of a shower be kept; and let the rain be sent down in blessing upon the seed which shall be sown in the hearts of men.

Mimaco Mission.

The sixteenth annual meeting of the Mimaco Missionary Society was held in Chalmers' Church, Thursday evening, 25th inst.

Pulpits.

Our reverence for pulpits is a short error; we are cold, indifferent, if not disgusted at most of them. The pulpit made of a vast amount of lumber, in all kinds of fantastic mouldings, with elaborate and laborious attempts at grandeur...

Church Music.

Every congregation must have some kind of leader for their singing. Those who are the worst of depend upon any person who may be present, having sufficient ability and knowledge, to start a tune of the right metre.

Missionary Anniversary, St. John, N. B.

We learn that the services of the Wesleyan Missionary Anniversary at St. John, N. B., held on Monday and Tuesday evenings, the 28th and 29th ult., were highly satisfactory.

on them. 4. Then should any persons be prompted to act as collectors, soliciting from those who would cheerfully give, there could be no objection.

Four objects were specified for which contributions are needed. 1. The salary of the Missionary. 2. For paying an Indian assistant in the business of translating and preparing the Scriptures and elementary books of instruction for the press.

A resolution making the Society to be composed of those members of evangelical churches who manifest an interest in the Mission, and who cause their names to be enrolled, was moved by Rev. J. McMurry, seconded by William Howe, Esq. and adopted.

Mimaco Mission.

The sixteenth annual meeting of the Mimaco Missionary Society was held in Chalmers' Church, Thursday evening, 25th inst.

Pulpits.

Our reverence for pulpits is a short error; we are cold, indifferent, if not disgusted at most of them. The pulpit made of a vast amount of lumber, in all kinds of fantastic mouldings, with elaborate and laborious attempts at grandeur...

Church Music.

Every congregation must have some kind of leader for their singing. Those who are the worst of depend upon any person who may be present, having sufficient ability and knowledge, to start a tune of the right metre.

Missionary Anniversary, St. John, N. B.

We learn that the services of the Wesleyan Missionary Anniversary at St. John, N. B., held on Monday and Tuesday evenings, the 28th and 29th ult., were highly satisfactory.

Choirs could be formed in all congregations. They will always be found in a few persons who have sufficient knowledge of the organ, and vocal ability to constitute the necessary nucleus.

Choirs could be formed in all congregations. They will always be found in a few persons who have sufficient knowledge of the organ, and vocal ability to constitute the necessary nucleus.

One objection made to a choir by conscientious people, is that the shuffling of books, and the turning over of leaves does not comport with the sanctity of God's house, or that of the holy Sabbath.

Mimaco Mission.

The sixteenth annual meeting of the Mimaco Missionary Society was held in Chalmers' Church, Thursday evening, 25th inst.

Pulpits.

Our reverence for pulpits is a short error; we are cold, indifferent, if not disgusted at most of them. The pulpit made of a vast amount of lumber, in all kinds of fantastic mouldings, with elaborate and laborious attempts at grandeur...

Church Music.

Every congregation must have some kind of leader for their singing. Those who are the worst of depend upon any person who may be present, having sufficient ability and knowledge, to start a tune of the right metre.

Missionary Anniversary, St. John, N. B.

We learn that the services of the Wesleyan Missionary Anniversary at St. John, N. B., held on Monday and Tuesday evenings, the 28th and 29th ult., were highly satisfactory.

Choirs could be formed in all congregations. They will always be found in a few persons who have sufficient knowledge of the organ, and vocal ability to constitute the necessary nucleus.

Choirs could be formed in all congregations. They will always be found in a few persons who have sufficient knowledge of the organ, and vocal ability to constitute the necessary nucleus.

One objection made to a choir by conscientious people, is that the shuffling of books, and the turning over of leaves does not comport with the sanctity of God's house, or that of the holy Sabbath.

Mimaco Mission.

The sixteenth annual meeting of the Mimaco Missionary Society was held in Chalmers' Church, Thursday evening, 25th inst.

Pulpits.

Our reverence for pulpits is a short error; we are cold, indifferent, if not disgusted at most of them. The pulpit made of a vast amount of lumber, in all kinds of fantastic mouldings, with elaborate and laborious attempts at grandeur...

Church Music.

Every congregation must have some kind of leader for their singing. Those who are the worst of depend upon any person who may be present, having sufficient ability and knowledge, to start a tune of the right metre.

Missionary Anniversary, St. John, N. B.

We learn that the services of the Wesleyan Missionary Anniversary at St. John, N. B., held on Monday and Tuesday evenings, the 28th and 29th ult., were highly satisfactory.

The Family

A Little Goose

The still November day was done, The working world home-facing...

Hands—Their Beauty. Beautiful hands! They have a magic of their own...

Counsel to the Young. Never be cast down by trifles. If a spider breaks his web twenty times he will mend it again...

A Jewel for the King's Crown. I had a day-dream concerning a great king preparing for his coronation...

I Wish I was in Heaven. "I wish I was in heaven," said Dorothy, resting her tired head upon her hand...

To Make Cattle Eat Straw. I take this method of informing the mazy farmers that have stood to feed that they try the way suggested below...

Preparation for Preserving Leather. We translate from the German a receipt for a preparation which is said to insure a great durability to leather...

Turner's American Express. DUNSMO to all parts of Nova Scotia, Prince Edward Island, and New Brunswick...

Atlas Parcel Express, of Liverpool. Is now prepared to forward all kinds of Packages to all parts of the world...

CHISWELL'S PECTORAL BALSAM. Has been in use through Nova Scotia for twenty years...

THE INDEPENDENT. This weekly Religious, Literary and Family Journal, edited by Rev. Henry Ward Beecher...

ONE SERMON EVERY WEEK. The following eminent writers are special contributors to this paper...

THE SCIENCE OF HEALTH. Every Man his own Physician. HOLLOWAY'S PILLS AND HOLLOWAY'S OINTMENT.

English Pharmacy. Attention is called to the following articles: Woodcock's Pink-eye Bitters...

LANGLEY'S PILLS. Are a purely vegetable preparation, and may be taken at any time by either sex...

LONDON DRUG & MEDICINE STORE. STOCKED with a full and complete assortment of Drugs, Medicines and Chemicals...

WINTER CLOAKING. At the "Globe House," 85 Granville Street. WINTER CLOAKING is at all the new materials...

Portrait of Eminent Wesleyan Ministers. RECEIVED per printer, and for sale at the Wesleyan Book Room...

A VALUABLE BIOGRAPHY. With Memoirs of the REV. JOSEPH W. WOODCOCK, D.D., by Rev. W. W. Woodcock...

CHEAP BLANKETS. LONDON HOUSE, HOLLES STREET. THREE DOLLARS PER PAIR.

LONDON HOUSE, HOLLES STREET. BARGAINS in Dresses, during Christmas week. Large assortment of Dresses...

T. T. T. T. T. A few words about good TEA are never out of season.

HALF DOLLAR TEA. which for the stout, strength and economy is just the quality to suit all classes...

THE INDEPENDENT. This weekly Religious, Literary and Family Journal, edited by Rev. Henry Ward Beecher...

ONE SERMON EVERY WEEK. The following eminent writers are special contributors to this paper...

THE SCIENCE OF HEALTH. Every Man his own Physician. HOLLOWAY'S PILLS AND HOLLOWAY'S OINTMENT.

English Pharmacy. Attention is called to the following articles: Woodcock's Pink-eye Bitters...

LANGLEY'S PILLS. Are a purely vegetable preparation, and may be taken at any time by either sex...

LONDON DRUG & MEDICINE STORE. STOCKED with a full and complete assortment of Drugs, Medicines and Chemicals...

WINTER CLOAKING. At the "Globe House," 85 Granville Street. WINTER CLOAKING is at all the new materials...

Portrait of Eminent Wesleyan Ministers. RECEIVED per printer, and for sale at the Wesleyan Book Room...

A VALUABLE BIOGRAPHY. With Memoirs of the REV. JOSEPH W. WOODCOCK, D.D., by Rev. W. W. Woodcock...

British Shoe Store. ARTUR J. RICKARDS. HAS received per steamer "Canada," 13 cases of Boots and Shoes...

LONDON HOUSE, HOLLES STREET. BARGAINS in Dresses, during Christmas week. Large assortment of Dresses...

T. T. T. T. T. A few words about good TEA are never out of season.

HALF DOLLAR TEA. which for the stout, strength and economy is just the quality to suit all classes...

THE INDEPENDENT. This weekly Religious, Literary and Family Journal, edited by Rev. Henry Ward Beecher...

ONE SERMON EVERY WEEK. The following eminent writers are special contributors to this paper...

THE SCIENCE OF HEALTH. Every Man his own Physician. HOLLOWAY'S PILLS AND HOLLOWAY'S OINTMENT.

English Pharmacy. Attention is called to the following articles: Woodcock's Pink-eye Bitters...

LANGLEY'S PILLS. Are a purely vegetable preparation, and may be taken at any time by either sex...

LONDON DRUG & MEDICINE STORE. STOCKED with a full and complete assortment of Drugs, Medicines and Chemicals...

WINTER CLOAKING. At the "Globe House," 85 Granville Street. WINTER CLOAKING is at all the new materials...

Portrait of Eminent Wesleyan Ministers. RECEIVED per printer, and for sale at the Wesleyan Book Room...

A VALUABLE BIOGRAPHY. With Memoirs of the REV. JOSEPH W. WOODCOCK, D.D., by Rev. W. W. Woodcock...

ROYAL MAIL COACHES. SHORE ROUTE. Between Halifax and Shelburne.

THE CRAIG MICROSCOPE. The most wonderful invention of the Age.

SEA WATER BATH. At a Trifling Cost.

Algodon & Towel's Celebrated SEA SALT.

CONSUMPTION. This Disease is not Incurable.

CITY DRUG STORE. 20 packages per "America."

ALWAYS IN STOCK. English Drugs, Medicines, Perfumes, Pomades, Hair, Tooth, Nail & Comb Brushes.

TO CONSUMPTIVES. CONSUMPTIVES will receive (free of charge) a valuable prescription for the cure of Consumption, Asthma, Bronchitis, and all Throat and Lung affections...

A HINT. To the worthy Citizens of Canada. BE WARNED IN TIME.

ENNIS & GARDNER. Would call attention to their Stock of FRENCH DELAINES, STILES QUITE NEW.

GRAMAN'S PAIN ERADICATOR. The best remedy in use for the following complaints: Rheumatism, Neuralgia, Headache, Toothache, etc.

PROVINCIAL WESLEYAN. CHURCH OF THE WESLEYAN METHODIST CHURCH OF E. B. AMERICA.

ADVERTISEMENTS. The large and increasing circulation of this paper renders it a most desirable advertising medium.

REMOVAL. The Proprietor of Graham's Pain Eradicator and Magnetic Oil has removed from Canaan, Cornwallis, N. S., to St. John, N. B., for greater facilities of supplying the largely increasing demand for his Medicines...