

**CIHM  
Microfiche  
Series  
(Monographs)**

**ICMH  
Collection de  
microfiches  
(monographies)**



**Canadian Institute for Historical Microreproductions / Institut canadien de microreproductions historiques**

**© 1996**

Technical and Bibliographic Notes / Notes techniques et bibliographiques

The Institute has attempted to obtain the best original copy available for filming. Features of this copy which may be bibliographically unique, which may alter any of the images in the reproduction, or which may significantly change the usual method of filming, are checked below.

L'Institut a microfilmé le meilleur exemplaire qu'il lui a été possible de se procurer. Les détails de cet exemplaire qui sont peut-être uniques du point de vue bibliographique, qui peuvent modifier une image reproduite, ou qui peuvent exiger une modification dans la méthode normale de filmage sont indiqués ci-dessous.

Coloured covers/  
Couverture de couleur

Covers damaged/  
Couverture endommagée

Covers restored and/or laminated/  
Couverture restaurée et/ou pelliculée

Cover title missing/  
Le titre de couverture manque

Coloured maps/  
Cartes géographiques en couleur

Coloured ink (i.e. other than blue or black)/  
Encre de couleur (i.e. autre que bleue ou noire)

Coloured plates and/or illustrations/  
Planches et/ou illustrations en couleur

Bound with other material/  
Relié avec d'autres documents

Tight binding may cause shadows or distortion  
along interior margin/  
La reliure serrée peut causer de l'ombre ou de la  
distorsion le long de la marge intérieure

Blank leaves added during restoration may appear  
within the text. Whenever possible, these have  
been omitted from filming/  
Il se peut que certaines pages blanches ajoutées  
lors d'une restauration apparaissent dans le texte,  
mais, lorsque cela était possible, ces pages n'ont  
pas été filmées.

Additional comments: /  
Commentaires supplémentaires:

Coloured pages/  
Pages de couleur

Pages damaged/  
Pages endommagées

Pages restored and/or laminated/  
Pages restaurées et/ou pelliculées

Pages discoloured, stained or foxed/  
Pages décolorées, tachetées ou piquées

Pages detached/  
Pages détachées

Showthrough/  
Transparence

Quality of print varies/  
Qualité inégale de l'impression

Continuous pagination/  
Pagination continue

Includes index(es)/  
Comprend un (des) index

Title on header taken from: /  
Le titre de l'en-tête provient:

Title page of issue/  
Page de titre de la livraison

Caption of issue/  
Titre de départ de la livraison

Masthead/  
Générique (périodiques) de la livraison

This item is filmed at the reduction ratio checked below/  
Ce document est filmé au taux de réduction indiqué ci-dessous.

10x	14x	18x	22x	26x	30x
<input type="checkbox"/>	<input type="checkbox"/>	<input type="checkbox"/>	<input checked="" type="checkbox"/>	<input type="checkbox"/>	<input type="checkbox"/>
12x	16x	20x	24x	28x	32x

The copy filmed here has been reproduced thanks to the generosity of:

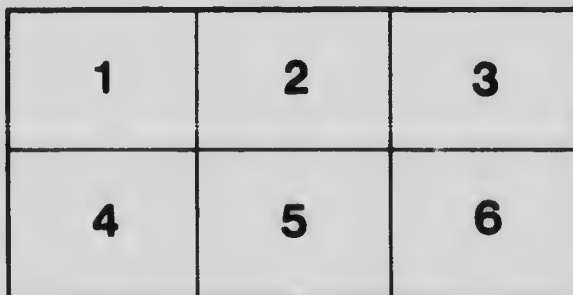
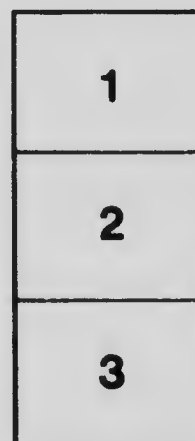
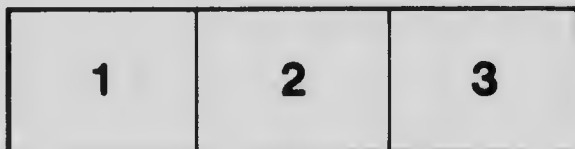
University of Toronto Library

The images appearing here are the best quality possible considering the condition and legibility of the original copy and in keeping with the filming contract specifications.

Original copies in printed paper covers are filmed beginning with the front cover and ending on the last page with a printed or illustrated impression, or the back cover when appropriate. All other original copies are filmed beginning on the first page with a printed or illustrated impression, and ending on the last page with a printed or illustrated impression.

The last recorded frame on each microfiche shell contain the symbol  $\rightarrow$  (meaning "CONTINUED"), or the symbol  $\nabla$  (meaning "END"), whichever applies.

Maps, plates, charts, etc., may be filmed at different reduction ratios. Those too large to be entirely included in one exposure are filmed beginning in the upper left hand corner, left to right and top to bottom, as many frames as required. The following diagrams illustrate the method:



L'exemplaire filmé fut reproduit grâce à la générosité de:

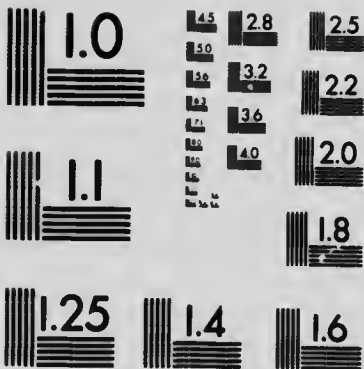
University of Toronto Library

Les images suivantes ont été reproduites avec le plus grand soin, compte tenu de la condition et de la netteté de l'exemplaire filmé, et en conformité avec les conditions du contrat de filmage.

Les exemplaires originaux dont la couverture en papier est imprimée sont filmés en commençant par le premier plat et en terminant soit par la dernière page qui comporte une empreinte d'impression ou d'illustration, soit par le second plat, selon le cas. Tous les autres exemplaires originaux sont filmés en commençant par la première page qui comporte une empreinte d'impression ou d'illustration et en terminant par la dernière page qui comporte une telle empreinte.

Un des symboles suivants apparaîtra sur la dernière image de chaque microfiche, selon le cas: le symbole  $\rightarrow$  signifie "A SUIVRE", le symbole  $\nabla$  signifie "FIN".

Les cartes, planches, tableaux, etc., peuvent être filmés à des taux de réduction différents. Lorsque le document est trop grand pour être reproduit en un seul cliché, il est filmé à partir de l'angle supérieur gauche, de gauche à droite, et de haut en bas, en prenant le nombre d'images nécessaire. Les diagrammes suivants illustrent la méthode.



MICROCOPY RESOLUTION TEST CHART  
NATIONAL BUREAU OF STANDARDS  
STANDARD REFERENCE MATERIAL 1010a  
(ANSI and ISO TEST CHART No. 2)



Ec PF  
C. 2124

---

---

# Canadian Municipal Statistics

January, 1914

170434  
3/5/22

**Wood, Gundy & Company**  
Toronto : London, Eng. : Saskatoon

---

---

*Copyright, Canada, 1913, by  
Wood, Gundy & Co.*

---

---

## Preface

**F**OR several years past there has been a growing demand for a publication that would contain reliable statistics of the financial position of Canadian municipalities, and this demand has been accentuated by the fact that of late Canadian municipal securities have been purchased to a steadily increasing extent by investors throughout Great Britain and United States.

With a view to meeting the need, we have gathered together information as to the financial condition of all the important municipalities, as well as the provinces of Canada. The figures have been given us, in almost every case, over the signature of the municipal official concerned.

The statistics of Canadian municipalities are undergoing continuous change, consequent upon the growth of the municipalities, and with this fact in mind, particular pains have been taken to ensure that the figures herein are correct up to the date of going to press.

The book is presented with the hope that it may be of substantial service to the steadily widening circle of investors in the securities of Canadian municipalities.

*Wood Gundy & Co.*





---

---

## Contents

	PAGES
Alphabetical Index of all Municipalities . . . . .	9- 20
Province of Prince Edward Island . . . . .	21- 23
Province of Nova Scotia . . . . .	25- 38
Province of New Brunswick . . . . .	39- . .
Province of Quebec . . . . .	49- 71
Province of Ontario—Cities and Towns . . . . .	73-140
Province of Ontario—Counties . . . . .	141-159
Province of Manitoba . . . . .	161-176
Province of Saskatchewan . . . . .	177-196
Province of Alberta . . . . .	197-212
Province of British Columbia . . . . .	213-233



---

---

## Alphabetical Index

	PAGE
Acton, Ont., Village of.....	133
Alberta, Province of.....	197
Alexandria, Ont., Town of.....	119
Alliston, Ont., Village of.....	140
Almonte, Ont., Town of.....	116
Amherst, N.S., Town of.....	28
Amherstburg, Ont., Town of.....	117
Armstrong, B.C., City of.....	232
Arnprior, Ont., Town of.....	99
Assiniboia, Man., Municipality of.....	166
Assiniboia, Sask., Town of.....	193
Athabasca Landing, Alta., Town of.....	209
Aurora, Ont., Town of.....	118
Aylmer, Que., Town of.....	65
Aylmer, Ont., Town of.....	121
Barrie, Ont., Town of.....	92
Bassano, Alta., Town of.....	207
Bathurst, N.B., Town of.....	45
Battleford, Sask., Town of.....	188
Belleville, Ont., City of.....	84
Berlin, Ont., City of.....	80
Black Lake, Que., Town of.....	67
Blairmore, Alta., Town of.....	207
Blenheim, Ont., Town of.....	138
Blind River, Ont., Town of.....	131
Bowmanville, Ont., Town of.....	106
Bracebridge, Ont., Town of.....	111
Brampton, Ont., Town of.....	102
Brandon, Man., City of.....	164
Brandon, Man., School District of.....	164
Brant., Ont., County of.....	141

---



---

	PAGE
Brantford, Ont., City of.....	77
Bridgeburg, Ont., Town of.....	130
Bridgewater, N.B., Town of.....	45
Brighton, Ont., Town of.....	139
British Columbia, Province of.....	213
Broadview, Sask., Town of.....	195
Brockville, Ont., Town of.....	86
Bruce, Ont., County of.....	141
Buckingham, Que., Town of.....	64
Burlington, Ont., Village of.....	126
Burnaby, B.C., District of.....	216
Calgary, Alta., City of.....	199
Calgary, Alta., School District of.....	199
Campbellford, Ont., Town of.....	107
Campbellton, N.B., Town of.....	43
Camrose, Alta., Town of.....	206
Canora, Sask., Town of.....	192
Carleton, Ont., County of.....	142
Carleton Place, Ont., Town of.....	103
Carman, Man., Town of.....	174
Cartierville, Que., Town of.....	71
Charlottetown, P.E.I., City of.....	23
Chatham, N.B., Town of.....	42
Chatham, Ont., City of.....	83
Chesley, Ont., Town of.....	132
Chicoutimi, P.Q., Town of.....	60
Chilliwack, B.C., City of.....	230
Clinton, Ont., Town of.....	122
Coaticook, Que., Town of.....	66
Cobalt, Ont., Town of.....	93
Cobourg, Ont., Town of.....	94
Cochrane, Ont., Town of.....	116
Coleman, Alta., Town of.....	205

---



---

---

	PAGE
Collingwood, Ont., Town of . . . . .	88
Coquitlam, B.C., Municipality of . . . . .	233
Cornwall, Ont., Town of . . . . .	90
Cranbrook, B.C., City of . . . . .	225
Dalhousie, N.B., Town of . . . . .	47
Dartmouth, N.S., Town of . . . . .	32
Dauphin, Man., Town of . . . . .	168
Dauphin, Man., School District of . . . . .	168
Delta, B.C., Municipality of . . . . .	224
Deseronto, Ont., Town of . . . . .	120
Digby, N.S., Town of . . . . .	38
Dominion, N.S., Town of . . . . .	35
Dresden, Ont., Town of . . . . .	134
Drummondville, Que., Town of . . . . .	68
Dufferin, Ont., County of . . . . .	142
Duncan, B.C., City of . . . . .	231
Dundas, Ont., Town of . . . . .	97
Dunnville, Ont., Town of . . . . .	109
Durham, Ont., Town of . . . . .	135
East Angus, Que., Town of . . . . .	67
Edmonton, Alta., City of . . . . .	200
Edmonton, Alta., School District of . . . . .	200
Edmunston, N.B., Town of . . . . .	46
Edson, Alta., Town of . . . . .	208
Elgin, Ont., County of . . . . .	143
Elmira, Ont., Town of . . . . .	125
Emerson, Man., Town of . . . . .	176
Enderby, B.C., City of . . . . .	232
Essex, Ont., County of . . . . .	143
Esquimalt, B.C., City of . . . . .	222
Estevan, Sask., Town of . . . . .	187
Farnham, Que., Town of . . . . .	63
Fergus, Ont., Village of . . . . .	135

---

---



---

	PAGE
Fernie, B.C., City of.....	221
Forest, Ont., Town of.....	139
Fort Frances, Ont., Town of.....	124
Fort Garry, Man., Municipality of.....	169
Fort William, Ont., City of.....	77
Fraserville, Que., City of.....	59
Fredericton, N.B., City of.....	42
Frontenac, Ont., County of.....	144
Galt, Ont., Town of.....	85
Gananoque, Ont., Town of.....	101
Glace Bay, N.S., Town of.....	28
Goderich, Ont., Town of.....	96
Granby, Que., Village of.....	61
Grand Falls, N.B., Town of.....	47
Grand Forks, B.C., City of.....	229
Grand Mere, Que., Town of.....	60
Gravenhurst, Ont., Town of.....	118
Greenwood, B.C., City of.....	233
Grey, Ont., County of.....	144
Grimsby, Ont., Village of.....	138
Guelph, Ont., City of.....	81
Haileybury, Ont., Town of.....	110
Haldimand, Ont., County of.....	145
Haliburton, Ont., County of.....	145
Halifax, N.S., City of.....	27
Halton, Ont., County of.....	146
Hamilton, Ont., City of.....	75
Hanover, Ont., Town of.....	108
Harriston, Ont., Town of.....	136
Hastings, Ont., County of.....	146
Hawkesbury, Ont., Town of.....	98
Hespeler, Ont., Town of.....	115

---



---

---



---

	PAGE
High River, Alta., Town of . . . . .	210
Hull, Que., City of . . . . .	53
Humboldt, Sask., Town of . . . . .	190
Huntsville, Ont., Town of . . . . .	125
Huron, Ont., County of . . . . .	147
Indian Head, Sask., Town of . . . . .	188
Ingersoll, Ont., Town of . . . . .	95
Inverness, N.S., Town of . . . . .	34
Joliette, Que., Town of . . . . .	58
Kamloops, B.C., City of . . . . .	221
Kamsack, Sask., Town of . . . . .	192
Kelowna, B.C., City of . . . . .	228
Kenora, Ont., Town of . . . . .	91
Kent, Ont., County of . . . . .	147
Kentville, N.S., Town of . . . . .	36
Kerrobot, Sask., Town of . . . . .	196
Kildonan, Man., Municipality of . . . . .	166
Killarney, Man., Town of . . . . .	176
Kincardine, Ont., Town of . . . . .	122
Kindersley, Sask., Town of . . . . .	194
Kingston, Ont., City of . . . . .	78
Kingsville, Ont., Town of . . . . .	132
Lachine, Que., City of . . . . .	55
Lacombe, Alta., Town of . . . . .	210
Ladysmith, B.C., City of . . . . .	225
Lambton, Ont., County of . . . . .	148
Lanark, Ont., County of . . . . .	148
Leamington, Ont., Town of . . . . .	106
Leeds and Grenville, Ont., Counties of . . . . .	149
Lennox and Addington, Ont., Counties of . . . . .	149
Lethbridge, Alta., City of . . . . .	202

---



---



---

	PAGE
Lethbridge, Alta., School District of . . . . .	202
Levis, Que., Town of . . . . .	58
Lincoln, Ont., County of . . . . .	150
Lindsay, Ont., Town of . . . . .	89
Liverpool, N.S., Town of . . . . .	37
London, Ont., City of . . . . .	76
Lunenburg, N.S., Town of . . . . .	34
Macdonald, Man., Municipality of . . . . .	170
Macleod, Alta., Town of . . . . .	204
Magog, Que., Town of . . . . .	62
Magrath, Alta., Town of . . . . .	211
Maisonneuve, Que., City of . . . . .	52
Manitoba, Province of . . . . .	161
Maple Creek, Sask., Town of . . . . .	189
Meaford, Ont., Town of . . . . .	113
Medicine Hat, Alta., City of . . . . .	201
Medicine Hat, Alta., School District of . . . . .	201
Megantic, Que., Town of . . . . .	66
Melfort, Sask., Town of . . . . .	190
Melville, Sask., Town of . . . . .	187
Merritton, Ont., Town of . . . . .	126
Merritt, B.C., City of . . . . .	230
Middlesex, Ont., County of . . . . .	150
Midland, Ont., Town of . . . . .	92
Milton, Ont., Town of . . . . .	129
Mimico, Ont., Town of . . . . .	123
Minnedosa, Man., Town of . . . . .	173
Mitchell, Ont., Town of . . . . .	131
Moncton, N.B., City of . . . . .	41
Montreal, Que., City of . . . . .	51
Moose Jaw, Sask., City of . . . . .	180
Moose Jaw, Sask., School District of . . . . .	180
Moosomin, Sask., Town of . . . . .	194

---

---

	PAGE
Morden, Man., Town of.....	175
Morrisburg, Ont., Village of.....	137
Mount Forest, Ont., Town of.....	130
Murray Bay, Que., Village of.....	71
Nanaimo, B.C., City of.....	218
Napanee, Ont., Town of.....	114
Neepawa, Man., Town of.....	172
Nelson, B.C., City of.....	219
New Brunswick, Province of.....	39
Newcastle, N.B., Town of.....	44
New Glasgow, N.S., Town of.....	29
New Hamburg, Ont., Village of.....	137
New Liskeard, Ont., Town of.....	113
Newmarket, Ont., Town of.....	105
New Westminster, B.C., City of.....	217
Niagara, Ont., Town of.....	134
Niagara Falls, Ont., City of..	83
Norfolk, Ont., County of.....	151
North Battleford, Sask., City of.....	183
North Battleford, Sask., School District of....	183
North Bay, Ont., Town of.....	67
North Cowichan, B.C., Municipality of.....	222
North Sydney, N.S., Town of.....	31
Northumberland and Durham, Ont., Counties of	151
North Vancouver, B.C., City of.....	218
North Vancouver, B.C., District of.....	223
Nova Scotia, Province of.....	25
Oak Bay, B.C., District of.....	224
Oakville, Ont., Town of.....	117
Ontario, Province of.....	73
Ontario, Ont., County of.....	152
Orangeville, Ont., Town of.....	120

---

---



---

	PAGE
Orillia, Ont., Town of . . . . .	88
Oshawa, Ont., Town of . . . . .	87
Ottawa, Ont., City of . . . . .	76
Outlook, Sask., Town of . . . . .	195
Outremont, Que., Town of . . . . .	56
Owen Sound, Ont., Town of . . . . .	85
Oxford, Ont., County of . . . . .	152
Palmerston, Ont., Town of . . . . .	129
Paris, Ont., Town of . . . . .	98
Parrsboro, N.S., Town of . . . . .	36
Parry Sound, Ont., Town of . . . . .	107
Peel, Ont., County of . . . . .	153
Pembroke, Ont., Town of . . . . .	89
Penetanguishene, Ont., Town of . . . . .	105
Penticton, B.C., Municipality of . . . . .	228
Perth, Ont., Town of . . . . .	102
Perth, Ont., County of . . . . .	153
Peterboro, Ont., City of . . . . .	78
Peterboro, Ont., County of . . . . .	154
Petrolia, Ont., Town of . . . . .	103
Phoenix, B.C., City of . . . . .	231
Picton, Ont., Town of . . . . .	108
Pictou, N.S., Town of . . . . .	33
Pincher Creek, Alta., Town of . . . . .	211
Point Grey, B.C., Municipality of . . . . .	217
Portage la Prairie, Man., City of . . . . .	167
Portage la Prairie, Man., School District of . . . . .	167
Port Arthur, Ont., City of . . . . .	79
Port Colborne, Ont., Town of . . . . .	127
Port Hood, N.S., Town of . . . . .	37
Port Hope, Ont., Town of . . . . .	95
Prescott, Ont., Town of . . . . .	111
Prescott and Russell, Ont., Counties of . . . . .	154

---



---

---

	PAGE
Preston, Ont., Town of.....	96
Prince Albert, Sask., City of.....	182
Prince Albert, Sask., School District of.....	182
Prince Edward, Ont., County of.....	155
Prince Edward Island, Province of.....	21
Prince Rupert, B.C., City of.....	220
Quebec, Province of.....	49
Quebec, Que., City of.....	51
Rainy River, Ont., Town of.....	133
Raymond, Alta., Town of.....	209
Redcliff, Alta., Town of.....	205
Red Deer, Alta., City of.....	203
Regina, Sask., City of.....	179
Regina, Sask., School District of.....	179
Renfrew, Ont., Town of.....	99
Renfrew, Ont., County of.....	155
Revelstoke, B.C., City of.....	226
Richmond, Que., Town of.....	69
Richmond, B.C., Municipality of.....	220
Ridgetown, Ont., Town of.....	124
Rimouski, Que., Town of.....	65
Rosser, Man., Municipality of.....	170
Rossland, B.C., City of.....	227
Rosthern, Sask., Town of.....	191
Saanich, B.C., Municipality of.....	219
Sackville, N.B., Town of.....	46
St. Andrews, Man., Municipality of.....	174
St. Boniface, Man., City of.....	165
St. Boniface, Man., School District of.....	165
St. Catharines, Ont., City of.....	82
St. Hyacinthe, Que., City of.....	55
St. Jerome, Que., Town of.....	64

---

---

	PAGE
St. John, N.B., City of.....	41
St. John's, Que., Town of.....	57
St. Lambert, Que., Town of.....	62
St. Laurent, Que., 'Town of.....	68
St. Mary's, Ont., Town of.....	104
St. Raymond, Que., Village of.....	70
St. Romuald d'Etchemin, Que., Town of.....	63
St. Stephen, N.B., Town of.....	44
St. Thomas, Ont., City of.....	81
St. Vital, Man., Municipality of.....	171
Sandwich, Ont., Town of.....	114
Sarnia, Ont., Town of.....	86
Saskatchewan, Province of.....	177
Saskatoon, Sask., City of.....	181
Saskatoon, Sask., School District of.....	181
Sault Ste Marie, Ont., City of.....	82
Seaforth, Ont., Town of.....	128
Selkirk, Man., Town of.....	171
Shawinigan Falls, Que., Town of.....	61
Shelburne, N.S., Town of.....	38
Sherbrooke, Que., City of.....	53
Simcoe, Ont., Town of.....	104
Simcoe, Ont., County of.....	156
Smith's Falls, Ont., Town of.....	90
Sorel, Que., City of.....	57
Souris, Man., Town of.....	173
South Vancouver, B.C., Municipality of.....	216
Spallumcheen, B.C., Municipality of.....	226
Springfield, Man., Municipality of.....	169
Springhill, N.S., Town of.....	31
Stayner, Ont., Village of.....	140
Steelton, Ont., Town of.....	94
Stellarton, N.S., Town of.....	33
Stettler, Alta., Town of.....	206

---

---



---

	PAGE
Stonewall, Man., Town of . . . . .	175
Stormont, Dundas and Glengarry, Ont., United Counties of . . . . .	156
Stratford, Ont., City of . . . . .	80
Strathroy, Ont., Town of . . . . .	110
Sturgeon Falls, Ont., Town of . . . . .	121
Sudbury, Ont., Town of . . . . .	91
Summerland, B.C., Municipality of . . . . .	227
Summerside, P.E.I., Town of . . . . .	23
Sutherland, Sask., Town of . . . . .	191
Swift Current, Sask., Town of . . . . .	184
Swift Current, Sask., School District of . . . . .	184
Sydney, N.S., City of . . . . .	27
Sydney Mines, N.S., Town of . . . . .	29
Taber, Alta., Town of . . . . .	204
Thessalon, Ont., Town of . . . . .	128
Thetford Mines, Que., City of . . . . .	59
Thorold, Ont., Town of . . . . .	112
Three Rivers, Que., City of . . . . .	54
Tillsonburg, Ont., Town of . . . . .	112
Toronto, Ont., City of . . . . .	75
Trail, B.C., City of . . . . .	229
Trenton, Ont., Town of . . . . .	100
Truro, N.S., Town of . . . . .	30
Uxbridge, Ont., Town of . . . . .	136
Valleyfield, Que., City of . . . . .	56
Vancouver, B.C., City of . . . . .	215
Vegreville, Alta., Town of . . . . .	208
Verdun, Que., Town of . . . . .	52
Vermilion, Alta., Town of . . . . .	212
Vernon, B.C., City of . . . . .	223
Virden, Man., Town of . . . . .	172
Victoria, Ont., County of . . . . .	157
Victoria, B.C., City of . . . . .	215

---



---

---



---

	PAGE
Wainwright, Alta., Town of . . . . .	212
Walkerton, Ont., Town of . . . . .	109
Walkerville, Ont., Town of . . . . .	100
Wallaceburg, Ont., Town of . . . . .	101
Waterloo, Que., Town of . . . . .	70
Waterloo, Ont., Town of . . . . .	97
Waterloo, Ont., County of . . . . .	157
Watrous, Sask., Town of . . . . .	193
Welland, Ont., Town of . . . . .	93
Welland, Ont., County of . . . . .	158
Wellington, Ont., County of . . . . .	158
Wentworth, Ont., County of . . . . .	159
Westmount, Que., City of . . . . .	54
Weston, Ont., Town of . . . . .	123
Westville, N.S., Town of . . . . .	32
Wetaskiwin, Alta., City of . . . . .	203
Weyburn, Sask., City of . . . . .	185
Weyburn, Sask., School District of . . . . .	185
Whitby, Ont., Town of . . . . .	119
Wiaraton, Ont., Town of . . . . .	127
Wilkie, Sask., Town of . . . . .	189
Windsor, N.S., Town of . . . . .	35
Windsor, Ont., City of . . . . .	79
Windsor Mills, Que., Town of . . . . .	69
Wingham, Ont., Town of . . . . .	115
Winnipeg, Man., City of . . . . .	163
Winnipeg, Man., School District of . . . . .	163
Wolseley, Sask., Town of . . . . .	196
Woodstock, N.B., Town of . . . . .	43
Woodstock, Ont., City of . . . . .	84
Yarmouth, N.S., Town of . . . . .	30
York, Ont., County of . . . . .	159
Yorkton, Sask., Town of . . . . .	186
Yorkton, Sask., School District of . . . . .	186

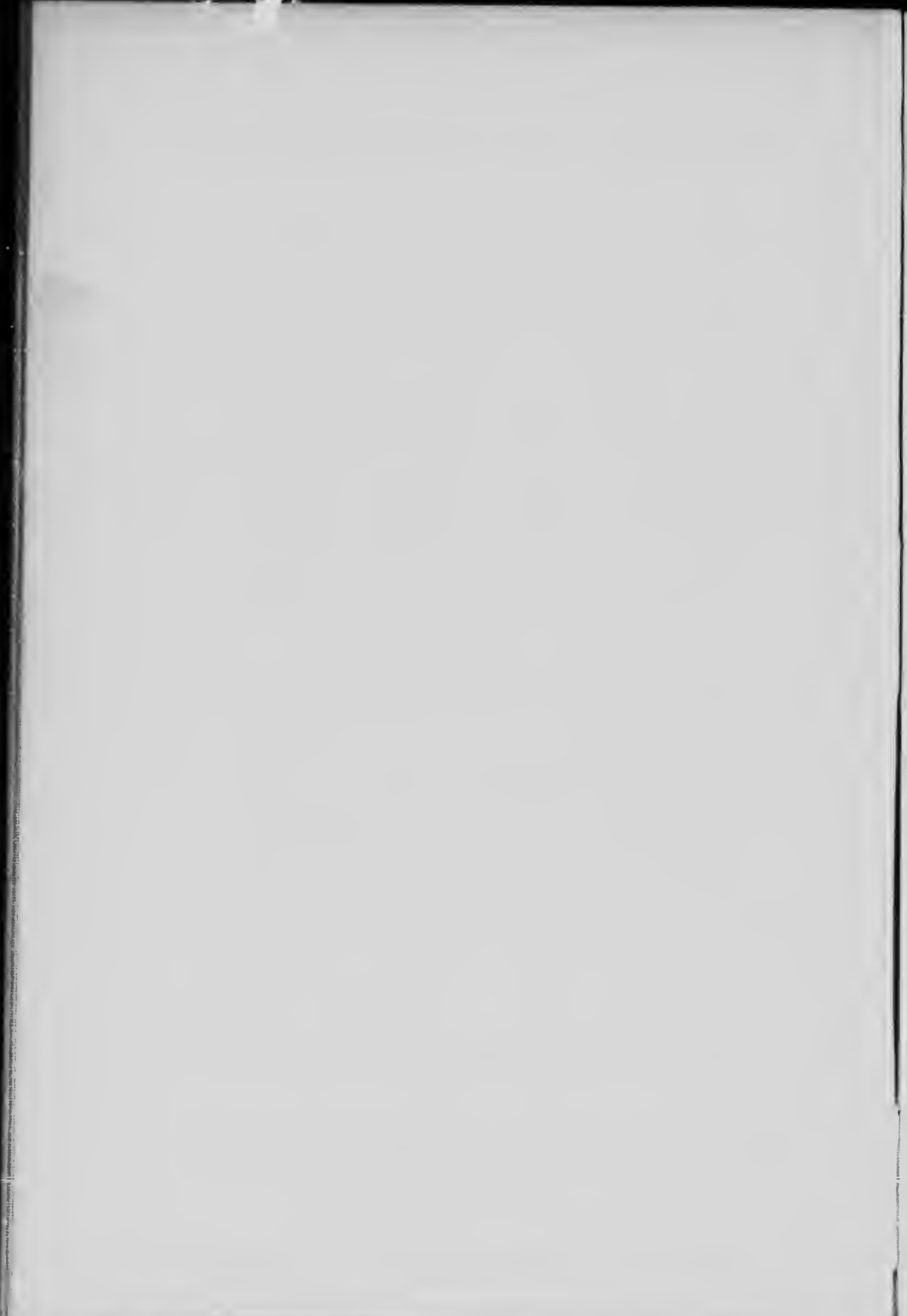
---

---

## Province of Prince Edward Island

Area . . . . .	2,184 square miles
Area under cultivation	1,856 square miles
Population, 1911 . . . . .	93,722
1901 . . . . .	103,259
Funded Debt . . . . .	\$818,000
Sinking Fund . . . . .	\$127,400
Annual Dominion Government	
Subsidy . . . . .	\$321,181





0

1

---

---

**City of Charlottetown, P.E.I.**

Assessed Value for Taxation.....	\$4,325,140
General Debenture Debt.....	747,500
Less,—Sinking Fund.....	\$162,039
Waterworks Debentures.....	249,500
	<hr/>
Net Debenture Debt.....	335,961
Value Municipality's Assets.....	726,091

Tax Rate, 11.25 mills.

Population, 12,000.

---

**Town of Summerside, P.E.I.**

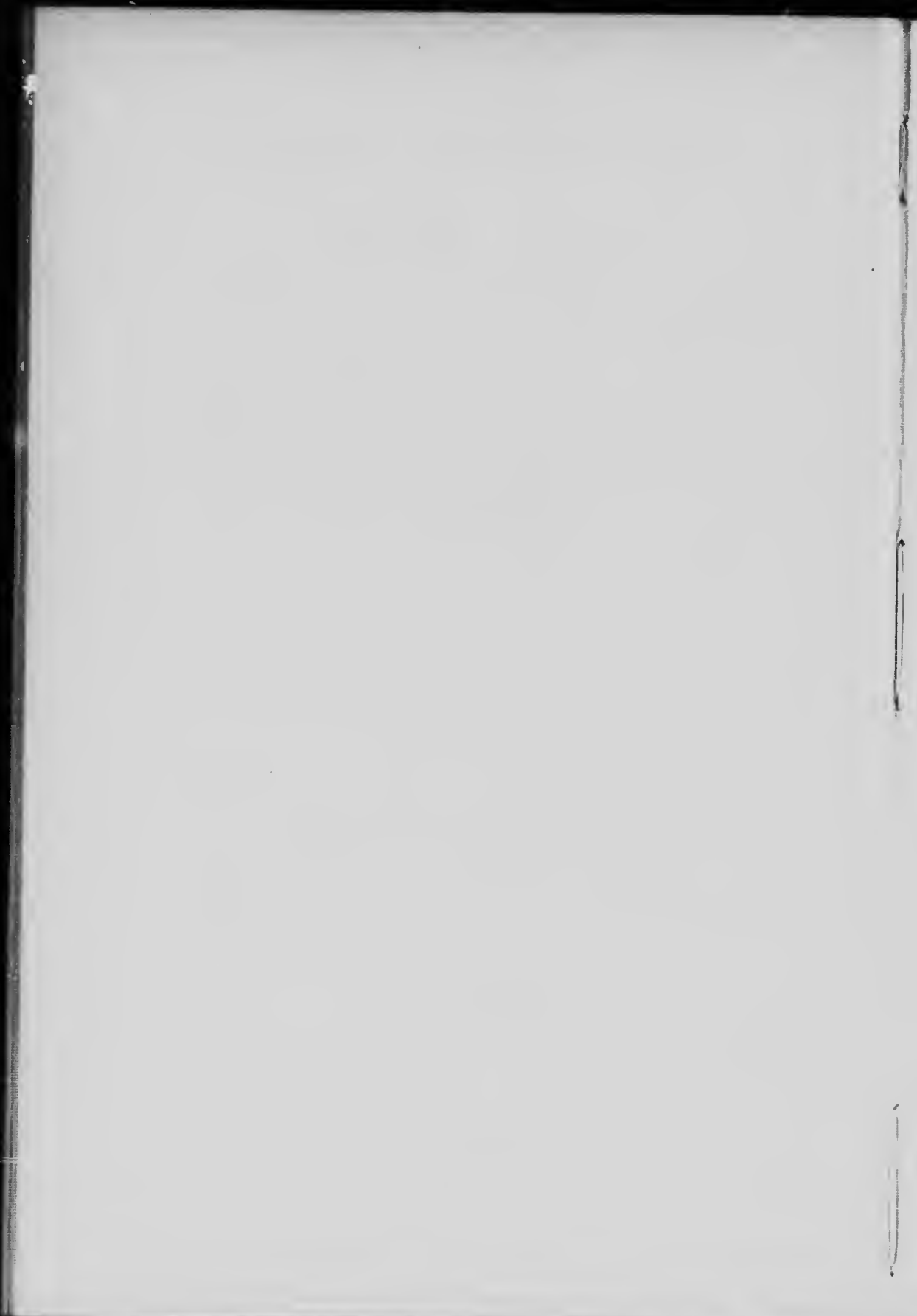
Assessed Value for Taxation.....	\$1,501,445
General Debenture Debt.....	113,500
Less,—Sinking Fund.....	\$11,325
Waterworks Debentures.....	90,000
	<hr/>
Net Debenture Debt.....	12,175
Value Municipality's Assets.....	157,790

Tax Rate, 20 mills.

Population, 3,200.

---

---

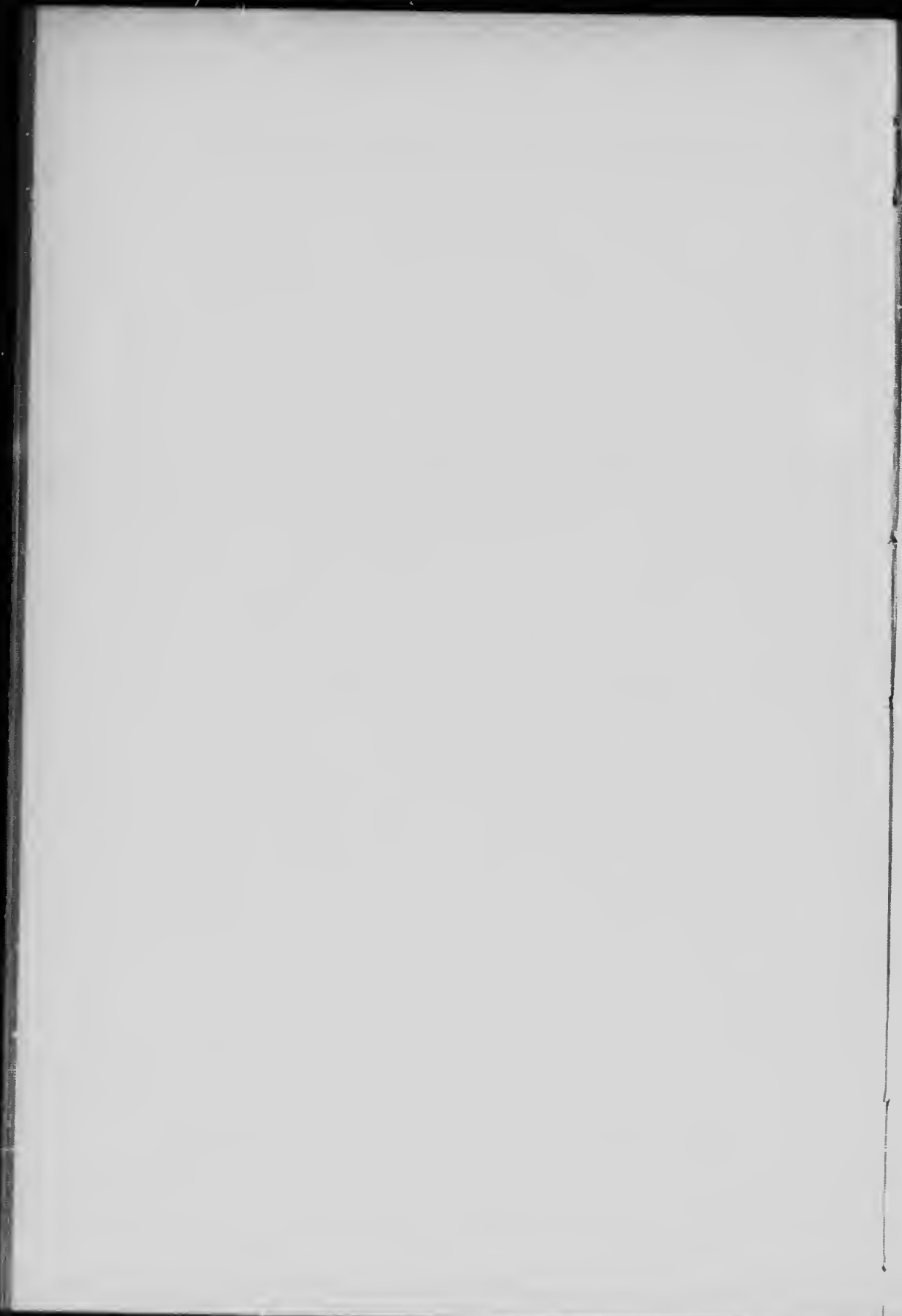


---

---

## Province of Nova Scotia

Area . . . . .	21,428 square miles
Population, 1911 . . . . .	492,338
1901 . . . . .	459,574
Funded Debt . . . . .	\$8,279,900
Annual Dominion Government Subsidy . . . . .	\$636,666



---

---

**City of Halifax, N.S.**

Assessed Value for Taxation.....	\$27,913,150
Exemptions not included above.....	11,698,900
General Debenture Debt.....	5,061,440
Less,—Sinking Fund.....	\$ 541,080
Waterworks Debentures.....	1,319,167
	<hr/>
Net Debenture Debt.....	3,201,193
Value Municipality's Assets.....	5,458,505

Population, 46,601

---

**City of Sydney, N.S.**

Assessed Value for Taxation.....	\$8,094,330
Exemptions not included above.....	9,000,000
General Debenture Debt.....	1,373,000
Less,—Sinking Fund.....	\$223,711
Waterworks Debe .....	440,000
	<hr/>
Net Debenture Debt.....	709,289
Value Municipality's Assets.....	1,110,000

Tax Rate, 22.25 mills

Population, 21,000

---



---

### Town of Glace Bay, N.S.

Assessed Value for Taxation.....		\$4,048,478
Exemptions not included above.....		4°,600
General Debenture Debt.....		750,000
Less, -Sinking Fund.....	\$ 36,506	
Waterworks Debentures.....	273,000	
Electric Light Debentures.....	85,000	394,506
Net Debenture Debt.....		355,494
Value Municipality's Assets.....		895,154

Tax Rate, 30 mills

Population, 16,980.

---

### Town of Amherst, N.S.

Assessed Value for Taxation.....		\$4,305,840
Exemptions not included above.....		750,000
General Debenture Debt.....		885,000
Less,—Sinking Fund.....	\$ 60,535	
Waterworks and Sewerage Debentures.....	414,000	474,535
Net Debenture Debt.....		410,465
Value Municipality's Assets.....		915,000

Tax Rate, 22 mills.

Population, 10,320.

---

---

### Town of Sydney Mines, N.S.

Assessed Value for Taxation.....		\$1,750,000
Exemptions not included above.....		50,000
General Debenture Debt.....		303,000
Less,—Sinking Fund.....	\$24,150	
Waterworks Debentures.....	80,500	104,650
Net Debenture Debt.....		198,350
Value Municipality's Assets.....		324,250

Tax Rate, 20 mills.

Population, 8,000.

---

### Town of New Glasgow, N.S.

Assessed Value for Taxation.....		\$3,486,050
Exemptions not included above.....		278,750
General Debenture Debt.....		568,640
Less,—Sinking Fund.....	\$ 35,450	
Waterworks Debentures.....	348,600	384,050
Net Debenture Debt.....		184,590
Value Municipality's Assets.....		410,000

Tax Rate, 23.50 mills.

Population, 10.

---

---



---

---

**Town of Truro, N.S.**

Assessed Value for Taxation.....		\$3,372,000
Exemptions not included above.....		500,000
General Debenture Debt.....		508,875
Less,—Sinking Fund.....	\$102,097	
Waterworks Debentures.....	164,450	266,547
Net Debenture Debt.....		242,328
Value Municipality's Assets.....		526,500

Tax Rate, 20 mills.

Population, 7,000.

---

**Town of Yarmouth, N.S.**

Assessed Value for Taxation.....		\$3,690,000
Exemptions not included above.....		50,000
General Debenture Debt.....		445,000
Less,—Sinking Fund.....	\$ 7,292	
Waterworks Debentures.....	357,000	364,292
Net Debenture Debt.....		80,708
Value Municipality's Assets.....		843,200

Tax Rate, 20 mills.

Population, 6,500.

---

---

---

---

**Town of Springhill, N.S.**

Assessed Value for Taxation.....		\$788,180
Exemptions not included above.....		200,000
General Debenture Debt.....		219,000
Less,—Sinking Fund.....	\$ 11,000	
Waterworks Debentures .....	140,000	151,000
Net Debenture Debt.....		68,000
Local Improvement Debt.....		280,835

Tax Rate, 25 mills.

Population, 5,900.

---

**Town of North Sydney, N.S.**

Assessed Value for Taxation.....		\$1,839,475
Exemptions not included above.....		162,100
General Debenture Debt.....		382,800
Less,—Sinking Fund.....	\$ 65,862	
Waterworks and Sewerage Debentures.....	241,500	307,362
Net Debenture Debt.....		75,438
Value Municipality's Assets.....		391,483

Tax Rate, 18.50 mills.

Population, 5,418

---

---

---

---

### Town of Dartmouth, N.S.

Assessed Value for Taxation.....		\$2,368,414
General Debenture Debt.....		281,900
Less,—Sinking Fund.....	\$ 11,642	
Waterworks and Sewerage Debentures.....	223,700	235,342
Net Debenture Debt.....		46,558
Value Municipality's Assets.....		460,689

Tax Rate, 15.50 mills.

Population, 5,058.

---

### Town of Westville, N.S.

Assessed Value for Taxation.....		\$1,037,775
Exemptions not included above.....		31,100
General Debenture Debt.....		85,000
Less,—Sinking Fund.....	\$12,859	
Waterworks Debentures.....	70,000	82,859
Net Debenture Debt.....	\$	2,141
Value Municipality's Assets.....		124,078

Tax Rate, 15 mills.

Population, 4,526.

---

---

---

---

### Town of Stellarton, N.S.

Assessed Value for Taxation.....	\$1,060,000	
General Debenture Debt.....	155,500	
Less,—Sinking Fund.....	\$11,382	
Waterworks Debentures.....	85,000	96,382
Net Debenture Debt.....		59,118
Value Municipality's Assets.....		157,514

Tax Rate, 20 mills.

Population, 4,500.

---

### Town of Pictou, N.S.

Assessed Value for Taxation.....	\$1,106,560	
Exemptions not included above.....	51,525	
General Debenture Deb' .....	244,600	
Less,—Sinking Fund.....	\$ 20,498	
Waterworks and Sewerage Debentures.....	119,900	140,398
Net Debenture Debt.....		104,202
Value Municipality's Assets.....		281,394

Tax Rate, 35 mills.

Population, 3,173.

---

---

---

---

**Town of Inverness, N.S.**

Assessed Value for Taxation.....		\$454,000
Exemptions not included above.....		100,000
General Debenture Debt.....		67,000
Less,—Sinking Fund.....	\$ 6,445	
Waterworks Debentures.....	52,000	58,445
Net Debenture Debt.....		8,555
Value Municipality's Assets .....		70,000

Tax Rate, 25 mills.

Population, 3,000.

---

**Town of Lunenburg, N.S.**

Assessed Value for Taxation.....		\$1,147,930
Exemptions not included above.....		125,000
General Debenture Debt.....		191,700
Less,—Sinking Fund.....	\$ 3,700	
Waterworks Debentures.....	83,700	87,400
Net Debenture Debt.....		104,300
Value Municipality's Assets .....		125,000

Tax Rate, 20 mills.

Population, 3,000.

---

---

---

---

**Town of Windsor, N.S.**

Assessed Value for Taxation.....	\$1,334,775
Exemptions not included above.....	400,000
General Debenture Debt.....	142,000
Less,—Sinking Fund.....	\$34,342
Waterworks Debentures.....	60,000
	94,342
Net Debenture Debt.....	47,658
Value Municipality's Assets.....	200,000

Population, 3,000.

---

**Town of Dominion, N.S.**

Assessed Value for Taxation.....	\$517,035
Exemptions not included above.....	2,400
General Debenture Debt.....	6,300
Less, Waterworks and Sewerage Debentures.....	4,000
	2,300
Net Debenture Debt.....	2,300
Value Municipality's Assets.....	25,708

Tax Rate, 20 mills.

Population, 2,589.

---

---

**Town of Parrsboro, N.S.**

Assessed Value for Taxation.....		\$490,904
General Debenture Debt.....		97,400
Less,—Sinking Fund.....	\$ 1,602	
Waterworks and Sewerage Debentures.....	55,500	57,102
Net Debenture Debt.....		40,298
Value Municipality's Assets.....		121,791

Tax Rate, 18 mills.

Population, 2,500.

---

**Town of Kentville, N.S.**

Assessed Value for Taxation.....		\$585,200
Exemptions not included above.....		144,000
General Debenture Debt.....		85,150
Less,—Sinking Fund.....	\$ 9,900	
Waterworks Debentures.....	56,000	65,600
Net Debenture Debt.....		19,250
Value Municipality's Assets.....		86,117

Tax Rate, 17.60 mills.

Population, 2,500

---

---

---

---

### Town of Port Hood, N.S.

Assessed Value for Taxation.....	\$220,585
Exemptions not included above.....	7,050
General Debenture Debt.....	11,500
Less, Sinking Fund.....	907
Net Debenture Debt.....	10,593
Value Municipality's Assets.....	13,272

Tax Rate, 18.60 mills.

Population, 2,300.

---

### Town of Liverpool, N.S.

Assessed Value for Taxation.....	\$725,735
Exemptions not included above.....	25,540
General Debenture Debt.....	167,320
Less,—Sinking Fund.....	\$10,787
Waterworks and Sewerage Debentures .....	33,100 43,887
Net Debenture Debt.....	123,433
Value Municipality's Assets.....	175,853

Tax Rate, 16 mills.

Population, 2,100.

---

---



---

---

**Town of Shelburne, N.S.**

Assessed Value for Taxation.....		\$373,780
Exemptions not included above.....		100,000
General Debenture Debt.....		40,500
Less,—Sinking Fund.....	\$ 3,404	
Electric Light Debentures.....	25,500	28,904
Net Debenture Debt.....		11,596
Value Municipality's Assets.....		50,000

Tax Rate, 19.60 mills.

Population, 1,600.

---

**Town of Digby, N.S.**

Assessed Value for Taxation.....		\$503,059
General Debenture Debt.....		41,800
Less,—Sinking Fund.....	\$ 571	
Waterworks Debentures.....	36,300	36,871
Net Debenture Debt.....		4,929
Value Municipality's Assets.....		54,993

Tax Rate, 17.50 mills.

Population, 1,250.

---

---

---

---

Province of New Brunswick

Area . . . . .	27,985 square miles
Population, 1911 . . . . .	351,899
1901 . . . . .	331,120
Funded Debt . . . . .	\$5,902,347
Annual Dominion Government Subsidy . . . . .	\$632,976



---

---

**City of St. John, N.B.**

Assessed Value for Taxation.....	\$50,624,800
General Debenture Debt.....	4,137,306
Less,—Sinking Fund.....	\$1,043,342
Waterworks Debentures.....	1,771,830
	2,815,172
Net Debenture Debt.....	1,322,134
Value Municipality's Assets.....	7,677,653
Population, 56,000.	

---

**City of Morcton, N.B.**

Assessed Value for Taxation.....	\$6,967,137
Exemptions not included above.....	5,000,000
General Debenture Debt.....	1,205,159
Less,—Sinking Fund.....	\$ 13,342
Waterworks and Electric Light Debentures.....	749,808
	763,150
Net Debenture Debt.....	442,009
Value Municipality's Assets.....	1,400,961
Population, 14,000.	

---

---

**City of Fredericton, N.B.**

Assessed Value for Taxation.....		\$5,173,679
General Debenture Debt.....		502,186
Less,—Sinking Fund.....	\$ 3,095	
Waterworks Debentures.....	208,000	
Electric Light Debentures.....	20,000	231,095
Net Debenture Debt.....		271,091
Value Municipality's Assets.....		674,079

Population, 8,000.

---

**Town of Chatham, N.B.**

Assessed Value for Taxation.....		\$1,500,000
General Debenture Debt.....		277,731
Less,—Sinking Fund.....		37,018
Net Debenture Debt.....		240,713
Value Municipality's Assets.....		317,080

Population, 5,000.

---

---

### Town of Campbellton, N.B.

Assessed Value for Taxation.....		\$2,318,200
Exemptions not included above.....		330,000
General Debenture Debt.....		400,400
Less,—Sinking Fund.....	\$ 5,562	
Waterworks Debentures.....	205,000	
Electric Light Debentures.....	90,000	300,562
Net Debenture Debt.....		99,838
Value Municipality's Assets.....		499,258

Tax Rate, 15 mills.

Population, 4,500.

---

### Town of Woodstock, N.B.

Assessed Value for Taxation.....		\$2,500,000
General Debenture Debt.....		172,000
Less,—Sinking Fund.....	\$ 4,000	
Waterworks Debentures.....	85,000	89,000
Net Debenture Debt.....		83,000

Tax Rate, 17 mills.

Population, 4,000.

---

---

---

---

**Town of Newcastle, N.B.**

Assessed Value for Taxation.....		\$935,150
Exemptions not included above.....		200,000
General Debenture Debt.....		205,000
Less,—Sinking Fund.....	\$ 19,420	
Waterworks and Electric Light Debentures.....	173,000	192,420
Net Debenture Debt.....		12,580
Value Municipality's Assets.....		209,883

Tax Rate, 38 mills.

Population, 2,945.

---

**Town of St. Stephen, N.B.**

Assessed Value for Taxation.....		\$1,543,800
Exemptions not included above.....		100,000
General Debenture Debt.....		312,100
Less,—Sinking Fund.....	\$ 13,387	
Waterworks Debentures.....	225,000	238,387
Net Debenture Debt.....		73,713
Value Municipality's Assets.....		285,000

Tax Rate, 22 mills.

Population, 2,900.

---

---

---

---

**Town of Bridgewater, N.B.**

Assessed Value for Taxation.....		\$711,810
Exemptions not included above.....		42,635
General Debenture Debt.....		192,000
Less,—Sinking Fund.....	\$ 8,181	
Waterworks and Sewerage		
Debentures.....	79,000	87,181
Net Debenture Debt.....		104,819
Value Municipality's Assets.....		235,609

Tax Rate, 15.50 mills.

Population, 2,500.

---

**Town of Bathurst, N.B.**

Assessed Value for Taxation.....	\$400,000
Exemptions not included above.....	55,000
General Debenture Debt.....	25,500
Value Municipality's Assets.....	7,500

Tax Rate, 30.60 mills.

Population, 2,300.



---

---

**Town of Sackville, N.B.**

Assessed Value for Taxation.....		\$1,066,100
Exemptions not included above.....		500,000
General Debenture Debt.....		125,600
Less,—Sinking Fund.....	\$ 3,172	
Waterworks Debentures.....	102,500	105,672
Net Debenture Debt.....		19,928
Value Municipality's Assets.....		130,000

Tax Rate, 15.50 mills.

Population, 2,300.

---

**Town of Edmunston, N.B.**

Assessed Value for Taxation.....		\$800,000
General Debenture Debt.....		160,000
Less, Waterworks and Electric Light Debentures..		160,000
Value of Municipality's Assets.....		180,000

Tax Rate, 21.50 mills.

Population, 1,900.

---

---

---

---

**Town of Dalhousie, N.B.**

Assessed Value for Taxation.....		\$383,425
Exemptions not included above.....		324,241
General Debenture Debt.....		105,000
Less,—Sinking Fund.....	\$ 1,545	
Waterworks Debentures.....	75,000	76,545
Net Debenture Debt.....		28,455
Value Municipality's Assets.....		86,000

Tax Rate, 14 mills.

Population, 1,800.

---

**Town of Grand Falls, N.B.**

Assessed Value for Taxation.....		\$280,000
General Debenture Debt.....		70,000
Less,—Sinking Fund.....	\$ 1,800	
Waterworks Debentures.....	60,000	61,800
Net Debenture Debt.....		8,200
Value Municipality's Assets.....		150,000

Population, 1,280.

---

---



---

---

## Province of Quebec

Area . . . . .	706,834 square miles
Population, 1911 . . . . .	2,002,712
1901 . . . . .	1,648,898
Funded Debt . . . . .	\$24,759,799
Sinking Fund . . . . .	\$1,207,165
Annual Dominion Government Subsidy . . . . .	\$1,967,556
Revenue for last fiscal year . . . . .	\$8,070,100
Expenditure for last fiscal year . . . . .	\$7,386,670



---

---

### City of Montreal, Que.

Assessed Value for Taxation.....	\$617,000,000
Exemptions not included above.....	180,000,000
General Debenture Debt.....	74,320,290
Sinking Fund.....	492,000
Value Municipality's Assets.....	55,000,000

Tax Rate, 15 mills.

Population, 550,000.

---

### City of Quebec, Que.

Assessed Value for Taxation.....	\$61,717,081
Exemptions not included above.....	23,010,456
General Debenture Debt.....	11,924,406
Less,—Sinking Fund.....	\$ 77,629
Waterworks Debentures .....	4,000,000
	<hr/> 4,077,629
Net Debenture Debt.....	7,846,777
Value Municipality's Assets.....	5,794,439

Tax Rate, 17.50 mills.

Population, 90,000.

---

---

**City of Maisonneuve, Que.**

Assessed Value for Taxation.....	\$29,964,950
Exemptions not included above.....	13,941,400
General Debenture Debt.....	7,078,000
Value Municipality's Assets.....	6,200,000

Tax Rate, 10 mills.

Population, 36,607.

---

**Town of Verdun, Que.**

Assessed Value for Taxation.....	\$13,705,330
Exemptions not included above.....	1,294,670
General Debenture Debt.....	1,000,000
Less,—Sinking Fund.....	\$ 51,256
Waterworks Debentures .....	212,000
Electric Light Debentures.....	125,000
	388,256
Net Debenture Debt.....	611,744
Value Municipality's Assets.....	907,171

Tax Rate, 10 mills.

Population, 26,000.

---

---

**City of Hull, Que.**

Assessed Value for Taxation.....		\$9,746,197
Exemptions not included above.....		2,666,177
General Debenture Debt.....		1,436,400
Less,—Sinking Fund.....	\$112,917	
Waterworks Debentures.....	774,400	887,317
Net Debenture Debt.....		549,083
Value Municipality's Assets.....		1,395,704
Population, 20,684.		

---

**City of Sherbrooke, Que.**

Assessed Value for Taxation.....		\$8,039,350
Exemptions not included above.....		2,612,900
General Debenture Debt.....		1,709,500
Less,—Sinking Fund.....	\$ 63,940	
Waterworks Debentures.....	302,500	
Electric Light Debentures.....	250,000	616,440
Net Debenture Debt.....		1,093,060
Value Municipality's Assets.....		1,496,489
Tax Rate, 19.50 mills.		
Population, 10,856.		



---

---

**City of Westmount, Que.**

Assessed Value for Taxation.....	\$42,029,411	
Exemptions not included above.....	8,469,919	
General Debenture Debt.....	3,781,666	
Less,—Sinking Fund.....	\$323,119	
Electric Light Debentures.....	425,000	748,119
Net Debenture Debt.....	3,038,547	
Value Municipality's Assets.....	3,714,000	

Population, 18,500.

---

**City of Three Rivers, Que.**

Assessed Value for Taxation.....	\$9,268,950	
Exemptions not included above.....	4,388,415	
General Debenture Debt.....	1,765,229	
Less,—Sinking Fund.....	\$136,726	
Waterworks Debentures.....	310,000	446,726
Net Debenture Debt.....	1,318,503	

Tax Rate, 13 mills.

Population, 18,000.

---

---

### City of Lachine, Que.

Assessed Value for Taxation.....	\$12,117,031	
Exemptions not included above.....	1,016,744	
General Debenture Debt.....	1,357,000	
Less,—Sinking Fund.....	\$ 2,560	
Waterworks Debentures.....	313,390	
Electric Light Debentures.....	83,500	399,450
Net Debenture Debt.....	957,550	
Value Municipality's Assets.....	876,500	

Tax Rate, 12 mills.

Population, 15,000.

---

### City of St. Hyacinthe, Que.

Assessed Value for Taxation.....	\$3,269,375	
Exemptions not included above.....	2,454,305	
General Debenture Debt.....	703,769	
Less,—Waterworks Debentures.....	\$222,082	
Electric Light Debentures.....	48,900	270,982
Net Debenture Debt.....	432,787	
Value Municipality's Assets.....	587,332	

Population, 11,116.

---

---

---

---

**Town of Outremont, Que.**

Assessed Value for Taxation.....	\$12,136,363
Exemptions not included above.....	4,094,463
General Debenture Debt.....	1,850,000
Sinking Fund.....	59,245
Value Municipality's Assets.....	637,597

Tax Rate, 7 mills.

Population, 10,000.

---

**City of Valleyfield, Que.**

Assessed Value for Taxation.....	\$1,823,600
Exemptions not included above.....	628,400
General Debenture Debt.....	648,000
Value Municipality's Assets.....	657,380

Tax Rate, 19.50 mills.

Population, 10,000.

---

---

**City of Sorel, Que.**

Assessed Value for Taxation.....	\$2,490,850
Exemptions not included above.....	1,445,600
General Debenture Debt.....	495,000
Less,—Waterworks Debentures.....	\$148,325
Gas Debentures.....	46,000
	194,325
Net Debenture Debt.....	300,675
Value Municipality's Assets.....	341,000

Population, 8,446.

---

**Town of St. Johns, Que.**

Assessed Value for Taxation.....	\$3,700,000
Exemptions not included above.....	1,200,000
General Debenture Debt.....	228,000
Value Municipality's Assets.....	280,000

Tax Rate, 13 mills.

Population, 8,200

---

---

### Town of Joliette, Que.

Assessed Value for Taxation.....	\$2,589,220
Exemptions not included above.....	1,673,300
General Debenture Debt.....	343,000
Sinking Fund.....	5,339
Value Municipality's Assets.....	494,600

Population, 7,636.

---

### Town of Levis, Que.

Assessed Value for Taxation.....	\$2,640,097
Exemptions not included above.....	2,478,500
General Debenture Debt.....	679,000
Less,—Waterworks Debentures.....	427,000
Net Debenture Debt.....	252,000
Value Municipality's Assets.....	713,000

Tax Rate, 7.50 mills.

Population, 7,440.

---

---

**City of Thetford Mines, Que.**

Assessed Value for Taxation.....	\$2,355,975
Exemptions not included above.....	9,000,000
General Debenture Debt.....	312,000
Less,—Sinking Fund.....	\$ 5,000
Waterworks Debentures.....	200,000
	<hr/>
Net Debenture Debt.....	107,000
Value Municipality's Assets.....	324,000

Tax Rate, 13.50 mills.

Population, 7,200.

---

**City of Fraserville, Que.**

Assessed Value for Taxation.....	\$2,341,735
Exemptions not included above.....	2,787,525
General Debenture Debt.....	757,000
Less,—Sinking Fund.....	\$ 21,783
Waterworks Debentures.....	383,000
Electric Light Debentures.....	143,000
	<hr/>
Net Debenture Debt.....	209,217

Tax Rate, 7.50 mills.

Population, 7,000.

---

---

---

---

**Town of Chicoutimi, Que.**

Assessed Value for Taxation.....	\$1,850,000
Exemptions not included above.....	1,004,000
General Debenture Debt.....	739,160
Less, Waterworks Debentures.....	250,000
Net Debenture Debt.....	489,160
Value Municipality's Assets.....	551,927

Tax Rate, 19.50 mills.

Population, 7,000.

---

**Town of Grand Mere, Que.**

Assessed Value for Taxation.....	\$1,500,000
Exemptions not included above.....	2,500,000
General Debenture Debt.....	225,000
Less,—Sinking Fund.....	\$15,000
Waterworks Debentures.....	80,000
Electric Light Debentures.....	60,000
Net Debenture Debt.....	70,000
Value Municipality's Assets.....	200,000

Population, 6,000.

---

---

**Town of Shawinigan Falls, Que.**

Assessed Value for Taxation.....		\$8,947,479
Exemptions not included above.....		537,525
General Debenture Debt.....		285,000
Less,—Sinking Fund.....	\$ 3,697	
Waterworks Debentures.....	35,000	38,697
Net Debenture Debt.....		246,303
Value Municipality's Assets.....		25,830

Population, 5,367.

---

**Village of Granby, Que.**

Assessed Value for Taxation.....		\$1,842,460
Exemptions not included above.....		772,750
General Debenture Debt.....		260,000
Less,—Waterworks Debentures.....	\$100,000	
Electric Light Debentures.....	15,000	115,000
Net Debenture Debt.....		145,000
Value Municipality's Assets.....		230,000

Tax Rate, 24 mills.

Population, 5,000.



---

---

**Town of St. Lambert, Que.**

Assessed Value for Taxation.....		\$4,508,920
Exemptions not included above.....		381,129
General Debenture Debt.....		884,982
Less,—Waterworks Debentures.....	\$71,000	
Electric Light Debentures.....	7,060	78,000
Net Debenture Debt.....		806,982
Value Municipality's Assets.....		431,792

Tax Rate, 12 mills.

Population, 4,000.

---

**Town of Magog, Que.**

Assessed Value for Taxation.....		\$645,531
General Debenture Debt.....		195,565
Less,—Waterworks Debentures.....	\$42,640	
Electric Light Debentures.....	13,750	56,390
Net Debenture Debt.....		139,175
Value Municipality's Assets.....		100,478

Tax Rate, 16 mills.

Population, 4,000.

---

---

---



---

**Town of St. Romuald d'Etchemin, Que.**

Assessed Value for Taxation.....	\$538,450
Exemptions not included above.....	573,800
General Debenture Debt.....	70,000
Value Municipality's Assets.....	82,623

Population, 3,943.

---

**Town of Farnham, Que.**

Assessed Value for Taxation.....	\$1,049,275
Exemptions not included above.....	973,100
General Debenture Debt.....	230,000
Less,—Waterworks Debentures.....	\$ 30,000
Electric Light Debentures.....	108,500
Total Debenture Debt.....	91,500
Value Municipality's Assets.....	571,591

Tax Rate, 8 mills.

Population, 3,900.

---

---

**Town of St. Jerome, Que.**

Assessed Value for Taxation.....	\$1,614,500	
Exemptions not included above.....	298,900	
General Debenture Debt.....	352,867	
Less,—Waterworks Debentures.....	\$ 67,887	
Electric Light Debentures.....	165,000	232,887
Net Debenture Debt.....	119,980	
Value Municipality's Assets.....	250,303	

Population, 3,873.

---

**Town of Buckingham, Que.**

Assessed Value for Taxation.....	\$639,241	
Exemptions not included above.....	188,975	
General Debenture Debt.....	173,500	
Less,—Sinking Fund.....	\$22,600	
Waterworks Debentures.....	75,000	97,600
Net Debenture Debt.....	75,900	
Value Municipality's Assets.....	235,000	

Tax Rate, 15 mills.

Population, 3,800.

---

---

**Town of Rimouski, Que.**

Assessed Value for Taxation.....	\$963,089
Exemptions not included above.....	276,950
General Debenture Debt.....	155,000
Less, Waterworks Debentures.....	125,000
Net Debenture Debt.....	30,000
Value Municipality's Assets.....	135,741

Tax Rate, 17.50 mills.

Population, 3,100.

---

**Town of Aylmer, Que.**

Assessed Value for Taxation.....	\$652,135
Exemptions not included above.....	183,450
General Debenture Debt.....	120,200
Less,—Sinking Fund.....	\$ 955
Waterworks Debentures.....	50,000
Net Debenture Debt.....	69,245
Value Municipality's Assets.....	78,135

Population, 3,100.

---

---

**Town of Coaticook, Que.**

Assessed Value for Taxation.....	\$1,076,305
Exemptions not included above.....	109,800
General Debenture Debt.....	159,200
Less, Waterworks Debentures.....	65,000
	<hr/>
Net Debenture Debt.....	94,200
Value Municipality's Assets.....	92,000

Tax Rate, 12.50 mills.

Population, 3,100.

---

**Town of Megantic, Que.**

Assessed Value for Taxation.....	\$723,800
Exemptions not included above.....	221,235
General Debenture Debt.....	74,130
Less, Waterworks Debentures.....	37,258
	<hr/>
Net Debenture Debt.....	36,881

Population, 2,904.

---

---

---

---

**Town of Black Lake, Que.**

Assessed Value for Taxation.....	\$711,260
Exemptions not included above.....	86,000
General Debenture Debt.....	110,000
Value Municipality's Assets.....	125,076

Population, 2,500.

---

**Town of East Angus, Que.**

Assessed Value for Taxation.....		\$656,375
Exemptions not included above.....		56,400
General Debenture Debt.....		76,000
Less,—Sinking Fund.....	\$ 1,200	
Waterworks Debentures.....	70,000	71,200
Net Debenture Debt.....		4,800

Population, 2,500.

---

---

**Town of Drummondville, Que.**

Assessed Value for Taxation.....	\$840,785
Exemptions not included above.....	329,100
General Debenture Debt.....	152,000
Value Municipality's Assets.....	80,000

Tax Rate, 21.50 mills.

Population, 2,500.

---

**Town of St. Laurent, Que.**

Assessed Value for Taxation.....	\$1,072,679
Exemptions not included above.....	8,500
General Debenture Debt.....	211,750
Value Municipality's Assets.....	215,050

Tax Rate, 7 mills.

Population, 2,500.

---

---

**Town of Windsor Mills, Que.**

Assessed Value for Taxation.....		\$802,695
General Debenture Debt.....		70,100
Less,—Waterworks Debentures.....	\$19,000	
Electric Light Debentures.....	27,375	46,375
Net Debenture Debt.....		23,725

Population, 2,233.

---

**Town of Richmond, Que.**

Assessed Value for Taxation.....		\$664,944
Exemptions not included above.....		182,300
General Debenture Debt.....		101,882
Less, Waterworks Debentures.....		55,000
Net Debenture Debt.....		46,882
Value Municipality's Assets.....		108,503

Population, 2,175.



---

---

**Town of Waterloo, Que.**

Assessed Value for Taxation.....		\$560,950
Exemptions not included above.....		172,600
General Debenture Debt.....		58,750
Less,—Sinking Fund.....	\$ 3,500	
Waterworks Debentures.....	40,000	48,500
Net Debenture Debt.....		15,250
Value Municipality's Assets.....		60,000

Population, 2,000.

---

**Village of St. Raymond, Que.**

Assessed Value for Taxation.....		\$145,985
Exemptions not included above.....		67,000
General Debenture Debt.....		2,500

Population, 1,632.

---

---

**Town of Cartierville, Que.**

Assessed Value for Taxation.....	\$2,527,130
Exemptions not included above.....	358,850
General Debenture Debt.....	162,000
Value Municipality's Assets.....	133,000

Tax Rate, 10 mills.

Population, 1,550.

---

**Village of Murray Bay, Que.**

Assessed Value for Taxation.....	\$311,725
Exemptions not included above.....	131,000
General Debenture Debt.....	43,158
Less, Waterworks Debentures.....	35,000
Net Debenture Debt.....	8,158
Value Municipality's Assets.....	442,725

Tax Rate, 9 mills.

Population, 1,500.



---

---

## Province of Ontario

Area . . . . .	407,252 square miles
Population, 1911 . . . . .	2,523,208
1901 . . . . .	2,182,947
Funded Debt . . . . .	\$29,419,788
Sinking Fund . . . . .	\$319,988
Annual Dominion Government	
Subsidy . . . . .	\$2,396,379
Revenue for last fiscal year .	\$10,042,000
Expenditure for last fiscal year	\$10,287,991



---

---

### City of Toronto, Ont.

Assessed Value for Taxation.....	\$436,120,049
Exemptions not included above.....	52,961,546
General Debenture Debt.....	57,253,296
Less,—Sinking Fund.....	\$10,283,748
Waterworks Debentures.....	8,968,455
Hydro-Electric Debentures....	5,650,000
	<hr/>
Net Debenture Debt.....	32,351,093
Value Municipality's Assets.....	49,000,000

Tax Rate, 19.50 mills.

Population, 425,407.

---

### City of Hamilton, Ont.

Assessed Value for Taxation.....	\$75,780,325
Exemptions not included above.....	13,080,555
General Debenture Debt.....	7,958,110
Less,—Sinking Fund.....	\$1,095,541
Waterworks Debentures.....	2,402,478
Electric Light Debentures....	505,000
	<hr/>
Net Debenture Debt.....	3,955,091
Local Improvement Debt.....	1,156,197
Value Municipality's Assets.....	14,155,535

Tax Rate, 21 mills.

Population, 100,808.

---

---

### City of Ottawa, Ont.

Assessed Value for Taxation.....	\$95,720,676
Exemptions not included above.....	29,716,250
General Debenture Debt.....	9,366,341
Less,—Sinking Fund.....	\$2,715,083
Waterworks Debentures.....	1,632,244
Electric Light Debentures.....	650,000
Net Debenture Debt.....	4,369,314
Local Improvement Debt.....	1,948,953
Value Municipality's Assets.....	15,543,704

Tax Rate, 14 mills.

Population, 95,570

---

### City of London, Ont.

Assessed Value for Taxation.....	\$32,957,562
Exemptions not included above.....	4,114,180
General Debenture Debt.....	5,533,564
Less,—Sinking Fund.....	\$366,161
Waterworks Debentures.....	937,859
Electric Light Debentures.....	465,420
London and Port Stanley Railway Debentures.....	700,000
Net Debenture Debt.....	3,064,124
Local Improvement Debt.....	312,955
Value Municipality's Assets.....	5,752,782

Tax Rate, 24.90 mills.

Population, 55,026.

---

---

---

---

### City of Brantford, Ont.

Assessed Value for Taxation.....	\$15,103,403	
Exemptions not included above.....	2,575,750	
General Debenture Debt.....	1,544,188	
Less,—Sinking Fund.....	\$ 574,636	
Waterworks Debentures.....	516,381	1,091,017
Net Debenture Debt.....		453,171
Local Improvement Debt.....		862,882
Value Municipality's Assets.....		950,342

Tax Rate, 23 mills.

Population, 26,654.

---

### City of Fort William, Ont.

Assessed Value for Taxation.....	\$25,167,925	
Exemptions not included above.....	2,005,940	
General Debenture Debt.....	4,572,128	
Less,—Sinking Fund.....	\$ 682,583	
Waterworks Debentures.....	1,220,912	
Electric Light Debentures.....	233,908	
Telephone Debentures.....	224,000	
Street Railway Debentures.....	320,000	3,181,403
Net Debenture Debt.....		1,390,725
Local Improvement Debt.....		1,529,020
Value Municipality's Assets.....		5,364,439

Tax Rate, 26 mills.

Population, 24,500.

---

---



---

---

### City of Peterboro, Ont.

Assessed Value for Taxation.....	\$10,535,622	
Exemptions not included above.....	1,859,010	
General Debenture Debt.....	1,513,990	
Less,—Sinking Fund.....	\$ 295,549	
Waterworks Debentures.....	502,000	
Electric Light Debentures.....	120,000	917,549
Net Debenture Debt.....		596,441
Local Improvement Debt.....		255,451
Value Municipality's Assets.....		1,928,516

Tax Rate, 25 mills.

Population, 22,000.

---

### City of Kingston, Ont.

Assessed Value for Taxation.....	\$10,411,097	
General Debenture Debt.....	1,128,673	
Less,—Sinking Fund.....	\$ 122,964	
Waterworks Debentures.....	182,000	
Electric Light Debentures.....	920,178	625,142
Net Debenture Debt.....		503,531
Local Improvement Debt.....		163,922
Value Municipality's Assets.....		1,369,085

Tax Rate, 23.50 mills.

Population, 21,015.

---

---

---

---

### City of Windsor, Ont.

Assessed Value for Taxation.....	\$16,423,525
Exemptions not included above.....	2,291,975
General Debenture Debt.....	665,681
Less,—Sinking Fund.....	\$ 102,645
Waterworks Debentures.....	180,170
	<hr/>
Net Debenture Debt.....	382,866
Local Improvement Debt.....	357,675
Value Municipality's Assets.....	2,158,325

Tax Rate, 22.50 mills.

Population, 19,877.

---

### City of Port Arthur, Ont.

Assessed Value for Taxation.....	\$23,277,680
Exemptions not included above.....	5,639,585
General Debenture Debt.....	5,411,876
Less,—Sinking Fund.....	\$ 454,810
Waterworks Debentures.....	1,716,855
Electric Light Debentures.....	160,000
Street Railway Debentures.....	874,184
Power Debentures.....	358,500
Telephone Debentures.....	262,500
	<hr/>
Net Debenture Debt.....	1,585,027
Local Improvement Debt.....	1,520,667
Value Municipality's Assets.....	5,000,000

Tax Rate, 23 mills.

Population, 18,025.

---

---

---

---

### City of Berlin, Ont.

Assessed Value for Taxation.....	\$ 8,891,583	
General Debenture Debt.....	1,371,343	
Less,—Waterworks Debentures.....	\$176,044	
Electric Light Debentures.....	429,515	
Street Railway Debentures.....	163,130	768,689
Net Debenture Debt.....		602,654
Local Improvement Debt.....		373,069
Value Municipality's Assets.....		1,936,742

Tax Rate, 21.75 mills.

Population, 16,917.

---

### City of Stratford, Ont.

Assessed Value for Taxation.....	\$8,051,505	
General Debenture Debt.....	948,750	
Less,—Sinking Fund.....	\$363,398	
Waterworks Debentures.....	197,695	
Electric Light Debentures.....	160,660	601,753
Net Debenture Debt.....		257,006
Local Improvement Debt.....		505,984
Value Municipality's Assets.....		840,000

Tax Rate, 27 mills.

Population, 16,425.

---

---

---

---

### City of Guelph, Ont.

Assessed Value for Taxation.....	\$8,565,288
Exemptions not included above.....	2,157,250
General Debenture Debt.....	1,440,120
Less,—Sinking Fund.....	\$385,750
Waterworks Debentures.....	168,930
Gas and Electric Light Debs. ....	290,000
Guelph Radial Railway Debs. ....	138,000
Guelph Junction Railway Debs. .	193,000
	<hr/>
Net Debenture Debt.....	264,440
Local Improvement Debt.....	587,221
Value Municipality's Assets.....	2,465,235

Tax Rate, 24 mills.

Population, 16,319.

---

### City of St. Thomas, Ont.

Assessed Value for Taxation.....	\$ 8,596,708
Exemptions not included above.....	2,061,620
General Debenture Debt.....	1,010,977
Less,—Sinking Fund.....	\$ 15,530
Waterworks Debentures.....	170,518
Electric Light Debentures .....	274,184
	<hr/>
Net Debenture Debt.....	550,745
Local Improvement Debt.....	238,420
Value Municipality's Assets.....	1,348,700

Tax Rate, 26.25 mills.

Population, 15,454.

---

---

---

---

**City of St. Catharines, Ont.**

Assessed Value for Taxation.....	\$11,481,705
Exemptions not included above.....	1,213,255
General Debenture Debt.....	1,872,566
Less,—Sinking Fund.....	\$320,778
Waterworks Debentures.....	586,800
	907,578
Net Debenture Debt.....	964,988
Local Improvement Debt.....	527,485
Value Municipality's Assets.....	2,279,336

Tax Rate, 22.50 mills.

Population, 14,741.

---

**City of Sault Ste. Marie, Ont.**

Assessed Value for Taxation.....	\$13,490,980
Exemptions not included above.....	861,840
General Debenture Debt.....	578,019
Less, Sinking Fund.....	103,251
Net Debenture Debt.....	474,768
Local Improvement Debt.....	229,808
Value Municipality's Assets.....	1,097,981

Tax Rate, 18 mills.

Population, 14,500.

---

---

### City of Chatham, Ont.

Assessed Value for Taxation.....	\$7,270,124
Exemptions not included above.....	527,708
Less,—Waterworks Debentures.....	\$96,021
Electric Light Debentures.....	16,521
	112,542
Net Debenture Debt.....	415,166
Local Improvement Debt.....	400,214
Value Municipality's Assets.....	1,350,403

Tax Rate, 32 mills.

Population, 12,139.

---

### City of Niagara Falls, Ont.

Assessed Valuation for Taxation.....	\$6,747,975
Exemptions not included above.....	526,800
General Debenture Debt.....	335,640
Less,—Waterworks Debentures.....	\$128,563
Electric Light Debentures.....	87,155
	215,718
Net Debenture Debt.....	119,922
Local Improvement Debt.....	490,698
Value Municipality's Assets.....	1,263,159

Tax Rate, 27.30 mills.

Population, 11,700.

---

---

---

---

### City of Belleville, Ont.

Assessed Value for Taxation.....	\$5,748,587
Exemptions not included above.....	1,341,585
General Debenture Debt.....	910,303
Less,—Sinking Fund.....	\$266,709
Waterworks Debentures.....	205,000
Gas Debentures.....	69,174
Net Debenture Debt.....	369,420
Local Improvement Debt.....	256,555
Value Municipality's Assets.....	1,413,263

Tax Rate, 26.50 mills.

Population, 11,201.

---

### City of Woodstock, Ont.

Assessed Value for Taxation.....	\$4,808,425
Exemptions not included above.....	1,150,300
General Debenture Debt.....	743,499
Less,—Sinking Fund.....	\$270,000
Waterworks Debentures.....	193,813
Electric Light Debentures.....	107,385
Net Debenture Debt.....	172,301
Local Improvement Debt.....	137,730
Value Municipality's Assets.....	995,918

Tax Rate, 21 mills.

Population, 10,154.

---

---

---

---

### Town of Owen Sound, Ont.

Assessed Value for Taxation.....	\$6,270,705	
Exemptions not included above.....	1,555,895	
General Debenture Debt.....	1,065,704	
Less,—Sinking Fund.....	\$296,880	
Waterworks Debentures.....	255,928	
Electric Light and Gas Debentures.....	280,000	832,808
Net Debenture Debt.....	232,896	
Local Improvement Debt.....	161,069	
Value Municipality's Assets.....	1,518,186	

Tax Rate, 28.50 mills.

Population, 12,612.

---

### Town of Galt, Ont.

Assessed Value for Taxation.....	\$6,676,878	
Exemptions not included above.....	382,370	
General Debenture Debt.....	1,179,539	
Less,—Sinking Fund.....	\$249,335	
Waterworks Debentures.....	276,355	
Electric Light Debentures.....	136,000	661,690
Net Debenture Debt.....	517,849	
Local Improvement Debt.....	148,012	
Value Municipality's Assets.....	1,161,951	

Tax Rate, 22 mills.

Population, 11,932.



---

---

**Town of Sarnia, Ont.**

Assessed Value for Taxation.....	\$5,430,553
Exemptions not included above.....	468,670
General Debenture Debt.....	575,146
Less,—Sinking Fund.....	\$ 9,346
Waterworks Debentures.....	338,059
	<hr/>
Net Debenture Debt.....	227,741
Local Improvement Debt.....	350,881
Value Municipality's Assets.....	1,012,848

Tax Rate, 22 mills.

Population, 10,866.

---

**Town of Brockville, Ont.**

Assessed Value for Taxation.....	\$4,038,255
Exemptions not included above.....	856,775
General Debenture Debt.....	636,135
Less,—Sinking Fund.....	\$197,795
Waterworks Debentures.....	216,604
Electric Light Debentures.....	146,399
	<hr/>
Net Debenture Debt.....	75,337
Local Improvement Debt.....	174,350
Value Municipality's Assets.....	825,275

Tax Rate, 20.35 mills.

Population, 9,678.

---

---

---

---

**Town of North Bay, Ont.**

Assessed Value for Taxation.....	\$5,530,959
Exemptions not included above.....	702,900
General Debenture Debt.....	708,085
Less, Waterworks Debentures.....	164,502
	<hr/>
Net Debenture Debt.....	543,583
Local Improvement Debt.....	209,825

Tax Rate, 19 mills.

Population, 8,762.

---

**Town of Oshawa, Ont.**

Assessed Value for Taxation.....	\$2,823,666
Exemptions not included above.....	173,150
General Debenture Debt.....	370,853
Less, Waterworks Debentures.....	132,893
	<hr/>
Net Debenture Debt.....	237,960
Local Improvement Debt.....	150,296

Tax Rate, 19.90 mills.

Population, 8,248.

---

---

---



---

### Town of Orillia, Ont.

Assessed Value for Taxation.....		\$3,296,000
General Debenture Debt.....		586,933
Less,—Sinking Fund.....	\$ 3,742	
Waterworks Debentures.....	26,263	
Electric Light Debentures.....	345,701	375,706
Net Debenture Debt.....		211,227

Tax Rate, 30 mills.

Population, 7,762.

---

### Town of Collingwood, Ont.

Assessed Value for Taxation.....		\$3,236,909
Exemptions not included above.....		475,000
General Debenture Debt.....		421,728
Less,—Sinking Fund.....	\$12,220	
Waterworks and Electric Light		
Debentures.....	58,835	71,055
Net Debenture Debt.....		350,673
Local Improvement Debt.....		115,433
Value Municipality's Assets.....		370,473

Population, 7,507.

---

---

**Town of Lindsay, Ont.**

Assessed Value for Taxation.....	\$2,971,950
Exemptions not included above.....	479,875
General Debenture Debt.....	385,567
Less,—Sinking Fund.....	\$ 1,881
Waterworks Debentures.....	87,070
	<hr/>
Net Debenture Debt.....	296,616
Local Improvement Debt.....	68,297
Value Municipality's Assets.....	314,771

Population, 7,302.

---

**Town of Pembroke, Ont.**

Assessed Value for Taxation.....	\$3,169,730
Exemptions not included above.....	495,395
General Debenture Debt.....	330,607
Less,—Sinking Fund.....	\$ 22,165
Waterworks Debentures.....	107,200
	<hr/>
Net Debenture Debt.....	201,242
Local Improvement Debt.....	24,833
Value Municipality's Assets.....	375,000

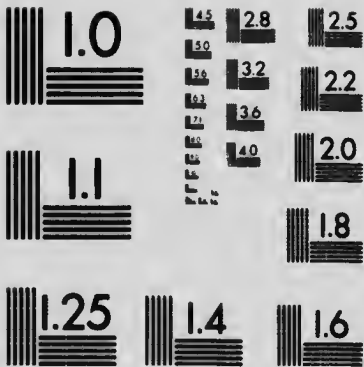
Tax Rate, 22.50 mills.

Population, 7,000.

---

---





**MICROCOPY RESOLUTION TEST CHART**  
**NATIONAL BUREAU OF STANDARDS**  
**STANDARD REFERENCE MATERIAL 1010a**  
**(ANSI and ISO TEST CHART No. 2)**

---

---

**Town of Smith's Falls, Ont.**

Assessed Value for Taxation.....	\$3,596,079
Exemptions not included above.....	332,100
General Debenture Debt.....	515,778
Less, Waterworks Debentures.....	141,792
Net Debenture Debt.....	373,986
Local Improvement Debt.....	136,152
Value Municipality's Assets.....	700,000

Tax Rate, 21.50 mills.

Population, 6,551.

---

**Town of Cornwall, Ont.**

Assessed Value for Taxation.....	\$2,008,138
Exemptions not included above.....	356,528
General Debenture Debt.....	219,523
Less, Waterworks Debentures.....	117,435
Net Debenture Debt.....	102,088
Local Improvement Debt.....	51,900
Value Municipality's Assets.....	280,000

Tax Rate, 28 mills.

Population, 6,500.

---

---

---

---

### Town of Kenora, Ont.

Assessed Value for Taxation.....	\$3,333,745
Exemptions not included above.....	900,000
General Debenture Debt.....	861,584
Less,—Sinking Fund.....	\$ 54,600
Waterworks Debentures.....	162,398
Electric Light, Telephone and Power Debentures.....	587,000
Net Debenture Debt.....	57,586
Local Improvement Debt.....	69,189
Value Municipality's Assets.....	987,966

Population, 6,500.

---

### Town of Sudbury, Ont.

Assessed Value for Taxation.....	\$2,584,533
Exemptions not included above.....	413,800
General Debenture Debt.....	300,139
Less, Waterworks Debentures.....	202,404
Net Debenture Debt.....	97,735
Local Improvement Debt.....	20,007
Value Municipality's Assets.....	465,593

Population, 6,470.



---

---

**Town of Barrie, Ont.**

Assessed Value for Taxation.....		\$3,871,076
Exemptions not included above.....		458,960
General Debenture Debt.....		361,121
Less,—Waterworks Debentures.....	\$78,019	
Electric Light Debentures.....	52,195	130,214
Net Debenture Debt.....		230,907
Local Improvement Debt.....		61,157
Value Municipality's Assets.....		444,803

Tax Rate, 22 mills.

Population, 6,460.

---

**Town of Midland, Ont.**

Assessed Value for Taxation.....		\$2,369,476
Exemptions not included above.....		280,100
General Debenture Debt.....		336,585
Less,—Waterworks Debentures.....	\$70,819	
Electric Light Debentures.....	47,008	117,827
Net Debenture Debt.....		218,758
Local Improvement Debt.....		53,315
Value Municipality's Assets.....		453,390

Tax Rate, 28 mills.

Population, 6,200.

---

---

---

---

**Town of Cobalt, Ont.**

Assessed Value for Taxation.....	\$2,180,243	
Exemptions not included above.....	79,600	
General Debenture Debt.....	176,000	
Less,—Sinking Fund.....	\$ 9,116	
Waterworks Debentures.....	125,000	134,116
Net Debenture Debt.....		41,884
Value Municipality's Assets.....		195,000

Tax Rate, 33.25 mills.

Population, 6,000.

---

**Town of Welland, Ont.**

Assessed Value for Taxation.....	\$4,177,525	
Exemptions not included above.....	767,790	
General Debenture Debt.....	390,808	
Less,—Sinking Fund.....	\$ 98,990	
Waterworks Debentures.....	172,500	
Electric Light Debentures.....	45,000	316,490
Net Debenture Debt.....		74,318
Local Improvement Debt.....		175,740
Value Municipality's Assets.....		651,175

Tax Rate, 25 mills.

Population, 6,000.

---

---

---

---

**Town of Steelton, Ont.**

Assessed Value for Taxation.....	\$2,486,671
Exemptions not included above.....	1,891,710
General Debenture Debt.....	168,609
Less,—Waterworks Debentures.....	\$77,421
Electric Light Debentures.....	30,000
	<hr/>
Net Debenture Debt.....	61,188
Local Improvement Debt.....	214,000
Value Municipality's Assets.....	311,260

Tax Rate, 20.10 mills.

Population, 5,346.

---

**Town of Cobourg, Ont.**

Assessed Value for Taxation.....	\$1,880,103
Exemptions not included above.....	678,900
General Debenture Debt.....	208,280
Less, Sinking Fund .....	11,754
	<hr/>
Net Debenture Debt.....	196,526
Local Improvement Debt.....	24,744
Value Municipality's Assets.....	308,867

Population, 5,213.

---

---

### Town of Ingersoll, Ont.

Assessed Value for Taxation.....	\$2,064,500
Exemptions not included above.....	110,000
General Debenture Debt.....	361,444
Less,—Sinking Fund.....	\$ 79,376
Waterworks Debentures.....	125,000
Electric Light Debentures.....	79,800
	<hr/>
Net Debenture Debt.....	77,268
Value Municipality's Assets.....	383,576

Population, 5,200.

---

### Town of Port Hope, Ont.

Assessed Value for Taxation.....	\$2,135,443
Exemptions not included above.....	199,400
General Debenture Debt.....	253,946
Less,—Sinking Fund.....	\$ 1,202
Waterworks Debentures.....	46,368
	<hr/>
Net Debenture Debt.....	206,376
Local Improvement Debt.....	33,455
Value Municipality's Assets.....	300,000

Population, 5,089.

---

---

**Town of Preston, Ont.**

Assessed Value for Taxation.....	\$2,537,837	
General Debenture Debt.....	322,000	
Less,—Waterworks Debentures.....	\$105,000	
Electric Light Debentures.....	58,000	163,000
Net Debenture Debt.....		159,000
Local Improvement Debt.....		52,000
Value Municipality's Assets.....		396,760

Tax Rate, 22 mills.

Population, 4,923.

---

**Town of Goderich, Ont.**

Assessed Value for Taxation.....	\$2,287,157	
General Debenture Debt.....	356,777	
Less,—Sinking Fund.....	\$ 50,397	
Waterworks and Electric Light Debentures.....	113,412	163,809
Net Debenture Debt.....		192,968
Local Improvement Debt.....		49,187
Value Municipality's Assets.....		517,220

Tax Rate, 30 mills.

Population, 4,906.

---

---

---

---

### Town of Waterloo, Ont.

Assessed Value for Taxation.....	\$3,314,003
Exemptions not included above.....	345,160
General Debenture Debt.....	287,911
Less,—Sinking Fund.....	\$ 3,916
Waterworks Debentures.....	72,331
Gas and Electric Light Debentures	93,907
	170,184
Net Debenture Debt.....	117,727
Value Municipality's Assets.....	516,916

Tax Rate, 21.10 mills.

Population, 4,737.

---

### Town of Dundas, Ont.

Assessed Value for Taxation.....	\$2,036,500
Exemptions not included above.....	1,713,150
General Debenture Debt.....	163,601
Less,—Waterworks Debentures.....	\$34,800
Electric Light Debentures.....	52,629
	87,429
Net Debenture Debt.....	76,172
Value Municipality's Assets.....	364,123

Tax Rate, 23.90 mills.

Population, 4,604.

---

---

---

---

**Town of Paris, Ont.**

Assessed Value for Taxation.....	\$1,696,242	
Exemptions not included above.....	229,950	
General Debenture Debt.....	118,926	
Less,—Sinking Fund.....	\$ 8,957	
Waterworks and Electric Light Debentures.....	48,068	57,025
Net Debenture Debt.....		61,901
Local Improvement Debt.....		21,100
Value Municipality's Assets.....		290,135

Tax Rate, 25 mills.

Population, 4,500.

---

**Town of Hawkesbury, Ont.**

Assessed Value for Taxation.....	\$995,641	
Exemptions not included above.....	201,500	
General Debenture Debt.....	273,778	
Less, Waterworks Debentures.....	115,660	
Net Debenture Debt.....		158,118
Local Improvement Debt.....		10,253
Value Municipality's Assets.....		205,000

Population, 4,374.

---

---

---

---

**Town of Renfrew, Ont.**

Assessed Value for Taxation.....	\$2,188,967
Exemptions not included above.....	470,015
General Debenture Debt.....	449,389
Less,—Waterworks Debentures.....	\$100,208
Power Debentures.....	182,660
Net Debenture Debt.....	166,521
Local Improvement Debt.....	57,868
Value Municipality's Assets.....	501,605

Tax Rate, 24.10 mills.

Population, 4,116.

---

**Town of Arnprior, Ont.**

Assessed Value for Taxation.....	\$1,250,507
Exemptions not included above.....	119,500
General Debenture Debt.....	237,449
Less, Sinking Fund.....	49,231
Net Debenture Debt.....	188,218
Local Improvement Debt.....	77,989
Value Municipality's Assets.....	400,000

Population, 4,100.



---

---

**Town of Trenton, Ont.**

Assessed Value for Taxation.....	\$1,824,559
Exemptions not included above.....	200,000
General Debenture Debt.....	167,059
Less, Water Power Debentures.....	57,267
Net Debenture Debt.....	109,792
Value Municipality's Assets.....	124,790

Tax Rate, 23 mills.

Population, 4,083.

---

**Town of Walkerville, Ont.**

Assessed Value for Taxation.....	\$6,497,504
Exemptions not included above.....	240,850
General Debenture Debt.....	361,069
Value Municipality's Assets.....	354,485

Tax Rate, 12.62 mills.

Population, 4,037.

---

---

---

---

**Town of Gananoque, Ont.**

Assessed Value for Taxation.....	\$1,510,095
General Debenture Debt.....	193,471
Less, Sinking Fund .....	26,191
<hr/>	
Net Debenture Debt.....	173,280
Local Improvement Debt.....	19,621
Value Municipality's Assets.....	327,615

Population, 4,000.

---

**Town of Wallaceburg, Ont.**

Assessed Value for Taxation.....	\$1,218,882
Exemptions not included above.....	117,050
General Debenture Debt.....	79,025
Local Improvement Debt.....	40,000
Value Municipality's Assets.....	223,744

Population, 4,000.

---

---

### Town of Brampton, Ont.

Assessed Value for Taxation.....	\$1,917,673
Exemptions not included above.....	150,000
General Debenture Debt.....	264,562
Less,—Waterworks Debentures.....	\$130,000
Electric Light Debentures.....	52,849
Net Debenture Debt.....	81,713
Local Improvement Debt.....	74,935
Value Municipality's Assets.....	437,811

Tax Rate, 23.22 mills.

Population, 4,000.

---

### Town of Perth, Ont.

Assessed Value for Taxation.....	\$1,370,775
Exemptions not included above.....	295,000
General Debenture Debt.....	180,150
Less,—Waterworks Debentures.....	\$10,000
Electric Light Debentures.....	9,500
Net Debenture Debt.....	160,650
Local Improvement Debt.....	39,470
Value Municipality's Assets.....	268,905

Population, 4,000.

---

---

---

---

**Town of Petrolia, Ont.**

Assessed Value for Taxation.....	\$1,301,820
Exemptions not included above.....	240,900
General Debenture Debt.....	207,339
Less, Waterworks Debentures.....	99,235
Net Debenture Debt.....	108,104
Local Improvement Debt.....	37,619
Value Municipality's Assets.....	325,942

Tax Rate, 29.50 mills.

Population, 3,988.

---

**Town of Carleton Place, Ont.**

Assessed Value for Taxation.....	\$1,310,456
Exemptions not included above.....	157,575
General Debenture Debt.....	224,878
Less, Waterworks and Sewerage Debentures.....	150,000
Net Debenture Debt.....	74,878
Local Improvement Debt.....	22,700
Value Municipality's Assets.....	81,300

Tax Rate, 30 mills.

Population, 3,891.

---

---

---

---

**Town of Simcoe, Ont.**

Assessed Value for Taxation.....	\$2,243,203
Exemptions not included above.....	170,655
General Debenture Debt.....	230,749
Less, Waterworks Debentures .....	67,598
Net Debenture Debt.....	163,151
Local Improvement Debt.....	12,783

Tax Rate, 19 mills.

Population, 3,810.

---

**Town of St. Mary's, Ont.**

Assessed Value for Taxation.....	\$1,833,728
General Debenture Debt.....	203,062
Less, Electric Light Debentures .....	8,892
Net Debenture Debt.....	194,170
Local Improvement Debt.....	33,786
Value Municipality's Assets.....	288,119

Tax Rate, 13.08 mills.

Population, 3,800.

---

---

---

---

**Town of Newmarket, Ont.**

Assessed Value for Taxation.....	\$1,226,753	
Exemptions not included above.....	67,000	
General Debenture Debt.....	109,407	
Less,—Waterworks Debentures.....	\$10,443	
Electric Light Debentures.....	10,387	20,830
Net Debenture Debt.....		88,577
Value Municipality's Assets.....		168,422

Population, 3,754.

---

**Town of Penetanguishene, Ont.**

Assessed Value for Taxation.....	\$1,046,882	
Exemptions not included above.....	607,300	
General Debenture Debt.....	195,406	
Less,—Sinking Fund.....	\$ 8,505	
Waterworks Debentures.....	51,071	
Electric Light Debentures.....	39,095	98,671
Net Debenture Debt.....		96,735
Local Improvement Debt.....		7,654
Value Municipality's Assets.....		221,303

Tax Rate, 36 mills.

Population, 3,701.

---

---

### Town of Leamington, Ont.

Assessed Value for Taxation.....	\$1,470,501	
Exemptions not included above.....	96,800	
General Debenture Debt.....	59,057	
Less,—Waterworks Debentures.....	\$14,847	
Gas Debentures.....	9,225	24,072
Net Debenture Debt.....		34,985
Local Improvement Debt.....		14,701
Value Municipality's Assets.....		150,000

Tax Rate, 10 mills.

Population, 3,652.

---

### Town of Bowmanville, Ont.

Assessed Value for Taxation.....	\$1,468,655	
General Debenture Debt.....	153,767	
Less,—Sinking Fund.....	\$ 20,862	
Waterworks Debentures.....	71,000	91,862
Net Debenture Debt.....		61,905
Local Improvement Debt.....		56,466
Value Municipality's Assets.....		161,914

Population, 3,519.

---

---

---

---

**Town of Parry Sound, Ont.**

Assessed Value for Taxation.....	\$1,481,661	
Exemptions not included above.....	197,525	
General Debenture Debt.....	159,785	
Less,—Waterworks Debentures.....	\$39,269	
Electric Light Debentures.....	45,606	84,875
Net Debenture Debt.....		74,910
Local Improvement Debt.....		4,473
Value Municipality's Assets.....		245,293

Tax Rate, 12.30 mills.

Population, 3,500.

---

**Town of Campbellford, Ont.**

Assessed Value for Taxation.....	\$1,038,010	
General Debenture Debt.....	151,557	
Less,—Waterworks Debentures.....	\$7,000	
Electric Light Debentures.....	8,535	15,535
Net Debenture Debt.....		136,022
Value Municipality's Assets.....		171,148

Population, 3,208.



---

---

**Town of Picton, Ont.**

Assessed Value for Taxation.....	\$1,798,820
General Debenture Debt.....	63,000
Value Municipality's Assets.....	152,127

Tax Rate, 24 mills.

Population, 3,200.

---

**Town of Hanover, Ont.**

Assessed Value for Taxation.....	\$749,174
Exemptions not included above.....	69,725
General Debenture Debt.....	87,587
Less, Waterworks Debentures.....	30,005
Net Debenture Debt.....	57,582
Local Improvement Debt.....	20,719
Value Municipality's Assets.....	122,064

Tax Rate, 32 mills.

Population, 3,183.

---

---

**Town of Walkerton, Ont.**

Assessed Value for Taxation .....		\$854,061
Exemptions not included above.....		290,600
General Debenture Debt.....		60,599
Less,—Sinking Fund.....	\$11,345	
Waterworks Debentures.....	20,539	31,882
Net Debenture Debt.....		28,717
Local Improvement Debt.....		24,080
Value Municipality's Assets.....		105,575

Population, 3,175.

---

**Town of Dunnville, Ont.**

Assessed Value for Taxation.....		\$1,558,050
General Debenture Debt.....		142,020
Less,—Sinking Fund.....	\$12,847	
Waterworks Debentures.....	31,587	44,434
Net Debenture Debt.....		97,586
Local Improvement Debt.....		37,500

Tax Rate, 25 mills.

Population, 3,134.

---

---

**Town of Strathroy, Ont.**

Assessed Value for Taxation.....	\$1,151,735
Exemptions not included above.....	164,090
General Debenture Debt.....	97,039
Less, Waterworks and Electric Light Debentures ..	50,858
	<hr/>
Net Debenture Debt.....	46,181
Local Improvement Debt.....	4,473
Value Municipality's Assets.....	107,350

Population, 3,116.

---

**Town of Haileybury, Ont.**

Assessed Value for Taxation.....	\$1,926,225
Exemptions not included above.....	359,000
General Debenture Debt.....	280,351
Less,—Sinking Fund.....	\$ 4,844
Waterworks Debentures.....	130,356
	<hr/>
Net Debenture Debt.....	145,151
Local Improvement Debt.....	68,218
Value Municipality's Assets.....	442,000

Tax Rate, 35 mills.

Population, 3,115.

---

---

### Town of Bracebridge, Ont.

Assessed Value for Taxation.....	\$853,000
Exemptions not included above.....	164,000
General Debenture Debt.....	165,445
Less,—Waterworks Debentures.....	\$43,466
Electric Light Debentures.....	83,035
Net Debenture Debt.....	38,944
Local Improvement Debt.....	27,669
Value Municipality's Assets.....	304,883

Tax Rate, 30 mills.

Population, 3,000.

---

### Town of Prescott, Ont.

Assessed Value for Taxation.....	\$1,320,927
General Debenture Debt.....	139,184
Less,—Waterworks Debentures.....	\$103,888
Electric Light Debentures.....	15,521
Net Debenture Debt.....	19,775
Local Improvement Debt.....	41,542
Value Municipality's Assets.....	239,861

Tax Rate, 27.50 mills.

Population, 3,000.

---

---

---

---

**Town of Thorold, Ont.**

Assessed Value for Taxation.....	\$758,220
Exemptions not included above.....	132,529
General Debenture Debt.....	131,920
Less, Waterworks Debentures.....	90,079
	<hr/>
Net Debenture Debt.....	41,841
Local Improvement Debt.....	3,351
Value Municipality's Assets.....	165,500

Population, 3,000.

---

**Town of Tillsonburg, Ont.**

Assessed Value for Taxation.....	\$1,417,985
Exemptions not included above.....	126,700
General Debenture Debt.....	145,441
Less,—Sinking Fund.....	\$30,202
Electric Light Debentures.....	31,000
	<hr/>
Net Debenture Debt.....	84,239
Local Improvement Debt.....	66,856
Value Municipality's Assets.....	154,085

Tax Rate, 13 mills.

Population, 3,000.

---

---

**Town of New Liskeard, Ont.**

Assessed Value for Taxation.....	\$1,273,714
Exemptions not included above.....	88,758
General Debenture Debt.....	139,374
Less, Waterworks Debentures .....	66,470
	<hr/>
Net Debenture Debt.....	72,904
Local Improvement Debt.....	31,443
Value Municipality's Assets.....	212,514

Tax Rate, 26 mills.

Population, 3,000.

---

**Town of Meaford, Ont.**

Assessed Value for Taxation.....	\$1,254,164
General Debenture Debt.....	218,492
Less,—Sinking Fund.....	\$ 662
Waterworks Debentures.....	23,690
	<hr/>
Net Debenture Debt.....	184,140
Local Improvement Debt.....	5,220
Value Municipality's Assets.....	160,619

Population, 3,000.

---

---

---

---

**Town of Napanee, Ont.**

Assessed Value for Taxation.....	\$1,355,487
General Debenture Debt.....	29,436
Local Improvement Debt.....	62,788
Value Municipality's Assets.....	148,759

Tax Rate, 29 mills.

Population, 2,893.

---

**Town of Sandwich, Ont.**

Assessed Value for Taxation.....	\$1,791,405
Exemptions not included above.....	539,200
General Debenture Debt.....	93,101
Less, Waterworks Debentures.....	12,252
Net Debenture Debt.....	80,849
Local Improvement Debt.....	78,252
Value Municipality's Assets.....	160,000

Tax Rate, 17.31 mills.

Population, 2,787.

---

---

### Town of Wingham, Ont.

Assessed Value for Taxation.....		\$842,894
General Debenture Debt.....		176,727
Less,—Sinking Fund.....	\$27,278	
Waterworks Debentures.....	43,135	
Electric Light Debentures.....	38,542	108,955
Net Debenture Debt.....		67,772
Local Improvement Debt.....		11,542
Value Municipality's Assets.....		201,778

Tax Rate, 26 mills.

Population, 2,619.

---

### Town of Hespeler, Ont.

Assessed Value for Taxation.....		\$1,389,030
General Debenture Debt.....		70,532
Less,—Waterworks Debentures.....	\$10,436	
Electric Light Debentures.....	18,004	28,440
Net Debenture Debt.....		42,092
Local Improvement Debt.....		13,891
Value Municipality's Assets.....		116,006

Tax Rate, 24.50 mills.

Population, 2,567.

---

---



---

---

**Town of Almonte, Ont.**

Assessed Value for Taxation.....		\$787,000
Exemptions not included above.....		200,845
General Debenture Debt.....		90,990
Less,—Sinking Fund.....	\$ 9,043	
Electric Light Debentures.....	33,765	42,808
Net Debenture Debt.....		48,182
Value Municipality's Assets.....		32,651

Tax Rate, 28 mills.

Population, 2,502.

---

**Town of Cochrane, Ont.**

Assessed Value for Taxation.....		\$882,905
Exemptions not included above.....		504,850
General Debenture Debt.....		149,091
Less,—Sinking Fund.....	\$ 3,914	
Waterworks Debentures.....	89,857	93,771
Net Debenture Debt.....		55,320
Value Municipality's Assets.....		175,000

Tax Rate, 23.50 mills.

Population, 2,500.

---

---

---

---

**Town of Oakville, Ont.**

Assessed Value for Taxation.....	\$1,568,085
Exemptions not included above.....	190,000
General Debenture Debt.....	189,226
Less,—Sinking Fund.....	\$ 7,714
Waterworks Debentures.....	55,000
Electric Light Debentures.....	35,000
	97,714
Net Debenture Debt.....	91,512
Value Municipality's Assets.....	195,118

Population, 2,500.

---

**Town of Amherstburg, Ont.**

Assessed Value for Taxation.....	\$734,490
General Debenture Debt.....	68,729
Less,—Waterworks Debentures.....	\$14,051
Electric Light Debentures.....	4,382
	18,433
Net Debenture Debt.....	50,296
Local Improvement Debt.....	52,800

Tax Rate, 29.50 mills.

Population, 2,500.

---

---

**Town of Aurora, Ont.**

Assessed Value for Taxation.....	\$940,000
General Debenture Debt.....	89,629
Less, Waterworks Debentures.....	13,817
Net Debenture Debt.....	75,812
Value Municipality's Assets.....	80,000

Tax Rate, Schools, 30.70 mills.

Population, 2,500.

---

**Town of Gravenhurst, Ont.**

Assessed Value for Taxation.....	\$533,847
Exemptions not included above.....	151,550
General Debenture Debt.....	158,659
Less,—Sinking Fund.....	\$ 2,504
Waterworks Debentures.....	27,000
Electric Light and Power Debentures.....	79,732
Net Debenture Debt.....	49,423
Value Municipality's Assets.....	181,540

Tax Rate, 35 mills.

Population, 2,500.

---

---

---

---

**Town of Whitby, Ont.**

Assessed Value for Taxation.....	\$1,085,356
Exemptions not included above.....	366,600
General Debenture Debt.....	177,417
Less, Waterworks Debentures.....	104,047
Net Debenture Debt.....	73,370
Local Improvement Debt.....	26,700
Value Municipality's Assets.....	193,369

Tax Rate, 31.67 mills.

Population, 2,429.

---

**Town of Alexandria, Ont.**

Assessed Value for Taxation.....	\$561,580
Total Debenture Debt.....	58,740
Value Municipality's Assets.....	95,937

Population, 2,357.

---

---

### Town of Orangeville, Ont.

Assessed Value for Taxation.....		\$946,670
Exemptions not included above.....		61,800
General Debenture Debt.....		53,222
Less,—Sinking Fund.....	\$16,178	
Waterworks Debentures.....	26,750	42,928
Net Debenture Debt.....		10,294
Local Improvement Debt.....		24,098
Value Municipality's Assets.....		72,208

Tax Rate, 27.50 mills.

Population, 2,323.

---

### Town of Deseronto, Ont.

Assessed Value for Taxation.....		\$1,022,154
Exemptions not included above.....		174,500
General Debenture Debt.....		125,190
Less,—Waterworks Debentures.....	\$21,390	
Gas Works and Pumping Station Debentures.....	45,516	66,906
Net Debenture Debt.....		58,284
Value Municipality's Assets.....		125,190

Tax Rate, 28.80 mills.

Population, 2,306.

---

---

---

---

**Town of Sturgeon Falls, Ont.**

Assessed Value for Taxation.....	\$1,534,778
Exemptions not included above.....	365,592
General Debenture Debt.....	130,869

Population, 2,271.

---

**Town of Aylmer, Ont.**

Assessed Value for Taxation.....	\$963,650
Exemptions not included above.....	92,075
General Debenture Debt.....	133,935
Less,—Sinking Fund.....	\$ 4,885
Waterworks Debentures.....	60,299
Electric Light Debentures.....	10,000
Net Debenture Debt.....	58,751
Local Improvement.....	17,509
Value Municipality's Assets.....	173,875

Population, 2,272.

---

---

**Town of Clinton, Ont.**

Assessed Value for Taxation.....		\$742,623
Exemptions not included above.....		120,000
General Debenture Debt.....		144,559
Less,—Sinking Fund.....	\$37,867	
Waterworks Debentures.....	59,000	
Electric Light Debentures.....	25,000	121,867
Net Debenture Debt.....		22,692
Local Improvement Debt.....		5,012
Value Municipality's Assets.....		150,229

Tax Rate, 27 mills.

Population, 2,250.

---

**Town of Kincardine, Ont.**

Assessed Value for Taxation.....		\$745,682
Exemptions not included above.....		54,500
General Debenture Debt.....		85,134
Less,—Sinking Fund.....	\$15,830	
Waterworks Debentures.....	24,142	
Electric Light Debentures.....	6,690	46,662
Net Debenture Debt.....		38,472
Local Improvement Debt.....		11,994
Value Municipality's Assets.....		196,904

Tax Rate, 12 mills.

Population, 2,250.

---

---

---

---

**Town of Mimico, Ont.**

Assessed Value for Taxation.....	\$625,000
General Debenture Debt.....	28,978
Less, Electric Light Debentures.....	13,000
	<hr/>
Net Debenture Debt.....	15,978
Local Improvement Debt.....	5,170
Value Municipality's Assets.....	30,000

Population, 2,200.

---

**Town of Weston, Ont.**

Assessed Value for Taxation.....	\$1,446,466
General Debenture Debt.....	207,189
Less,—Waterworks Debentures.....	\$79,800
Electric Light Debentures.....	18,821
	<hr/>
Net Debenture Debt.....	108,568
Value Municipality's Assets.....	277,800

Tax Rate, 22.50 mills.

Population, 2,200.



---

---

### Town of Fort Frances, Ont.

Assessed Value for Taxation.....	\$1,596,982	
General Debenture Debt.....	170,430	
Less,—Sinking Fund.....	\$11,338	
Waterworks Debentures.....	59,544	
Electric Light Debentures.....	9,691	80,573
Net Debenture Debt.....		89,857
Local Improvement Debt.....		39,911
Value Municipality's Assets.....		216,776

Tax Rate, 18 mills.

Population, 2,200.

---

### Town of Ridgetown, Ont.

Assessed Value for Taxation.....	\$679,227	
Exemptions not included above.....	85,000	
General Debenture Debt.....	83,627	
Less,—Waterworks Debentures.....	\$40,000	
Electric Light Debentures.....	10,500	50,500
Net Debenture Debt.....		33,127
Local Improvement Debt.....		2,417
Value Municipality's Assets.....		117,836

Tax Rate, 25.50 mills.

Population, 2,150.

---

---

---

---

**Town of Huntsville, Ont.**

Assessed Value for Taxation.....	\$569,454
General Debenture Debt.....	80,868

Population, 2,150.

---

**Town of Elmira, Ont.**

Assessed Value for Taxation.....	\$723,000
Exemptions not included above.....	69,000
General Debenture Debt.....	65,054
Less,—Waterworks Debentures.....	\$27,610
Electric Light Debentures.....	20,000
Net Debenture Debt.....	17,444
Local Improvement Debt.....	15,073
Value Municipality's Assets.....	69,925

Tax Rate, 17 mills.

Population, 2,100.

---

---

**Town of Merritton, Ont.**

Assessed Value for Taxation.....		\$702,689
Exemptions not included above.....		220,000
General Debenture Debt.....		44,177
Less,—Waterworks Debentures.....	\$15,828	
Electric Light Debentures.....	8,349	24,177
Net Debenture Debt.....		20,000
Value Municipality's Assets.....		177,753

Population, 2,091.

---

**Village of Burlington, Ont.**

Assessed Value for Taxation.....	\$1,038,844
Exemptions not included above.....	75,500
General Debenture Debt.....	109,943
Less, Waterworks Debentures.....	55,273
Net Debenture Debt.....	54,670
Local Improvement Debt.....	37,453

Tax Rate, 28 mills.

Population, 2,072.

---

---

**Town of Wiarton, Ont.**

Assessed Value for Taxation .....	\$797,291
Exemptions not included above.....	71,025
General Debenture Debt.....	140,808
Less, Waterworks Debentures.....	16,518
Net Debenture Debt.....	124,290
Local Improvement Debt.....	38,367
Value Municipality's Assets.....	170,620

Tax Rate, 31 mills.

Population, 2,029.

---

**Town of Port Colborne, Ont.**

Assessed Value for Taxation .....	\$981,000
General Debenture Debt.....	57,800
Less, Waterworks Debentures.....	39,200
Net Debenture Debt.....	18,600
Local Improvement Debt.....	11,600
Value Municipality's Assets.....	98,716

Population, 2,001.

---

---

**Town of Seaforth, Ont.**

Assessed Value for Taxation.....		\$837,489
Exemptions not included above.....		100,300
General Debenture Debt.....		101,989
Less,—Sinking Fund.....	\$59,106	
Electric Light Debentures.....	25,000	84,106
Net Debenture Debt.....		17,883
Local Improvement Debt.....		79,600
Value Municipality's Assets.....		220,007

Tax Rate, 29 mills.

Population, 2,000.

---

**Town of Thessalon, Ont.**

Assessed Value for Taxation.....		\$549,195
Exemptions not included above.....		100,160
General Debenture Debt.....		36,318
Less,—Sinking Fund.....	\$ 1,400	
Waterworks Debentures.....	10,678	
Electric Light Debentures.....	11,926	24,004
Net Debenture Debt.....		12,314
Local Improvement Debt.....		10,600
Value Municipality's Asset.....		92,354

Tax Rate, 28.25 mills.

Population, 2,000.

---

---

---

---

**Town of Milton, Ont.**

Assessed Value for Taxation.....		\$587,357
Exemptions not included above.....		20,900
General Debenture Debt.....		88,108
Less,—Waterworks Debentures.....	\$34,000	
Electric Light Debentures.....	28,000	62,000
Net Debenture Debt.....		26,108
Value Municipality's Assets.....		88,006

Tax Rate, 26 mills.

Population, 1,960.

---

**Town of Palmerston, Ont.**

Assessed Value for Taxation.....		\$588,923
General Debenture Debt.....		143,900
Less,—Sinking Fund.....	\$ 5,183	
Waterworks Debentures.....	42,580	
Electric Light Debentures.....	10,510	58,273
Net Debenture Debt.....		85,627
Value Municipality's Assets.....		97,000

Population, 1,865.

---

---

---

---

### Town of Mount Forest, Ont.

Assessed Value for Taxation.....	\$755,000
Exemptions not included above.....	13,000
General Debenture Debt.....	129,564
Less,—Sinking Fund.....	\$28,207
Waterworks Debentures.....	24,513
Electric Light Debentures.....	9,114
Net Debenture Debt.....	67,730
Local Improvement Debt.....	16,166
Value Municipality's Assets.....	89,000

Tax Rate, 28.50 mills.

Population, 1,842.

---

### Town of Bridgeburg, Ont.

Assessed Value for Taxation.....	\$1,272,002
Exemptions not included above.....	31,000
General Debenture Debt.....	50,772
Less, Waterworks Debentures.....	44,413
Net Debenture Debt.....	6,359
Local Improvement Debt.....	153,123
Value Municipality's Assets.....	71,200

Population, 1,783.

---

---

---

---

**Town of Blind River, Ont.**

Assessed Value for Taxation.....	\$510,289
General Debenture Debt.....	25,923
Less, Sinking Fund.....	3,780
	<hr/>
Net Debenture Debt.....	22,143
Value Municipality's Assets.....	27,000

Population, 1,783.

---

**Town of Mitchell, Ont.**

Assessed Value for Taxation.....	\$785,522
General Debenture Debt.....	51,058
Less,—Sinking Fund.....	\$10,097
Waterworks Debentures.....	12,855
Electric Light Debentures.....	15,780
	<hr/>
Net Debenture Debt.....	12,326
Local Improvement Debt.....	22,577
Value Municipality's Assets.....	57,000

Tax Rate, 21 mills.

Population, 1,776.



---

---

### Town of Chesley, Ont.

Assessed Value for Taxation.....	\$695,397
Exemptions not included above.....	161,800
General Debenture Debt.....	85,929
Less, Waterworks Debentures.....	36,745
Net Debenture Debt.....	48,484
Local Improvement Debt.....	28,255
Value Municipality's Assets.....	141,734

Population, 1,759.

---

### Town of Kingsville, Ont.

Assessed Value for Taxation.....	\$550,712
Exemptions not included above.....	41,000
General Debenture Debt.....	45,792
Less, Waterworks Debentures.....	16,243
Net Debenture Debt.....	29,479
Local Improvement Debt.....	10,381
Value Municipality's Assets.....	86,881

Tax Rate, 30 mills.

Population, 1,742.

---

---

**Village of Acton, Ont.**

Assessed Value for Taxation.....	\$461,029
Exemptions not included above.....	66,800
General Debenture Debt.....	39,055
Less, Electric Light Debentures.....	14,500
Net Debenture Debt.....	24,555
Local Improvement Debt.....	11,611
Value Municipality's Asset.....	59,893

Population, 1,717.

---

**Town of Rainy River, Ont.**

Assessed Value for Taxation.....	\$769,501
Exemptions not included above.....	61,640
General Debenture Debt.....	92,153
Less,—Sinking Fund.....	\$ 5,501
Waterworks Debentures.....	34,800
Net Debenture Debt.....	51,852
Local Improvement Debt.....	7,511
Value Municipality's Assets.....	121,294

Tax Rate, 22.77 mills.

Population, 1,700.

---

---

**Town of Niagara, Ont.**

Assessed Value for Taxation.....	\$666,977
Exemptions not included above.....	175,000
Total Debenture Debt.....	58,000
Value Municipality's Assets.....	125,000

Population, 1,684.

---

**Town of Dresden, Ont.**

Assessed Value for Taxation.....	\$484,317
Exemptions not included above.....	54,250
General Debenture Debt.....	48,739
Less,—Waterworks Debentures.....	\$16,000
Electric Light Debentures.....	7,859
	23,859
Net Debenture Debt.....	24,880
Local Improvement Debt.....	14,634
Value Municipality's Assets.....	64,000

Population, 1,652.

---

---

**Village of Fergus, Ont.**

Assessed Value for Taxation.....	\$562,030
General Debenture Debt.....	38,000
Value Municipality's Assets.....	39,000

Population, 1,621.

---

**Town of Durham, Ont.**

Assessed Value for Taxation.....	\$587,120
Exemptions not included above.....	48,455
General Debenture Debt.....	71,549
Value Municipality's Assets.....	50,168

Tax Rate, 24.60 mills.

Population, 1,600.

---

---

**Town of Harriston, Ont.**

Assessed Value for Taxation.....		\$597,529
Exemptions not included above.....		599,229
General Debenture Debt.....		88,584
Less,—Waterworks Debentures.....	\$34,473	
Electric Light Debentures.....	11,000	45,473
Net Debenture Debt.....		43,111
Local Improvement Debt.....		12,364
Value Municipality's Assets.....		104,562

Tax Rate, 28 mills.

Population, 1,600.

---

**Town of Uxbridge, Ont.**

Assessed Value for Taxation.....		\$512,420
Exemptions not included above.....		103,100
General Debenture Debt.....		64,052
Less, Waterworks Debentures.....		6,218
Net Debenture Debt.....		57,834
Local Improvement Debt.....		10,619
Value Municipality's Assets.....		90,000

Tax Rate, 22 mills.

Population, 1,600.

---

---

---

---

### Village of New Hamburg, Ont.

Assessed Value for Taxation.....	\$642,019
Exemptions not included above.....	85,000
General Debenture Debt.....	38,118
Less, Electric Light Debentures .....	17,445
Net Debenture Debt.....	20,673
Local Improvement Debt.....	4,466
Value Municipality's Assets.....	64,011

Tax Rate, 22 mills.

Population, 1,586.

---

### Village of Morrisburg, Ont.

Assessed Value for Taxation.....	\$637,516
Exemptions not included above.....	38,300
General Debenture Debt.....	110,000
Value Municipality's Assets.....	175,000

Tax Rate, 25 mills.

Population, 1,571.

---

---

**Town of Blenheim, Ont.**

Assessed Value for Taxation.....	\$460,904
Exemptions not included above.....	63,600
General Debenture Debt.....	3,256
Local Improvement Debt.....	11,311
Value Municipality's Assets.....	61,460

Tax Rate, 24.80 mills.

Population, 1,500.

---

**Village of Grimsby, Ont.**

Assessed Value for Taxation.....	\$795,663
General Debenture Debt.....	98,003
Less, Waterworks Debentures.....	39,433
Net Debenture Debt.....	58,570
Local Improvement Debt.....	15,953
Value Municipality's Assets.....	136,883

Population, 1,487.

---

---

---

---

**Town of Forest, Ont.**

Assessed Value for Taxation.....	\$591,389
General Debenture Debt.....	42,403
Less, Electric Light Debentures.....	20,000
	<hr/>
Net Debenture Debt.....	22,403
Local Improvement Debt.....	2,110
Value Municipality's Assets.....	49,224

Tax Rate, 30 mills.

Population, 1,483.

---

**Town of Brighton, Ont.**

Assessed Value for Taxation.....	\$580,000
General Debenture Debt.....	50,000
Less, Waterworks Debentures.....	50,000
	<hr/>
Net Debenture Debt.....	Nil.

Tax Rate, 18.50 mills.

Population, 1,400.

---

---



---

---

**Village of Alliston, Ont.**

Assessed Value for Taxation.....	\$513,000
Exemptions not included above.....	44,000
General Debenture Debt.....	49,000
Local Improvement Debt.....	20,000

Population, 1,353.

---

**Town of Stayner, Ont.**

Assessed Value for Taxation.....	\$319,887
Exemptions not included above.....	52,555
General Debenture Debt.....	28,229
Less,—Waterworks Debentures.....	\$16,172
Electric Light Debentures.....	9,000
Net Debenture Debt.....	3,057
Local Improvement Debt.....	5,687
Value Municipality's Assets.....	65,000

Tax Rate, 25 mills.

Population, 1,000.

---

---

**County of Brant, Ont.**

Assessed Value for Taxation.....	\$10,717,528
General Debenture Debt.....	9,202
Value Municipality's Assets.....	133,771

Area 215,547 acres.

Population, 19,107.

---

**County of Bruce, Ont.**

Assessed Value for Taxation.....	\$28,340,649
General Debenture Debt.....	122,429
Value Municipality's Assets.....	160,351

Tax Rate, 3 mills.

Area, 1,009,996 acres.

Population, 50,134.

---

---

**County of Carleton, Ont.**

Assessed Value for Taxation.....	\$12,675,184
General Debenture Debt.....	155,000
Less, Sinking Fund.....	47,224
Net Debenture Debt.....	107,776
Value Municipality's Assets.....	358,835

Area, 563,243 acres.

Population, 28,000.

---

**County of Dufferin, Ont.**

Assessed Value for Taxation.....	\$1,641,927
General Debenture Debt.....	Nil.
Value Municipality's Assets.....	46,000

Area, 431,290 acres.

Population, 13,078.

---

---

**County of Elgin, Ont.**

Assessed Value for Taxation.....	\$23,288,315
General Debenture Debt.....	46,695
Value Municipality's Assets.....	185,000

Area, 436,383 acres.

Population, 31,309.

---

**County of Essex, Ont.**

Assessed Value for Taxation.....	\$32,991,000
General Debenture Debt.....	41,484
Value Municipality's Assets.....	33,100

Tax Rate, 1.90 mills.

Area, 422,823 acres.

Population, 42,555.

---

---

**County of Frontenac, Ont.**

Assessed Value for Taxation.....	\$6,342,145
General Debenture Debt.....	34,000
Value Municipality's Assets.....	125,000

Area, 697,871 acres.

Population, 19,600.

---

**County of Grey, Ont.**

Assessed Value for Taxation.....	\$33,186,100
General Debenture Debt.....	55,000
Less, Sinking Fund.....	6,400
Net Debenture Debt.....	48,600
Value Municipality's Assets.....	124,000

Tax Rate, 1.70 mills.

Assessed Area, 1,074,877 acres.

Population, 62,277.

---

---

**County of Haldimand, Ont.**

Assessed Value for Taxation.....	\$11,483,780
General Debenture Debt.....	118,052
Value Municipality's Assets.....	171,787

Area, 283,005 acres.

Population, 14,000.

---

**County of Haliburton, Ont.**

Assessed Value for Taxation.....	\$1,271,617
General Debenture Debt.....	Nil
Value Municipality's Assets.....	9,122

Tax Rate, 4 mills.

Area, 587,735 acres.

Population, 5,814.

---

---

**County of Halton, Ont.**

Assessed Value for Taxation.....	\$13,082,038
General Debenture Debt.....	287,307
Value Municipality's Assets.....	69,600

Area, 250,000 acres.

Population, 22,000.

---

**County of Hastings, Ont.**

Assessed Value for Taxation.....	\$17,407,400
General Debenture Debt.....	291,758

Tax Rate, 3.50 mills.

Area, 1,071,518 acres.

Population, 37,716.

---

---

**County of Huron, Ont.**

Assessed Value for Taxation.....	\$42,501,400
General Debenture Debt.....	113,000
Value Municipality's Assets.....	89,491

Tax Rate, 1.90 mills.

Area, 798,183 acres.

Population, 36,088.

---

**County of Kent, Ont.**

Assessed Value for Taxation.....	\$32,168,762
General Debenture Debt.....	9,216
Value Municipality's Assets.....	235,000

Tax Rate, 1.40 mills.

Area, 570,253 acres.

Population, 40,641.



---

---

**County of Lambton, Ont.**

Assessed Value for Taxation.....	\$34,830,303
General Debenture Debt.....	23,000
Value Municipality's Assets.....	132,000

Area, 670,040 acres.

Population, 48,000.

---

**County of Lanark, Ont.**

Assessed Value for Taxation.....	\$13,696,593
General Debenture Debt.....	112,000
Value Municipality's Assets.....	101,000

Tax Rate, 2.70 mills.

Area, 669,863 acres.

Population, 26,745.

---

---

### **Counties of Leeds and Grenville, Ont.**

Assessed Value for Taxation.....	\$18,267,401
General Debenture Debt.....	184,616
Less, Sinking Fund.....	15,122
Net Debenture Debt.....	169,494
Value Municipalities' Assets .....	144,992

Area, 770,000 acres.

Population, 38,251.

---

### **Counties of Lennox and Addington, Ont.**

Assessed Value for Taxation.....	\$8,437,026
General Debenture Debt.....	30,545
Value Municipalities' Assets .....	91,318

Area, 445,867 acres.

Population, 15,466.

---

---

**County of Lincoln, Ont.**

Assessed Value for Taxation.....	\$10,316,685
Exemptions not included above.....	2,943,748
General Debenture Debt.....	19,000
Value Municipality's Assets.....	158,059

Area, 193,219 acres.

Population, 33,307.

---

**County of Middlesex, Ont.**

Assessed Value for Taxation.....	\$39,226,561
General Debenture Debt.....	471,260
Less, Sinking Fund.....	150,976
Net Debenture Debt.....	320,284

Area, 757,565 acres.

Population, 45,661.

---

---

**County of Norfolk, Ont.**

Assessed Value for Taxation.....	\$2,497,171
General Debenture Debt.....	Nil
Value Municipality's Assets.....	69,000

Tax Rate, 2.50 mills.

Area, 403,684 acres.

Population, 26,169.

---

**Counties of Northumberland and Durham, Ont.**

Assessed Value for Taxation.....	\$29,166,332
General Debenture Debt.....	91,550
Less, Sinking Fund.....	23,420
Net Debenture Debt.....	68,130
Value Municipality's Assets.....	180,134

Tax Rate, 2 mills.

Area, 800,799 acres.

Population, 56,466.

---

---

**County of Ontario, Ont.**

Assessed Value for Taxation.....\$17,136,052  
General Debenture Debt..... 45,559

Area, 515,674 acres.

Population, 24,228.

---

**County of Oxford, Ont.**

Assessed Value for Taxation.....\$29,094,993  
General Debenture Debt..... 259,277  
Value Municipality's Assets..... 250,000

Area, 472,555 acres.

Population, 25,931.

---

---

**County of Peel, Ont.**

Assessed Value for Taxation.....	\$13,798,000
General Debenture Debt.....	280,000
Value Municipality's Assets.....	99,282

Area, 288,677 acres.

Population, 20,500.

---

**County of Perth, Ont.**

Assessed Value for Taxation.....	\$32,764,100
General Debenture Debt.....	129,393
Less, Sinking Fund.....	69,000
Net Debenture Debt.....	60,393
Value Municipality's Assets.....	140,000

Area, 540,335 acres.

Population, 30,546.

---

---

**County of Peterborough, Ont.**

Assessed Value for Taxation.....	\$8,964,005
General Debenture Debt.....	119,440
Value Municipality's Assets.....	213,627

Tax Rate, 3.50 mills.

Area, 600,000 acres.

Population, 19,468.

---

**Counties of Prescott and Russell, Ont.**

Assessed Value for Taxation.....	\$13,400,000
General Debenture Debt.....	50,907
Value Municipalities' Assets.....	108,936

Area, 542,523 acres.

Population, 33,900.

---

---

**County of Prince Edward, Ont.**

Assessed Value for Taxation.....	\$12,000,000
General Debenture Debt.....	188,540
Value Municipality's Assets.....	296,533

Tax Rate, 3.30 mills.

Area, 233,668 acres.

Population, 20,000.

---

**County of Renfrew, Ont.**

Assessed Value for Taxation.....	\$18,525,349
General Debenture Debt.....	29,494
Value Municipality's Assets.....	39,621

Tax Rate, 1.90 mills.

Area, 1,047,713 acres.

Population, 47,550.



---

---

**County of Simcoe, Ont.**

Assessed Value for Taxation.....	\$49,501,146
General Debenture Debt.....	76,060
Value Municipality's Assets.....	139,195

Area, 1,000,000 acres.

Population, 82,000.

---

**United Counties Stormont, Dundas and  
Glengarry, Ont.**

Assessed Value for Taxation.....	\$24,988,764
Exemptions not included above.....	1,102,490
General Debenture Debt..	50,700
Value Municipalities' Assets .....	191,515

Tax Rate, 1  $\frac{3}{4}$  mills.

Area, 770,041 acres.

Population, 59,439.

---

---

**County of Victoria, Ont.**

Assessed Value for Taxation. ....	\$16,112,550
General Debenture Debt.....	67,190
Less, Sinking Fund.....	14,629
Net Debenture Debt .....	52,561
Value Municipality's Assets.....	154,330

Tax Rate, 2.70 mills.

Area, 601,481 acres.

Population, 27,580.

---

**County of Waterloo, Ont.**

Assessed Value for Taxation. ....	900,000
General Debenture Debt.....	26,643
Value Municipality's Assets.....	90,000

Area, 317,945 acres.

Population, 64,911.

---

---

**County of Welland, Ont.**

Assessed Value for Taxation.....	\$15,785,700
General Debenture Debt.....	100,000
Value Municipality's Assets.....	131,650

Area, 225,648 acres.

Population, 29,547.

---

**County of Wellington, Ont.**

Assessed Value for Taxation.....	\$29,710,356
General Debenture Debt.....	20,000
Value Municipality's Assets.....	148,155

Area, 639,393 acres.

Population, 38,496.

---

---

**County of Wentworth, Ont.**

Assessed Value for Taxation.....	\$14,295,127
General Debenture Debt.....	129,716
Value Municipality's Assets.....	317,338

Area, 269,727 acres.

Population, 28,000.

---

**County of York, Ont.**

Assessed Value for Taxation.....	\$40,024,875
General Debenture Debt.....	163,801
Less, Sinking Fund.....	5,352
Net Debenture Debt.....	158,449
Value Municipality's Assets.....	141,700

Area, 541,016 acres.

Population, 60,050.

B  
1

---

---

## Province of Manitoba

Area . . . . .	251,832 square miles
Area under cultivation	10,000 square miles
Population, 1911 . . . . .	455,869
1901 . . . . .	255,211
Funded Debt . . . . .	\$16,955,000
Annual Dominion Government	
Subsidy . . . . .	\$1,349,895
Total Provincial Assets . . . .	\$52,564,962



---

---

### City of Winnipeg, Man.

Assessed Value for Taxation .....	\$259,419,520
Exemptions not included above .....	40,279,460
General Debenture Debt .....	24,600,086
Less,—Sinking Fund .....	\$3,779,970
Waterworks Debentures .....	6,579,986
Water Power Debentures .....	6,542,000
Net Debenture Debt .....	7,698,130
Local Improvement Debt .....	12,486,641
Value Municipality's Assets .....	32,883,847

Tax Rate, 13 mills.

Population, 184,730.

---

### Winnipeg School District, Man.

Assessed Value for Taxation .....	\$260,000,000
General Debenture Debt .....	3,000,000
Less, Sinking Fund .....	241,000
Net Debenture Debt .....	2,759,000
Value Municipality's Assets .....	5,000,000

Population, 185,000.



---

---

**City of Brandon, Man.**

Assessed Value for Taxation.....	\$15,238,844	
Exemptions not included above.....	3,390,971	
General Debenture Debt.....	2,077,836	
Less, Sinking Fund .....	\$ 350,000	
Waterworks Debentures.....	755,000	
Street Railway Debentures.....	450,000	1,555,000
Net Debenture Debt.....	522,836	
Local Improvement Debt.....	855,000	
Value Municipality's Assets.....	2,372,894	

Tax Rate, 26 mills.

Population, 17,280.

---

**Brandon School District, Man.**

Assessed Value for Taxation.....	\$13,921,190	
General Debenture Debt.....	406,000	
Less, Sinking Fund .....	82,515	
Net Debenture Debt.....	373,485	
Value Municipality's Assets.....	450,000	

Tax Rate, 7 mills.

Area, 5,760 acres.

Population, 18,000.

---

---

**City of St. Boniface, Man.**

Assessed Value for Taxation.....	\$17,538,090	
Exemptions not included above.....	639,300	
General Debenture Debt.....	1,068,894	
Less,—Sinking Fund.....	\$ 85,340	
Waterworks Debentures.....	500,000	585,340
Net Debenture Debt.....	483,554	
Local Improvement Debt.....	1,972,073	
Value Municipality's Assets.....	3,123,661	

Tax Rate, 17.25 mills.

Population, 11,405.

---

**St. Boniface School District, Man.**

Assessed Value for Taxation.....	\$18,177,390
General Debenture Debt.....	254,500
Value Municipality's Assets.....	400,000

Area is Co-Terminus with City of St. Boniface.

Tax Rate, 8.25 mills.

Population, 11,045.

---

---

**Rural Municipality of Assiniboia, Man.**

Assessed Value for Taxation.....	\$15,280,344
Exemptions not included above.....	312,000
Total Debenture Debt.....	844,000
Value Municipality's Assets.....	95,000

Tax Rate, 2.90 mills.

Area, 26,908 acres.

Population, 8,500.

---

**Rural Municipality of Kildonan, Man.**

Assessed Value for Taxation.....	\$6,302,268
General Debenture Debt.....	62,518
Less, Sinking Fund.....	5,136
Net Debenture Debt.....	57,382
Local Improvement Debt.....	40,000
Value Municipality's Assets.....	105,170

Tax Rate, 5 mills.

Area 16,140 acres.

Population, 6,000.

---

---

**City of Portage la Prairie, Man.**

Assessed Value for Taxation.....	\$4,460,525
Exemptions not included above.....	1,508,087
General Debenture Debt.....	836,338
Less,—Sinking Fund.....	\$ 66,984
Waterworks Debentures.....	474,338
Electric Light Debentures.....	110,000
	<hr/>
Net Debenture Debt.....	185,016
Local Improvement Debt.....	93,700
Value Municipality's Assets.....	1,047,260

Tax Rate, 25 mills.

Population, 6,343.

---

**Portage la Prairie School District, Man.**

Assessed Value for Taxation... ..	\$4,370,988
General Debenture Debt.....	64,465

Area, 5.691 acres.

Population, 6,400.

---

---

**Town of Dauphin, Man.**

Assessed Value for Taxation.....	\$2,381,275
Exemptions not included above.....	272,195
General Debenture Debt.....	437,940
Less,—Waterworks Debentures.....	\$345,457
Electric Light Debentures.....	55,218
	<hr/>
Net Debenture Debt.....	37,265
Local Improvement Debt.....	177,280
Value Municipality's Assets.....	465,349

Tax Rate, 26 mills.

Population, 4,660.

---

**Dauphin School District, Man.**

Assessed Value for Taxation.....	\$2,905,998
General Debenture Debt.....	87,853
Value Municipality's Assets.....	149,353

Tax Rate, 15 mills.

Area, 13,920 acres.

Population, 4,516.

---

---

### **Rural Municipality of Springfield, Man.**

Assessed Value for Taxation.....	\$3,926,170
Exemptions not included above.....	478,645
General Debenture Debt.....	Nil.
Value Municipality's Assets.....	99,703

Tax Rate, 8 mills.

Area, 390,000 acres.

Population, 3,538.

---

### **Rural Municipality of Fort Garry, Man.**

Assessed Value for Taxation.....	\$9,002,500
General Debenture Debt.....	42,606
Local Improvement Debt.....	125,000
Value Municipality's Assets.....	112,410

Area, 16,900 acres.

Population, 3,000.

---

---

### **Rural Municipality of Rosser, Man.**

Assessed Value for Taxation.....	\$4,328,309
Exemptions not included above.....	100,000
General Debenture Debt.....	125,000
Local Improvement Debt.....	21,000
Value Municipality's Assets.....	26,000

Area, 106,000 acres.

Population, 3,000.

---

### **Rural Municipality of Macdonald, Man.**

Assessed Value for Taxation.....	\$951,000
General Debenture Debt.....	47,000
Less, Telephone Debentures.....	40,000
Net Debenture Debt.....	7,000
Value Municipality's Assets.....	60,000

Tax Rate, 38 mills.

Area, 274,312 acres.

Population, 2,872.

---

---

### Town of Selkirk, Man.

Assessed Value for Taxation.....	\$2,840,886
Exemptions not included above.....	900,455
General Debenture Debt.....	158,270
Less,—Sinking Fund.....	\$ 3,710
Waterworks Debentures.....	68,500
Electric Light Debentures.....	23,000
	<hr/>
Net Debenture Debt.....	63,060
Local Improvement Debt.....	119,500
Value Municipality's Assets.....	345,271

Tax Rate, 19 mills.

Population, 3,500.

---

### Municipality of St. Vital, Man.

Assessed Value for Taxation.....	\$6,326,135
General Debenture Debt.....	20,000
Less, Sinking Fund.....	10,226
	<hr/>
Net Debenture Debt.....	9,774
Local Improvement Debt.....	48,779
Value Municipality's Assets.....	103,703

Area, 11,695 acres.

Population, 2,500.



---

---

**Town of Virden, Man.**

Assessed Value for Taxation.....	\$829,400
Exemptions not included above.....	191,800
General Debenture Debt.....	39,040
Less, Gas Debentures.....	4,000
	<hr/>
Net Debenture Debt.....	35,040
Local Improvement Debt.....	18,657
Value Municipality's Assets.....	111,916

Tax Rate, 25.80 mills.

Population, 2,500.

---

**Town of Neepawa, Man.**

Assessed Value for Taxation.....	\$1,179,136
Exemptions not included above.....	234,050
General Debenture Debt.....	209,000
Less, Sinking Fund.....	\$ 4,945
Waterworks Debentures.....	145,000
Electric Light Debentures.....	37,000
	<hr/>
Net Debenture Debt.....	22,055
Local Improvement Debt.....	75,309
Value Municipality's Assets.....	207,311

Tax Rate, 18 mills.

Population, 2,400.

---

---

---

---

**Town of Souris, Man.**

Assessed Value for Taxation.....	\$1,162,440
General Debenture Debt.....	172,701
Less, Waterworks Debentures.....	92,069
	<hr/>
Net Debenture Debt.....	80,632
Local Improvement Debt.....	61,474
Value Municipality's Assets.....	194,054

Tax Rate, 17.50 mills.

Population, 2,300.

---

**Town of Minnedosa, Man.**

Assessed Value for Taxation.....	\$1,128,440
Exemptions not included above.....	428,100
General Debenture Debt.....	66,000
Less, Sinking Fund.....	1,250
	<hr/>
Net Debenture Debt.....	64,750
Local Improvement Debt.....	25,000
Value Municipality's Assets.....	30,000

Tax Rate, 19.50 mills.

Population, 2,000.

---

---

---

---

**Municipality of St. Andrews, Man.**

Assessed Value for Taxation.....	\$2,795,482
General Debenture Debt.....	18,000
Local Improvement Debt.....	11,500
Value Municipality's Assets.....	23,510

Tax Rate, 11.70 mills.

Area, 181,346 acres.

Population, 1,738.

---

**Town of Carman, Man.**

Assessed Value for Taxation.....	\$711,149
Exemptions not included above.....	100,000
General Debenture Debt.....	82,779
Less,—Waterworks Debentures.....	\$61,717
Electric Light Debentures.....	21,062
Net Debenture Debt.....	Nil.
Value Municipality's Assets.....	100,000

Tax Rate, 92 mills.

Population, 1,500.

---

---

**Town of Morden, Man.**

Assessed Value for Taxation.....	\$571,000
Exemptions not included above.....	101,240
General Debenture Debt .....	15,013
Less, Electric Light Debentures .....	9,168
Net Debenture Debt.....	5,845
Local Improvement Debt.....	8,663

Tax Rate, 26.50 mills.

Population, 1,306.

---

**Town of Stonewall, Man.**

Assessed Value for Taxation.....	\$549,750
General Debenture Debt.....	10,000

Tax Rate, 20.10 mills.

Population, 1,200.

---

---

**Town of Killarney, Man.**

Assessed Value for Taxation.....	\$638,690
General Debenture Debt.....	13,340
Less, Electric Light Debentures .....	1,500
Net Debenture Debt.....	11,840
Local Improvement Debt.....	8,422

Population, 1,200.

---

**Town of Emerson, Man.**

Assessed Value for Taxation.....	\$400,000
General Debenture Debt.....	30,000
Value Municipality's Assets .....	15,000

Tax Rate, 18 mills.

Population, 1,075.

---

---

## Province of Saskatchewan

Area . . . . .	250,650 square miles
Area under cultivation	25,000 square miles
Population, 1911 . . . . .	492,432
1901 . . . . .	91,279
Funded Debt . . . . .	\$12,133,000
Annual Dominion Government	
Subsidy . . . . .	\$1,551,820



---

---

**City of Regina, Sask.**

Assessed Value for Taxation.....	\$72,428,027
Exemptions not included above.....	19,174,818
General Debenture Debt.....	7,428,234
Less,—Sinking Fund.....	\$ 285,586
Waterworks Debentures.....	1,251,329
Electric Light Debentures.....	1,085,111
Street Railway Debentures.....	1,475,000
	<hr/>
Net Debenture Debt.....	3,330,909
Local Improvement Debt.....	1,048,186
Value Municipality's Assets.....	16,885,498

Tax Rate, 15 mills.

Population, 45,000.

---

**Regina School District, Sask.**

Assessed Value for Taxation.....	\$64,864,007
General Debenture Debt.....	1,057,283
Value School District's Assets.....	1,200,000

Tax Rate, 3 mills.

Area, 7,850 acres.

Population, 48,000.



---

---

**City of Moose Jaw, Sask.**

Assessed Value for Taxation.....	\$51,839,892
Exemptions not included above.....	10,936,957
General Debenture Debt.....	4,676,434
Less,—Sinking Fund.....	\$ 105,229
Waterworks and Sewerage Debentures.....	1,541,485
Electric Light Debentures.....	702,625
Net Debenture Debt.....	2,327,095
Local Improvement Debt.....	709,988
Value Municipality's Assets.....	8,341,068

Tax Rate, 16.60 mills.

Population, 30,000.

---

**Moose Jaw School District, Sask.**

Assessed Value for Taxation (approximately).....	\$50,000,000
General Debenture Debt.....	529,200
Value School District's Assets.....	1,104,600

Tax Rate, 3.60 mills.

Area, 4,800 acres.

Population, 35,000.

---

---

### City of Saskatoon, Sask.

Assessed Value for Taxation.....	\$55,851,985	
Exemptions not included above.....	3,630,995	
General Debenture Debt.....	6,116,855	
Less,—Sinking Fund.....	\$ 177,965	
Waterworks Debentures.....	586,903	
Electric Light and Power Debentures.....	1,047,000	1,811,868
Net Debenture Debt.....	4,304,987	
Local Improvement Debt.....	1,573,233	
Value Municipality's Assets.....	8,520,127	

Tax Rate, 18 mills.

Population, 27,527.

---

### Saskatoon School District, Sask.

Assessed Value for Taxation (estimated).....	\$52,500,000	
Exemptions not included above.....	3,000,000	
General Debenture Debt.....	1,245,946	
Value School District's Assets.....	1,783,000	

Tax Rate, 4 mills.

Area, 22,840 acres.

Population, 30,000.

---

---

### City of Prince Albert, Sask.

Assessed Value for Taxation.....	\$29,454,018
Exemptions not included above.....	2,213,695
General Debenture Debt.....	2,753,338
Less,—Sinking Fund.....	\$ 44,109
Waterworks Debentures.....	513,539
Electric Light Debentures.....	466,592
Water Power Debentures.....	775,000
	1,799,240
Net Debenture Debt.....	954,098
Local Improvement Debt.....	516,379
Value Municipality's Assets.....	3,583,498

Tax Rate, 12.80 mills.

Population, 15,000.

---

### Prince Albert School District, Sask.

Assessed Value for Taxation.....	\$26,189,131
General Debenture Debt.....	184,000
Value School District's Assets.....	347,460

Tax Rate, 2.18 mills.

Area, 7,000 acres.

Population, 15,000.

---

---

### City of North Battleford, Sask.

Assessed Value for Taxation (estimated) .....	\$8,000,000
General Debenture Debt.....	795,329
Less,—Sinking Fund.....	\$ 5,684
Waterworks Debentures.....	189,000
Electric Light Debentures.....	154,000
	<hr/>
Net Debenture Debt.....	446,645
Local Improvement Debt.....	258,377

Tax Rate, 12 mills.

Population, 5,868.

---

### North Battleford School District, Sask.

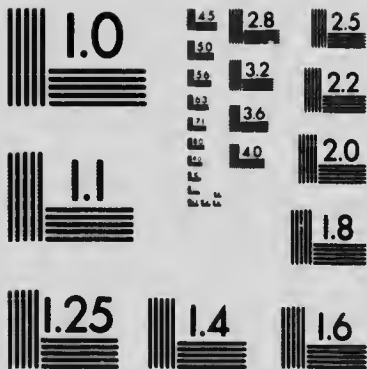
Assessed Value for Taxation (estimated) .....	\$10,671,239
General Debenture Debt.....	203,006
Value School District's Assets.....	222,013

Tax Rate, 2.8 mills.

Area, 14,080 acres.

Population, 5,680.





**MICROCOPY RESOLUTION TEST CHART**  
**NATIONAL BUREAU OF STANDARDS**  
**STANDARD REFERENCE MATERIAL 1010a**  
**(ANSI and ISO TEST CHART No. 2)**

---

---

### Town of Swift Current, Sask.

Assessed Value for Taxation.....	\$11,395,329
Exemptions not included above.....	160,100
General Debenture Debt.....	807,347
Less,—Sinking Fund.....	\$ 13,709
Waterworks Debentures.....	327,265
Electric Light Debentures.....	179,000
	<hr/>
Net Debenture Debt.....	287,373
Local Improvement Debt.....	53,557
Value Municipality's Assets.....	740,260

Tax Rate, 16.50 mills.

Population, 5,765.

---

### Swift Current School District, Sask.

Assessed Value for Taxation.....	\$11,993,489
General Debenture Debt.....	133,950
Value School District's Assets.....	135,000

Tax Rate, 2.50 mills.

Area, 12,960 acres.

Population, 5,700.

---

---

**City of Weyburn, Sask.**

Assessed Value for Taxation.....	\$9,997,765
Exemptions not included above.....	647,540
General Debenture Debt.....	462,000
Less,—Sinking Fund.....	\$ 6,876
Waterworks Debentures.....	208,000
Electric Light Debentures.....	103,000
	317,876
Net Debenture Debt.....	144,124
Local Improvement Debt.....	86,019
Value Municipality's Assets.....	668,093

Tax Rate, 20 mills.

Population, 5,343.

---

**Weyburn School District, Sask.**

Assessed Value for Taxation.....	\$11,122,765
Total Debenture Debt.....	55,000
Value of School District's Assets.....	244,600

Area, 16,000 acres.

Population, 6,500.



---

---

**Town of Yorkton, Sask.**

Assessed Value for Taxation.....	\$8,019,060
Exemptions not included above.....	632,475
General Debenture Debt.....	690,300
Less,—Waterworks Debentures.....	\$129,050
Electric Light Debentures.....	273,300
	<hr/>
Net Debenture Debt.....	287,950
Local Improvement Debt.....	136,000
Value Municipality's Assets.....	679,981

Tax Rate, 17 mills.

Population, 5,218.

---

**Yorkton School District, Sask.**

Assessed Value for Taxation.....	\$8,660,444
General Debenture Debt.....	77,090
Value School District's Assets.....	124,500

Tax Rate, 5.50 mills.

Area, 14,400 acres.

Population, 5,218.

---

---

### Town of Estevan, Sask.

Assessed Value for Taxation.....	\$4,086,000
General Debenture Debt.....	412,834
Less,—Waterworks Debentures.....	\$109,997
Electric Light Debentures.....	90,228
	<hr/>
Net Debenture Debt.....	212,609
Local Improvement Debt.....	54,531
Value Municipality's Assets.....	419,684

Population, 3,800.

---

### Town of Melville, Sask.

Assessed Value for Taxation.....	\$3,303,569
General Debenture Debt.....	297,262
Less,—Sinking Fund.....	\$ 7,231
Waterworks Debentures.....	63,000
Electric Light Debentures.....	61,300
	<hr/>
Net Debenture Debt.....	165,731
Value Municipality's Assets.....	387,694

Population, 3,250.

---

---

### Town of Battleford, Sask.

Assessed Value for Taxation.....	\$4,324,978
Exemptions not included above.....	810,708
General Debenture Debt.....	390,948
Less, Waterworks, Electric Light and Sewerage Debentures.....	242,523
Net Debenture Debt.....	148,425
Local Improvement Debt.....	49,539
Value Municipality's Assets.....	771,431

Tax Rate, 14.40 mills.

Population, 2,300.

---

### Town of Indian Head, Sask.

Assessed Value for Taxation.....	\$1,476,185
General Debenture Debt.....	251,860
Less, Waterworks and Electric Light Debentures ..	238,650
Net Debenture Debt.....	13,210
Local Improvement Debt.....	11,782
Value Municipality's Assets.....	333,486

Tax Rate, 20 mills.

Population, 2,000.

---

---

### Town of Maple Creek, Sask.

Assessed Value for Taxation.....	\$1,285,290
Exemptions not included above.....	76,300
General Debenture Debt.....	134,324
Less, Waterworks Debentures.....	63,000
Net Debenture Debt.....	71,324
Value Municipality's Assets.....	179,000

Tax Rate, 22 mills.

Population, 1,600.

---

### Town of Wilkie, Sask.

Assessed Value for Taxation.....	\$1,266,159	
Exemptions not included above.....	350,000	
General Debenture Debt.....	96,259	
Less,—Waterworks Debentures.....	\$61,500	
Electric Light Debentures.....	15,800	77,300
Net Debenture Debt.....	18,959	
Local Improvement Debt.....	2,741	
Value Municipality's Assets.....	77,000	

Tax Rate, 17 mills.

Population, 1,556.

---

---

**Town of Humboldt, Sask.**

Assessed Value for Taxation.....	\$1,430,651
General Debenture Debt.....	158,008
Less, Electric Light Debentures.....	51,500
Net Debenture Debt.....	106,508
Value Municipality's Assets.....	219,888

Population, 2,200.

---

**Town of Melfort, Sask.**

Assessed Value for Taxation.....	\$1,859,092
Exemptions not included above.....	242,000
General Debenture Debt.....	199,447
Less,—Sinking Fund.....	\$ 1,095
Waterworks Debentures.....	60,000
Gas and Electric Light Debentures.....	35,000
Net Debenture Debt.....	103,352
Local Improvement Debt.....	1,700
Value Municipality's Assets.....	101,159

Tax Rate, 19 mills.

Population, 1,522.

---

---

**Town of Sutherland, Sask.**

Assessed Value for Taxation.....	\$2,165,089
Exemptions not included above.....	135,350
General Debenture Debt.....	42,236
Less, Waterworks Debentures.....	38,836
Net Debenture Debt.....	3,400
Local Improvement Debt.....	56,163
Value Municipality's Assets.....	68,562

Population, 1,500.

---

**Town of Rosthern, Sask.**

Assessed Value for Taxation.....	\$1,157,700
Exemptions not included above.....	110,000
General Debenture Debt.....	25,000
Local Improvement Debt.....	10,000
Value Municipality's Assets.....	45,000

Population, 1,500.

---

---

**Town of Canora, Sask.**

Assessed Value for Taxation.....		\$2,023,950
Exemptions not included above.....		57,650
General Debenture Debt.....		59,100
Less,—Waterworks Debentures.....	\$ 5,000	
Electric Light Debentures.....	30,000	35,000
Net Debenture Debt.....		24,100
Local Improvement Debt.....		19,100
Value Municipality's Assets.....		106,242

Tax Rate, 18 mills.

Population, 1,400.

---

**Town of Kamsack, Sask.**

Assessed Value for Taxation.....		\$1,335,740
Exemptions not included above.....		50,710
General Debenture Debt.....		159,867
Less,—Waterworks Debentures.....	\$63,000	
Electric Light Debentures.....	25,000	88,000
Net Debenture Debt.....		71,867
Value Municipality's Assets.....		13,000

Tax Rate, 18 mills.

Population, 1,300.

---

---

---

---

**Town of Watrous, Sask.**

Assessed Value for Taxation.....	\$1,712,860
General Debenture Debt....	185,411
Less, Waterworks Debentures.....	100,000
	<hr/>
Net Debenture Debt.....	85,411
Local Improvement Debt.....	8,800
Value Municipality's Assets.....	82,714

Tax Rate, 13 mills.

Population, 1,300.

---

**Town of Assiniboia, Sask.**

Assessed Value for Taxation.....	\$985,975
Exemptions not included above.....	17,000
General Debenture Debt.....	Nil
Value Municipality's Assets.....	34,205

Tax Rate, 23 mills.

Population, 1,300.



---

---

**Town of Moosomin, Sask.**

Assessed Value for Taxation.....	\$972,729
General Debenture Debt.....	83,243
Less, Waterworks Debentures.....	25,000
Net Debenture Debt.....	58,243
Value Municipality's Assets.....	116,157

Tax Rate, 21 mills.

Population, 1,250.

---

**Town of Kindersley, Sask.**

Assessed Value for Taxation.....	\$1,212,816
Exemptions not included above.....	64,400
General Debenture Debt.....	174,174
Less, Waterworks and Electric Light Debentures...	125,000
Net Debenture Debt.....	49,174
Value Municipality's Assets.....	187,026

Tax Rate, 27 mills.

Population, 1,223.

---

---

---

---

**Town of Outlook, Sask.**

Assessed Value for Taxation.....		\$1,446,439
Exemptions not included above.....		10,000
General Debenture Debt.....		73,954
Less,—Waterworks Debentures.....	\$28,500	
Electric Light Debentures.....	25,500	54,060
Net Debenture Debt.....		19,954
Value Municipality's Assets.....		90,000

Population, 1,200.

---

**Town of Broadview, Sask.**

Assessed Value for Taxation.....	\$604,094
General Debenture Debt.....	13,332
Value Municipality's Assets.....	47,270

Tax Rate, 31 mills.

Population, 1,200.

---

---

**Town of Wolseley, Sask.**

Assessed Value for Taxation.....	\$726,170
General Debenture Debt.....	44,669
Value Municipality's Assets.....	79,666

Tax Rate, 18.50 mills.

Population, 1,100.

---

**Town of Kerrobert, Sask.**

Assessed Value for Taxation.....	\$1,915,673
General Debenture Debt.....	93,200
Less, Waterworks Debentures.....	65,000
Net Debenture Debt.....	28,200
Value Municipality's Assets.....	56,822

Tax Rate, 12 mills.

Population, 1,200.

---

---

## Province of Alberta

Area . . . . .	253,540 square miles
Area under cultivation	7,606 square miles
Population, 1911 . . . . .	374,663
1901 . . . . .	73,022
Funded Debt . . . . .	\$22,633,532
Annual Dominion Government	
Subsidy . . . . .	\$1,483,717
Estimated Revenue for 1913 .	\$5,195,500
Estimated Expenditure for 1913	\$5,075,200

✓

---

---

### City of Calgary, Alta.

Assessed Value for Taxation.....	\$133,023,618
Exemptions not included above.....	30,000,000
General Debenture Debt.....	13,165,310
Less,—Sinking Fund.....	\$ 898,053
Waterworks Debentures.....	3,335,200
Electric Light Debentures.....	1,907,000
Street Railway Debentures.....	2,280,510
	<hr/>
Net Debenture Debt.....	4,744,547
Local Improvement Debt.....	5,388,177
Value Municipality's Assets.....	15,165,619

Tax Rate, 18.75 mills.

Population, 85,000.

---

### Calgary School District, Alta.

Assessed Value for Taxation (estimated).....	\$118,000,000
General Debenture Debt.....	2,676,025
Value School District's Assets.....	3,699,643

Tax Rate, 4.18 mills.

Area, 25,920 acres.

Population, 75,000.

---

---

### City of Edmonton, Alta.

Assessed Value for Taxation.....	\$187,946,720
Exemptions not included above.....	14,273,860
General Debenture Debt.....	19,705,418
Less,—Sinking Fund.....	\$ 85,000
Waterworks Debentures.....	2,038,823
Electric Light Debentures.....	769,874
Power Debentures.....	1,931,338
Telephone Debentures.....	1,850,767
Street Railway Debentures.....	3,074,837
	<hr/>
Net Debenture Debt.....	9,174,779
Local Improvement Debt.....	4,719,858
Value Municipality's Assets.....	15,000,000

Tax Rate, 16 mills.

Population, 70,000.

---

### Edmonton School District, Alta.

Assessed Value for Taxation (approximately).....	\$175,000,000
General Debenture Debt.....	2,977,295
Value School District's Assets.....	2,011,202

Tax Rate, 3.20 mills.

Area, 19,500 acres.

Population, 70,000.

---

---

### City of Medicine Hat, Alta.

Assessed Value for Taxation.....	\$20,353,925
General Debenture Debt.....	2,339,647
Less,—Sinking Fund.....	\$ 65,788
Waterworks Debentures.....	693,821
Electric Light Debentures.....	300,000
Gas Debentures.....	478,381
	<hr/>
Net Debenture Debt.....	801,657
Local Improvement Debt.....	813,066
Value Municipality's Assets.....	2,847,540

Tax Rate, 15 mills.

Population, 16,000.

---

### Medicine Hat School District, Alta.

Assessed Value for Taxation.....	\$20,550,850
General Debenture Debt.....	516,412
Value School District's Assets.....	555,772

Tax Rate, 8 mills.

Population, 14,000.



---

---

### City of Lethbridge, Alta.

Assessed Value for Taxation.....	\$25,128,857
Exemptions not included above.....	8,204,837
General Debenture Debt.....	2,996,348
Less,—Sinking Fund.....	\$110,244
Waterworks Debentures.....	471,769
Electric Light Debentures.....	554,191
Street Railway Debentures.....	361,000
	<hr/>
Net Debenture Debt.....	1,499,144
Local Improvement Debt.....	415,372
Value Municipality's Assets.....	2,654,874

Tax Rate, 27 mills.

Population, 13,000.

---

### Lethbridge School District, Alta.

Assessed Value for Taxation.....	\$19,216,044
General Debenture Debt.....	389,905
Value School District's Assets.....	283,300

Tax Rate, 5.70 mills.

Area, 4,031 acres.

Population 13,000

---

---

**City of Red Deer, Alta.**

Assessed Value for Taxation.....	\$4,383,386
Exemptions not included above.....	625,700
General Debenture Debt.....	280,890
Less, Waterworks Debentures.....	99,017
	<hr/>
Net Debenture Debt.....	181,873
Local Improvement Debt.....	87,537
Value Municipality's Assets.....	501,663

Tax Rate, 15 mills.

Population, 3,500.

---

**City of Wetaskiwin, Alta.**

Assessed Value for Taxation.....	\$2,863,769
Exemptions not included above.....	330,950
General Debenture Debt.....	353,987
Less,—Waterworks Debentures.....	\$212,514
Gas and Electric Light Debentures	126,395
	<hr/>
Net Debenture Debt.....	15,078
Local Improvement Debt.....	86,356
Value Municipality's Assets.....	484,014

Tax Rate, 25.75 mills.

Population, 3,000.

---

---

---

---

**Town of Taber, Alta.**

Assessed Value for Taxation.....	\$1,258,485
General Debenture Debt.....	146,500
Less,—Waterworks Debentures.....	\$63,000
Gas and Water Debentures.....	35,000
Net Debenture Debt.....	48,500
Value Municipality's Assets.....	40,000

Tax Rate, 28 mills.

Population, 3,000.

---

**Town of Macleod, Alta.**

Assessed Value for Taxation.....	\$4,768,840
Exemptions not included above.....	2,307,400
General Debenture Debt.....	571,650
Less,—Sinking Fund.....	\$ 10,129
Waterworks Debentures.....	213,923
Electric Light Debentures.....	60,446
Net Debenture Debt.....	287,152
Value Municipality's Assets.....	2,129,819

Tax Rate, 13 mills.

Population, 2,800.

---

---

---

---

**Town of Redcliffe, Alta.**

Assessed Value for Taxation.....	\$3,077,500	
General Debenture Debt.....	253,600	
Less,—Sinking Fund.....	\$ 5,000	
Waterworks Debentures.....	170,000	175,000
Net Debenture Debt.....		78,600
Value Municipality's Assets.....		119,102

Tax Rate, 20 mills.

Population, 2,700.

---

**Town of Coleman, Alta.**

Assessed Value for Taxation.....	\$625,387	
General Debenture Debt.....	3,100	
Value Municipality's Assets.....		23,270

Tax Rate, 50 mills.

Population, 2,756.

---

---

### Town of Camrose, Alta.

Assessed Value for Taxation.....	\$2,200,000	
General Debenture Debt.....		167,800
Less,—Waterworks Debentures.....	\$82,000	
Electric Light Debentures.....	32,000	114,000
Net Debenture Debt.....		53,800
Local Improvement Debt.....		41,700
Value Municipality's Assets.....		293,000

Population, 2,000.

---

### Town of Stettler, Alta.

Assessed Value for Taxation.....	\$1,020,000	
General Debenture Debt.....		82,811
Less,—Waterworks Debentures.....	\$36,900	
Electric Light Debentures.....	19,993	56,898
Net Debenture Debt.....		25,913
Local Improvement Debt.....		15,922
Value Municipality's Assets.....		103,981

Tax Rate, 34 mills.

Population, 2,000

---

---

---

---

**Town of Blairmore, Alta.**

Assessed Value for Taxation .....	\$600,000
General Debenture Debt.....	60,000
Less, Waterworks Debentures .....	55,000
	<hr/>
Net Debenture Debt.....	5,000
Value Municipality's Assets.....	54,000

Tax Rate, 25 mills.

Population, 2,000

---

**Town of Bassano, Alta.**

Assessed Value for Taxation.....	\$1,675,360
Exemptions not included above.....	92,210
General Debenture Debt.....	242,600
Less,—Waterworks Debentures .....	\$200,000
Gas Debentures.....	25,000
	<hr/>
Net Debenture Debt.....	17,600
Value Municipality's Assets.....	224,702

Tax Rate, 19 mills.

Population, 2,000

---

---

---

---

**Town of Edson, Alta.**

Assessed Value for Taxation. ....	\$2,857,287
General Debenture Debt. ....	145,000
Less, Waterworks Debentures .....	90,000
	<hr/>
Net Debenture Debt. ....	55,000
Value Municipality's Assets .....	68,000

Tax Rate, 23 mills.

Population, 1,700.

---

**Town of Vegreville, Alta.**

Assessed Value for Taxation. ....	\$1,565,107
General Debenture Debt. ....	156,862
Less,—Waterworks Debentures. ....	\$78,488
Electric Light and Gas Debentures. .	50,000
	<hr/>
Net Debenture Debt. ....	28,374
Local Improvement Debt. ....	29,417
Value Municipality's Assets. ....	135,072

Tax Rate, 20.30 mills.

Population, 1,600.

---

---

---

---

**Town of Athabasca Landing, Alta.**

Assessed Value for Taxation.....	\$1,191,257
General Debenture Debt.....	80,000
Less, Waterworks Debentures.....	80,000

Tax Rate, 22 mills.

Population, 1,600

---

**Town of Raymond, Alta.**

Assessed Value for Taxation.....	\$205,000
Exemptions not included above .....	10,000
General Debenture Debt.....	58,366
Less, Waterworks Debentures.....	53,525
Net Debenture Debt .....	4,841
Value Municipality's Assets .....	91,786

Tax Rate, 34 mills.

Population, 1,500.

---

---



---

---

### Town of High River, Alta.

Assessed Value for Taxation.....	\$607,695
Exemptions not included above.....	16,435
General Debenture Debt.....	142,473
Less,—Waterworks Debentures.....	\$100,000
Electric Light Debentures.....	26,083
Net Debenture Debt.....	16,390
Local Improvement Debt.....	6,506
Value Municipality's Assets.....	94,000

Tax Rate, 51 mills.

Population, 1,500.

---

### Town of Lacombe, Alta.

Assessed Value for Taxation.....	\$605,000
General Debenture Debt.....	53,547
Value Municipality's Assets.....	102,753

Population, 1,500.

---

---

**Town of Pincher Creek, Alta.**

Assessed Value for Taxation.....	\$552,000
Exemptions not included above.....	60,000
General Debenture Debt.....	112,900
Less, Waterworks Debentures.....	20,900
	<hr/>
Net Debenture Debt.....	92,000
Value Municipality's Assets.....	40,000

Tax Rate, 20 mills.

Population, 1,400.

---

**Town of Magrath, Alta.**

Assessed Value for Taxation.....	\$132,647
Exemptions not included above.....	50,000
General Debenture Debt.....	17,000
Local Improvement Debt.....	17,653
Value Municipality's Assets.....	10,000

Tax Rate, 37 mills.

Population, 1,400.

---

---

**Town of Vermilion, Alta.**

Assessed Value for Taxation.....	\$1,410,170
Exemptions not included above.....	12,800
General Debenture Debt.....	49,216
Less, Electric Light Debentures.....	15,132
Net Debenture Debt.....	34,084
Value Municipality's Assets.....	16,720

Tax Rate, 28.80 mills.

Population, 1,217

---

**Town of Wainwright, Alta.**

Assessed Value for Taxation.....	\$692,000
Exemptions not included above.....	30,000
General Debenture Debt.....	66,135
Value Municipality's Assets.....	53,460

Tax Rate, 28 mills.

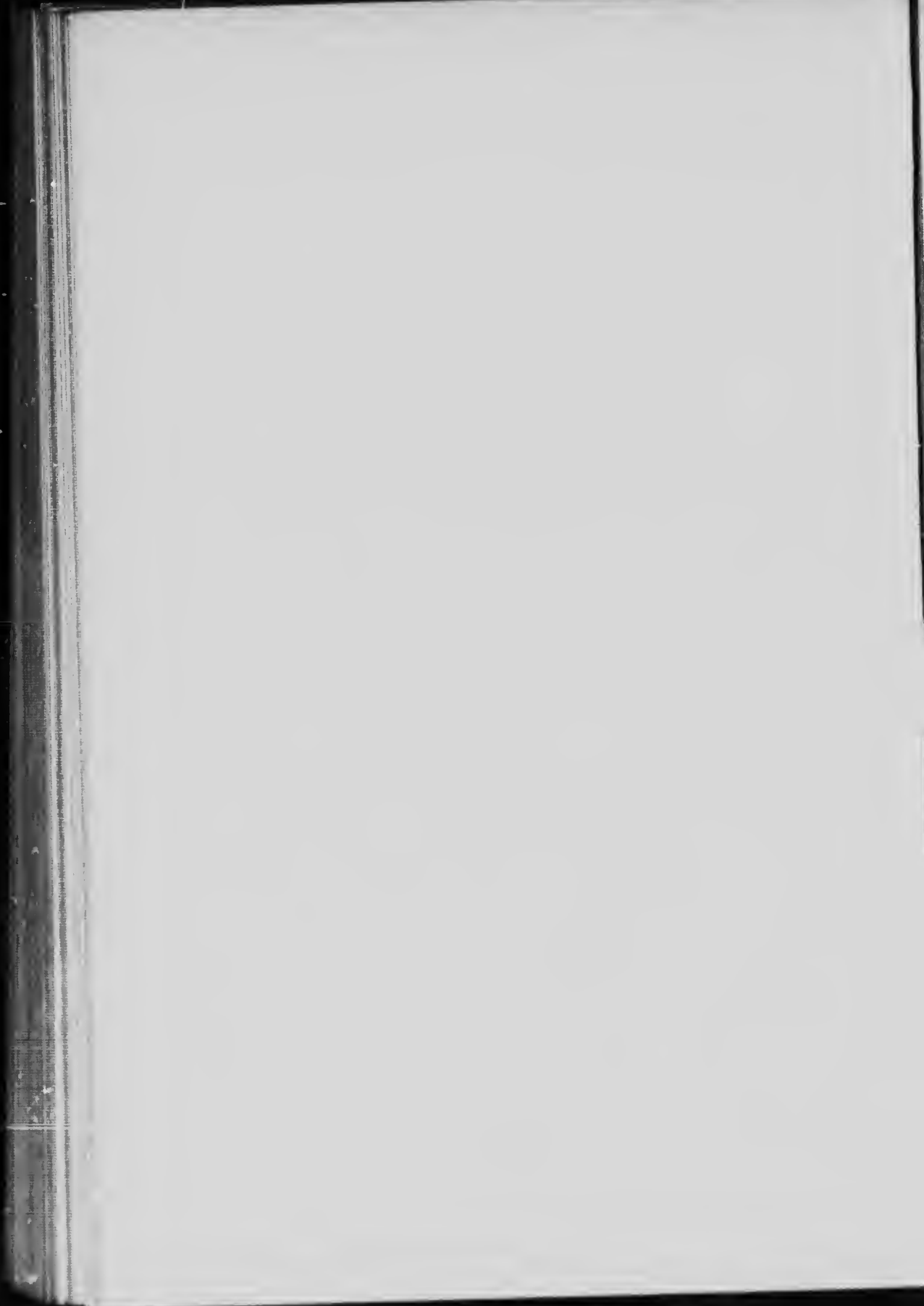
Population, 1,200.

---

---

## Province of British Columbia

Area . . . . .	357,600 square miles
Population, 1911 . . . . .	392,480
1901 . . . . .	178,657
Funded Debt . . . . .	\$10,778,146
Sinking Fund . . . . .	\$2,193,793
Annual Dominion Government	
Subsidy . . . . .	\$723,135
Revenue for last fiscal year .	\$10,745,709
Expenditure for last fiscal year	\$11,381,198



---

---

### City of Vancouver, B.C.

Assessed Value for Taxation.....	\$212,985,179	
General Debenture Debt.....	28,176,157	
Less,—Sinking Fund.....	\$1,932,684	
Waterworks Debentures.....	4,349,351	6,282,035
Net Debenture Debt.....		21,894,122
Value Municipality's Assets.....		25,000,000

Population, 122,100.

---

### City of Victoria, B.C.

Assessed Value for Taxation.....	\$112,282,630	
Exemptions not included above.....	17,419,540	
General Debenture Debt.....	10,724,955	
Less,—Sinking Fund.....	\$1,274,662	
Waterworks Debentures.....	4,419,000	
Electric Light Debentures.....	141,000	5,834,662
Net Debenture Debt.....		4,890,293
Local Improvement Debt.....		4,922,453
Value Municipal Assets.....		19,493,371

Tax Rate, 17.74 mills.

Population, 50,000.

---



---

### Municipality of South Vancouver, B.C.

Assessed Value for Taxation.....	\$41,780,328
Exemptions not included above.....	1,475,765
General Debenture Debt.....	5,250,833
Less,—Sinking Fund.....	\$ 106,333
Waterworks Debentures.....	1,013,050    1,119,383
Net Debenture Debt.....	4,131,450
Local Improvement Debt.....	194,382
Value Municipality's Assets.....	4,921,585
Tax Rate—Improved Land.....	17.75 mills
Unimproved Land.....	26.75 mills

Area, 9,200 acres.

Population, 39,600.

---

### District of Burnaby, B.C.

Assessed Value for Taxation.....	\$22,118,375
Exemptions not included above.....	1,315,435
General Debenture Debt.....	3,003,150
Less,—Sinking Fund.....	\$ 48,485
Waterworks Debentures.....	768,650    817,135
Net Debenture Debt.....	2,186,015
Value Municipality's Assets.....	2,145,338

Area, 21,500 acres.

Population, 18,000.

---

---

### City of New Westminster, B.C.

Assessed Value for Taxation.....	\$20,559,937
Exemptions not included above.....	1,932,525
General Debenture Debt.....	4,625,500
Less,—Sinking Fund.....	\$ 76,174
Waterworks Debentures.....	916,500
Electric Light Debentures.....	206,000
Gas Debentures.....	225,000
	<hr/>
Net Debenture Debt.....	3,201,826
Local Improvement Debt.....	1,181,588
Value Municipality's Assets.....	4,039,957

Population, 17,000.

---

### Municipality of Point Grey, B.C.

Assessed Value for Taxation.....	\$37,282,654
General Debenture Debt.....	5,748,843
Less,—Sinking Fund.....	\$ 81,936
Waterworks Debentures.....	1,454,018
	<hr/>
Net Debenture Debt.....	4,212,889
Value Municipality's Assets.....	5,215,251

Area, 12,000 acres.

Population, 15,000.



---

---

### City of North Vancouver, B.C.

Assessed Value for Taxation.....	\$16,012,450	
Exemptions not included above.....	3,407,950	
General Debenture Debt.....	1,785,829	
Less,—Sinking Fund.....	\$100,342	
Waterworks Debentures.....	494,000	594,342
Net Debenture Debt.....		1,191,487
Local Improvement Debt.....		856,289
Value Municipality's Assets.....		3,153,713

Tax Rate, 11.16 mills.

Population, 8,000.

---

### City of Nanaimo, B.C.

Assessed Value for Taxation.....	\$4,907,555	
Exemptions not included above.....	268,985	
General Debenture Debt.....	649,500	
Less,—Sinking Fund.....	\$ 93,997	
Waterworks Debentures.....	309,000	402,997
Net Debenture Debt.....		246,503
Local Improvement Debt.....		610,959
Value Municipality's Assets.....		143,000

Tax Rate, 33 mills.

Population, 8,000.

---

---

---

---

### Municipality of Saanich, B.C.

Assessed Value for Taxation.....	\$17,775,000
General Debenture Debt.....	435,690
Less, Sinking Fund.....	3,269
Net Debenture Debt.....	432,421
Local Improvement Debt.....	65,500

Population, 8,000.

---

### City of Nelson, B.C.

Assessed Value for Taxation.....	\$4,320,896
Exemptions not included above.....	400,000
General Debenture Debt.....	661,000
Less,—Sinking Fund.....	\$211,519
Waterworks Debentures.....	97,500
Electric Light Debentures.....	355,000
Tramway Debentures.....	10,000
Local Improvement Debt.....	38,759
Value Municipality's Assets.....	1,025,646

Tax Rate, 37 mills.

Population, 7,500.

---

---

### Municipality of Richmond, B.C.

Assessed Value for Taxation.....	\$6,221,209
General Debenture Debt.....	325,000
Less,—Sinking Fund.....	\$ 55,000
Waterworks Debentures.....	325,000
Local Improvement Debt.....	341,000
Value Municipality's Assets.....	797,751

Tax Rate, 8 mills.

Area, 35,000 acres.

Population, 6,000.

---

### City of Prince Rupert, B.C.

Assessed Value for Taxation.....	\$22,152,280
Exemptions not included above.....	6,188,500
General Debenture Debt.....	1,244,213
Less,—Sinking Fund.....	\$ 88,000
Waterworks Debentures.....	550,000
Electric Light Debentures.....	106,000
Net Debenture Debt.....	500,213
Local Improvement Debt.....	1,193,561
Value Municipality's Assets.....	1,890,350

Population, 6,000.

---

---

### City of Fernie, B.C.

Assessed Value for Taxation.....	\$2,677,479
Exemptions not included above.....	521,050
General Debenture Debt.....	406,500
Less,—Sinking Fund.....	\$ 32,673
Waterworks Debentures.....	119,000
Electric Light Debentures.....	69,000
	<hr/>
Net Debenture Debt. ....	185,827
Local Improvement Debt.....	4,136
Value Municipality's Assets.....	465,978

Population, 5,500.

---

### City of Kamloops, B.C.

Assessed Value for Taxation.....	\$4,183,453
Exemptions not included above.....	1,085,588
General Debenture Debt.....	661,000
Less,—Sinking Fund.....	\$ 54,840
Waterworks Debentures.....	194,000
Electri. Light Debentures.....	210,500
	<hr/>
Net Debenture Debt. ....	201,660
- Local Improvement Debt.....	67,873
Value Municipality's Assets.....	684,907

Population, 5,400.

---

---

**Municipality of North Cowichan, B.C.**

Assessed Value for Taxation..... \$5,258,565  
General Debenture Debt..... 50,000

Area, 62,000 acres.

Population, 5,000.

---

**City of Esquimalt, B.C.**

Assessed Value for Taxation..... \$5,465,000  
Exemptions not included above..... 2,200,000  
General Debenture Debt..... 427,500

Tax Rate, 11.25 mills.

Population, 4,500.

---

---

---

---

### District of North Vancouver, B.C.

Assessed Value for Taxation.....	\$12,057,370	
Exemptions not included above.....	145,000	
General Debenture Debt.....	890,000	
Less,—Sinking Fund.....	\$19,753	
Waterworks Debentures.....	95,000	114,753
Net Debenture Debt.....		775,247
Local Improvement Debt.....		129,097
Value Municipality's Assets.....		997,772

Tax Rate, 14.50 mills.

Area, 48,000 acres.

Population, 4,000.

---

### City of Vernon, B.C.

Assessed Value for Taxation.....	\$4,101,791	
Exemptions not included above.....	385,825	
General Debenture Debt.....	620,500	
Less,—Sinking Fund.....	\$ 70,458	
Waterworks Debentures.....	233,500	
Electric Light Debentures.....	178,000	481,958
Net Debenture Debt.....		138,542
Local Improvement Debt.....		176,060
Value Municipality's Assets.....		988,990

Tax Rate, 26 mills.

Population, 4,000.

---

---

### Municipality of Delta, B.C.

Assessed Value for Taxation.....	\$6,529,200	
General Debenture Debt.....		313,404
Less,—Waterworks Debentures.....	\$180,000	
Electric Light Debentures.....	118,112	298,112
Net Debenture Debt.....		15,292
Value Municipality's Assets.....		311,000

Area, 42,000 acres.

Population, 4,000.

---

### District of Oak Bay, B.C.

Assessed Value for Taxation.....	\$8,179,150	
General Debenture Debt.....		540,250
Less,—Sinking Fund.....	\$ 60,240	
Waterworks Debentures.....	165,000	225,240
Net Debenture Debt.....		315,010
Local Improvement Debt.....		333,056
Value Municipality's Assets.....		118,590

Population, 3,000.

---

---

---

---

### City of Cranbrook, B.C.

Assessed Value for Taxation.....	\$1,994,480	
Exemptions not included above.....	100,000	
General Debenture Debt.....	253,608	
Less,—Sinking Fund.....	\$ 3,281	
Waterworks Debentures.....	60,875	64,156
Net Debenture Debt.....		189,452
Local Improvement Debt.....		7,500
Value Municipality's Assets.....		313,165

Tax Rate, 33 mills.

Population, 3,500.

---

### City of Ladysmith, B.C.

Assessed Value for Taxation....	\$792,000	
Exemptions not included above.....	87,000	
General Debenture Debt.....	85,000	
Less,—Sinking Fund.....	\$10,150	
Electric Light Debentures.....	25,000	35,150
Net Debenture Debt.....		49,850
Local Improvement Debt.....		11,477

Population, 3,500.

---

---



---

---

### City of Revelstoke, B.C.

Assessed Value for Taxation.....	\$1,496,843	
Exemptions not included above.....	230,000	
General Debenture Debt.....	591,502	
Less,—Sinking Fund.....	\$ 63,209	
Waterworks and Electric Light Debentures.....	127,000	190,209
Net Debenture Debt.....		401,293
Local Improvement Debt.....		134,702

Population, 3,500.

---

### Municipality of Spallumcheen, B.C.

Assessed Value for Taxation.....	\$2,772,309	
General Debenture Debt.....	207,570	
Less,—Waterworks Debentures.....	\$83,970	
Electric Light Debentures.....	88,000	171,970
Net Debenture Debt.....		35,600
Local Improvement Debt.....		24,833
Value Municipality's Assets.....		290,659

Area, 72,220 acres.

Population, 3,500.

---

---

---

---

**City of Rossland, B.C.**

Assessed Value for Taxation.....		\$665,000
General Debenture Debt.....		178,000
Less,—Sinking Fund.....	\$47,953	
Waterworks Debentures.....	61,500	109,453
Net Debenture Debt.....		68,547
Value Municipality's Assets.....		178,000

Pop:           3,500.

---

**Municipality of Summerland, B.C.**

Assessed Value for Taxation.....		\$2,690,550
Exemptions not included above.....		1,400,000
General Debenture Debt.....		290,000
Less,—Sinking Fund.....	\$ 10,775	
Waterworks Debentures.....	242,500	
Electric Light Debentures.....	17,500	270,775
Net Debenture Debt.....		19,225
Value Municipality's Assets.....		266,000

Population, 3,000.

---

---

### City of Kelowna, B.C.

Assessed Value for Taxation.....	\$4,566,380	
Exemptions not included above.....	1,827,800	
General Debenture Debt.....		350,000
Less,—Sinking Fund.....	\$ 29,687	
Waterworks and Electric Light Debentures.....	127,500	157,187
Net Debenture Debt.....		192,813
Local Improvement Debt.....		42,000
Value Municipality's Assets.....		400,000

Tax Rate, 12.40 mills.

Population, 2,500.

---

### Municipality of Penticton, B.C.

Assessed Value for Taxation.....	\$2,302,085	
Exemptions not included above.....	1,502,980	
General Debenture Debt.....		457,800
Less,—Sinking Fund.....	\$ 14,790	
Waterworks Debentures.....	167,000	
Electric Light Debentures.....	81,000	
Irrigation System Debentures.....	100,000	362,790
Net Debenture Debt.....		95,010
Local Improvement Debt.....		30,400
Value Municipality's Assets.....		631,210

Tax Rate, 14.66 mills.

Area, 7,044 acres.

Population, 2,500.

---

---

**City of Trail, B.C.**

Assessed Value for Taxation.....		\$366,240
Exemptions not included above.....		64,600
General Debenture Debt.....		40,000
Less,—Sinking Fund.....	\$ 1,960	
Waterworks Debentures .....	15,000	16,960
Net Debenture Debt.....		23,040
Value Municipality's Assets.....		99,291

Population, 2,000.

---

**City of Grand Forks, B.C.**

Assessed Value for Taxation.....		\$1,237,600
General Debenture Debt.....		185,800
Less,—Sinking Fund.....	\$25,600	
Waterworks and Electric Light Debentures.....	80,000	105,600
Net Debenture Debt.....		80,200
Value Municipality's Assets.....		242,500

Population, 2,000.

---

---

---

---

### City of Merritt, B.C.

Assessed Value for Taxation.....	\$1,281,703
General Debenture Debt.....	100,000
Less,—Sinking Fund.....	\$ 1,687
Waterworks Debentures.....	45,000
Electric Light Debentures.....	25,000
	<hr/>
Net Debenture Debt.....	28,313
Value Municipality's Assets.....	103,008

Population, 2,000.

---

### City of Chilliwack, B.C.

Assessed Value for Taxation.....	\$1,646,360
Exemptions not included above.....	128,825
General Debenture Debt.....	196,000
Less, Sinking Fund.....	6,574
	<hr/>
Net Debenture Debt.....	189,426
Local Improvement Debt.....	19,591
Value Municipality's Assets.....	204,657

Tax Rate, 15.50 mills.

Population, 1,800.

---

---

**City of Duncan, B.C.**

Assessed Value for Taxation.....	\$1,575,775
Exemptions not included above.....	49,800
General Debenture Debt.....	129,000
Less,—Sinking Fund.....	\$ 3,947
Waterworks Debentures.....	25,000
Electric Light Debentures.....	65,000
	93,947
Net Debenture Debt.....	35,053
Value Municipality's Assets.....	33,394

Tax Rate, 16 mills.

Population, 1,500.

---

**City of Phoenix, B.C.**

Assessed Value for Taxation.....	\$710,130
Exemptions not included above.....	4,000
General Debenture Debt.....	6,000
Less, Sinking Fund.....	3,000
	3,000
Net Debenture Debt.....	3,000
Value Municipality's Assets.....	48,000

Population, 1,500.

---

---

---

---

### City of Armstrong, B.C.

Assessed Value for Taxation.....		\$921,830
General Debenture Debt.....		138,666
Less,—Sinking Fund.....	\$ 8,965	
Waterworks Debentures.....	41,000	49,965
Net Debenture Debt.....		88,701
Value Municipality's Assets.....		152,650

Tax Rate, 14 mills.

Population, 1,200.

---

### City of Enderby, B.C.

Assessed Value for Taxation.....		\$766,775
Exemptions not included above.....		78,250
General Debenture Debt.....		77,500
Less,—Sinking Fund.....	\$ 7,984	
Waterworks Debentures.....	29,500	37,484
Net Debenture Debt.....		40,016
Local Improvement Debt.....		18,500
Value Municipality's Assets.....		151,785

Tax Rate, 19.50 mills.

Population, 1,000.

---

---

---

---

### Municipality of Coquitlam, B.C.

Assessed Value for Taxation.....	\$8,250,000
General Debenture Debt.....	220,000
Less, Sinking Fund.....	13,467
Net Debenture Debt.....	206,533
Value Municipality's Assets.....	297,120

Area, 40,960 acres.

Population, 1,000.

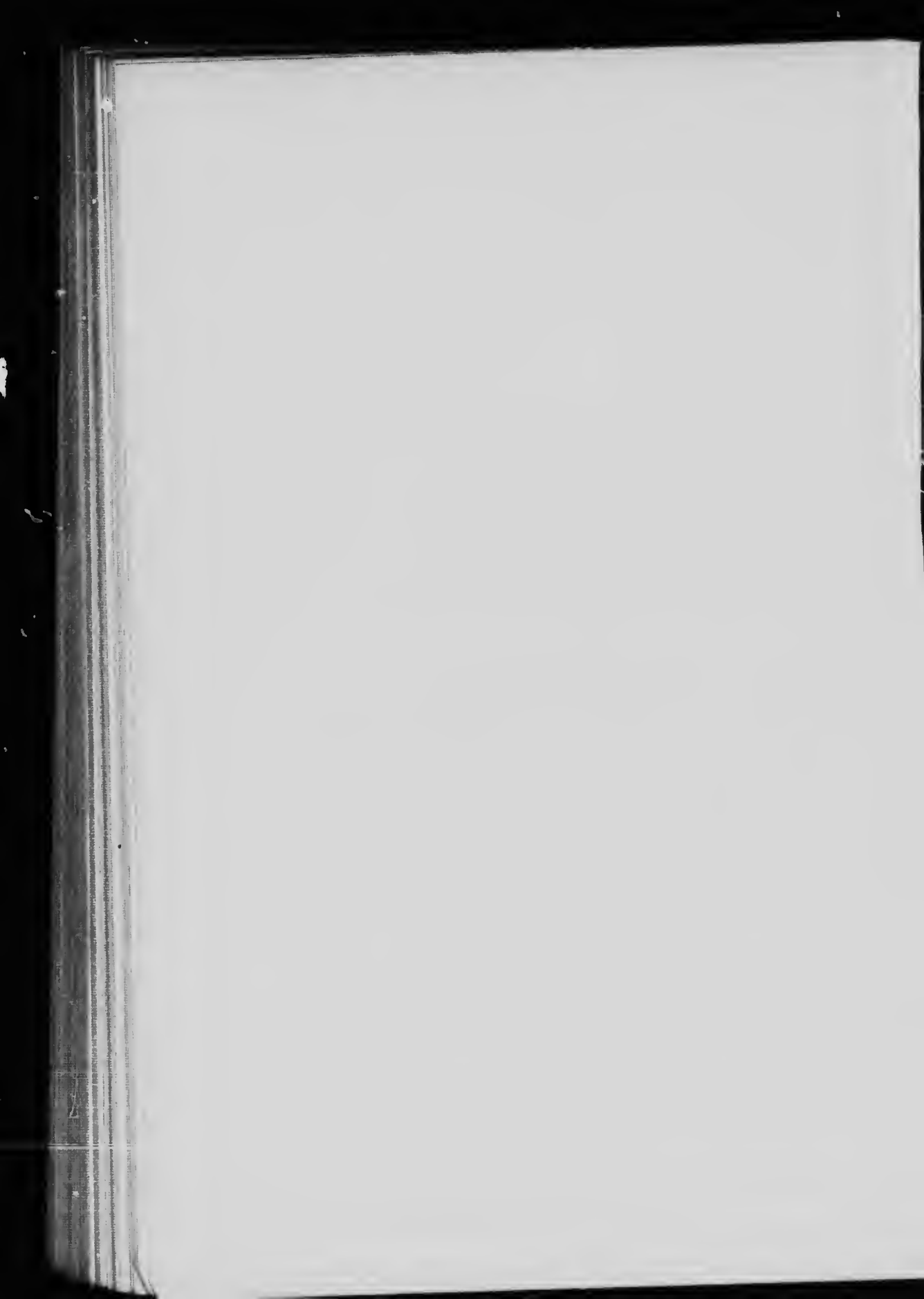
---

### City of Greenwood, B.C.

Assessed Value for Taxation.....	\$744,660
General Debenture Debt.....	91,500
Less,—Sinking Fund.....	\$13,615
Waterworks Debentures.....	43,100
Net Debenture Debt.....	56,715
Value Municipality's Assets.....	34,785
	161,467

Population, 1,000.





ROUS & MANN LIMITED  
TORONTO AND MONTREAL

