

IMAGE EV
TEST TARG



E EVALUATION
TARGET (MT-3)

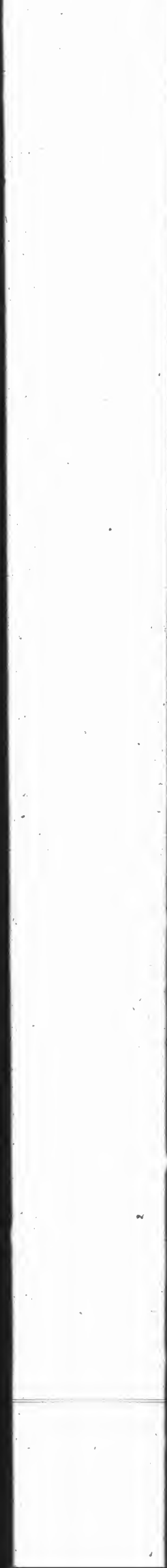


CIHM/ICM
Microfiche
Series.



CMH
che

CIHM/ICMH
Collection de
microfiches.



Technical and Bibliographic Notes/Notes techniques et bibliographiques

The Institute has attempted to obtain the best original copy available for filming. Features of this copy which may be bibliographically unique, which may alter any of the images in the reproduction, or which may significantly change the usual method of filming, are checked below

L'Institut a microfilmé le meilleur exemplaire qu'il lui a été possible d'obtenir. Les caractéristiques de cet exemplaire qui, du point de vue bibliographique, peuvent modifier une image reproduite, ou qui peuvent entraîner une modification dans la méthode habituelle de reproduction, sont indiquées ci-dessous.

- | | |
|--|---|
| <input type="checkbox"/> Coloured covers/ Couverture de couleur | <input type="checkbox"/> Coloured pages/ Pages de couleur |
| <input type="checkbox"/> Covers damaged/ Couverture endommagée | <input type="checkbox"/> Pages damaged/ Pages endommagées |
| <input type="checkbox"/> Covers restored and/or laminated/ Couverture restaurée et/ou pelliculée | <input type="checkbox"/> Pages restored and/or laminated/ Pages restaurées et/ou pelliculées |
| <input type="checkbox"/> Cover title missing/ Le titre de couverture manque | <input type="checkbox"/> Pages discoloured and/or foxed/ Pages décolorées et/ou tachées |
| <input type="checkbox"/> Coloured maps/ Cartes géographiques en couleur | <input type="checkbox"/> Pages detached/ Pages détachées |
| <input type="checkbox"/> Coloured ink (i.e. other than blue or black)/ Encre de couleur (i.e. autre que bleue ou noire) | <input type="checkbox"/> Showthrough/ Transparence |
| <input type="checkbox"/> Coloured plates and/or illustrations/ Planches et/ou illustrations en couleur | <input type="checkbox"/> Quality of print varies/ Qualité inégale de l'impression |
| <input type="checkbox"/> Bound with other material/ Relié avec d'autres documents | <input type="checkbox"/> Includes supplementary material/ Comprend des documents supplémentaires |

bibliographiques

microfilme le meilleur exemplaire possible de se procurer. Les détails faire qui sont peut-être uniques du bibliographique, qui peuvent modifier produite, ou qui peuvent exiger une dans la méthode normale de filmage ci-dessous

and pages/
e couleur

amaged/
ndommagées

restored and/or laminated
restaurées et/ou pelliculées

discoloured, stained or foxed
décolorées, tachetées ou piquées

detached/
détachées

rough
rence

of print varies/
négale de l'impression

supplementary material

The copy filmed here has been reproduced thanks to the generosity of:

Library of Congress
Photoduplication Service

The images appearing here are the best quality possible considering the condition and legibility of the original copy and in keeping with the filming contract specifications.

Original copies in printed paper covers are filmed beginning with the front cover and ending on the last page with a printed or illustrated impression, or the back cover when appropriate. All other original copies are filmed beginning on the first page with a printed or illustrated impression, and ending on the last page with a printed or illustrated impression.

Maps, plates, charts, etc., may be filmed at different reduction ratios. Those too large to be entirely included in one exposure are filmed beginning in the upper left hand corner, left to

L'exemplaire filmé fut reproduit grâce à la
générosité de:

Library of Congress
Photoduplication Service

Les images suivantes ont été reproduites avec le
plus grand soin, compte tenu de la condition et
de la netteté de l'exemplaire filmé, et en
conformité avec les conditions du contrat de
filimage.

Les exemplaires originaux dont la couverture en
papier est imprimée sont filmés en commençant
par le premier plat et en terminant soit par la
dernière page qui comporte une empreinte
d'impression ou d'illustration, soit par le second
plat, selon le cas. Tous les autres exemplaires
originaux sont filmés en commençant par la
première page qui comporte une empreinte
d'impression ou d'illustration et en terminant par
la dernière page qui comporte une telle
empreinte.

Les cartes, planches, tableaux, etc., peuvent être
filmés à des taux de réduction différents.
Lorsque le document est trop grand pour être
reproduit en un seul cliché, il est filmé à partir



8/6 m. 18
211

By Captain Joseph Taylour, ^K Commander in Chief of a

JOHN COLLINS, Esq; hereby appointed
St. John's, and all the Sea

BY Vertue of the Power given me by Her Majesty
Commander-in-Chief of the Fort and Harbour of St. John's
Willing and Requiring You forthwith to Take
Others, to be Obedient to You, as their Governour: And
to keep good Order and Discipline amongst those under
your Command, and to compel them to bring their Provision there. And, for your better
Impower'd to make as many Captains, Lieutenants, Ensigns,
as shall be necessary for the Service of
Majesty's Service.

Given under my Hand and Seal, on the
Day of October, 1709.

To the QU

The humble Petition of John Collins, Esq; Your

SHEWETH,

THAT about December 1708, the said Fort was situated
therein, at which Time Your Petitioner being
of the said Garrison, with great Hazard of his Life, the

816. m. 18

24

Commander of Her Majesty's Ship Litchfield, and
all Her Majesty's Forces in Newfoundland,

T O

12

ated Governour and Commander in Chief of the Fort and Harbour of
Sea-Coasts between Ferryland and Carbonere Island.

Majesty, I do hereby Constitute and Appoint You, until further Order, Governour and
of St. John's in Newfoundland, and all the Sea-Coasts between Ferryland and Carbonere Island,
ke upon you the said Charge and Command, Requiring all Officers, Inhabitants, and
: And You are to take care to Secure and Defend the said Fort against the Enemy, and
nder your Command, and to Order all the Inhabitants into the said Fort, and to Com-
our better Security and Guard of the said Fort and Harbour of St. John's, You are hereby
Ensigns, and Inferiour Officers, as You find necessary, and to do what is further for Her

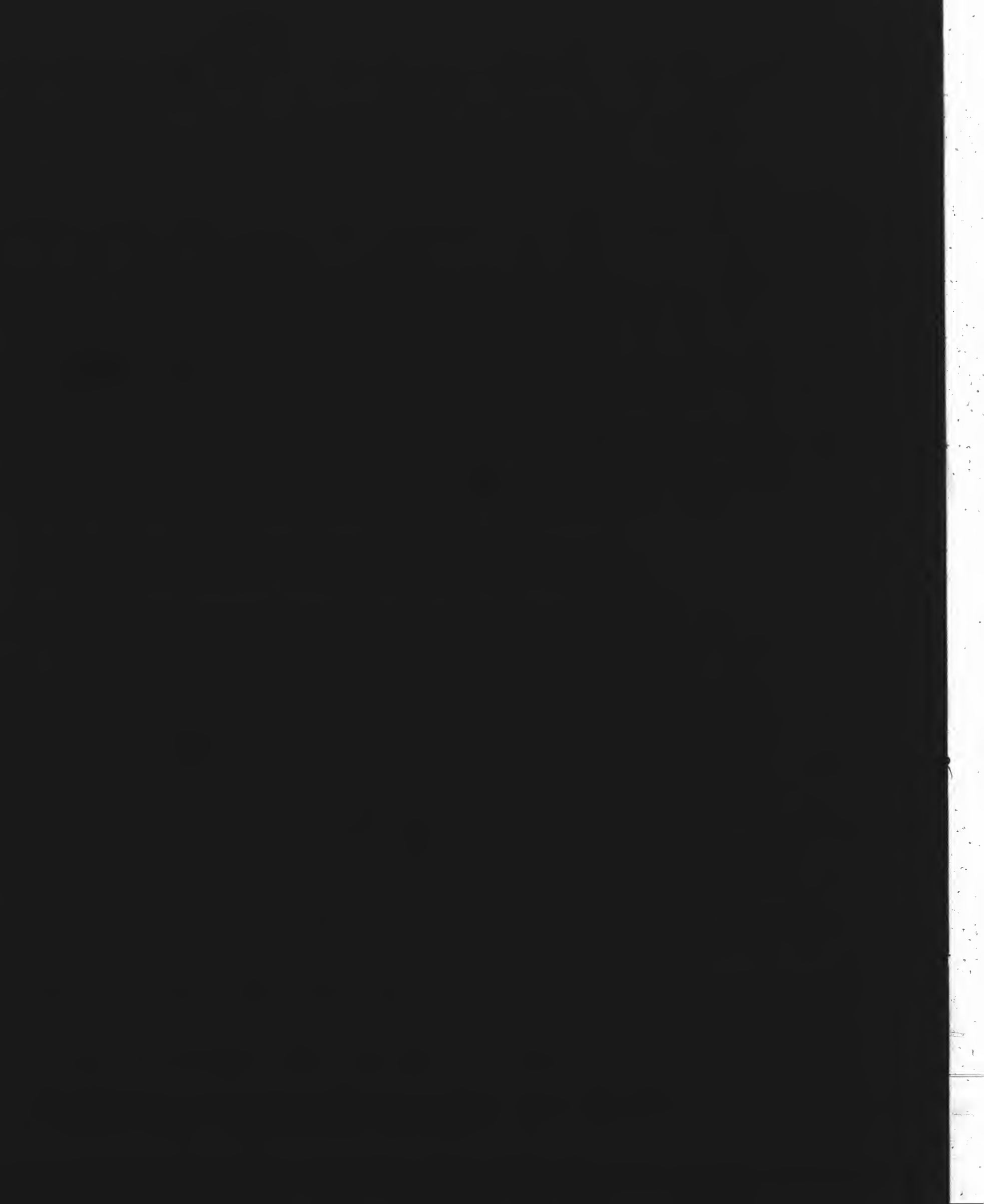
on board Her Majesty's Ship Litchfield, in the Harbour of St. John's, Newfoundland, the Sixth

JOSEPH TAYLOR.

QUEEN'S Most Excellent MAJESTY.

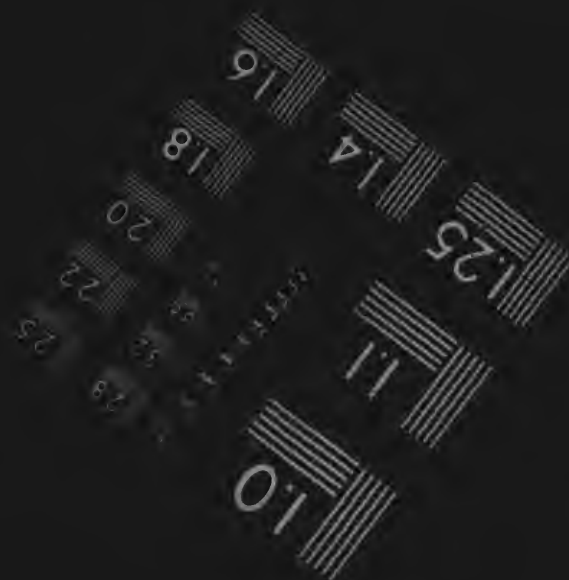
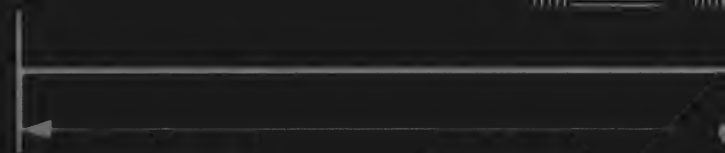
Your Majesty's present Governour of St. John's Fort in Newfoundland, &c.

as surpriz'd by the French, and the then Governour, Captain Lloyd, and Garrison, taken
g Commander of the Militia, rais'd the best Force he cou'd, and attempted the Relief
the two nearest Persons to him being the one kill'd, the other wounded: But the



1.1

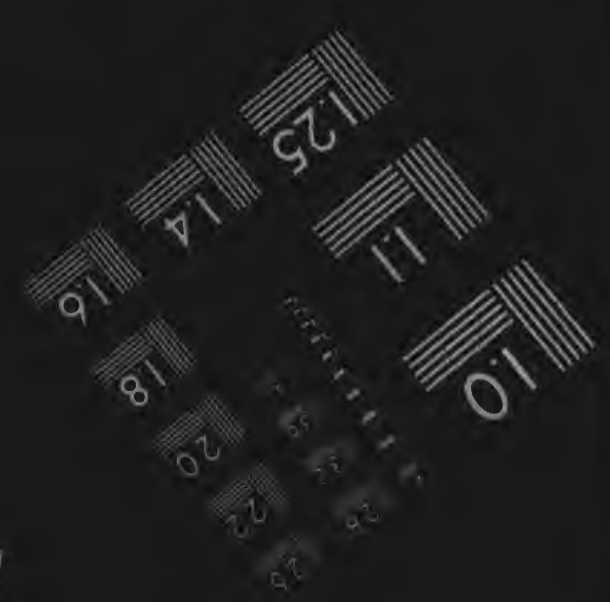
1.25



Photograph
Sciences
Corporation



Canadian Institute for Historical Microreproduction



Graphic
ces
ation

23 WEST MAIN STREET
WEBSTER N.Y. 14580
716-872-4503





Microreproductions / Institut canadien de microreproductions historiques

1986



of print varies;
négale de l'impression

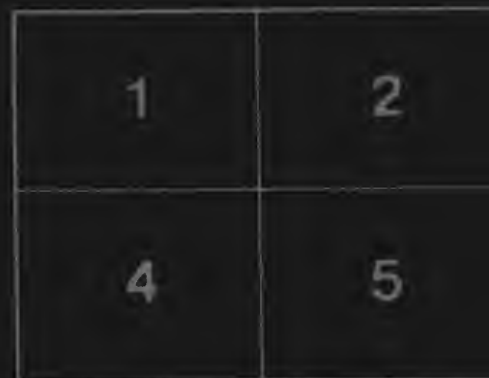
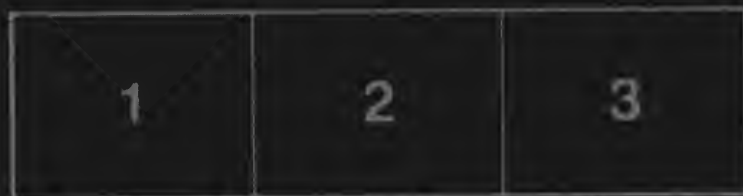
supplementary material,
nd du matériel supplémentaire

tion available;
ition disponible

holly or partially obscured by errata,
ues, etc. have been refilmed to
e best possible image.
s totalement ou partiellement
es par un feuillet d'errata, une peure
ete filmées à nouveau de façon à
a meilleure image possible



Maps, plates, charts, etc., may be filmed at different reduction ratios. Those too large to be entirely included in one exposure are filmed beginning in the upper left hand corner, left to right and top to bottom, as many frames as required. The following diagrams illustrate the method.



Les cartes, planches, tableaux, etc., peuvent être filmés à des taux de réduction différents. Lorsque le document est trop grand pour être reproduit en un seul cliché, il est filmé à partir de l'angle supérieur gauche, de gauche à droite, et de haut en bas, en prenant le nombre d'images nécessaire. Les diagrammes suivants illustrent la méthode.





THAT about December 1708, the said Fort was situated therein, at which Time Your Petitioner being Governor of the said Garrison, with great Hazard of his Life, the Town being altogether defenceless, and under the Gun

the rest of the Inhabitants, and to pay a considerable Rate to his great Prejudice, several Months before he was permitted

That in October 1709, Captain Taylor, Your Majesty's whomsoever he should find most deserving upon the Place Your Petitioner was Commission'd and Appointed Governor of the Sea-Coast between Ferryland and Carbone Island, which Traders, and all other the Inhabitants on the Place, are reposed in him by Your Majesty, at his own great Charge

Wherefore Your Petitioner humbly hopes, he having supplanted his Station, he shall fall under Your Majesty's most Gracious not be remov'd without just Reason first shewn to Your

To the QUEEN

The Humble ADDRESS of

DREAD SOVEREIGN,

WE Your Majesty's most Dutiful and Loyal Subject in unfeigned Acknowledgments for those Favours which we have in a great Measure contributed to our being protected from Attempts upon our Coasts, have rendered the Adjacent unquiet Your Majesty's Royal Wisdom thought proper to Order a Person whose extraordinary Vigilance and prudent Conduct in guarding us for its Defence, have been manifested to our Majesty's most Gracious Favour for the Care He has taken in his publick Office not to be troubled with any private Affairs; and as

Your Majesty's most Dutiful and Loyal Subject

as surpriz'd by the French; and the then Governour, Captain Lloyd, and Garrison, taken
Commander of the Militia, rais'd the best Force he cou'd, and attempted the Relief
the two nearest Persons to him being the one kill'd, the other wounded: But the
Garrison, Your Petitioner was forc'd (after all possible Resistance) to submit with
Ransom; after which, he was treacherously carry'd away to Placentia, and detain'd there
permitted to return.

His Majesty's Commodore, being there, and Impowr'd or Authoriz'd to grant a Commission to
Place (the former Governour, Captain Lloyd, being carry'd into France, and since kill'd there)
Governour and Commander in Chief of the Fort and Harbour of St. John's, and all the
which he accepted of at the Request of the said Commodore, the several Merchants and
; and Your Petitioner hath ever since held the same, and faithfully discharg'd the Trust
Charge hitherto, and to the general Satisfaction of all concern'd in the Trade there.

He hath planted no one's Pretension (coming in upon an entire Vacancy) and behav'd himself unblameably in
with most Gracious Consideration for the Governour's Pay, and for his Continuance in the Government, and
to Your Majesty.

And Your Petitioner, as in Duty bound, shall ever pray, &c.

QUEEN'S Most Excellent MAJESTY.

Sheweth that the Petitioners of the Inhabitants in NEWFOUNDLAND.

Your Majesty's Subjects inhabiting Your Province of Newfoundland, do humbly beg Leave to tender our
thanks for the Blessings which Your Majesty has so Graciously conferr'd on us; which, with God's Assistance,
we have been able to defend against the violent Outrages of our barbarous Neighbours the French; whose bold
and unfortified Harbours most Dangerous, as they would our residing at St. John's, had not
been our being Regularly into a Militia, and to be put under Command of John Collins Esq.
in Guarding and Repairing Your Majesty's Fort in St. John's, and Regulating and Con-
ducting the same with entire Satisfaction: We therefore humbly beg Leave to recommend Him to Your
Majesty's special Consideration, and the Great and Necessary Expence he has been at, and the Prejudice which his
conduct has done to Your Majesty's most Dutiful and Obedient Subjects.

Subscribed by all the best Inhabitants that are Masters of Ships

and Masters of Ships trading to Newfoundland, do concur with
the said John Collins Esq. their present Governour, with all
the said Governour, and Rewarded for the good
of that Province.

Witness our hands and Seals of Office at London, Trading this

